

Lynnwood Link Extension Project Update

Community Oversight Panel

7/13/22



Introductions

Today's Presenters

- **Randy Harlow**
Executive Project Director, Lynnwood Link Extension

- **Josh Pategas**
Deputy Executive Project Director, Lynnwood Link Extension

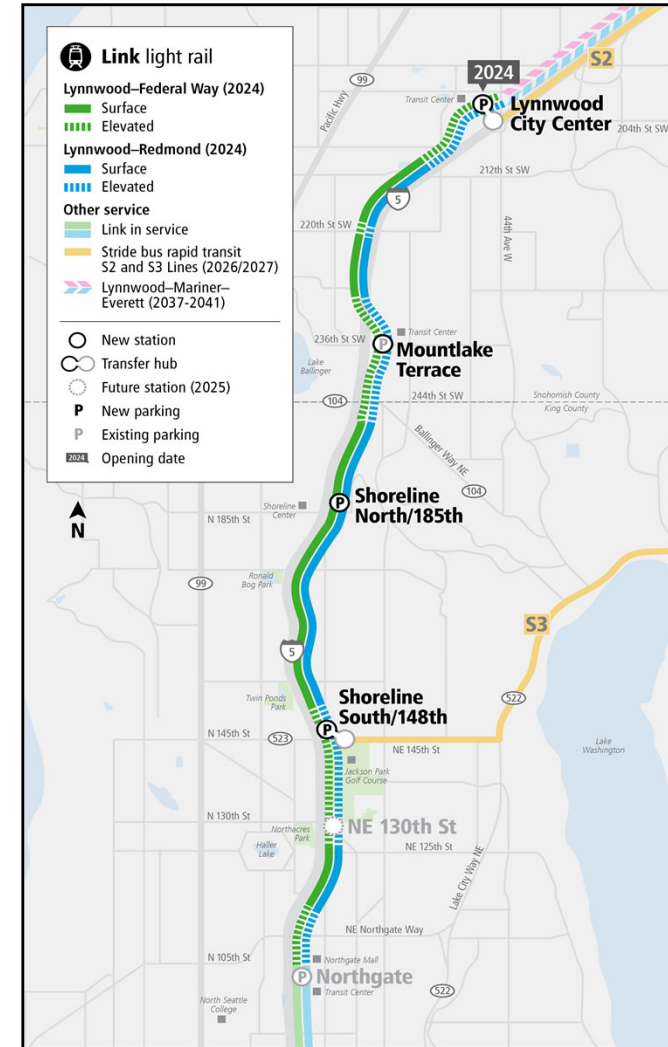
Lynnwood Link Extension Project Update

- General Project Status
- Stakeholder Engagement
- Construction Activities
- Upcoming Activities
- Q&A

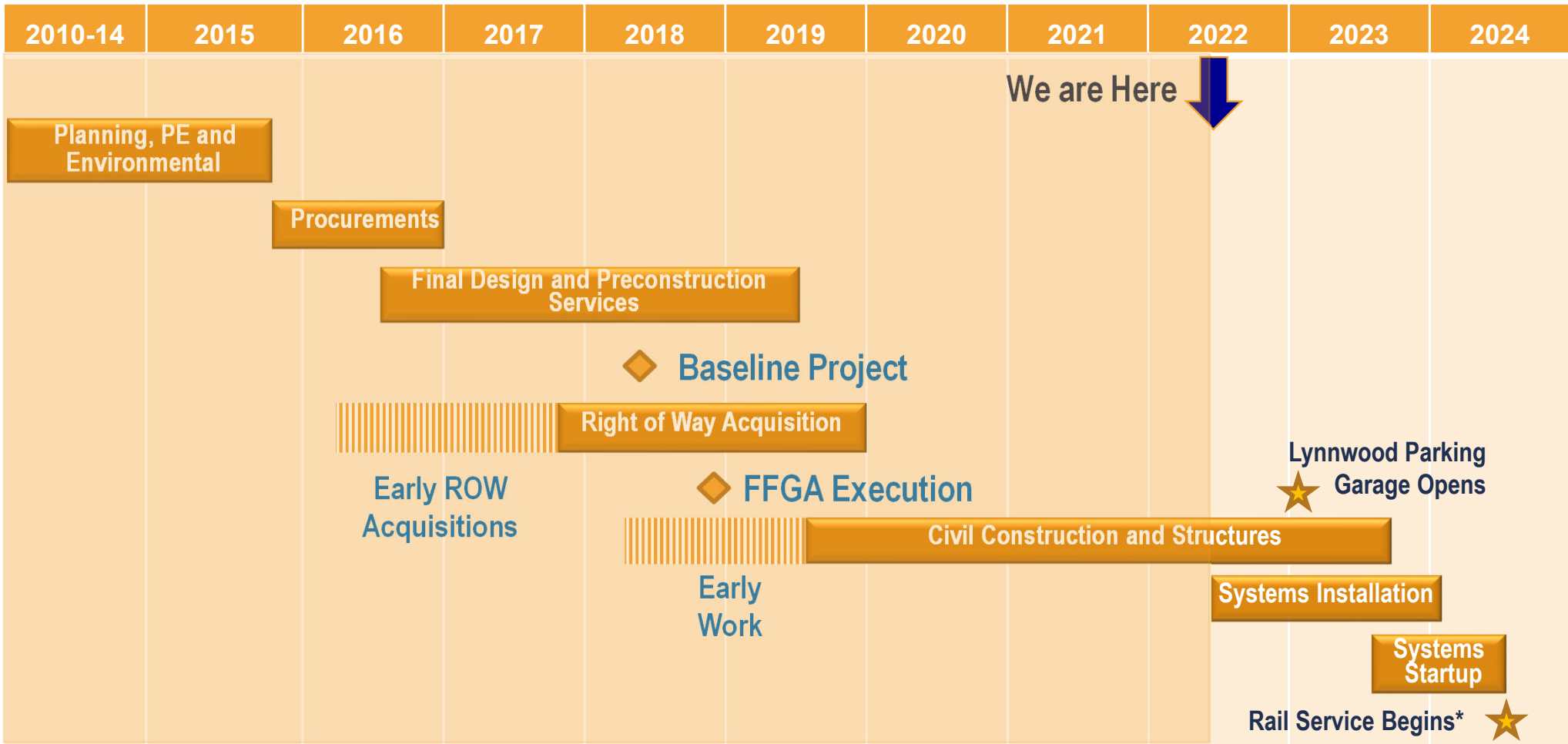


Lynnwood Link Extension

- 8.5 miles fully-exclusive extension from Northgate to Lynnwood with 4 stations*
- 1,500 added stalls of park-and-ride capacity (30% increase in the corridor)
- Lynnwood to Downtown Seattle: 28 minutes
- Four-minute headways during peak hours
- 63,000 - 74,000 daily boardings projected by 2035



Baseline Schedule



Current Status

Cost Summary by Phase

Project Phase	Baseline Budget	Authorized Project Allocation	Commitment to Date	Incurred to Date	Estimated Final Cost (EFC)	Authorized Allocation vs. EFC
Administration	\$98.2	\$98.2	\$55.5	\$55.5	\$98.2	\$0.0
Preliminary Engineering	\$39.1	\$39.1	\$39.1	\$39.1	\$39.1	\$0.0
Final Design	\$164.2	\$164.2	\$149.7	\$141.9	\$164.2	\$0.0
Construction Services	\$128.4	\$139.0	\$110.2	\$81.3	\$139.0	\$0.0
3rd Party Agreements	\$14.6	\$17.6	\$12.9	\$11.6	\$17.6	\$0.0
Construction	\$1,921.4	\$2,094.6	\$1,912.4	\$1,281.9	\$2,094.6	\$0.0
Light Rail Vehicles	\$0.0	\$0.0	\$0.0	\$0.0	\$0.0	\$0.0
ROW	\$235.7	\$219.1	\$179.4	\$175.2	\$219.1	\$0.0
Project Contingency	\$170.2	\$0.0	\$0.0	\$0.0	\$0.0	\$0.0
Total	\$2,771.6	\$2,771.6	\$2,459.1	\$1,786.5	\$2,771.6	\$0.0

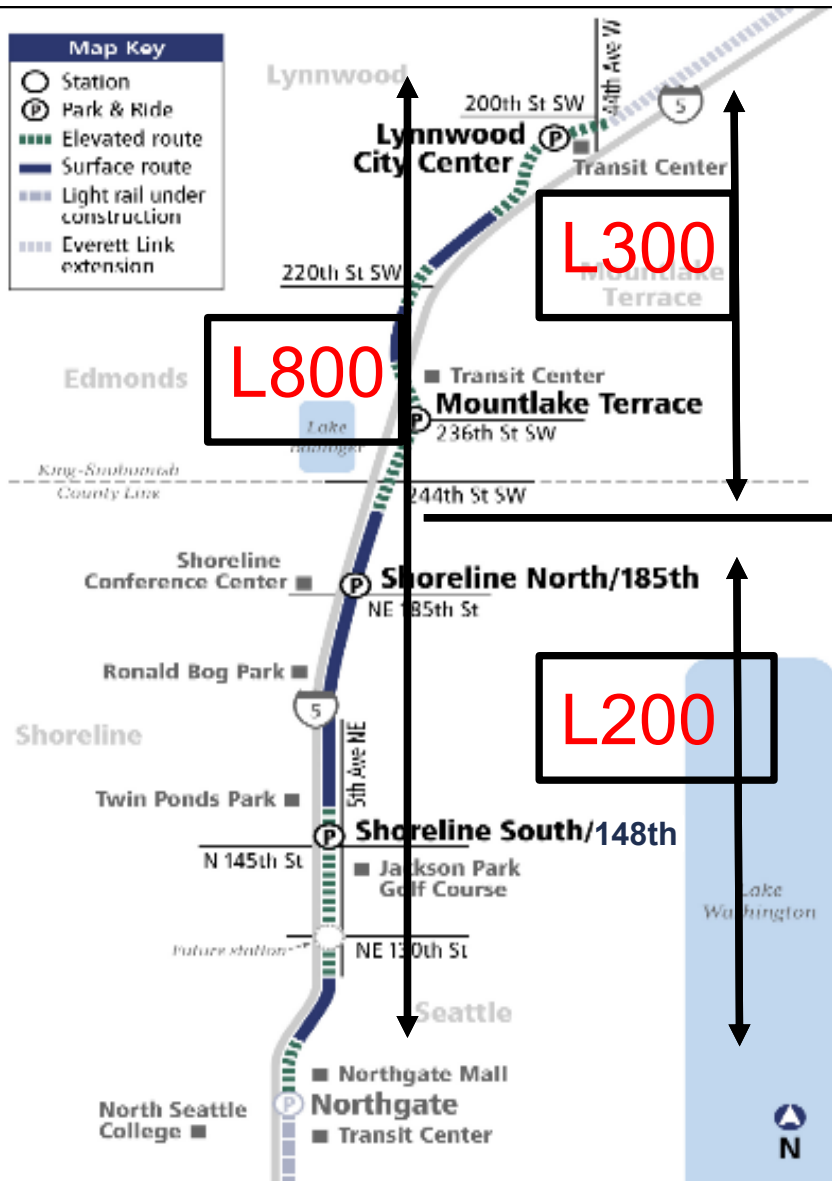
**Costs shown above are as of May 2022, in millions of year-of-expenditure dollars.*

Budget Status

- All major contracts have been awarded; construction is 66% complete.
- 65% of the project baseline budget has been spent, including design and right-of-way costs.
- The Estimated Final Cost is within the baseline budget.

Top Cost Risks

- Internal and external resource availability for startup and commissioning.
- Delayed guideway access for systems contractors.



Major Construction Contract Packages Underway

- L200 Civil – Stacy & Witbeck/Kiewit/Hoffman
Northgate Station to NE 200th Street
- L300 Civil – Skanska Constructors L300
NE 200th Street to Lynnwood Station
- L800 Systems – Mass Electric
Lynnwood Link Systems Construction
 - Traction Power
 - Communications
 - Train Control

Stakeholder Engagement

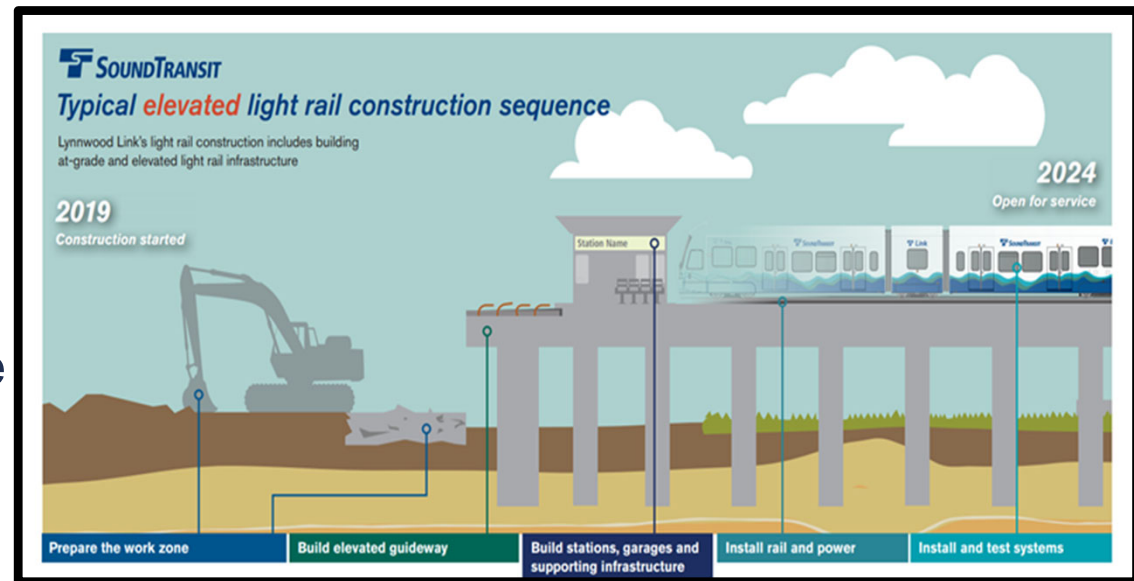
Jurisdictional Partner	Meeting Frequency
City of Seattle Executive Level	Monthly
City of Shoreline Executive Level	Bi-weekly
City of Mountlake Terrace Executive Level	Monthly
City of Lynnwood Executive Level	Monthly
WSDOT / Construction Team	Bi-Weekly
WSDOT Executive Level	Quarterly
Seattle City Light (SCL)	Weekly
Other Affected Utilities	As Needed
Fire / Life Safety and Security Committee (FLSSC)	Quarterly
Community Transit (CT)	Bi-weekly
King County Metro (KCM)	As Needed

Construction Activities

Completed Construction Activities

Milestones Since the April 2021 COP Presentation

- Construction ~66% Complete
- All girders have been set
- Guideway is established
- Major wall construction complete
- Station and garage structures
- Mass excavation complete



Completed Construction Activities



I-5 Freeway Crossing in
Mountlake Terrace

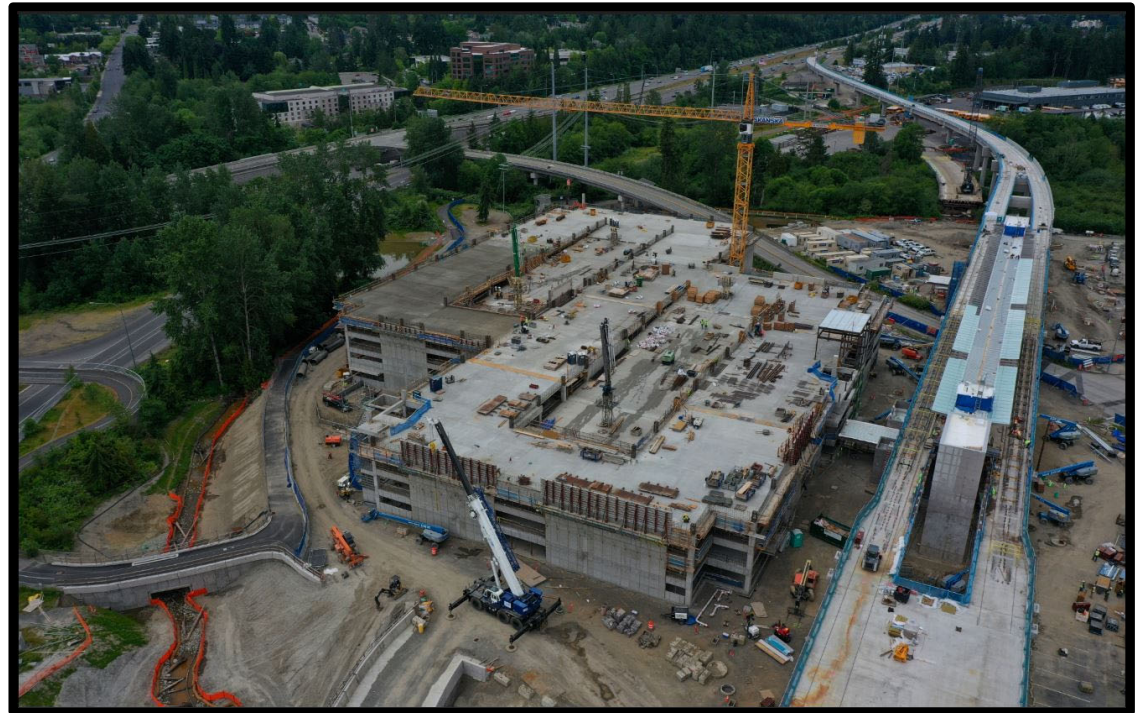


Scriber Creek Daylit
in Lynnwood Adjacent to Parking
Garage and Transit Center

Current Construction Activities

Work Underway

- Guideway structure
- Minor walls
- Trackwork
- Stations
- Parking Garages



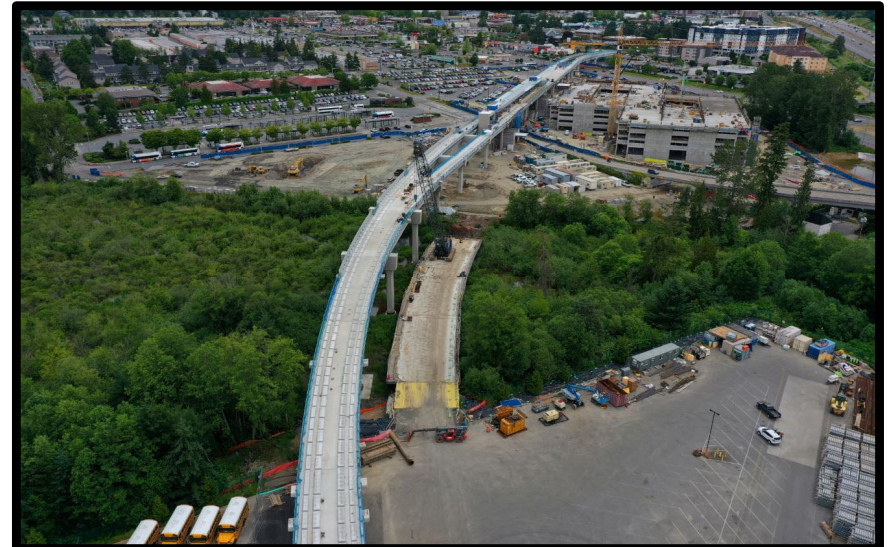
Current Construction - Guideway



Coating Guideway South of the Mountlake Terrace Transit Center



Guideway Conduit Ductbank work in Shoreline



Elevated Guideway Spanning Scriber Creek in Lynnwood

Current Construction – Walls



Installation of the Secant Pile Walls for the 185th Street Undercrossing



Soil Nail Walls Supporting Guideway in Mountlake Terrace



Acoustical Panels Along Guideway in Shoreline

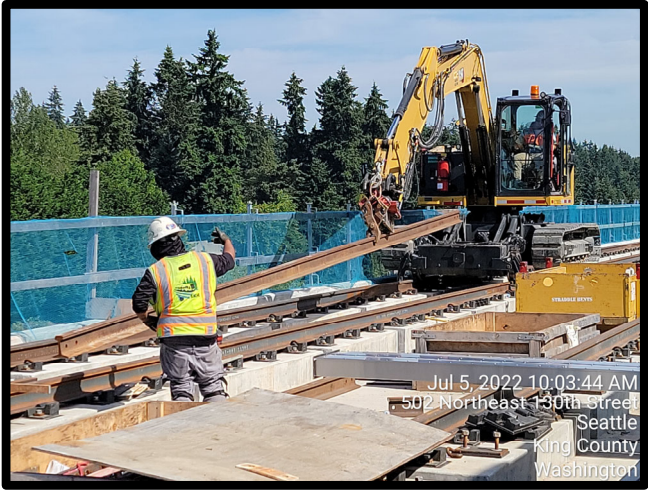
Current Construction - Trackwork



Constructing Track through the Lynnwood Station



Direct Fixation Trackwork on Elevated Guideway in Seattle



Installing Trackwork in Seattle

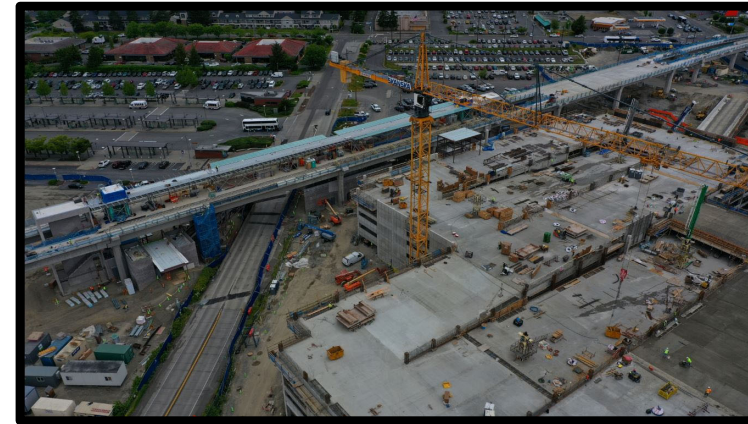
Current Construction – Stations



Installing Plumbing and Mechanical in the 148th Station in Shoreline



Mountlake Terrace Station North Plaza Area



Lynnwood Station, spanning 46th Ave W

Current Construction - Garage



185th Station Elevator Structure in north Shoreline



Aerial View of the Lynnwood Transit Center Station and Garage



Lynnwood Parking Garage Elevator Structural Steel

Upcoming Activities Q3 22 - 2023

Planned Q3 2022 - 2023

- Stations / Parking Garages
- Trackwork
- Landscaping
- Streets, Sidewalks, and Plazas
- Guideway Ductbanks
- Systems Installations
- Overhead Catenary System (OCS)
- Train Signal Systems
- Traction Power Sub-Stations (TPSS)
- Commence Testing and Commissioning



Thank you.

Thank you.



 [soundtransit.org](https://www.soundtransit.org)

