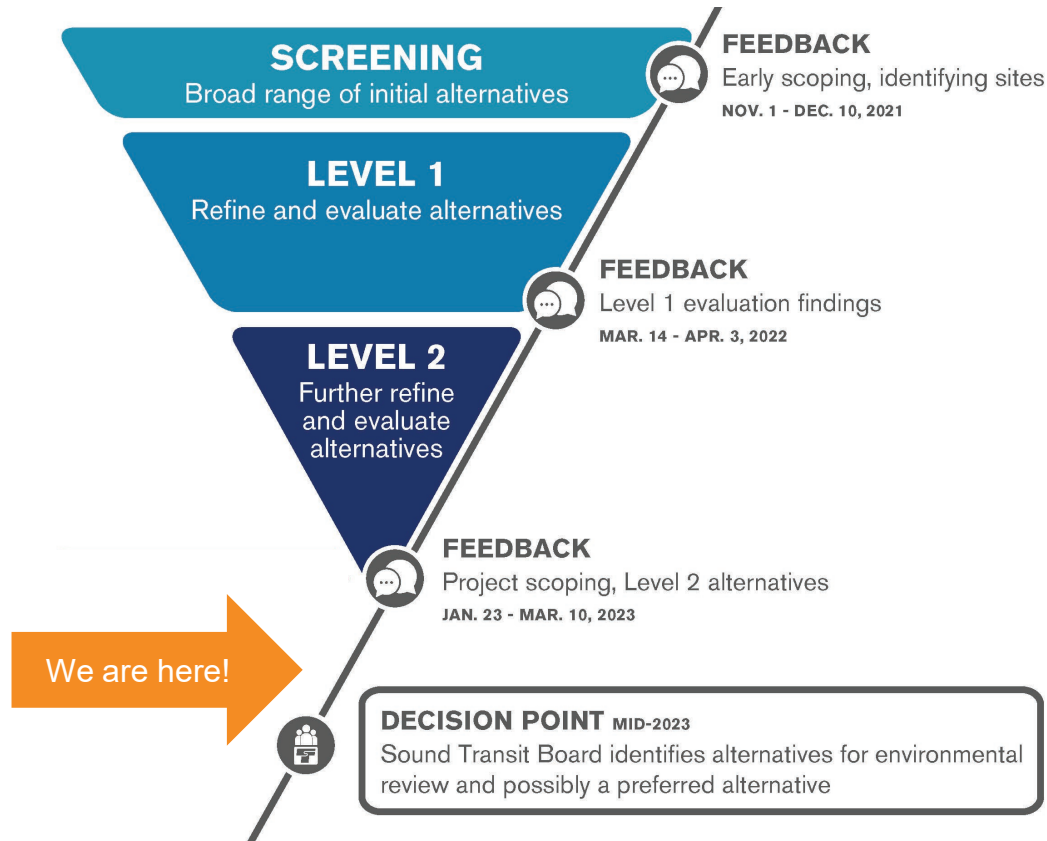


# *Everett Link Extension*



***CAG Recommendations  
March 29, 2023***

# Alternatives development process



# West Alderwood

## CAG recommendation:

ALD-B	Remove from further study
ALD-D	Preferred alternative
ALD-F	Continue to study



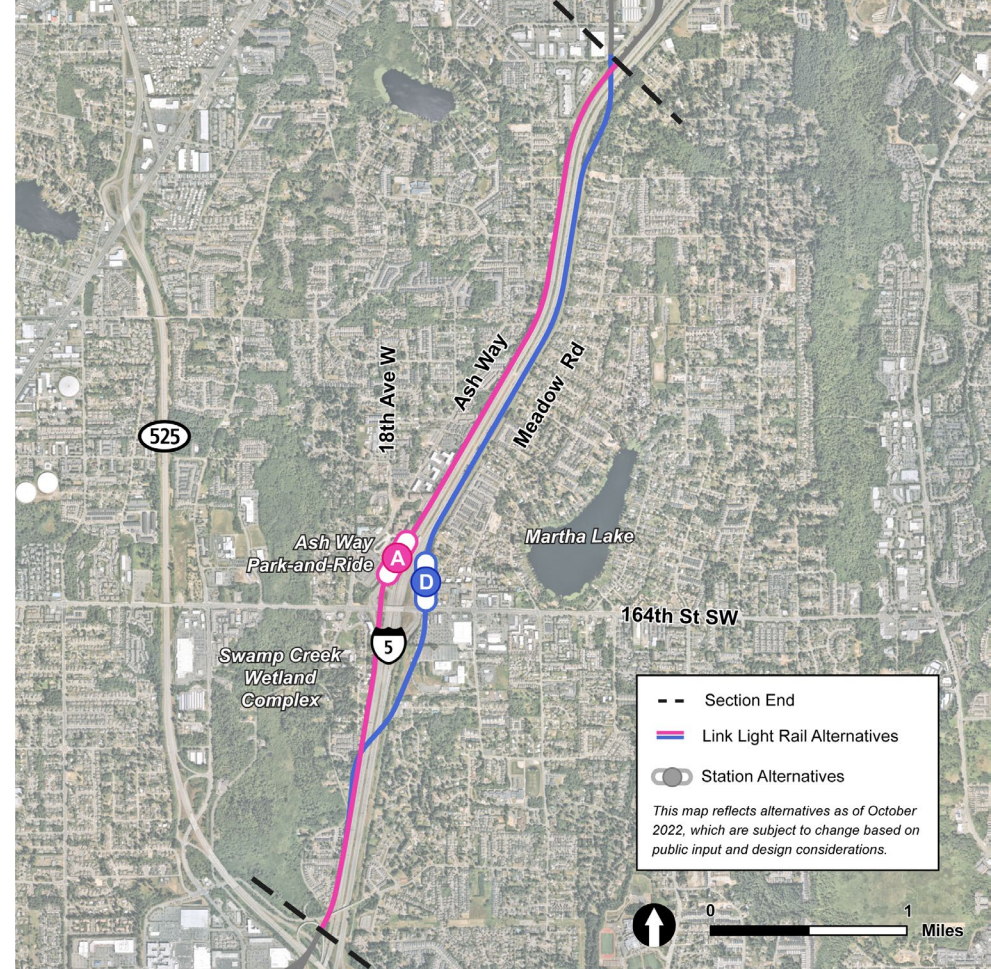


# Ash Way

## CAG recommendation:

ASH-A	Continue to study
ASH-D	Preferred alternative

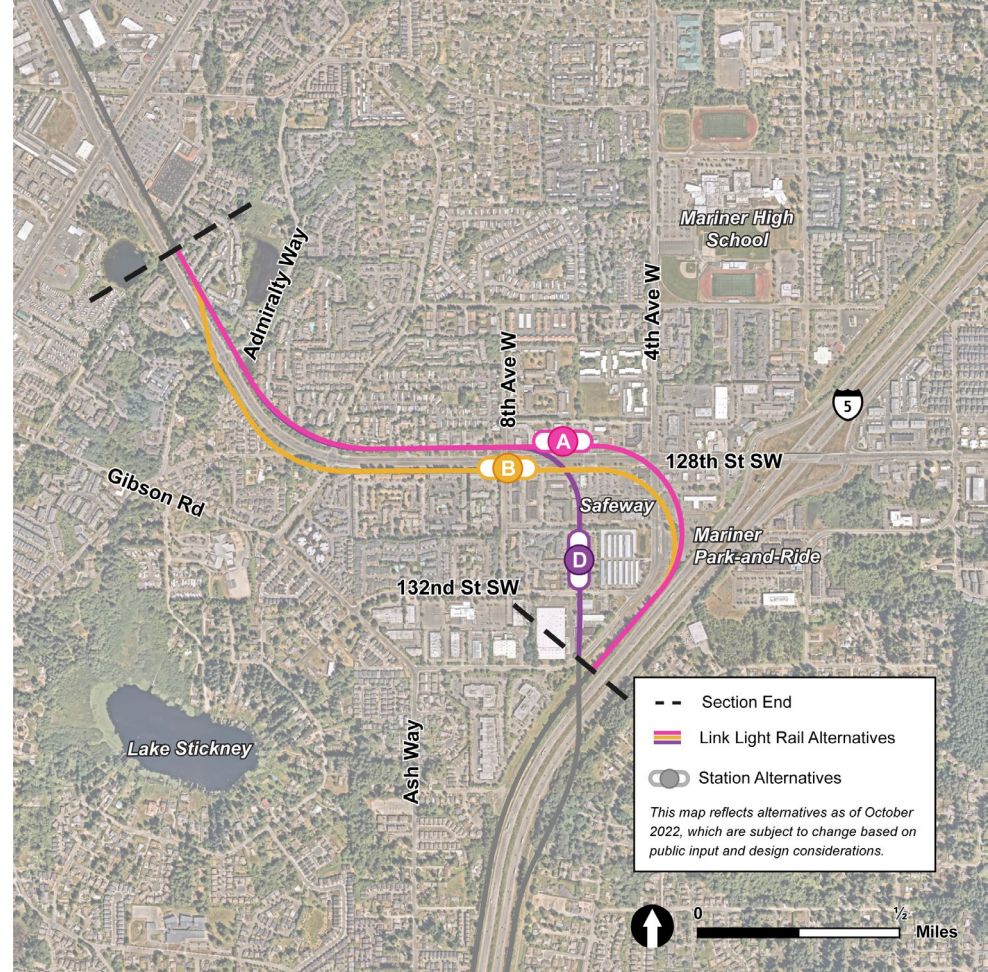
- The CAG noted that connections across I-5 and to the interurban Trail are important here.



# Mariner

## CAG recommendation:

MAR-A	Remove from further study
MAR-B	Preferred alternative
MAR-D	Continue to study

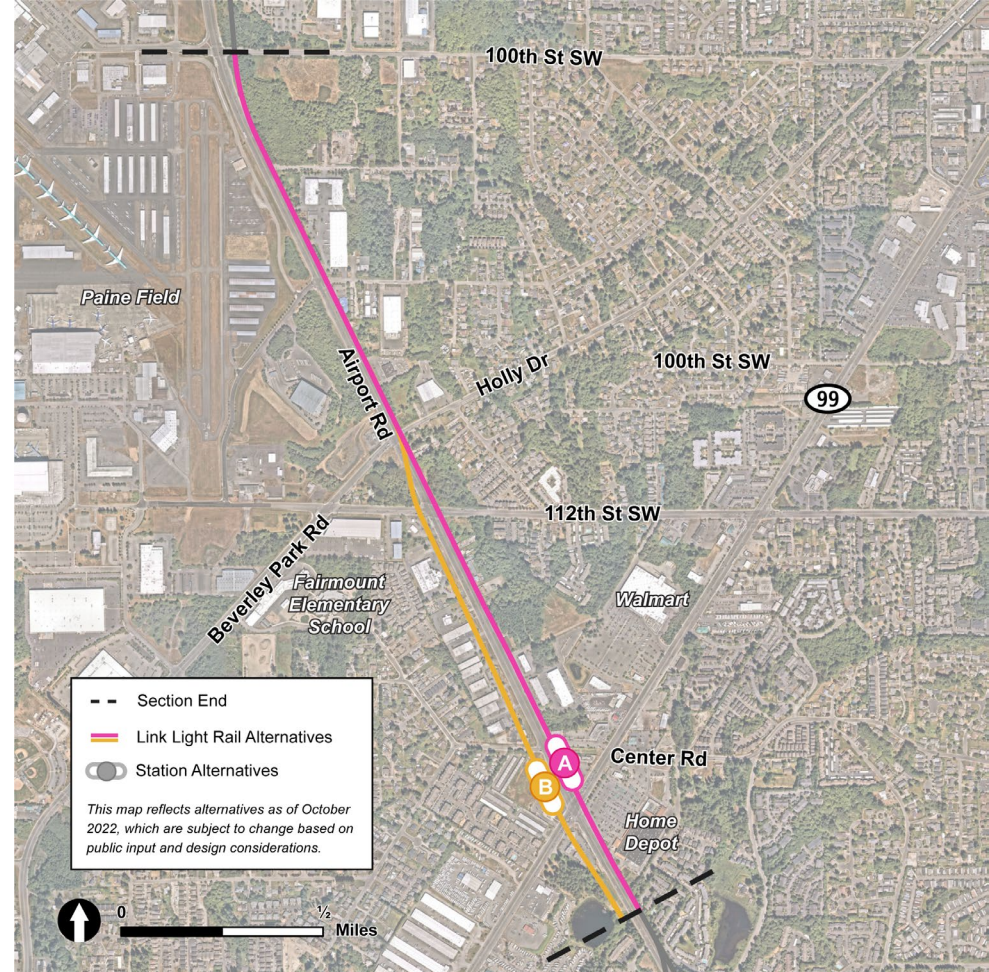




# SR 99/Airport Road

## CAG recommendation:

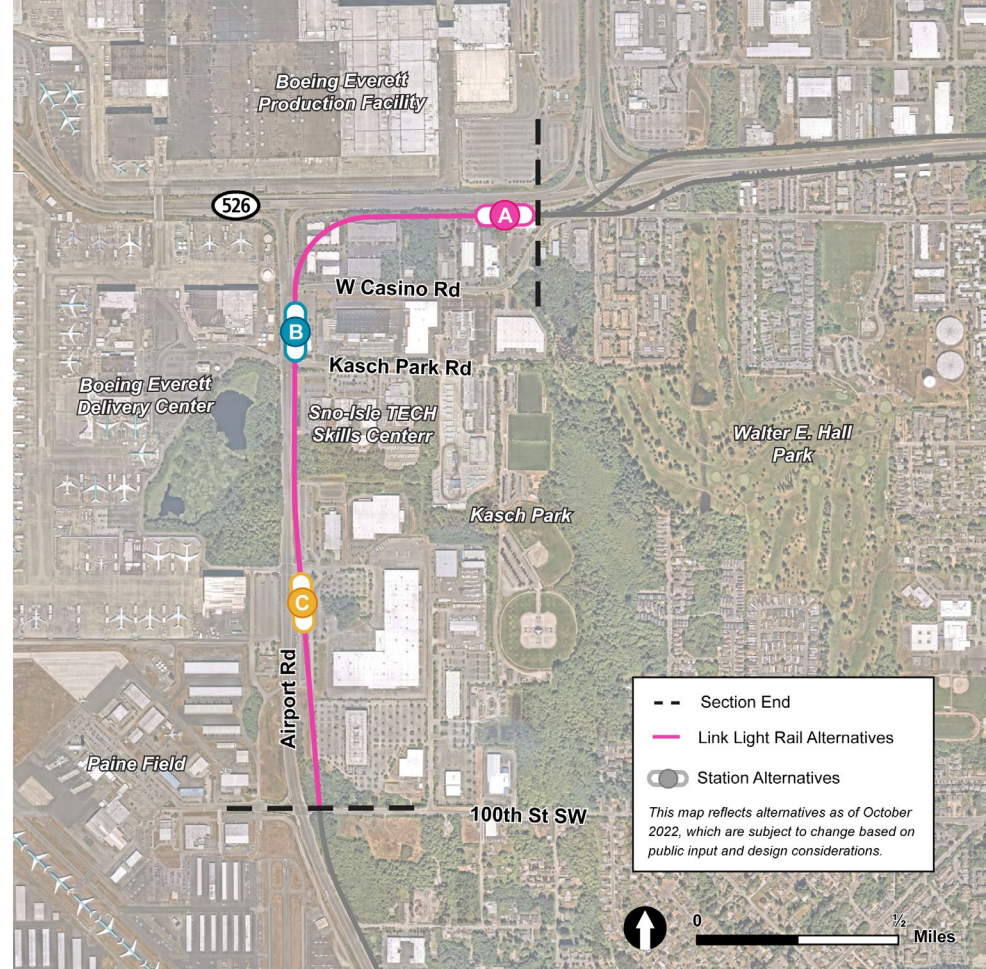
AIR-A	Preferred alternative
AIR-B	Continue to study



# SW Everett Industrial Center

## CAG recommendation:

SWI-A	Mixed support
SWI-B	Mixed support
SWI-C	Mixed support





# SR 526/Evergreen

## CAG recommendation:

EGN-A	Mixed support
EGN-B	Continue to study
EGN-C	Remove from further study
EGN-D	Continue to study
EGN-E	Continue to study

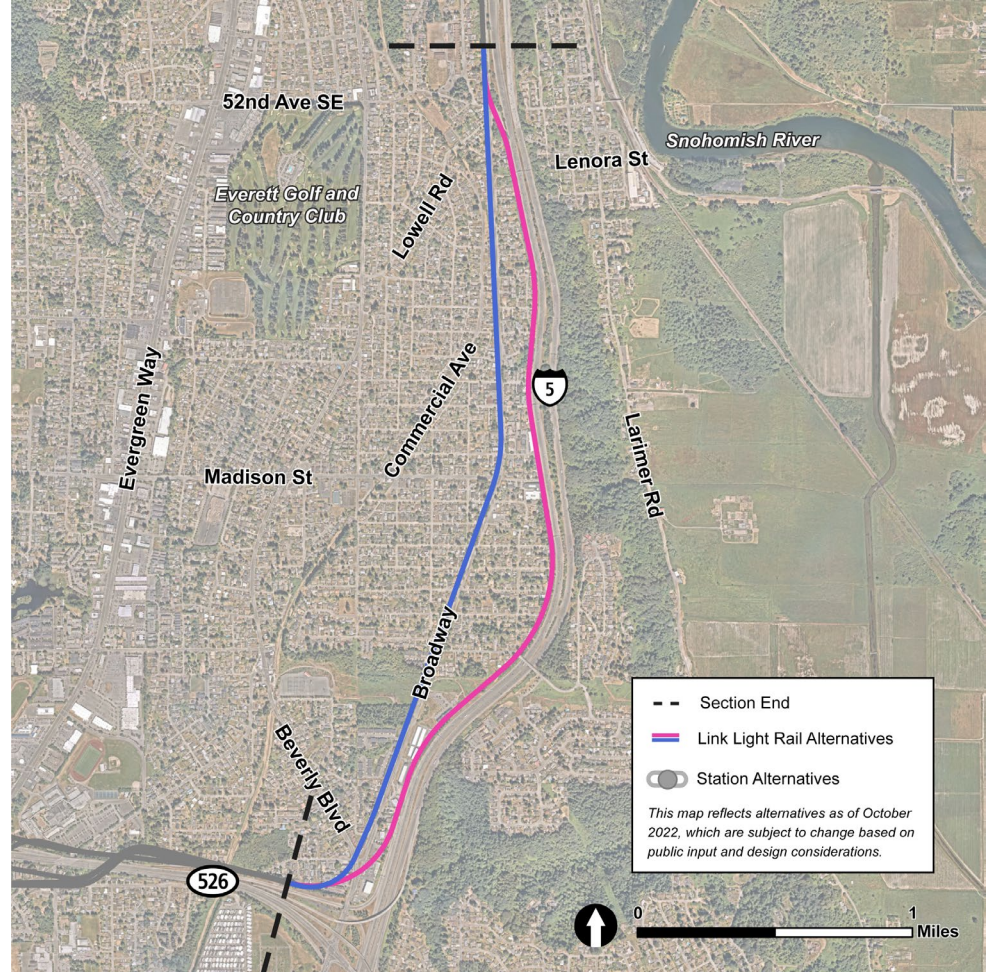




# I-5/Broadway

## CAG recommendation:

I-5	Preferred alternative
Broadway	Continue to study



# Everett Station

## CAG recommendation:

EVT-A	Remove from further study
EVT-C	Continue to study
EVT-D	Preferred alternative with McDougall alignment





# OMF North

## CAG recommendation:

Site B1	Continue to study a site in the area of B
Site B2	Continue to study a site in the area of B
Site E	Continue to study
Site F	Continue to study

