



MATOC Opportunity Industry Forum

September 24, 2024





Dr. Amit B. Singh

*President
Edmonds College*





Terri Mestas

*Deputy Chief Executive Officer
Capital Delivery*



Agenda

- **Welcome**
- **Agency Goals**
- **Owner of Choice**
- **ST3 Overview**
- **Opportunities**
- **Inclusivity**
- **Upcoming Events**
- **Q&A**

Building a World Class Transit System together

Safety: Shared commitment

Culture: Trust and transparency

Partnership: Joint problem solving

Opportunity: Broaden opportunities to support Sound Transit

Capacity Building: Build regional capacity and remove barriers

Innovation: Leverage innovation



Owner of Choice – Industry Engagement

Meaningful Engagement and Collaboration with Industry Partners

- Prompt Payment
- Streamlined Procurements
- Transparency & Outreach
- Inclusivity - SBE/DBE Outreach
- Contract Refinements
- Efficient Change Management & Conflict Resolution
- Workshops and RFIs to get feedback
- Collaborative Delivery



Aug. 21 Cost Estimating Summit included cost estimating professionals from 13 firms.

Owner of Choice - People

Investment in our team

- Integrated Department (Capital Delivery)
- Training - Technical
- Training - Soft skills
- Delivery consistency
- New team members
- Role and responsibility clarity

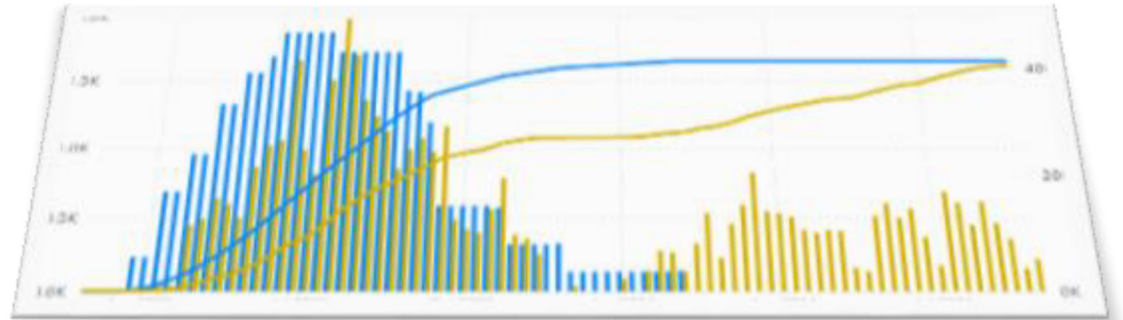


July 8 DBIA Progressive Design-Build (PDB) training, hosted by ST, included staff from WSDOT and the Port of Seattle.

Owner of Choice - Tools

Simplify, streamline, and scale for ST3

- New PMIS
- Bluebeam
- Workflows
- Updated Reports
- Organizational Charts
- Project Delivery Methods
- Updated Contracts
- ST2 Lessons Learned
- Key Performance Indicators



ST3 Overview

Voter-approved system

Link light rail 1 2 3 4 T

- Five lines
- 116 miles
- 83 stations

Sounder trains N S

- Two lines
- 91 miles
- 14 stations

Stride bus rapid transit S1 S2 S3

- Three lines
- 45 miles on I-405 and SR 522
- Serving 12 cities and connecting to light rail in Shoreline, Lynnwood, Bellevue, and Tukwila

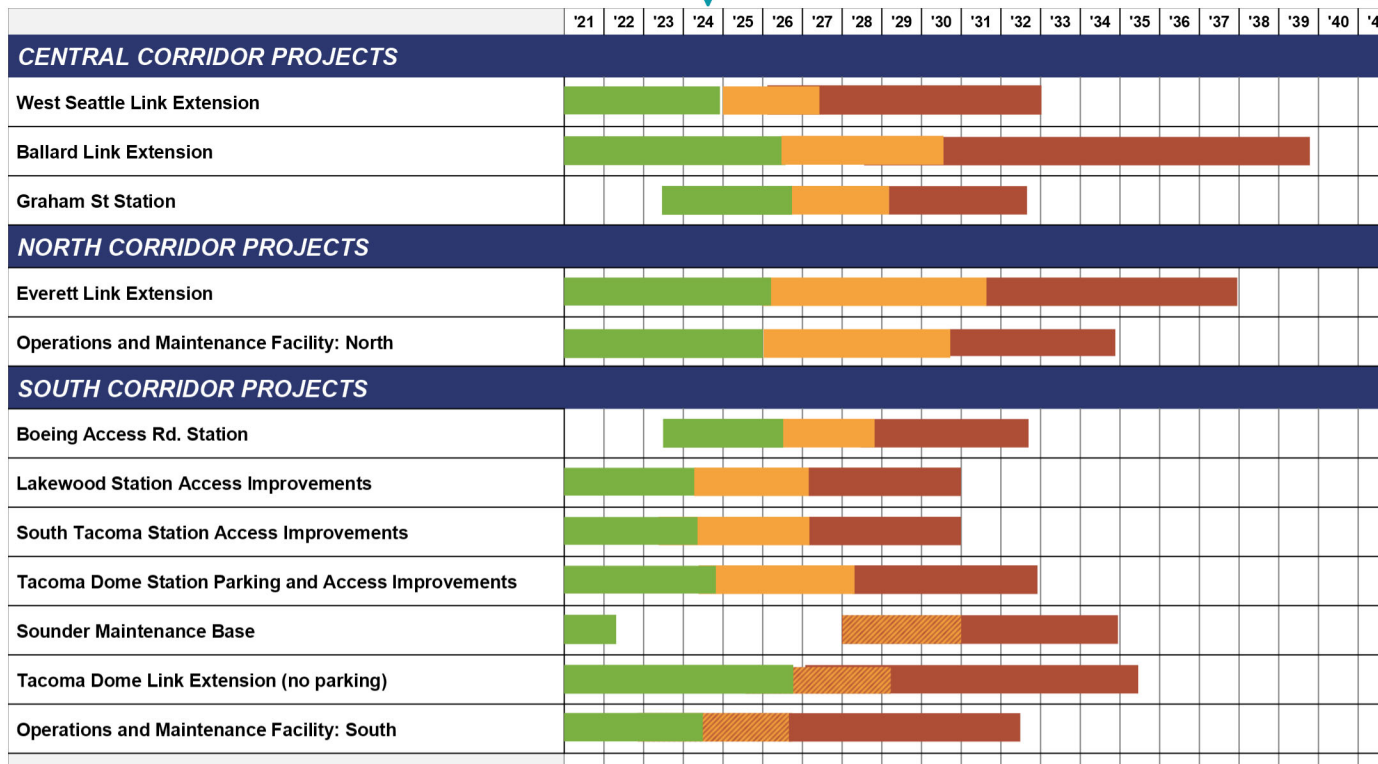


ST3 Schedule Progress



KEY:

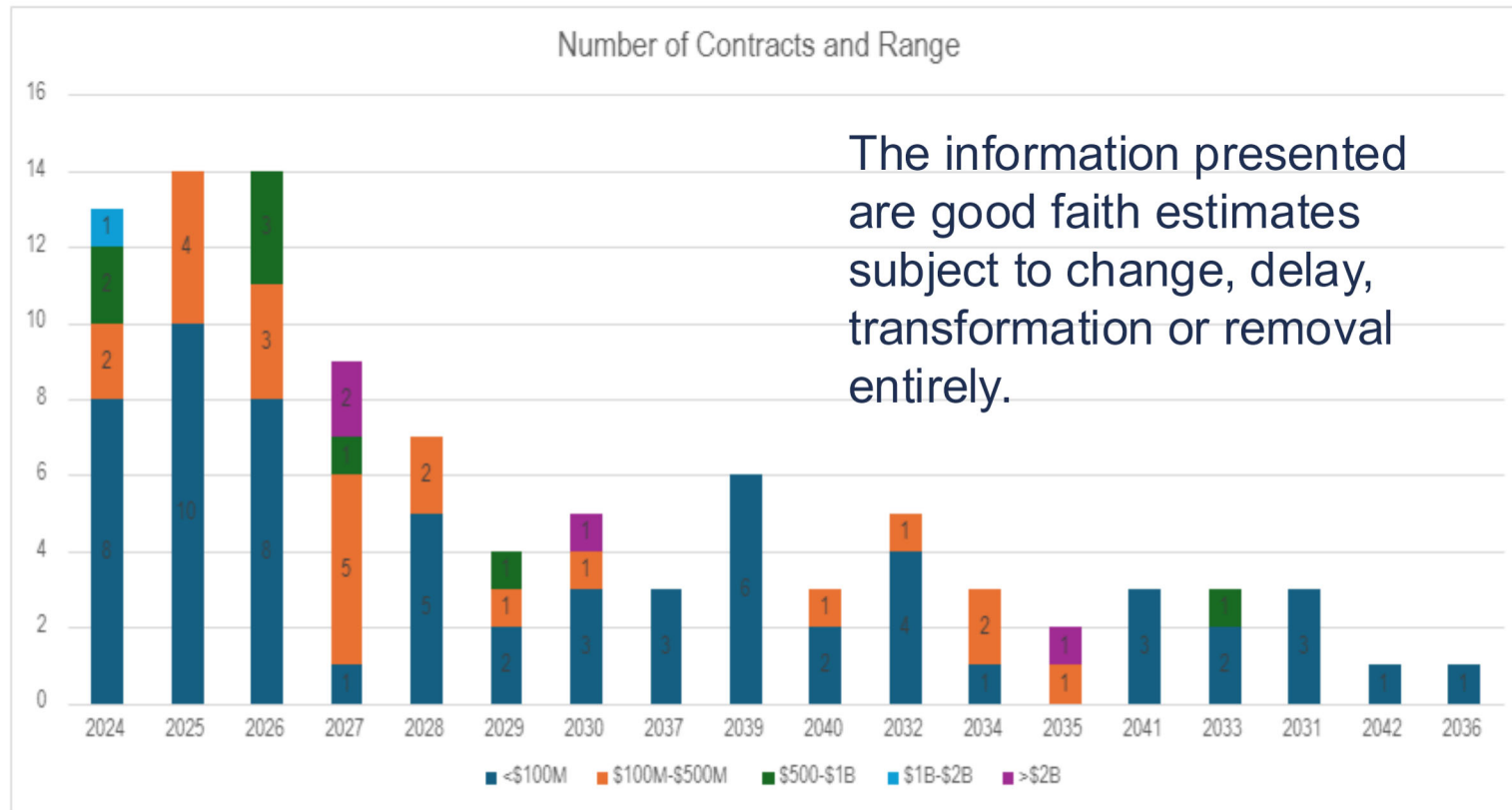
- Planning** (incl AA/CE/PE and EIS/EA)
- Final Design** (hatched indicates possible Design-Build)
- Construction** (incl Startup/Testing/Pre-Revenue/Float)



11 The information presented are good faith estimates subject to change, delay, transformation or removal entirely.



ST2/ST3 Procurements Forecast – 2024 to 2036



12 The information presented are good faith estimates subject to change, delay, transformation or removal entirely.

Construction Contracting Methodology

- Design – Bid – Build
- GC/CM
- Heavy Civil GC/CM
- Design-Build
- Progressive Design Build
- P3 (Design-Build-Finance)



State of Good Repair Program

“State of Good Repair” - a condition in which physical assets, both individually and as a system, are performing at a level at least equal to that called for in their as-built or as-modified design specification during any period.

Program includes:

- 100+ projects of varying sizes
- Design and PMCM Services needed
- Projects will vary in size from approx. \$75K to \$25M+
- New and renovation work
- Multiyear program
- Types of scope:
 - Vertical conveyance, Building Systems, Utilities, Trackway and systems



North Bound Rail Replacement in the DSTT – February 2024

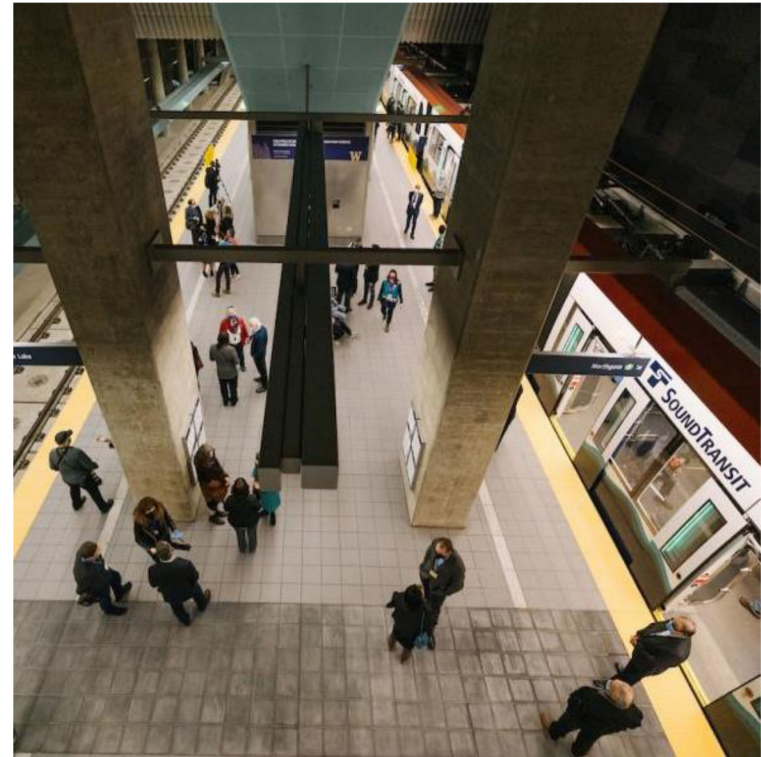
MATOC Opportunities

Multiple Award Task Order Contract (MATOC)

- Multi-year, On-Call Contracts
- Establish bench of qualified firms
- Base Term Plus Renewal Year Options
- Multiple Awards (Number of awards TBD)
- **MATOC Contract Capacity**
 - PMCM - \$TBD
 - Environmental Services - \$TBD
 - Design Services - \$TBD
- Small, Medium and Large Firms
- Task Orders
 - Staff Augmentation
 - Scope-based Services
- Innovation and Best Practices

MATOC

- Task Orders
 - Firm support by project
 - Firm support for a program or portfolio
 - Staff support for specific roles
- Task Order Process
 - Request for Task Order Proposal (RFTOP)
 - Evaluate
 - Negotiate
 - Task order award



MATOC Evaluation Criteria

- Past Performance
- Key Staff
- Understanding of Scope of Services
- Training and Development of Staff
- Staff Retention
- Approach to inclusivity
- Management of subconsultants
- Communication to team
- Responsiveness
- Ability to bring innovation and best practices
- Leverage Technology
- Ability to Monitor Performance and Apply Quality Control



Position Descriptions & Rates

- Comprehensive list of positions
- Ability to add positions during life of the contract
- Ability to assign staff to different positions as requirements are met
- Contemplating billable rates assigned to each position
- All-inclusive bill rates
- Refinement of reimbursable language
- ST will allow periodic escalation on rates

Conflict of Interest

CONFLICT OF INTEREST - For purposes of ensuring a level and fair playing field for all parties interested in responding to this RFQ (or ST's other related MATOC RFQs), ST considers that a potential conflict of interest may exist when, by virtue of prior or existing Contract(s)/Task Order(s) with ST, a prime Applicant, and/or the subconsultants/subcontractors that make up the prime Applicant's team, have prior knowledge of the Project(s)/Service(s) that are the subject of this instant procurement, which could give, or could be perceived to give, an Applicant/Proposer an unfair advantage over other potential Applicants/Proposers during this procurement process. Conflicts of interest are reviewed and determined on a case by case basis.

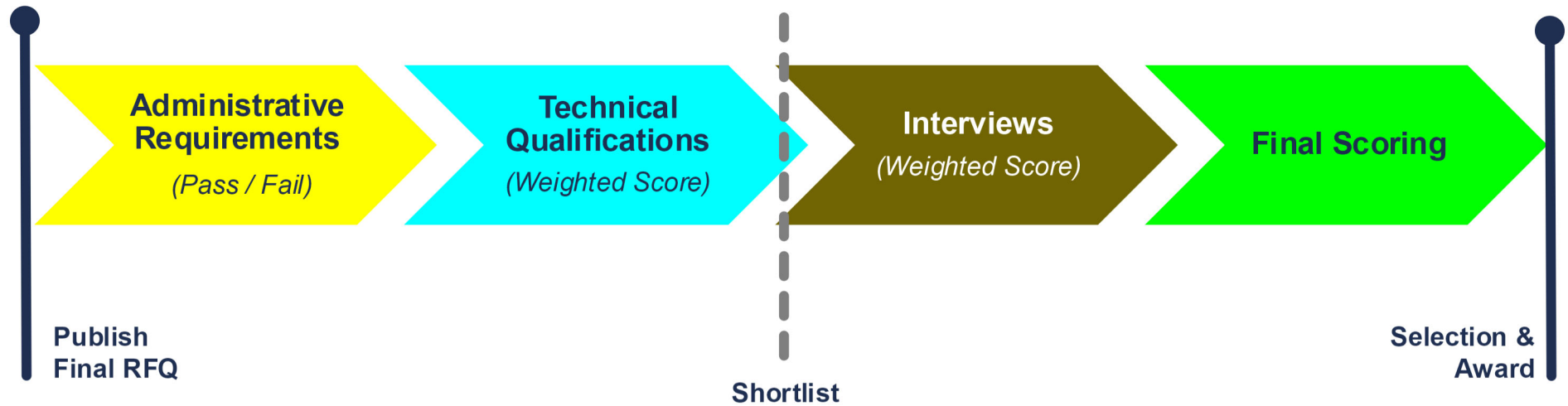
COI Guidance below will apply individually (by entity) to each of the prime Applicant, subconsultants/subcontractors, and the prime Applicant's Affiliates.

| | |
|-----------------------|---|
| PMCM Services MATOC | COI with: (i) Design Services MATOC, and other (i) Potential Project-specific procurements |
| Design Services MATOC | COI with PMCM Services. |
| Environmental MATOC | COI with None. Conflicts will be addressed on a TO basis |

Rules of Engagement

- Firms can submit one SOQ as a prime and/or as a sub on one or more teams
- Post-award, each firm will be allowed to proceed on one team, even if it is part of multiple teams receiving awards
- If awarded as a prime, a firm must accept the prime award
- New firms may be added as subs, post award (either electively or as replacements), subject to approval by Sound Transit
- No cap on Task Orders at this time

Procurement Process



PMCM Services MATOC

Sound Transit is seeking a pool of qualified firms to deliver project and construction management efforts.

PMCM (CMC) Scope

- Contract Review & Editing
- Pre-Construction Phase Administration
- Value Engineering & Assessment
- Utility Assessment
- Construction Staging
- Constructability Logistics
- Risk Assessment & Management
- 3rd Party & AHJ Coordination
- Progress Reporting
- Permit & Environmental Compliance
- Construction Management Services
- Resident Engineering
- Quality Assurance, Inspection & Training
- Change Management
- Cost Estimating
- Schedule Review & Assessment
- RFI & Submittal Processing
- Contractor Payments
- Civil Commissioning
- Safety & Security Monitoring

PMCM MATOC Potential Task Orders

- Opportunities
 - Stride (DBB)
 - Owner's Rep/PM
 - MOW North (PDB)
 - Owner's Rep
 - PDB SMEs
 - Service Delivery Projects CM
 - WSLE CMC
 - Early Works
 - SODO Area
 - Duwamish Corridor
 - West Seattle Tunnel and Stations
 - Trackwork/Systems
 - Manuals, training and other support

Procurement Schedule: PM/CM

- RFQ Issuance November 2024*
- RFQ Due Late December 2024*
- Interviews January 2025*
- Notice of Intent to Award Late February 2025*
- ST Board Approval March 2025*

**Tentative and subject to change.*

Environmental Services MATOC

Sound Transit is seeking a pool of qualified technical experts for a variety of environmental and planning efforts.

Env Services Scope of Work:

- Environmental Planning (NEPA/SEPA)
- Technical Analysis (Traffic, Noise, Ecosystems, Water Resources, etc.)
- Environmental Permitting
- Environmental Compliance and Auditing
- Ecosystem mitigation design and monitoring
- Stormwater permit compliance
- Cultural Resources and Tribal Engagement
- Environmental Due Diligence
- Contaminated materials remediation
- Hazardous materials studies
- Green Building
- Sustainable Construction Practices
- Climate Change Vulnerability Analysis
- Sustainability Data Collection and Analysis
- Zero Carbon Fleets and Facilities
- Other scope as needed

Environmental MATOC Potential Task Orders

- Environmental review and document preparation to meet the requirements of NEPA, SEPA, Section 106 of the National Historic Preservation Act, the Endangered Species Act (ESA), Section 4(f), and other associated regulations
- Ecosystem mitigation site monitoring and maintenance
- Environmental permitting in support of programmatic permits for state of good repair projects
- Noise monitoring and abatement assessments to support compliance with project NEPA requirements
- Cultural resources monitoring and reporting
- Environmental site assessments, groundwater monitoring, remediation planning and oversight, and support for regulatory close-out for contaminated properties
- Environmental audits
- Greenhouse gas inventory and reporting
- Sustainability inventory in support of the annual sustainability report
- Sustainability research on topics such as greenhouse gas emissions, climate change adaptation and resiliency, fuel efficiency, and carbon neutrality
- Support for development and implementation of the 5-year Sustainability plan
- Zero Emissions bus implementation strategy
- LEED and Envision documentation and certification
- Green building expertise
- Sustainable materials expertise
- Green infrastructure (stormwater management)

Procurement Schedule: Environmental

- RFQ Issuance October 2024*
- RFQ Due Late November 2024*
- Interviews December 2024*
- Notice of Intent to Award Late January 2025*
- ST Board Approval February 2025*

**Tentative and subject to change.*

Design Services MATOC

Sound Transit is seeking a pool of qualified architects, engineers, and technical experts for a variety of design efforts.

Design Scope:

- Planning & Programming
- Site Investigations (including geo-tech)
- Alternatives Analysis
- Basis of Design (BOD)
- Design Services (architecture & engineering)
- Constructability Reviews
- Cost Estimating
- Plan Check & Permitting Support
- Construction Admin. (DSDC)
- Phasing Support
- Modeling
- Studies and analysis
- Other scope as needed

Design MATOC Potential Task Orders

- Opportunities
 - PBD SMEs
 - Everett Link Extension
 - Tacoma Link Extension
 - Service Delivery Projects
 - WSLE
 - Systems Design by scope bundle
 - Manuals, training and other support



Procurement Schedule: Design

- RFQ Issuance November 2024*
- RFQ Due Late December 2024*
- Interviews January 2025*
- Notice of Intent to Award Late February 2025*
- ST Board Approval March 2025*

**Tentative and subject to change.*

Inclusivity & Workforce Development

Equity in Infrastructure Pledge

Monumental Commitment to Equity

The Equity in Infrastructure Project (EIP) commits to build generational wealth and reduce the racial wealth gap by improving public infrastructure contracting practices to create more prime, joint venture and equity contracting opportunities for Historically Underutilized Businesses (HUBs).



Seattle Pledge Signatories

Sound Transit.
King County
City of Seattle

Port of Seattle
Community Transit
Hill International

Inclusivity

Approach and Examples of Success

Participation Requirements

- DBE Goals
- Small Business Goals
- Reporting on SBE, MBE, MWBE, WBE Veteran, and LGBTQ participation

Key Staff - Inclusivity Lead

Mentor Protégé Program

- Meaningful Capacity Building
- Measurable Outcomes
- WSDOT/ST Capacity Building Mentor Protégé Program (CBMPP)

Community Transformation Programs

- Internship Program
- Scholarships
- K-12 School STEM Engagement
- Community-At-Large



Upcoming Events (Partial List)

- **BuildIT – AEC/Workforce Reception** **October 1**
- **Construction Inclusion Week** **October 9**
- **ST Regional Construction Expo (Virtual)** **October 17**
- **North Puget Sound Small Business Summit** **November 7**
- **CMAA/DBIA Joint Event** **November 13**
- **AGC STRIDE/MOW N Open House** **November 14**
- **ST Capital Delivery Forecast 2025** **TBD**

<https://www.soundtransit.org/get-to-know-us/doing-business-with-us>

Questions?



 *soundtransit.org*

