

Crosslake Connection Update

East Link I-90

*Presentation to ST Community Oversight Panel
1/14/2026*



Agenda

- Introductions

Tony Raben – Executive Project Director

Kerry Pihlstrom – Executive Director, Asset Transition Office

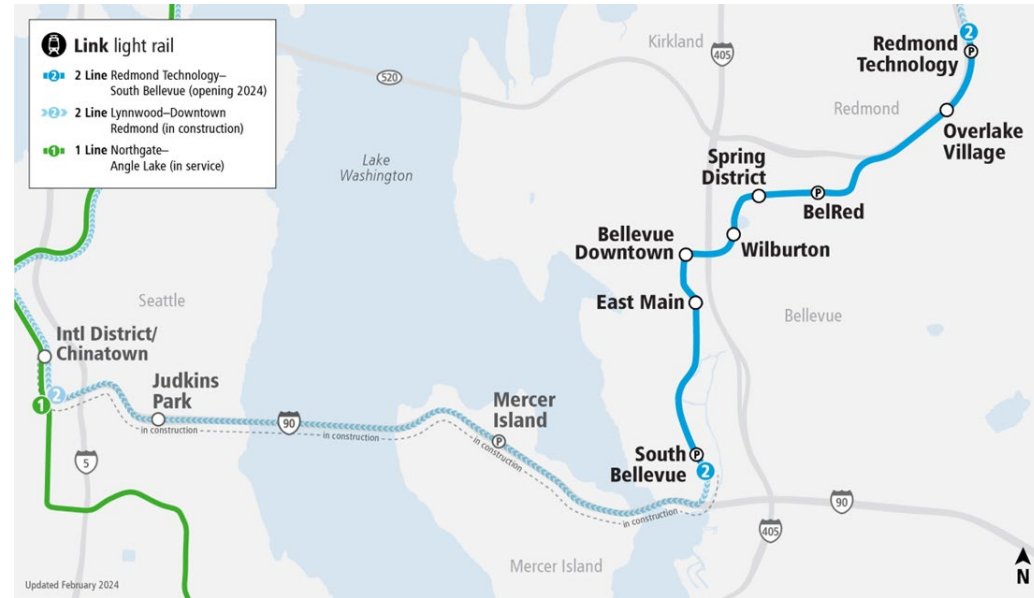
- Project Completion Update
- Pre-Revenue Operations Update
- Questions

Crosslake Connection Project Update

Crosslake Connection

Key Elements

- 7-mile connection between South Bellevue and International District Station
- Adds 2 new stations
- Service every 8 minutes during peak hours
- Crosslake Connection is in pre-revenue operations



East Link Extension Update

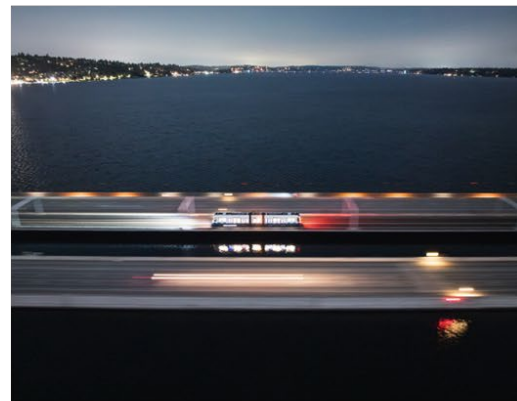
Project status

- 99.8% complete
- Starter 2-Line open (6+ out of 14 miles, 8 out of 10 stations)
- Pre-revenue service started for Crosslake Connection
- On Track for a May 2026 Opening



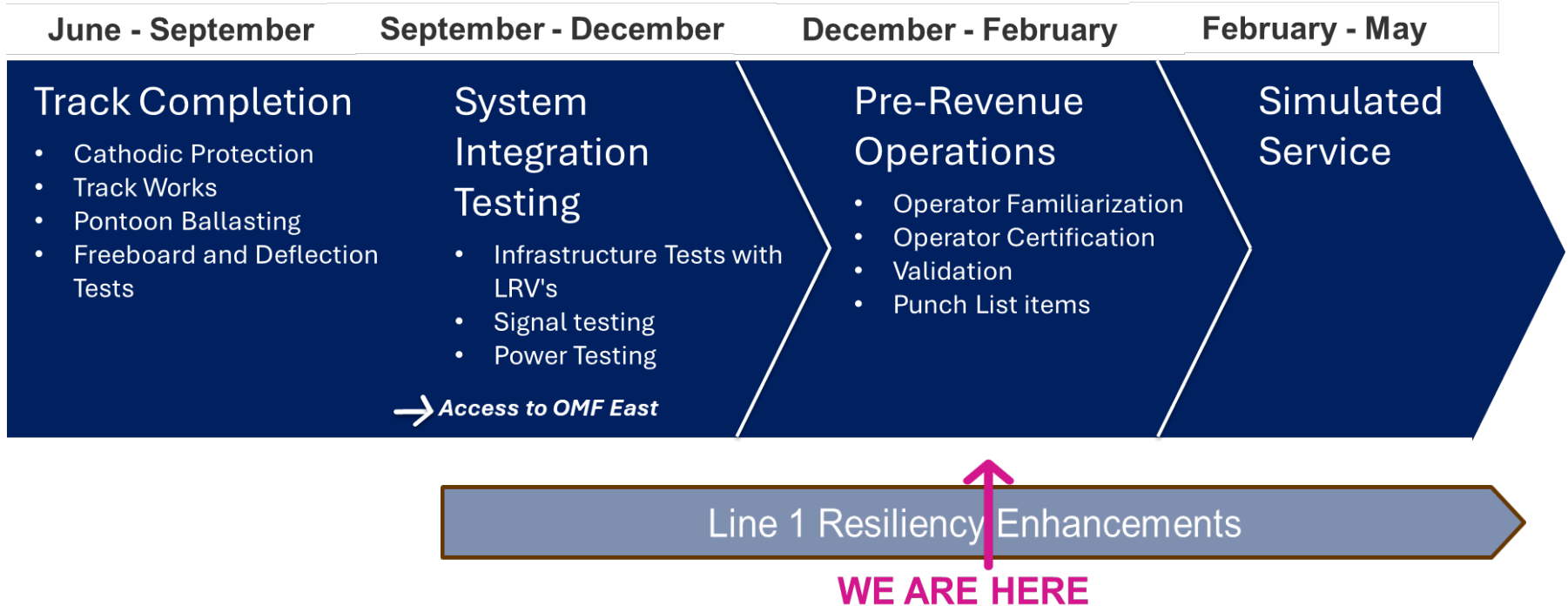
Recent Completed Work

- Nylon Inserts / Dual Blocks
- Floating Bridge Cathodic Protection
- System Integrated Testing
- Freeboard and Deflection Tests
- First LRV over Floating bridge – 5/21
- First Electrified LRV over Floating bridge – 9/8



East Link Extension Update

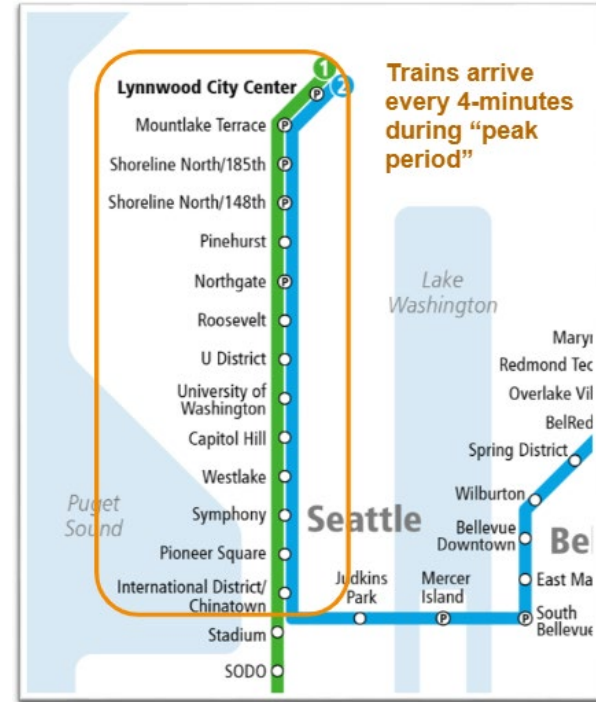
Progress and Completion Timelines



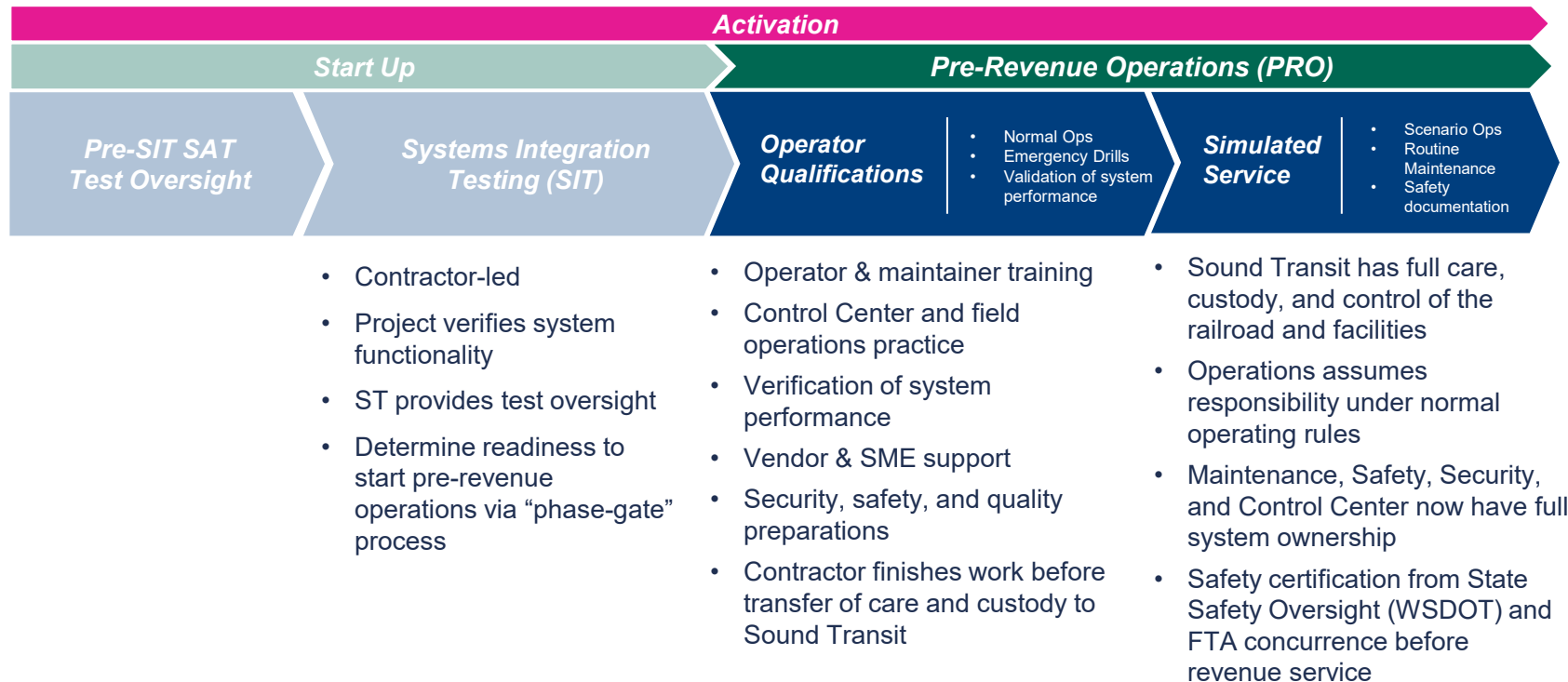
Pre-Revenue Operations Update

Pre-Revenue Operations Update

- Operator training and qualification is progressing on target
- Four-car trains are now running between South Bellevue and International District stations
- Simulated service is expected to begin in next month
- During simulated service, 1 and 2 Line trains will run every four minutes between Lynnwood City Center and International District Station



Activation Process Overview



Thank you.



 [*soundtransit.org*](https://soundtransit.org)



East Link Extension Update

Progress and Completion Timelines

