

PSRC Update Sound Transit Community Oversight Panel

December 10, 2025

Ben Bakkenta, AICP
Director of Regional Planning



Puget Sound Regional Council

Topics covered today

- Regional Planning Framework
- Regional Transportation Plan Update



Central Puget Sound Region



- 4.5 million people
- 2.2 million jobs
- 4 counties
- 82 cities and towns
- Urban and rural
- 6,400 square miles
- 1,000 square miles urbanized



Puget Sound Regional Council

What we do

- Metropolitan Planning Organization, and state RTPPO
- Planning: growth, economy, transportation
- Funding: Federal transportation funds (~\$300 million/year)
- Regional data and forecasts
- Forum for regional issues

Our members

- Cities, Counties, Ports, Transit
- State agencies, Tribal governments



Executive Dave
Somers
*Snohomish County
– PSRC President*



Executive Ryan Mello
*Pierce County –
PSRC Vice President*

Population Growth 1960–Present

Seattle

1960 557,087

1990 516,259

2025 816,600

Region

1960 1,512,979

1990 2,748,895

2025 4,534,300

Population Growth 1960–Present



Seattle

1960	557,087
1990	516,259
2025	816,600

Boston

1960	697,197
1990	574,283
2024	673,458

San Francisco

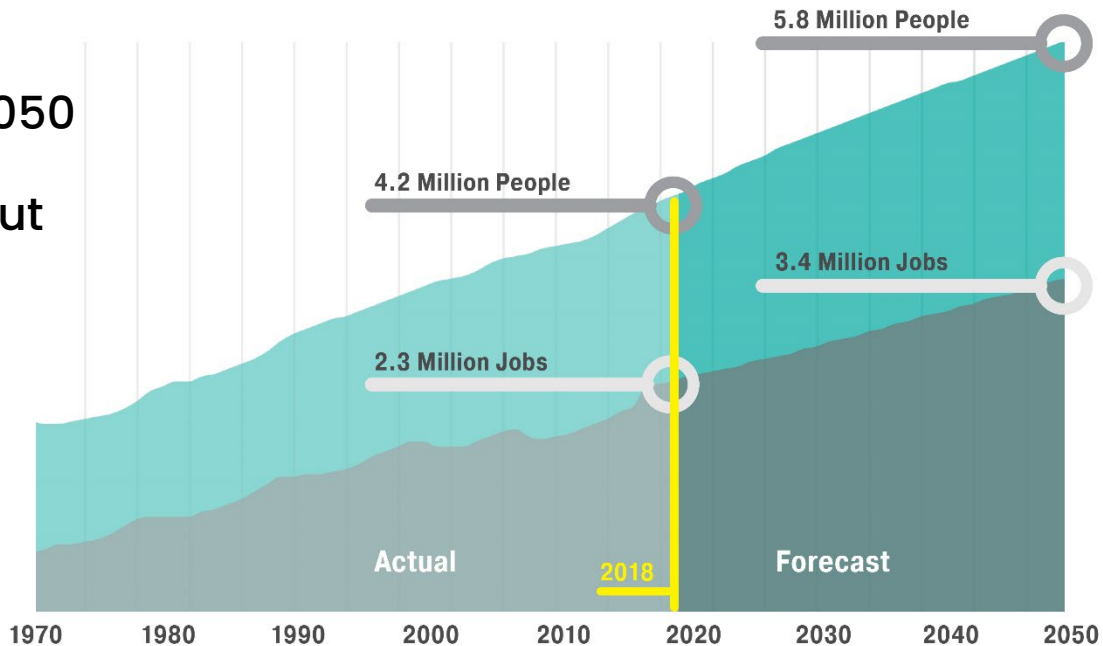
1960	740,316
1990	723,959
2024	827,526

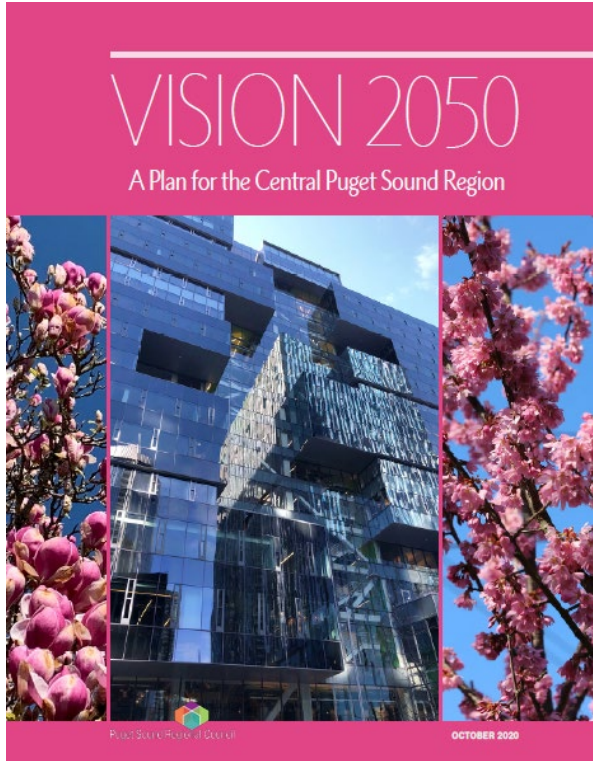


Regional 2050 growth forecast



- Region projected to grow by about **1.3 million people** by 2050
- Region projected to add about **1.1 million jobs** by 2050





**Adopted
October 29, 2020**

REGIONAL POLICY DIRECTION

VISION 2050

—Multicounty Planning Policies—
—Regional Growth Strategy—

DETAILED FUNCTIONAL IMPLEMENTATION PLANS

Regional Transportation Plan

—Metropolitan Transportation Plan—

Regional Economic Strategy

—Comprehensive Economic Development Strategy—

Implementation

2020	2021	2022	2023	2024	2025	2026
VISION 2050 Adoption	VISION 2050 Implementation (Housing Strategy, Equity Strategy, other guidance)				Local Plan Certification	
	Countywide Planning Policies & Local Growth Targets	Local Comprehensive Plan Updates				
	Regional Transportation Plan			Regional Transportation Plan		
	Regional Economic Strategy				Regional Economic Strategy	

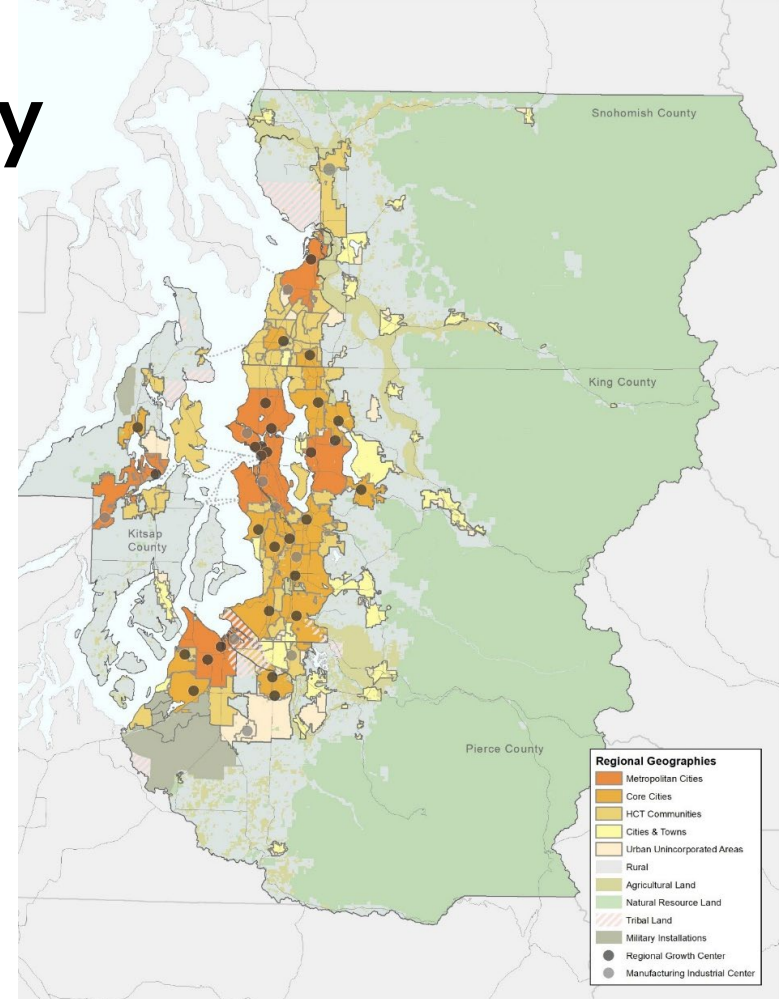
Equitable TOD Plan

- High-capacity transit plans must conform with long-range transportation plan
- ST3 requires a “regional equitable TOD strategy...consistent with TOD plans developed...by any regional transportation planning organization within the regional transit boundaries.”
- VISION 2050 Regional Growth Strategy is the region’s equitable TOD strategy
- Conformity Report adopted in 2016



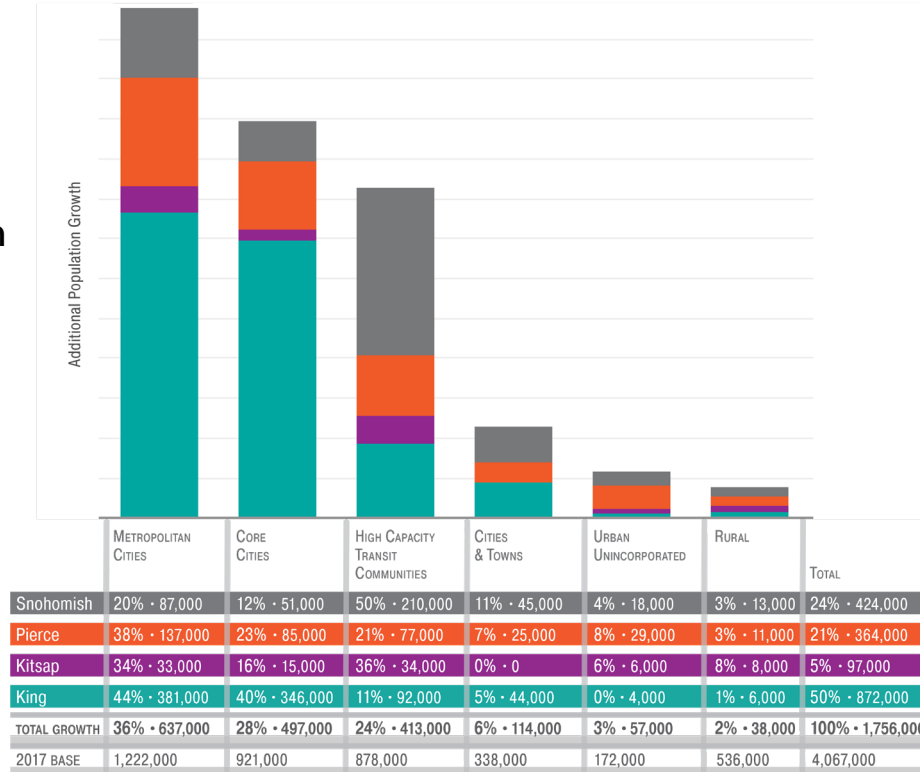
Regional Growth Strategy

- New regional geography :
High-Capacity Transit Communities
- Higher growth allocations in the most urbanized areas
- Lower growth allocations in urban unincorporated and rural compared with long-term trends
- Better jobs-housing balance by shifting employment allocation from King County



Regional Growth Strategy

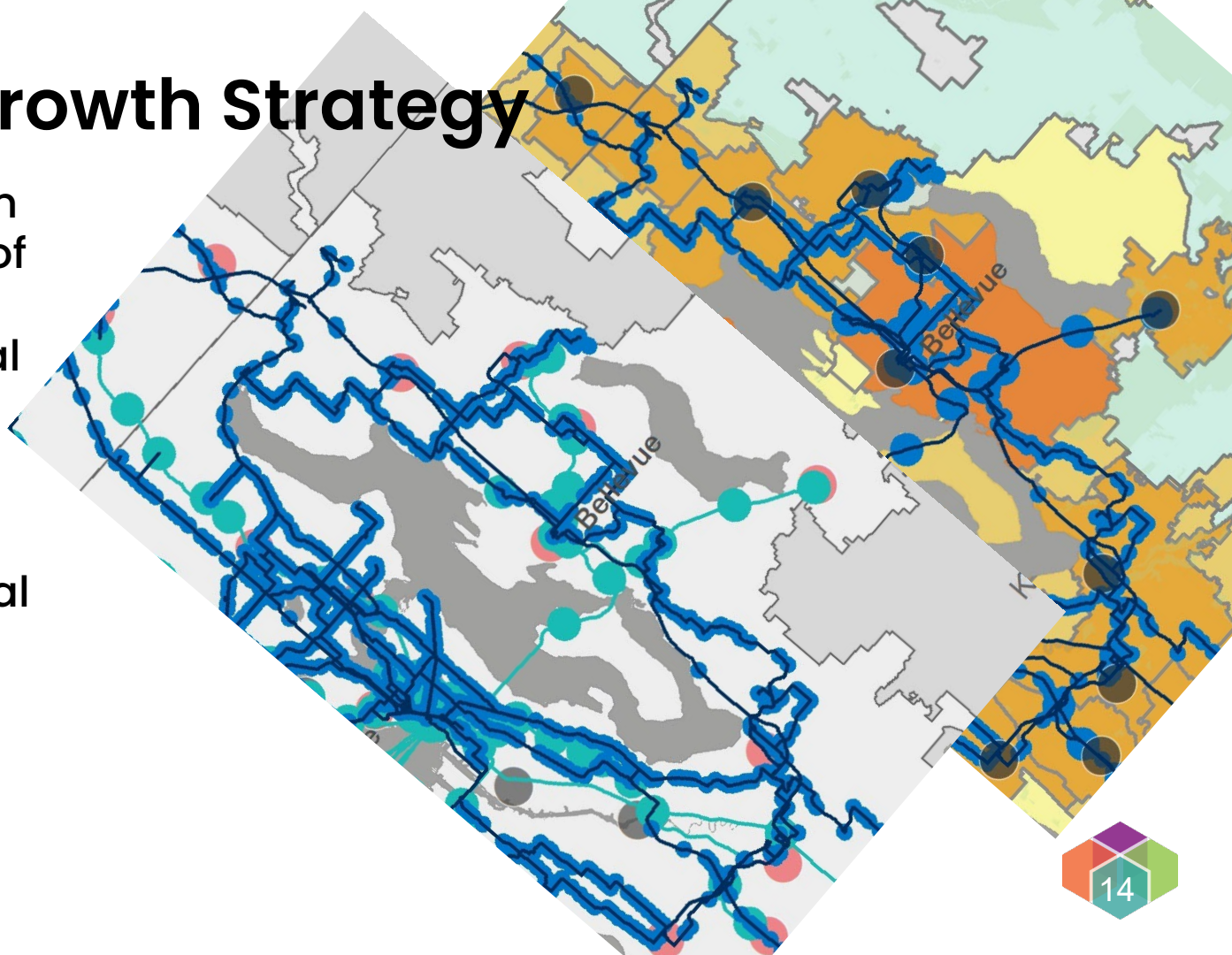
Population Growth 2017–2050



- Increased growth in mid- to large-size cities with regional growth centers and high-capacity transit
- Decreased growth in Rural areas
- Decreased growth in unincorporated areas without transit and smaller cities
- Increased jobs-housing balance in the region

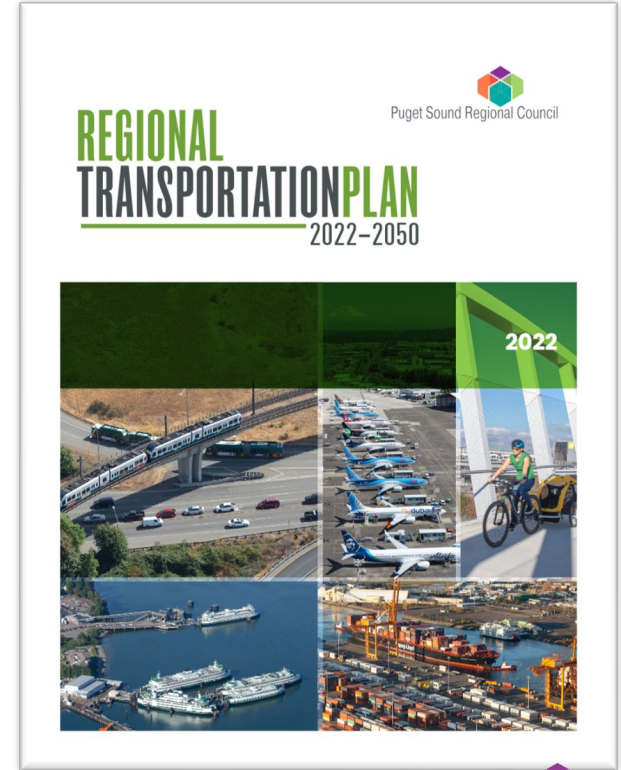
Regional Growth Strategy

- 65% of population growth and 75% of employment growth in regional growth centers & near HCT
- Lower growth allocations in rural lands
- Better jobs-housing balance



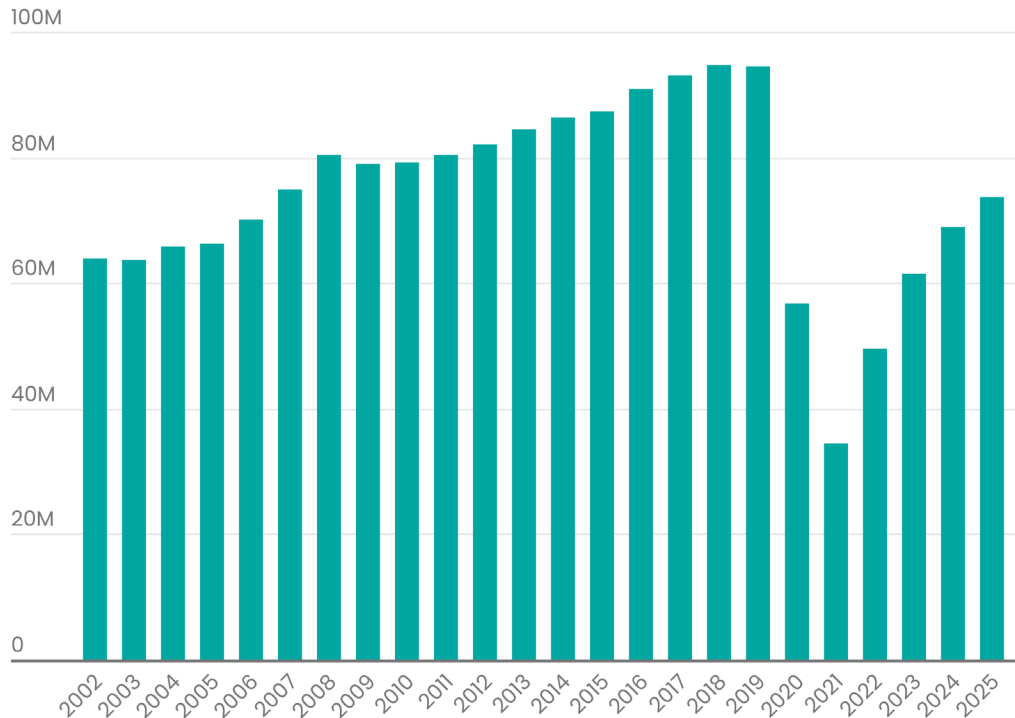
What is a Regional Transportation Plan?

- Long-range plan (20+ years) identifying all transportation investments into the future across the region
- Guided by state and federal requirements, regional policies
- Built from city, county, transit and state agency plans
- Must include information on how the full plan will be funded into the future
- Regional scale planning, but local implementation



Transit Ridership continues to recover

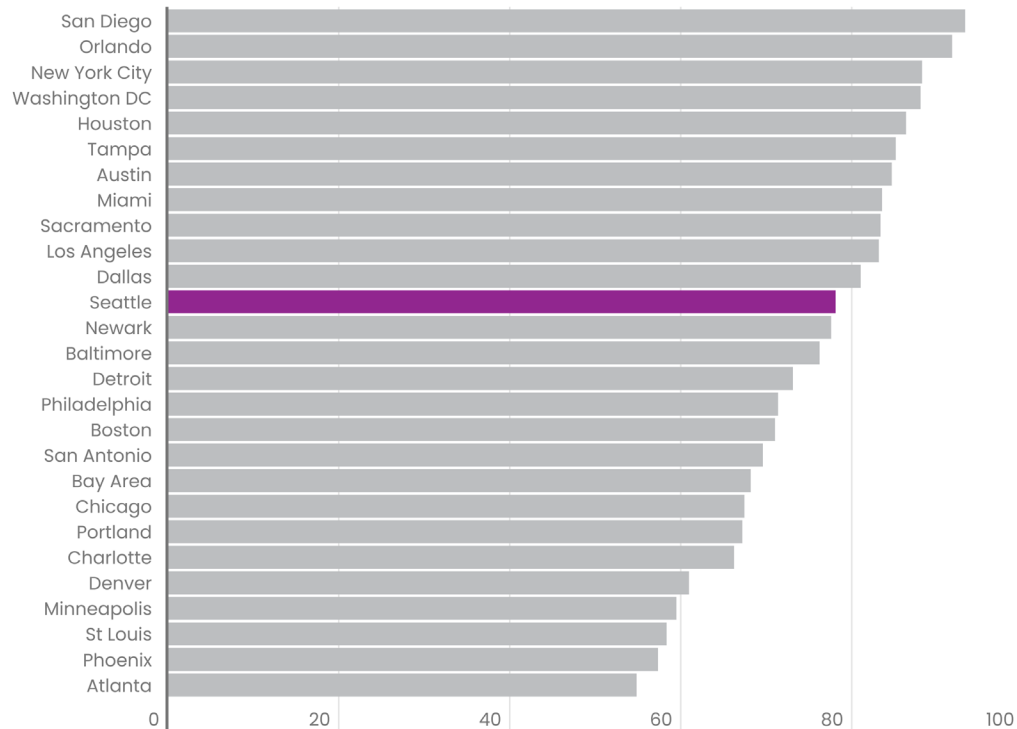
Jan-May Total Boardings, 2002-2025



There were approximately **74 million** boardings from January to May 2025 on the Region's transit system (**78%** of 2019 ridership)

Recovery is like other Metro Areas

Ratio of Jan-May Boardings: 2025 / 2019

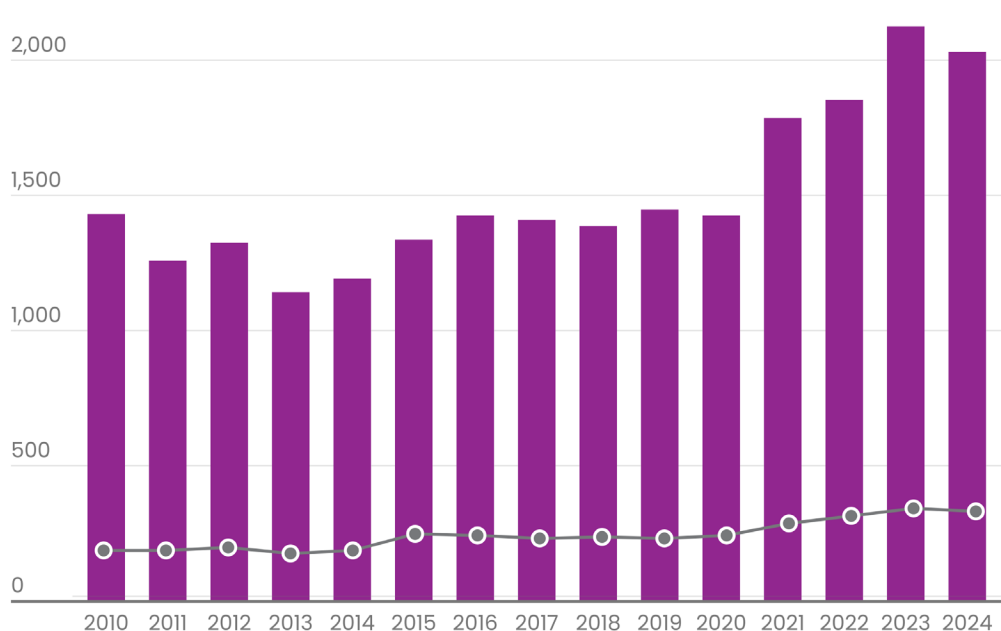


Source: USDOT Federal Transit Administration National Transit Database



Traffic Related Deaths at historic levels

Traffic Deaths & Serious Injuries 2010–2024

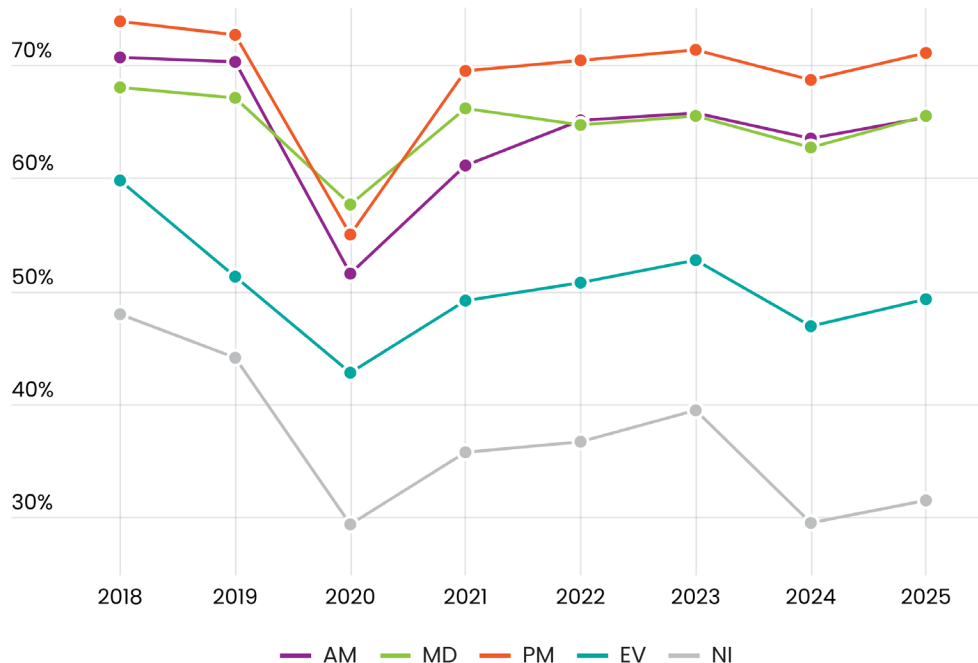


335 people died on the region's roadways in 2024 and **1693** people were seriously injured.

Source: Washington State Department of Transportation

Congestion rising – still lower than 2019

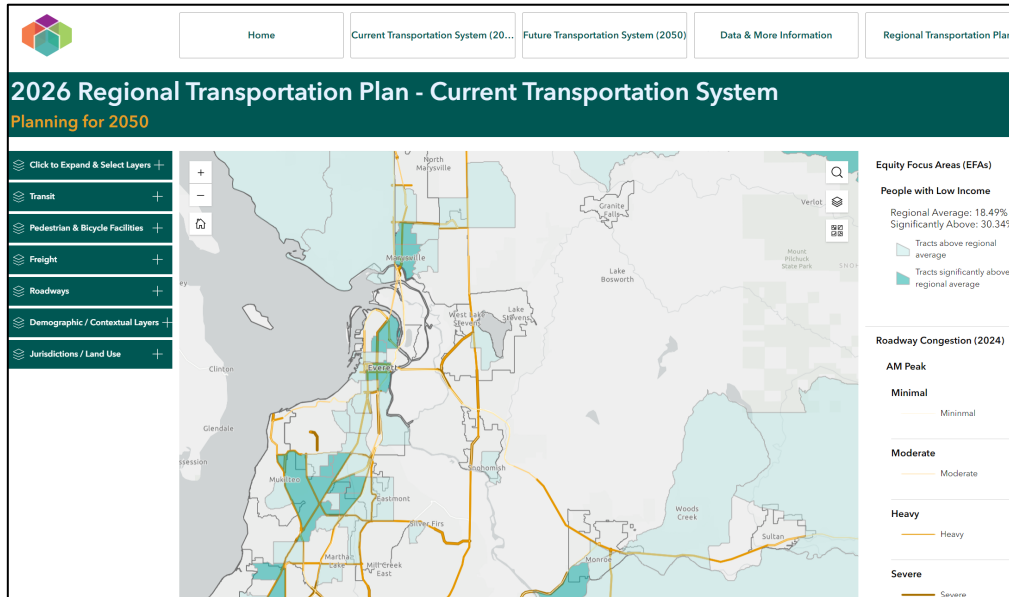
% Heavy & Severe Congestion, APR 2018–2025



AM Peak congestion remains below pre-covid levels. No time periods have more miles of congestion than 2019 but PM Peak is close.

How is the Plan developed?

Data was collected on the current transportation system and where people and jobs are to assess needs and gaps



How is the Plan developed?

- Proposed investments were then collected from all city, county, transit and state plans through 2050, including:
 - Maintenance, preservation and operations needs
 - Expanding capacity of the system for all modes – roads, transit, pedestrian / bicycle, etc.



Board Priorities and RTP Foundations



Maintain and preserve the existing system

Create a multimodal system that works for everyone

Promote a safe and healthy transportation system

Address the region's climate goals

Ensure the system performs for the region

Develop a practical financial strategy

An Emphasis on Transit



- Fully fund transit
- Complete the regional HCT system
- Grow local transit by 2% annually

Sound Transit future service



RTP Financial Strategy

- Total plan cost: \$335B
- Current Law Revenues: \$277B (83%)
- Gap: \$58B (17%)
- The financial strategy is not an adopted budget – it is a general plan with reasonable assumptions for any new or increased revenues
- Possible sources: Road Usage Charge or Highway Use Fee, sales tax, property tax, vehicle taxes and fees



RTP Engagement Hub

Available on the public facing [RTP Engagement Hub](#):

- Background materials
- Plan scenarios and board presentations
- Comment form and information
- Current Transportation System Report and Visualization Tool
- Future Transportation System Report and Visualization Tool



Adoption Schedule

- Will be released for public comment mid-December through end of January 2026
- PSRC review of comments and development of final plan through April 2026
- Final adoption May 2026



Thank you

Ben Bakkenta, AICP
Director of Regional Planning
bbakkenta@psrc.org



Puget Sound Regional Council