



Ballard Link Extension

BALLARD LINK EXTENSION Q1 2026 QUARTERLY EXTERNAL ENGAGEMENT REPORT

Ballard Link Extension outreach and engagement activities snapshot



Ballard Link booth staffers during Tét at Seattle Center on February 14, 2026.



Community members raise the iconic Chinese dragon during Lunar New Year Celebration on March 7, 2026.

Between January and March 2026, our team...



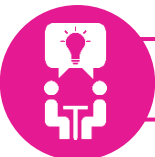
Attended **2 festivals**, engaging **1,650+ community members**.



Sent **1 email update** to **12,000+ subscribers**.



Responded to **28 comments and questions** from inbox and voicemail.



Conducted door-to-door outreach engaging **74 businesses** in CID.



Held **13 briefings** with property owners, tenants, and community organizations.



Continued ongoing **fieldwork activities** throughout the project corridor.



Ballard Link Extension project overview

The [Ballard Link Extension project](#) (BLE) will provide fast, reliable light rail connections to dense residential and job centers in the Chinatown-International District (CID), Downtown, Interbay, and Ballard neighborhoods. In addition, a new downtown Seattle light rail tunnel will provide capacity for the entire regional system to operate efficiently.

Stations include Chinatown-International District, Midtown, Westlake, Denny, South Lake Union, Seattle Center, Smith Cove, Interbay, and Ballard.

Sign up for our email list to get project updates:

soundtransit.org/ballardupdates



Fairs and festivals

We attended and hosted booths at **two events** to share information about the project with the community, engaging with over **1,664** residents.

Events included:

- **Tét at Seattle Center**
 - February 14 and 15, 2026 | Visitors: 1095
- **Lunar New Year Celebration**
 - March 7, 2026 | Visitors: 569



A Ballard Link booth staffer chats with a community member about system expansion at Lunar New Year Celebration on March 7, 2026.



Door-to-door outreach

We conducted **two sessions** of door-to-door outreach with Community Liaisons and in-language support, informing **74 businesses** in the CID of the upcoming Draft Environmental Impact Statement (EIS) public comment period and local fieldwork occurring in the neighborhood.

Sessions included:

- **Chinatown / International District**
 - March 19 and 24, 2026 | Businesses: 74



Ballard Link team members conducting door-to-door outreach to businesses in the Chinatown / International District on March 19, 2026



Email updates

During the reporting period, the project team sent **one email update** to more than **12,000 subscribers**. The message included a “year-in-review” summary of Sound Transit’s BLE engagement efforts in 2025, a look-ahead to 2026, and information about the Enterprise Initiative.

The update also provided an overview of the environmental review process and reminded readers about the upcoming Draft Environmental Impact Statement (EIS) and public comment period. It encouraged subscribers to explore project resources to learn more about progress on the BLE Draft EIS.



Common questions and comments

The following is a summary of questions and comments received through meetings with property owners and tenants, community briefings, emails, and voicemails.

Draft Environmental Impact Statement (EIS), alternatives, and station options

- Questions and comments about the timing, publication, and length of the Draft EIS public comment period, including requests for a longer comment period to support language access and meaningful participation.
- Questions about the level of design and analysis included in the Draft EIS, how newer alternatives compare with previously studied options, and how public feedback will be considered after the Draft EIS is published.
- Questions and comments about tunnel routes, downtown station options, and station consolidation concepts, including implications for system connectivity, rider experience, and cost.
- Questions and concerns about station locations and access, particularly in the CID, Interbay, Seattle Center, and Westlake areas.
- Requests for clearer, more visual materials, including systemwide maps that show both the north and south CID station options.
- Questions about construction sequencing and timing, including when major impacts are expected to begin and when disruption may be most intensive.

Property questions and fieldwork

- Questions and comments about the property acquisition process, including timing, early acquisition, appraisals, treatment of recent investments, and impacts to businesses and employees.
- Questions about how specific properties may be affected, including potential acquisitions or tunnel easements, and the timeline for notifying owners.
- Questions about potential Sound Transit acquisitions and their effects on the surrounding communities.

South Downtown Hub

- Questions and comments related to South Downtown Hub design concepts and pedestrian improvements, including how previous feedback on access and connectivity near King Street Station will be used.

Enterprise Initiative and system affordability

- Questions and concerns about system affordability, cost savings efforts, and the Enterprise Initiative, including how these may change project scope, routes and station options, phasing, and delivery timelines.
- Questions about how the Enterprise Initiative relates to the Draft EIS process.
- Concerns about potential equity impacts in the CID if cost pressures result in changes to project scope or reintroduction of disfavored station concepts.
- Broader questions about whether funding gaps could delay or cancel projects and how project sequencing decisions may affect communities.