

Tacoma Dome Access Improvements

Tacoma Dome Access Improvements

The Tacoma Dome Access Improvements (TDAI) is a Sound Transit 2 (ST2) project that dedicates funding to improve how we get to the Tacoma Dome Station area. This would be accomplished through a surface parking lot with up to 300 stalls,* and/or a flexible approach to improve rider access through pedestrian, bicycle, or other transit-related improvements.

Sound Transit, in coordination with the City of Tacoma, and through previous public engagement, identified potential access improvements including new surface parking options and pedestrian, bicycle, and Americans with Disabilities Act (ADA) enhancements near the Tacoma Dome Station. We expect to complete the chosen TDAI projects in 2032.



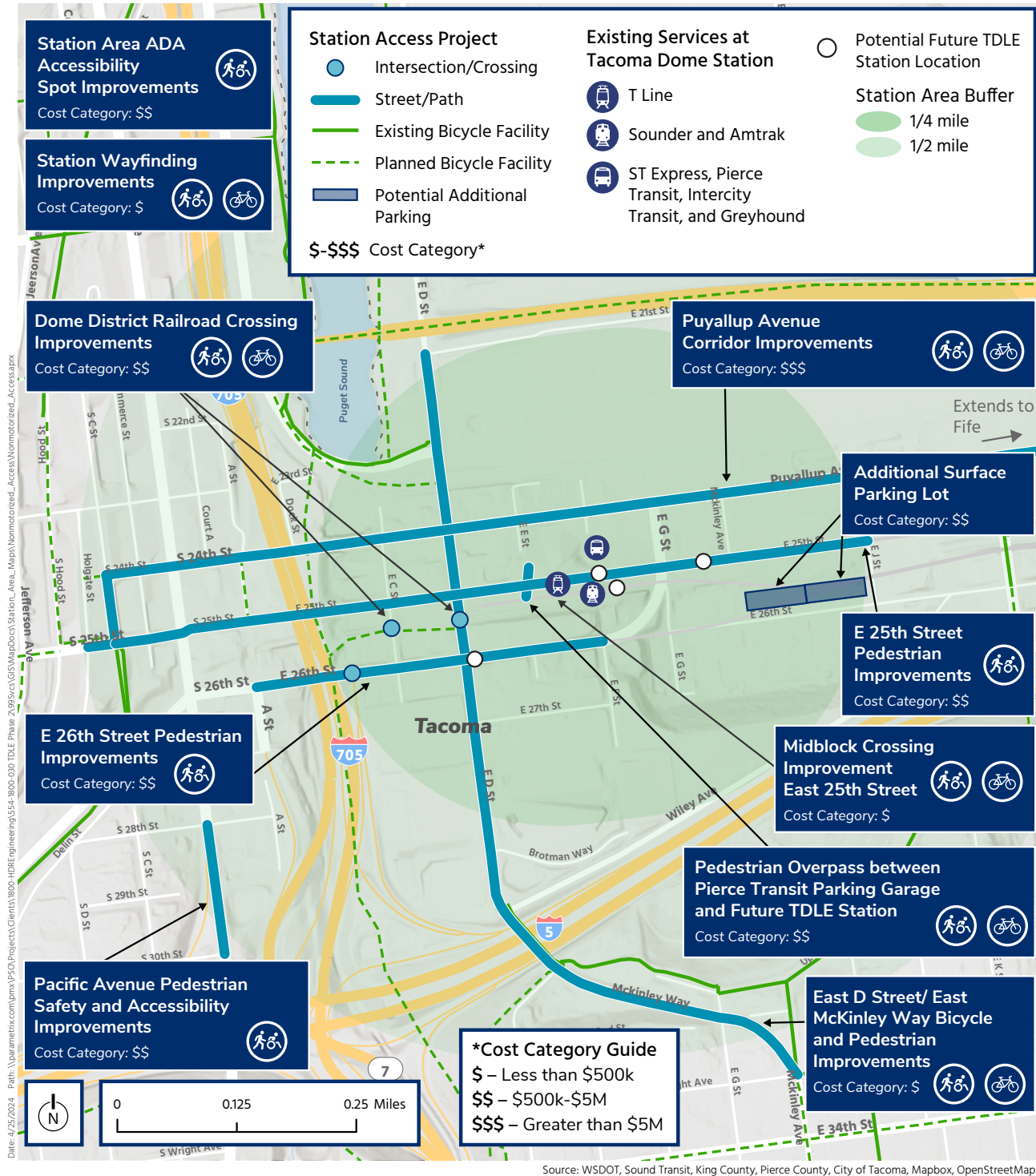
P *Parking at Tacoma Dome Station

There are 2,300 parking spaces in two garages. Additionally, there is free on-street parking and nearby private lots that offer paid daily and monthly parking.

When voters approved ST2, parking demand exceeded capacity, but since 2020, parking capacity has

exceeded demand. Today, the garages are typically about 50% full each weekday. Once light rail is open near the Tacoma Dome, there could be an increase in parking demand that could reduce the number of available parking spaces.

Potential TDAI projects



How should we prioritize the access improvements?

Visit us online to learn more about the potential TDAI projects and share your feedback by Oct. 11!

soundtransit.org/TDAI

Questions? Contact us

Email: tdlink@soundtransit.org

Phone: 206-398-5453

