

# Working Together

City of Seattle + Sound Transit

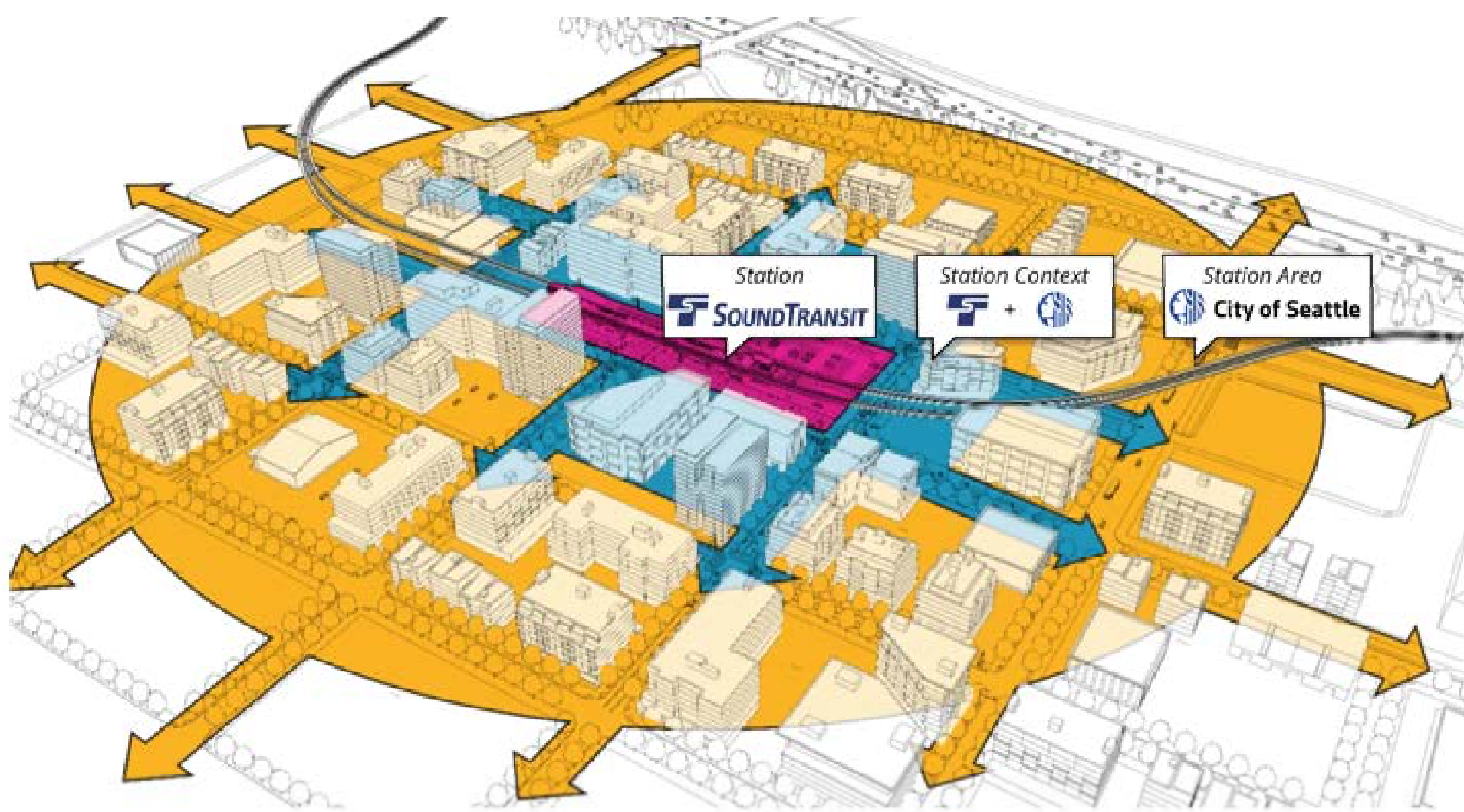
**Our goal is to bring light rail to West Seattle on time and within budget.**

## ***Here's how we're doing it:***

- We're talking with communities and public agencies as we design.
- We're fixing problems early to speed up permits.
- We're laying out project steps clearly.
- We're suggesting changes to make the permitting process smoother for light rail.

## ***Join in!***

1. Share your thoughts on station design.
2. Take our survey.
3. Ask questions!
4. Sign up for future participation.
5. Be part of the process.



**Comments? Contact us:** [lightrail@seattle.gov](mailto:lightrail@seattle.gov)



For more information or to subscribe for updates:  
[www.seattle.gov/lightrail](http://www.seattle.gov/lightrail)



# Bike + Scooter Parking

Estacionamiento de bicicletas y scooters

የብስክሌት + የስኩተር ማቆሚያ | Khu vực đậu xe đạp + xe scooter  
 자전거 + 스쿠터 주차장 | Meel-la-dhigto Baaskiil + Iskuutar  
 自行车+滑板车停车位 | Paradahan ng bisikleta + scooter

5. What would make you more likely to park your bike or scooter at the station? Pick 2

¿Qué haría más probable que estacione su bicicleta o scooter en la estación? Elija 2

ብስክሌትዎን ወይም ስኩተርዎን በጣቢያው ላይ ይበልጥ እንዲያቆሙ የሚያደረግዎ ነገር ምንድን ነው?  
 ስዕል 2

Điều gì sẽ làm cho quý vị có nhiều khả năng đậu xe đạp hoặc xe scooter ở trạm hơn? Chọn 2

어떻게 하면 귀하가 자전거나 스쿠터를 역에 주차할 가능성이 높아집니까? 2개 선택

Maxaa kuu sahli kara inaad baaskiilkaaga ama mooto-iskuutarka dhigato saldhigga?  
 Dooro 2

什么原因会让您更有可能将自行车或滑板车停放在车站？ 选2项

Ano ang magiging dahilan kung bakit mas malamang na iparada ninyo ang inyong  
 bisikleta o scooter sa istasyon? Pumili ng 2



MORE SECURE FACILITIES (LOCKED DOOR, SECURITY GUARDS, ETC)

75%



LOCATE PARKING NEAR THE STATION ENTRANCE

7%



LOCATE PARKING CLOSE TO MY ROUTE

2%



PROVIDE A PLACE TO CHARGE MY BIKE OR SCOOTER BATTERY

2%



SPACE LARGE ENOUGH FOR MY CARGO BIKE OR CHILD SEAT/TRAILER

5%



OTHER

11%



# Bike + Scooter Parking

Estacionamiento de bicicletas y scooters

የብስክሌት + የስኩተር ማቆሚያ | Khu vực đậu xe đạp + xe scooter

자전거 + 스쿠터 주차장 | Meel-la-dhigto Baaskiil + Iskuutar

自行车+滑板车停车位 | Paradahan ng bisikleta + scooter

6. What type of bike or scooter parking would you prefer? Pick 1

¿Qué tipo de estacionamiento para bicicletas o scooters prefieres? Elija 1

ምን ዓይነት የብስክሌት ወይም የስኩተር ማቆሚያ ቦታን ይመርጣሉ? ስዕል 1

Quý vị thích nơi đậu xe đạp hoặc xe scooter nào hơn? Chọn 1

어떤 종류의 자전거 또는 스쿠터 주차장을 선호하십니까? 1개 선택

Waa maxay nooca meel la dhigo baaskiilka ama mootada ee aad doorbidayso? Dooro 1

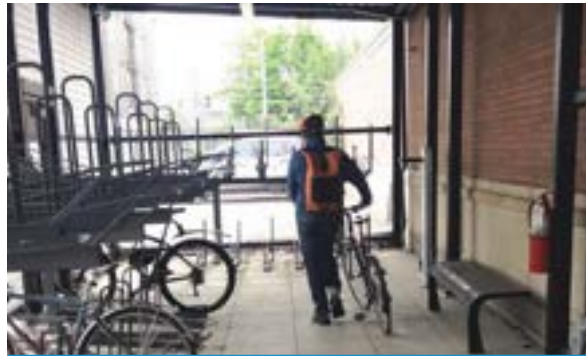
您更倾向于哪种类型的自行车或滑板车停车设施? 选1项

Anong uri ng paradahan ng bisikleta o scooter ang gusto ninyo? Pumili ng 1



LOCKER

44%



SECURE ROOM

32%



RACKS

25%

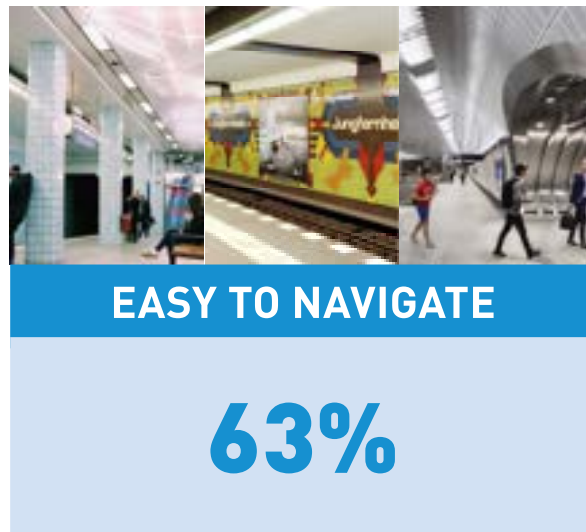


# Station Design

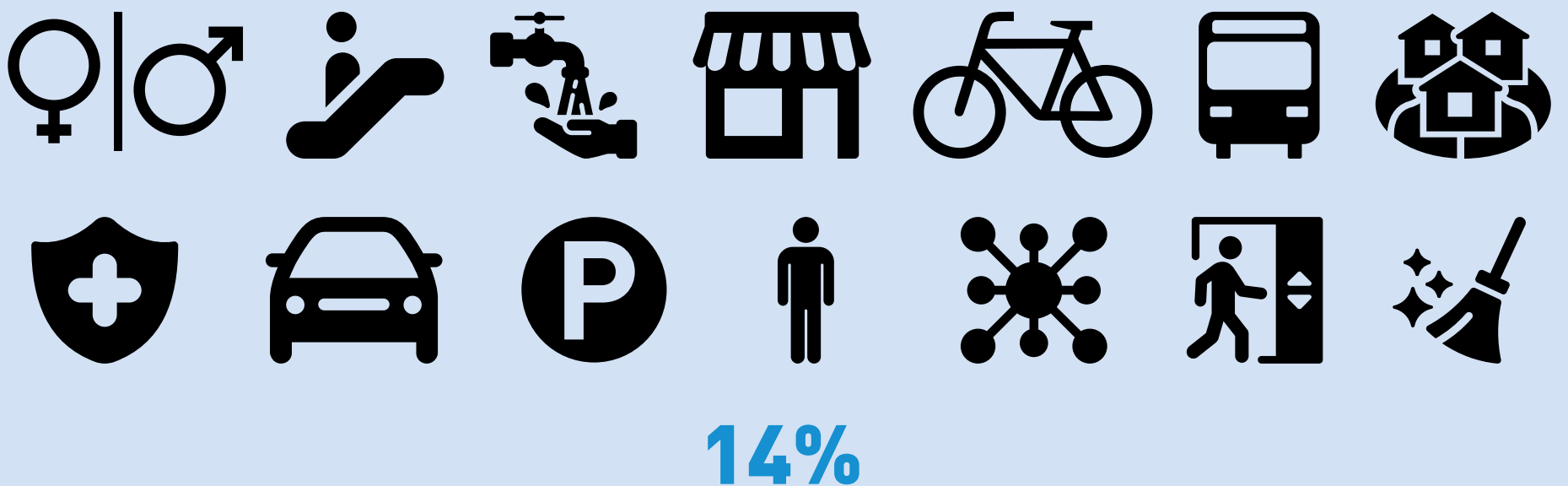
Diseño de la estación | ጣቢያ ንድፍ  
Thiết Kế Trạm | 역 설계 | 车站设计  
Naqshadaynta Saldhigga | Disenyo ng Istasyon

## 1. What is most important to station design? Pick 3

*Note that these responses are based on the online survey, not the in-person open house.*



YOUR IDEAS! | SUS IDEAS | የእርስዎ ሀሳብ | Ý TƯỞNG CỦA QUÝ VỊ | 귀하의 의견 |  
FIKRADAHAAGA | 您的想法 | INYONG MGA IDEYA



# Station Design

Diseño de la estación | ጣቢያ ንድፍ  
Thiết Kế Trạm | 역 설계 | 车站设计  
Naqshadaynta Saldhigga | Disenyo ng Istasyon

2. When you visited other rail stations, what did you like? What could be improved?

Quando visitó otras estaciones de tren, ¿qué le gustó? ¿Qué se podría mejorar?

ሌሎች የባቡር ጣቢያዎችን በሚጎበኙበት ወቅት፣ ምን የወደዱት ነገር ነበር? ምን ሊሻሻል ይችላል?

Khi quý vị ghé đến các trạm đường sắt nhẹ khác, quý vị thích điều gì? Điều gì nên được cải thiện?

다른 경전철역을 방문하셨을 때 어떤 점이 마음에 드셨나요? 어떤 부분이 개선될 수 있을까요?

Markaad booqatay saldhigyada tareenada kale, maxaad ka jeclaatay? Maxaa la hormarin karaa?

当您访问其他车站时，您喜欢什么？有什么可以改进的地方？

Noong bumisita kayo sa ibang mga istasyon ng tren, ano ang nagustuhan ninyo? Ano ang maaaring mapabuti?

I would like ST to start incorporating small business such as coffee shops 7/11 in the station design

Shelter from weather

Good storm water drainage

Integrate bus into station design

Prioritize escalator bus access during construction

Should be quick to get from street level to platform

Security! Guards lots of cameras that are monitored in real time

Clean and safe

Multiple street access points

Safe pedestrian access to station entrance (protected crosswalks from both sides)

Prioritize and upkeep accessibility features

Clean elevators

Multiple street access points

High quality pedestrian access- small streets, many access points, greenery

Better lighting



# Station Design

Diseño de la estación | ጣቢያ ንድፍ  
Thiết Kế Trạm | 역 설계 | 车站设计  
Naqshadaynta Saldhigga | Disenyo ng Istasyon

3. What aspects of your neighborhood character should be reflected in the design?

¿Qué aspectos del carácter de su vecindario deben reflejarse en el diseño?

የትኞቹ የመኖሪያ አካባቢዎ መገለጫ ባህሪያት ሩቅው በዚህ ንድፍ ላይ መገለጻቸው ያለባቸው?

Những khía cạnh nào trong nét đặc trưng khu phố của quý vị nên được phản ánh trong thiết kế?

동네 특성 중 어떤 면이 설계에 반영되어야 할까요?

Waa maxay dhinacyada dabeecadda xaafaddaada ay tahay inay ka muuqato naqshadda?

设计中应该体现您社区特色的哪些方面?

Anong mga aspeto ng karakter ng inyong kapitbahayan ang dapat ipakita sa disenyo?

Makers, gardeners, etc.

Develop community commitment

Neighborhood gathering spots  
De(ridge) wetland/tribal land

Musicians

Diversity + inclusion

Bring into station community/land history

Alaska Junction - business vitality

Native American Culture (De(ridge))

Scenery theme

4. What is your vision for the area around the station?

¿Cuál es su visión para el área alrededor de la estación?

በጣቢያው ዙሪያ ያለ አካባቢን በተመለከተ የእርስዎ ራእይ ምንድን ነው?

Tầm nhìn của quý vị đối với khu vực xung quanh trạm là gì?

역 주변 지역에 대한 귀하의 비전은 무엇인가요?

Waa maxay hiigsigaaga ku aaddan aagga saldhigga ku wareegsan?

您对车站周边地区的愿景是什么?

Ano ang inyong pananaw para sa lugar sa paligid ng istasyon?

Locally owned one-stop shop

Community ownership (local biz, public spaces, etc.)

Alki, local forest parks, views of Olympic Mountains

Community hubs, cafes, childcare, health resource centers

Connect to community hub (local shops/no big chains) also able to transfer to other areas easily find that info. Alki beach, local parks, local attractions

Skip Avalon (maintain bus)

Covered meeting area

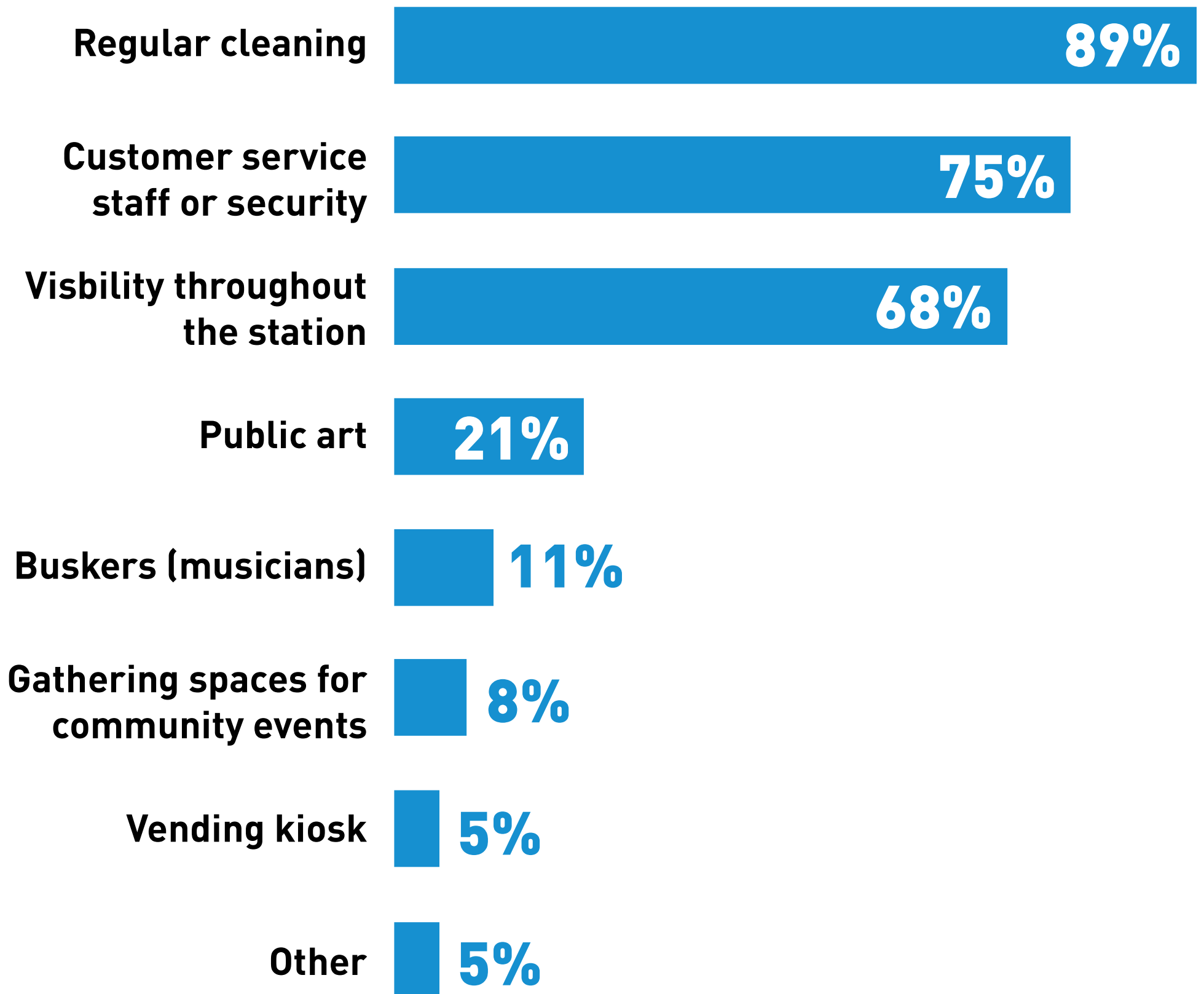
Areas + features for kids!!



# Station Design

Diseño de la estación | 站的设计  
Thiết Kế Trạm | 역 설계 | 车站设计  
Naqshadaynta Saldhigga | Disenyo ng Istasyon

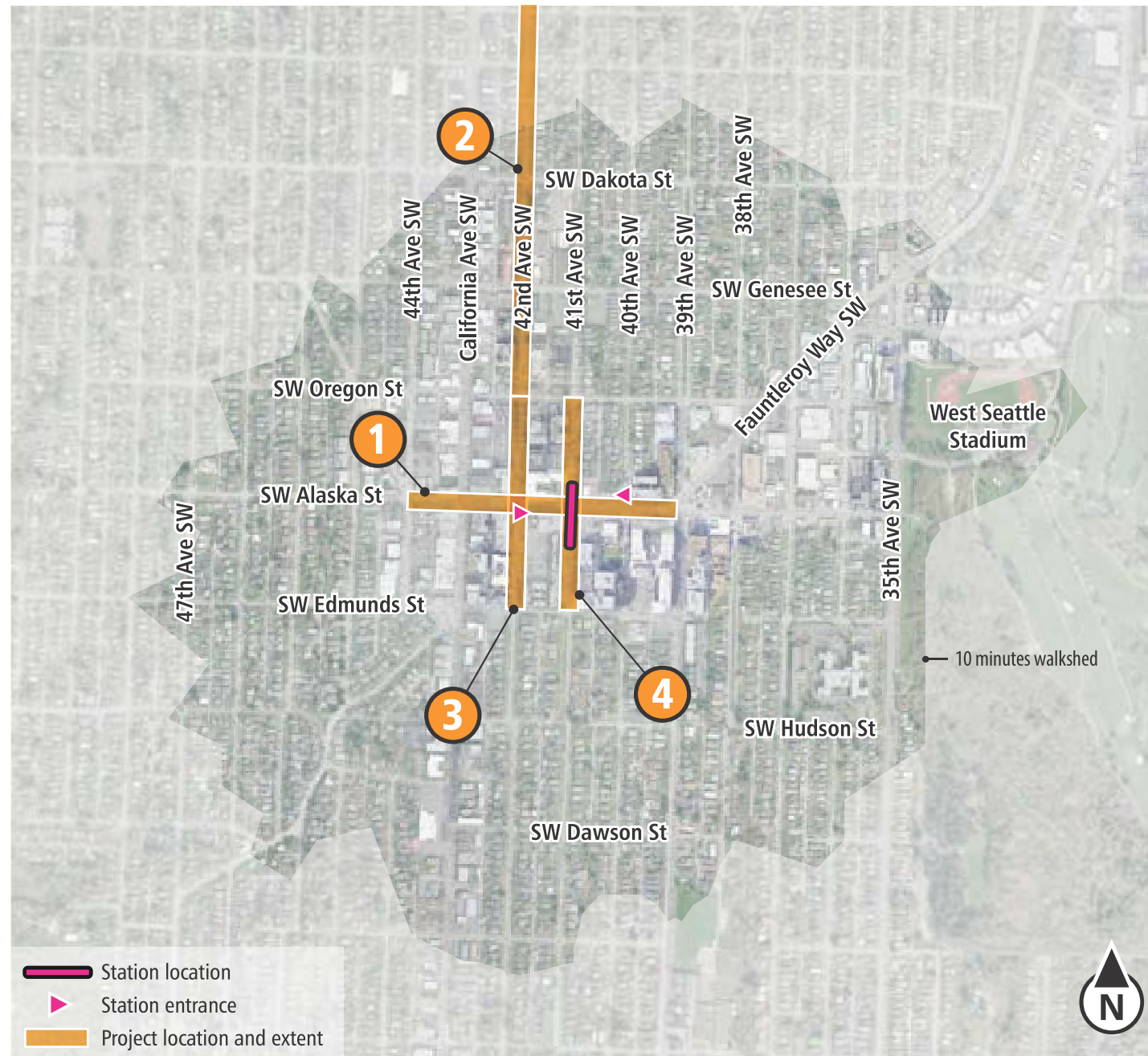
1. You indicated it was important that stations feel safe and vibrant.  
What types of features would make the station feel safe and vibrant?  
Pick 3





# Does this project make it easier for you to get to and from the station?

## Alaska Junction Station



We asked which projects would make it easier for people to access the station. Based on feedback in fall 2023, this list reflects where people agree or strongly agree that a project would improve their access.

As a next step, the City of Seattle, in coordination with Sound Transit, will use this feedback from the community along with other established criteria to inform additional planning and design.

### Potential access projects

- 1 SW Alaska St between 44th Ave SW and SW Fauntleroy Way
- 2 42nd Ave SW between SW Hanford St and SW Oregon St
- 3 42nd Ave SW between SW Oregon St and SW Edmunds St
- 4 41st Ave SW between SW Oregon St and SW Edmunds St

Level of support

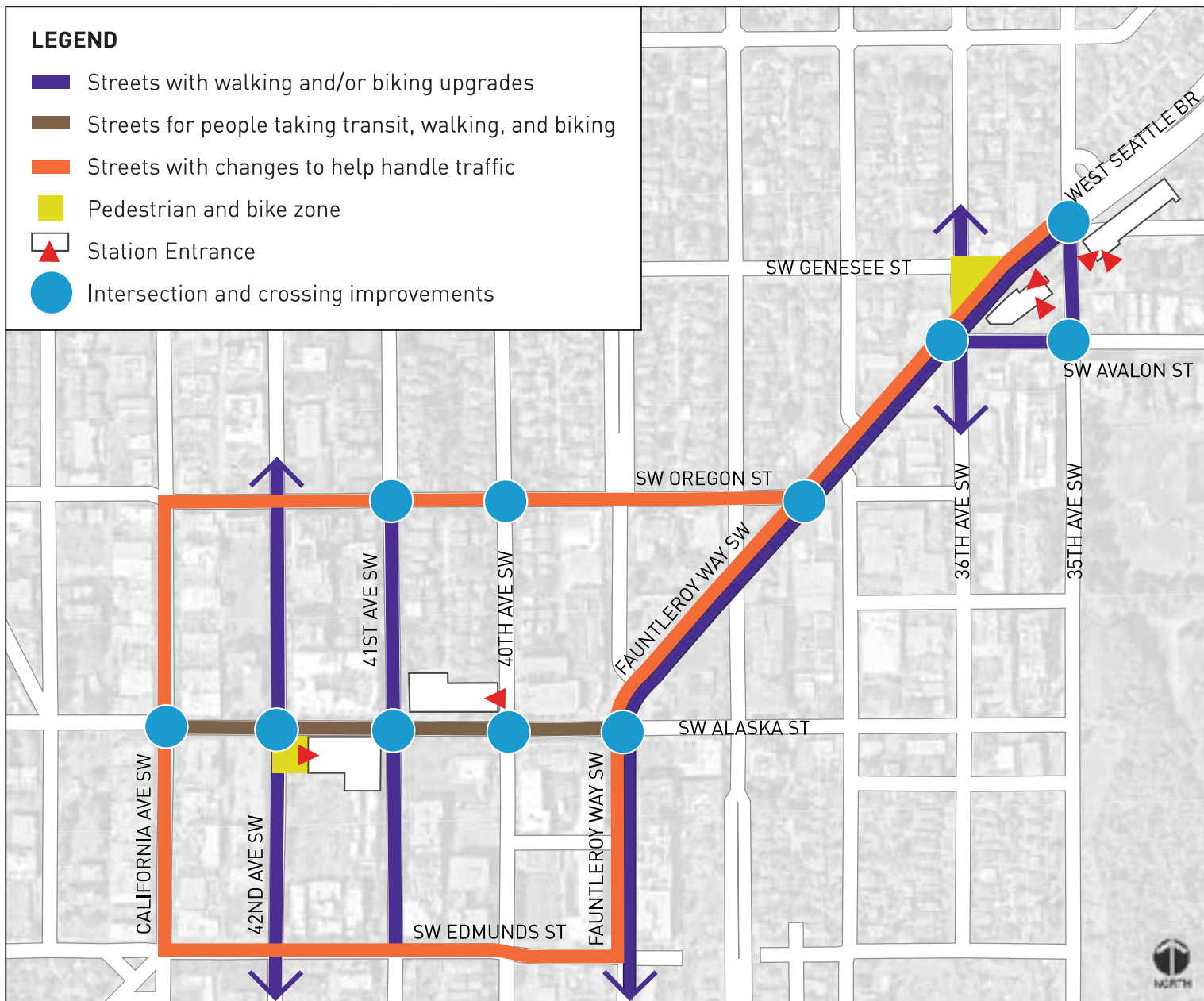
Results from Fall 2023  
station planning engagement



# Overview of Alaska Junction and Avalon Stations

**Goal:** We want to make it easier for you to use light rail, connect between buses and trains smoothly, and ensure safer paths for walking and biking to the station.

## Potential Alaska Junction and Avalon Station Projects



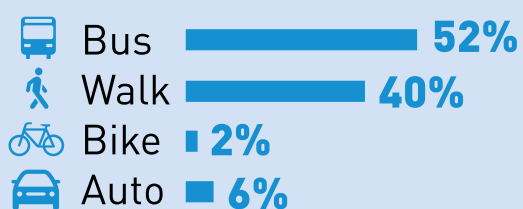
\*See Seattle Transportation Plan element maps for full element networks

### Alaska Junction Station

Ridership/Daily Boardings

**6,400**

How people will travel to the station

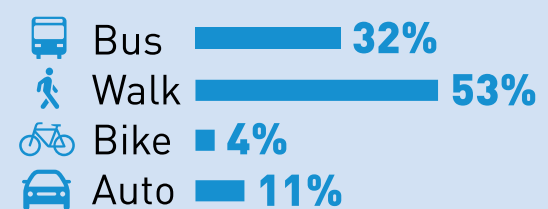


### Avalon Station

Ridership/Daily Boardings

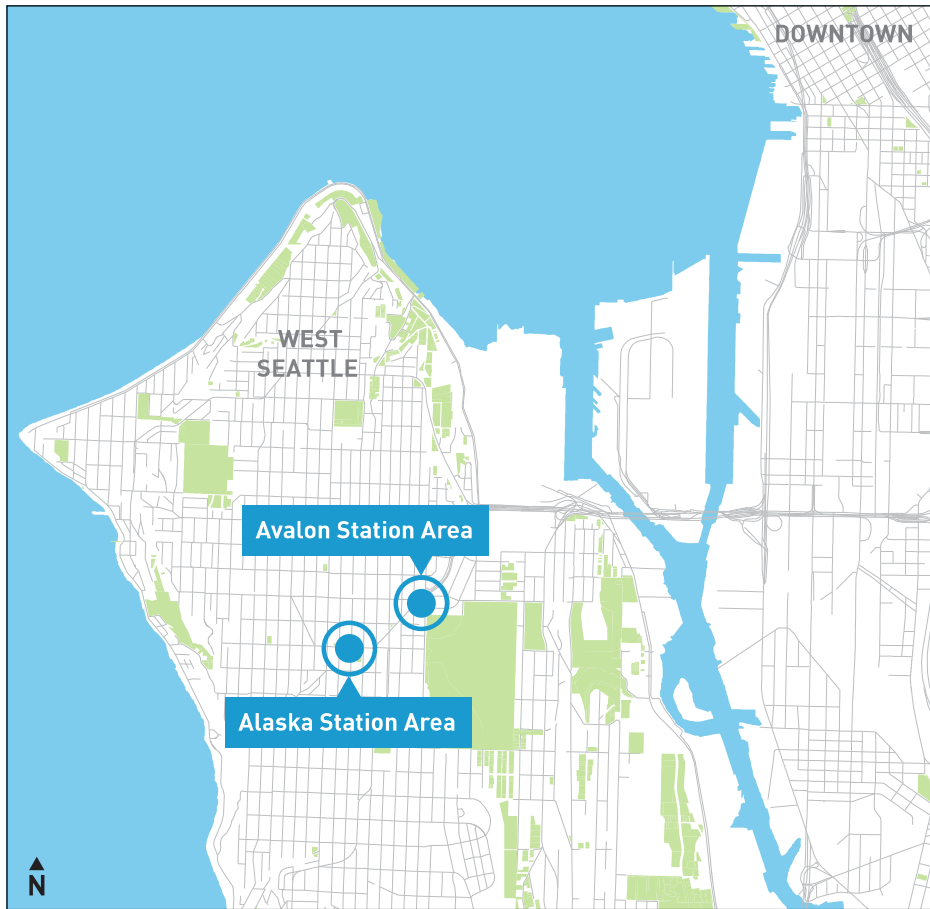
**1,200**

How people will travel to the station



# Alaska Junction and Avalon Station – What We Heard From You

## Context Map



## Alaska Junction Station

### You asked us to focus on these goals:

- Making bus stops wider with seats, lights, and shelter
- Adding trees between where people walk or bike and where people drive
- Creating an open area for events and community gatherings
- Creating a plaza by closing 42nd Ave SW station entrance to cars but allowing emergency vehicles or food trucks. (This was a top request!)

## Avalon Station

### You asked us to focus on these goals:

- Simplifying intersections on Fauntleroy Way for safety
- Adding trees between where people walk or bike and where people drive
- Making crossing easier on the neighborhood greenway
- Providing structures for shade or rain protection

## Top priorities for the pedestrian plaza at 42nd Ave SW, as identified during fall 2023 engagement



1. Open plaza space for community gatherings, cultural festivals, food trucks, or farmer's market



2. Landscaping, like shade trees or native shrubs



3. Structures that provide shade or weather protection

4. Bicycle racks or places to park shared mobility devices like scooters
5. Tables and chairs, or benches
6. Public art
7. Decorative lighting
8. Places and features for young children to play on
9. Other - Write In



# Alaska Junction Street Design

## Draft concept design for SW Alaska St (March 2024)



## Potential street design



### LEGEND

- ① Potential Bus Only lanes
- ② Bus Shelters
- ③ Station Entrances
- ④ Raised Intersections
- ⑤ Raised Crossings
- ⑥ Benches and Bike Racks
- ⑦ Pedestrian Plaza
- ⑧ Raised Bike Lanes
- ⑨ Westbound Access for All Traffic (42nd Ave to California Ave)

Place a green dot to the right if you're excited about this design!

Are there design elements that you're concerned about or that we're missing? If so, leave a comment!

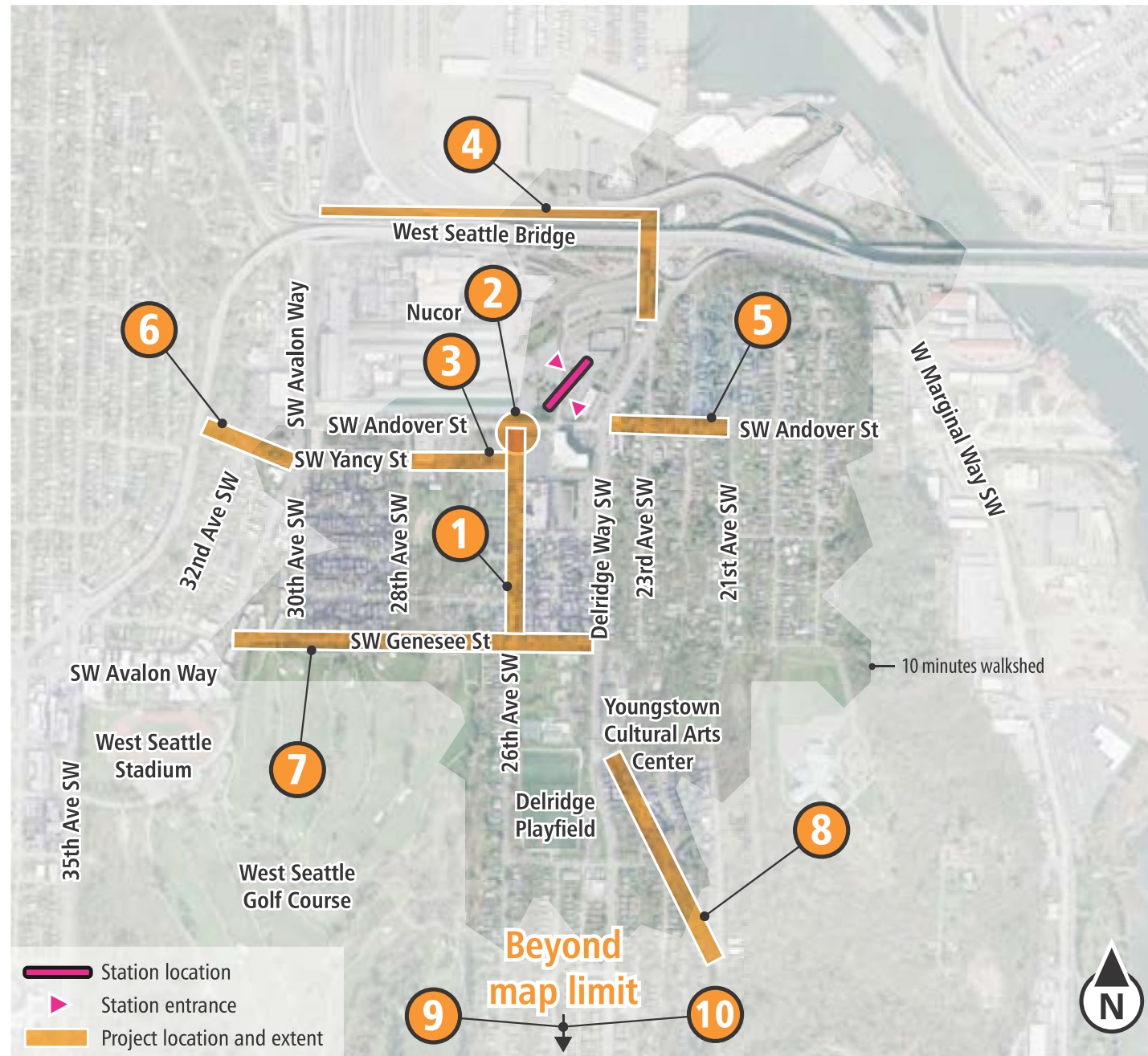
Comments? Please leave your thoughts on a sticky-note!





# Which projects make it easier for you to get to and from the station?

## Delridge Station



We asked which projects would make it easier for people to access the station. Based on feedback in fall 2023, this list reflects where people agree or strongly agree that a project would improve their access.

As a next step, the City of Seattle, in coordination with Sound Transit, will use this feedback from the community along with other established criteria to inform additional planning and design.

### Potential access projects

- 1 26th Ave SW between SW Genessee St and SW Andover St
- 2 Intersection of SW Andover St and 26th Ave SW
- 3 SW Yancy St between 28th Ave SW and 26th Ave SW
- 4 23rd Ave SW Trail Crossing and Alki Trail
- 5 SW Andover St between Delridge Way SW and 21st Ave SW
- 6 SW Andover St between SW Avalon St and West Seattle Bridge
- 7 SW Genessee St between SW Avalon St and Delridge Way SW
- 8 23rd Ave SW/22nd Ave SW between Oregon and 21st Ave SW
- 9 SW Brandon St between 23rd Ave SW and 30th Ave SW
- 10 SW Graham St with stairway and pedestrian connections between Delridge Way SW and High Point

Level of support

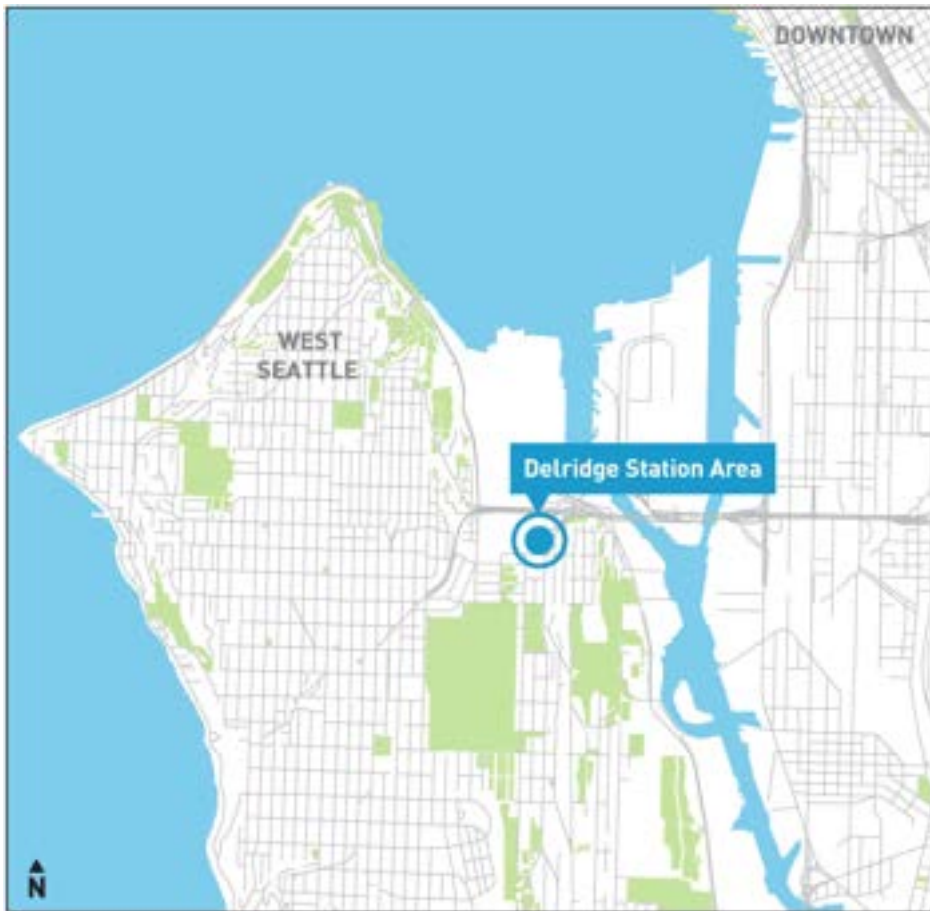
Results from Fall 2023  
station planning engagement



# Delridge Street Design

**Goal:** We want to make it easier for you to use light rail, connect between buses and trains smoothly, and ensure safer paths for walking and biking to the station.

## Context Map



## You've asked us to focus on these goals:

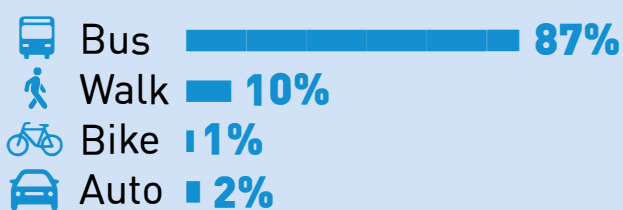
- Create a safer connection for people walking at SW Andover St and 26th Ave SW with either a raised intersection or a curbless design
- Make it safer for people walking and biking by reducing traffic on 26th Ave SW
- Add greenery like trees and shrubs

## Delridge Station

Ridership/Daily Boardings

**5,800** 

### How people will travel to the station





# Delridge Street Design

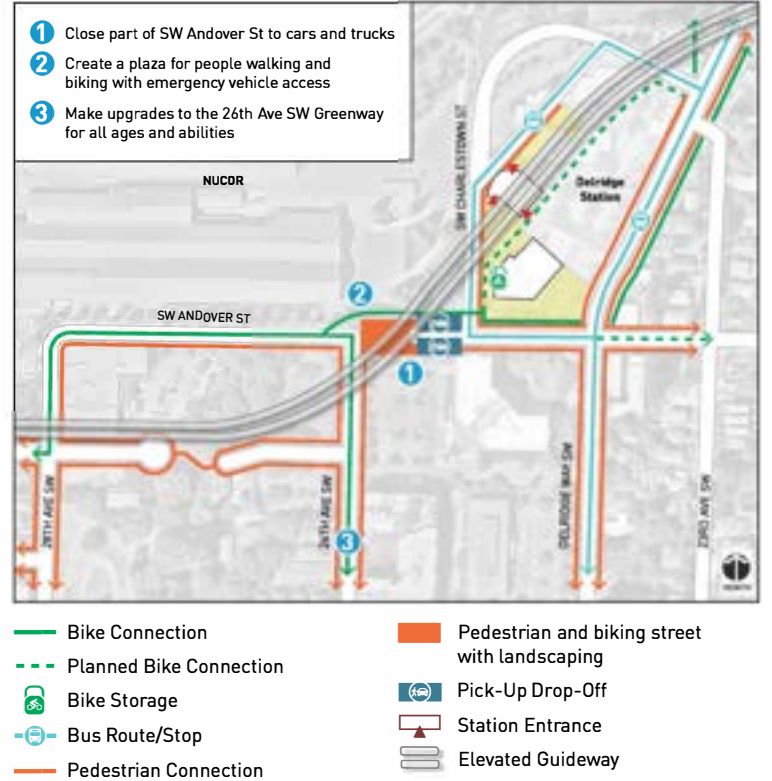
## Draft Concept Designs for Delridge Station (March 2024)

### OPTION 1

Which features do you like?

Which features would you like more of?

What features do you think are missing?

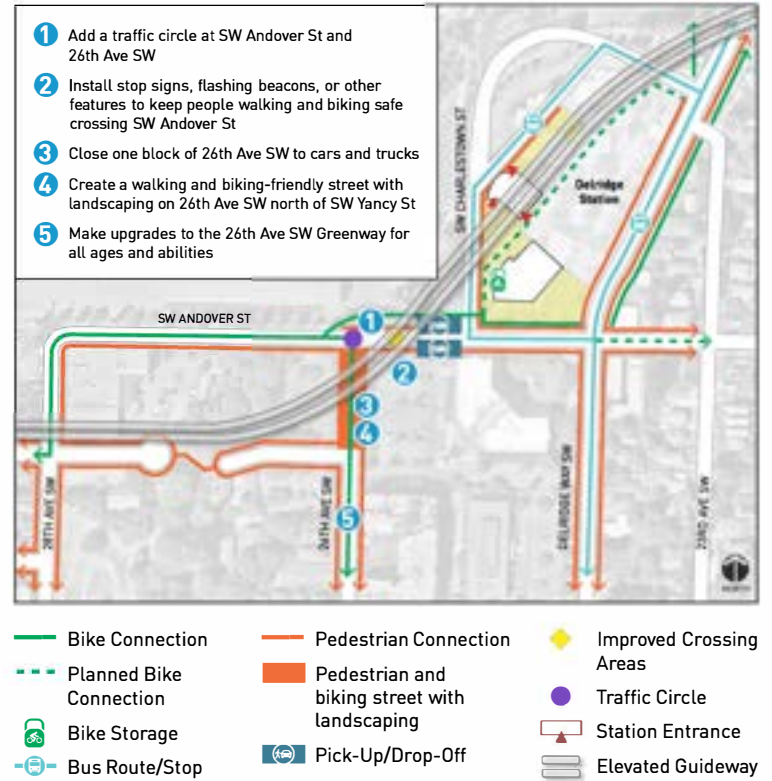


### OPTION 2

Which features do you like?

Which features would you like more of?

What features do you think are missing?

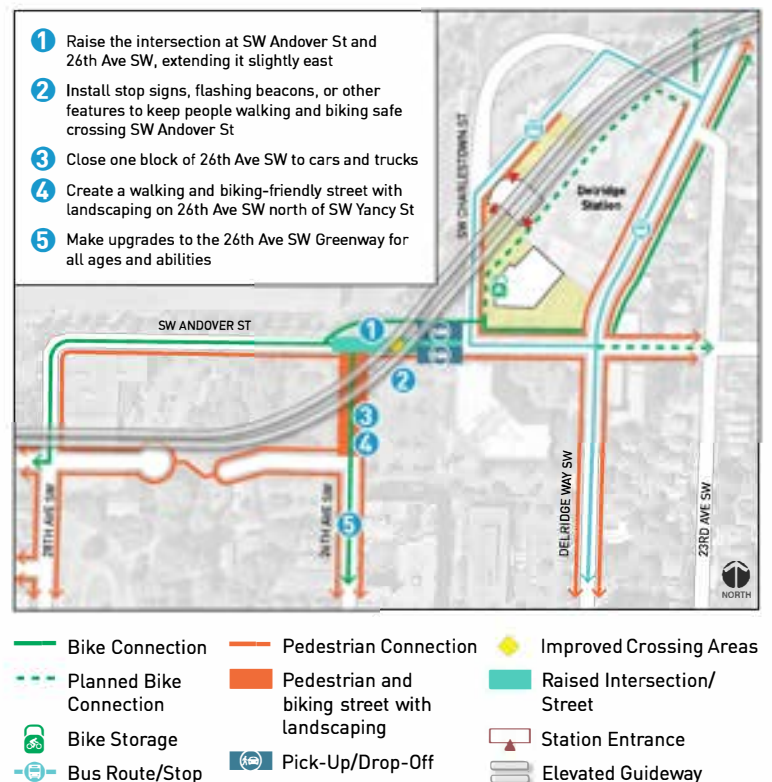


### OPTION 3

Which features do you like?

Which features would you like more of?

What features do you think are missing?



# Does this project make it easier for you to get to and from the station?

## SODO Station



We asked which projects would make it easier for people to access the station. Based on feedback in fall 2023, this list reflects where people agree or strongly agree that a project would improve their access.

As a next step, the City of Seattle, in coordination with Sound Transit, will use this feedback from the community along with other established criteria to inform additional planning and design.

### Potential access projects

- 1 S Lander St between 6th Ave S and Airport Way S

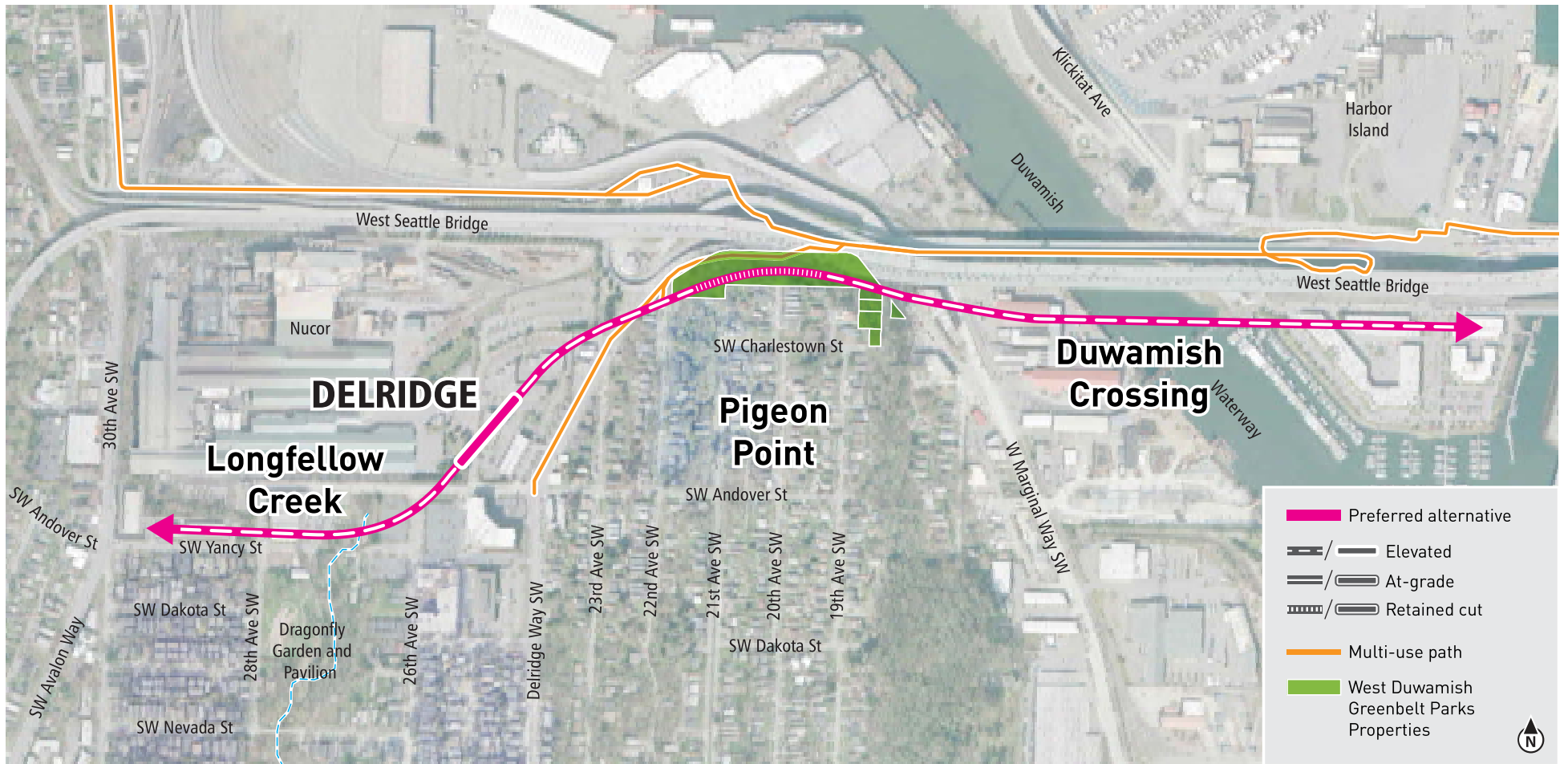
In addition, there is general interest on improvements for bike and pedestrian connections in the SODO neighborhood.

*Results from Fall 2023 station planning engagement.*



# Preferred FEIS Alignment

Longfellow Creek, Pigeon Point, and Duwamish Crossing



Graphics are approximate representation and for illustrative purposes only.

## The City of Seattle will issue permits for the West Seattle Link Extension

We're considering site conditions early to help design the project. During permitting, we'll apply local rules to lessen any impacts we find.

### Longfellow Creek

Features informing design:

- Salmon bearing creek
- Riparian corridor
- Flood plain
- Contaminated soil

### Pigeon Point

Features informing design:

- Public parkland
- Steep slope
- Wetland
- Public trails
- Trees
- Heron

### Duwamish Crossing

Features informing design:

- Supports are close to the ordinary high-water mark.
- Regulated by Shoreline Substantial Development Permit





# Opportunities for Future Engagement

How your comments help the City of Seattle and Sound Transit make plans:

	SPRING 2024		SUMMER 2024	IN THE FUTURE		
<b>City of Seattle</b>	City of Seattle will share early ideas for Light Rail Transit Facilities.	Seattle Design Commission will review West Seattle Stations and paths first.	City of Seattle will suggest changes to the Municipal Code to support future construction.	Seattle City Council will approve the project and the proposed code changes.	Permitting starts	Seattle Design Commission* meetings about Stations and Paths.

\*The Seattle Design Commission gives advice on how things look and fit in our city.

ADD: QR Code to sign up for future opportunities

