

***Stride***

***Bus Rapid Transit Program***

*Citizens Oversight Panel*

*12/16/2020*



# Today's Presentation

## *What we'll cover today:*

- What is BRT?
- Project Overview
- Project Progress and Refinements
- Phase 3 work
- Next steps and questions

***What is Stride BRT?***

# *Bus Rapid Transit – New Line of Service*

*Sound Transit welcomes **STRIDE***



**Station Design Concept**

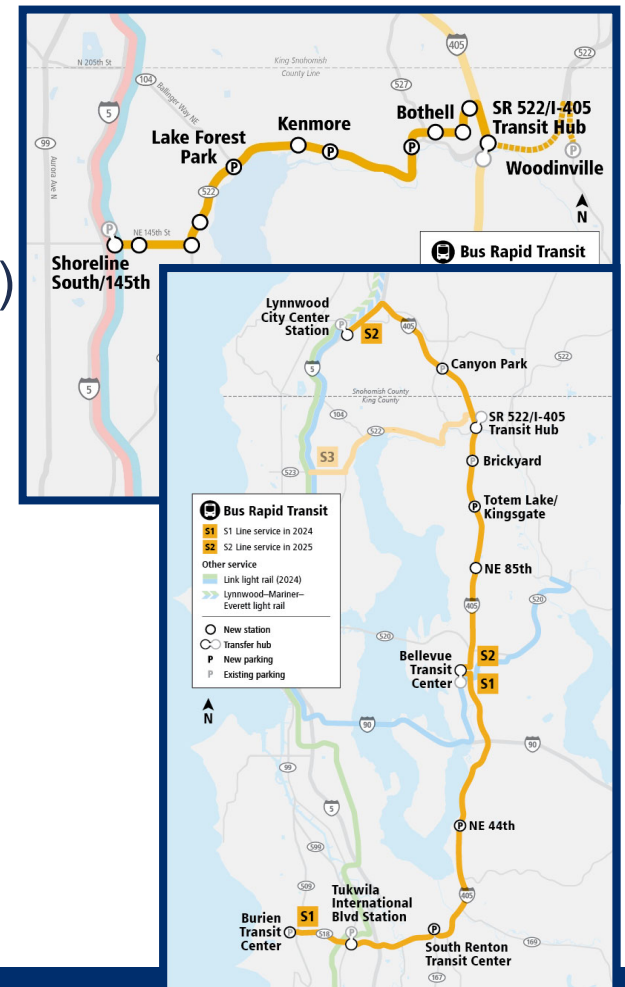
# A New Line of Business

## Bus Rapid Transit

- Two Corridors (I-405 and SR 522/NE 145th)

## BRT Systems Elements of Success

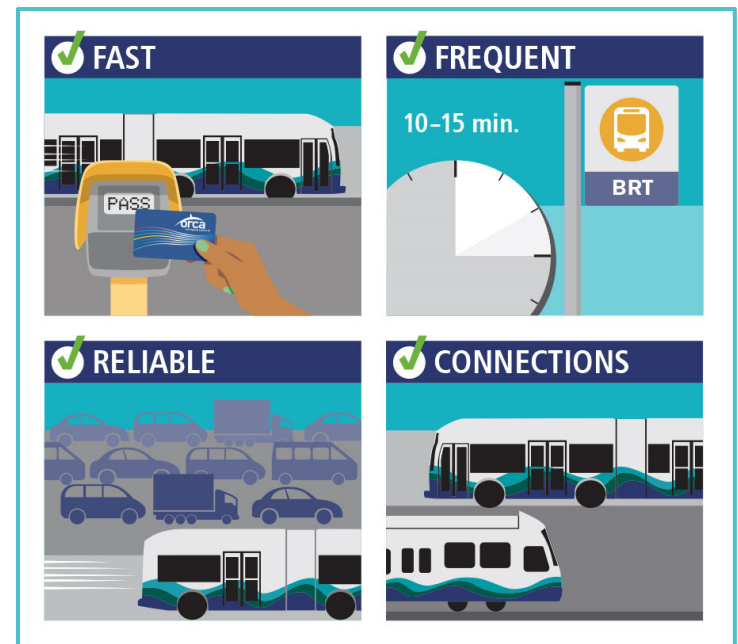
- Transit speed, reliability and access improvements
- BRT stations (signage, shelter, amenities)
- Bus OMF and New BRT fleet
- Branding
- Rider information system



# *Fast, frequent, reliable service*

## *I-405 BRT infrastructure designed for fast, frequent and reliable service*

- 10-minute peak, 15-minute off-peak headways for I-405 BRT
- Up to 19 hours of service Monday through Saturday
- Up to 17 hours on Sunday



# Connecting the region

## LINK connections

### I-405 BRT

Redmond-Seattle-Lynnwood  
*Lynnwood City Center & Bellevue Downtown*

Issaquah-Bellevue-South Kirkland  
*Bellevue Downtown*

Everett-Seattle-West Seattle  
*Lynnwood City Center*

Ballard-Tacoma  
*Tukwila International Boulevard Station*

### SR 522 BRT

Redmond-Seattle-Lynnwood  
*Shoreline South/145th*

Everett-Seattle-West Seattle  
*Shoreline South/145th*



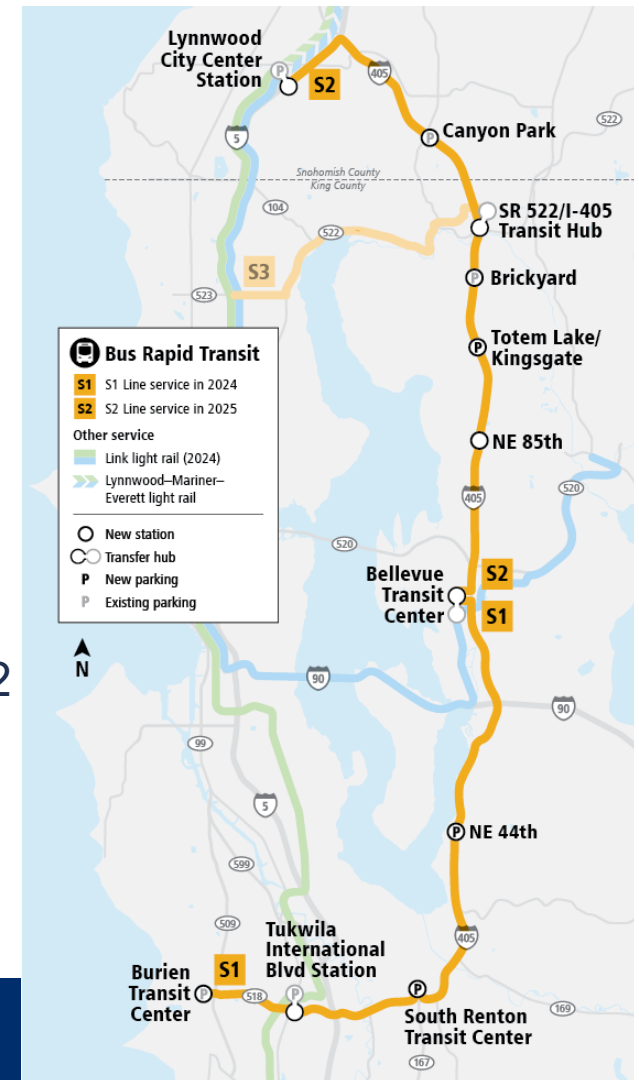
# ***I-405 BRT Project***



# I-405 BRT Project

## Project Overview: Lynnwood to Burien

- 37-mile corridor
- 11 BRT stations across 8 cities
- Three new/expanded parking facilities
- One transit center
- Connections to Link light rail in Lynnwood, Bellevue and Tukwila
- Estimated 19,100 – 26,000 riders daily by 2042
- Two distinct lines:
  - South, Burien to Bellevue (S1)
  - North, Bellevue to Lynnwood (S2)

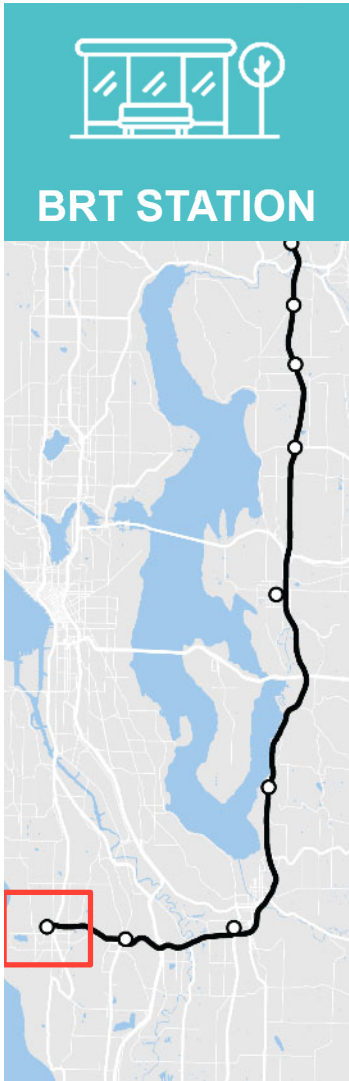


# Stride South Line: S1

## Changes from Phase 1:

- Flip concept at NE 44th
- Development of SRTC design concept
- Refinement of TIBS design





## *Burien Transit Center*

- Will be located at the existing Burien Transit Center.
- Riders will be able to connect to King County Metro bus services.



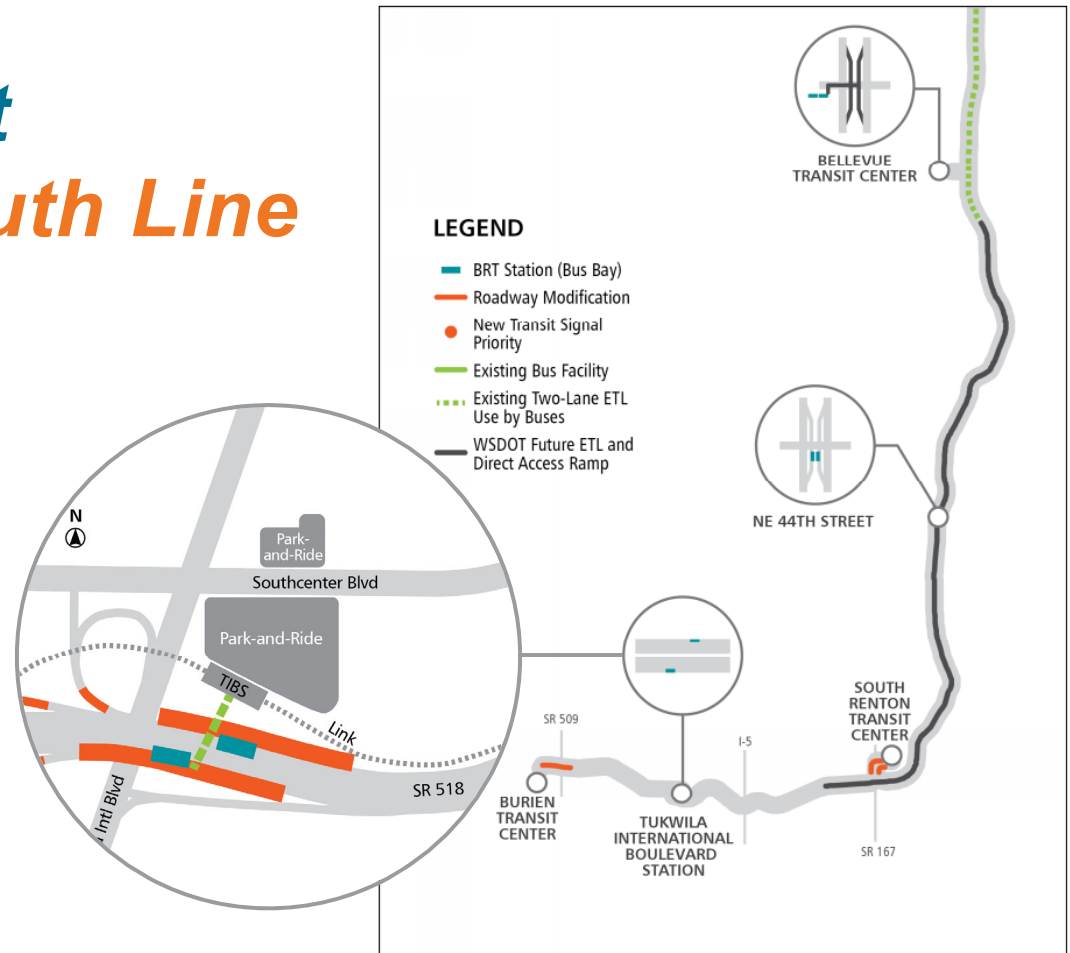
# Proposed Project Refinements: *South Line*

## ■ *Tukwila International Boulevard BRT Station:*

Non-motorized access and improvements to Link Lightrail station

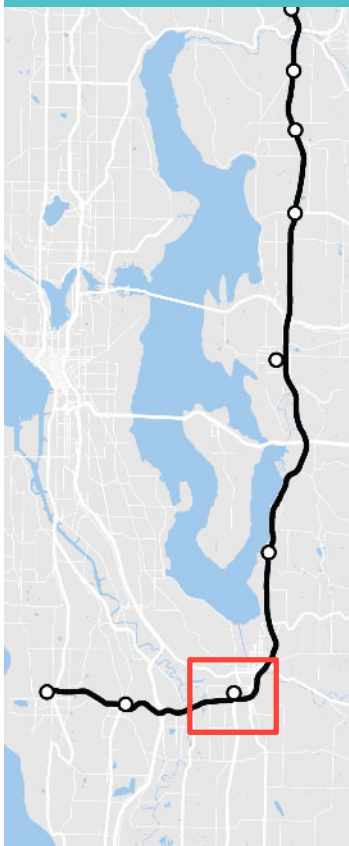
Reduced highway and arterial widening

Improved travel time and ridership



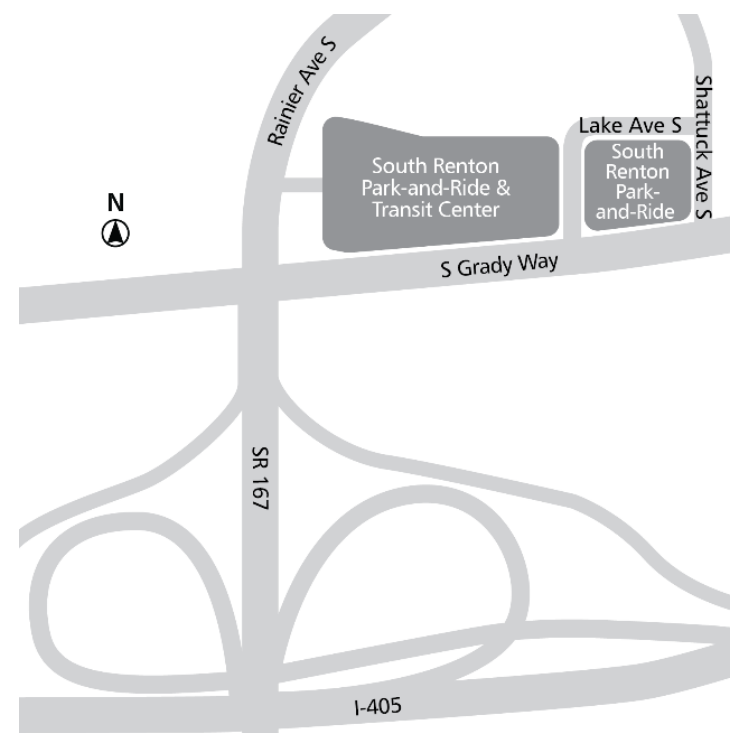


BRT STATION



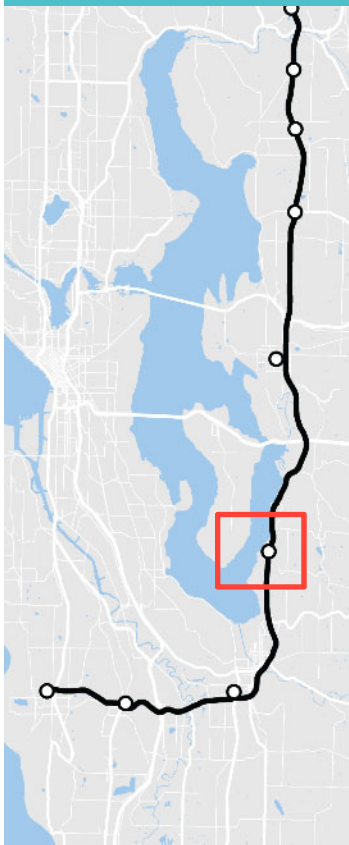
## South Renton Transit Center

- Will include a new transit center for local and regional transit services.
- Includes a new 700-stall parking garage, pick-up and drop-off areas, the BRT station, and an area for future transit-oriented development.





## BRT STATION



# NE 44th Street (Renton)

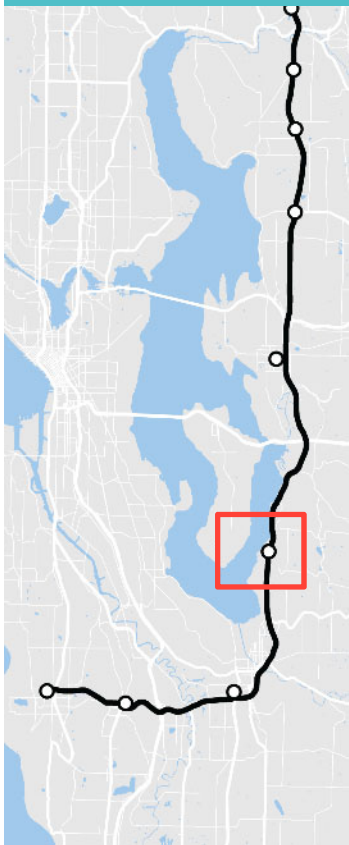
- Will include an inline BRT station at the I-405/NE 44th Street interchange.
- Includes a new park-and-ride facility with up to 200 stalls.
- WSDOT will extend the express toll lanes between Bellevue and Renton and will build direct access ramps for BRT stations.





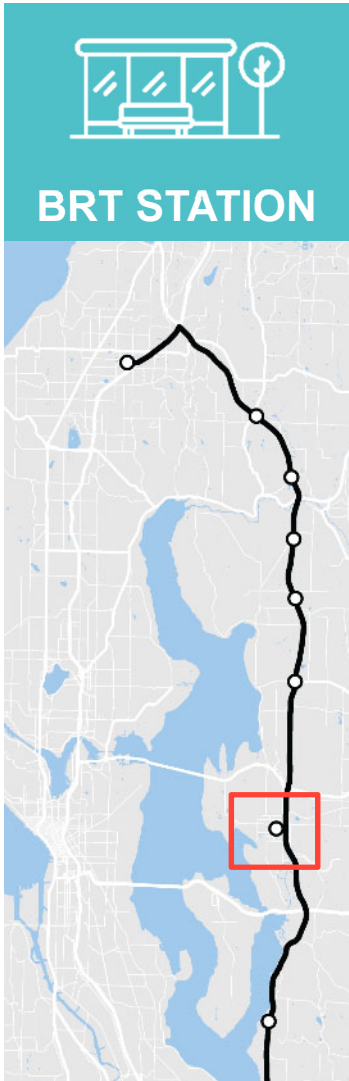


**BRT STATION**



## *NE 44th Street (Renton)*





## *Bellevue Transit Center*

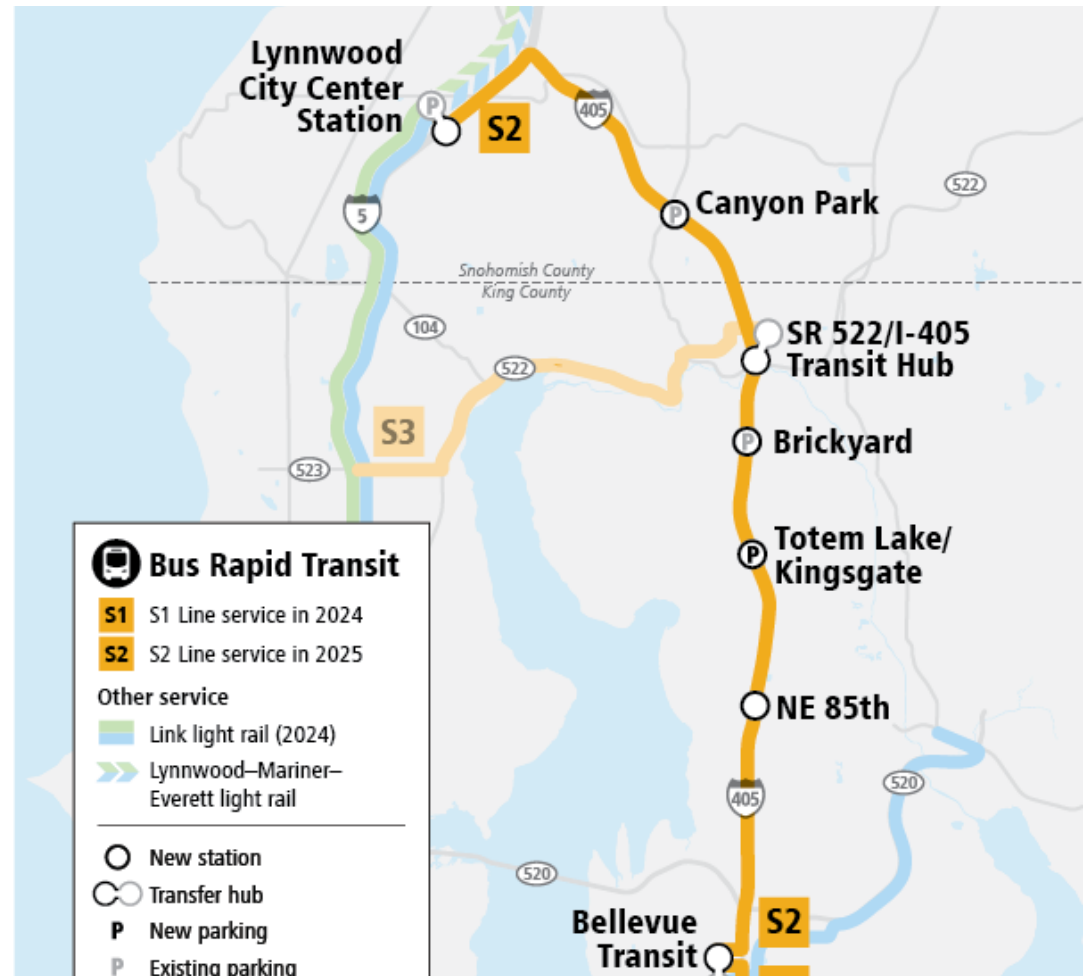
- BRT station will be located at the Bellevue Transit Center.
- Riders will be able to transfer between north and south BRT lines and future Bellevue Link light rail.
- East Link Extension service anticipated to begin in 2023.





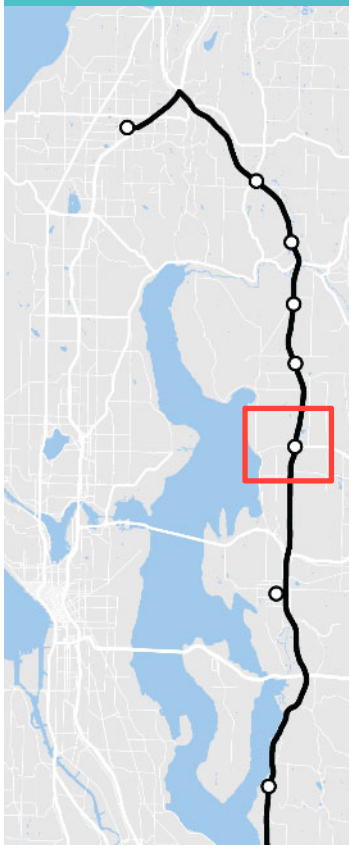
# Stride North Line: S2 Changes from Phase 1:

- In north end WSDOT ETLs
- Canyon Park, Transit Hub, and Brickyard inline
- S3 transfer: UW Bothell/ Cascadia College



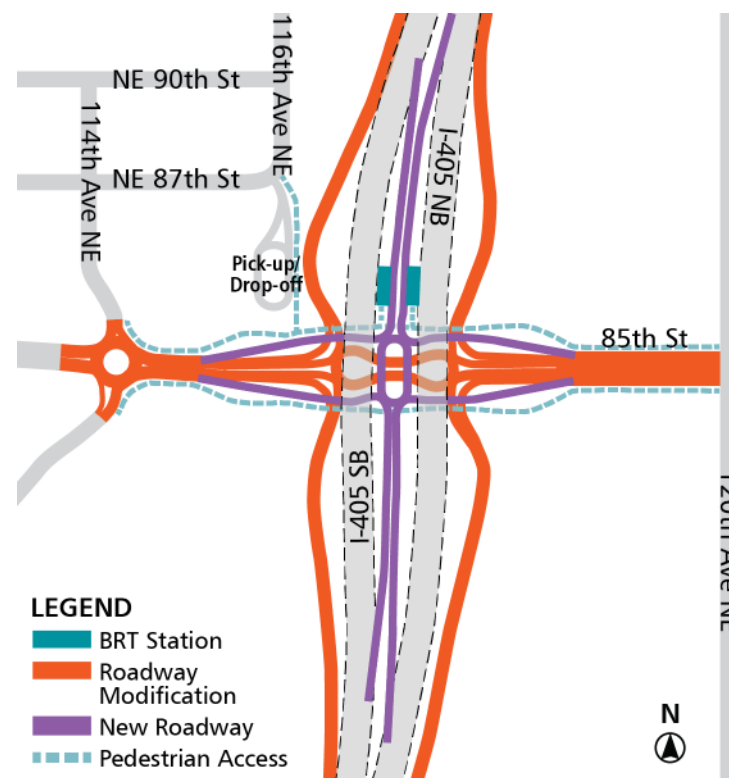


## BRT STATION



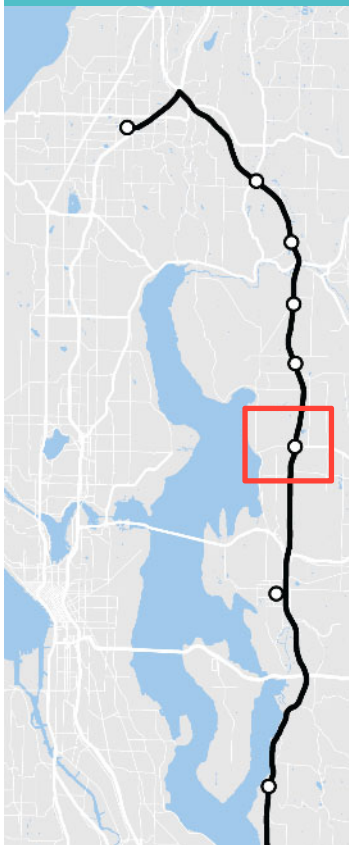
# NE 85th Street (Kirkland)

- WSDOT and Sound Transit are partnering to build the station.
- WSDOT will build new direct access ramps from I-405 express toll lanes to support BRT service.
- Local bus stops will be located on the same level as BRT stops for easy transfers.

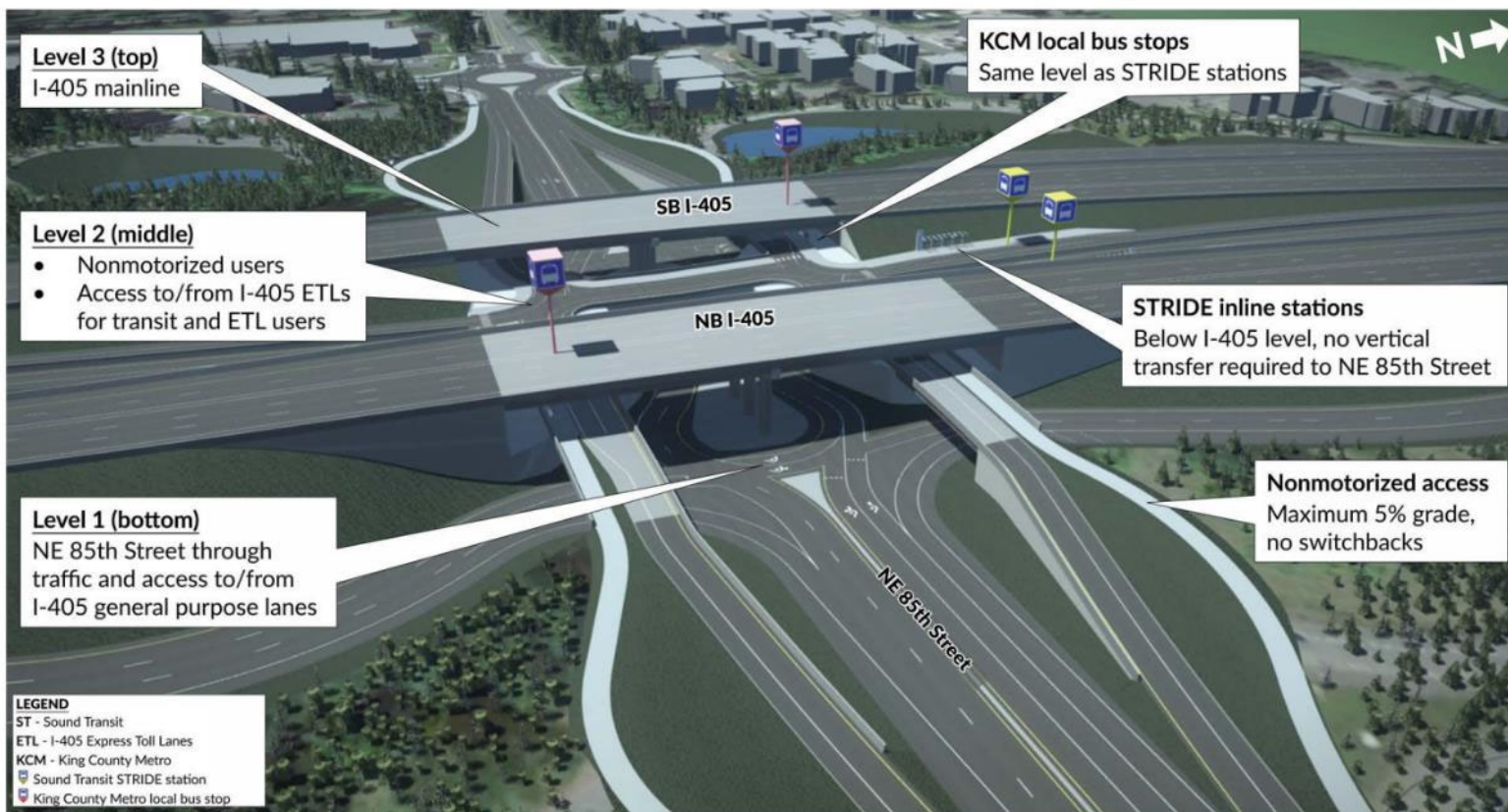


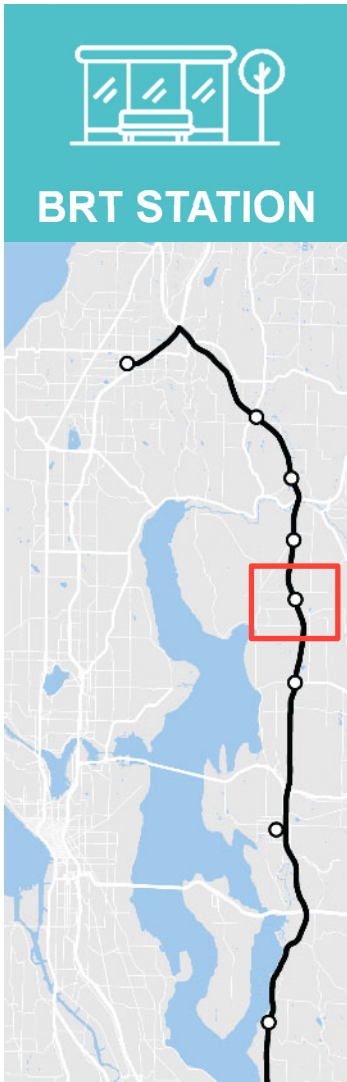


## BRT STATION



# NE 85th Street (Kirkland)





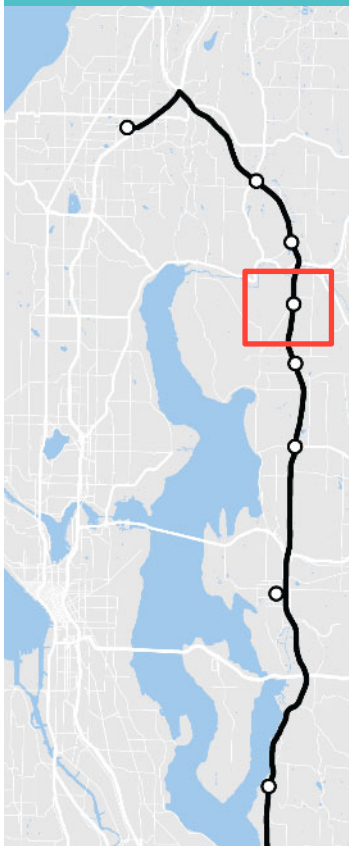
## Totem Lake/Kingsgate (Kirkland)

- Located at existing Totem lake freeway station.
- New parking garage that will add a net 400 parking stalls at the nearby Kingsgate Park and Ride.
- Partnership between ST, WSDOT & Kirkland



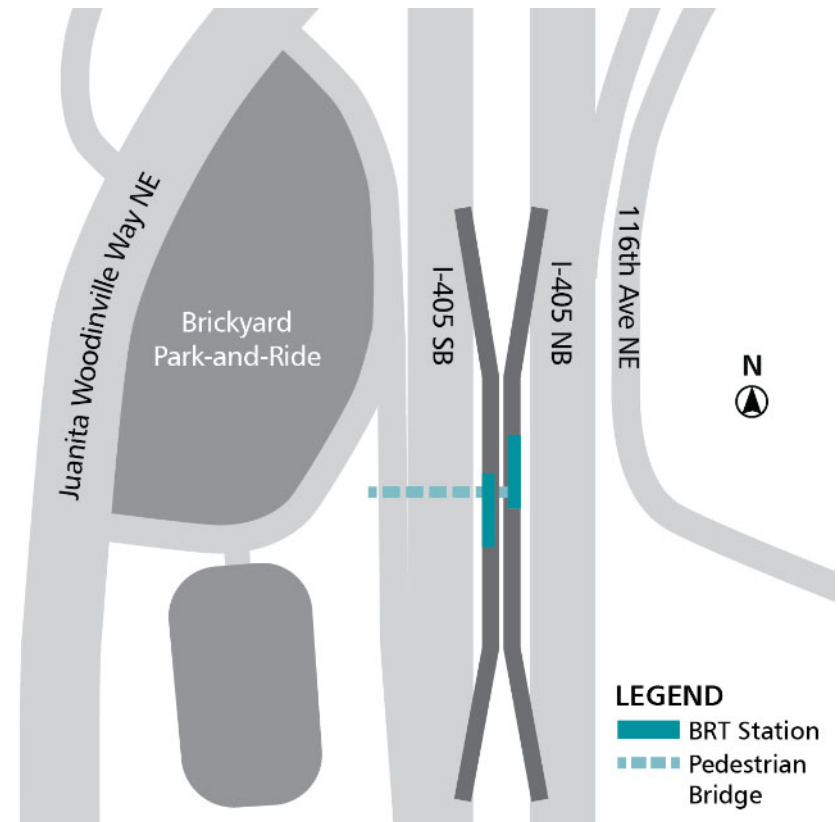


## BRT STATION



# Brickyard (Bothell)

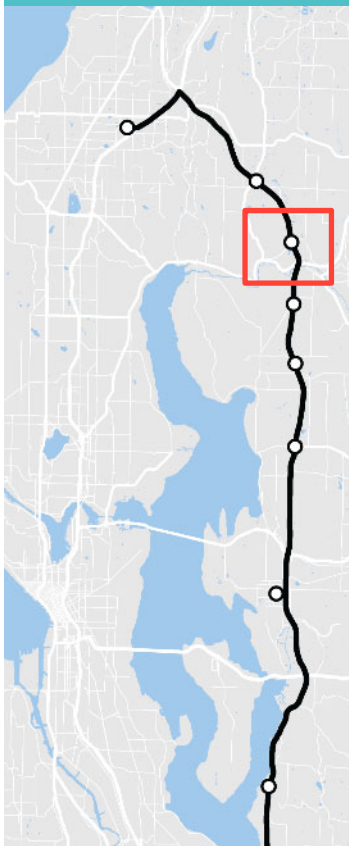
- Will serve existing Brickyard Park and Ride.
- Inline BRT station connected to the park-and-ride by a pedestrian bridge.







BRT STATION



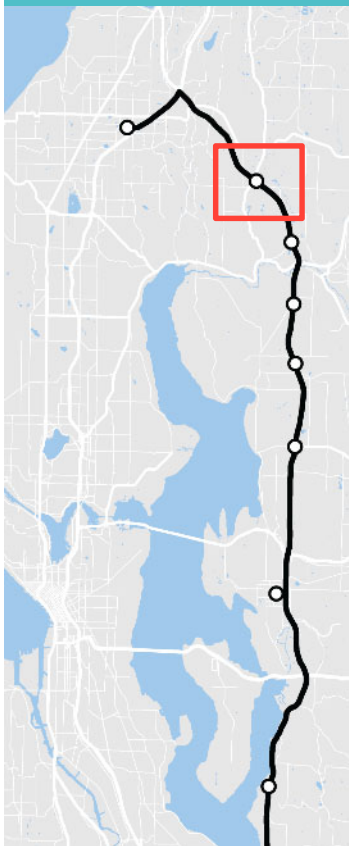
## SR 522/I-405 Transit Hub (Bothell)

- Riders will transfer between I-405 BRT North line and SR 522/NE 145th BRT.
- Will serve new pedestrian connections to campus.



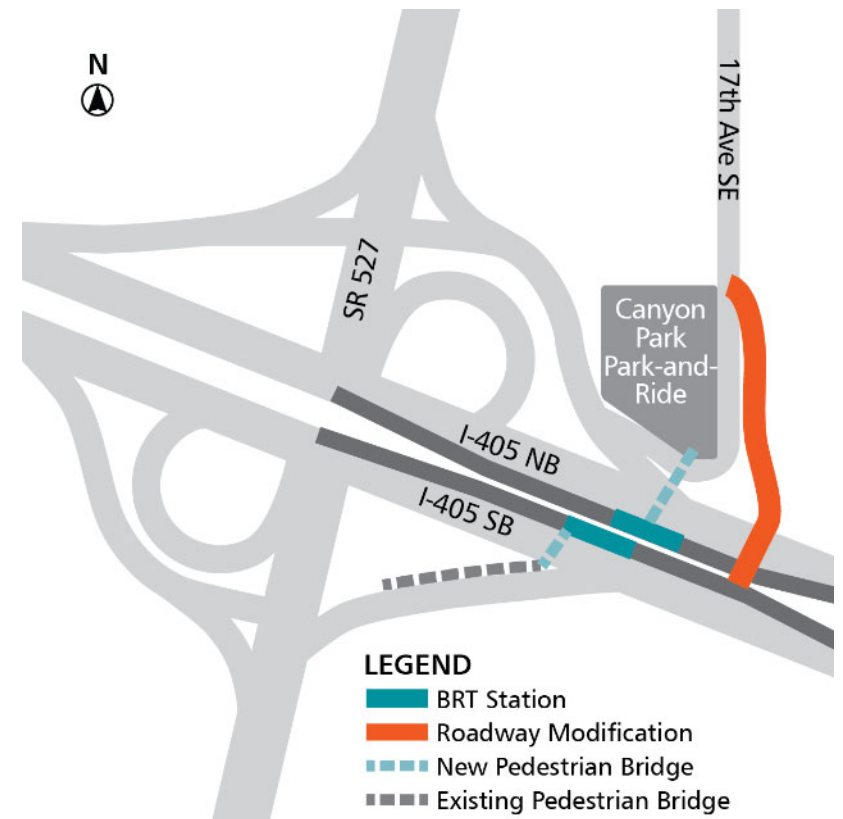


BRT STATION



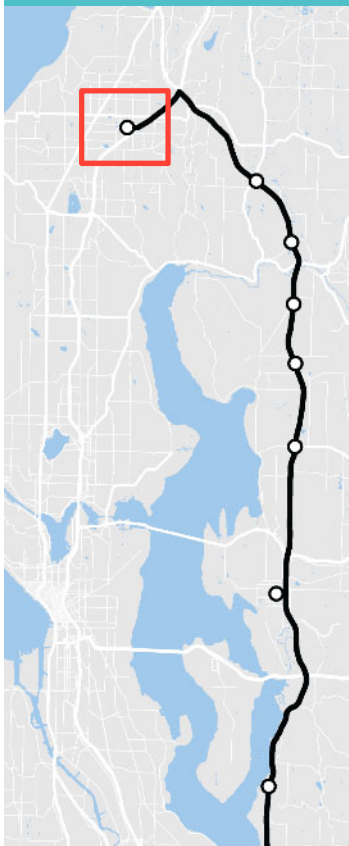
## Canyon Park (Bothell)

- WSDOT is designing Express Toll Lanes (ETLs) between Canyon Park and Totem Lake.
- This station will be located west of the Canyon Park Park and Ride on new direct access ramps to the ETLs.





**BRT STATION**



## *Lynnwood City Center*

- Located at existing Lynnwood Transit Center/Park and Ride.
- Lynnwood light rail extension: 2024.
- Riders will be able to transfer between BRT and Link at the future Lynnwood City Center station.





# I-405 BRT travel times

## AM peak hour travel times to Bellevue

### North Line – Lynnwood to Bellevue



### South Line – Burien to Bellevue



\*Preliminary travel time estimates for planning purposes, subject to change. Existing travel times are average times. Year 2025 estimates assume new express toll lanes are open between Renton to Bellevue. Updated information will be provided prior to beginning service.

***SR 522/ NE 145<sup>th</sup> BRT Project***

# SR 522/NE 145<sup>th</sup> Street Project

## Project Overview: Shoreline to Bothell

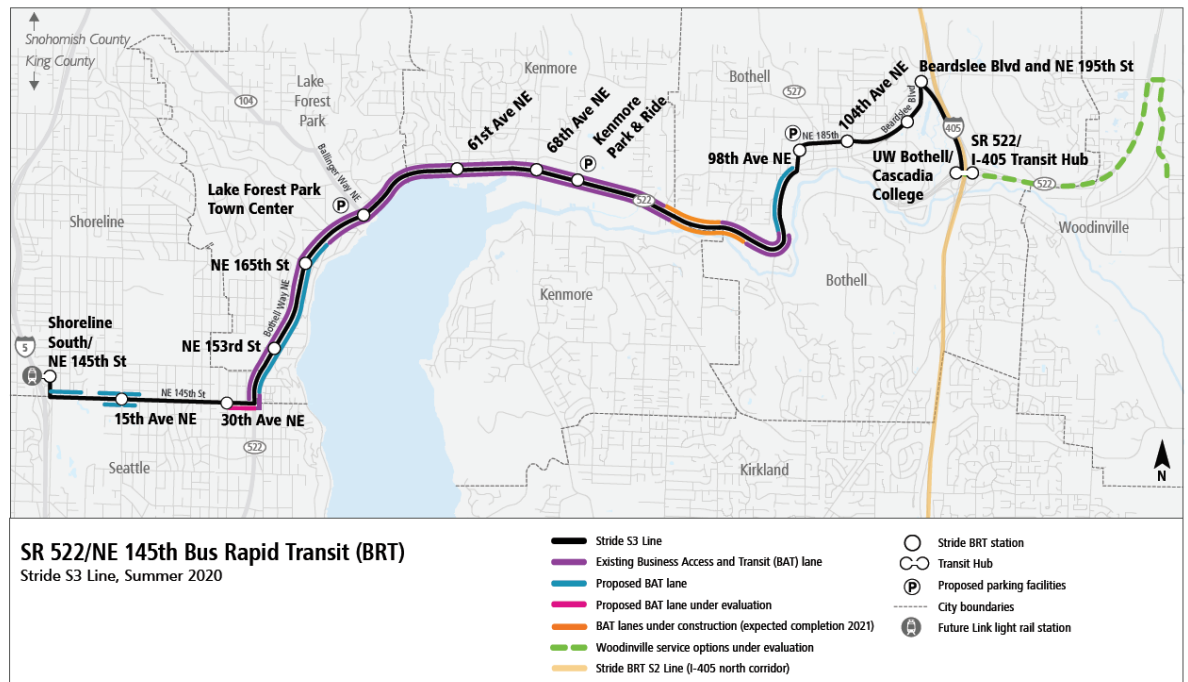
- 8-mile corridor
- 12 BRT station pairs across 4 cities
- Three new/expanded parking facilities
- Connection to Link light rail in Shoreline
- Transfer to I-405 BRT in Bothell
- Separate Bothell to Woodinville service



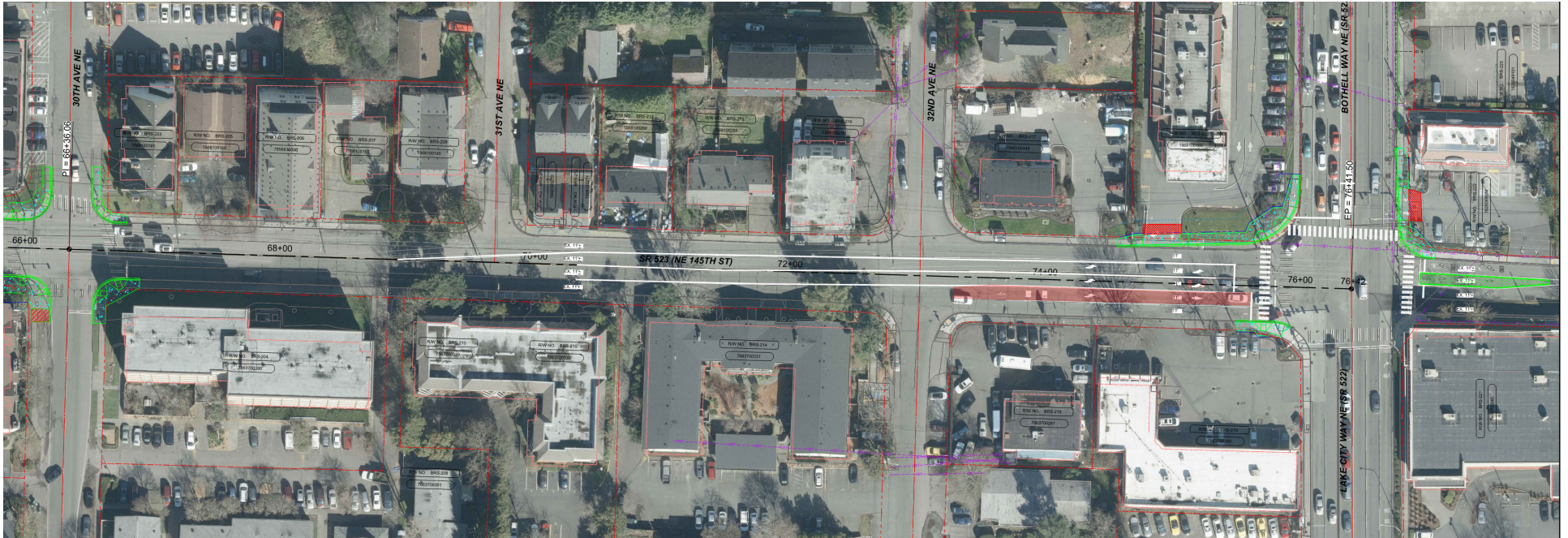
# SR 522/NE 145<sup>th</sup> Street Project

## Project Refinements

- Alternative service to Woodinville
- BAT lane improvements



# Seattle/Shoreline

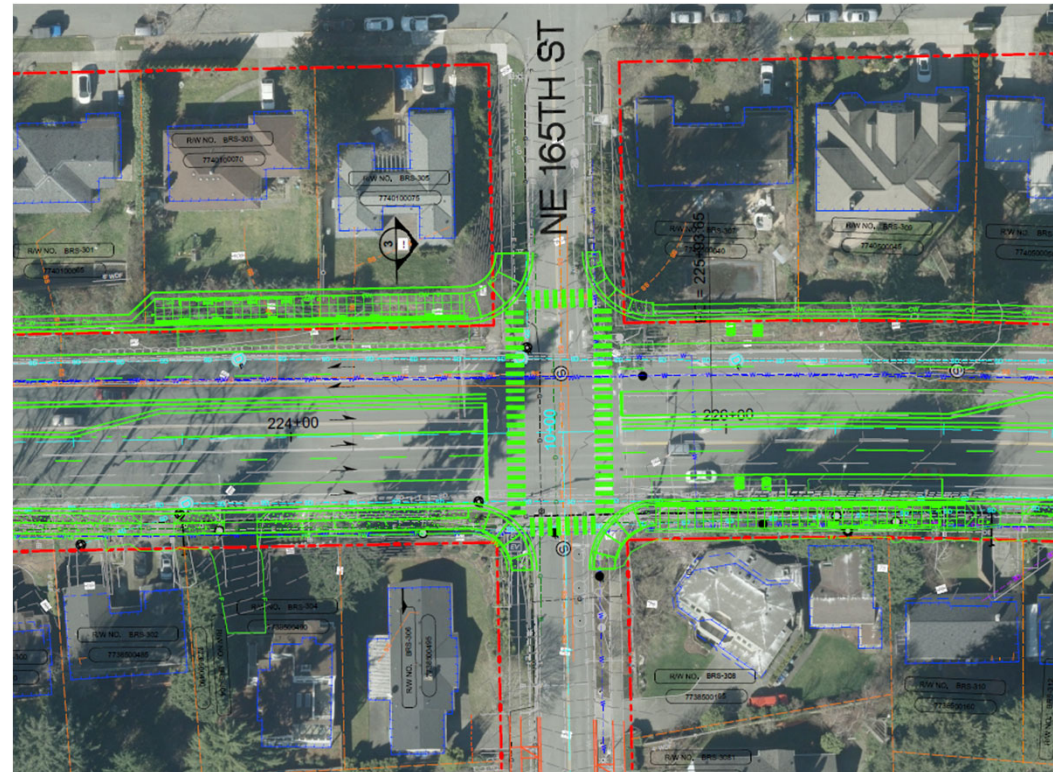


- Designs for NE 145th between 30th and SR 522
- City of Shoreline roundabout updates



# Lake Forest Park

- 30% design updates
- Design of shift westward underway

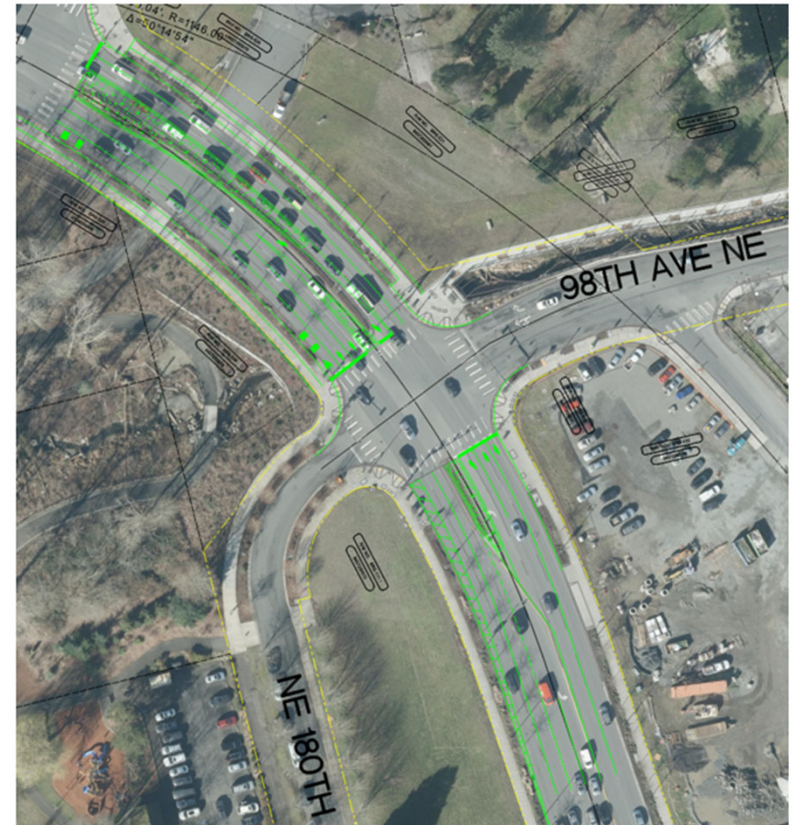


## **Kenmore**

- **Kenmore Park-and-Ride TOD Planning report**
  - ST report documents planning workshops, TOD feasibility analysis and findings.
  - ST will share the report with workshop stakeholders by the end of July 2020.
- **KCM partnership update**
  - ST continues to work with KCM to evaluate potential delivery strategies (KCM-led delivery) and partnership into implementation.

## Bothell

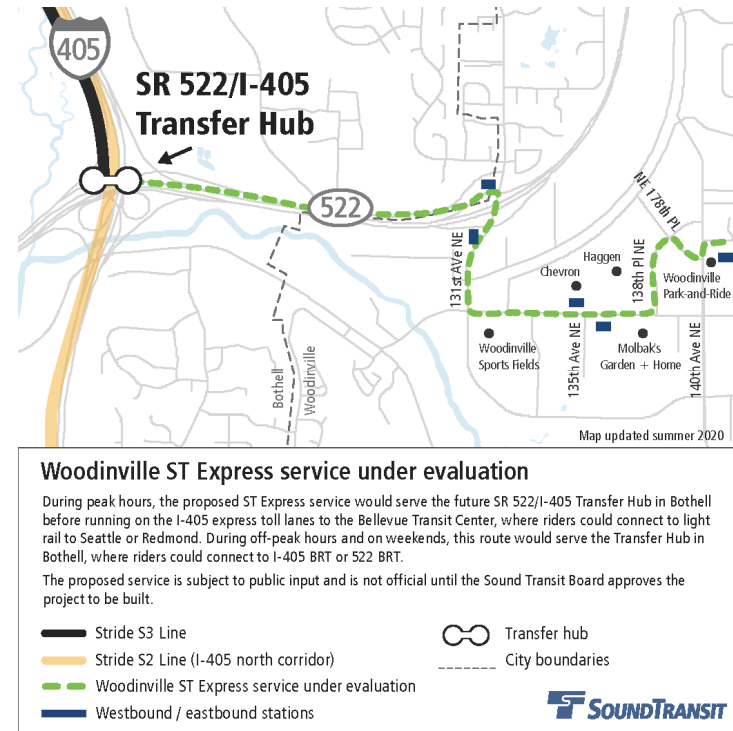
- **Finalize 10% design elements for alignment**
  - City has submitted official comments.
  - Continue working with City to reach agreement on eastbound BAT lane, pedestrian crossing treatments, and parking impacts.





# Woodinville

- **Proposed service concept to be considered by Sound Transit Board as part of SR 522 Project to be Built**
  - Peak ST Express service between Woodinville, 405/522 transit hub, and Bellevue.
  - Off-peak ST Express service between Woodinville and 405/522 transit hub.



# Vehicle propulsion and selection

- Early scan potential propulsion technologies
- Current status of BEB production in the US
- Maintenance base considerations
- Compare both BRT corridors suitability for electric bus operations



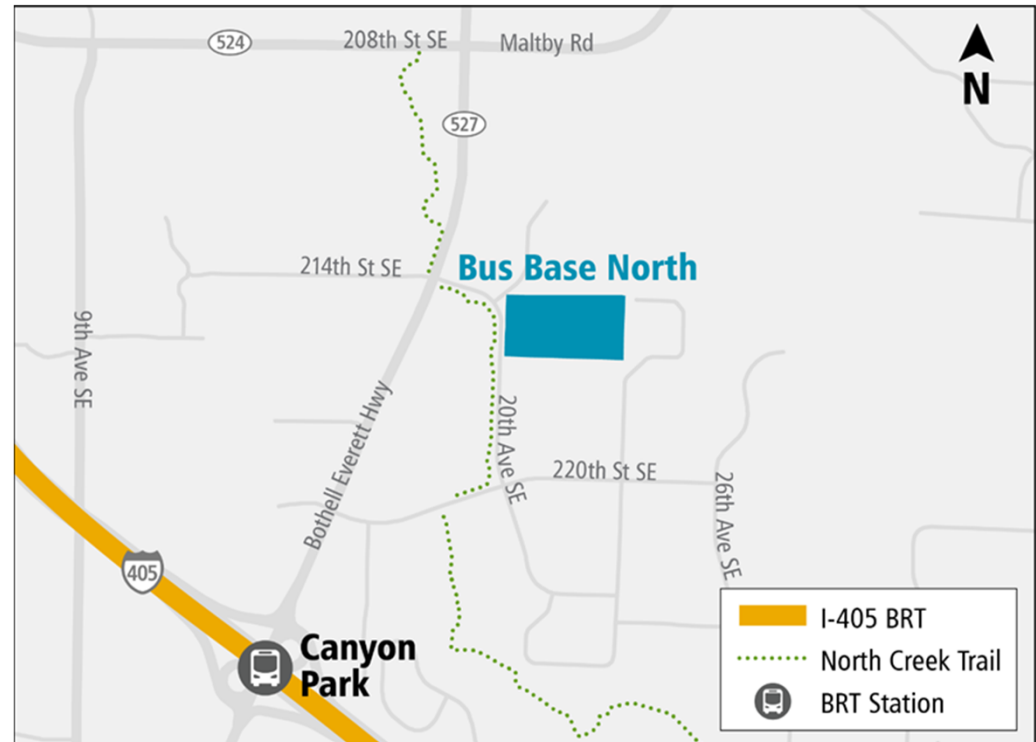
King County Metro

# ***BRT Bus Base***

# Bus Base North

## Location

- Canyon Park subarea of Bothell
- In a business park
- Close proximity to I-405 and SR 522
- Adjacent to a similar use school bus base



## ***BRT Bus Base facility***

- Accommodates up to 120 buses
- I-405 and SR 522/145th BRT, some ST Express service
- Maintenance and operations building, two floors
  - Fuel and wash buildings
  - Above-ground fuel tanks
- Design to fit within the Community

# ***Phase 3 look ahead***

## ***Engineering***

- Advance design to 30%
- Roadways, parking garages, signals, utilities, systems

## ***Continued 3rd party coordination***

- Letters of Concurrence

## ***Environmental review***

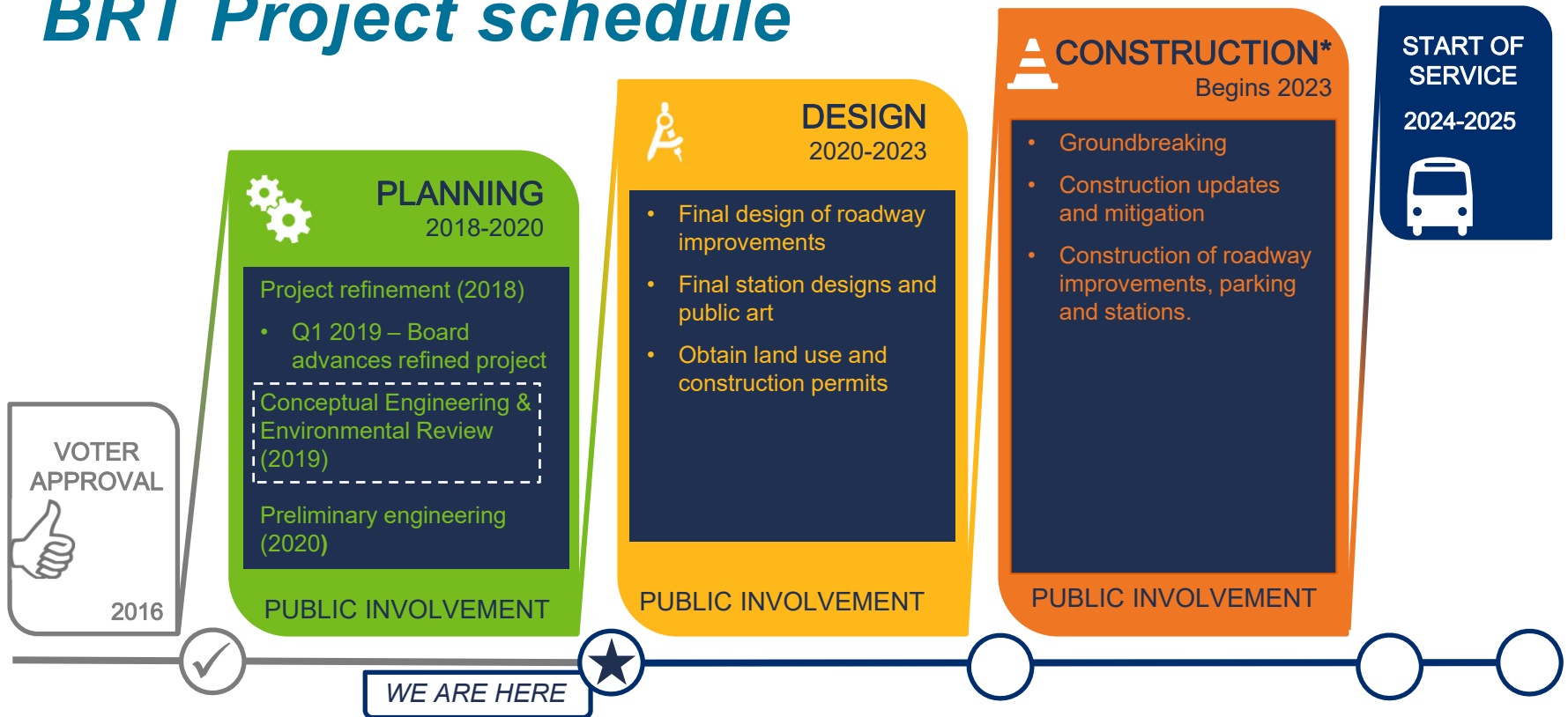
- Ensure SEPA commitments included in Phase 3 design work
- Track project design for changes

## ***Environmental permitting for BBN and I-405 BRT***

## ***Regulatory permitting***

## ***Ongoing stakeholder engagement***

# BRT Project schedule



\*Construction for most of the BRT projects are expected to begin by 2023 and be completed by 2024. Construction of some elements may begin before 2023 and others may occur after service starts in 2024.

***Questions?***



*Thank you.*



 [soundtransit.org](https://www.soundtransit.org)

