

Northgate Link Extension Briefing

Citizen Oversight Panel

3/21/2019

Project Overview



- 4.3 mile extension from UW to Northgate
- 3 light rail stations
- Fast and reliable service in congested I-5 corridor (14 minutes from Northgate to Downtown)
- Estimated over 60,000 weekday boardings (2030)
- Serves academic facilities (North Seattle College, Roosevelt High School and UW)
- Serves active business districts at Northgate, Roosevelt and U District
- TOD projects are moving ahead at all three station sites

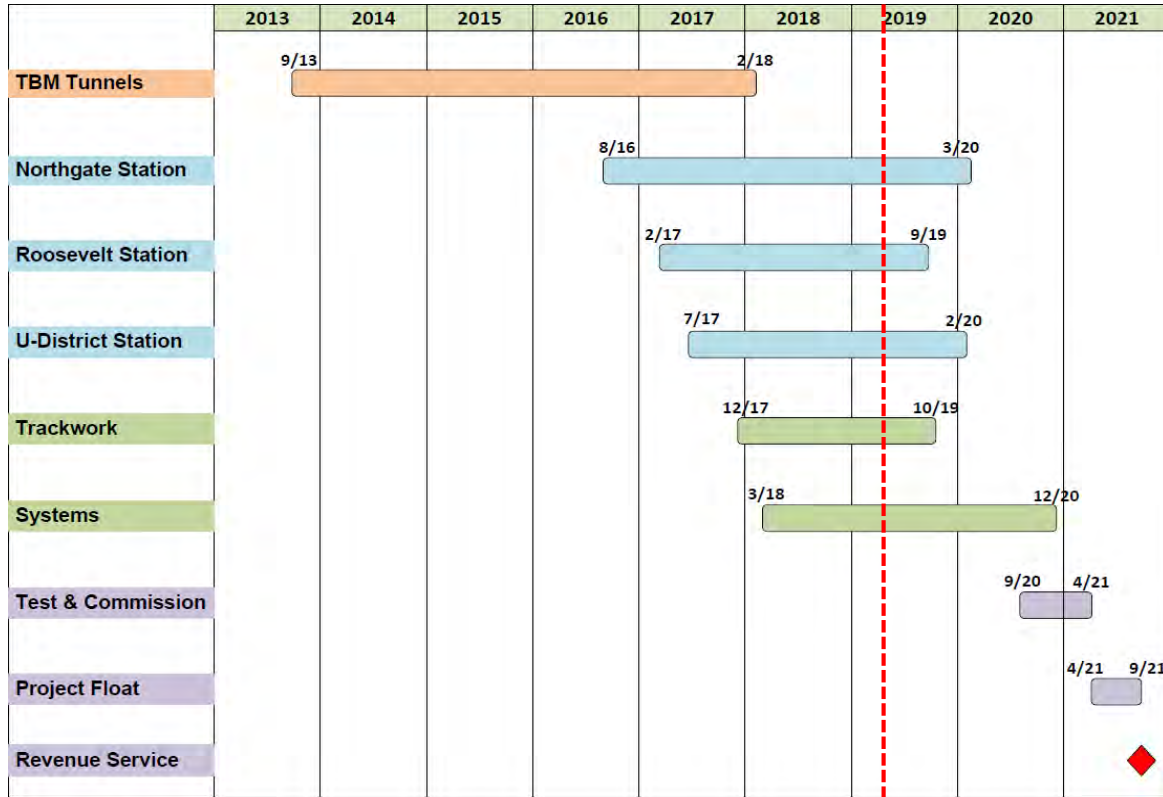
Project Budget

Financial Snapshot	Millions
Project Baseline Budget	\$1,899
Committed	\$1,647 (87%)
Incurred	\$1,383 (73%)

Financials as of February 2019

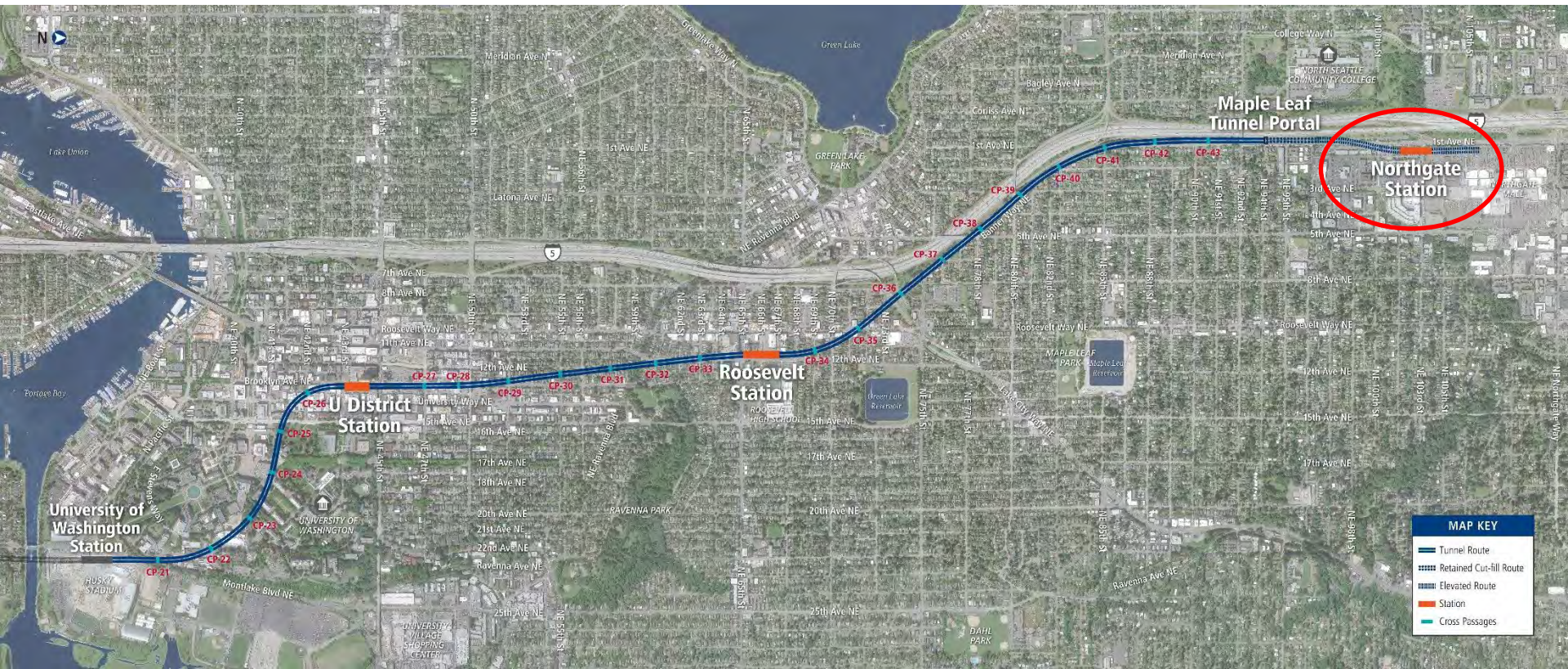
- Received TIFIA loan for \$615 million
- Estimated cost to complete shows potential surplus of approx. \$52 million

Project Schedule



- Revenue service scheduled for September 2021
- Project-wide schedule float remains at about 5 months

Project Alignment



MAP KEY	
	Tunnel Route
	Retained Cut-fill Route
	Elevated Route
	Station
	Cross Passages



Northgate Station, Guideway, Garage

Contract Overview:

- Design-Bid-Build contract with Absher Construction
- Scope of Work: 0.7 mile elevated guideway, elevated station, 450-stall parking garage
- Contract Amount: \$185m
- Construction Start: October 18, 2016
- Scheduled Completion: Q1 2020
- Construction 73% Complete



Northgate Station, Guideway, Garage



Garage Successfully Opened November 19, 2018

Northgate Station, Guideway, Garage



Elevated Guideway Tail Track Looking North

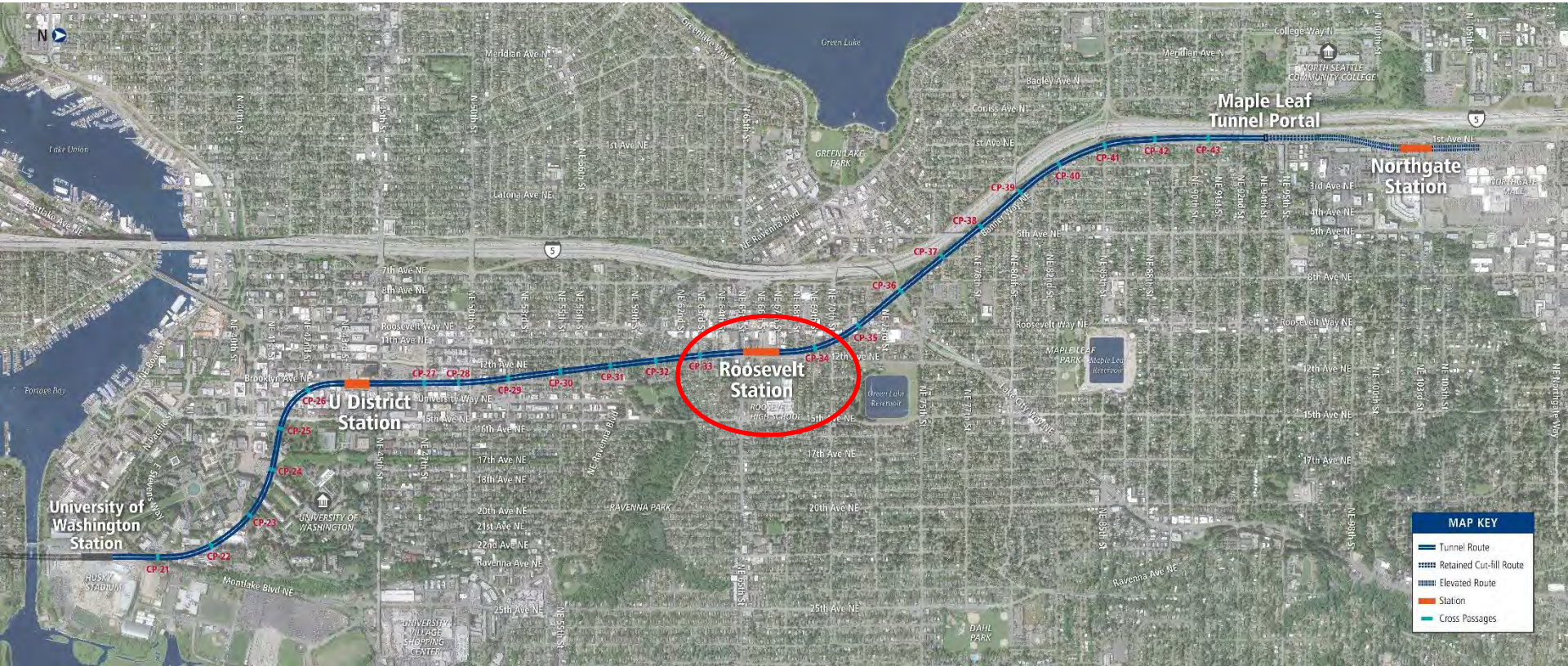


Station Plaza and Mezzanine Levels

Near Term Project Focuses:

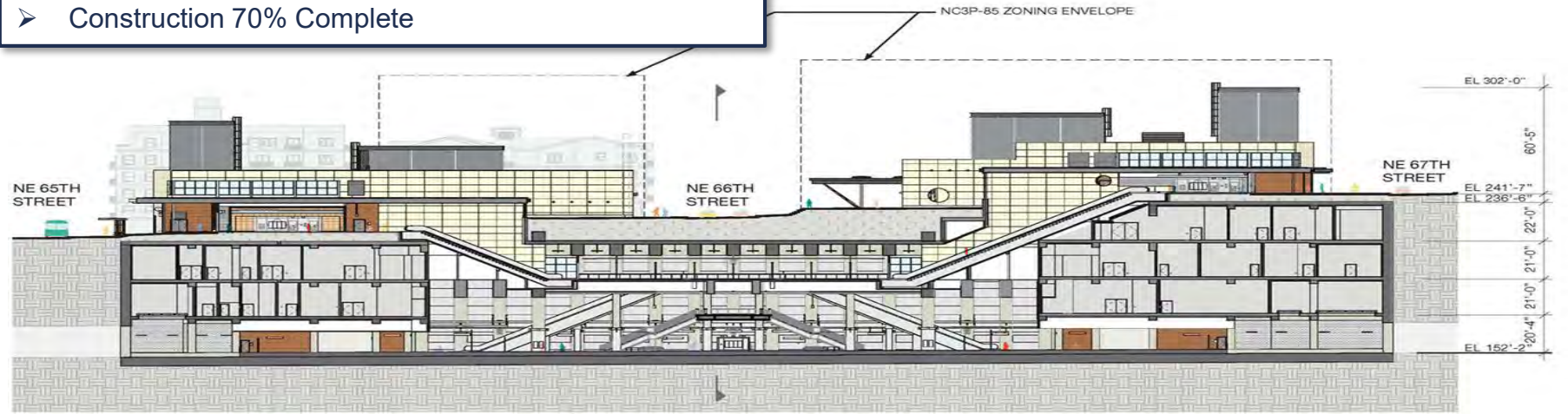
- Coordinated Installation with Systems Contractor
- Station Mechanical, Electrical, Architectural
- Traction Power and Signal House Foundation Turnover

Project Alignment



Roosevelt Station

- Contract Overview:
- GCCM contract with Hoffman Construction
 - Scope of Work: 90-ft deep, 400-ft long, 4-level underground station; 2 head houses
 - Contract Amount: \$158m
 - Construction Start: February 2017
 - Scheduled Completion: Q4 2019
 - Construction 70% Complete



Roosevelt Station

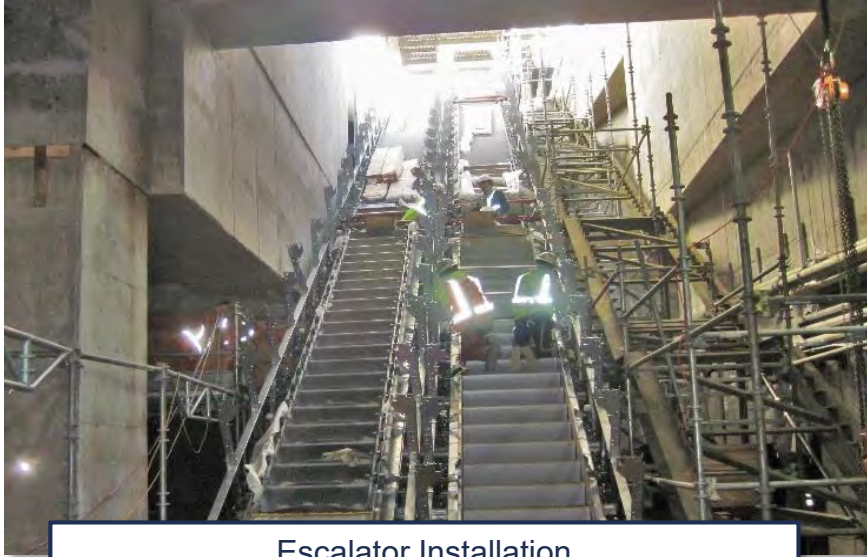


Architectural Rendering Looking NW



Actual Progress Photo Looking NW

Roosevelt Station



Escalator Installation

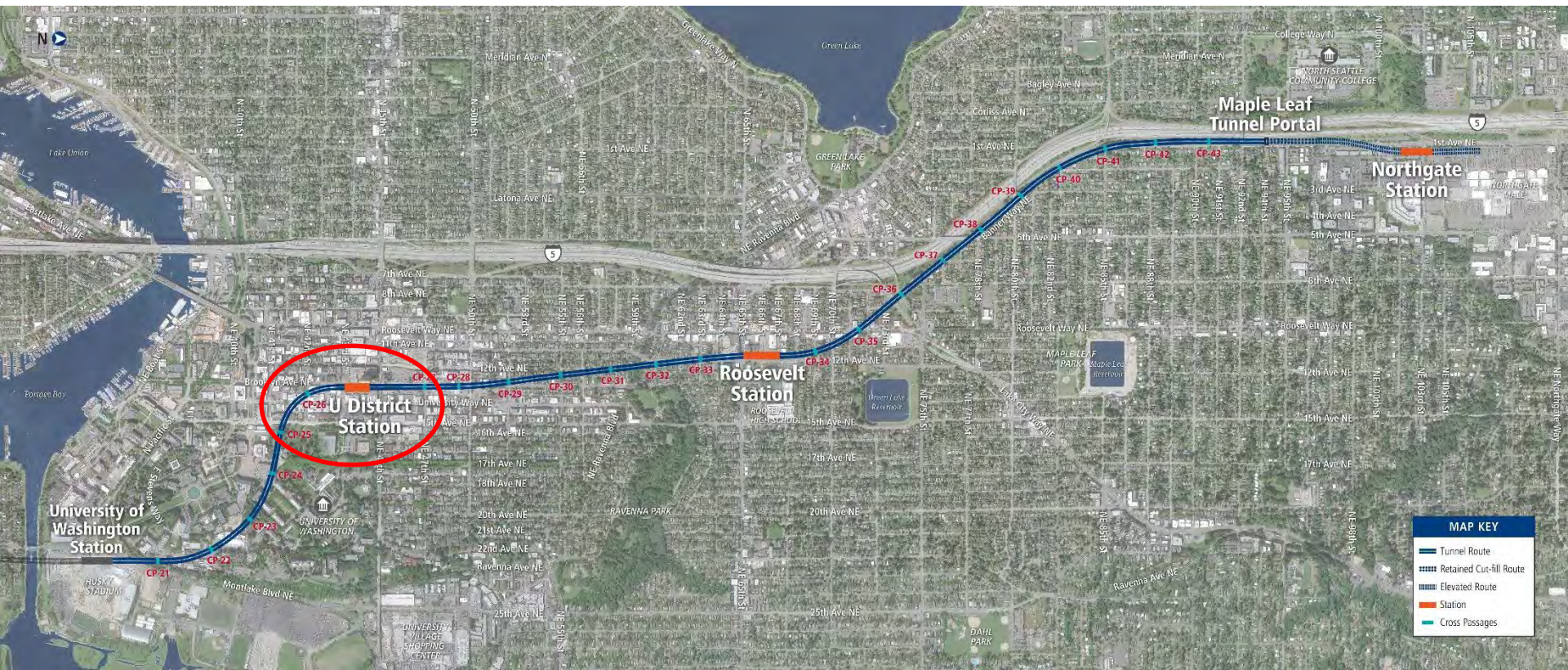


North Headhouse Roof Looking South

Near Term Project Focuses:

- Coordinated Installation with Systems Contractor
- Start of Mechanical/Electrical Commissioning
- Architectural Features

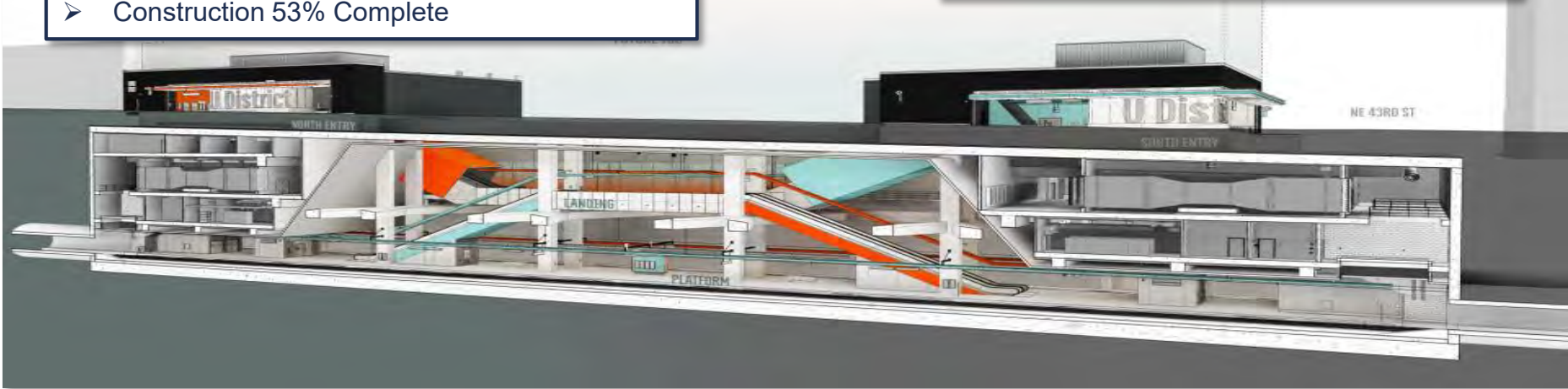
Project Alignment



U District Station

Contract Overview:

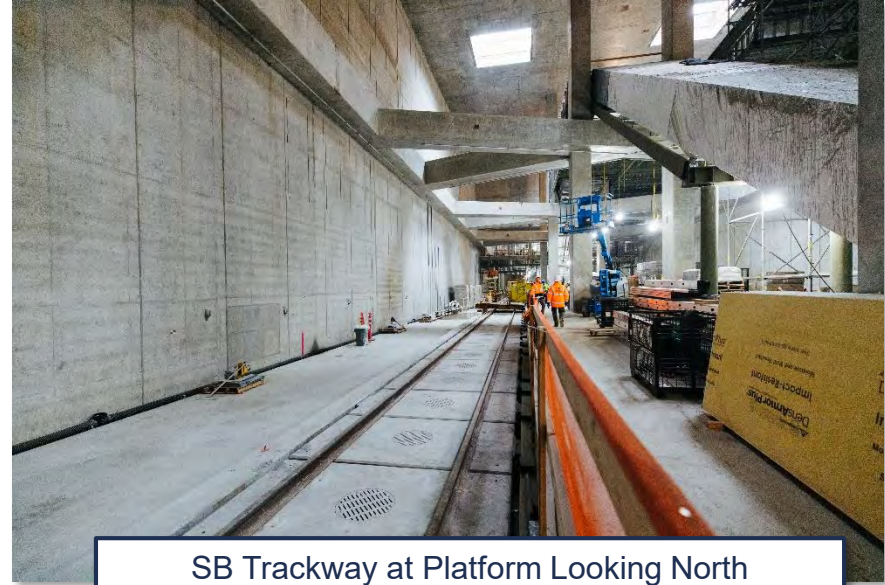
- GCCM contract with Hoffman Construction
- Scope of Work: 80-ft deep, 400-ft long, 4-level underground station; 2 head houses
- Contract Amount: \$161m
- Construction Start: July 2017
- Scheduled Completion: Q1 2020
- Construction 53% Complete



U District Station



South Head House Structure Looking South



SB Trackway at Platform Looking North

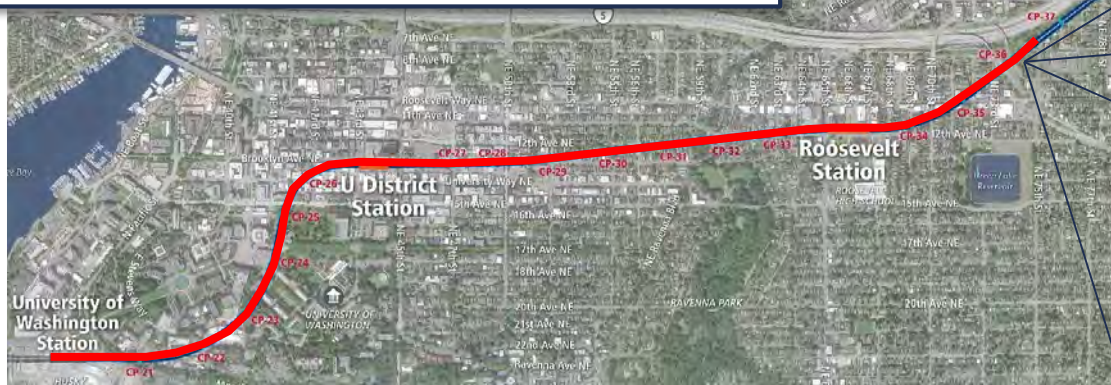
Near Term Project Focuses:

- Coordinated Installation with Systems Contractor
- Additional Platform-Mezzanine Public Staircase
- Fire Alarm and Controls work to support IDS Cutover

Trackwork

Contract Overview:

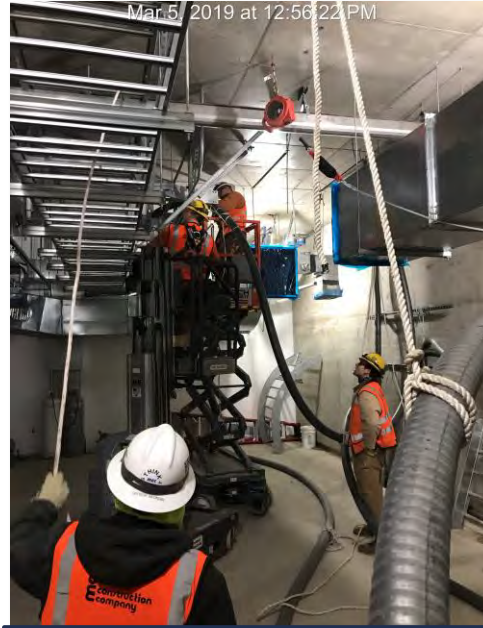
- DBB contract with Stacy and Witbeck
- Scope of Work: Trackwork (plinth + rail) for alignment; 5 Hz & 16 Hz floating slabs
- Contract Amount: \$75m
- Construction Start: August 2016
- Scheduled Completion: Q4 2019
- Construction 83% complete



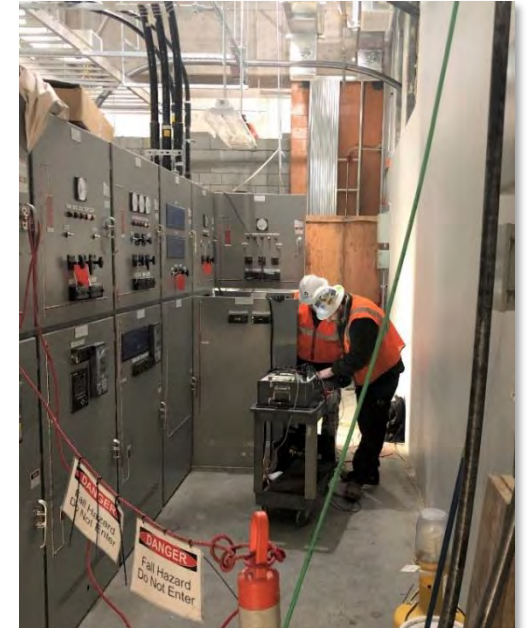
Systems Installation

Contract Overview:

- Heavy Civil GC/CM contract with Mass Electric (MEC)
- Scope of Work: Traction Power, Communications, Signaling
- Contract Amount: \$103.7m
- Construction Start: Q2 2018
- Scheduled Completion: Q4 2020
- Construction 26% complete



Power Cable Installation at UDS



Equipment Testing at Roosevelt Station

Near Term Project Focuses:

- Station Access for Equipment Installation
- Emergency Ventilation System Communication Fiber Installation

Contract Summary, Labor Force, S/DBE

Contract Summary

- 11 Major contracts awarded \$1.24 billion
- Construction completed to date: 77%

Labor Force

- | | |
|---------------------------------|--------------------|
| Total Labor Hours Worked | 4.2 million |
| • People of Color | 31.5% |
| • Females | 9.1% |
| • Apprentices | 13.1% |

Small/Disadvantaged Businesses (S/D BE)

- | | |
|----------------|----------------------|
| • SBE Goal: 8% | Actual to-date 16.3% |
| • DBE Goal: 4% | Actual to-date 9.3% |

Top Risks – Northgate Link

- Coordination of multiple contract interfaces to complete start-up, commissioning and rail activation
- Shortage of skilled labor and staff – both contractors and internal staff
- Third party approvals – City of Seattle, King County, WSDOT, UW

Thank you.



 [soundtransit.org](https://www.soundtransit.org)

