

Northgate Link Extension Briefing

Citizen Oversight Panel

5/5/21

Why we are here

- Provide a project update on the Northgate Link Extension

Project Overview



- 4.3 mile extension from UW Station to Northgate
- 3 light rail stations & 450-stall parking garage
- Fast and reliable service in congested I-5 corridor (14 minutes from Northgate to Downtown)
- Serves academic facilities (North Seattle College, Roosevelt High School, and UW)
- Serves active business districts at Northgate, Roosevelt, and U District
- TOD projects are planned/underway at all three station sites

Project Safety

- *COVID-19 protocols*
- *Overhead Catenary System (OCS) energized & active LRV testing along the alignment*
- *This week is Construction Safety Week*
- *Thank you to our contractors, consultants, and ST staff for ensuring the safety of our workforce, the public, and our assets*

Project Budget

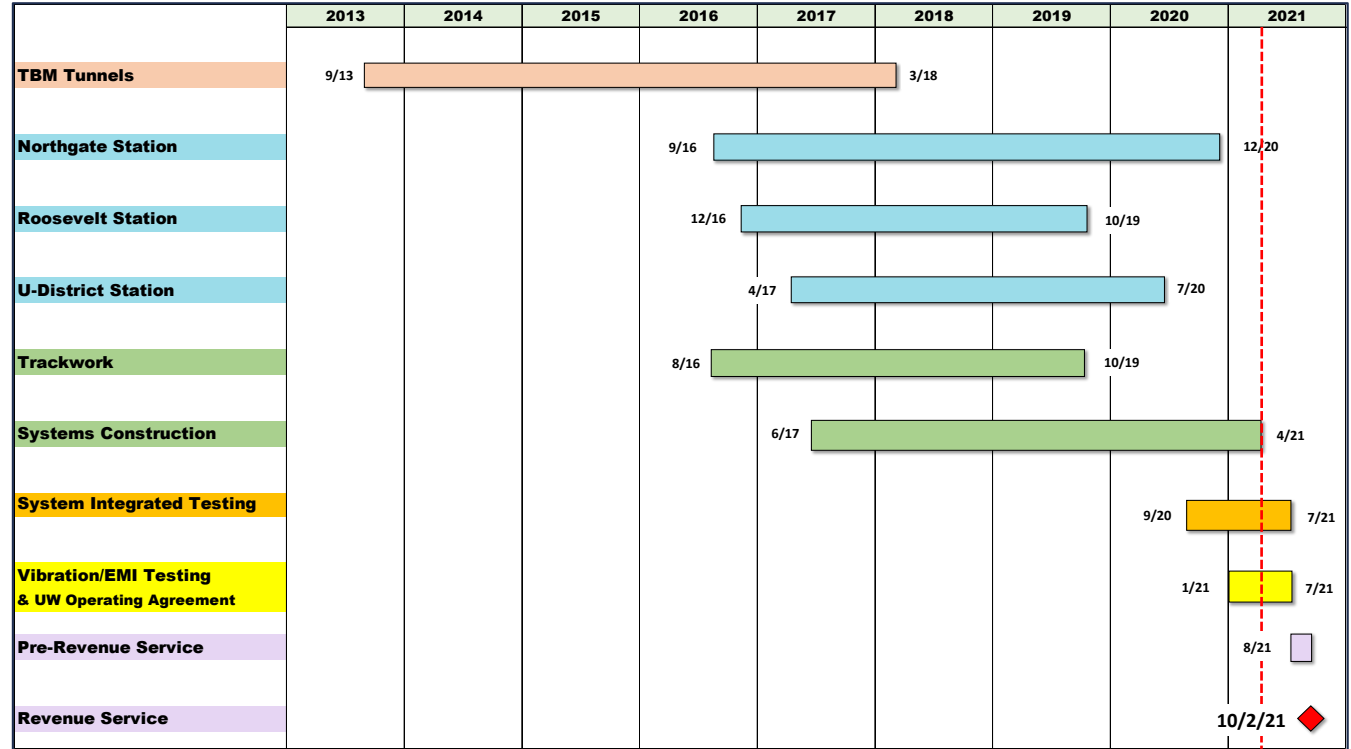
Financial Snapshot	Millions
Project Baseline Budget	\$1,899
Committed	\$1,734 (91%)
Incurred	\$1,705 (90%)

Financials as of March 2021

- Received TIFIA loan for \$615 million
- Estimated cost to complete shows a project surplus of at least \$52 million

Project Schedule

- October 2, 2021 is the Revenue Service Date
- 98% complete with construction
- 60 days dedicated to Pre-Revenue Service
- Current schedule has two critical paths:
 - 1 System Integrated Testing
 - 2 Vibration/EMI Testing under UW campus



Northgate Station, Guideway, Garage

Contract Overview:

- Design-Bid-Build contract with Absher Construction
- Scope of Work: 0.7 mile elevated guideway, elevated station, 450-stall parking garage
- Construction Start: October 2016
- Substantial Completion: December 2020



Northgate Station, Guideway, Garage

Current Work:

- Punchlist closeout
- Documentation and permit closeout
- SDOT Pedestrian bridge construction ongoing



Roosevelt Station

Contract Overview:

- GCCM contract with Hoffman Construction
- Scope of Work: 90-ft deep, 400-ft long, 4-level underground station; 2 head houses
- Construction Start: February 2017
- Substantial Completion: October 2019



Roosevelt Station

Current Work:

- Change order work
- Documentation and permit closeout
- Interim equipment maintenance
- Adjacent TOD construction progressing



TOD at Roosevelt Station



U District Station

Contract Overview:

- GCCM contract with Hoffman Construction
- Scope of Work: 80-ft deep, 400-ft long, 4-level underground station; 2 head houses
- Construction Start: July 2017
- Substantial Completion: April 2020



U District Station

Current Work:

- Change order work
- Documentation and permit closeout
- Interim equipment maintenance
- Vent shaft upgrades for future TOD



Systems

Contract Overview:

- Heavy Civil GC/CM contract with Mass Electric (MEC)
- Scope of Work: Traction Power, Overhead Catenary, Communications, Train Signals
- Construction Start: May 2018
- Scheduled Completion: Q2 2021
- Construction 93% complete



Systems

System Integrated Testing:

- Alignment-wide testing for each major system
 - OCS
 - Traction Power
 - Communications
 - Train Signals
- Testing involves both Kinkishario and Siemens vehicles



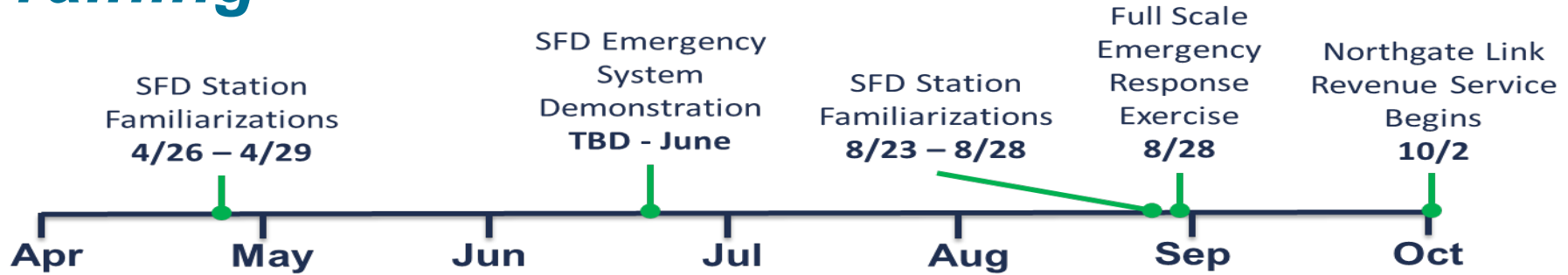
Vibration & Electromagnetic Interference (EMI) Mitigation Testing under UW Campus

Current Work:

- Successfully completed EMI testing
- Final vibration certification testing starting this week
- Ongoing weekly meetings with UW
- ST to negotiate updated operating agreement with UW after testing



Emergency Response Familiarizations & Training



Contract Summary, Labor Force, S/DBE

Contract Summary

- 11 Major contracts awarded \$1.24 billion
Construction completed to date: 98%

Labor Force

- Total Labor Hours Worked** **4.8 million**
- People of Color 31.5%
 - Women 8.6%
 - Apprentices 18%

Small/Disadvantaged Business (S/DBE)

- SBE Goal: 8.5% Actual to-date 13.9%
- DBE Goal: 5.5% Actual to-date 6.48%



Thank you.



 [soundtransit.org](https://www.soundtransit.org)

