

# ***Northgate Link Extension Briefing***

*Citizen Oversight Panel*

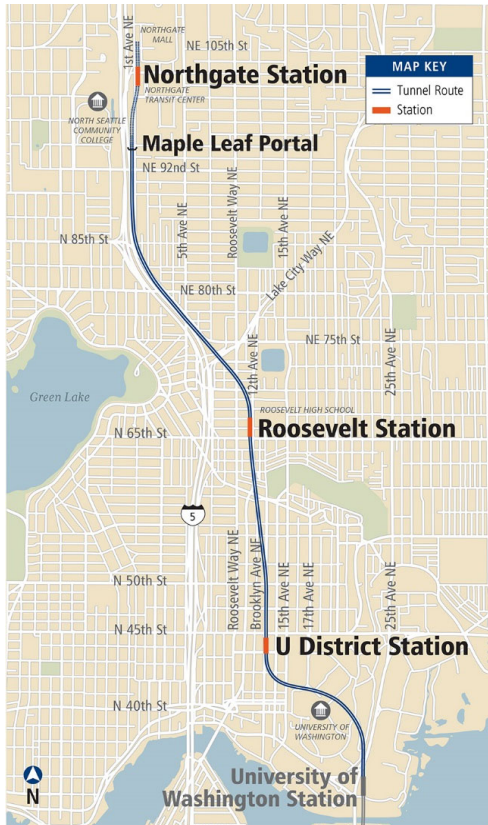
9/1/21



## *Why we are here*

- Provide a project update on the Northgate Link Extension

# Project Overview



- 4.3 mile extension from UW Station to Northgate
- 3 light rail stations & 450-stall parking garage
- Fast and reliable service in congested I-5 corridor (14 minutes from Northgate to Downtown)
- Serves academic facilities (North Seattle College, Roosevelt High School, and UW)
- Serves active business districts at Northgate, Roosevelt, and U District
- TOD projects are planned/underway at all three station sites

# Safety

- Track access coordination between contractors and operations
- Safety Certification for Revenue Service



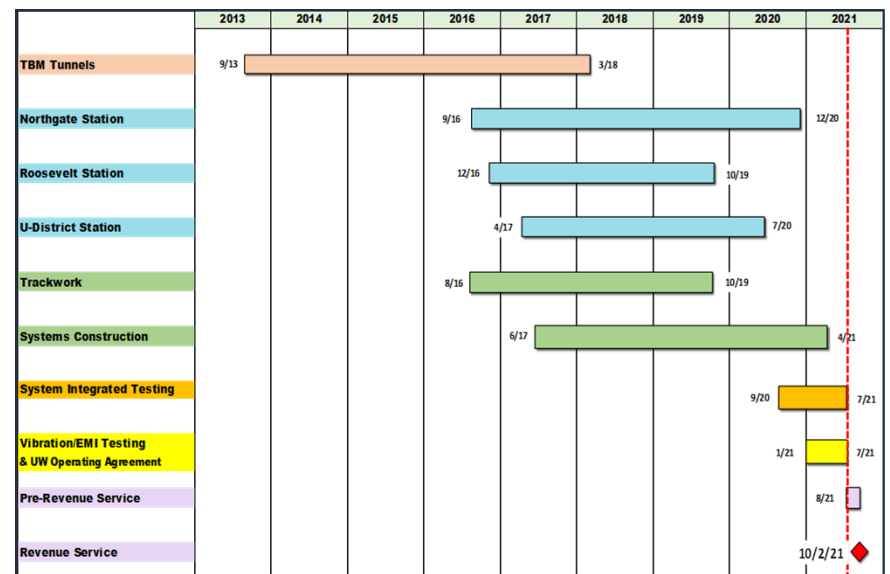
*Roosevelt Station Safety Signage*

## Budget / Schedule

Baseline Budget	\$1,899 M
Committed	\$1,734 M – 91%
Incurred	\$1,711 M – 90%

*Financials through June 2021*

- Projected underrun > \$52M
- 99% complete with construction
- Revenue Service scheduled for October 2, 2021



# Pre-Revenue Service



*U District Station*

- Operator familiarizations began on 8/16
- Trainway and stations handover to operations underway
- Simulated revenue service underway this week

# System Integrated Testing



*Northgate Station*

- Final integrated testing scheduled to occur during non-revenue hours (0100 – 0400)
- Both Siemens and Kinkisharyo light rail vehicles have been integrated into the project
- Monitoring system performance during Pre-Revenue Service



# *Vibration & Electromagnetic Interference (EMI) Mitigation Testing under UW Campus*

- All vibration and EMI testing complete
- Updated operating agreement with UW expected to be executed by week of 9/13





# *Emergency Response Familiarizations & Training*

- Station familiarization visits conducted for emergency responders over the past several months
- Emergency evacuation drill conducted at Roosevelt Station on 8/28





# *TOD at Roosevelt Station*



# *Opening Experience*

# ***Welcome manifesto***

Although we've spent years, months, and days of planning and building this station, we don't think of it as our station, but yours.

Your Home Station.

It's a connection of familiarity with your community, your neighborhood and the businesses around it. It's that feeling you get when returning from a long journey, or even a short one – that exhale of, "I'm home."

That is how we want you to feel every time you step off the train.

Think of it as a big, warm hug that says, "Welcome home. I'm so glad you're here."



hello  o!



hello  o!

¡bienvenidos!



# hello o!



欢迎

¡bienvenidos!



# hello o!



disc over



欢迎



¡bienvenidos!



# hello o!



disc over



欢迎



c nnect



¡bienvenidos!





# *Preview Event*



## *For media, stakeholders and partners*

**Oct. 1 at 5 p.m.**

- Top of Northgate Parking Garage
- Speaking program
- Live music and refreshments
- Ribbon cutting
- Group rides to all new stations for tours

*Public Opening*

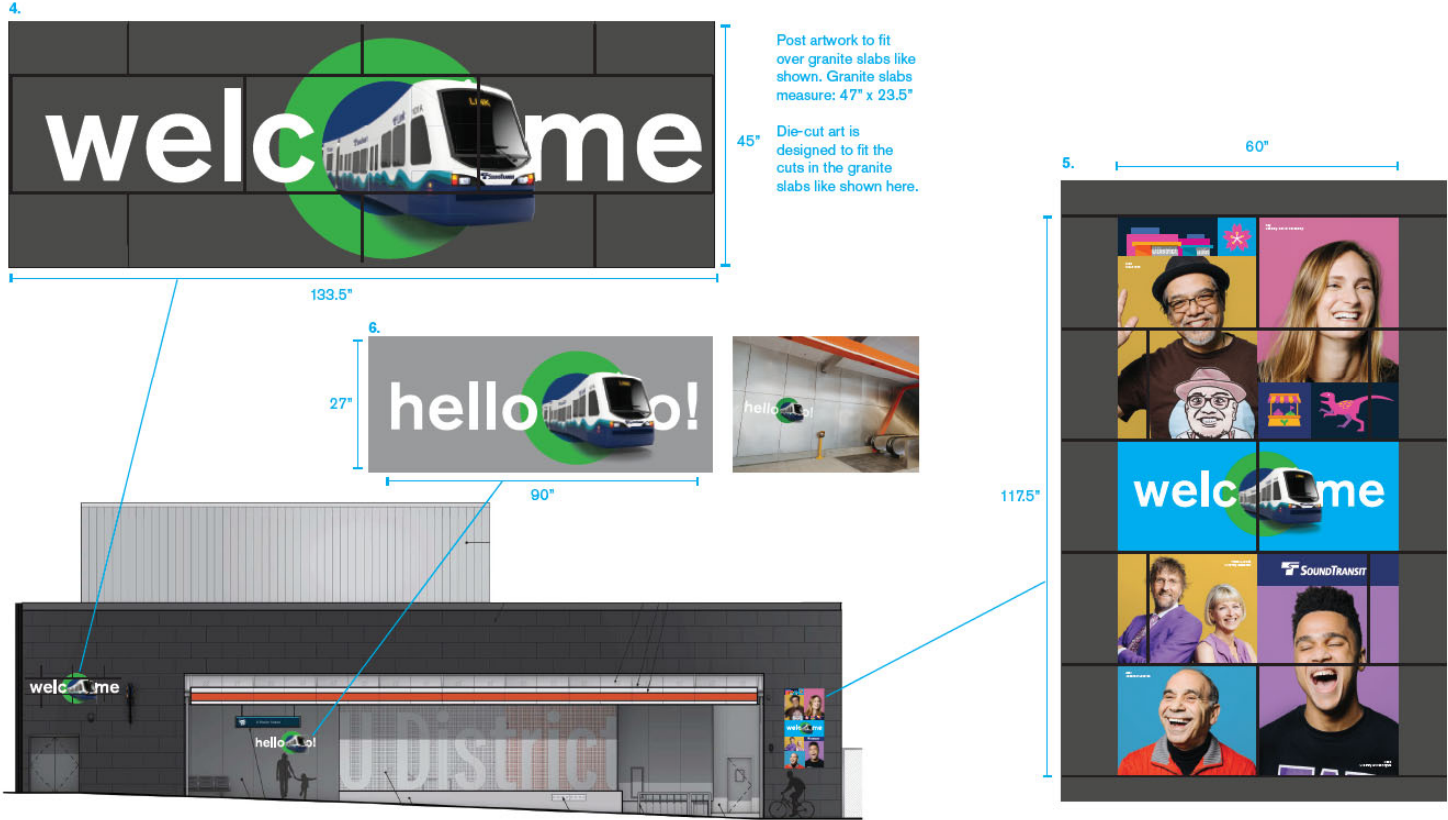
# ***Experiential Installations***

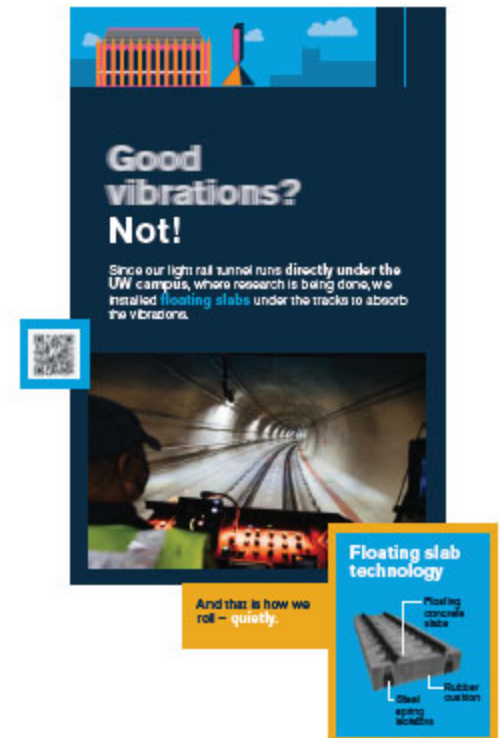
## ***Museum-like experience, Oct. 2 - 31***

- New programmatic approach
- Installations in-station for one month
- Ambassadors for welcome and rider info questions
- Sponsorship/partnerships and business relations tie-in
- Digital experience, internally produced campaign, regional advertising

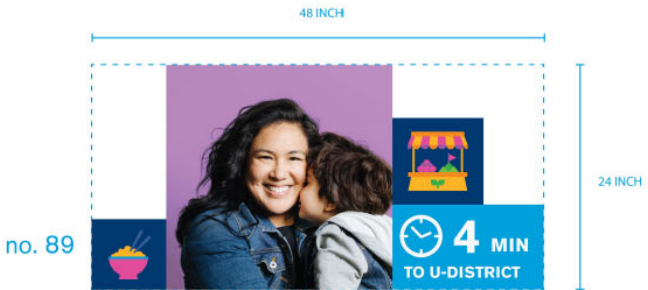
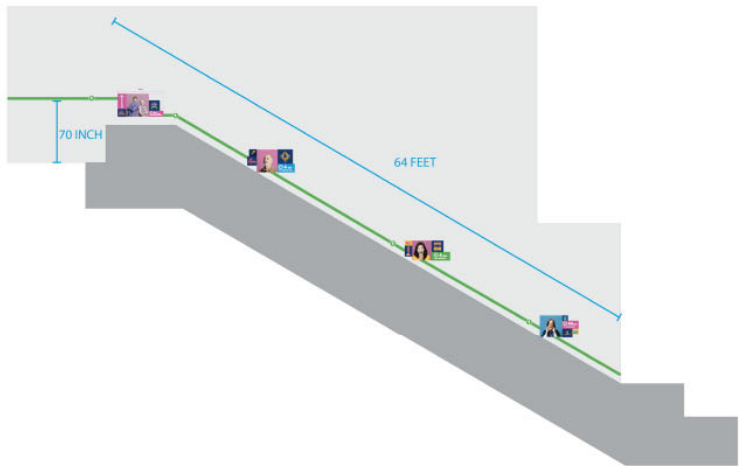
## ***Potential opening weekend enhancements, Oct. 2 & 3***

- Live music
- Coordinating with community organizations for events around our stations
- Sponsor activations





Station Interior / Escalator / South Entrance / no. 87 - 94



no. 87



no. 88

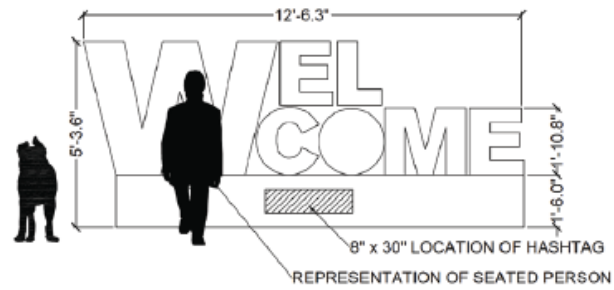
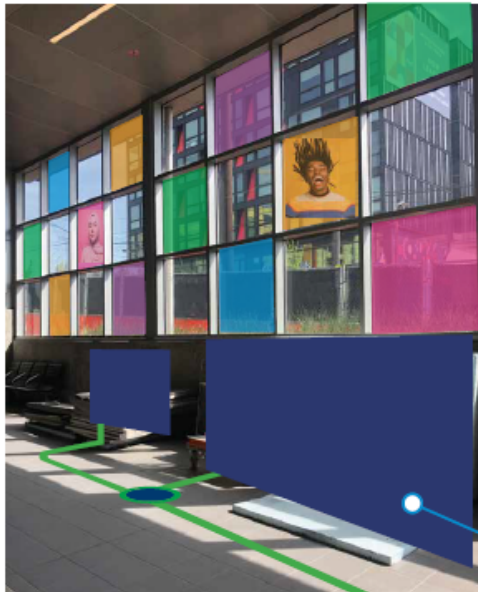


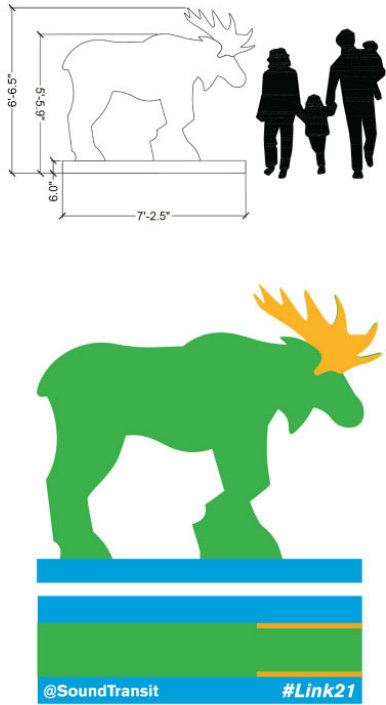
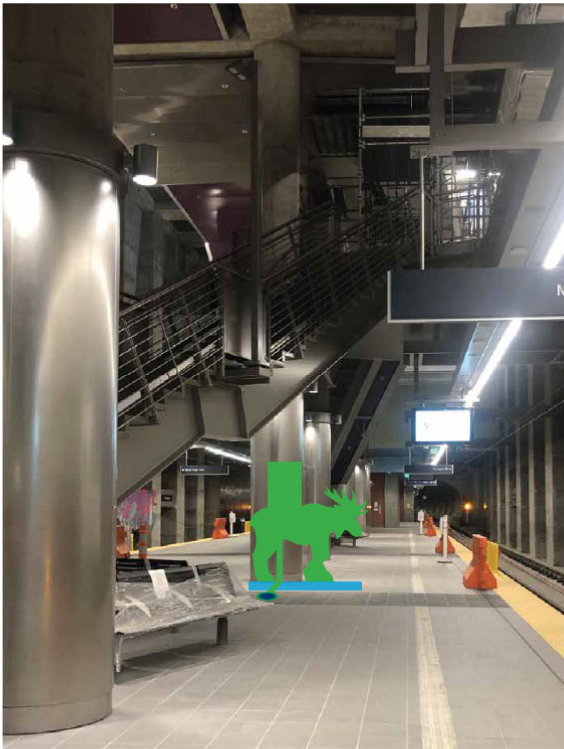
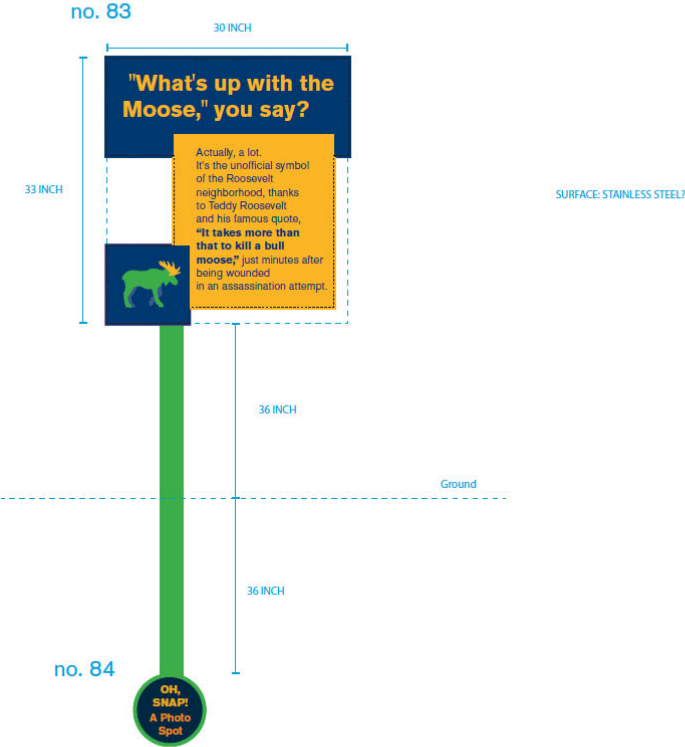
no. 91 - 94

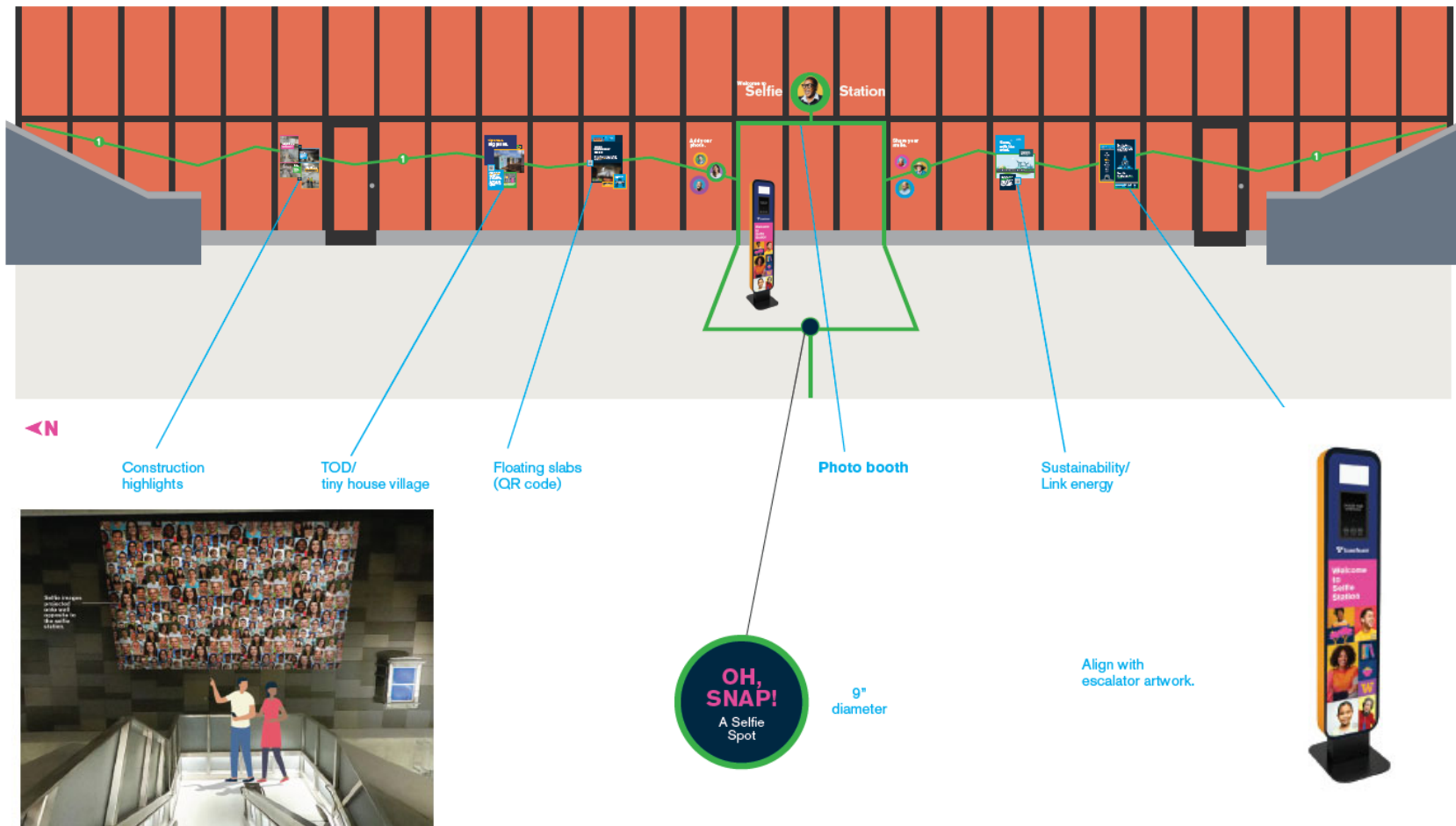


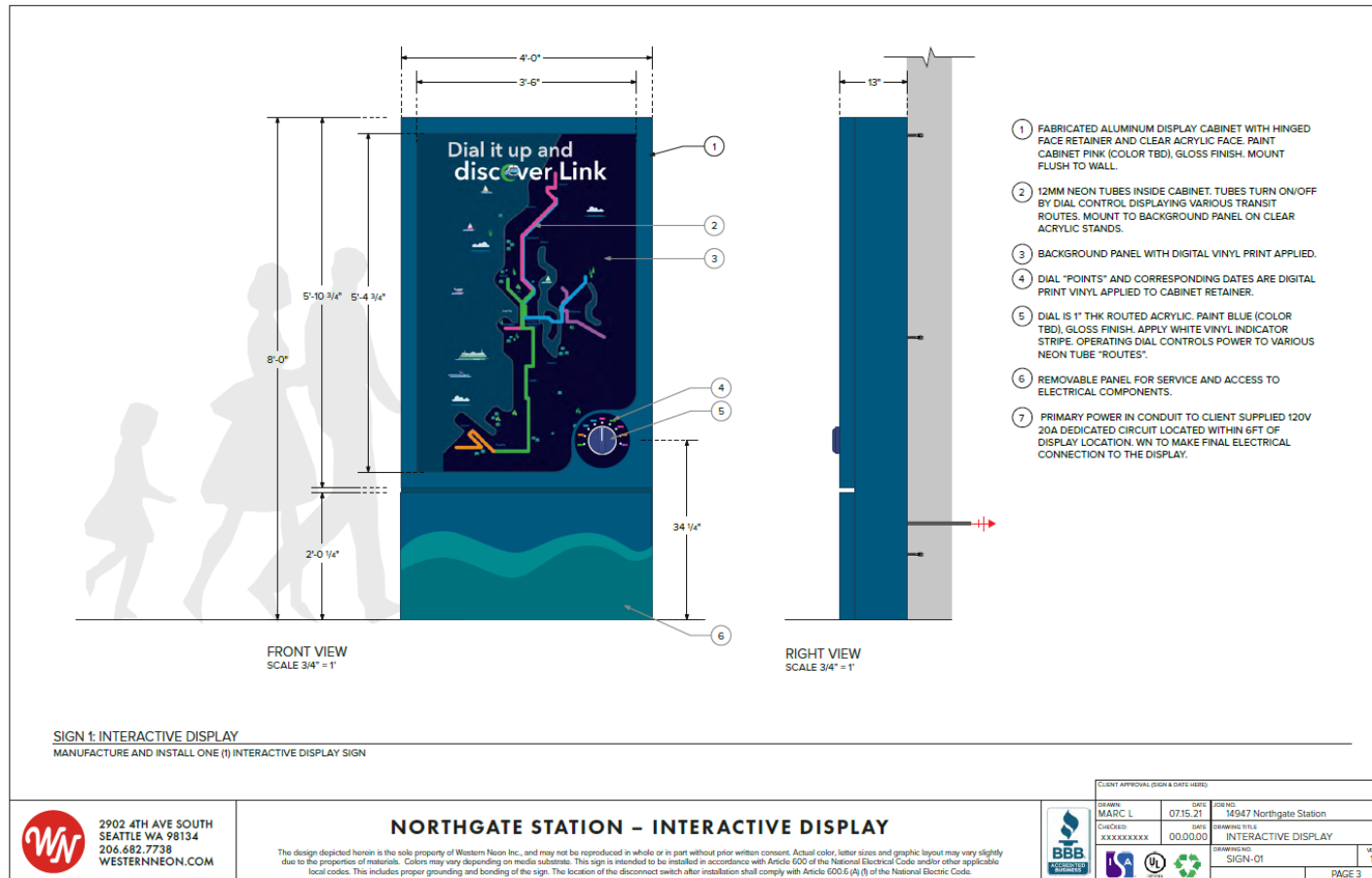


**South Entrance**  
3d Welcome piece









*Thank you.*



 *soundtransit.org*



*Thank you.*



 *soundtransit.org*

