

# *Lynnwood Link Extension Project Update*

*Citizen Oversight Panel*

*4/21/21*

# *Introductions*

## *Today's Presenters*

- **Randy Harlow**  
*Executive Project Director, Lynnwood Link Extension*
- **Abel Pacheco**  
*Government and Community Relations Manager, Central Corridor*
- **Erik Ashlie-Vinke**  
*Government and Community Relations Manager, North Corridor*
- **Megan McIntyre**  
*Deputy Project Director, Lynnwood Link Extension*
- **Andrea Burnett**  
*Community Engagement Manager, North Corridor*

# ***Before We Begin***

## ***The impacts of COVID-19 have yet to be fully determined***

- Effects on construction progress, timeline and schedules
- Additional safety measures implemented to protect construction workforce
- Sound Transit revenue projections given economic outlook
- Sound Transit Board review of the capital program portfolio underway

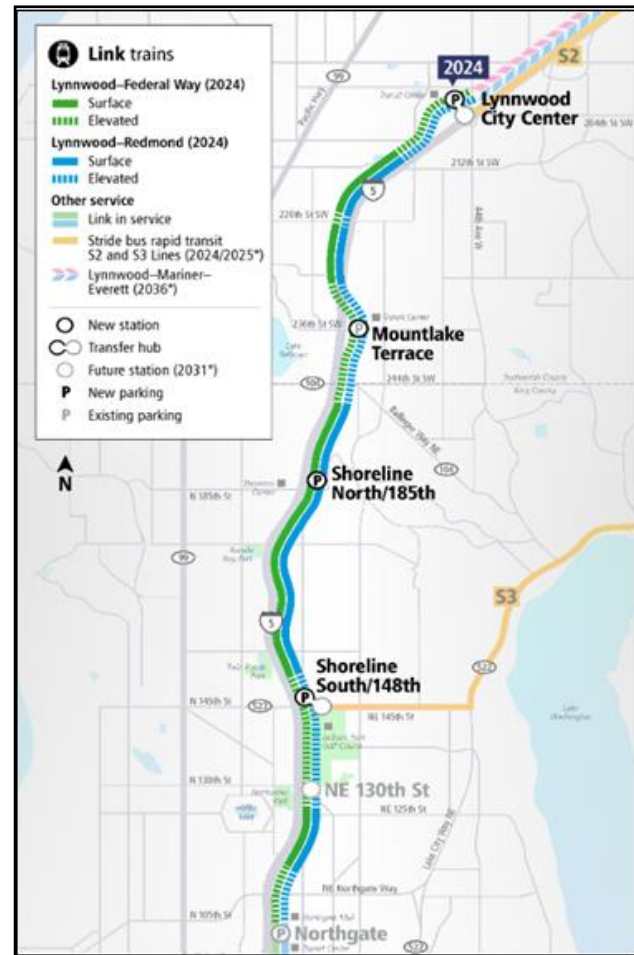
# *Lynnwood Link Extension Project Update*

- General Project Status
- Stakeholder Engagement
- Construction Activities
- Community Outreach During Construction
- Q&A

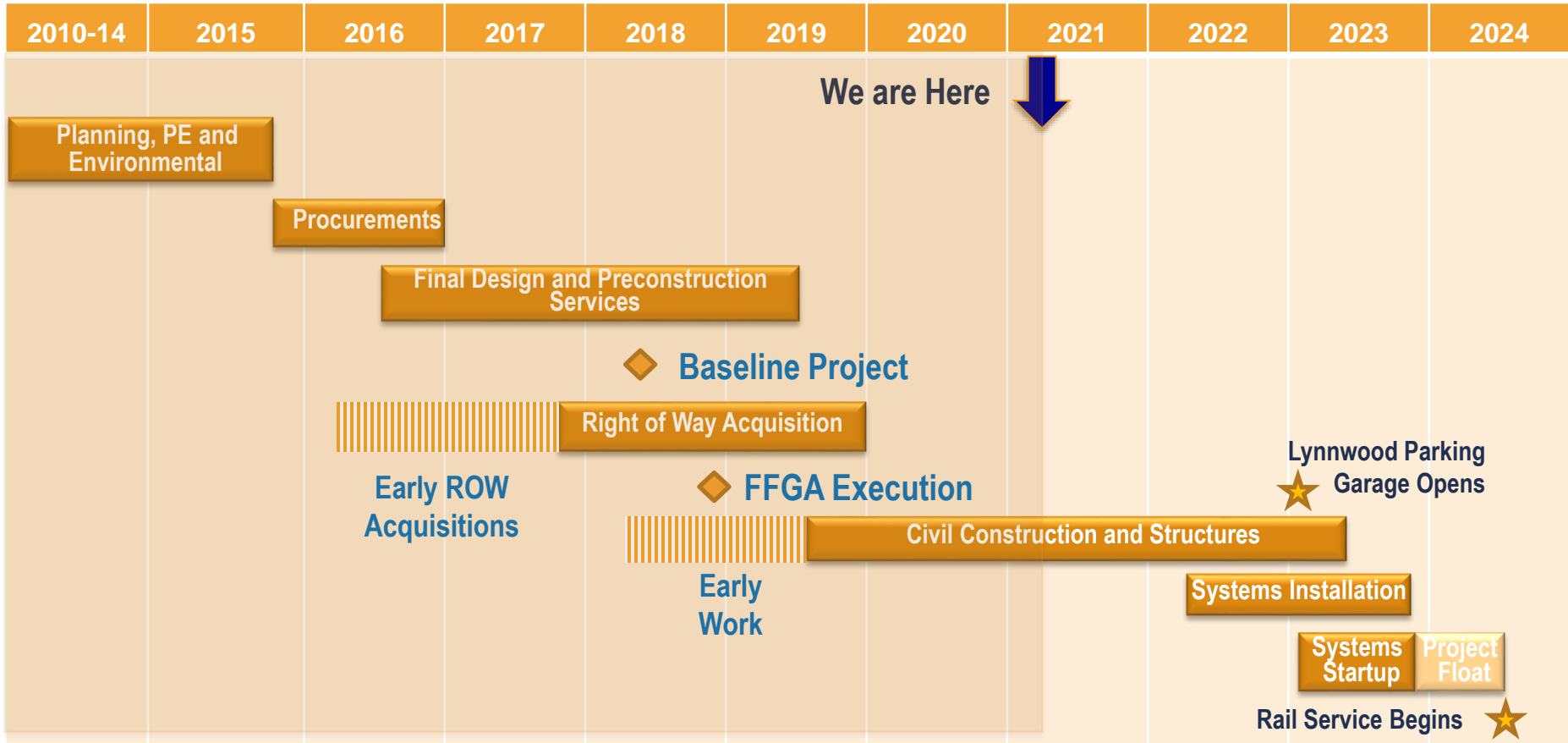


# Lynnwood Link Extension

- 8.5 miles fully-exclusive extension from Northgate to Lynnwood with 4 stations
- 1,500 added stalls of park-and-ride capacity (30% increase in the corridor)
- Lynnwood to Downtown Seattle: 28 minutes
- Four-minute headways during peak hours



# Baseline Schedule



# Current Status

## Cost Summary by Phase

Project Phase	Baseline Budget	Authorized Project Allocation	Commitment to Date	Incurred to Date	Estimated Final Cost (EFC)
Administration	\$98.2	\$98.2	\$45.7	\$45.5	\$98.2
Preliminary Engineering	\$39.1	\$39.1	\$39.1	\$39.1	\$39.1
Final Design	\$164.2	\$164.2	\$142.0	\$127.7	\$164.2
Construction Services	\$128.4	\$128.4	\$110.8	\$52.4	\$128.4
3rd Party Agreements	\$14.6	\$17.6	\$11.6	\$10.0	\$17.6
Construction	\$1,921.4	\$2,094.6	\$1,899.2	\$677.3	\$2,094.6
Light Rail Vehicles	\$0.0	\$0.0	\$0.0	\$0.0	\$0.0
ROW	\$235.7	\$229.7	\$183.1	\$168.8	\$229.7
Project Contingency	\$170.2	\$0.0	\$0.0	\$0.0	\$0.0
<b>Total</b>	<b>\$2,771.6</b>	<b>\$2,771.6</b>	<b>\$2,431.4</b>	<b>\$1,120.7</b>	<b>\$2,771.6</b>

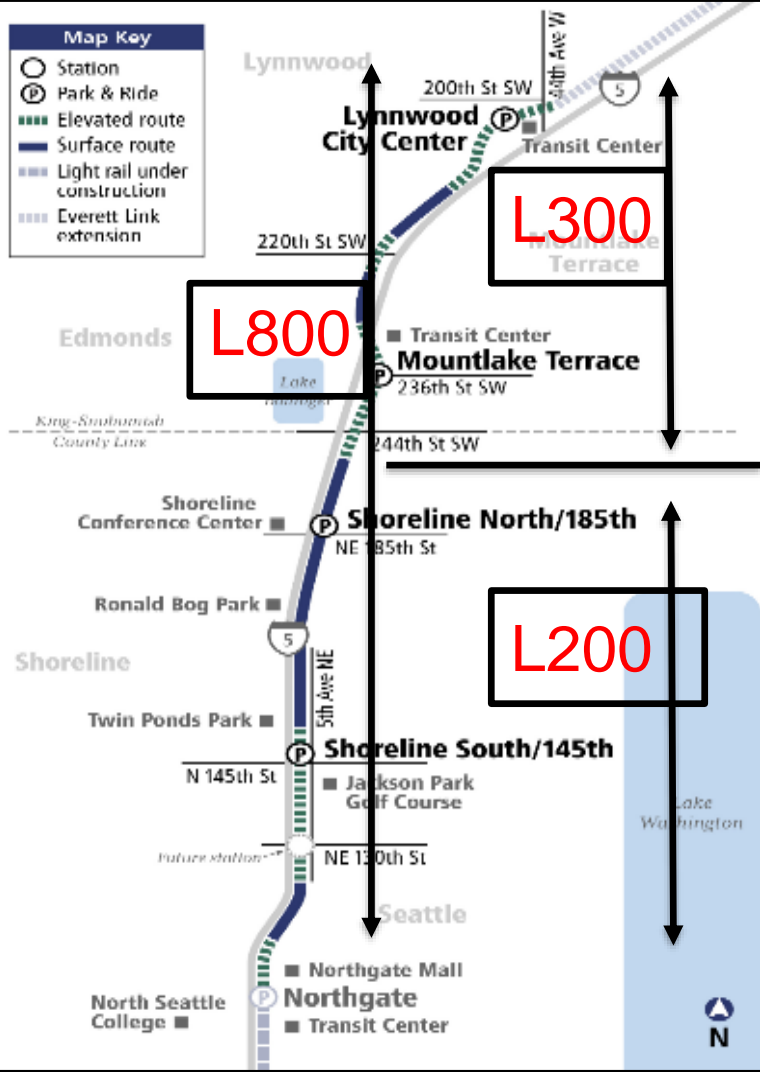
*\*Above-listed costs shown as-of Feb. 2021, in millions of year-of-expenditure dollars.*

## Budget Status

- All major contracts have been awarded; construction is 36% complete.
- 40% of the project baseline budget has been spent, including design and right-of-way costs.
- The Estimated Final Cost is within the baseline budget.

## Top Cost Risks

- Utility relocation cost, including underground electrical power.
- Construction change orders due to design modification.



# Major Construction Contract Packages Underway

- L200 Civil – Stacy & Witbeck/Kiewit/Hoffman  
*Northgate Station to NE 200<sup>th</sup> Street*
- L300 Civil – Skanska Constructors L300  
*NE 200<sup>th</sup> Street to Lynnwood Station*
- L800 Systems – Mass Electric
- Traction Power
  - Communications
  - Train Control



# Stakeholder Engagement

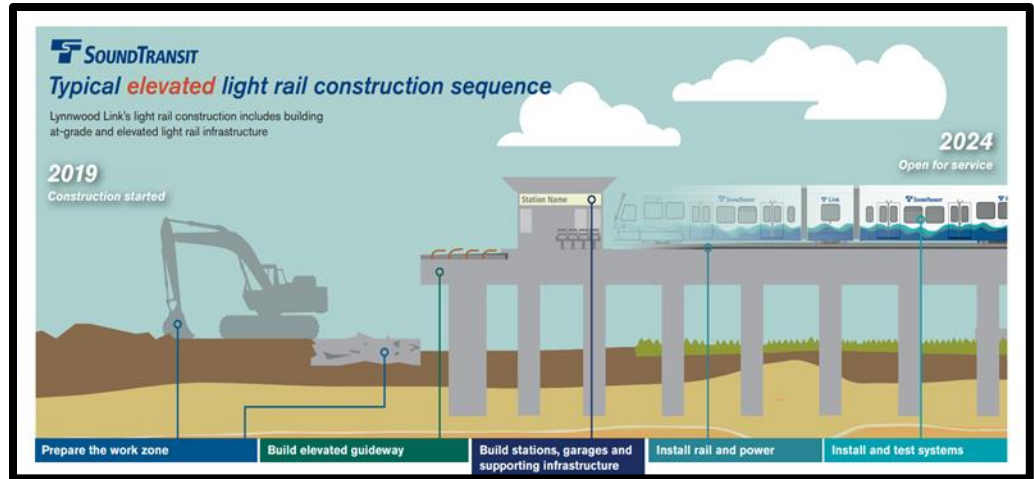
Jurisdictional Partner	Meeting Frequency
City of Seattle Executive Level City of Shoreline Executive Level City of Mountlake Terrace Executive Level City of Lynnwood Executive Level	Monthly Bi-weekly Monthly Monthly
WSDOT / Construction Team WSDOT Executive Level	Bi-Weekly Quarterly
Seattle City Light (SCL) Other Affected Utilities	Weekly As Needed
Fire, Life Safety, and Security Committee (FLSSC)	Quarterly
Community Transit (CT) King County Metro (KCM)	Bi-weekly As Needed

# *Construction Activities*

# Completed Construction Activities

## Milestones Since the 2019 Presentation

- ~36% Construction Complete
- Clearing and Grubbing
- Access Roads
- Utility Relocations
- Drilled Shafts
- Mass Excavation



# Early Construction

- Access Road Construction
- Utility Relocations



# Completed Construction Activities



Temporary Park & Ride Lot and Bus Loop at 59th Place in Mountlake Terrace



Scriber Creek Trestle in Lynwood



# Current Construction Activities

## *Happening Now*

- Columns
- Girders
- Walls
- Trackwork
- I-5 Crossing
- Stations
- Parking Garages



# Current Construction - Columns



Removing Steel Forms for  
Column and Bent Cap in  
Seattle at 112th St and 1st  
Avenue East of I-5



Guideway Columns at  
Mountlake Terrace  
Station site



Columns West of I-5  
Looking South in  
Mountlake Terrace at St  
Albion Way

# Current Construction – Girders



Guideway North of  
Northgate Station and  
East of I-5 at N 115<sup>th</sup>  
Street



Setting Girders at  
Shoreline South /  
148<sup>th</sup> Station



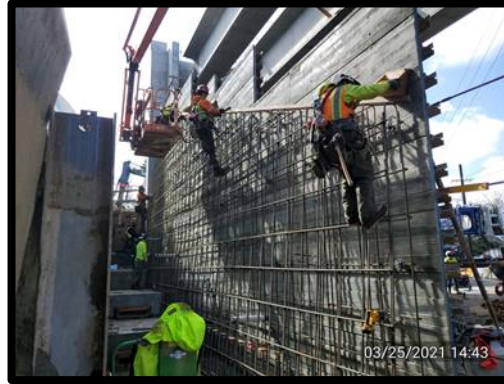
Girder Installation of  
236<sup>th</sup> St SW East of  
I-5 at Mountlake  
Terrace Station



# Current Construction - Walls



Placing Concrete for a Shear Wall at the Lynnwood Station Garage



Rebar placement for Wall in Lynnwood



Placing Rebar for Wall in Mountlake Terrace

# Current Construction – I-5 Crossing



Rebar Placed for I-5  
Overcrossing Stem  
Walls



Formwork Placement in  
Progress Across I-5



Bridge Overhang Decking  
over I-5 Facing North

# Current Construction - Stations



Shoreline South / 148<sup>th</sup>  
Station



Aerial View of the  
Mountlake Terrace  
Station site



Aerial View of Lynnwood  
Station and Parking  
Garage



# Current Construction - Parking Garages



Progress on Fourth  
Level of Shoreline South  
/ 148th Parking Garage



Concrete Placement for  
Columns at Lynnwood  
Station Garage



Concrete Deck Placement at  
Shoreline 148th Station  
Garage

# Future Activities 2Q 21 - 4Q 24

## Planned 2Q 2021-2023

- Columns
- Girders
- Walls
- Trackwork
- Bridges
- Stations / Parking Garages
- Systems Installation

Service Begins mid-2024



***Community Outreach  
During Construction***

# Good Neighbor Commitments

Sound Transit is committed to being a good neighbor during construction. We work to manage impacts on surrounding communities by:

- Providing timely information
- Maintaining a safe construction site
- Keeping people moving
- Protecting the environment
- Maintaining a 24-hour Construction Hotline
- Outreach staff onsite, in the field



# *Staying informed and engaged*

- **Subscribe** to construction alerts at [soundtransit.org/subscribe](https://soundtransit.org/subscribe)
- **Contact** Community Outreach staff:
  - My Nguyen (Seattle & Shoreline): [My.Nguyen@soundtransit.org](mailto:My.Nguyen@soundtransit.org) or 206-370-5690
  - Andrea Burnett (Mountlake Terrace & Lynnwood): [Andrea.Burnett@soundtransit.org](mailto:Andrea.Burnett@soundtransit.org) or 206-903-7522
- **Call** the 24-hour Construction Hotline for issues that require immediate attention after normal business hours
  - 1-888-298-2395



Thank you.

*Thank you.*



 [soundtransit.org](https://www.soundtransit.org)



# Current Construction – Bridges and Abutments



Bridge in Mountlake Terrace  
east of I-5



Placing Rebar for  
Longspan Bridge over I-  
5 in Mountlake Terrace



Bridge Adjacent to I-5 Near  
NE 130<sup>th</sup> Street and 5<sup>th</sup>  
Avenue NE in Seattle