

# ***NE 130<sup>th</sup> Street Infill Station Project Update***

*Citizen Oversight Panel  
October 20, 2021*



# ***Introductions***

## ***Today's Presenters***

- **Randy Harlow**  
*Executive Project Director, Lynnwood Link Extension / NE 130<sup>th</sup>*
- **Abel Pacheco**  
*Government and Community Relations Manager, Central Corridor*
- **My Nguyen**  
*Community Engagement Specialist, North Corridor*
- **Taylor Carroll**  
*Senior Project Manager, North Corridor*

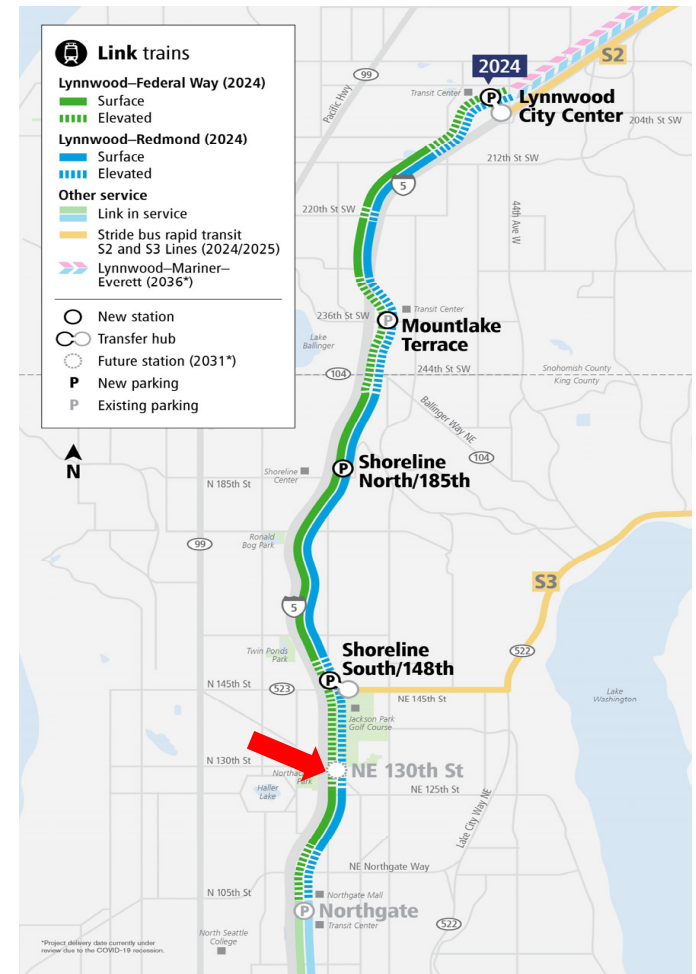
# *NE 130<sup>th</sup> Street Infill Station Project Update*

- General Project Status
- Stakeholder Engagement
- Construction Activities
- Community Outreach
- Q&A



# NE 130<sup>th</sup> Street Infill Station

- Elevated side-platform infill station included in ST3 plan along the Lynnwood Link Extension alignment
- When completed, will represent the northernmost station within the City of Seattle
  - 15 minutes to Westlake Station
  - 53 minutes to SeaTac / Airport
- Shift to Tier 1 during realignment adjusted delivery schedule from 2031 to 2025
- Will add approximately 3,400 daily boardings





# Current Status

Cost Summary by Phase

Project Phase	Authorized Project Allocation	Commitment to Date	Incurred to Date	Estimated Final Cost (EFC)	Authorized Allocation vs. EFC
Administration	\$3.6	\$1.7	\$1.7	\$3.6	\$0.0
Preliminary Engineering	\$2.7	\$2.7	\$2.7	\$2.7	\$0.0
Final Design	\$10.8	\$7.8	\$7.2	\$10.8	\$0.0
Construction Services	\$2.1	\$1.6	\$1.0	\$2.1	\$0.0
3rd Party Agreements	\$1.0	\$0.7	\$0.4	\$0.9	\$0.0
Construction	\$8.5	\$5.4	\$3.0	\$8.5	\$0.0
ROW	\$0.2	\$0.0	\$0.0	\$0.2	\$0.0
Project Contingency	\$0.0	\$0.0	\$0.0	\$0.0	\$0.0
<b>Total</b>	<b>\$28.9</b>	<b>\$20.0</b>	<b>\$16.0</b>	<b>\$28.9</b>	<b>\$0.0</b>

*\*Above-listed costs shown as-of Aug. 2021, in millions of year-of-expenditure dollars.*

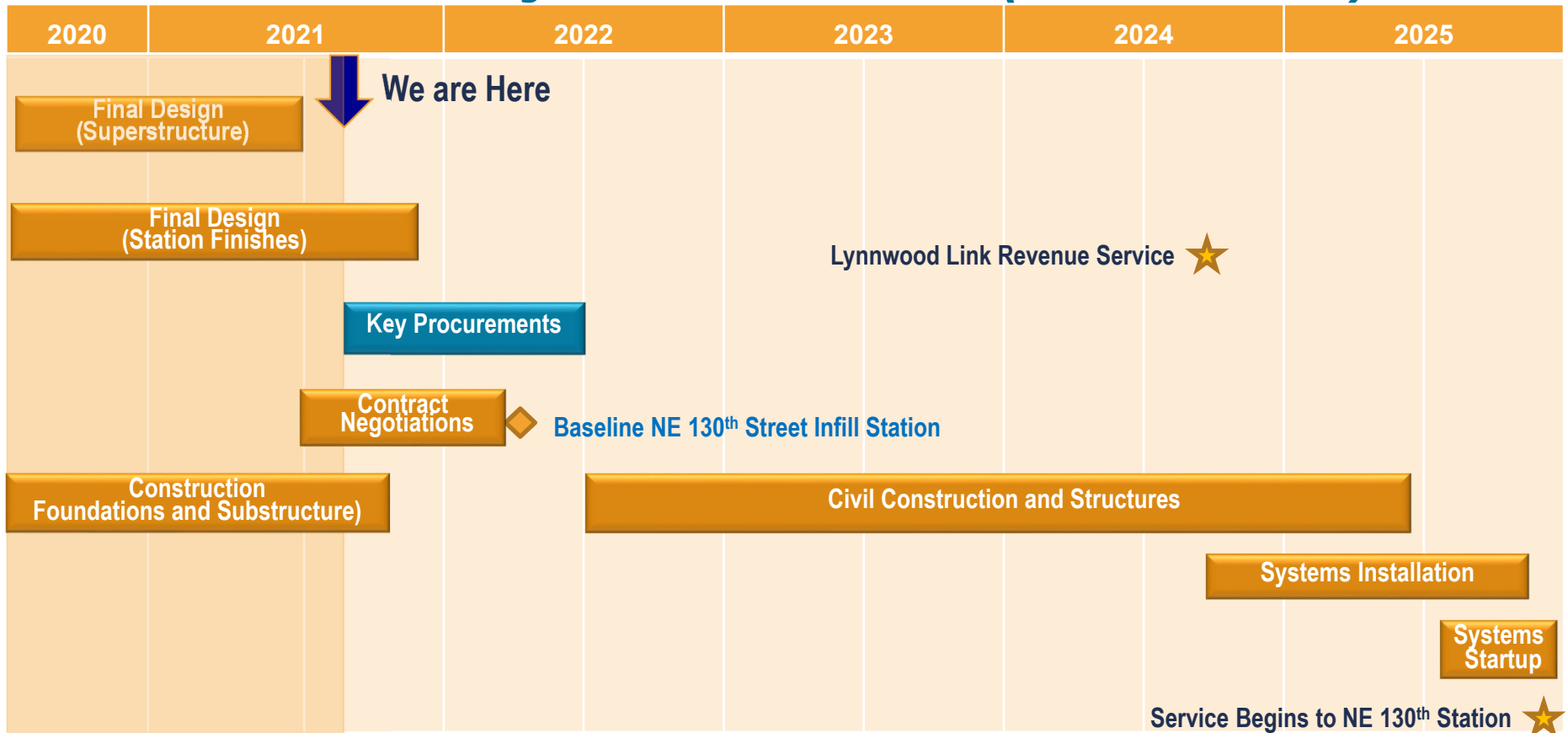
## Budget Status

- Work is underway as part of a limited funding authorization supporting initial phase construction and completion of final design.
- 55% of the project authorization has been spent, including design and initial phase construction costs.

## Top Cost Risks

- Costs of remaining construction contract change orders to complete the station for service.
- Addition of right-of-way improvements adjacent to improve station access.

# Forecast Project Schedule (2020-2025)



# Stakeholder Engagement

Jurisdictional Partner	Meeting Frequency
City of Seattle Executive Level Seattle Department of Transportation (SDOT)	Monthly Weekly Design Coordination
Seattle City Light (SCL) Other Affected Utilities	Weekly As Needed
WSDOT / Construction Team WSDOT Executive Level	Bi-Weekly Quarterly
Fire, Life Safety, and Security Committee (FLSSC)	Quarterly
King County Metro (KCM)	As Needed

# *Construction Activities*

## ***Initial Work– Integrated Substructure***

### ***Construction currently underway by Lynnwood Link***

- On-schedule, within approved construction-phase budget
- Late 2021 target for completion of revised substructure (foundations and guideway), integrated with Lynnwood Link



# Current Construction Activities

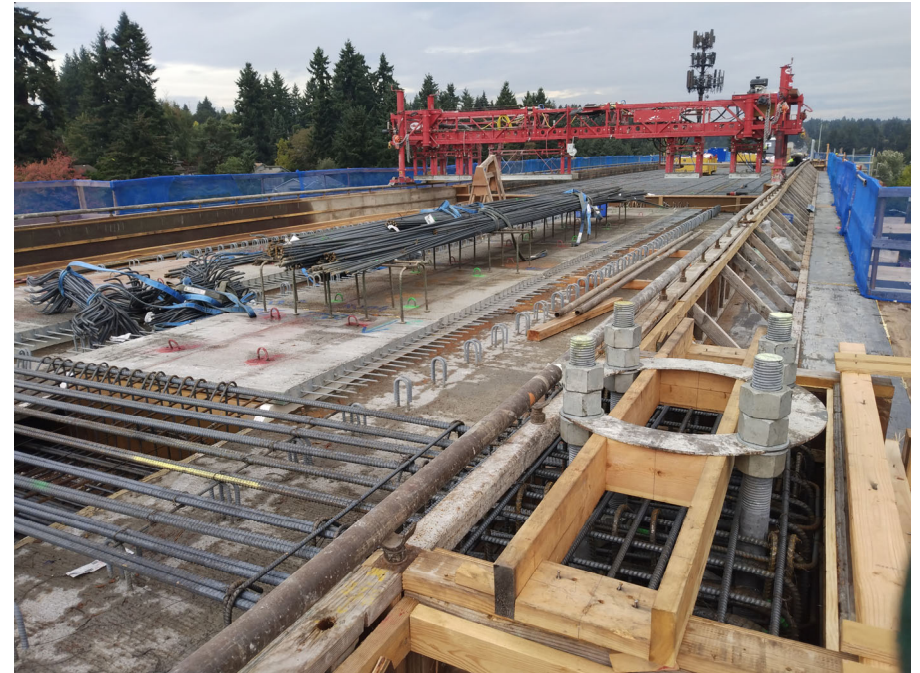
## *Happening Now*

- Second-stage pier caps
- Guideway deck
- Trackwork





# *Integrated Substructure Construction*



# *Future Activities 2Q 22 - 4Q 25*

## Planned 2022-2023

- Trackwork
- Platform girders and structure
- Canopy structural steel

## Planned 2023-2025

- Platform finishes
- Vertical transportation
- Plaza buildings and finishes
- Systems installation



Service begins late 2025



***Community Outreach  
During Design and  
Construction***

# Community Demographics

## Bitter Lake Village

1.1 mile / 21 min walk from station

## Lake City

1.7 mile / 27 min walk from station

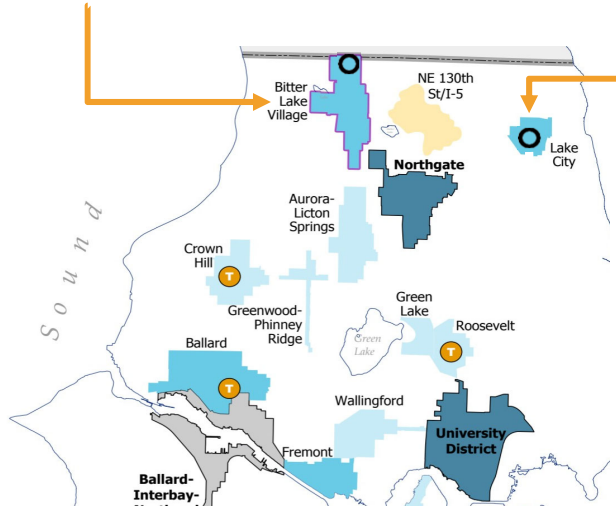


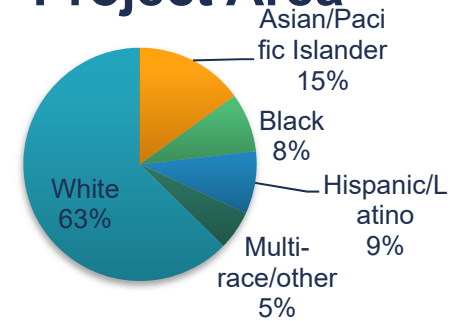
Figure courtesy of Office of Planning & Community Development:: Comprehensive Plan 2019

**Demographic Research<sup>1</sup>** – Based on research and outreach to the community, Sound Transit translates project materials into:

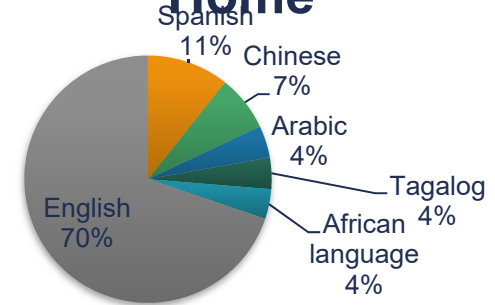
- Spanish
- Simplified Chinese
- Arabic
- Amharic
- Somali
- Tagalog
- Urdu

<sup>1</sup> = Based on findings by the American Community Survey (2017) and the US Census Bureau

## Demographics of the Project Area



## Languages Spoken at Home



# *Community Outreach*

## **Goal: Inform and consult general public**

- Postcard direct mailing to 26,000 residents and businesses
- Project updates via the LLE project listserv, partner organizations
- Share updates, paid advertisement, encourage email sign ups, online open house, email, social media, postcards and flyers
- Reach out to community/business organizations to distribute information and gather input

# Community Outreach

**Seattle/Shoreline Open House – Feb 26, 2019**

**Seattle Station area planning workshop – Mar 13; Sept 28, 2019**

**Seattle Design Commission – Apr 16, 2020**

**Community/Business Organization outreach – Sep 21-Oct 9, 2020**

**Online Open House – Oct 12- Nov 30, 2020**

**Seattle Design Commission – May 20, 2021**

**Next Online/Open House – TBD (early 2022)**



# Community-Based Organizations

**Target communities: Latinx, Ethiopian, Somali, Chinese, Arab, Pakistani, Eritrean**  
**Community partner organizations:**

Organization/Communities	Email alerts	Translated folios	Other
District 5 Neighborhood Council*	✓	✓	
Refugee Women Alliances	✓	✓	Staff who speak the language on site as well
Hunger Intervention Lake City**		✓	Ad with food distributed
Somali Community Service of Seattle	✓	✓	
Cascade Bicyclist Club	✓	✓	
Sound Generation/Lake City Seniors		✓	Featured in monthly newspaper. Ad also distributed with food to seniors.
Identified area of high traffic for diverse communities***		✓	

\* = Neighborhoods include Aurora Licton, Bitter Lake, Broadview, Cedar Park, Greenwood, Haller Lake, Lake City, Licton Springs, Little Brook, Maple Leaf, Matthews Beach, Meadowbrook, North Park, Northgate, Olympic Hills, Pinehurst, Victory Heights, Wedgewood

\*\* = Works with senior citizens, low income families and Latinx, Chinese, and Arab communities

\*\*\* = Al Farooq Masjid, Umer Farooq Masjid Lake Ballinger, Islamic Center of North Seattle, Taftan Bazaar & Halal Meat, Asian Family Market Seattle

# Community Outreach - Media

## Ethnic media outlets

**The Seattle Medium**

*A Message From The People... To The People*



**tú Decides**  
*You Decide - A Bilingual Newspaper*

# Community Outreach - Media

## Sample ads

Más servicio de tren ligero para el norte de Seattle

Sound Transit Aprenda más

La Raza

© 2020, La Raza del Noroeste and Sound Publishing, Inc.  
Boletines · About Us · Terms of Use · Privacy Policy · Contact Us

時西報 SEATTLE CHINESE TIMES

更多Link輕軌服務 將來到北西雅圖區域

Sound Transit 點擊詳情

焦點 電子報紙 NEW 即時新聞 社區新聞 西城工商 E食住行 生活副刊 ENGLISH 線上商店

**tú Decides**  
You Decide - A Bilingual Newspaper

Advertise with us! Call us at (509)591-0495 or toll free at (866)317-7796, email info@TuDecidesMedia.com

Welcome to tu Decides bilingual newspaper

What makes our newspaper unique? We are reaching the community through English and Spanish. As a bilingual newspaper, we realize that our readers come from many different backgrounds. Each one has their own personal tastes when it comes to getting their news.

Our publication is distributed free of charge every Friday. We recognize that the future is here and that more readers are now reading newspapers in a digital format so we are excited to have over 18,000 digital newspaper subscribers throughout Washington. You can also find printed copies in grocery stores, gas stations, restaurants, libraries, and of course online at [www.tudecidesmedia.com](http://www.tudecidesmedia.com).

Join the over 18,000 subscribers that receive our free digital newspaper by clicking here.

Share

Click here for PDF (Washington version)

**You decide**  
A Bilingual Newspaper

**Time on their hands**  
Pandemic's toll on parents and forces children back to work > 15

100% of our revenue goes to the community. We are a 501(c)(3) nonprofit organization.

100% of our revenue goes to the community. We are a 501(c)(3) nonprofit organization.

100% of our revenue goes to the community. We are a 501(c)(3) nonprofit organization.

Share

Click here for PDF (Washington version)

**tú Decides**  
You Decide - A Bilingual Newspaper

More light rail service for North Seattle

NE 130th Street light rail infill station project

Sound Transit Learn more

# Community Demographics

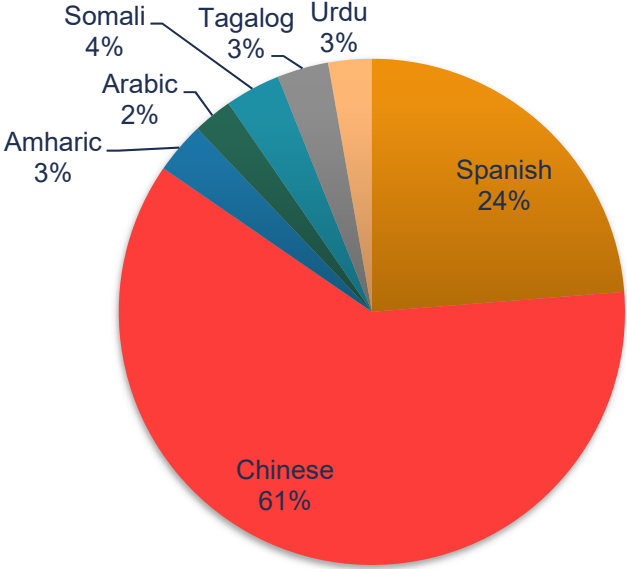
## Ethnic media outlets

- Tu Decides
- The Seattle Medium
- Seattle Chinese Times
- La Raza Del Noroeste

## Online open house participants

- 161 in-language site visitors

### In-language Site Visitors





# Good Neighbor Commitments

Sound Transit is committed to being a good neighbor during construction. We work to manage impacts on surrounding communities by:

- Providing timely information
- Maintaining a safe construction site
- Keeping people moving
- Protecting the environment
- Maintaining a 24-hour Construction Hotline
- Outreach staff onsite, in the field



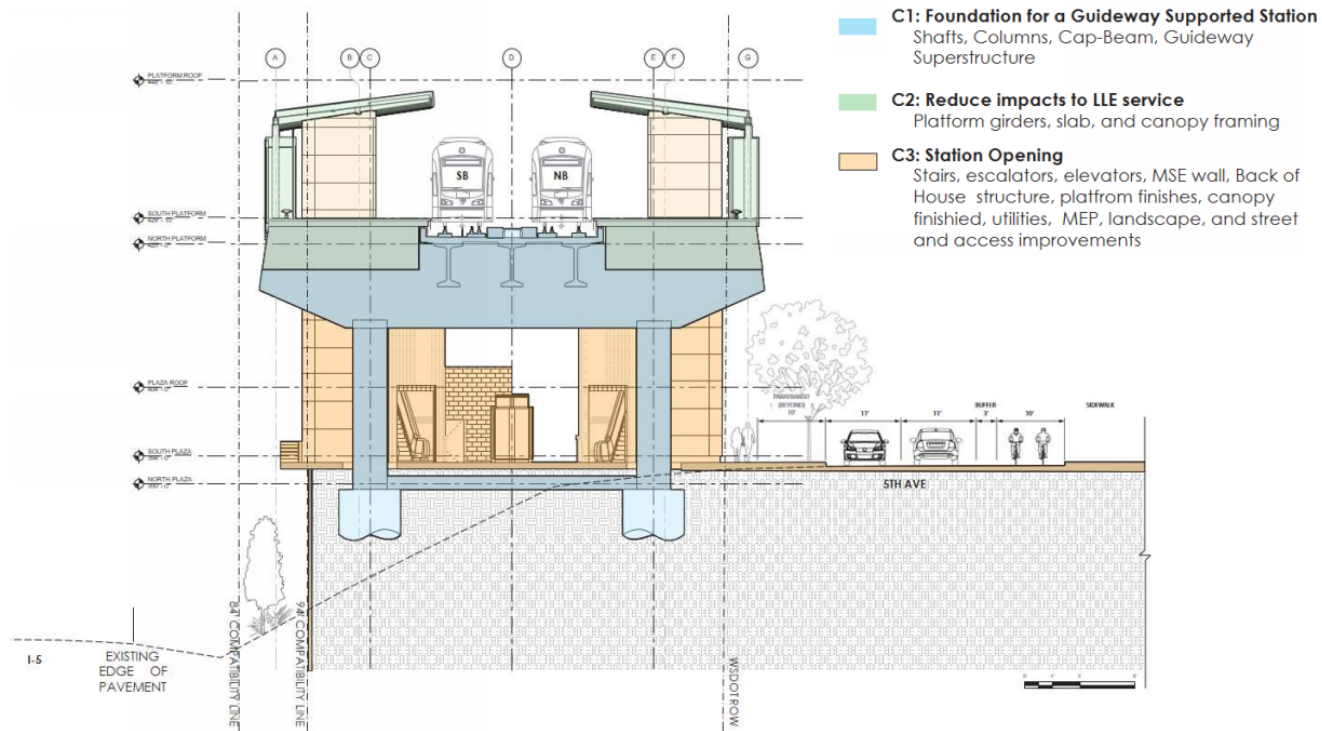
## *Staying informed and engaged*

- **Subscribe** to construction alerts at [soundtransit.org/subscribe](https://soundtransit.org/subscribe)
- **Contact** Community Outreach staff:
  - My Nguyen: [My.Nguyen@soundtransit.org](mailto:My.Nguyen@soundtransit.org) or 206-370-5690
- **Call** the 24-hour Construction Hotline for issues that require immediate attention after normal business hours
  - 1-888-298-2395

# ***Packaging and Delivery***

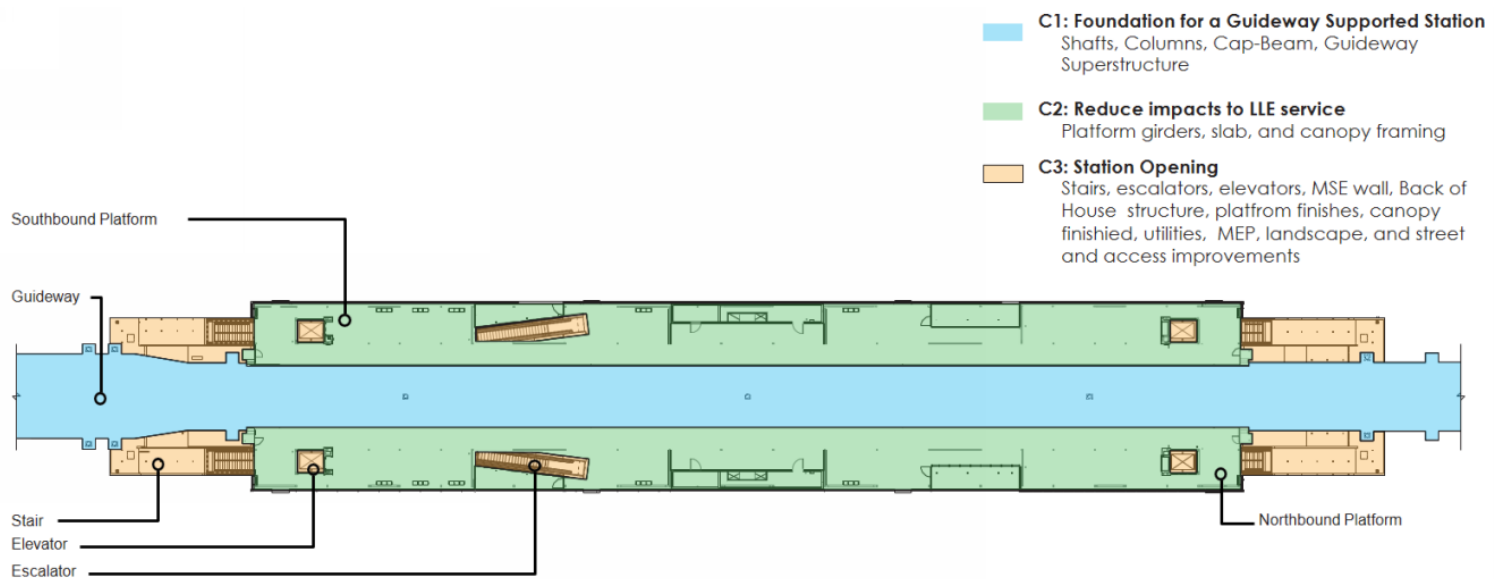
# Original Packaging Strategy

## Phased approvals to ensure affordability



# Original Packaging Strategy

*Phased approvals to ensure affordability*



# *Revised Packaging Strategy*

## *Realignment Decisions Allow a Simplified Approach*

- Advancing opening date to 2025 allows consolidation of the previous phased-approval approach into a single project approval
- With key procurement activities for girders and structural steel underway, a proposed baseline budget incorporating work to date and remaining construction work can be brought to the Board in early 2022



# Design Renderings – Completed Station





# Design Renderings – Completed Station



Site plan – plaza level





## *Design Renderings – Completed Station*



**Section View – South Lobby**

## *Design Renderings – Completed Station*



## *Design Renderings – Completed Station*



View from 5<sup>th</sup> Ave NE

## *Design Renderings – Completed Station*





## *Design Renderings – Completed Station*



# *Next Steps*

## ***Next Steps for the NE 130<sup>th</sup> Street Infill Station***

- Finalize design documents for the entire Station project
- Obtain third-party construction permits
- Negotiate final costs with the civil and systems contractors
- Finalize proposed project baseline cost and schedule
- Return to the Board in early 2022
- Conduct online Open House following Board approval
  - Prepare the community for additional construction activities
  - Solicit input on station naming

Thank you.

*Thank you.*



 [soundtransit.org](https://www.soundtransit.org)

