

***Operations & Maintenance  
Facility South  
Draft EIS***

***Citizen Oversight Panel***

***3/17/21***

# *Why we are here*

- Provide a summary of the OMF South Draft EIS findings
- Comment period March 5 – April 19
- Future Board decision on Preferred Alternative anticipated summer/ fall 2021

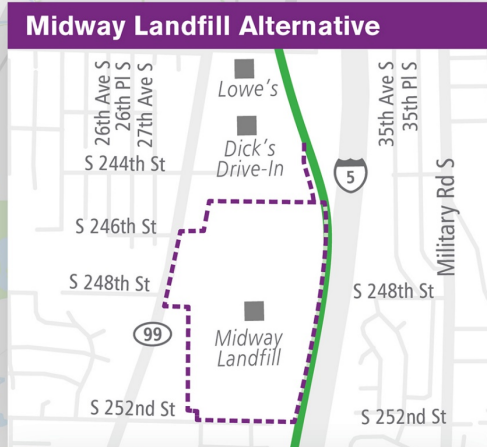
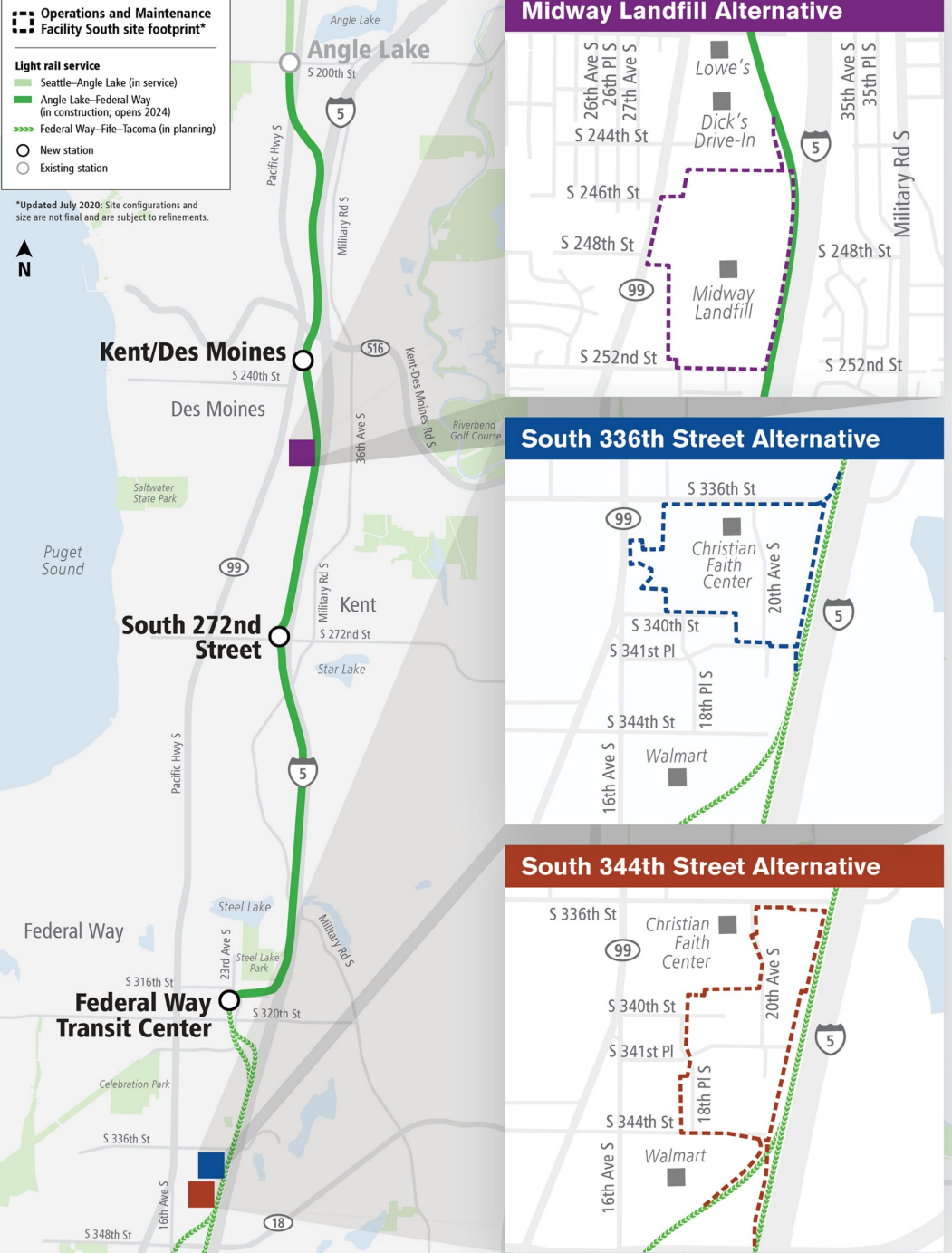
**Operations and Maintenance Facility South site footprint\***

**Light rail service**

- Seattle-Angle Lake (in service)
- Angle Lake-Federal Way (in construction; opens 2024)
- Federal Way-Fife-Tacoma (in planning)

○ New station  
○ Existing station

\*Updated July 2020: Site configurations and size are not final and are subject to refinements.



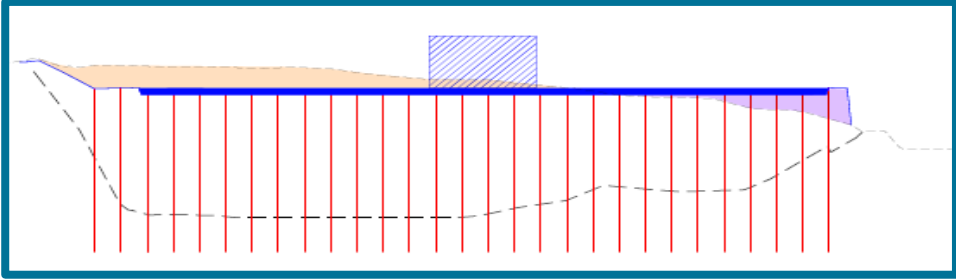
# Operations and Maintenance Facility South

- Serves system-wide needs
- Supports 144 light rail vehicles
- Provides ~470 living wage jobs

Three Alternative sites:

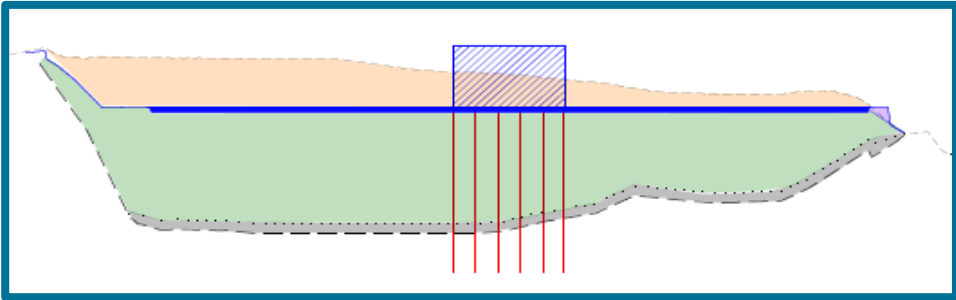
- **Midway Landfill** (Kent), includes 3 below ground design options
- **S. 336<sup>th</sup> St.** (Federal Way)
- **S. 344<sup>th</sup> St.** (Federal Way)

# Landfill Site Preparation Options – Overview



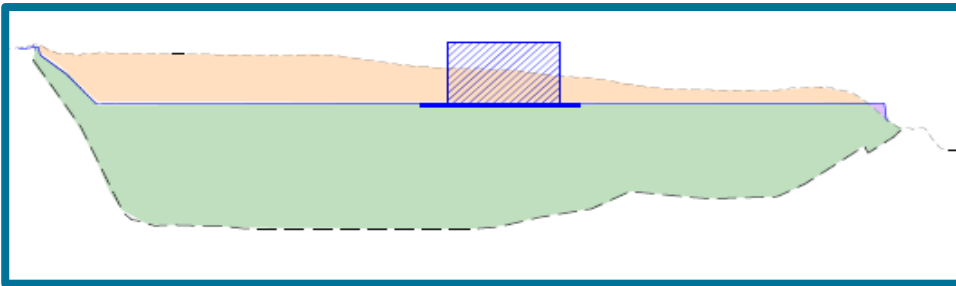
## Platform option

- Buildings and tracks supported by 3.5-foot-thick concrete platform (~35 acres) on ~700 drilled shafts at 120 – 180 feet deep



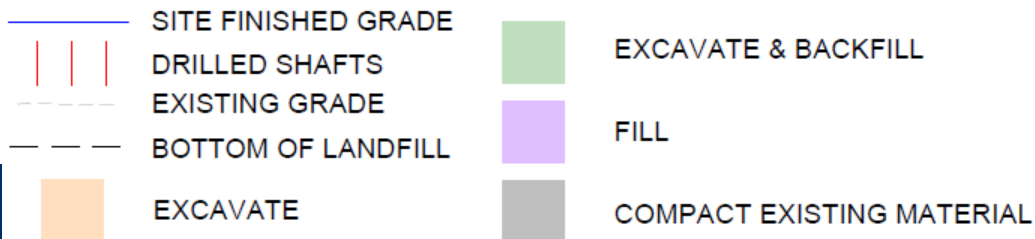
## Hybrid option

- Partial excavation, tracks supported by a 1-foot-thick concrete slab over 3-foot-thick beam system (~30 acres), buildings supported on ~110 drilled shafts at ~140 feet deep



## Full Excavation option

- Complete excavation/ replacement with reused and clean imported soil



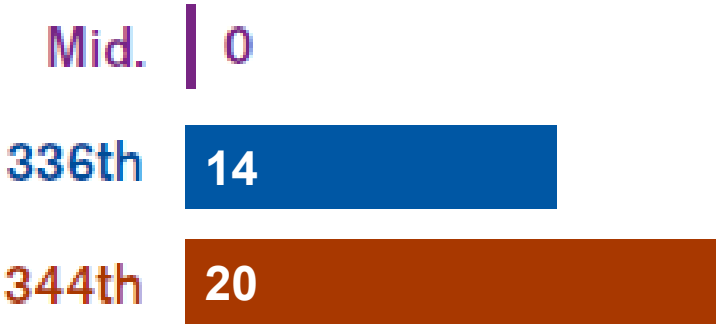
***Draft Environmental Impact Statement -  
Differentiating and Key Results***

# Comparison of Key Site Characteristics



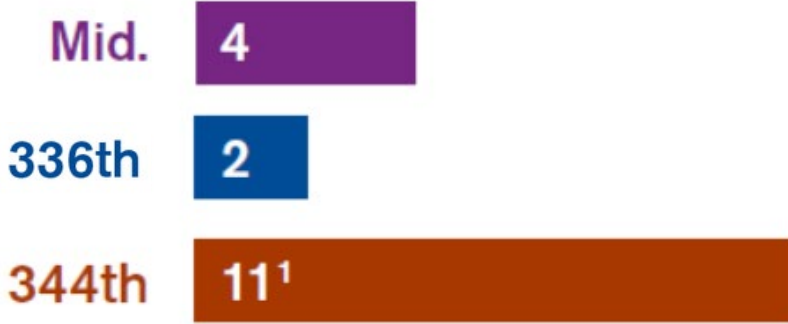
## Residential Displacements

(Units)



## Business Displacements

(Units)



# Comparison of Key Site Characteristics



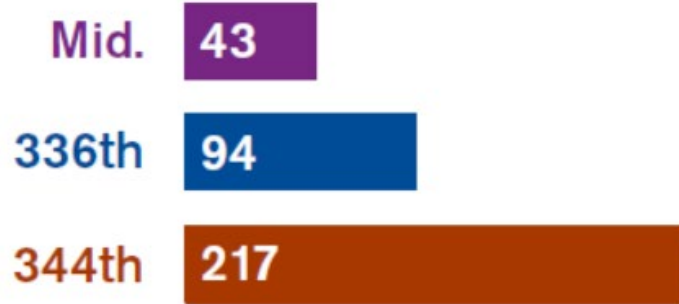
## Community and Social Resource Impacts

(Churches)



## Estimated Employee Displacements

(People)

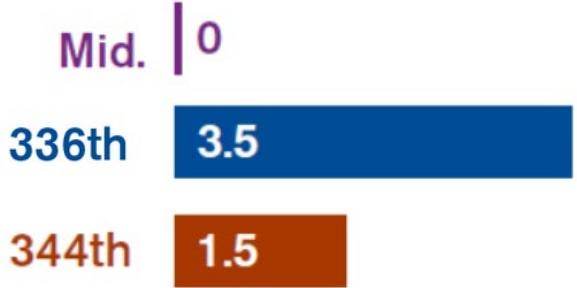


# Comparison of Key Site Characteristics



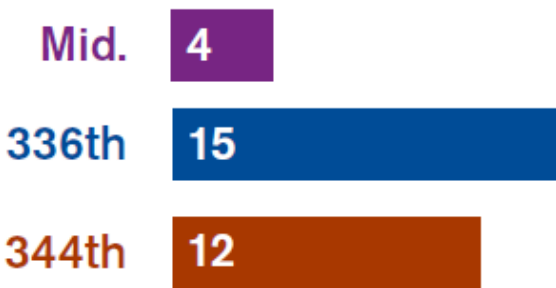
## Wetland Impacts

(Acres)



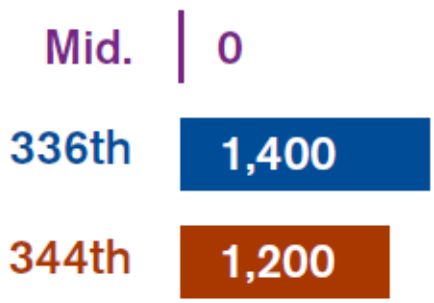
## Forest Impacts

(Acres)



## Stream Impacts

(Linear Feet)



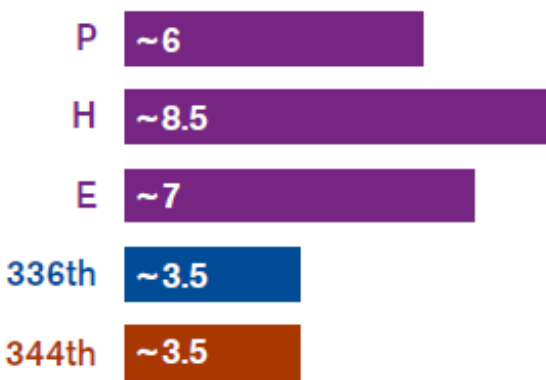


# Comparison of Key Site Characteristics



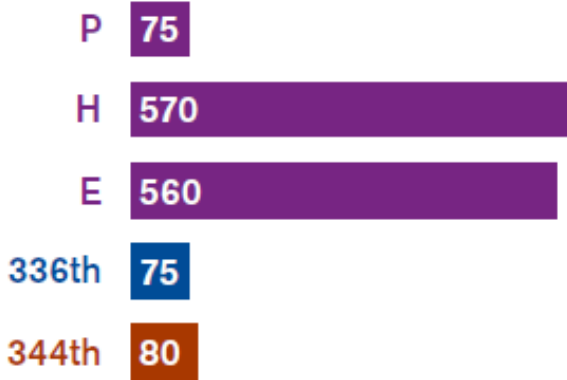
## Construction Duration

(Years)



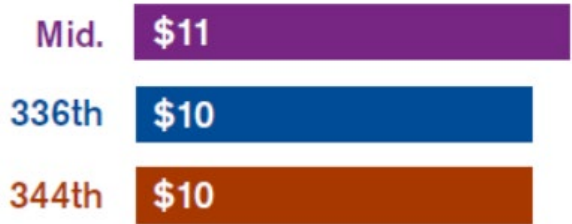
## Daily Construction Truck Trips

(Maximum Trips)



## Annual Operating Cost Estimate\*

(Millions)



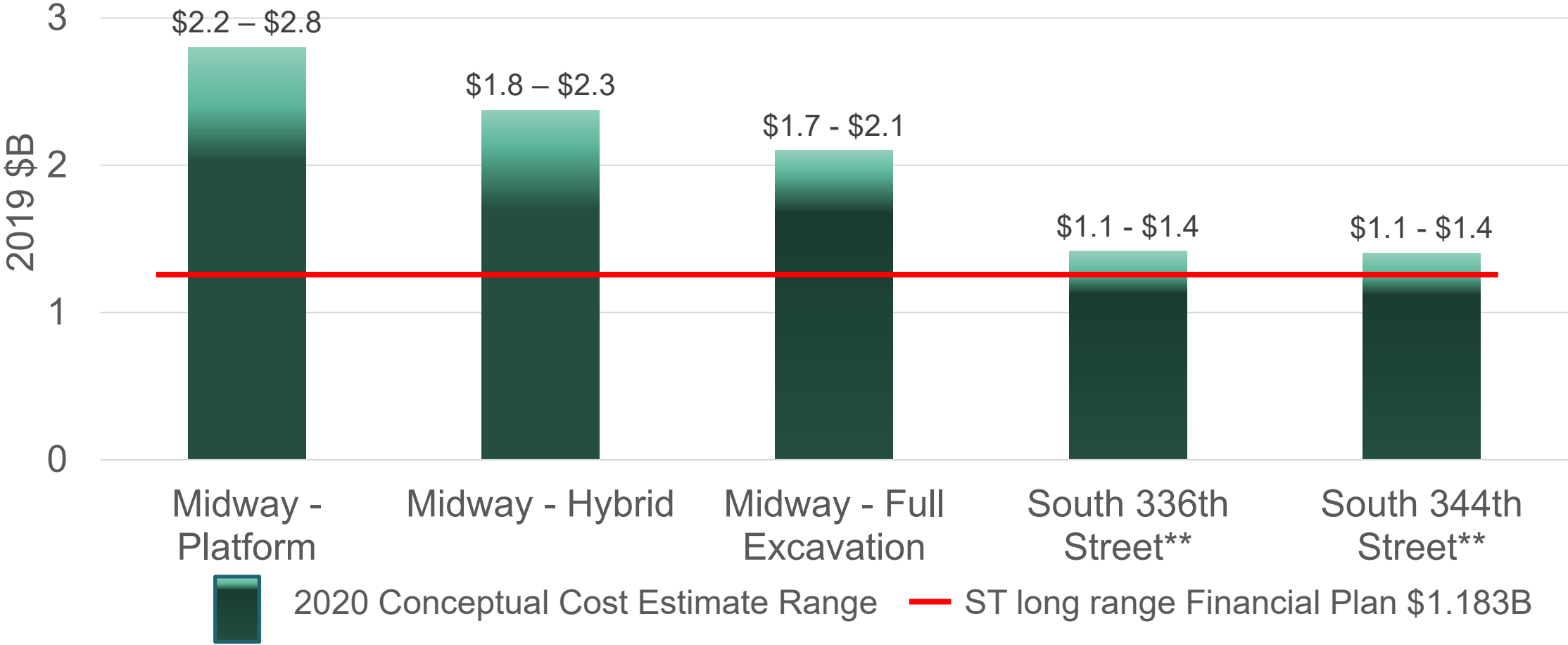
### Midway Landfill Construction Options

- P Platform
- H Hybrid
- E Full Excavation

Some results rounded from the Draft EIS.

\*These estimates are to be used for comparisons between alternatives only.

# Conceptual Cost Estimate\*



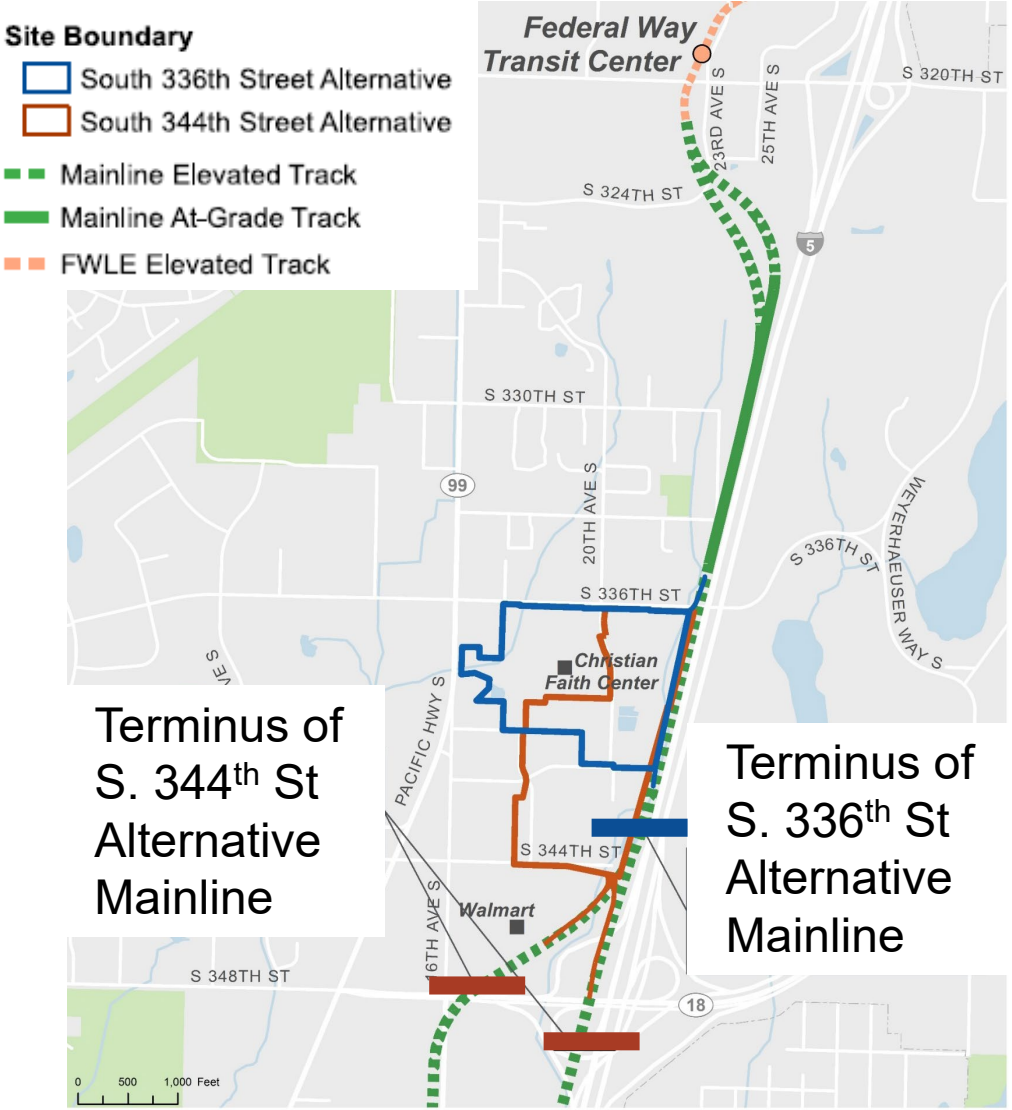
<sup>10</sup>\*Estimates are to be used for comparisons between alternatives only.

\*\*Site only. Does not include TDLE related cost for extension of mainline to sites in Federal Way

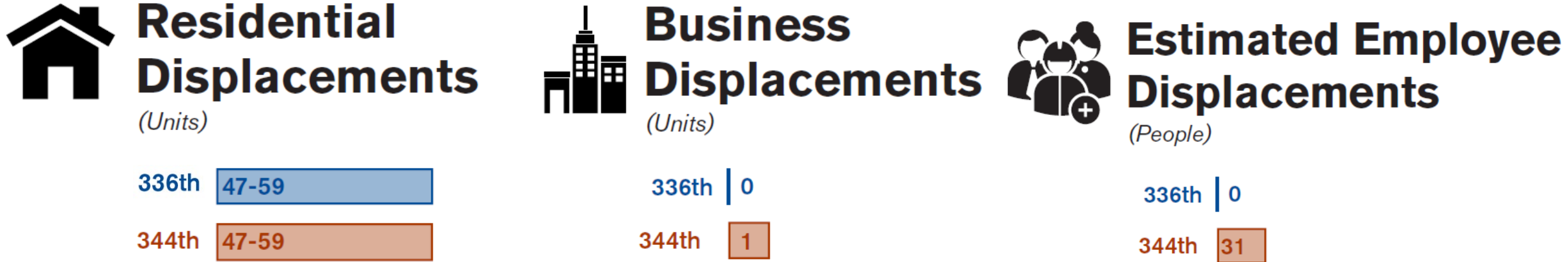


# Mainline track\* to Federal Way Alternatives

\*Mainline track to be built as part of TDLE regardless of which OMF South alternative is selected



# Comparison of Key Mainline Track Characteristics for Federal Way Sites\*



**\*Mainline track to be built as part of TDLE regardless of which OMF South alternative is selected**

# Comparison of Key Mainline Track Characteristics for Federal Way Sites\*



## Wetland Impacts

(Acres)

336th 1.5

344th 1.5



## Forest Impacts

(Acres)

336th 6

344th 10



## Stream Impacts

(Linear Feet)

336th 1,800

344th 1,700

**\*Mainline track to be built as part of TDLE regardless of which OMF South alternative is selected**

# *Public Outreach*

# *Draft EIS Comment Period*

- Official comment period for **SEPA** environmental review process
- 45-day extended **public comment period**, March 5 – April 19, 2021
- Seeking public, Tribal, agency and city **feedback on Draft EIS analysis**
  - Three site alternatives and a no-build alternative
  - Sound Transit will provide written responses to substantive comments in the Final EIS
- **Informs ST Board decision** to identify preferred alternative to be included in Final EIS

# Options to Participate and Comment

- **Online open house and comment form:** [omfsouth.participate.online](https://omfsouth.participate.online)
- **Online public meetings and hearings:** March 24 & March 30
- **Email:** [OMFSouthDEIS@soundtransit.org](mailto:OMFSouthDEIS@soundtransit.org)
- **Voicemail:** 206-257-2135
- **Mail comment to:** OMF South Project  
c/o Hussein Rehmat, Environmental Planner  
Sound Transit  
401 S. Jackson St. Seattle, WA 98104



# Notifications

- › Mailer
- › Email listserv
- › Press releases
- › Print and online ads
- › Property owner briefings
- › Community listening sessions
- › Website
- › Social media
- › SEPA Register



# OMF South Environmental Review Milestones\*

*Public participation throughout*

**March 2021**

**Summer/  
Fall 2021**

**Mid 2022**

**Mid/Late  
2022**

- 3/5 SEPA Draft EIS published
- 3/5 – 4/19 public comment period
- 3/24 & 3/30: online public meetings & hearings

ST Board identifies Preferred Alternative

Final EIS issued

ST Board selects project to be built

***Sound Transit Board decisions on realignment influenced by COVID -19 and increased estimates may change these dates***

*Thank you.*



 [soundtransit.org](https://www.soundtransit.org)

