

Safety Department

Citizen Oversight Panel presentation

July 21, 2021





Our goal

*Deliver a safe
passenger
experience*

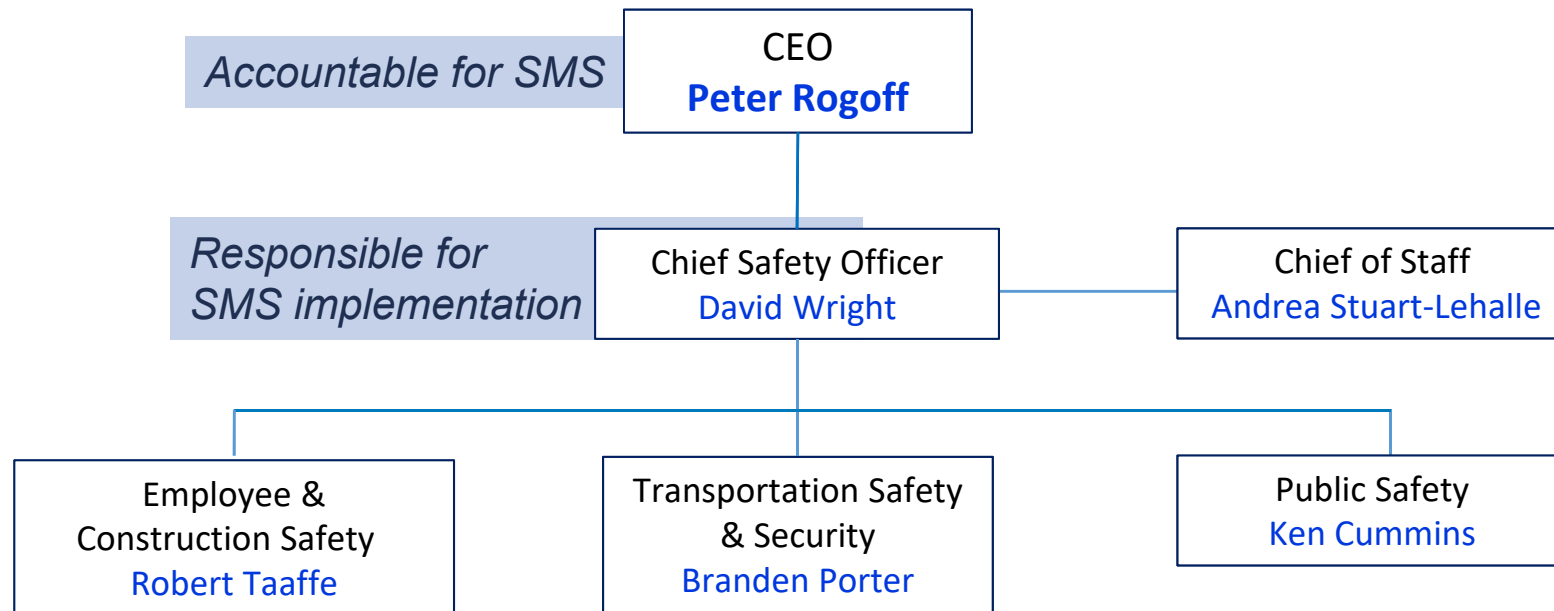
Today we'll review

- ***Design for growth organizational changes***
- ***2020 Passenger Experience Survey results***
- ***Public safety***
- ***Transportation Safety and Security***
- ***Risk mitigation - Point Defiance Bypass***
- ***COVID-19 safety response***
- ***Employee Health and Safety***
- ***Construction Safety***



Organizational change

Safety Department structure & divisions



A photograph of a person wearing a yellow cap, a black face mask, and a plaid shirt, standing at a transit station. They are holding an ORCA card to a yellow and blue card reader. The background shows a blurred station interior with other people and signs. The text "Passenger experience" is overlaid in white, italicized font.

Passenger experience

2020 Passenger Experience Survey

Activity #5 questions (Safety)

- How can Sound Transit can **improve feelings of personal safety** at our stations, platforms and bus stops?
- How can Sound Transit Security **better support passengers' journeys**?



2020 Passenger Experience Survey, cont.



Cleanliness
(48 mentions)

Feedback: Areas of passenger concern

- *Actions or behaviors of **other passengers***

- *Actions of **other people (non-passengers)***



Access
(20 mentions)

- **Conditions of transit facilities** and vehicles

- **ST Security/staff** presence



Lighting
(18 mentions)

- **COVID-19** measures

A photograph of a person from behind, wearing a dark uniform with a reflective strip at the bottom. The words "TRANSIT SECURITY" are printed in large, light-colored, bold letters across the back of the uniform. The person is holding a radio to their ear. The entire image has a blue tint. The text "Public safety" is overlaid in the center in a white, italicized font.

Public safety

2020 Security incidents

	2019	2020
Assault	75	126
Vandalism	981	1,253
Biohazard	2074	2,151
Medical	770	692
PSC/ Loitering	3928	5,013

** Red background indicates increase over 2019*

25,000 reported incidents

Insights:

- **Assaults** are most common crime against individuals
- **Assaults** very low in number
- **Biohazards and vandalism** spike in Q2 2020
- Most calls: **Passenger Safety Check/Loiterers**

Passenger safety highlights

COVID-19 response:

- **Mask distribution on vehicles, at stations, through partner agencies**
- **Communication to public**
- **Masks in every car (Sounder & Link)**
- **Signage & station announcements**
- **Clear protocol for interventions**
- **Federal mask mandate February 2021**
- **Current compliance averaging at 98%**





***Transportation Safety &
Security***

TSS: Centralizing Safety and Security Risk

Design



Safety and Security Certification

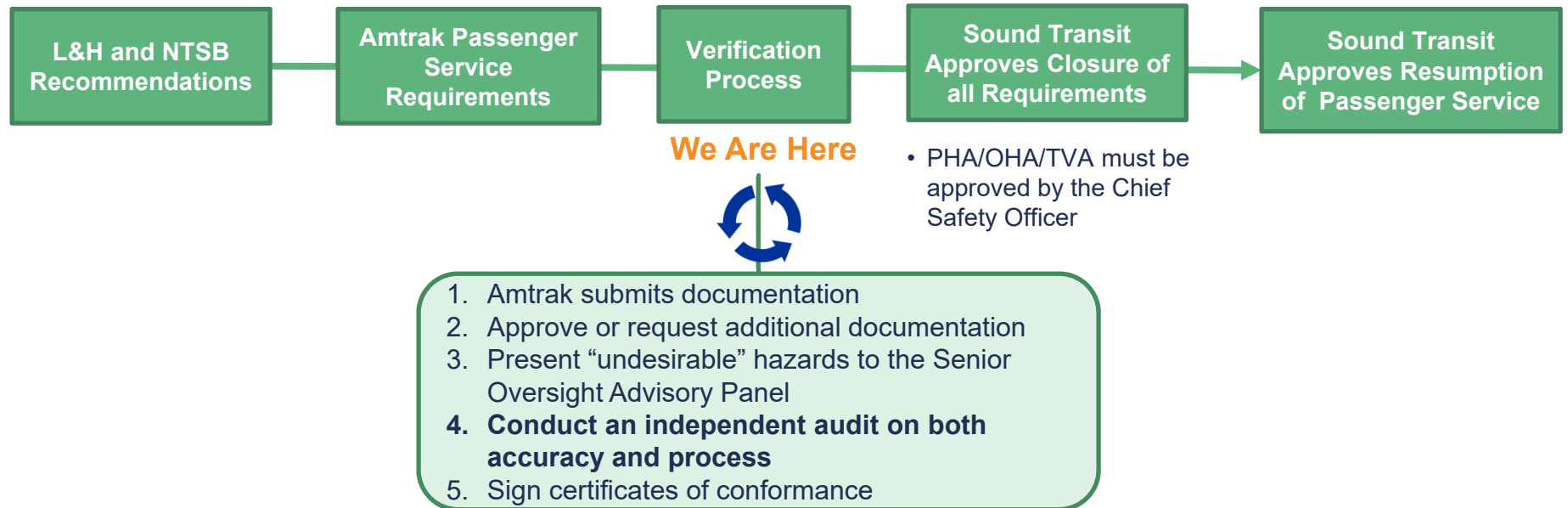


Operational Environment



PDB Safety Certification Process Overview

Safety drives review and approval of documentation and resumption of service



Point Defiance Bypass Safety Measures

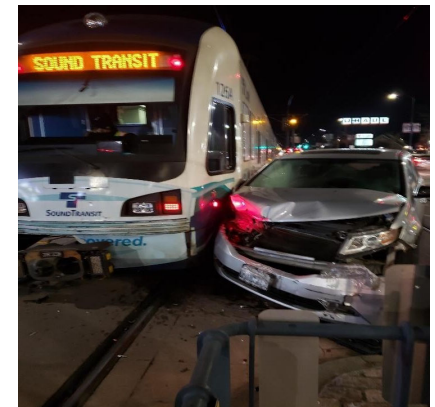
- *Positive train control (PTC)*
- *PTC cut-out protocol*
- *Step down speed*
- *Additional signage*
- *Crew focus zone*
- *Training enhancements*
- *Emergency responder training*



2020 Collision data

2019 comparative

(Service)	2019		2020	
	Pedestrian	Vehicle	Pedestrian	Vehicle
ST Express	2	14	4	10
Link	5	12	3	4
TLink	0	2	0	0
Souder	4	3	4	1

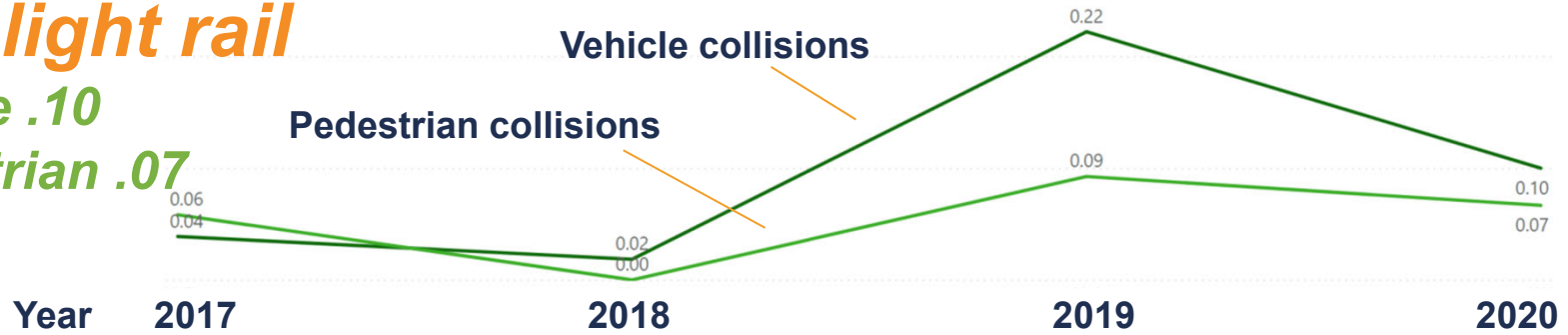


2020 Collisions, rate per 100,000 VRMs

Link light rail

Vehicle .10

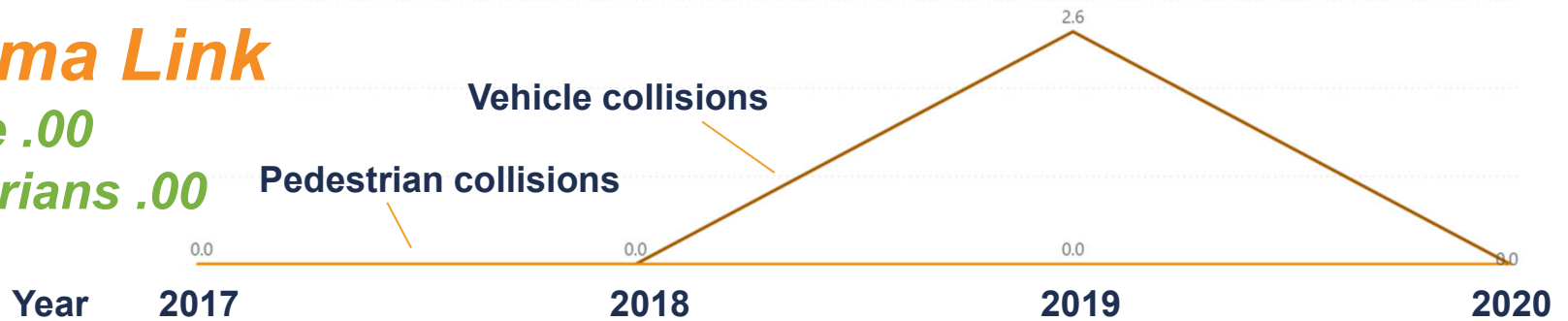
Pedestrian .07



Tacoma Link

Vehicle .00

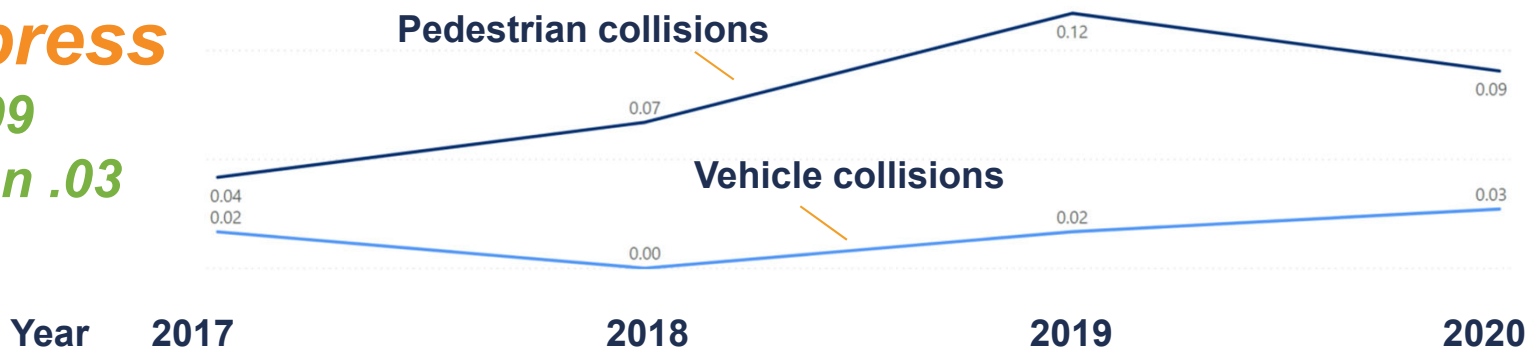
Pedestrians .00



2020 Collisions, rate per 100,000 VRMs

ST Express

Vehicle .09
Pedestrian .03



Sounder

Vehicle .07
Pedestrian .26



A photograph of construction workers at a site, overlaid with a blue tint. Two workers in the foreground are handling large coils of rebar. In the background, another worker is visible near a large circular rebar structure. The scene is set on a construction site with gravel and wooden forms.

***Employee and
Construction Safety***

Employee Safety COVID-19

2020 measures

- ***Approx. 91% of employees working remotely
(Only ~100 "essential worker" employees reporting)***
- ***Restricted campus access***
- ***Safety training required to access campus***

2021 additional measures

- ***Self-screen before entering***
- ***Back-to-Work safety protocols***
- ***Vaccination encouragement***

ST/Contractor COVID-19 Data

	2020	2021
Percentage of reported cases		
Sound Transit	1.6%	0.5%
Contractor staff	3.4%	1.9%
Tri-county area cases	165,000	10,400
Current COVID status		
Allowed office capacity	Essential only	Unrestricted
Face covering	Mandatory	Mandatory
Vaccines	Essential only	Supply available

2020 Construction Safety

COVID-19 management plans

- **Required all ST contractors to submit COVID-19 management plans.**
- **Plans reviewed and accepted with criteria derived from DOSH, L&I and CDC.**
- **Verified contractor training and availability of required hygiene stations, PPE and ability to maintain 6-ft. separation.**
- **Conducting field surveys to assess compliance with submitted plans.**
- **Construction trades and crafts eligible for vaccinations (March 31).**



Construction and Employee Safety Data

WA State and National comparative

	2019		2020	
	Sound Transit	Contractor	Sound Transit	Contractor
Recordable Injury Rate (RIR)				
	0.37	2.42	0.10	1.89
WA State	2.9	6.0	2.9	5.7
National	4.5	3.0	4.5	2.8
Lost Time Injuries				
	0.37	0.57	0.00	0.20
WA State	1.9	1.9	1.9	2.8
National	3.0	1.2	3.0	2.5

A blue-tinted image of a server room aisle. The floor is made of metal grates, and the walls are perforated metal. A person's face is superimposed on the floor in the center of the aisle. The word "Questions?" is written in white, italicized font across the center of the image.

Questions?

Thank you.



 [soundtransit.org](https://www.soundtransit.org)

