



# *Tacoma Dome Link Extension*

*Citizen Oversight Panel | 06.20.19*



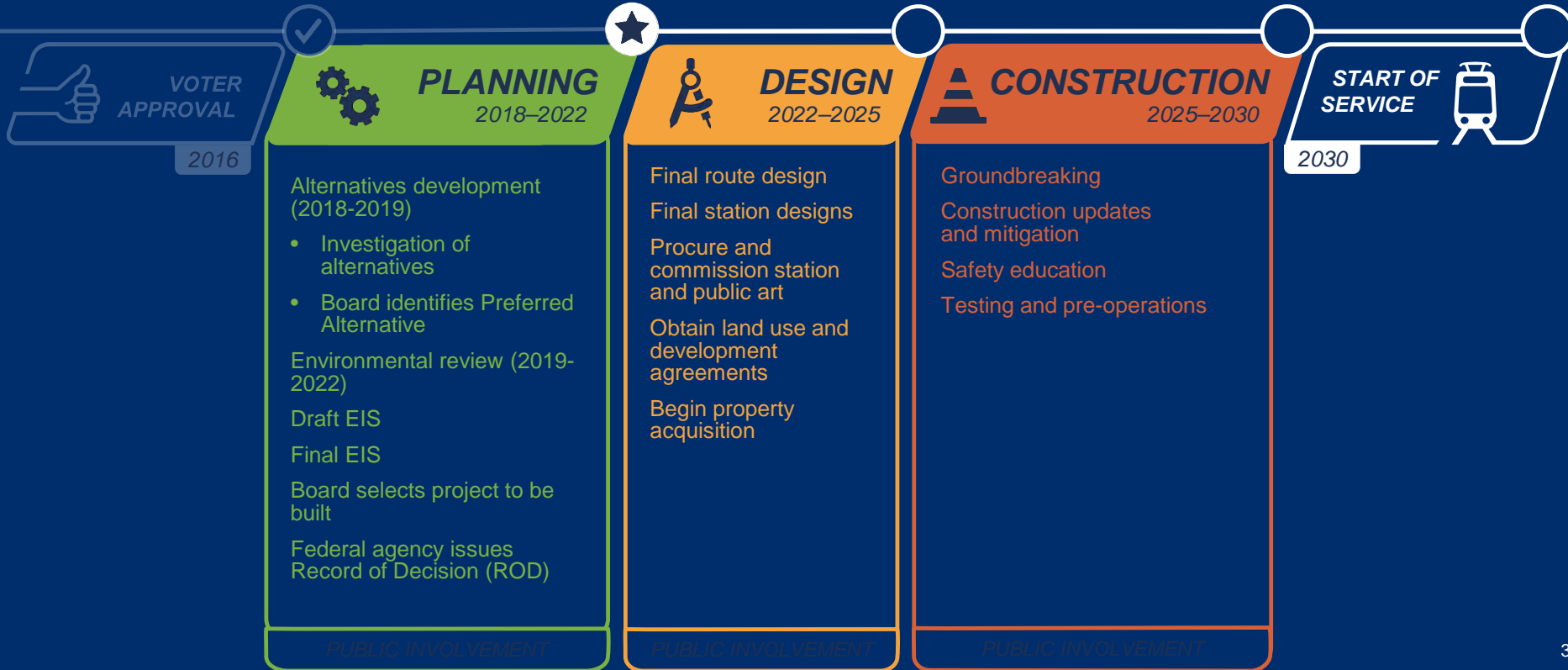
## Tacoma Dome Link Extension

# Tacoma Dome Link Extension: Representative Project

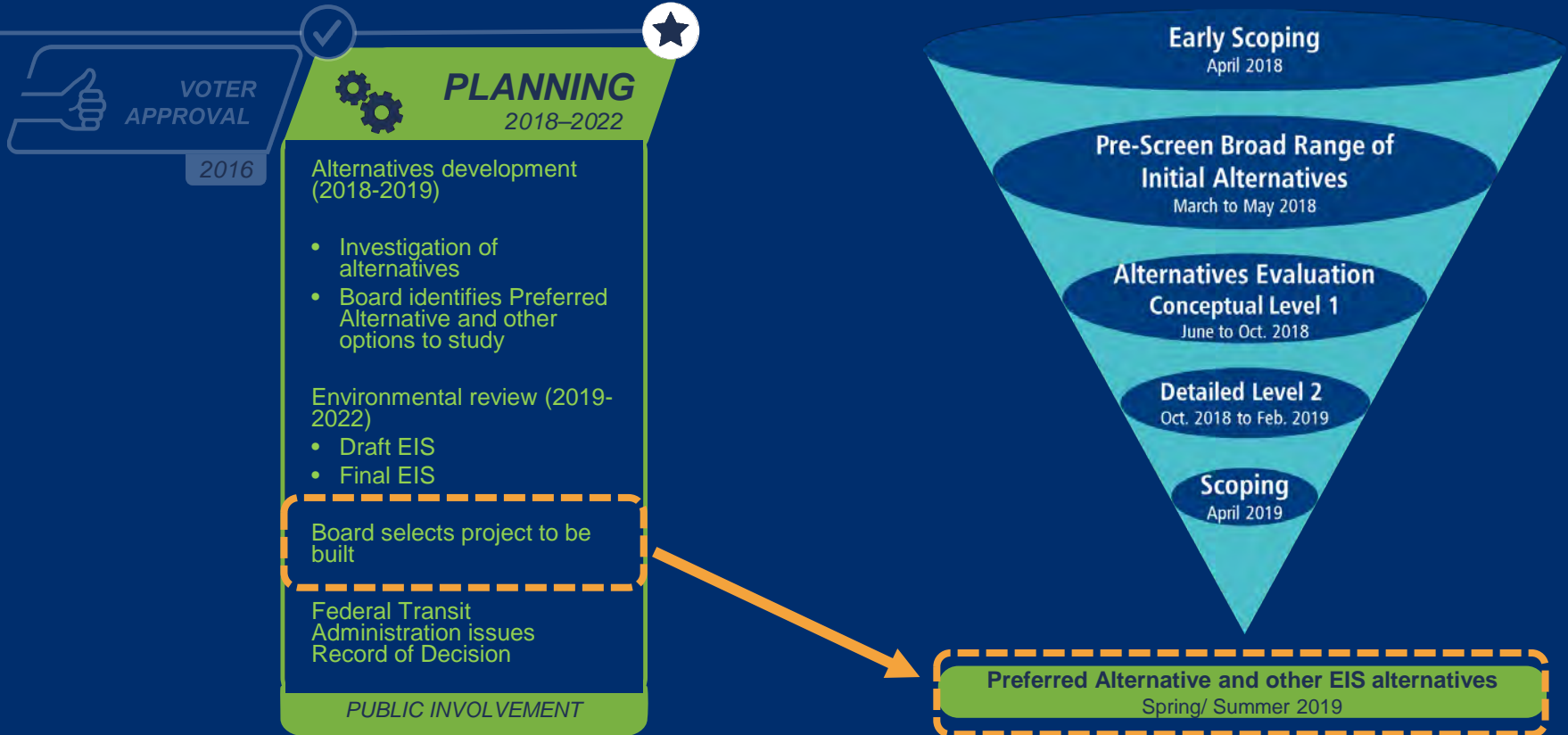
## Federal Way Transit Center to Tacoma Dome

- **Length:** 9.7 miles
- **Stations:** 4 (2 parking garages)
- **Operations and Maintenance Facility South** along the corridor

# Project timeline and milestones



# Alternatives development process



# Community Engagement



Community Updates



Stakeholder Group



Station and Operations & Maintenance Facility Area Workshops



Interagency Group



Elected Leadership Group

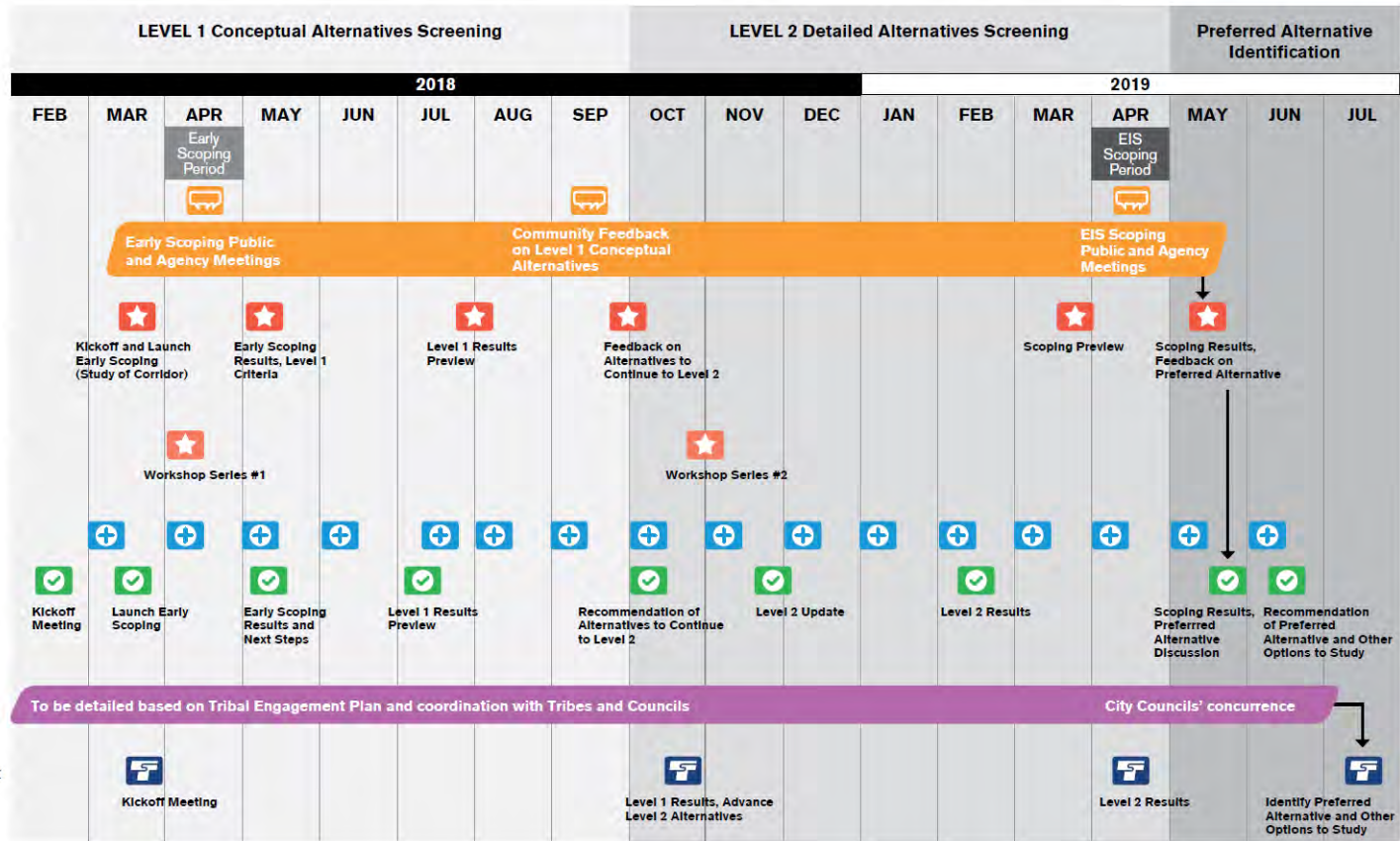
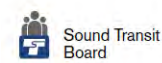
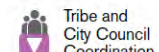
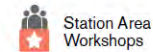


Tribe and City Council Coordination



Sound Transit Board

# Community engagement and collaboration



# External engagement summary

During Alternatives Development phase: February 2018 – May 2019



1,229 comments and questions



16 email updates



18 fairs, festivals, tabling events



13 open houses, workshops with 610+ total participants



82 community briefings



6 Stakeholder Group meetings



9 Elected Leadership Group meetings



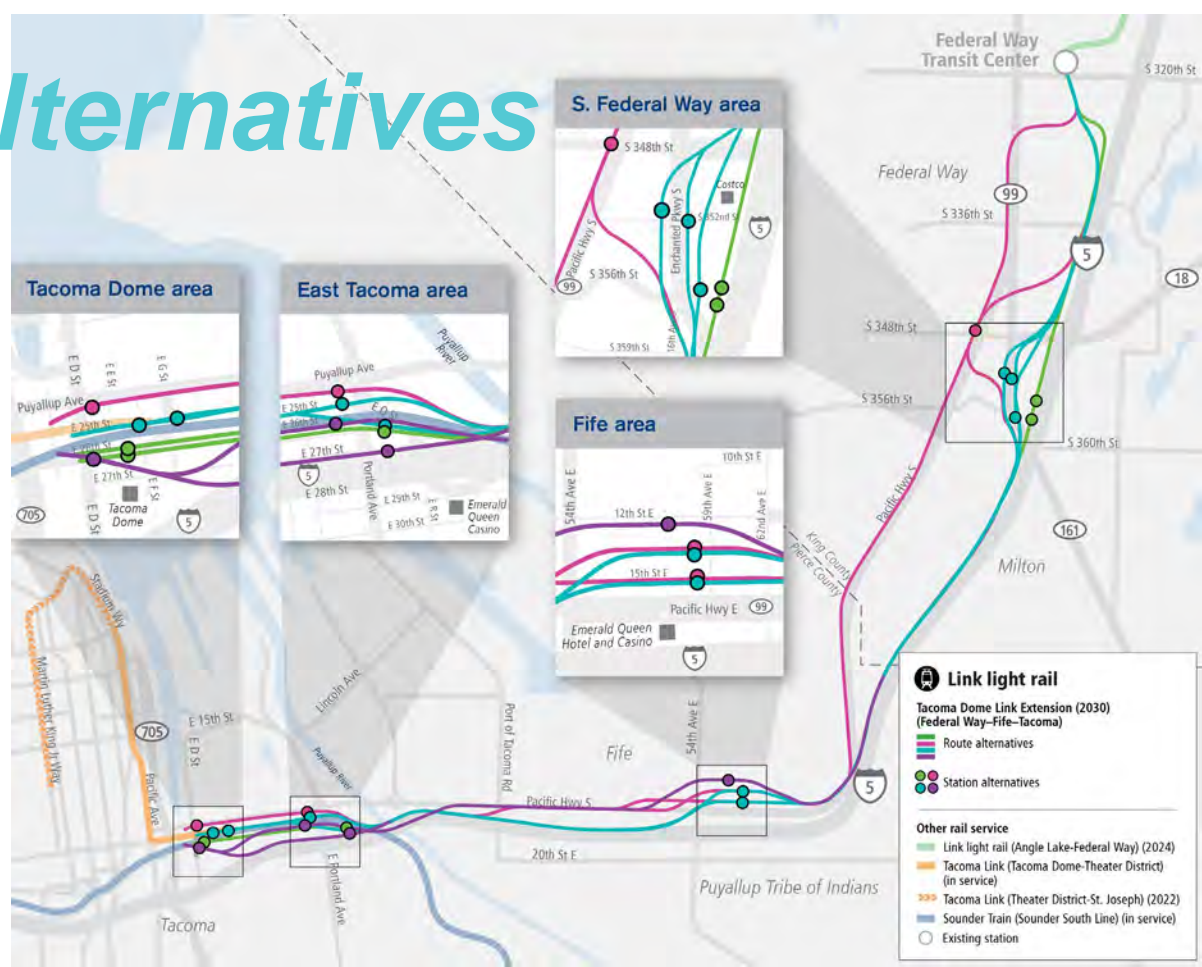
3 online open houses with 8,300+ total participants



***Alternatives  
development***



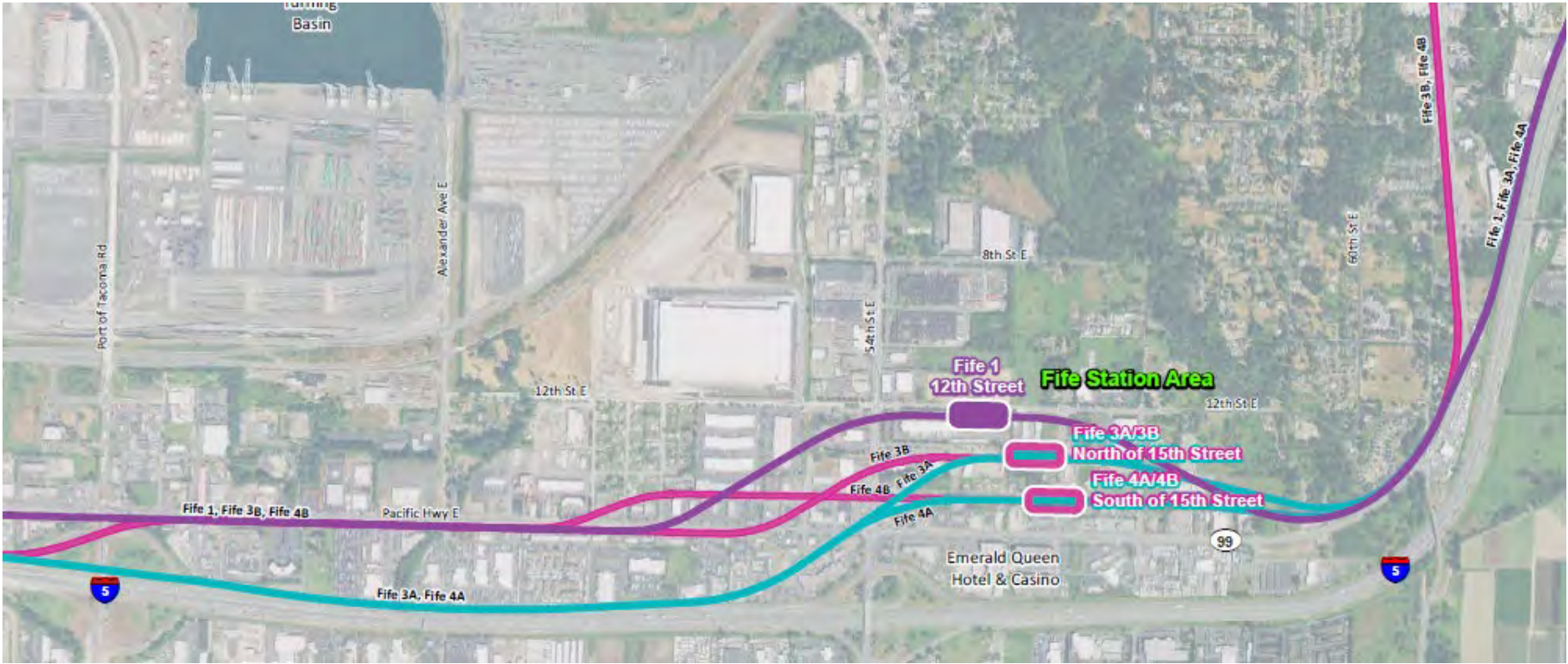
# Level 2 Alternatives



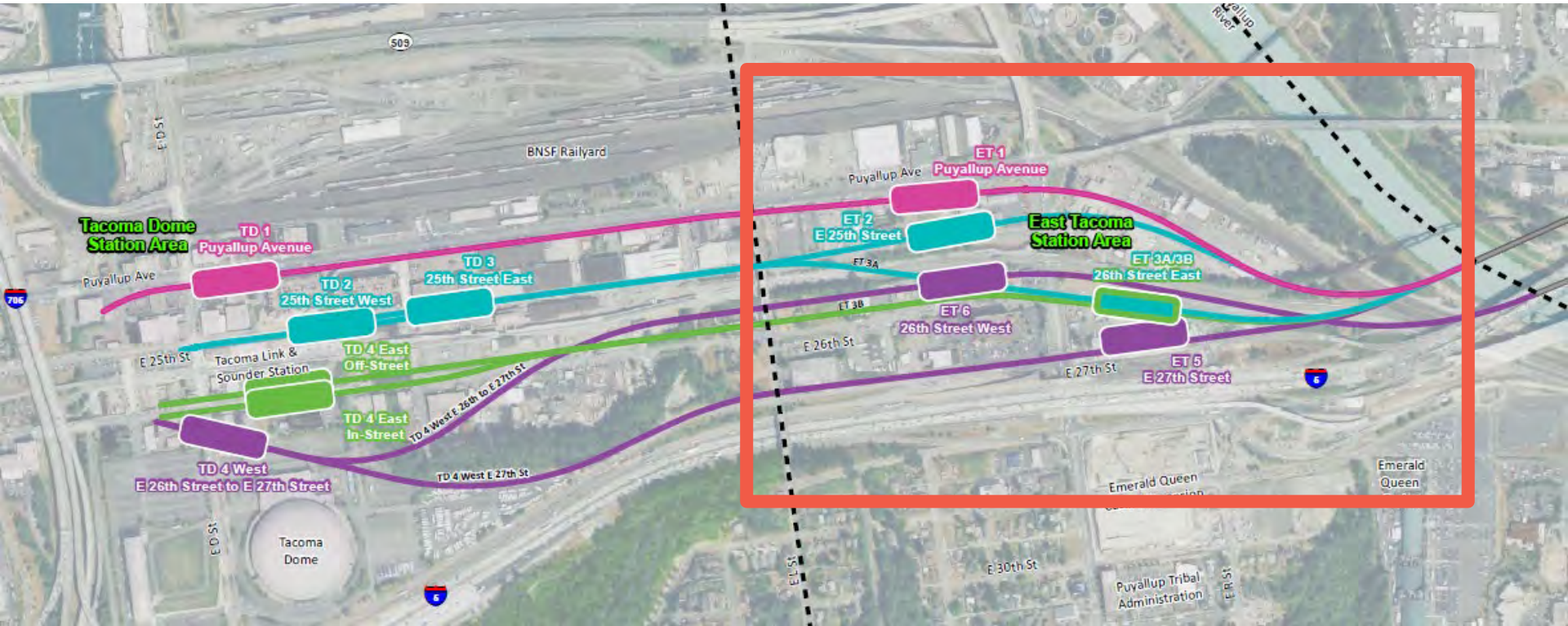
# South Federal Way



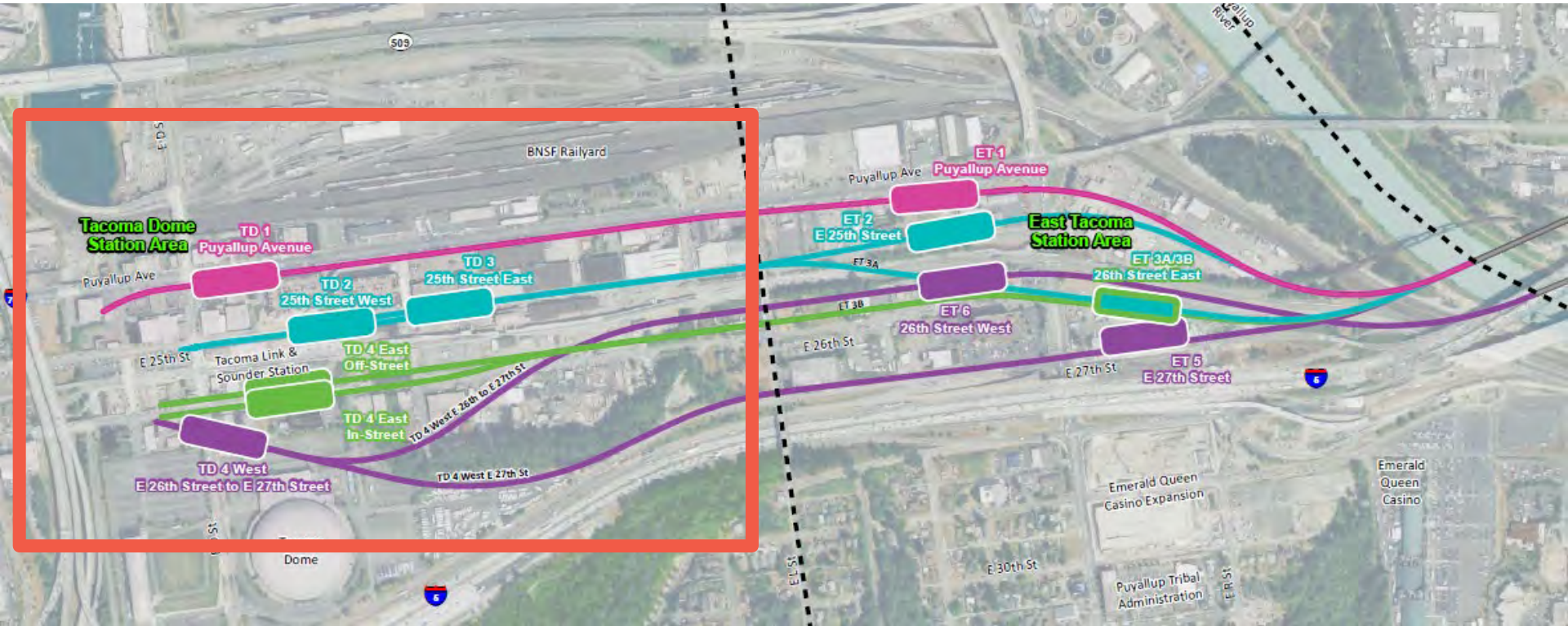
# Fife



# East Tacoma



# Tacoma Dome



A photograph of a light rail train at a station platform. The train is white with blue and green wavy patterns on its side. A man in a dark shirt and khaki pants is boarding the train. Several other people are walking on the platform. In the background, there are buildings and a blue sign with a white train icon. The text "Scoping Comments" is overlaid in the center in a large, white, italicized font.

# *Scoping Comments*

# Scoping communications

- **16** communications from the Puyallup Tribe of Indians, cities, or other agencies
- **289** communications from the general public
  - Over 40 communications from businesses
  - Approximately 15 communications from community groups
- **305** total narrative communications
- **519** online survey participants

**305** total narrative communications and **519** online survey participants. Over **540** scoping comments.



To review scoping summary:  
[www.soundtransit.org/tdlink](http://www.soundtransit.org/tdlink)

# Tribe, city and agency comments

## Tribes

- Puyallup Tribe of Indians

## Federal agencies

- U.S. Environmental Protection Agency

## State agencies

- Department of Archaeology and Historical Preservation
- Department of Ecology
- Department of Natural Resources
- Department of Transportation

## Regional and local agencies

- Port of Tacoma and Northwest Seaport Alliance
- Puget Sound Regional Council
- King County Metro
- Pierce Transit
- City of Federal Way, Public Works and Community Development Directors
- City of Fife, Mayor
- City of Fife, Public Works and Community Development Directors
- City of Tacoma, City Manager

## Other groups that provided comments

- Dome Business District
- Downtown On the Go
- Foss Waterway Development Authority
- Futurewise
- Historic Tacoma
- New Tacoma Neighborhood Council
- Puyallup Watershed Initiative, Active Transportation Community of Interest
- Transportation Choices Coalition



# General public comment topics

- Alternative preference
- Multimodal connections
- Transportation and parking
- Transit-oriented development (TOD)
- Economic impacts and property acquisitions
- Other alternative suggestions
- Future extensions
- Environmental justice populations
- General environmental concerns  
(critical areas, streams/wetlands, fish, construction impacts, noise, parks, utilities)
- General project comments  
(design, budget, community outreach, purpose and need, screening)



# General public comment themes

## Alternative preference

- About 200 comments expressed a preference or support for a specific alignment or station alternative.
- About 125 comments indicated opposition to a specific alignment or station alternative.

## Multimodal connections

- About 140 comments expressed a desire for excellent multimodal connections and transfer opportunities at station locations, also highlighting ADA access and universal design considerations.
- About 105 comments expressed the importance of pedestrian station access.

## Transit-oriented development

- About 105 comments mentioned transit-oriented development or redevelopment opportunities, often as an indication of support for a particular station or alignment.

## Transportation and parking

- About 70 comments mentioned traffic concerns, primarily related to the project's potential impacts on congested roadways in commercial areas.
- About 15 comments mentioned impacts on freight transportation in Fife and Tacoma, highlighting the importance of connections between the Port of Tacoma and transportation corridors.
- About 80 comments highlighted parking concerns, mostly related to whether the parking garage capacity is sufficient to meet demand at stations and alignment impacts to private parking lots.

## Economic impacts and property acquisitions

- About 140 comments indicated a concern about property acquisition and associated effects on businesses and residences, with about 50 comments specifically expressing concerns about the project's impacts on the local economy.

# General public comment themes, cont.

## Other alternative suggestions

- About 55 comments proposed new alternatives and station configurations.
- About 40 comments suggested a below-grade Tacoma Dome alignment and station alternative.
- About 5 comments mentioned a potential alignment and station over existing Sounder ROW.

## Future extensions

- About 35 comment statements mentioned future extensions, highlighting specific extensions beyond Tacoma Dome station.

## General environmental concerns

- 35 comments expressed concern about environmentally critical areas (Hylebos Creek and wetlands, Puyallup River, and tide flats).

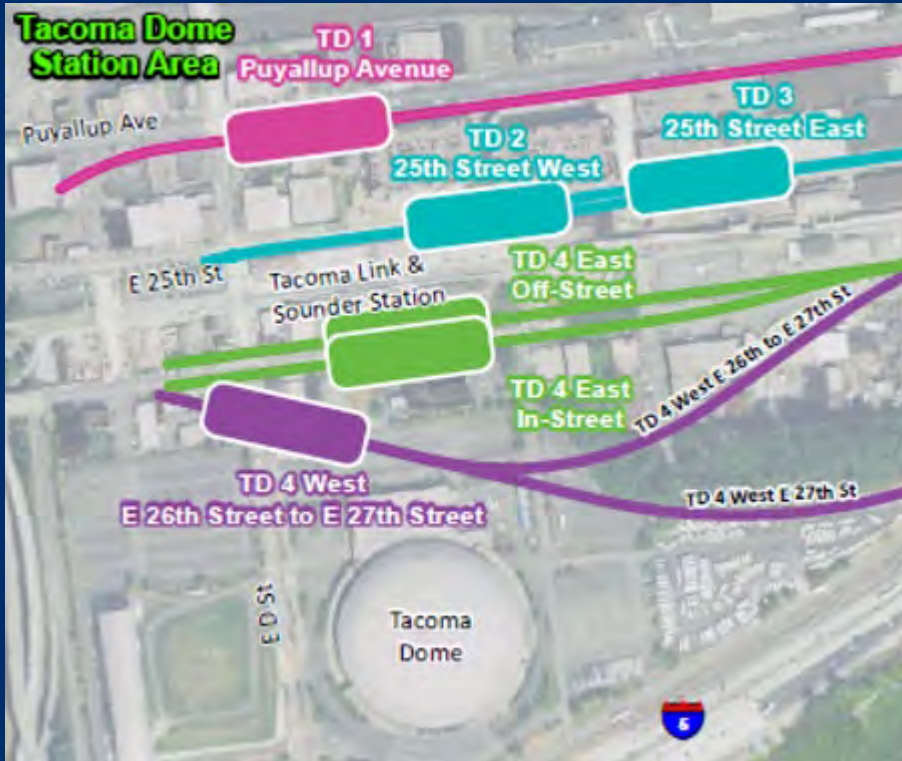
## Environmental justice populations

- About 40 comments expressed concern about potential project impacts to and benefits for Environmental Justice populations.
- Comments focused on residential displacement, minority-owned business displacement, impacts to the Puyallup Tribe of Indians, and community representation on the project outreach team.

## General project comments

- 60 comments were related to design, including design modifications to alternative alignments and stations, potential I-5 overcrossings, and site-specific design modifications.
- 70 comments included thoughts about the project's screening process and EIS recommendations.

# Tacoma Dome: Scoping comments

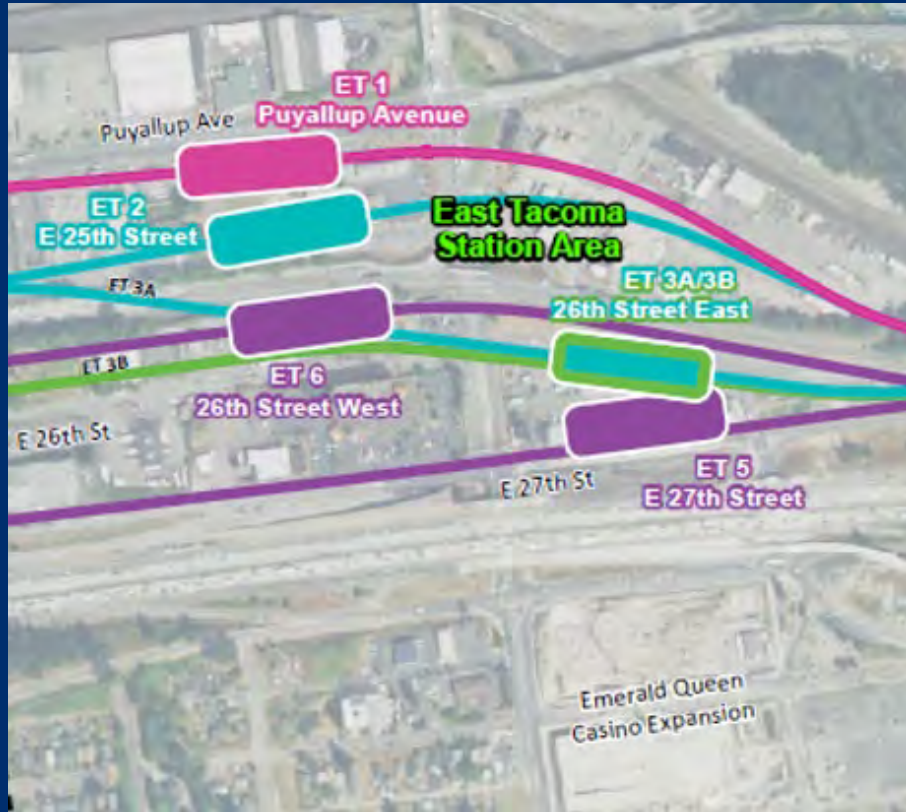


About 185 comments were received for this station area.

## Common themes include:

- Alternative preference - TD 2 received the highest number of mentions (about 45) with over 30 comments expressing support.
- Multimodal connections - proximity and importance of integrating connections to existing transit services in the station area (about 85 comments).
- Interest in TOD opportunities (about 35 comments).
- Interest in a below-grade alternative (40 comments).
- Concern about property acquisition (about 30 comments).

# East Tacoma: Scoping comments



About 100 comments were received for this station area.

## Common themes include:

- Alternative preference - ET 3A received the highest number of mentions (over 20 comments). Of the comments stating an opinion, ET 3A and 3B received the most support (approximately 15 comments each).
- Multimodal considerations including the need to improve non-motorized connections and transit access to the station area (about 35 comments).
- Concern about a lack of parking (about 15 comments).

# Fife: Scoping comments

About 105 comments were received for this station area.

## Common themes include:

- Alternative preference - Fife 3A I-5 received the highest number of comments in support (approximately 15) and Fife 1 received the most comments in opposition (approximately 20).
- Concern about property acquisition (about 45 comments).
- Concern about economic impacts and business displacements (15 comments).
- Concern about parking, traffic congestion, and delays to freight (about 15 comments).



# South Federal Way: Scoping comments



About 165 comments were received for this station area.

## Common themes include:

- Alternative preference – SF 3, SF 4B, and SF 4C received the highest number of mentions (about 35 each). Comments on alternative preference were split across all alternatives with very little differentiation.
- Concern about property acquisitions (about 50 comments).
- Concern about traffic and congestion (about 30 comments).
- Interest in TOD opportunities (25 comments).



***ELG recommendation to  
the Sound Transit Board***

Input to date: Needs further discussion

**East Tacoma**

- ET 1 (Priority) has obligations
- Transportation alternatives for the north station
- ET 2 (Priority) has obligations
- ET 3 (Priority) has obligations

**ET 1 feedback**

- Stations in urban city, which requires station use the East Tacoma neighborhood

ELG recommendation?



# Notable advantages & disadvantages

## Tacoma Dome: Level 1 Technical Evaluation and Feedback summary

✓★ ELG preferred recommendation for further study in EIS    
 ✓ Recommended for further study in EIS    
 ✗ Not recommended for further study in EIS

Alternatives	Technical Analysis	Public Feedback	Stakeholder Group Feedback	Elected Leadership Group Recommendation
Alternatives with MORE POTENTIAL				
<b>TD 2</b> <b>25th Street West</b>	<b>Notable Advantages:</b> Highest station access for people walking, biking, taking transit or driving • Close to other transit modes for ease of transfer (closest proximity to Tacoma Link)	• <b>Survey<sup>3</sup>: high interest</b> in moving forward for further study • <b>Narrative public comments<sup>4</sup>:</b> received at least 90% support to	• Stated support from Puyallup Tribe of Indians, WSDC, Pierce Transit, City of Tacoma Transportation Commission, Sustainable Tacoma Commission, and • Connects to TOD and located at core of Dome District neighborhood • Shortest pedestrian connection to other transit modes • Elevated station is a concern in the	• <b>Recognized:</b> City of Tacoma support for this alternative; potential for deeply buried cultural, tribal resources (requires additional study)
		<div style="border: 1px solid orange; padding: 5px; display: inline-block;">Public Comment: 4/1/2019 – 5/1/2019</div>	<div style="border: 1px solid red; padding: 5px; display: inline-block;">SG meeting: 5/29/19</div>	<div style="border: 1px solid green; padding: 5px; display: inline-block;">ELG meetings: 5/31 &amp; 6/14</div>

WAITING FOR  
 UPDATED  
 GRAPHIC FROM  
 EIS

- Technical analysis first step in evaluation
- Also include summary of scoping feedback, Stakeholder Group feedback, & Elected Leadership Group recommendation
- Results provided to FTA and ST Board

# Next steps

*Public participation throughout*

2019

2020 / 2021

2022

**June 2019**

June 14 provided recommendation to ST Board

**July 25, 2019**

ST Board identifies preferred alternative and other alternatives to study in EIS

**Spring 2021**

ST issues Draft EIS; comment period

ST Board confirms or modifies preferred alternative

**Spring/Summer 2022**

ST issues Final EIS

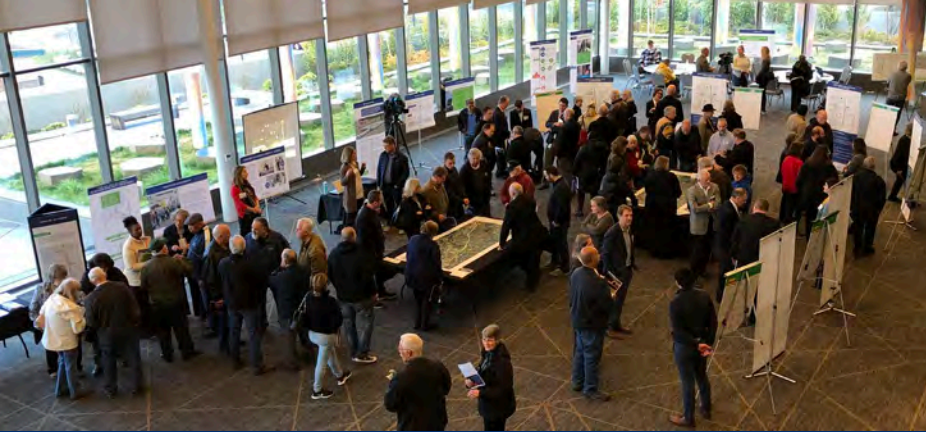
**Summer/Fall 2022**

ST Board selects project to be built

FTA issues record of decision (ROD)

A photograph of a high-speed train, possibly a Shinkansen, in a large industrial factory. The train is white with a dark blue front and a green stripe. It is positioned on a track. In the foreground, there is a blue metal cart with three shelves and four wheels. The floor is concrete with yellow safety lines. The background shows the factory's interior with various equipment and structures.

# ***OMF South Update***



# OMF South scoping

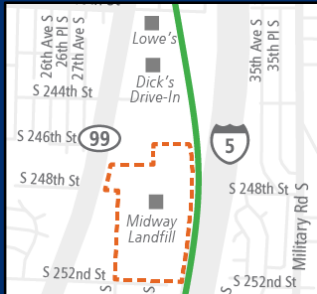
## Scoping summary report now available

- Over **5,800** engagements since February
- **370+** people attended two public meetings
- **3,470+** visited online open house
- **1,400+** total comments received via meetings, phone, email, online
- **2,000** pre-scoping period comments
- **8** briefings

# OMF South Sound Transit Board Action

**Three sites for study in the Draft Environmental Impact Statement:**

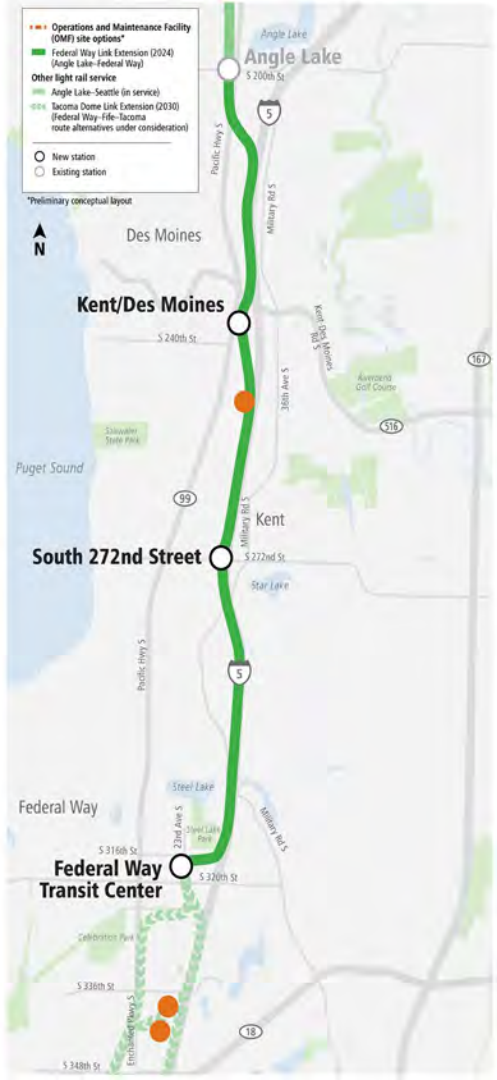
**Midway Landfill  
and I-5**



**S 336th St  
and I-5**



**S 344th St  
and I-5**



# SEPA Draft & Final EIS Milestones

**May 2019**

**Identification sites  
for DEIS**

*Board action*

**2019 – 2020**

**Prepare DEIS**

*Staff-level work;  
coordinate with external  
partners*

**Late 2020**

**Publish DEIS**

*Public review and  
comment*

**Late 2020**

**Identify Preferred  
Site**

*Board action*

**2021**

**Prepare and  
Publish FEIS**

*Staff-level work;  
coordinate with external  
partners*

**Late 2021**

**Select Site**

*Board action*



[soundtransit.org/tdlink](https://soundtransit.org/tdlink) 

