

Ballard Link擴展項目

CID社區資訊諮詢會 -
公平主題
2024年3月28日

Ballard Link Extension

CID Community Info
Sessions – Equity Topic
3/28/24





Sound Transit 3 號議案 - 區域投資

連接Puget Sound普吉特海灣地區、長達252英里的網絡

- 116英里長的Link light rail
- 91英里長的Sounder通勤鐵路
- 45英里長的Stride快速公共運輸系統

ST3 – Regional investment

252-mile network connecting the Puget Sound region

- 116 miles of Link light rail
- 91 miles of Sounder commuter rail
- 45 miles of Stride bus rapid transit



Ballard Link擴展項目

- ✓ 包含在Sound Transit 3 (Sound Transit 3號議案) 選民核准的計劃中。
- ✓ 增加將近八英里的輕軌服務，包括僅通行新輕軌的市區隧道。
- ✓ 包括九個自CID唐人街/國際區到Ballard的新車站。

Ballard Link Extension

- ✓ Included in Sound Transit 3 (ST3) voter approved plan.
- ✓ Adds nearly eight miles of light rail service, including a new light rail-only downtown tunnel.
- ✓ Includes nine new stations from Chinatown-International District to Ballard.

Sound Transit委員會指示 (M2023-18)

Ballard Link Extension



南市中心樞紐規劃



Seattle



總覽

- Sound Transit委員會於2023年3月確定以CID唐人街/國際區以北的車站 (Midtown James Street車站) 和CID唐人街/國際區以南的車站 (CID唐人街/國際區迪邦街Dearborn Street車站) 作為Ballard Link擴展項目 (BLE)中CID唐人街/國際區區段的首選方案。
- 委員會也指示需在環境評審作業流程中進一步研究CID唐人街/國際區第四大道更淺層備選方案。
- 新版BLE環境影響報告草案即將出爐, 內容包括最新的首選方案以及其他備選方案的調整。

了解更多

從 2024 年開始, 參加我們持續舉辦的社區資訊座談會以便了解更多資訊。搶先在2024年底BLE環境影響報告草案公布前, 先明瞭與本項目和環境評審相關的關注議題。

總覽

「委員會承認, 無論CID唐人街/國際區車站的位置在哪裡, 南市中心都將受益於聯合車站激活和Jackson樞紐的改進。」
(第14頁) 此舉,

- 在最近的後續研究工作和過去的社區和機構規劃工作的基礎上, 持續加強社區參與的力量。
- 遵照Sound Transit委員會的指示釐清這些改善的可能工作範圍與時程, 以及資金來源和合作機會。
- 包含CID唐人街/國際區、Pioneer Square以及其他區域, 藉此改進周邊地區以及附近車站和轉乘站四通八達的便利性。

加入我們

自2024年初起, Sound Transit、西雅圖市和金縣每季都會聯合舉辦一系列的研討會, 設想並確定南市中心區域的改善項目。工作人員會在委員會選擇即將建設的項目之前向委員會報告上述情況。

Sound Transit Board Direction (M2023-18)

Ballard Link Extension



Overview

- March 2023, the Sound Transit Board identified a Station North of CID (Midtown James Street Station) and a Station South of CID (CID Dearborn Street Station) as the preferred alternative for the Ballard Link Extension (BLE) in the Chinatown-International District.
- The Board also directed further study of the CID 4th Avenue Shallower Alternative as part of the environmental review process.
- A new BLE Draft EIS will be completed that includes the new Preferred Alternative and refinements to other alternatives.

Learn more

In 2024, learn more at our ongoing community information sessions. Explore topics of interest related to the project and next steps ahead of the publication of the BLE Draft EIS in late-2024.



South Downtown Hub Planning



Seattle



Overview

“The Board acknowledges that, regardless of the location of the CID station, south downtown would benefit from the Union Station activation and Jackson Hub improvements” — (Pg 14). This effort

- Builds on recent further studies effort and past community and agency planning efforts to continue engagement with the community.
- Follows direction from the Sound Transit Board to clarify potential scope and schedule of such improvements as well as funding and partnership opportunities.
- Encompasses CID, Pioneer Square and beyond to improve accessibility through the neighborhoods and to nearby stations and transfer points.

Join us

Starting in early 2024, Sound Transit, the City of Seattle, and King County will host a quarterly workshop series to envision and identify improvement projects in the South Downtown area. Staff will report back to the Board on the above in advance of Board selection of the project to be built.

!CID社區資訊諮詢會

為了預備即將進行的Ballard Link擴展項目 (BLE) 環境影響報告草案 (EIS) 的研擬，我們將在2024年為CID唐人街/國際區和Pioneer Square社群舉辦一系列的資訊諮詢會。我們正在探討您在環境評審期過程中表示感興趣的主題和問題

第一節 - 平等 (3月28日 (星期四) 下午4點至6點)

- 說明平等分析、參與工具和社區意見回饋如何為專案發展與決策里程碑提供資訊
- 徵求社區對種族平等成果及後續措施的意見回饋

第二節 - 區域和地方路線 (4月30日星期二下午4點至6點)

- 說明乘客日後如何依據不同的CID和Midtown車站位置狀況到達重要目的地、在輕軌線和其他公共交通模式之間轉乘

第三節, 第四節, 第五節 - 建設主題 (2024年夏季/秋季 - 三階段)

- 說明專案發展資訊，以及關於施工方法和持續期間的進一步研究
- 瞭解如何進一步減輕CID區域內的施工影響，縮短施工持續期間

第六節 - 環評流程 (2024年夏季)

- 提供環評流程相關資訊，包括後續措施、新的《環境影響報告草案》如何以之前的工作以及民眾意見回饋為基礎

第七節 - 緩解措施及其他社區益處 (2024年秋季)

- 討論環評流程的相關緩解措施，以及其定義方式與定義時間



CID Community Info Sessions

In preparation for the upcoming Ballard Link Extension (BLE) Draft Environmental Impact Statement (EIS), we are holding a series of information sessions through 2024 for the Chinatown International District (CID) and Pioneer Square communities. We are exploring topics and questions you expressed an interest in over the course of the environmental review process.

Session #1 – Equity (Thursday, March 28, 4-6pm)

- Share how equity analysis, engagement tools, and community feedback inform project development and decision milestones
- Seek community feedback on racial equity outcomes and next steps

Session #2 - Regional and Local Access (Tuesday, April 30, 4-6pm)

- Share how future riders will access key destinations, transfer between light rail lines and other transit modes based on different CID and Midtown station location scenarios

Sessions #3, #4, and #5 - Construction Topic (Summer/Fall 2024)

- Share what has been learned through project development and further studies about construction approach and duration
- Explore ways to further minimize construction impacts and duration in the CID

Session #6 - Environmental Process (Summer 2024)

- Provide information about the environmental process, including next steps and how the new Draft EIS will build on prior work and public feedback

Session #7 - Mitigation and Community Benefits (Fall 2024)

- Discuss what mitigation refers to in the context of the environmental process, and how and when it is defined



***Ballard Link* 擴展項目**

Ballard Link Extension

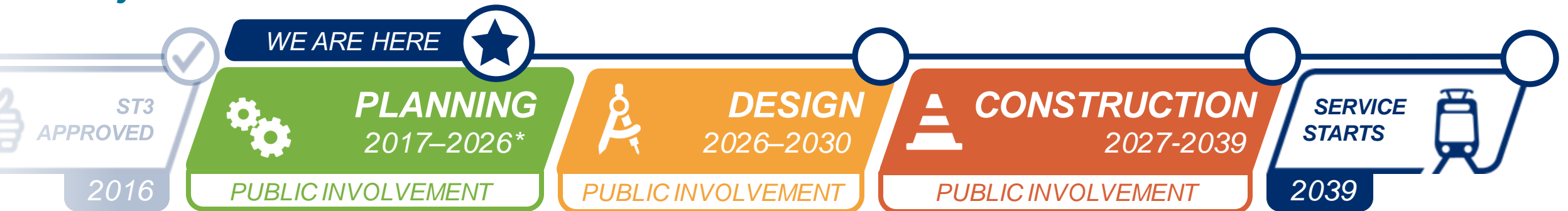
Ballard Link 擴展項目 (BLE)

項目時間表



Ballard Link Extension (BLE)

Project timeline



Draft Presentation for Meeting Discussion Purposes Only; Do Not Distribute

僅用於會議討論目的之簡報草稿；請勿互傳



Ballard Link 擴展項目備選方案

我們進一步的研究

- 首選方案
- 其他《環境影響報告》備選方案

Ballard Link Extension alternatives

What we're studying going forward

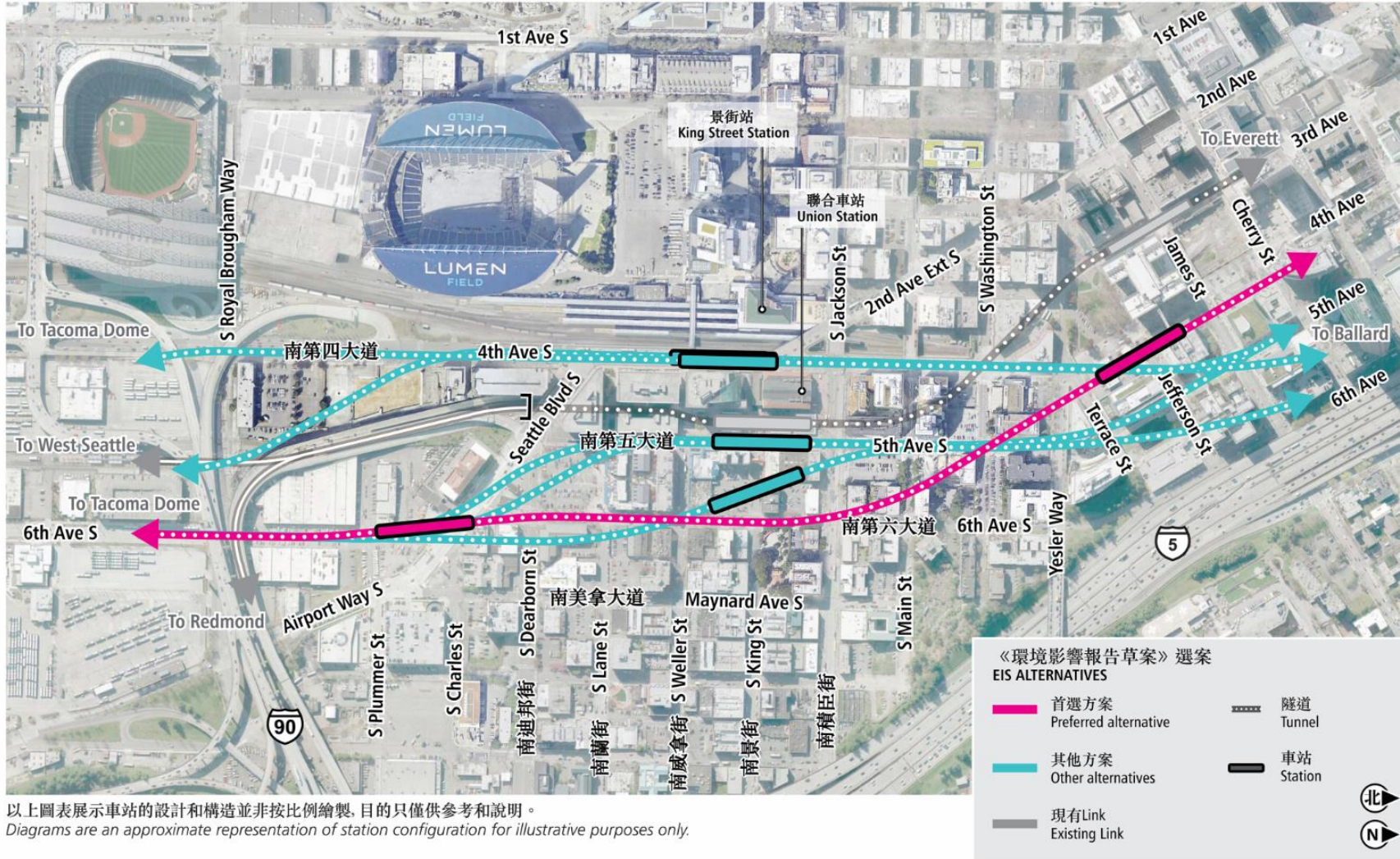
- Preferred alternative
- Other EIS alternatives

***CID和Midtown的
BLE備選方案***

***BLE alternatives
in CID and Midtown***

研究選案

What we're studying



環評流程

Environmental process

環境影響報告

Environmental Impact Statement (EIS)

什麼是《環境影響報告》？

該報告簡稱為「EIS」。

What's an Environmental Impact Statement?

or EIS for short

讓機構和公眾能夠了解對環境的影響, 並讓決策過程更加順利。

- 範圍
- 備選方案範圍
- 潛在影響
- 潛在緩解措施

Provides agencies and the public an understanding of environmental consequences and assists in decision-making.

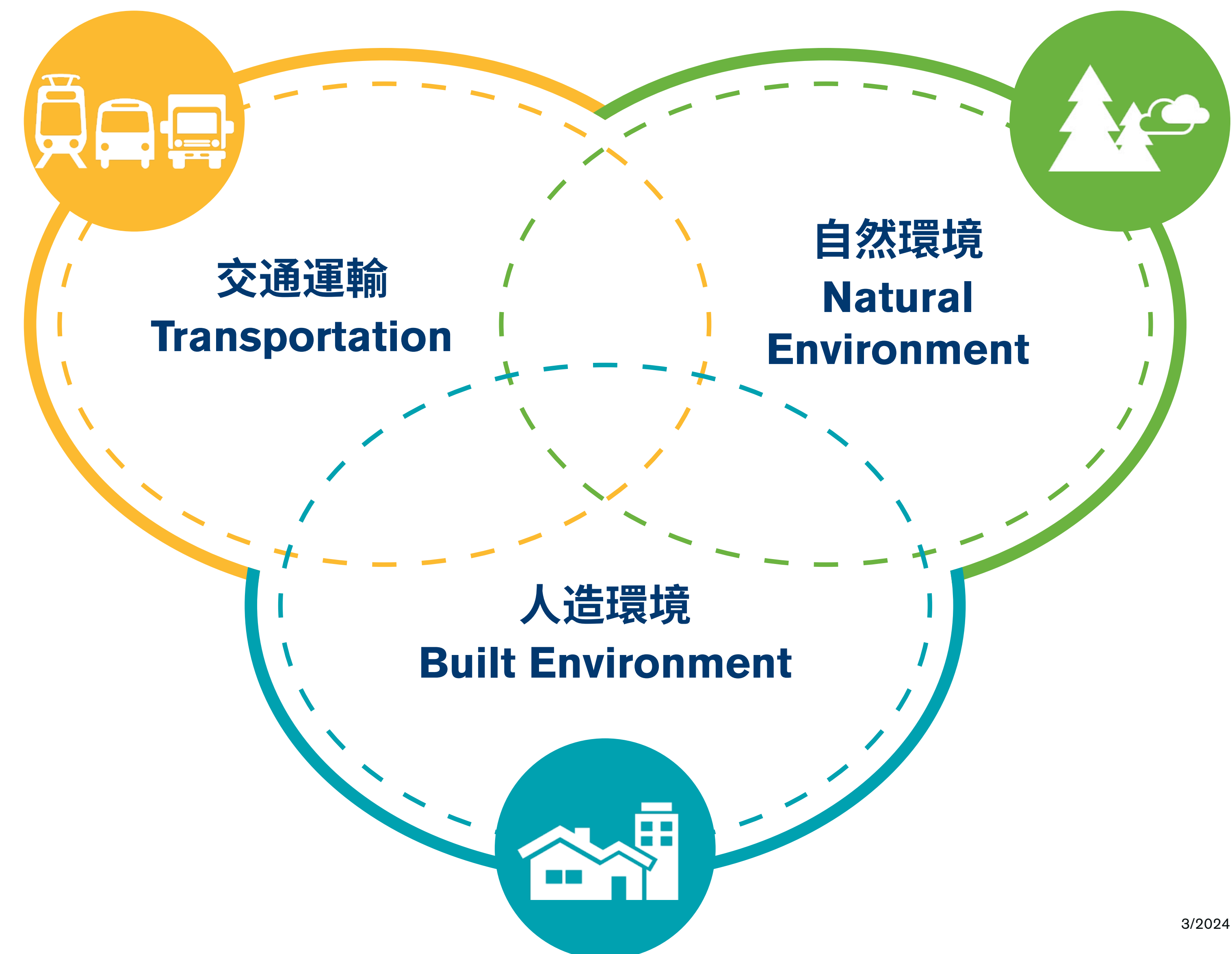
- Scope
- Range of alternatives
- Potential impacts
- Potential mitigation

《環境影響報告》通常研究什麼？

項目如何影響.....

What is typically studied in an EIS?

How a project affects...



《環境影響報告》通常研究什麼？

交通運輸

- 區域交通
- 運輸服務
- 主幹道和地方街道系統
- 停車
- 非機動車設施
- 導航
- 貨運

自然環境

- 空氣品質與溫室氣體排放
- 生態系統
- 水資源
- 地質和土壤

人造環境

- 土地收購、拆遷
- 噪音與震動
- 經濟效應
- 《視覺資源》
- 公園與娛樂
- 土地使用
- 能源
- 有害物質
- 公共服務
- 歷史與考古資源
- 社會資源、社區設施和街區
- 電磁場
- 公用設施

What is typically studied in an EIS?

Transportation

- Regional transportation
- Transit services
- Arterial and local street systems
- Parking
- Non-motorized facilities
- Navigation
- Freight

Natural environment

- Air quality and greenhouse gas emissions
- Ecosystems
- Water resources
- Geology and soils

Built environment

- Acquisitions, displacements and relocations
- Noise and vibration
- Economic effect
- Visual resources
- Parks and recreation
- Land use
- Energy
- Hazardous materials
- Public services
- Historic and archaeological resources
- Social resources, community facilities and neighborhoods
- Electromagnetic fields
- Utilities

《環境影響報告》研究內容：

環境正義指的是進行機構決策時及進行其他會影響民眾及環境健康的聯邦活動時，用正當的方式對待全體民眾，以及讓全體民眾進行有意義的參與，而不考量民眾的收入、種族、膚色、祖籍國、部落隸屬關係或失能與否，使民眾能夠：

- (1) 受到完整的保護，免於遭到不成比例及負面的人體健康及環境影響...包括與氣候變遷相關、日積月累的環境影響和其他負擔，與種族主義遺毒或其他結構性或體制性的障礙；
- (2) 公平享有健康、永續及活躍的環境，得以在其中生活、遊玩、工作、學習、成長、敬拜，並從事文化及維持生計的活動。

(環境品質委員會，2023年《國家環境政策法施行細則》)

- ✓ 符合總統行政命令12898號 (1994) 及 14096 (2023) 號的分析
- ✓ 說明人口統計資訊
- ✓ 評估項目是否會對受關注的族群造成不成比例的影響
- ✓ 考量潛在的項目效益，例如提供了更佳的機會
- ✓ 記錄我們從拓展工作中得到的資訊


EIS studies: Environmental Justice

Environmental justice means the just treatment and meaningful involvement of all people, regardless of income, race, color, national origin, Tribal affiliation, or disability, in agency decision making and other Federal activities that affect human health and the environment so that people:

(1) Are fully protected from disproportionate and adverse human health and environmental effects . . . including those related to climate change, the cumulative impacts of environmental and other burdens, and the legacy of racism or other structural or systemic barriers; and

(2) Have equitable access to a healthy, sustainable, and resilient environment in which to live, play, work, learn, grow, worship, and engage in cultural and subsistence practices.

(Council on Environmental Quality, National Environmental Policy Act implementing regulation, 2023)

- 
- ✓ Analysis consistent with Presidential Executive Orders 12898 (1994) and 14096 (2023)
 - ✓ Describes demographics
 - ✓ Evaluates whether project disproportionately impacts on populations of concern
 - ✓ Considers potential project benefits such as improved access to opportunity
 - ✓ Documents what we hear from outreach efforts

公平與包容

《環境影響報告》(Environmental Impact Statement, EIS)各範疇內的環境正義焦點，並考量運籌、結構及累積效應

Equity and inclusion

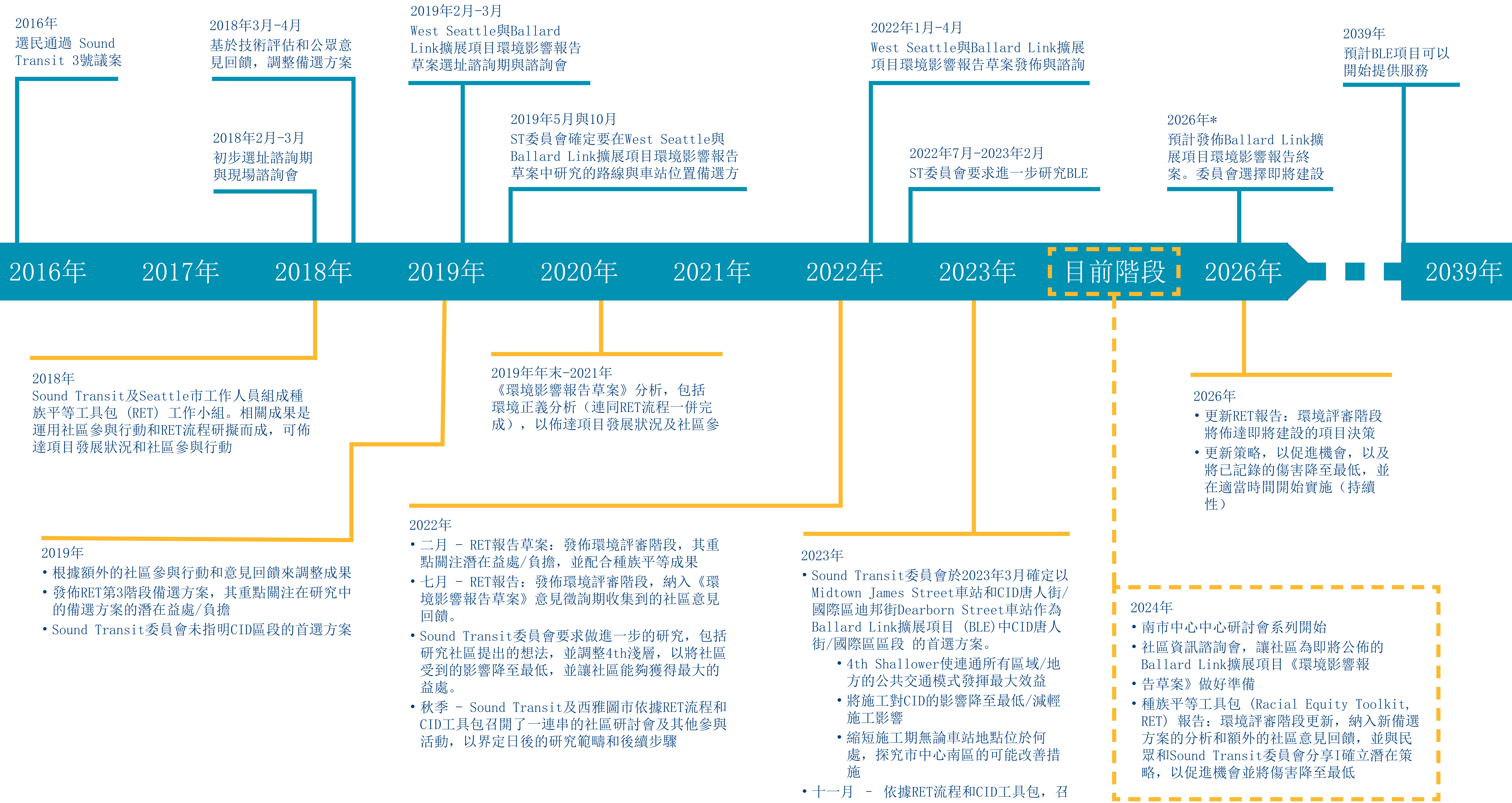
Environmental justice focus within each area of the EIS and considers operational, construction, and cumulative effects.



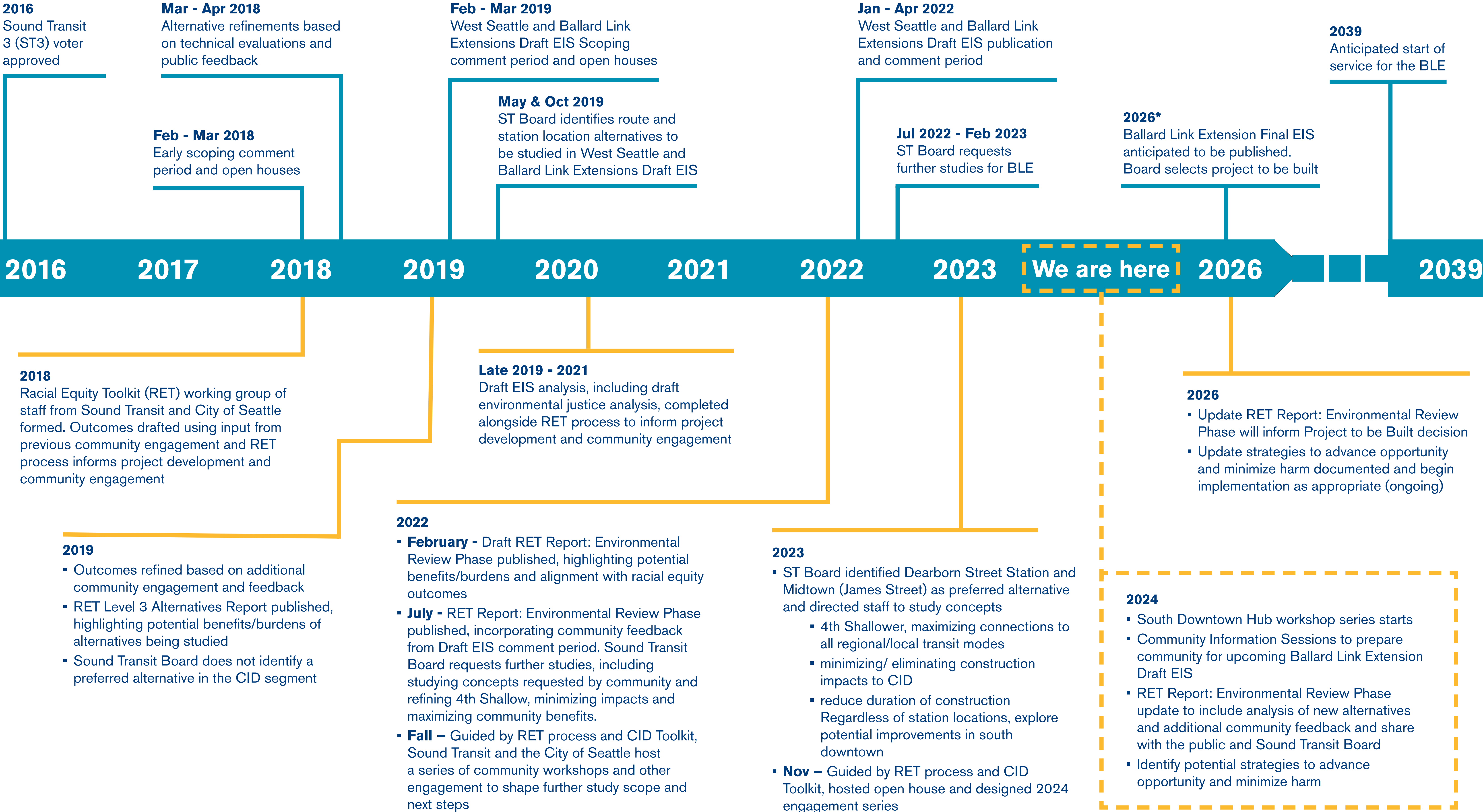
公平工具和社區參與

***Equity tools and community
engagement***

以往規劃與未來進



How we got here and where we are going



什麼是種族平等工具包？

種族平等工具包 (RET) 明訂相關流程，並列舉一連串有助於輔導研擬、實行與評估政策、倡議、計畫的相關題目，以及預算方面的疑難雜症，以利因應對種族平等造成的

步驟1:

設定結果
設立重要的種族平等工作社區成果，以主導分析。

步驟2

邀請利害關係人參與並分析資料
向社區和工作人員收集相關資訊，即這個問題在種族平等方面對於社區有何益處或負擔。

- 我們應收集哪些資料？
- 我們需要聆聽哪些人的意見？

步驟3

認定益處及/或負擔
分析影響議題並與種族平等成果相整合。

步驟4

擴大機會或是將傷害降至最低
研擬策略，打造更好的種族平等環境，或將非預期後果的影響度降至最低。

步驟5

評估、提高意識、負起責任
長期追蹤對有色群體的影響。繼續向利害關係人宣導，並邀請利害關係人參與。記錄未解決的問題。

步驟6

回報
與領導部門及變革小組分享從分析結果及從未解決問題中得知的資訊

RET如何影響有關Ballard Link擴展項目的決定？

進行項目規劃期間，RET界定了種族平等的成果、檢視了路線和車站地點以及其相對於上述成果的表現、著重在針對益處和負擔做出有意義的參與行動，以及如何促進機會或縮減傷害，以及向大眾及決策者強調重要的考量點。這些結果會在達到主要項目里程碑時，與社區和Sound Transit委員會分享，以佈達行動內容。



What is the Racial Equity Toolkit?

The Racial Equity Toolkit (RET) is designed to integrate an explicit consideration of racial equity in decision-making related to projects, policies, programs and practices. It is both a product and a process.

Step 1

Outcomes

Establish key community outcomes for racial equity to guide analysis.

Step 2

Involve Stakeholders and Analyze Data

Gather information from community and staff on how the issue benefits or burdens the community in terms of racial equity.

- **What data should we collect?**
- **Whose voices need to be heard?**

Step 3

Determine Benefits and/or Burdens

Analyze issue for impacts and alignment with racial equity outcomes.

Step 4

Advance Opportunity or Minimize Harm

Develop strategies to create greater racial equity or minimize unintended consequences.

Step 5

Evaluate, Raise Awareness, Be Accountable

Track impacts on communities of color overtime. Continue to communicate with and involve stakeholders. Document unresolved issues.

Step 6

Report Back

Share information learned from analysis and unresolved issues

How does the RET inform decision-making for the Ballard Link Extension project?

During project planning, the RET defines outcomes for racial equity, examines route and station locations and how they perform relative to those outcomes, **emphasizes meaningful community engagement** on potential benefits and burdens and how to advance opportunity or minimize harm, and elevates key considerations for the public and decision-makers. These results are shared with the community and Sound Transit Board at key project milestones to inform actions.



在WSBLE《環境影響報告草案》階段, 會按照以下方式更新種族平等成果最新資訊:

- 推動環境與經濟正義, 提升有色人種社區的經濟與健康條件。
- 提升有色人種及低收入人口族群的交通便利性
- 創造平等發展機會, 包括擴大有色人種社區的住宅和社區資產。
- 避免對有色人種及低收入人口族群社區造成不成比例的影響。
- 在所有車站營造歸屬感, 讓有色人種社區的每一位民眾都能在車站裡找到自己心之所向、有安全感且樂於前往的空間。
- 積極鼓勵有色人種及低收入人口社區參與項目規劃, 不讓這些民眾感到事不關己。

這些成果對您的
意義是什麼?

有何考慮不
周之處嗎?

RET團隊會根據持續不斷的社區回饋意見, 進一步重點關注Chinatown/ID車站區域的下列成果:

- 減少項目可能帶來的有害影響, 並與受到影響的社區合作找機會彌補過去造成的傷害
- 盡可能建設銜接通道供所有使用者利用
- 社區民眾會為一百年後的後代子孫著想, 透過自主決定的方式針對會對社區帶來影響的決定達成協議

During the WSBLE Draft EIS phase, racial equity outcomes were updated as follows:

- Advance environmental and economic justice to improve economic and health outcomes for communities of color.
- Enhance mobility and access for communities of color and low-income populations.
- Create opportunities for equitable development that include expanding housing and community assets for communities of color.
- Avoid disproportionate impacts on communities of color and low-income populations.
- Create a sense of belonging for communities of color at all stations, making spaces where everyone sees themselves as belonging, feeling safe, and welcome.
- Meaningfully involve communities of color and low-income populations in the project.

Based on continuous community feedback, the RET team further focused on the following outcomes for Chinatown/ID station area:

- Limit harmful impacts of the project and work with impacted communities to identify opportunities to repair past harm
- Maximize connections for all users
- Community shapes decisions that impact them, through self-determination and with a 100-year vision for future generations

What do these outcomes mean to you?

Is there anything we are missing?

CID唐人街/國際區參與工具包

CID Engagement Toolkit

什麼是CID唐人街/國際區參與工具包?

這是由西雅圖CID唐人街/國際區的社區利害關係人設計且切合其需求的工具,可集體參與、進行相關決定,以及在面臨可能影響CID唐人街/國際區的議題、疑慮或項目時倡導社區利益。此工具也開放一般民眾使用,可作為其他社區和政府合作夥伴的資源。

What is the CID Engagement Toolkit?

This is a tool developed by and for community stakeholders in Seattle's Chinatown International District (CID) to collectively engage, make decisions about and advocate for community interests when faced with issues, concerns or projects that could impact the CID. It is also being made available to the general public as a resource for other communities and governmental partners.

使用工具包的目的是確保:

- 讓CID唐人街/國際區中的多元社區有機會做出有意義的參與。
- 對影響CID 唐人街/國際區的項目和政策發表強大的的社區意見和宣傳
- 以支持社區目標與需求的方式實施項目

The goals for using the Toolkit are to ensure:

- Opportunities for meaningful participation of diverse communities in the CID.
- Powerful community voice and advocacy on projects and policies that affect the CID.
- Implementation of projects in a way that supports community goals and needs.

Chinatown International District Community Engagement Toolkit

Part 3. Planning Guide



CID Visioning Advisory Group

Updated January 2022

Step 3g. Draft Evaluation and Accountability Plan	
Final Review	

5

Consulting Team:

Tu Consulting

MEM Consultants

⁵ Adapted from: "Community Engagement Toolkit for Planning," Queensland, Australia, 2017.
<https://dlippprd.blob.core.windows.net/general/community-engagement-toolkit.pdf>

16

CID唐人街/國際區社區流程

核心價值

包容與公平

透明與信任

- 對流程和決策保持清晰和開放。
- 回報意見和反饋如何用於工作或影響工作

協作和共同目標

- 回首過去, 展望未來, 接納社區間的歷史, 從而向前發展。
- 專注於一起為共同利益而努力。
- 以尊重和建設性的方式解決意見分歧。
- 對錯誤、學習持開放態度, 並日漸改進。

禮貌相待

- 創造民眾可以自由分享意見的空間。
- 傾聽並理解他人的想法和觀點。

為持續與社區和機構合作夥伴進行討論：

這些價值觀對本特定議題或項目有何影響？

在本項目中按照這些價值觀來採取行動有多容易或具有挑戰性

為確保在本項目中貫徹這些價值觀和原則, 我們應該注意什麼？

CID Community Process

Core Values

Inclusion and Equity

Transparency and Trust

- Be **clear and open** about the process and decision-making.
- **Report back** how input and feedback was used or informed the work.

Civility

- Create spaces where people are comfortable sharing opinions.
- Listen and understand others' ideas and perspectives.

Collaboration and Shared Purpose

- Reach back to reach forward, embracing history between neighborhoods to move forward.
- Focus on working together for the **common good**.
- Work through differences of opinion respect fully and constructively.
- Be open to mistakes, learning, and improving over time.

For ongoing discussion with the community and agency partners:

What are the implications of these values for this particular issue or project?

In what ways will it be easy or challenging to act on these values in this project?

What should we pay attention to in order to ensure that these values and principles are activated in this project?