

Everett Link Extension & OMF North

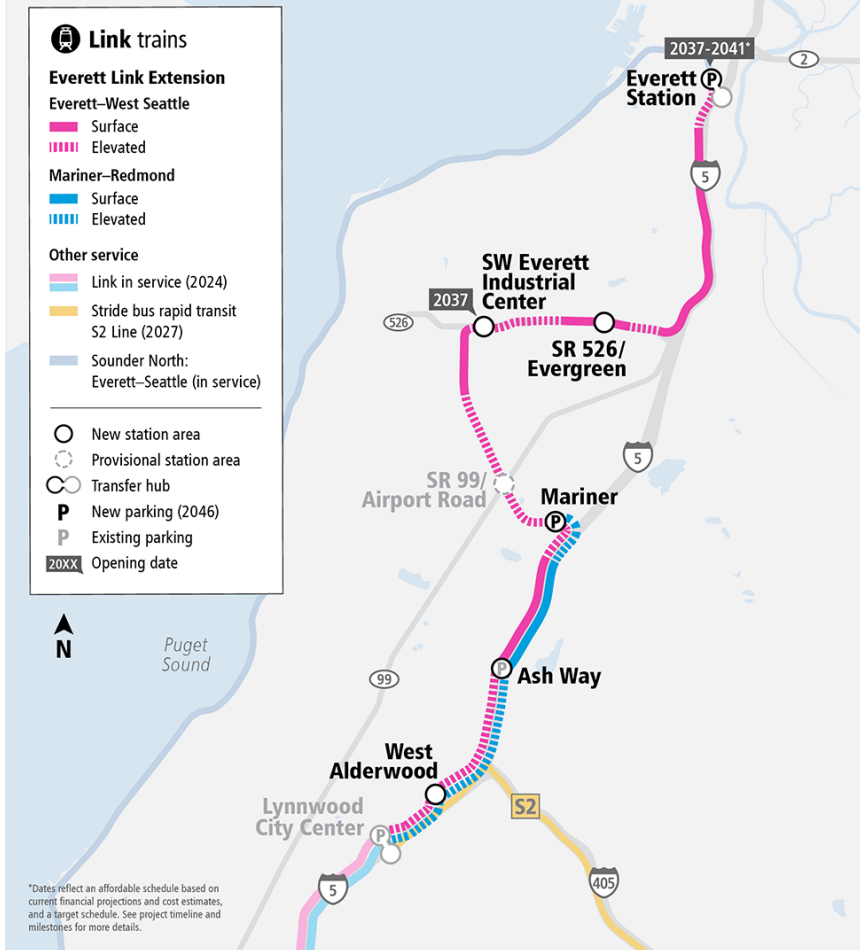
*Community Oversight Panel
03/08/23*



Everett Link Extension

ST3 Representative Project

- **Length:** 16 miles
- **Stations:** six plus one provisional (unfunded) station
- **Target schedule:** 2037
- **Affordable schedule:** 2037/2041
- **New parking** at Everett Station and Mariner opens 2046



Operations and Maintenance Facility North

Facility supports EVLE and system-wide expansion needs

- **Capacity:**
 - Store, maintain, and repair vehicles
 - 150+ light rail vehicles
 - 450+ high skilled, living wage jobs
- **Affordable and Target Schedules:** 2034



Project Performance Tracker Status



Cost Risks

- Comparative cost estimates are within an acceptable range; QRA scheduled for Q1 2023.
- Unknown engineering challenges over lengthy and varied geography with limited design.
- Unknown ROW needs in early design.

Schedule Risks

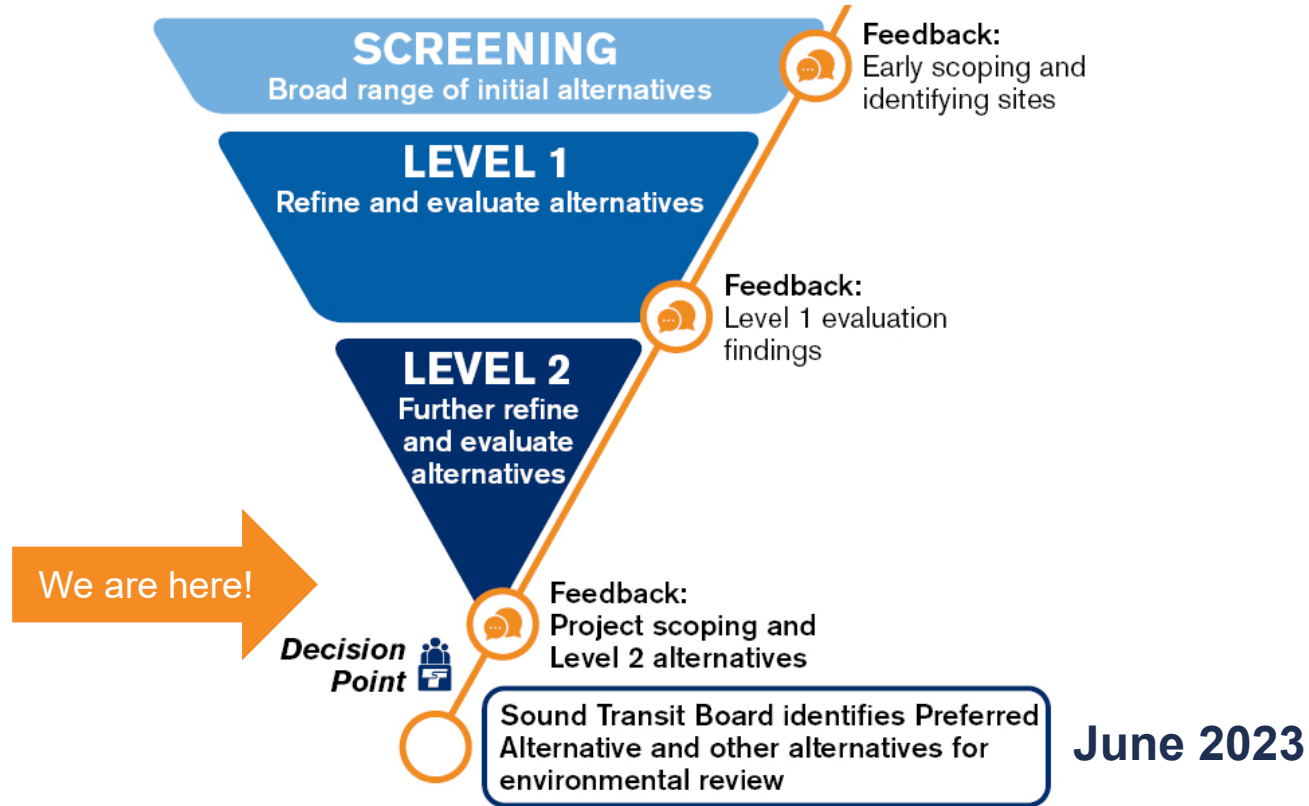
- Emerging risks due to delays to environmental review process with 3rd parties.
- Potential delay to accommodate engineering challenges over lengthy and varied geography.
- RE acquisition risks due to yet unknown ROW needs.
- Design-Bid-Build delivery assumed. Change to delivery method may impact schedule.

Everett Link Schedule



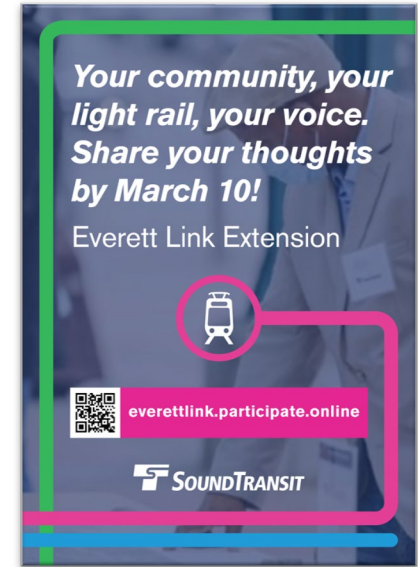
**Dates reflect an affordable schedule based on current financial projections and cost estimates, and a target schedule. Schedule is subject to change.*

Alternatives Development Process















SEPA EIS Scoping

- 45-day comment period, **January 23 - March 10**
 - Online open house
 - 3 public meetings (Feb 7, Feb 15, Mar 1)
 - 7 drop-in information sessions at various locations
 - Targeted briefings
- **Seeking feedback** on scope of EIS:
 - Preferred alternative and other alternatives for further study
 - Topics to study (e.g. economics, displacements, ecosystems)
 - Project purpose and need
- **Informs future Board decision** on what to study in EIS



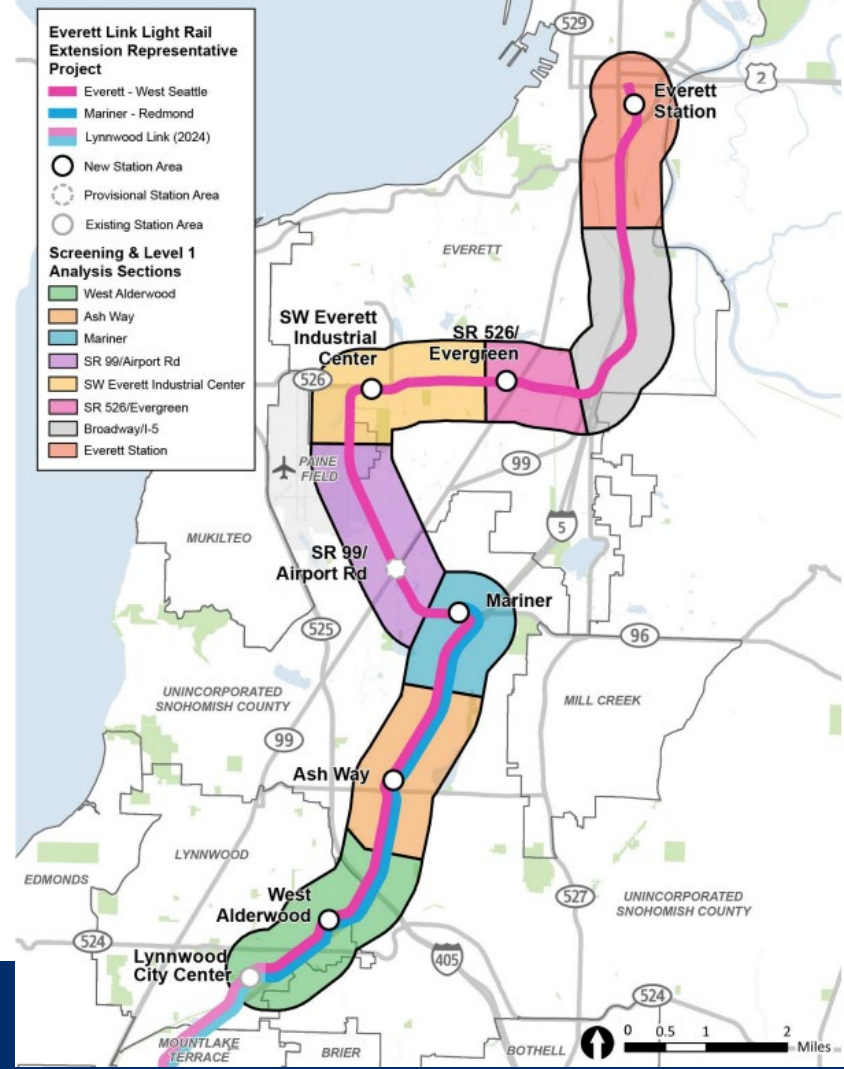
Criteria Category Summary

Stations and Alignment				OMF North	
Service Performance and Reliability	Connect Regional Centers	Equitable Mobility	Equitable Non-Motorized Station Access	Technical and Financial Feasibility	OMF Site Size and Suitability to Support Key OMF Functions
					
Increase Transit Connectivity and Capacity	Technical and Financial Feasibility	Support Growth at Station Areas	Healthy Natural, Built and Social Environment	Healthy Natural, Built and Social Environment	OMF Operations Considerations and Cost
					

EIS Scoping Alternatives

EVLE: Project Sections

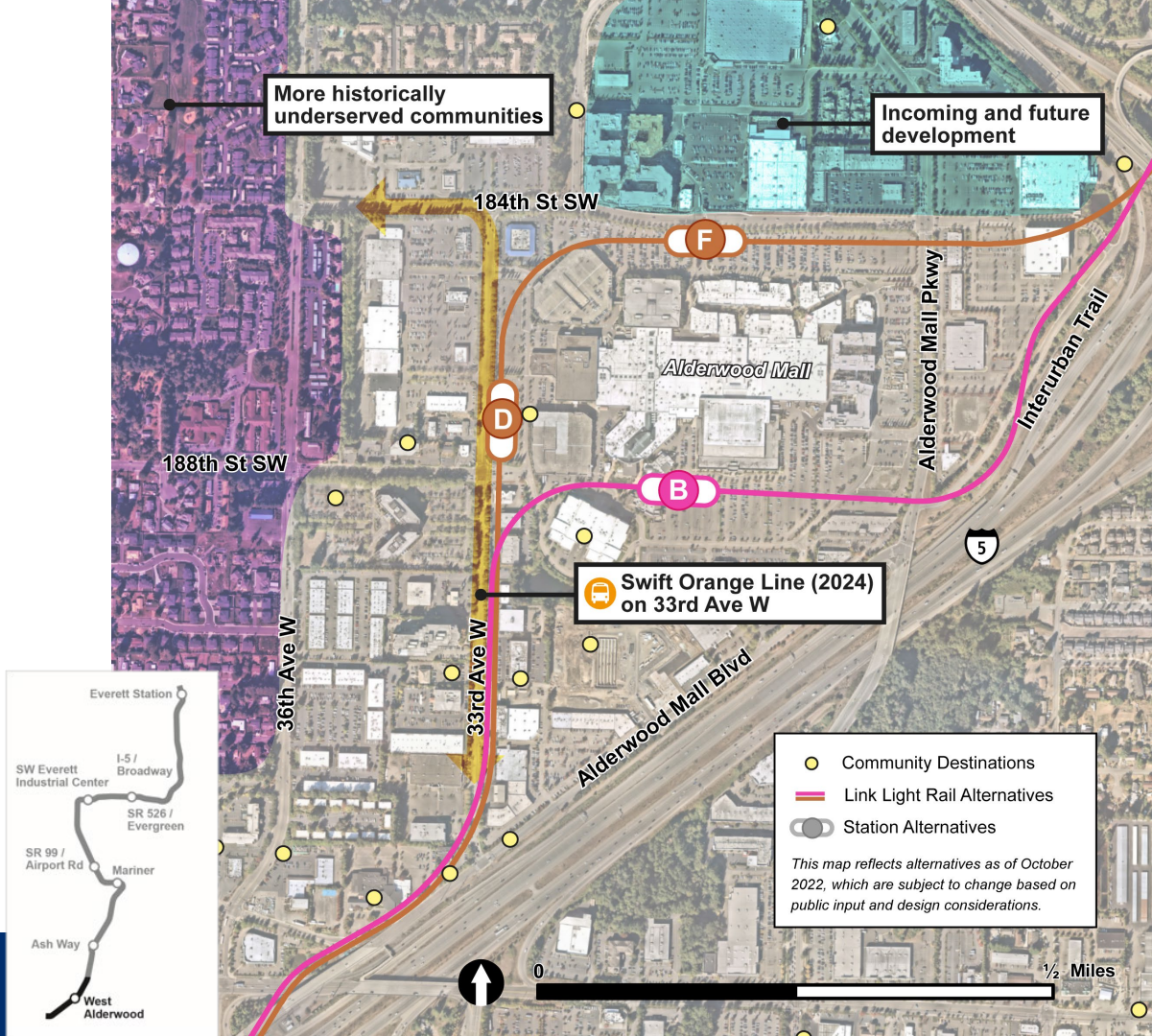
- Project divided into 8 sections for evaluation.
- Generally, each section includes all station alternatives for one station area and associated route alternatives.



West Alderwood

Key considerations:

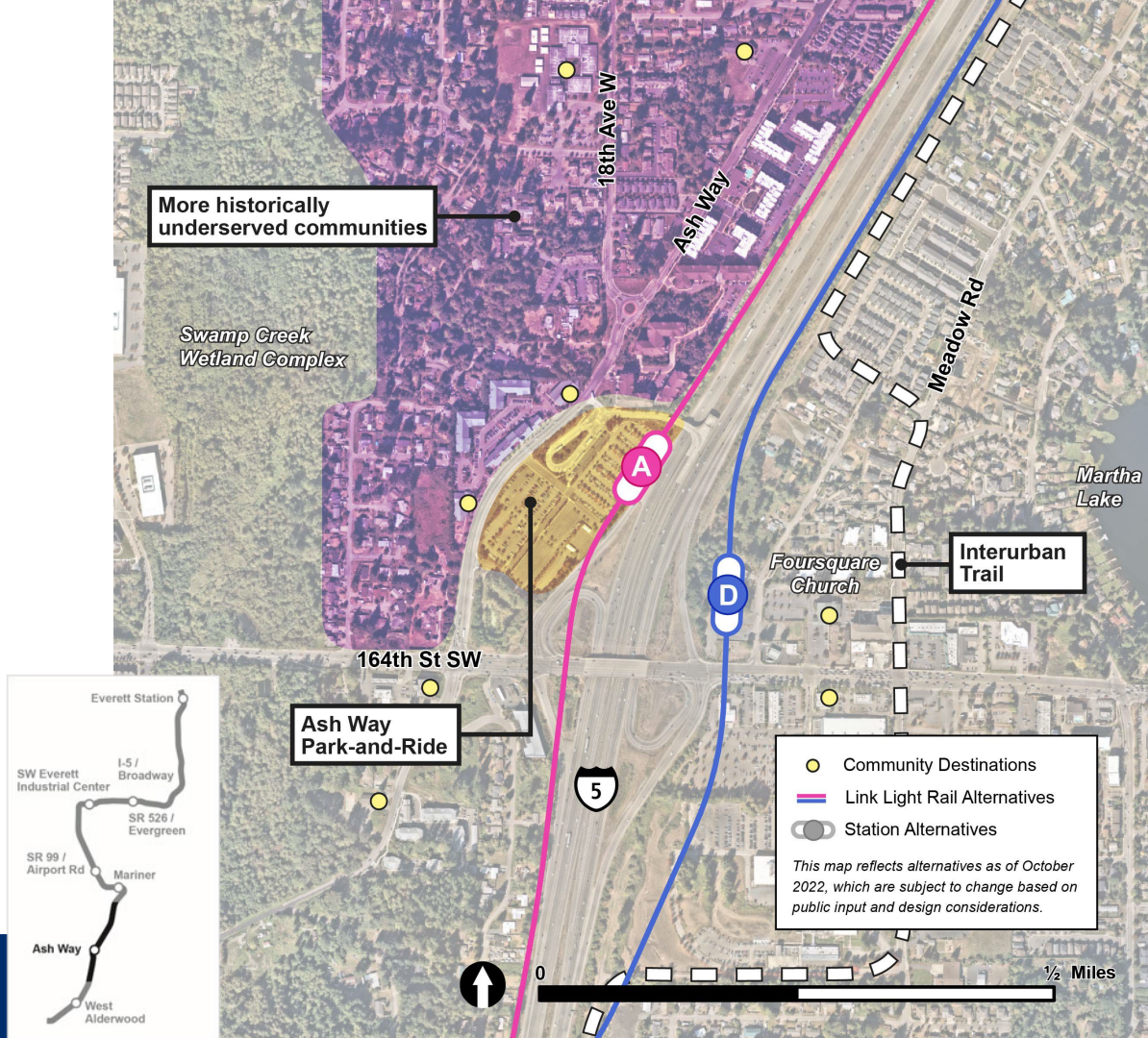
- Proximity to existing and planned commercial and residential uses
- TOD potential
- Transit integration



Ash Way

Key considerations:

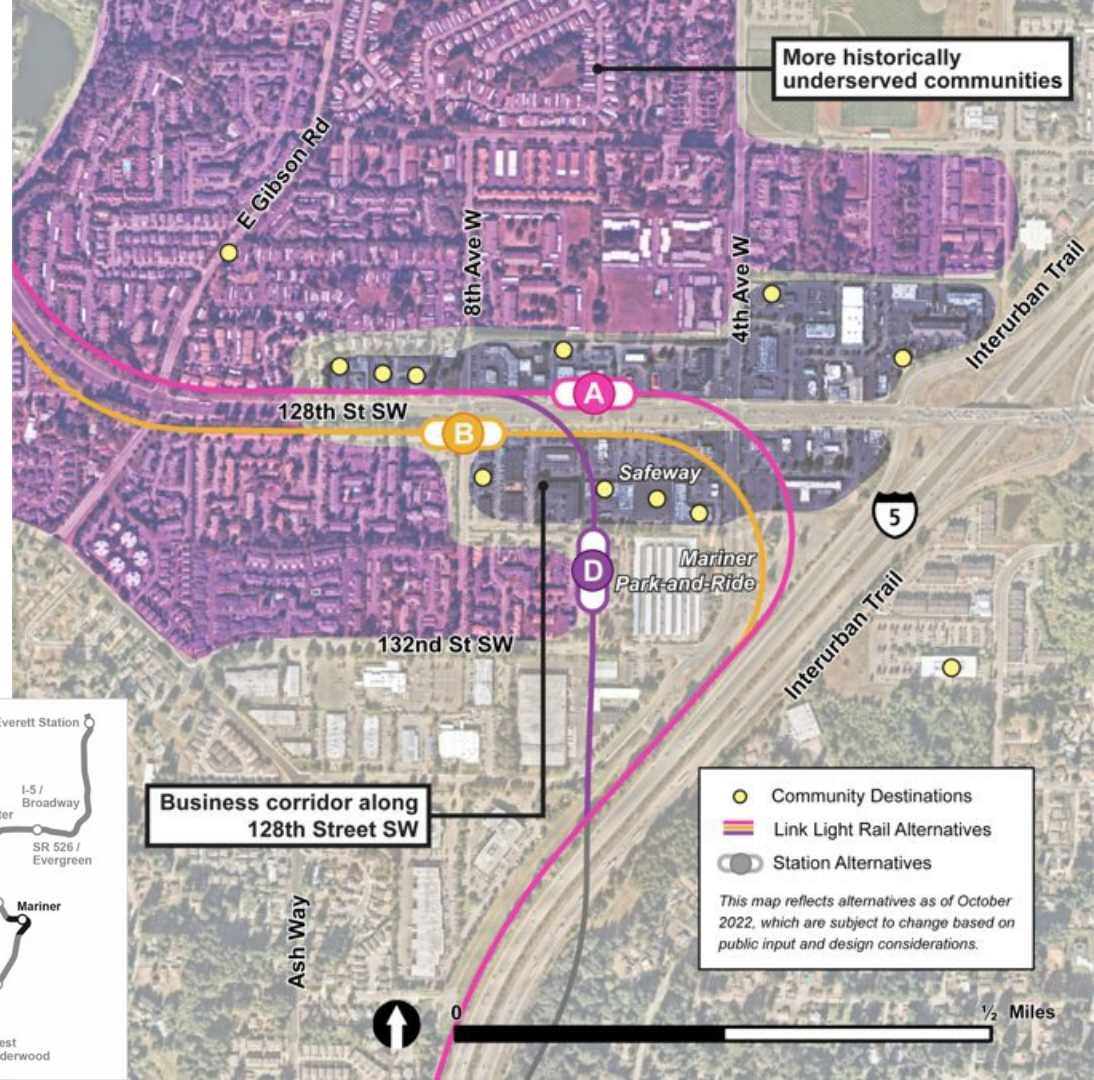
- Connection to Ash Way Park & Ride
- Proximity to historically underserved communities and Interurban Trail
- Potential new crossing by Snohomish County



Mariner

Key considerations:

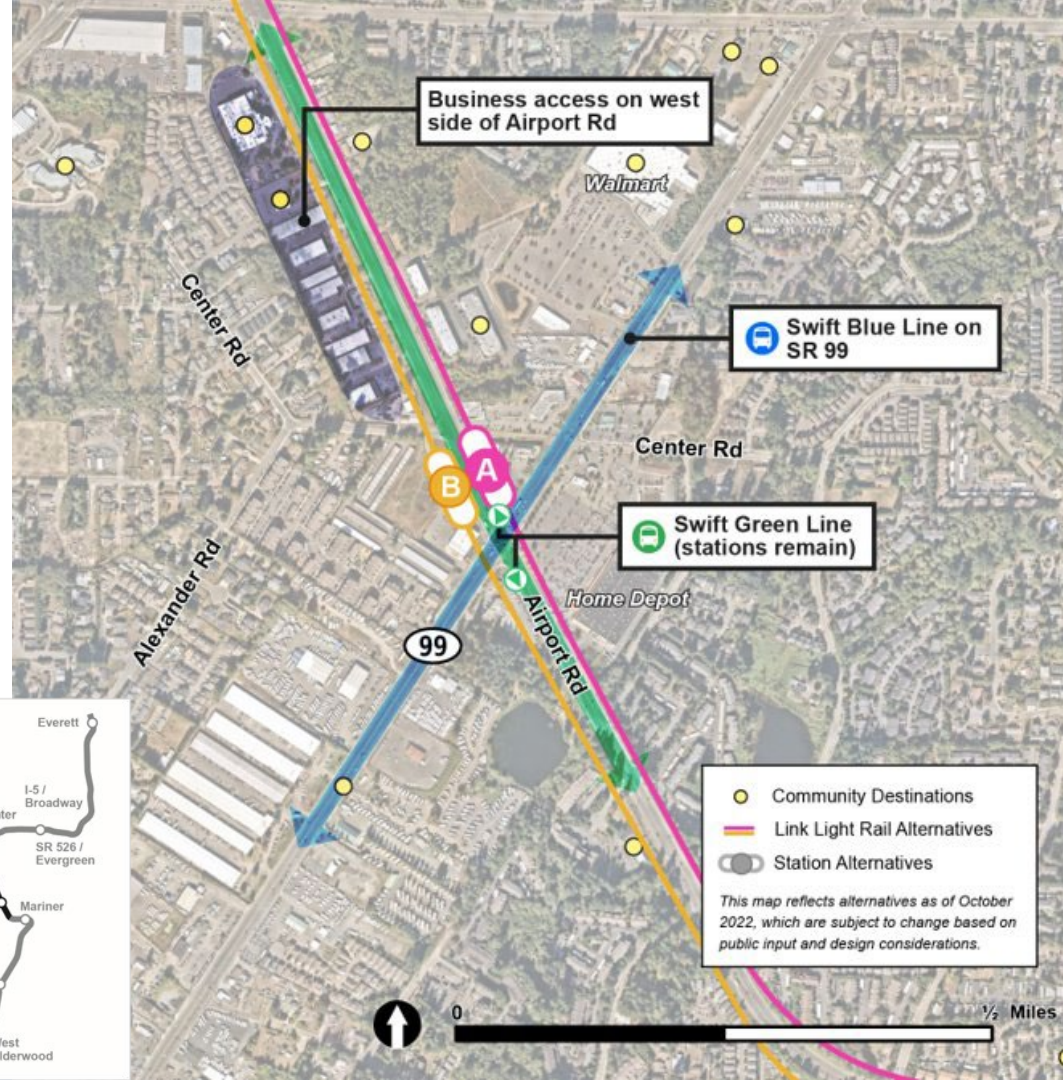
- Potential for transit-oriented development
- Opportunities for multimodal integration
- Commercial and residential property impacts



SR 99/Airport Road (Provisional)

Key considerations:

- Transit integration (2 Swift lines)
- Access and safety concerns at major intersection



SW Everett Industrial Center

Key considerations:

- Connections to job centers and residential communities
- All stations would accommodate space for shuttles to Paine Field Passenger Terminal



SR 526/Evergreen

Key considerations:

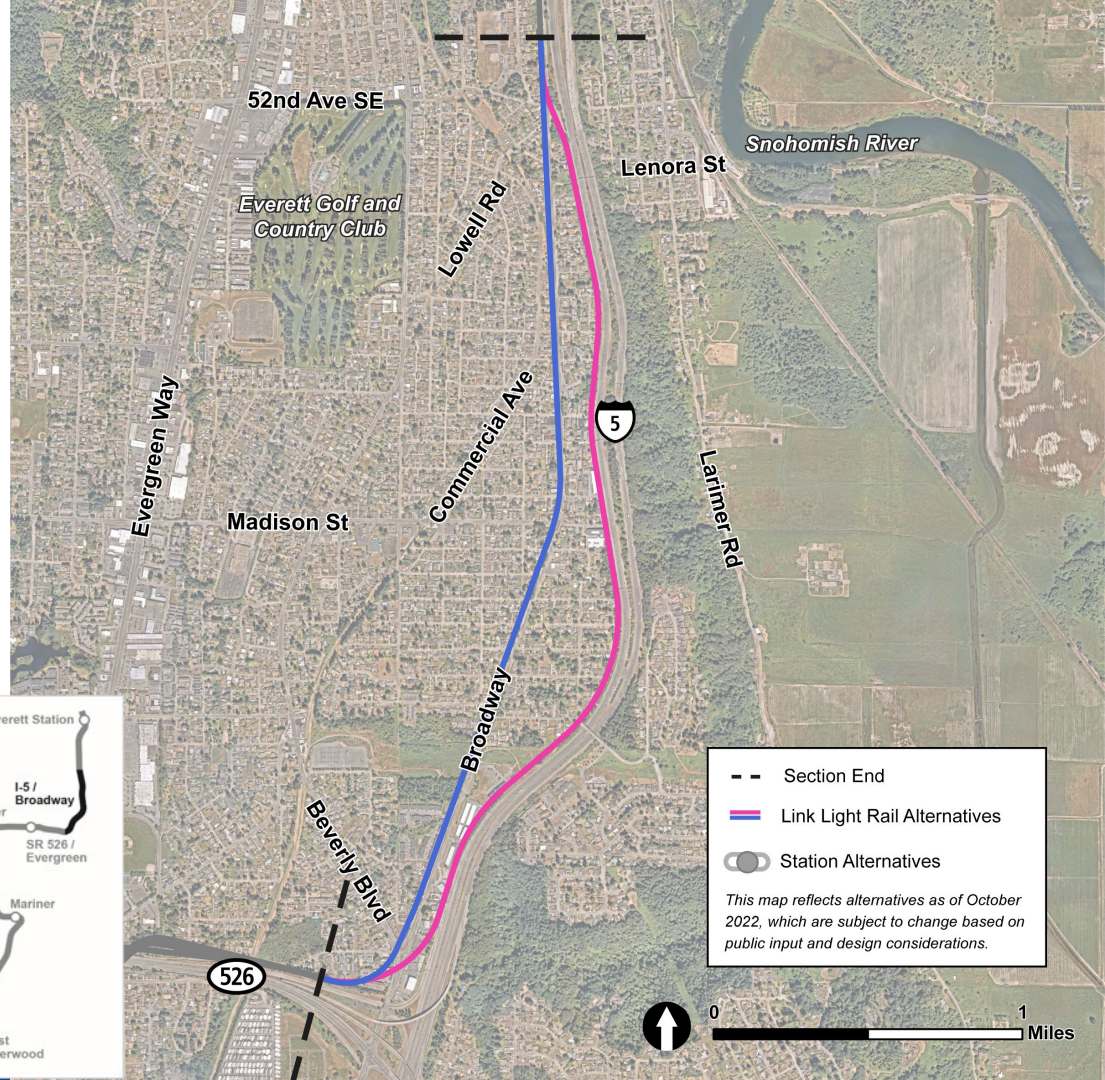
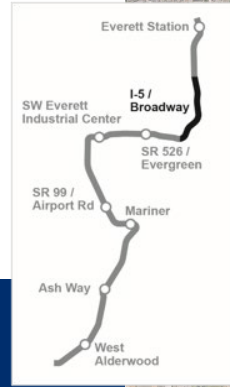
- Connections to residential communities and businesses
- Potential impacts to historically underserved communities
- Impacts to important community businesses
- Comparative cost



I-5 / Broadway Alignment

Key considerations:

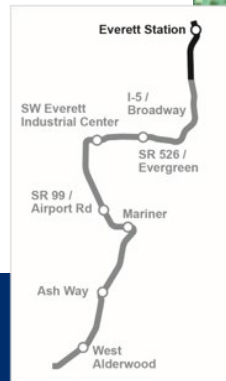
- Community disruption
- Constructability risks
- Comparative cost



Everett Station

Key considerations:

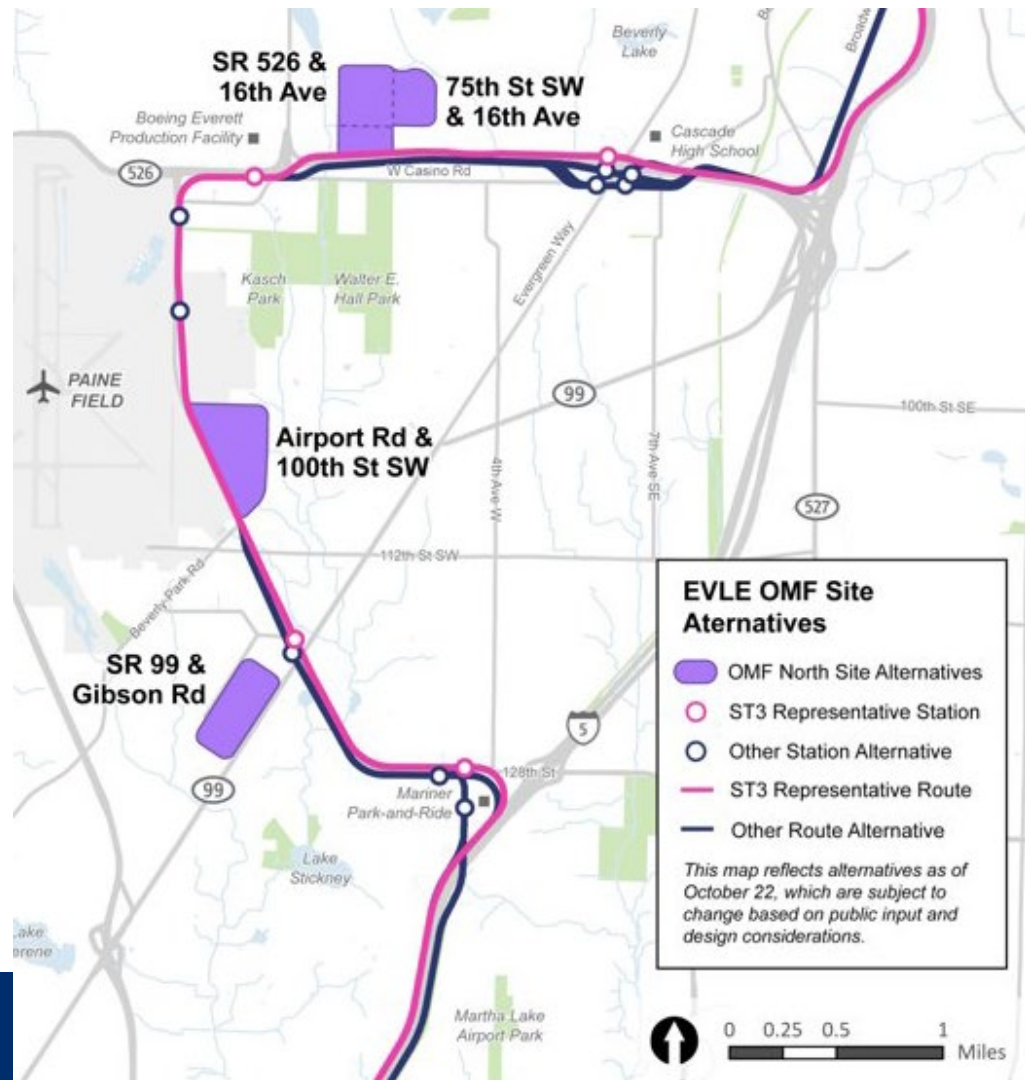
- Connection to downtown Everett
- Connection to existing transit center
- Commercial property impacts
- Comparative cost



OMF North

Key considerations:

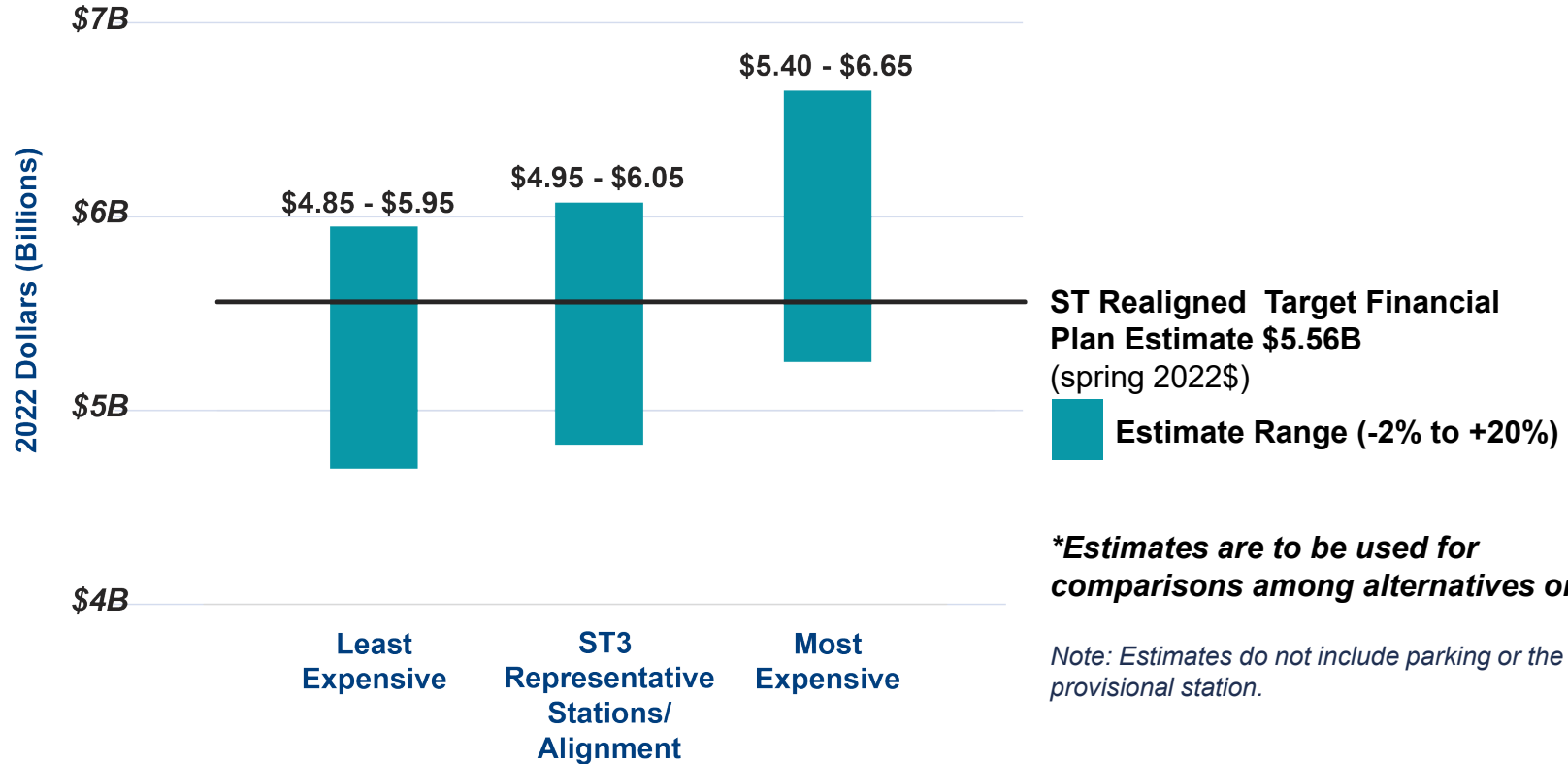
- Job/business displacements
- Environmental impacts & site development challenges
- Burdens on historically underserved communities
- Comparative cost estimates



Preliminary Comparative Cost Estimates

- **Inform comparison** of alternatives
- Based on **limited conceptual design** (1-2% design)
- Does not establish project budget, budget established at baselining
- Comparative cost estimates for the OMFN and end-to-end alignments are presented in a range of -2% to +20%
- The range is based on Sound Transit experience and the Association for Advancement of Cost Engineering International (AACEi) industry standards
- Reviewed by Independent Cost Consultant, TriUnity; no changes recommended for this phase

EVLE: Preliminary Comparative Cost Estimate*



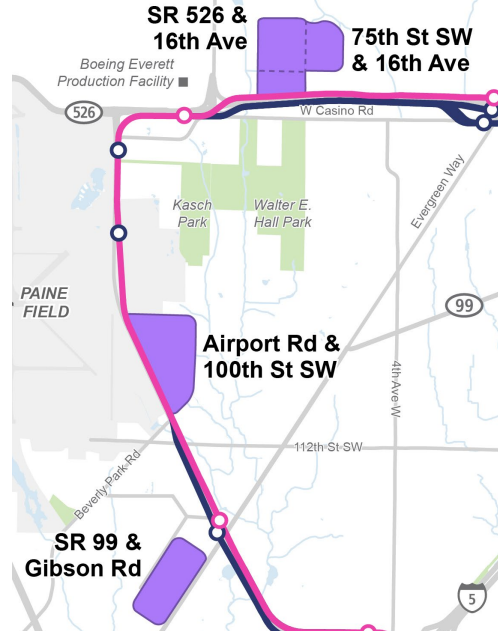
OMF North: Preliminary Comparative Cost Estimate*



ST Realigned Financial Plan Estimate \$1.43B
(spring 2022\$)

 **Estimate Range (-2% to +20%)**

**Estimates are to be used for comparisons among alternatives only.*



How to Submit Scoping Comments

- *Fill out the survey at: everettlink.participate.online*
- *Email us: everettlinkcomments@soundtransit.org*
- *Leave a voicemail: (425) 492-7218*
- *Send a letter:*

Everett Link Extension
Kathy Fendt
Sound Transit
401 S. Jackson St.
Seattle, WA 98104

March 10 is the end of the public scoping period, and the final day that you can submit a comment about this level of project planning.

Remember: All comments and feedback are public record

Next Steps

Preliminary schedule to reach a Preferred Alternative

Feb - March

Scoping period:

- Online open houses
- In person open house
- Tribal and agency Scoping meeting

April - May

Build consensus around Preferred Alternative and other alternatives to study in Draft EIS, including:

- Scoping summary report
- Community Advisory Group feedback
- Ongoing coordination with Tribes and agencies
- ELG recommendation to ST Board

June

ST Board:
Identifies Preferred Alternative and other alternatives for environmental review

Thank you.



 [*soundtransit.org*](https://soundtransit.org)

