

# Federal Way Link Extension



## Link Light Rail

**Angle Lake–Federal Way**

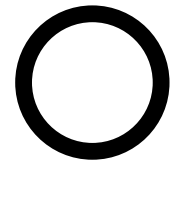
Surface

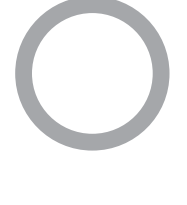
Elevated


**Other service**

Angle Lake–Seattle (in service)

Federal Way–Fife–Tacoma (2030)

 New station

 Existing station

 New parking

 Existing parking





# Sound Transit System Expansion

Link Light Rail

**Future service:**

Everett–Seattle–West Seattle

Redmond–Seattle–Mariner

Ballard–Seattle–Tacoma

Issaquah–Bellevue–South Kirkland

Tacoma Dome–Tacoma Community College

**In service:**

Univ. of Washington–Angle Lake

Tacoma Dome–Theater District

Sounder Commuter Rail

**Future service:**

DuPont–Lakewood

**In service:**

North Line (Everett–Seattle)

South Line (Lakewood–Seattle)

Bus

**Future service:**

Bus Rapid Transit (BRT)

**In service:**

ST Express bus (service re-evaluated annually)

New station or bus facility

P

Added parking

⊕

Station improvements

∞

Major transfer hub

○

Existing station or bus facility

P

Existing parking

○

Provisional light rail station

This map illustrates the Sound Transit System Expansion, showing proposed and existing transit routes across the Puget Sound region. The map includes the following details:

- Legend:**
  - Link Light Rail:**
    - Future service:** Everett–Seattle–West Seattle (red), Redmond–Seattle–Mariner (blue), Ballard–Seattle–Tacoma (green), Issaquah–Bellevue–South Kirkland (purple), Tacoma Dome–Tacoma Community College (orange).
    - In service:** Univ. of Washington–Angle Lake (light blue), Tacoma Dome–Theater District (light orange).
  - Sounder Commuter Rail:**
    - Future service:** DuPont–Lakewood (dark blue).
    - In service:** North Line (Everett–Seattle) (light purple), South Line (Lakewood–Seattle) (medium purple).
  - Bus:**
    - Future service:** Bus Rapid Transit (BRT) (yellow).
    - In service:** ST Express bus (service re-evaluated annually) (light blue).
- Map Symbols:**
  - New station or bus facility
  - P Added parking
  - ⊕ Station improvements
  - ∞ Major transfer hub
  - Existing station or bus facility
  - P Existing parking
  - Provisional light rail station
- Geographic Labels:** Everett, Downtown Everett, Mukilteo, SR 526/Evergreen, SW Everett, Industrial Center, SR 99/Airport Rd, Mariner, Ash Way, West Alderwood, Lynnwood City Center, Edmonds, Mountlake Terrace, Shoreline North/185th, Shoreline South/145th, Lake Forest Park, Kenmore, Bothell, Canyon Park, Woodinville, Brickyard, Kingsgate/Totem Lake, NE 130th, Northgate, Roosevelt, U District, University of Washington, Capitol Hill, Evergreen Point, NE 85th, Downtown Redmond, SE Redmond, Redmond Technology, Overlake Village, Bel-Red/130th, Spring District/120th, Wilburton, North Sammamish, South Sammamish, Issaquah Highlands, Issaquah, NE 44th, Eastgate, Richards Rd, Bellevue Downtown, East Main, South Bellevue, Mercer Island, Judkins Park, Stadium, S Graham St, Othello, Rainier Beach, Tukwila/International Blvd, Boeing Access Rd, South Renton, Kent, Auburn, Sumner, Bonney Lake, Puyallup, South Hill, Fife, East Tacoma, Tacoma Dome, St Joseph, Anisworth, Sprague, Union, Steilens, Pearl, Tacoma Community College, Hilltop District, 6th Ave, Tacoma General, Stadium District, S 4th, Old City Hall, Theater District, Convention Center, Union Station, S 25th, South Tacoma, Lakewood Towne Center, Lakewood, Tillicum, DuPont.
- Timeline Markers:** 2021, 2022, 2023, 2024, 2030, 2031, 2035, 2036, 2039.

Date



# Construction impacts

## Key concerns during construction

**Visual**

**Security**

**Noise**

**Traffic  
Detours**

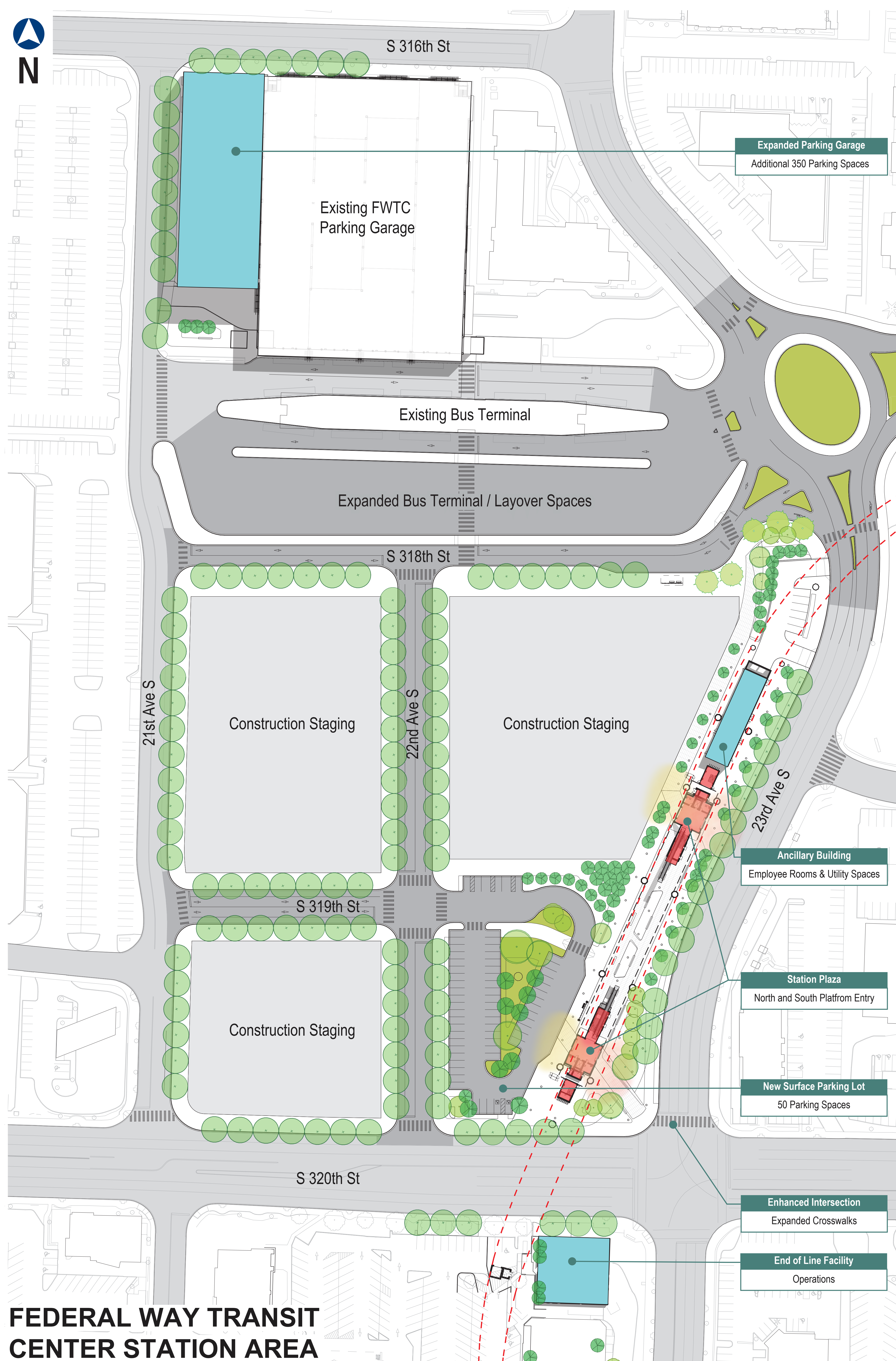
### Noise mitigation

- Construction noise wall
- Use broadband back up alarms
- Limit vehicle idling
- Enclose stationary equipment



# Federal Way Transit Center

## Station area



**FEDERAL WAY TRANSIT  
CENTER STATION AREA**

Located in the city center, the elevated Federal Way Transit Center station area currently serves several Sound Transit, King County Metro and Pierce Transit bus routes. An expansion of the existing parking garage will accommodate additional demand when light rail opens. A new street grid enhances access to the station and provides an opportunity for future development.

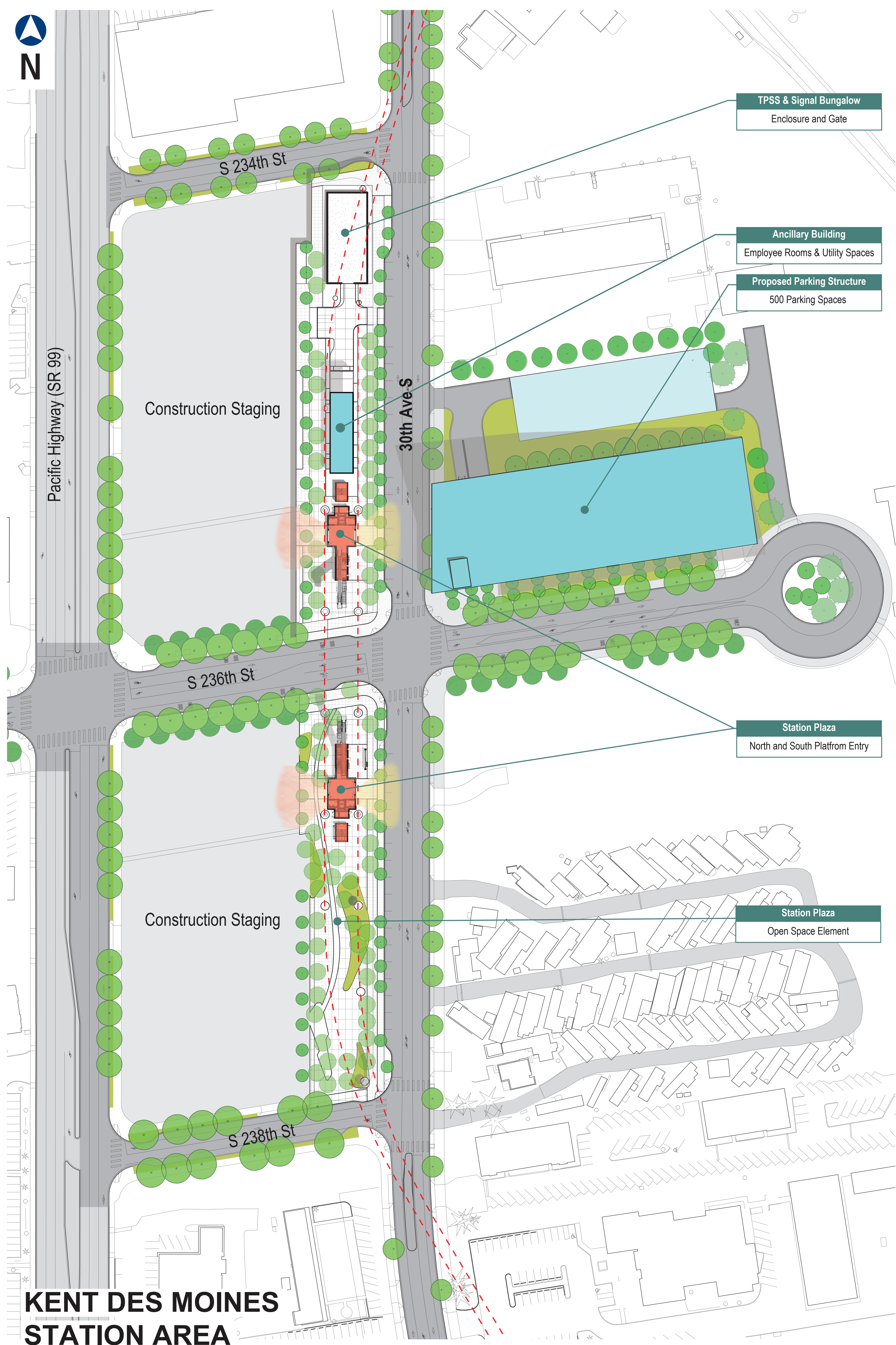


STart, Sound Transit's art program, creates integrated artworks to enhance the rider experience. Station Art will feature original works from Catherine Widgery, Donald Lipski and Christine Ngyuen.



# Kent / Des Moines

## Station area



The elevated Kent/Des Moines station will provide access to Highline College and surrounding neighborhoods and businesses. The station will have three landscaped streets to promote easy access by walking, bicycling and transit. Two large plaza areas will feature landscaping, seating and public art. An additional plaza near the garage will include a covered seating area and space on the street for food trucks.

STart, Sound Transit's art program, creates integrated artworks to enhance the rider experience. Station Art will feature original works from Norman Lee and Shane Allbritton, Michelle de la Vega and Christopher Paul Jordan.





# South 272nd Street

## Station area



Located at the existing Star Lake Park-and-Ride site, the South 272nd station features a garage that will replace the existing surface parking lot. We will rebuild a portion of South 272nd Street to improve vehicle/ bus access to the station. Portions of 26th Avenue South and 28th Avenue South will have new sidewalks with landscaping. We will also build a pedestrian/ bicycle path to the station plaza and connections to the existing freeway bus stop.



STart, Sound Transit's art program, creates integrated artworks to enhance the rider experience. Station Art will feature original works from Christopher Paul Jordan and Tory and Eroyn Franklin.



# Federal Way Link Extension Timeline

