

Federal Way Link Extension

Draft Environmental Impact Statement

CONCEPTUAL DESIGN DRAWINGS

Appendix F



Contents

SR 99 Alternative: pp. 1-25

- S 216th West Station Option: pp. 26-31
- S 216th East Station Option: pp. 32-36
- Kent/Des Moines SR 99 Median Station Option: pp. 37-42
- Kent/Des Moines SR 99 East Station Option: pp. 43-49
- Kent/Des Moines HC Campus Station Option: pp. 50-57
- Kent/Des Moines HC Campus Station Option from S 216th West Station Option: pp. 58-63
- S 260th West Station Option: pp. 64-71
- S 260th East Station Option: pp. 72-78
- S 272nd Redondo Trench Station Option: pp. 79-88
- Federal Way SR 99 Station Option: pp. 89-93

I-5 Alternative: pp. 94-118

- Kent/Des Moines At-Grade Station Option: pp. 119-124
- Kent/Des Moines SR 99 East Station Option: pp. 125-130
- Landfill Median Alignment Option: pp.131-134
- Federal Way I-5 Station Option: pp. 135-138
- Federal Way S 320th Park-and-Ride Station Option: pp. 139-143

SR 99 to I-5 Alternative: pp. 144-151

I-5 to SR 99 Alternative: pp. 152-160

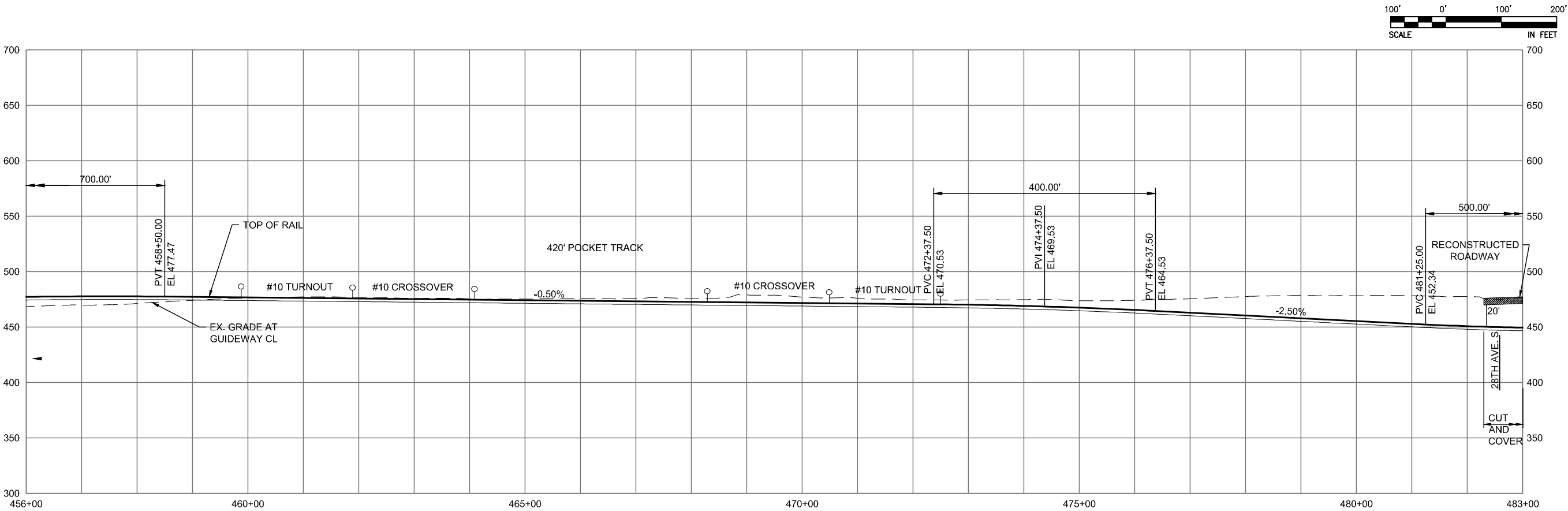
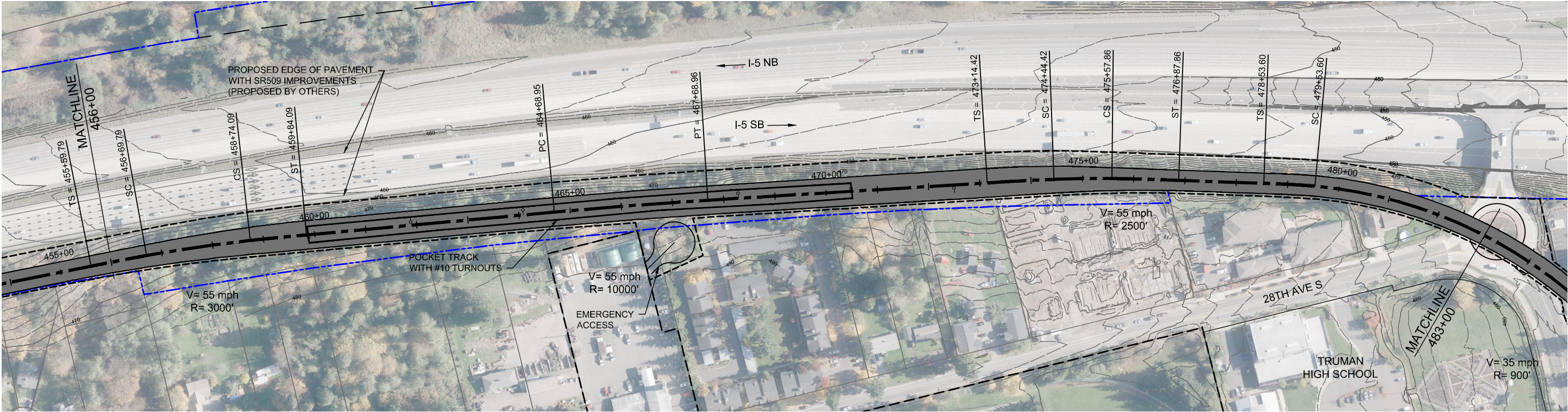
- S 260th West Station Option: pp. 161-163

This page intentionally left blank.

DRAFT EIS - CONCEPTUAL DESIGN I-5 ALTERNATIVE

This page intentionally left blank.

SOUND TRANSIT FEDERAL WAY LINK EXTENSION



2/25/2015 12:32:38 PM
C:\WORKING\SEAD\07842A_P\FILE 15 MAINLINE.DWG

BRHARRIS

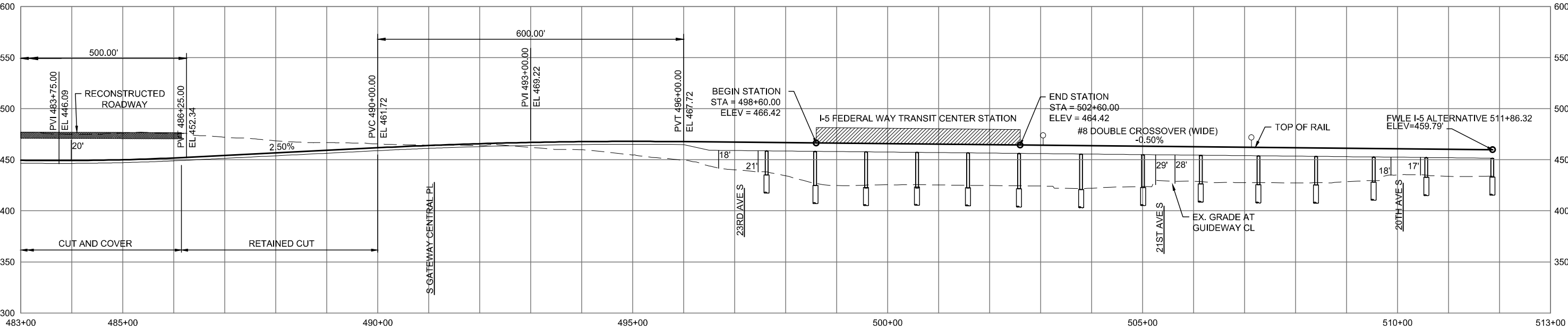
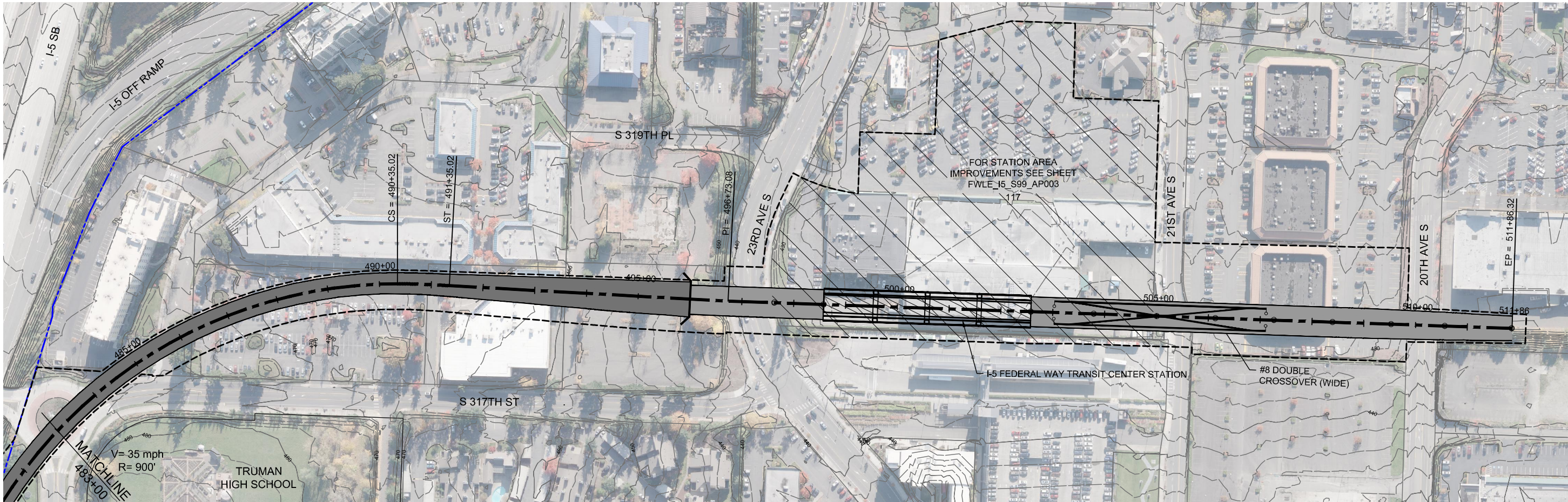


DRAFT EIS - CONCEPTUAL DESIGN
TRACK PLAN & PROFILE AND ROADWAY RECONSTRUCTION
I-5 ALTERNATIVE
STA 456+00 TO STA 483+00

APRIL 2015

I5-A15-PP15
111

SOUND TRANSIT FEDERAL WAY LINK EXTENSION



DRAFT EIS - CONCEPTUAL DESIGN
TRACK PLAN & PROFILE AND ROADWAY RECONSTRUCTION
I-5 ALTERNATIVE
STA 483+00 TO STA 511+86



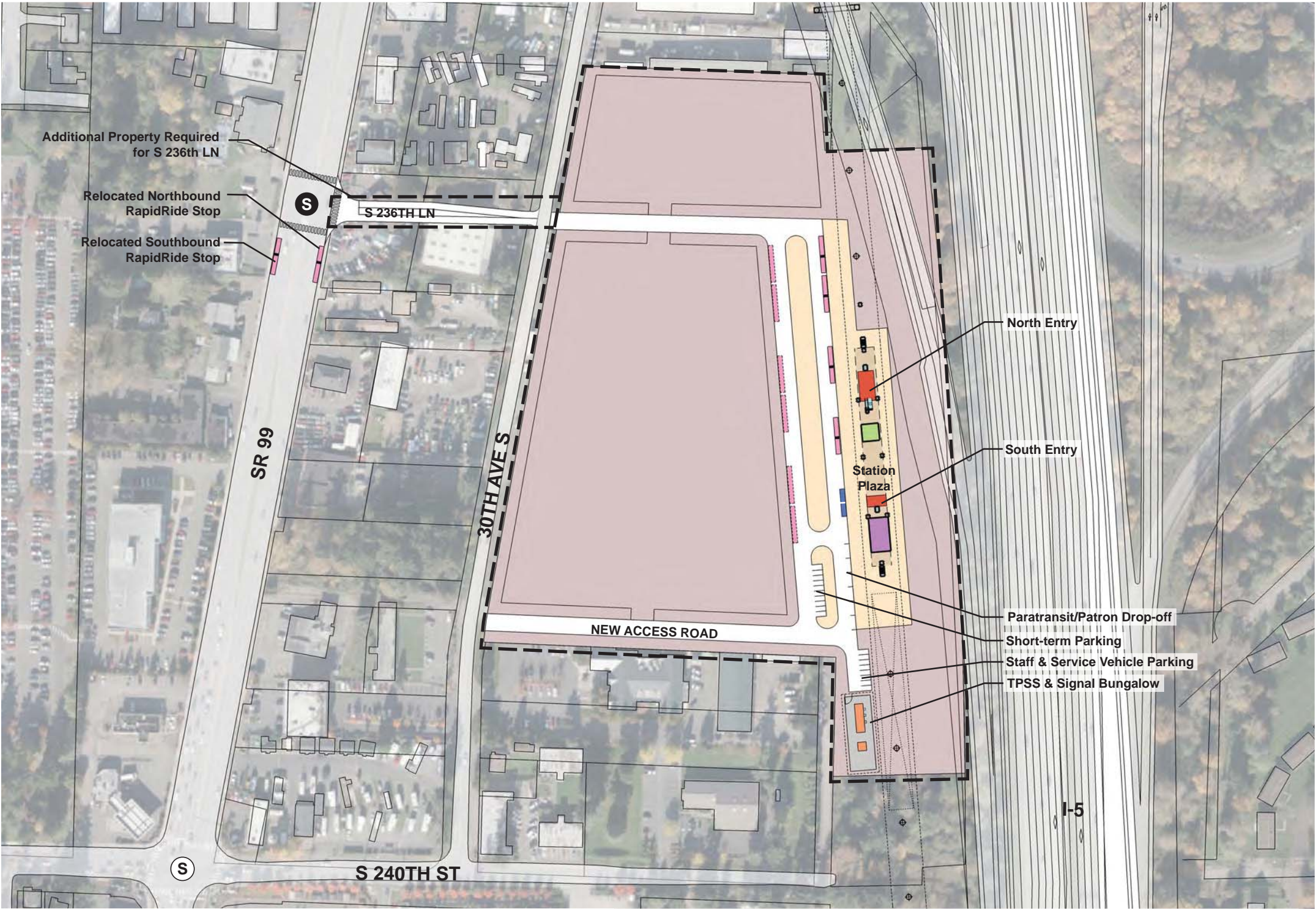
APRIL 2015

I5-A17-PP16
112

2/25/2015 12:32:48 PM
C:\WORKING\SEAD\07842A_P\FILE I5 MAINLINE.DWG

SOUND TRANSIT FEDERAL WAY LINK EXTENSION

7/17/2014 11:36:52 AM J:\HAMMERQUIST\3\BMM\PROJECTS\67612\FEDERAL WAY TRANSIT EXTENSION\2 CLIENT\2 DATA\INCOMING HDR\40717 UPDATED\TITLEBLOCK\DES_TTLB\KJ.DWG



- STATION PLAZA

VERTICAL CIRCULATION

TICKETING / ENTRY HALL

PLATFORM

ANCILLARY SPACES

TPSS
- BUS LAYOVER

BUS PICK-UP / DROP OFF

PARATRANSIT

BICYCLE STORAGE

CONSTRUCTION STAGING / PARKING

- STATION AREA FOOTPRINT

S

SIGNALIZED INTERSECTION (EXISTING)

S

SIGNALIZED INTERSECTION (PROPOSED)

ASSUMPTIONS:

Kent/Des Moines I-5 Station	
Alternative(s)	I-5
Boardings	2,000
Boardings (interim terminus)	3,000
Station Configuration	
Terminus / In-Line	Interim Terminus
Station Type	Center Platform - Elevated
Platform Width	34'
Tail track	900'
Crossover	Yes
TPSS	Yes
Program	
KC Metro Ancillary Spaces (SF)	200
ST Ancillary Spaces (SF)	1,800
Total Ancillary Spaces (SF)	2,000
Vertical Circulation	
# of entrances	2
# of escalators	1
# of staircases (patron)	1
# of elevators	2
# of emergency stairs	2
Bus/ Paratransit Facilities	
Bus bays (KCM)	2 bays, one 60' coach each
Bus bays (ST)	1 bay, two 60' coaches
Rapid Ride	On-street at SR 99
Bus layover (KCM)	2 bays, two 60' coaches each
Bus layover (ST)	1 bay, two 60' coaches
Paratransit spaces	1 permanent, 1 interim
Communications Facility	Tier 2
Parking & Amenities	
Bike storage	900 SF
Patron drop-off	6 spaces
Short-term patron parking	7 to 10 spaces
Staff parking	4 spaces
Service/emerg. vehicle park.	2 spaces, separate lot
Signal bungalow / TPSS park.	2 spaces, dedicated
Long-term patron parking	500 spaces (structure)
Temporary patron parking*	500 spaces (surface)
Total proposed patron parking*	1000 Spaces

*Only required for interim terminus condition

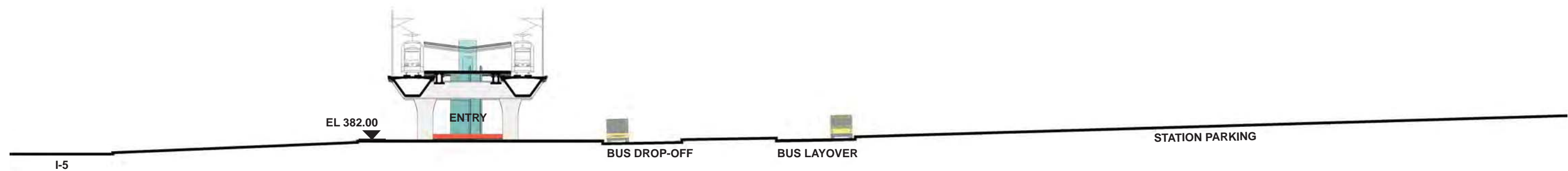


DRAFT EIS - CONCEPTUAL DESIGN
KENT/DES MOINES I-5 STATION
SITE PLAN

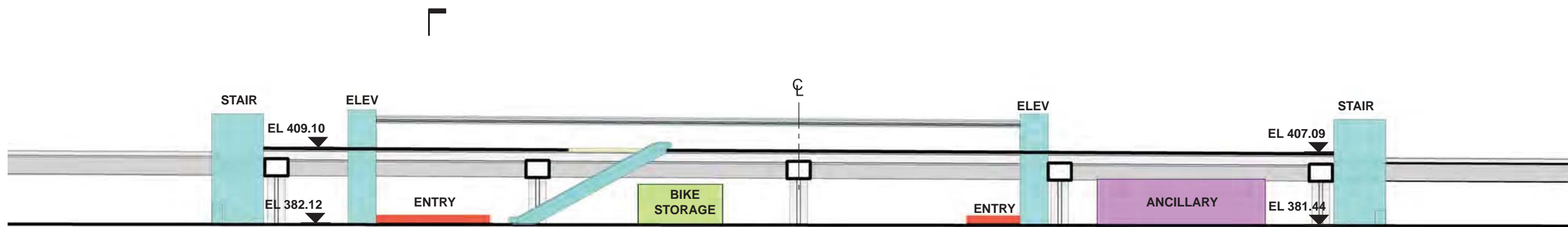
APRIL 2015

FWLE_I5_AP001
113

SOUND TRANSIT FEDERAL WAY LINK EXTENSION

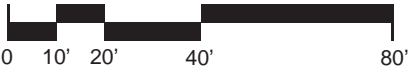


SECTION LOOKING SOUTH



SECTION LOOKING EAST

- | | |
|------------------------|--------------------------------|
| STATION PLAZA | BUS LAYOVER |
| VERTICAL CIRCULATION | BUS PICK-UP / DROP OFF |
| TICKETING / ENTRY HALL | PARATRANSIT |
| PLATFORM | BICYCLE STORAGE |
| ANCILLARY SPACES | CONSTRUCTION STAGING / PARKING |
| TPSS | |



7/17/2014 11:26:52 AM JHAMMERQUIST G:\BWA\PROJECTS\67612\FEDERAL WAY TRANSIT EXTENSION\2 CLIENT\2 DATA\INCOMING HDR\40717 UPDATED TITLEBLOCK.DWG

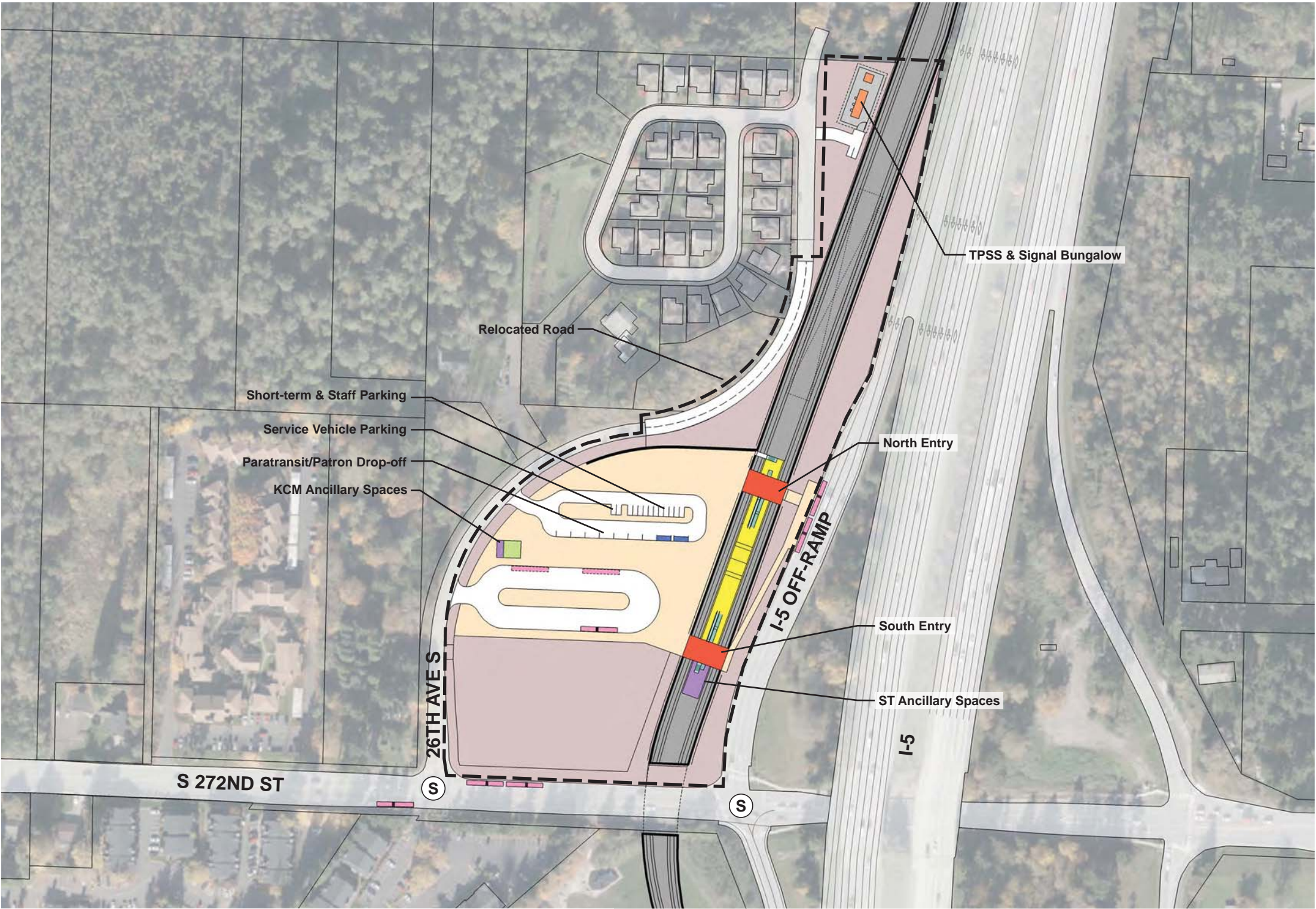


DRAFT EIS - CONCEPTUAL DESIGN
KENT/DES MOINES I-5 STATION
SECTIONS

APRIL 2015
FWLE_I5_AX001
114

SOUND TRANSIT FEDERAL WAY LINK EXTENSION

7/17/2014 11:36:52 AM JHAMMERQUIST G:\BWA PROJECTS\67612 FEDERAL WAY TRANSIT EXTENSION\2 CLIENT\2 DATA\INCOMING HDR\40717 UPDATED TITLEBLOCK\DES_TTLB\K.DWG



- STATION PLAZA

VERTICAL CIRCULATION

TICKETING / ENTRY HALL

PLATFORM

ANCILLARY SPACES

TPSS
- BUS LAYOVER

BUS PICK-UP / DROP OFF

PARATRANSIT

BICYCLE STORAGE

CONSTRUCTION STAGING / PARKING
- S

SIGNALIZED INTERSECTION (EXISTING)

S

SIGNALIZED INTERSECTION (PROPOSED)

ASSUMPTIONS:

S 272nd Star Lake Station	
Alternative(s)	I-5
Boardings	2,000
Boardings (interim terminus)	4,000
Station Configuration	
Terminus / In-Line	Interim Terminus
Station Type	Center Platform - Trench
Platform Width	34'
Tail track	900'
Crossover	Yes
TPSS	Yes
Program	
KC Metro Ancillary Spaces (SF)	200
ST Ancillary Spaces (SF)	1,800
Total Ancillary Spaces (SF)	2,000
Vertical Circulation	
# of entrances	2
# of escalators	2
# of staircases (patron)	2
# of elevators	2
# of emergency stairs	2
Bus/ Paratransit Facilities	
Bus bays (KCM)	1 bay, one 60' coach. Maintain existing bays at I-5 offramp and S 272nd Street.
Bus bays (ST)	N/A
Rapid Ride	N/A
Bus layover (KCM)	2 bays, one 60' coach each
Bus layover (ST)	N/A
Paratransit	1 permanent, 1 interim
Communications Facility	Tier 2
Parking & Amenities	
Bike storage	900 SF
Patron drop-off	6 spaces
Short-term patron parking	7 to 10 spaces
Staff parking	4 spaces, share w/short trm
Service/emerg. vehicle park.	2 spaces, separate lot
Signal bungalow / TPSS park.	2 spaces, dedicated
Existing patron parking	540 spaces
Additional patron parking	700 spaces
Total proposed patron parking	1240 spaces (structure)

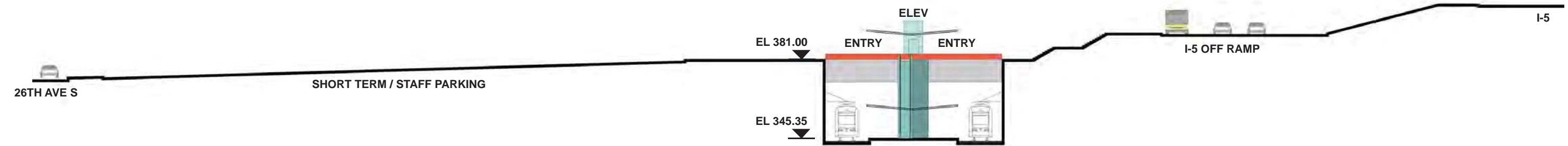


DRAFT EIS - CONCEPTUAL DESIGN
S 272ND STAR LAKE STATION
SITE PLAN

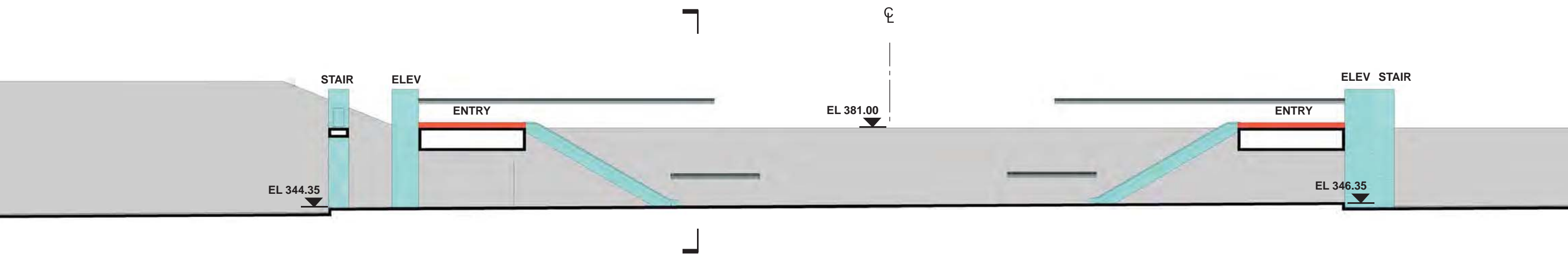
APRIL 2015

FWLE_I-5_AP002
115












SOUND TRANSIT FEDERAL WAY LINK EXTENSION

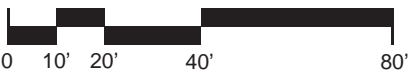


SECTION LOOKING NORTH



SECTION LOOKING EAST

- | | |
|--|--|
|  STATION PLAZA |  BUS LAYOVER |
|  VERTICAL CIRCULATION |  BUS PICK-UP / DROP OFF |
|  TICKETING / ENTRY HALL |  PARATRANSIT |
|  PLATFORM |  BICYCLE STORAGE |
|  ANCILLARY SPACES |  CONSTRUCTION STAGING / PARKING |
|  TPSS | |

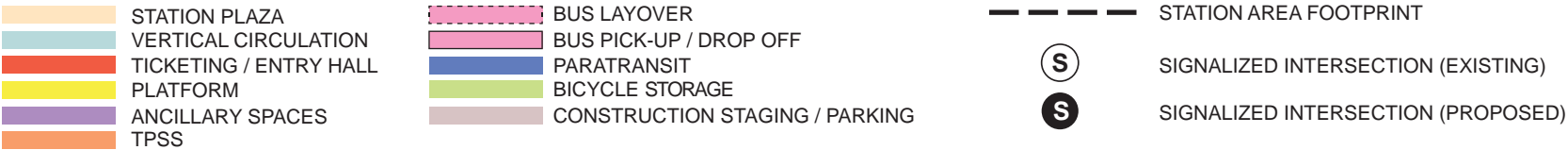
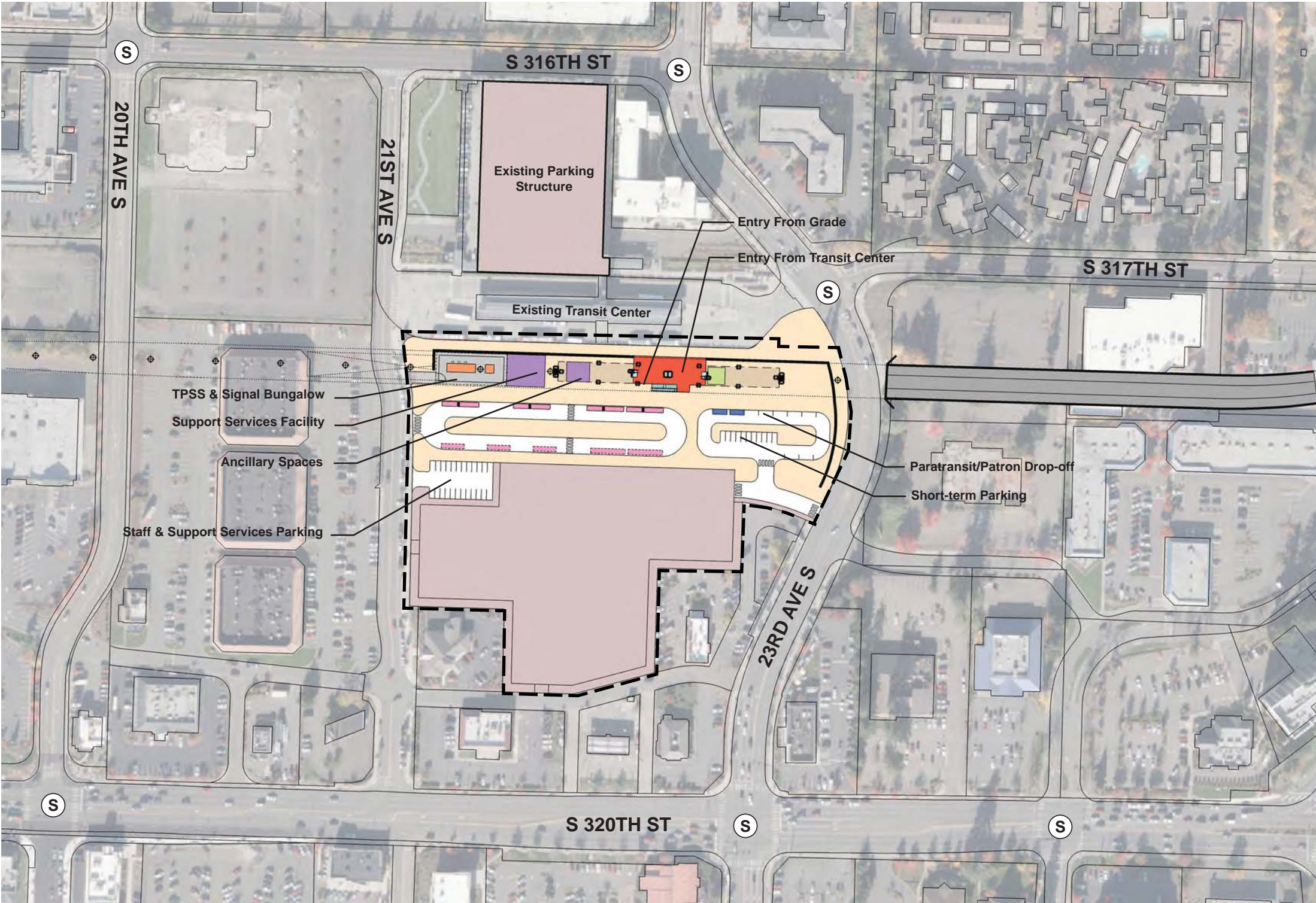


DRAFT EIS - CONCEPTUAL DESIGN
S 272ND STAR LAKE STATION
SECTIONS

APRIL 2015
FWLE_I-5_AX002
116

7/17/2014 11:36:52 AM JHAMMERQUIST G:\BWA PROJECTS\67612 FEDERAL WAY TRANSIT EXTENSION\2 CLIENT\2 DATA\INCOMING HDR\40717 UPDATED TITLEBLOCKS_TTLB\K.DWG

SOUND TRANSIT FEDERAL WAY LINK EXTENSION

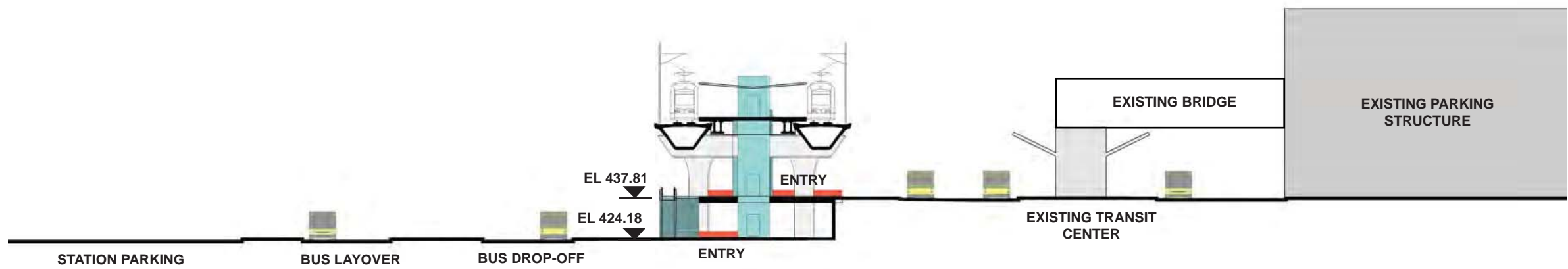


ASSUMPTIONS:

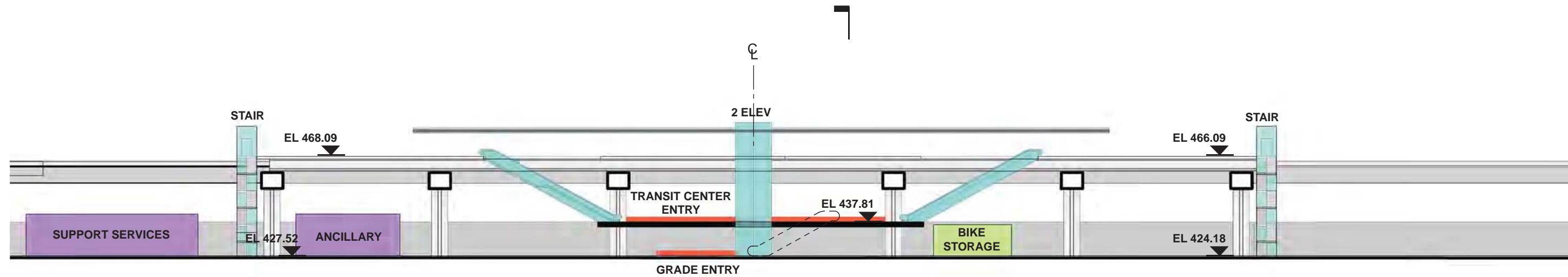
Federal Way Transit Center Station	
Alternative(s)	I-5; SR 99 to I-5
Boardings	9,000
Station Configuration	
Terminus / In-Line	Terminus
Station Type	Center Platform - Elevated
Platform Width	34'
Tail track	900'
Crossover	Yes
TPSS	Yes
Program	
KC Metro Ancillary Spaces (SF)	200
ST Ancillary Spaces (SF)	1,800
Support Services (SF)	5,000
Total Ancillary Spaces (SF)	7,000
Vertical Circulation	
# of entrances	2
# of escalators	3
# of staircases (patron)	3
# of elevators	2
# of emergency stairs	2
Bus/ Paratransit Facilities	
Bus bays (KCM)	2 bays, one 60' coach each
Bus bays (ST)	1 bay, two 60' coaches
Rapid Ride	Transit Island (Existing)
Bus layover (KCM)	3 bays, one 40' coach each 5 bays, one 60' coach each (relocated from transit ctr.)
Bus layover (ST)	1 bay, two 60' coaches
Paratransit spaces	2 spaces
Communications Facility	Tier 3
Parking & Amenities	
Bike storage	900 SF
Patron drop-off	6 spaces
Short-term patron parking	7 to 10 spaces
Staff parking	4 spaces
Support Services parking	15 spaces
Service/emerg. vehicle park.	2 spaces, separate lot
Signal bungalow / TPSS park.	2 spaces, dedicated
Existing patron parking	1,190 spaces
Additional patron parking	400 spaces
Total proposed patron parking	1590 spaces (structure)



SOUND TRANSIT FEDERAL WAY LINK EXTENSION

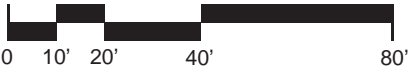


SECTION LOOKING WEST



SECTION LOOKING NORTH

- | | | | |
|--|------------------------|--|--------------------------------|
| | STATION PLAZA | | BUS LAYOVER |
| | VERTICAL CIRCULATION | | BUS PICK-UP / DROP OFF |
| | TICKETING / ENTRY HALL | | PARATRANSIT |
| | PLATFORM | | BICYCLE STORAGE |
| | ANCILLARY SPACES | | CONSTRUCTION STAGING / PARKING |
| | TPSS | | |

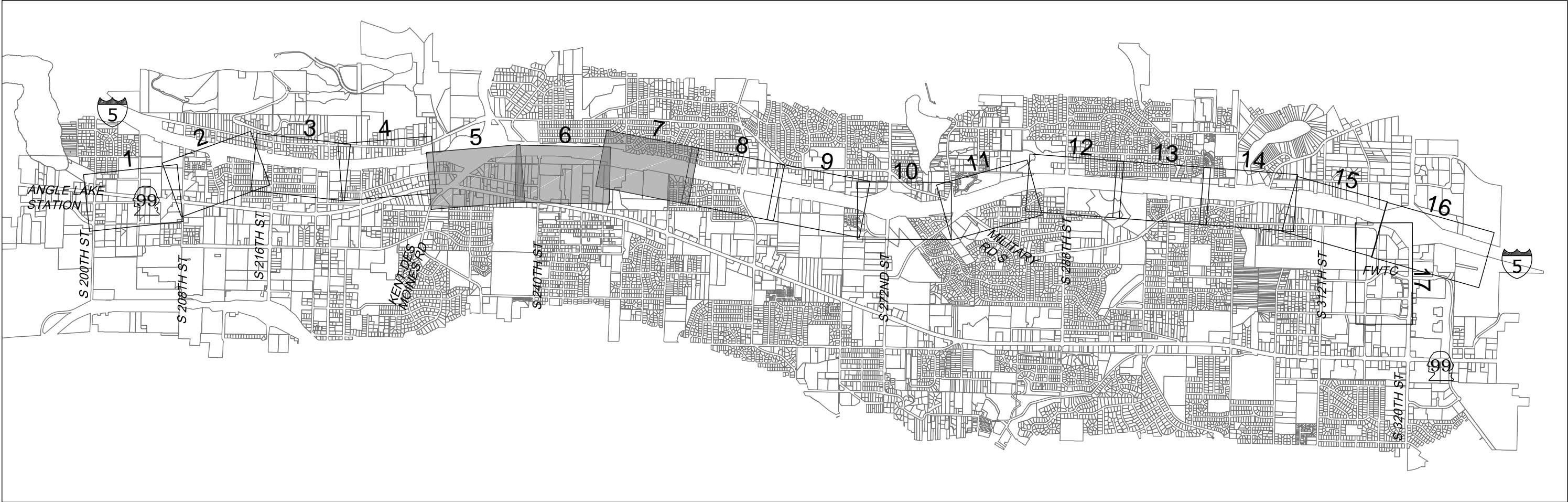


DRAFT EIS - CONCEPTUAL DESIGN
FEDERAL WAY TRANSIT CENTER STATION
SECTIONS

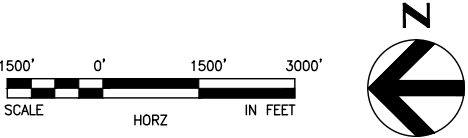
APRIL 2015

FWLE_I-5_AX003
118

SOUND TRANSIT FEDERAL WAY LINK EXTENSION



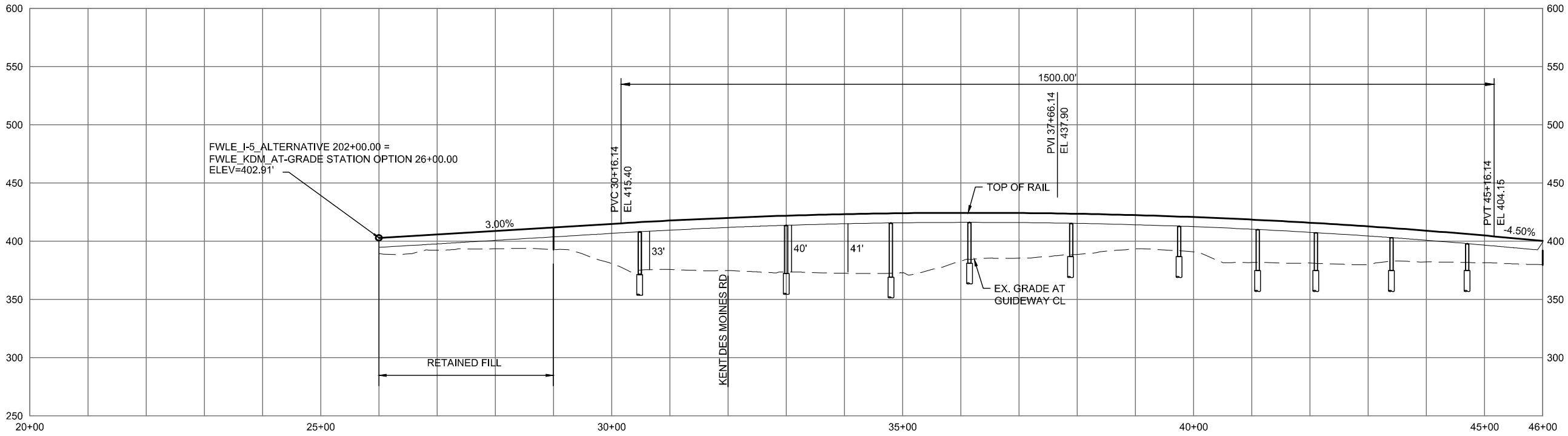
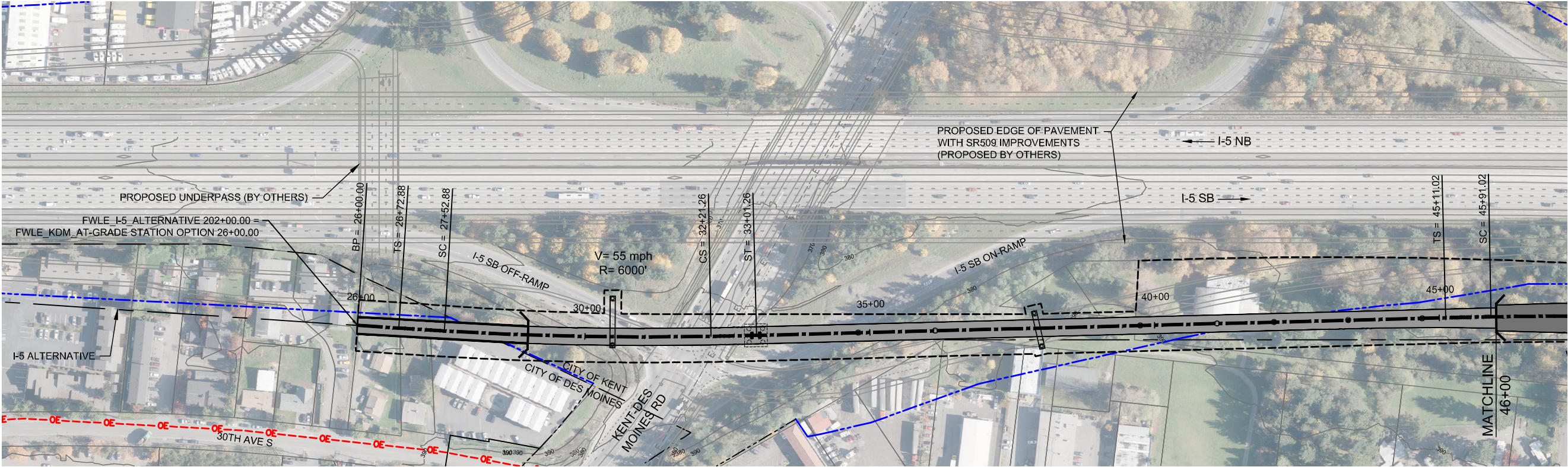
I-5 SHEET LAYOUT MATRIX																	
	1	2	3	4	5	6	7	8	9	10	11	12	13	14	15	16	17
A - I-5 ALTERNATIVE	X	X	X	X	X	X	X	X	X	X	X	X	X	X	X		X
B - KENT/DES MOINES-AT-GRADE STATION OPTION					X	X	X										
C - KENT/DES MOINES SR 99 EAST STATION OPTION				X	X	X											
D - LANDFILL MEDIAN ALIGNMENT OPTION						X	X	X									
E - FEDERAL WAY I-5 STATION OPTION																	X
F - I-5 FEDERAL WAY S 320TH PARK-AND-RIDE STATION OPTION															X	X	



2/25/2015 12:15:16 PM
C:\P\WORKING\SEAD\078401-FA01-GX02.DWG



SOUND TRANSIT FEDERAL WAY LINK EXTENSION



2/25/2015 4:11:38 PM C:\P\WORKING\SEAD\078428 FWLE_I-5_KDM AT GRADE STATION.DWG C:\FOX

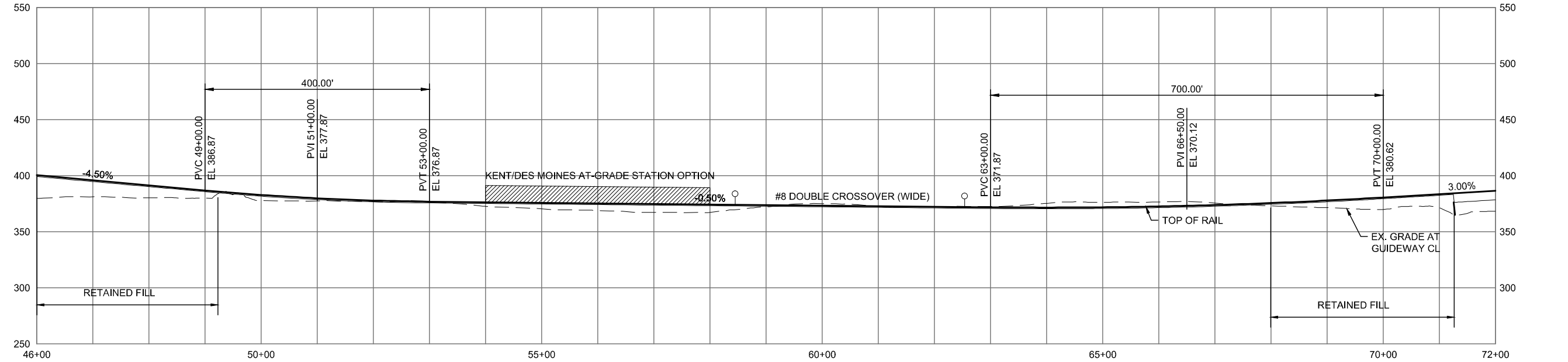
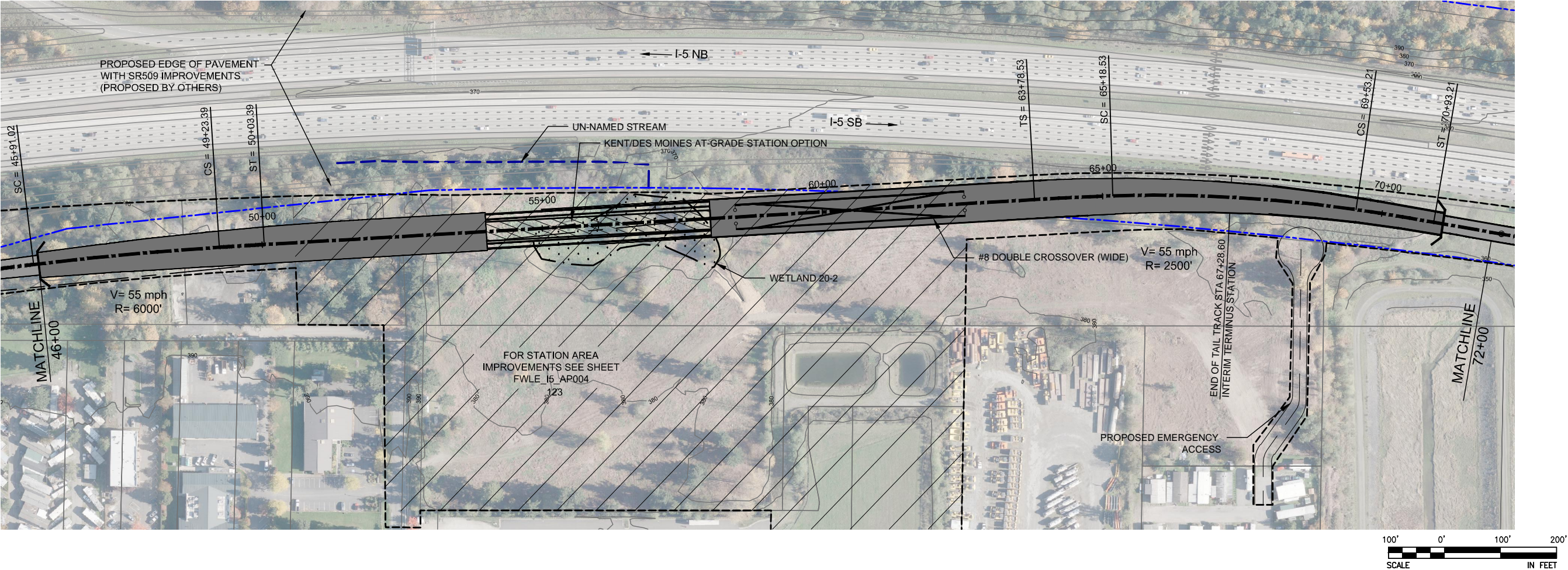


DRAFT EIS - CONCEPTUAL DESIGN
TRACK PLAN AND PROFILE
I-5 KENT/DES MOINES AT-GRADE STATION OPTION
STA 26+00 TO STA 46+00

APRIL 2015

I5-B1-PP05
120

SOUND TRANSIT FEDERAL WAY LINK EXTENSION



2/25/2015 4:11:46 PM C:\PWORKING\SEAD\078428 FWLE 15 KDM AT GRADE STATION.DWG CFOX

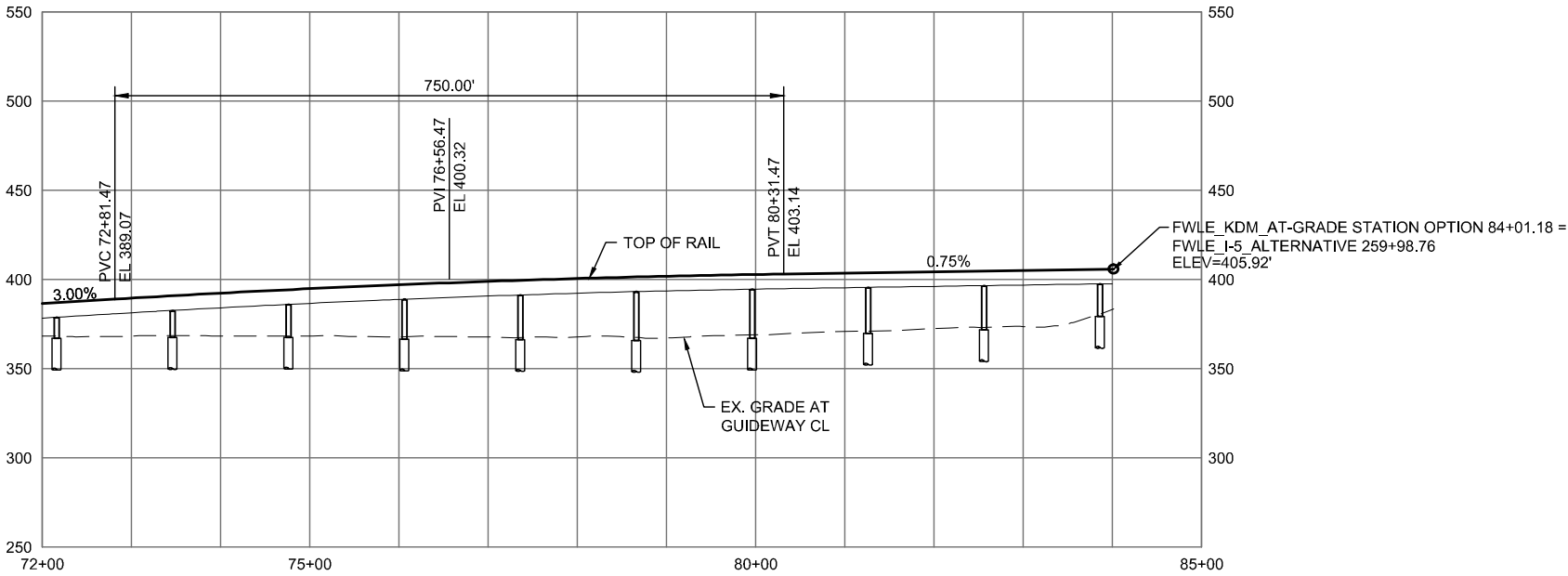
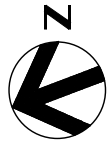
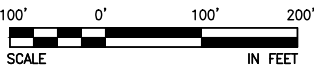
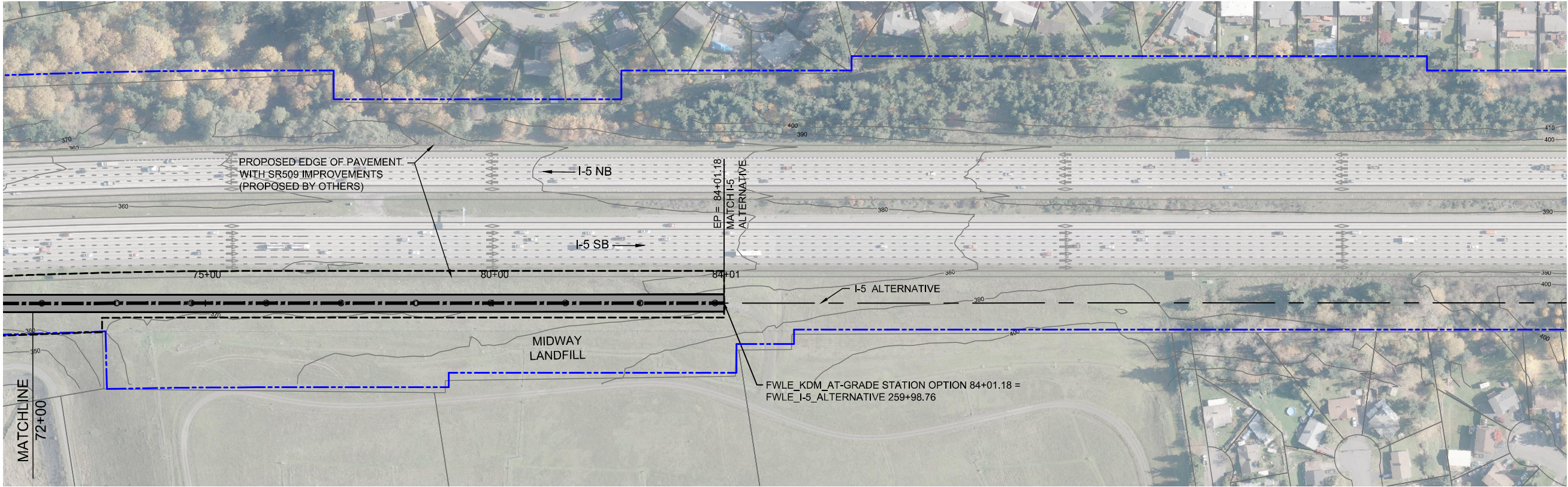


DRAFT EIS - CONCEPTUAL DESIGN
TRACK PLAN AND PROFILE
I-5 KENT/DES MOINES AT-GRADE STATION OPTION
STA 46+00 TO STA 72+00

APRIL 2015

I5-B2-PP06
121

SOUND TRANSIT FEDERAL WAY LINK EXTENSION



2/25/2015 4:11:55 PM C:\P\WORKING\SEAD\078428 FWLE I-5 KDM AT GRADE STATION.DWG CFOX



DRAFT EIS - CONCEPTUAL DESIGN
TRACK PLAN AND PROFILE
I-5 KENT/DES MOINES AT-GRADE STATION OPTION
STA 72+00 TO STA 84+01.18

APRIL 2015

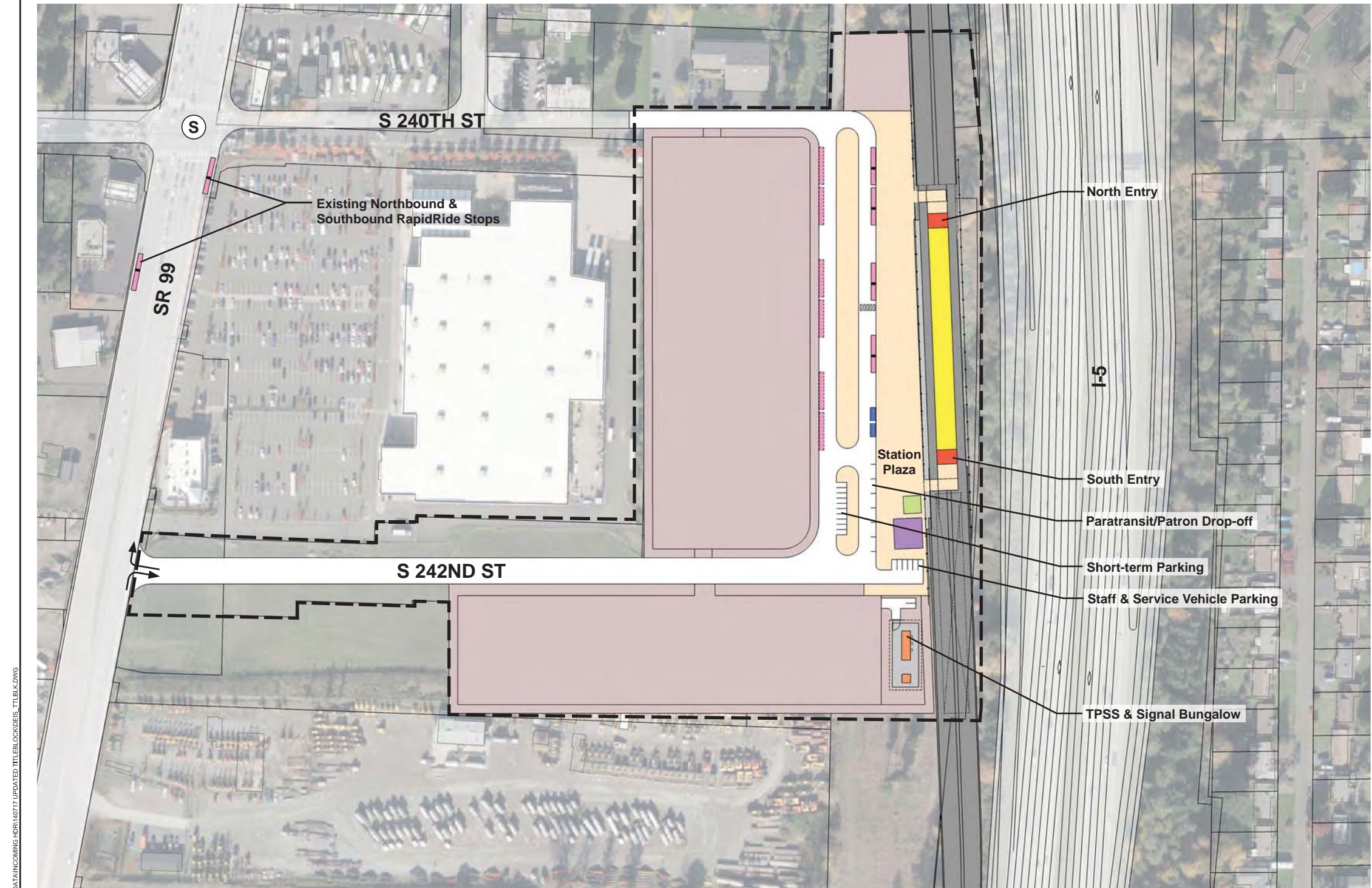
I5-B3-PP07
122

SOUND TRANSIT FEDERAL WAY LINK EXTENSION

ASSUMPTIONS:

Kent/Des Moines At-Grade Station Option	
Alternative(s)	I-5
Boardings	2,000
Boardings (interim terminus)	3,000
Station Configuration	
Terminus / In-Line	Interim Terminus
Station Type	Center Platform - At Grade
Platform Width	34'
Tail track	900'
Crossover	Yes
TPSS	Yes
Program	
KC Metro Ancillary Spaces (SF)	200
ST Ancillary Spaces (SF)	1,800
Total Ancillary Spaces (SF)	2,000
Vertical Circulation	
# of entrances	2
# of escalators	0
# of staircases (patron)	0
# of elevators	0
# of emergency stairs	0
Bus/ Paratransit Facilities	
Bus bays (KCM)	2 bays, one 60' coach each
Bus bays (ST)	1 bay, two 60' coaches
Rapid Ride	On-street at SR 99
Bus layover (KCM)	2 bays, two 60' coaches each
Bus layover (ST)	1 bay, two 60' coaches
Paratransit spaces	1 permanent, 1 interim
Communications Facility	Tier 2
Parking & Amenities	
Bike storage	900 SF
Patron drop-off	6 spaces
Short-term patron parking	7 to 10 spaces
Staff parking	4 spaces
Service/emerg. vehicle park.	2 spaces, separate lot
Signal bungalow / TPSS park.	2 spaces, dedicated
Long-term patron parking	500 spaces (structure)
Temporary patron parking*	500 spaces (surface)
Total proposed patron parking*	1000 Spaces

*Only required for interim terminus condition

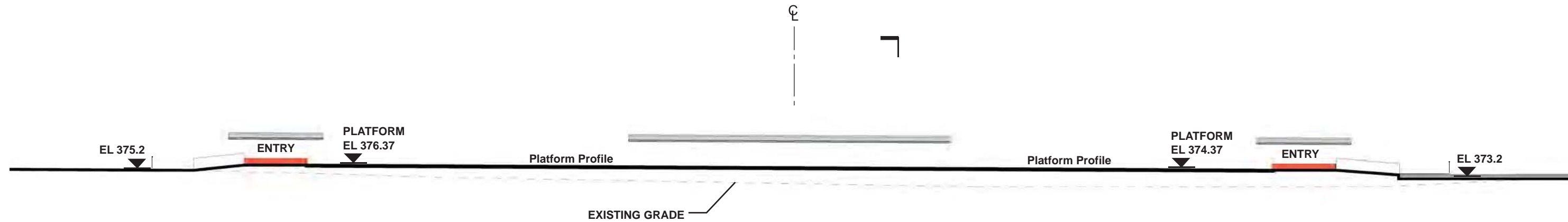


7/17/2014 11:36:52 AM
G:\BWH PROJECTS\67612 FEDERAL WAY TRANSIT EXTENSION\2 CLIENT\2 DATA\INCOMING HDR\40717 UPDATED TITLEBLOCK\DES_TTLB\K.DWG


SOUND TRANSIT FEDERAL WAY LINK EXTENSION

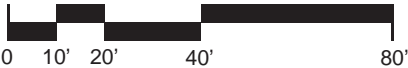


SECTION LOOKING NORTH

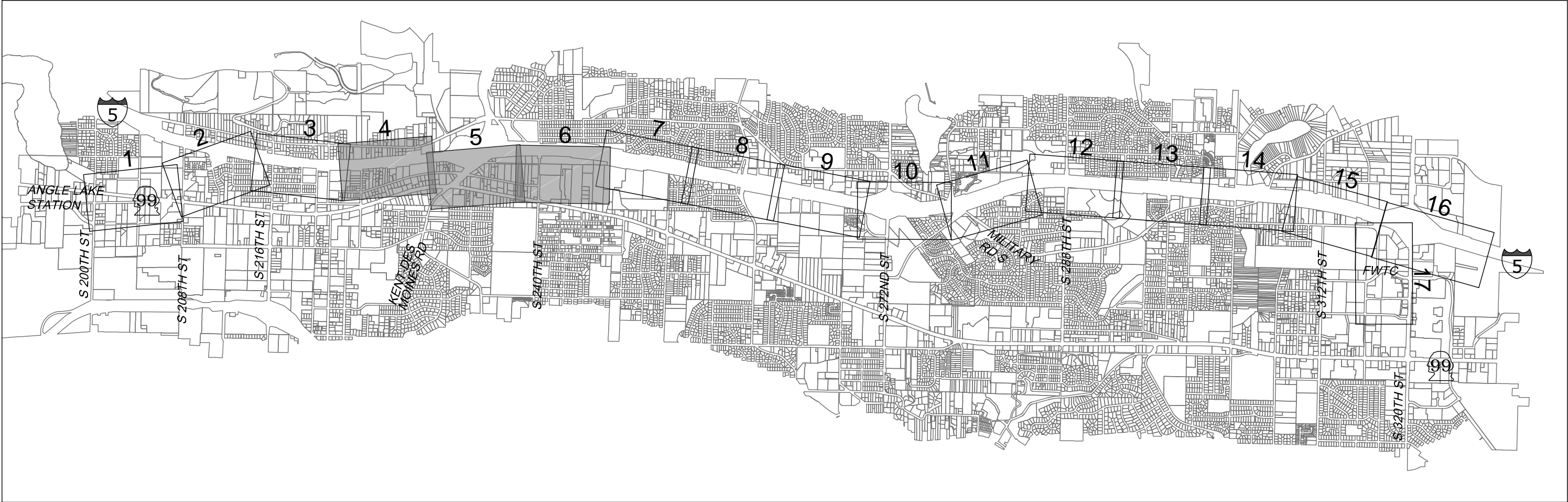


SECTION LOOKING EAST

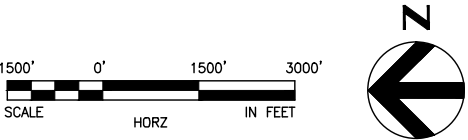
- | | | | |
|---|------------------------|---|--------------------------------|
|  | STATION PLAZA |  | BUS LAYOVER |
|  | VERTICAL CIRCULATION |  | BUS PICK-UP / DROP OFF |
|  | TICKETING / ENTRY HALL |  | PARATRANSIT |
|  | PLATFORM |  | CONSTRUCTION STAGING / PARKING |
|  | ANCILLARY SPACES | | |
|  | TPSS | | |



SOUND TRANSIT FEDERAL WAY LINK EXTENSION



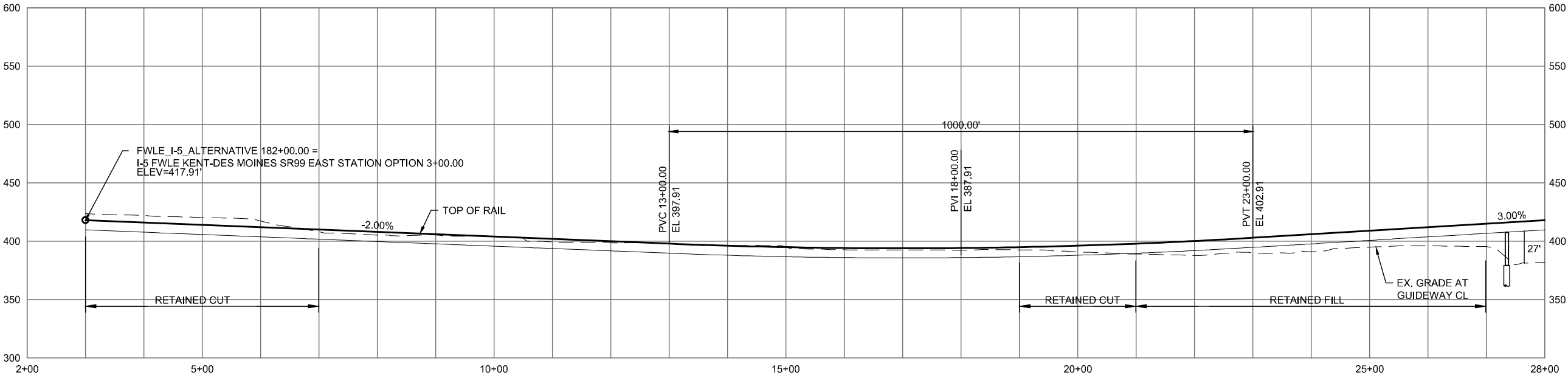
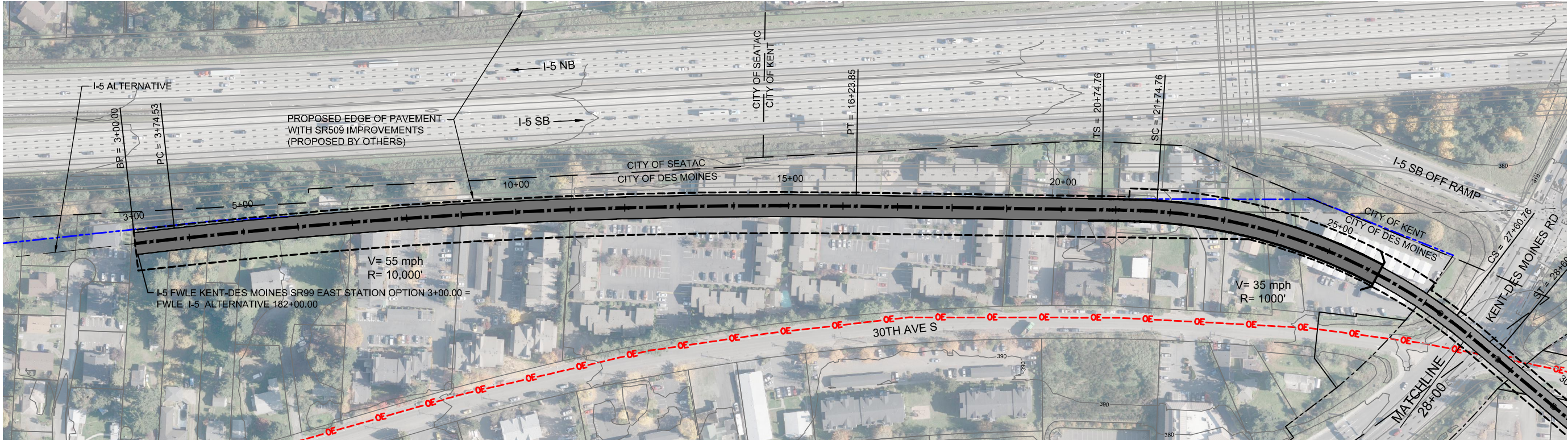
I-5 SHEET LAYOUT MATRIX																	
	1	2	3	4	5	6	7	8	9	10	11	12	13	14	15	16	17
A - I-5 ALTERNATIVE	X	X	X	X	X	X	X	X	X	X	X	X	X	X	X		X
B - KENT/DES MOINES-AT-GRADE STATION OPTION					X	X	X										
C - KENT/DES MOINES SR 99 EAST STATION OPTION				X	X	X											
D - LANDFILL MEDIAN ALIGNMENT OPTION						X	X	X									
E - FEDERAL WAY I-5 STATION OPTION																	X
F - I-5 FEDERAL WAY S 320TH PARK-AND-RIDE STATION OPTION															X	X	



2/25/2015 12:15:18 PM
C:\P\WORKING\SEAD\078401-FA01-GX02.DWG



SOUND TRANSIT FEDERAL WAY LINK EXTENSION



2/27/2015 12:50:14 PM C:\P\WORKING\SEAD\07842C_P\LE I-5_KDM SR99 EAST STATION.DWG C:\OX



DRAFT EIS - CONCEPTUAL DESIGN
TRACK PLAN AND PROFILE
I-5 KENT/DES MOINES SR 99 EAST STATION OPTION
STA 3+00 TO STA 28+00

APRIL 2015

I5-C1-PP04
126

SOUND TRANSIT FEDERAL WAY LINK EXTENSION

