

Federal Way Link Extension

Draft Environmental Impact Statement

CONCEPTUAL DESIGN DRAWINGS

Appendix F



Contents

SR 99 Alternative: pp. 1-25

- S 216th West Station Option: pp. 26-31
- S 216th East Station Option: pp. 32-36
- Kent/Des Moines SR 99 Median Station Option: pp. 37-42
- Kent/Des Moines SR 99 East Station Option: pp. 43-49
- Kent/Des Moines HC Campus Station Option: pp. 50-57
- Kent/Des Moines HC Campus Station Option from S 216th West Station Option: pp. 58-63
- S 260th West Station Option: pp. 64-71
- S 260th East Station Option: pp. 72-78
- S 272nd Redondo Trench Station Option: pp. 79-88
- Federal Way SR 99 Station Option: pp. 89-93

I-5 Alternative: pp. 94-118

- Kent/Des Moines At-Grade Station Option: pp. 119-124
- Kent/Des Moines SR 99 East Station Option: pp. 125-130
- Landfill Median Alignment Option: pp.131-134
- Federal Way I-5 Station Option: pp. 135-138
- Federal Way S 320th Park-and-Ride Station Option: pp. 139-143

SR 99 to I-5 Alternative: pp. 144-151

I-5 to SR 99 Alternative: pp. 152-160

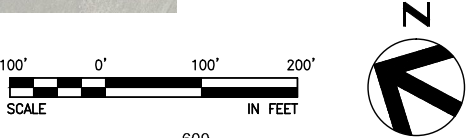
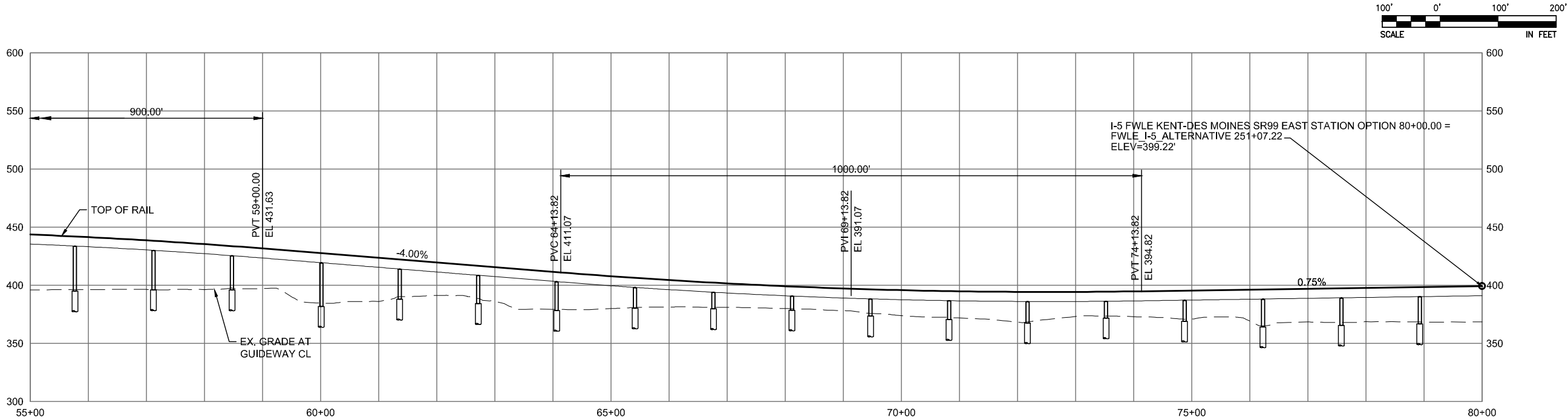
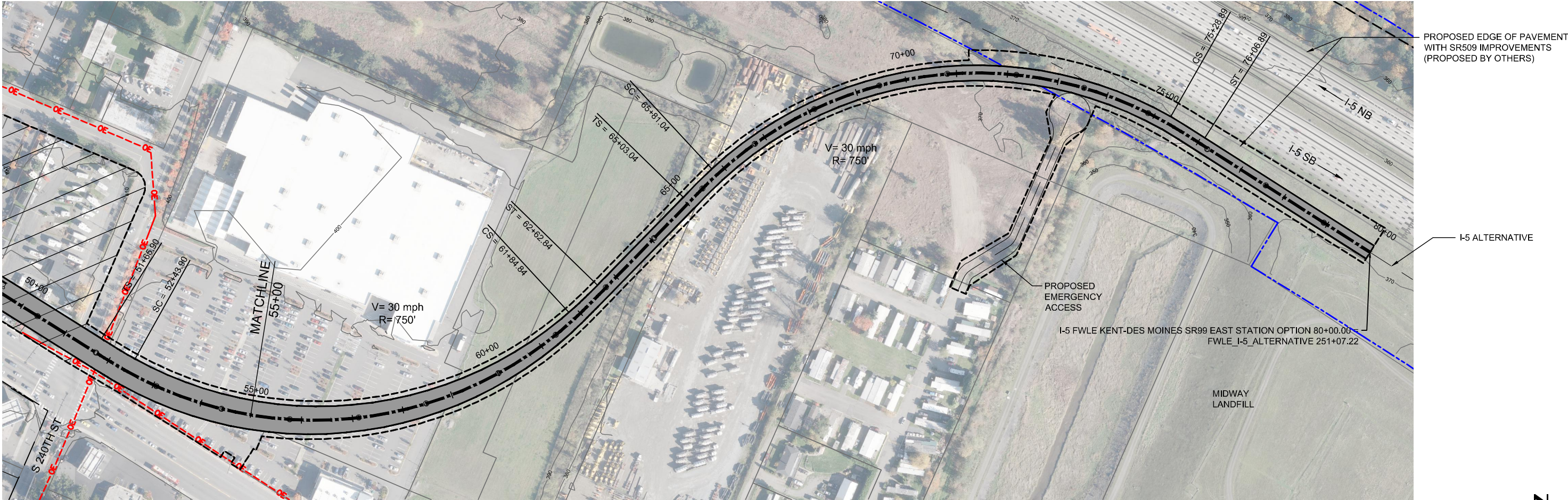
- S 260th West Station Option: pp. 161-163

This page intentionally left blank.

DRAFT EIS - CONCEPTUAL DESIGN I-5 ALTERNATIVE

This page intentionally left blank.

SOUND TRANSIT FEDERAL WAY LINK EXTENSION



2/27/2015 12:50:33 PM
C:\WORKING\SEAD\07842C_PWL\1-5_KDM_SR99_EAST_STATION.DWG



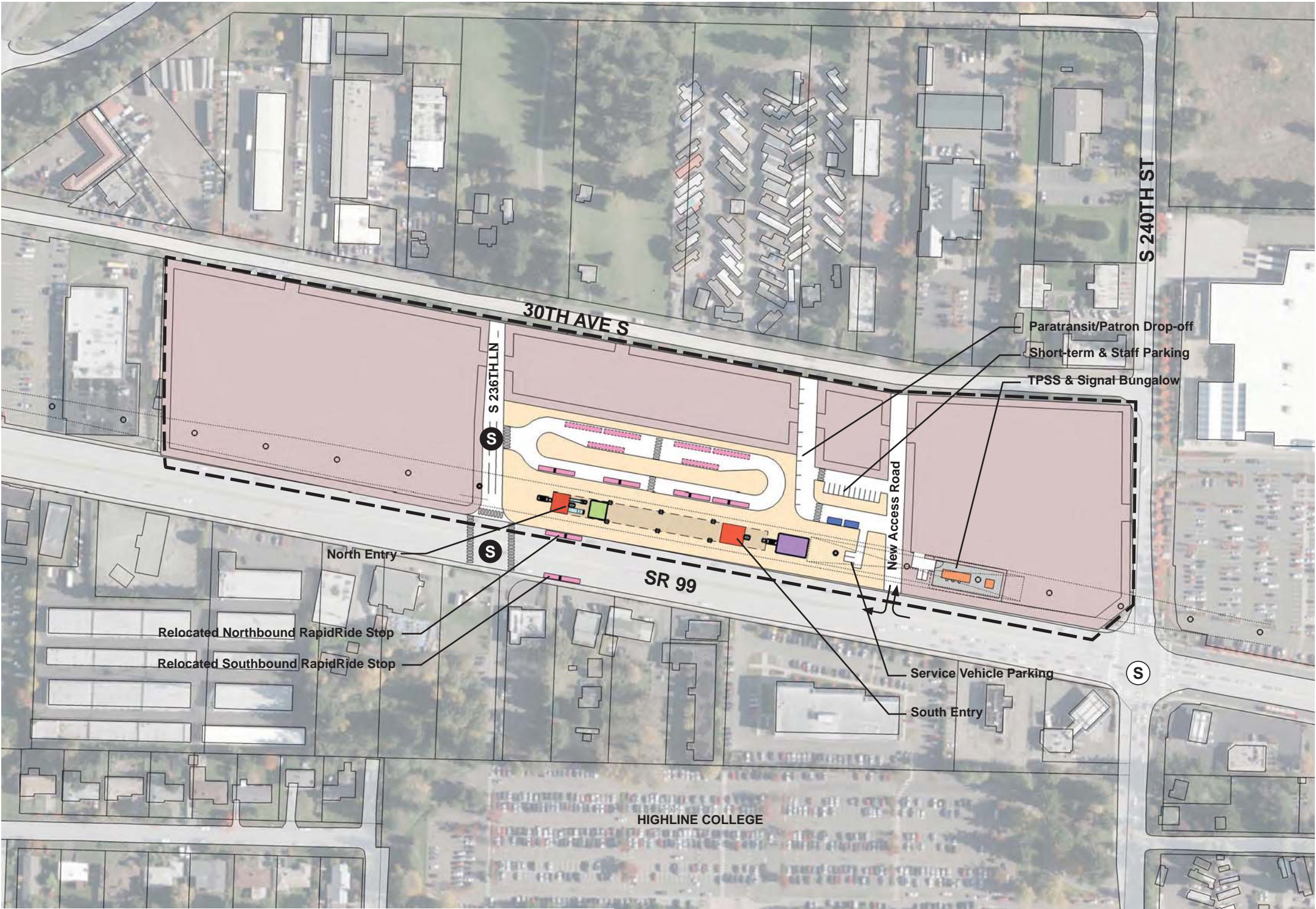
DRAFT EIS - CONCEPTUAL DESIGN
TRACK PLAN AND PROFILE
I-5 KENT/DES MOINES SR 99 EAST STATION OPTION
STA 55+00 TO STA 80+00

APRIL 2015

I5-C3-PP06
128

SOUND TRANSIT FEDERAL WAY LINK EXTENSION

7/17/2014 11:36:52 AM JHAMMERQUIST G:\BWA PROJECTS\67612 FEDERAL WAY TRANSIT EXTENSION\2 CLIENT\2 DATA\INCOMING HDR\40717 UPDATED TITLEBLOCKDES_TTLBKK.DWG



- STATION PLAZA

VERTICAL CIRCULATION

TICKETING / ENTRY HALL

PLATFORM

ANCILLARY SPACES

TPSS
- BUS LAYOVER

BUS PICK-UP / DROP OFF

PARATRANSIT

BICYCLE STORAGE

CONSTRUCTION STAGING / PARKING

- STATION AREA FOOTPRINT

S

SIGNALIZED INTERSECTION (EXISTING)

S

SIGNALIZED INTERSECTION (PROPOSED)

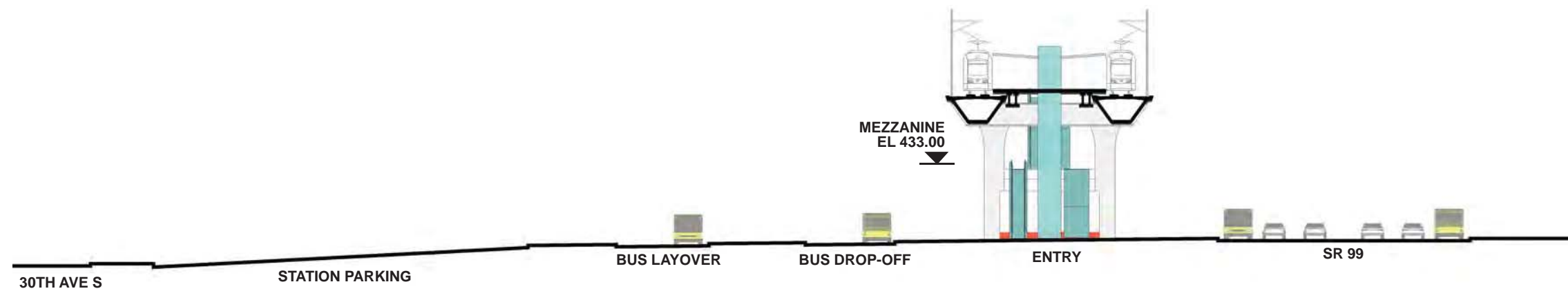
ASSUMPTIONS:

Kent/Des Moines SR 99 East Station Option	
Alternative(s):	SR 99; I-5
Boardings	3,000
Boardings (with 216th Station)	2,500
Boardings (interim terminus)	4,500
Station Configuration	
Terminus / In-Line	Interim Terminus
Station Type	Center Platform - Elevated
Platform Width	34'
Tail track	900'
Crossover	Yes
TPSS	Yes
Program	
KC Metro Ancillary Spaces (SF)	200
ST Ancillary Spaces (SF)	1,800
Total Ancillary Spaces (SF)	2,000
Vertical Circulation	
# of entrances	2
# of escalators	2
# of staircases (patron)	2
# of elevators	2
# of emergency stairs	2
Bus/ Paratransit Facilities	
Bus bays (KCM)	2 bays, one 60' coach each
Bus bays (ST)	1 bay, two 60' coaches
Rapid Ride	On-street at SR 99
Bus layover (KCM)	2 bays, two 60' coaches each
Bus layover (ST)	1 bay, two 60' coaches
Paratransit spaces	1 permanent, 1 interim
Communications Facility	Tier 2
Parking & Amenities	
Bike storage	900 SF
Patron drop-off	6 spaces
Short-term patron parking	7 to 10 spaces
Staff parking	4 spaces
Service/emerg. vehicle park.	2 spaces, separate lot
Signal bungalow / TPSS park.	2 spaces, dedicated
Long-term patron parking	500 spaces (structure)
Temporary patron parking*	500 spaces (surface)
Total proposed patron parking*	1000 spaces

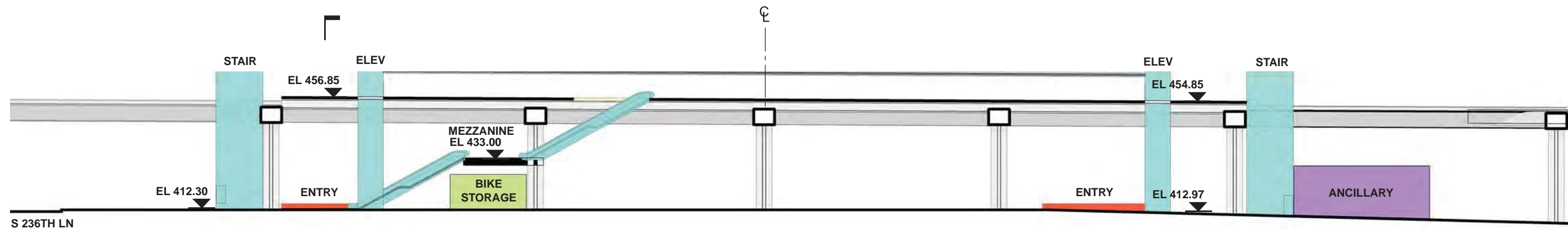
*Only required for interim terminus condition



SOUND TRANSIT FEDERAL WAY LINK EXTENSION

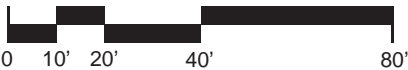


SECTION LOOKING SOUTH



SECTION LOOKING EAST

- | | |
|------------------------|--------------------------------|
| STATION PLAZA | BUS LAYOVER |
| VERTICAL CIRCULATION | BUS PICK-UP / DROP OFF |
| TICKETING / ENTRY HALL | PARATRANSIT |
| PLATFORM | BICYCLE STORAGE |
| ANCILLARY SPACES | CONSTRUCTION STAGING / PARKING |
| TPSS | |



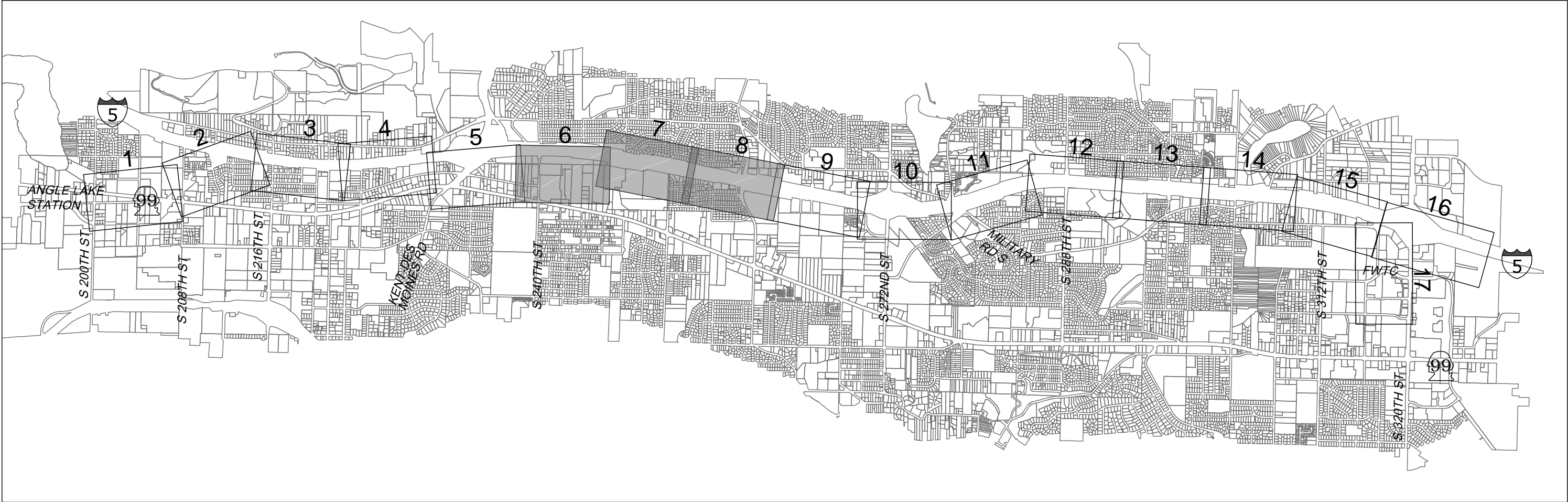
DRAFT EIS - CONCEPTUAL DESIGN
KENT/DES MOINES SR 99 EAST STATION OPTION
SECTIONS

APRIL 2015
FWLE_S99_AX006
130

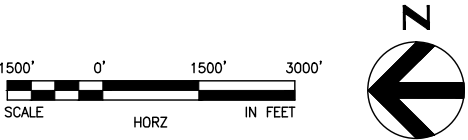
7/17/2014 11:36:52 AM JHAMMERQUIST G:\BIM\PROJECTS\67612\FEDERAL WAY TRANSIT EXTENSION\2 CLIENT\2 DATA\INCOMING HDR\40717 UPDATED TITLEBLOCK\DES_TTLB\K.DWG



SOUND TRANSIT FEDERAL WAY LINK EXTENSION



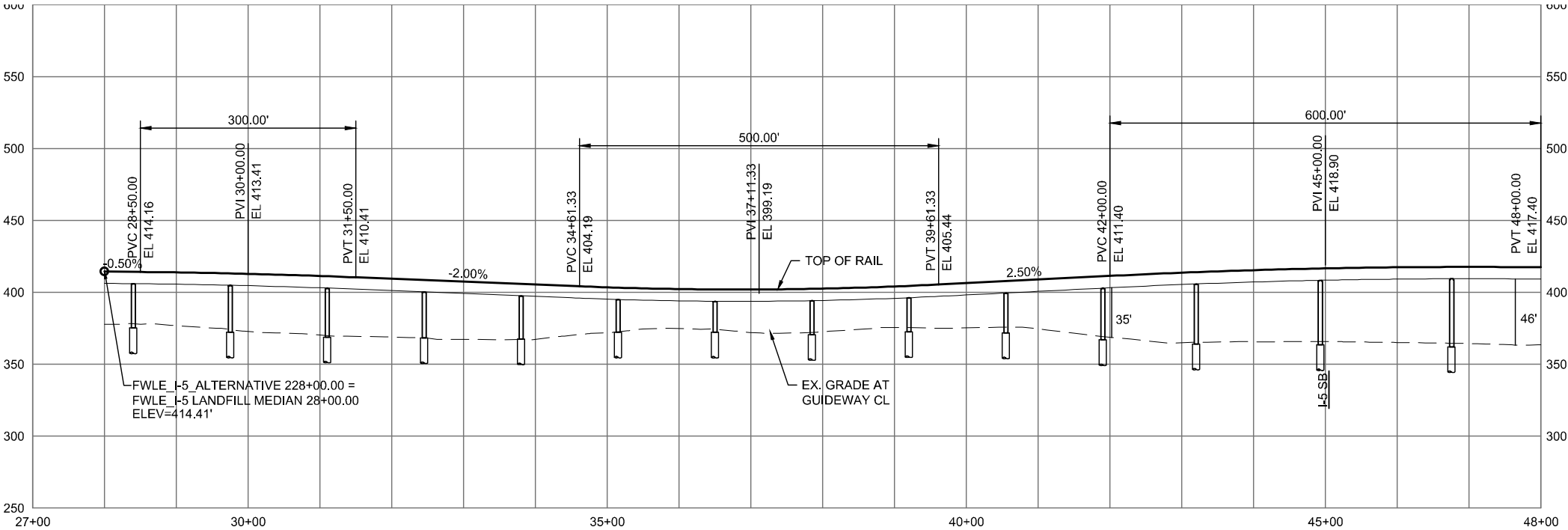
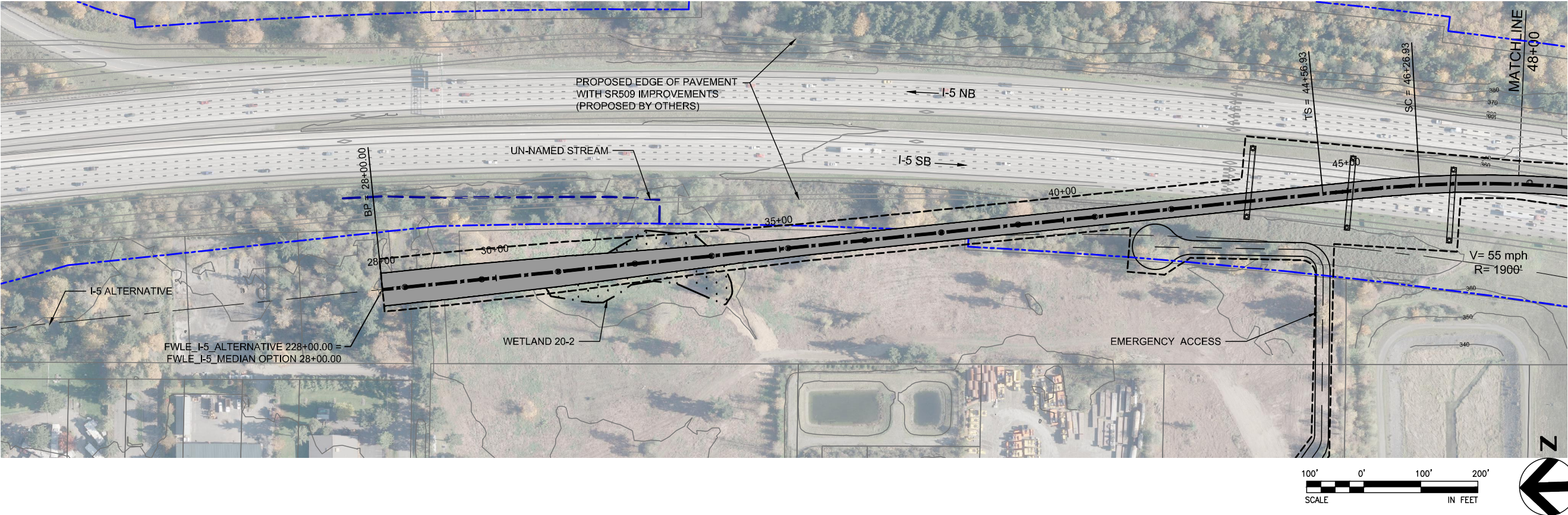
I-5 SHEET LAYOUT MATRIX																	
	1	2	3	4	5	6	7	8	9	10	11	12	13	14	15	16	17
A - I-5 ALTERNATIVE	X	X	X	X	X	X	X	X	X	X	X	X	X	X	X		X
B - KENT/DES MOINES-AT-GRADE STATION OPTION					X	X	X										
C - KENT/DES MOINES SR 99 EAST STATION OPTION				X	X	X											
D - LANDFILL MEDIAN ALIGNMENT OPTION						X	X	X									
E - FEDERAL WAY I-5 STATION OPTION																	X
F - I-5 FEDERAL WAY S 320TH PARK-AND-RIDE STATION OPTION															X	X	



2/25/2015 12:15:20 PM
C:\P\WORKING\SEAD\078401-FA01-GX02.DWG



SOUND TRANSIT FEDERAL WAY LINK EXTENSION



2/25/2015 2:13:32 PM
C:\P\WORKING\SEAD\078420_P\LE_I-5_MEDIAN_ALIGNMENT.DWG

BRHARRIS

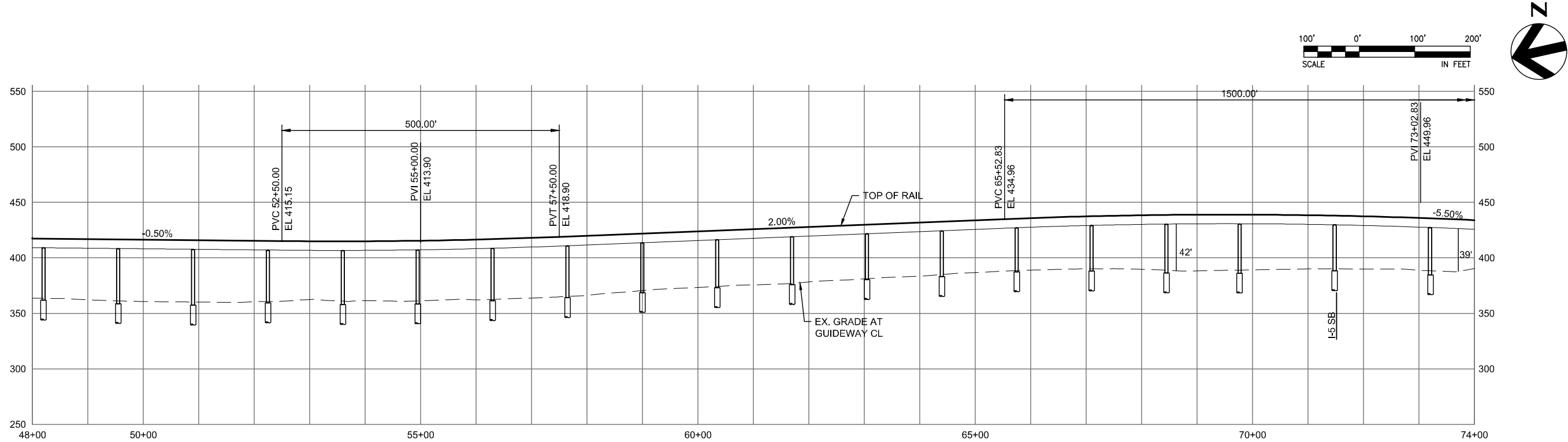
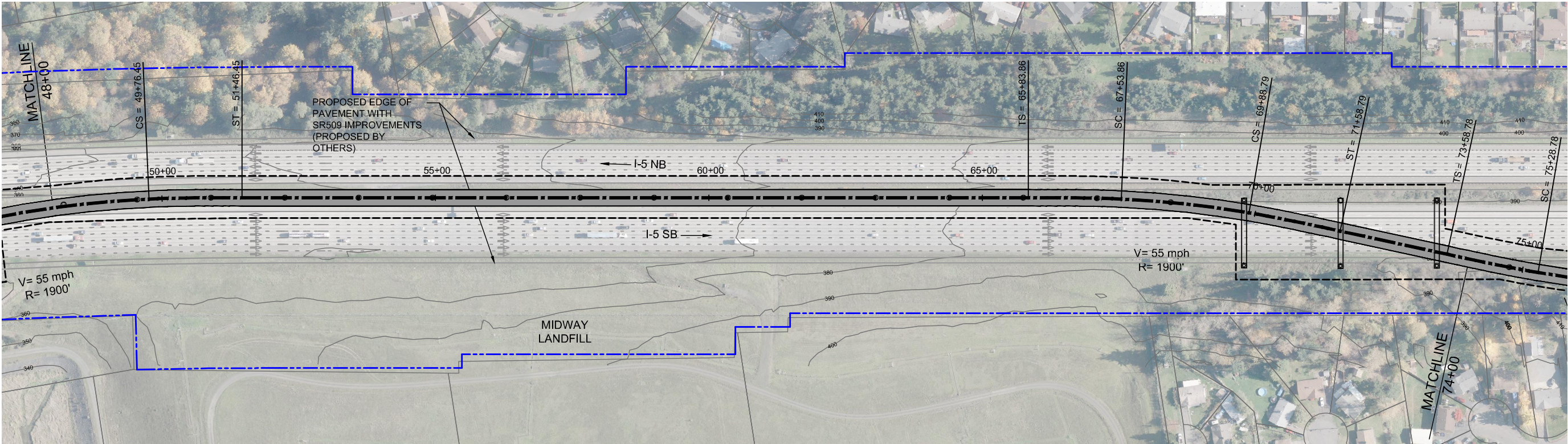


DRAFT EIS - CONCEPTUAL DESIGN
TRACK PLAN AND PROFILE
I-5 LANDFILL MEDIAN ALIGNMENT OPTION
STA 28+00 TO STA 48+00

APRIL 2015

I5-D1-PP06
132

SOUND TRANSIT FEDERAL WAY LINK EXTENSION



2/25/2015 2:13:42 PM
C:\WORKING\SEAD\078420_P\I-5 MEDIUM ALIGNMENT.DWG

BRHARRIS

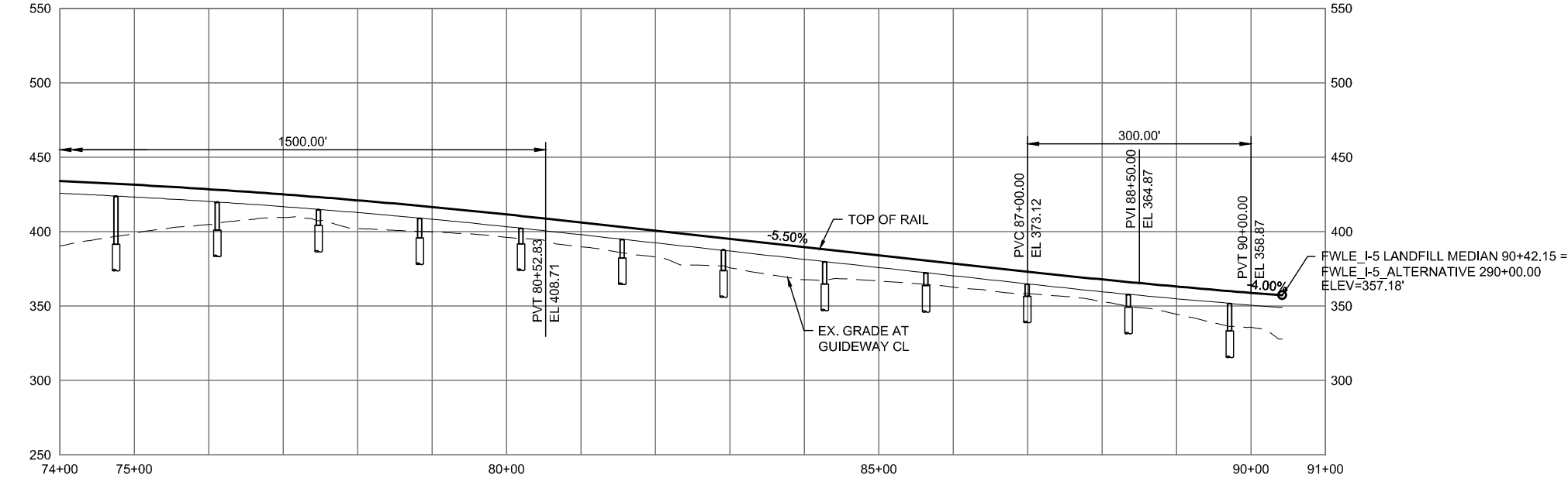
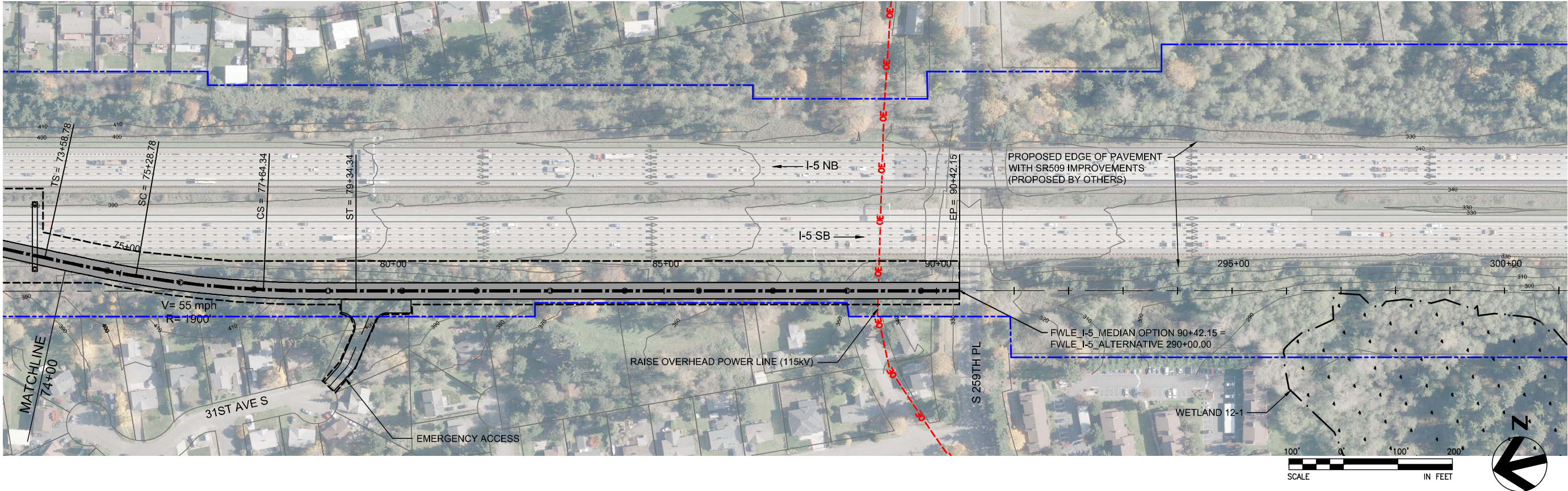


DRAFT EIS - CONCEPTUAL DESIGN
TRACK PLAN AND PROFILE
I-5 LANDFILL MEDIAN ALIGNMENT OPTION
STA 48+00 TO STA 74+00

APRIL 2015

I5-D2-PP07
133

SOUND TRANSIT FEDERAL WAY LINK EXTENSION



2/25/2015 2:13:50 PM
C:\P\WORKING\SEAD\078420 FWLE I-5 MEDIAN ALIGNMENT.DWG

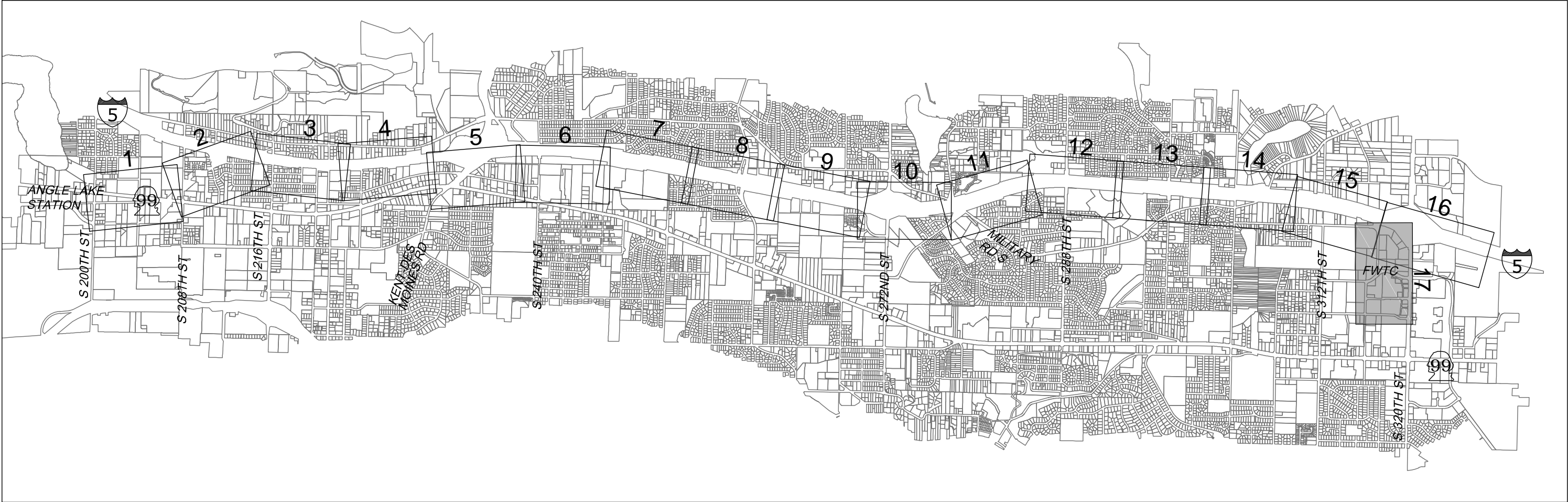


DRAFT EIS - CONCEPTUAL DESIGN
TRACK PLAN AND PROFILE
I-5 LANDFILL MEDIAN ALIGNMENT OPTION
STA 74+00 TO STA 90+42.15

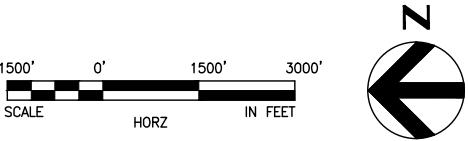
APRIL 2015

I5-D3-PP08
134

SOUND TRANSIT FEDERAL WAY LINK EXTENSION



I-5 SHEET LAYOUT MATRIX																	
	1	2	3	4	5	6	7	8	9	10	11	12	13	14	15	16	17
A - I-5 ALTERNATIVE	X	X	X	X	X	X	X	X	X	X	X	X	X	X	X		X
B - KENT/DES MOINES-AT-GRADE STATION OPTION					X	X	X										
C - KENT/DES MOINES SR 99 EAST STATION OPTION				X	X	X											
D - LANDFILL MEDIAN ALIGNMENT OPTION						X	X	X									
E - FEDERAL WAY I-5 STATION OPTION																	X
F - I-5 FEDERAL WAY S 320TH PARK-AND-RIDE STATION OPTION															X	X	



2/25/2015 12:15:23 PM
C:\P\WORKING\SEAD\078401-LEAD-GX02.DWG

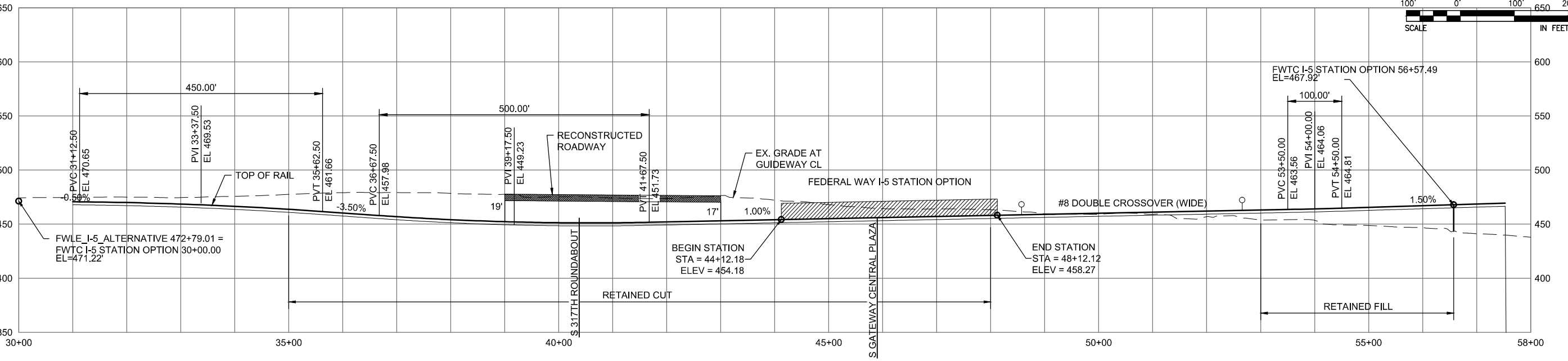
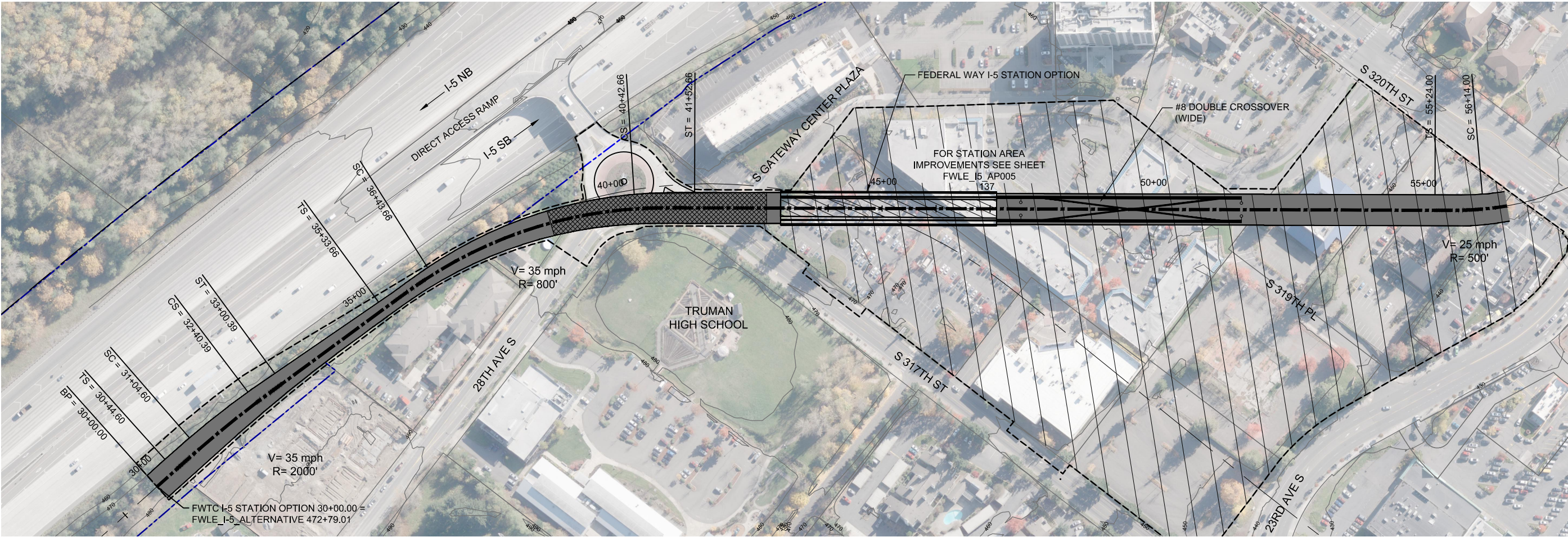


DRAFT EIS - CONCEPTUAL DESIGN
SHEET INDEX KEY MAP
FEDERAL WAY I-5 STATION OPTION

APRIL 2015

I5-E00-GX02
135

SOUND TRANSIT FEDERAL WAY LINK EXTENSION



2/25/2015 2:22:40 PM
C:\WORKING\SEAD\07842\FWLE_I-5_FWTC_I-5_STATION.DWG

BRHARRIS

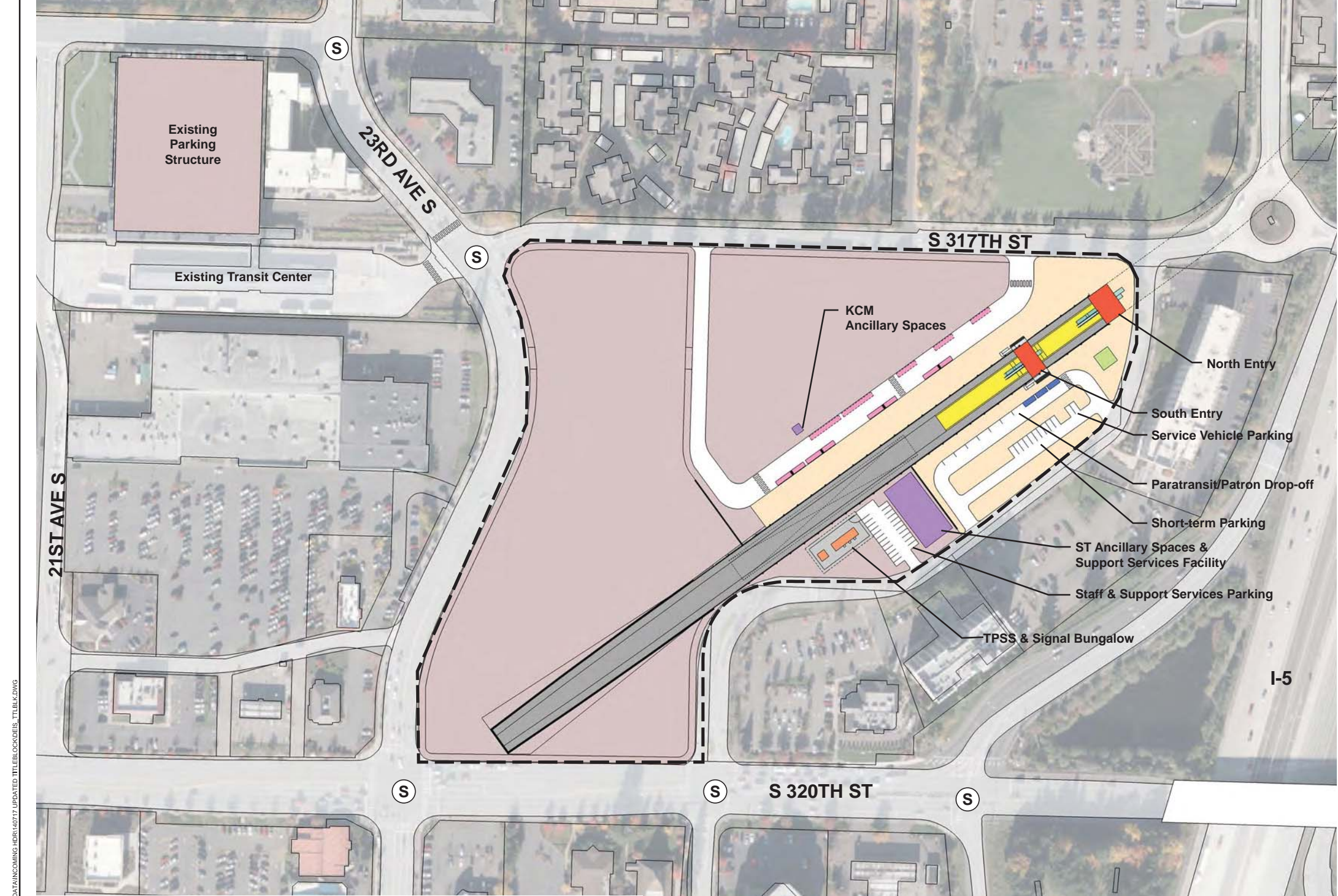


DRAFT EIS - CONCEPTUAL DESIGN
TRACK PLAN & PROFILE AND ROADWAY RECONSTRUCTION
FEDERAL WAY I-5 STATION OPTION
STA 30+00 TO STA 56+57.49

APRIL 2015

I5-E1-PP17
136

SOUND TRANSIT FEDERAL WAY LINK EXTENSION



7/17/2014 11:36:52 AM JHAMMERQUIST G:\BWM\PROJECTS\67612\FEDERAL WAY TRANSIT EXTENSION\2 CLIENT\2 DATA\INCOMING HDR\40717 UPDATED TITLEBLOCK.DWG

- STATION PLAZA

VERTICAL CIRCULATION

TICKETING / ENTRY HALL

PLATFORM

ANCILLARY SPACES

TPSS

BUS LAYOVER

BUS PICK-UP / DROP OFF

PARATRANSIT

BICYCLE STORAGE

CONSTRUCTION STAGING / PARKING

STATION AREA FOOTPRINT

SIGNALIZED INTERSECTION (EXISTING)

SIGNALIZED INTERSECTION (PROPOSED)

ASSUMPTIONS:

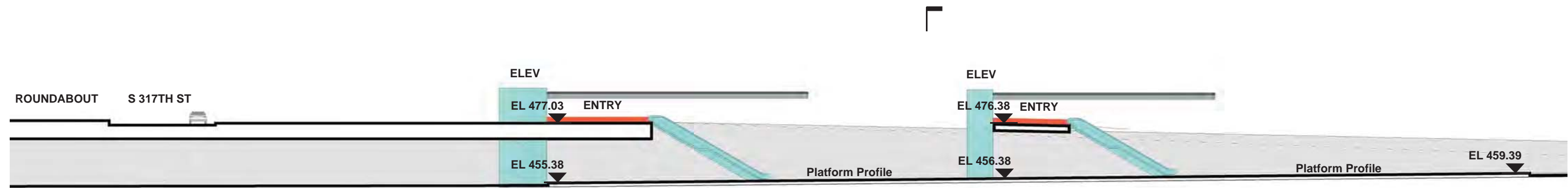
Federal Way I-5 Station Option	
Alternative(s)	I-5; SR 99 to I-5
Boardings	8,500
Station Configuration	
Terminus / In-Line	Terminus
Station Type	Center Platform - Trench
Platform Width	34'
Tail track	900'
Crossover	Yes
TPSS	Yes
Program	
KC Metro Ancillary Spaces (SF)	200
ST Ancillary Spaces (SF)	1,800
Support Services (SF)	5,000
Total Ancillary Spaces (SF)	7,000
Vertical Circulation	
# of entrances	2
# of escalators	2
# of staircases (patron)	2
# of elevators	2
# of emergency stairs	1
Bus/ Paratransit Facilities	
Bus bays (KCM)	2 bays, one 60' coach each
Bus bays (ST)	1 bay, two 60' coaches
Rapid Ride	
Bus layover (KCM)	3 bays, one 40' coach each
Bus layover (ST)	1 bay, two 60' coaches
Paratransit spaces	3 spaces
Communications Facility	Tier 3
Parking & Amenities	
Bike storage	900 SF
Patron drop-off	6 spaces
Short-term patron parking	7 to 10 spaces
Staff parking	4 spaces
Support Services parking	15 spaces
Service/emerg. vehicle park.	2 spaces, separate lot
Signal bungalow / TPSS park.	2 spaces, dedicated
Existing patron parking	1,190 spaces
Additional patron parking	400 spaces
Total proposed patron parking	1590 spaces (structure)



SOUND TRANSIT FEDERAL WAY LINK EXTENSION

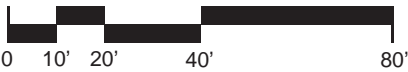


SECTION LOOKING SOUTH



SECTION LOOKING EAST

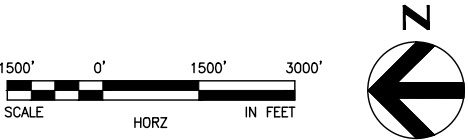
- | | |
|------------------------|--------------------------------|
| STATION PLAZA | BUS LAYOVER |
| VERTICAL CIRCULATION | BUS PICK-UP / DROP OFF |
| TICKETING / ENTRY HALL | PARATRANSIT |
| PLATFORM | BICYCLE STORAGE |
| ANCILLARY SPACES | CONSTRUCTION STAGING / PARKING |
| TPSS | |



SOUND TRANSIT FEDERAL WAY LINK EXTENSION



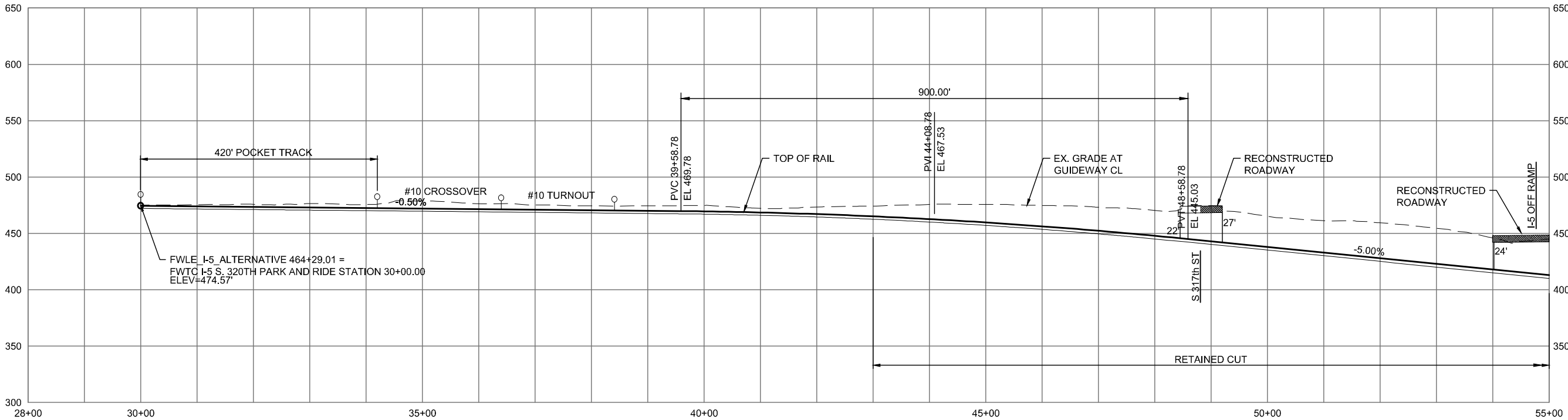
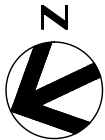
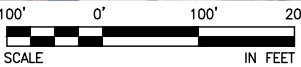
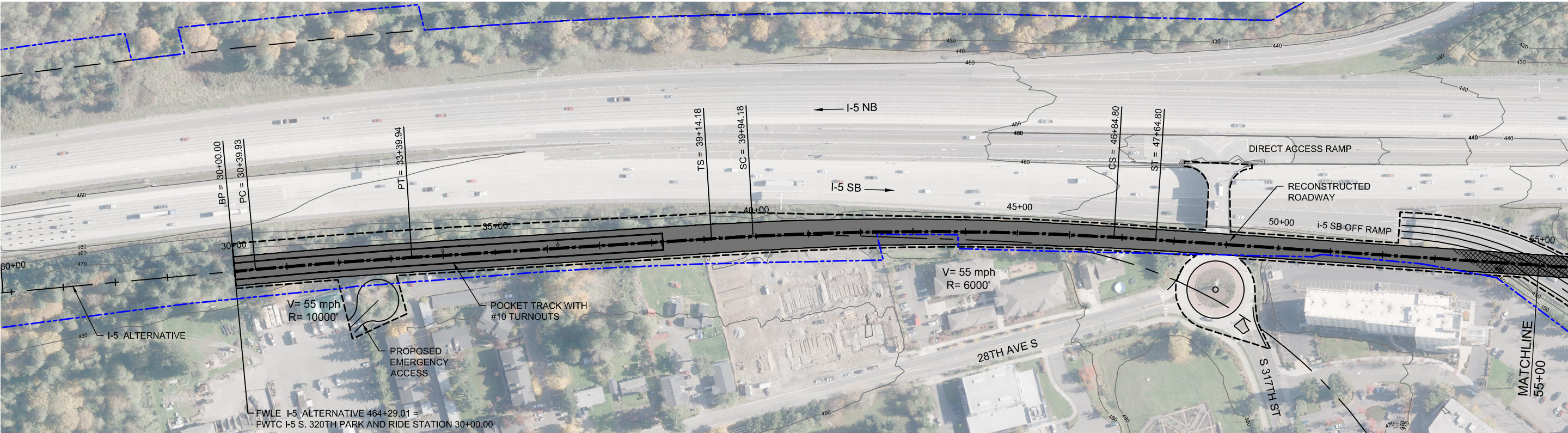
I-5 SHEET LAYOUT MATRIX																	
	1	2	3	4	5	6	7	8	9	10	11	12	13	14	15	16	17
A - I-5 ALTERNATIVE	X	X	X	X	X	X	X	X	X	X	X	X	X	X	X		X
B - KENT/DES MOINES-AT-GRADE STATION OPTION					X	X	X										
C - KENT/DES MOINES SR 99 EAST STATION OPTION				X	X	X											
D - LANDFILL MEDIAN ALIGNMENT OPTION						X	X	X									
E - FEDERAL WAY I-5 STATION OPTION																	X
F - I-5 FEDERAL WAY S 320TH PARK-AND-RIDE STATION OPTION															X	X	



2/25/2015 12:15:25 PM
C:\P\WORKING\SEAD\078401-FA01-GX02.DWG



SOUND TRANSIT FEDERAL WAY LINK EXTENSION



2/25/2015 4:18:18 PM C:\WORKING\SEAD\078426 FWLE I-5 FWTC 320TH PARK AND RIDE STATION.DWG CFOX

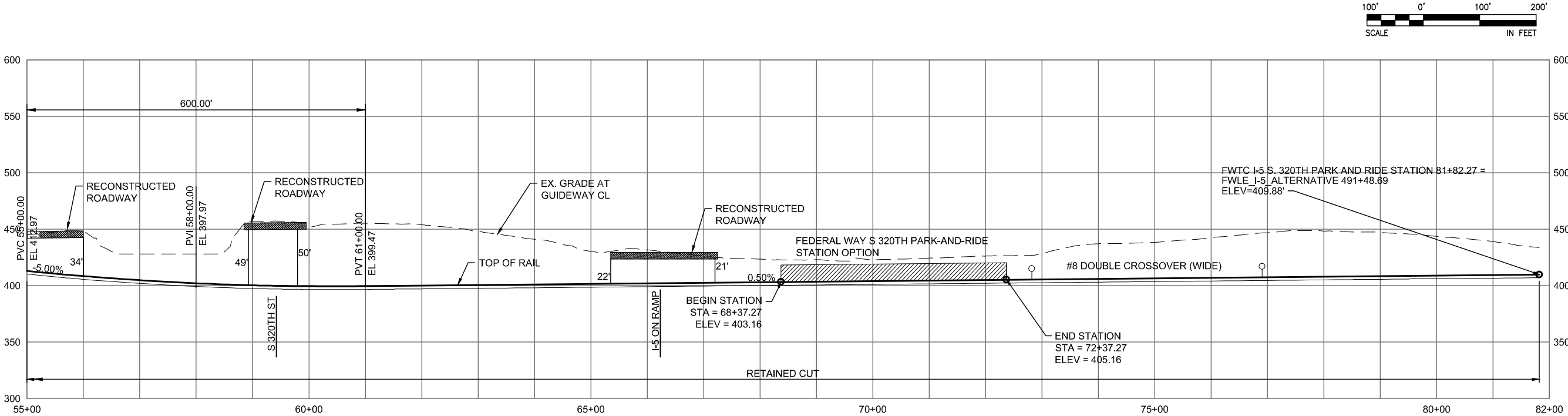
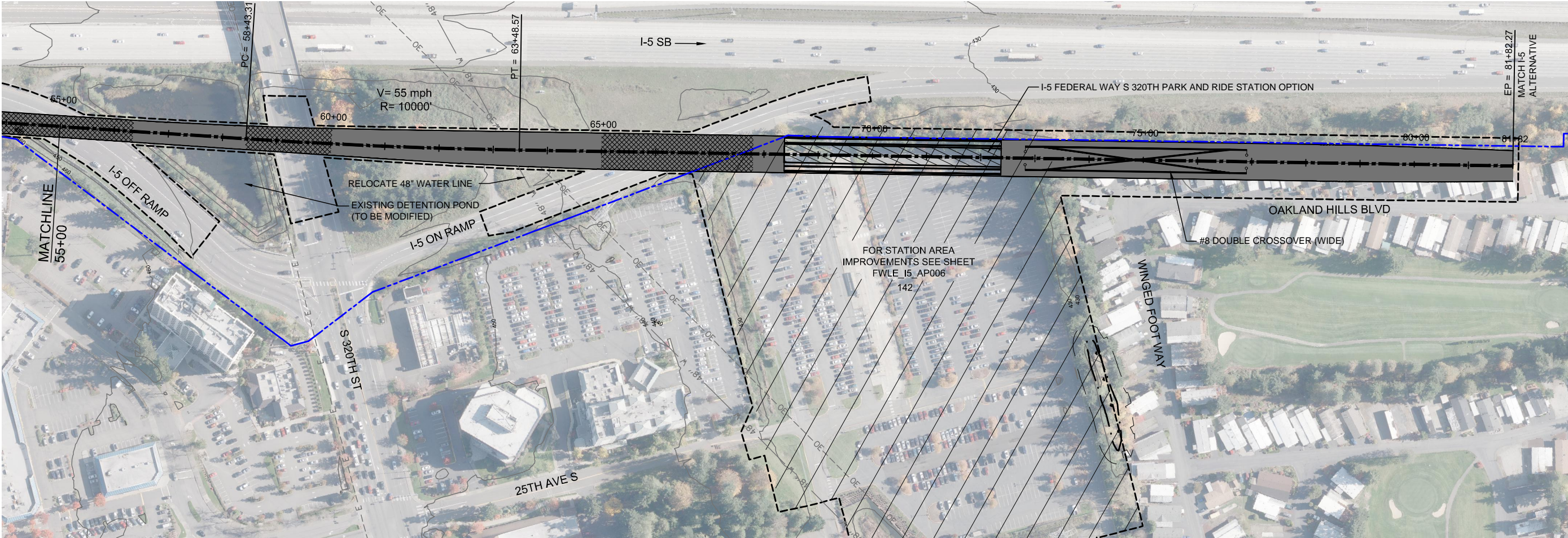


DRAFT EIS - CONCEPTUAL DESIGN
TRACK PLAN AND PROFILE
I-5 FEDERAL WAY S 320TH PARK-AND-RIDE STATION OPTION
STA 30+00 TO STA 55+00

APRIL 2015

I5-F1-PP15
140

SOUND TRANSIT FEDERAL WAY LINK EXTENSION



2/25/2015 4:19:33 PM C:\WORKING\SEAD\078425 FWLE I-5 FWTC 320TH PARK AND RIDE STATION.DWG C:\FOX

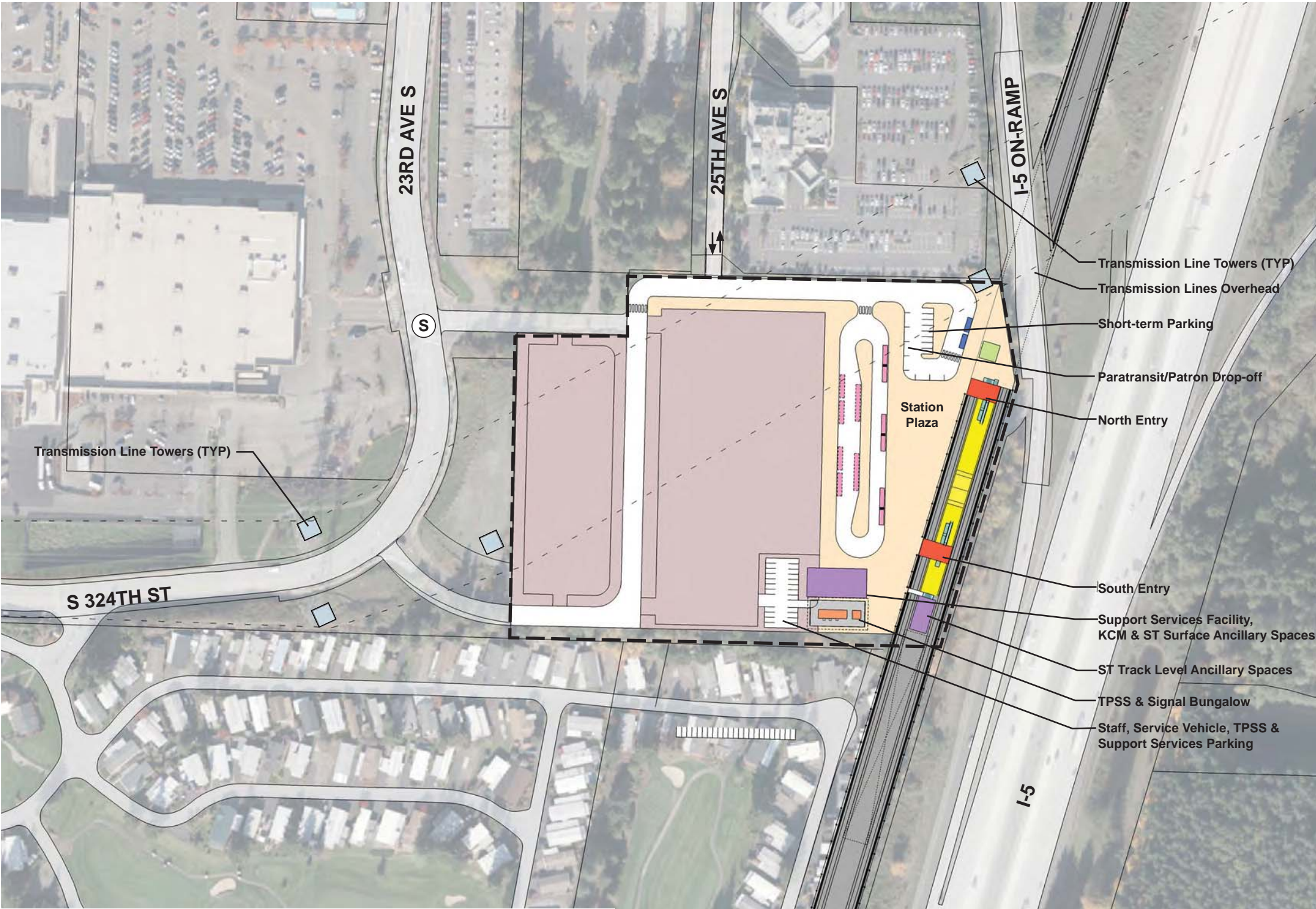


DRAFT EIS - CONCEPTUAL DESIGN
TRACK PLAN AND PROFILE
I-5 FEDERAL WAY S 320TH PARK-AND-RIDE STATION OPTION
STA 55+00 TO STA 81+82.27

APRIL 2015

I5-F2-PP16
141

SOUND TRANSIT FEDERAL WAY LINK EXTENSION



- STATION PLAZA

VERTICAL CIRCULATION

TICKETING / ENTRY HALL

PLATFORM

ANCILLARY SPACES

TPSS
- BUS LAYOVER

BUS PICK-UP / DROP OFF

PARATRANSIT

BICYCLE STORAGE

CONSTRUCTION STAGING / PARKING

- STATION AREA FOOTPRINT
- S

SIGNALIZED INTERSECTION (EXISTING)
- S

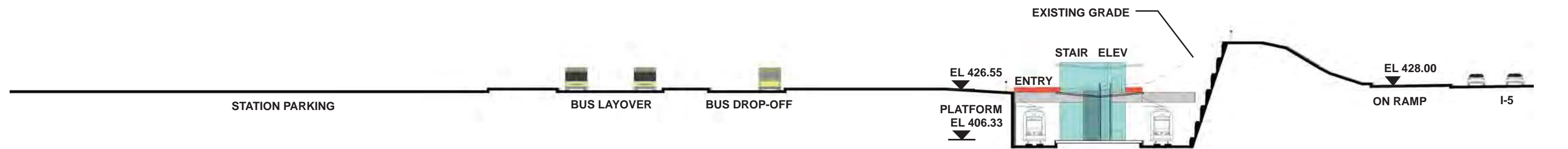
SIGNALIZED INTERSECTION (PROPOSED)

ASSUMPTIONS:

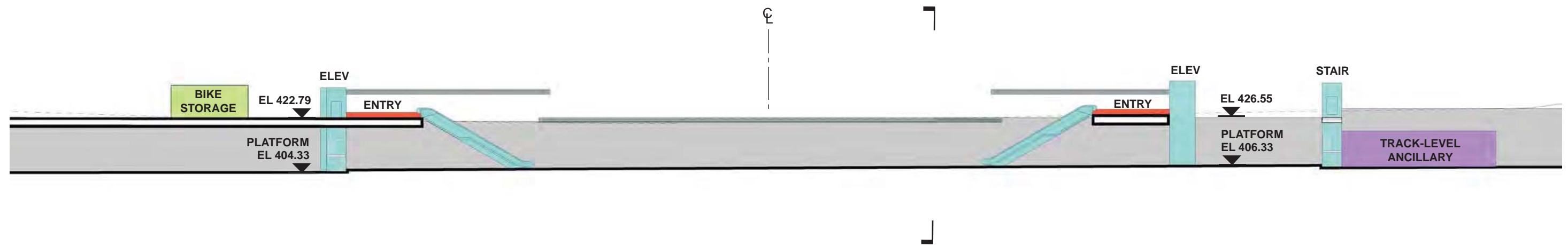
Federal Way S 320th Park-and-Ride Station Option	
Alternative(s):	I-5; SR 99 to I-5
Boardings	9,000
Station Configuration	
Terminus / In-Line	Terminus
Station Type	Center Platform - Trench
Platform Width	34'
Tail track	900'
Crossover	Yes
TPSS	Yes
Program	
KC Metro Ancillary Spaces (SF)	200
ST Ancillary Spaces (SF)	1,800
Support Services (SF)	5,000
Total Ancillary Spaces (SF)	7,000
Vertical Circulation	
# of entrances	2
# of escalators	2
# of staircases (patron)	2
# of elevators	2
# of emergency stairs	2
Bus/ Paratransit Facilities	
Bus bays (KCM)	3 bays, one 60' coach each
Bus bays (ST)	N/A
Rapid Ride	N/A
Bus layover (KCM)	2 bays, one 60' coach each 2 bays, two 40' coaches each
Bus layover (ST)	N/A
Paratransit spaces	2 spaces
Communications Facility	Tier 3
Parking & Amenities	
Bike storage	900 SF
Patron drop-off	6 spaces
Short-term patron parking	7 to 10 spaces
Staff parking	4 spaces
Support Services parking	15 spaces
Service/emerg. vehicle park.	2 spaces, separate lot
Signal bungalow / TPSS park.	2 spaces, dedicated
Existing patron parking	877 spaces
Additional patron parking	400 spaces
Total proposed patron parking	1277 spaces (structure)



SOUND TRANSIT FEDERAL WAY LINK EXTENSION

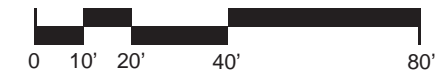


SECTION LOOKING NORTH



SECTION LOOKING EAST

- | | |
|------------------------|--------------------------------|
| STATION PLAZA | BUS LAYOVER |
| VERTICAL CIRCULATION | BUS PICK-UP / DROP OFF |
| TICKETING / ENTRY HALL | PARATRANSIT |
| PLATFORM | BICYCLE STORAGE |
| ANCILLARY SPACES | CONSTRUCTION STAGING / PARKING |
| TPSS | |



DRAFT EIS - CONCEPTUAL DESIGN
FEDERAL WAY S 320TH PARK-AND-RIDE STATION OPTION
SECTIONS

APRIL 2015
FWLE_I-5_AX006
143

7/17/2014 11:26:52 AM JHAMMERQJST G:\BWH PROJECTS\67612 FEDERAL WAY TRANSIT EXTENSION\2 CLIENT\2 DATA\INCOMING HDR\40717 UPDATED TITLEBLOCK\DES_TTLB\K.DWG

