

Federal Way Link Extension

Draft Environmental Impact Statement

CONCEPTUAL DESIGN DRAWINGS

Appendix F



Contents

SR 99 Alternative: pp. 1-25

- S 216th West Station Option: pp. 26-31
- S 216th East Station Option: pp. 32-36
- Kent/Des Moines SR 99 Median Station Option: pp. 37-42
- Kent/Des Moines SR 99 East Station Option: pp. 43-49
- Kent/Des Moines HC Campus Station Option: pp. 50-57
- Kent/Des Moines HC Campus Station Option from S 216th West Station Option: pp. 58-63
- S 260th West Station Option: pp. 64-71
- S 260th East Station Option: pp. 72-78
- S 272nd Redondo Trench Station Option: pp. 79-88
- Federal Way SR 99 Station Option: pp. 89-93

I-5 Alternative: pp. 94-118

- Kent/Des Moines At-Grade Station Option: pp. 119-124
- Kent/Des Moines SR 99 East Station Option: pp. 125-130
- Landfill Median Alignment Option: pp.131-134
- Federal Way I-5 Station Option: pp. 135-138
- Federal Way S 320th Park-and-Ride Station Option: pp. 139-143

SR 99 to I-5 Alternative: pp. 144-151

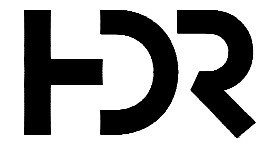
I-5 to SR 99 Alternative: pp. 152-160

- S 260th West Station Option: pp. 161-163

This page intentionally left blank.

DRAFT EIS - CONCEPTUAL DESIGN SR 99 ALTERNATIVE

This page intentionally left blank.



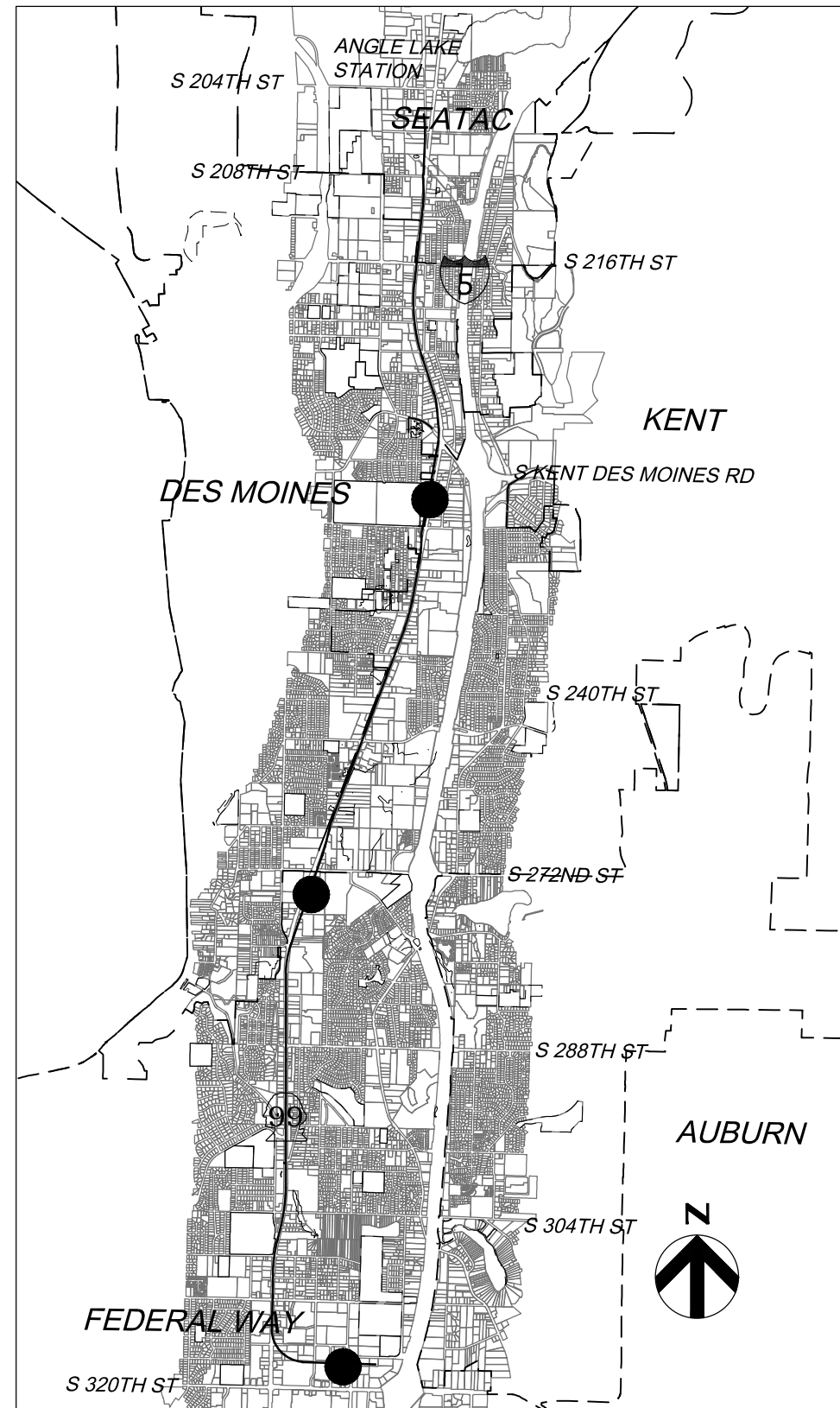
SOUND TRANSIT FEDERAL WAY LINK EXTENSION

DRAFT EIS CONCEPTUAL DESIGN SR 99 ALTERNATIVE

APRIL 2015

SHEET KEY

SR 99 ALTERNATIVE
S 216TH WEST STATION OPTION (POTENTIAL ADDITIONAL STATION)
S 216TH EAST STATION OPTION (POTENTIAL ADDITIONAL STATION)
KENT/DES MOINES HC CAMPUS STATION OPTION
KDM HC CAMPUS STATION OPTION FROM S 216TH WEST STATION OPTION
KENT/DES MOINES SR 99 EAST STATION OPTION
KENT/DES MOINES SR 99 MEDIAN STATION OPTION
S 260TH WEST STATION OPTION (POTENTIAL ADDITIONAL STATION)
S 260TH EAST STATION OPTION (POTENTIAL ADDITIONAL STATION)
S 272ND REDONDO TRENCH STATION OPTION
FEDERAL WAY SR 99 STATION OPTION



PROJECT LOCATION MAP

SOUND TRANSIT FEDERAL WAY LINK EXTENSION

| Sheet No. | Drawing No. | Sheet Title |
|--|-----------------|---|
| SR 99 ALTERNATIVE | | |
| 1 | SR99-A00-GX00 | COVER SHEET |
| 2 | SR99-A00-GX01 | SHEET INDEX |
| 3 | SR99-A00-GX02 | SHEET INDEX KEYMAP |
| 4 | SR99-A1-PP01 | TRACK PLAN AND PROFILE STA 7+25 TO STA 30+00 |
| 5 | SR99-A2-PP02 | TRACK PLAN AND PROFILE STA 30+00 TO STA 56+00 |
| 6 | SR99-A3-PP03 | TRACK PLAN AND PROFILE STA 56+00 TO STA 82+00 |
| 7 | SR99-A4-PP04 | TRACK PLAN AND PROFILE STA 82+00 TO STA 108+00 |
| 8 | SR99-A5-PP05 | TRACK PLAN AND PROFILE STA 108+00 TO STA 134+00 |
| 9 | SR99-A6-PP06 | TRACK PLAN AND PROFILE STA 134+00 TO STA 160+00 |
| 10 | SR99-A7-PP07 | TRACK PLAN AND PROFILE STA 160+00 TO STA 186+00 |
| 11 | SR99-A8-PP08 | TRACK PLAN AND PROFILE STA 186+00 TO STA 212+00 |
| 12 | SR99-A9-PP09 | TRACK PLAN AND PROFILE STA 212+00 TO STA 238+00 |
| 13 | SR99-A10-PP10 | TRACK PLAN AND PROFILE STA 238+00 TO STA 264+00 |
| 14 | SR99-A11-PP11 | TRACK PLAN AND PROFILE STA 264+00 TO STA 290+00 |
| 15 | SR99-A12-PP12 | TRACK PLAN AND PROFILE STA 290+00 TO STA 316+00 |
| 16 | SR99-A13-PP13 | TRACK PLAN AND PROFILE STA 316+00 TO STA 342+00 |
| 17 | SR99-A14-PP14 | TRACK PLAN AND PROFILE STA 342+00 TO STA 368+00 |
| 18 | SR99-A15-PP15 | TRACK PLAN AND PROFILE STA 368+00 TO STA 394+00 |
| 19 | SR99-A16-PP16 | TRACK PLAN AND PROFILE STA 394+00 TO STA 419+15.90 |
| 20 | FWLE_SR99_AP009 | KENT DES MOINES SR99 WEST STATION - SITE PLAN |
| 21 | FWLE_SR99_AX009 | KENT DES MOINES SR99 WEST STATION - SECTIONS |
| 22 | FWLE_SR99_AP007 | S 272ND REDONDO STATION - SITE PLAN |
| 23 | FWLE_SR99_AX007 | S 272ND REDONDO STATION - SECTIONS |
| 24 | FWLE_SR99_AP003 | FEDERAL WAY TRANSIT CENTER STATION - SITE PLAN |
| 25 | FWLE_SR99_AX003 | FEDERAL WAY TRANSIT CENTER STATION - SECTIONS |
| | | |
| S 216TH WEST STATION OPTION (POTENTIAL ADDITIONAL STATION) | | |
| 26 | SR99-B00-GX02 | SHEET INDEX KEYMAP |
| 27 | SR99-B1-PP01 | TRACK PLAN AND PROFILE STA 15+00 TO STA 30+00 |
| 28 | SR99-B2-PP02 | TRACK PLAN AND PROFILE STA 30+00 TO STA 56+00 |
| 29 | SR99-B3-PP03 | TRACK PLAN AND PROFILE STA 56+00 TO STA 82+36.28 |
| 30 | FWLE_SR99_AP010 | S 216TH WEST STATION OPTION - SITE PLAN |
| 31 | FWLE_SR99_AX010 | S 216TH WEST STATION OPTION - SECTIONS |
| | | |
| S 216TH EAST STATION OPTION (POTENTIAL ADDITIONAL STATION) | | |
| 32 | SR99-C00-GX02 | SHEET INDEX KEYMAP |
| 33 | SR99-C1-PP02 | TRACK PLAN AND PROFILE STA 20+00 TO STA 34+00 |
| 34 | SR99-C2-PP03 | TRACK PLAN AND PROFILE STA 34+00 TO STA 59+91.74 |
| 35 | FWLE_SR99_AP011 | S 216TH EAST STATION OPTION - SITE PLAN |
| 36 | FWLE_SR99_AX011 | S 216TH EAST STATION OPTION - SECTIONS |
| | | |
| KENT/DES MOINES SR 99 MEDIAN STATION OPTION | | |
| 37 | SR99-D00-GX02 | SHEET INDEX KEYMAP |
| 38 | SR99-D1-PP04 | TRACK PLAN AND PROFILE STA 10+00 TO STA 26+00 |
| 39 | SR99-D2-PP05 | TRACK PLAN AND PROFILE STA 26+00 TO STA 52+00 |
| 40 | SR99-D3-PP06 | TRACK PLAN AND PROFILE STA 52+00 TO STA 63+99.96 |
| 41 | FWLE_S99_AP005 | KENT/DES MOINES SR 99 MEDIAN STATION OPTION - SITE PLAN |
| 42 | FWLE_S99_AX005 | KENT/DES MOINES SR 99 MEDIAN STATION OPTION - SECTIONS |
| | | |
| KENT/DES MOINES SR99 EAST STATION OPTION | | |
| 43 | SR99-E00-GX01 | SHEET INDEX KEYMAP |
| 44 | SR99-E01-PP04 | TRACK PLAN AND PROFILE STA 17+45.77 TO STA 41+00 |
| 45 | SR99-E02-PP05 | TRACK PLAN AND PROFILE STA 41+00 TO STA 67+00 |
| 46 | SR99-E03-PP06 | TRACK PLAN AND PROFILE STA 67+00 TO STA 93+00 |
| 47 | SR99-E04-PP07 | TRACK PLAN AND PROFILE STA 93+00 TO STA 107+68.31 |
| 48 | FWLE_SR99_AP006 | KENT/DES MOINES SR 99 EAST STATION OPTION - SITE PLAN |
| 49 | FWLE_SR99_AX006 | KENT/DES MOINES SR 99 EAST STATION OPTION - SECTIONS |
| | | |

| | | |
|--|----------------|--|
| KENT/DES MOINES HC CAMPUS STATION OPTION | | |
| 50 | SR99-F00-GX02 | SHEET INDEX KEYMAP |
| 51 | SR99-F1-PP03 | TRACK PLAN AND PROFILE STA 20+00 TO STA 45+00 |
| 52 | SR99-F2-PP04 | TRACK PLAN AND PROFILE STA 45+00 TO STA 71+00 |
| 53 | SR99-F3-PP05 | TRACK PLAN AND PROFILE STA 71+00 TO STA 97+00 |
| 54 | SR99-F4-PP06 | TRACK PLAN AND PROFILE STA 97+00 TO STA 122+00 |
| 55 | SR99-F5-PP07 | TRACK PLAN AND PROFILE STA 122+00 TO STA 134+88.36 |
| 56 | FWLE_S99_AP004 | KENT/DES MOINES HC CAMPUS STATION OPTION - SITE PLAN |
| 57 | FWLE_S99_AX004 | KENT/DES MOINES HC CAMPUS STATION OPTION - SECTIONS |
| | | |
| KENT/DES MOINES HC CAMPUS STATION OPTION FROM S. 216TH WEST STATION OPTION | | |
| 58 | SR99-F00-GX02 | SHEET INDEX KEY MAP |
| 59 | SR99-F6-PP01 | TRACK PLAN AND PROFILE STA 15+00 TO STA 30+00 |
| 60 | SR99-F7-PP02 | TRACK PLAN AND PROFILE STA 30+00 TO STA 56+00 |
| 61 | SR99-F8-PP03 | TRACK PLAN AND PROFILE STA 56+00 TO STA 82+00 |
| 62 | SR99-F9-PP04 | TRACK PLAN AND PROFILE STA 82+00 TO STA 108+00 |
| 63 | SR99-F10-PP05 | TRACK PLAN AND PROFILE STA 108+00 TO STA 121+52.74 |
| | | |
| S 260TH WEST STATION OPTION (POTENTIAL ADDITIONAL STATION) | | |
| 64 | SR99-G00-GX02 | SHEET INDEX KEYMAP |
| 65 | SR99-G1-PP05 | TRACK PLAN AND PROFILE STA 20+00 TO STA 23+00 |
| 66 | SR99-G2-PP06 | TRACK PLAN AND PROFILE STA 23+00 TO STA 49+00 |
| 67 | SR99-G3-PP07 | TRACK PLAN AND PROFILE STA 49+00 TO STA 75+00 |
| 68 | SR99-G4-PP08 | TRACK PLAN AND PROFILE STA 75+00 TO STA 101+00 |
| 69 | SR99-G5-PP09 | TRACK PLAN AND PROFILE STA 101+00 TO STA 111+87.66 |
| 70 | FWLE_S99_AP013 | S 260TH WEST STATION OPTION - SITE PLAN |
| 71 | FWLE_S99_AX013 | S 260TH WEST STATION OPTION - SECTIONS |
| | | |
| S 260TH EAST STATION OPTION (POTENTIAL ADDITIONAL STATION) | | |
| 72 | SR99-H00-GX02 | SHEET INDEX KEYMAP |
| 73 | SR99-H1-PP07 | TRACK PLAN AND PROFILE STA 20+00 TO STA 23+00 |
| 74 | SR99-H2-PP08 | TRACK PLAN AND PROFILE STA 23+00 TO STA 49+00 |
| 75 | SR99-H3-PP09 | TRACK PLAN AND PROFILE STA 49+00 TO STA 75+00 |
| 76 | SR99-H4-PP10 | TRACK PLAN AND PROFILE STA 75+00 TO STA 80+98.42 |
| 77 | FWLE_S99_AP012 | S 260TH EAST STATION OPTION - SITE PLAN |
| 78 | FWLE_S99_AX012 | S 260TH EAST STATION OPTION - SECTIONS |
| | | |
| I - NOT USED | | |
| | | |
| S 272ND REDONDO TRENCH STATION OPTION | | |
| 79 | SR99-J00-GX02 | SHEET INDEX KEYMAP |
| 80 | SR99-J1-PP08 | TRACK PLAN AND PROFILE STA 20+00 TO STA 31+00 |
| 81 | SR99-J2-PP09 | TRACK PLAN AND PROFILE STA 31+00 TO STA 57+00 |
| 82 | SR99-J3-PP10 | TRACK PLAN AND PROFILE STA 57+00 TO STA 83+00 |
| 83 | SR99-J4-PP11 | TRACK PLAN AND PROFILE STA 83+00 TO STA 109+00 |
| 84 | SR99-J5-PP12 | TRACK PLAN AND PROFILE STA 109+00 TO STA 136+00 |
| 85 | SR99-J6-PP13 | TRACK PLAN AND PROFILE STA 135+00 TO STA 161+00 |
| 86 | SR99-J7-PP14 | TRACK PLAN AND PROFILE STA 161+00 TO STA 174+00.00 |
| 87 | FWLE_S99_AP002 | S 272ND REDONDO TRENCH STATION OPTION - SITE PLAN |
| 88 | FWLE_S99_AX002 | S 272ND REDONDO TRENCH STATION OPTION - SECTIONS |
| | | |
| FEDERAL WAY SR 99 STATION OPTION | | |
| 89 | SR99-K00-GX02 | SHEET INDEX KEYMAP |
| 90 | SR99-K1-PP15 | TRACK PLAN AND PROFILE STA 20+00 TO STA 44+00 |
| 91 | SR99-K2-PP16 | TRACK PLAN AND PROFILE STA 44+00 TO STA 51+23.50 |
| 92 | FWLE_S99_AP008 | FEDERAL WAY SR 99 STATION OPTION - SITE PLAN |
| 93 | FWLE_S99_AX008 | FEDERAL WAY SR 99 STATION OPTION - SECTIONS |
| | | |

| ABBREVIATIONS | | EXISTING FEATURES | |
|---|--|-------------------|------------------------------------|
| B BP | BEGIN POINT | | RIGHT OF WAY LINE |
| C CTR CL CS | CENTER CENTERLINE CURVE TO SPIRAL | | LOT LINE |
| D DO DWG | DESIGN OPTION DRAWING | | GAS |
| E E EL EP EX | EAST/ELECTRICAL ELEVATION END POINT EXISTING | | OVERHEAD ELECTRICAL |
| F FWLE FWTC | FEDERAL WAY LINK EXTENSION FEDERAL WAY TRANSIT CENTER | | UNDERGROUND ELECTRICAL |
| G G | GAS | | WETLAND |
| H HC HORZ | HIGHLINE COLLEGE HORIZONTAL | | STREAM |
| K KC KCM KDM Kv | KING COUNTY KING COUNTY METRO KENT/DES MOINES KILOVOLTS | | TRACK CENTERLINE |
| M MPH | MILES PER HOUR | | EXISTING GROUND (PROFILE) |
| N N NB | NORTH NORTHBOUND | | CONTOUR LINE |
| O OE | OVERHEAD ELECTRICAL | PROPOSED FEATURES | |
| P PC PL PS PT PVC PVI PVT | POINT OF CURVATURE PLACE POINT OF SWITCH POINT OF TANGENCY POINT OF VERTICAL CURVATURE POINT OF VERTICAL INTERSECTION POINT OF VERTICAL TANGENCY | | PROPOSED WSDOT ROW |
| R R RD ROW | RADUIIS ROAD RIGHT OF WAY | | CITY LIMITS |
| S S SB SC SF SR ST | SOUTH SOUTH BOUND SPIRAL TO CURVE SQUARE FEET STATE ROUTE STREET, SPIRAL TO TANGENT, or SOUND TRANSIT STATION | | CONSTRUCTION FOOTPRINT |
| T TPSS TS TYP | TRACTION POWER SUBSTATION TANGENT TO SPIRAL TYPICAL | | GUIDEWAY CENTERLINE |
| V V | VELOCITY | | CURB AND SIDEWALK |
| | | | BOTTOM OF STRUCTURE (PROFILE) |
| | | | TOP OF RAIL (PROFILE) |
| | | | STATION PLATFORM |
| | | | AT-GRADE /TRENCH (BALLASTED) TRACK |
| | | | ELEVATED GUIDEWAY |
| | | | COLUMNS / STRADDLE BENTS |
| | | | LONG SPAN COLUMNS |
| | | | HEAD WALL |
| | | | TPSS BUILDING |
| | | | NEW SIGNAL |

2/25/2015 9:18:34 AM
C:\PWORKING\SEAD114117SR99-A00-GX01.DWG

CFOX



DRAFT EIS - CONCEPTUAL DESIGN

SHEET INDEX
SR 99 ALTERNATIVE

APRIL 2015

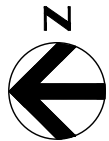
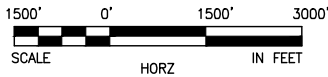
SR99-A00-GX01
2

SOUND TRANSIT FEDERAL WAY LINK EXTENSION



| SR99 SHEET LAYOUT MATRIX | | | | | | | | | | | | | | | | |
|--|---|---|---|---|---|---|---|---|---|----|----|----|----|----|----|----|
| | 1 | 2 | 3 | 4 | 5 | 6 | 7 | 8 | 9 | 10 | 11 | 12 | 13 | 14 | 15 | 16 |
| A - SR 99 ALTERNATIVE | X | X | X | X | X | X | X | X | X | X | X | X | X | X | X | X |
| B - S 216TH WEST STATION OPTION (POTENTIAL ADDITIONAL STATION) | X | X | X | | | | | | | | | | | | | |
| C - S 216TH EAST STATION OPTION (POTENTIAL ADDITIONAL STATION) | | X | X | | | | | | | | | | | | | |
| D - KENT/DES MOINES SR 99 MEDIAN STATION OPTION | | | | X | X | X | | | | | | | | | | |
| E - KENT/DES MOINES SR 99 EAST STATION OPTION | | | | X | X | X | X | | | | | | | | | |
| F - KENT/DES MOINES HC CAMPUS STATION OPTION | | | X | X | X | X | X | | | | | | | | | |
| F - KDM HC CAMPUS OPTION FROM S 216TH WEST STATION OPTION | | | | | | X | X | X | X | X | | | | | | |
| G - S 260TH WEST STATION OPTION (POTENTIAL ADDITIONAL STATION) | | | | | X | X | X | X | X | | | | | | | |
| H - S 260TH EAST STATION OPTION (POTENTIAL ADDITIONAL STATION) | | | | | | | X | X | X | X | | | | | | |
| J - S 272ND REDONDO TRENCH STATION OPTION | | | | | | | | X | X | X | X | X | X | X | | |
| K - FEDERAL WAY SR 99 STATION OPTION | | | | | | | | | | | | | | | X | X |

I - NOT USED



2/25/2015 9:20:31 AM
C:\P\WORKING\SEAD\11417\SR99-A00-GX02.DWG
CFOX

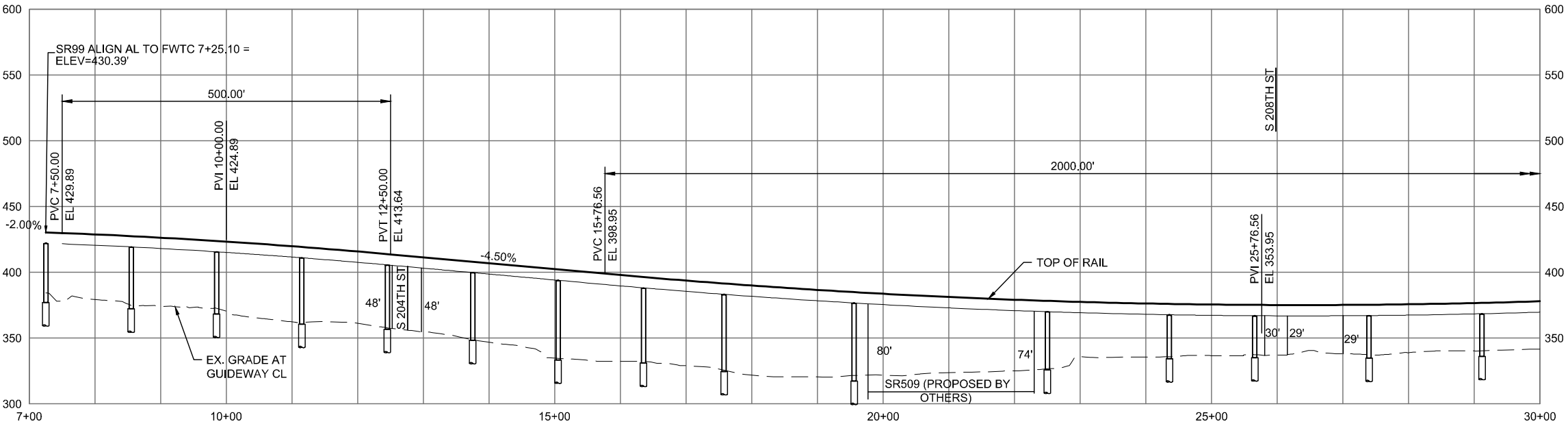
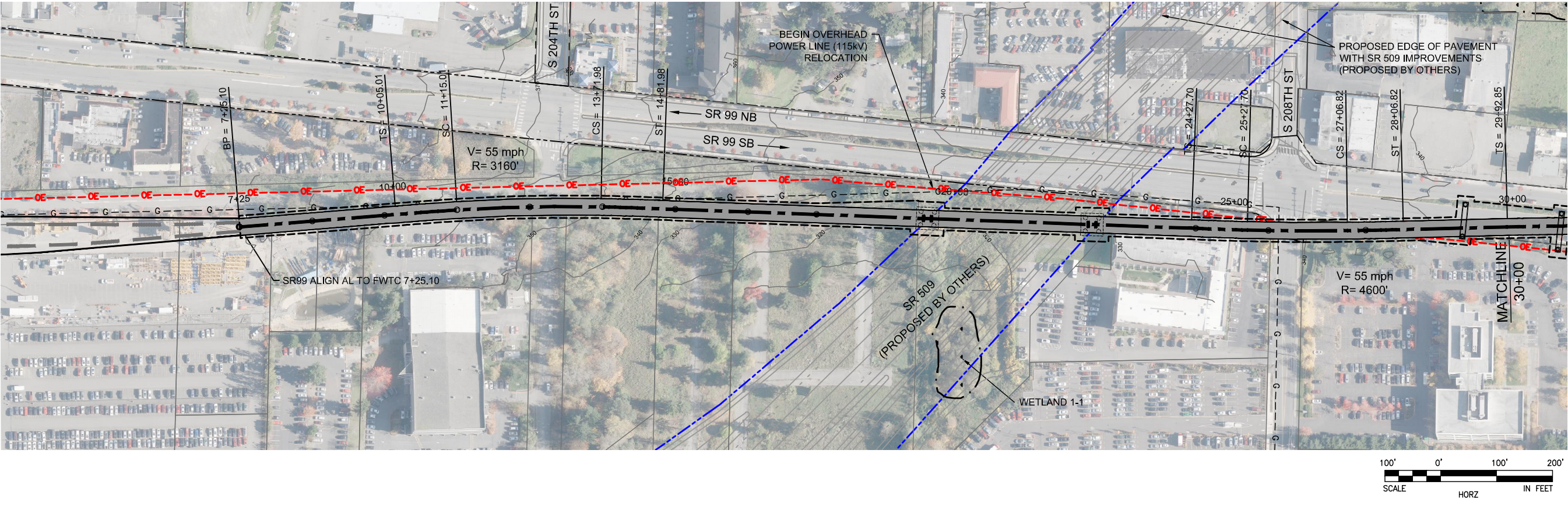


DRAFT EIS - CONCEPTUAL DESIGN
SR99 ALTERNATIVE
SHEET INDEX KEYMAP

APRIL 2015

SR99-A00-GX02
3

SOUND TRANSIT FEDERAL WAY LINK EXTENSION



2/25/2015 2:19:35 PM C:\WORKING\SEAD\114119A_P\FILE SR99 MAINLINE.DWG C:\FOX

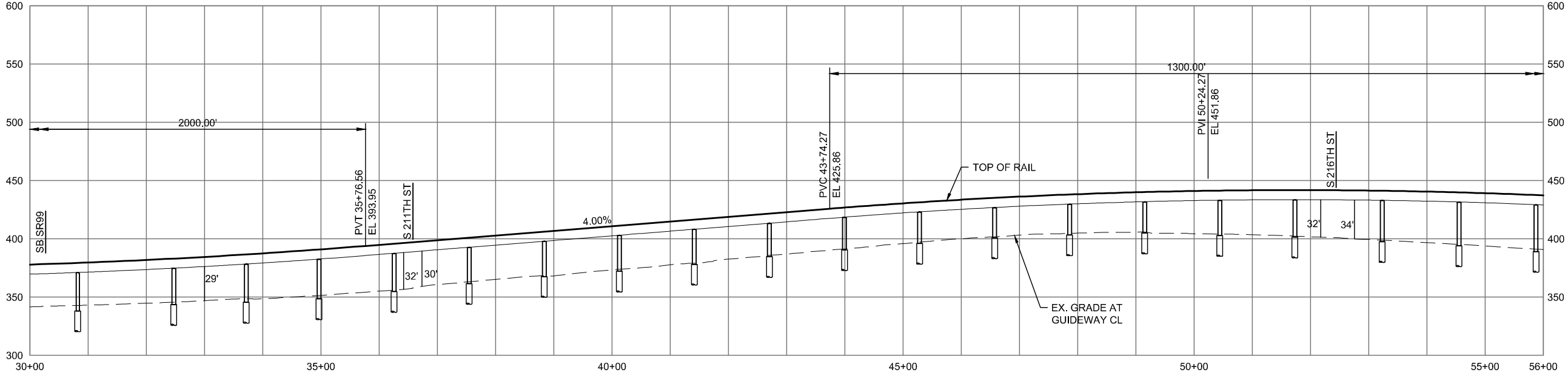
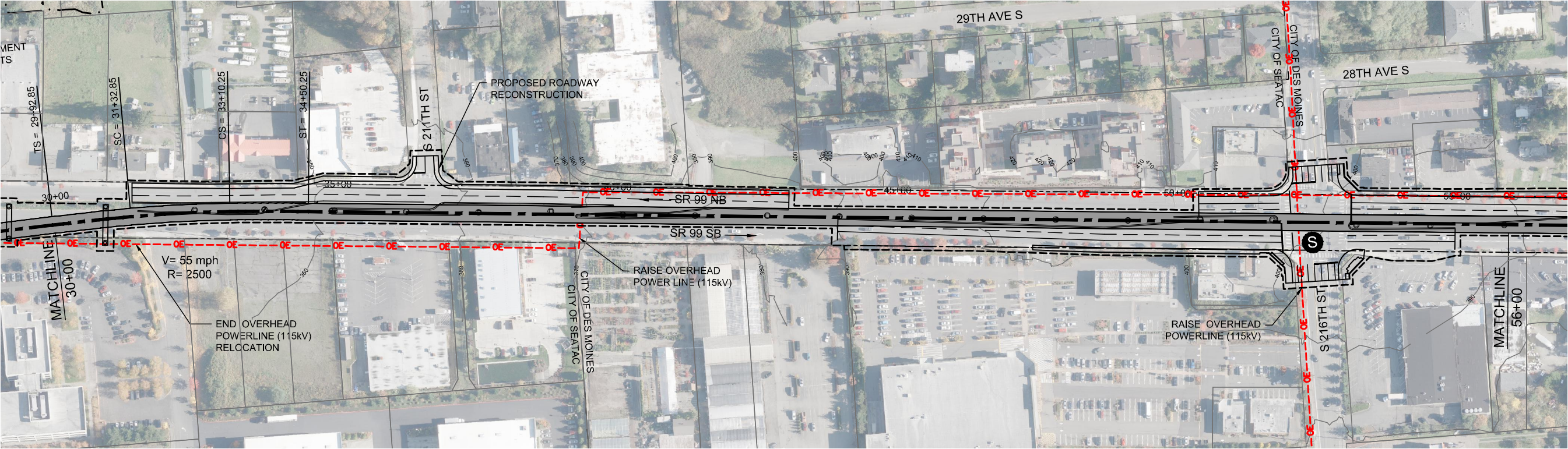


DRAFT EIS - CONCEPTUAL DESIGN
TRACK PLAN & PROFILE AND ROADWAY RECONSTRUCTION
SR 99 ALTERNATIVE
STA 7+25 TO STA 30+00

APRIL 2015

SR99-A1-PP01
4

SOUND TRANSIT FEDERAL WAY LINK EXTENSION



2/25/2015 2:20:14 PM C:\WORKING\SEAD\114119A_P\FILE SR99 MAINLINE.DWG C:\FOX

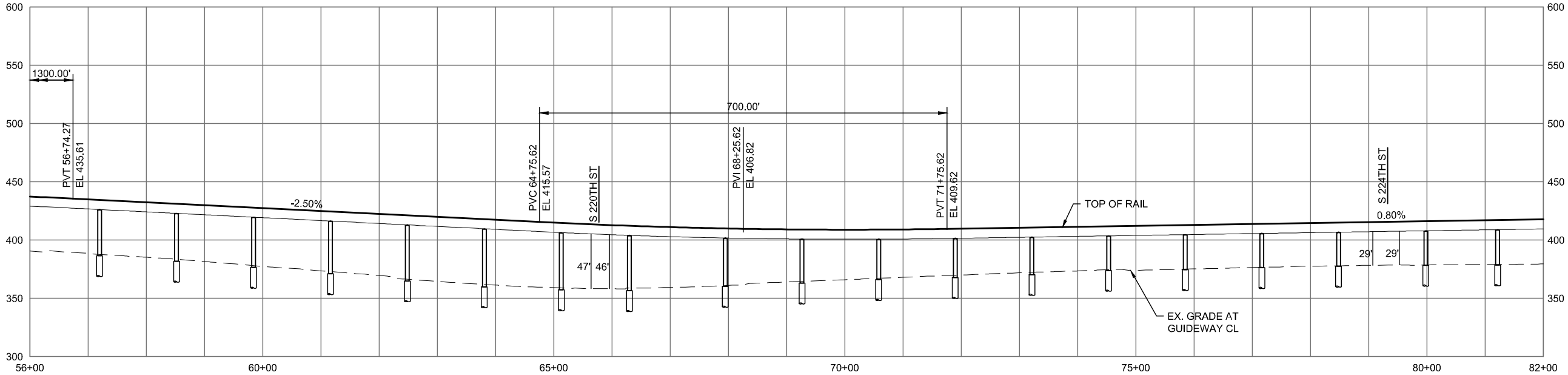
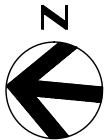
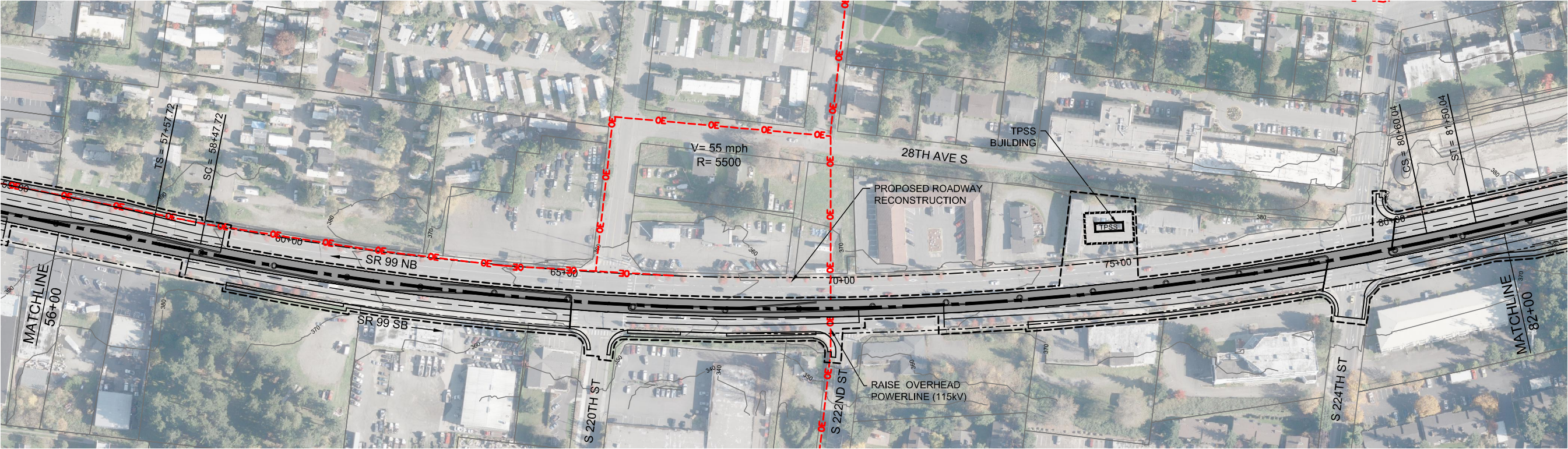


DRAFT EIS - CONCEPTUAL DESIGN
TRACK PLAN & PROFILE AND ROADWAY RECONSTRUCTION
SR 99 ALTERNATIVE
STA 30+00 TO STA 56+00

APRIL 2015

SR99-A2-PP02
5

SOUND TRANSIT FEDERAL WAY LINK EXTENSION



2/25/2015 2:20:36 PM C:\WORKING\SEAD\114119A_P\FILE SR99 MAINLINE.DWG C:\OX

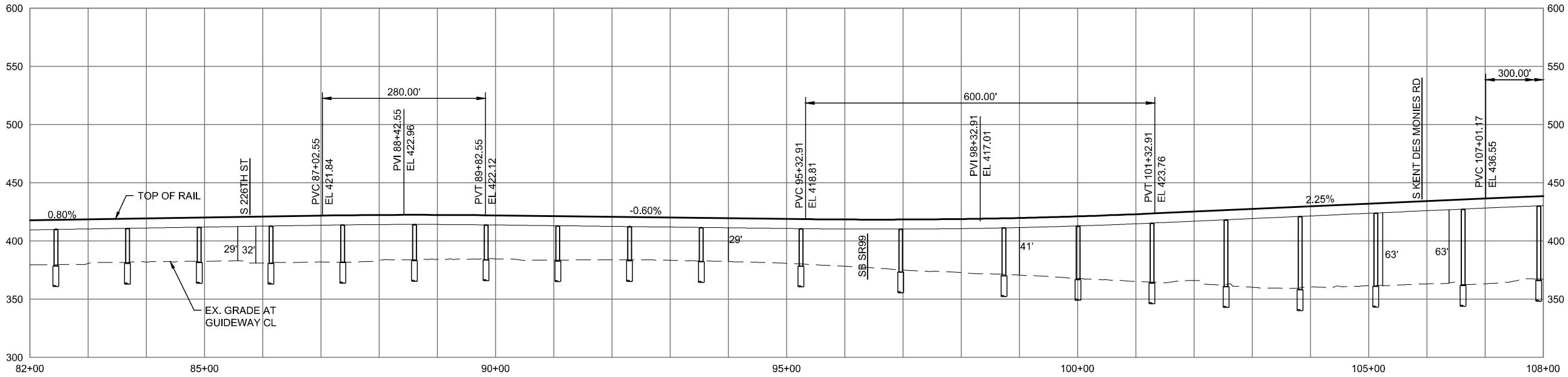
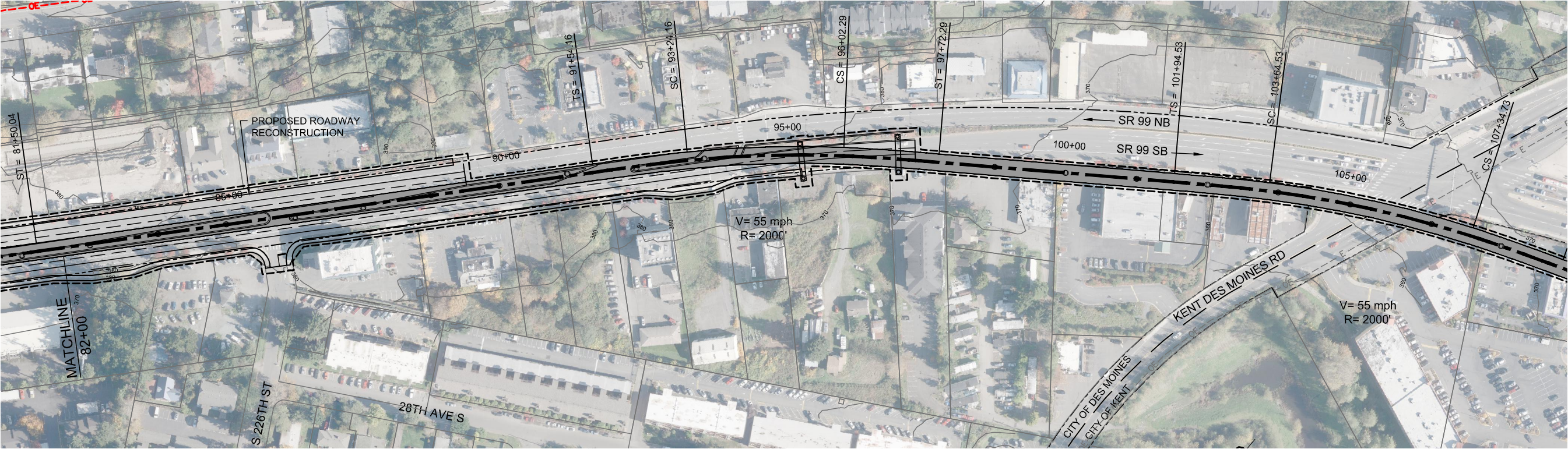


DRAFT EIS - CONCEPTUAL DESIGN
TRACK PLAN & PROFILE AND ROADWAY RECONSTRUCTION
SR 99 ALTERNATIVE
STA 56+00 TO STA 82+00

APRIL 2015

SR99-A3-PP03
6

SOUND TRANSIT FEDERAL WAY LINK EXTENSION



2/25/2015 2:21:00 PM C:\P\WORKING\SEAD\114119A_P\FILE SR99 MAINLINE.DWG CFOX

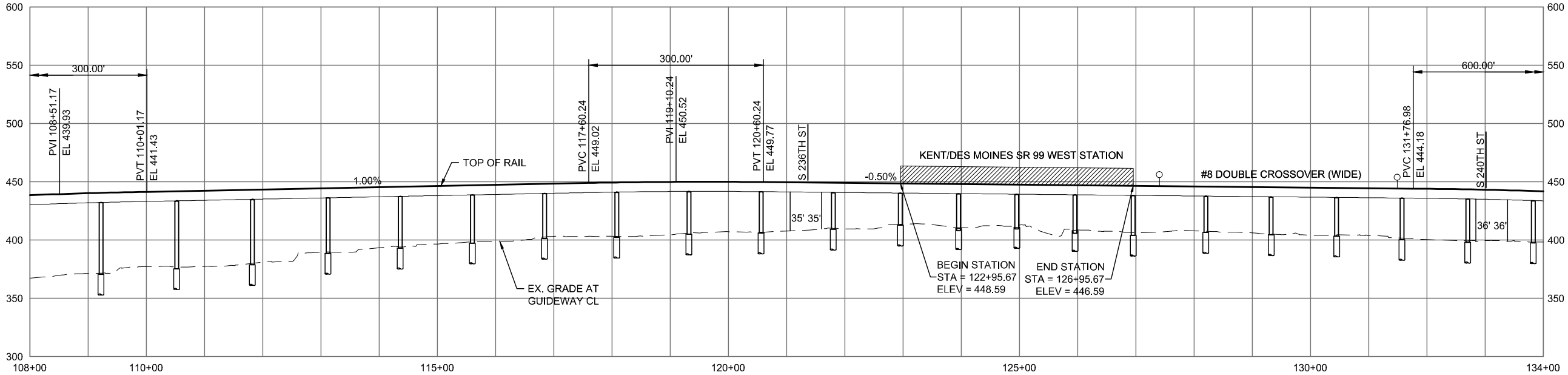
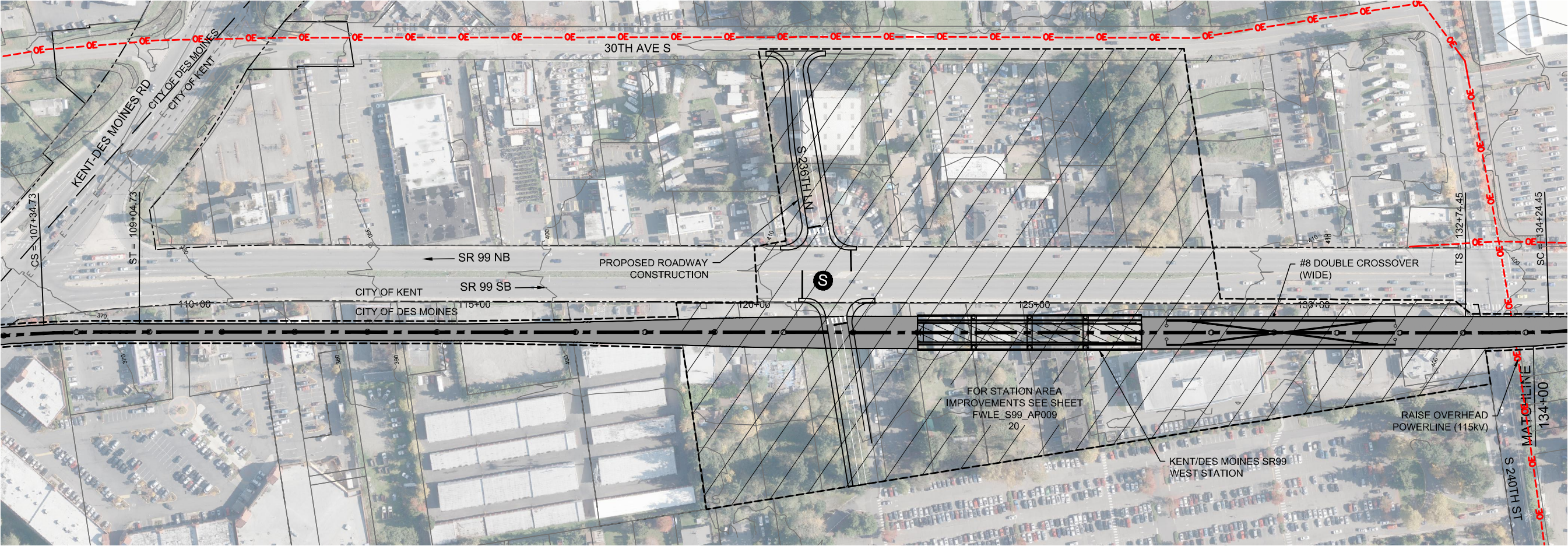


DRAFT EIS - CONCEPTUAL DESIGN
TRACK PLAN & PROFILE AND ROADWAY RECONSTRUCTION
SR 99 ALTERNATIVE
STA 82+00 TO STA 108+00

APRIL 2015

SR99-A4-PP04
7

SOUND TRANSIT FEDERAL WAY LINK EXTENSION



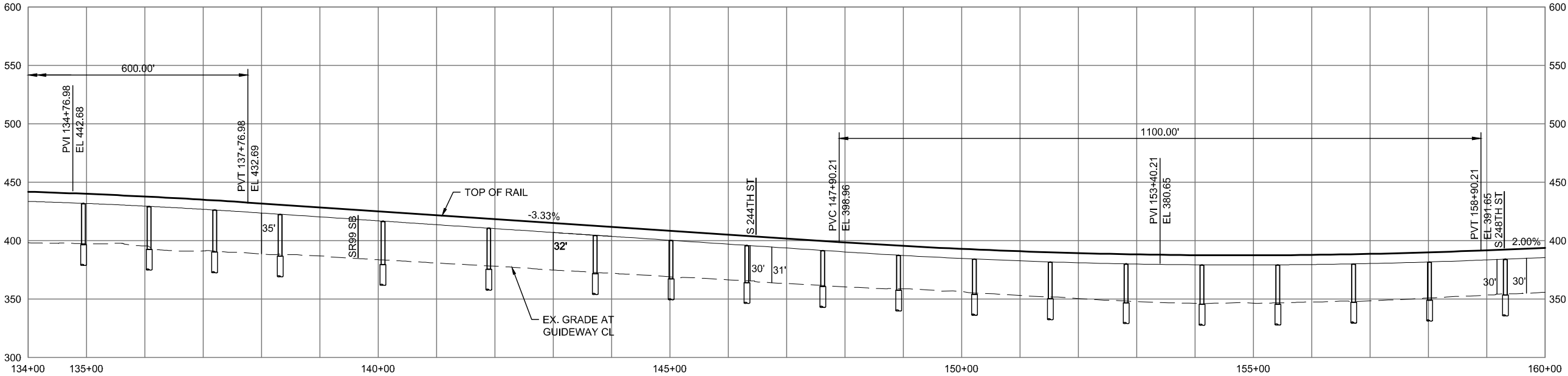
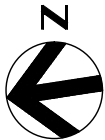
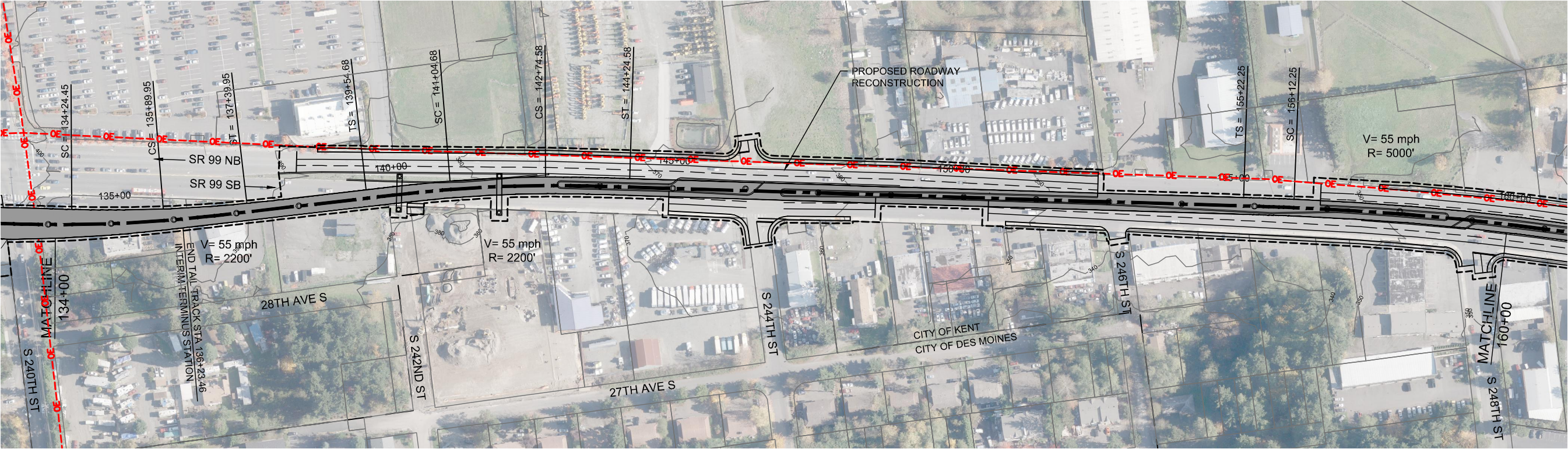
DRAFT EIS - CONCEPTUAL DESIGN
TRACK PLAN & PROFILE AND ROADWAY RECONSTRUCTION
SR 99 ALTERNATIVE
STA 108+00 TO STA 134+00



APRIL 2015

SR99-A5-PP05
8

SOUND TRANSIT FEDERAL WAY LINK EXTENSION



2/25/2015 2:21:45 PM C:\WORKING\SEAD\114119A_P\FILE SR99 MAINLINE.DWG C:\OX

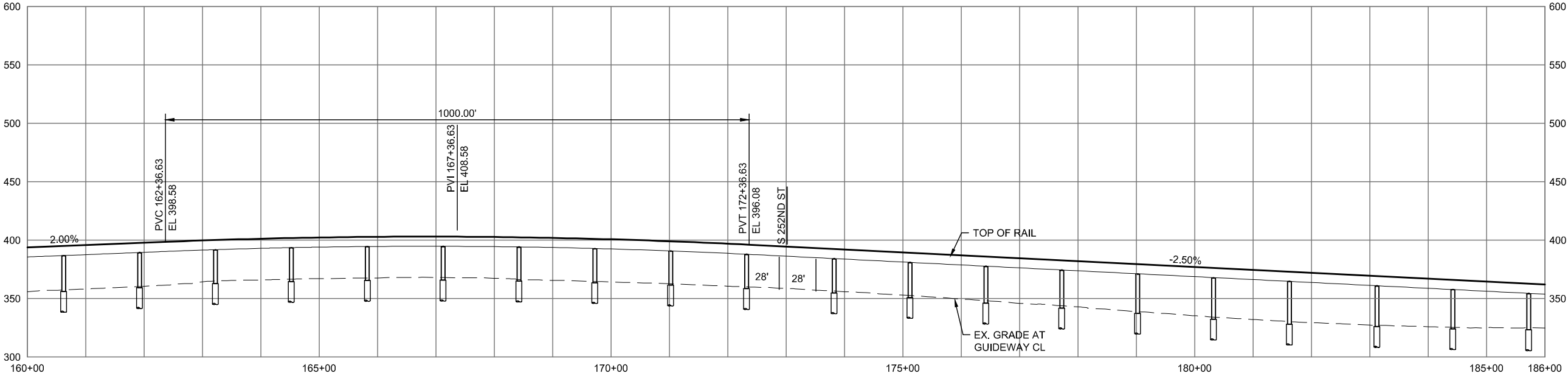
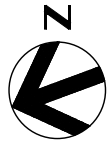
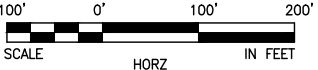
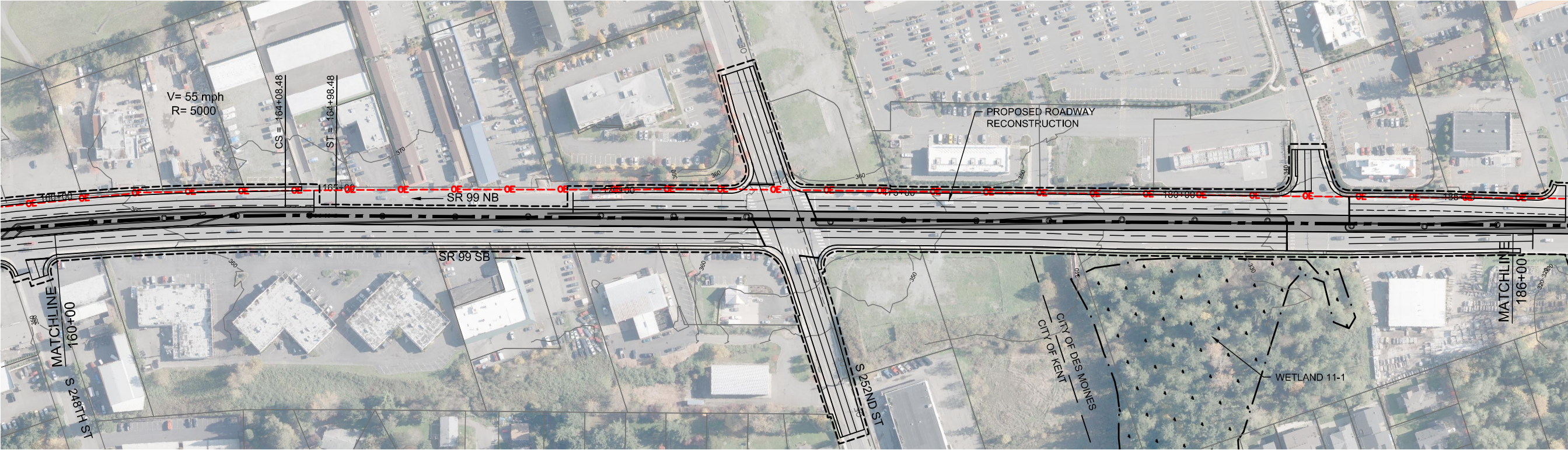


DRAFT EIS - CONCEPTUAL DESIGN
TRACK PLAN & PROFILE AND ROADWAY RECONSTRUCTION
SR 99 ALTERNATIVE
STA 134+00 TO STA 160+00

APRIL 2015

SR99-A6-PP06
9

SOUND TRANSIT FEDERAL WAY LINK EXTENSION



2/25/2015 2:22:09 PM C:\P\WORKING\SEAD\111119A_P\FILE SR99 MAINLINE.DWG C:\FOX

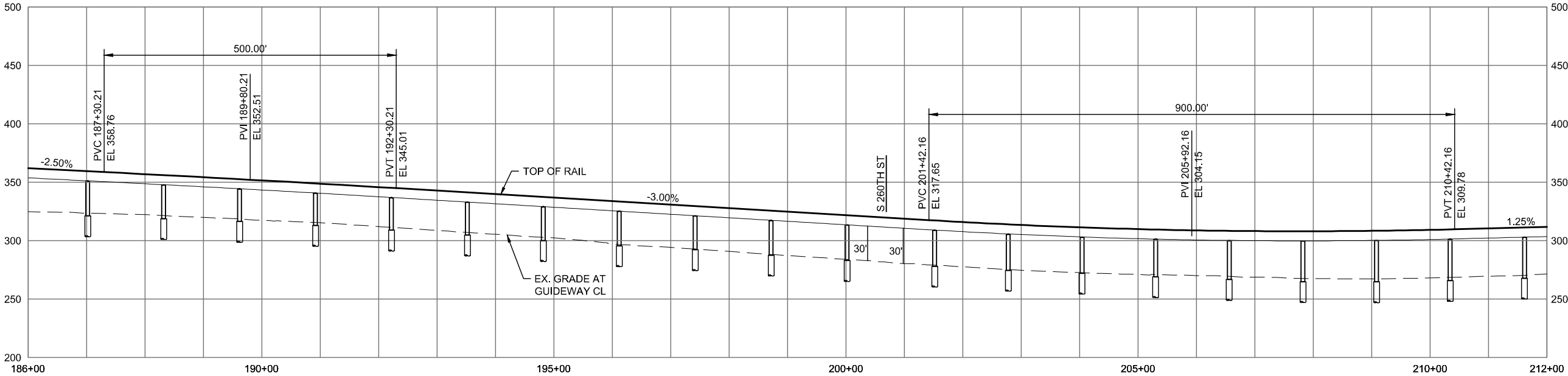
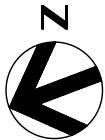
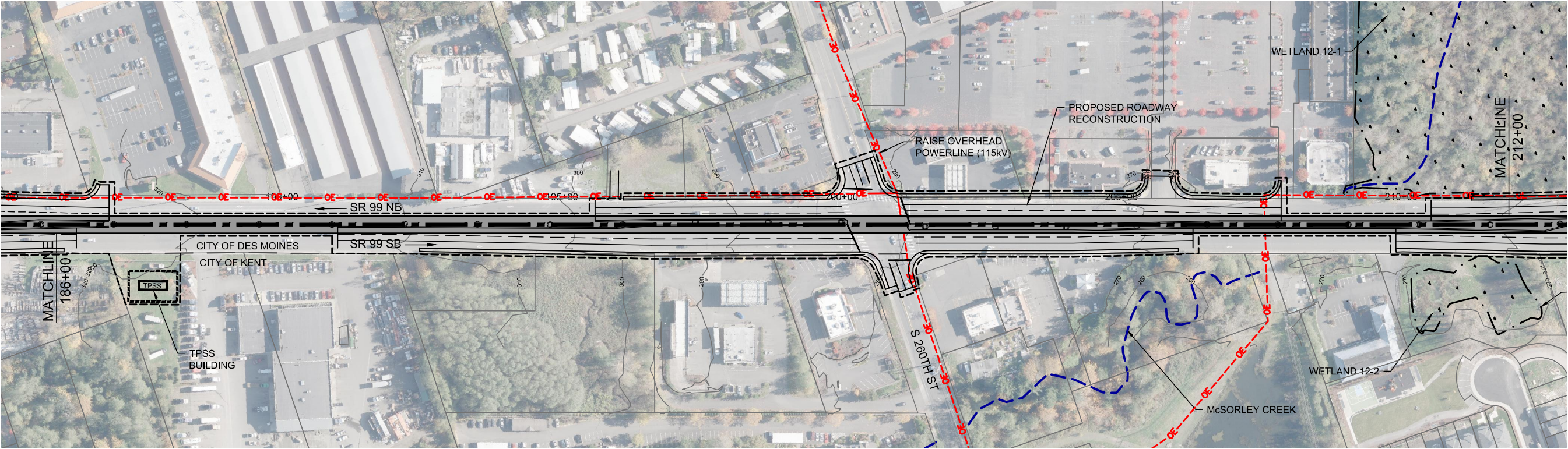


DRAFT EIS - CONCEPTUAL DESIGN
TRACK PLAN & PROFILE AND ROADWAY RECONSTRUCTION
SR 99 ALTERNATIVE
STA 160+00 TO STA 186+00

APRIL 2015

SR99-A7-PP07
10

SOUND TRANSIT FEDERAL WAY LINK EXTENSION



2/25/2015 2:22:33 PM C:\P\WORKING\SEAD\114119A_P\FILE SR99 MAINLINE.DWG CFOX

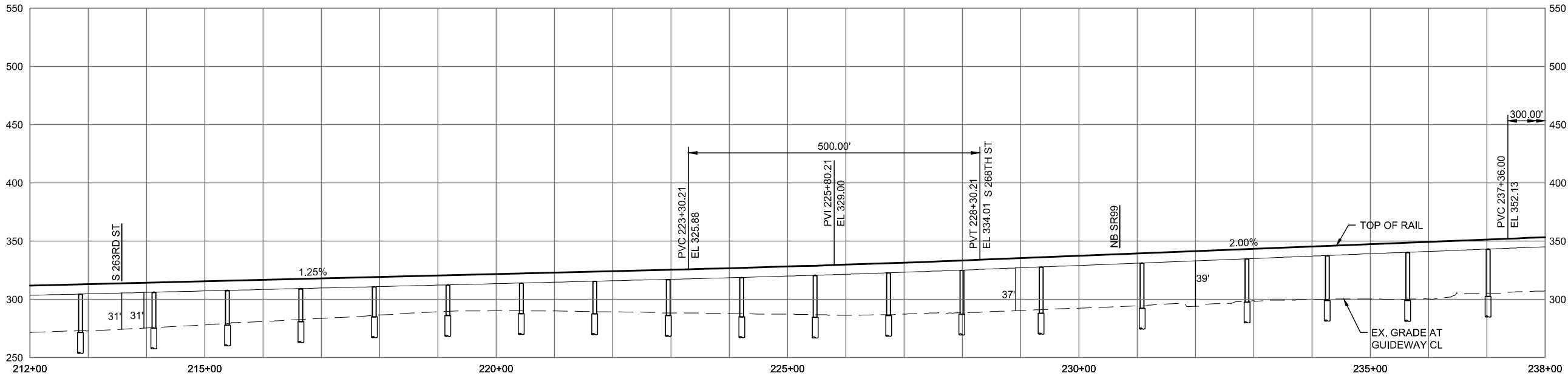
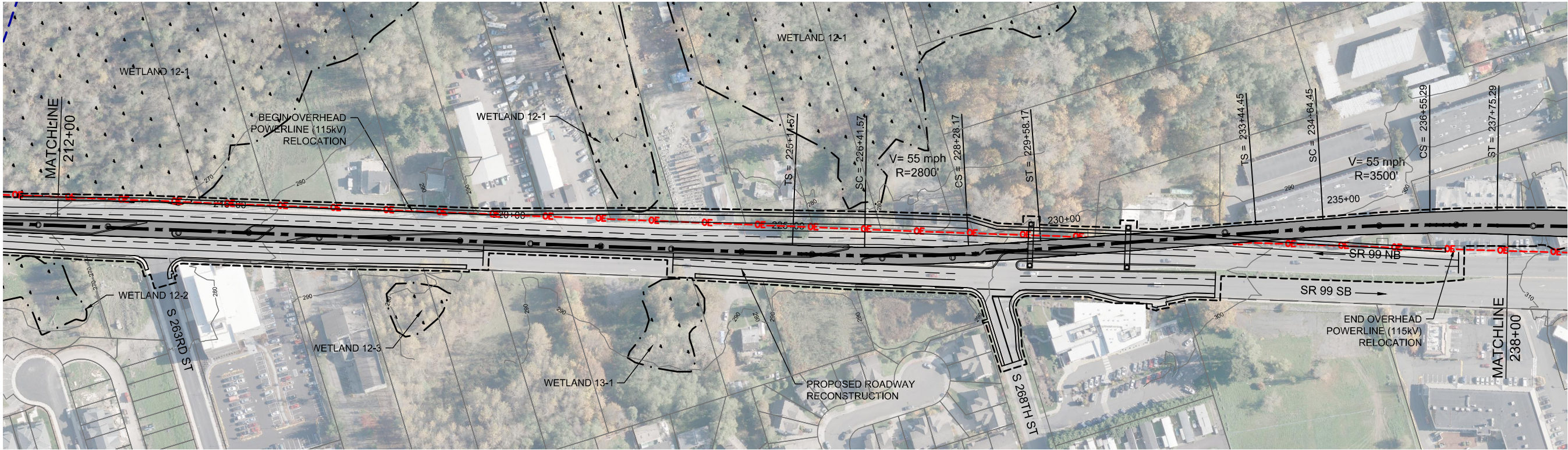


DRAFT EIS - CONCEPTUAL DESIGN
TRACK PLAN & PROFILE AND ROADWAY RECONSTRUCTION
SR 99 ALTERNATIVE
STA 186+00 TO STA 212+00

APRIL 2015

SR99-A8-PP08
11

SOUND TRANSIT FEDERAL WAY LINK EXTENSION



DRAFT EIS - CONCEPTUAL DESIGN
TRACK PLAN & PROFILE AND ROADWAY RECONSTRUCTION
SR 99 ALTERNATIVE
STA 212+00 TO STA 238+00

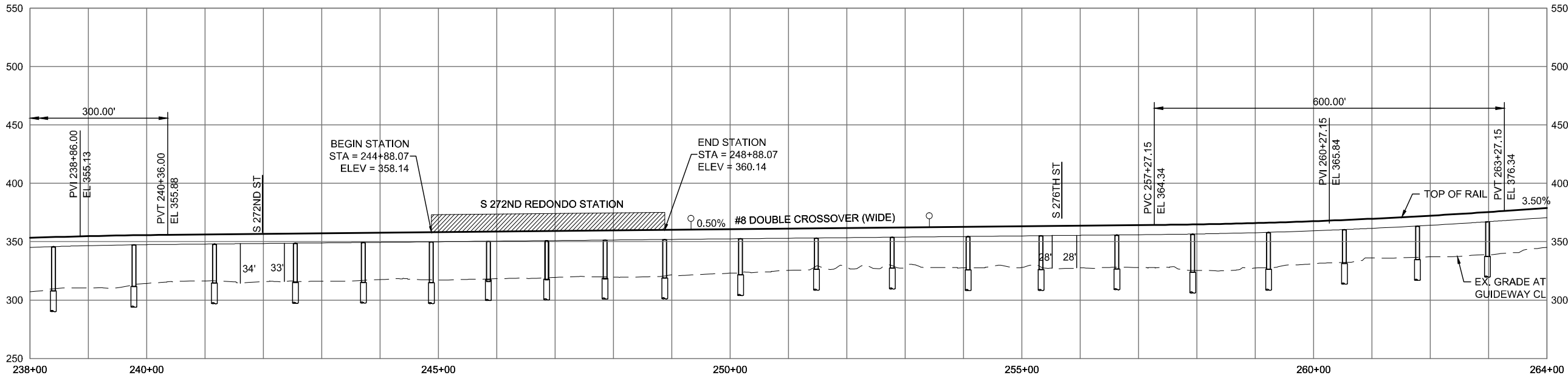
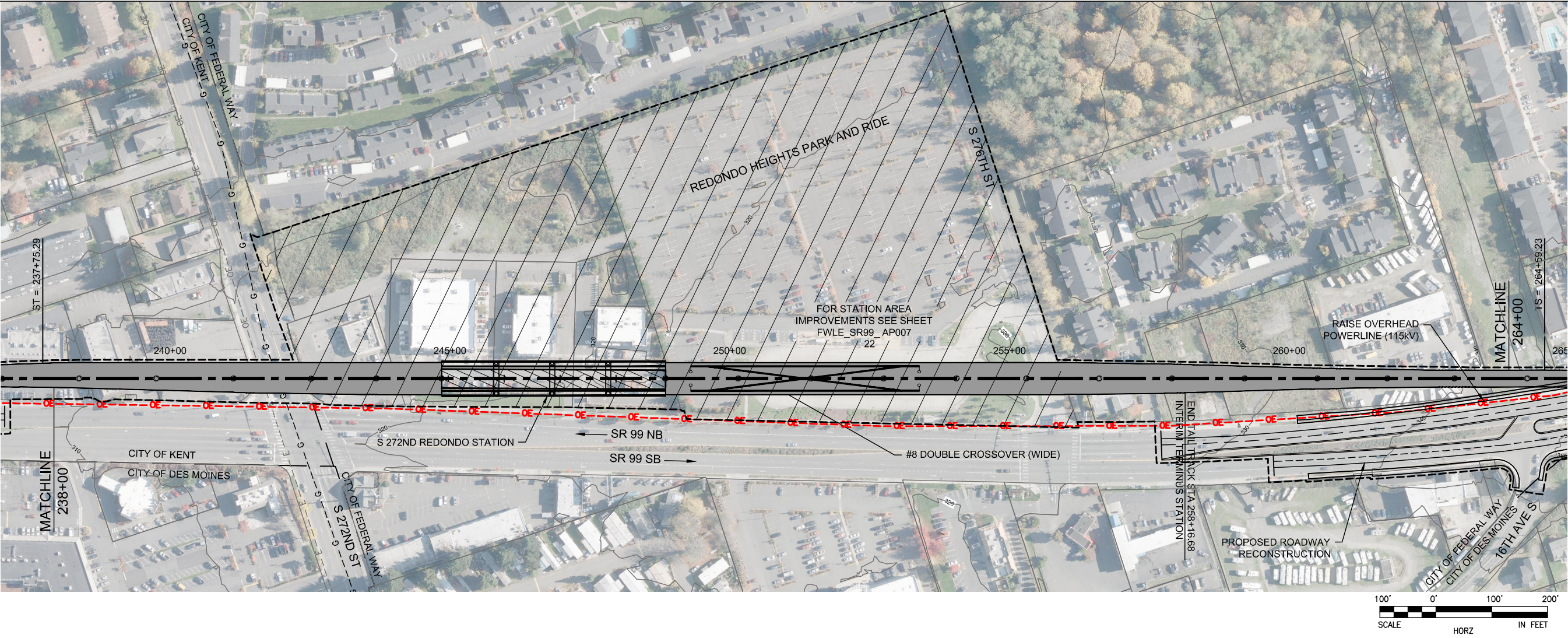


APRIL 2015

SR99-A9-PP09
12

2/25/2015 2:22:57 PM C:\P\WORKING\SEAD\114119A_P\FILE SR99 MAINLINE.DWG C:\FOX

SOUND TRANSIT FEDERAL WAY LINK EXTENSION



2/25/2015 2:23:21 PM C:\WORKING\SEAD\114119A_PWL_SR99_MAINLINE.DWG C:\FOX

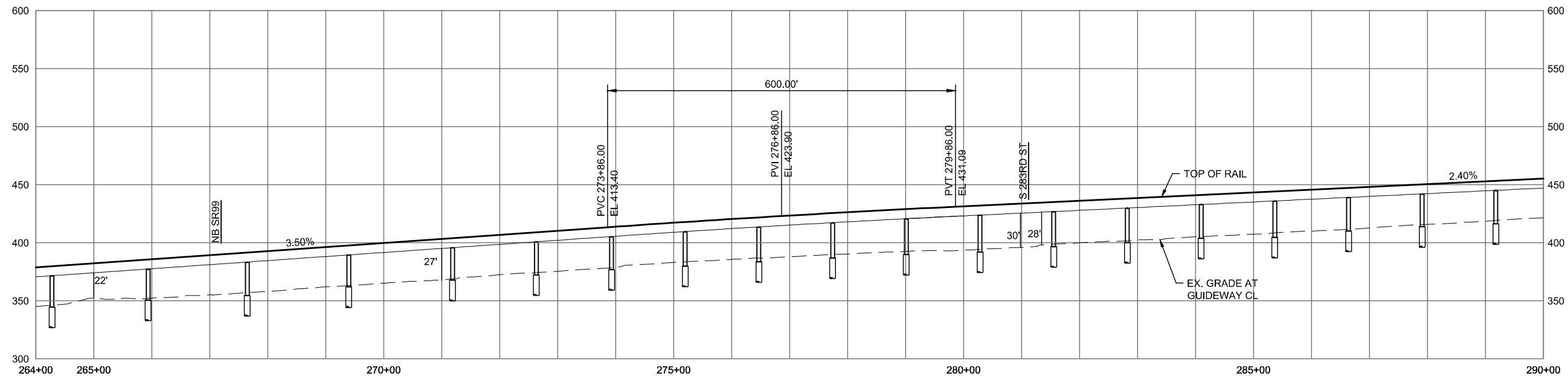
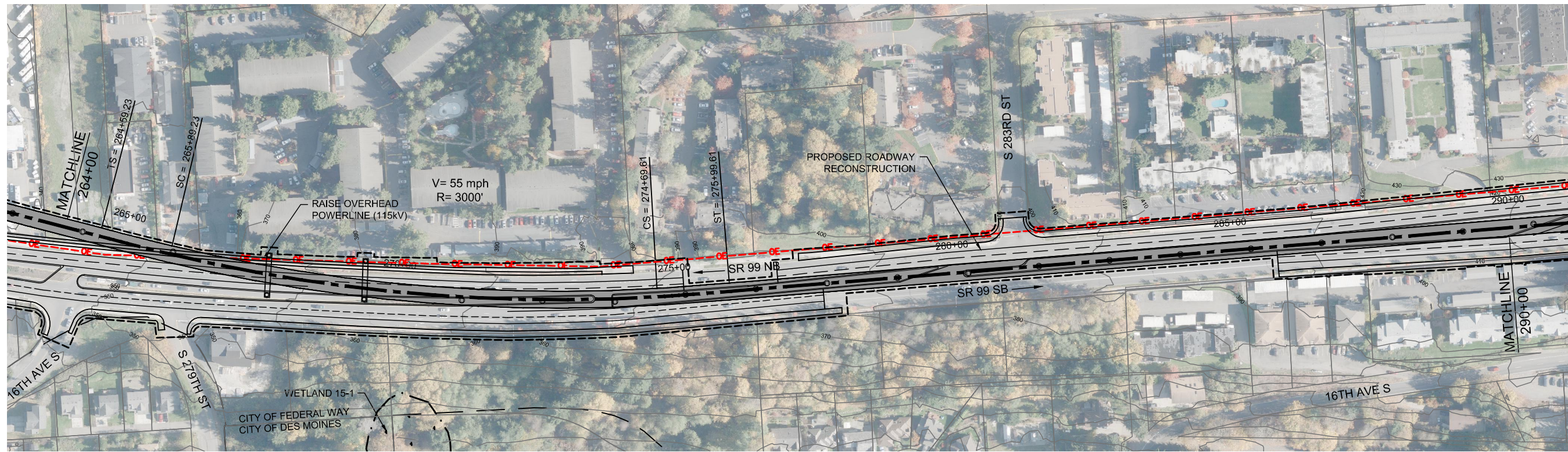


DRAFT EIS - CONCEPTUAL DESIGN
TRACK PLAN & PROFILE AND ROADWAY RECONSTRUCTION
SR 99 ALTERNATIVE
STA 238+00 TO STA 264+00

APRIL 2015

SR99-A10-PP10
13

SOUND TRANSIT FEDERAL WAY LINK EXTENSION



2/25/2015 2:23:44 PM C:\WORKING\SEAD\114119A_P\FILE SR99 MAINLINE.DWG C:\FOX

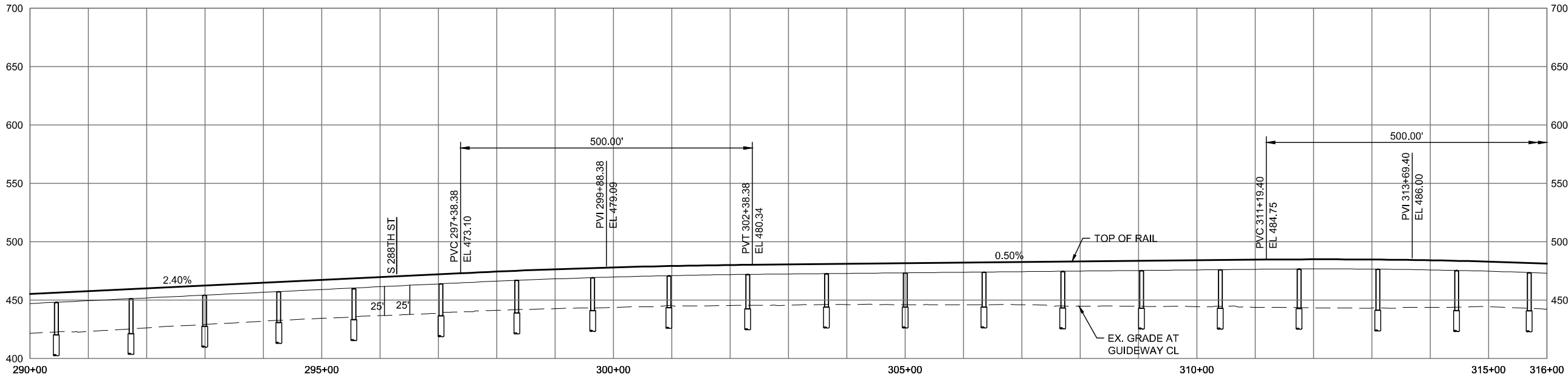
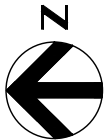
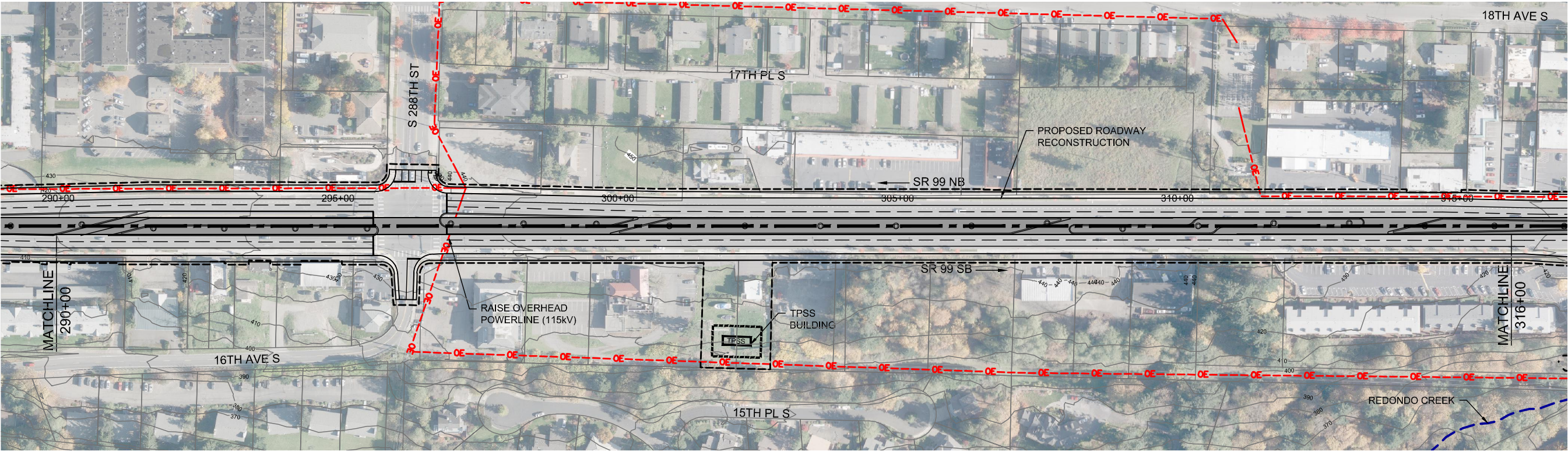


DRAFT EIS - CONCEPTUAL DESIGN
TRACK PLAN & PROFILE AND ROADWAY RECONSTRUCTION
SR 99 ALTERNATIVE
STA 264+00 TO STA 290+00

APRIL 2015

SR99-A11-PP11
14

SOUND TRANSIT FEDERAL WAY LINK EXTENSION



2/25/2015 2:24:06 PM C:\P\WORKING\SEAD\114119A_P\FILE SR99 MAINLINE.DWG C:\OX

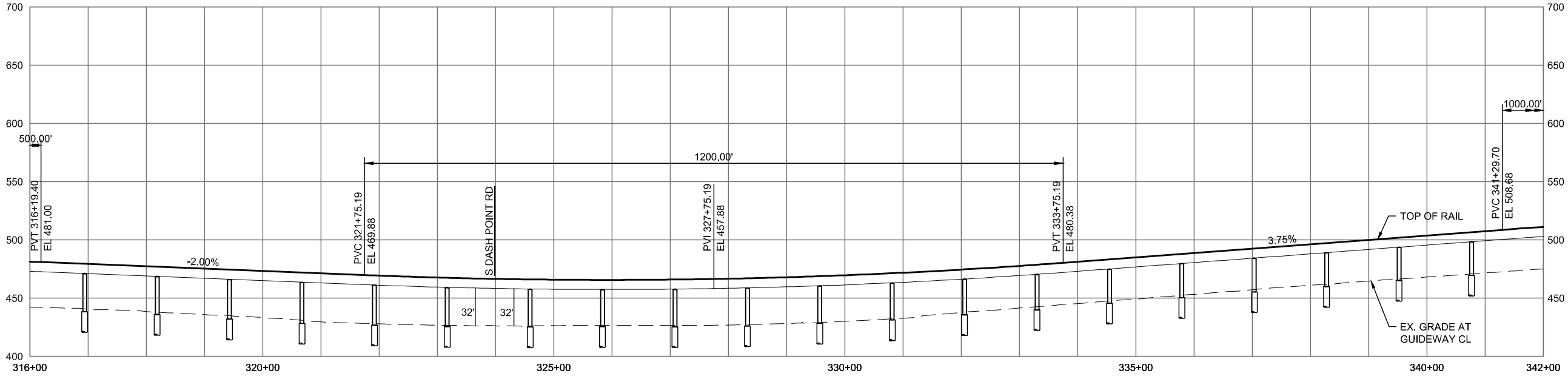
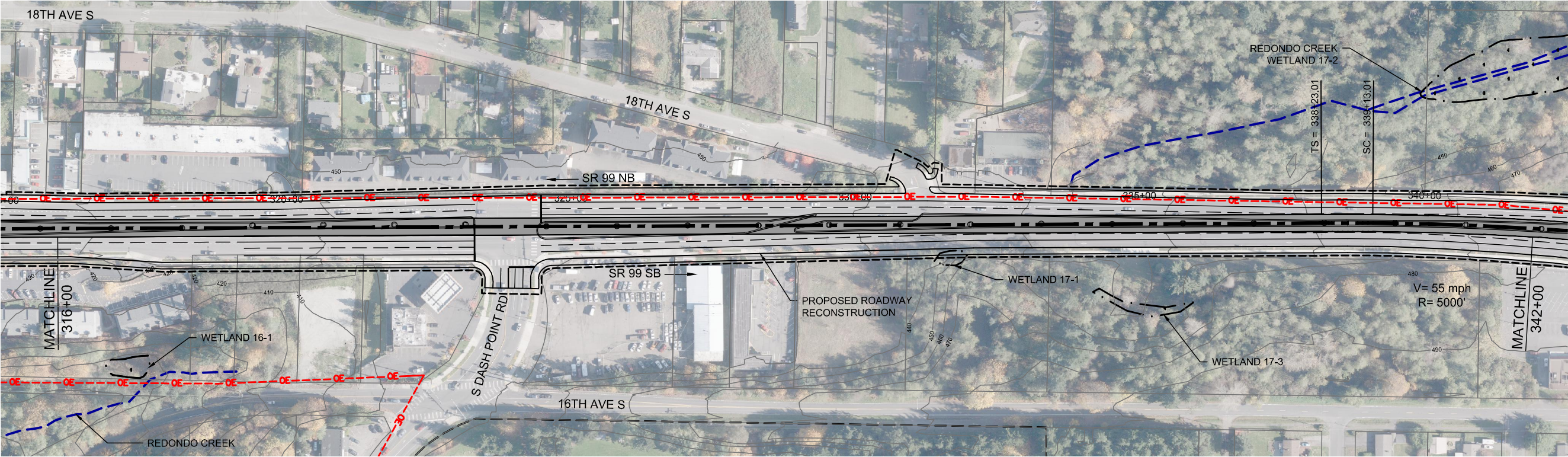


DRAFT EIS - CONCEPTUAL DESIGN
TRACK PLAN & PROFILE AND ROADWAY RECONSTRUCTION
SR 99 ALTERNATIVE
STA 290+00 TO STA 316+00

APRIL 2015

SR99-A12-PP12
15

SOUND TRANSIT FEDERAL WAY LINK EXTENSION



2/25/2015 2:24:28 PM C:\P\WORKING\SEAD\114119A_P\FILE SR99 MAINLINE.DWG C:\P\

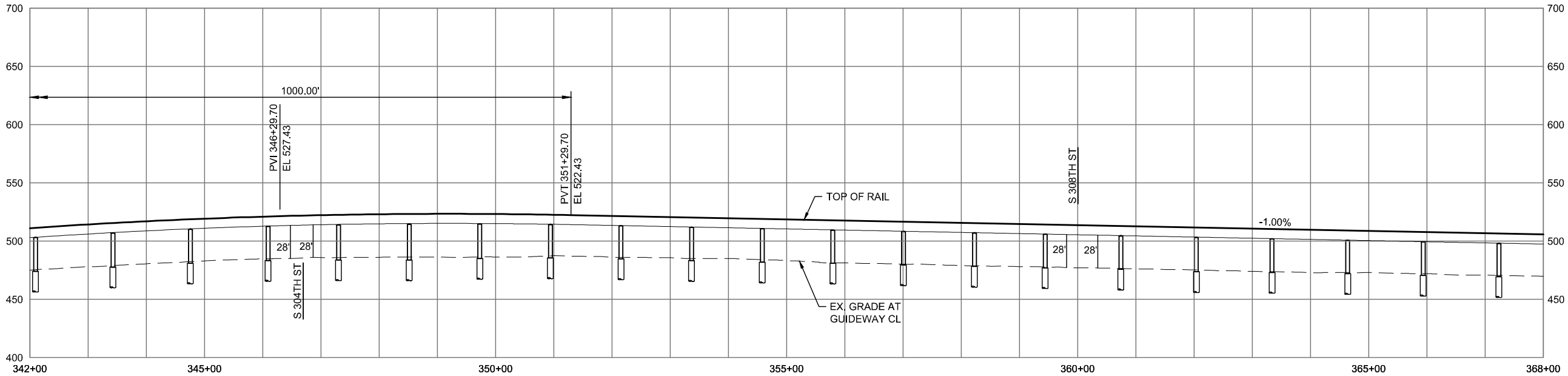
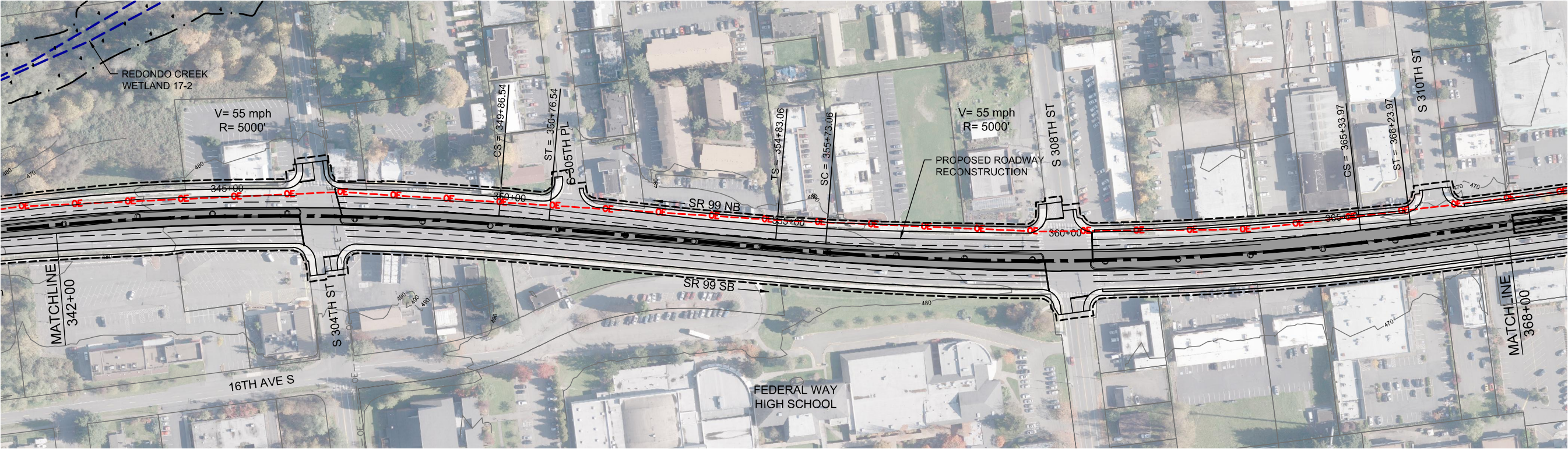


DRAFT EIS - CONCEPTUAL DESIGN
TRACK PLAN & PROFILE AND ROADWAY RECONSTRUCTION
SR 99 ALTERNATIVE
STA 316+00 TO STA 342+00

APRIL 2015

SR99-A13-PP13
16

SOUND TRANSIT FEDERAL WAY LINK EXTENSION



2/25/2015 2:24:50 PM C:\P\WORKING\SEAD\114119A_P\FILE SR99 MAINLINE.DWG C:\FOX

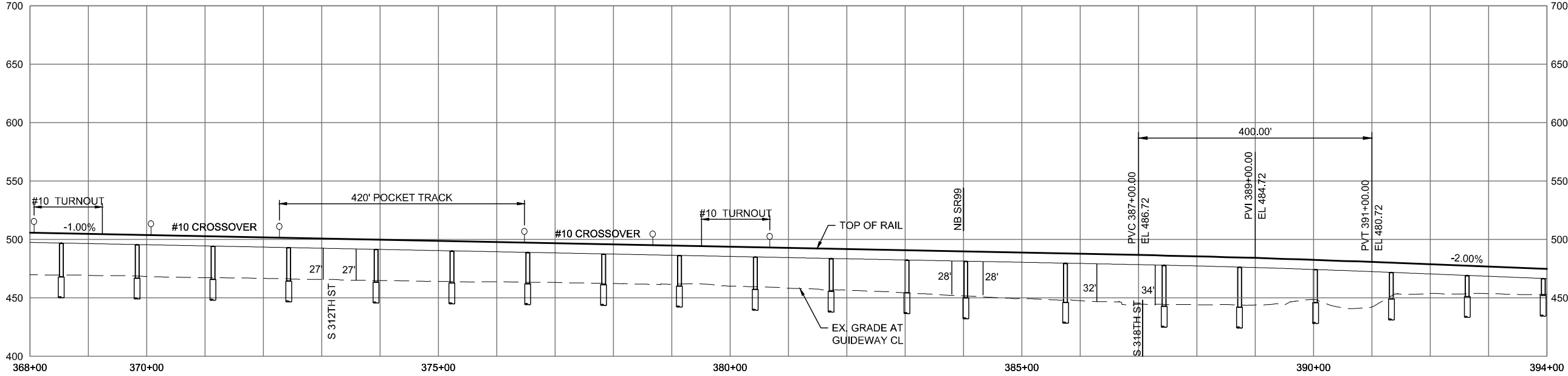
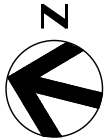
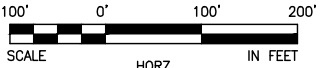
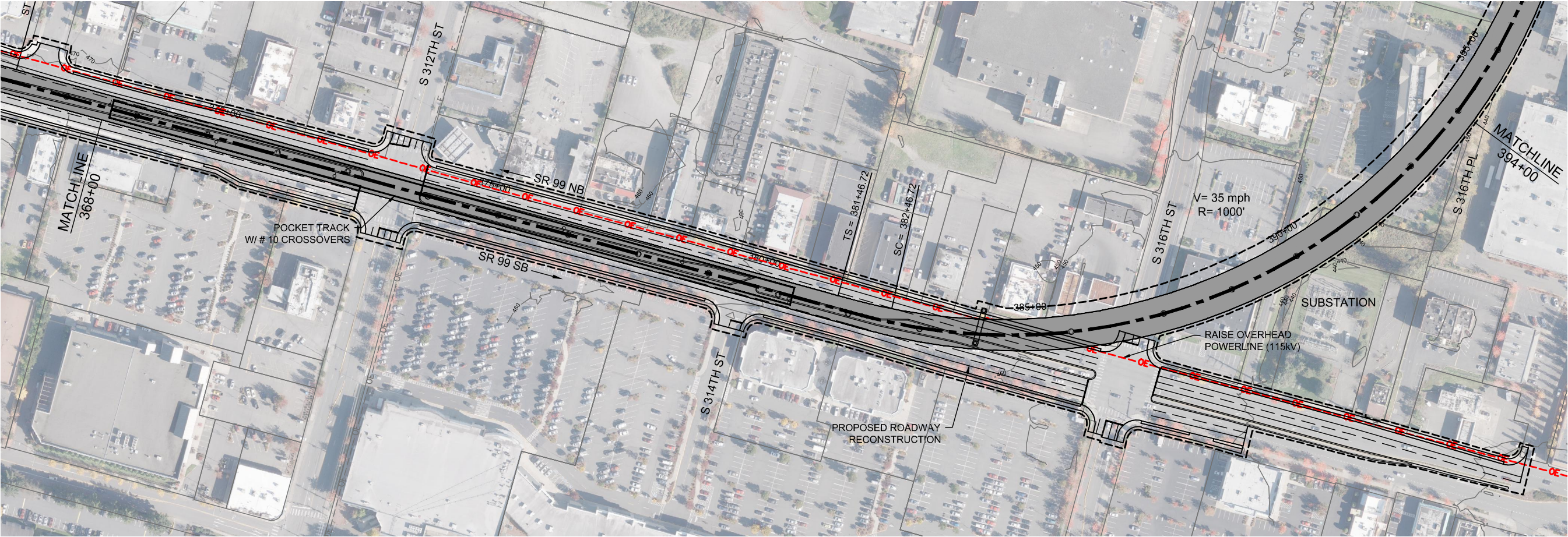


DRAFT EIS - CONCEPTUAL DESIGN
TRACK PLAN & PROFILE AND ROADWAY RECONSTRUCTION
SR 99 ALTERNATIVE
STA 342+00 TO STA 368+00

APRIL 2015

SR99-A14-PP14
17

SOUND TRANSIT FEDERAL WAY LINK EXTENSION



2/25/2015 2:25:14 PM C:\P\WORKING\SEAD\114119A_P\FILE SR99 MAINLINE.DWG C:\FOX



DRAFT EIS - CONCEPTUAL DESIGN
TRACK PLAN & PROFILE AND ROADWAY RECONSTRUCTION
SR 99 ALTERNATIVE
STA 368+00 TO STA 394+00

APRIL 2015

SR99-A15-PP15
18