

Federal Way Link Extension

Draft Environmental Impact Statement

CONCEPTUAL DESIGN DRAWINGS

Appendix F



Contents

SR 99 Alternative: pp. 1-25

- S 216th West Station Option: pp. 26-31
- S 216th East Station Option: pp. 32-36
- Kent/Des Moines SR 99 Median Station Option: pp. 37-42
- Kent/Des Moines SR 99 East Station Option: pp. 43-49
- Kent/Des Moines HC Campus Station Option: pp. 50-57
- Kent/Des Moines HC Campus Station Option from S 216th West Station Option: pp. 58-63
- S 260th West Station Option: pp. 64-71
- S 260th East Station Option: pp. 72-78
- S 272nd Redondo Trench Station Option: pp. 79-88
- Federal Way SR 99 Station Option: pp. 89-93

I-5 Alternative: pp. 94-118

- Kent/Des Moines At-Grade Station Option: pp. 119-124
- Kent/Des Moines SR 99 East Station Option: pp. 125-130
- Landfill Median Alignment Option: pp.131-134
- Federal Way I-5 Station Option: pp. 135-138
- Federal Way S 320th Park-and-Ride Station Option: pp. 139-143

SR 99 to I-5 Alternative: pp. 144-151

I-5 to SR 99 Alternative: pp. 152-160

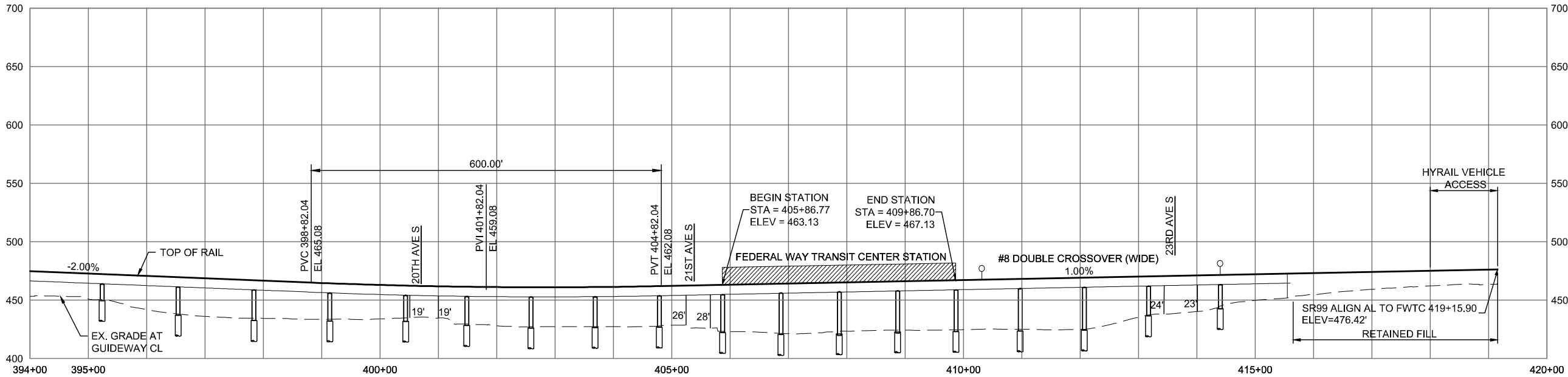
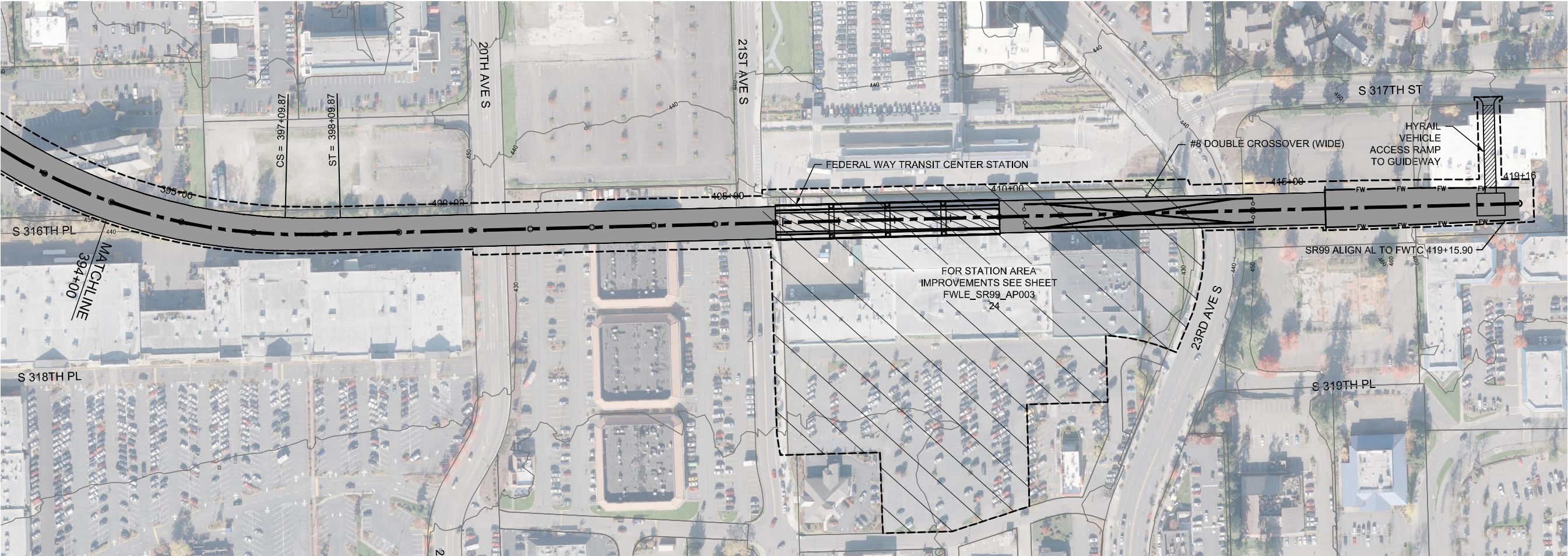
- S 260th West Station Option: pp. 161-163

This page intentionally left blank.

DRAFT EIS - CONCEPTUAL DESIGN SR 99 ALTERNATIVE

This page intentionally left blank.

SOUND TRANSIT FEDERAL WAY LINK EXTENSION



DRAFT EIS - CONCEPTUAL DESIGN
TRACK PLAN & PROFILE AND ROADWAY RECONSTRUCTION
SR 99 ALTERNATIVE
STA 394+00 TO STA 419+15.90

APRIL 2015

SR99-A16-PP16
19



SOUND TRANSIT FEDERAL WAY LINK EXTENSION



7/17/2014 11:36:52 AM J:\HAMMERQUIST\3\BWMH PROJECTS\67612\FEDERAL WAY TRANSIT EXTENSION\2 CLIENT\2 DATA\INCOMING HDR\40717 UPDATED TITLEBLOCK.DWG

- STATION PLAZA

VERTICAL CIRCULATION

TICKETING / ENTRY HALL

PLATFORM

ANCILLARY SPACES

TPSS
- BUS LAYOVER

BUS PICK-UP / DROP OFF

PARATRANSIT

BICYCLE STORAGE

CONSTRUCTION STAGING / PARKING
- S

SIGNALIZED INTERSECTION (EXISTING)

S

SIGNALIZED INTERSECTION (PROPOSED)

ASSUMPTIONS:

Kent/Des Moines SR 99 West Station	
Alternative(s):	SR 99
Boardings	3,000
Boardings (with 216th Station)	2,500
Boardings (interim terminus)	4,500
Station Configuration	
Terminus / In-Line	Interim Terminus
Station Type	Center Platform - Elevated
Platform Width	34'
Tail track	900'
Crossover	Yes
TPSS	Yes
Program	
KC Metro Ancillary Spaces (SF)	200
ST Ancillary Spaces (SF)	1,800
Total Ancillary Spaces (SF)	2,000
Vertical Circulation	
# of entrances	2
# of escalators	2
# of staircases (patron)	2
# of elevators	2
# of emergency stairs	2
Bus/Paratransit Facilities	
Bus pick-up/drop-off (KCM)	2 bays, one 60' coach each
Bus pick-up/drop-off (ST)	1 bay, two 60' coaches
Rapid Ride	On-street at SR 99
Bus layover (KCM)	2 bays, two 60' coaches each
Bus layover (ST)	1 bay, two 60' coaches
Paratransit	1 permanent, 1 interim
Communications Facility	Tier 2
Parking & Amenities	
Bike storage	900 SF
Patron drop-off	6 spaces
Short-term parking	7 to 10 spaces
Staff parking	4 spaces
Service/emerg. vehicle park.	2 spaces, separate lot
Signal bungalow / TPSS park.	2 spaces, dedicated
Long-term patron parking	500 spaces (structure)
Temporary patron parking*	500 spaces (surface)
Total proposed patron parking*	1000 Spaces

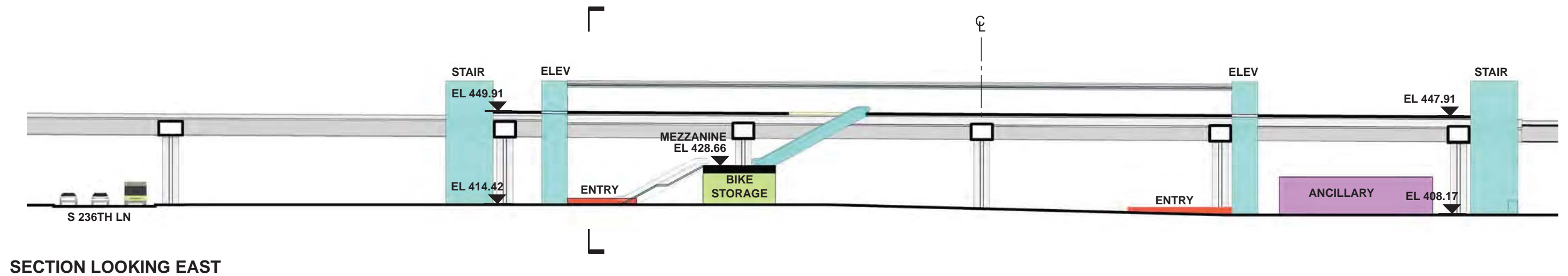
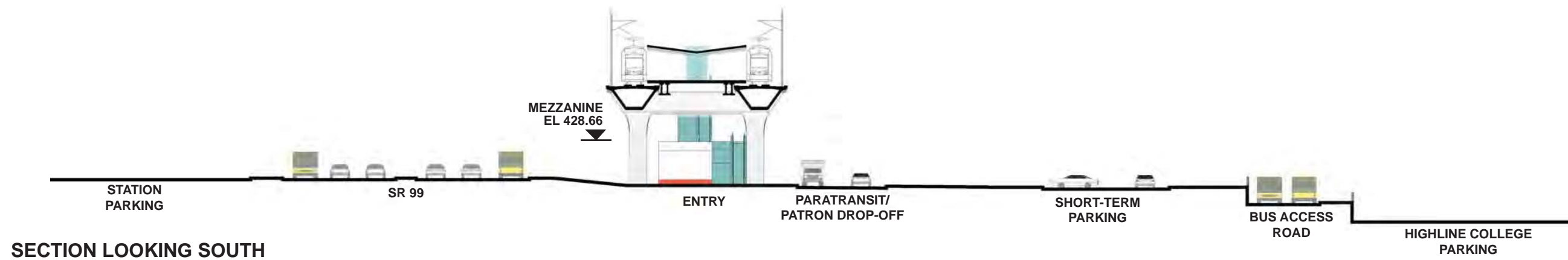
*Only required for interim terminus condition



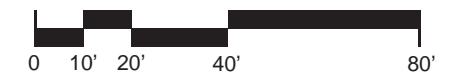
DRAFT EIS - CONCEPTUAL DESIGN
KENT/DES MOINES SR 99 WEST STATION
SITE PLAN

APRIL 2015
FWLE_S99_AP009
20

SOUND TRANSIT FEDERAL WAY LINK EXTENSION



- | | |
|------------------------|--------------------------------|
| STATION PLAZA | BUS LAYOVER |
| VERTICAL CIRCULATION | BUS PICK-UP / DROP OFF |
| TICKETING / ENTRY HALL | PARATRANSIT |
| PLATFORM | BICYCLE STORAGE |
| ANCILLARY SPACES | CONSTRUCTION STAGING / PARKING |
| TPSS | |

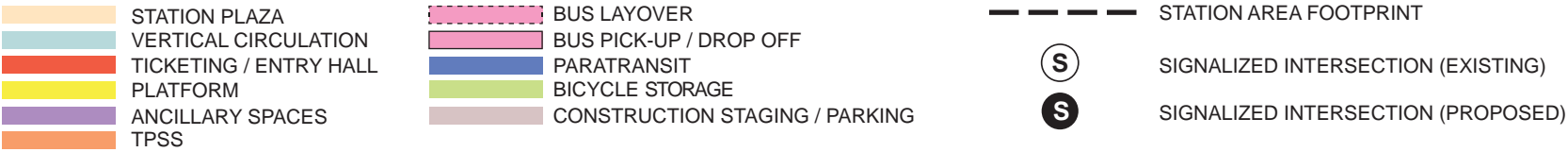


SOUND TRANSIT FEDERAL WAY LINK EXTENSION



ASSUMPTIONS:

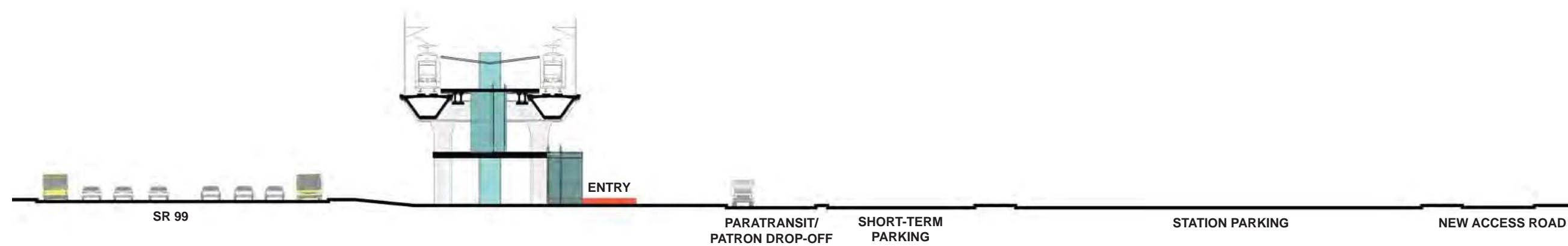
S 272nd Redondo Station	
Alternative(s)	SR 99
Boardings	1,500
Boardings (interim terminus)	3,500
Station Configuration	
Terminus / In-Line	Interim Terminus
Station Type	Center Platform - Elevated
Platform Width	34'
Tail track	900'
Crossover	Yes
TPSS	Yes
Program	
KC Metro Ancillary Spaces (SF)	200
ST Ancillary Spaces (SF)	1,800
Total Ancillary Spaces (SF)	2,000
Vertical Circulation	
# of entrances	2
# of escalators	4
# of staircases (patron)	4
# of elevators	2
# of emergency stairs	2
Bus/ Paratransit Facilities	
Bus bays (KCM)	2 bays, one 60' coach each
Bus bays (ST)	N/A
Rapid Ride	On-street at SR 99
Bus layover (KCM)	2 bays, one 60' coach each
Bus layover (ST)	N/A
Paratransit	1 permanent, 1 interim
Communications Facility	Tier 2
Parking & Amenities	
Bike storage	900 SF
Patron drop-off	6 spaces
Short-term patron parking	7 to 10 spaces
Staff parking	4 spaces
Service/emerg. vehicle park.	2 spaces, separate lot
Signal bungalow / TPSS park.	2 spaces, dedicated
Existing patron parking	700 spaces
Additional patron parking	700 spaces
Total proposed patron parking	1400 spaces (structure)



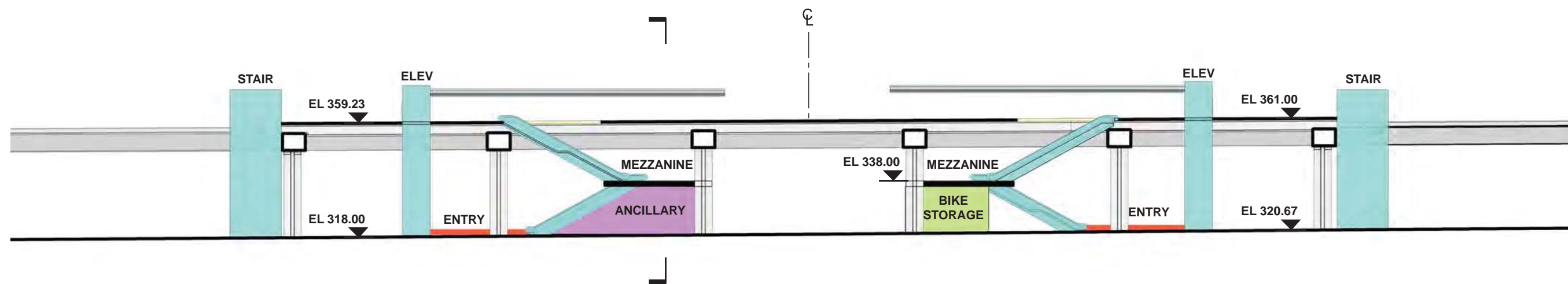
DRAFT EIS - CONCEPTUAL DESIGN
S 272ND REDONDO STATION
SITE PLAN

APRIL 2015
FWLE_S99_AP007
22

SOUND TRANSIT FEDERAL WAY LINK EXTENSION



SECTION LOOKING NORTH



SECTION LOOKING EAST

- STATION PLAZA

VERTICAL CIRCULATION

TICKETING / ENTRY HALL

PLATFORM

ANCILLARY SPACES

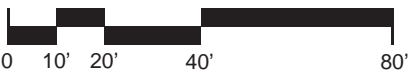
TPSS
- BUS LAYOVER

BUS PICK-UP / DROP OFF

PARATRANSIT

BICYCLE STORAGE

CONSTRUCTION STAGING / PARKING



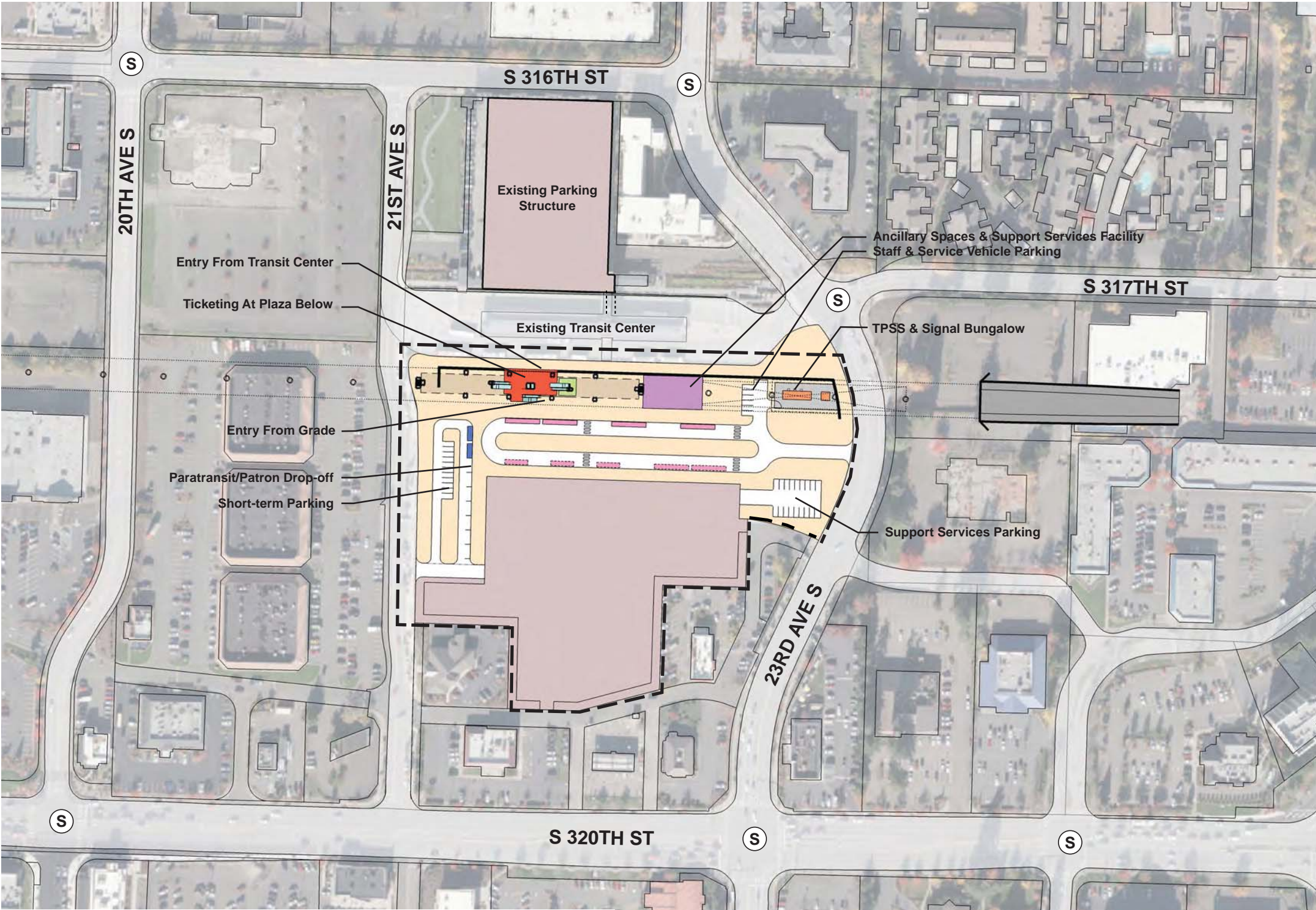
7/17/2014 11:26:52 AM JHAMMERQUIST G:\BWA\PROJECTS\67612\FEDERAL WAY TRANSIT EXTENSION\2 CLIENT\2 DATA\INCOMING HDR\40717 UPDATED TITLEBLOCK.DWG



DRAFT EIS - CONCEPTUAL DESIGN
S 272ND REDONDO STATION
SECTIONS

APRIL 2015
FWLE_S99_AX007
23

SOUND TRANSIT FEDERAL WAY LINK EXTENSION



- STATION PLAZA

VERTICAL CIRCULATION

TICKETING / ENTRY HALL

PLATFORM

ANCILLARY SPACES

TPSS
- BUS LAYOVER

BUS PICK-UP / DROP OFF

PARATRANSIT

BICYCLE STORAGE

CONSTRUCTION STAGING / PARKING
- S

SIGNALIZED INTERSECTION (EXISTING)

S

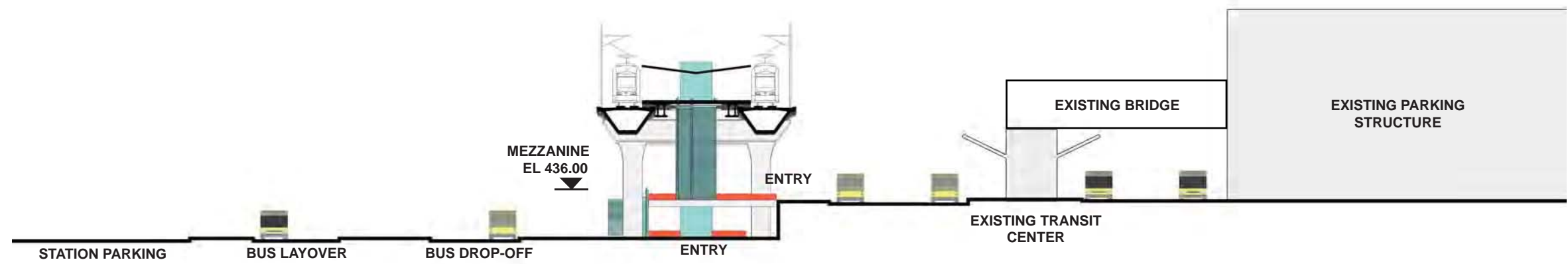
SIGNALIZED INTERSECTION (PROPOSED)

ASSUMPTIONS:

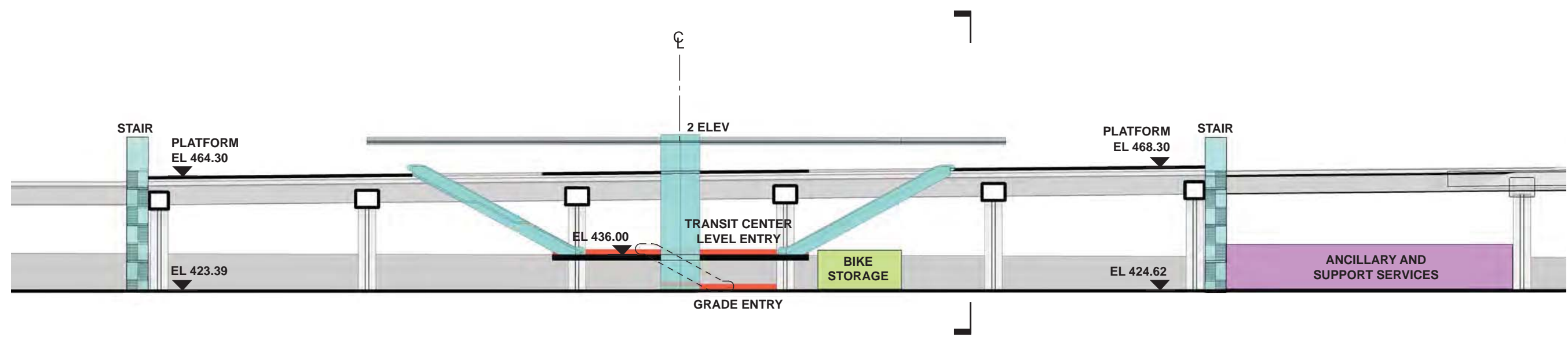
Federal Way Transit Center Station	
Alternative(s)	SR 99; I-5 to SR 99
Boardings	9,000
Station Configuration	
Terminus / In-Line	Terminus
Station Type	Center Platform - Elevated
Platform Width	34'
Tail track	900'
Crossover	Yes
TPSS	Yes
Program	
KC Metro Ancillary Spaces (SF)	200
ST Ancillary Spaces (SF)	1,800
Support Services (SF)	5,000
Total Ancillary Spaces (SF)	7,000
Vertical Circulation	
# of entrances	2
# of escalators	3
# of staircases (patron)	3
# of elevators	2
# of emergency stairs	2
Bus/ Paratransit Facilities	
Bus bays (KCM)	2 bays, one 60' coach each
Bus bays (ST)	1 bay, two 60' coaches
Rapid Ride	Transit Island (Existing)
Bus layover (KCM)	3 bays, one 40' coach each 5 bays, one 60' coach each (relocated from transit ctr.)
Bus layover (ST)	1 bay, two 60' coaches
Paratransit spaces	2 spaces
Communications Facility	Tier 3
Parking & Amenities	
Bike storage	900 SF
Patron drop-off	6 spaces
Short-term patron parking	7 to 10 spaces
Staff parking	4 spaces
Support Services parking	15 spaces
Service/emerg. vehicle park.	2 spaces, separate lot
Signal bungalow / TPSS park.	2 spaces, dedicated
Existing patron parking	1,190 spaces
Additional patron parking	400 spaces
Total proposed patron parking	1590 spaces (structure)



SOUND TRANSIT FEDERAL WAY LINK EXTENSION

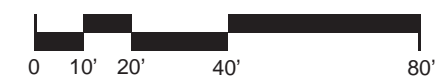


SECTION LOOKING WEST



SECTION LOOKING NORTH

- | | |
|------------------------|--------------------------------|
| STATION PLAZA | BUS LAYOVER |
| VERTICAL CIRCULATION | BUS PICK-UP / DROP OFF |
| TICKETING / ENTRY HALL | PARATRANSIT |
| PLATFORM | BICYCLE STORAGE |
| ANCILLARY SPACES | CONSTRUCTION STAGING / PARKING |
| TPSS | |



7/17/2014 11:36:52 AM JHAMMERQUIST G:\BWA PROJECTS\67612 FEDERAL WAY TRANSIT EXTENSION\2 CLIENT\2 DATA\INCOMING HDR\40717 UPDATED TITLEBLOCK.DWG



DRAFT EIS - CONCEPTUAL DESIGN
FEDERAL WAY TRANSIT CENTER STATION
SECTIONS

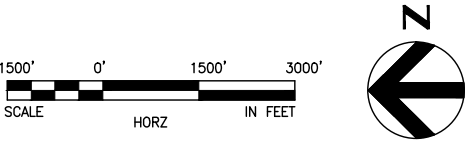
APRIL 2015
FWLE_S99_AX003
25

SOUND TRANSIT FEDERAL WAY LINK EXTENSION



SR99 SHEET LAYOUT MATRIX																
	1	2	3	4	5	6	7	8	9	10	11	12	13	14	15	16
A - SR 99 ALTERNATIVE	X	X	X	X	X	X	X	X	X	X	X	X	X	X	X	X
B - S 216TH WEST STATION OPTION (POTENTIAL ADDITIONAL STATION)	X	X	X													
C - S 216TH EAST STATION OPTION (POTENTIAL ADDITIONAL STATION)		X	X													
D - KENT/DES MOINES SR 99 MEDIAN STATION OPTION				X	X	X										
E - KENT/DES MOINES SR 99 EAST STATION OPTION				X	X	X	X									
F - KENT/DES MOINES HC CAMPUS STATION OPTION			X	X	X	X	X									
F - KDM HC CAMPUS OPTION FROM S 216TH WEST STATION OPTION						X	X	X	X	X						
G - S 260TH WEST STATION OPTION (POTENTIAL ADDITIONAL STATION)					X	X	X	X	X							
H - S 260TH EAST STATION OPTION (POTENTIAL ADDITIONAL STATION)							X	X	X	X						
J - S 272ND REDONDO TRENCH STATION OPTION								X	X	X	X	X	X	X		
K - FEDERAL WAY SR 99 STATION OPTION															X	X

I - NOT USED



2/25/2015 9:20:34 AM
C:\P\WORKING\SEAD114117SR99-A00-GX02.DWG
CFOX

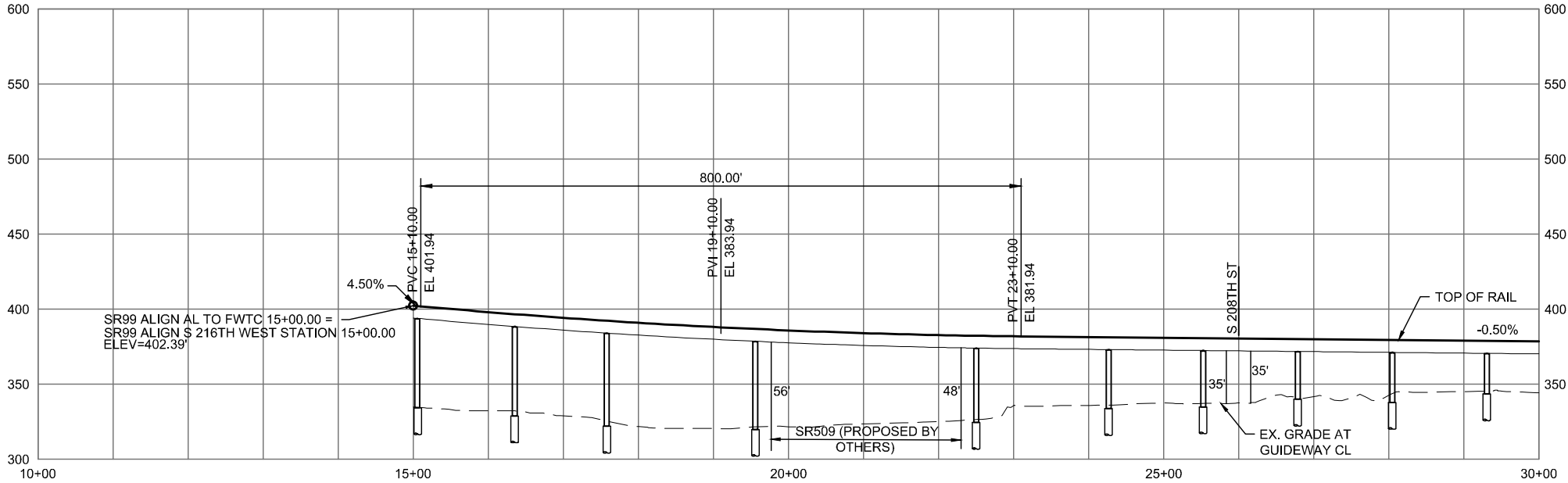
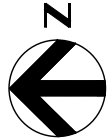
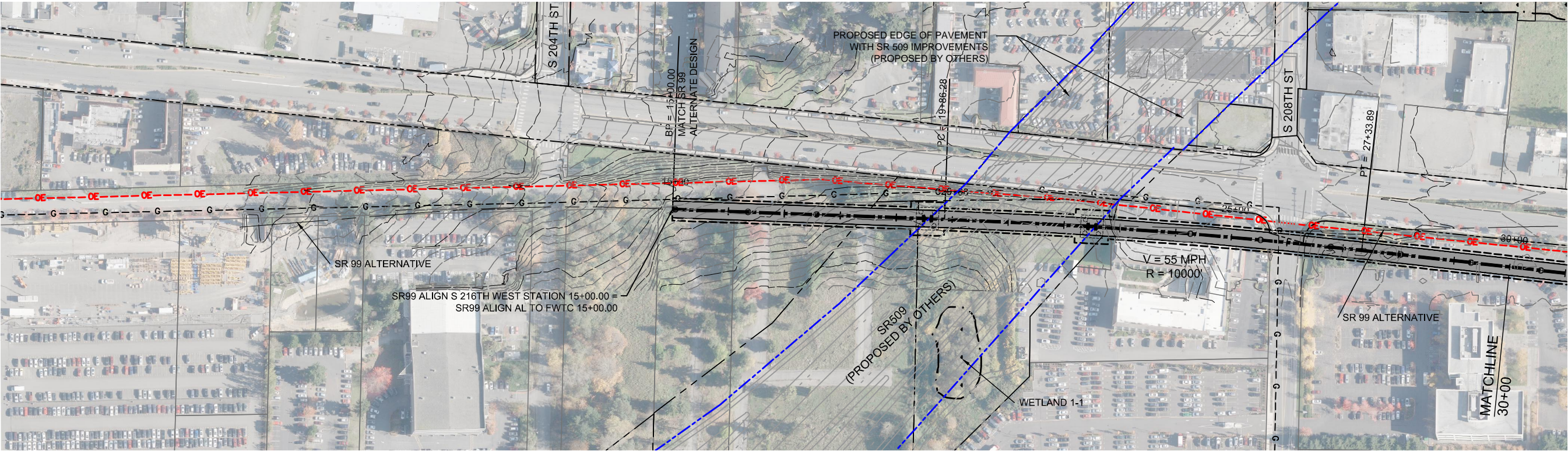


DRAFT EIS - CONCEPTUAL DESIGN
S 216TH WEST STATION OPTION (POTENTIAL ADDITIONAL STATION)
SHEET INDEX KEYMAP

APRIL 2015

SR99-B00-GX02
26

SOUND TRANSIT FEDERAL WAY LINK EXTENSION



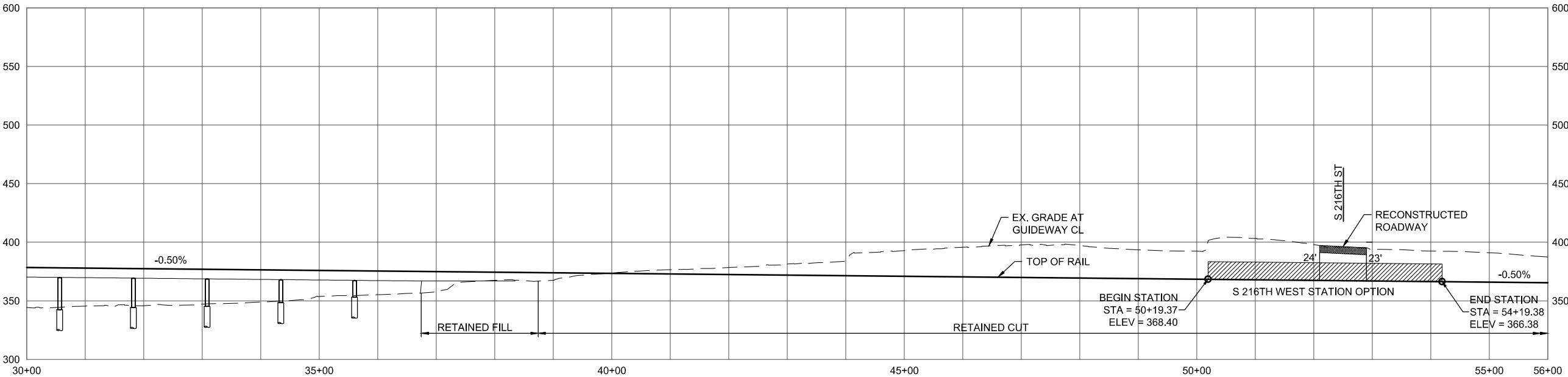
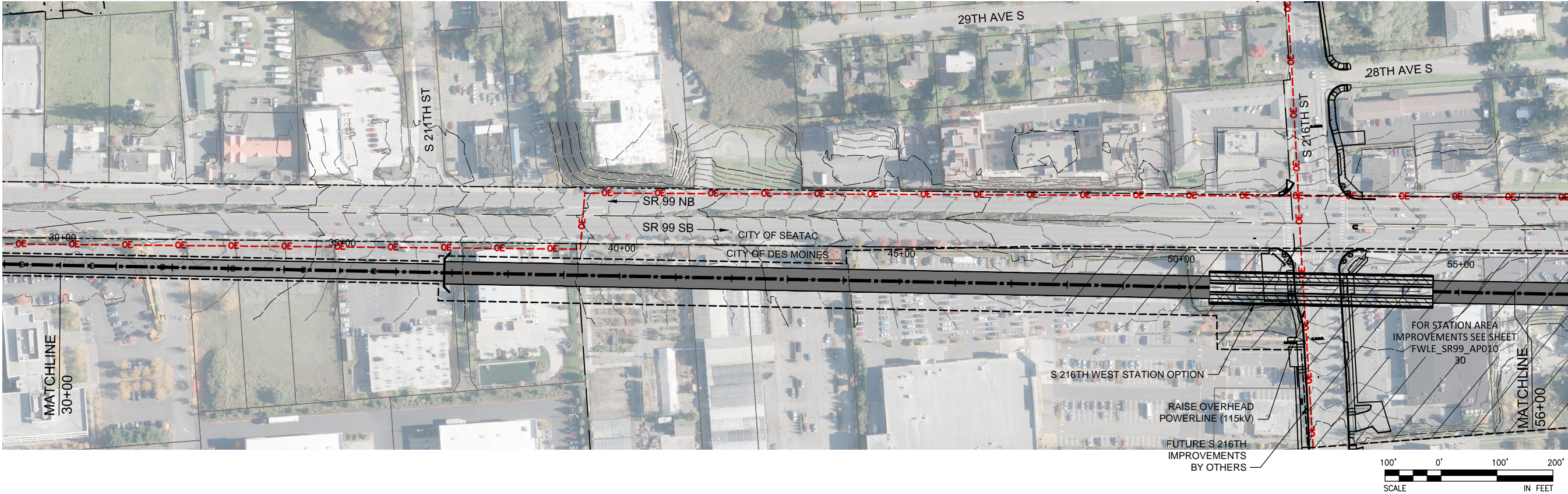
DRAFT EIS - CONCEPTUAL DESIGN

TRACK PLAN & PROFILE AND ROADWAY RECONSTRUCTION
S 216TH WEST STATION OPTION (POTENTIAL ADDITIONAL STATION)
STA 15+00 TO STA 30+00

APRIL 2015

SR99-B1-PP01
27

SOUND TRANSIT FEDERAL WAY LINK EXTENSION



2/27/2015 10:55:14 AM C:\P\WORKING\SEAD1114119B_S216TH_WEST_STATION.DWG



DRAFT EIS - CONCEPTUAL DESIGN

TRACK PLAN & PROFILE ROADWAY RECONSTRUCTION

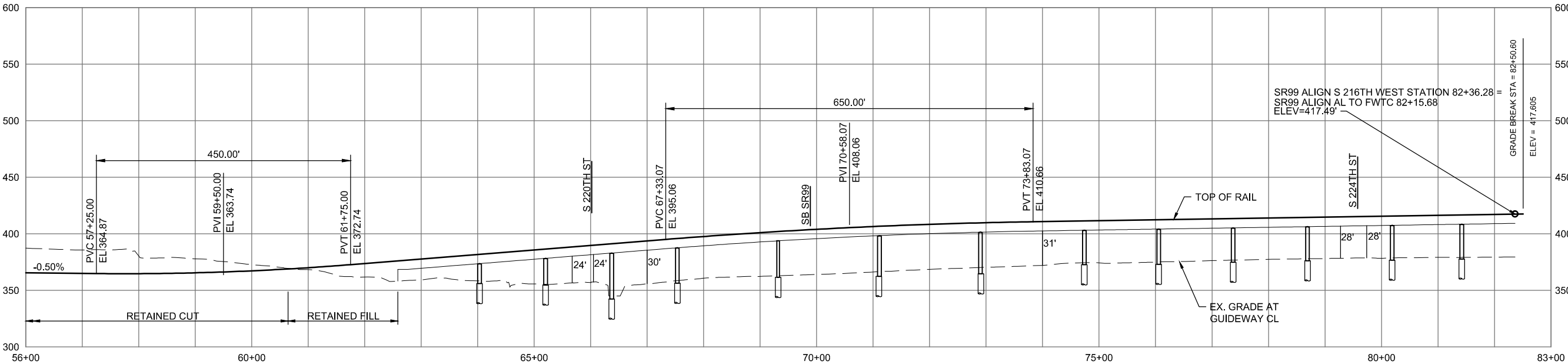
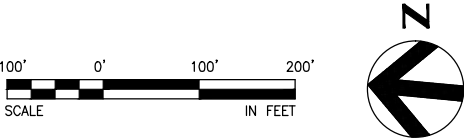
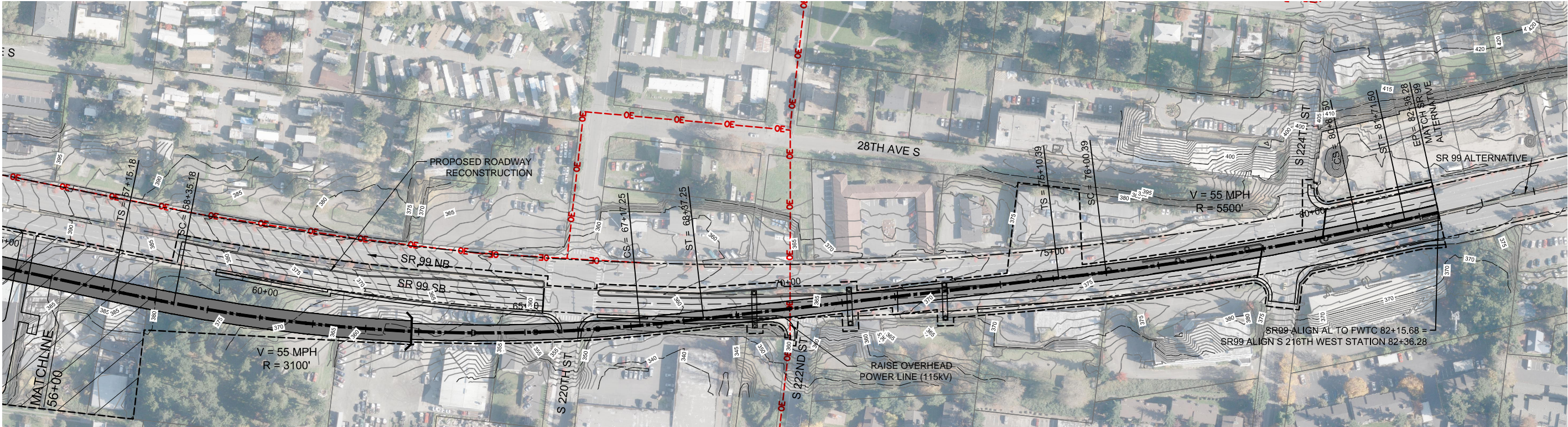
S 216TH WEST STATION OPTION (POTENTIAL ADDITIONAL STATION)

STA 30+00 TO STA 56+00

APRIL 2015

SR99-B2-PP02
28

SOUND TRANSIT FEDERAL WAY LINK EXTENSION



2/27/2015 11:52:31 AM C:\WORKING\SEAD1114119B_S216TH_WEST_STATION.DWG C:\P\

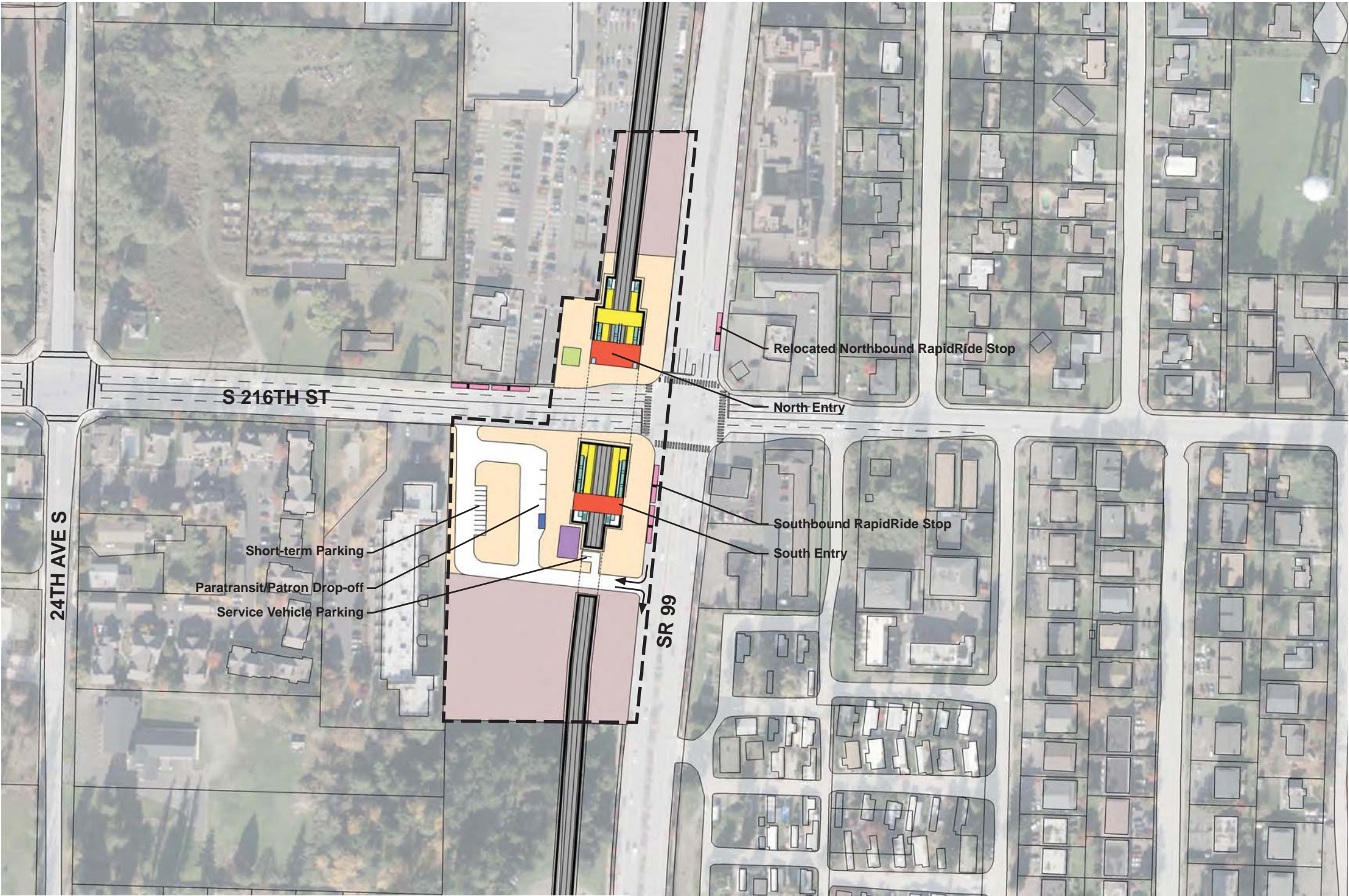


DRAFT EIS - CONCEPTUAL DESIGN
TRACK PLAN & PROFILE AND ROADWAY RECONSTRUCTION
S 216TH WEST STATION OPTION (POTENTIAL ADDITIONAL STATION)
STA 56+00 TO STA 83+36.28

APRIL 2015

SR99-B3-PP03
29

SOUND TRANSIT FEDERAL WAY LINK EXTENSION



- STATION PLAZA
VERTICAL CIRCULATION
TICKETING / ENTRY HALL
PLATFORM
ANCILLARY SPACES
TPSS
- BUS LAYOVER
BUS PICK-UP / DROP OFF
PARATRANSIT
BICYCLE STORAGE
CONSTRUCTION STAGING

-
- STATION AREA FOOTPRINT
S
S
SIGNALIZED INTERSECTION (EXISTING)
SIGNALIZED INTERSECTION (PROPOSED)

ASSUMPTIONS:

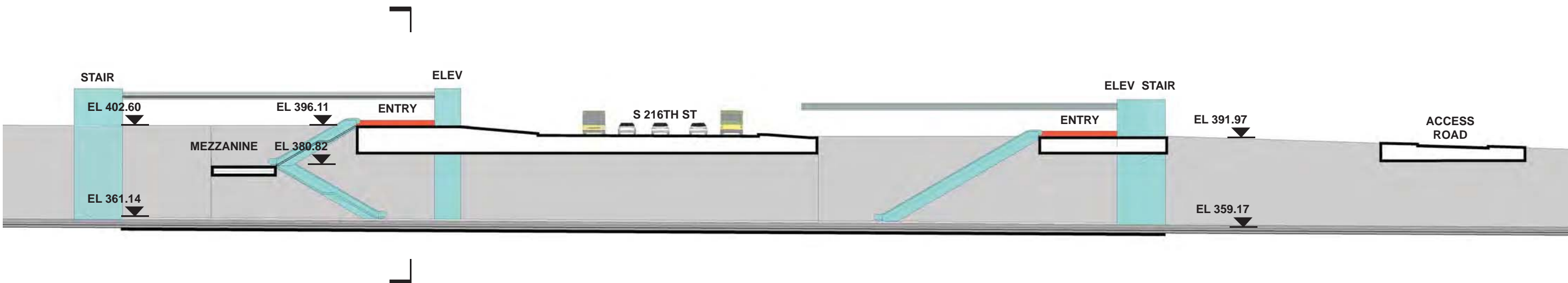
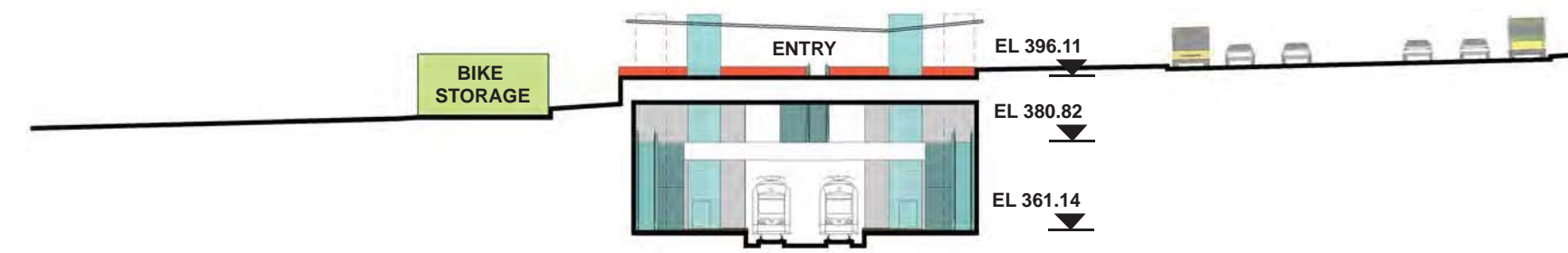
S 216th West Station Option	
Alternative(s)	SR 99; SR 99 to I-5
Boardings	1,000
Station Configuration	
Terminus / In-Line	In-Line
Station Type	Side Platform - Trench
Platform Width	14'
Tail track	N/A
Crossover	No
TPSS	No
Program	
KC Metro Ancillary Spaces (SF)	N/A
ST Ancillary Spaces (SF)	1,200
Total Ancillary Spaces (SF)	1,200
Vertical Circulation	
# of entrances	2
# of escalators	5
# of staircases (patron)	5
# of elevators	4
# of emergency stairs	4
Bus/ Paratransit Facilities	
Bus bays (KCM)	1 bay southbound at SR 99, two 60' coaches; 1 bay westbound at S 216th, two 60' coaches
Bus bays (ST)	N/A
Rapid Ride	On-street at SR 99
Bus layover (KCM)	N/A
Bus layover (ST)	N/A
Paratransit	1 space
Communications Facility	Tier 2
Parking & Amenities	
Bike storage	900 SF
Patron drop-off	2 spaces
Short-term patron parking	7 to 10 spaces
Staff parking	N/A
Service/emerg. vehicle park.	2 spaces, combined
Signal bungalow / TPSS park.	N/A
Patron parking	N/A



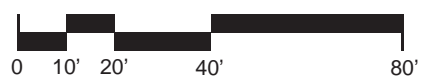
DRAFT EIS - CONCEPTUAL DESIGN
S 216TH WEST STATION OPTION
(POTENTIAL ADDITIONAL STATION)
SITE PLAN



SOUND TRANSIT FEDERAL WAY LINK EXTENSION



- | | | | |
|--|------------------------|--|------------------------|
| | STATION PLAZA | | BUS LAYOVER |
| | VERTICAL CIRCULATION | | BUS PICK-UP / DROP OFF |
| | TICKETING / ENTRY HALL | | PARATRANSIT |
| | PLATFORM | | BICYCLE STORAGE |
| | ANCILLARY SPACES | | CONSTRUCTION STAGING |
| | TPSS | | |



DRAFT EIS - CONCEPTUAL DESIGN
S 216TH WEST STATION OPTION
(POTENTIAL ADDITIONAL STATION)
SECTIONS

APRIL 2015
FWLE_S99_AX010
31

7/17/2014 11:26:52 AM JHAMMERQUIST G:\BWA PROJECTS\67612 FEDERAL WAY TRANSIT EXTENSION\2 CLIENT\2 DATA\INCOMING HDR\40717 UPDATED TITLEBLOCKS\TTLBK.DWG

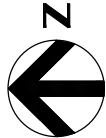


SOUND TRANSIT FEDERAL WAY LINK EXTENSION



SR99 SHEET LAYOUT MATRIX																
	1	2	3	4	5	6	7	8	9	10	11	12	13	14	15	16
A - SR 99 ALTERNATIVE	X	X	X	X	X	X	X	X	X	X	X	X	X	X	X	X
B - S 216TH WEST STATION OPTION (POTENTIAL ADDITIONAL STATION)	X	X	X													
C - S 216TH EAST STATION OPTION (POTENTIAL ADDITIONAL STATION)		X	X													
D - KENT/DES MOINES SR 99 MEDIAN STATION OPTION				X	X	X										
E - KENT/DES MOINES SR 99 EAST STATION OPTION				X	X	X	X									
F - KENT/DES MOINES HC CAMPUS STATION OPTION			X	X	X	X	X									
F - KDM HC CAMPUS OPTION FROM S 216TH WEST STATION OPTION						X	X	X	X	X						
G - S 260TH WEST STATION OPTION (POTENTIAL ADDITIONAL STATION)					X	X	X	X	X							
H - S 260TH EAST STATION OPTION (POTENTIAL ADDITIONAL STATION)							X	X	X	X						
J - S 272ND REDONDO TRENCH STATION OPTION								X	X	X	X	X	X	X		
K - FEDERAL WAY SR 99 STATION OPTION															X	X

I - NOT USED



2/27/2015 11:58:26 AM C:\P\WORKING\SEAD\11417\SR99-AUG-GX02.DWG CFOX

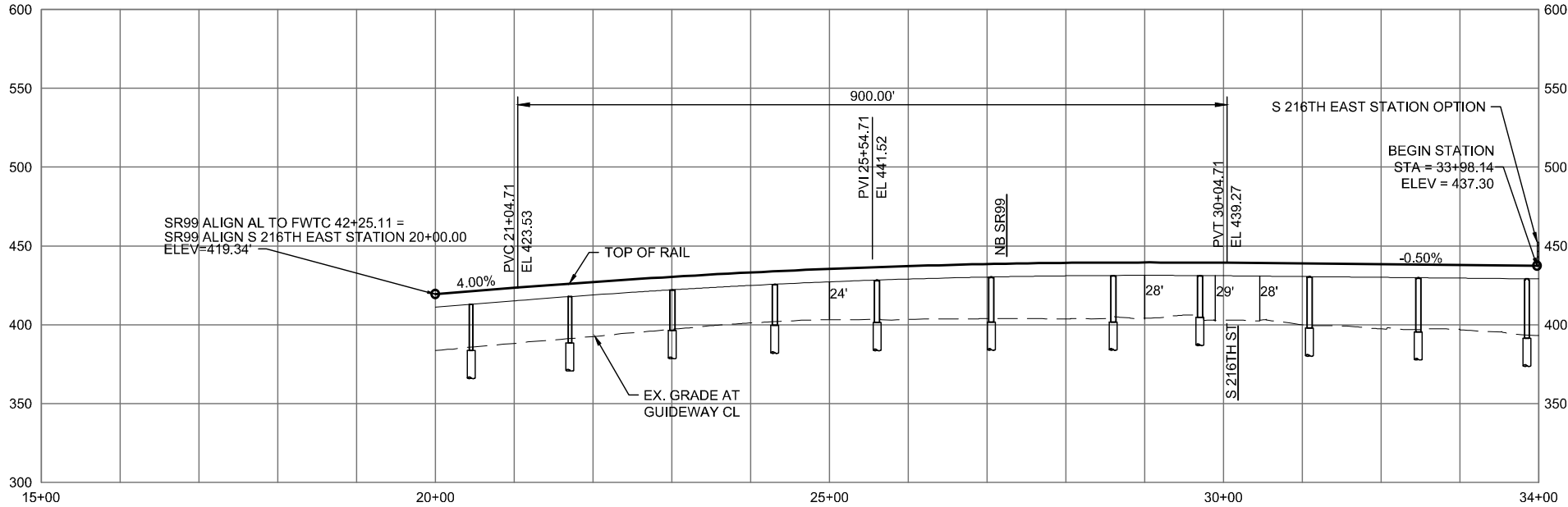
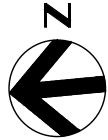
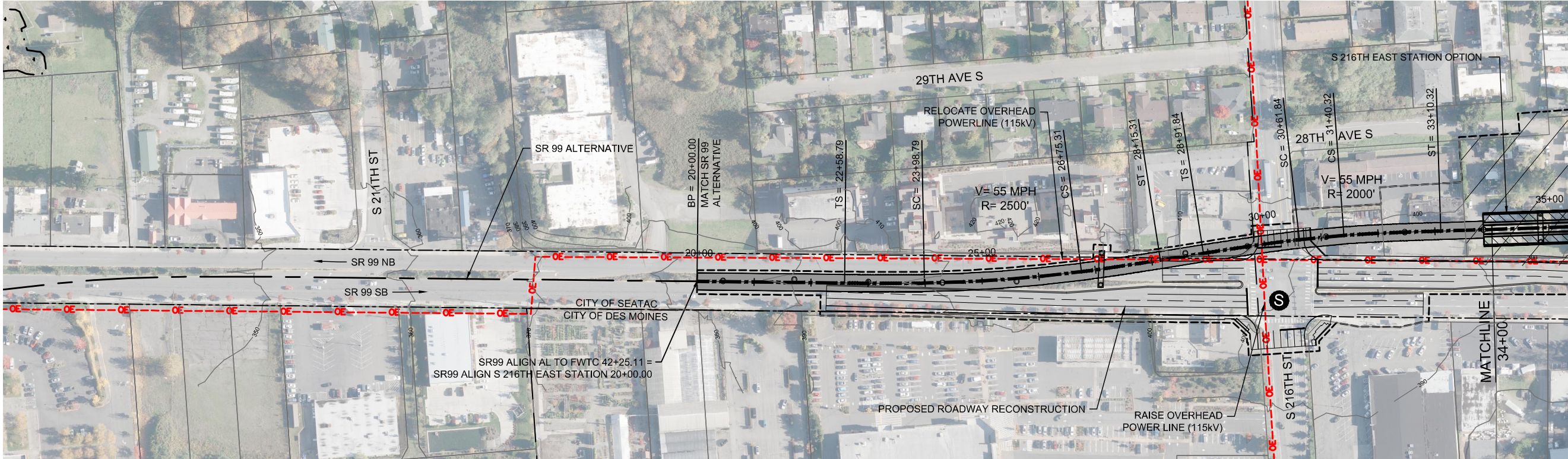


DRAFT EIS - CONCEPTUAL DESIGN
S 216TH EAST STATION OPTION (POTENTIAL ADDITIONAL STATION)
SHEET INDEX KEYMAP

APRIL 2015

SR99-C00-GX02
32

SOUND TRANSIT FEDERAL WAY LINK EXTENSION



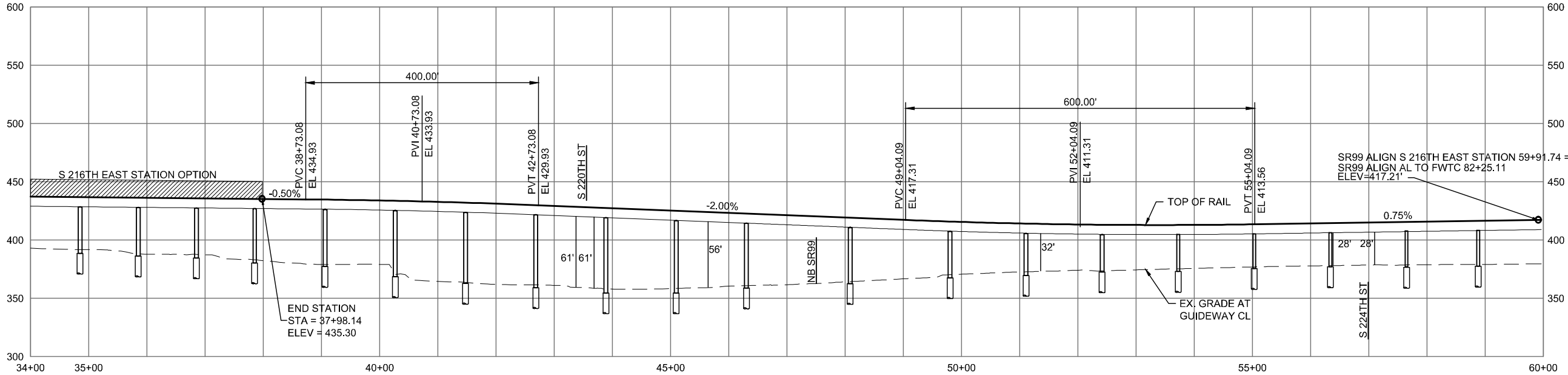
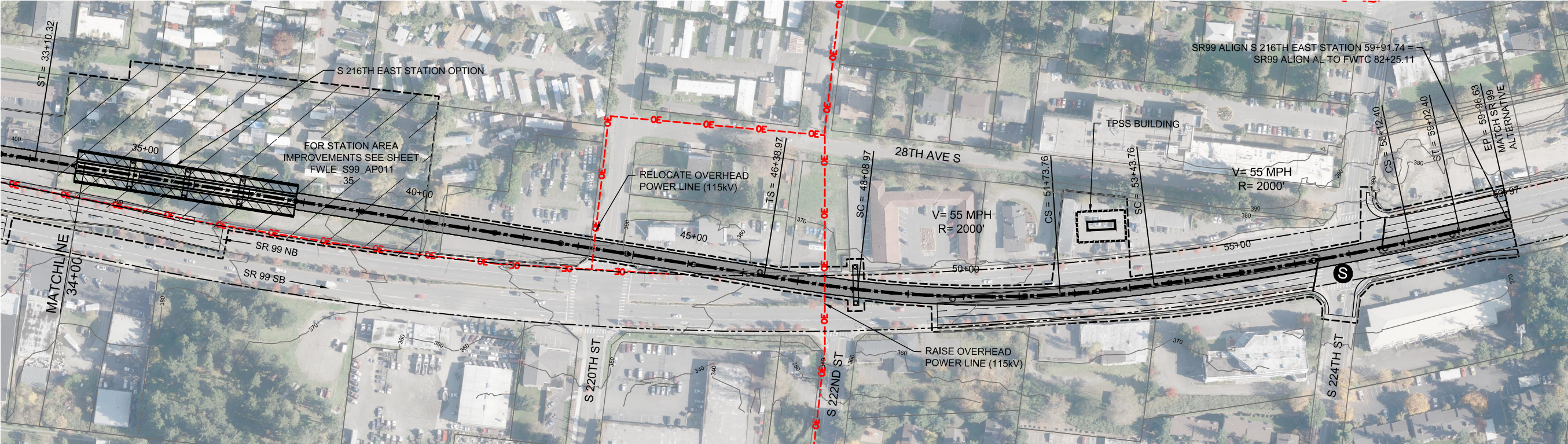
DRAFT EIS - CONCEPTUAL DESIGN
TRACK PLAN & PROFILE AND ROADWAY RECONSTRUCTION
S 216TH EAST STATION OPTION (POTENTIAL ADDITIONAL STATION)
STA 20+00 TO STA 34+00



APRIL 2015

2/27/2015 10:20:04 PM
C:\P\WORKING\SEAD\114119C_S216TH_EAST_STATION.DWG

SOUND TRANSIT FEDERAL WAY LINK EXTENSION



2/27/2015 10:21:15 PM C:\WORKING\SEAD\114119C_S 216TH EAST STATION.DWG C:\FOX

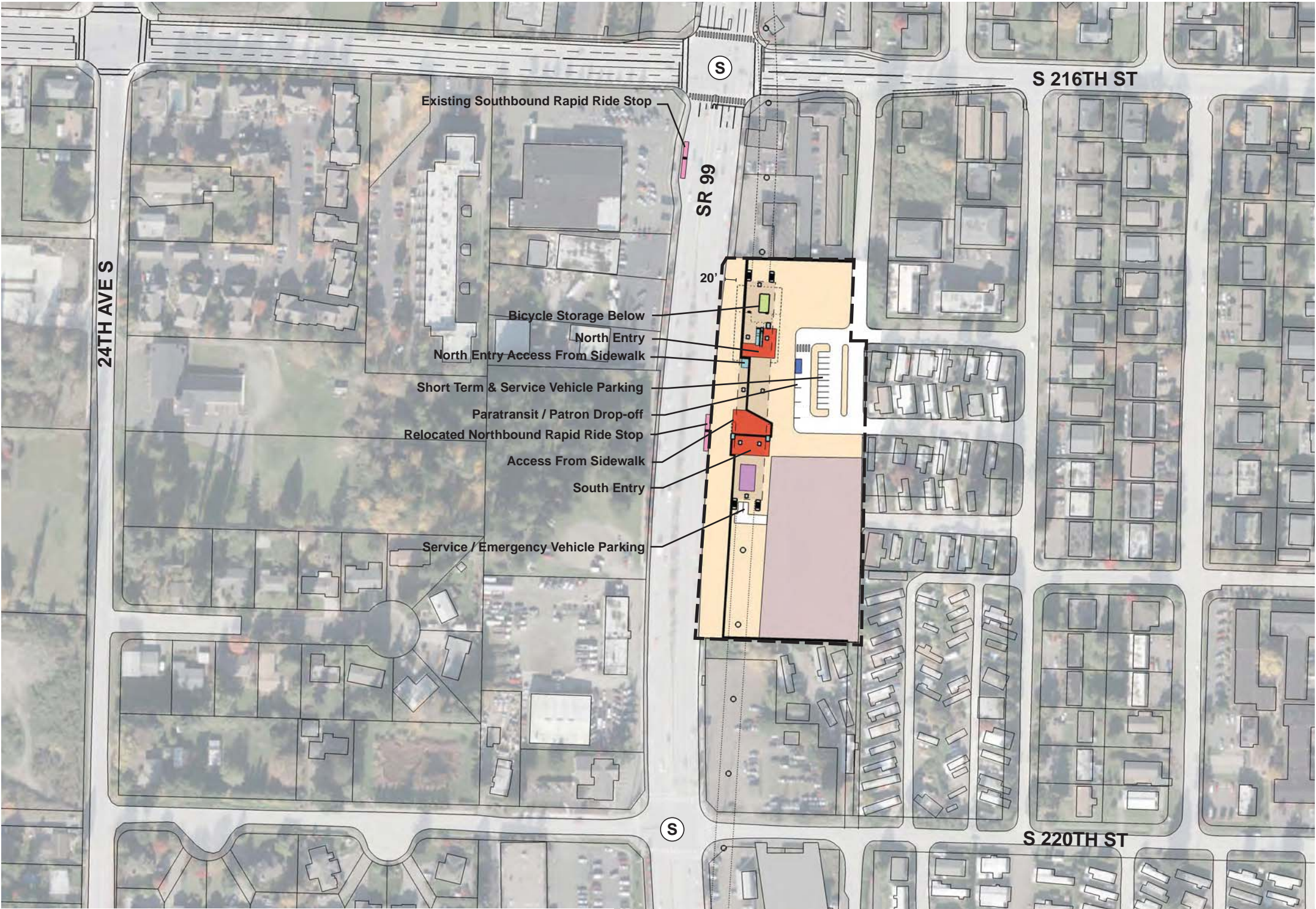


DRAFT EIS - CONCEPTUAL DESIGN
TRACK PLAN & PROFILE AND ROADWAY RECONSTRUCTION
S 216TH EAST STATION OPTION (POTENTIAL ADDITIONAL STATION)
STA 34+00 TO STA 59+91.74

APRIL 2015

SR99-C2-PP03
34

SOUND TRANSIT FEDERAL WAY LINK EXTENSION



- STATION PLAZA

VERTICAL CIRCULATION

TICKETING / ENTRY HALL

PLATFORM

ANCILLARY SPACES

TPSS
- BUS LAYOVER

BUS PICK-UP / DROP OFF

PARATRANSIT

BICYCLE STORAGE

CONSTRUCTION STAGING

- STATION AREA FOOTPRINT

S

SIGNALIZED INTERSECTION (EXISTING)

S

SIGNALIZED INTERSECTION (PROPOSED)

ASSUMPTIONS:

S 216th East Station Option	
Alternative(s)	SR 99; SR 99 to I-5
Boardings	1,000
Station Configuration	
Terminus / In-Line	In-Line
Station Type	Side Platform - Elevated
Platform Width	14'
Tail track	N/A
Crossover	TBD
TPSS	No
Program	
KC Metro Ancillary Spaces (SF)	N/A
ST Ancillary Spaces (SF)	1,200
Total Ancillary Spaces (SF)	1,200
Vertical Circulation	
# of entrances	2
# of escalators	3
# of staircases (patron)	3
# of elevators	5
# of emergency stairs	4
Bus/ Paratransit Facilities	
Bus bays (KCM)	1 bay southbound at SR 99, two 60' coaches; 1 bay westbound at S 216th, two 60' coaches
Bus bays (ST)	N/A
Rapid Ride	On-street at SR 99
Bus layover (KCM)	N/A
Bus layover (ST)	N/A
Paratransit	1 space
Communications Facility	Tier 2
Parking & Amenities	
Bike storage	900 SF
Patron drop-off	2 spaces
Short-term patron parking	7 to 10 spaces
Staff parking	N/A
Service/emerg. vehicle park.	2 spaces, combined
Signal bungalow / TPSS park.	N/A
Patron parking	N/A



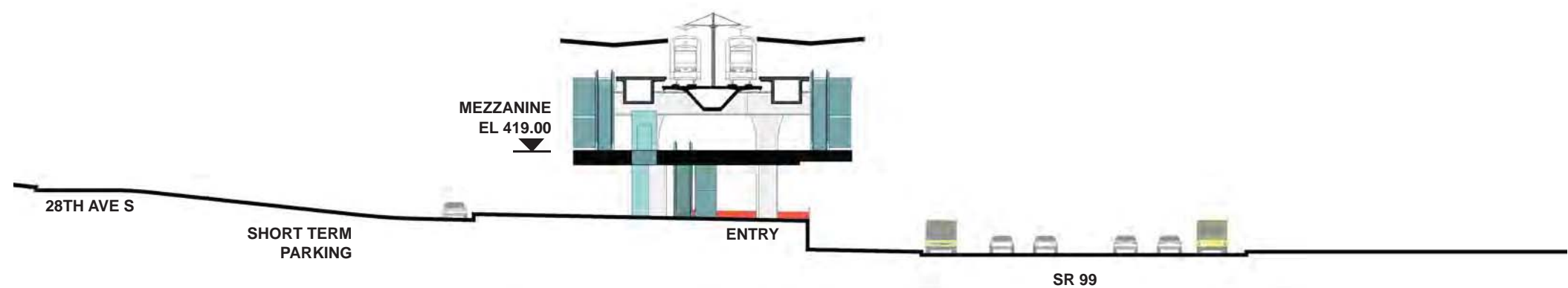
DRAFT EIS - CONCEPTUAL DESIGN
S 216TH EAST STATION OPTION
(POTENTIAL ADDITIONAL STATION)
SITE PLAN



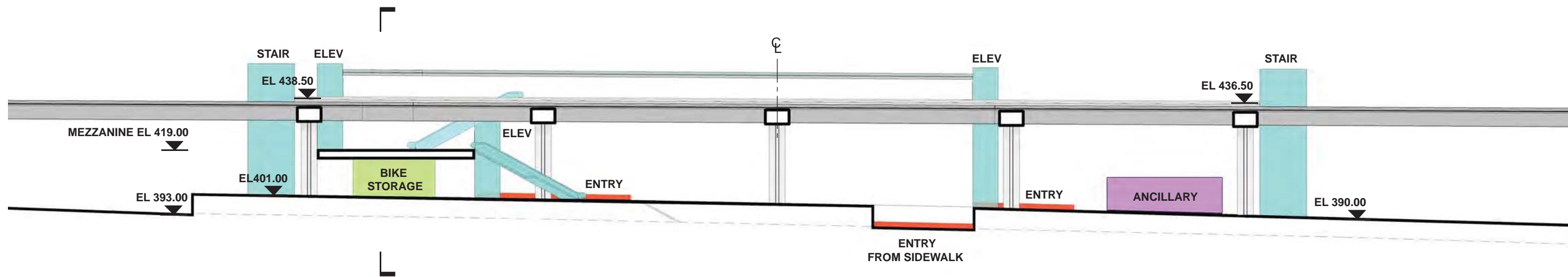
APRIL 2015

FWLE_S99_AP011
35








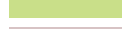



SOUND TRANSIT FEDERAL WAY LINK EXTENSION

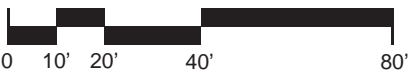


SECTION LOOKING SOUTH



SECTION LOOKING EAST

- | | |
|--|--|
|  STATION PLAZA |  BUS LAYOVER |
|  VERTICAL CIRCULATION |  BUS PICK-UP / DROP OFF |
|  TICKETING / ENTRY HALL |  PARATRANSIT |
|  PLATFORM |  BICYCLE STORAGE |
|  ANCILLARY SPACES |  CONSTRUCTION STAGING |
|  TPSS | |



DRAFT EIS - CONCEPTUAL DESIGN
S 216TH EAST STATION OPTION
(POTENTIAL ADDITIONAL STATION)
SECTION

APRIL 2015

FWLE_S99_AX011
36

7/17/2014 11:29:52 AM JHAMMERQUIST G:\BWA PROJECTS\67612 FEDERAL WAY TRANSIT EXTENSION\2 CLIENT\2 DATA\INCOMING HDR\40717 UPDATED TITLEBLOCKS\TTLB\K.DWG

