

Federal Way Link Extension

Draft Environmental Impact Statement

CONCEPTUAL DESIGN DRAWINGS

Appendix F



Contents

SR 99 Alternative: pp. 1-25

- S 216th West Station Option: pp. 26-31
- S 216th East Station Option: pp. 32-36
- Kent/Des Moines SR 99 Median Station Option: pp. 37-42
- Kent/Des Moines SR 99 East Station Option: pp. 43-49
- Kent/Des Moines HC Campus Station Option: pp. 50-57
- Kent/Des Moines HC Campus Station Option from S 216th West Station Option: pp. 58-63
- S 260th West Station Option: pp. 64-71
- S 260th East Station Option: pp. 72-78
- S 272nd Redondo Trench Station Option: pp. 79-88
- Federal Way SR 99 Station Option: pp. 89-93

I-5 Alternative: pp. 94-118

- Kent/Des Moines At-Grade Station Option: pp. 119-124
- Kent/Des Moines SR 99 East Station Option: pp. 125-130
- Landfill Median Alignment Option: pp.131-134
- Federal Way I-5 Station Option: pp. 135-138
- Federal Way S 320th Park-and-Ride Station Option: pp. 139-143

SR 99 to I-5 Alternative: pp. 144-151

I-5 to SR 99 Alternative: pp. 152-160

- S 260th West Station Option: pp. 161-163

This page intentionally left blank.

DRAFT EIS - CONCEPTUAL DESIGN SR 99 ALTERNATIVE

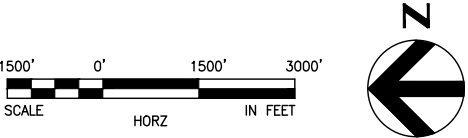
This page intentionally left blank.

SOUND TRANSIT FEDERAL WAY LINK EXTENSION



SR99 SHEET LAYOUT MATRIX																
	1	2	3	4	5	6	7	8	9	10	11	12	13	14	15	16
A - SR 99 ALTERNATIVE	X	X	X	X	X	X	X	X	X	X	X	X	X	X	X	X
B - S 216TH WEST STATION OPTION (POTENTIAL ADDITIONAL STATION)	X	X	X													
C - S 216TH EAST STATION OPTION (POTENTIAL ADDITIONAL STATION)		X	X													
D - KENT/DES MOINES SR 99 MEDIAN STATION OPTION				X	X	X										
E - KENT/DES MOINES SR 99 EAST STATION OPTION				X	X	X	X									
F - KENT/DES MOINES HC CAMPUS STATION OPTION			X	X	X	X	X									
F - KDM HC CAMPUS OPTION FROM S 216TH WEST STATION OPTION						X	X	X	X	X						
G - S 260TH WEST STATION OPTION (POTENTIAL ADDITIONAL STATION)					X	X	X	X	X							
H - S 260TH EAST STATION OPTION (POTENTIAL ADDITIONAL STATION)							X	X	X	X						
J - S 272ND REDONDO TRENCH STATION OPTION								X	X	X	X	X	X	X		
K - FEDERAL WAY SR 99 STATION OPTION															X	X

I - NOT USED

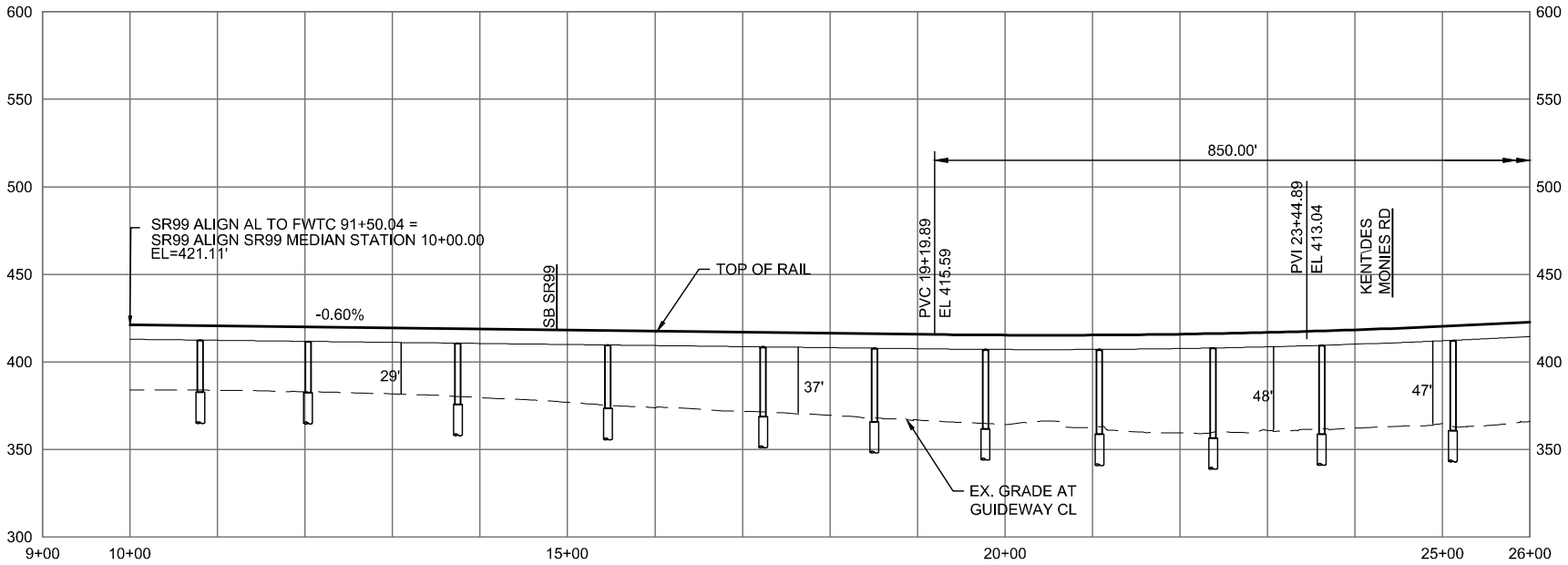
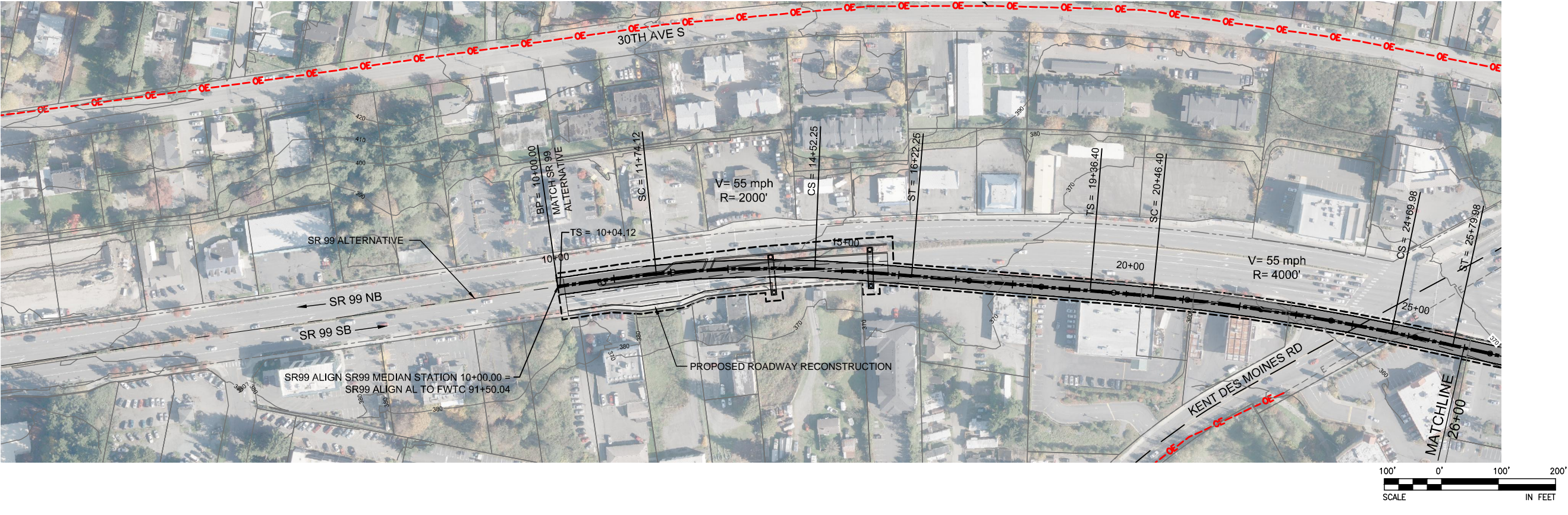


DRAFT EIS - CONCEPTUAL DESIGN
KENT / DES MOINES SR 99 MEDIAN STATION OPTION
SHEET INDEX KEYMAP

APRIL 2015

SR99-D00-GX02
37

SOUND TRANSIT FEDERAL WAY LINK EXTENSION

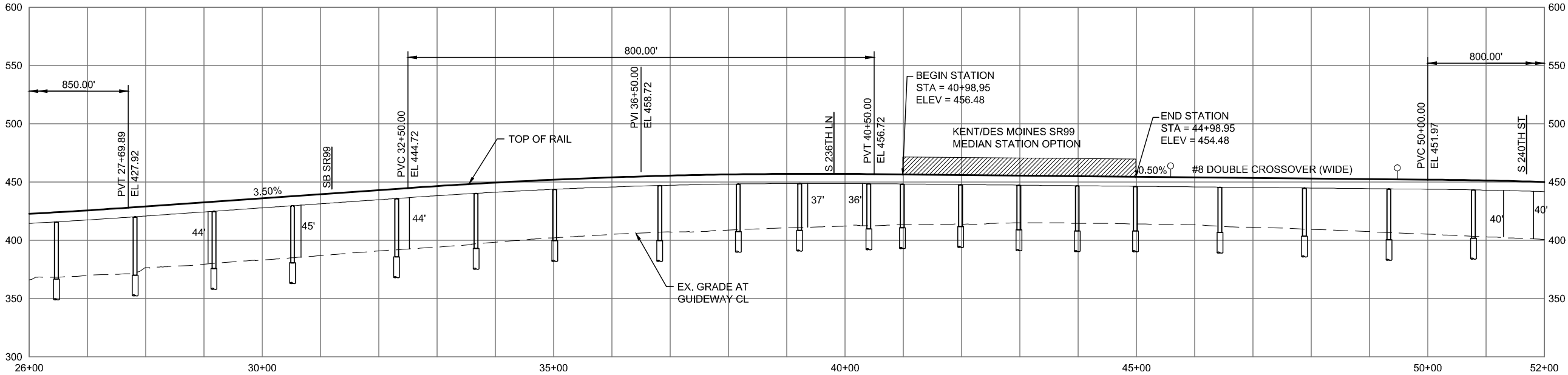
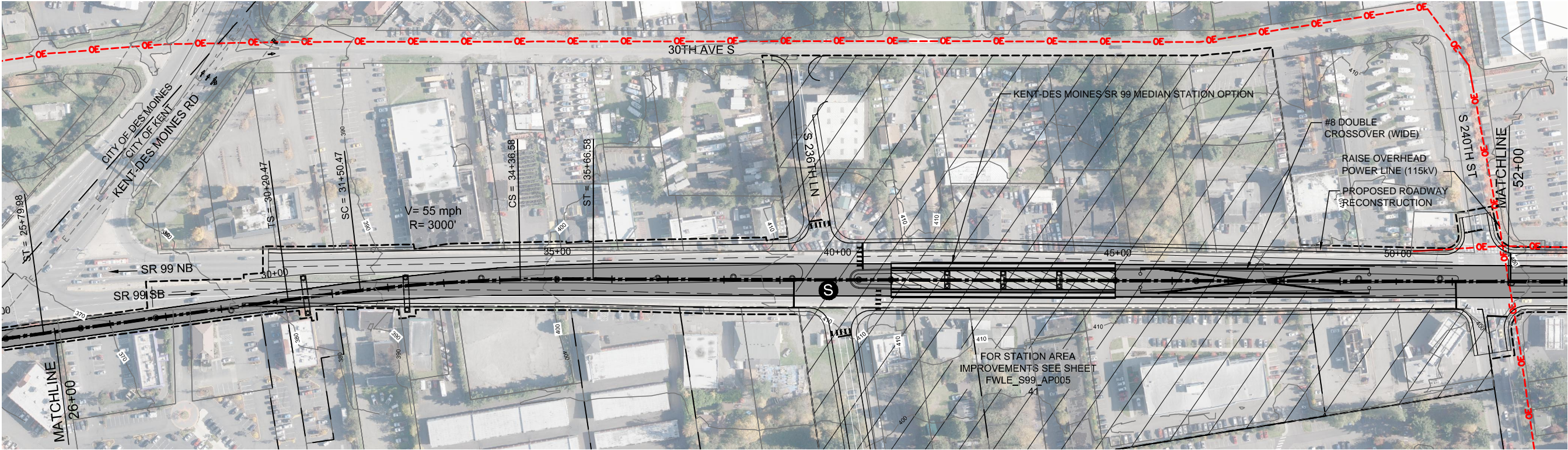


DRAFT EIS - CONCEPTUAL DESIGN
TRACK PLAN AND PROFILE
KENT/DES MOINES SR 99 MEDIAN STATION OPTION
STA 10+00 TO STA 26+00

APRIL 2015

SR99-D1-PP04
38

SOUND TRANSIT FEDERAL WAY LINK EXTENSION



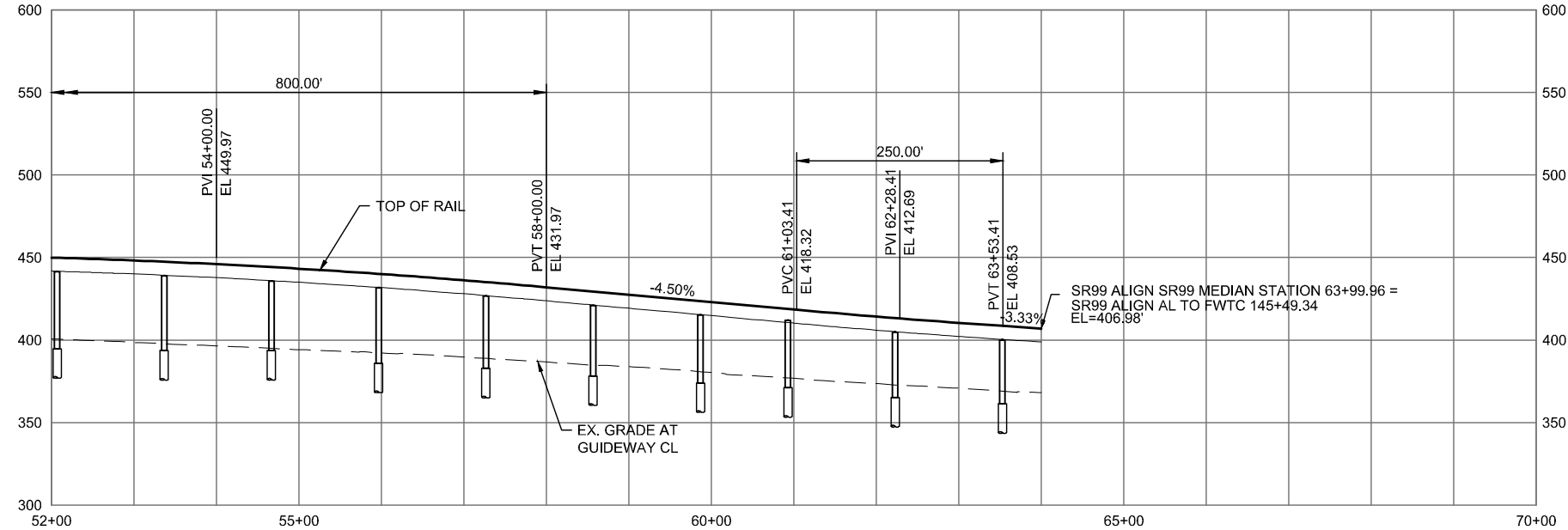
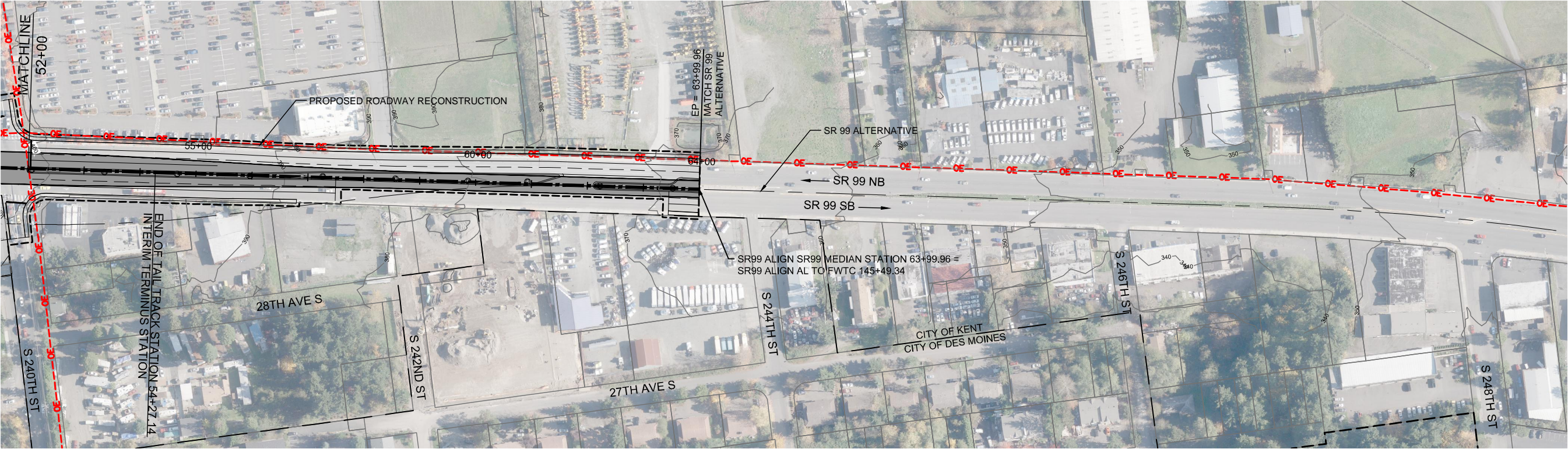
DRAFT EIS - CONCEPTUAL DESIGN
TRACK PLAN AND PROFILE
KENT/DES MOINES SR 99 MEDIAN STATION OPTION
STA 26+00 TO STA 52+00



APRIL 2015

SR99-D2-PP05
39

SOUND TRANSIT FEDERAL WAY LINK EXTENSION



2/25/2015 10:16:22 AM C:\P\WORKING\SEAD\114119D_KENT DES MOINES MEDIAN STATION.DWG C:\O\X



DRAFT EIS - CONCEPTUAL DESIGN
TRACK PLAN AND PROFILE
KENT/DES MOINES SR 99 MEDIAN STATION OPTION
STA 52+00 TO STA 63+99.96

APRIL 2015

SR99-D3-PP06
40

SOUND TRANSIT FEDERAL WAY LINK EXTENSION



ASSUMPTIONS:

Kent/Des Moines SR 99 Median Station Option	
Alternative(s):	SR 99
Boardings	3,000
Boardings (with 216th Station)	2,500
Boardings (interim terminus)	4,500
Station Configuration	
Terminus / In-Line	Interim Terminus
Station Type	Center Platform - Elevated
Platform Width	34'
Tail track	900'
Crossover	Yes
TPSS	Yes
Program	
KC Metro Ancillary Spaces (SF)	200
ST Ancillary Spaces (SF)	1,800
Total Ancillary Spaces (SF)	2,000
Vertical Circulation	
# of entrances	2
# of escalators	4
# of staircases (patron)	4
# of elevators	2
# of emergency stairs	2
Bus/ Paratransit Facilities	
Bus bays (KCM)	2 bays, one 60' coach each
Bus bays (ST)	1 bay, two 60' coaches
Rapid Ride	On-street at SR 99
Bus layover (KCM)	2 bays, two 60' coaches each
Bus layover (ST)	1 bay, two 60' coaches
Paratransit	1 permanent, 1 interim
Communications Facility	Tier 2
Parking & Amenities	
Bike storage	900 SF
Patron drop-off	6 spaces
Short-term parking	7 to 10 spaces
Staff parking	4 spaces
Service/emerg. vehicle park.	2 spaces, separate lot
Signal bungalow / TPSS park.	2 spaces, dedicated
Long-term patron parking	500 spaces (structure)
Temporary patron parking*	500 spaces (surface)
Total proposed patron parking*	1000 Spaces

*Only required for interim terminus condition

- STATION PLAZA

VERTICAL CIRCULATION

TICKETING / ENTRY HALL

PLATFORM

ANCILLARY SPACES

TPSS

BUS LAYOVER

BUS PICK-UP / DROP OFF

PARATRANSIT

BICYCLE STORAGE

CONSTRUCTION STAGING / PARKING

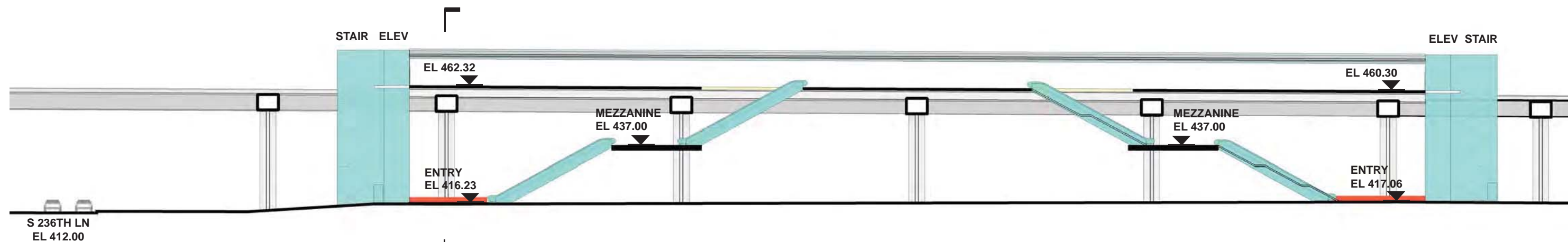
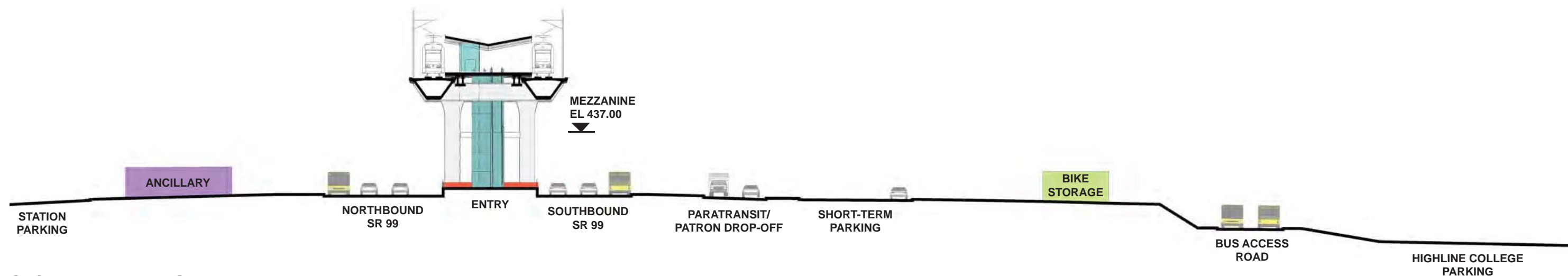
STATION AREA FOOTPRINT

SIGNALIZED INTERSECTION (EXISTING)

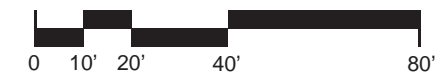
SIGNALIZED INTERSECTION (PROPOSED)



SOUND TRANSIT FEDERAL WAY LINK EXTENSION



- | | |
|------------------------|--------------------------------|
| STATION PLAZA | BUS LAYOVER |
| VERTICAL CIRCULATION | BUS PICK-UP / DROP OFF |
| TICKETING / ENTRY HALL | PARATRANSIT |
| PLATFORM | BICYCLE STORAGE |
| ANCILLARY SPACES | CONSTRUCTION STAGING / PARKING |
| TPSS | |



DRAFT EIS - CONCEPTUAL DESIGN
KENT/DES MOINES SR 99 MEDIAN STATION OPTION
SECTIONS

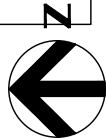
APRIL 2015
FWLE_S99_AX005
42

SOUND TRANSIT FEDERAL WAY LINK EXTENSION



SR99 SHEET LAYOUT MATRIX																
	1	2	3	4	5	6	7	8	9	10	11	12	13	14	15	16
A - SR 99 ALTERNATIVE	X	X	X	X	X	X	X	X	X	X	X	X	X	X	X	X
B - S 216TH WEST STATION OPTION (POTENTIAL ADDITIONAL STATION)	X	X	X													
C - S 216TH EAST STATION OPTION (POTENTIAL ADDITIONAL STATION)		X	X													
D - KENT/DES MOINES SR 99 MEDIAN STATION OPTION				X	X	X										
E - KENT/DES MOINES SR 99 EAST STATION OPTION				X	X	X	X									
F - KENT/DES MOINES HC CAMPUS STATION OPTION			X	X	X	X	X									
F - KDM HC CAMPUS OPTION FROM S 216TH WEST STATION OPTION						X	X	X	X	X						
G - S 260TH WEST STATION OPTION (POTENTIAL ADDITIONAL STATION)					X	X	X	X	X							
H - S 260TH EAST STATION OPTION (POTENTIAL ADDITIONAL STATION)							X	X	X	X						
J - S 272ND REDONDO TRENCH STATION OPTION								X	X	X	X	X	X	X		
K - FEDERAL WAY SR 99 STATION OPTION															X	X

I - NOT USED



2/25/2015 9:20:41 AM
S:\P\WORKING\SEAD\114117SR99-A00-GX02.DWG

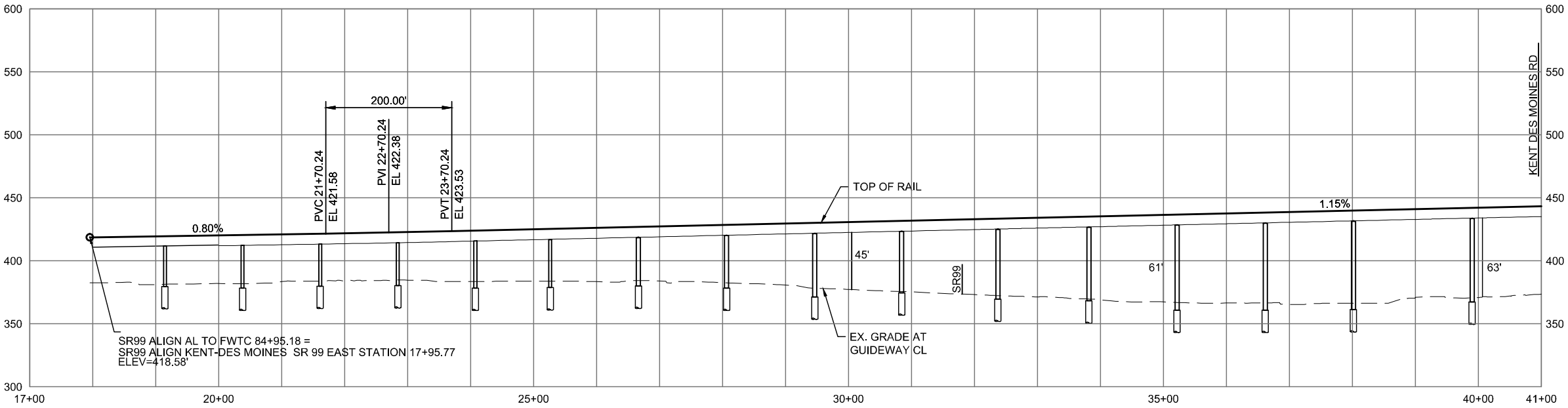
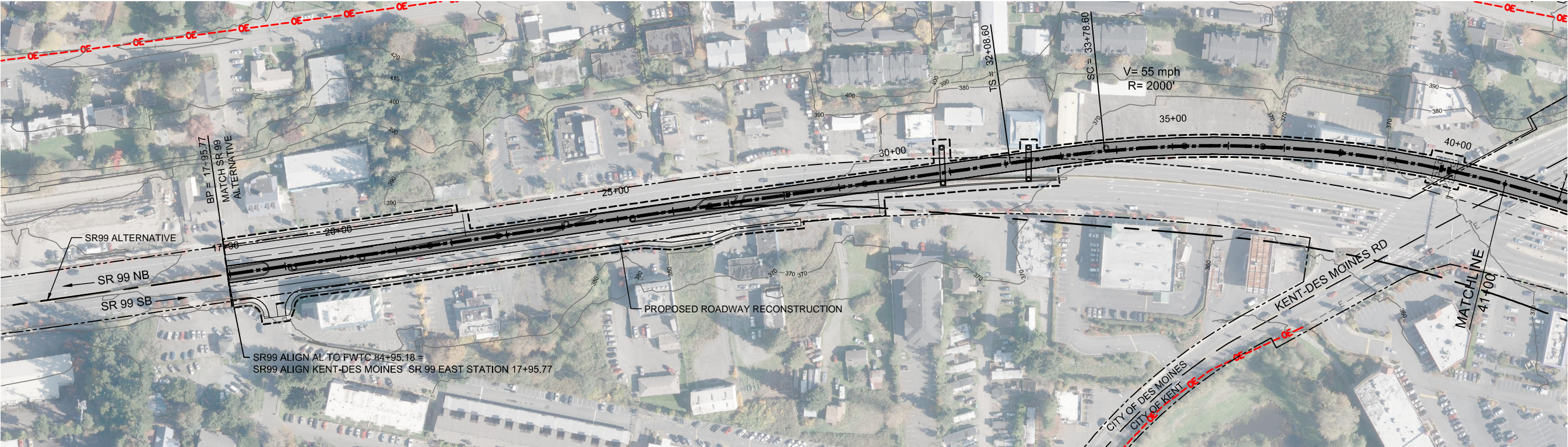


DRAFT EIS - CONCEPTUAL DESIGN
KENT / DES MOINES SR 99 EAST STATION OPTION
SHEET INDEX KEYMAP

APRIL 2015

SR99-E00-GX02
43

SOUND TRANSIT FEDERAL WAY LINK EXTENSION



2/25/2015 1:48:31 PM C:\WORKING\SEAD\114119\ KENT DES MOINES SR 99 EAST STATION.DWG C:\OX

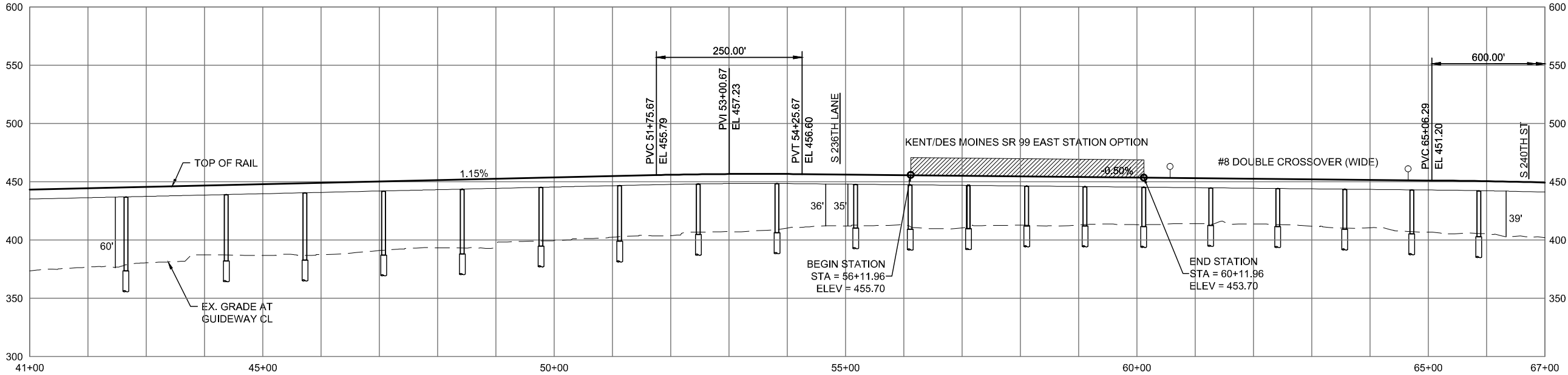
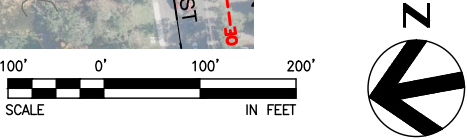
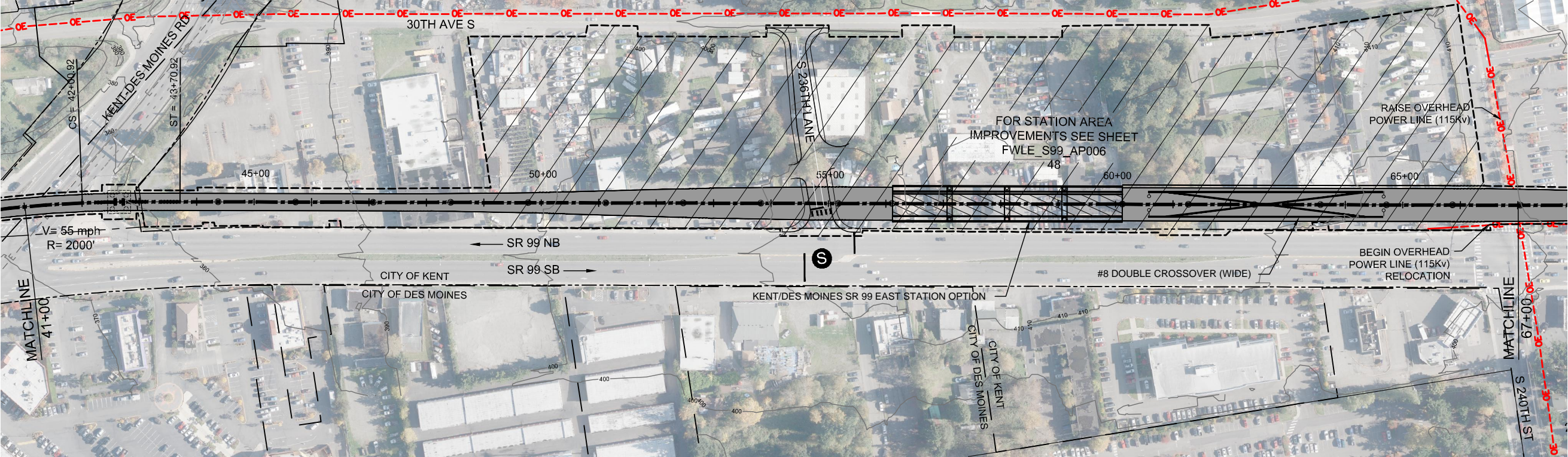


DRAFT EIS - CONCEPTUAL DESIGN
TRACK PLAN & PROFILE AND ROADWAY RECONSTRUCTION
KENT/DES MOINES SR 99 EAST STATION OPTION
STA 17+95.77 TO STA 41+00

APRIL 2015

SR99-E1-PP04
44

SOUND TRANSIT FEDERAL WAY LINK EXTENSION



2/25/2015 1:48:42 PM C:\P\WORKING\SEAD\114119-KENT DES MOINES SR 99 EAST STATION.DWG C:\P\

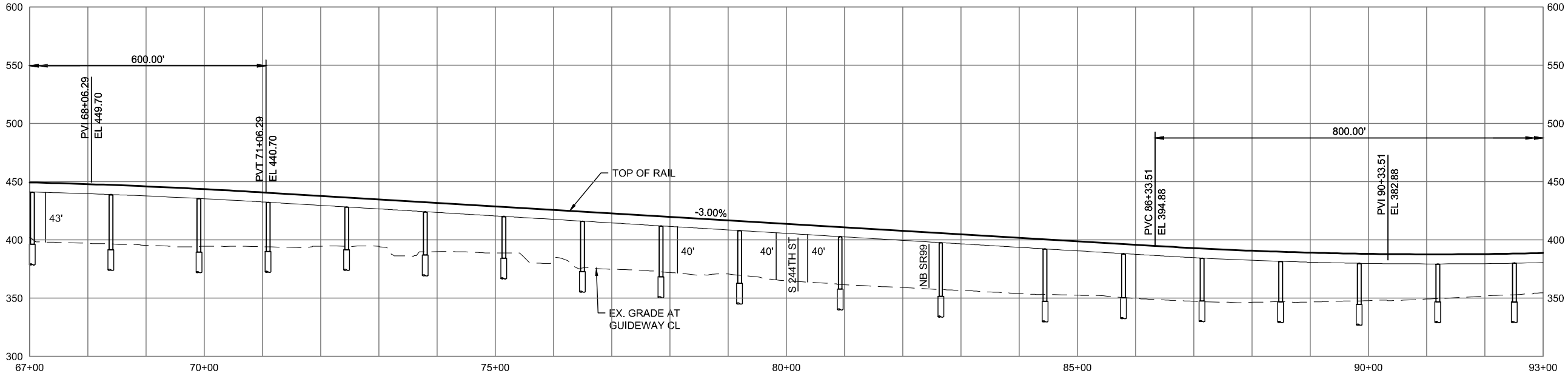
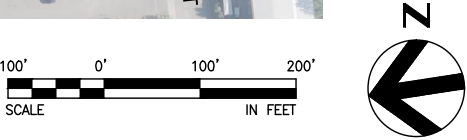
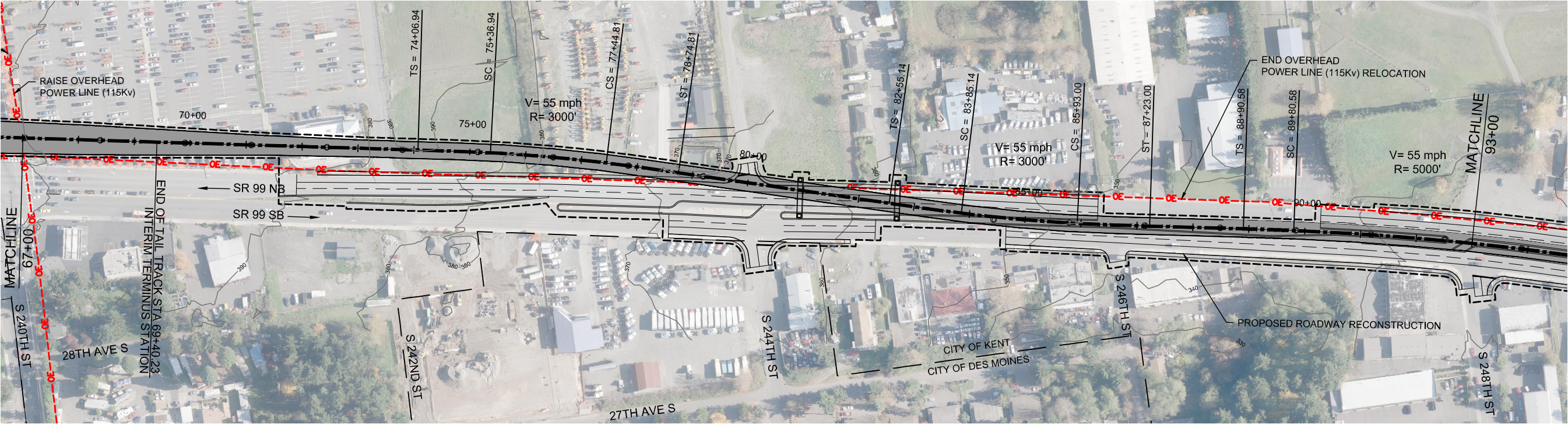


DRAFT EIS - CONCEPTUAL DESIGN
TRACK PLAN & PROFILE AND ROADWAY RECONSTRUCTION
KENT/DES MOINES SR 99 EAST STATION OPTION
STA 41+00 TO STA 67+00

APRIL 2015

SR99-E2-PP05
45

SOUND TRANSIT FEDERAL WAY LINK EXTENSION



2/25/2015 1:48:48 PM C:\WORKING\SEAD\114119\ KENT DES MOINES SR 99 EAST STATION.DWG C:\OX

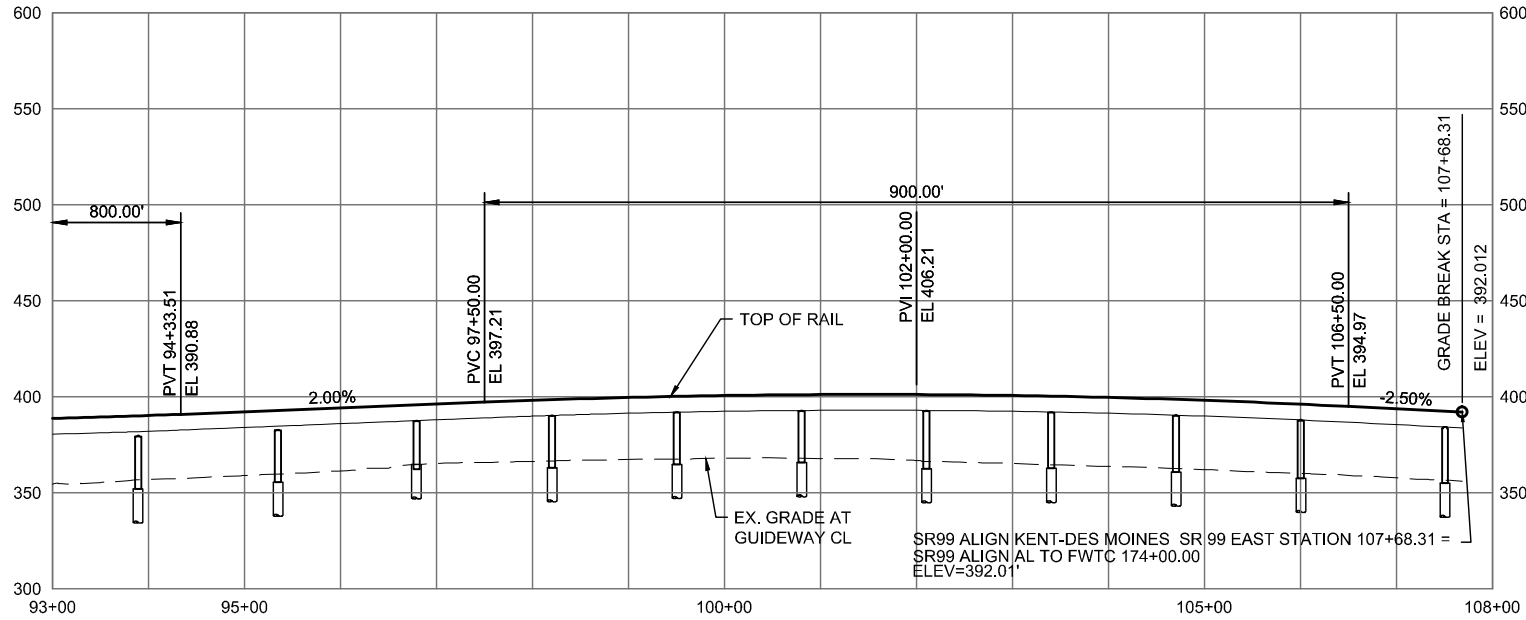
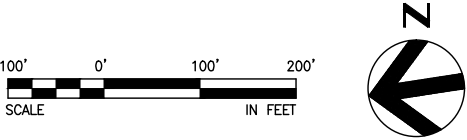
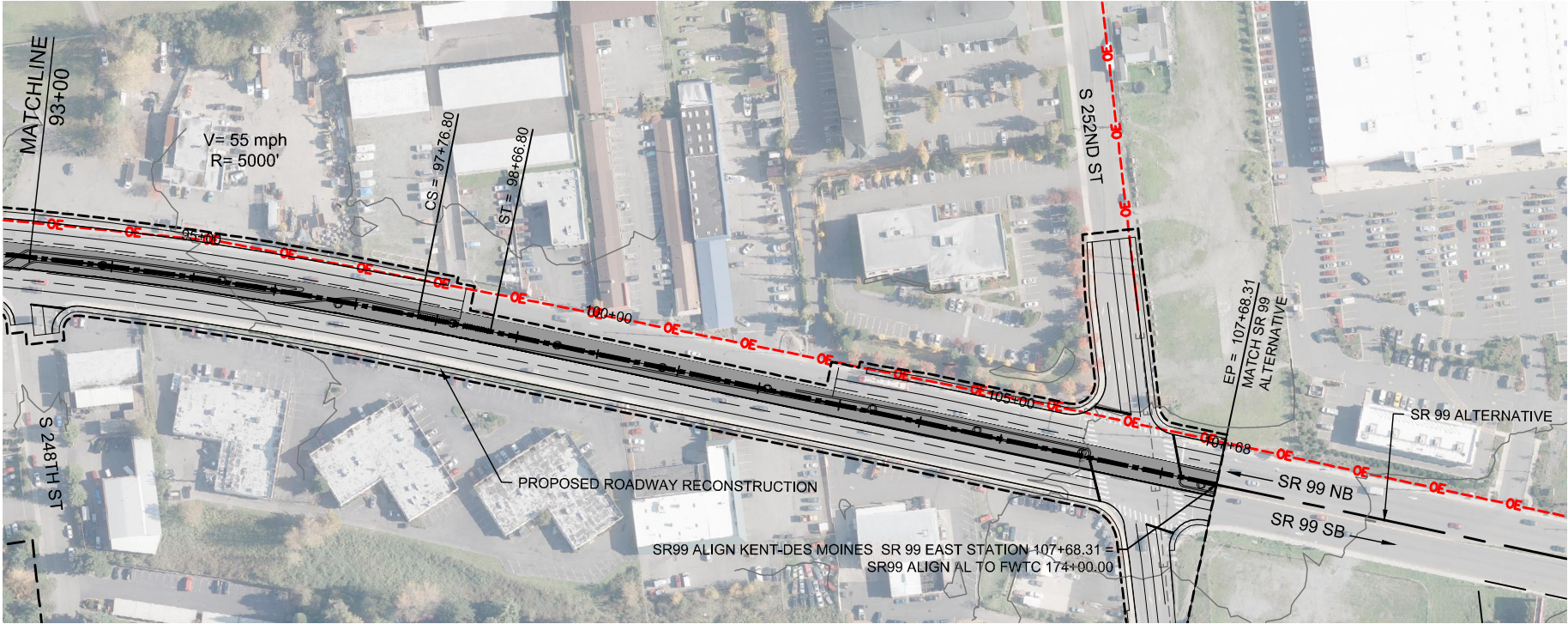


DRAFT EIS - CONCEPTUAL DESIGN
TRACK PLAN & PROFILE AND ROADWAY RECONSTRUCTION
KENT/DES MOINES SR 99 EAST STATION OPTION
STA 67+00 TO STA 93+00

APRIL 2015

SR99-E3-PP06
46

SOUND TRANSIT FEDERAL WAY LINK EXTENSION



2/25/2015 1:48:56 PM C:\P\WORKING\SEAD\114119E_KENT DES MOINES SR 99 EAST STATION.DWG C:\OX

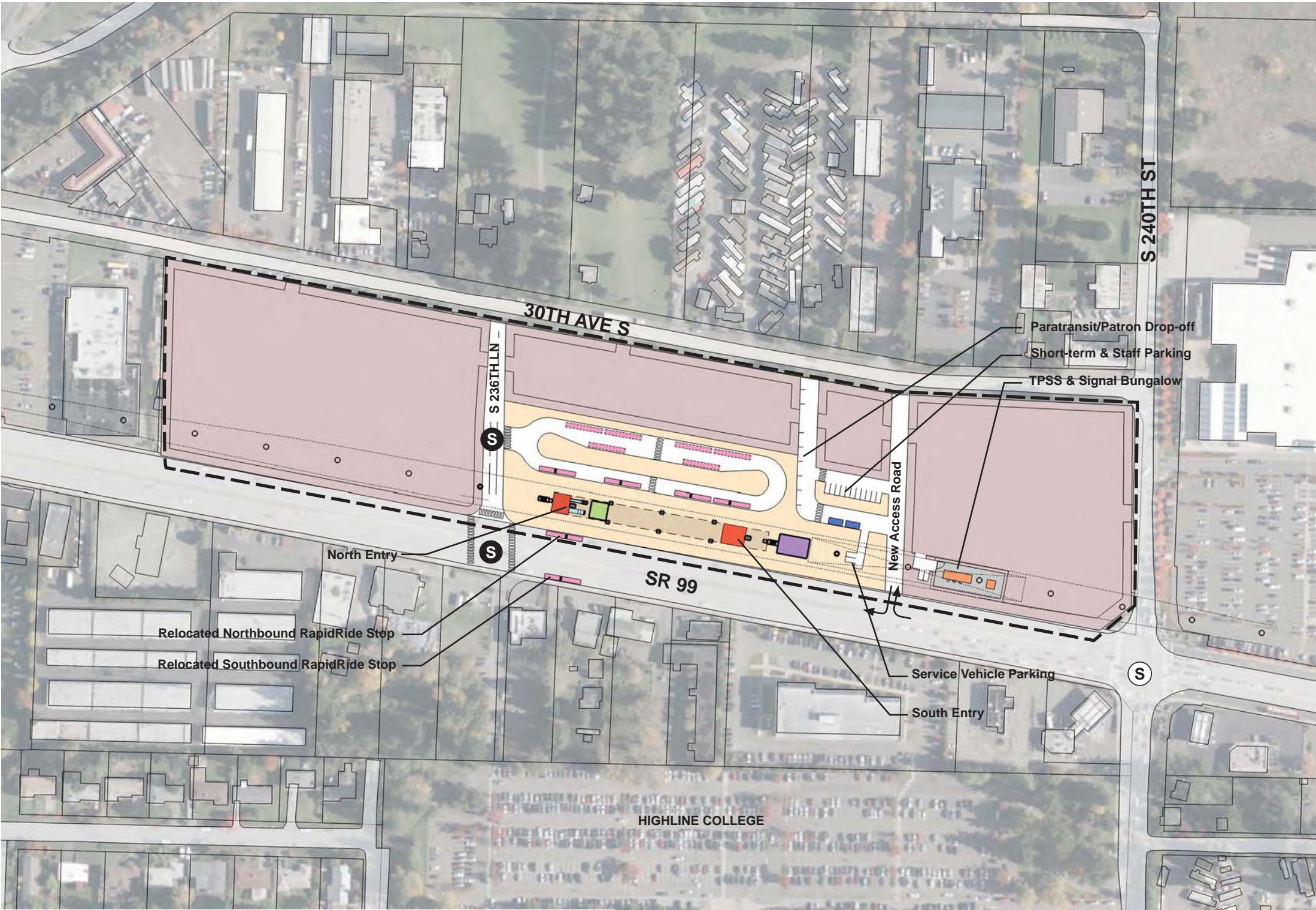


DRAFT EIS - CONCEPTUAL DESIGN
TRACK PLAN & PROFILE AND ROADWAY RECONSTRUCTION
KENT/DES MOINES SR 99 EAST STATION OPTION
STA 93+00 TO STA 107+68.31

APRIL 2015

SR99-E4-PP07
47

SOUND TRANSIT FEDERAL WAY LINK EXTENSION



- STATION PLAZA

VERTICAL CIRCULATION

TICKETING / ENTRY HALL

PLATFORM

ANCILLARY SPACES

TPSS
- BUS LAYOVER

BUS PICK-UP / DROP OFF

PARATRANSIT

BICYCLE STORAGE

CONSTRUCTION STAGING / PARKING

- STATION AREA FOOTPRINT
- S

S

SIGNALIZED INTERSECTION (EXISTING)

SIGNALIZED INTERSECTION (PROPOSED)

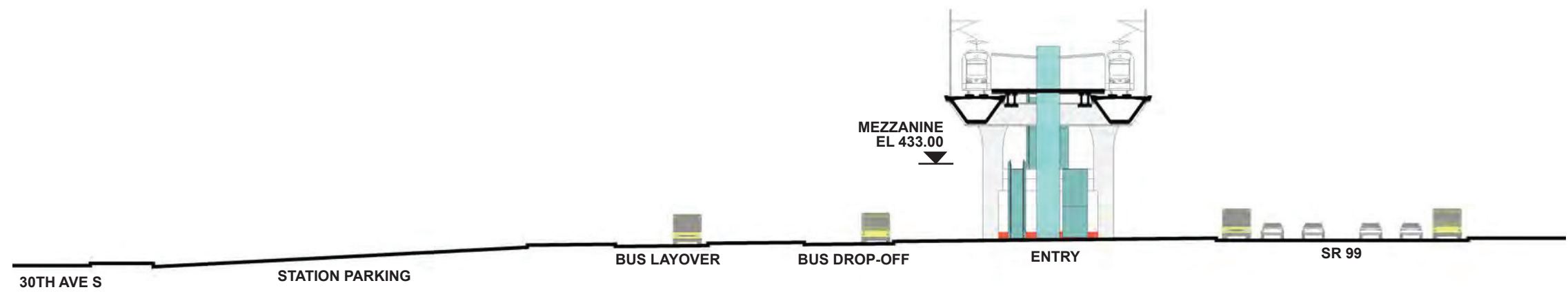
ASSUMPTIONS:

Kent/Des Moines SR 99 East Station Option	
Alternative(s):	SR 99; I-5
Boardings	3,000
Boardings (with 216th Station)	2,500
Boardings (interim terminus)	4,500
Station Configuration	
Terminus / In-Line	Interim Terminus
Station Type	Center Platform - Elevated
Platform Width	34'
Tail track	900'
Crossover	Yes
TPSS	Yes
Program	
KC Metro Ancillary Spaces (SF)	200
ST Ancillary Spaces (SF)	1,800
Total Ancillary Spaces (SF)	2,000
Vertical Circulation	
# of entrances	2
# of escalators	2
# of staircases (patron)	2
# of elevators	2
# of emergency stairs	2
Bus/ Paratransit Facilities	
Bus bays (KCM)	2 bays, one 60' coach each
Bus bays (ST)	1 bay, two 60' coaches
Rapid Ride	On-street at SR 99
Bus layover (KCM)	2 bays, two 60' coaches each
Bus layover (ST)	1 bay, two 60' coaches
Paratransit spaces	1 permanent, 1 interim
Communications Facility	Tier 2
Parking & Amenities	
Bike storage	900 SF
Patron drop-off	6 spaces
Short-term patron parking	7 to 10 spaces
Staff parking	4 spaces
Service/emerg. vehicle park.	2 spaces, separate lot
Signal bungalow / TPSS park.	2 spaces, dedicated
Long-term patron parking	500 spaces (structure)
Temporary patron parking*	500 spaces (surface)
Total proposed patron parking*	1000 spaces

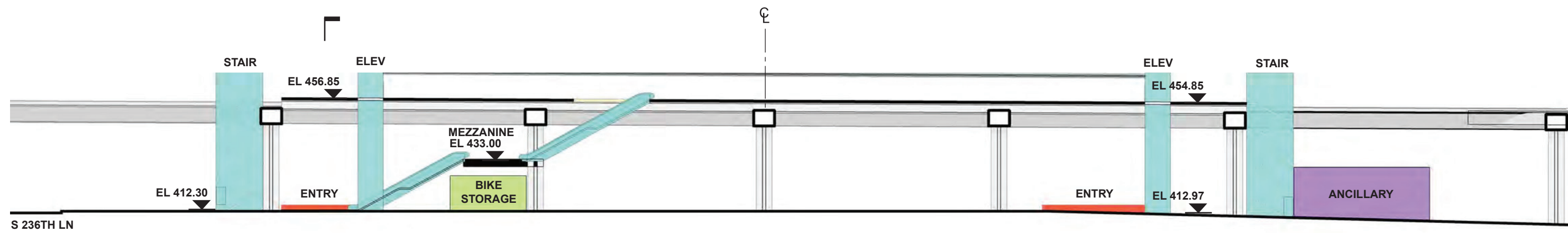
*Only required for interim terminus condition



SOUND TRANSIT FEDERAL WAY LINK EXTENSION

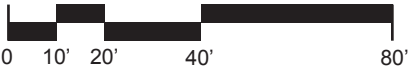


SECTION LOOKING SOUTH



SECTION LOOKING EAST

- | | |
|------------------------|--------------------------------|
| STATION PLAZA | BUS LAYOVER |
| VERTICAL CIRCULATION | BUS PICK-UP / DROP OFF |
| TICKETING / ENTRY HALL | PARATRANSIT |
| PLATFORM | BICYCLE STORAGE |
| ANCILLARY SPACES | CONSTRUCTION STAGING / PARKING |
| TPSS | |



7/17/2014 11:36:52 AM JHAMMERQUIST G:\BWM\PROJECTS\67612\FEDERAL WAY TRANSIT EXTENSION\2 CLIENT\2 DATA\INCOMING HDR\40717 UPDATED TITLEBLOCK.DWG

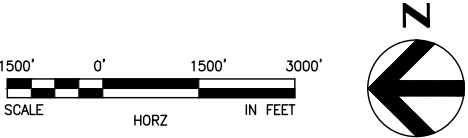


SOUND TRANSIT FEDERAL WAY LINK EXTENSION



SR99 SHEET LAYOUT MATRIX																
	1	2	3	4	5	6	7	8	9	10	11	12	13	14	15	16
A - SR 99 ALTERNATIVE	X	X	X	X	X	X	X	X	X	X	X	X	X	X	X	X
B - S 216TH WEST STATION OPTION (POTENTIAL ADDITIONAL STATION)	X	X	X													
C - S 216TH EAST STATION OPTION (POTENTIAL ADDITIONAL STATION)		X	X													
D - KENT/DES MOINES SR 99 MEDIAN STATION OPTION				X	X	X										
E - KENT/DES MOINES SR 99 EAST STATION OPTION				X	X	X	X									
F - KENT/DES MOINES HC CAMPUS STATION OPTION			X	X	X	X	X									
F - KDM HC CAMPUS OPTION FROM S 216TH WEST STATION OPTION						X	X	X	X	X						
G - S 260TH WEST STATION OPTION (POTENTIAL ADDITIONAL STATION)					X	X	X	X	X							
H - S 260TH EAST STATION OPTION (POTENTIAL ADDITIONAL STATION)							X	X	X	X						
J - S 272ND REDONDO TRENCH STATION OPTION								X	X	X	X	X	X	X		
K - FEDERAL WAY SR 99 STATION OPTION															X	X

I - NOT USED

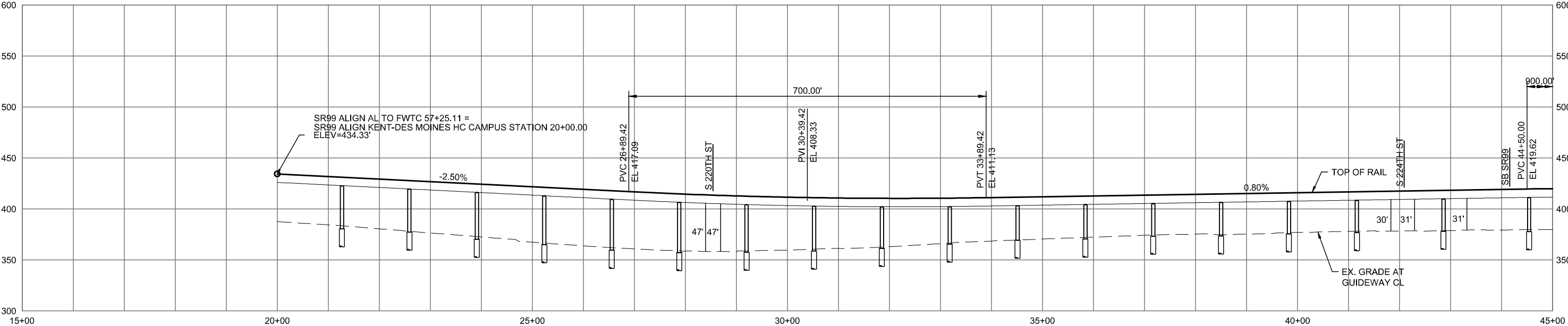
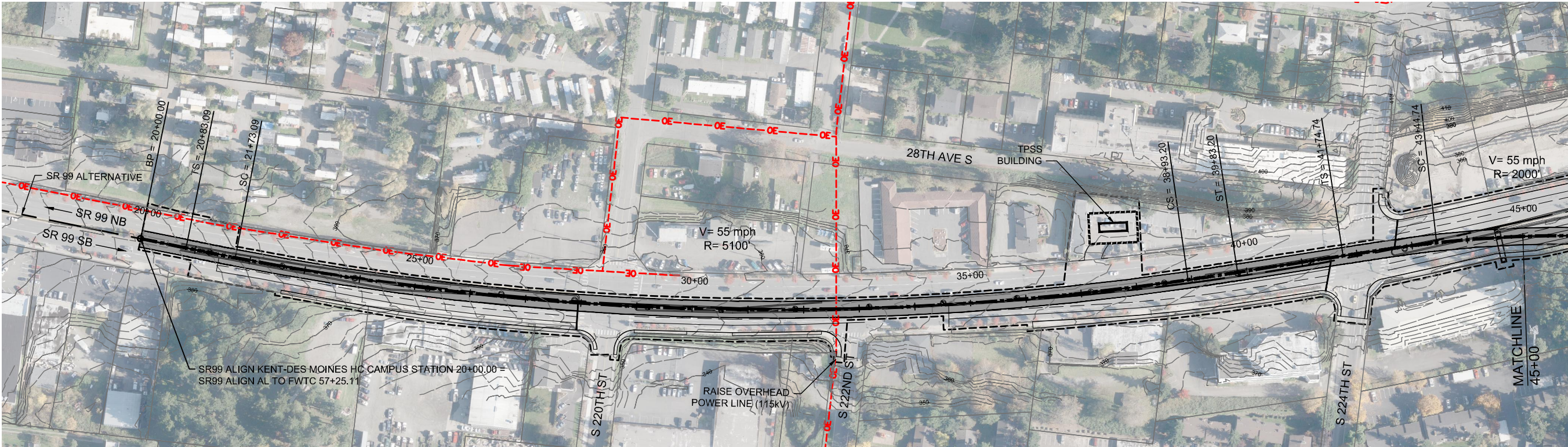


DRAFT EIS - CONCEPTUAL DESIGN
KENT / DES MOINES HC CAMPUS STATION OPTION
SHEET INDEX KEYMAP

APRIL 2015

SR99-F00-GX02
50

SOUND TRANSIT FEDERAL WAY LINK EXTENSION



2/27/2015 12:35:55 PM C:\P\WORKING\SEAD\114119\F KENT DES MOINES HC CAMPUS STATION.DWG CFOX

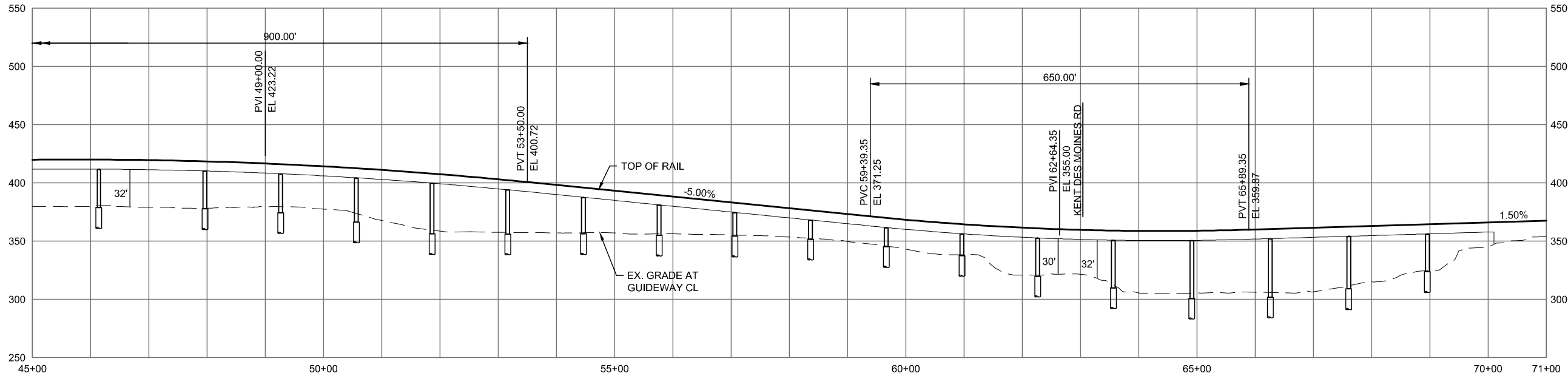
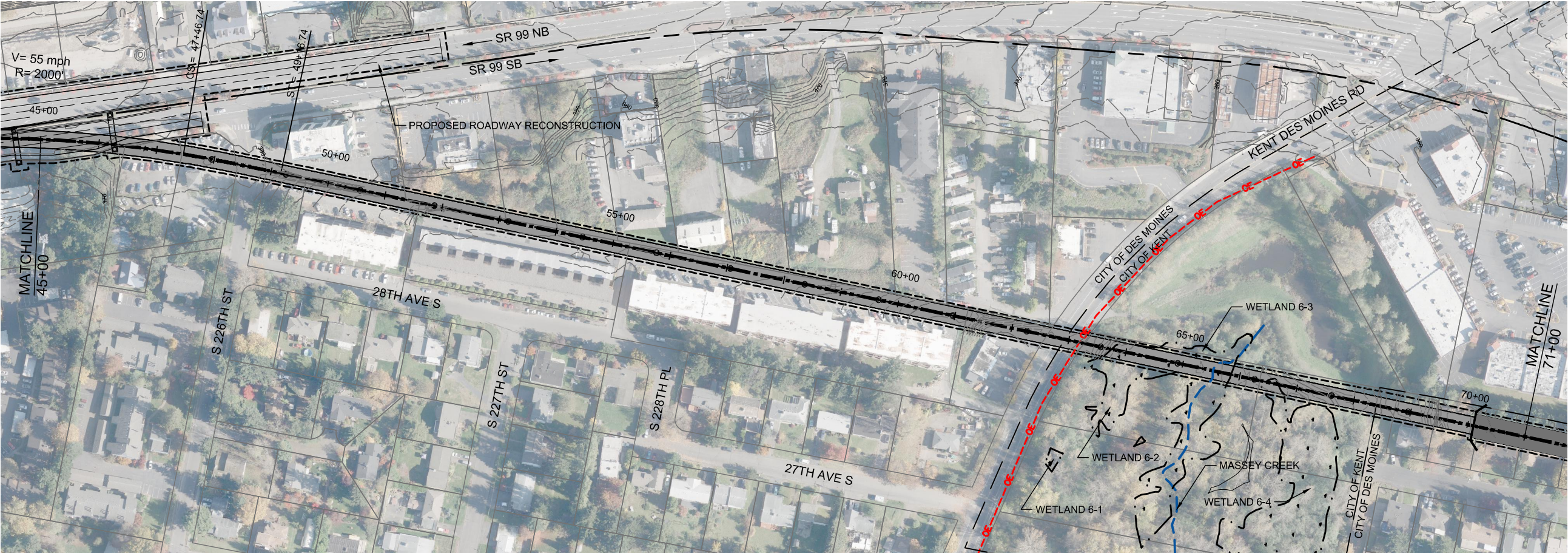


DRAFT EIS - CONCEPTUAL DESIGN
TRACK PLAN & PROFILE AND ROADWAY RECONSTRUCTION
KENT/DES MOINES HC CAMPUS STATION OPTION
STA 20+00 TO STA 45+00

APRIL 2015

SR99-F1-PP03
51

SOUND TRANSIT FEDERAL WAY LINK EXTENSION



2/27/2015 12:45 PM
C:\WORKING\SEAD\114119F_KENT DES MOINES HC CAMPUS STATION.DWG

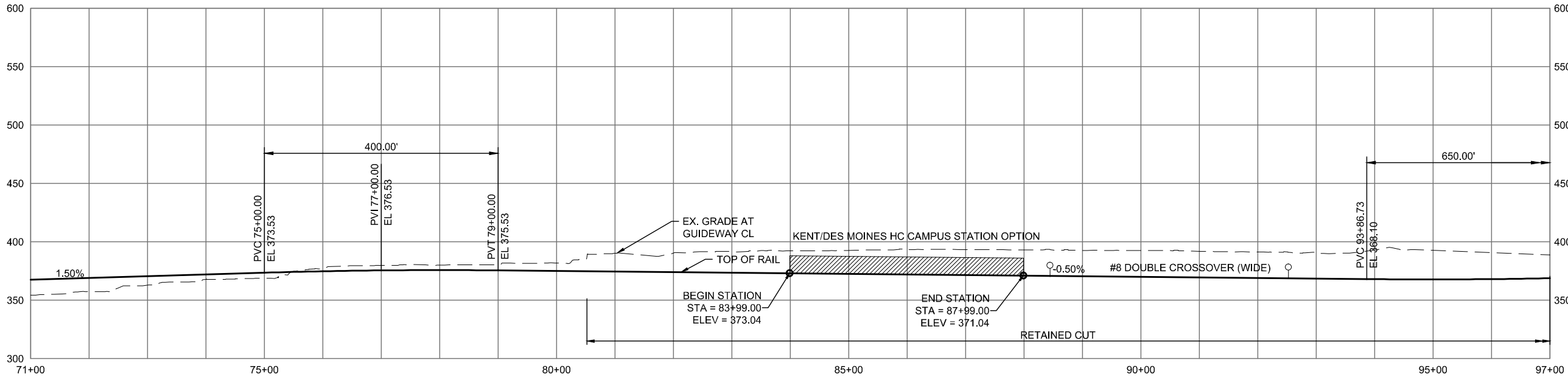
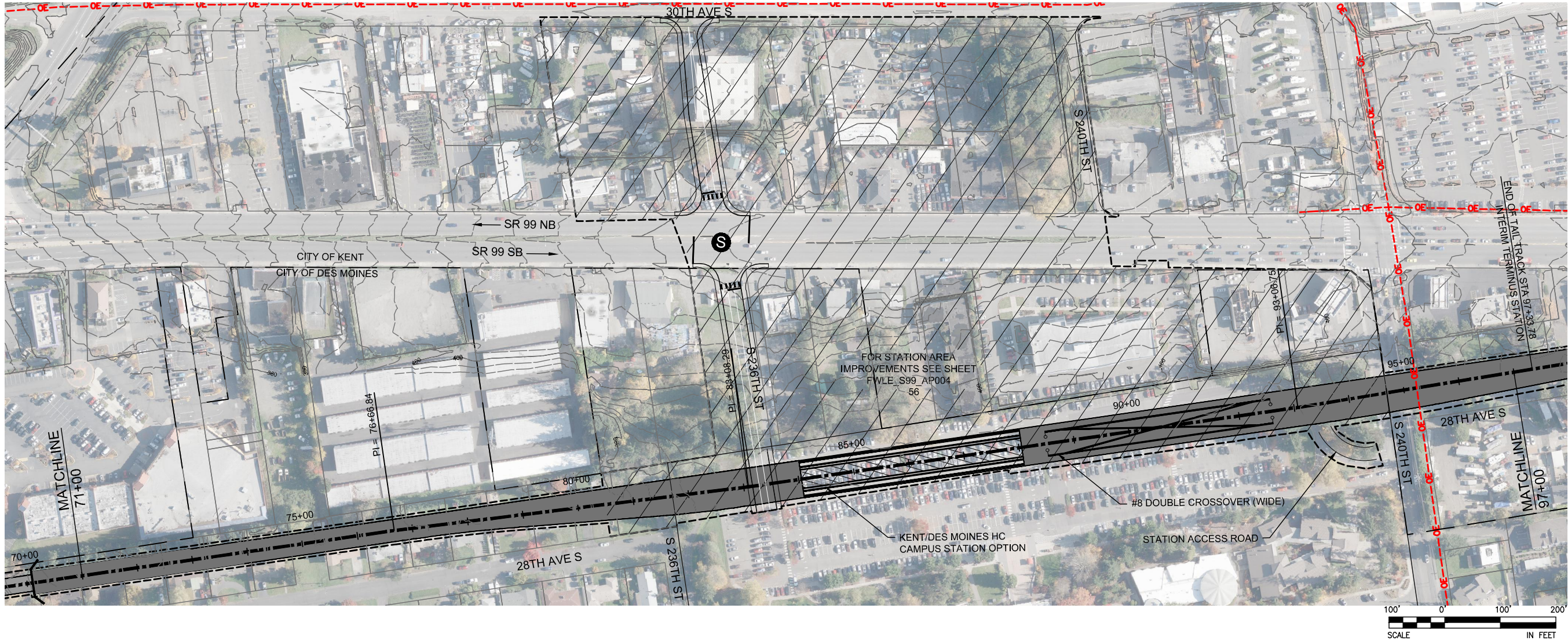


DRAFT EIS - CONCEPTUAL DESIGN
TRACK PLAN & PROFILE AND ROADWAY RECONSTRUCTION
KENT/DES MOINES HC CAMPUS STATION OPTION
STA 45+00 TO STA 71+00

APRIL 2015

SR99-F2-PP04
52

SOUND TRANSIT FEDERAL WAY LINK EXTENSION



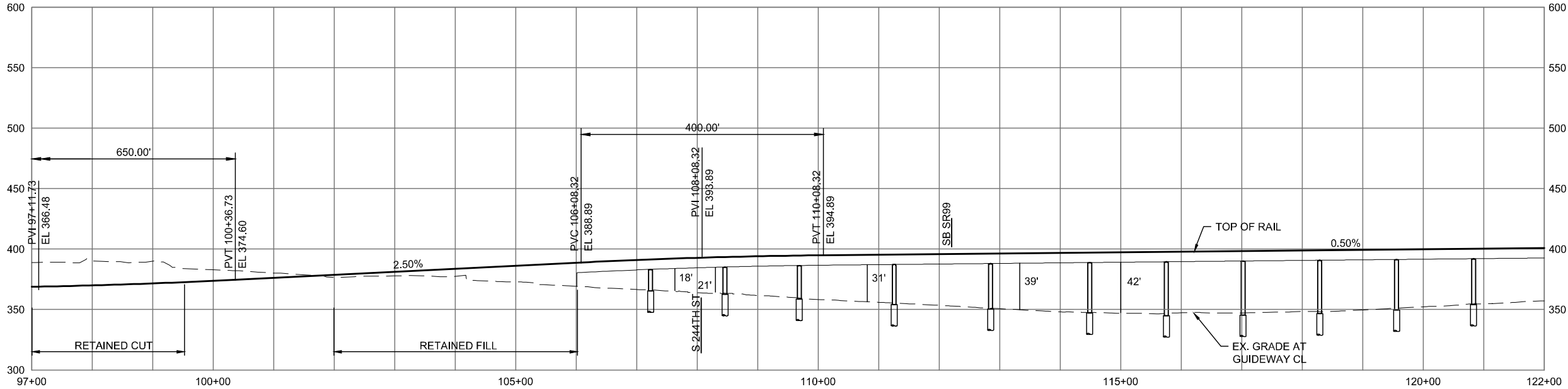
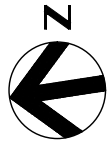
DRAFT EIS - CONCEPTUAL DESIGN
TRACK PLAN & PROFILE AND ROADWAY RECONSTRUCTION
KENT/DES MOINES HC CAMPUS STATION OPTION
STA 71+00 TO STA 97+00



APRIL 2015

SR99-F3-PP05
53

SOUND TRANSIT FEDERAL WAY LINK EXTENSION



2/27/2015 12:23 PM C:\WORKING\SEAD\114119F_KENT DES MOINES HC CAMPUS STATION.DWG CFOX



DRAFT EIS - CONCEPTUAL DESIGN
TRACK PLAN & PROFILE AND ROADWAY RECONSTRUCTION
KENT/DES MOINES HC CAMPUS STATION OPTION
STA 97+00 TO STA 122+00

APRIL 2015

SR99-F4-PP06
54