

Federal Way Link Extension

Draft Environmental Impact Statement

CONCEPTUAL DESIGN DRAWINGS

Appendix F



Contents

SR 99 Alternative: pp. 1-25

- S 216th West Station Option: pp. 26-31
- S 216th East Station Option: pp. 32-36
- Kent/Des Moines SR 99 Median Station Option: pp. 37-42
- Kent/Des Moines SR 99 East Station Option: pp. 43-49
- Kent/Des Moines HC Campus Station Option: pp. 50-57
- Kent/Des Moines HC Campus Station Option from S 216th West Station Option: pp. 58-63
- S 260th West Station Option: pp. 64-71
- S 260th East Station Option: pp. 72-78
- S 272nd Redondo Trench Station Option: pp. 79-88
- Federal Way SR 99 Station Option: pp. 89-93

I-5 Alternative: pp. 94-118

- Kent/Des Moines At-Grade Station Option: pp. 119-124
- Kent/Des Moines SR 99 East Station Option: pp. 125-130
- Landfill Median Alignment Option: pp.131-134
- Federal Way I-5 Station Option: pp. 135-138
- Federal Way S 320th Park-and-Ride Station Option: pp. 139-143

SR 99 to I-5 Alternative: pp. 144-151

I-5 to SR 99 Alternative: pp. 152-160

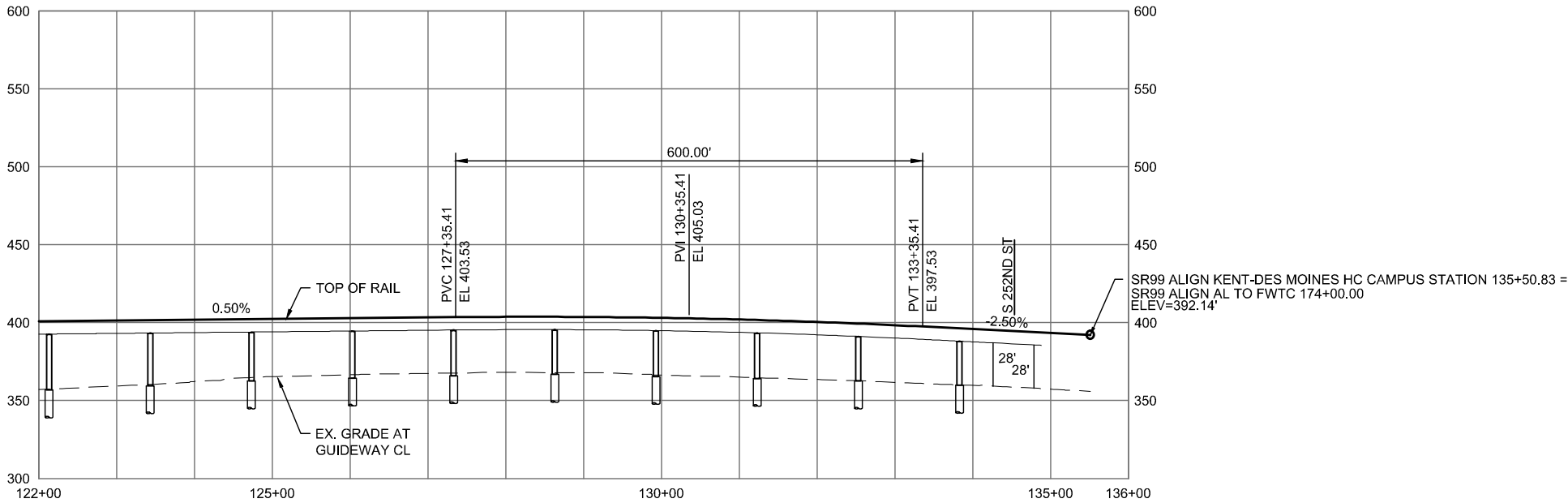
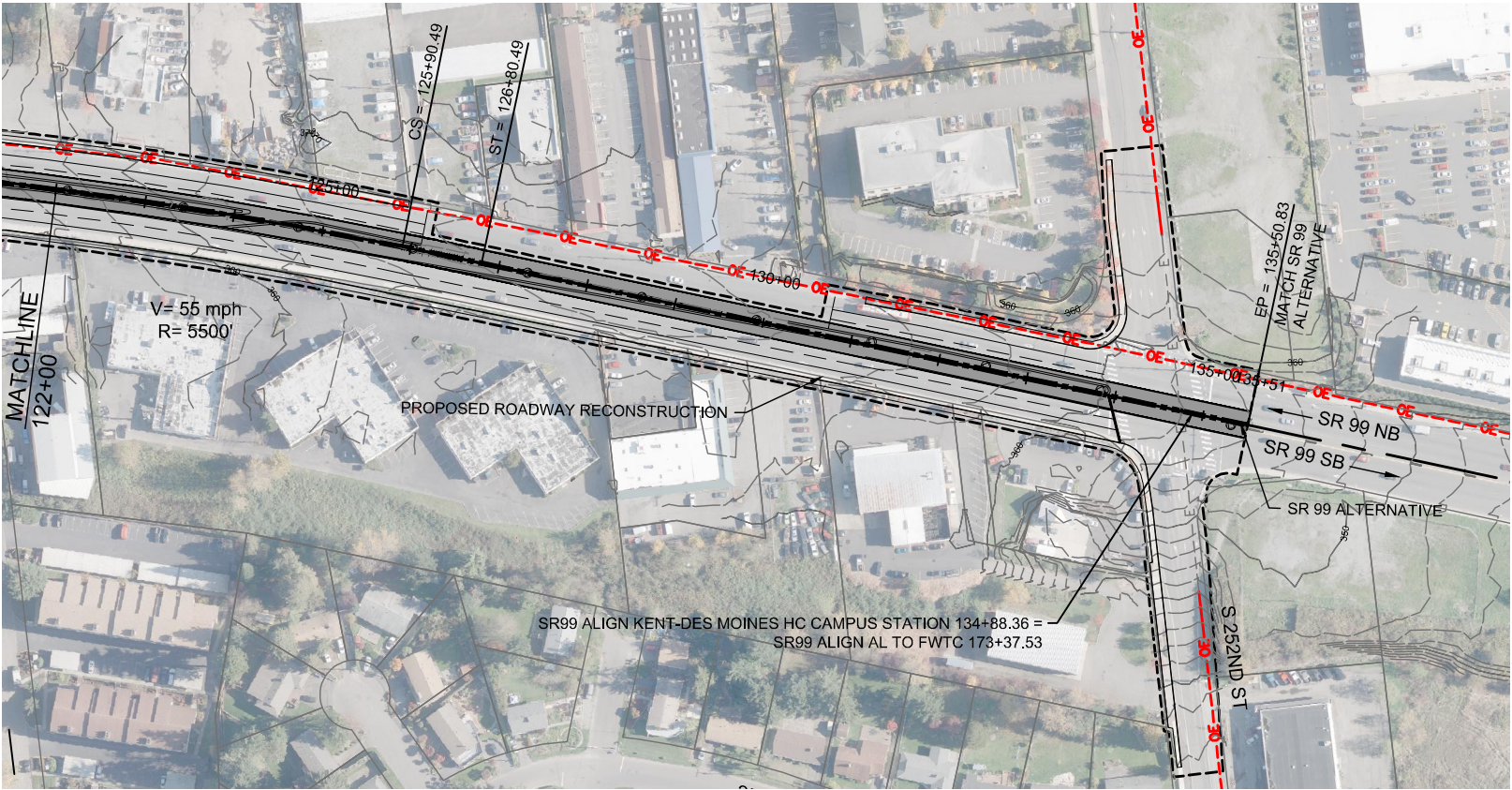
- S 260th West Station Option: pp. 161-163

This page intentionally left blank.

DRAFT EIS - CONCEPTUAL DESIGN SR 99 ALTERNATIVE

This page intentionally left blank.

SOUND TRANSIT FEDERAL WAY LINK EXTENSION



2/27/2015 12:43:33 PM
C:\P\WORKING\SEAD\114119F_KENT DES MOINES HC CAMPUS STATION.DWG



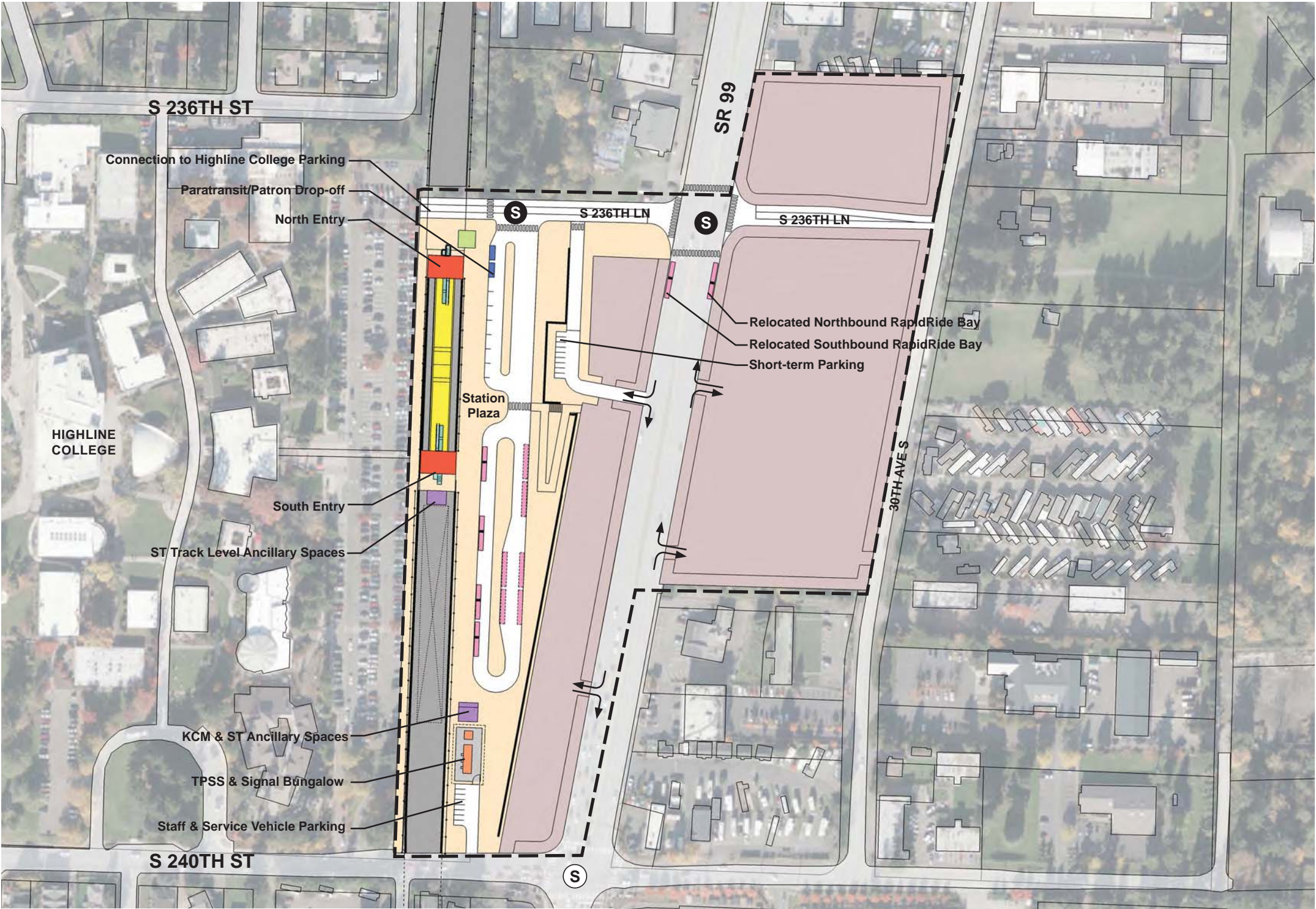
DRAFT EIS - CONCEPTUAL DESIGN
TRACK PLAN & PROFILE AND ROADWAY RECONSTRUCTION
KENT/DES MOINES HC CAMPUS STATION OPTION
STA 122+00 TO STA 134+88.36

APRIL 2015

SR99-F5-PP07
55

SOUND TRANSIT FEDERAL WAY LINK EXTENSION

7/17/2014 11:36:52 AM JHAMMERQUIST G:\BWM\PROJECTS\67612\FEDERAL WAY TRANSIT EXTENSION\2 CLIENT\2 DATA\INCOMING HDR\40717 UPDATED TITLEBLOCK\DES_TTLB\KDWG



- STATION PLAZA

VERTICAL CIRCULATION

TICKETING / ENTRY HALL

PLATFORM

ANCILLARY SPACES

TPSS
- BUS LAYOVER

BUS PICK-UP / DROP OFF

PARATRANSIT

BICYCLE STORAGE

CONSTRUCTION STAGING / PARKING

- STATION AREA FOOTPRINT

S

SIGNALIZED INTERSECTION (EXISTING)

S

SIGNALIZED INTERSECTION (PROPOSED)

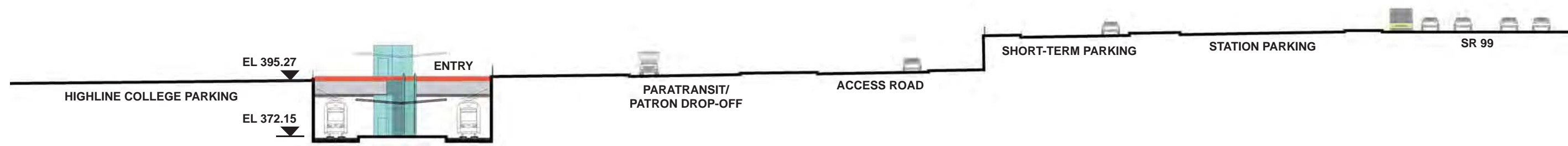
ASSUMPTIONS:

Kent/Des Moines HC Campus Station Option	
Alternative(s):	SR 99
Boardings	3,000
Boardings (with 216th Station)	2,500
Boardings (interim terminus)	4,500
Station Configuration	
Terminus / In-Line	Interim Terminus
Station Type	Center Platform - Trench
Platform Width	34'
Tail track	900'
Crossover	Yes
TPSS	Yes
Program	
KC Metro Ancillary Spaces (SF)	200
ST Ancillary Spaces (SF)	1,800
Total Ancillary Spaces (SF)	2,000
Vertical Circulation	
# of entrances	2
# of escalators	2
# of staircases (patron)	2
# of elevators	2
# of emergency stairs	2
Bus/ Paratransit Facilities	
Bus bays (KCM)	2 bays, one 60' coach each
Bus bays (ST)	1 bay, two 60' coaches
Rapid Ride	On-street at SR 99
Bus layover (KCM)	2 bays, two 60' coaches each
Bus layover (ST)	1 bay, two 60' coaches
Paratransit	1 permanent, 1 interim
Communications Facility	Tier 2
Parking & Amenities	
Bike storage	900 SF
Patron drop-off	6 spaces
Short-term patron parking	7 to 10 spaces
Staff parking	4 spaces
Service/emerg. vehicle park.	2 spaces, separate lot
Signal bungalow / TPSS park.	2 spaces, dedicated
Long-term patron parking	500 spaces (structure)
Temporary patron parking*	500 spaces (surface)
Total proposed patron parking*	1000 spaces
HC Replacement Parking	520 spaces

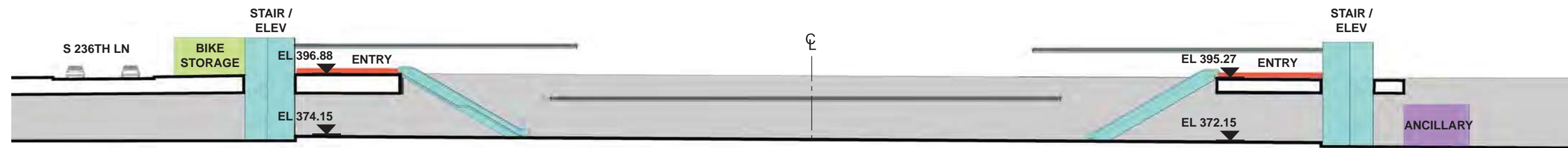
*Only required for interim terminus condition



SOUND TRANSIT FEDERAL WAY LINK EXTENSION

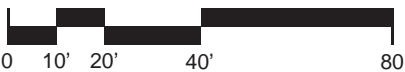


SECTION LOOKING NORTH



SECTION LOOKING EAST

- | | |
|------------------------|--------------------------------|
| STATION PLAZA | BUS LAYOVER |
| VERTICAL CIRCULATION | BUS PICK-UP / DROP OFF |
| TICKETING / ENTRY HALL | PARATRANSIT |
| PLATFORM | BICYCLE STORAGE |
| ANCILLARY SPACES | CONSTRUCTION STAGING / PARKING |
| TPSS | |



7/17/2014 11:26:52 AM JHAMMERQUIST G:\BWA PROJECTS\67612 FEDERAL WAY TRANSIT EXTENSION\2 CLIENT\2 DATA\INCOMING HDR\40717 UPDATED TITLEBLOCKS\TTLBKK.DWG

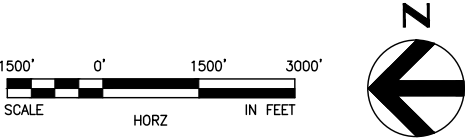


SOUND TRANSIT FEDERAL WAY LINK EXTENSION



SR99 SHEET LAYOUT MATRIX																
	1	2	3	4	5	6	7	8	9	10	11	12	13	14	15	16
A - SR 99 ALTERNATIVE	X	X	X	X	X	X	X	X	X	X	X	X	X	X	X	X
B - S 216TH WEST STATION OPTION (POTENTIAL ADDITIONAL STATION)	X	X	X													
C - S 216TH EAST STATION OPTION (POTENTIAL ADDITIONAL STATION)		X	X													
D - KENT/DES MOINES SR 99 MEDIAN STATION OPTION				X	X	X										
E - KENT/DES MOINES SR 99 EAST STATION OPTION				X	X	X	X									
F - KENT/DES MOINES HC CAMPUS STATION OPTION			X	X	X	X	X									
F - KDM HC CAMPUS OPTION FROM S 216TH WEST STATION OPTION						X	X	X	X	X						
G - S 260TH WEST STATION OPTION (POTENTIAL ADDITIONAL STATION)					X	X	X	X	X							
H - S 260TH EAST STATION OPTION (POTENTIAL ADDITIONAL STATION)							X	X	X	X						
J - S 272ND REDONDO TRENCH STATION OPTION								X	X	X	X	X	X	X		
K - FEDERAL WAY SR 99 STATION OPTION															X	X

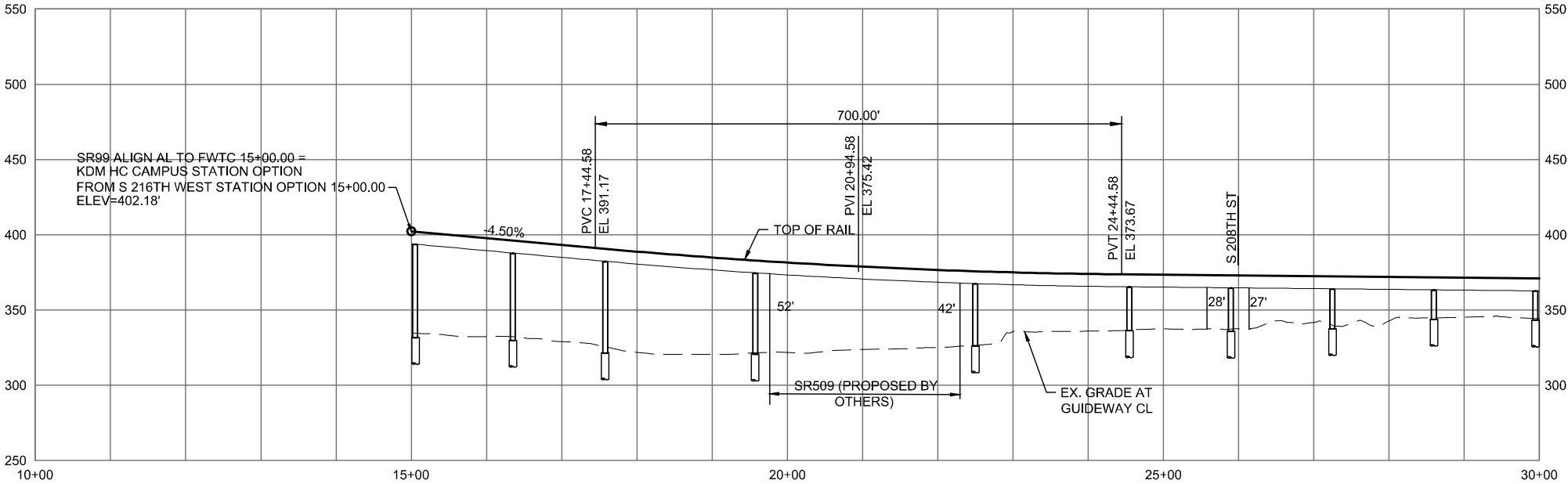
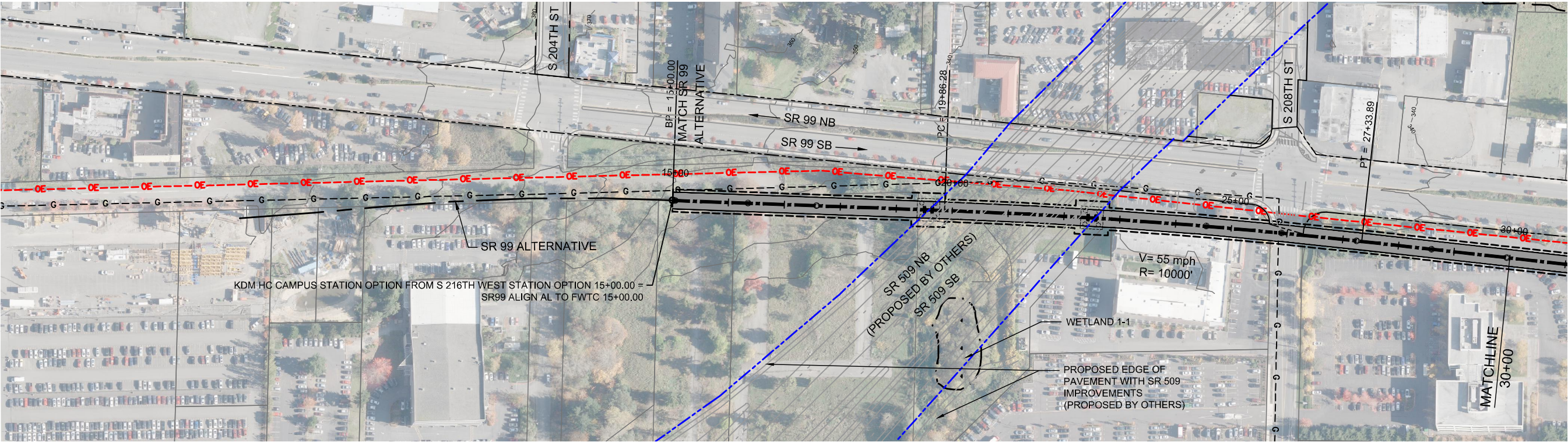
I - NOT USED



2/25/2015 9:20:45 AM
C:\P\WORKING\SEAD11417\SR99-A06-GX02.DWG



SOUND TRANSIT FEDERAL WAY LINK EXTENSION



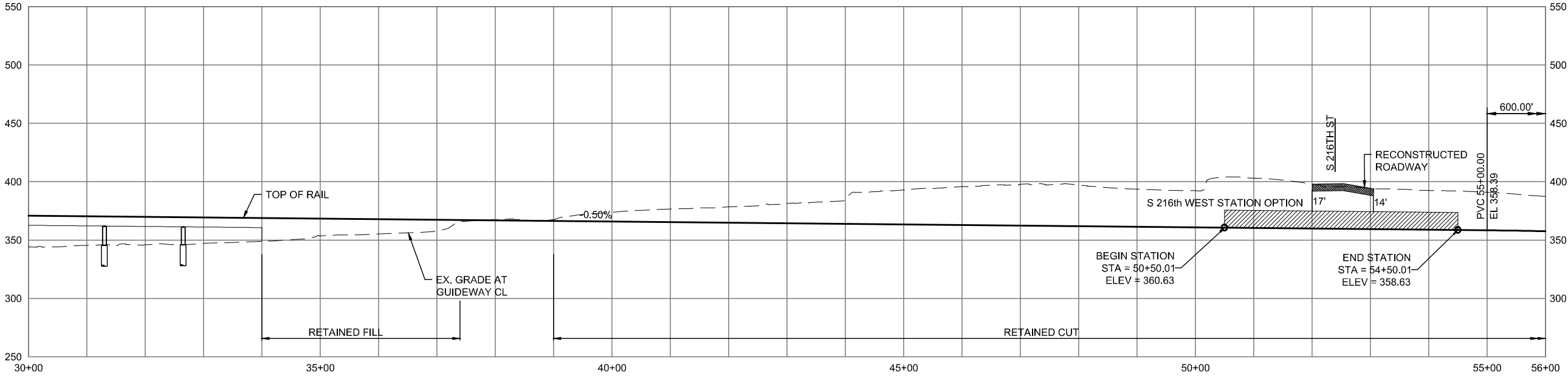
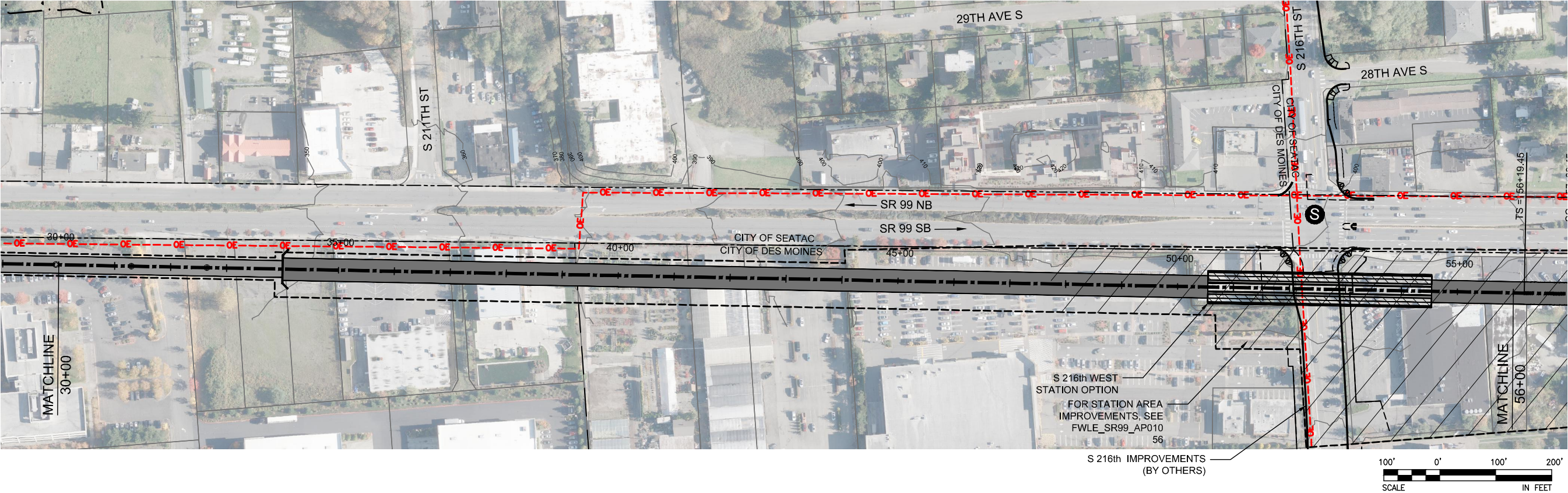
DRAFT EIS - CONCEPTUAL DESIGN
TRACK PLAN & PROFILE AND ROADWAY RECONSTRUCTION
KDM HC CAMPUS STATION OPTION FROM S 216TH WEST STATION OPTION
STA 15+00 TO STA 30+00



APRIL 2015

2/27/2015 12:54:48 PM C:\WORKING\SEAD111119\FW LINK SR99_216TH-HC OPTION.DWG C:\FOX

SOUND TRANSIT FEDERAL WAY LINK EXTENSION



2/27/2015 12:54:58 PM C:\P\WORKING\SEAD\114119\FWLE_SR99_216TH_HC_OPTION.DWG C:\FOX

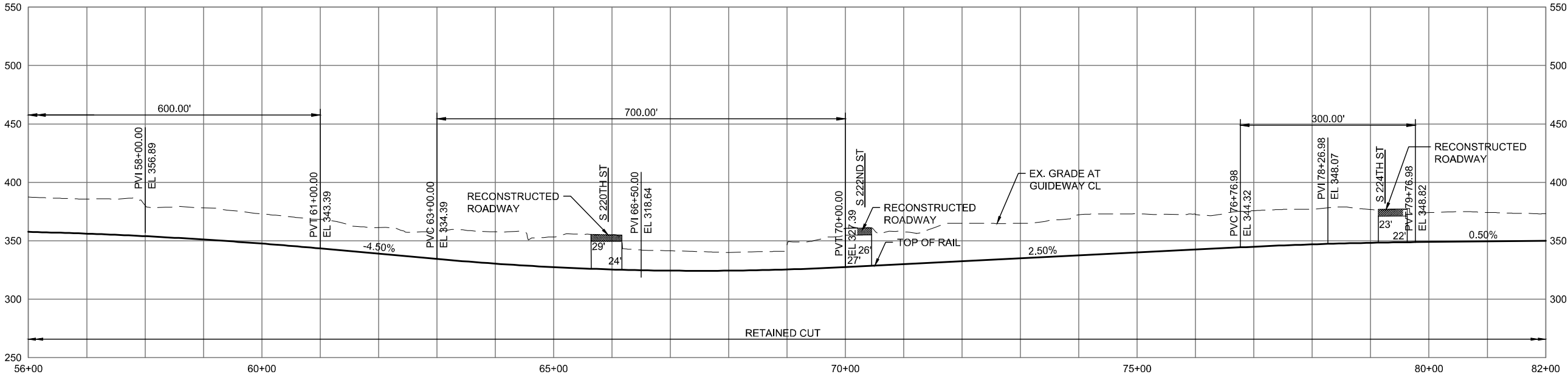
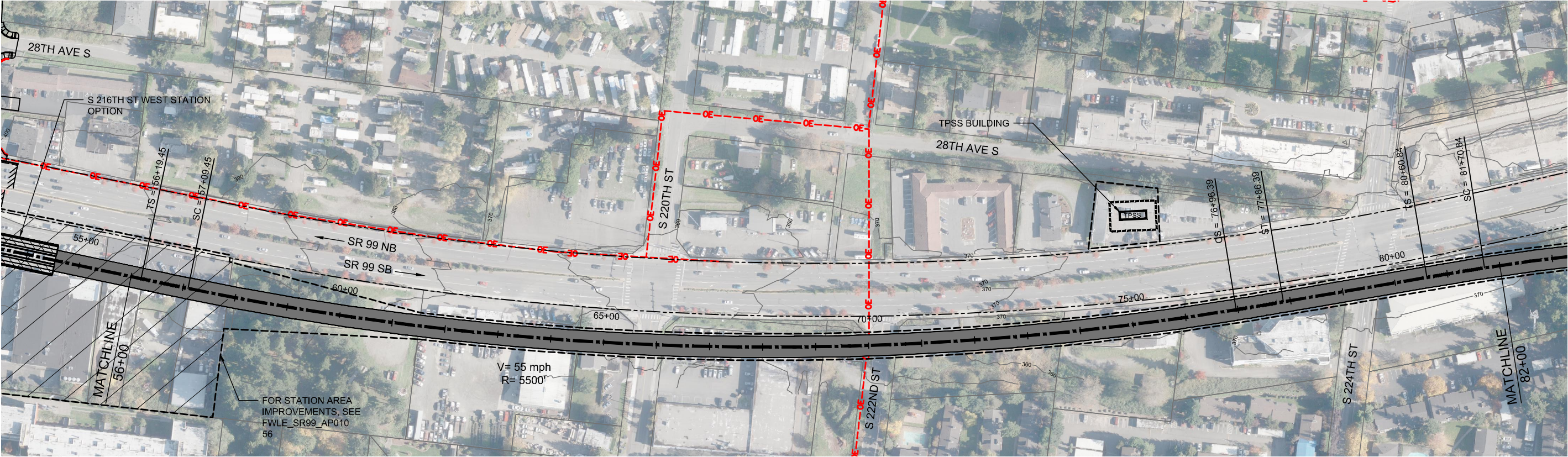


DRAFT EIS - CONCEPTUAL DESIGN
TRACK PLAN & PROFILE AND ROADWAY RECONSTRUCTION
KDM HC CAMPUS STATION OPTION FROM S 216TH WEST STATION OPTION
STA 30+00 TO STA 56+00

APRIL 2015

SR99-F7-PP02
60

SOUND TRANSIT FEDERAL WAY LINK EXTENSION



2/27/2015 12:55:08 PM C:\WORKING\SEAD114119\FWLE_SR99_210TH_HC_OPTION.DWG C:\FOX



DRAFT EIS - CONCEPTUAL DESIGN

TRACK PLAN & PROFILE AND ROADWAY RECONSTRUCTION

KDM HC CAMPUS STATION OPTION FROM S 216TH WEST STATION OPTION

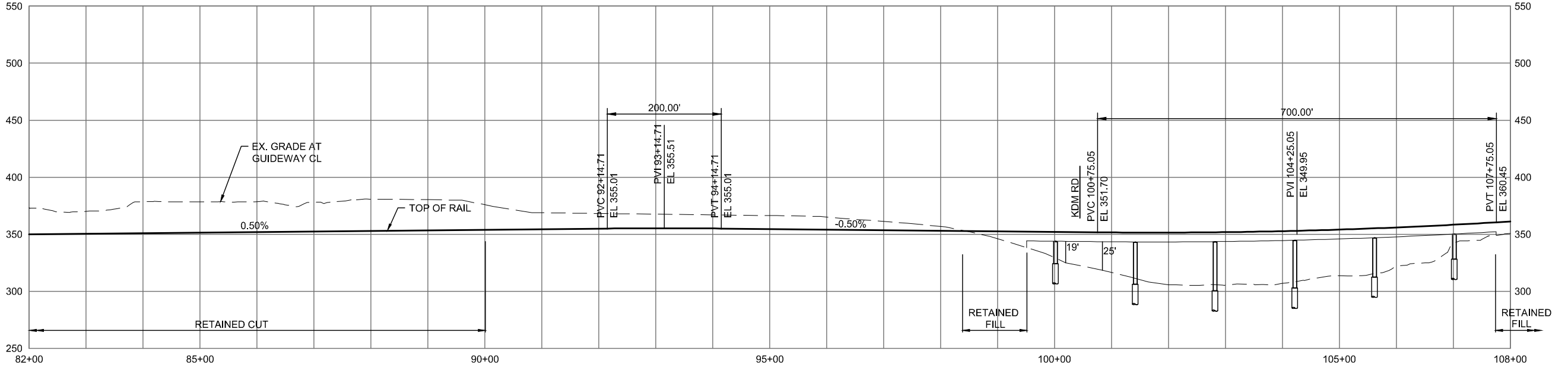
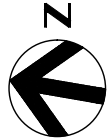
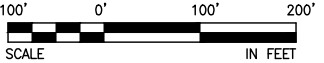
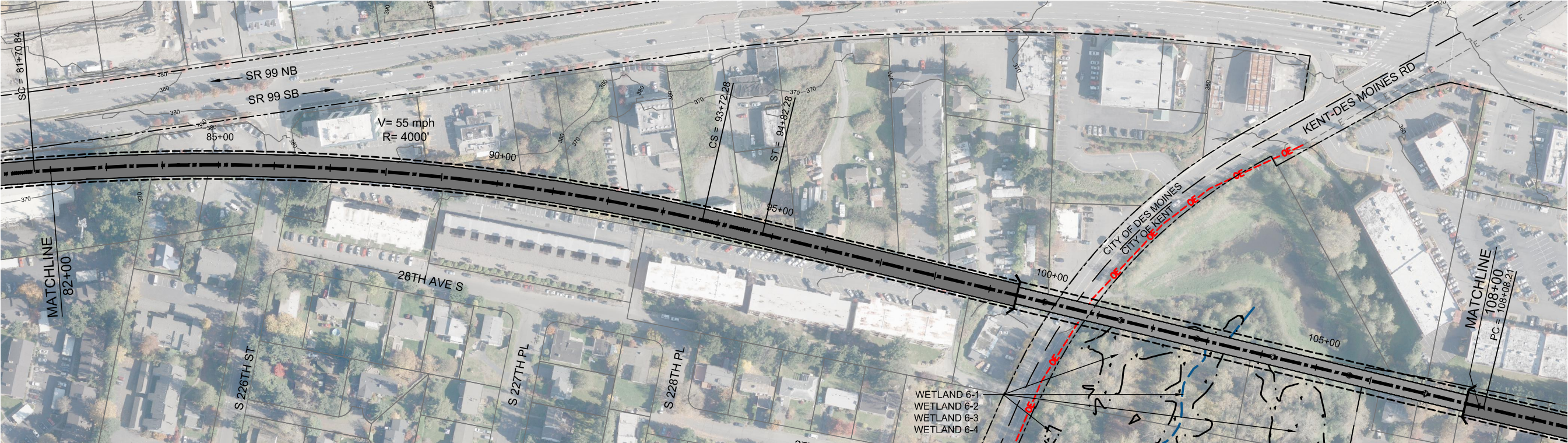
STA 56+00 TO STA 82+00

APRIL 2015

SR99-F8-PP03

61

SOUND TRANSIT FEDERAL WAY LINK EXTENSION



2/27/2015 12:55:17 PM C:\WORKING\SEAD114119\FW_PILE_S199_210TH_HC_OPTION.DWG C:\FOX

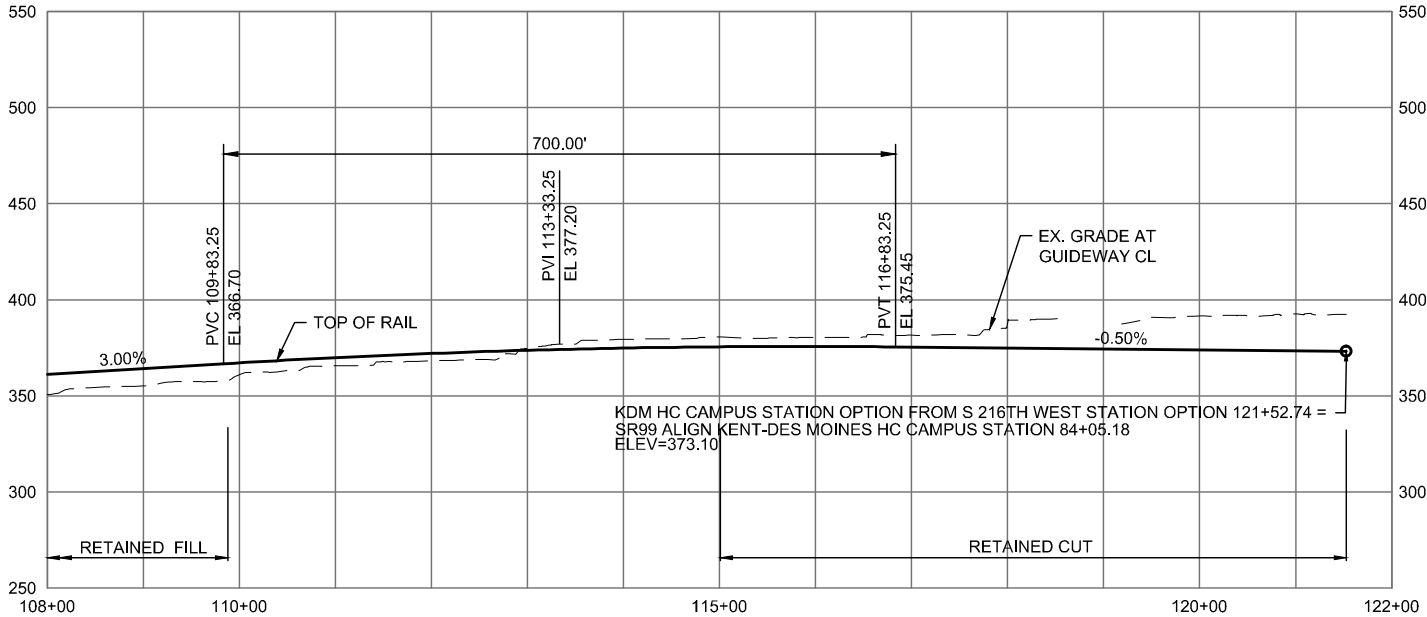
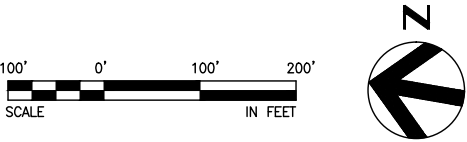


DRAFT EIS - CONCEPTUAL DESIGN
TRACK PLAN & PROFILE AND ROADWAY RECONSTRUCTION
KDM HC CAMPUS STATION OPTION FROM S 216TH WEST STATION OPTION
STA 82+00 TO STA 108+00

APRIL 2015

SR99-F9-PP04
62

SOUND TRANSIT FEDERAL WAY LINK EXTENSION



2/27/2015 12:55:28 PM C:\WORKING\SEAD\114119\FWLE SR99_216TH_HC_OPTION.DWG C:\FOX



DRAFT EIS - CONCEPTUAL DESIGN
TRACK PLAN & PROFILE AND ROADWAY RECONSTRUCTION
KDM HC CAMPUS STATION OPTION FROM S 216TH WEST STATION OPTION
STA 108+00 TO STA 121+52.74

APRIL 2015

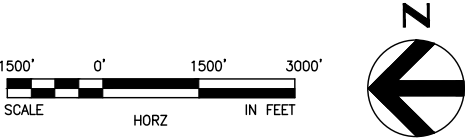
SR99-F10-PP05
63

SOUND TRANSIT FEDERAL WAY LINK EXTENSION



SR99 SHEET LAYOUT MATRIX																
	1	2	3	4	5	6	7	8	9	10	11	12	13	14	15	16
A - SR 99 ALTERNATIVE	X	X	X	X	X	X	X	X	X	X	X	X	X	X	X	X
B - S 216TH WEST STATION OPTION (POTENTIAL ADDITIONAL STATION)	X	X	X													
C - S 216TH EAST STATION OPTION (POTENTIAL ADDITIONAL STATION)		X	X													
D - KENT/DES MOINES SR 99 MEDIAN STATION OPTION				X	X	X										
E - KENT/DES MOINES SR 99 EAST STATION OPTION				X	X	X	X									
F - KENT/DES MOINES HC CAMPUS STATION OPTION			X	X	X	X	X									
F - KDM HC CAMPUS OPTION FROM S 216TH WEST STATION OPTION						X	X	X	X	X						
G - S 260TH WEST STATION OPTION (POTENTIAL ADDITIONAL STATION)					X	X	X	X	X							
H - S 260TH EAST STATION OPTION (POTENTIAL ADDITIONAL STATION)							X	X	X	X						
J - S 272ND REDONDO TRENCH STATION OPTION								X	X	X	X	X	X	X		
K - FEDERAL WAY SR 99 STATION OPTION															X	X

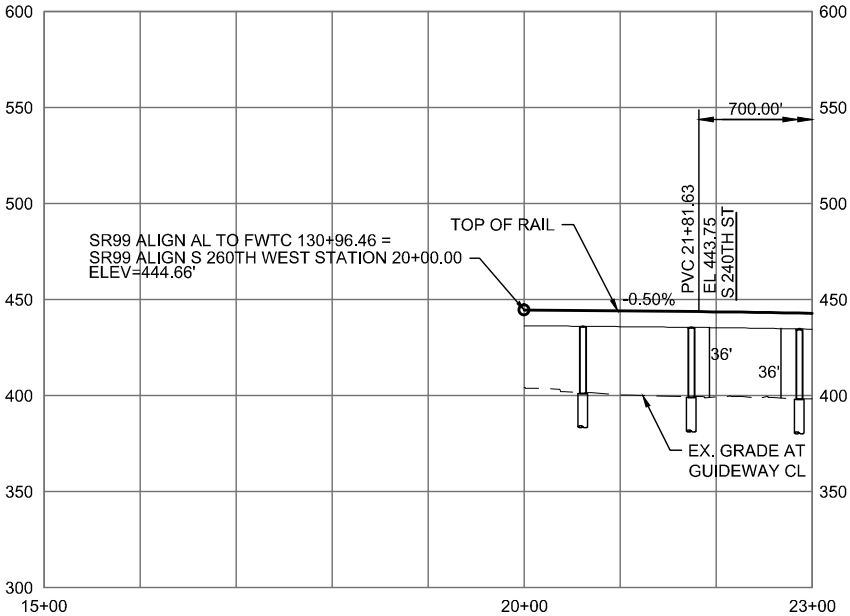
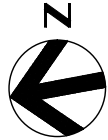
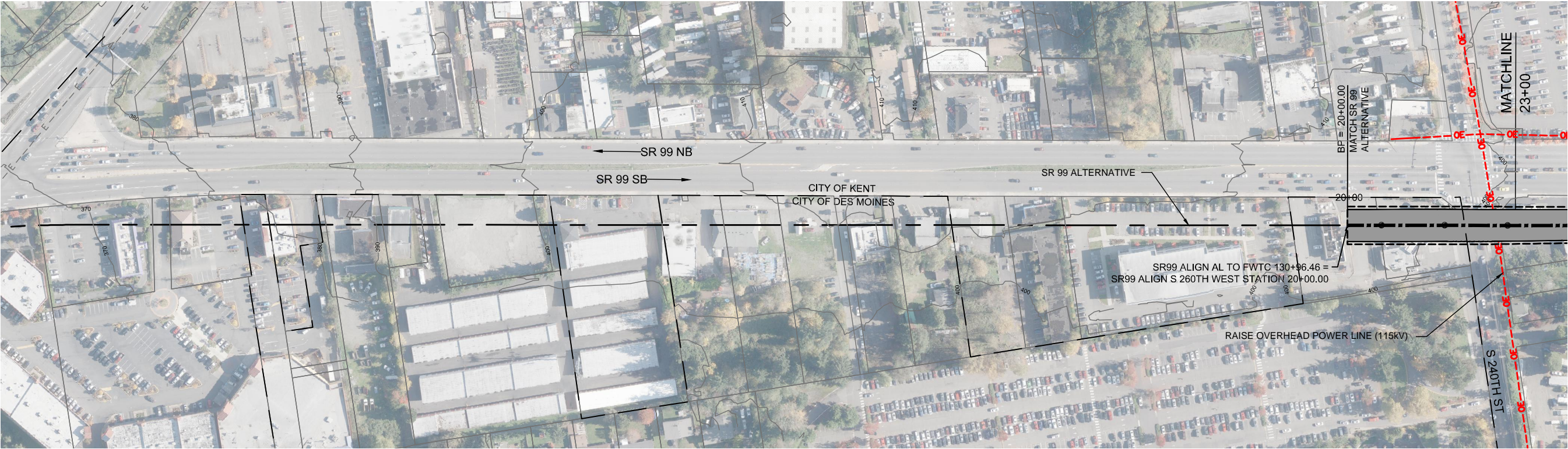
I - NOT USED



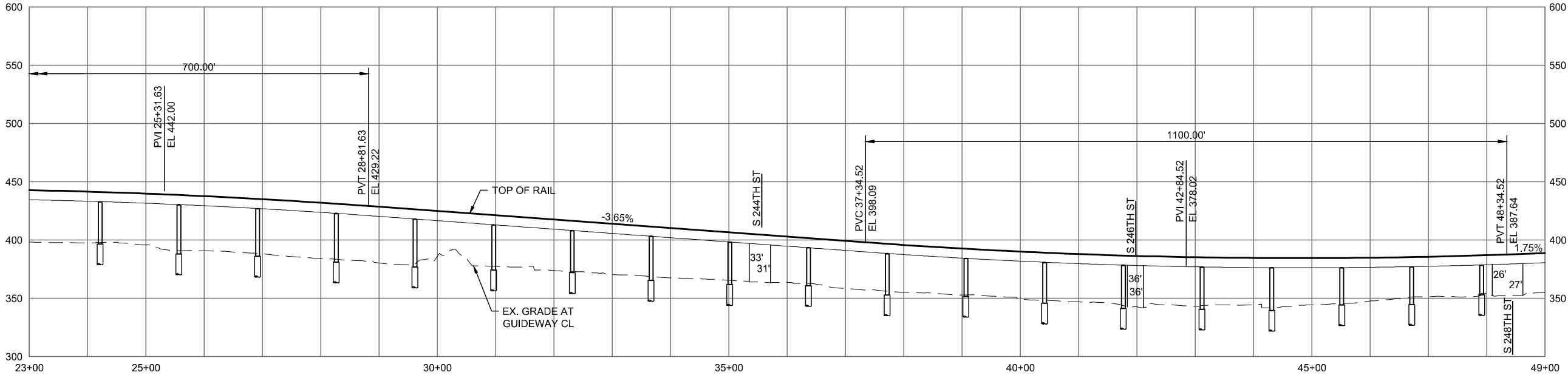
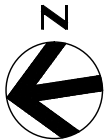
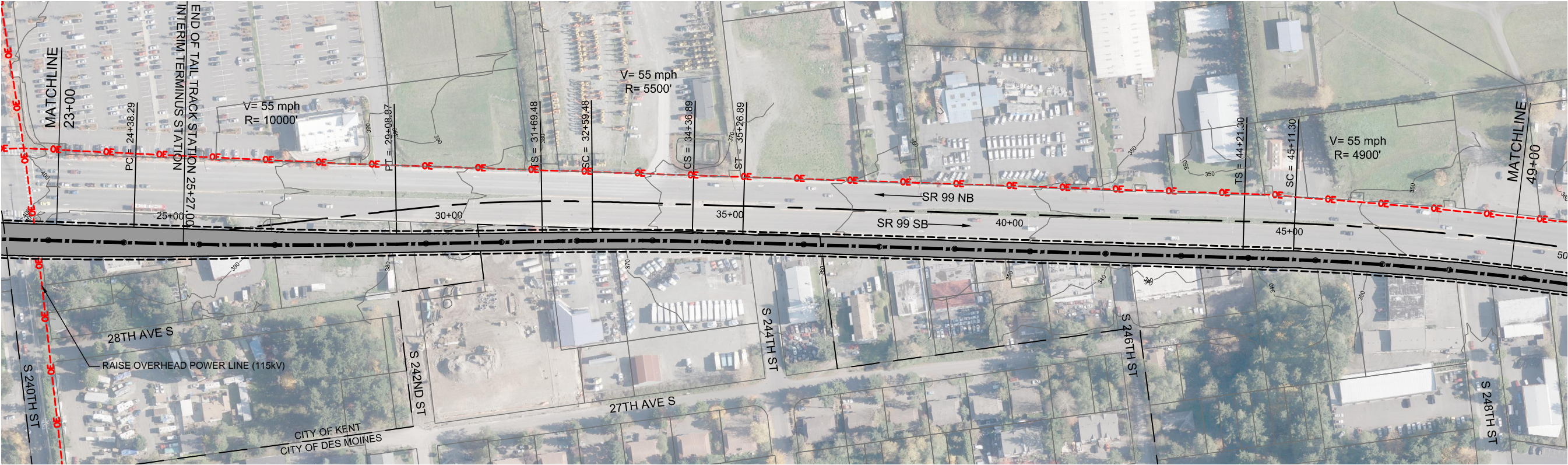
2/25/2015 9:20:48 AM
C:\P\WORKING\SEAD114117SR99-A00-GX02.DWG



SOUND TRANSIT FEDERAL WAY LINK EXTENSION



SOUND TRANSIT FEDERAL WAY LINK EXTENSION



2/25/2015 10:41:42 AM C:\WORKING\SEAD\1141196_S260TH WEST STATION.DWG CFOX

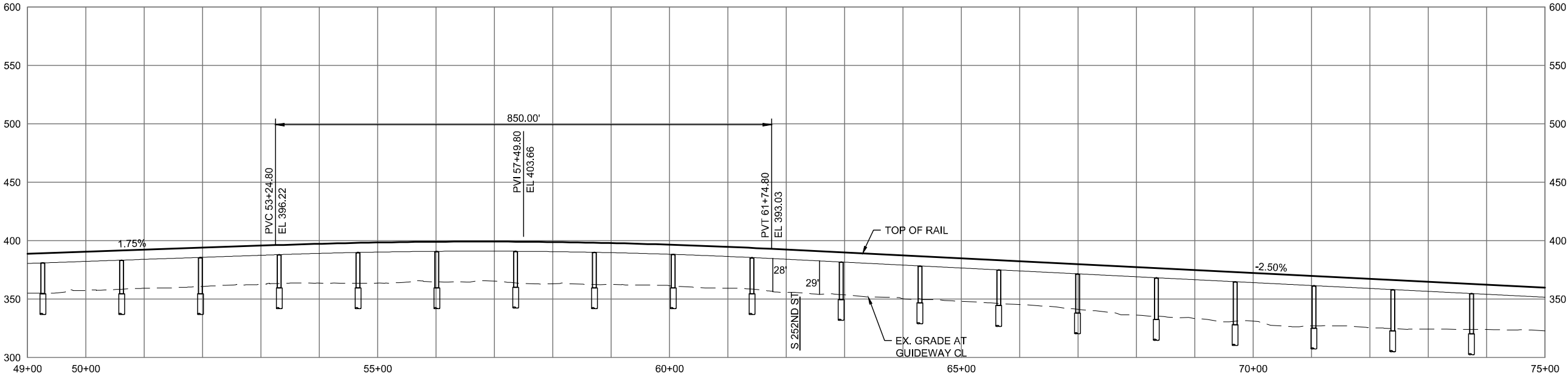
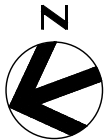
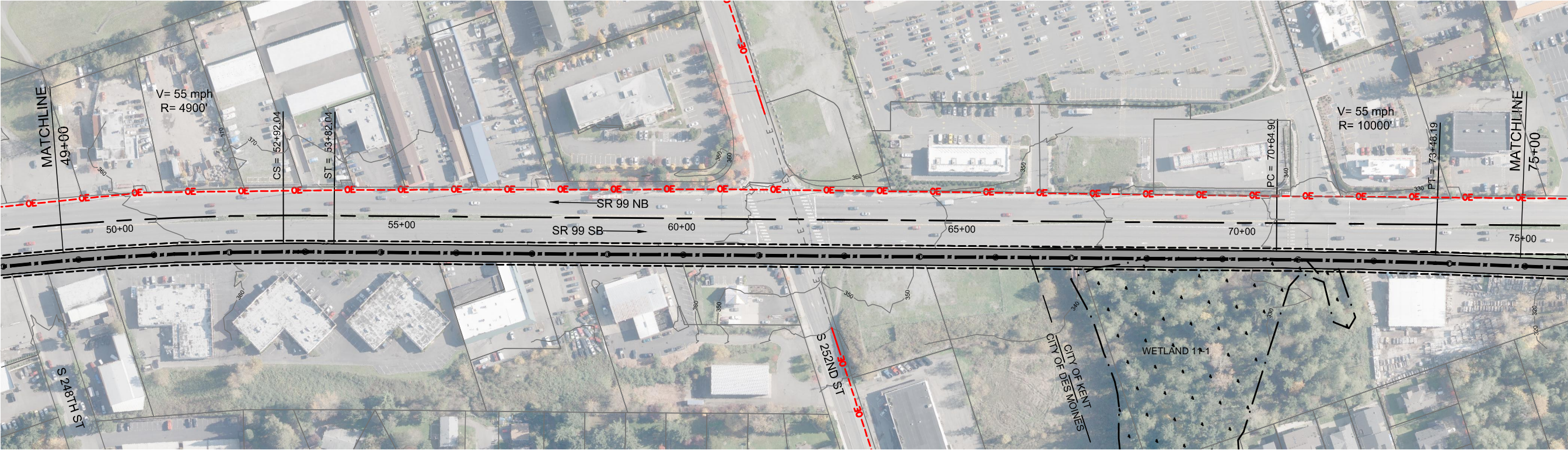


DRAFT EIS - CONCEPTUAL DESIGN
TRACK PLAN AND PROFILE & ROADWAY RECONSTRUCTION
S 260TH WEST STATION OPTION (POTENTIAL ADDITIONAL STATION)
STA 23+00 TO STA 49+00

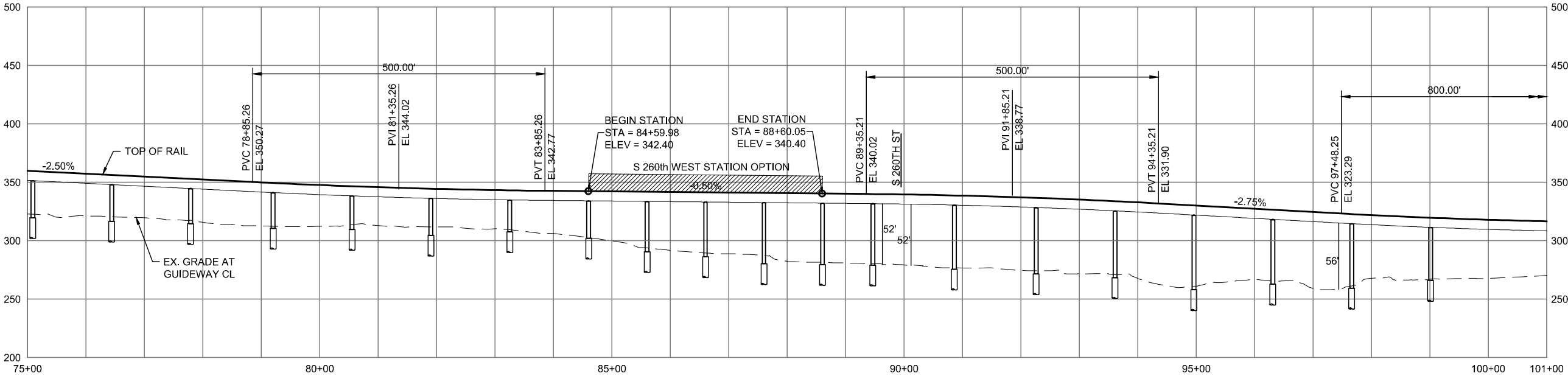
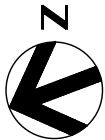
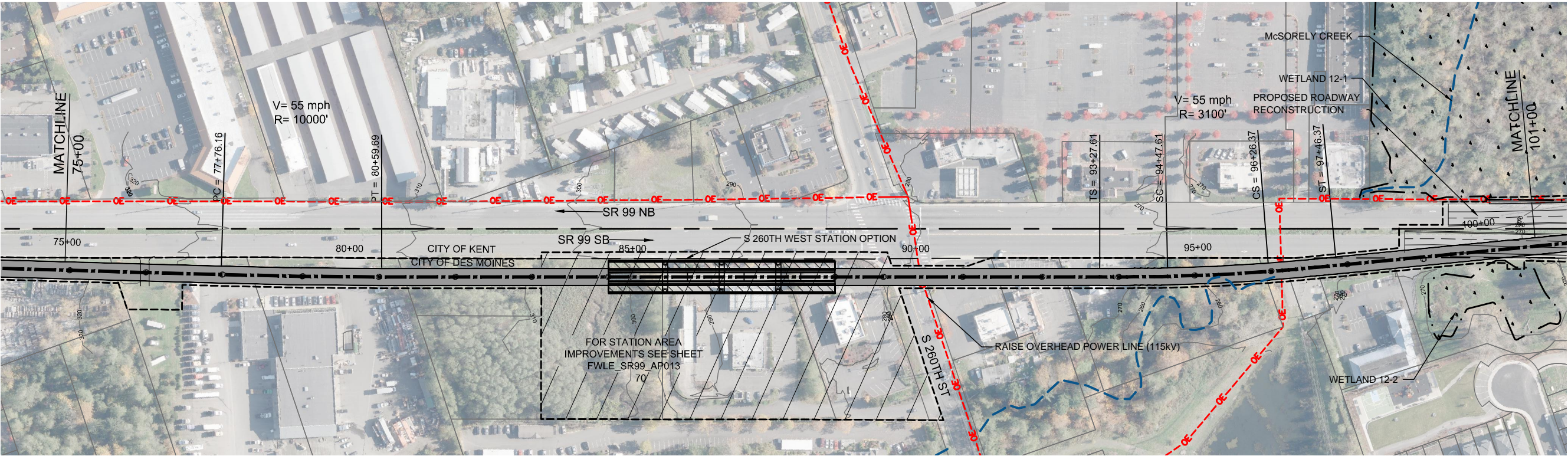
APRIL 2015

SR99-G2-PP06
66

SOUND TRANSIT FEDERAL WAY LINK EXTENSION



SOUND TRANSIT FEDERAL WAY LINK EXTENSION



2/25/2015 10:42:08 AM C:\P\WORKING\SEAD111119_S260TH WEST STATION.DWG CFOX

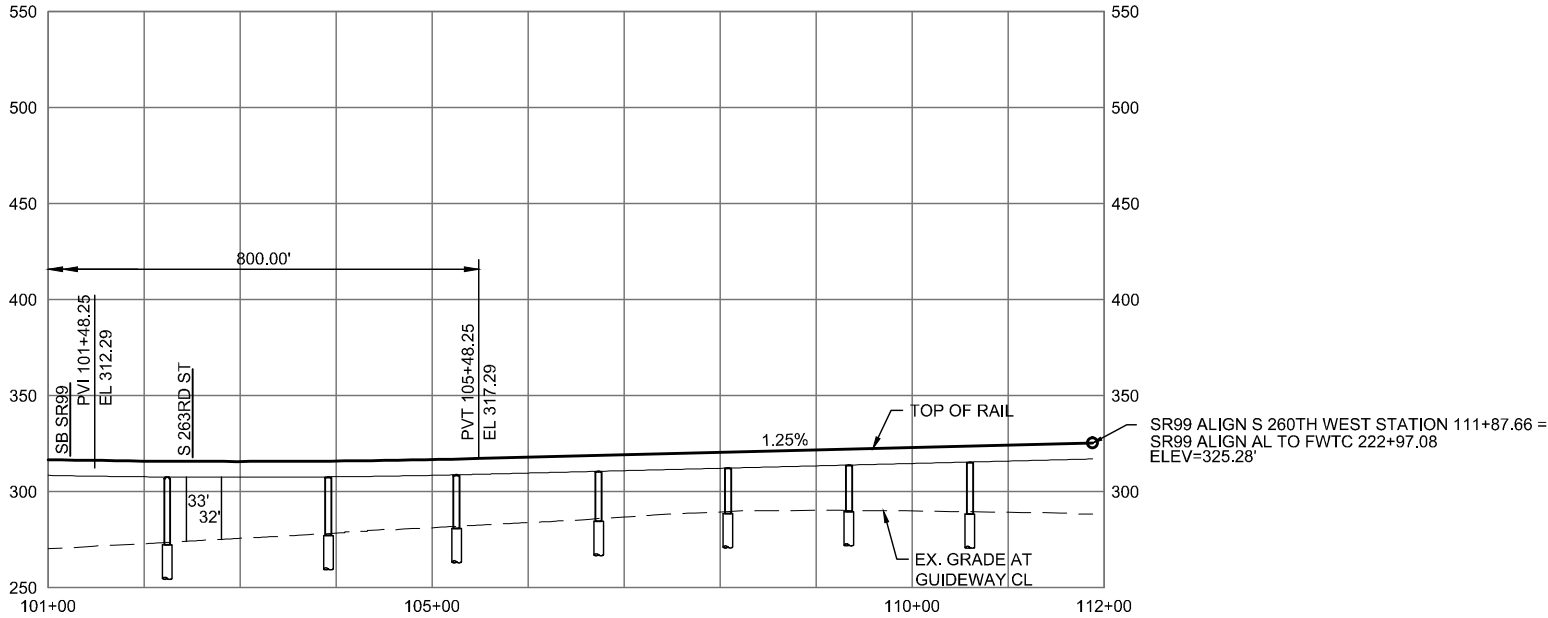
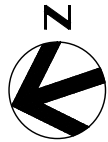
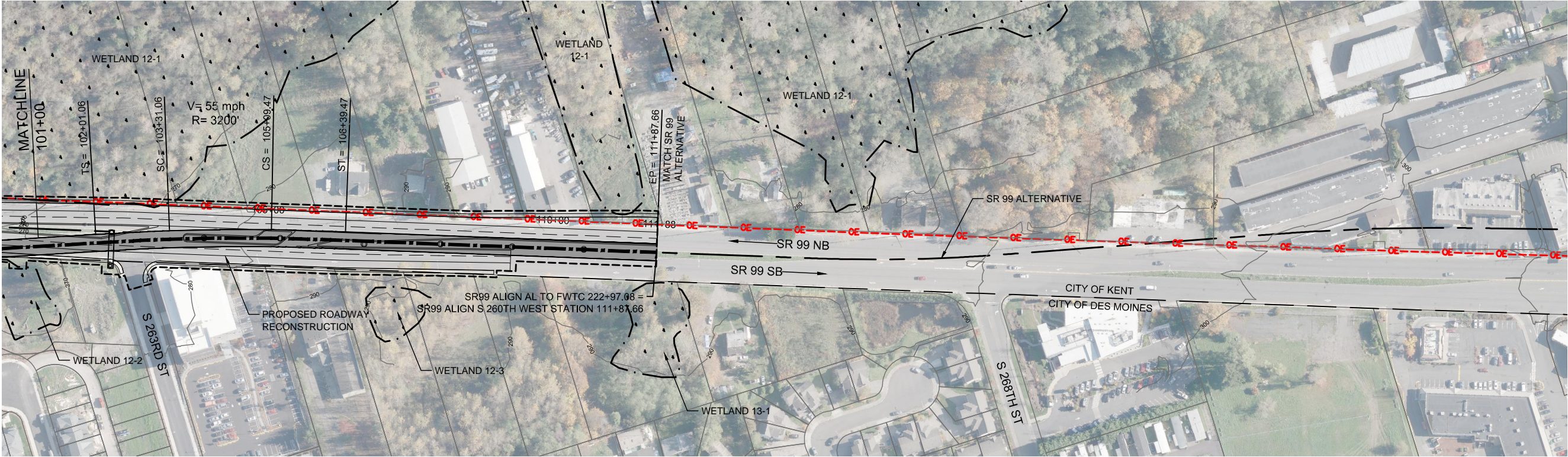


DRAFT EIS - CONCEPTUAL DESIGN
TRACK PLAN AND PROFILE & ROADWAY RECONSTRUCTION
S 260TH WEST STATION OPTION (POTENTIAL ADDITIONAL STATION)
STA 75+00 TO STA 101+00

APRIL 2015

SR99-G4-PP08
68

SOUND TRANSIT FEDERAL WAY LINK EXTENSION

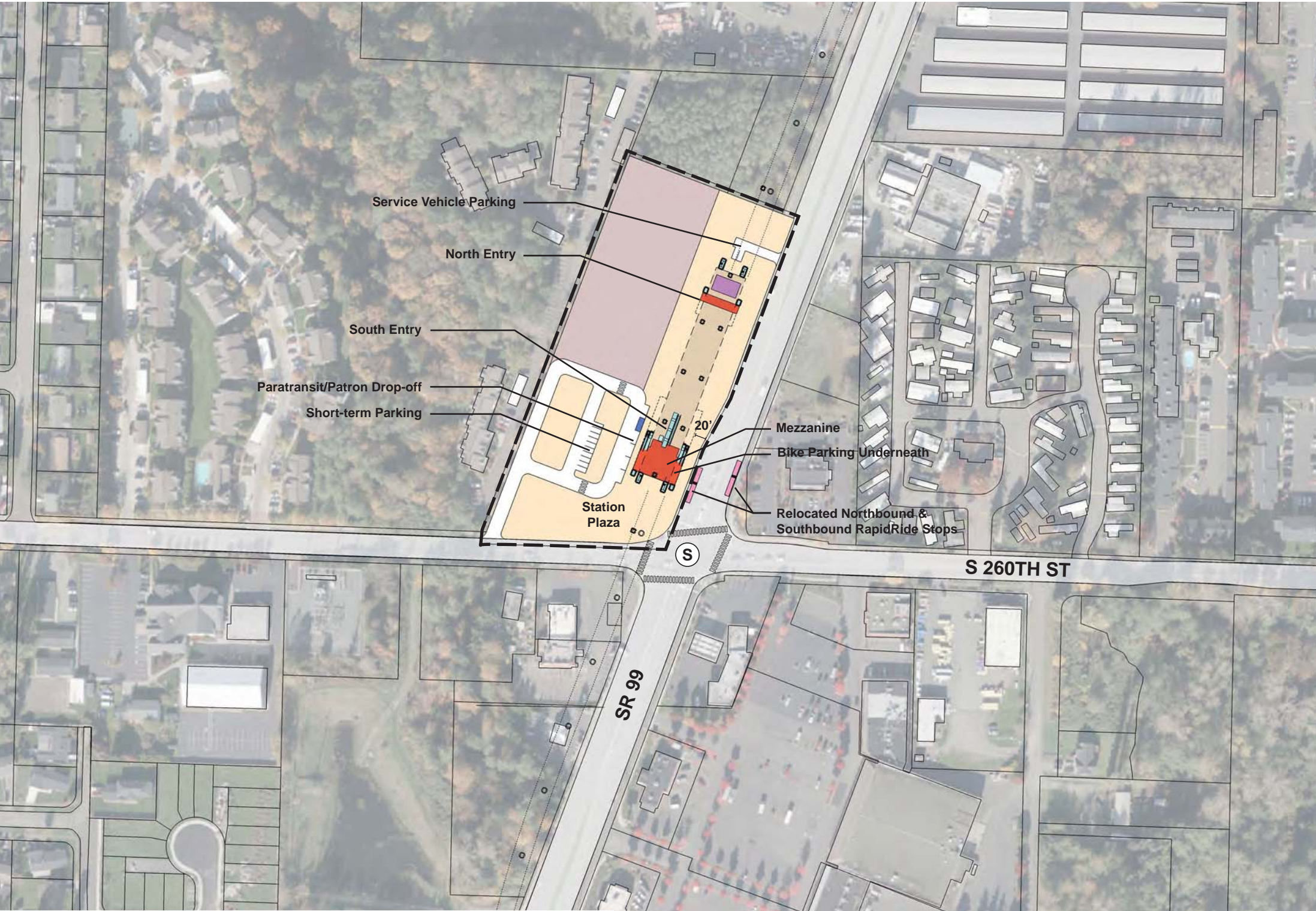


DRAFT EIS - CONCEPTUAL DESIGN
TRACK PLAN AND PROFILE & ROADWAY RECONSTRUCTION
S 260TH WEST STATION OPTION (POTENTIAL ADDITIONAL STATION)
STA 101+00 TO STA 111+87.66

APRIL 2015

SR99-G5-PP09
69

SOUND TRANSIT FEDERAL WAY LINK EXTENSION



- STATION PLAZA

VERTICAL CIRCULATION

TICKETING / ENTRY HALL

PLATFORM

ANCILLARY SPACES

TPSS
- BUS LAYOVER

BUS PICK-UP / DROP OFF

PARATRANSIT

BICYCLE STORAGE

CONSTRUCTION STAGING

- STATION AREA FOOTPRINT
- S

S

SIGNALIZED INTERSECTION (EXISTING)

SIGNALIZED INTERSECTION (PROPOSED)

ASSUMPTIONS:

S 260th West Station Option	
Alternative(s)	SR 99; I-5 to SR 99
Boardings	1,000
Station Configuration	
Terminus / In-Line	In-Line
Station Type	Side Platform - Elevated
Platform Width	14'
Tail track	N/A
Crossover	TBD
TPSS	No
Program	
KC Metro Ancillary Spaces (SF)	N/A
ST Ancillary Spaces (SF)	1,200
Total Ancillary Spaces (SF)	1,200
Vertical Circulation	
# of entrances	2
# of escalators	3
# of staircases (patron)	3
# of elevators	5
# of emergency stairs	4
Bus/ Paratransit Facilities	
Bus bays (KCM)	N/A
Bus bays (ST)	N/A
Rapid Ride	On-street at SR 99
Bus layover (KCM)	N/A
Bus layover (ST)	N/A
Paratransit	1 space
Communications Facility	Tier 1
Parking & Amenities	
Bike storage	900 SF
Patron drop-off	2 spaces
Short-term patron parking	7 to 10 spaces
Staff parking	N/A
Service/emerg. vehicle park.	2 spaces, combined
Signal bungalow / TPSS park.	N/A
Patron parking	N/A



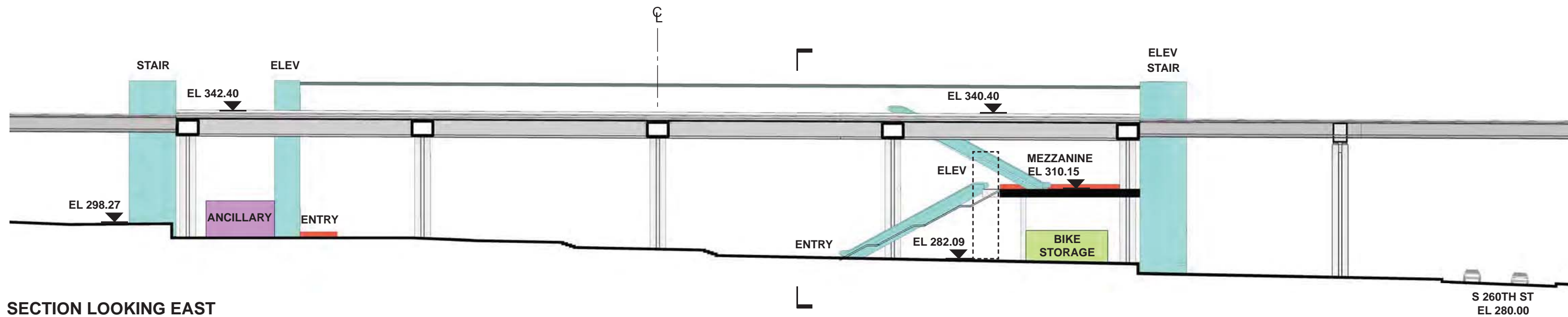
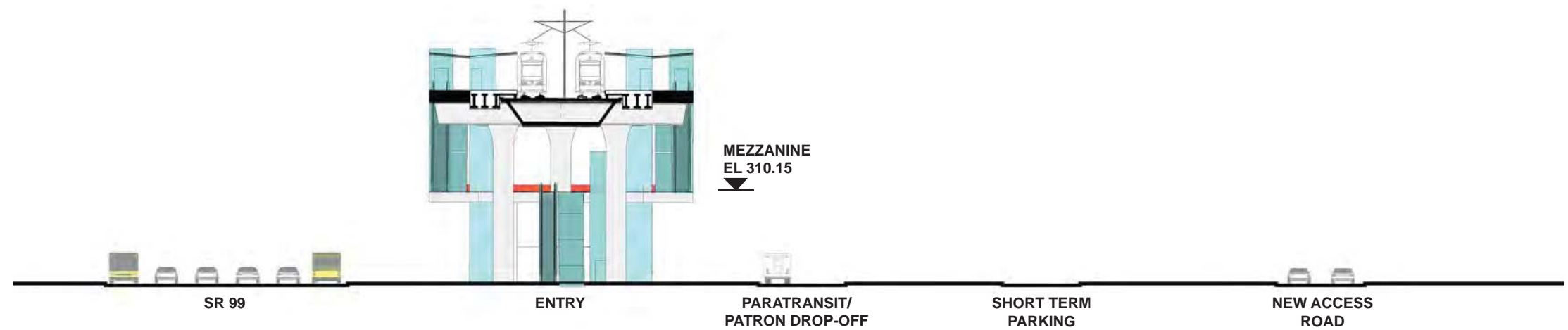
DRAFT EIS - CONCEPTUAL DESIGN
S 260TH WEST STATION OPTION
(POTENTIAL ADDITIONAL STATION)
SITE PLAN



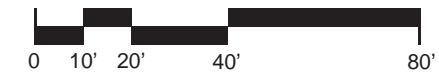
APRIL 2015

FWLE_S99_AP013
70

SOUND TRANSIT FEDERAL WAY LINK EXTENSION



- | | | | |
|--|------------------------|--|------------------------|
| | STATION PLAZA | | BUS LAYOVER |
| | VERTICAL CIRCULATION | | BUS PICK-UP / DROP OFF |
| | TICKETING / ENTRY HALL | | PARATRANSIT |
| | PLATFORM | | BICYCLE STORAGE |
| | ANCILLARY SPACES | | CONSTRUCTION STAGING |
| | TPSS | | |



DRAFT EIS - CONCEPTUAL DESIGN
S 260TH WEST STATION OPTION
(POTENTIAL ADDITIONAL STATION)
SECTIONS

APRIL 2015

FWLE_S99_AX013
71

7/17/2014 11:36:52 AM JHAMMERQUIST G:\BWA PROJECTS\67612 FEDERAL WAY TRANSIT EXTENSION\2 CLIENT\2 DATA\INCOMING HDR\40717 UPDATED TITLEBLOCK\DES_TTLB\K.DWG

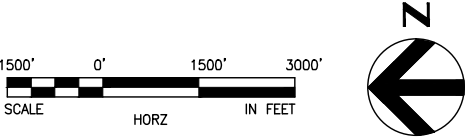


SOUND TRANSIT FEDERAL WAY LINK EXTENSION



SR99 SHEET LAYOUT MATRIX																
	1	2	3	4	5	6	7	8	9	10	11	12	13	14	15	16
A - SR 99 ALTERNATIVE	X	X	X	X	X	X	X	X	X	X	X	X	X	X	X	X
B - S 216TH WEST STATION OPTION (POTENTIAL ADDITIONAL STATION)	X	X	X													
C - S 216TH EAST STATION OPTION (POTENTIAL ADDITIONAL STATION)		X	X													
D - KENT/DES MOINES SR 99 MEDIAN STATION OPTION				X	X	X										
E - KENT/DES MOINES SR 99 EAST STATION OPTION				X	X	X	X									
F - KENT/DES MOINES HC CAMPUS STATION OPTION			X	X	X	X	X									
F - KDM HC CAMPUS OPTION FROM S 216TH WEST STATION OPTION						X	X	X	X	X						
G - S 260TH WEST STATION OPTION (POTENTIAL ADDITIONAL STATION)					X	X	X	X	X							
H - S 260TH EAST STATION OPTION (POTENTIAL ADDITIONAL STATION)							X	X	X	X						
J - S 272ND REDONDO TRENCH STATION OPTION							X	X	X	X	X	X	X			
K - FEDERAL WAY SR 99 STATION OPTION															X	X

I - NOT USED



2/25/2015 9:20:50 AM
C:\P\WORKING\SEAD\11417\SR99-A00-GX02.DWG



DRAFT EIS - CONCEPTUAL DESIGN
S 260TH EAST STATION OPTION (POTENTIAL ADDITIONAL STATION)
SHEET INDEX KEYMAP

APRIL 2015

SR99-H00-GX02
72