

Federal Way Link Extension

Draft Environmental Impact Statement

CONCEPTUAL DESIGN DRAWINGS

Appendix F



Contents

SR 99 Alternative: pp. 1-25

- S 216th West Station Option: pp. 26-31
- S 216th East Station Option: pp. 32-36
- Kent/Des Moines SR 99 Median Station Option: pp. 37-42
- Kent/Des Moines SR 99 East Station Option: pp. 43-49
- Kent/Des Moines HC Campus Station Option: pp. 50-57
- Kent/Des Moines HC Campus Station Option from S 216th West Station Option: pp. 58-63
- S 260th West Station Option: pp. 64-71
- S 260th East Station Option: pp. 72-78
- S 272nd Redondo Trench Station Option: pp. 79-88
- Federal Way SR 99 Station Option: pp. 89-93

I-5 Alternative: pp. 94-118

- Kent/Des Moines At-Grade Station Option: pp. 119-124
- Kent/Des Moines SR 99 East Station Option: pp. 125-130
- Landfill Median Alignment Option: pp.131-134
- Federal Way I-5 Station Option: pp. 135-138
- Federal Way S 320th Park-and-Ride Station Option: pp. 139-143

SR 99 to I-5 Alternative: pp. 144-151

I-5 to SR 99 Alternative: pp. 152-160

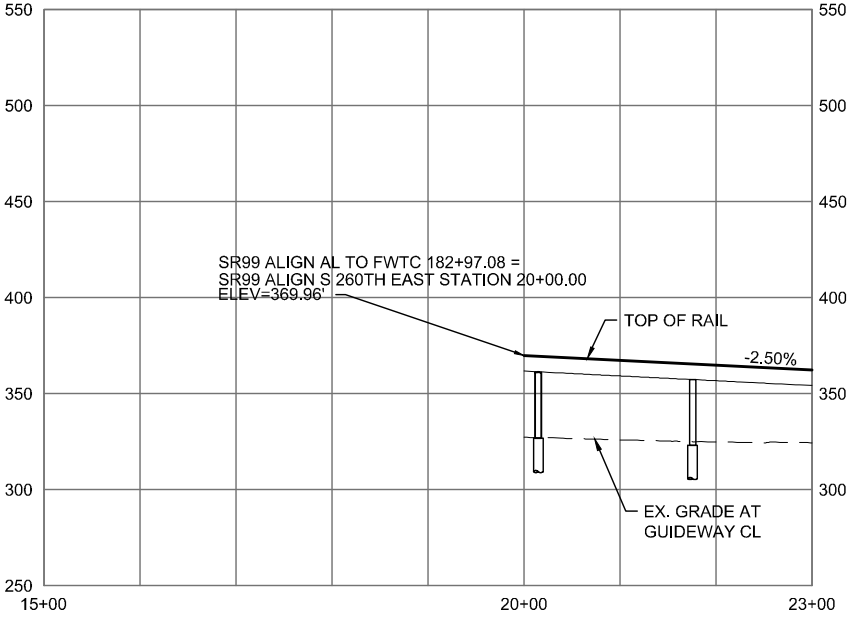
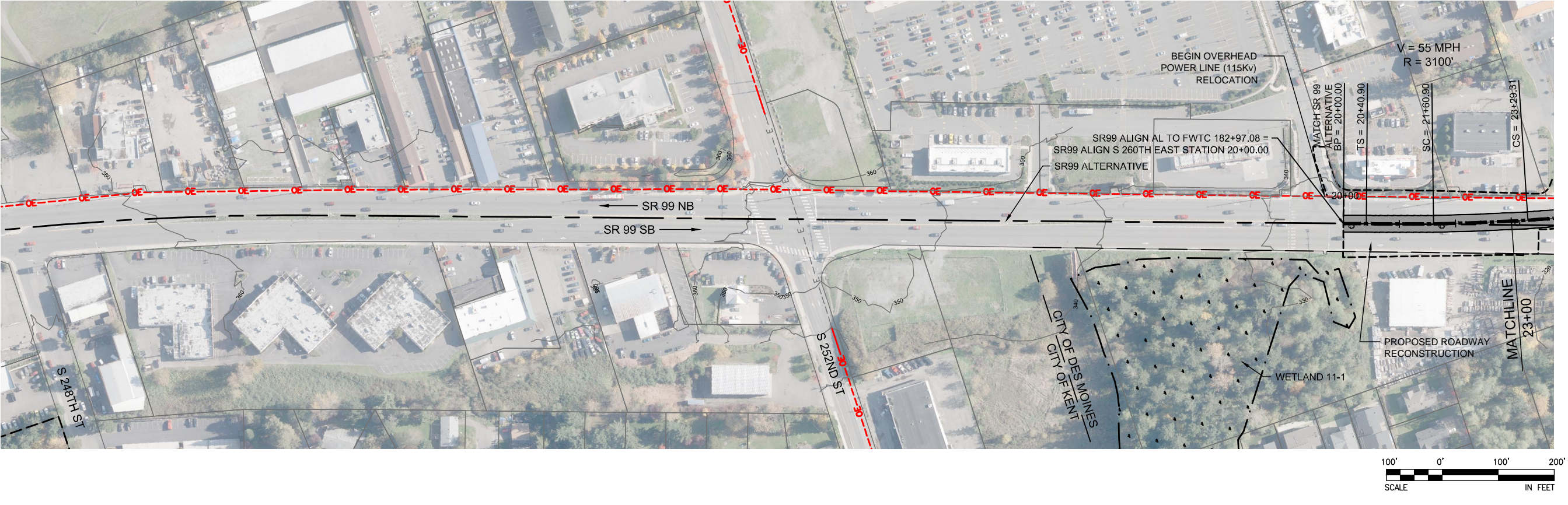
- S 260th West Station Option: pp. 161-163

This page intentionally left blank.

DRAFT EIS - CONCEPTUAL DESIGN SR 99 ALTERNATIVE

This page intentionally left blank.

SOUND TRANSIT FEDERAL WAY LINK EXTENSION



2/25/2015 10:48:34 AM C:\P\WORKING\SEAD\11119H_S260TH_EAST_STATION.DWG CFOX

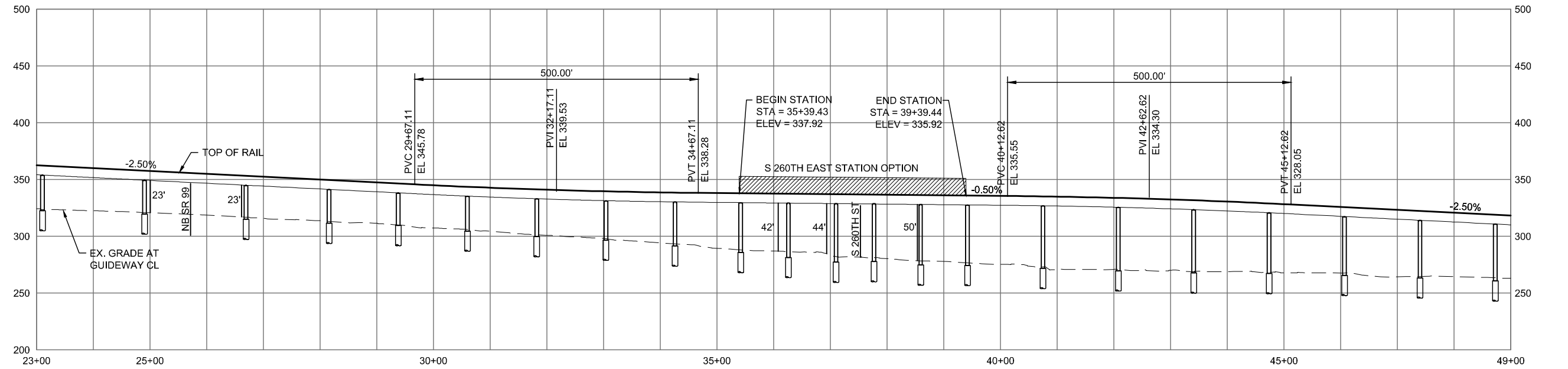
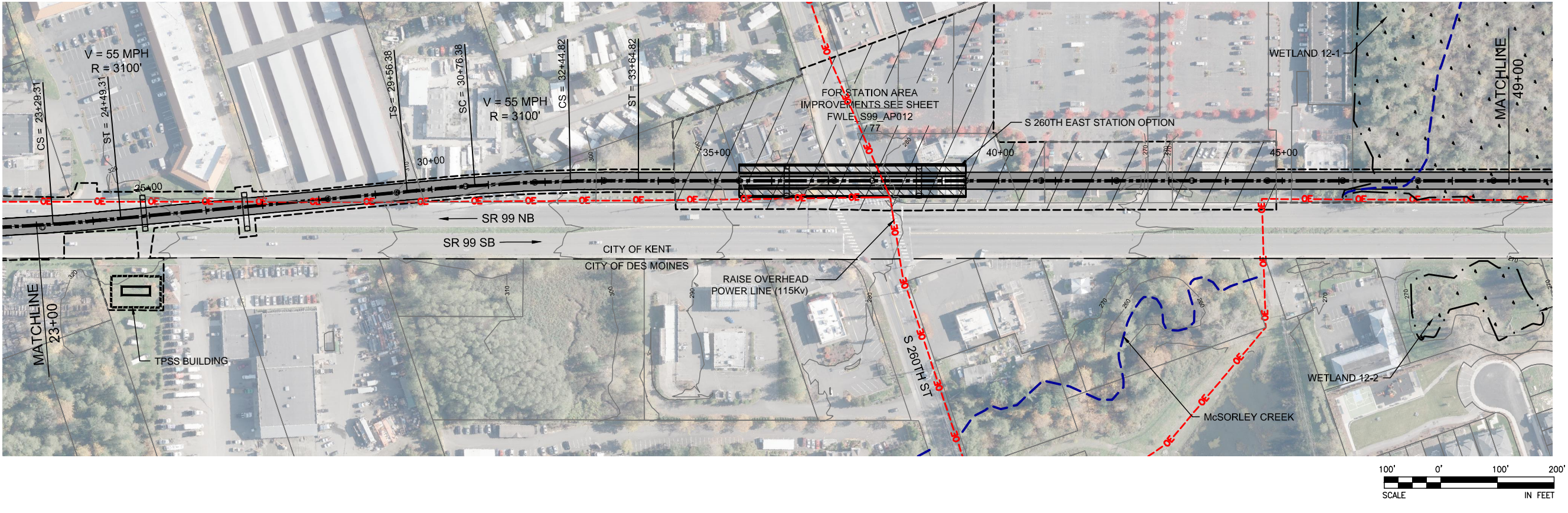


DRAFT EIS - CONCEPTUAL DESIGN
TRACK PLAN & PROFILE AND ROADWAY RECONSTRUCTION
S 260TH EAST STATION OPTION (POTENTIAL ADDITIONAL STATION)
STA 20+00 TO STA 23+00

APRIL 2015

SR99-H1-PP07
73

SOUND TRANSIT FEDERAL WAY LINK EXTENSION



2/25/2015 10:48:44 AM C:\WORKING\SEAD11\119H_S260TH EAST STATION.DWG C:\FOX

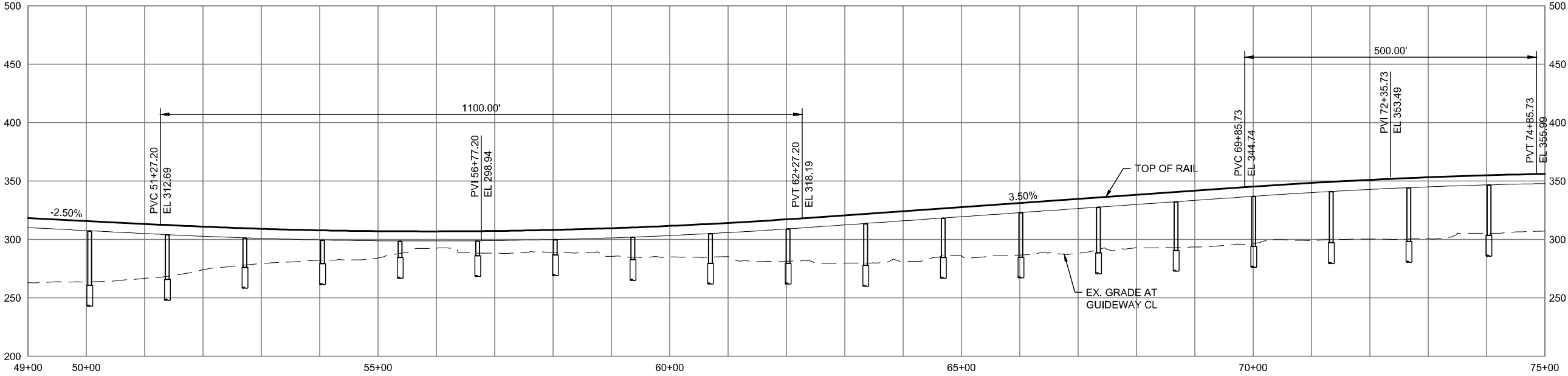
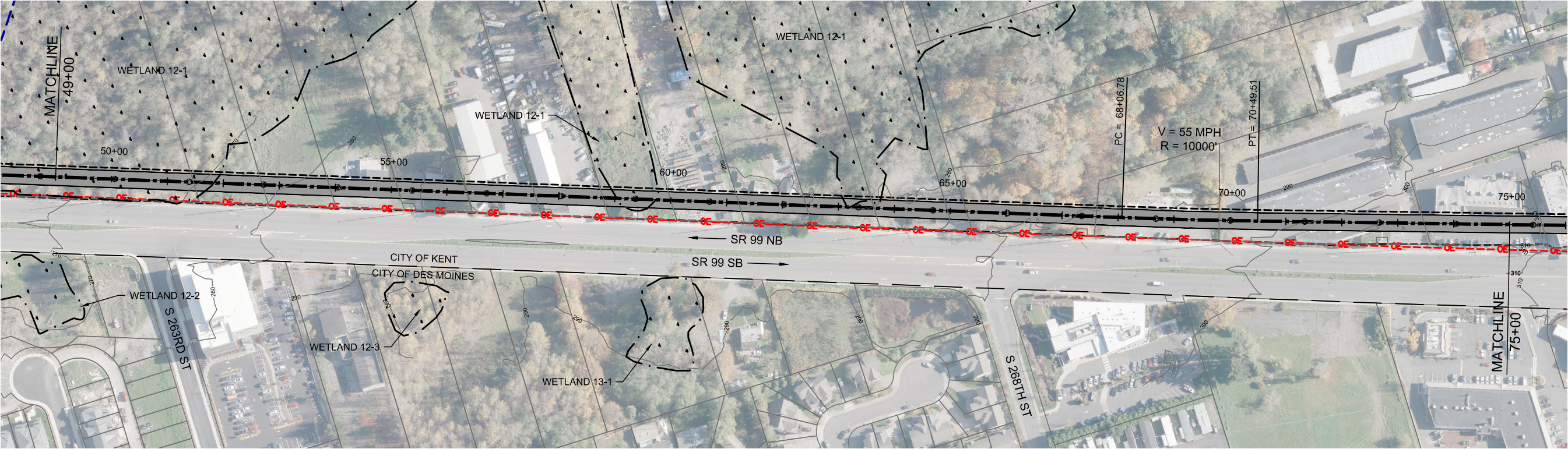


DRAFT EIS - CONCEPTUAL DESIGN
TRACK PLAN & PROFILE AND ROADWAY RECONSTRUCTION
S 260TH EAST STATION OPTION (POTENTIAL ADDITIONAL STATION)
STA 23+00 TO STA 49+00

APRIL 2015

SR99-H2-PP08
74

SOUND TRANSIT FEDERAL WAY LINK EXTENSION



2/25/2015 10:48:53 AM C:\WORKING\SEAD\1141194 S260TH EAST STATION.DWG CFOX

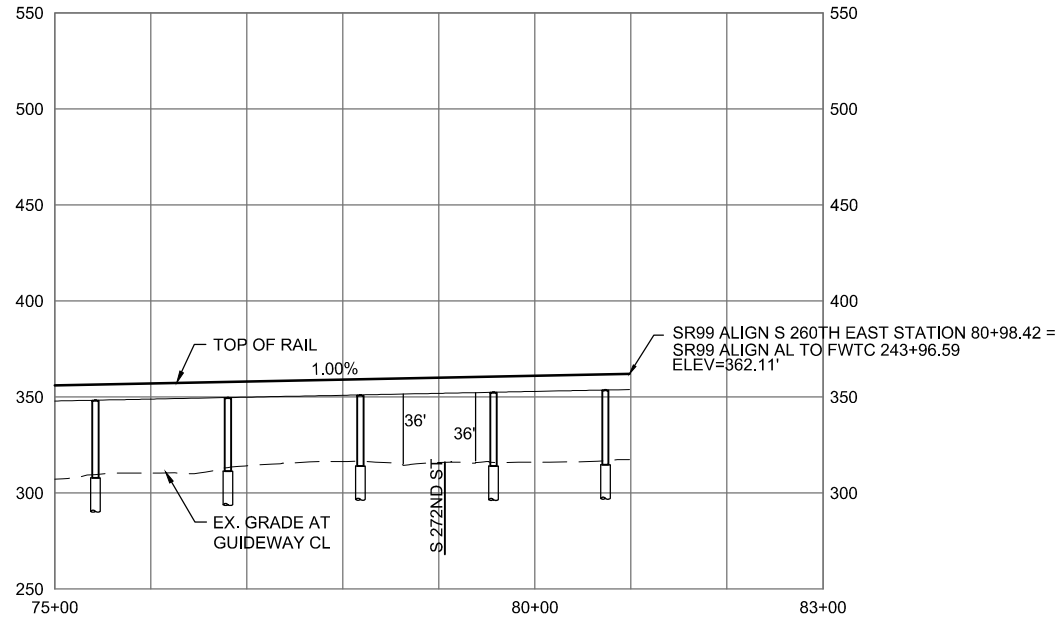


DRAFT EIS - CONCEPTUAL DESIGN
TRACK PLAN & PROFILE AND ROADWAY RECONSTRUCTION
S 260TH EAST STATION OPTION (POTENTIAL ADDITIONAL STATION)
STA 49+00 TO STA 75+00

APRIL 2015

SR99-H3-PP09
75

SOUND TRANSIT FEDERAL WAY LINK EXTENSION



SOUND TRANSIT FEDERAL WAY LINK EXTENSION



- STATION PLAZA

VERTICAL CIRCULATION

TICKETING / ENTRY HALL

PLATFORM

ANCILLARY SPACES

TPSS
- BUS LAYOVER

BUS PICK-UP / DROP OFF

PARATRANSIT

BICYCLE STORAGE

CONSTRUCTION STAGING

- STATION AREA FOOTPRINT

S

SIGNALIZED INTERSECTION (EXISTING)

S

SIGNALIZED INTERSECTION (PROPOSED)

ASSUMPTIONS:

S 260th East Station Option	
Alternative(s)	SR 99; I-5 to SR 99
Boardings	1,000
Station Configuration	
Terminus / In-Line	In-Line
Station Type	Side Platform - Elevated
Platform Width	14'
Tail track	N/A
Crossover	TBD
TPSS	No
Program	
KC Metro Ancillary Spaces (SF)	N/A
ST Ancillary Spaces (SF)	1,200
Total Ancillary Spaces (SF)	1,200
Vertical Circulation	
# of entrances	2
# of escalators	6
# of staircases (patron)	6
# of elevators	6
# of emergency stairs	4
Bus/ Paratransit Facilities	
Bus bays (KCM)	N/A
Bus bays (ST)	N/A
Rapid Ride	On-street at SR 99
Bus layover (KCM)	N/A
Bus layover (ST)	N/A
Paratransit	1 space
Communications Facility	Tier 1
Parking & Amenities	
Bike storage	900 SF
Patron drop-off	2 spaces
Short-term patron parking	7 to 10 spaces
Staff parking	N/A
Service/emerg. vehicle park.	2 spaces, combined
Signal bungalow / TPSS park.	N/A
Patron parking	N/A

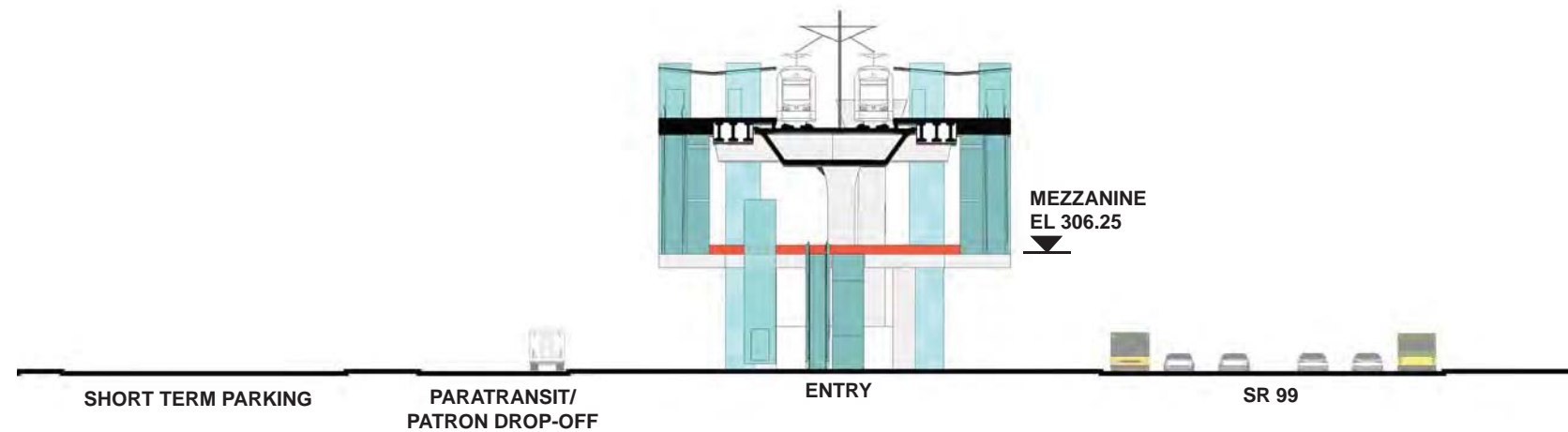
DRAFT EIS - CONCEPTUAL DESIGN
S 260TH EAST STATION OPTION
(POTENTIAL ADDITIONAL STATION)
SITE PLAN



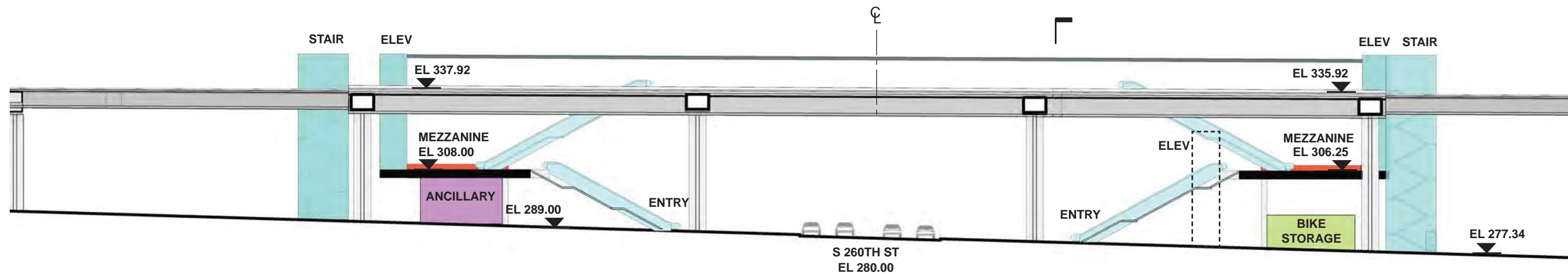
APRIL 2015

FWLE_S99_AP012

SOUND TRANSIT FEDERAL WAY LINK EXTENSION

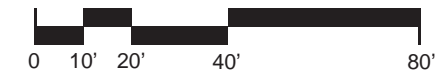


SECTION LOOKING SOUTH



SECTION LOOKING EAST

- | | |
|------------------------|------------------------|
| STATION PLAZA | BUS LAYOVER |
| VERTICAL CIRCULATION | BUS PICK-UP / DROP OFF |
| TICKETING / ENTRY HALL | PARATRANSIT |
| PLATFORM | BICYCLE STORAGE |
| ANCILLARY SPACES | CONSTRUCTION STAGING |
| TPSS | |



DRAFT EIS - CONCEPTUAL DESIGN
S 260TH EAST STATION OPTION
(POTENTIAL ADDITIONAL STATION)
SECTIONS

APRIL 2015

FWLE_S99_AX012
78

7/17/2014 11:36:52 AM JHAMMERQUIST G:\BIM\PROJECTS\67612\FEDERAL WAY TRANSIT EXTENSION\2 CLIENT\2 DATA\INCOMING HDR\40717 UPDATED TITLEBLOCK.DWG

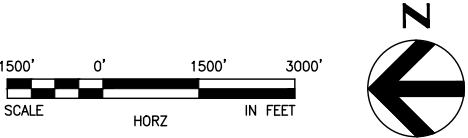


SOUND TRANSIT FEDERAL WAY LINK EXTENSION



SR99 SHEET LAYOUT MATRIX																
	1	2	3	4	5	6	7	8	9	10	11	12	13	14	15	16
A - SR 99 ALTERNATIVE	X	X	X	X	X	X	X	X	X	X	X	X	X	X	X	X
B - S 216TH WEST STATION OPTION (POTENTIAL ADDITIONAL STATION)	X	X	X													
C - S 216TH EAST STATION OPTION (POTENTIAL ADDITIONAL STATION)		X	X													
D - KENT/DES MOINES SR 99 MEDIAN STATION OPTION				X	X	X										
E - KENT/DES MOINES SR 99 EAST STATION OPTION				X	X	X	X									
F - KENT/DES MOINES HC CAMPUS STATION OPTION			X	X	X	X	X									
F - KDM HC CAMPUS OPTION FROM S 216TH WEST STATION OPTION						X	X	X	X	X						
G - S 260TH WEST STATION OPTION (POTENTIAL ADDITIONAL STATION)					X	X	X	X	X							
H - S 260TH EAST STATION OPTION (POTENTIAL ADDITIONAL STATION)							X	X	X	X						
J - S 272ND REDONDO TRENCH STATION OPTION								X	X	X	X	X	X	X		
K - FEDERAL WAY SR 99 STATION OPTION															X	X

I - NOT USED



2/25/2015 9:20:53 AM
C:\P\WORKING\SEAD114117SR99-A06-GX02.DWG
CFOX

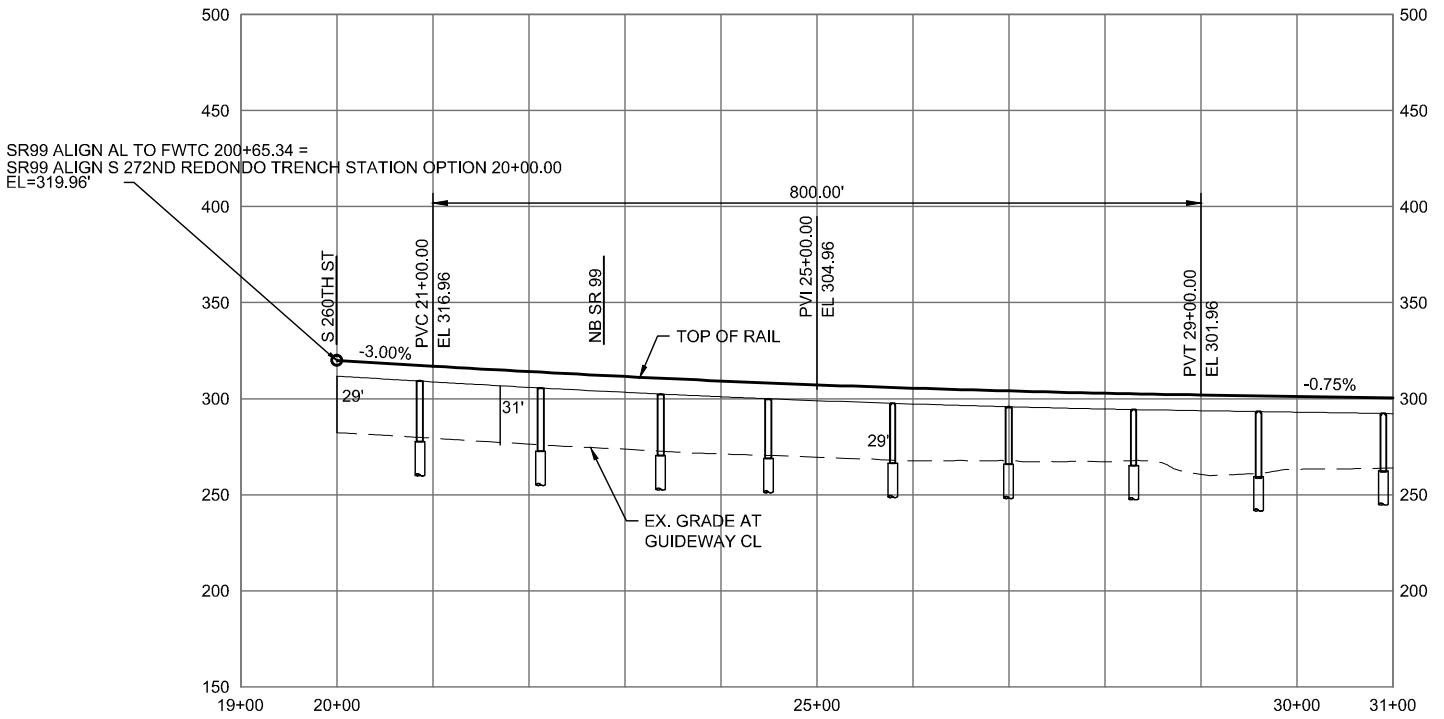
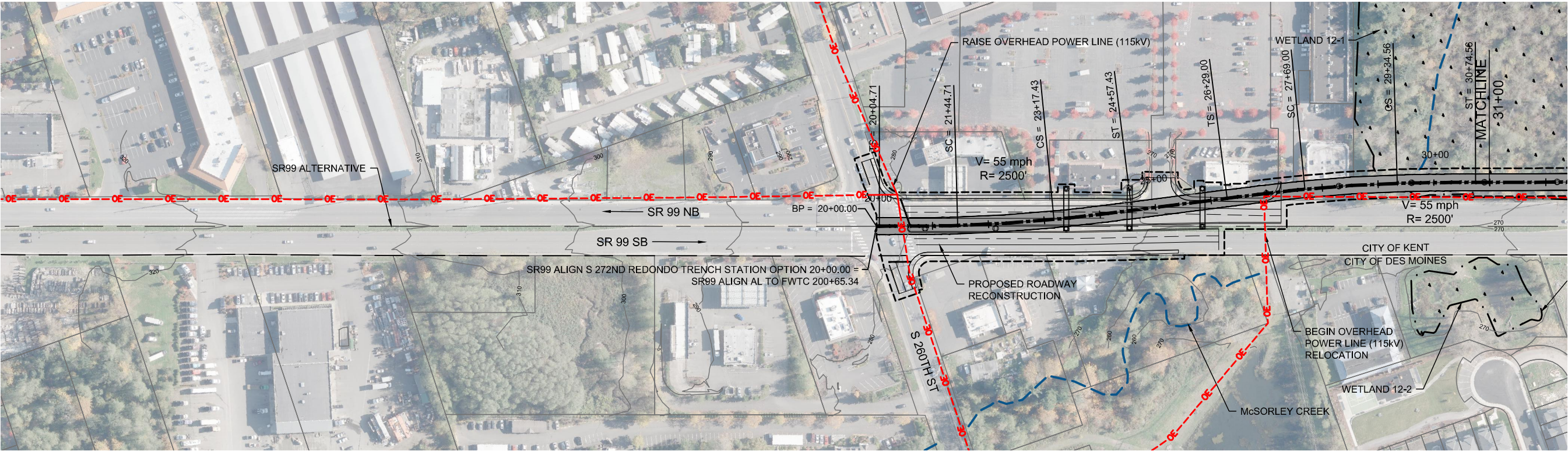


DRAFT EIS - CONCEPTUAL DESIGN
S 272ND REDONDO TRENCH STATION OPTION
SHEET INDEX KEYMAP

APRIL 2015

SR99-J00-GX02
79

SOUND TRANSIT FEDERAL WAY LINK EXTENSION



DRAFT EIS - CONCEPTUAL DESIGN
TRACK PLAN AND PROFILE
S 272ND REDONDO TRENCH STATION OPTION
STA 20+00 TO STA 31+00

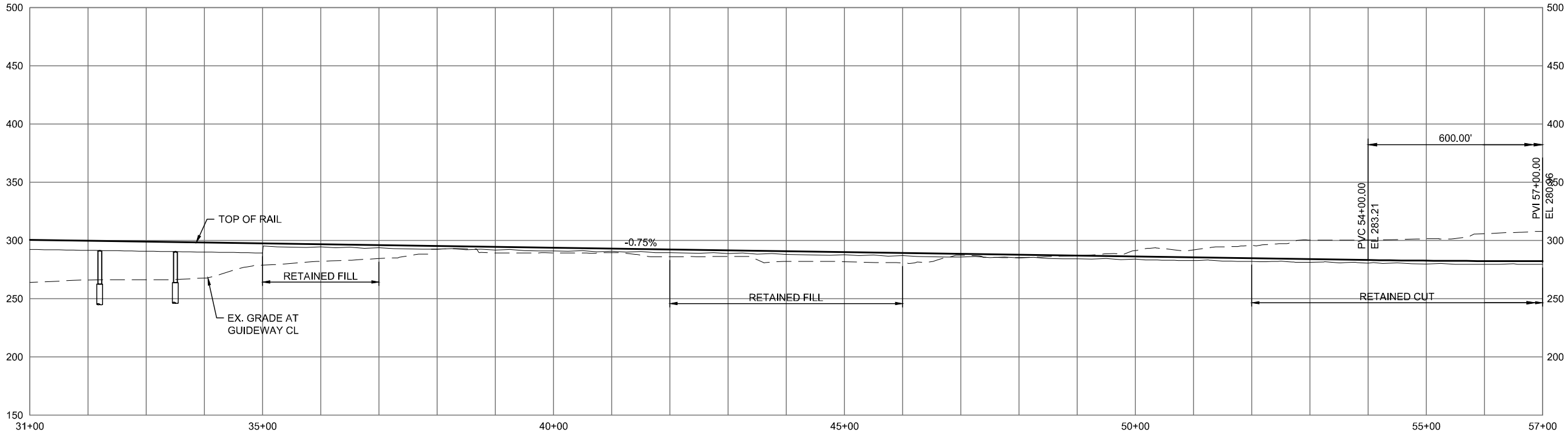
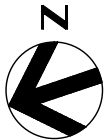
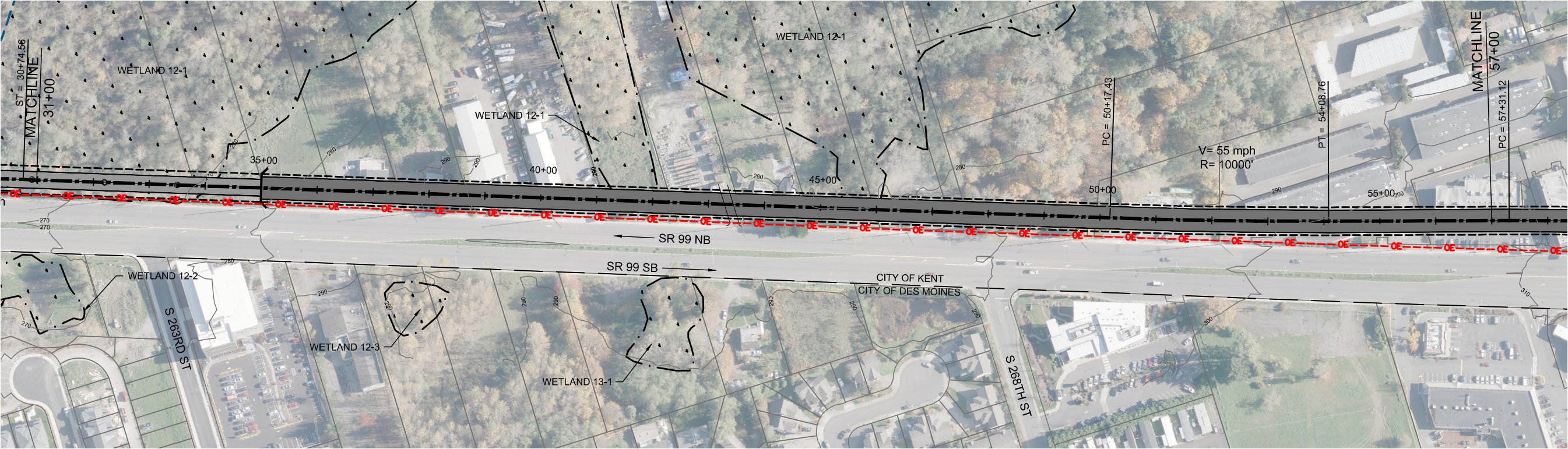
APRIL 2015

SR99-J1-PP08
80

2/25/2015 10:59:35 AM C:\P\WORKING\SEAD\114119\ 272ND TRENCH OPTION.DWG C:\FOX



SOUND TRANSIT FEDERAL WAY LINK EXTENSION



2/25/2015 10:59:49 AM
C:\WORKING\SEAD\1141191_272ND TRENCH OPTION.DWG

CFOX

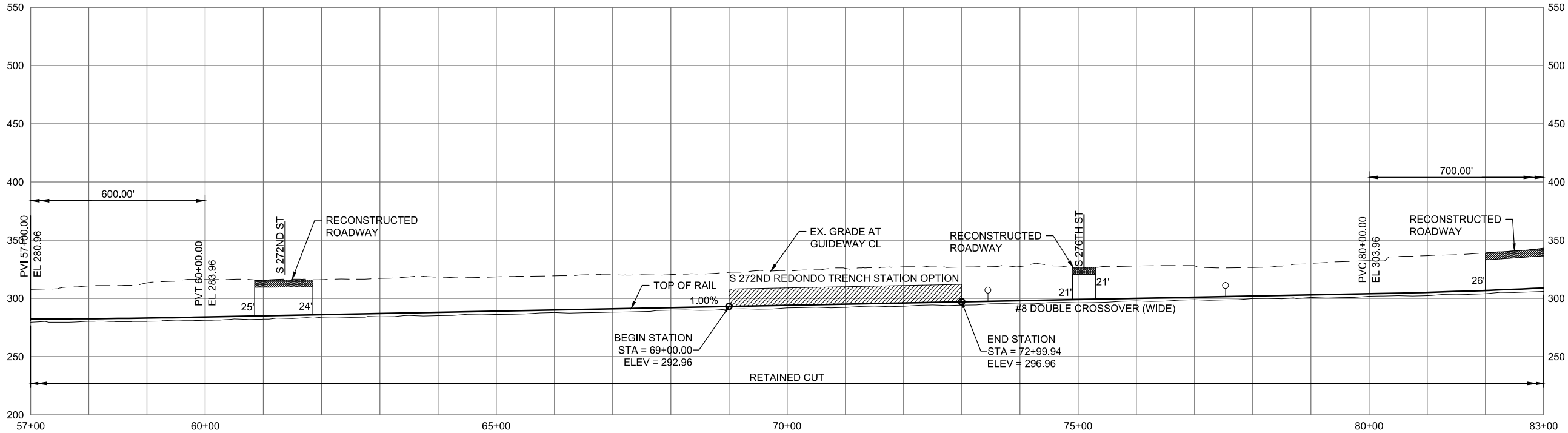
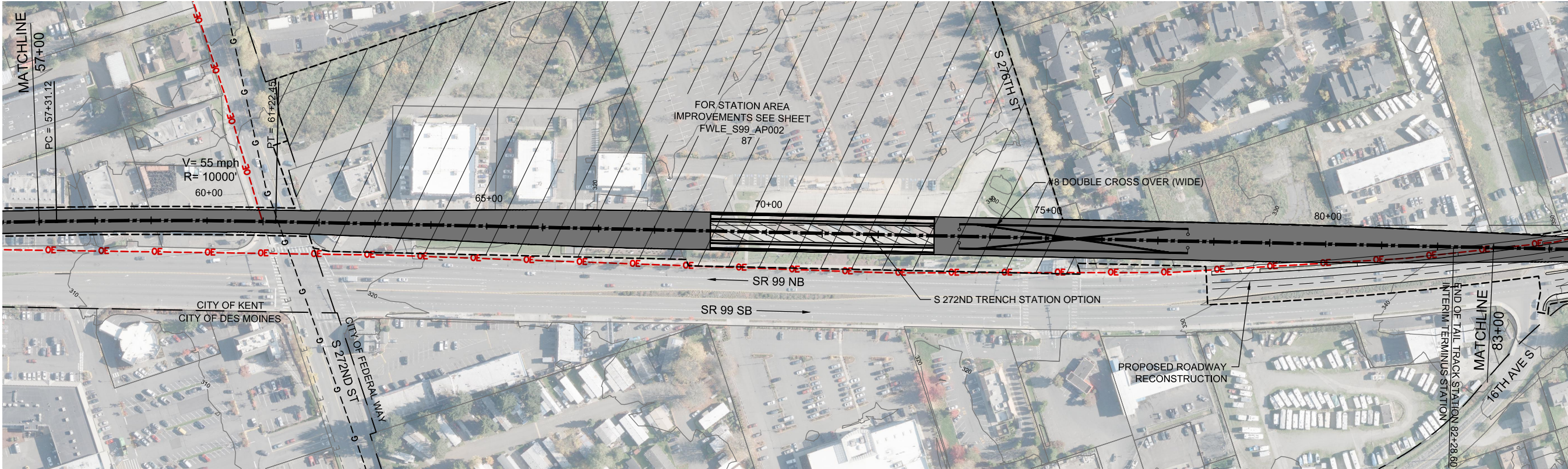


DRAFT EIS - CONCEPTUAL DESIGN
TRACK PLAN AND PROFILE
S 272ND REDONDO TRENCH STATION OPTION
STA 31+00 TO STA 57+00

APRIL 2015

SR99-J2-PP09
81

SOUND TRANSIT FEDERAL WAY LINK EXTENSION



2/27/2015 12:24:49 PM C:\WORKING\SEAD111419\ S 272ND TRENCH OPTION.DWG C:\FOX

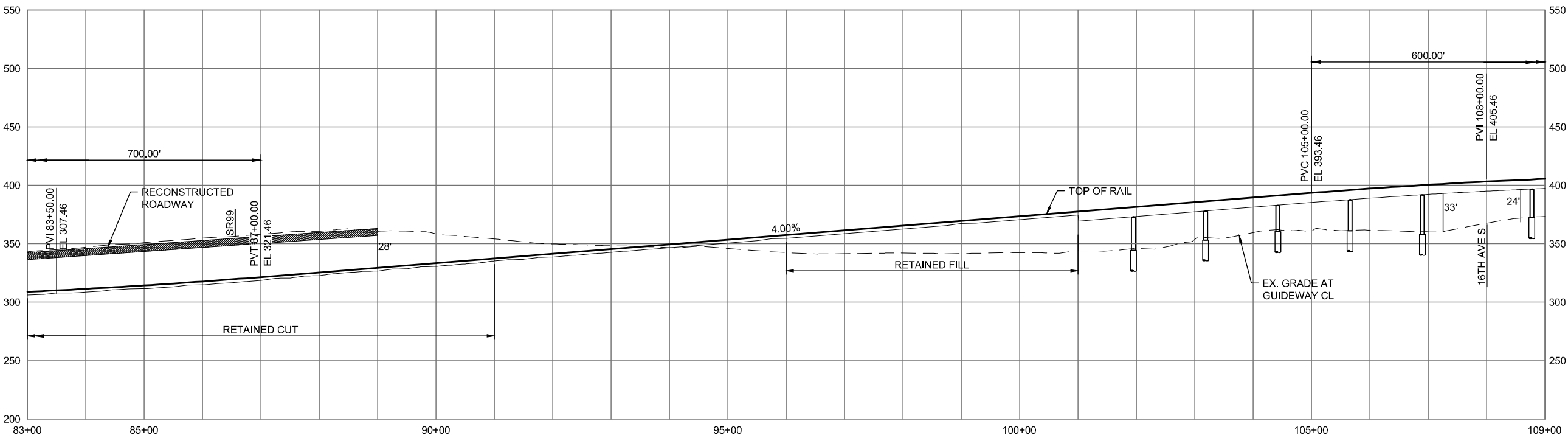
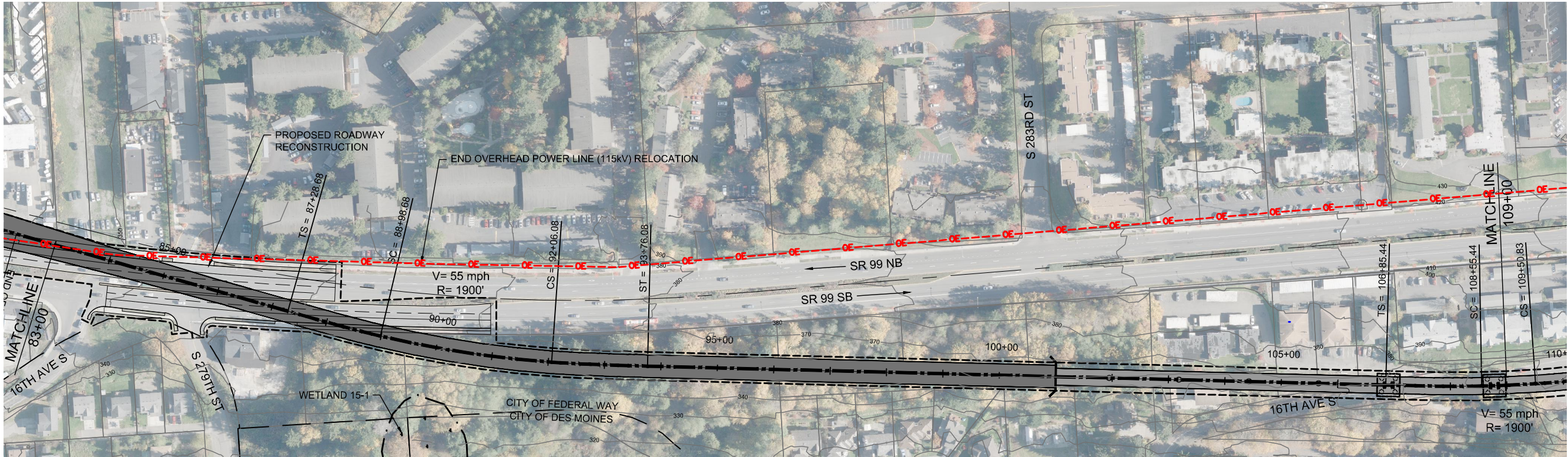


DRAFT EIS - CONCEPTUAL DESIGN
TRACK PLAN AND PROFILE
S 272ND REDONDO TRENCH STATION OPTION
STA 57+00 TO STA 83+00

APRIL 2015

SR99-J3-PP10
82

SOUND TRANSIT FEDERAL WAY LINK EXTENSION



2/25/2015 11:00:16 AM C:\WORKING\SEAD\1141191_272ND TRENCH OPTION.DWG C:\OX

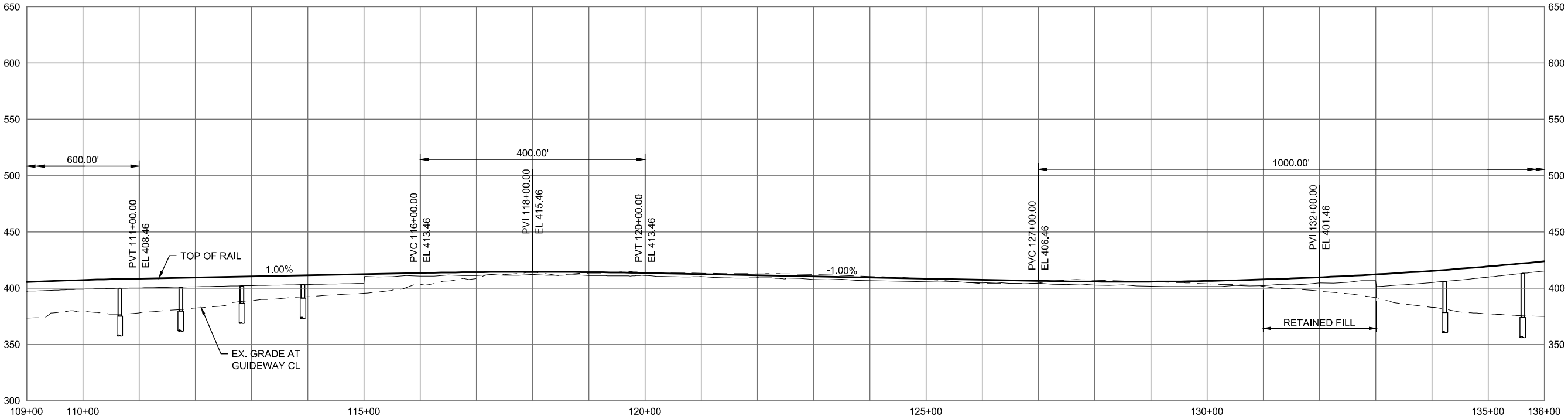
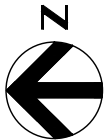
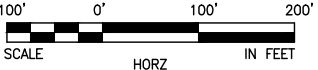
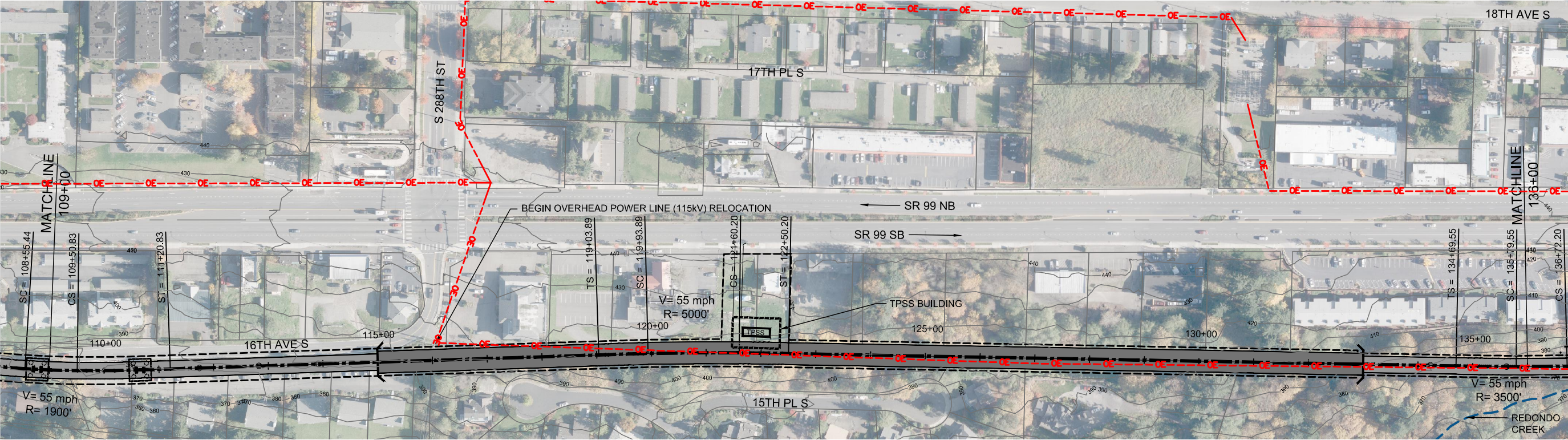


DRAFT EIS - CONCEPTUAL DESIGN
TRACK PLAN AND PROFILE
S 272ND REDONDO TRENCH STATION OPTION
STA 83+00 TO STA 109+00

APRIL 2015

SR99-J4-PP11
83

SOUND TRANSIT FEDERAL WAY LINK EXTENSION



2/25/2015 11:00:28 AM
C:\P\WORKING\SEAD\1141191_272ND TRENCH OPTION.DWG

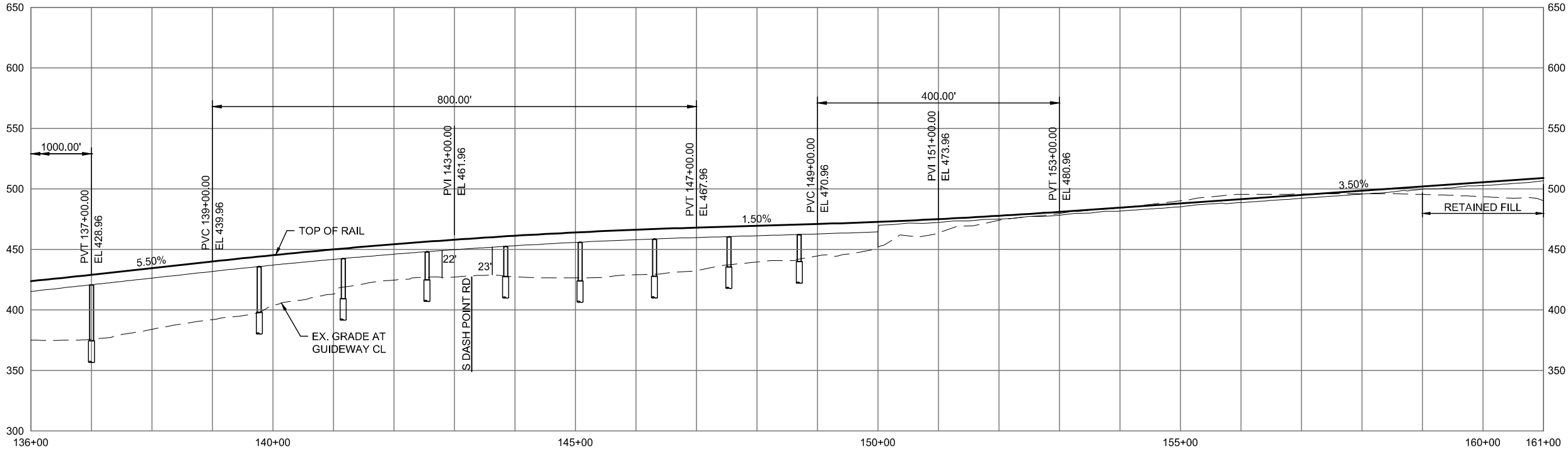
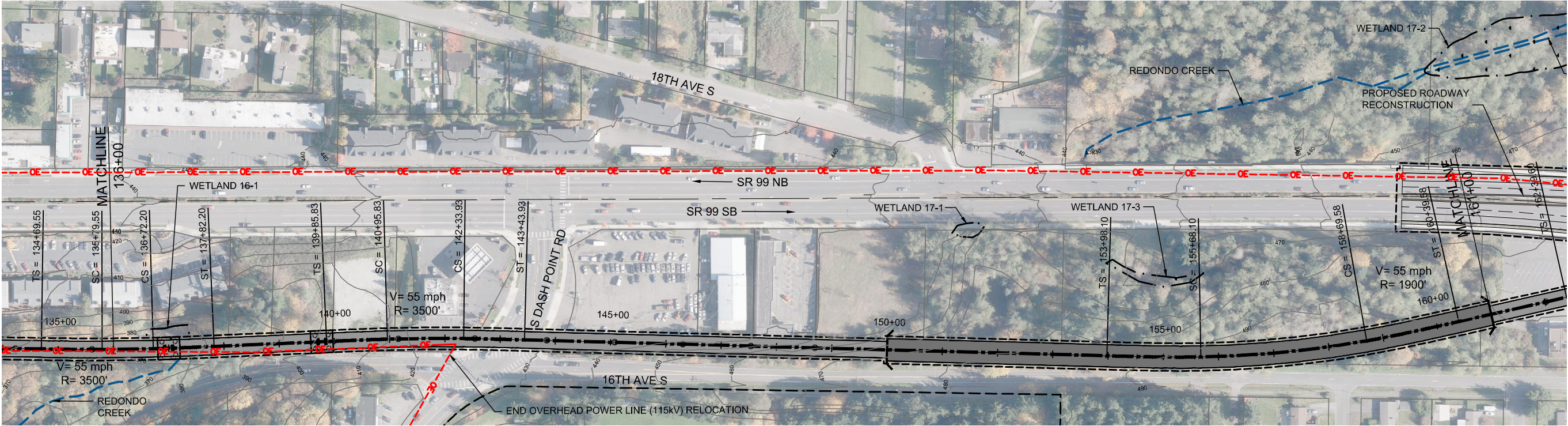


DRAFT EIS - CONCEPTUAL DESIGN
TRACK PLAN AND PROFILE
S 272ND REDONDO TRENCH STATION OPTION
STA 109+00 TO STA 136+00

APRIL 2015

SR99-J5-PP12
84

SOUND TRANSIT FEDERAL WAY LINK EXTENSION



2/25/2015 11:00:40 AM C:\PWORKING\SEAD1141191_272ND TRENCH OPTION.DWG CFOX

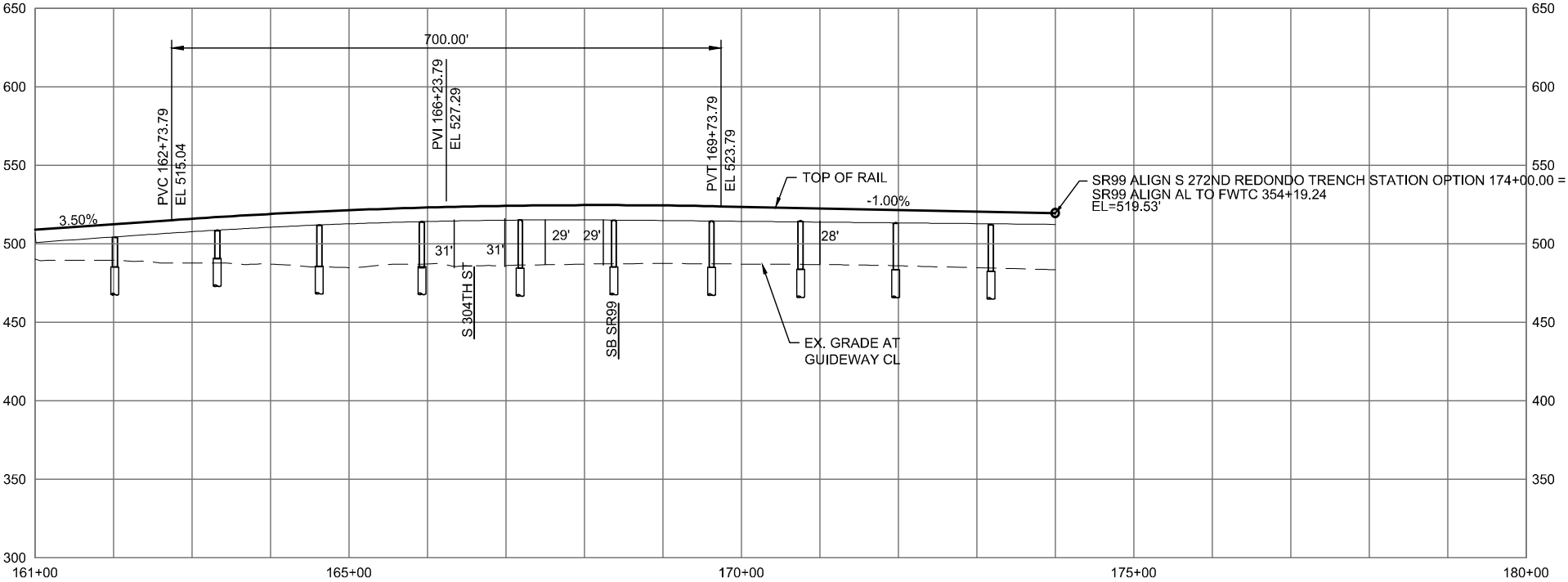
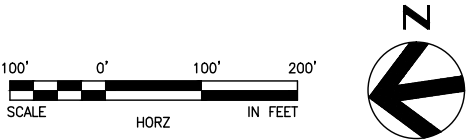
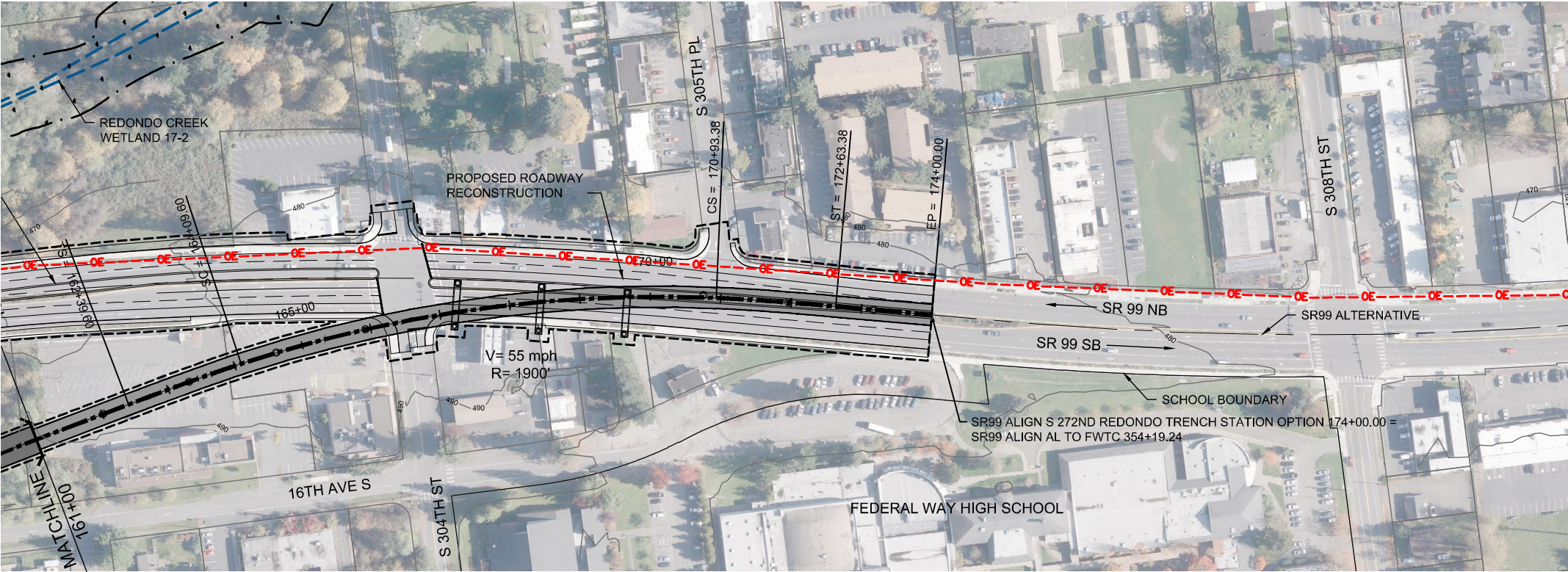


DRAFT EIS - CONCEPTUAL DESIGN
TRACK PLAN AND PROFILE
S 272ND REDONDO TRENCH STATION OPTION
STA 136+00 TO STA 161+00

APRIL 2015

SR99-J6-PP13
85

SOUND TRANSIT FEDERAL WAY LINK EXTENSION



2/25/2015 11:00:52 AM
C:\P\WORKING\SEAD\1141191_272ND TRENCH OPTION.DWG

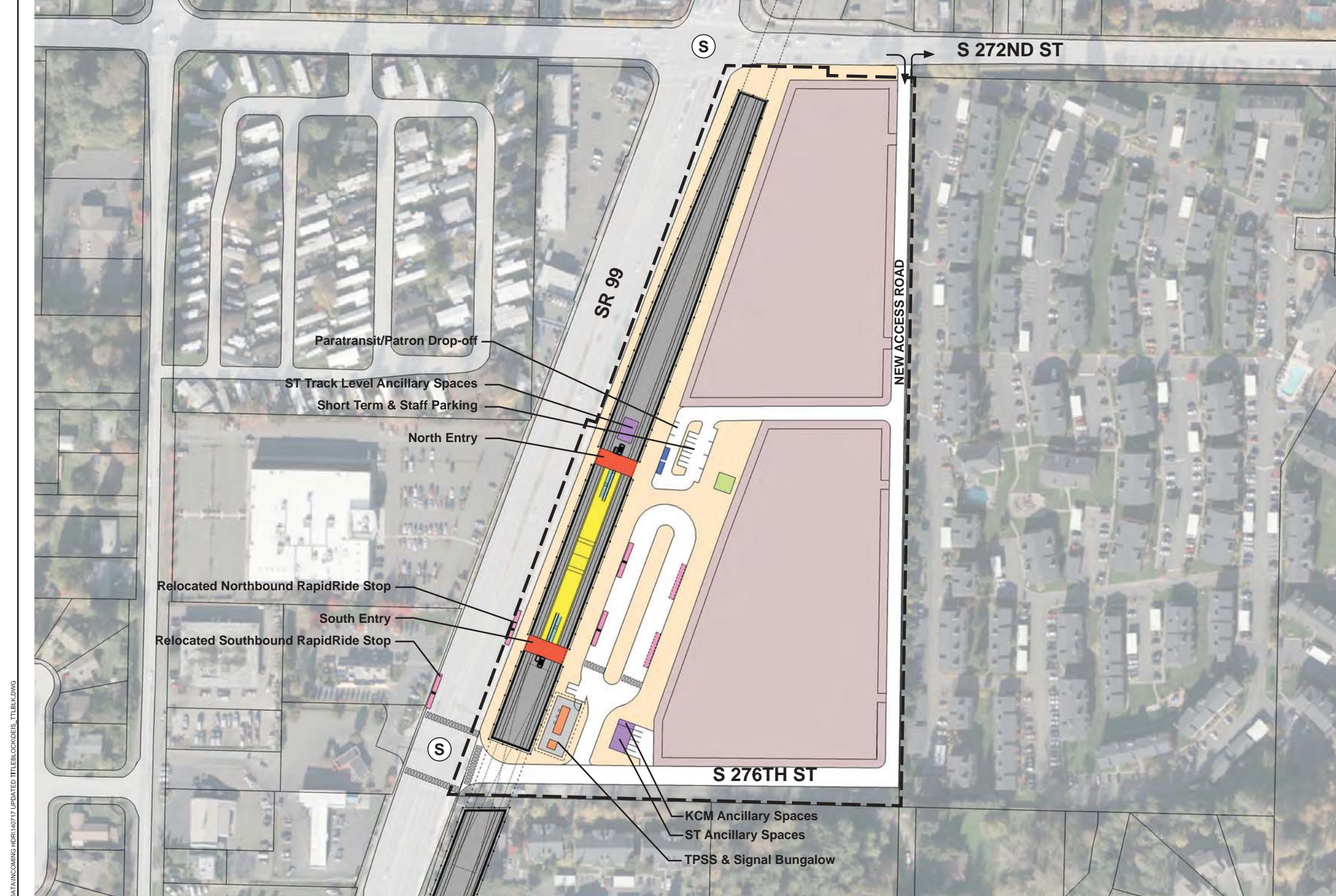


DRAFT EIS - CONCEPTUAL DESIGN
TRACK PLAN AND PROFILE
S 272ND REDONDO TRENCH STATION OPTION
STA 161+00 TO STA 174+00

APRIL 2015

SR99-J7-PP14
86

SOUND TRANSIT FEDERAL WAY LINK EXTENSION



7/17/2014 11:36:52 AM J:\HAMMERQUIST\3684\PROJECTS\67612\FEDERAL WAY TRANSIT EXTENSION\2 CLIENT\2 DATA\INCOMING HDR\40717 UPDATED TITLEBLOCK.DWG

- STATION PLAZA

VERTICAL CIRCULATION

TICKETING / ENTRY HALL

PLATFORM

ANCILLARY SPACES

TPSS
- BUS LAYOVER

BUS PICK-UP / DROP OFF

PARATRANSIT

BICYCLE STORAGE

CONSTRUCTION STAGING / PARKING
- S

SIGNALIZED INTERSECTION (EXISTING)

S

SIGNALIZED INTERSECTION (PROPOSED)

STATION AREA FOOTPRINT

ASSUMPTIONS:

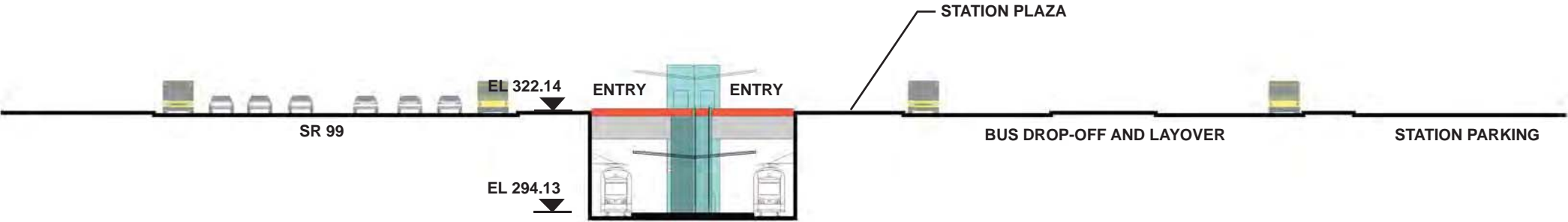
S 272nd Redondo Trench Station Option	
Alternative(s)	SR 99
Boardings	1,500
Boardings (interim terminus)	3,500
Station Configuration	
Terminus / In-Line	Interim Terminus
Station Type	Center Platform - Trench
Platform Width	34'
Tail track	900'
Crossover	Yes
TPSS	Yes
Program	
KC Metro Ancillary Spaces (SF)	200
ST Ancillary Spaces (SF)	1,800
Total Ancillary Spaces (SF)	2,000
Vertical Circulation	
# of entrances	2
# of escalators	2
# of staircases (patron)	2
# of elevators	2
# of emergency stairs	2
Bus/ Paratransit Facilities	
Bus bays (KCM)	2 bays, one 60' coach each
Bus bays (ST)	N/A
Rapid Ride	On-street at SR 99
Bus layover (KCM)	2 bays, one 60' coach each
Bus layover (ST)	N/A
Paratransit	1 permanent, 1 interim
Communications Facility	Tier 2
Parking & Amenities	
Bike storage	900 SF
Patron drop-off	6 spaces
Short-term patron parking	7 to 10 spaces
Staff parking	4 spaces
Service/emerg. vehicle park.	2 spaces, separate lot
Signal bungalow / TPSS park.	2 spaces, dedicated
Existing patron parking	700 spaces
Additional patron parking	700 spaces
Total proposed patron parking	1400 spaces (structure)



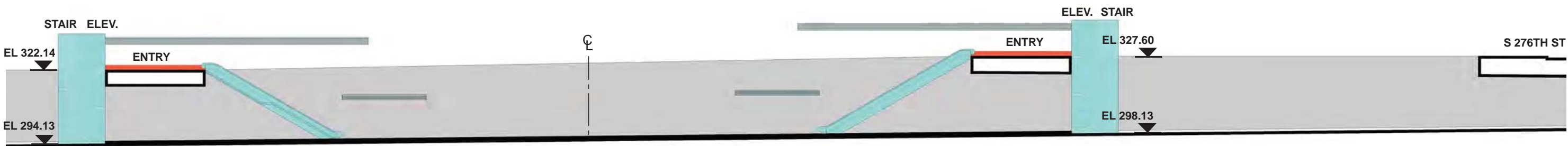
DRAFT EIS - CONCEPTUAL DESIGN
S 272ND REDONDO TRENCH STATION OPTION
SITE PLAN

APRIL 2015
FWLE_S99_AP002
87

SOUND TRANSIT FEDERAL WAY LINK EXTENSION

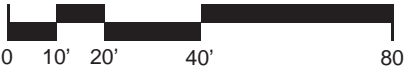


SECTION LOOKING NORTH



SECTION LOOKING EAST

- | | | | |
|--|------------------------|--|--------------------------------|
| | STATION PLAZA | | BUS LAYOVER |
| | VERTICAL CIRCULATION | | BUS PICK-UP / DROP OFF |
| | TICKETING / ENTRY HALL | | PARATRANSIT |
| | PLATFORM | | BICYCLE STORAGE |
| | ANCILLARY SPACES | | CONSTRUCTION STAGING / PARKING |
| | TPSS | | |

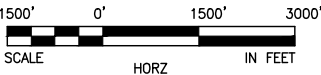


SOUND TRANSIT FEDERAL WAY LINK EXTENSION



SR99 SHEET LAYOUT MATRIX																
	1	2	3	4	5	6	7	8	9	10	11	12	13	14	15	16
A - SR 99 ALTERNATIVE	X	X	X	X	X	X	X	X	X	X	X	X	X	X	X	X
B - S 216TH WEST STATION OPTION (POTENTIAL ADDITIONAL STATION)	X	X	X													
C - S 216TH EAST STATION OPTION (POTENTIAL ADDITIONAL STATION)		X	X													
D - KENT/DES MOINES SR 99 MEDIAN STATION OPTION				X	X	X										
E - KENT/DES MOINES SR 99 EAST STATION OPTION				X	X	X	X									
F - KENT/DES MOINES HC CAMPUS STATION OPTION			X	X	X	X	X									
F - KDM HC CAMPUS OPTION FROM S 216TH WEST STATION OPTION						X	X	X	X	X						
G - S 260TH WEST STATION OPTION (POTENTIAL ADDITIONAL STATION)					X	X	X	X	X							
H - S 260TH EAST STATION OPTION (POTENTIAL ADDITIONAL STATION)							X	X	X	X						
J - S 272ND REDONDO TRENCH STATION OPTION								X	X	X	X	X	X	X		
K - FEDERAL WAY SR 99 STATION OPTION															X	X

I - NOT USED



2/25/2015 9:20:55 AM
C:\P\WORKING\SEAD\11417\SR99-A00-GX02.DWG

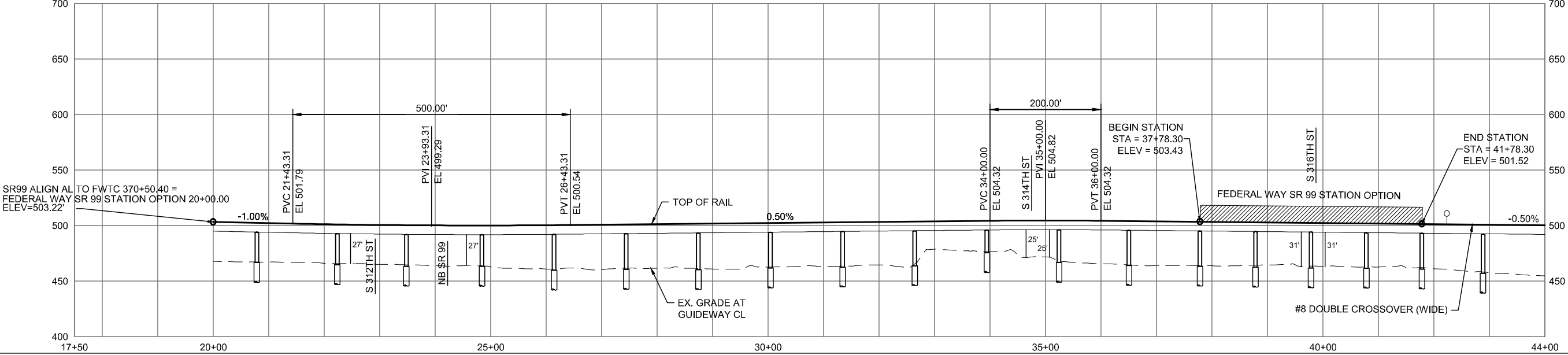
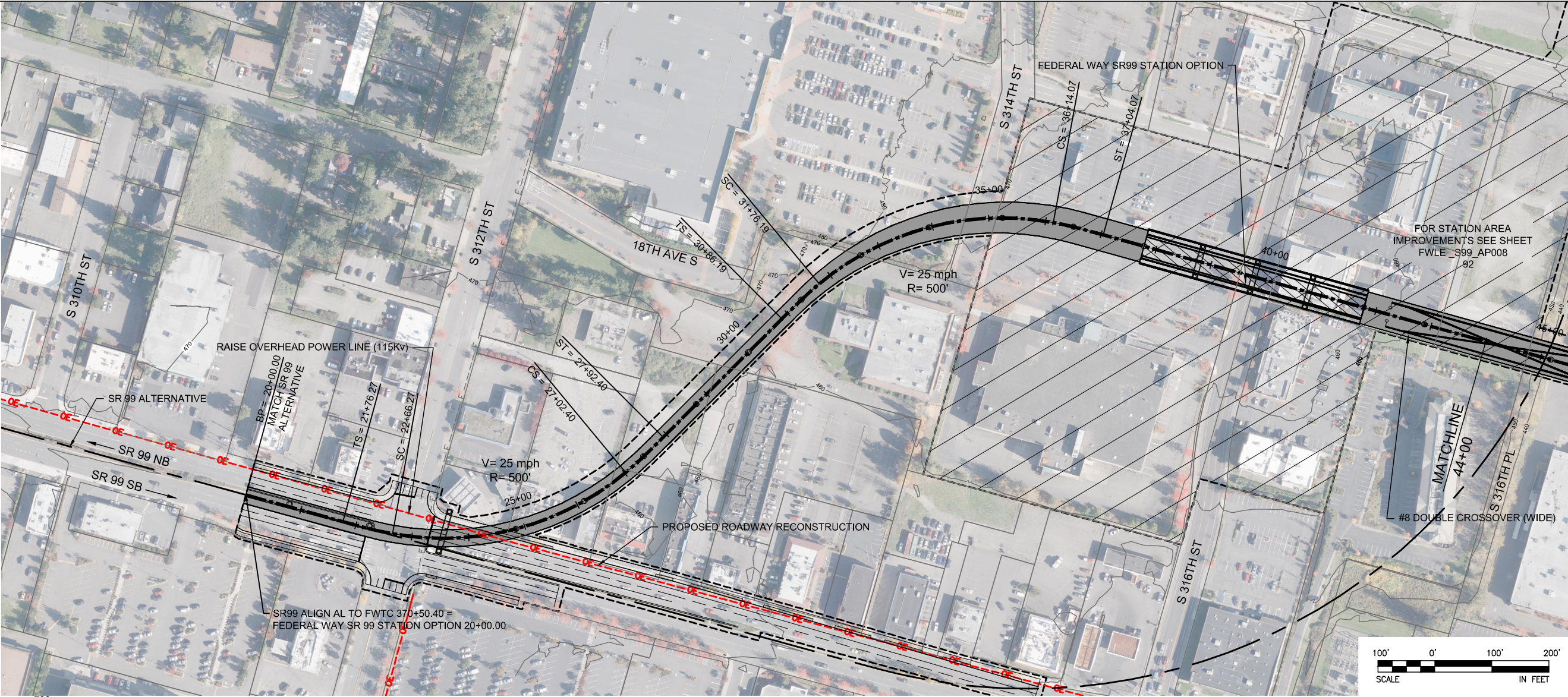


DRAFT EIS - CONCEPTUAL DESIGN
FEDERAL WAY SR 99 STATION OPTION
SHEET INDEX KEYMAP

APRIL 2015

SR99-K00-GX02
89

SOUND TRANSIT FEDERAL WAY LINK EXTENSION



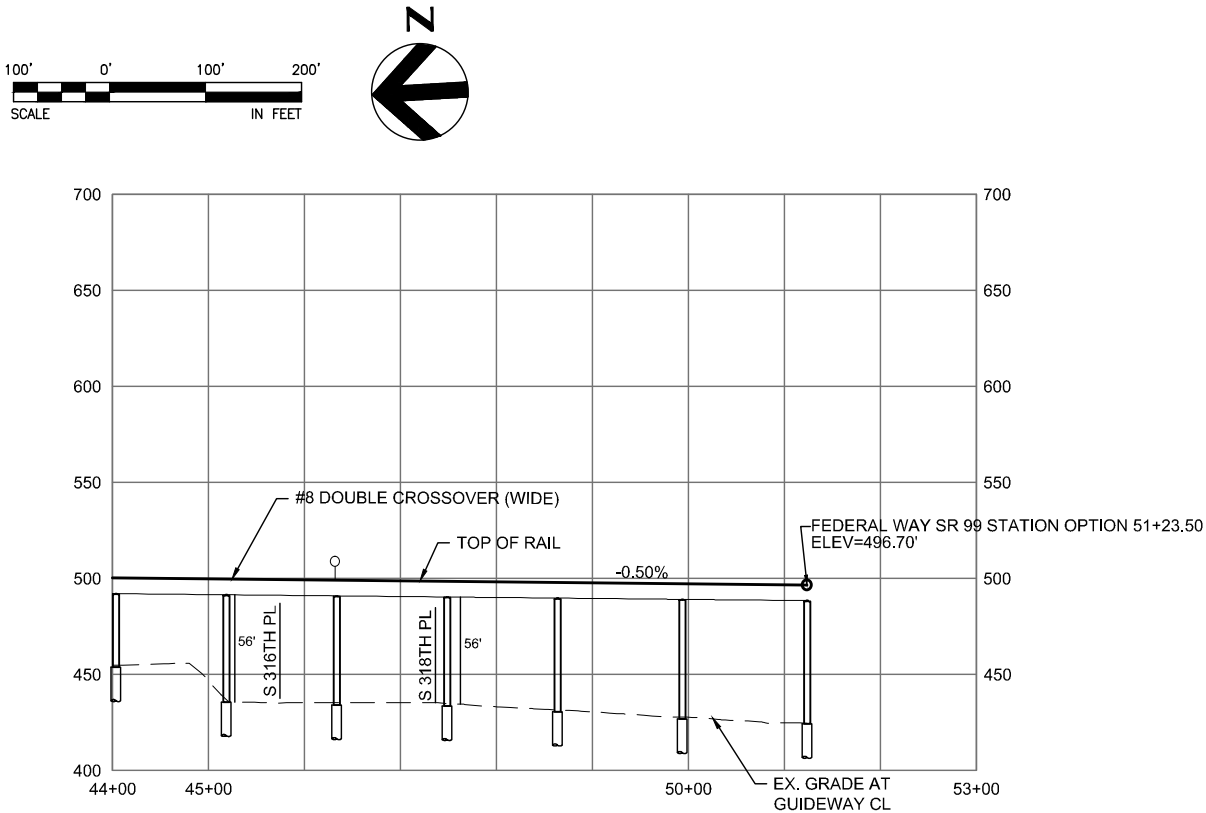
DRAFT EIS - CONCEPTUAL DESIGN
TRACK PLAN & PROFILE AND ROADWAY RECONSTRUCTION
FEDERAL WAY SR 99 STATION OPTION
STA 20+00 TO STA 44+00



APRIL 2015

2/27/2015 2:37:29 PM C:\WORKING\SEAD114119K_PVT_C SR99 STATION.DWG

SOUND TRANSIT FEDERAL WAY LINK EXTENSION



2/27/2015 2:37:37 PM C:\WORKING\SEAD\114119K FWLE SR99 STATION.DWG C:\WORKING\SEAD\114119K FWLE SR99 STATION.DWG

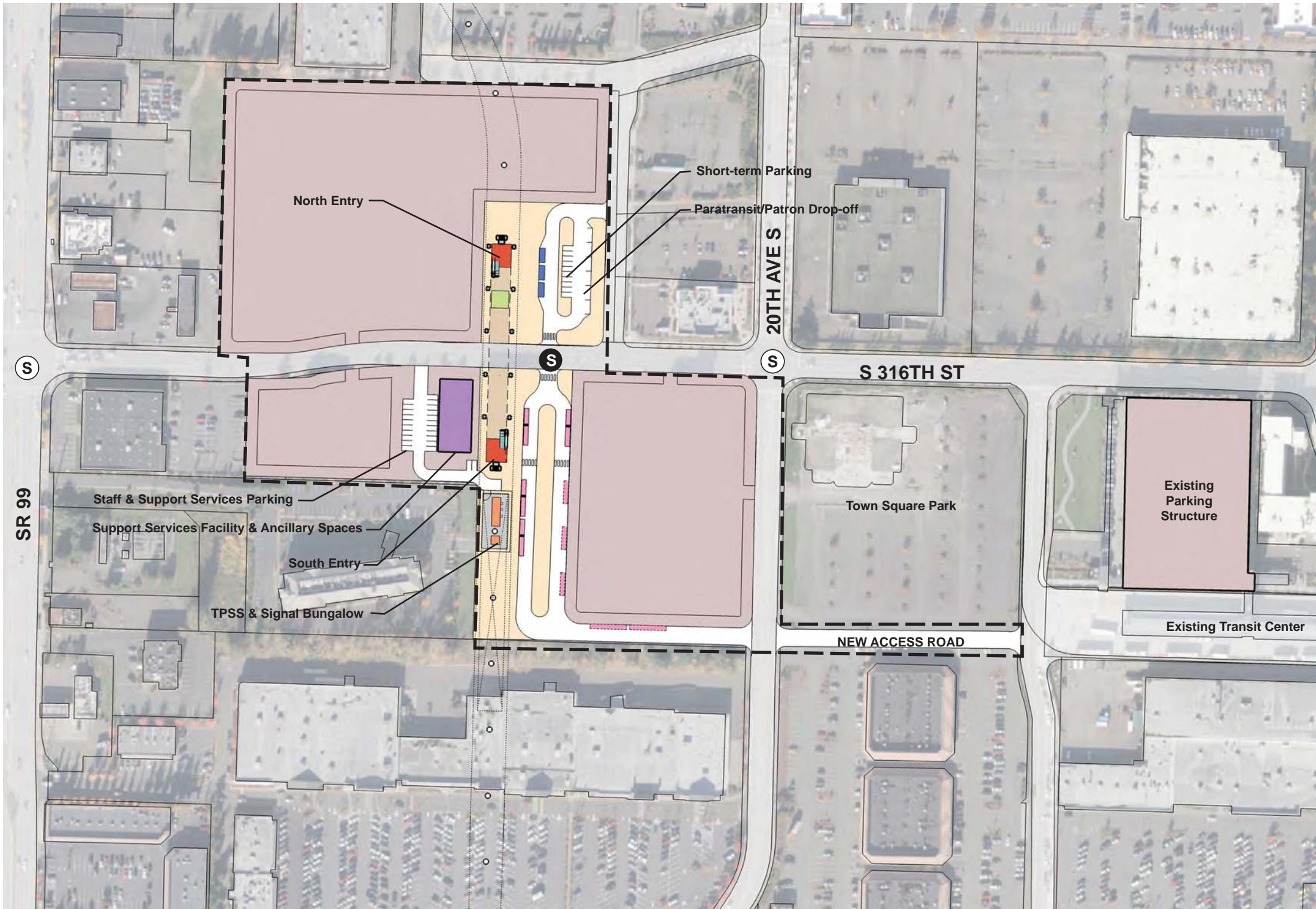


DRAFT EIS - CONCEPTUAL DESIGN
TRACK PLAN & PROFILE AND ROADWAY RECONSTRUCTION
FEDERAL WAY SR 99 STATION OPTION
STA 44+00 TO STA 51+23.50

APRIL 2015

SR99-K2-PP16
91

SOUND TRANSIT FEDERAL WAY LINK EXTENSION



- STATION PLAZA

VERTICAL CIRCULATION

TICKETING / ENTRY HALL

PLATFORM

ANCILLARY SPACES

TPSS
- BUS LAYOVER

BUS PICK-UP / DROP OFF

PARATRANSIT

BICYCLE STORAGE

CONSTRUCTION STAGING / PARKING

- STATION AREA FOOTPRINT

SIGNALIZED INTERSECTION (EXISTING)

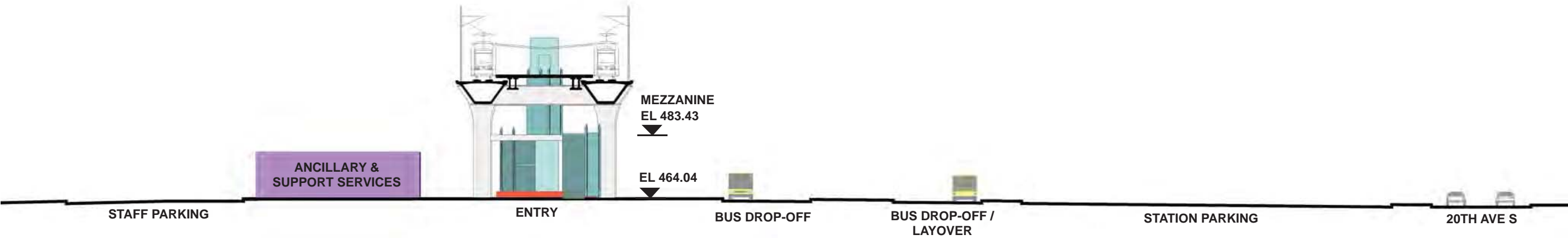
SIGNALIZED INTERSECTION (PROPOSED)

ASSUMPTIONS:

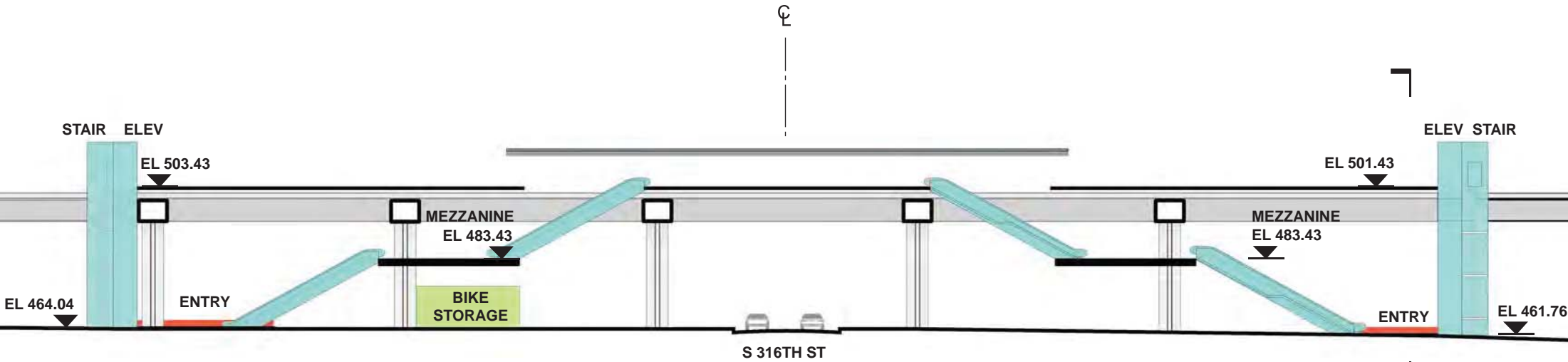
Federal Way SR 99 Station Option	
Alternative(s)	SR 99; I-5 to SR 99
Boardings	8,500
Station Configuration	
Terminus / In-Line	Terminus
Station Type	Center Platform - Elevated
Platform Width	34'
Tail track	900'
Crossover	Yes
TPSS	Yes
Program	
KC Metro Ancillary Spaces (SF)	200
ST Ancillary Spaces (SF)	1,800
Support Services (SF)	5,000
Total Ancillary Spaces (SF)	7,000
Vertical Circulation	
# of entrances	2
# of escalators	4
# of staircases (patron)	4
# of elevators	2
# of emergency stairs	2
Bus/ Paratransit Facilities	
Bus bays (KCM)	2 bays, one 60' coach each
Bus bays (ST)	1 bay, two 60' coaches
Rapid Ride	
Bus layover (KCM)	3 bays, one 40' coach each
Bus layover (ST)	1 bay, two 60' coaches
Paratransit spaces	3 spaces
Communications Facility	Tier 3
Parking & Amenities	
Bike storage	900 SF
Patron drop-off	6 spaces
Short-term patron parking	7 to 10 spaces
Staff parking	4 spaces
Support Services parking	15 spaces
Service/emerg. vehicle park.	2 spaces, separate lot
Signal bungalow / TPSS park.	2 spaces, dedicated
Existing patron parking	1,190 spaces
Additional patron parking	400 spaces
Total proposed patron parking	1590 spaces (structure)



SOUND TRANSIT FEDERAL WAY LINK EXTENSION

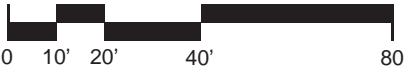


SECTION LOOKING SOUTH



SECTION LOOKING EAST

- | | |
|------------------------|--------------------------------|
| STATION PLAZA | BUS LAYOVER |
| VERTICAL CIRCULATION | BUS PICK-UP / DROP OFF |
| TICKETING / ENTRY HALL | PARATRANSIT |
| PLATFORM | BICYCLE STORAGE |
| ANCILLARY SPACES | CONSTRUCTION STAGING / PARKING |
| TPSS | |



DRAFT EIS - CONCEPTUAL DESIGN
FEDERAL WAY SR 99 STATION OPTION
SECTIONS

APRIL 2015
FWLE_S99_AX008
93

7/17/2014 11:36:52 AM JHAMMERQUIST G:\BWA\PROJECTS\67612\FEDERAL WAY TRANSIT EXTENSION\2 CLIENT\2 DATA\INCOMING HDR\40717 UPDATED TITLEBLOCKS\TTLB\K.DWG



This page intentionally left blank.