

Federal Way Link Extension

Draft Environmental Impact Statement

CONCEPTUAL DESIGN DRAWINGS

Appendix F



Contents

SR 99 Alternative: pp. 1-25

- S 216th West Station Option: pp. 26-31
- S 216th East Station Option: pp. 32-36
- Kent/Des Moines SR 99 Median Station Option: pp. 37-42
- Kent/Des Moines SR 99 East Station Option: pp. 43-49
- Kent/Des Moines HC Campus Station Option: pp. 50-57
- Kent/Des Moines HC Campus Station Option from S 216th West Station Option: pp. 58-63
- S 260th West Station Option: pp. 64-71
- S 260th East Station Option: pp. 72-78
- S 272nd Redondo Trench Station Option: pp. 79-88
- Federal Way SR 99 Station Option: pp. 89-93

I-5 Alternative: pp. 94-118

- Kent/Des Moines At-Grade Station Option: pp. 119-124
- Kent/Des Moines SR 99 East Station Option: pp. 125-130
- Landfill Median Alignment Option: pp.131-134
- Federal Way I-5 Station Option: pp. 135-138
- Federal Way S 320th Park-and-Ride Station Option: pp. 139-143

SR 99 to I-5 Alternative: pp. 144-151

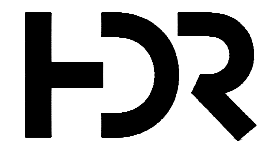
I-5 to SR 99 Alternative: pp. 152-160

- S 260th West Station Option: pp. 161-163

This page intentionally left blank.

DRAFT EIS - CONCEPTUAL DESIGN SR 99 TO I-5 ALTERNATIVE

This page intentionally left blank.



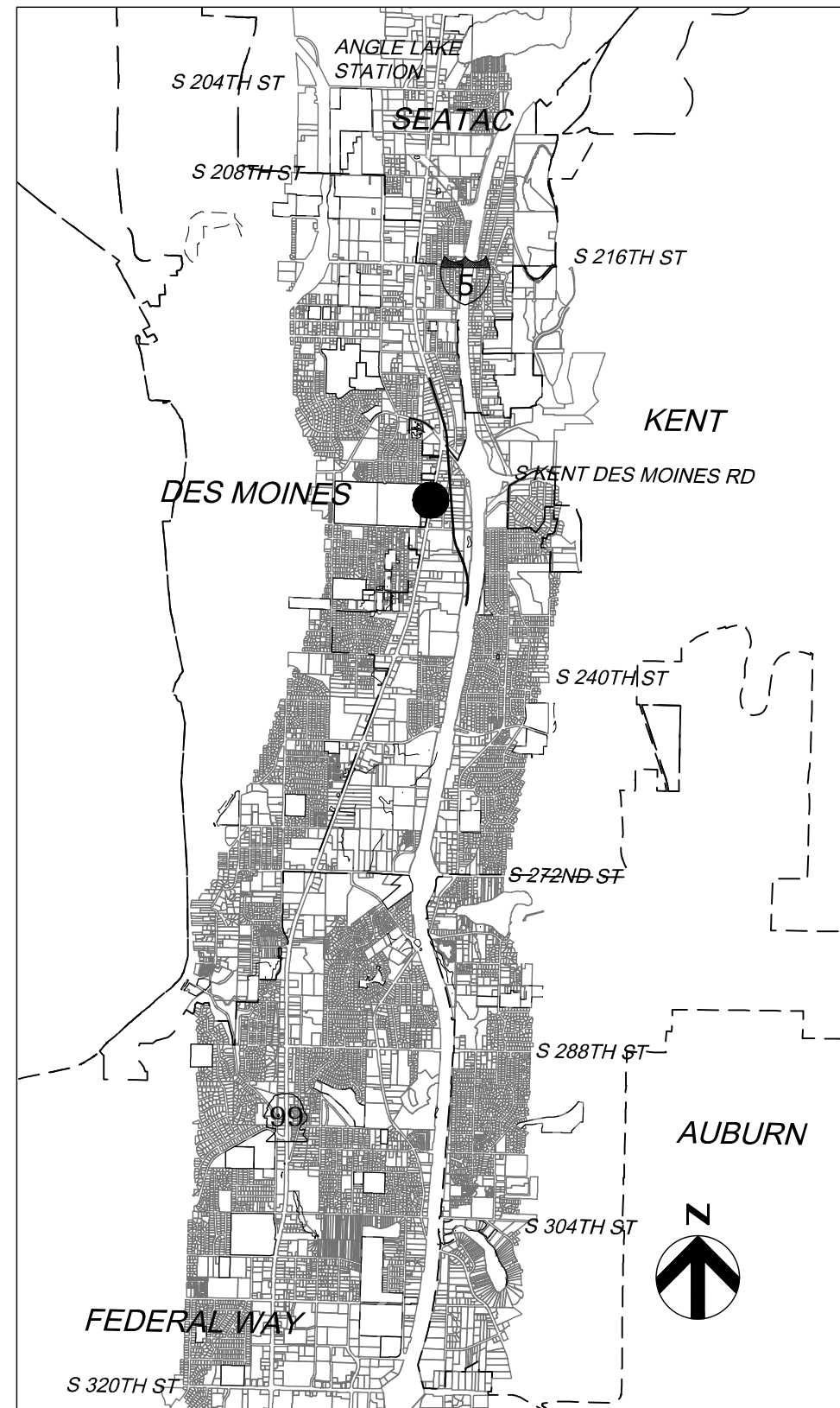
SOUND TRANSIT FEDERAL WAY LINK EXTENSION

DRAFT EIS - CONCEPTUAL DESIGN SR 99 TO I-5 ALTERNATIVE

APRIL 2015

SHEET KEY

SR 99 TO I-5 ALTERNATIVE



PROJECT LOCATION MAP

SOUND TRANSIT FEDERAL WAY LINK EXTENSION

| Sheet No. | Drawing No. | Sheet Title | |
|-------------------------|-----------------------|--|--|
| SR99 TO I-5 ALTERNATIVE | | | |
| 144 | SR99-L00-GX00 | COVER SHEET | |
| 145 | SR99-L00-GX01 | SHEET INDEX | |
| 146 | SR99-L00-GX02 | SHEET INDEX KEYMAP | |
| 147 | SR99-L1-PP01 | TRACK PLAN AND PROFILE STA 10+00 TO STA 35+00 | |
| 148 | SR99-L2-PP02 | TRACK PLAN AND PROFILE STA 35+00 TO STA 63+00 | |
| 149 | SR99-L3-PP03 | TRACK PLAN AND PROFILE STA 63+00 TO STA 79+97.70 | |
| 150 | FWLE_S99_to_I-5_AP001 | KENT/DES MOINES 30TH AVENUE WEST STATION - SITE PLAN | |
| 151 | FWLE_S99_to_I-5_AX001 | KENT/DES MOINES 30TH AVENUE WEST STATION - SECTIONS | |

ABBREVIATIONS

| | |
|---|--|
| B BP | BEGIN POINT |
| C CTR CL CS | CENTER CENTERLINE CURVE TO SPIRAL |
| D DO DWG | DESIGN OPTION DRAWING |
| E E EL EP EX | EAST/ELECTRICAL ELEVATION END POINT EXISTING |
| F FWLE FWTC | FEDERAL WAY LINK EXTENSION FEDERAL WAY TRANSIT CENTER |
| G G | GAS |
| H HC HORZ | HIGHLINE COLLEGE HORIZONTAL |
| K KC KCM KDM Kv | KING COUNTY KING COUNTY METRO KENT/DES MOINES KILOVOLTS |
| M MPH | MILES PER HOUR |
| N N NB | NORTH NORTHBOUND |
| O OE | OVERHEAD ELECTRICAL |
| P PC PL PS PT PVC PVI PVT | POINT OF CURVATURE PLACE POINT OF SWITCH POINT OF TANGENCY POINT OF VERTICAL CURVATURE POINT OF VERTICAL INTERSECTION POINT OF VERTICAL TANGENCY |
| R R RD ROW | RADUIS ROAD RIGHT OF WAY |

| | |
|--|--|
| S S SB SC SF SR ST STA | SOUTH SOUTH BOUND SPIRAL TO CURVE SQUARE FEET STATE ROUTE STREET, SPIRAL TO TANGENT, or SOUND TRANSIT STATION |
| T TPSS TS TYP | TRACTION POWER SUBSTATION TANGENT TO SPIRAL TYPICAL |
| V V | VELOCITY |

EXISTING FEATURES

| | |
|--|---------------------------|
| | RIGHT OF WAY LINE |
| | LOT LINE |
| | GAS |
| | OVERHEAD ELECTRICAL |
| | UNDERGROUND ELECTRICAL |
| | WETLAND |
| | STREAM |
| | TRACK CENTERLINE |
| | EXISTING GROUND (PROFILE) |
| | CONTOUR LINE |

PROPOSED FEATURES

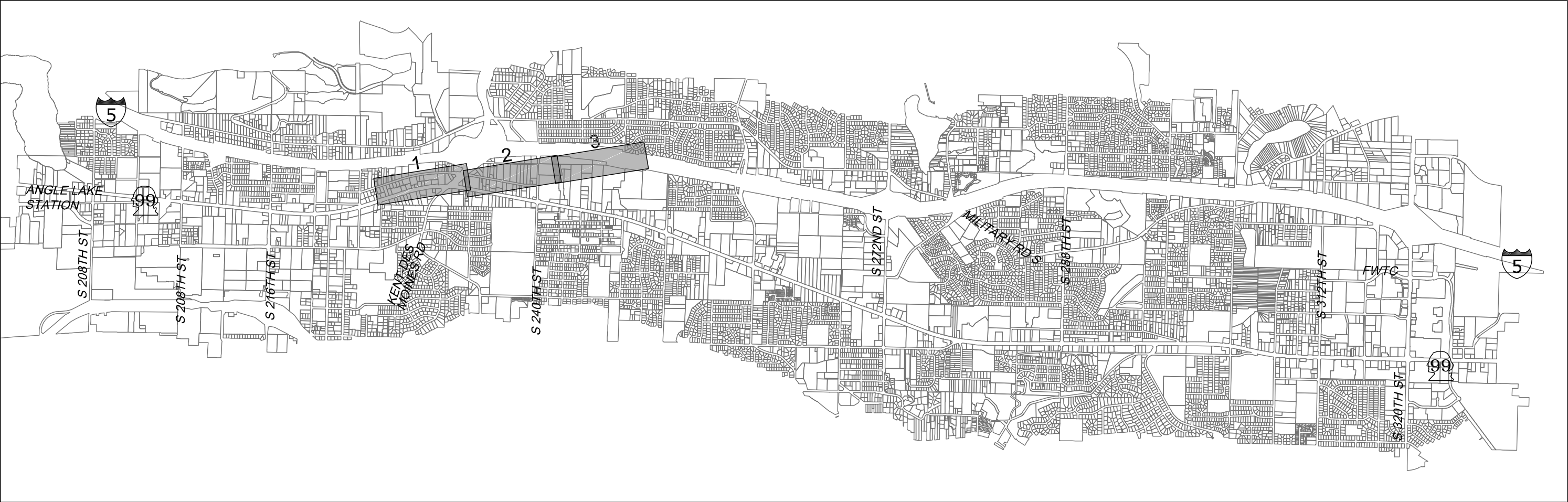
| | |
|--|------------------------------------|
| | PROPOSED WSDOT ROW |
| | CITY LIMITS |
| | CONSTRUCTION FOOTPRINT |
| | GUIDEWAY CENTERLINE |
| | CURB AND SIDEWALK |
| | BOTTOM OF STRUCTURE (PROFILE) |
| | TOP OF RAIL (PROFILE) |
| | STATION PLATFORM |
| | AT-GRADE /TRENCH (BALLASTED) TRACK |
| | ELEVATED GUIDEWAY |
| | COLUMNS / STRADDLE BENTS |
| | LONG SPAN COLUMNS |
| | HEAD WALL |
| | TPSS BUILDING |
| | NEW SIGNAL |

2/25/2015 9:18:37 AM
C:\P\WORKING\SEAD\114117SR99-ALT-GX01.DWG

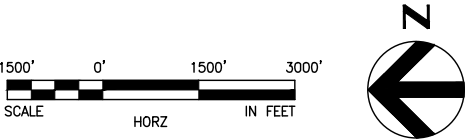
CFOX



SOUND TRANSIT FEDERAL WAY LINK EXTENSION



| SR99 TO I-5 SHEET LAYOUT MATRIX | | | |
|---------------------------------|---|---|---|
| | 1 | 2 | 3 |
| L - SR 99 TO I-5 ALTERNATIVE | X | X | X |



2/25/2015 9:20:57 AM
C:\P\WORKING\SEAD\114117\SR99-AL00-GX02.DWG
C:\P\

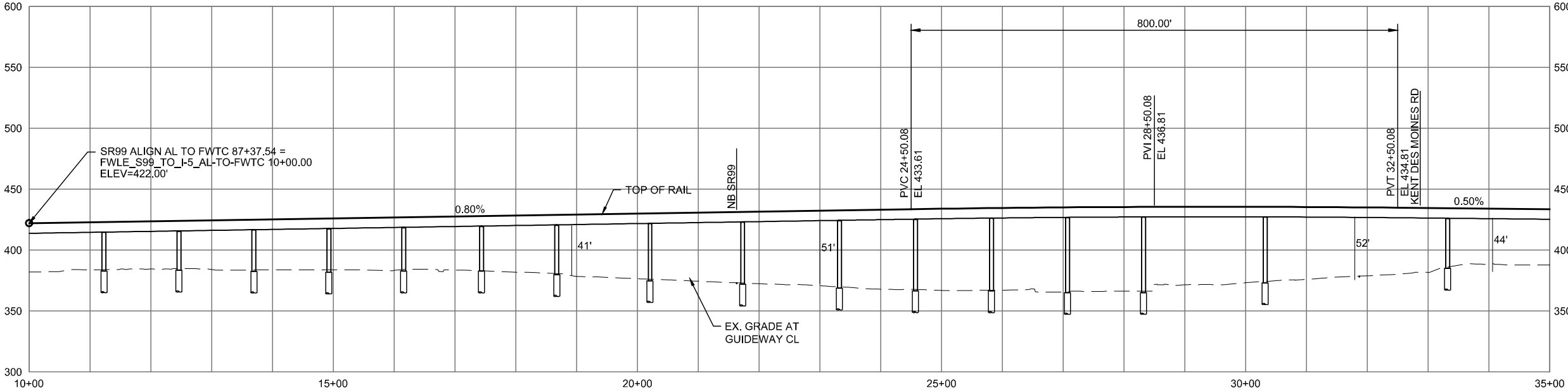
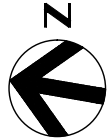
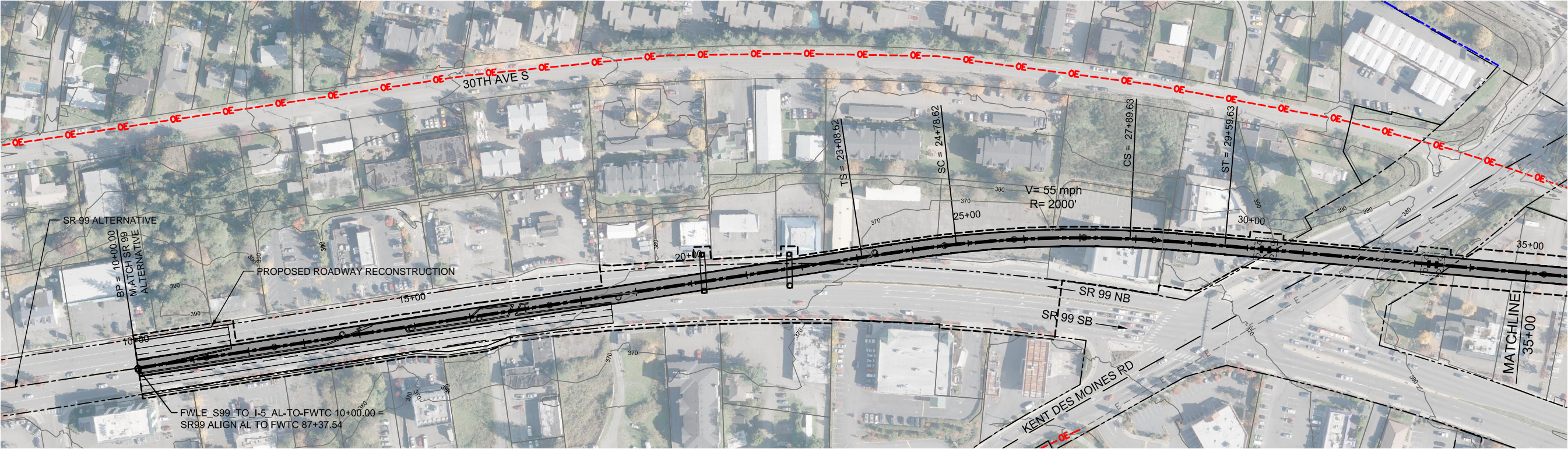


DRAFT EIS - CONCEPTUAL DESIGN
SR 99 TO I-5 ALTERNATIVE
SHEET INDEX KEYMAP

APRIL 2015

SR99-L00-GX02
146

SOUND TRANSIT FEDERAL WAY LINK EXTENSION



2/25/2015 5:07:17 PM C:\WORKING\SEAD\114119\FWLE_S99 TO I-5.DWG

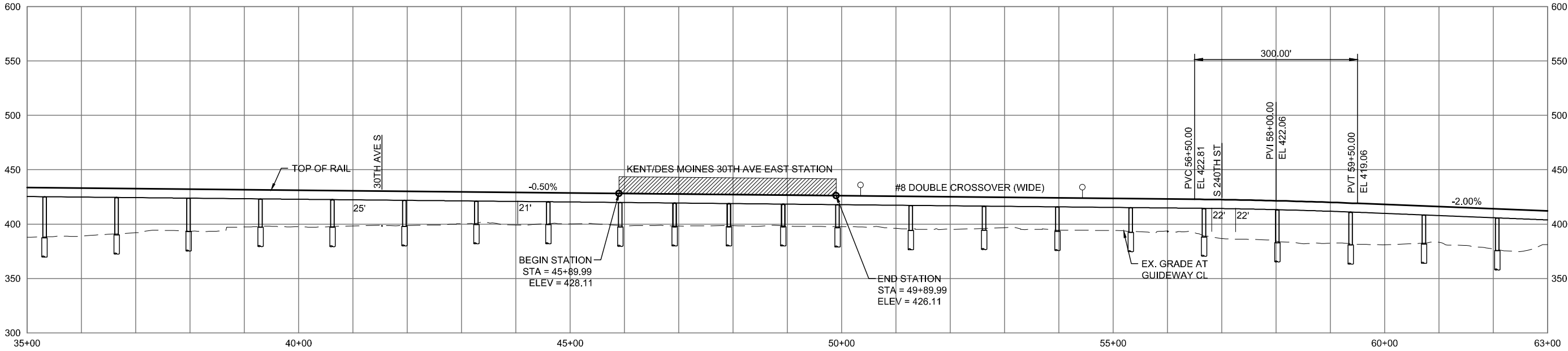
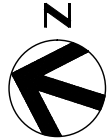
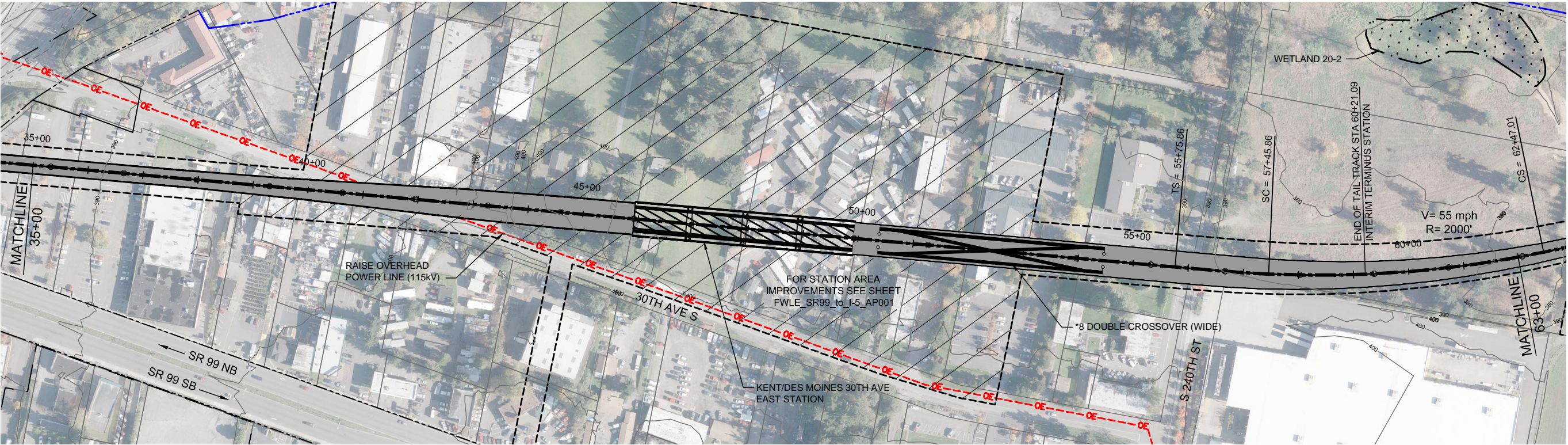


DRAFT EIS - CONCEPTUAL DESIGN
TRACK PLAN & PROFILE AND ROADWAY RECONSTRUCTION
SR 99 TO I-5 ALTERNATIVE
STA 10+00 TO STA 35+00

APRIL 2015

SR99-L1-PP01
147

SOUND TRANSIT FEDERAL WAY LINK EXTENSION



2/25/2015 5:07:36 PM C:\PWORKING\SEAD\114119\FWLE_SR99_TO_I-5.DWG C:\OX

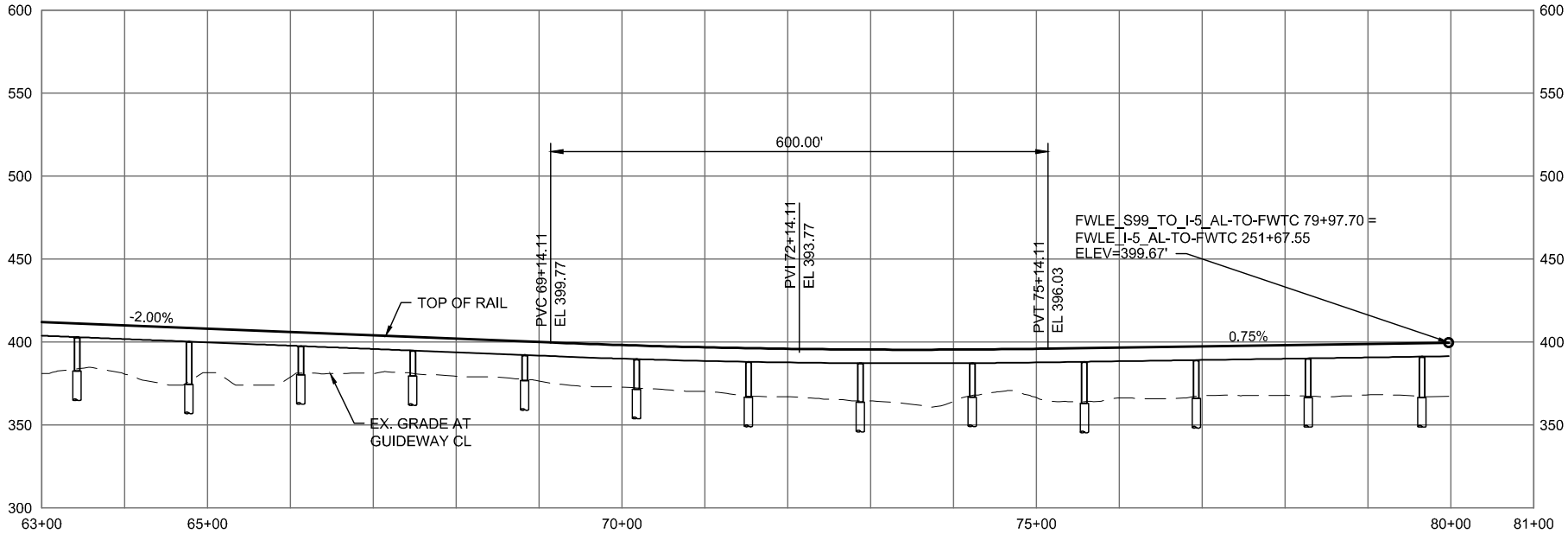
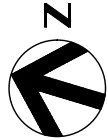
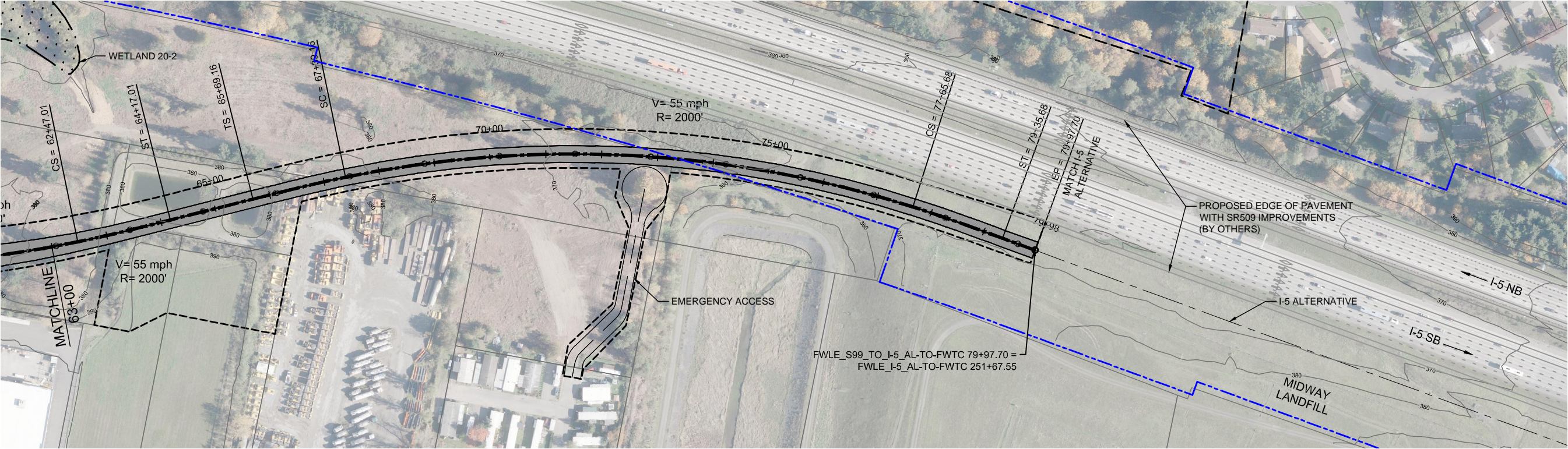


DRAFT EIS - CONCEPTUAL DESIGN
TRACK PLAN & PROFILE AND ROADWAY RECONSTRUCTION
SR 99 TO I-5 ALTERNATIVE
STA 35+00 TO STA 63+00

APRIL 2015

SR99-L2-PP02
148

SOUND TRANSIT FEDERAL WAY LINK EXTENSION



2/25/2015 5:07:48 PM C:\P\WORKING\SEAD\114119\FWLE_S99_TO_I-5.DWG C:\P\WORKING\SEAD\114119\FWLE_S99_TO_I-5.DWG

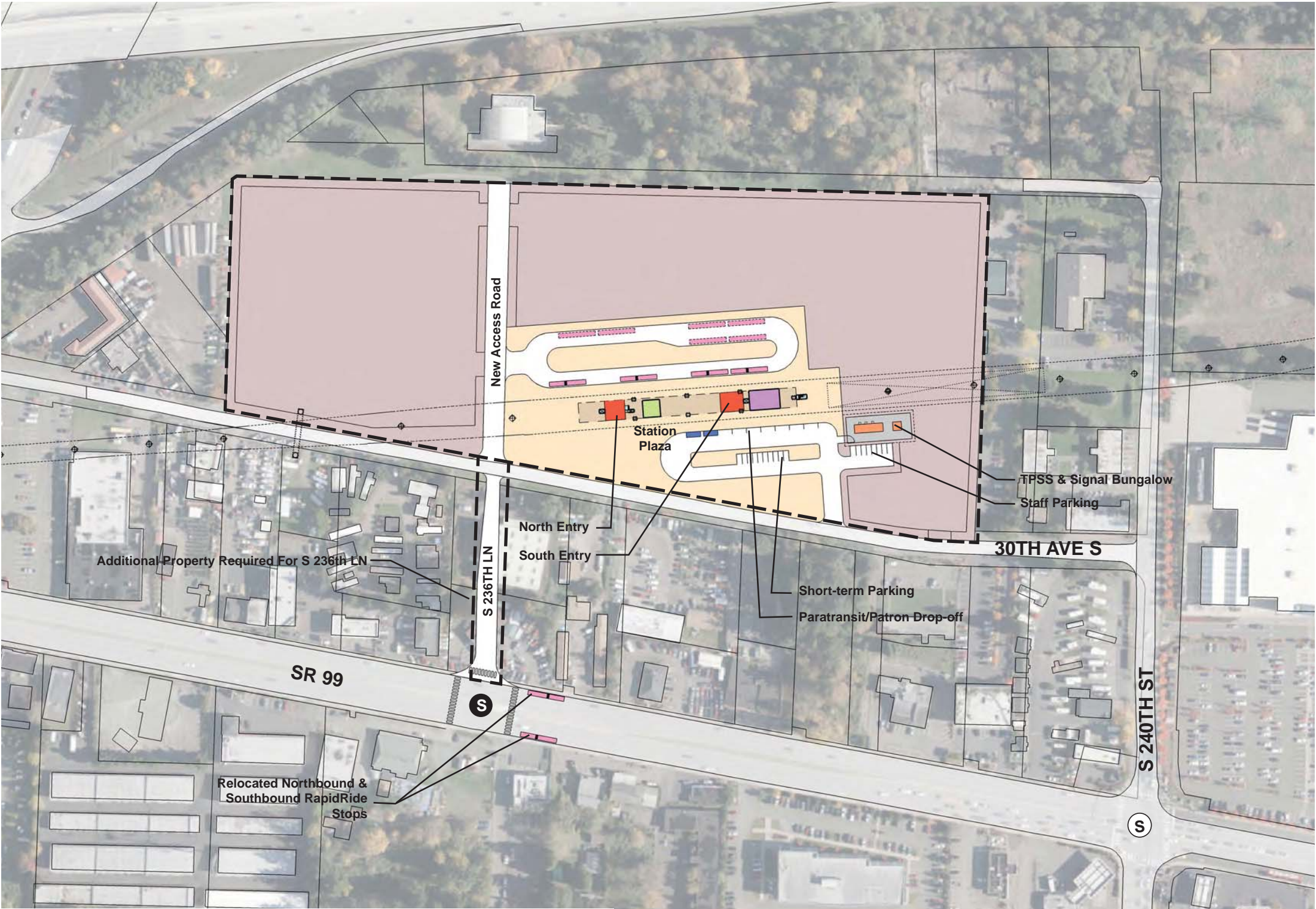


DRAFT EIS - CONCEPTUAL DESIGN
TRACK PLAN & PROFILE AND ROADWAY RECONSTRUCTION
SR 99 TO I-5 ALTERNATIVE
STA 63+00 TO STA 79+97.70

APRIL 2015

SR99-L3-PP03
149

SOUND TRANSIT FEDERAL WAY LINK EXTENSION



ASSUMPTIONS:

| Kent/Des Moines 30th Avenue East Station | |
|--|------------------------------|
| Alternative(s) | SR 99 to I-5 |
| Boardings | 2,500 |
| Boardings (with 216th Station) | 2,500 |
| Boardings (interim terminus) | 4,500 |
| Station Configuration | |
| Terminus / In-Line | Interim Terminus |
| Station Type | Center Platform - Elevated |
| Platform Width | 34' |
| Tail track | 900' |
| Crossover | Yes |
| TPSS | Yes |
| Program | |
| KC Metro Ancillary Spaces (SF) | 200 |
| ST Ancillary Spaces (SF) | 1,800 |
| Total Ancillary Spaces (SF) | 2,000 |
| Vertical Circulation | |
| # of entrances | 2 |
| # of escalators | 1 |
| # of staircases (patron) | 1 |
| # of elevators | 2 |
| # of emergency stairs | 2 |
| Bus/ Paratransit Facilities | |
| Bus bays (KCM) | 2 bays, one 60' coach each |
| Bus bays (ST) | 1 bay, two 60' coaches |
| Rapid Ride | On-street at SR 99 |
| Bus layover (KCM) | 2 bays, two 60' coaches each |
| Bus layover (ST) | 1 bay, two 60' coaches |
| Paratransit spaces | 1 permanent, 1 interim |
| Communications Facility | Tier 2 |
| Parking & Amenities | |
| Bike storage | 900 SF |
| Patron drop-off | 6 spaces |
| Short-term patron parking | 7 to 10 spaces |
| Staff parking | 4 spaces |
| Service/emerg. vehicle park. | 2 spaces, separate lot |
| Signal bungalow / TPSS park. | 2 spaces, dedicated |
| Long-term patron parking | 500 spaces (structure) |
| Temporary patron parking* | 500 spaces (surface) |
| Total proposed patron parking* | 1000 spaces |

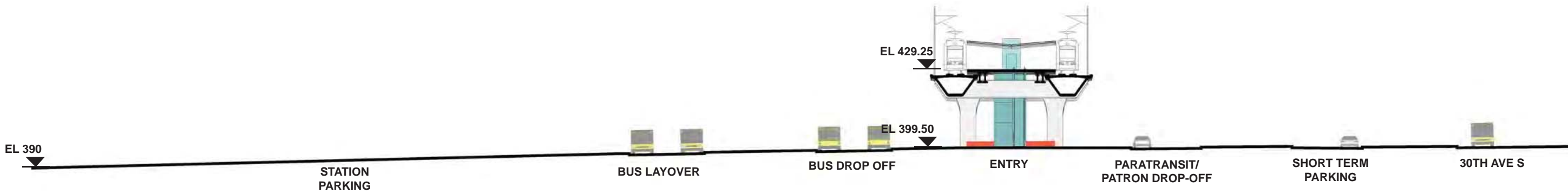
*Only required for interim terminus condition



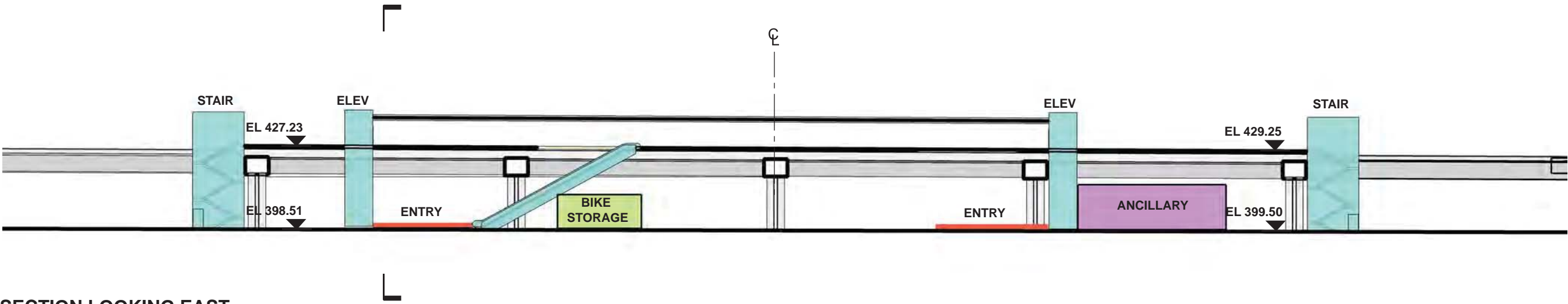
7/17/2014 11:36:52 AM JHAMMERQUIST G:\BWH PROJECTS\67612 FEDERAL WAY TRANSIT EXTENSION\2 CLIENT\2 DATA\INCOMING HDR\40717 UPDATED TITLEBLOCK\DES_TTLB\KJ.DWG



SOUND TRANSIT FEDERAL WAY LINK EXTENSION

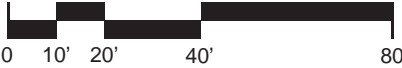


SECTION LOOKING SOUTH



SECTION LOOKING EAST

- | | |
|------------------------|--------------------------------|
| STATION PLAZA | BUS LAYOVER |
| VERTICAL CIRCULATION | BUS PICK-UP / DROP OFF |
| TICKETING / ENTRY HALL | PARATRANSIT |
| PLATFORM | BICYCLE STORAGE |
| ANCILLARY SPACES | CONSTRUCTION STAGING / PARKING |
| TPSS | |



DRAFT EIS - CONCEPTUAL DESIGN
KENT/DES MOINES 30TH AVENUE EAST STATION
SECTIONS

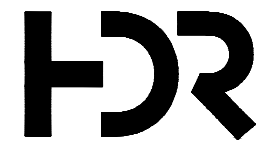
APRIL 2015
FWLE_S99_to_I-5_AX001
151



7/17/2014 11:26:52 AM JHAMMERQUIST G:\BWA PROJECTS\67612 FEDERAL WAY TRANSIT EXTENSION\2 CLIENT\2 DATA\INCOMING HDR\40717 UPDATED TITLEBLOCKS\TTLBK.DWG

DRAFT EIS - CONCEPTUAL DESIGN I-5 TO SR99 ALTERNATIVE

This page intentionally left blank.



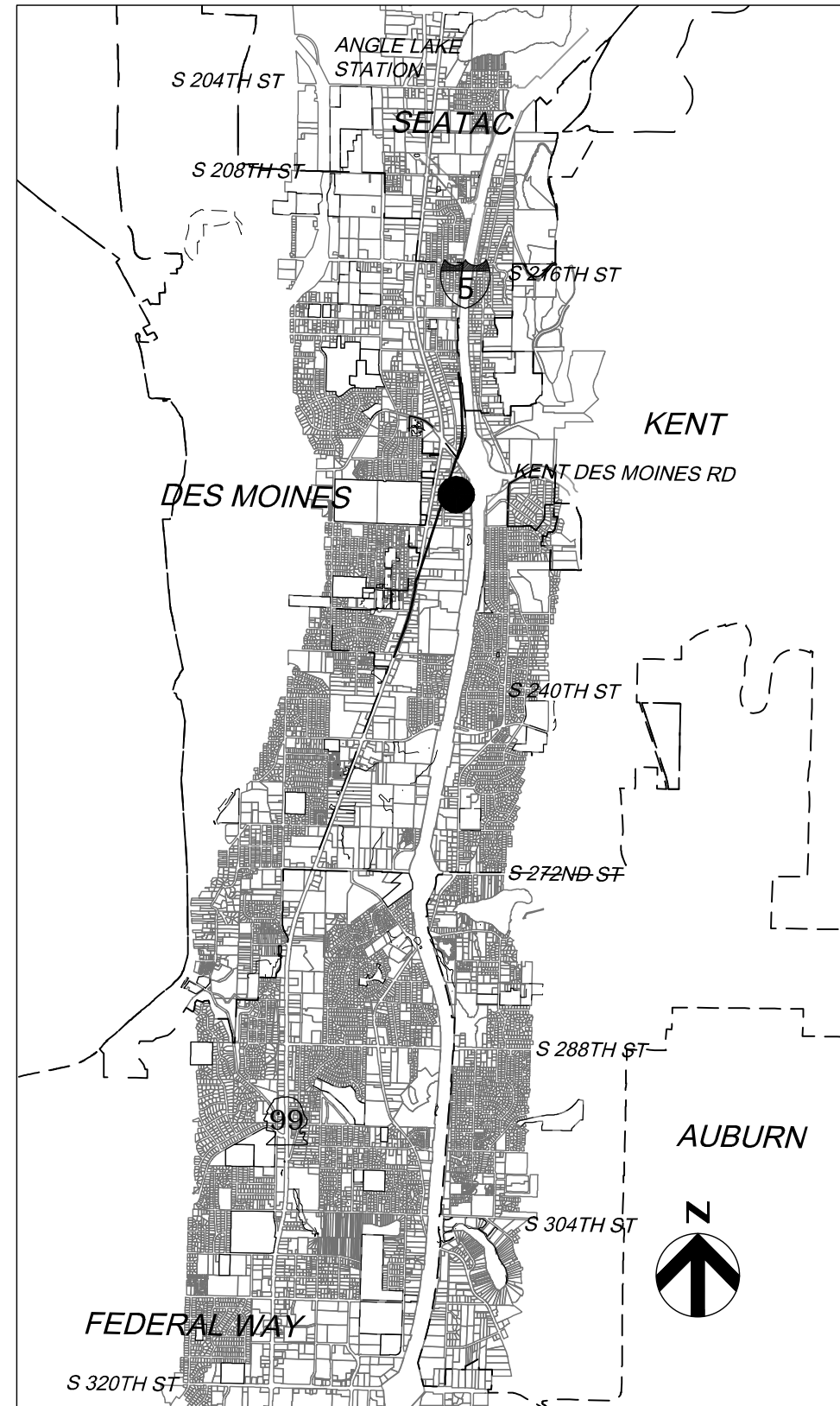
SOUND TRANSIT FEDERAL WAY LINK EXTENSION

CONCEPTUAL DESIGN I-5 TO SR99 ALTERNATIVE

APRIL 2015

SHEET KEY

*I-5 TO SR 99 ALTERNATIVE
I-5 TO SR 99 260TH WEST STATION OPTION*



PROJECT LOCATION MAP

SOUND TRANSIT FEDERAL WAY LINK EXTENSION

| Sheet No. | Drawing No. | Sheet Title | |
|--|----------------------|--|--|
| I-5 TO SR99 ALTERNATIVE | | | |
| 152 | I5-P00-GX00 | COVER SHEET | |
| 153 | I5-P00-GX01 | SHEET INDEX | |
| 154 | I5-P00-GX02 | SHEET INDEX KEYMAP | |
| 155 | I5-P1-PP01 | TRACK PLAN AND PROFILE STA 20+00 TO STA 36+00 | |
| 156 | I5-P2-PP02 | TRACK PLAN AND PROFILE STA 36+00 TO STA 62+00 | |
| 157 | I5-P2-PP03 | TRACK PLAN AND PROFILE STA 62+00 TO STA 88+00 | |
| 158 | I5-P4-PP04 | TRACK PLAN AND PROFILE STA 88+00 TO STA 108+83.60 | |
| 159 | FWLE_I5_to_S99_AP001 | KENT/DES MOINES 30TH AVENUE WEST STATION - SITE PLAN | |
| 160 | FWLE_I5_to_S99_AX001 | KENT/DES MOINES 30TH AVENUE WEST STATION - SECTIONS | |
| I-5 TO SR99 260TH WEST STATION OPTION (POTENTIAL ADDITIONAL STATION) | | | |
| 161 | I5-R00-GX02 | SHEET INDEX KEYMAP | |
| 162 | I5-R01-PP01 | TRACK PLAN AND PROFILE STA 20+00 TO STA 40+00 | |
| 163 | I5-R02-PP02 | TRACK PLAN AND PROFILE STA 40+00 TO STA 57+00 | |

ABBREVIATIONS

| | | | |
|---|--|--|--|
| B BP | BEGIN POINT | S S SB SC SF SR ST STA | SOUTH SOUTH BOUND SPIRAL TO CURVE SQUARE FEET STATE ROUTE STREET, SPIRAL TO TANGENT, or SOUND TRANSIT STATION |
| C CTR CL CS | CENTER CENTERLINE CURVE TO SPIRAL | T TPSS TS TYP | TRACTION POWER SUBSTATION TANGENT TO SPIRAL TYPICAL |
| D DO DWG | DESIGN OPTION DRAWING | V V | VELOCITY |
| E E EL EP EX | EAST/ELECTRICAL ELEVATION END POINT EXISTING | | |
| F FWLE FWTC | FEDERAL WAY LINK EXTENSION FEDERAL WAY TRANSIT CENTER | | |
| G G | GAS | | |
| H HC HORZ | HIGHLINE COLLEGE HORIZONTAL | | |
| K KC KCM KDM Kv | KING COUNTY KING COUNTY METRO KENT/DES MOINES KILOVOLTS | | |
| M MPH | MILES PER HOUR | | |
| N N NB | NORTH NORTHBOUND | | |
| O OE | OVERHEAD ELECTRICAL | | |
| P PC PL PS PT PVC PVI PVT | POINT OF CURVATURE PLACE POINT OF SWITCH POINT OF TANGENCY POINT OF VERTICAL CURVATURE POINT OF VERTICAL INTERSECTION POINT OF VERTICAL TANGENCY | | |
| R R RD ROW | RADUIS ROAD RIGHT OF WAY | | |

EXISTING FEATURES

| | |
|--|---------------------------|
| | RIGHT OF WAY LINE |
| | LOT LINE |
| | GAS |
| | OVERHEAD ELECTRICAL |
| | UNDERGROUND ELECTRICAL |
| | WETLAND |
| | STREAM |
| | TRACK CENTERLINE |
| | EXISTING GROUND (PROFILE) |
| | CONTOUR LINE |

PROPOSED FEATURES

| | |
|--|------------------------------------|
| | PROPOSED WSDOT ROW |
| | CITY LIMITS |
| | CONSTRUCTION FOOTPRINT |
| | GUIDEWAY CENTERLINE |
| | CURB AND SIDEWALK |
| | BOTTOM OF STRUCTURE (PROFILE) |
| | TOP OF RAIL (PROFILE) |
| | STATION PLATFORM |
| | AT-GRADE /TRENCH (BALLASTED) TRACK |
| | ELEVATED GUIDEWAY |
| | COLUMNS / STRADDLE BENTS |
| | LONG SPAN COLUMNS |
| | HEAD WALL |
| | TPSS BUILDING |
| | NEW SIGNAL |

2/25/2015 12:12:21 PM
C:\P\WORKING\SEAD\07B84D1E-AD-6301.DWG

BRHARRIS



DRAFT EIS - CONCEPTUAL DESIGN

SHEET INDEX
I-5 TO SR 99 ALTERNATIVE

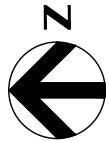
APRIL 2015

I5-P00-GX01
153

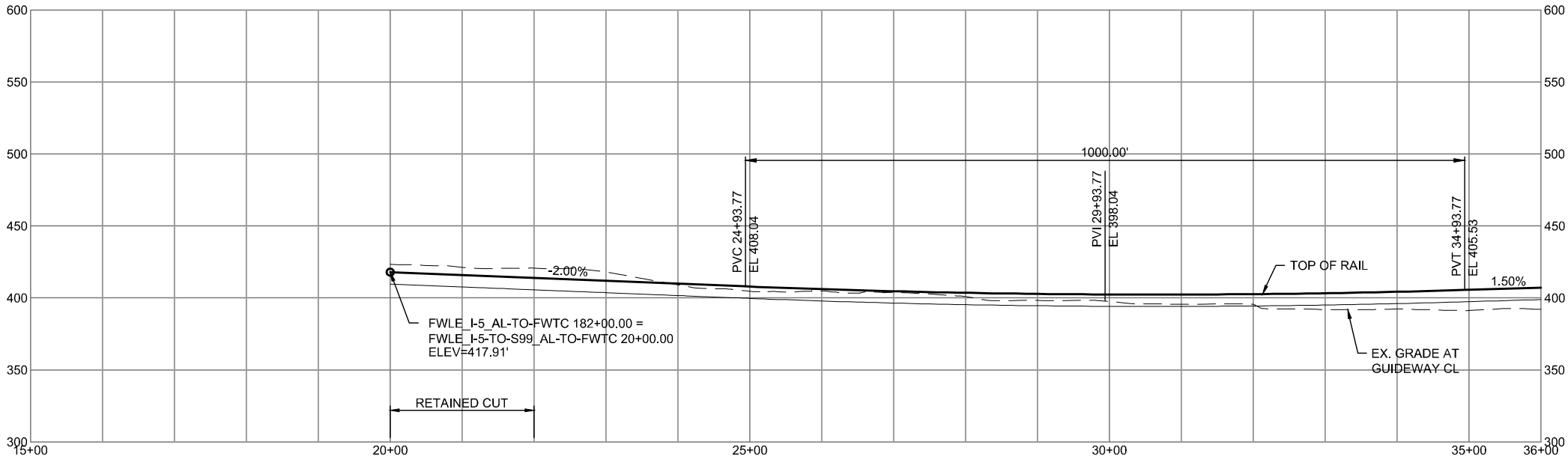
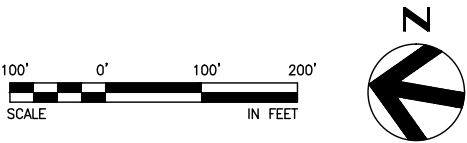
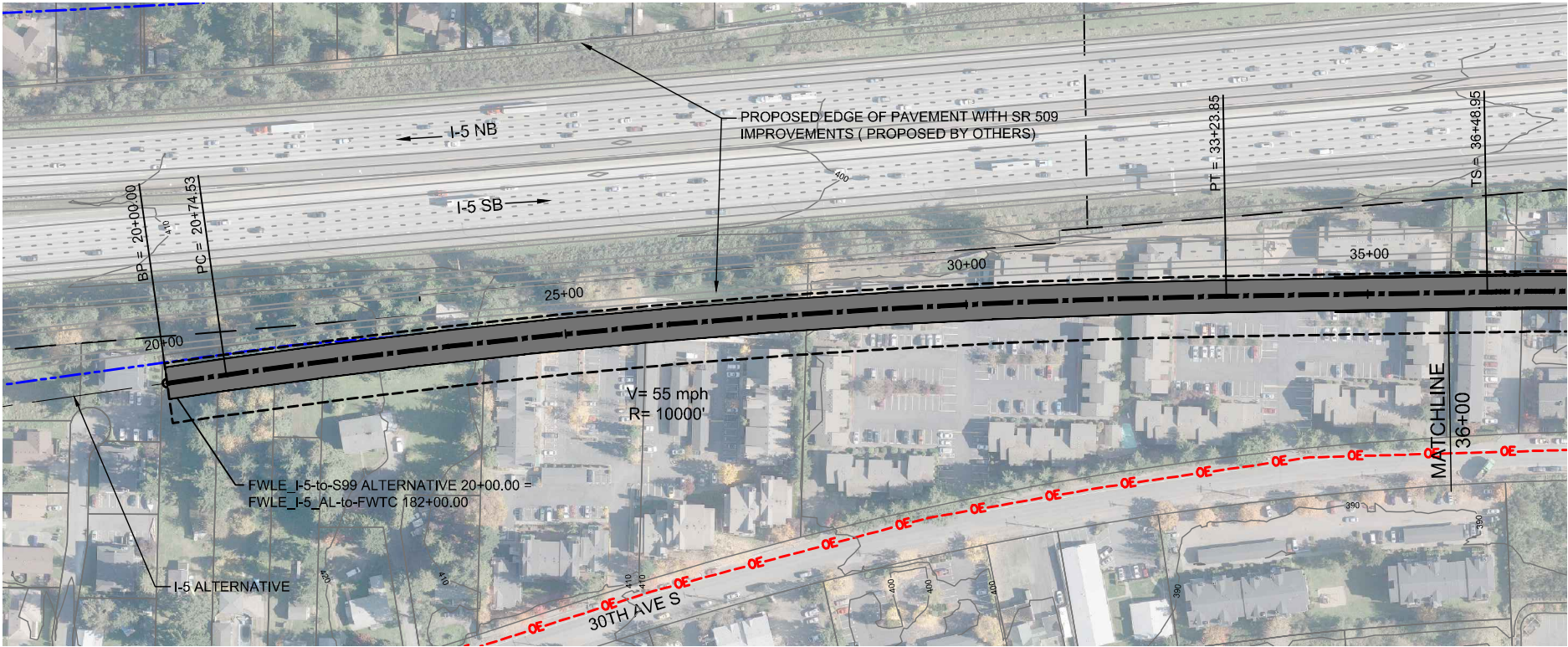
SOUND TRANSIT FEDERAL WAY LINK EXTENSION



| I-5 TO SR99 SHEET LAYOUT MATRIX | | | | |
|---|---|---|---|---|
| | 1 | 2 | 3 | 4 |
| P - I-5 TO SR 99 ALTERNATIVE | X | X | X | X |
| R - I-5 TO SR 99 260TH WEST STATION OPTION (POTENTIAL ADDITIONAL STATION) | | | X | X |



SOUND TRANSIT FEDERAL WAY LINK EXTENSION



2/25/2015 1:47:32 PM
C:\P\WORKING\SEAD\07842P FWLE I-5 TO SR99.DWG

BRHARRIS

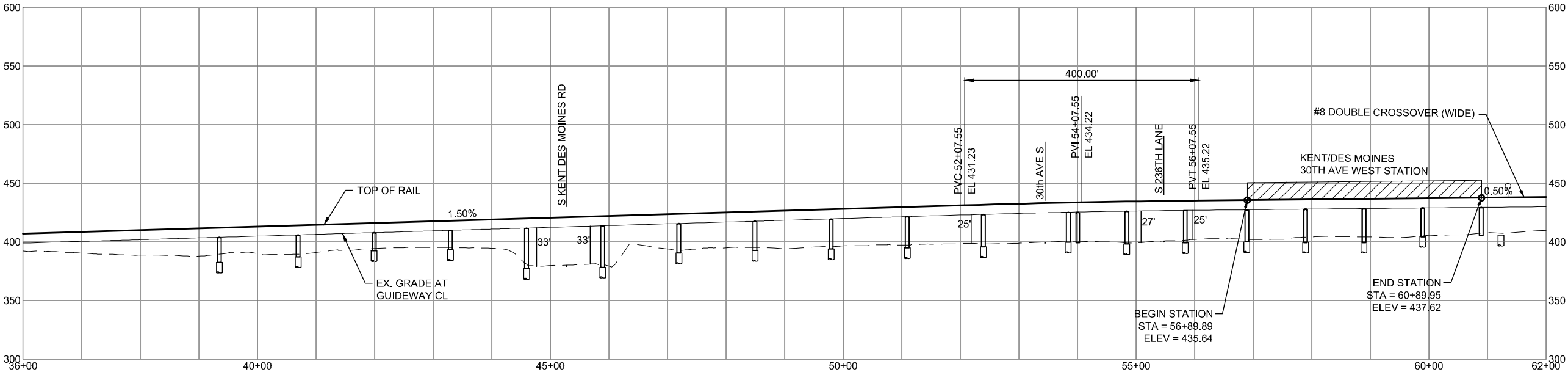
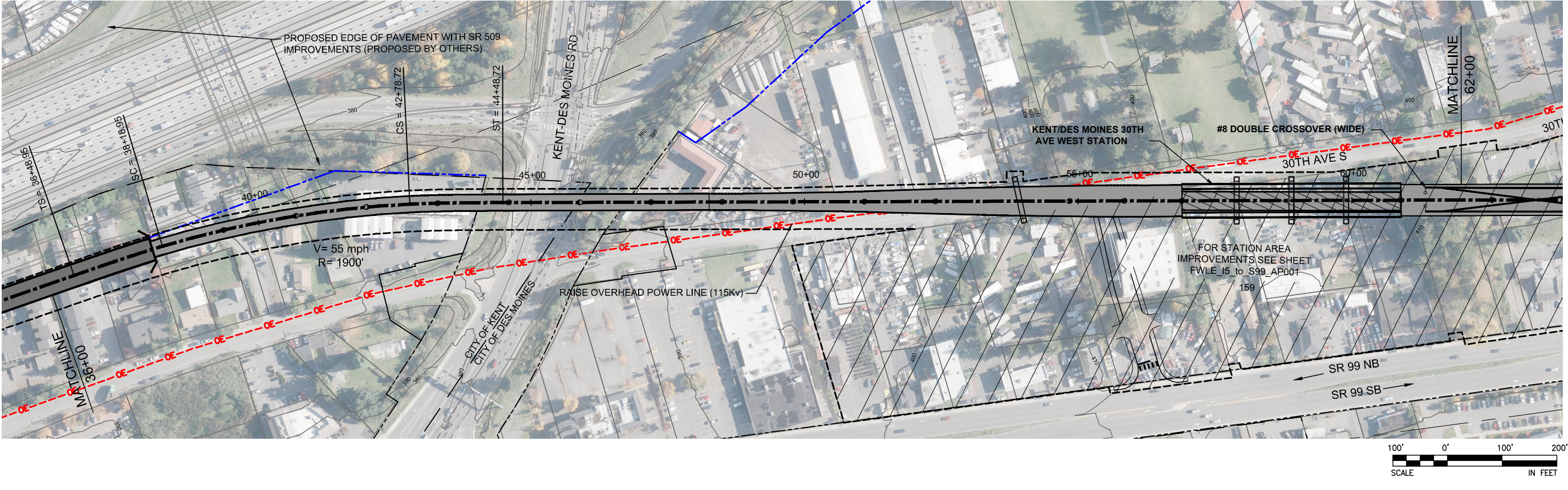


DRAFT EIS - CONCEPTUAL DESIGN
TRACK PLAN AND PROFILE AND ROADWAY RECONSTRUCTION
I-5 TO SR 99 ALTERNATIVE
STA 20+00 TO STA 36+00

APRIL 2015

I5-P1-PP01
155

SOUND TRANSIT FEDERAL WAY LINK EXTENSION



2/25/2015 1:47:42 PM
C:\PWORKING\SEAD\07842P FWLE 15 TO SR99.DWG

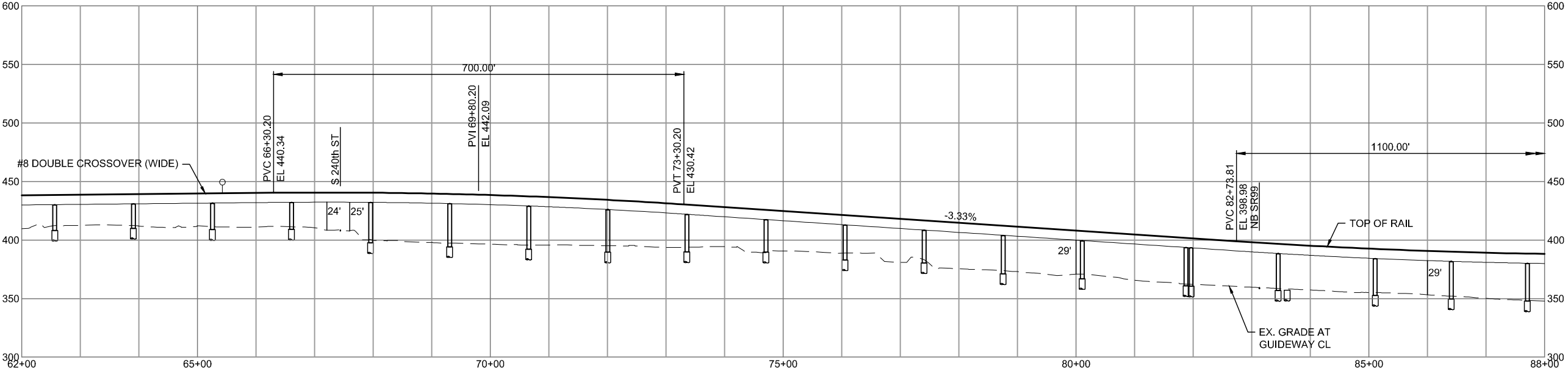
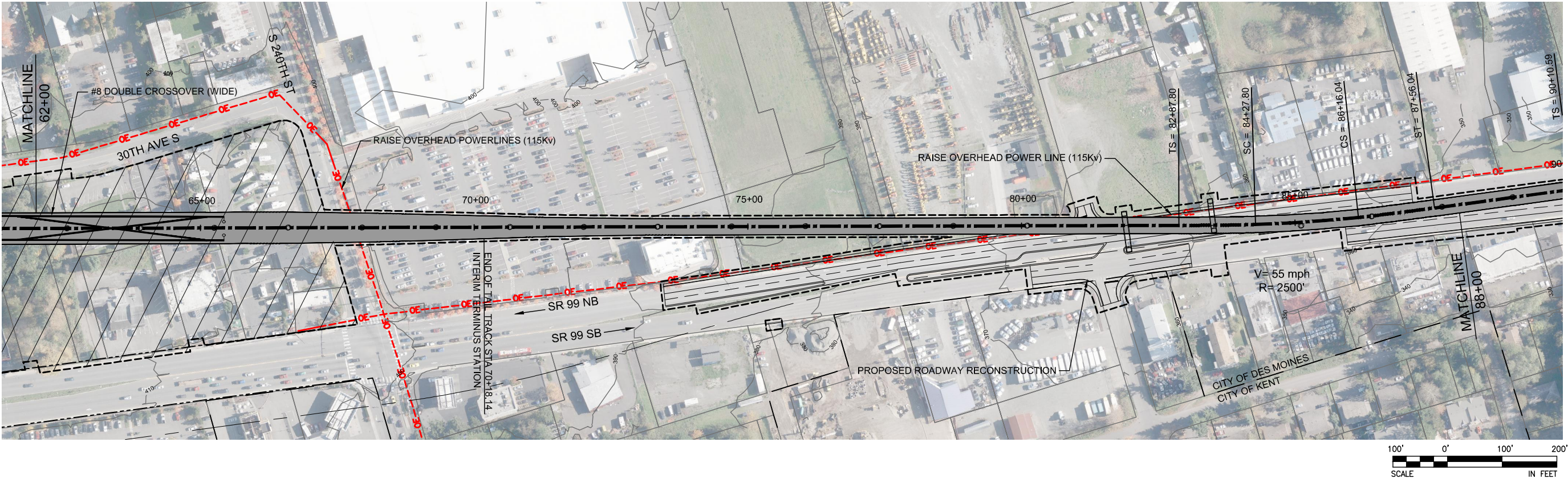


DRAFT EIS - CONCEPTUAL DESIGN
TRACK PLAN AND PROFILE AND ROADWAY RECONSTRUCTION
I-5 TO SR 99 ALTERNATIVE
STA 36+00 TO STA 62+00

APRIL 2015

I5-P2-PP02
156

SOUND TRANSIT FEDERAL WAY LINK EXTENSION



2/25/2015 1:47:51 PM
C:\PWORKING\SEAD\07842P_P\FILE 15 TO SR99.DWG

BRHARRIS

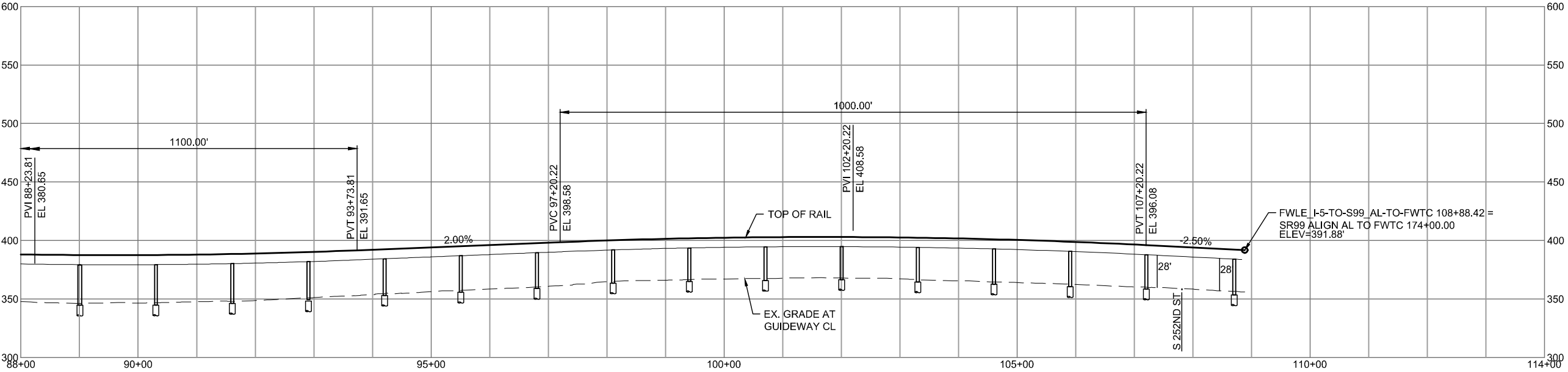


DRAFT EIS - CONCEPTUAL DESIGN
TRACK PLAN AND PROFILE AND ROADWAY RECONSTRUCTION
I-5 TO SR 99 ALTERNATIVE
STA 62+00 TO STA 88+00

APRIL 2015

I5-P3-PP03
157

SOUND TRANSIT FEDERAL WAY LINK EXTENSION



2/25/2015 1:48:00 PM
C:\WORKING\SEAD\07842P_P\FILE 15 TO SR99.DWG

BRHARRIS

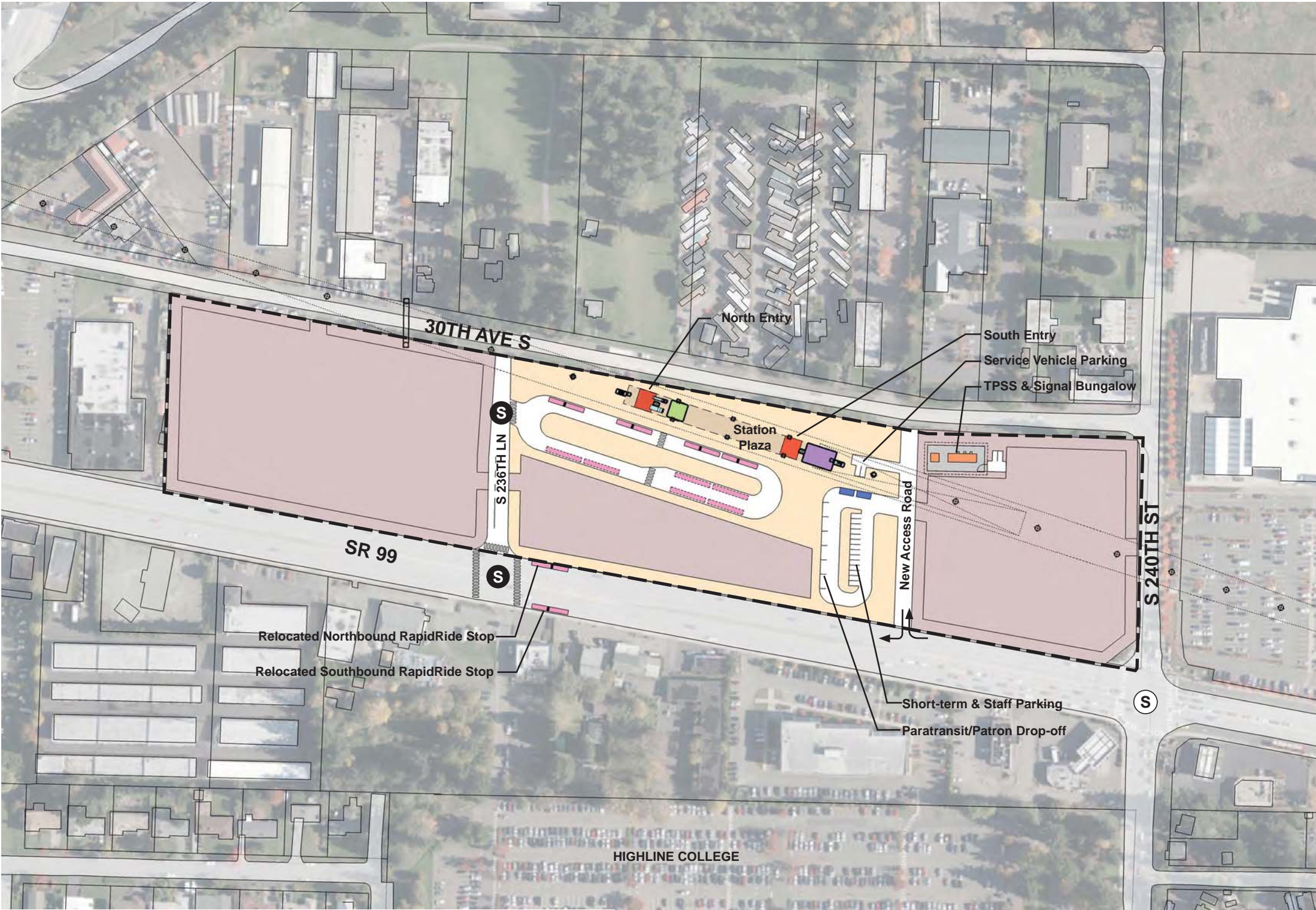


DRAFT EIS - CONCEPTUAL DESIGN
TRACK PLAN AND PROFILE AND ROADWAY RECONSTRUCTION
I-5 TO SR 99 ALTERNATIVE
STA 88+00 TO STA 108+83.60

APRIL 2015

I5-P4-PP04
158

SOUND TRANSIT FEDERAL WAY LINK EXTENSION



- STATION PLAZA

VERTICAL CIRCULATION

TICKETING / ENTRY HALL

PLATFORM

ANCILLARY SPACES

TPSS
- BUS LAYOVER

BUS PICK-UP / DROP OFF

PARATRANSIT

BICYCLE STORAGE

CONSTRUCTION STAGING / PARKING

- STATION AREA FOOTPRINT
- S

SIGNALIZED INTERSECTION (EXISTING)
- S

SIGNALIZED INTERSECTION (PROPOSED)

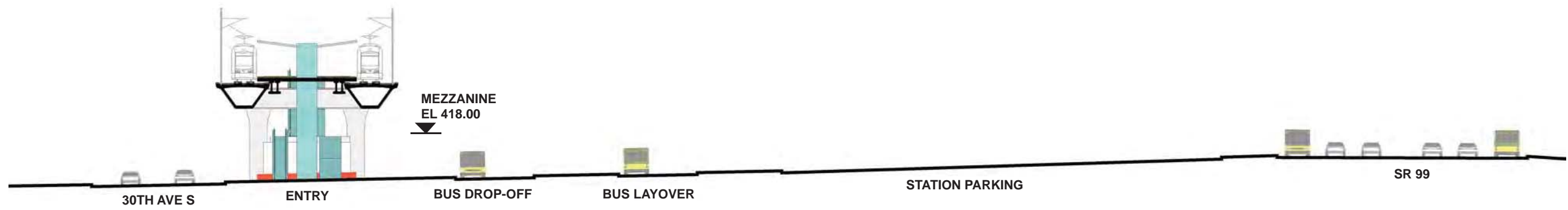


ASSUMPTIONS:

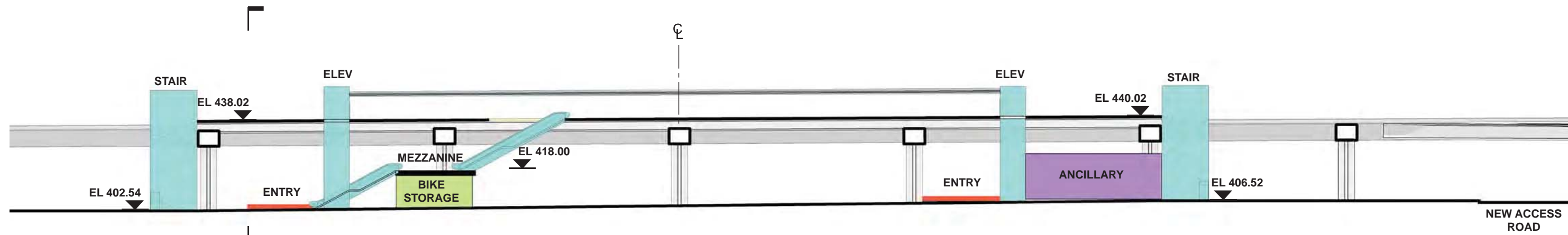
| Kent/Des Moines 30th Avenue West Station | |
|--|------------------------------|
| Alternative(s) | I-5 to SR 99 |
| Boardings | 2,500 |
| Boardings (interim terminus) | 4,500 |
| Station Configuration | |
| Terminus / In-Line | Interim Terminus |
| Station Type | Center Platform - Elevated |
| Platform Width | 34' |
| Tail track | 900' |
| Crossover | Yes |
| TPSS | Yes |
| Program | |
| KC Metro Ancillary Spaces (SF) | 200 |
| ST Ancillary Spaces (SF) | 1,800 |
| Total Ancillary Spaces (SF) | 2,000 |
| Vertical Circulation | |
| # of entrances | 2 |
| # of escalators | 2 |
| # of staircases (patron) | 2 |
| # of elevators | 2 |
| # of emergency stairs | 2 |
| Bus/Paratransit Facilities | |
| Bus bays (KCM) | 2 bays, one 60' coach each |
| Bus bays (ST) | 1 bay, two 60' coaches |
| Rapid Ride | On-street at SR 99 |
| Bus layover (KCM) | 2 bays, two 60' coaches each |
| Bus layover (ST) | 1 bay, two 60' coaches |
| Paratransit spaces | 1 permanent, 1 interim |
| Communications Facility | Tier 2 |
| Parking & Amenities | |
| Bike storage | 900 SF |
| Patron drop-off | 6 spaces |
| Short-term patron parking | 7 to 10 spaces |
| Staff parking | 4 spaces |
| Service/emerg. vehicle park. | 2 spaces, separate lot |
| Signal bungalow / TPSS park. | 2 spaces, dedicated |
| Long-term patron parking | 500 spaces (structure) |
| Temporary patron parking* | 500 spaces (surface) |
| Total proposed patron parking* | 1000 Spaces |

*Only required for interim terminus condition

SOUND TRANSIT FEDERAL WAY LINK EXTENSION

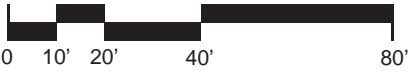


SECTION LOOKING SOUTH



SECTION LOOKING EAST

- | | |
|------------------------|--------------------------------|
| STATION PLAZA | BUS LAYOVER |
| VERTICAL CIRCULATION | BUS PICK-UP / DROP OFF |
| TICKETING / ENTRY HALL | PARATRANSIT |
| PLATFORM | BICYCLE STORAGE |
| ANCILLARY SPACES | CONSTRUCTION STAGING / PARKING |
| TPSS | |



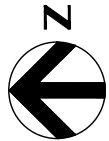
7/17/2014 11:26:52 AM JHAMMERQUIST G:\BWA PROJECTS\67612 FEDERAL WAY TRANSIT EXTENSION\2 CLIENT\2 DATA\INCOMING HDR\40717 UPDATED TITLEBLOCKS\TTLBKK.DWG



SOUND TRANSIT FEDERAL WAY LINK EXTENSION



| I-5 TO SR99 SHEET LAYOUT MATRIX | | | | |
|---|---|---|---|---|
| | 1 | 2 | 3 | 4 |
| P - I-5 TO SR 99 ALTERNATIVE | X | X | X | X |
| R - I-5 TO SR 99 260TH WEST STATION OPTION (POTENTIAL ADDITIONAL STATION) | | | X | X |



2/25/2015 12:15:29 PM
C:\P\WORKING\SEAD\078401-FA0-GX02.DWG

BRHARRIS



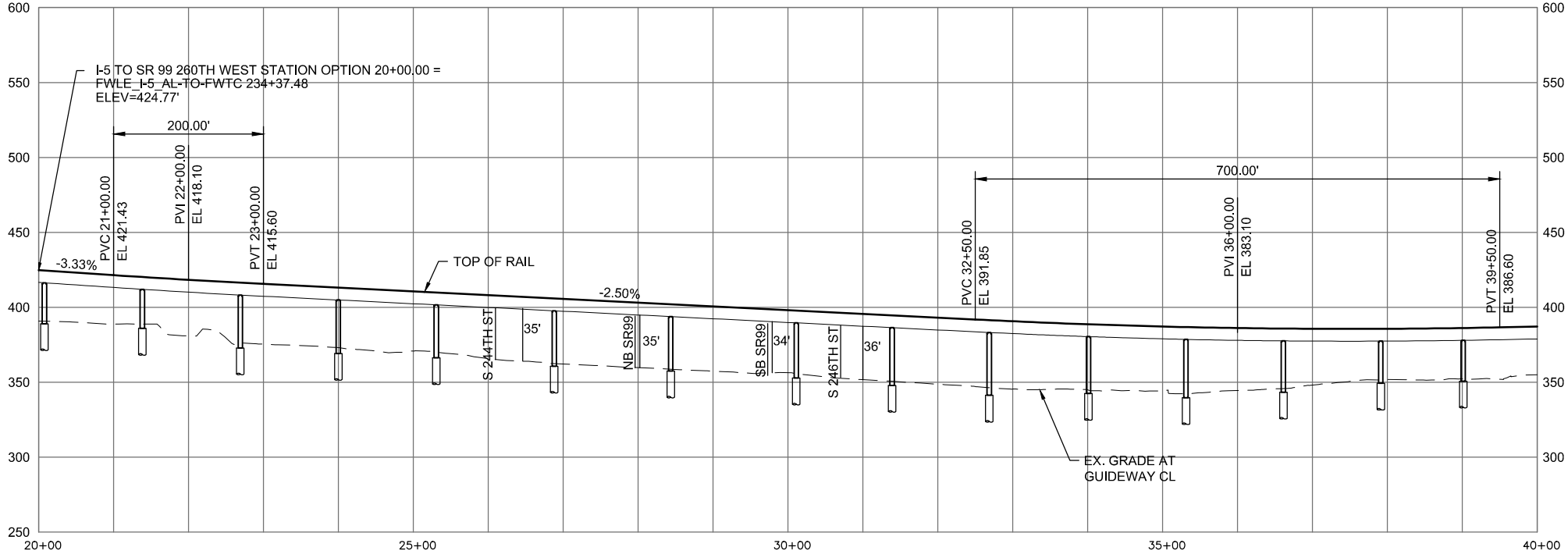
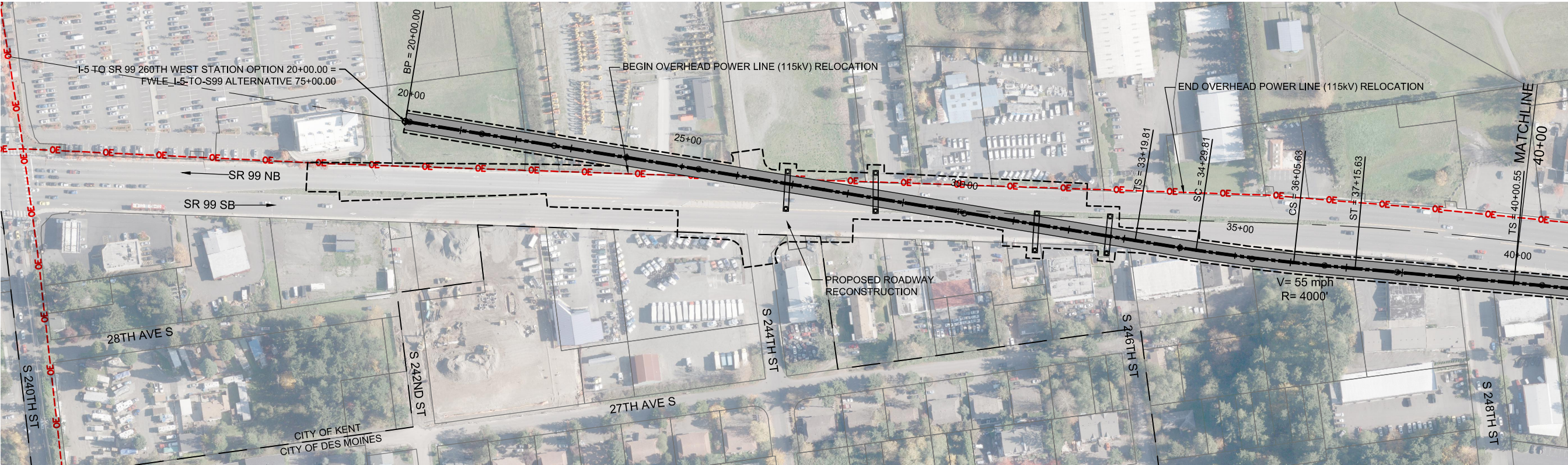
DRAFT EIS - CONCEPTUAL DESIGN
SHEET INDEX KEY MAP

I-5 TO SR 99 206TH WEST STATION OPTION (POTENTIAL ADDITIONAL STATION)

APRIL 2015

I5-R00-GX02
161

SOUND TRANSIT FEDERAL WAY LINK EXTENSION



2/25/2015 5:08:38 PM
C:\PWORKING\SEAD\07842R_I-5 TO S260TH WEST STATION.DWG



DRAFT EIS - CONCEPTUAL DESIGN

TRACK PLAN AND PROFILE & ROADWAY RECONSTRUCTION

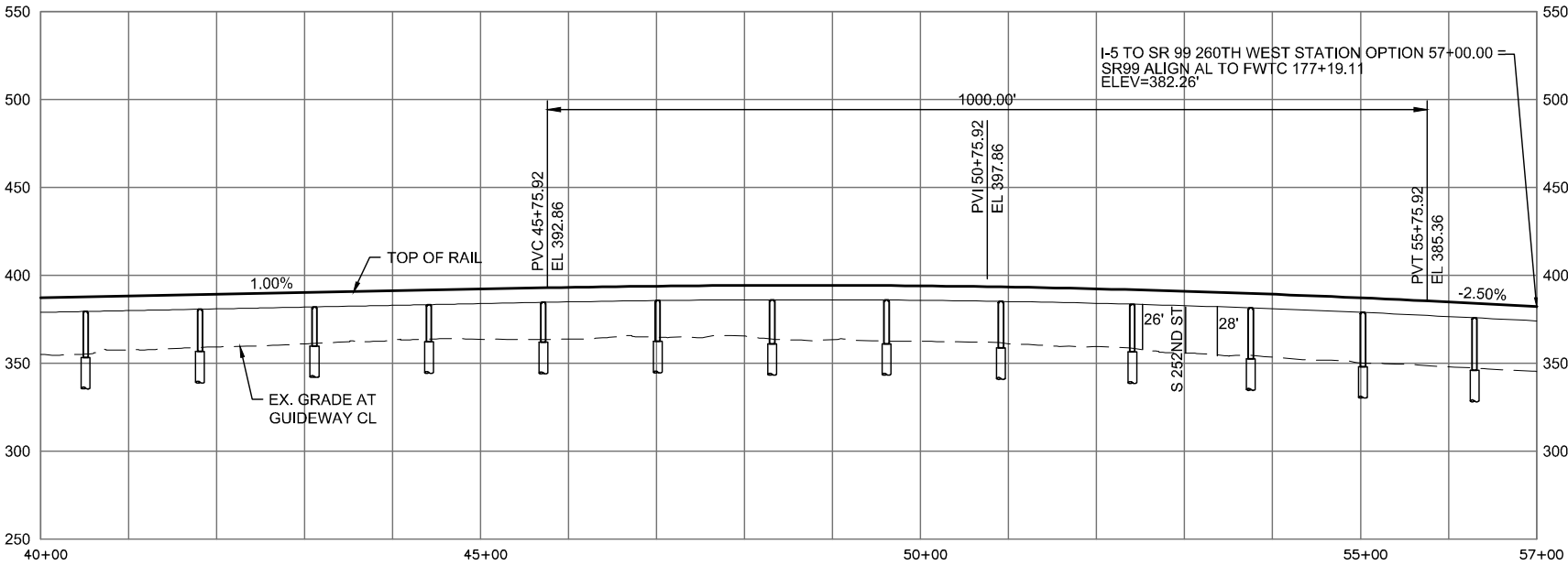
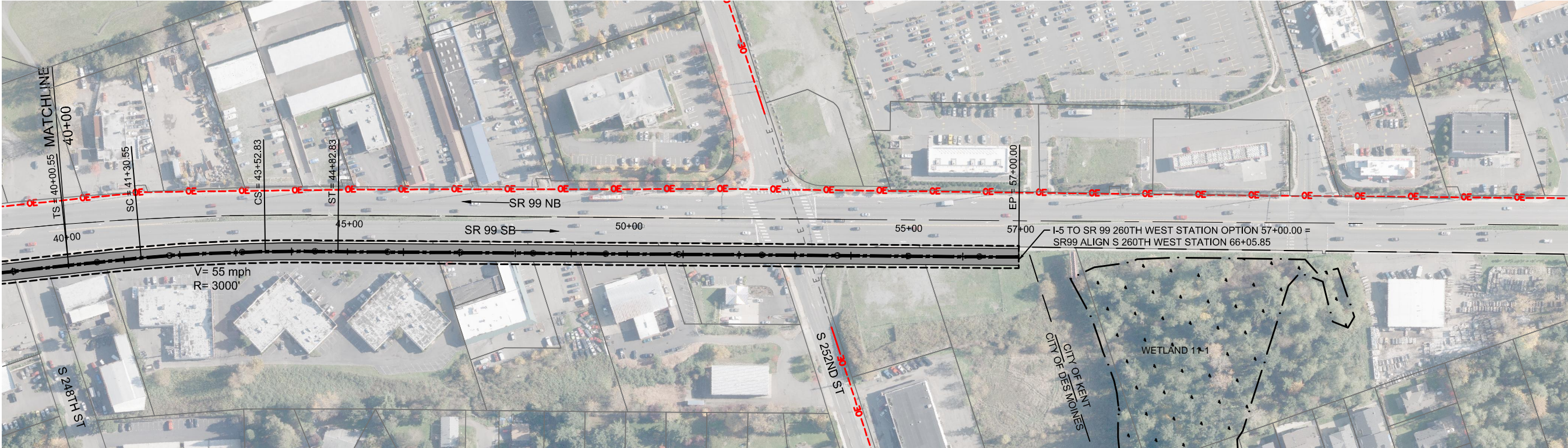
I-5 TO SR 99 260TH WEST STATION OPTION (POTENTIAL ADDITIONAL STATION)

STA 20+00 TO STA 40+00

APRIL 2015

I5-R01-PP01
162

SOUND TRANSIT FEDERAL WAY LINK EXTENSION



2/25/2015 3:45:27 PM C:\WORKING\BEND\07842R I-5 TO S260TH WEST STATION.DWG



DRAFT EIS - CONCEPTUAL DESIGN
TRACK PLAN AND PROFILE & ROADWAY RECONSTRUCTION
I-5 TO SR 99 260TH WEST STATION OPTION (POTENTIAL ADDITIONAL STATION)
STA 40+00 TO STA 57+00

APRIL 2015

I5-R02-PP02
163