

Federal Way Link Extension

Draft Environmental Impact Statement

NOISE AND VIBRATION TECHNICAL REPORT

Appendix G3



This page intentionally left blank.



Federal Way Link Extension

Noise and Vibration Technical Report

Prepared for:
Sound Transit

Prepared by:
HDR Inc.
Michael Minor & Associates, Inc.
ATS Consulting
CH2M HILL

April 2015

This page intentionally left blank.



Photo 1: Aerial View



Photo 2: Looking southeast from SR 99



Photo 3: Looking southwest



Photo 4: Looking at the intersection of SR 99 and S 204th Street

Monitoring Location M-1
20406 Pacific Hwy. S. (Sleep Inn)
SeaTac, Washington



Michael Minor & Associates
Sound.Vibration.Air
Portland, Oregon

Figure 1
Noise Monitoring Locations
Federal Way Extension

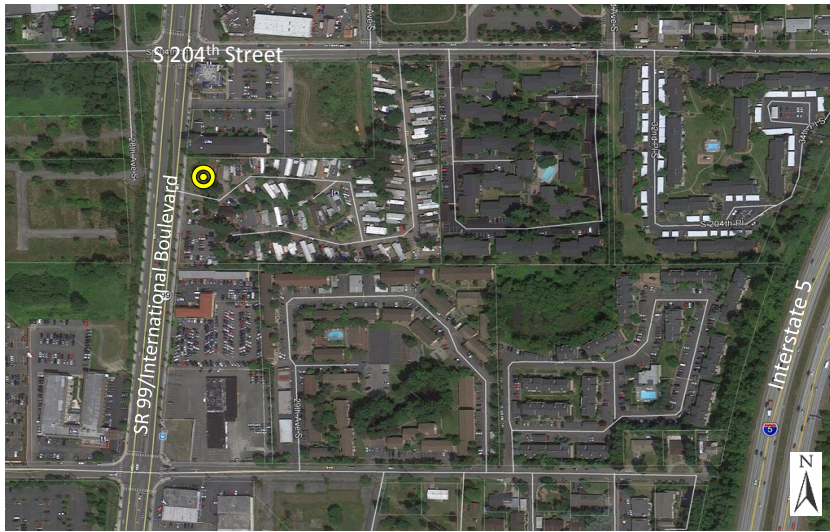


Photo 1: Aerial View



Photo 2: Looking northwest at SR 99



Photo 3: Looking southeast



Photo 4: Looking northeast from the park entrance

Monitoring Location M-2
20440 Int'l Blvd (The Firs Mobile Home Park)
SeaTac, Washington



Michael Minor & Associates
Sound.Vibration.Air
Portland, Oregon

Figure 2
Noise Monitoring Locations
Federal Way Extension



Photo 1: Aerial View



Photo 2: Looking northwest across S 208th Street



Photo 3: Looking east down S 208th Street towards I-5



Photo 4: Looking west down S 208th Street towards SR 99

Monitoring Location M-3
3002 S 208th St. (Willow Lake Apts.)
SeaTac, Washington



Michael Minor & Associates
Sound.Vibration.Air
Portland, Oregon

Figure 3
Noise Monitoring Locations
Federal Way Extension



Photo 1: Aerial View



Photo 2: Looking east towards I-5 at end of S 211th Street



Photo 3: Looking south across S 211th Street



Photo 4: Looking west down S 211th Street

Monitoring Location M-4
WSDOT ROW near 3120 S 211th St.
SeaTac, Washington



Michael Minor & Associates
Sound.Vibration.Air
Portland, Oregon

Figure 4
Noise Monitoring Locations
Federal Way Extension



Photo 1: Aerial View



Photo 2: Looking north towards along right of way fence line



Photo 3: Looking east towards I-5



Photo 4: Looking south from down 32nd Avenue S

Monitoring Location M-5
WS.DOT ROW near 21211 32nd Ave. S.
SeaTac, Washington



Michael Minor & Associates
Sound.Vibration.Air
Portland, Oregon

Figure 5
Noise Monitoring Locations
Federal Way Extension



Photo 1: Aerial View



Photo 2: Looking west across 31st Avenue S

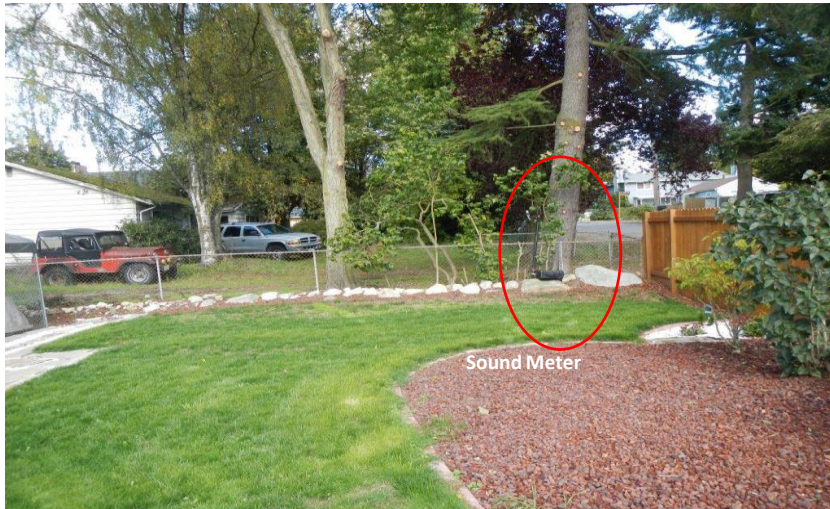


Photo 3: Looking north



Photo 4: Looking southwest

Monitoring Location M-6
21815 31st Ave. S
Des Moines, Washington



Michael Minor & Associates
Sound.Vibration.Air
Portland, Oregon

Figure 6
Noise Monitoring Locations
Federal Way Extension



Photo 1: Aerial View

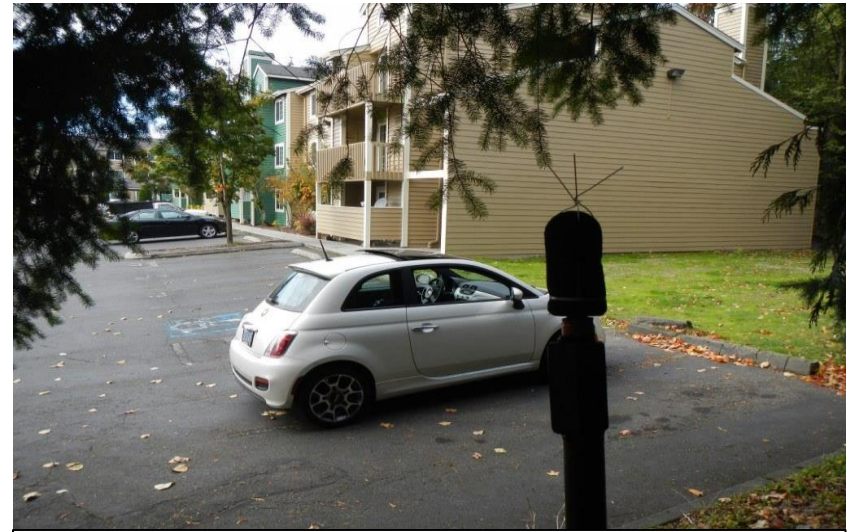


Photo 2: Looking northwest



Photo 3: Looking west



Photo 4: Looking southeast towards I-5

Monitoring Location M-7 Back
22700 30th Ave. S. (Newport Village Condominiums)
Des Moines, Washington



Michael Minor & Associates
Sound.Vibration.Air
Portland, Oregon

Figure 7
Noise Monitoring Locations
Federal Way Extension



Photo 1: Aerial View



Photo 2: Looking northeast

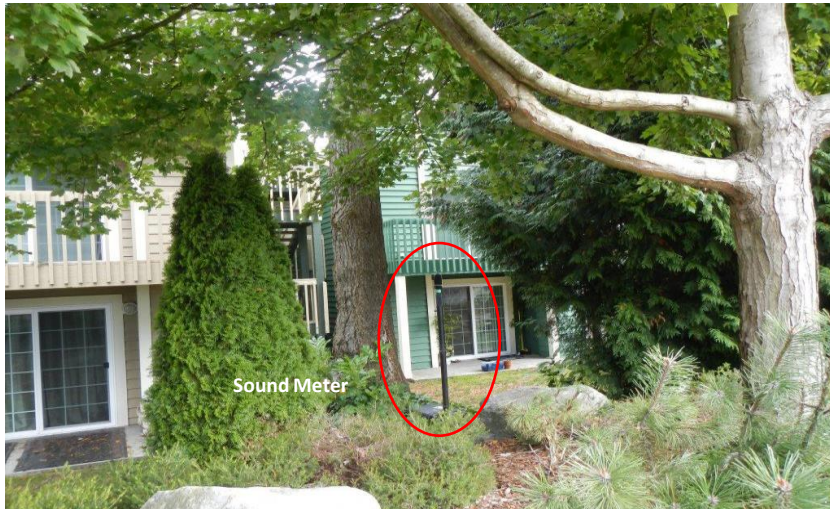


Photo 3: Looking southeast



Photo 4: Looking northwest towards 30th Avenue S

Monitoring Location M-7 Front
22700 30th Ave. S. (Newport Village Condominiums)
Des Moines, Washington



Michael Minor & Associates
Sound.Vibration.Air
Portland, Oregon

Figure 8
Noise Monitoring Locations
Federal Way Extension

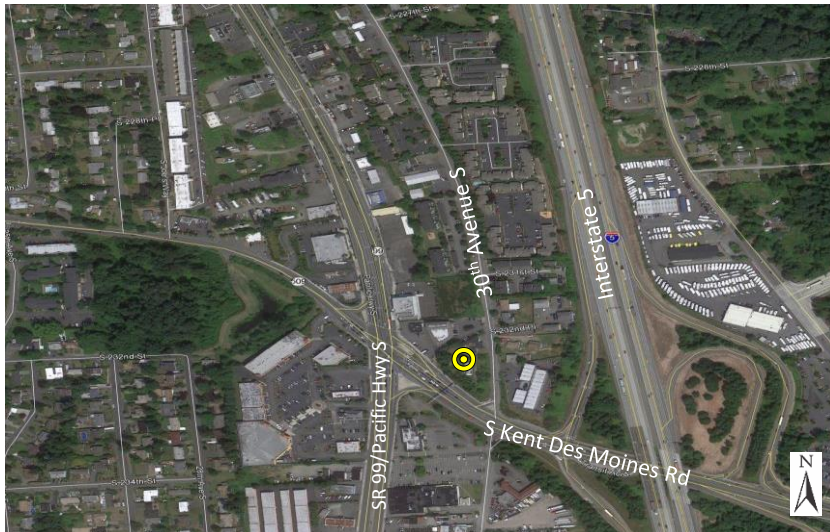


Photo 1: Aerial View



Photo 2: Looking northwest



Photo 3: Looking southwest



Photo 4: Looking northeast

Monitoring Location M-8
23215 30th Ave. S
Des Moines, Washington



Michael Minor & Associates
Sound.Vibration.Air
Portland, Oregon

Figure 9
Noise Monitoring Locations
Federal Way Extension

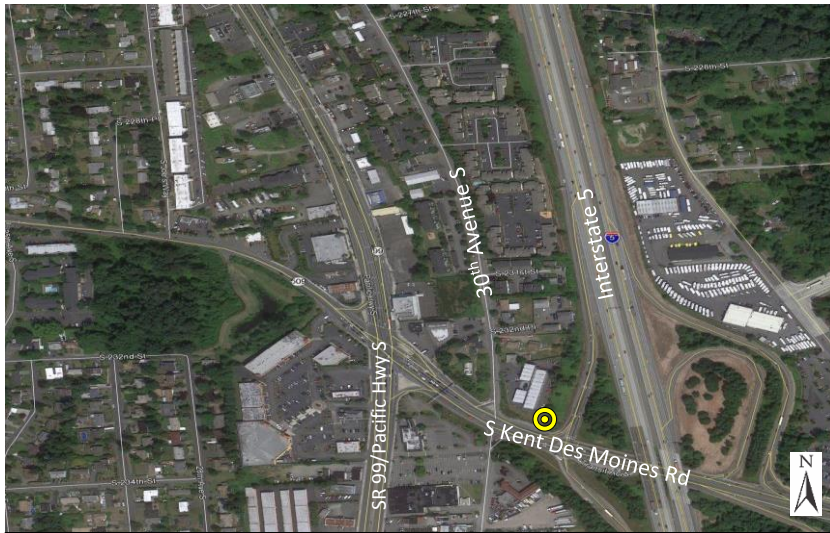


Photo 1: Aerial View



Photo 2: Looking west



Photo 3: Looking northwest



Photo 4: Looking southeast towards I-5

Monitoring Location M-9
WSDOT ROW near King's Arms Motel
Des Moines, Washington



Michael Minor & Associates
Sound.Vibration.Air
Portland, Oregon

Figure 10
Noise Monitoring Locations
Federal Way Extension



Photo 1: Aerial View

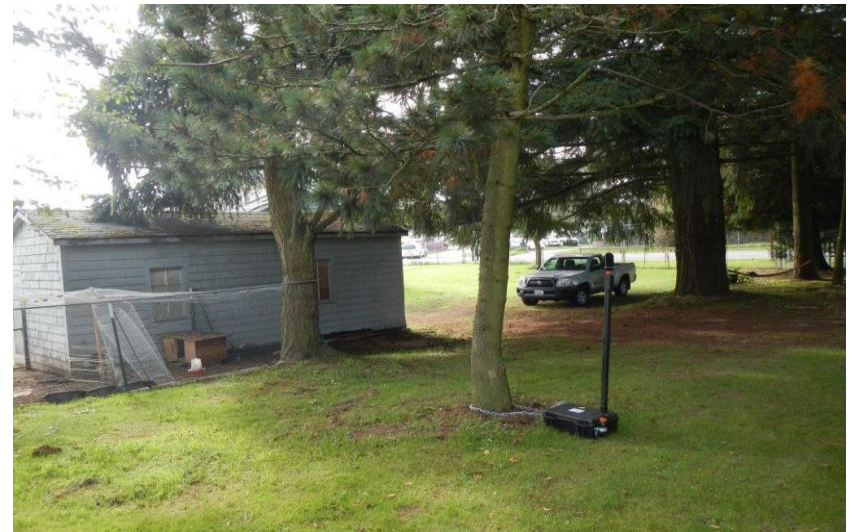


Photo 2: Looking southwest at 30th Avenue S



Photo 3: Looking northwest at 30th Avenue S



Photo 4: Looking east church and I-5

Monitoring Location M-10
23634 30th Ave. S (Park of the Pines - Homes)
Kent, Washington



Michael Minor & Associates
Sound.Vibration.Air
Portland, Oregon

Figure 11
Noise Monitoring Locations
Federal Way Extension



Photo 1: Aerial View



Photo 2: Looking northeast at the church



Photo 3: Looking southeast at I-5



Photo 4: Looking west towards 30th Avenue S

Monitoring Location M-10A
23634 30th Ave. S. (Park of the Pines - Church)
Kent, Washington



Michael Minor & Associates
Sound.Vibration.Air
Portland, Oregon

Figure 12
Noise Monitoring Locations
Federal Way Extension



Photo 1: Aerial View



Photo 2: Looking west at 30th Ave S.

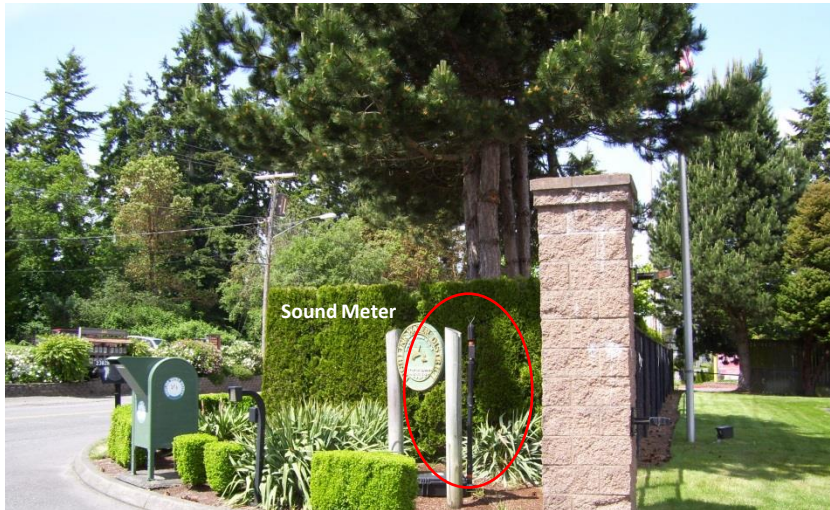


Photo 3: Looking north



Photo 4: Looking southeast

Monitoring Location M-11
23828 30th Ave. S.
Kent, Washington



Michael Minor & Associates
Sound.Vibration.Air
Portland, Oregon

Figure 13
Noise Monitoring Locations
Federal Way Extension

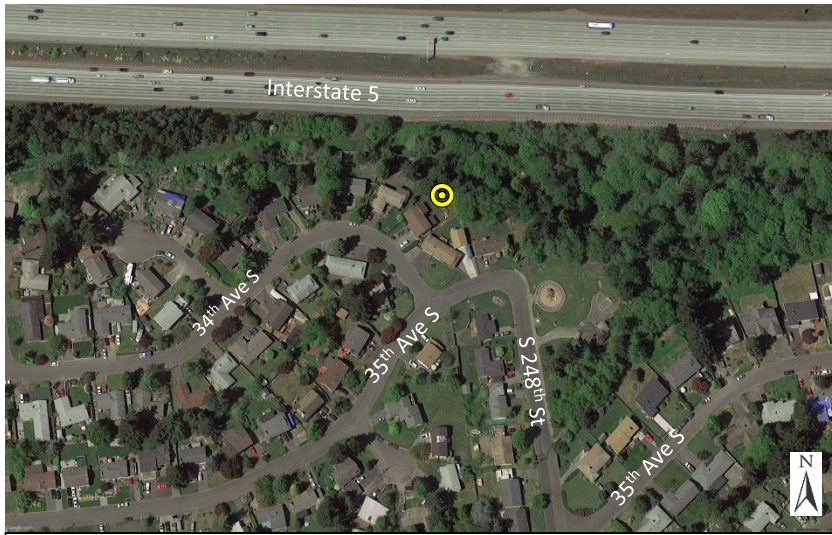


Photo 1: Aerial View



Photo 2: Looking north toward I-5



Photo 3: Looking east



Photo 4: Looking Northeast toward I-5

Monitoring Location M-12
3320 S 248th Pl.
Kent, Washington



Michael Minor & Associates
Sound.Vibration.Air
Portland, Oregon

Figure 14
Noise Monitoring Locations
Federal Way Extension

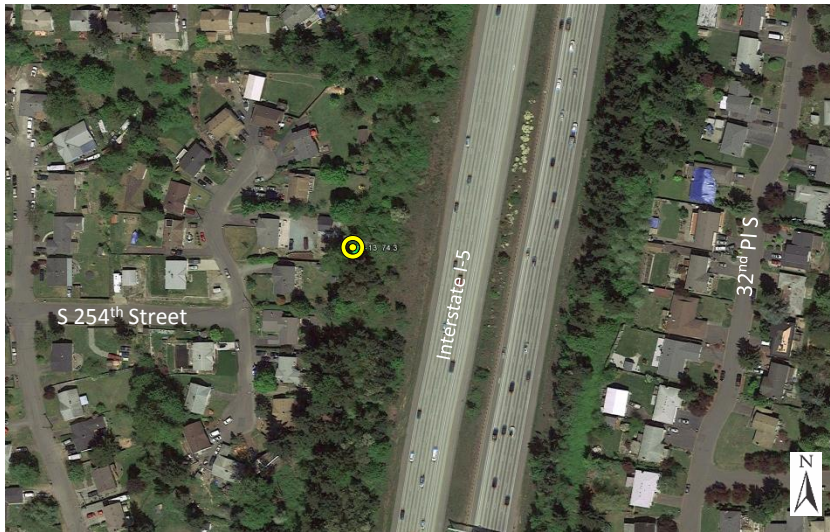


Photo 1: Aerial View



Photo 2: Looking east toward I-5



Photo 3: Looking northwest



Photo 4: Looking southwest

Monitoring Location M-13
25338 31st Ave S.
Kent, Washington



Michael Minor & Associates
Sound.Vibration.Air
Portland, Oregon

Figure 15
Noise Monitoring Locations
Federal Way Extension

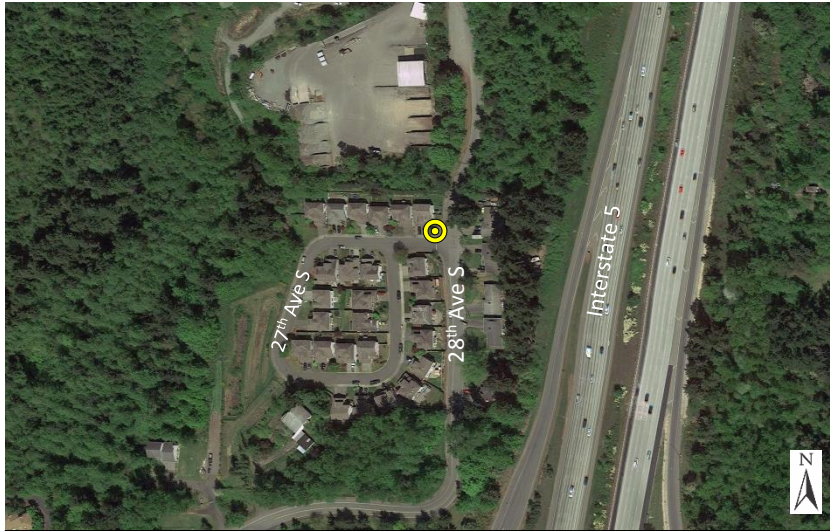


Photo 1: Aerial View



Photo 2: Looking northwest



Photo 3: Looking southwest toward S 268th Pl.



Photo 4: Looking south down 28th Ave S.

Monitoring Location M-15
2728 S 268th Pl.
Kent, Washington



Michael Minor & Associates
Sound.Vibration.Air
Portland, Oregon

Figure 16
Noise Monitoring Locations
Federal Way Extension