

Federal Way Link Extension

Draft Environmental Impact Statement

NOISE AND VIBRATION TECHNICAL REPORT

Appendix G3



This page intentionally left blank.



Federal Way Link Extension

Noise and Vibration Technical Report

Prepared for:
Sound Transit

Prepared by:
HDR Inc.
Michael Minor & Associates, Inc.
ATS Consulting
CH2M HILL

April 2015

This page intentionally left blank.



Photo 1: Aerial View



Photo 2: Looking north toward S 272nd



Photo 3: Looking south toward Mark Twain Elementary



Photo 4: Looking northeast toward I-5

Monitoring Location M-16
2450 S. Star Lake Rd. (Mark Twain Elementary School)
Federal Way, Washington



Michael Minor & Associates
Sound.Vibration.Air
Portland, Oregon

Figure 17
Noise Monitoring Locations
Federal Way Extension

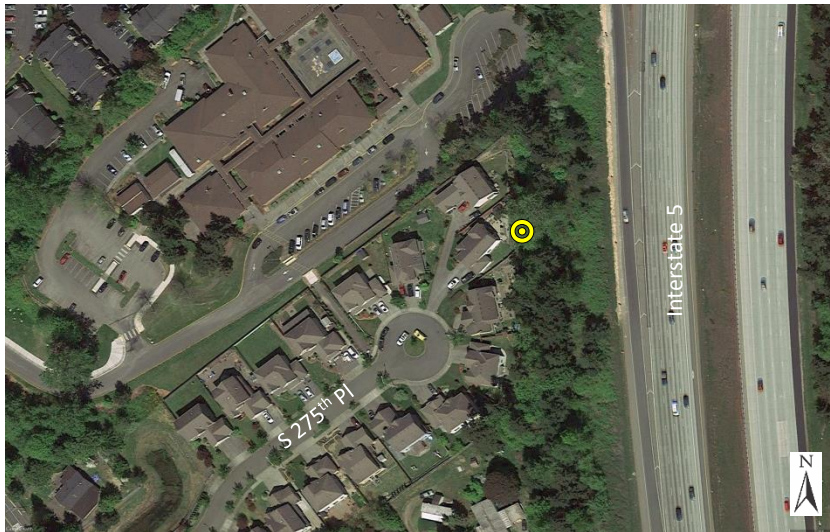


Photo 1: Aerial View



Photo 2: Looking south



Photo 3: Looking north



Photo 4: Looking east toward I-5

Monitoring Location M-17
2720 S 275th Pl.
Federal Way, Washington



Michael Minor & Associates
Sound.Vibration.Air
Portland, Oregon

Figure 18
Noise Monitoring Locations
Federal Way Extension



Photo 1: Aerial View



Photo 2: Looking north



Photo 3: Looking southwest toward 29th Ave S.



Photo 4: Looking east toward I-5

Monitoring Location M-19
28118 29th Ave
Federal Way, Washington



Michael Minor & Associates
Sound.Vibration.Air
Portland, Oregon

Figure 19
Noise Monitoring Locations
Federal Way Extension

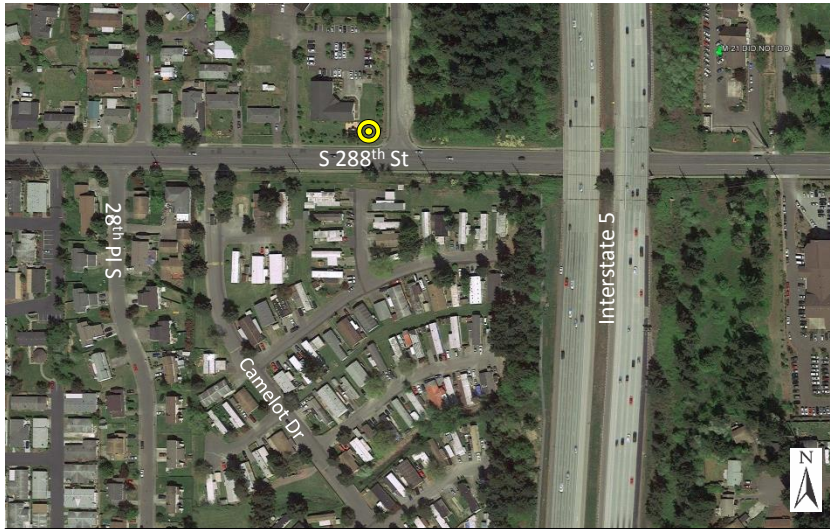


Photo 1: Aerial View



Photo 2: Looking southeast toward I-5



Photo 3: Looking northeast



Photo 4: Looking southwest

Monitoring Location M-22
2920 S. 288th St. (Kumran Methodist Church)
Federal Way, Washington



Michael Minor & Associates
Sound.Vibration.Air
Portland, Oregon

Figure 20
Noise Monitoring Locations
Federal Way Extension



Photo 1: Aerial View



Photo 2: Looking east toward I-5



Photo 3: Looking southwest down Sir Galahad Ct.



Photo 4: Looking west

Monitoring Location M-23 North
3001 S. 288th St. (End of Sir Galahad Ct. in Camelot
Square Mobile Home Park) Federal Way, Washington



Michael Minor & Associates
Sound.Vibration.Air
Portland, Oregon

Figure 21
Noise Monitoring Locations
Federal Way Extension

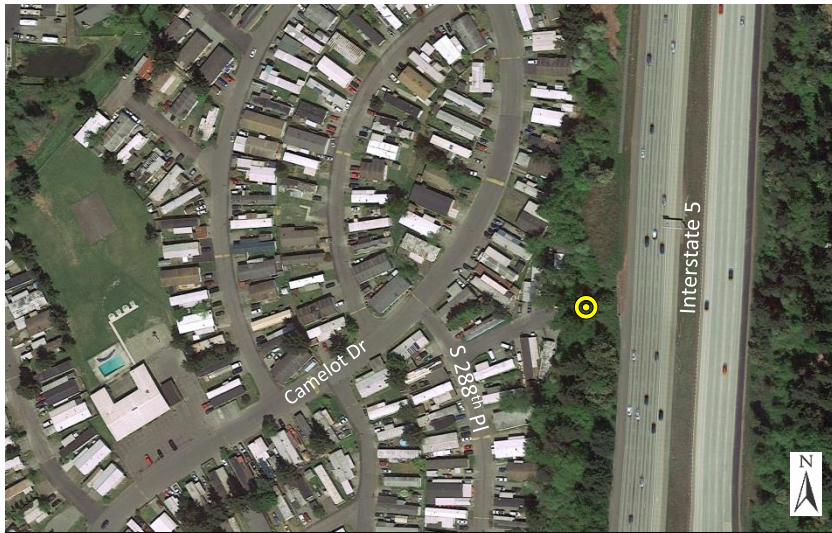


Photo 1: Aerial View



Photo 2: Looking northeast toward I-5



Photo 3: Looking south



Photo 4: Looking southwest down 288th St.

Monitoring Location M-23 South
3001 S. 288th St. (223 Canterbury Drive in Camelot
Square Mobile Home Park) Federal Way, Washington



Michael Minor & Associates
Sound.Vibration.Air
Portland, Oregon

Figure 22
Noise Monitoring Locations
Federal Way Extension



Photo 1: Aerial View



Photo 2: Looking southwest



Photo 3: Looking east toward I-5



Photo 4: Looking north

Monitoring Location M-25
30012 Military Rd. (Church of Christ at Federal Way)
Federal Way, Washington



Michael Minor & Associates
Sound.Vibration.Air
Portland, Oregon

Figure 23
Noise Monitoring Locations
Federal Way Extension



Photo 1: Aerial View



Photo 2: Looking east toward I-5



Photo 3: Looking west toward 2833 S 308th Ln



Photo 4: Looking southeast toward I-5

Monitoring Location M-27
2833 S. 308th Lane (Studio)
Federal Way, Washington



Michael Minor & Associates
Sound.Vibration.Air
Portland, Oregon

Figure 24
Noise Monitoring Locations
Federal Way Extension



Photo 1: Aerial View



Photo 2: Looking east toward I-5



Photo 3: Looking west toward 2833 S 308th Ln



Photo 4: Looking north

Monitoring Location M-27A
2833 S. 308th Lane (Home)
Federal Way, Washington



Michael Minor & Associates
Sound.Vibration.Air
Portland, Oregon

Figure 25
Noise Monitoring Locations
Federal Way Extension



Photo 1: Aerial View



Photo 2: Looking northwest toward Providence Landing Apts.



Photo 3: Looking southeast toward I-5



Photo 4: Looking northeast

Monitoring Location M-28
31220 28th Ave. S. (Providence Landing Apts.)
Federal Way, Washington



Michael Minor & Associates
Sound.Vibration.Air
Portland, Oregon

Figure 26
Noise Monitoring Locations
Federal Way Extension



Photo 1: Aerial View



Photo 2: Looking east toward I-5



Photo 3: Looking west toward 28th Ave S.



Photo 4: Looking southeast

Monitoring Location M-29
31524 28th Ave S.
Federal Way, Washington



Michael Minor & Associates
Sound.Vibration.Air
Portland, Oregon

Figure 27
Noise Monitoring Locations
Federal Way Extension



Photo 1: Aerial View



Photo 2: Looking northwest toward Truman High School



Photo 3: Looking west toward I-5



Photo 4: Looking south toward the Hampton Inn

Monitoring Location M-30
31453 28th Ave. S. (Truman H.S.)
Federal Way, Washington



Michael Minor & Associates
Sound.Vibration.Air
Portland, Oregon

Figure 28
Noise Monitoring Locations
Federal Way Extension

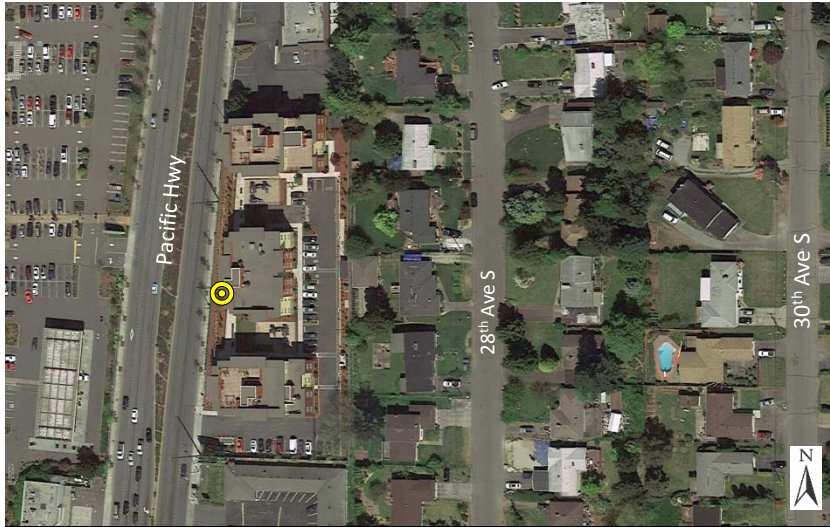


Photo 1: Aerial View



Photo 2: Looking southwest toward Pacific Highway



Photo 3: Looking southeast toward Viewpoint Apts.



Photo 4: Looking northwest toward Pacific Highway

Monitoring Location M-31
21428 Pacific Hwy. S. (Viewpoint Apts.)
Seatac, Washington



Michael Minor & Associates
Sound.Vibration.Air
Portland, Oregon

Figure 29
Noise Monitoring Locations
Federal Way Extension



Photo 1: Aerial View



Photo 2: Looking southwest toward Pacific Highway



Photo 3: Looking north

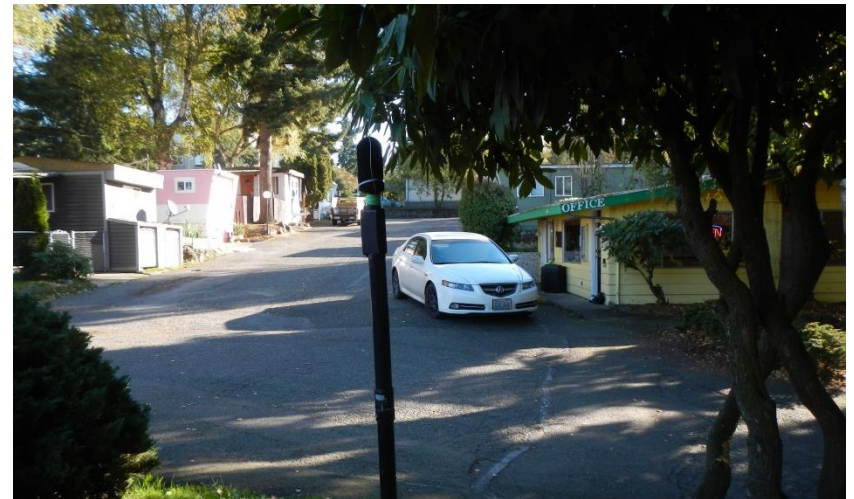


Photo 4: Looking west toward Pine Terrace Mfg. Home Park

Monitoring Location M-32
 21814 Pacific Hwy. S. (Pine Terrace Mobile Home Park)
 Des Moines, Washington



Michael Minor & Associates
 Sound.Vibration.Air
 Portland, Oregon

Figure 30
 Noise Monitoring Locations
 Federal Way Extension



Photo 1: Aerial View

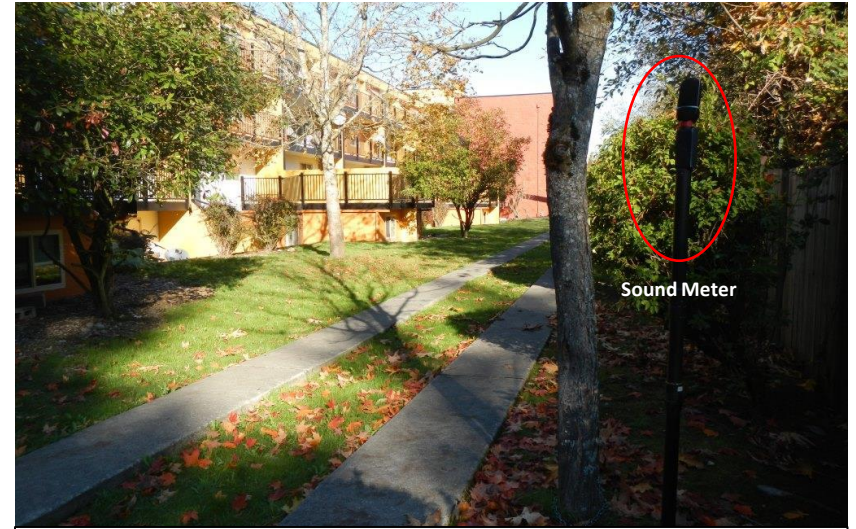


Photo 2: Looking north

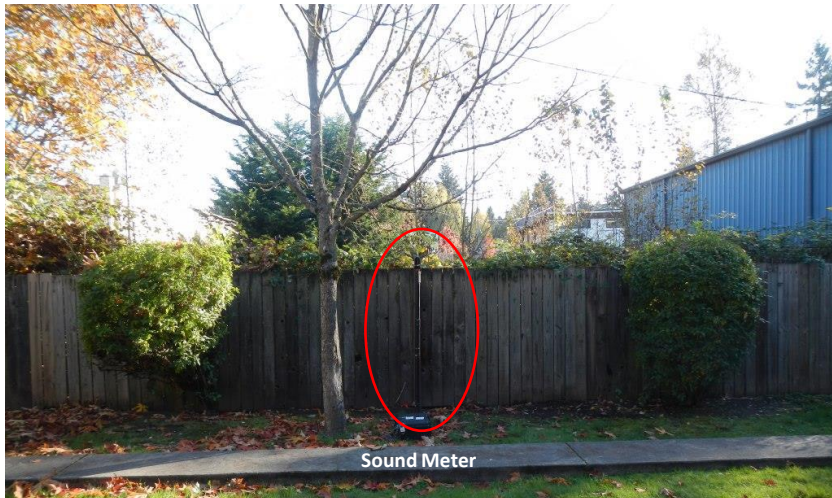


Photo 3: Looking east



Photo 4: Looking west at the Majestic Bay Apartments

Monitoring Location M-33
2459 Pacific Hwy. S. (Majestic Bay Apts.)
Des Moines, Washington



Michael Minor & Associates
Sound.Vibration.Air
Portland, Oregon

Figure 31
Noise Monitoring Locations
Federal Way Extension



Photo 1: Aerial View



Photo 2: Looking southwest



Photo 3: Looking north



Photo 4: Looking southeast

Monitoring Location M-34
2616 S 224th St. (Sea Fox Apts.)
Des Moines, Washington



Michael Minor & Associates
Sound.Vibration.Air
Portland, Oregon

Figure 32
Noise Monitoring Locations
Federal Way Extension



Photo 1: Aerial View



Photo 2: Looking south



Photo 3: Looking toward the corner of Pacific Hwy S and S 224th St.



Photo 4: Looking northeast

Monitoring Location M-35
22323 Pacific Hwy. S. (Citadel Church)
Des Moines, Washington



Michael Minor & Associates
Sound.Vibration.Air
Portland, Oregon

Figure 33
Noise Monitoring Locations
Federal Way Extension

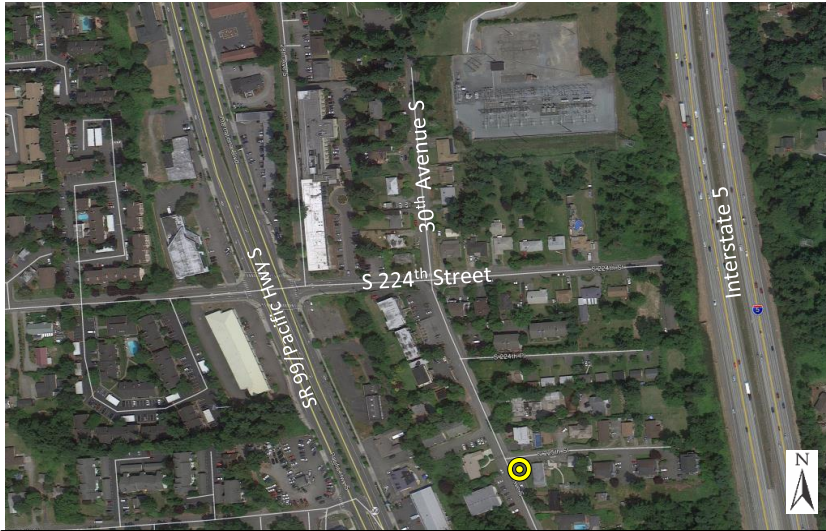


Photo 1: Aerial View



Photo 2: Looking northwest at 30th Avenue S



Photo 3: Looking south at 30th Avenue S



Photo 4: Looking southeast

Monitoring Location M-36
22516 30th Ave. S
Des Moines, Washington



Michael Minor & Associates
Sound.Vibration.Air
Portland, Oregon

Figure 34
Noise Monitoring Locations
Federal Way Extension