

Federal Way Link Extension

Draft Environmental Impact Statement

NOISE AND VIBRATION TECHNICAL REPORT

Appendix G3



This page intentionally left blank.



Federal Way Link Extension

Noise and Vibration Technical Report

Prepared for:
Sound Transit

Prepared by:
HDR Inc.
Michael Minor & Associates, Inc.
ATS Consulting
CH2M HILL

April 2015

This page intentionally left blank.



Photo 1: Aerial View



Photo 2: Looking west at SR 99



Photo 3: Looking north at 18th Avenue S



Photo 4: Looking east

Monitoring Location M-54
29850 18th Ave. S.
Federal Way, Washington



Michael Minor & Associates
Sound.Vibration.Air
Portland, Oregon

Figure 53
Noise Monitoring Locations
Federal Way Extension



Photo 1: Aerial View



Photo 2: Looking west at hotel entrance



Photo 3: Looking east at SR 99



Photo 4: Looking north

Monitoring Location M-55
29815 Pacific Hwy. S. (Federal Way Motel)
Federal Way, Washington



Michael Minor & Associates
Sound.Vibration.Air
Portland, Oregon

Figure 54
Noise Monitoring Locations
Federal Way Extension



Photo 1: Aerial View



Photo 2: Looking north



Photo 3: Looking east toward 16th Ave S.



Photo 4: Looking south

Monitoring Location M-56
1472 S 303rd St.
Federal Way, Washington



Michael Minor & Associates
Sound.Vibration.Air
Portland, Oregon

Figure 55
Noise Monitoring Locations
Federal Way Extension



Photo 1: Aerial View



Photo 2: Looking east toward View at the Lake Apartments

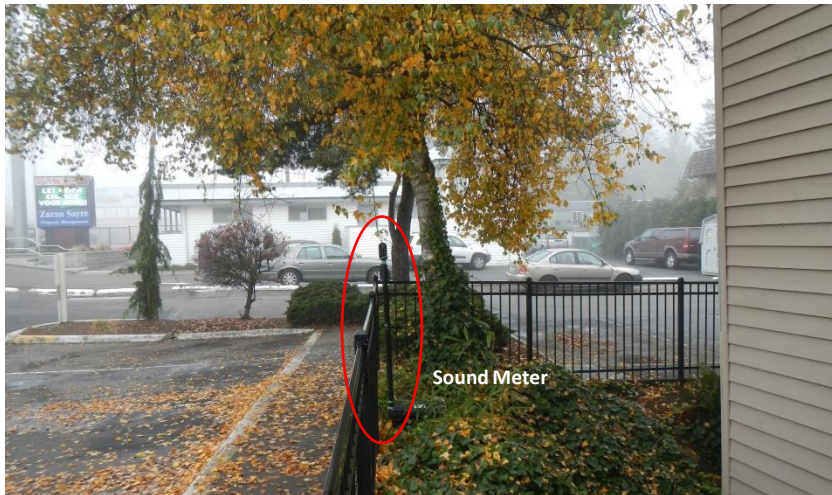


Photo 3: Looking north

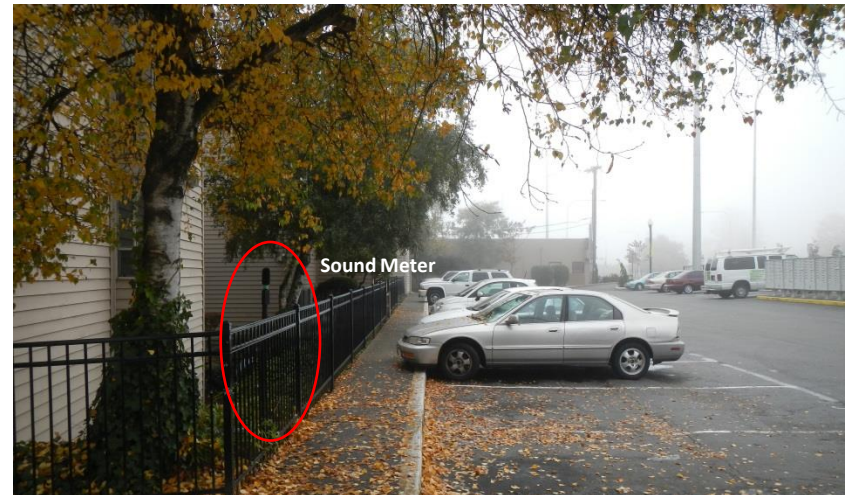


Photo 4: Looking south

Monitoring Location M-57
30602 Pacific Hwy. S. (View at the Lake Apartments)
Federal Way, Washington



Michael Minor & Associates
Sound.Vibration.Air
Portland, Oregon

Figure 56
Noise Monitoring Locations
Federal Way Extension



Photo 1: Aerial View



Photo 2: Looking east at SR99/Pacific Hwy.



Photo 3: Looking northeast at SR99/Pacific Hwy.



Photo 4: Looking south

Monitoring Location M-58
31031 Pacific Hwy. S. (Federal Way High School)
Federal Way, Washington



Michael Minor & Associates
Sound.Vibration.Air
Portland, Oregon

Figure 57
Noise Monitoring Locations
Federal Way Extension



Photo 1: Aerial View



Photo 2: Looking northwest



Photo 3: Looking east toward residence



Photo 4: Looking south toward S 312th St.

Monitoring Location M-59
1816 S 312th St.
Federal Way, Washington



Michael Minor & Associates
Sound.Vibration.Air
Portland, Oregon

Figure 58
Noise Monitoring Locations
Federal Way Extension

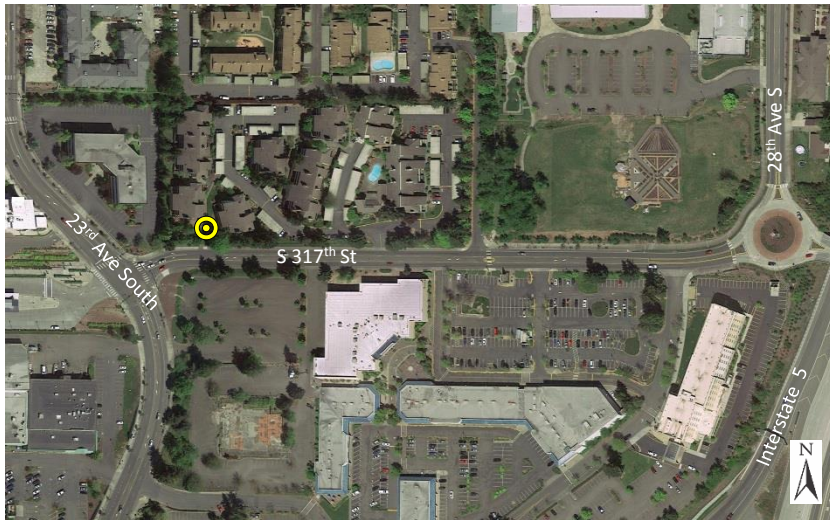


Photo 1: Aerial View



Photo 2: Looking southwest at S 317th St.



Photo 3: Looking northwest



Photo 4: Looking north across S 317th St.

Monitoring Location M-60
2502 S 317th St. (Chelsea Court Condominiums)
Federal Way, Washington



Michael Minor & Associates
Sound.Vibration.Air
Portland, Oregon

Figure 59
Noise Monitoring Locations
Federal Way Extension



Photo 1: Aerial View



Photo 2: Looking east at the Clarion Hotel



Photo 3: Looking south at the Clarion Hotel



Photo 4: Looking north at S 316th St.

Monitoring Location M-61
31611 20th Ave. S. (Clarion Hotel)
Federal Way, Washington



Michael Minor & Associates
Sound.Vibration.Air
Portland, Oregon

Figure 60
Noise Monitoring Locations
Federal Way Extension

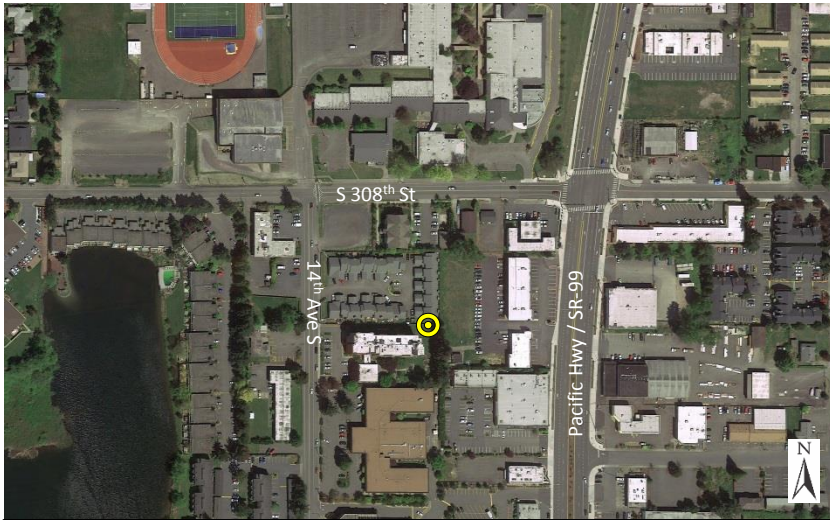


Photo 1: Aerial View



Photo 2: Looking east toward Pacific Hwy / SR-99



Photo 3: Looking southwest



Photo 4: Looking north

Monitoring Location M-62
1444 14th Ave. S. (Bellridge Condominiums)
Federal Way, Washington



Michael Minor & Associates
Sound.Vibration.Air
Portland, Oregon

Figure 61
Noise Monitoring Locations
Federal Way Extension

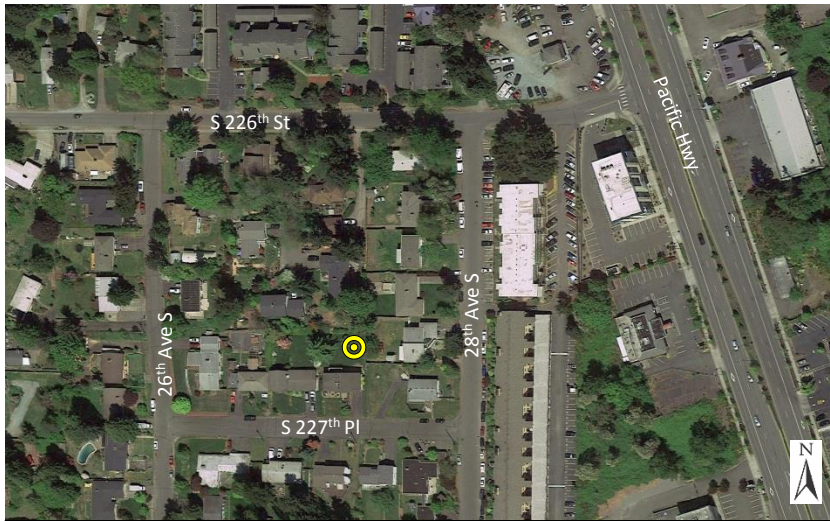


Photo 1: Aerial View

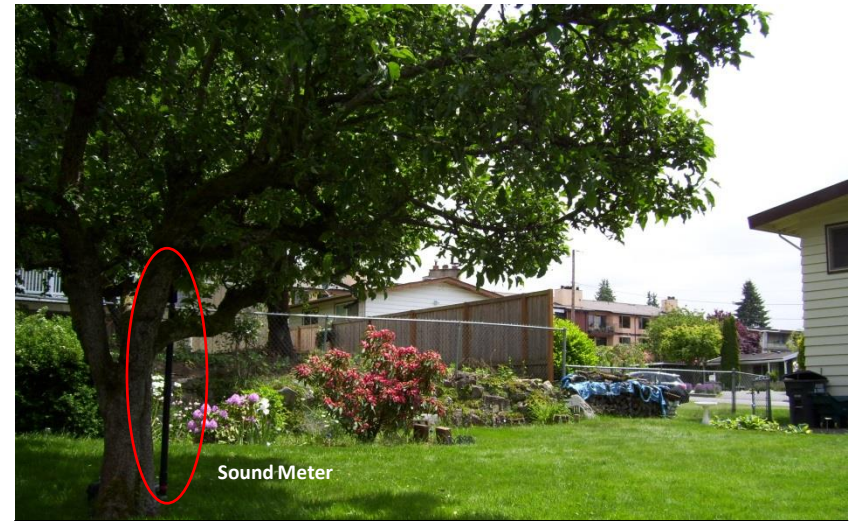


Photo 2: Looking southwest toward 28th Ave S.



Photo 3: Looking northwest

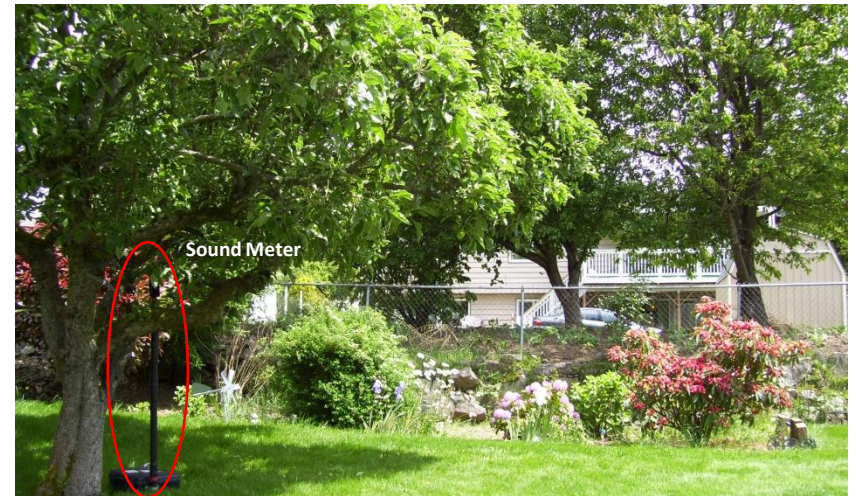


Photo 4: Looking east

Monitoring Location M-63
2670 S. 227th Pl
Des Moines, Washington



Michael Minor & Associates
Sound.Vibration.Air
Portland, Oregon

Figure 62
Noise Monitoring Locations
Federal Way Extension

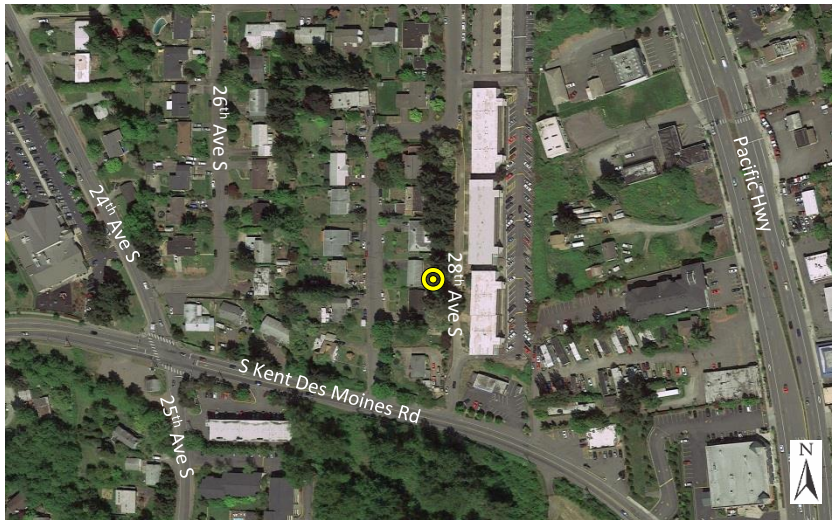


Photo 1: Aerial View



Photo 2: Looking southwest



Photo 3: Looking north



Photo 4: Looking east

Monitoring Location M-64
22902 27th Ave S.
Des Moines, Washington



Michael Minor & Associates
Sound.Vibration.Air
Portland, Oregon

Figure 63
Noise Monitoring Locations
Federal Way Extension

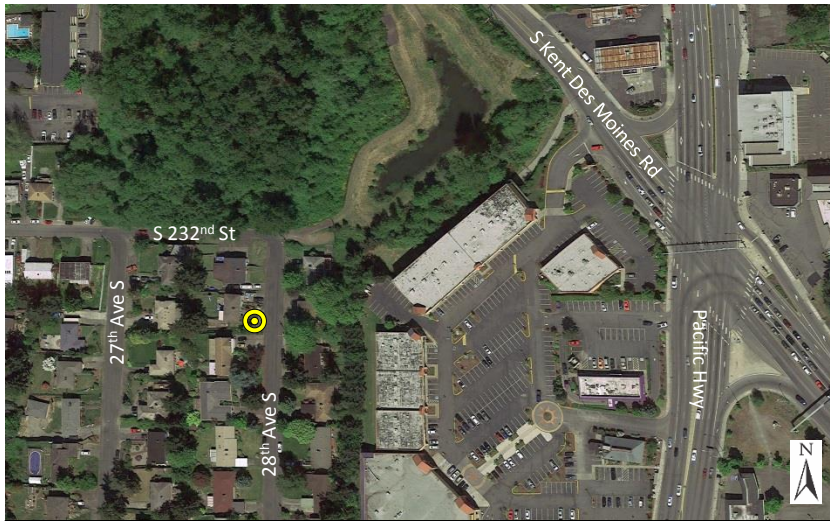


Photo 1: Aerial View



Photo 2: Looking northeast in the direction of S Kent Des Moines Rd



Photo 3: Looking southwest at 23219 28th Ave.



Photo 4: Looking northwest at residence

Monitoring Location M-65
23211 28th Ave.
Des Moines, Washington



Michael Minor & Associates
Sound.Vibration.Air
Portland, Oregon

Figure 64
Noise Monitoring Locations
Federal Way Extension

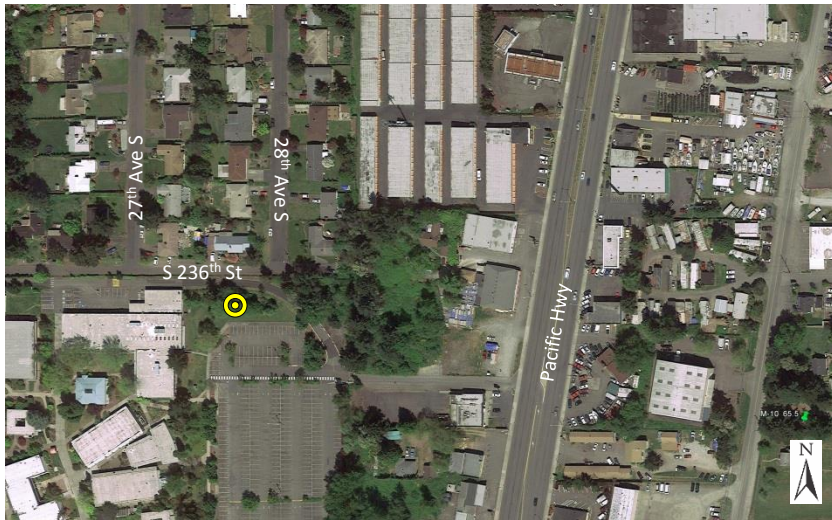


Photo 1: Aerial View



Photo 2: Looking west at Highline Community College

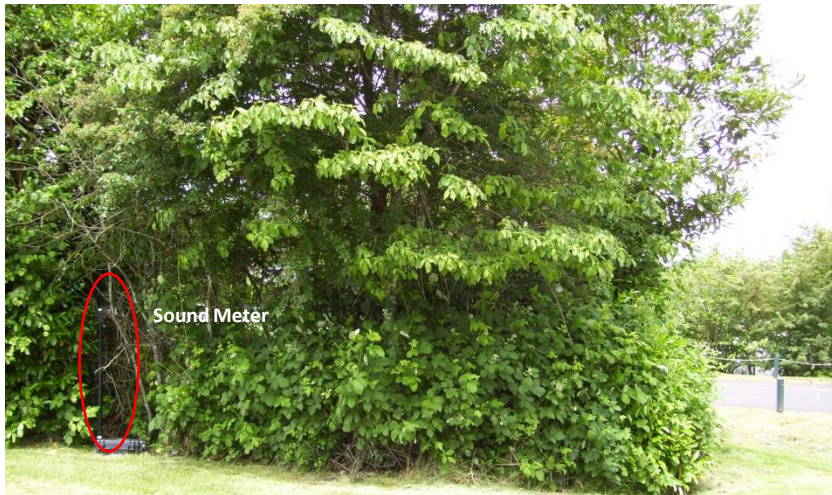


Photo 3: Looking north



Photo 4: Looking south

Monitoring Location M-66 East
Highline Community College (East Parking Lot)
Des Moines, Washington



Michael Minor & Associates
Sound.Vibration.Air
Portland, Oregon

Figure 65
Noise Monitoring Locations
Federal Way Extension



Photo 1: Aerial View



Photo 2: Looking northwest



Photo 3: Looking west



Photo 4: Looking southeast

Monitoring Location M-66 West
Highline Community College (West Parking Lot)
Des Moines, Washington



Michael Minor & Associates
Sound.Vibration.Air
Portland, Oregon

Figure 66
Noise Monitoring Locations
Federal Way Extension



Photo 1: Aerial View



Photo 2: Looking northwest



Photo 3: Looking southwest



Photo 4: Looking southeast

Monitoring Location M-67
29045 15th Pl S.
Federal Way, Washington



Michael Minor & Associates
Sound.Vibration.Air
Portland, Oregon

Figure 67
Noise Monitoring Locations
Federal Way Extension

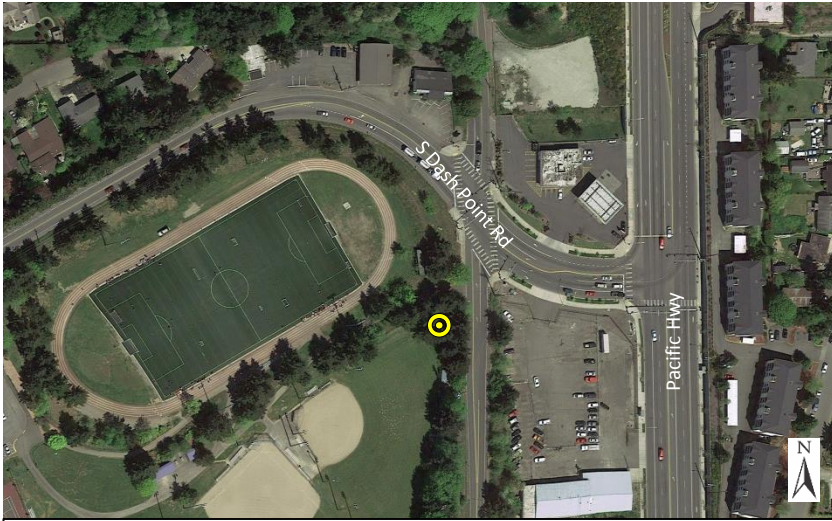


Photo 1: Aerial View



Photo 2: Looking southwest



Photo 3: Looking southeast



Photo 4: Looking northeast

Monitoring Location M-68
1600 SW Dash Point Rd. (Sacajawea Park)
Federal Way, Washington



Michael Minor & Associates
Sound.Vibration.Air
Portland, Oregon

Figure 68
Noise Monitoring Locations
Federal Way Extension

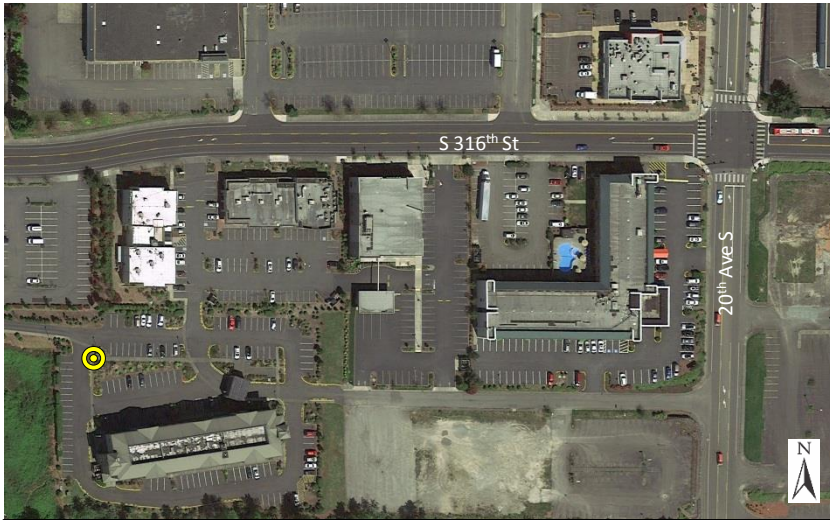


Photo 1: Aerial View



Photo 2: Looking south



Photo 3: Looking west



Photo 4: Looking northeast

Monitoring Location M-69
31622 Pacific Hwy. (Comfort Inn)
Federal Way, Washington



Michael Minor & Associates
Sound.Vibration.Air
Portland, Oregon

Figure 69
Noise Monitoring Locations
Federal Way Extension



Photo 1: Aerial View



Photo 2: Looking southwest



Photo 3: Looking west



Photo 4: Looking east toward I-5

Monitoring Location M-70
2460 S 320th St. (Walkway between Hotels)
Federal Way, Washington



Michael Minor & Associates
Sound.Vibration.Air
Portland, Oregon

Figure 70
Noise Monitoring Locations
Federal Way Extension

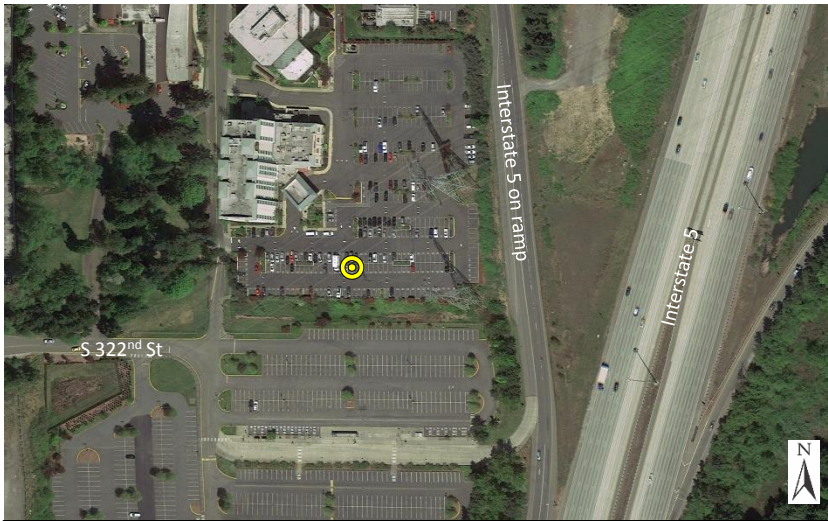


Photo 1: Aerial View



Photo 2: Looking northwest

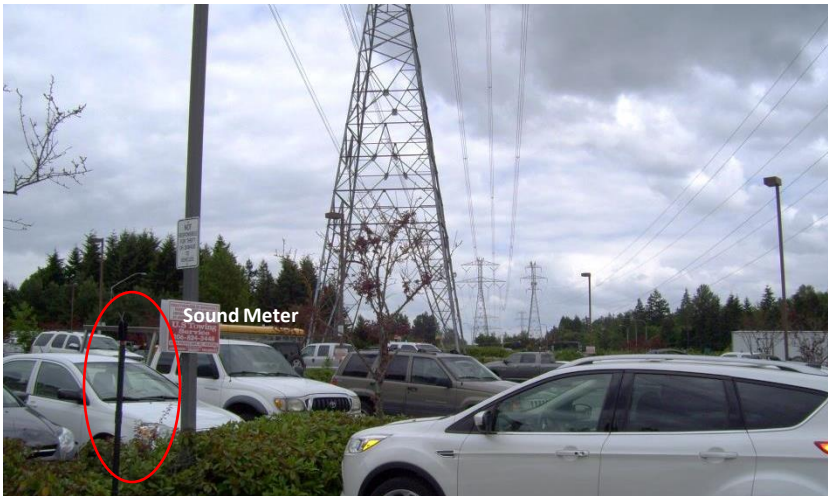


Photo 3: Looking northeast



Photo 4: Looking southeast

Monitoring Location M-71
 32124 25th Ave. (Best Western Plus Evergreen
 Inn & Suites) Federal Way, Washington



Michael Minor & Associates
 Sound.Vibration.Air
 Portland, Oregon

Figure 71
 Noise Monitoring Locations
 Federal Way Extension



Photo 1: Aerial View



Photo 2: Looking northwest



Photo 3: Looking north



Photo 4: Looking southeast toward I-5

Monitoring Location M-72
2101 S 324th St. (Belmor Park)
Federal Way, Washington



Michael Minor & Associates
Sound.Vibration.Air
Portland, Oregon

Figure 72
Noise Monitoring Locations
Federal Way Extension