



APPENDIX C

Water Resource Inventory Areas and Category 4 and 5 Listings

November 2014



This appendix presents supplemental information regarding surface and groundwater resources in the Plan area.

The first section of this appendix summarizes Water Resource Inventory Areas (WRIA), Category 4 and 5 listings, and designated shorelines for surface water bodies within the Plan area. The Washington State Department of Ecology (Ecology) has developed WRIs as part of a system to organize the major watersheds in the state. WRIs comprise watersheds (with their smaller sub-watersheds and sub-basins) that are drained by perennial and intermittent streams, seeps, wetlands, and man-made drainage systems. Category 5 listings of water quality of the water bodies within the Plan area come from Ecology's most recent marine Water Quality Assessment, required by Section 303(d) of the Clean Water Act and approved by the Environmental Protection Agency on December 21, 2012. Within this list, the Category 5 list identifies "waters [streams, lakes, and marine water bodies] for which at least one characteristic or designated use is impaired, as evidenced by failure to attain the applicable water quality standard for one or more pollutants" (Ecology 2012b). Ecology also has identified designated shorelines and shorelines of statewide significance for freshwaters in the Plan area, and the authority to regulate these shorelines has been delegated to Snohomish, King, and Pierce Counties.

The second section of this appendix presents the general locations of designated sole source aquifers in the Plan area. This information is in draft form and should be verified as part of future project development.

Table C-1. Fresh water bodies in the Plan area

Water body	WAC 173-201A designated uses																	Shorelines of the state	303(d) water quality impairments									
	Aquatic life						Recreation			Water supply				Miscellaneous					Bacteria	Bioassessment	Dissolved oxygen	Metals	pH	Phosphorus	Temperature	Toxins	Other	
	Char spawning/rearing	Core summer habitat	Salmonid spawning/rearing	Salmonid rearing/migration only	Redband trout	Warm water species	Excellent primary contact	Primary contact	Secondary contact	Domestic water	Industrial water	Agricultural water	Stock water	Wildlife habitat	Harvesting	Commerce/navigation	Boating											Aesthetics
WRIA 7: Snohomish																												
Snohomish River			✓					✓		✓	✓	✓	✓	✓	✓	✓	✓	✓	✓*	✓	✓	(✓)					✓	
WRIA 8: Cedar-Sammamish																												
Cedar River		✓					✓	✓		✓	✓	✓	✓	✓	✓	✓	✓	✓	✓	✓		✓		✓		✓		
Coal Creek			✓	✓				✓		✓	✓	✓	✓	✓	✓	✓	✓	✓	✓	✓		✓						
Evans Creek			✓	✓				✓		✓	✓	✓	✓	✓	✓	✓	✓	✓		(✓)		(✓)				(✓)		
Green Lake		✓	✓	✓			✓			✓	✓	✓	✓	✓	✓	✓	✓	✓	✓	✓					✓		✓	(✓)
Issaquah Creek		✓						✓		✓	✓	✓	✓	✓	✓	✓	✓	✓	✓	(✓)		✓						
Kelsey Creek			✓	✓				✓		✓	✓	✓	✓	✓	✓	✓	✓	✓		✓		✓				✓		
Lake Sammamish		✓	✓	✓			✓			✓	✓	✓	✓	✓	✓	✓	✓	✓	✓*	✓		✓					✓	
Lake Union		✓	✓	✓			✓			✓	✓	✓	✓	✓	✓	✓	✓	✓	✓	✓	✓		✓		✓		✓	(✓)
Lake Washington		✓	✓	✓			✓			✓	✓	✓	✓	✓	✓	✓	✓	✓	✓*	✓	✓				✓		✓	(✓)
McAleer Creek			✓	✓				✓		✓	✓	✓	✓	✓	✓	✓	✓	✓		✓		✓						
Mercer Slough			✓	✓				✓		✓	✓	✓	✓	✓	✓	✓	✓	✓	✓	✓						✓		
Sammamish River			✓	✓				✓		✓	✓	✓	✓	✓	✓	✓	✓	✓	✓	✓		✓				✓		
Swamp Creek			✓	✓				✓		✓	✓	✓	✓	✓	✓	✓	✓	✓	✓	(✓)		✓		✓		✓		
Thornton Creek			✓	✓				✓		✓	✓	✓	✓	✓	✓	✓	✓	✓		✓		✓				✓		

*Shorelines of Statewide Significance ✓ = Category 5 listing (✓) = Category 4 listing

Table C-1. Fresh water bodies in the Plan area (continued)

Water body	WAC 173-201A designated uses																Shorelines of the state	303(d) water quality impairments													
	Aquatic life						Recreation			Water supply				Miscellaneous					Bacteria	Bioassessment	Dissolved oxygen	Metals	pH	Phosphorus	Temperature	Toxins	Other				
	Char spawning/rearing	Core summer habitat	Salmonid spawning/rearing	Salmonid rearing/migration only	Redband trout	Warm water species	Excellent primary contact	Primary contact	Secondary contact	Domestic water	Industrial water	Agricultural water	Stock water	Wildlife habitat	Harvesting	Commerce/navigation		Boating										Aesthetics			
WRIA 9: Duwamish-Green																															
Black River			✓	✓				✓		✓	✓	✓	✓	✓	✓	✓	✓	✓	✓	✓		✓		✓							
Duwamish River			✓					✓		✓	✓	✓	✓	✓	✓	✓	✓	✓		✓	✓	✓	✓	✓			✓	✓			
Green River		✓	✓				✓	✓		✓	✓	✓	✓	✓	✓	✓	✓	✓	✓*	✓		✓		✓				(✓)	(✓)	(✓)	
Mill Creek			✓	✓				✓		✓	✓	✓	✓	✓	✓	✓	✓	✓		✓		✓	✓				✓				
Miller Creek			✓	✓				✓		✓	✓	✓	✓	✓	✓	✓	✓	✓		✓		✓									
Springbrook Springs			✓	✓				✓		✓	✓	✓	✓	✓	✓	✓	✓	✓		✓		✓									
WRIA 10: Puyallup-White																															
Hylebos Creek			✓	✓				✓		✓	✓	✓	✓	✓	✓	✓	✓	✓		✓	✓		✓								
Lake Tapps		✓	✓	✓			✓			✓	✓	✓	✓	✓	✓	✓	✓	✓	✓*											(✓)	
Puyallup River		✓		✓				✓	✓	✓	✓	✓	✓	✓	✓	✓	✓	✓	✓*	✓		✓		✓						(✓)	
Salmon Creek			✓	✓				✓		✓	✓	✓	✓	✓	✓	✓	✓	✓		(✓)											
Wapato Creek			✓	✓				✓		✓	✓	✓	✓	✓	✓	✓	✓	✓		✓	✓	✓								(✓)	
White River	✓	✓	✓				✓	✓		✓	✓	✓	✓	✓	✓	✓	✓	✓	✓*	(✓)				✓			✓			(✓)	
WRIA 11: Nisqually																															
Nisqually River		✓						✓		✓	✓	✓	✓	✓	✓	✓	✓	✓	✓*											(✓)	

*Shorelines of Statewide Significance ✓ = Category 5 listing (✓) = Category 4 listing

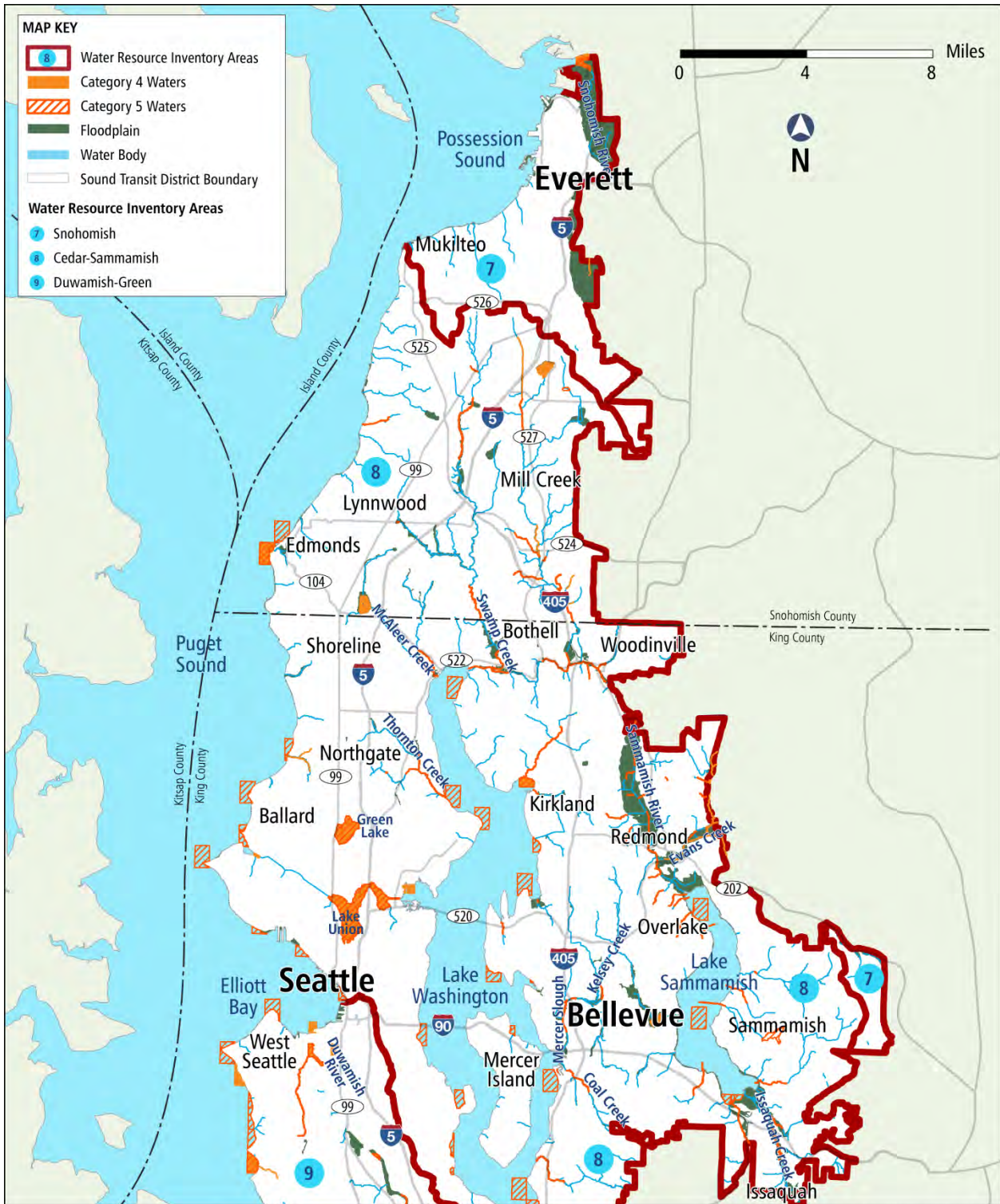
Table C-1. Fresh water bodies in the Plan area (continued)

Water body	WAC 173-201A designated uses																	Shorelines of the state	303(d) water quality impairments									
	Aquatic life						Recreation			Water supply				Miscellaneous					Bacteria	Bioassessment	Dissolved oxygen	Metals	pH	Phosphorus	Temperature	Toxins	Other	
	Char spawning/rearing	Core summer habitat	Salmonid spawning/rearing	Salmonid rearing/migration only	Redband trout	Warm water species	Excellent primary contact	Primary contact	Secondary contact	Domestic water	Industrial water	Agricultural water	Stock water	Wildlife habitat	Harvesting	Commerce/navigation	Boating											Aesthetics
WRIA 12: Chambers-Clover																												
Chambers Creek			✓	✓				✓		✓	✓	✓	✓	✓	✓	✓	✓	✓		✓	✓		(✓)					
Clover Creek			✓					✓		✓	✓	✓	✓	✓	✓	✓	✓	✓	✓	✓		✓				✓		
Murray Creek			✓	✓				✓		✓	✓	✓	✓	✓	✓	✓	✓	✓										
Spanaway Lake		✓	✓	✓			✓			✓	✓	✓	✓	✓	✓	✓	✓	✓	✓	✓								

Table C-2. Marine water bodies in the Plan area

Water body	WAC 173-201A designated uses												303(d) water quality impairments									
	Aquatic life				Recreational				Miscellaneous													
	Extraordinary	Excellent	Good	Fair	Shellfish harvest	Primary contact	Secondary contact	Wildlife habitat	Harvesting	Commerce/ navigation	Boating	Aesthetics	Bacteria	Bioassessment	Dissolved oxygen	Metals	pH	Phosphorus	Temperature	Toxins	Other	
Commencement Bay		✓	✓	✓	✓	✓	✓	✓	✓	✓	✓	✓	✓	✓	✓	(✓)				✓		
Elliott Bay		✓			✓	✓		✓	✓	✓	✓	✓	✓	✓		(✓)				✓		
Possession Sound	✓	✓	✓		✓	✓	✓	✓	✓	✓	✓	✓	✓	✓	✓					✓		
Puget Sound	✓				✓	✓		✓	✓	✓	✓	✓	✓	✓						✓	(✓)	

*Shorelines of Statewide Significance ✓ = Category 5 listing (✓) = Category 4 listing



Source: Sound Transit 2013, Ecology, FEMA

Figure C-1. Water Resource Inventory Areas and resources in the Plan area—north



Figure C-2. Water Resource Inventory Areas and resources in the Plan area—south

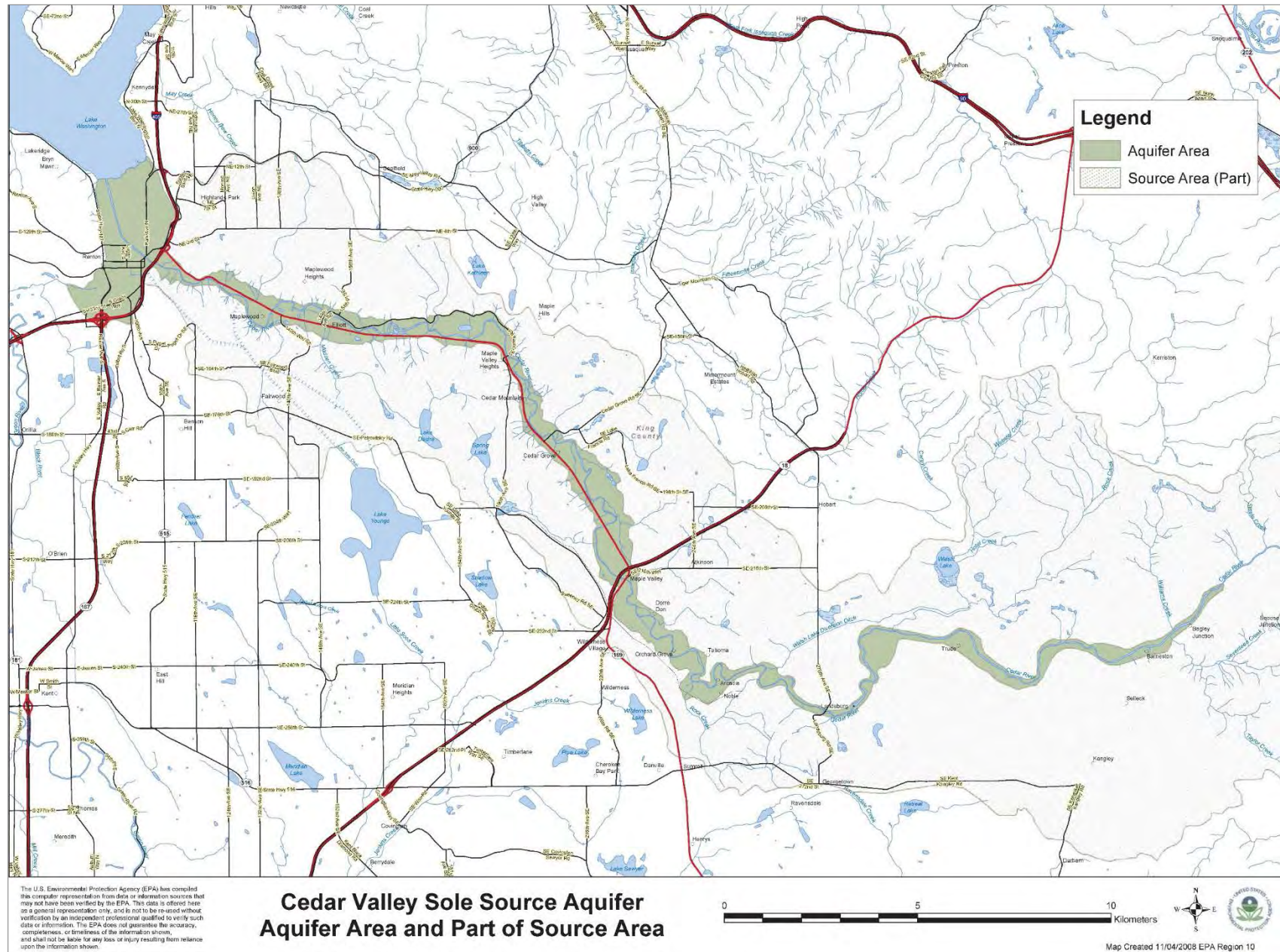


Figure C-3. Cedar Valley sole source aquifer

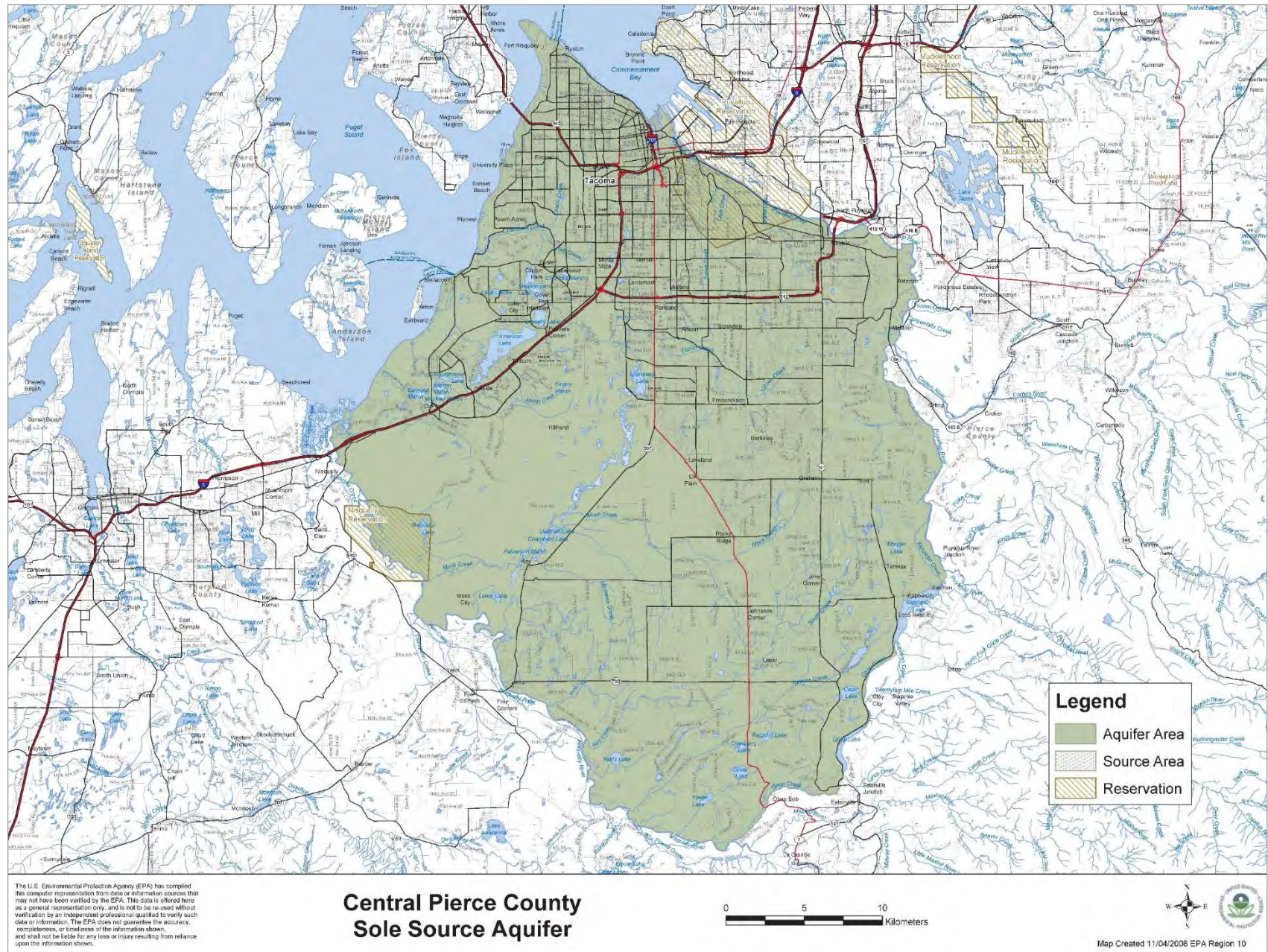


Figure C-4. Central Pierce County sole source aquifer

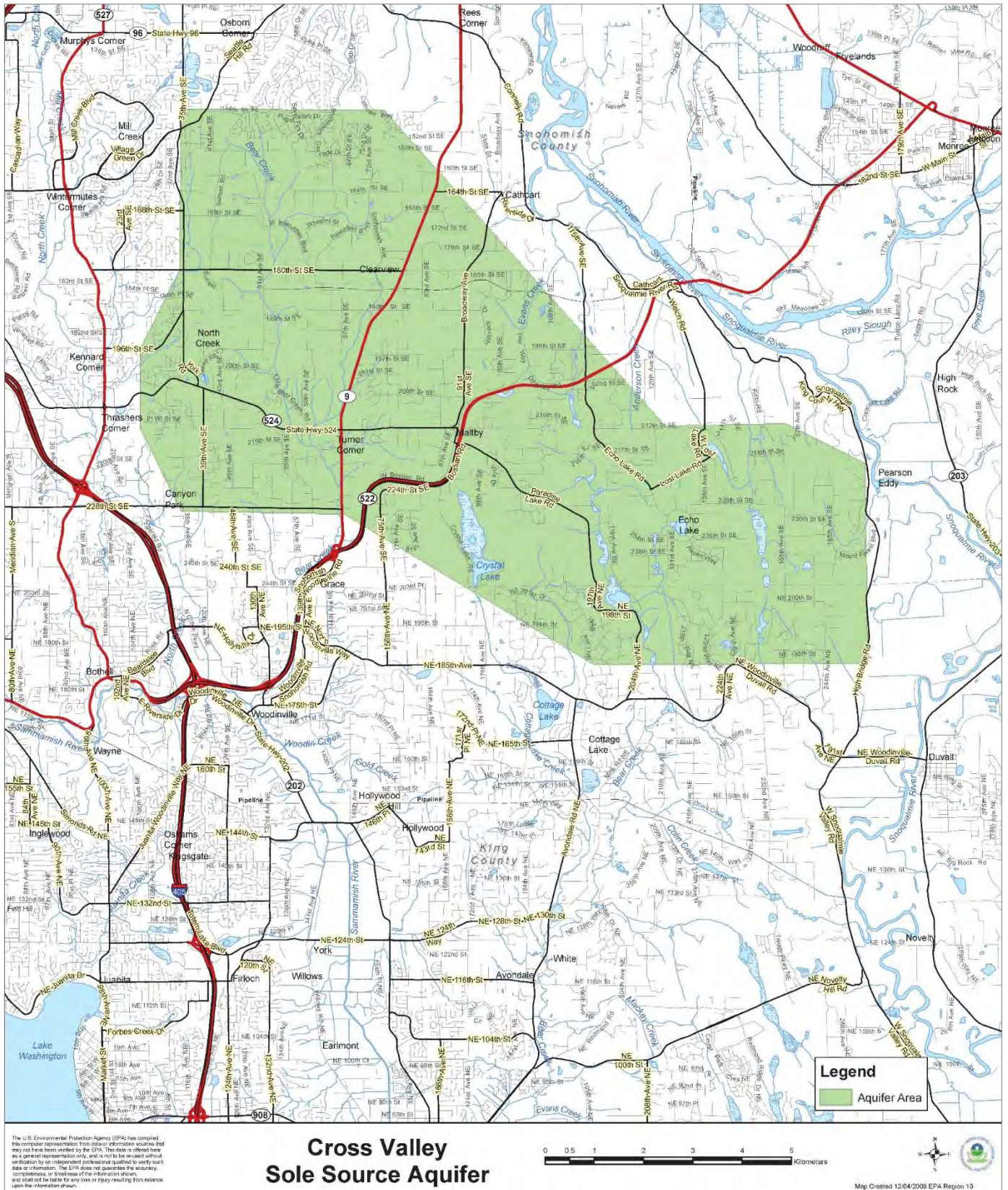


Figure C-5. Cross Valley sole source aquifer

