



Lynnwood Link Extension

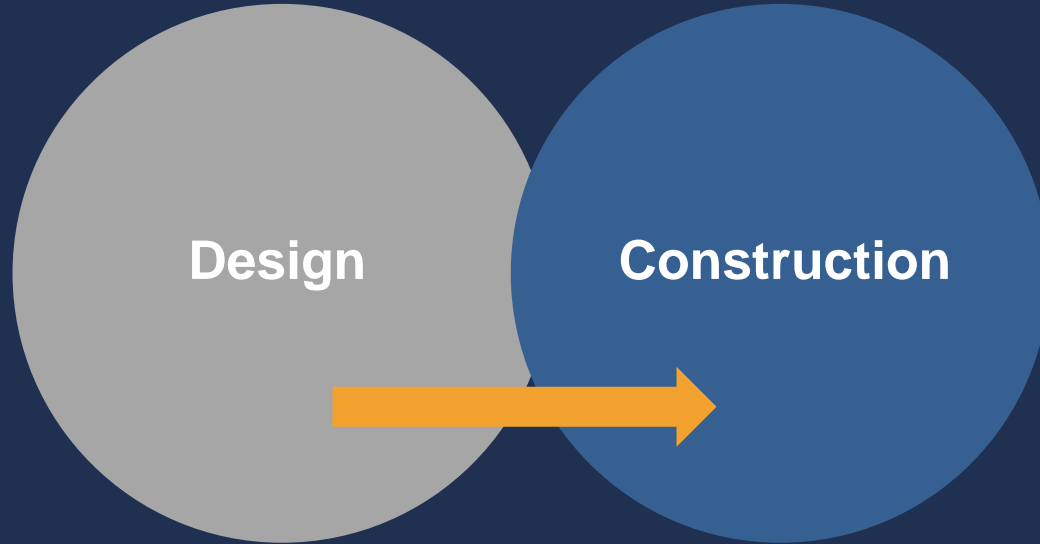
Seattle/Shoreline Open House

Presentation overview

- Introductions
- Project status
- Construction preview
- Open house guide



Project status



- Permitting
- Federal funding
- Thank you to our partners (Seattle, Shoreline, WSDOT, King County Metro, Community Transit)

[illegible]

Shoreline South/145th



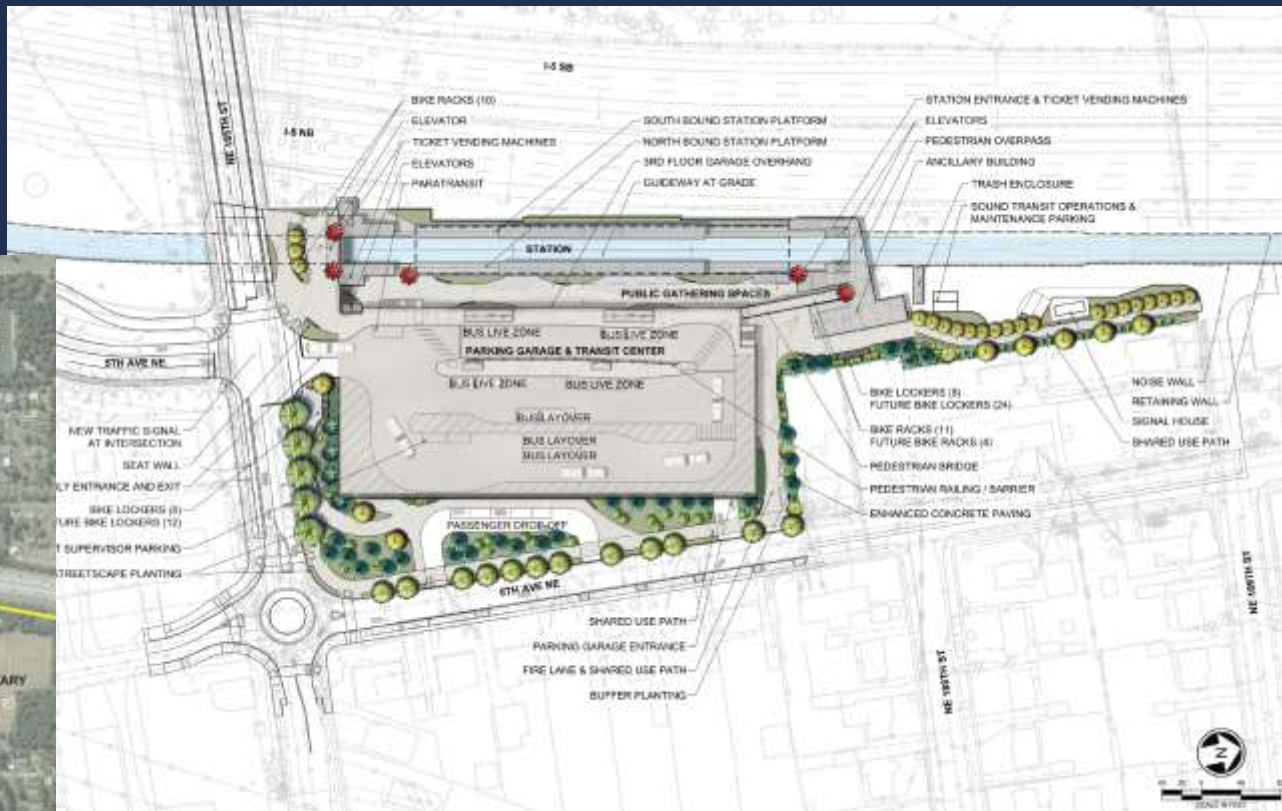
Aerial View

Shoreline South/145th



Platform View

Shoreline North/185th



Vicinity Map and Site Plan

Shoreline North/185th



South Entry View

Shoreline North/185th



Platform View

Construction preview

Work starting soon!

- Early 2019
 - Structure demolition
 - Utility relocations
 - Clearing and grading
- Mid-2019:
 - Light rail construction begins



Construction preview



Typical *at-grade* light rail construction sequence

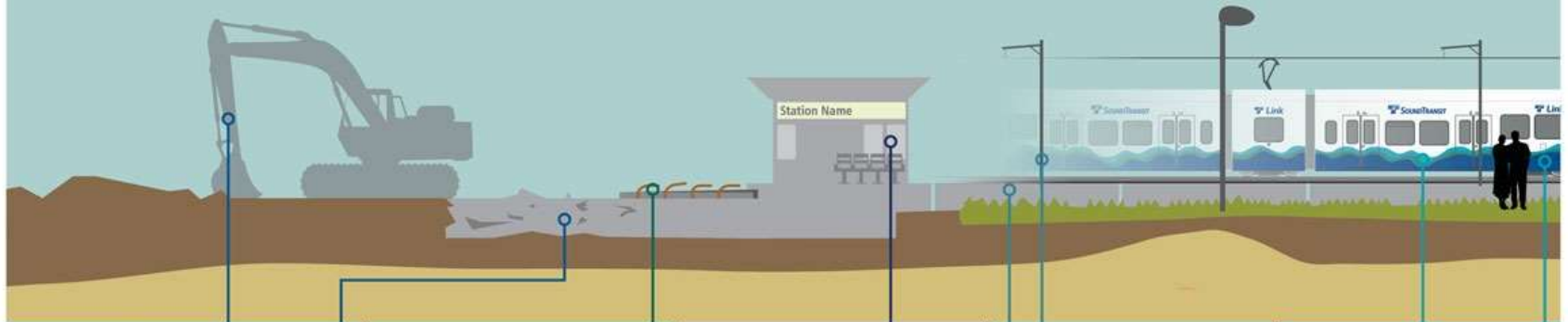
Lynnwood Link's light rail construction includes building at-grade and elevated light rail infrastructure

2019

Construction started

2024

Open for service



Prepare the work zone

Build at-grade track

Build stations, garages and
supporting infrastructure

Install rail and power

Install and test systems

Construction preview



Typical **elevated** light rail construction sequence

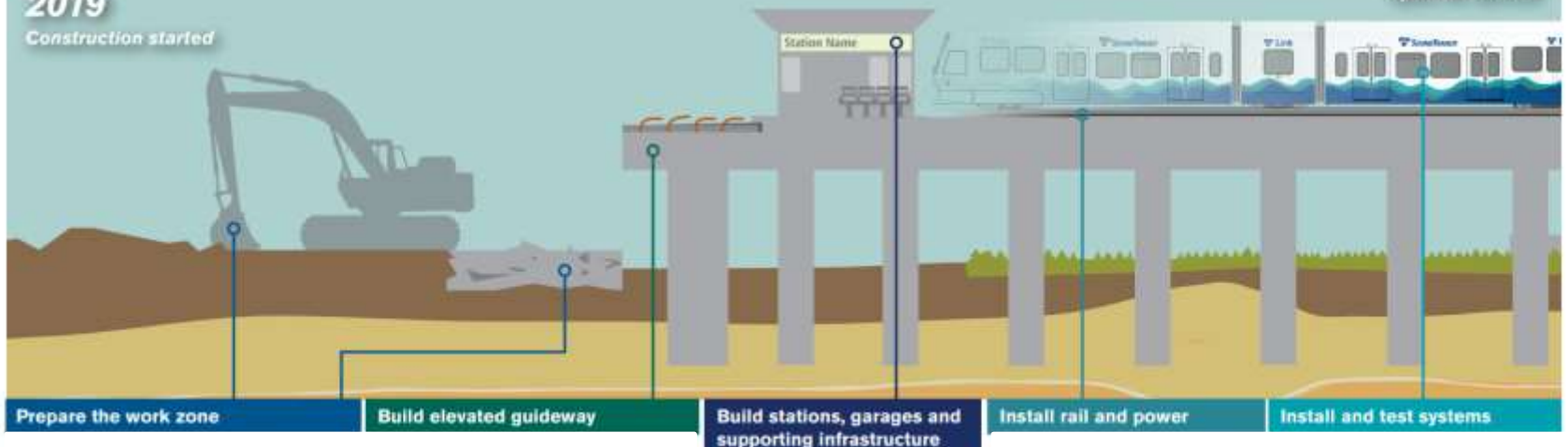
Lynnwood Link's light rail construction includes building at-grade and elevated light rail infrastructure

2019

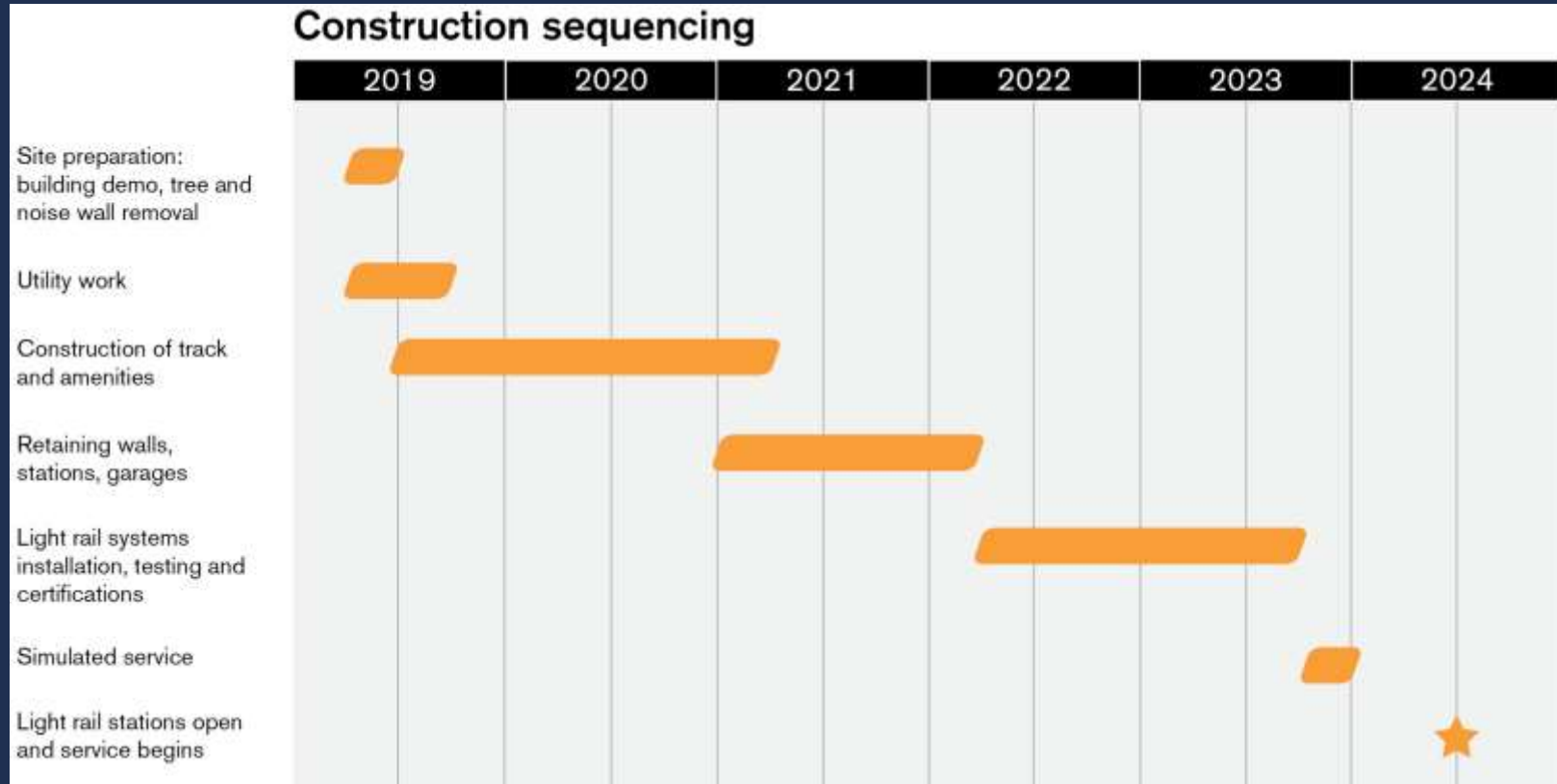
Construction started

2024

Open for service



Construction schedule



Construction schedules are fluid and subject to change.

Tree removal and replacement

Trees and vegetation removed for construction access and staging

- Begins early 2019
- Keeping as many trees as possible

Replanting more than twice as many as removed

- Coordinating with cities and other partners

Proposed plantings

City	Trees removed*	Trees replanted*
Seattle	579	6,156
Shoreline	1,419	5,893
Mountlake Terrace	2,318	7,504
Lynnwood	1,074	1,192
Total:	5,390	20,745

** Estimated as of February 2019. Approximately 75 percent of the trees to be removed are in the WSDOT right-of-way bordering I-5, where 77 percent of the replacement trees will be planted.*

Noise wall demolition

- Existing WSDOT noise walls will be removed in select locations
- Temporary noise barriers will be installed prior to existing noise wall removal as much as possible
- New noise walls will be constructed prior to light rail operations



Parking changes

During construction

- North Jackson P&R closes this spring (~March 27)
 - Parking available at two nearby lots
 - 1:1 replacement

Future parking

- 500 new spaces at each Shoreline station



Long-term road closure

5th Ave NE will be closed

- Starting as early as spring 2019
- Closed between NE 130th and NE 145th streets
- Space required to build columns for elevated structure
- Pedestrian path to remain open
- Local access to be maintained



Additional early closures

- Ronald Bog Park
 - New trails, signage and wetland enhancements
- NE 116th St. bike/ped path
 - Detour route and duration TBD
 - Enhanced bike/ped connection following construction
- I-5 ramps and lanes
 - Periodic closures
- SR104
 - Ramp revisions

Typical work hours:

Monday – Saturday

7 am - 5 pm

(periodic night and Sunday work
will be necessary)

Our commitment to you

Good neighbor commitments:

- Provide advanced notification
- Provide outreach staff on-site
- Maintain a safe and secure construction site
- Maintain a clean work site and protect the environment
- Minimize noise, dust and debris
- Keep traffic moving
- Provide a 24-hour Construction Hotline

**Sign up for station-area
email updates!
soundtransit.org/subscribe**

**Community Outreach Specialist
My Nguyen (Seattle & Shoreline)**

- 206-370-5690
- My.Nguyen@SoundTransit.org

Open House guide



What you'll find:

- *Additional detail about upcoming and future construction work*
- *Meet the construction team*
- *Partner tables*

Online Open House:

LynnwoodLink.Participate.Online

Subscribe to construction alerts
at soundtransit.org/subscribe



Thanks!
soundtransit.org/LLE

