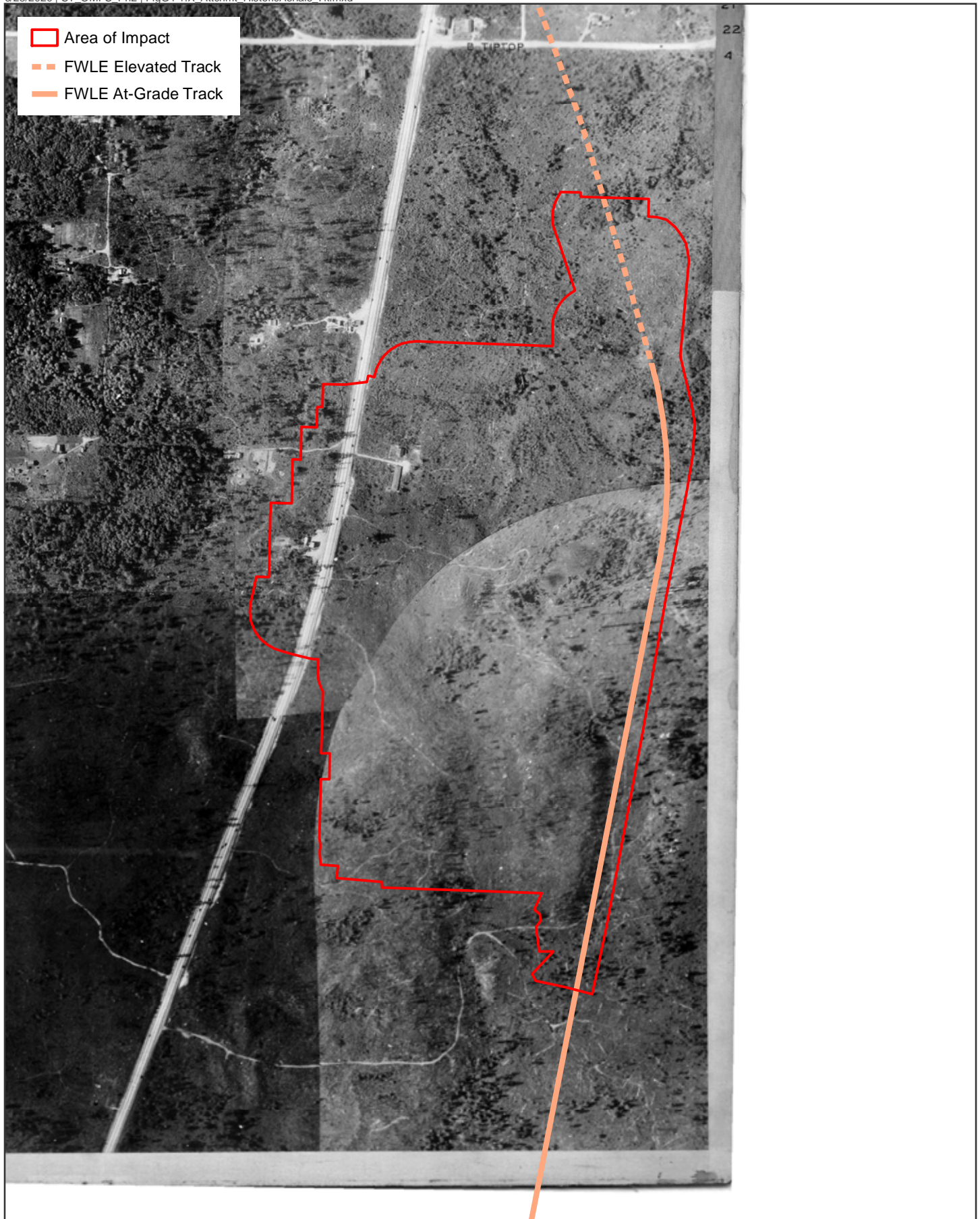




ATTACHMENT G4-1

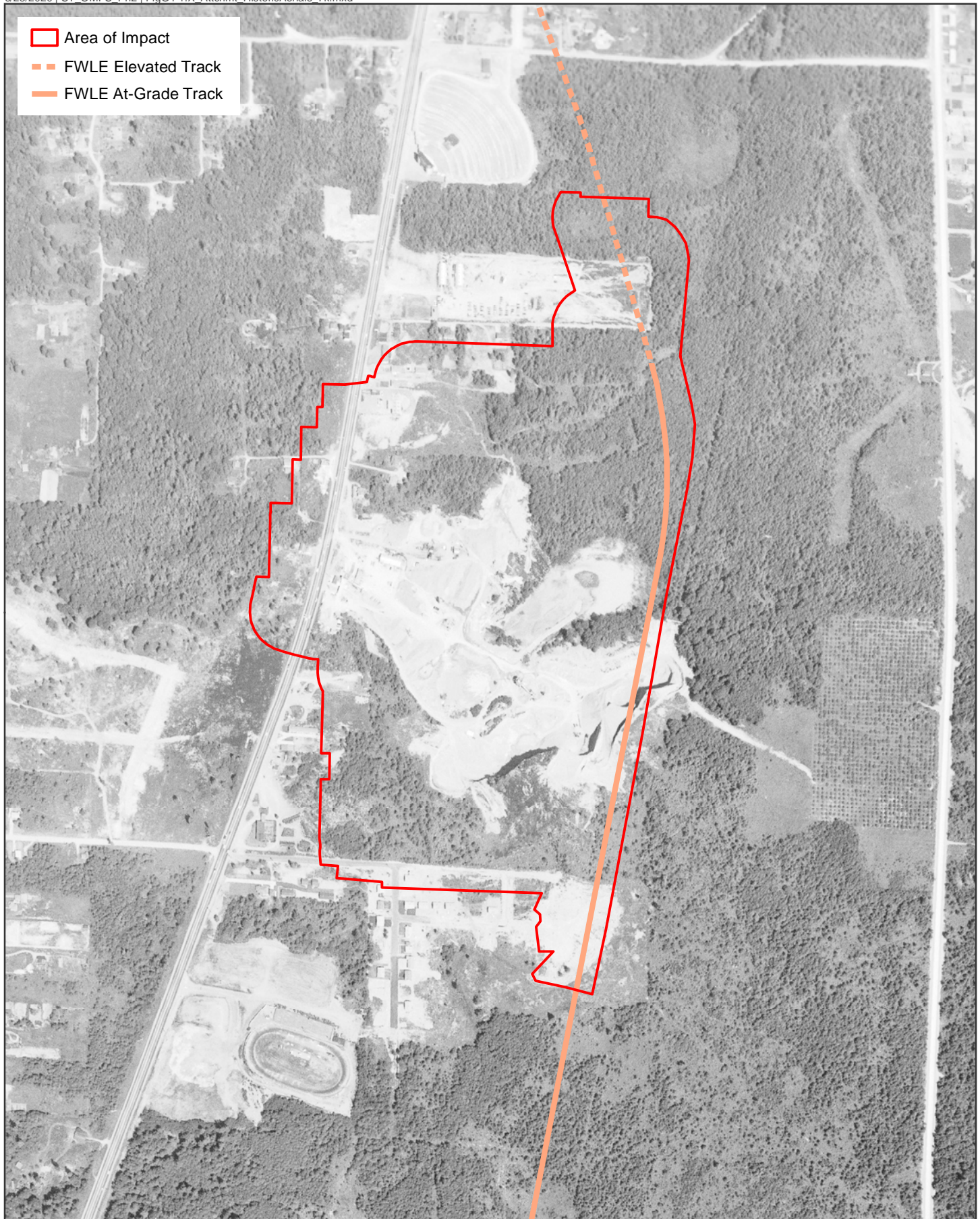
Historic Aerials



Data Sources: King County; Cities of Des Moines, Federal Way, Kent (2019).

FIGURE G4-1.1
1937 Historic Aerial
Midway Landfill Alternative

OMF South



Data Sources: King County; Cities of Des Moines, Federal Way, Kent (2019).

FIGURE G4-1.2
1957 Historic Aerial
Midway Landfill Alternative

OMF South



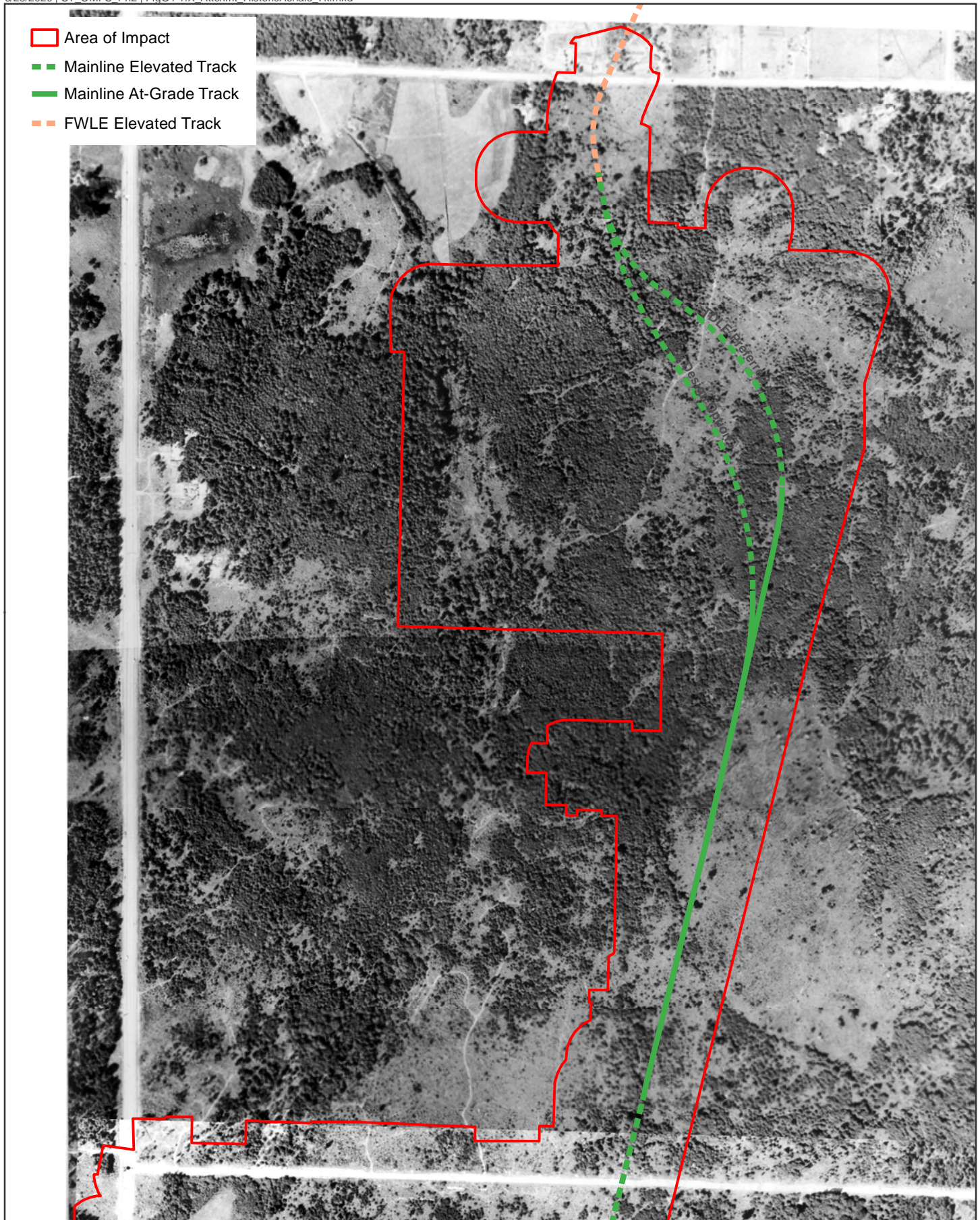
0 500 1,000 Feet



Data Sources: King County; Cities of Des Moines, Federal Way, Kent (2019).

FIGURE G4-1.3
1965 Historic Aerial
Midway Landfill Alternative

OMF South



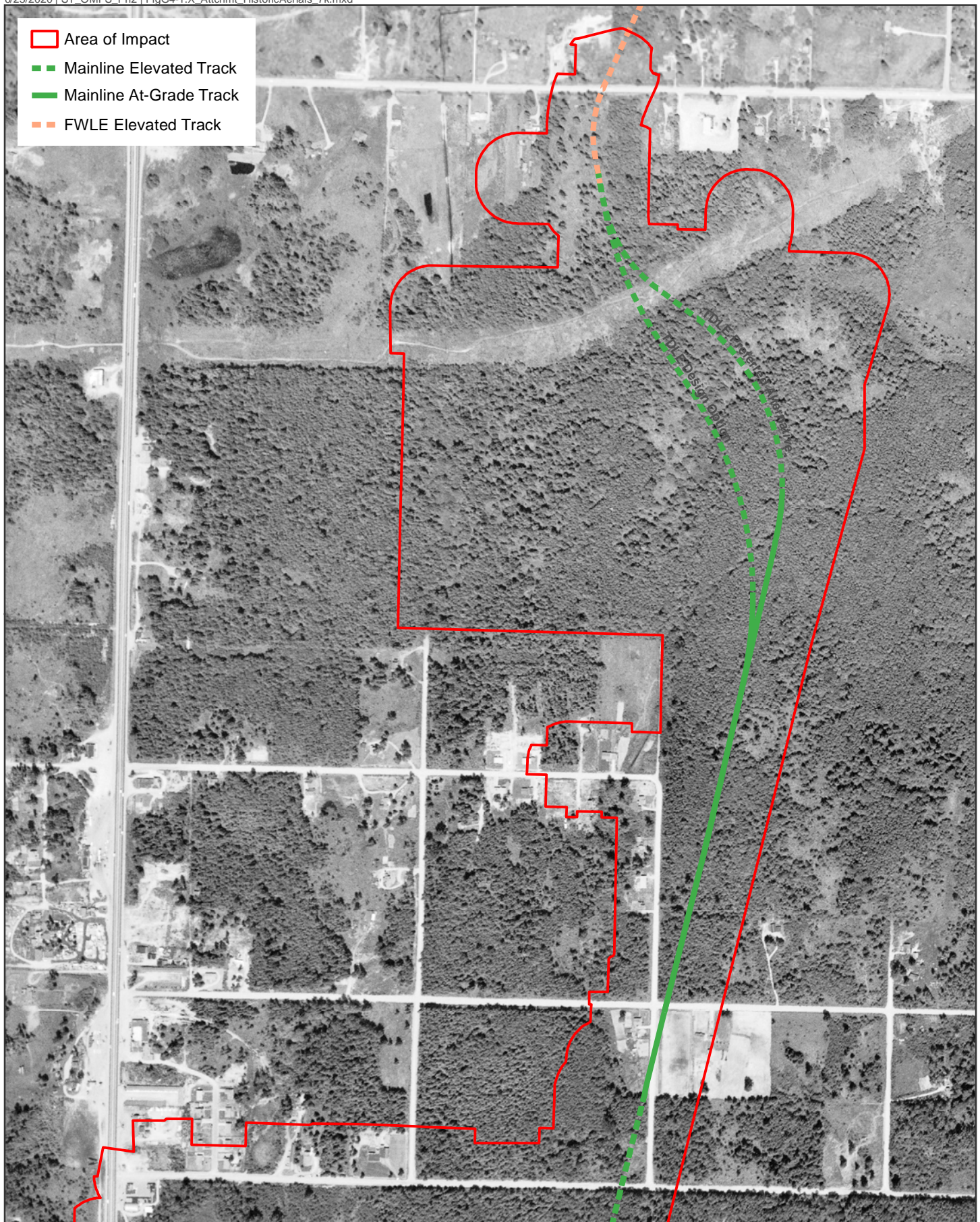
Data Sources: King County; Cities of Des Moines, Federal Way, Kent (2019).

FIGURE G4-1.4
1935 Historic Aerial
Mainline Track Options

OMF South



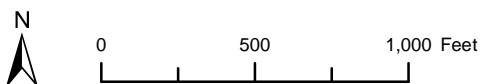
0 500 1,000 Feet

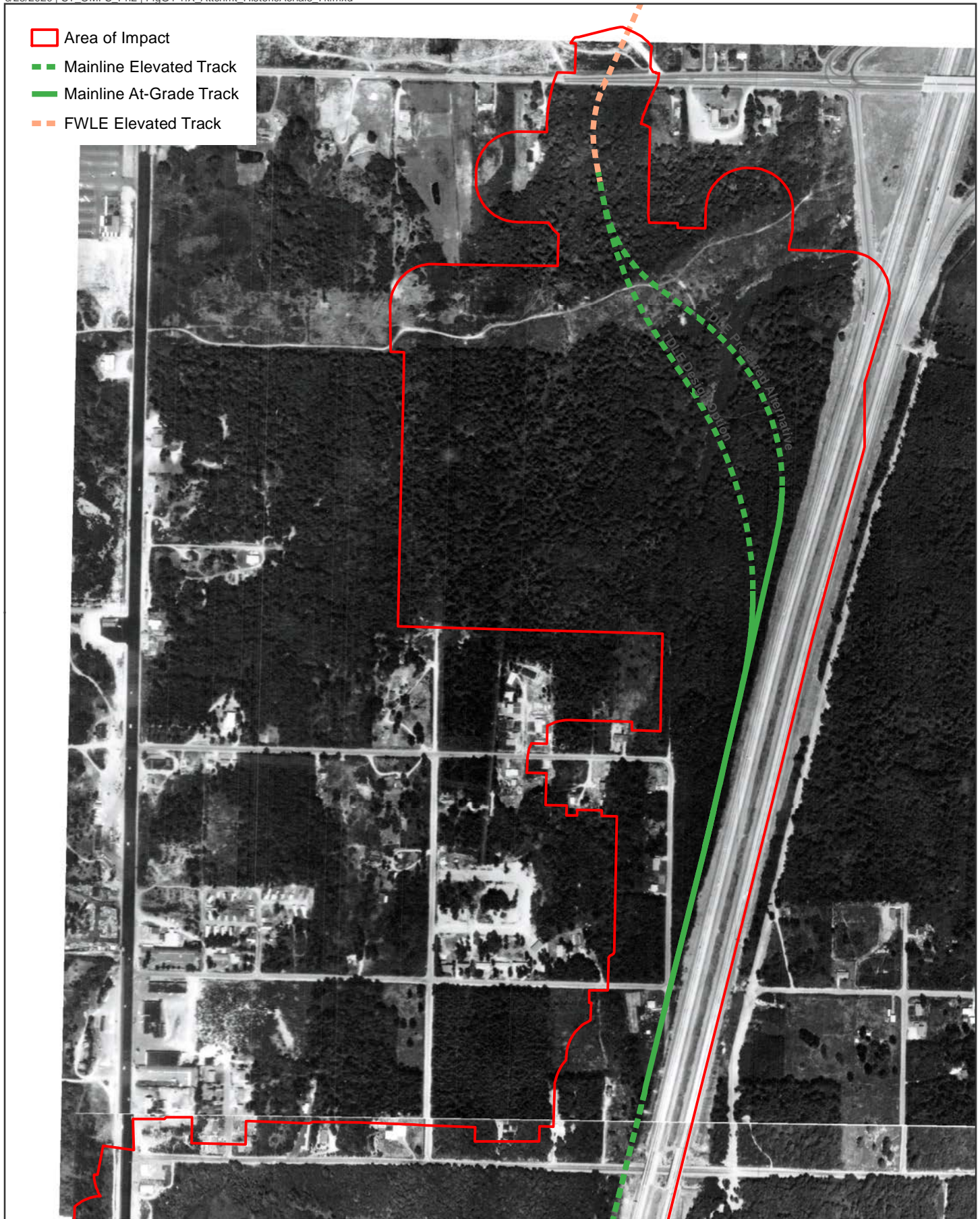


Data Sources: King County; Cities of Des Moines, Federal Way, Kent (2019).

FIGURE G4-1.5
1957 Historic Aerial
Mainline Track Options

OMF South





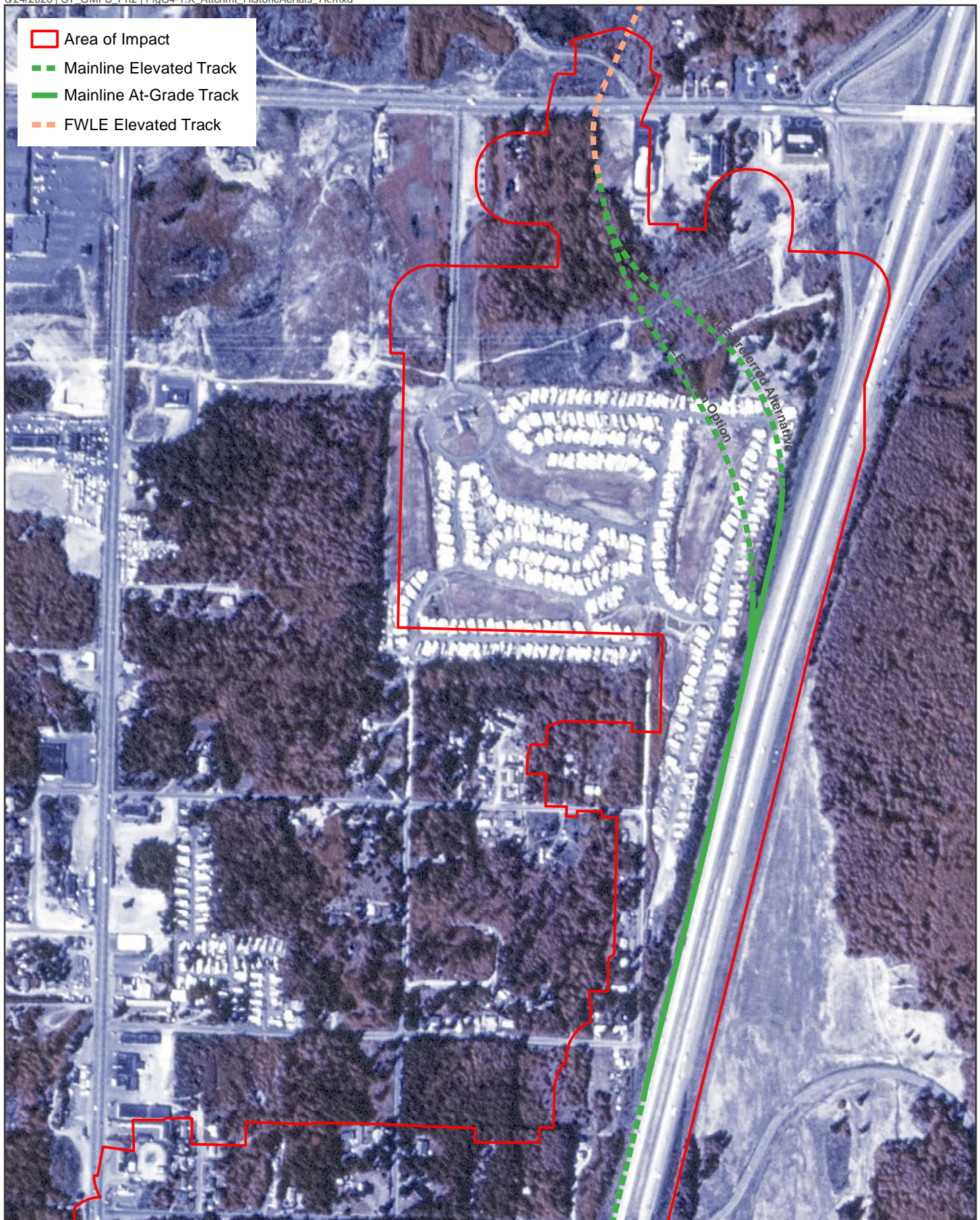
Data Sources: King County; Cities of Des Moines, Federal Way, Kent (2019).

FIGURE G4-1.6
1965 Historic Aerial
Mainline Track Options

OMF South



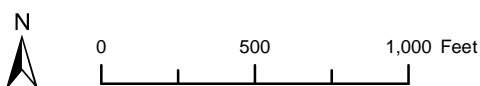
0 500 1,000 Feet

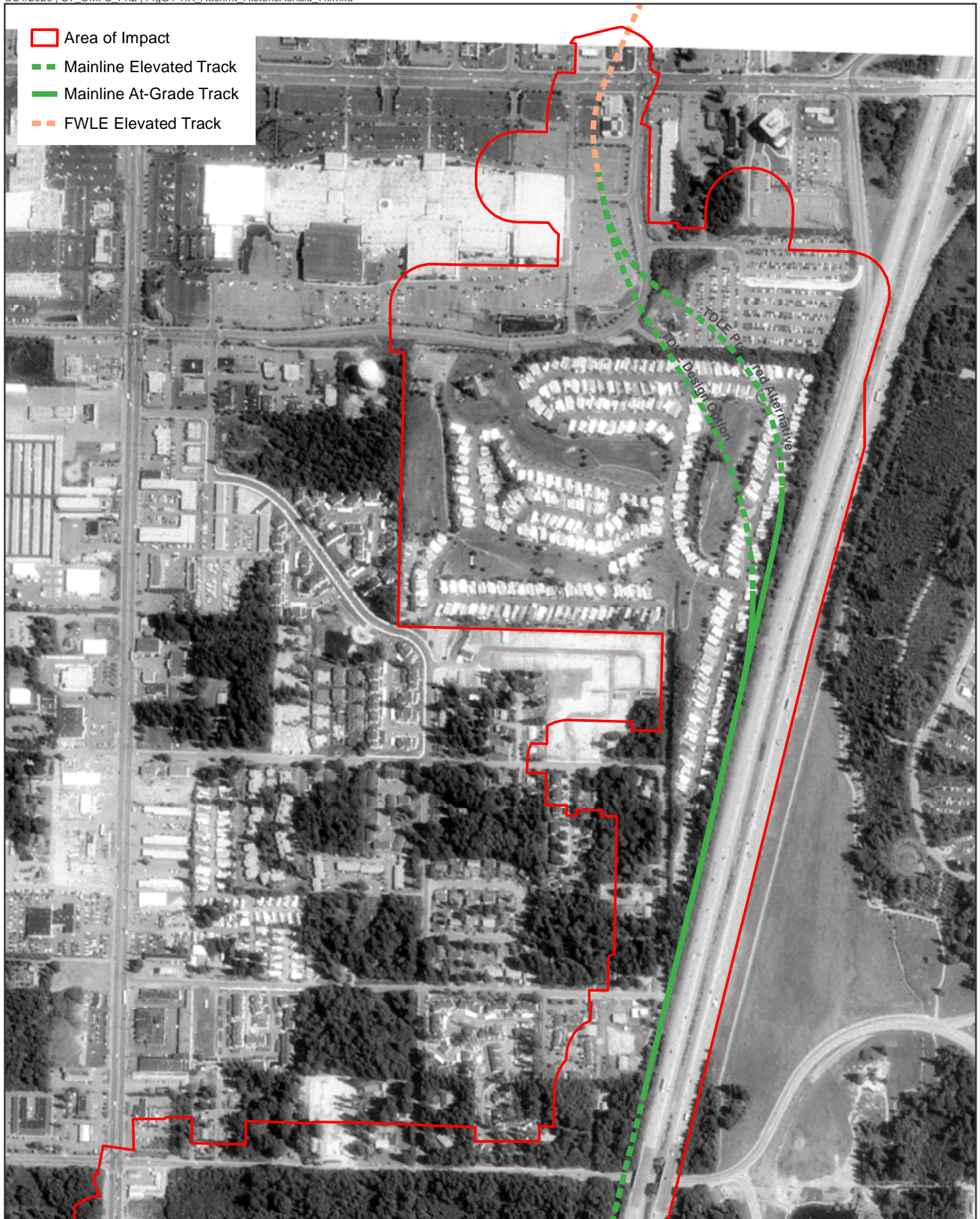


Data Sources: King County; Cities of Des Moines, Federal Way, Kent (2019).

FIGURE G4-1.7
1972 Historic Aerial
Mainline Track Options

OMF South

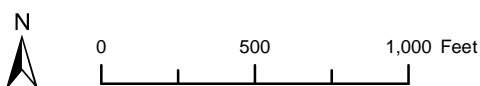


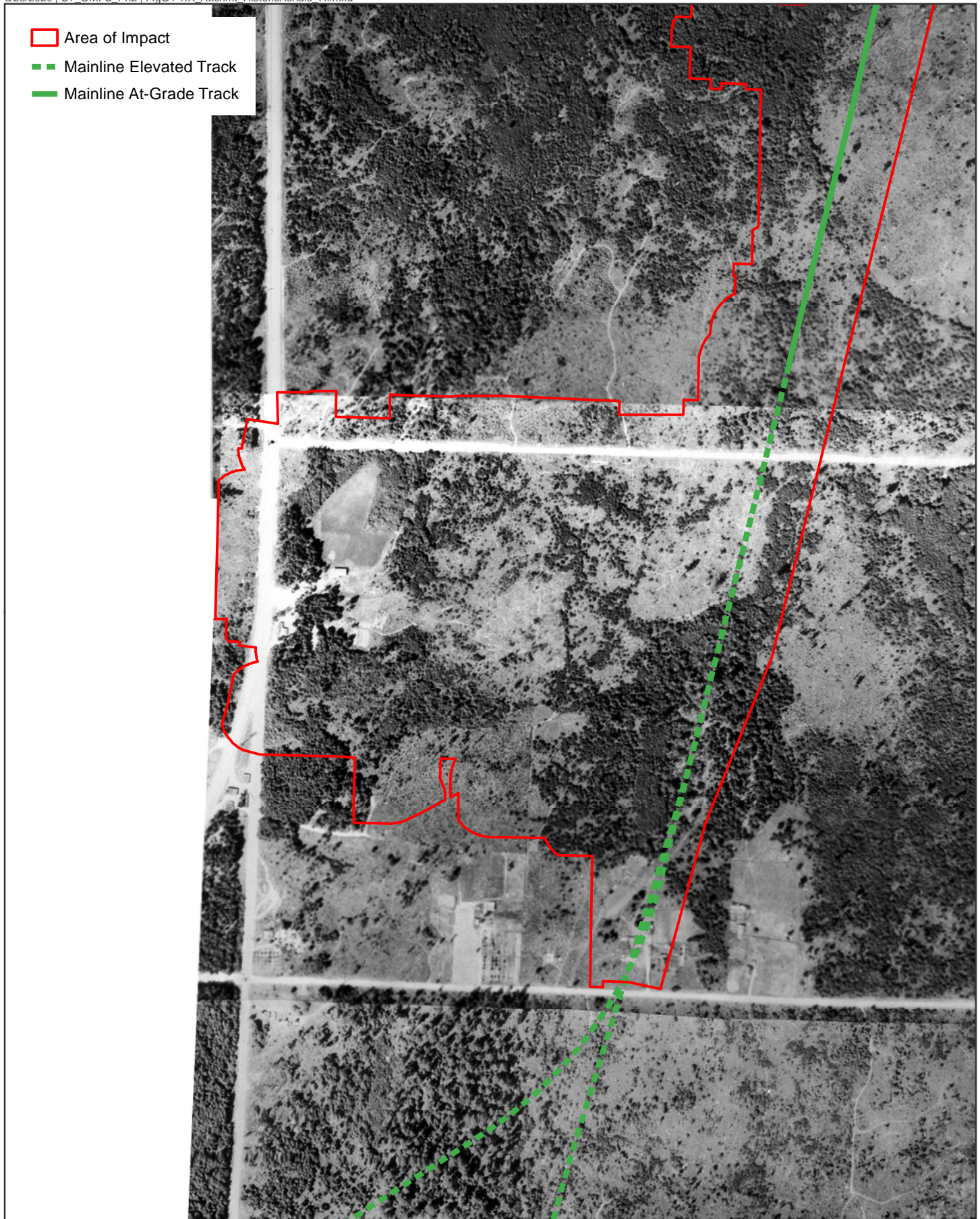


Data Sources: King County; Cities of Des Moines, Federal Way, Kent (2019).

FIGURE G4-1.8
1991 Historic Aerial
Mainline Track Options

OMF South





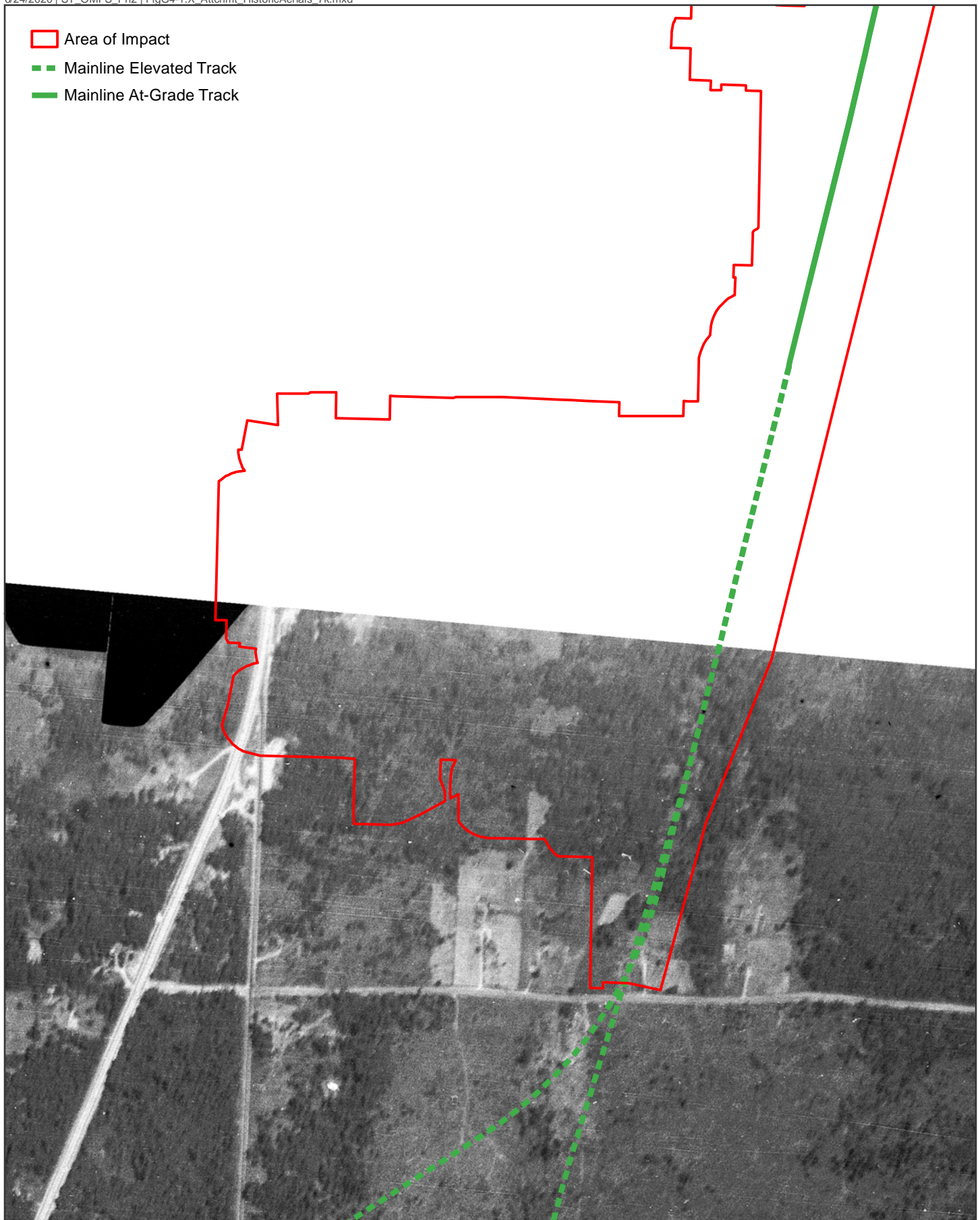
Data Sources: King County; Cities of Des Moines, Federal Way, Kent (2019).

FIGURE G4-1.9
1935 Historic Aerial
South 336th Street Alternative

OMF South



0 500 1,000 Feet



Data Sources: King County; Cities of Des Moines, Federal Way, Kent (2019).

FIGURE G4-1.10
1941 Historic Aerial
South 336th Street Alternative

OMF South



0 500 1,000 Feet



Data Sources: King County; Cities of Des Moines, Federal Way, Kent (2019).

FIGURE G4-1.11
1957 Historic Aerial
South 336th Street Alternative

OMF South



0 500 1,000 Feet



Data Sources: King County; Cities of Des Moines, Federal Way, Kent (2019).

FIGURE G4-1.12
1965 Historic Aerial
South 336th Street Alternative

OMF South



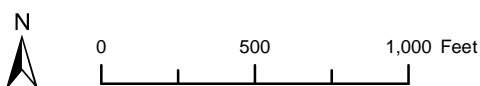
0 500 1,000 Feet

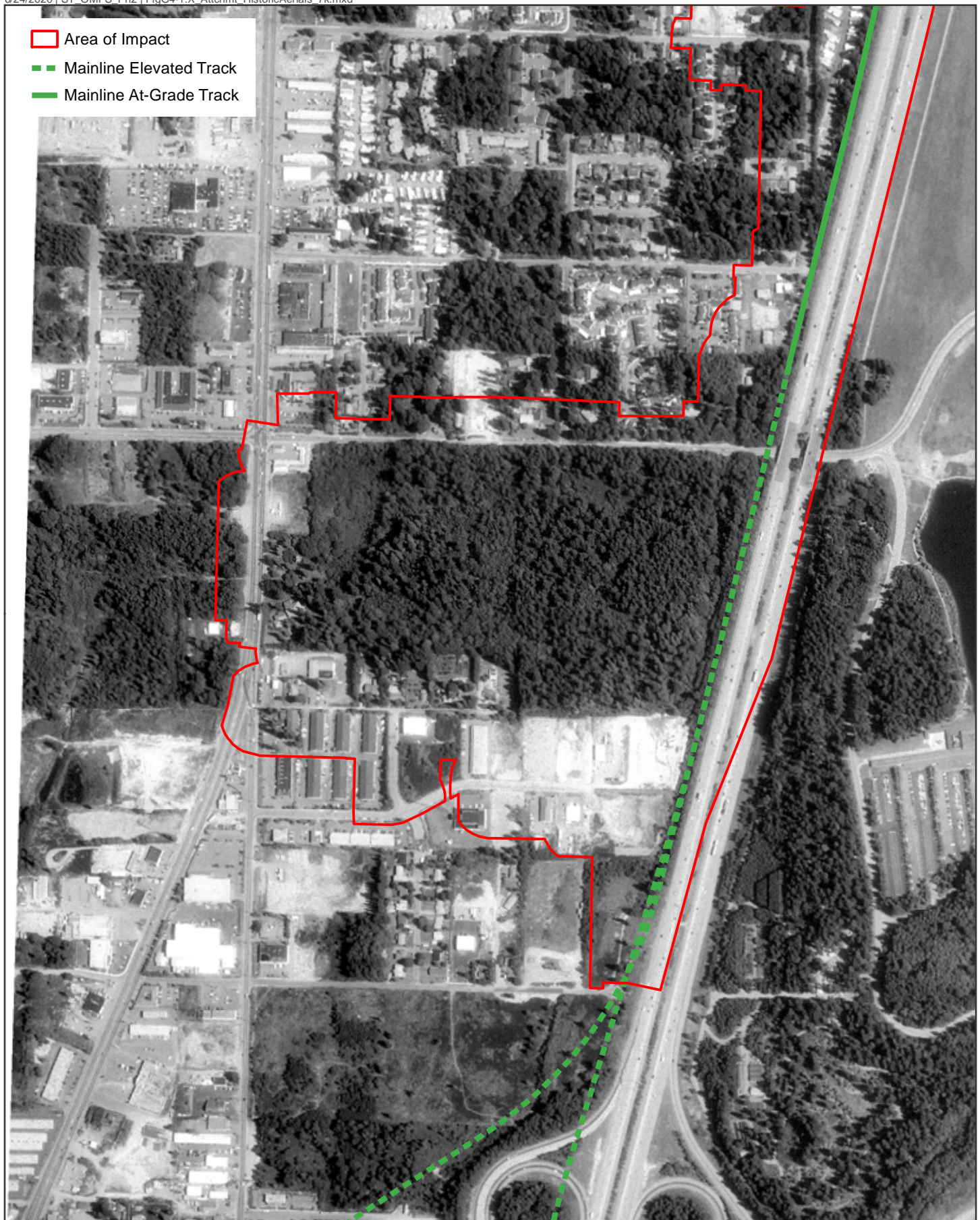


Data Sources: King County; Cities of Des Moines, Federal Way, Kent (2019).

FIGURE G4-1.13
1972 Historic Aerial
South 336th Street Alternative

OMF South





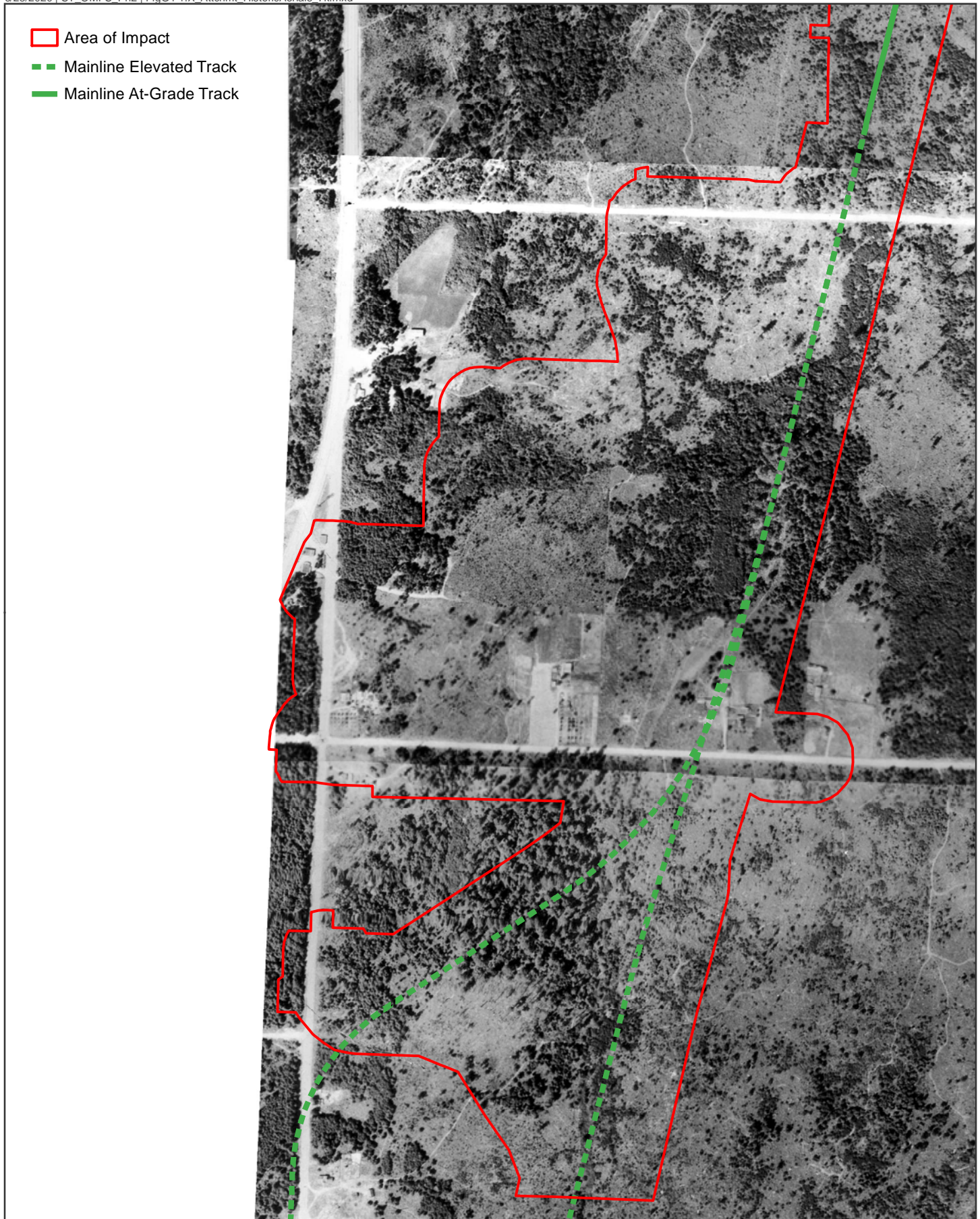
Data Sources: King County; Cities of Des Moines, Federal Way, Kent (2019).

FIGURE G4-1.14
1991 Historic Aerial
South 336th Street Alternative

OMF South



0 500 1,000 Feet



Data Sources: King County; Cities of Des Moines, Federal Way, Kent (2019).

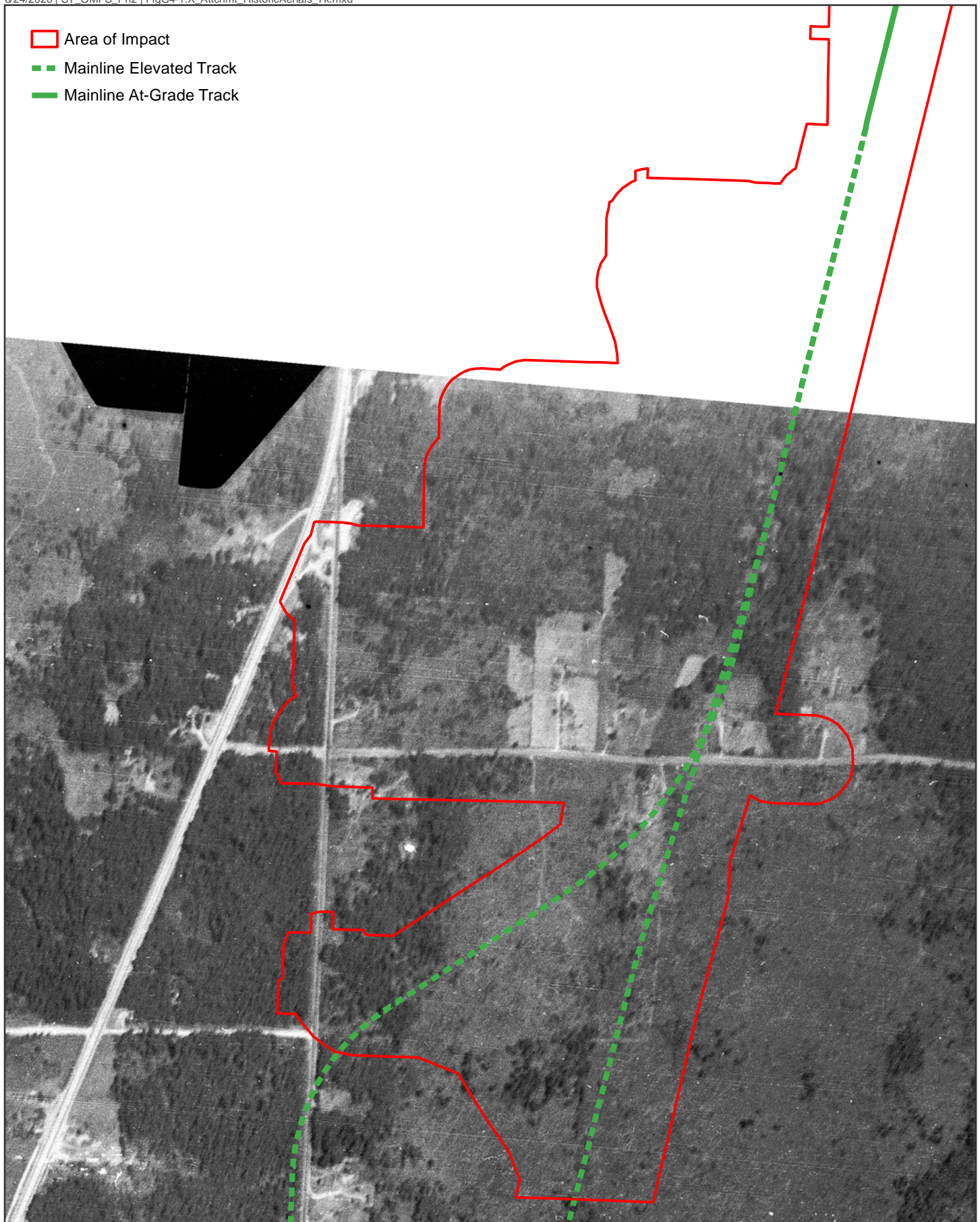
FIGURE G4-1.15
1935 Historic Aerial
South 344th Street Alternative

OMF South



0 500 1,000 Feet

A horizontal scale bar with three segments. The first segment is labeled '0', the second '500', and the third '1,000 Feet'.



Data Sources: King County; Cities of Des Moines, Federal Way, Kent (2019).

FIGURE G4-1.16
1941 Historic Aerial
South 344th Street Alternative

OMF South



0 500 1,000 Feet



Data Sources: King County; Cities of Des Moines, Federal Way, Kent (2019).

FIGURE G4-1.17
1957 Historic Aerial
South 344th Street Alternative

OMF South



0 500 1,000 Feet



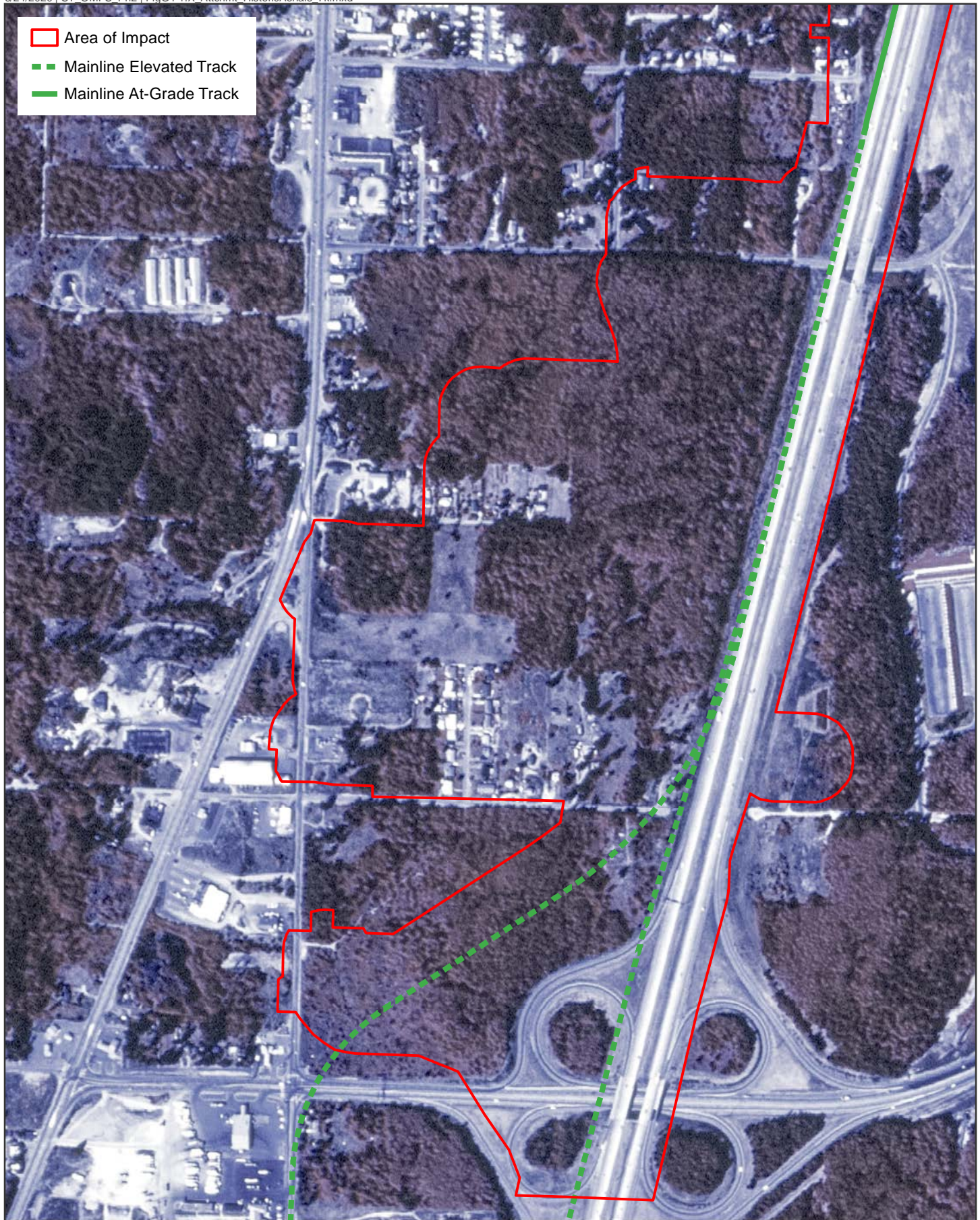
Data Sources: King County; Cities of Des Moines, Federal Way, Kent (2019).

FIGURE G4-1.18
1965 Historic Aerial
South 344th Street Alternative

OMF South



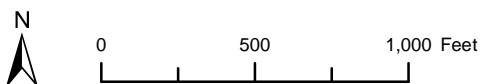
0 500 1,000 Feet

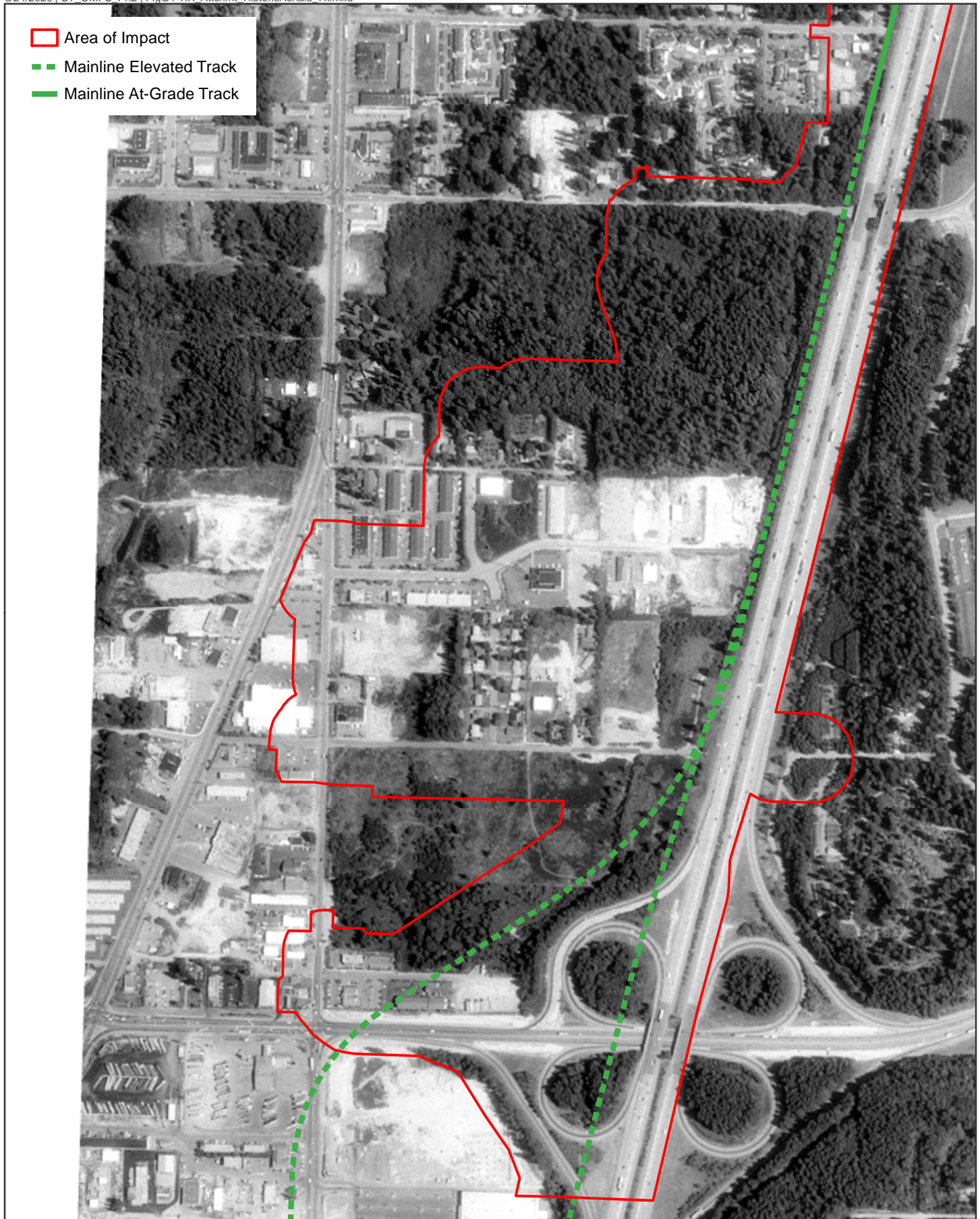


Data Sources: King County; Cities of Des Moines, Federal Way, Kent (2019).

FIGURE G4-1.19
1972 Historic Aerial
South 344th Street Alternative

OMF South





Data Sources: King County; Cities of Des Moines, Federal Way, Kent (2019).

FIGURE G4-1.20
1991 Historic Aerial
South 344th Street Alternative

OMF South



0 500 1,000 Feet

A horizontal scale bar with three segments. The first segment is labeled '0', the second '500', and the third '1,000 Feet'.



ATTACHMENT G4-2

Archaeological Shovel Probe Log

OMF South: ATCRC Shovel Probe Log – First Field Session, February 2020

SP	Field ID	Strata #	Depth (cm)	Description	Cultural Materials	Notes
1	NP6	1	28	Grey brown silty loam, 5% rounded gravels.	Negative	
		2	38	Light brown fine sandy loam, with 5% round gravels, concrete fragments.	Negative	
		3	48	Yellowish brown silty loam, 15% rounded to sub-rounded gravel - cobbles.	Negative	Glacial
		Lat (°N): -122.307762		Long (°W): 47.300495		Termination: Glacial Material
2	NP5	1	10	Loose dry non-plastic dark brown sandy loam with roots and 2% gravel. Gradual smooth transition.	Negative	
		2	25	Loose dry non-plastic brown sandy loam with roots 4% gravel - cobbles. Smooth sharp transition.	Negative	Charcoal 15 35-40cm. Root burn.
		3	50	Loose soil non-plastic tan orange sandy loam with roots and 10% gravel - cobbles. Smooth sharp transition.	Negative	
		4	64	Yellowish brown silty loam, 15% rounded to sub-rounded gravel - cobbles.	Negative	Glacial
		Lat (°N): 47.300473		Long (°W): -122.308160		Termination: Glacial Material
3	NP4	1	19	Grey brown silty loam, with 15% rounded to sub-rounded gravel - cobbles and rootlets.	Negative	
		2	38	Yellowish brown silty loam, 15% rounded to sub-rounded gravel - cobbles.	Negative	Glacial
		Lat (°N): 47.300528		Long (°W): -122.308511		Termination: Glacial Material
4	NP3	1	18	Grey brown silty loam, 15% rounded to sub-rounded gravel and cobbles.	Negative	
		2	29	Yellowish brown silty loam, 15% round to sub-rounded gravel - cobbles.	Negative	Glacial
		Lat (°N): 47.300473		Long (°W): -122.308833		Termination: Glacial Material
5	NP2	1	10	Loose hard dry non plastic dark brown sandy loam with many roots, 3% gravel. Clear smooth transition.	Negative	
		2	30	Dry loose non-plastic brown sandy loam, with many roots 5% gravel - cobbles. Sharp smooth transition.	Negative	
		2	40	Grey-brown sandy loam, with many rounded to sub-round gravels and cobbles.	Negative	Glacial
		Lat (°N): 47.300502		Long (°W): -122.309221		Termination: Glacial Material
6	NP1	1	5	Brown silty loam, 10% rounded gravels. Rootlets.	Negative	
		2	22	Brown silty loam, mottled with grey silty loam, with >5% gravels.	Negative	
		3	44	Yellowy brown fine sandy loam with 15% round - sub-rounded gravel and cobbles.	Negative	Glacial
		Lat (°N): 47.300515		Long (°W): -122.309532		Termination: Glacial Material

OMF South: ATCRC Shovel Probe Log – First Field Session, February 2020 (continued)

SP	Field ID	Strata #	Depth (cm)	Description	Cultural Materials	Notes
7	NC1	1	18	Dark brown soft moist loam, with 5% gravel and cobbles.	Negative	
		2	40	Grey brown moist semi-plastic sand-silt with clay pockets and 5% cobbles and gravel and charcoal.	Negative	
		3	60	Very loose moist non-plastic unsorted, brown and grey silty sand with 5% gravels and cobbles.	Negative	Auger beginning at 90cmbs
		4	105	Very loose, moist, non-plastic, unsorted, brown, grey, and orange silty sand with 5% gravels and cobbles.	Negative	
		5	110	Compact grey silt weathered to orange with >5% gravels.	Negative	Possible glacial material
		Lat (°N): -122.310115			Long (°W): 47.300388	
8	NC2	1	25	Dark brownish loam with plenty of organics, with 5% gravels.	Negative	
		2	27	Red loam. Decomposed cedar and bark.	Negative	
		3	55	Grey brown plastic and soft silt and coarse sand with 10% gravel and 5% cobble.	Negative	
		4	62	Grey and yellow brown silt and coarse sand with 10% gravels and cobbles.	Negative	Glacial
		Lat (°N): -122.310144			Long (°W): 47.300117	
9	NC6	1	10	Humic layer. Brown loose loam with 10% round gravels.	Concrete 10+ cm	
		Lat (°N): -122.310060			Long (°W): 47.299762	
10	NC3	1	17	Dark brown soft and somewhat plastic silt/loam.	Negative	Fill
		2	40	Light brown dry soft and semi-plastic clayey silt with 5% pebbles.	Negative	Fill
		3	50	Gray slightly dry soft and semi-plastic clayey silt.	Negative	Fill
		4	55	Hard brown dry silt and coarse sand with 10% sub-rounded gravel.	Negative	Fill
		5	105	Grey highly plastic very soft clay with silt at top. Ground water at top.	Negative	
		Lat (°N): -122.310582			Long (°W): 47.299729	
11	NC4	1	3	Black brown loam with loose organics.	Negative	
		2	25	Grey brown dry hard semi-plastic silty/clay with 5% gravels.	Negative	
		3	44	Grey brown and red brown silty/clay and burnt root.	Negative	
		4	50	Grey dry soft semi-plastic silty loam with >5% gravels.	Negative	
		5	54	Orange brown coarse sand and silt with 15% gravels.	Negative	Glacial
		Lat (°N): -122.310687			Long (°W): 47.299482	

OMF South: ATCRC Shovel Probe Log – First Field Session, February 2020 (continued)

SP	Field ID	Strata #	Depth (cm)	Description	Cultural Materials	Notes
12	NC5	1	5	Humic layer. Loose dark brown loam.	Negative	
		2	45	Very loose soft non-plastic dry brown silt with fragments of hard grayish silt and 5% rounded gravel.	Negative	
		3	90	Very loose soft dry non-plastic silt with 5% rounded gravel.	Negative	
		4	95	Soft grey moist and highly plastic silty clay.	Negative	
		5	100	Unsorted, somewhat firm, moist, semi-plastic silt with 10% gravels.	Plastic film	
		Lat (°N): -122.311027		Long (°W): 47.299164		Termination: Depth
13	NC7	1	5	Humic layer. Brown loose loam with lots of organics.	Negative	
		2	55	Brown light brown loose semi coarse sand with 10% round gravels.	Negative	Construction fill.
		Lat (°N): -122.310746		Long (°W): 47.298896		Termination: Boulder
14	NC8	1	25	Humic layer. Dark brown loam with lots of organics and 5% rounded gravels.	Negative	
		2	55	Grey brown very compact coarse loam and sand with 10% rounded gravels.	Negative	Glacial
		Lat (°N): -122.311013		Long (°W): 47.298673		Termination: Glacial material
15	NC9	1	6	Dark brown soft slightly plastic loam.	Negative	
		2	25	Dry loose non-plastic tan/grey sandy loam, 15% sharp gravels and cobbles.	Negative	Glacial
		Lat (°N): -122.311195		Long (°W): 47.298475		Termination: Glacial material
16	NC17	1	10	Dark brown loose soft loam with 5% gravel.	Negative	On Levee
		2	50	Brown loose loam with 5% round to angular gravel.	Negative	
		3	65	Grey very compact semi-coarse sand with 10% sub-rounded gravels.	Negative	Glacial Outwash
		Lat (°N): 47.299613		Long (°W): -122.312386		Termination: Extreme compaction, boulder (Glacial Material)
17	NC16	1	7	Humic layer. Dark brown loam.	Negative	On Levee
		2	40	Very loose brown dry and non-plastic sandy silt with 8% gravel to cobbles.	Negative	
		3	52	Dry loose non-plastic tan/grey sandy loam, 15% gravels and cobbles.	Negative	Glacial
		Lat (°N): 47.299137		Long (°W): -122.312447		Termination: Glacial material
18	NC10	1	25	Brown compact loam with 15% sub-angular gravels.	Negative	
		2	40	Orange brown very compact silty loam with 10% rounded gravels and cobbles.	Negative	Glacial
		Lat (°N): 47.298578		Long (°W): -122.312419		Termination: Glacial material

OMF South: ATCRC Shovel Probe Log – First Field Session, February 2020 (continued)

SP	Field ID	Strata #	Depth (cm)	Description	Cultural Materials	Notes
19	NC11	1	5	Humic layer. Soft moist dark brown loam.	Negative	
		2	18	Dark brown soft and non-plastic loose silt with 8% coarse sand to small rounded cobbles.	Negative	
		3	26	Orange brown unsorted silt to large rounded pebbles.	Negative	Glacial
		Lat (°N): 47.298557		Long (°W): -122.312693		Termination: Glacial material
20	NC12	1	10	Humic layer. Brown dark loam with >5% gravels.	Negative	
		2	20	Loose brown loam with 5% gravels.	Negative	
		3	30	Brown and red sand with 10% rounded gravels.	Negative	Glacial
		Lat (°N): 47.299120		Long (°W): -122.313082		Termination: Glacial material
21	NC13	1	15	Humic layer. Dark brown loam.	Negative	
		2	62	Loose dark brown dry and non-plastic silt to sand with 5% rounded gravel with occasional slate fragments. Lens of firm grey clay between 42-54 and 35-39 disrupted halfway through the probe.	Negative	
		3	72	Non plastic very compact very coarse sand with 15+% gravels.	Negative	Compacted stream bed
		Lat (°N): 47.299358		Long (°W): -122.313077		Termination: Refusal: Cobbles
22	NC14	1	20	Humic fill. Brown loose fill.	Negative	
		2	70	Dark brown compact fill.	Negative	
		Lat (°N): 47.299387		Long (°W): -122.312791		Termination: Refusal- Cobbles
23	NC15	1	10	Dark brown loose loam with >5% gravels and rootlets.		
		2	30	Brown loose loam with 5% rounded gravels.	Red roof tile. Not historic.	
		3	45	Red-brown loose loam with 5% rounded gravels.	Negative	
		4	50	Orange brown coarse sand with 5-10% gravels.	Negative	Glacial
		Lat (°N): 47.299124		Long (°W): -122.312808		Termination: Glacial material
24	NP14	1	5	Blackish brown silty loam, with many rootlets.	Negative	
		2	15	Grey fine sandy loam, 15% sub-rounded to sub-angular gravel - cobbles, very compact.	Negative	Fill. Highly compacted access roadway
		Lat (°N): 47.298583		Long (°W): -122.312045		Termination: Roadway
25	NP15	1	20	Brown silty loam, many rootlets.	Negative	
		2	24	Yellowish brown fine sandy loam with 15% rounded to sub-rounded gravel - cobbles.	Negative	Glacial
		Lat (°N): 47.298337		Long (°W): 47.298337		Termination: Glacial material
26	NP16	1	14	Grey fine sandy loam, 15% sub-rounded to sub-angular gravel - cobbles, very compact. Covered in light vegetation.	Negative	Compacted glacial covered in light vegetation
		Lat (°N): 47.298073		Long (°W): -122.312004		Termination: Glacial material

OMF South: ATCRC Shovel Probe Log – First Field Session, February 2020 (continued)

SP	Field ID	Strata #	Depth (cm)	Description	Cultural Materials	Notes
27	NP17	1	6	Humic layer loose dry non-plastic dark brown sandy loam, with 2% gravel.	Negative	
		2	57	Grey fine sandy loam, 15% sub-rounded to sub-angular cobbles and gravels, very compact.	Negative	Fill
		3	60	Grey-brown sandy loam, with many rounded to sub-round gravels and cobbles.	Negative	Glacial
		Lat (°N): 47.298381		Long (°W): -122.311645		Termination: Glacial material
28	NP18	1	10	Brown silty loam, many rootlets.	Negative	
		2	22	Grey-brown sandy loam, with many rounded to sub-round gravels and cobbles.	Negative	Glacial
		Lat (°N): 47.298301		Long (°W): -122.311218		Termination: Glacial material
29	NP19	1	7	Humic layer. Loose dry non-plastic dark brown sandy loam, with 3% gravels. Sharp transition.	Negative	
		2	38	Grey-brown sandy loam, with many rounded to sub-round gravels and cobbles.	Negative	Glacial
		Lat (°N): 47.298129		Long (°W): -122.311003		Termination: Glacial material
30	NP20	1	8	Humic layer. Brown silty loam.	Negative	
		2	35	Yellowish brown silty loam, with 15% rounded to sub-rounded cobbles and gravels and rootlets.	Negative	Glacial
		3	42	Grey-brown sandy loam, with many rounded to sub-round gravels and cobbles.	Negative	Glacial
		Lat (°N): 47.297936		Long (°W): -122.310704		Termination: Glacial material
31	NP21	1	27	Humic layer. Loose dry, non-plastic, dark brown, sandy loam, with 1% gravel. Smooth gradual transition.	Negative	
		2	70	Dry loose non-plastic dark brown sandy loam, 15% gravels and cobbles.	Negative	Fill
		Lat (°N): 47.297940		Long (°W): -122.310179		Termination: Refusal- root
32	NP22	1	5	Humic layer. Loose dry, non-plastic dark brown, sandy loam, with 1% gravels.	Negative	
		2	32	Yellowish brown compact silty loam, 15% rounded to sub-rounded cobbles and gravels.	Negative	Glacial
		Lat (°N): 47.297913		Long (°W): -122.309790		Termination: Glacial material
33	NP23	1	8	Blackish brown silty loam, with rootlets.	Negative	
		2	38	Yellowish brown compact silty loam, 15% rounded to sub-rounded cobbles and gravels.	Negative	Glacial
		Lat (°N): 47.297923		Long (°W): -122.309523		Termination: Glacial material

OMF South: ATCRC Shovel Probe Log – First Field Session, February 2020 (continued)

SP	Field ID	Strata #	Depth (cm)	Description	Cultural Materials	Notes
34	NP24	1	8	Dark brown silty loam, with many rootlets.	Negative	
		2	34	Yellowish brown compact silty loam, 15% rounded to sub-rounded cobbles and gravels.	Negative	Glacial
		3	44	Grayish brown sandy loam, 15% rounded to sub-rounded cobbles and gravel.	Negative	Glacial
		Lat (°N): 47.297929		Long (°W): -122.308835		Termination: Glacial material
35	NP25	1	10	Brown silty loam, many rootlets.	Negative	
		2	29	Yellowish brown fine sandy loam, 15% sub-rounded to sub-angular cobbles and gravels.	Negative	Glacial
		3	39	Grayish brown sandy loam, 15% rounded to sub-rounded cobbles and gravel.	Negative	Glacial
		Lat (°N): 47.297901		Long (°W): -122.308488		Termination: Glacial material
36	NP26	1	6	Humic layer. Brown silty loam, many rootlets.	Negative	
		2	25	Yellowish brown fine sandy loam, with 15% rounded to sub-rounded cobbles and gravels.	Negative	Glacial
		3	35	Grayish brown sandy loam, 15% rounded to sub-rounded cobbles and gravel.	Negative	Glacial
		Lat (°N): 47.297840		Long (°W): -122.308203		Termination: Glacial material
37	NP27	1	15	Dark brown silty loam, with many roots.	Negative	
		Lat (°N): 47.297637		Long (°W): -122.308197		Termination: Extensive root system
38	NP28	1	10	Dark brown silty loam, with many rootlets.	Negative	
		Lat (°N): 47.297391		Long (°W): -122.308154		Termination: Utilities (PVC pipe)
39	NP29	1	7	Dark brown silty loam with many rootlets.	Negative	
		2	32	Yellowish brown fine sandy loam, 15% rounded to subrounded cobbles and gravels.	Negative	Glacial
		Lat (°N): 47.297291		Long (°W): -122.308198		Termination: Glacial material
40	NP7	1	4	Humic layer. Loose dry non-plastic dark brown sandy loam with 4% gravel. Clear smooth transition.	Negative	
		2	24	Loose damp, non-plastic brown sandy loam, with 7% gravel - cobbles. Sharp smooth transition.	Negative	
		3	60	Grey-brown sandy loam, with many rounded to sub-round gravels and cobbles.	Negative	Glacial
		Lat (°N): 47.298063		Long (°W): -122.306225		Termination: Glacial Material
41	NP8	1	8	Brown silty loam, with grass rootlets.	Negative	
		2	12	Grey fine sandy loam with many round to sub-round gravel - cobbles. Very compact.	Negative	

OMF South: ATCRC Shovel Probe Log – First Field Session, February 2020 (continued)

SP	Field ID	Strata #	Depth (cm)	Description	Cultural Materials	Notes
		3	22	Grey-brown sandy loam, with many rounded to sub-round gravels and cobbles.	Negative	Glacial
		Lat (°N): 47.298111		Long (°W): -122.305770		Termination: Glacial Material
42	NP9	1	5	Humic layer. Brown gravelly fill.	Negative	
		2	30	Grey-brown sandy loam, with many rounded to sub-round gravels and cobbles.	Negative	Glacial
		Lat (°N): 47.298366		Long (°W): -122.306260		Termination: Glacial Material
43	NP10	1	14	Grey fine sandy loam, 15% sub-rounded to sub-angular gravel - cobbles, very compact.	Negative	Fill
		Lat (°N): 47.298413		Long (°W): -122.305910		Termination: Fill Verification (Mound created 2015-Google Earth)
44	NP11	1	15	Grey fine sandy loam, 15% sub-rounded to sub-angular gravel - cobbles, very compact.	Negative	Fill
		Lat (°N): 47.298368		Long (°W): -122.305510		Termination: Fill Verification (Mound created 2015-Google Earth)
45	NP12	1	12	Grey fine sandy loam, 15% sub-rounded to sub-angular gravel - cobbles, very compact.	Negative	
		Lat (°N): 47.298283		Long (°W): -122.305712		Termination: Fill Verification (Mound created 2015-Google Earth)
46	NP13	1	10	Grey fine sandy loam, 15% sub-rounded to sub-angular gravel - cobbles, very compact.	Negative	Fill
		Lat (°N): 47.298269		Long (°W): -122.306011		Termination: Fill Verification (Mound created 2015-Google Earth)
47 A	NC28A	1	15	Brown loose loam with 5% gravels.	Negative	
		2	20	Brick fragments in black loose semi-burnt soil.	Modern brick fragments and burnt unidentified material.	
		Lat (°N): -122.307409		Long (°W): 47.296970		Termination: Densely packed unset modern bricks
47B	NC28B	1	15	Brown loose loam with 5% gravels.	Negative	Offset 5-meters West of NC28A
		2	30	Skewed brick fragments in black loose semi-burnt soil.	Modern brick fragments two >1cm, clear glass fragments, one ceramic fragments, 1 stone brick, 1 fragment of charcoal	No diagnostic material
		3	40	Orange brown coarse sand with 15% rounded cobbles and gravel.	Negative	Glacial
		Lat (°N): -122.307454		Long (°W): 47.296941		Termination: Glacial material
48	NC29	1	8	Medium brown semi-plastic soft loam.	Negative	
		2	30	Poorly sorted loose non-plastic brown silt with 5% rounded cobbles.	Negative	
		3	42	Glacial Unsorted hard and nonplastic orange and brown silt with 10% rounded gravels.	Negative	
		Lat (°N):		Long (°W):		Termination: Glacial material

OMF South: ATCRC Shovel Probe Log – First Field Session, February 2020 (continued)

SP	Field ID	Strata #	Depth (cm)	Description	Cultural Materials	Notes
49	NP30	1	35	Grey fine compact sandy loam with 15% round to sub-rounded cobbles and gravels.	Negative	Modified gravel roadway, ca. 2005, utilities to east, boulder to north, slope west
		Lat (°N): 47.296648		Long (°W): -122.307306		Termination: Extreme compaction
50	NC30	1	15	Black brown soft wet semi-plastic loam.	Negative	
		2	45	Very compact grey sandy silty clay with 15+% sub-angular rounded gravels and 1 rounded boulder.	Negative	
		Lat (°N): -122.307462		Long (°W): 47.296493		Termination: Boulder and extreme compaction
51	NP31	1	35	Dark brown silty loam, with 15% subangular cobbles and gravels.	Brick fragments and burnt unidentified material.	SE corner of landform with utilities to east and south
		Lat (°N): 47.296287		Long (°W): -122.307250		Termination: Extreme compaction
52	NC20	1	60	Brown loose loam and sand with 15-20% gravels. Concrete rubble and cobbles.	Negative	Modern fill
		Lat (°N): -122.308395		Long (°W): 47.296557		Termination: Refusal
53	NC19	1	70	Modern fill. Brown loose loam with fine sand and 10% round gravels and 5% round cobbles.	Negative	
		Lat (°N): -122.308503		Long (°W): 47.296430		Termination: Concrete
54	NC18	1	15	Modern trash pile.	Negative	
		Lat (°N): -122.308681		Long (°W): 47.296289		Termination: Refusal / Concrete
55	NC27	1	1	Bark chips.	Negative	
		2	20	Moist, soft, grey, semi-plastic, silty loam.	Negative	Topsoil
		3	25	Grey and orange non-plastic and unsorted silt with 5% pebbles and gravels.	Negative	Glacial
		Lat (°N): -122.309580		Long (°W): 47.295965		Termination: Glacial material
56	NC26	1	1	Bark chips.	Negative	
		2	10	Moist, soft, grey, semi-plastic, silty loam.	Negative	Topsoil
		3	17	Grey and orange non-plastic and unsorted silt with 5% pebbles and gravels.	Negative	Glacial
		Lat (°N): -122.309985		Long (°W): 47.295748		Termination: Glacial material
57	NC25	1	20	Brown grey semi plastic loose loam with >3% rounded gravels.	Negative	Topsoil
		2	35	Orange mottled brown coarse sand with 10% rounded gravels.	Negative	Glacial
		Lat (°N): -122.309861		Long (°W): 47.295562		Termination: Glacial material
58	NC24	1	1	Bark chips.	Negative	
		2	10	Moist, soft, grey, semi-plastic, silty loam.	Negative	Topsoil
		3	30	Unsorted brown soft, loose, non-plastic silt with 5% subangular pebbles.	Negative	Modern fill
		Lat (°N): -122.309996		Long (°W): 47.295361		Termination: Sprinkler system
59	NC23	1	1	Bark chips.	Negative	

OMF South: ATCRC Shovel Probe Log – First Field Session, February 2020 (continued)

SP	Field ID	Strata #	Depth (cm)	Description	Cultural Materials	Notes
		2	10	Topsoil. Moist, soft, grey, semi-plastic, silty loam.	Negative	
		3	15	Glacial Grey and orange non-plastic and unsorted silt with 5% pebbles and gravels.	Negative	
		Lat (°N): -122.309798		Long (°W): 47.295334		Termination: Glacial material
60	NC22	1	12	Dark brown loam soft and somewhat plastic clayey silt with high organic content.	Negative	In standing water
		2	20	Dark brown dry and loose non-plastic silt with low clay content.	Negative	
		3	30	Glacial Orange silt with small rounded gravel.	Negative	
		Lat (°N): -122.308641		Long (°W): 47.295251		Termination: Glacial material
61	NC21	1	12	Dark brown loam soft and somewhat plastic clayey silt with high organic content.	Negative	
		2	20	Dark brown dry and loose non-plastic silt with low clay content.	Negative	
		3	30	Orange silt with small rounded gravel.	Negative	Glacial
		Lat (°N): -122.308353		Long (°W): 47.295252		Termination: Glacial material

OMF South: ATCRC Shovel Probe Log – 45KI1542 Historic Period Foundation, June 2020

SP	Field #	Strata #	Depth (cm)	Description	Cultural Materials	Notes
01-1	C3	1	20	Dark brown loose, unsorted silty loam/trash.	Glass, plastic	
		2	78	Loose brown silty fill.	Negative	Moist below ~75 cm
		3	85	Beige, compact, unsorted silt to cobbles, 20% gravel-cobbles.	Negative	Glacial
		Latitude: -122.312232		Longitude: 47.299105	Termination: Glacial material	
01-2	C1	1	26	Medium brown loose, unsorted silty loam/trash, 25% gravel-gobbles.	Glass, hair band, plastic, charcoal	
		2	40	Compact, unsorted beige silt to cobbles, 40% gravel-cobbles.	Negative	Glacial
		Latitude: -122.312229		Longitude: 47.299061	Termination: Glacial material	
01-3	JM3	1	40	Dark brown silty loam and trash with gravel to cobbles.	Metal barrel tie fragment, twist knob, nail/key	
		2	70	Orangish brown glacial material with rodent burrows.	Negative	Glacial
		Latitude: -122.312128		Longitude: 47.299088	Termination: Glacial material	
01-4	C2	1	12	Dark brown loose, unsorted silty loam/trash, 20% gravel-cobbles.	Glass, metal fragments, cloth, plastic, terra cotta	
		2	60	Medium brown loose cobbly silt.	Negative	Fill
		3	100	Light gray sandy silty material	Negative	Fill (?) auger from 60 cmbs
		Latitude: 47.299046		Longitude: -122.312121	Termination: cobble layer	
01-5	JM1	1	25	Loose dark brown loam with modern debris.	Marbles, crack pipe	
		2	40	Light brown to light orange-brown sandy silt.	Sampling contaminated by wall collapse	Glacial
		Latitude: 47.299012		Longitude: -122.312236	Termination: Glacial material	
01-6	JM2	1	~15	Dark brown loam and modern trash.	Plastics, foil, charcoal, assorted modern trash	
		2	~35	Bright orange silt, mottled below 30 cm	Charcoal	Burned wood layer around 30 cm interrupting orange silt
		3	70	Mottled orange glacial material.	Negative	Glacial, auger from 60 cmbs
		Latitude: 47.299009		Longitude: -122.312164	Termination: Glacial material	
01-7	JM6	1	10	Dark brown loam and trash.	Glass, plastics, crack pipe	
		2	25	Mottled light brown silty sand with gravel-cobbles.	Red brick, Fiestaware fragments	
		3	60	Orange glacial material.	Negative	Glacial
		Latitude: 47.299021		Longitude: -122.312038	Termination: Glacial material	
01-8	C4	1	10	Dark brown loose, unsorted silty loam/trash.	Glass	
		2	40	Orange-beige compact, unsorted silt to pebbles.	Negative	Glacial
		Latitude: 47.298965		Longitude: -122.312216	Termination: Glacial material	
01-9	JM7	1	20	Dark brown loam.	Negative	
		2	50	Brown silty sand to sand with gravel and cobbles.	Negative	
		3	70	Orange glacial material.	Negative	Glacial
		Latitude: 47.298981		Longitude: -122.312023	Termination: Glacial material	

OMF South: ATCRC Shovel Probe Log – 45KI1542 Historic Period Foundation, June 2020 (continued)

SP	Field #	Strata #	Depth (cm)	Description	Cultural Materials	Notes
01- 10	C5	1	8	Dark brown loose, unsorted silty loam/trash.	Glass shards, glass bottle, plastic shards, plastic bag, needle cap	
		2	25	Light brown gravelly silt.	Negative	Fill
		3	45	Light orange/beige compact, unsorted silt to cobbles.	Negative	Glacial
		Latitude: 47.298915		Longitude: -122.312232		Termination: Glacial material
01- 11	JM4	1	15	Brown loam	Negative	
		2	35	Orange glacial material	Negative	
		Latitude: -122.312134		Longitude: 47.298941		Termination: Glacial material
01- 12	JM5	1	10	Brown loam.	Melted glass, crack pipe fragment, glass fragments	
		2	20	Light brown loam.	Negative	
		3	30	Orange glacial material	Negative	Glacial
		Latitude: 47.298932		Longitude: -122.312071		Termination: Glacial material
01- 13	ND3	1	30	Black brown loose sandy loam with 5% rounded gravels.	Modern nails, glass, metal fragments @ 5 cm	
		2	40	Orange-brown compact coarse sand with 10-15% gravels.	Negative	Glacial
		Latitude: 47.298937		Longitude: -122.311991		Termination: Glacial material
01- 14	C6	1	26	Dark brown loose, unsorted silty loam/trash.	Glass, plastic	
		2	37	Orange-beige compact, unsorted silt to pebbles	Negative	Glacial
		Latitude: 47.298904		Longitude: -122.312152		Termination: Glacial material
01- 15	ND1	1	12	Black brown loose wet loam with 5% rounded gravels (3-7 cm).	Negative	
		2	33	Orange very compact coarse sand with 15% rounded gravel.	Negative	Glacial
		Latitude: 47.298935		Longitude: -122.311990		Termination: Glacial material
01- 16	C9	1	16	Dark brown loose, unsorted silty loam.	Negative	
		2	30	Dark beige compact, unsorted silt to cobbles.	Negative	Glacial
		Latitude: 47.298888		Longitude: -122.311991		Termination: Glacial material
01- 17	C10	1	20	Dark brown loose, unsorted silty loam	Aluminum can, brick, roof tile, metal rod	
		2	35	Beige, compact, unsorted silt to cobbles.	Negative	Glacial
		Latitude: 47.298863		Longitude: -122.312232		Termination: Glacial material
01- 18	C7	1	25	Dark brown loose, unsorted silty loam/trash.	Pants, shoe, reflector, glass	Moved, too close to ant colony
		2	35	Beige, compact, unsorted silt to cobbles, 40% gravel-cobbles	Negative	Glacial
		Latitude: 47.298860		Longitude: -122.312150		Termination: Glacial material
01- 19	C8	1	30	Dark brown loose, unsorted silty loam.	Negative	
		2	42	Orange-beige compact, unsorted silt to pebbles.	Negative	Glacial
		Latitude: 47.298855		Longitude: -122.312052		Termination: Glacial material

OMF South: ATCRC Shovel Probe Log – 45KI1542 Historic Period Foundation, June 2020 (continued)

SP	Field #	Strata #	Depth (cm)	Description	Cultural Materials	Notes
01- 20	ND2	1	20	Black brown loose sandy loam with 5% rounded gravels (3-7 cm).	Negative	
		2	35	Mixed brown loam and gray sand with 3% gravel (1-5 cm).	Negative	
		3	60	Red-brown sandy loam w/ 10% subangular gravel.	Negative	
		4	66	Orange-brown coarse sand with 10% subrounded gravel.	Negative	Glacial
		Latitude: 47.298866		Longitude: -122.311947	Termination: Glacial material / Aggressive ant attack	

OMF South: ATCRC Shovel Probe Log – 45KI1543 Historic Period Debris Scatter, June 2020

SP	Field #	Strata #	Depth (cm)	Description	Cultural Materials	Notes
02- 1	ND4	1	5	Brown loose sandy loam.	6+ brick fragments	
					2 glass fragments	
					1 brown beer bottle	
		2	30	Brown loose sandy loam with layer of jumbled bricks.	12+ brick fragments	
					6+ roof tile fragments (smooth on one side)	
					3 clear glass shards	
		3	35	Gray and brown mottled soil with ceramic inclusions.	20+ small brick fragments (<5 cm)	
					4 large brick fragments	
					1 whole brick	
					2 plastic fragments	
		4	42	Gray silty loam with 5% rounded gravel.	None	Fill
		5	44	Brown/gray sandy loam with 5% rounded gravel.	None	Fill
		6	50	Orange/brown compact silt to coarse sand with 10% gravel.	None	Glacial
		Latitude: 47.296956		Longitude: -122.307414		Termination: Glacial material
02- 2	ND5	1	20	Brown loose sandy loam with 5% rounded gravel and 5% brick fragments.	12+ brick fragments	
		2	30	Brick rubble and charcoal in sandy loam.	None	
		Latitude: 47.296985		Longitude: -122.307412		Termination: brick density
02- 3	ND6	1	20	Brown loose sandy loam with 5% gravel and 5% brick fragments.	None	Whole brick density at 20 cm
		Latitude: 47.297003		Longitude: -122.307413		Termination: brick density
02- 4	ND7	1	22	Brown loose sandy loam with 5% gravel.	2 ceramic fragments	
		2	32	Orange compact silt to coarse sand with 10% rounded gravel.	None	Glacial
		Latitude: 47.297017		Longitude: -122.307409		Termination: Glacial material
02- 5	ND8	1	12	Brown loose sandy loam with 5% rounded gravel.	None	Fill
		2	25	Orange/brown compact silt to coarse sand with 10% rounded gravel.	None	Glacial
		Latitude: 47.297033		Longitude: -122.307411		Termination: Glacial material
02- 6	ND12	1	20	Brown loose sandy loam with 5% rounded gravel.	None	Fill
		2	30	Orange compact silt to coarse sand with 15% rounded gravel.	None	Glacial
		Latitude: 47.297013		Longitude: -122.307459		Termination: Glacial material
02- 7	ND11	1	20	Brown loose sandy loam with 5% rounded gravel.	None	Fill
		2	40	Orange/brown compact silt to coarse sand with 10% rounded gravel.	None	Glacial
		Latitude: 47.296988		Longitude: -122.307460		Termination: Glacial material

OMF South: ATCRC Shovel Probe Log – 45KI1543 Historic Period Debris Scatter, June 2020 (continued)

SP	Field #	Strata #	Depth (cm)	Description	Cultural Materials	Notes
02- 8	ND10	1	25	Brown loose sandy loam with 5% rounded gravel and large cedar roots.	2 brick fragments between 10 and 15 cm	
		2	35	Orange/brown compact silt to coarse sand with 10% subrounded gravel.	None	
		Latitude: 47.296966		Longitude: -122.307455		Termination: Glacial material
02- 9	ND9	1	25	Brown loose sandy loam with 5% rounded gravel and 1 large (10 by 20 cm) angular cobble	5 brick fragments 1 charcoal fragment	
		2	36	Orange/brown compact silt to coarse sand with 10% subrounded gravel.	None	Glacial
		Latitude: 47.296943		Longitude: -122.307457		Termination: Glacial material
02- 10	ND13	1	16	Brown loose sandy loam with 5% rounded gravel.	1 brick fragment	
		2	26	Orange compact silt to coarse sand with 10% rounded gravel.	None	Glacial
		Latitude: 47.296931		Longitude: -122.307468		Termination: Glacial material
02- 11	ND14	1	20	Brown loose sandy loam with 10% rounded gravel	Plastic sheet at 20 cm	Fill
		2	37	Light brown loose sandy loam with 10% rounded gravel.	None	Fill
		3	43	Orange compact silt to coarse sand with 15% rounded gravel	None	Glacial
		Latitude: 47.296932		Longitude: -122.307493		Termination: Glacial material
02- 12	ND15	1	25	Brown loose sandy loam with 5% rounded gravel.	None	Fill
		2	35	Orange compact silt to coarse sand with 10% rounded gravel.	None	Glacial
		Latitude: 47.296933		Longitude: -122.307517		Termination: Glacial material
02- 13	C11	1	20	Loose brown sandy cobbly loam and brick fragments.	5 clear unleaded glass shards, 1-2 cm	
					2 leather patches, 1-4 cm	
					1 plastic fragment, 3 cm	
					~50 brick fragments, 0.5-10 cm	
		2	36	Gray sand and brick.	13 clear unleaded glass shards	
					4 whole bricks	
					~30 brick fragments	
		3	46	Compact cobbly brown silt to sand.	None	Glacial
		Latitude: 47.296937		Longitude: -122.307374		Termination: Glacial material
02- 14	C12	1	30	Loose brown silty loam and brick fragments with 10% gravel.	10 cm length wire	
					5 clear unleaded glass shards	
					~25 brick fragments, 0.5-10 cm	
		2	40	Compact cobbly brown silt to sand.	None	Glacial
		Latitude: 47.296937		Longitude: -122.307342		Termination: Glacial material
02- 15	C13	1	10	Extremely compact light gray silt with 5% rounded to subrounded gravel.	None	Pro-glacial lacustrine sediment
		Latitude: 47.296920		Longitude: -122.307271		Termination: Glacial material

OMF South: ATCRC Shovel Probe Log – 45KI1543 Historic Period Debris Scatter, June 2020 (continued)

SP	Field #	Strata #	Depth (cm)	Description	Cultural Materials	Notes
02- 16	C14	1	29	Loose brown sandy loam and brick fragments with 10% gravel.	6 clear unleaded glass shards, 0.75-3 cm	
					1 fragment stone countertop, 8 cm	
					~50 brick fragments	
		2	39	Compact cobbly brown silt to sand	None	Glacial
Latitude: 47.296910			Longitude: -122.307430		Termination: Glacial material	
02- 17	C15	1	12	Loose brown sandy loam and brick fragments with 10% grave.l	5 clear unleaded glass shards, 0.25-3 cm	
					~60 brick fragments	
		Latitude: 47.296884			Longitude: -122.307433	
02- 18	C16	1	21	Loose brown sandy loam and brick fragments with 10% grave.l	8 clear unleaded glass shards	
					1 white unleaded glass shard	
					1 green unleaded glass shard	
					~40 brick fragments	
		Latitude: 47.296854			Longitude: -122.307439	
02- 19	C17	1	29	Loose brown sandy loam and brick fragments with 10% gravel.	~30 clear unleaded glass shards	
					2 white unleaded glass shards	
					1 green unleaded glass shard	
					2 leather patches	
					~40 brick fragments	
		2	39	Compact cobbly brown silt to sand	None	Glacial
		Latitude: 47.296816			Longitude: -122.307439	
02- 20	C18	1	20	Loose brown sandy loam and brick fragments with 10% gravel to cobbles.	5 clear unleaded glass shards	
					2 white plastic fragments	
					2 leather patches	
					~30 brick fragments	
		2	30	Compact cobbly brown silt to sand	None	Glacial
		Latitude: 47.296775			Longitude: -122.307439	
02- 21	C19	1	15	Loose brown sandy loam with 10% gravel.	1 white tile fragment	Fill
		2	25	Compact cobbly tan silt to sand	None	Glacial
		Latitude: 47.296706			Longitude: -122.307440	
02- 22	ND16	1	15	Brown loose sandy loam with 5% rounded gravel.	None	Fill
		2	33	Extremely compact gray silt with 20% gravel to cobbles	None	Pro-glacial lacustrine sediment
		Latitude: 47.296682			Longitude: -122.307445	
02- 23	C20	1	12	Loose brown silty loam with 10% gravel.	None	Fill
		2	40	Extremely compact light gray silt with 5% rounded to subrounded gravel and pebbles.	None	Pro-glacial lacustrine sediment
		Latitude: 47.296652			Longitude: -122.307450	

OMF South: ATCRC Shovel Probe Log – 45KI1543 Historic Period Debris Scatter, June 2020 (continued)

SP	Field #	Strata #	Depth (cm)	Description	Cultural Materials	Notes	
02- 24	C21	1	94	Compact pale to tan very fine arkosic sand with 10% gravel and cobbles.	Asphalt masses at 25-40 cm and 40-60 cm		
					Brick fragments below 50 cm		
		2	100	Extremely compact light gray very fine sand with gravel to cobbles.	None	Pro-glacial lacustrine sediment	
		Latitude: 47.296282		Longitude: -122.307344		Termination: Glacial material	
02- 25	C22	1	20	Compact brown sand with 10% gravel to cobbles	Unmarked PVC pipe	Fill	
		Latitude: 47.296281		Longitude: -122.307379		Termination: Unmarked PVC pipe pair, no wire found or odor detected	
02- 26	C22.1 Moved 30cm east	1	15	Loose light brown sandy loam with 3% pebbles.	None	Fill	
		2	45	Extremely compact light gray very fine sand with moderate mottling. Contains 20% gravel to small cobbles including identifiably metamorphic clasts.	None	Pro-glacial lacustrine sediment	
		Latitude: 47.296281		Longitude: -122.307379		Termination: Glacial material	
02- 27	AV1	1	10	Dark yellowish brown sandy loam with 30% sub round-subangular pebbles and cobbles.	3 brick fragments	Fill	
		2	22	Yellowish brown sandy loam with 40% sub round-angular pebbles and cobbles.	2 brick fragments	Fill	
		3	28	Light olive brown silty sand with 30% round pebbles, cobbles, and boulders.	3 brick fragments	Fill	
		4	45	Strong brown silty sand 45% round-angular pebbles, cobbles, and boulders.	None	Fill	
		5	70	Olive brown, silty sand with 45% round-sub round pebbles, cobbles, and boulders.	2 brick fragments	Fill	
		6	90	Light brownish grey silty sand with >45% round-sub round pebbles, cobbles, boulders	None	Fill	
		7	95	Light grey silt with 50% well rounded pebbles and cobbles.	None	Pro-glacial lacustrine sediment	
		Latitude: 47.296305		Longitude: -122.307311		Termination: Glacial material	
		Notes for SP: Auger and shovel refusal- breaker bar used to proceed with excavation from 15cm.					
		All strata boundaries are sharp, clear, and well defined.					

OMF South: ATCRC Shovel Probe Log – 45KI1543 Historic Period Debris Scatter, June 2020 (continued)

SP	Field #	Strata #	Depth (cm)	Description	Cultural Materials	Notes	
02- 28	AV2	1	18	Very dark greyish brown sandy loam with 20% round-subangular pebbles and cobbles.	Numerous machine-made brick fragments, cut stone block fragments, a ceramic tile fragment, and charcoal films and degraded concentrations	Fill	
		2	20	Black sandy loam with 20% round-subangular pebbles and cobbles	Nondiagnostic clear glass fragments; numerous machine-made brick fragments, cut stone block fragments, a wire nail, an unidentified metal fragment, and charcoal films and degraded concentrations.	Fill	
		3	45	Yellowish brown silty sand with 35% rounded-subangular pebbles, cobbles, and boulders.	None	Fill	
		4	65	Brown silty sand 45% rounded-subangular pebbles, cobbles, and boulders.	None	Fill	
		5	90	Light grey silt with 45% well rounded pebbles and cobbles.	None	Pro-glacial lacustrine sediment from the early Vashon Stade	
		Latitude:47.296333			Longitude: -122.307309		Termination: Glacial material
		Notes for SP: Auger and shovel refusal, breaker bar used to proceed with excavation from 15cm.					
		All strata boundaries are sharp, clear, and well defined.					