



Operations and Maintenance Facility South

November 2019 outreach summary

Overview

As part of the voter-approved plan for regional light rail expansion, a new operations and maintenance facility (OMF) in the South Sound is needed to accommodate additional vehicles for the future 116-mile light rail system. Sound Transit will also extend Link light rail from the future Federal Way Transit Center station (opens 2024) to the Tacoma Dome (opens 2030).

This project was launched in 2018 in conjunction with the Tacoma Dome Link Extension (TDLE). Following multiple engagement periods that kicked off the environmental process, Sound Transit is currently considering three sites for the future OMF South.

In November 2019, Sound Transit conducted outreach to share the latest updates to the potential site alternatives with project neighbors, focusing on the project's timeline for decision-making. During this time TDLE also conducted a simultaneous outreach period.



Over 1,600 users participated in an online open house from Nov. 13 – Dec. 6



More than 250 people attended drop-in sessions in Federal Way and Kent



Three project email updates sent to more than **6,200** recipients on South Sound email lists



More than 43,000 mailers sent to homes, apartments and businesses along the project corridor



20+ forms of input gathered from in-person and online comment forms



16,444+ reached on Sound Transit's Facebook posts



Over 5,000 impressions and engagements on Sound Transit's Twitter posts



Notification toolkits sent to **12** local organizations to share with their constituents and members



Print and online display advertisements placed in **8** local publications



Posters distributed to **105** different locations throughout SeaTac, Kent, Des Moines, and Federal Way

Public outreach objectives

During November outreach, the team looked to:

- Explain Board action and articulate how past feedback was considered and incorporated, and explain how it informed OMF South site selections.
- Connecting with neighbors of additional sites, previously considered but not selected for study in the Draft Environmental Impact Statement (EIS), to close the loop.
- Provide context on how the project is related to Sound Transit's existing service and planned service, and how it fits into regional transit, local and regional comprehensive planning.
- Build an understanding of the project timeline, environmental review process, and opportunities for public involvement.
- Engage communities who may not traditionally participate in the planning process, including a larger and more diverse audience than during Phase 1.
- Show connection of separate projects for common stakeholders: Operations and Maintenance Facility South to Tacoma Dome Link and Federal Way Link Extension.

Note: No decisions on site selection were committed to, nor intended during this outreach period; all sites will continue to be studied and benefits and impacts will be published in the upcoming Draft EIS, expected in late 2020.

Key themes

The following themes emerged corridor-wide:

- **Commenters asked questions surrounding the property acquisition process and timeline.** Participants wanted to know how this project will affect their homes if they're within or near an alternative site. Several participants commented that they were unaware of their options if Sound Transit does need to acquire their property.
"I've noticed shops and buildings being closed North of Lowe's and along 30th Ave. Should I be concerned of the light rail coming through my house? Should I expect a letter from Sound Transit in the future?"(online survey comment)
- **Commenters recognized recent passage of I-976 could impact the project.** Many people related recent headlines to this project, expressing a strong desire for light rail to expand to the South Sound and were concerned that I-976 would affect Sound Transit's ability to deliver the project on time.
"How will I-976 affect the project timeline and budget?" (drop-in session comment)
- Participants were curious about the **environmental and engineering considerations** for each site.

Themes by site alternative:

At Midway Landfill site alternative, commenters:

- Expressed interest in understanding the types of **jobs an OMF South will provide.**
- Expressed concern about **truck and freight impacts** in neighborhoods once construction begins.



- Reflected that the **Midway Landfill site alternative** would impact fewer property owners and businesses but would have additional cost related to land settlement and cleanup.
“If it is feasible and safe, it seems like a good choice since it would allow us to use an area that would not require someone to move out and a building to be demolished. Of course, costs of making sure the site is safe may outweigh everything!” (online survey comment)

At South 336th Street site alternative, commenters:

- Were in **opposition to Federal Way site alternatives**.
- Expressed support for the **Midway Landfill site alternative**.
“Midway landfill is best choice [because] it lets us reclaim land that is otherwise unused without the displacement of other sites.” (online survey comment)
- Recognized that the **site alternative would displace residents and businesses**.
- Expressed interest in the design **status of the OMF South** and wanted to know when a site would be selected.

At South 344th Street site alternative, commenters:

- Were in **opposition to Federal Way site alternatives**.
- Recognized that the **site alternative would displace residents and businesses**.
“The Midway Landfill seems least disruptive to the surrounding area. As a resident property owner down the street of the 336th and 344th sites, I take great concern that these 2 sites are adjacent to residential and business properties. The impact on the environment with these two locations is very concerning in addition to the negative impact to our property values.” (online survey comment)
- Expressed support for Garage Town remaining at its current locations.
- Were curious about the **Puyallup tribe’s involvement in the project**.

“Have you studied the environmental impact of the 344th site? That wetland is an active salmon restoration area. Have you contacted the Puyallup tribe about this?” (online survey comment)

Outreach opportunities: In-person and online

Sound Transit advertised the outreach period via various media outlets from November 13-December 6, 2019.

Notifications included:

- Mailer.
- Poster.
- Online and print display ads for South Sound publications (including translated versions in Korean, Spanish, and Vietnamese).
- Emails to Sound Transit subscriber lists for the OMF South, Tacoma Dome Link Extension, Hilltop Tacoma Link Extension, and Federal Way Link Extension projects.
- Social media.
- “Notification toolkit” distributed to third-party organizations in the project area for their subsequent sharing.
- In-person field visits to major properties where sites were being considered.
- Briefings to organizations and cities in the project corridor.

In-person drop-in sessions

Sound Transit hosted two OMF South in-person drop-in sessions and three joint TDLE/OMF South drop-in sessions during the outreach period. These drop-in sessions were held during the week and on weekends, in the morning, afternoon, and evening to provide a variety of options for community members with varying schedules. Project staff were stationed at a project display with printed materials to answer questions about the route and station alternatives. Representatives from Sound Transit Real Property were on hand to provide information and answer questions about the property acquisition

process. Meeting locations were intended to be accessible for audiences within the project corridor. The meetings took place at the following locations:

- Nov. 12 – OMF South drop-in at Highline College
- Nov. 16 – joint TDLE/OMF South drop-in at Federal Way Library
- Nov. 19 – OMF South drop-in at Fred Meyer
- Nov. 20 – joint TDLE/OMF South drop-in at Federal Way Performing Arts Center
- Dec. 4 – joint TDLE/OMF South drop-in at Federal Way Community Center

Online open house (omfsouth.participate.online)

An online open house was available 24/7 from November 13 – December 6 to give the public an opportunity to review the three potential site alternatives put forward by Sound Transit. The website featured the same information for each site alternative that was available at the drop-in sessions. The site also included in-language content, with a landing page translated into Khmer, Korean, Russian, Spanish, and Vietnamese to provide an overview of the content as well as instructions on using Google Translate. Commenting was available to collect thoughts on the potential site alternatives that have been selected for environmental review. Visitors used the survey to ask questions about each site alternative and to voice their preference on which site should be selected. Over 1,600 unique users across over 1,685 sessions visited the online open house. Each user spent an average of about two minutes and the site was shared 18 times. Visitors arrived at the landing page via the Sound Transit website, project email updates, online display ads from South Sound publications and social media.

Audience

The outreach effort during the outreach period included a broad audience, encompassing community groups, organizations, residents, businesses, and underrepresented populations along the project corridor with the overall goal of equitably engaging potential future riders and those who may be impacted by construction.

Sound Transit is committed to equal engagement opportunities for all interested members of the public. In addition to Sound Transit community engagement procedures, Executive Order 12898, U.S. Department of Transportation Order 5610.2(a), and FTA Circular C 4703.1 require Sound Transit to provide meaningful opportunities for these groups to engage in the planning process. Title VI of the Civil Rights Act of 1964 prohibits discrimination based on race, color, or national origin. These directives make environmental justice a part of the decision-making process by identifying and addressing disproportionately high and adverse human health and environmental effects of Sound Transit's programs, policies, and activities on minority and low-income populations.

Ways to comment

From November 13 – December 6, the public provided comments in the following ways:

- *Online open house survey:* omfsouth.participate.online
- *Email:* omfsouth@soundtransit.org
- *Phone:* 206-398-5453
- *Drop-in sessions:* verbal feedback provided to staff in person

Source	Number of comments
Online open house	19
Email and phone	0

Outcomes and next steps

Sound Transit compiled a summary of all comments received from the public during the November outreach period. Sound Transit will consider this feedback as the team continues evaluating the site alternatives to be studied in the Draft EIS. Potential site alternatives advanced by the Sound Transit Board will be studied in a Draft EIS. After collecting and considering public input on the Draft EIS, the Sound Transit Board will identify a preferred alternative for evaluation in a Final EIS. The Final EIS will also respond to comments on the Draft EIS and is scheduled to be published in 2021. After the Final EIS is issued, the Board will select the project to be built. Final design, property acquisition, and construction will take place from 2019 to 2026 with full-site operations beginning in 2026.

Appendix A: Online Open House

THIS PAGE IS INTENTIONALLY LEFT BLANK



Operations and Maintenance Facility South

Welcome

Sound Transit is studying three potential sites in environmental review for the Operations and Maintenance Facility (OMF) South.

Sound Transit is designing, analyzing and studying the three site alternatives – the [Midway Landfill](#), [South 336th Street](#) and [South 344th Street](#) – for a Draft Environmental Impact Statement (EIS).

We will continue to study these alternatives as we work to balance the design of a facility that will efficiently operate a 100-plus mile rail system, while minimizing impacts to the surrounding communities and environments.

Previous public feedback informed the latest site alternatives; today you can see a project status update and what to expect as we move forward.

- After considering public input following the scoping period in early 2019, the Sound Transit Board narrowed [potential sites from six to three](#) for the new Operations and Maintenance Facility (OMF) South. This decision was based on technical feedback, agency and city feedback, and thousands of public comments.

Keep reading for updates on the environmental review process ahead.

- Sound Transit is studying the three site alternatives in a Draft EIS, expected in late-2020.
- Information about each of the site alternatives will be available in the Draft EIS, which documents the benefits and impacts to the natural and built environment for each site alternative and proposes ways to mitigate unavoidable impacts.
- Following public comment on the Draft EIS, the Sound Transit Board (Board) is scheduled to identify one preferred alternative from among the three potential sites.
- The Final EIS examining the preferred alternative will be published in 2021. After its publication, the Board will make the final decision on where the OMF South will be built.



Link light rail cars receive nightly maintenance at the Seattle Operations and Maintenance Facility

What's the Operations and Maintenance Facility South?

Visit our [website](#) for background information, previous publications and analyses.

Where will Link take you in 2035?



Link light rail lines in service by 2035

What are the requirements and benefits of the OMF South?

- The OMF South will provide over 300 new, living-wage jobs maintaining the expanding light rail fleet, tracks and facilities.
 - Capacity to securely store and maintain 144 light rail vehicles.
 - Space for light rail vehicle storage tracks as well as buildings, employee parking, storage areas, internal roads, landscaping, fencing, setbacks, stormwater facilities, electric transmission lines, and other utilities.
 - A 100,000-square-foot building for light rail vehicle maintenance, repair, cleaning, painting, spare parts storage, operations and administration.
 - Area for maintenance and storage of spare parts for tracks, vehicle propulsion equipment, train signals and other infrastructure, and a 28,000-square-foot warehouse.
 - Connecting tracks to [Federal Way Link Extension](#) (opens 2024), although length and location of the connecting tracks varies by site alternative.
 - The ability for light rail vehicles to travel back to the facility nightly during the "nightly maintenance window," a maintenance time for track inspection and other support services when the system is shut down.
 - Superficial and subsurface site characteristics that allow for maintained light rail system efficiency. Existing topography, excavation or ground improvements that will allow for maintained reliability and efficiency of the Sound Transit light rail system.
-

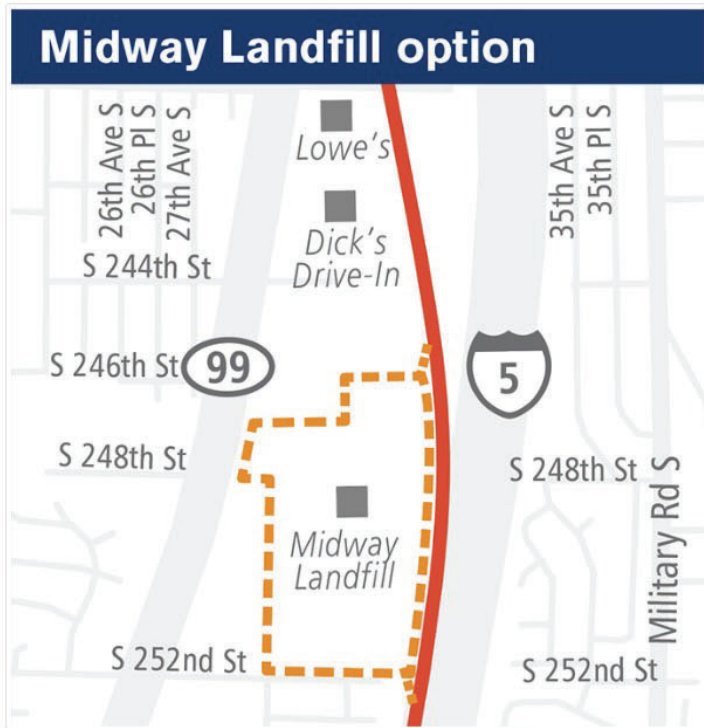
Site alternatives

The Draft EIS will study three site alternatives

The three site alternatives for the Operations and Maintenance Facility (OMF) South are the Midway Landfill in Kent, South 336th Street and South 344th Street in Federal Way.

This facility will maintain light rail cars for the Federal Way and Tacoma Dome Link Extensions and keep them in service.

Features of the Midway Landfill site alternative



From Spring/Summer 2019: Site map of the Midway Landfill alternative under study in the EIS. Site configurations and size are not final and are subject to refinements.

- Located on the former Midway Landfill, this Kent site alternative is south of South 246th Street and west of I-5.
- This site would be connected directly to the [Federal Way Link Extension](#) with 0.3 to 1 mile of tail track.
- We consider all potential OMF sites based on their feasibility to serve the entire light rail network. Due to its unique history, evaluating potential long-term use of the landfill site involves additional considerations. We are evaluating:
 - Potential for land settlement.
 - Safety considerations as a former Superfund site.
 - Regulatory and permitting requirements.
 - Potential impacts to the construction schedule.
- We are collaborating and engaging with the following agencies to evaluate this feasibility:
 - City of Seattle/Seattle Public Utilities (landowner).
 - City of Kent.
 - City of Federal Way.
 - The Environmental Protection Agency.
 - Washington State Department of Ecology.
 - Washington State Department of Transportation.



A map of the three OMF South site alternatives to be studied in the Draft EIS.



From Spring/Summer 2019: A site map of the South 336th St alternative under study in the EIS. Site configurations and size are not final and are subject to refinements.

- This Federal Way site alternative is west of I-5 and south of S 336th Street.
- This site would be connected to the [Federal Way Link Extension](#) with 1 mile of tracks.
- The tracks would also serve as a guideway to the [Tacoma Dome Link Extension](#).



From Spring/Summer 2019: A site map of the South 344th St alternative under study in the EIS. Site configurations and size are not final and are subject to refinements.

- This Federal Way site alternative is west of I-5 and north of South 344th Street.
- The South 344th Street alternative would include 1.3 miles of track connecting to the [Federal Way Link Extension](#). Tracks along I-5 are part of the preferred alternative for the [South Federal Way segment](#) of the [Tacoma Dome Link Extension](#).

Questions? Come talk with us! -

The OMF South team will be at the Federal Way Link Extension Open Houses (FWLE) and additional OMF South-focused drop-in sessions. Drop by any time.

Highline College

November 13, 6 – 8 p.m.

[2400 S 240th St](#)

[Des Moines, WA 98198](#)

[Add to Calendar](#)

Federal Way Performing Arts Center

November 20, 6 – 8 p.m.

[31510 Pete von Reichbauer Way S](#)

[Federal Way, WA 98003](#)

[Add to Calendar](#)

Federal Way Library

November 16, 10 a.m. – 12 p.m.

[34200 1st Way S](#)

[Federal Way, WA 98003](#)

[Add to Calendar](#)

Federal Way Community Center

December 4, 5 – 7 p.m.

[876 S 333rd St](#)

[Federal Way, WA 98003](#)

[Add to Calendar](#)

Fred Meyer

November 19, 8 a.m. – 10 a.m.

[25250 Pacific Hwy S](#)

[Kent, WA 98032](#)

[Add to Calendar](#)

Sites not selected for study

The Board eliminated three sites after the Spring 2019 scoping period

The Sound Transit Board eliminated three sites from further study in the Draft EIS following the public comment and scoping period.

These sites will not be included in the Draft EIS as potential sites for OMF South:

- South 240th Street and SR-99 site in Kent.
- Midway Landfill and SR-99 site in Federal Way.
- South 316th Street and Military Road in Federal Way.

Here is some [background](#) on all the sites that were considered.



Map from February 2019: The six initial sites for the OMF South outlined. Sites not selected for further study are shaded.

Next steps and resources

What's next?

Thank you for your continued engagement with the Operations and Maintenance Facility (OMF) South Project.

As we are conducting environmental review, we want to keep communities along the project corridor up to date with the most recent information.

Following release of the Draft Environmental Impact Statement (EIS), the formal public review and comment period for the document will begin. After considering public feedback, the Sound Transit Board will identify a preferred site alternative. The Final EIS will be drafted in 2021. In 2021, after the Final EIS is issued, the Board will select the project to construct.



Equity and inclusion

Sound Transit is committed to inclusively engaging those who live and work along the project corridor, including historically-underrepresented communities. If you are part of these communities, we want your participation in understanding and identifying our project's potential benefits and effects on your community. Get involved by signing up for project updates or requesting a briefing for your community.

Stay updated with project news and opportunities to get involved.

Email Address

Email

Subscribe now

Fieldwork in your neighborhood



Have questions or thoughts? -

The Midway Landfill, South 336th Street, and South 344th Street site alternatives will be studied equally in the Draft EIS. Following public comment on the Draft EIS in 2020, the Sound Transit Board is scheduled to identify a preferred alternative from among the three sites. Do you have any thoughts or questions about these alternatives at this time? *

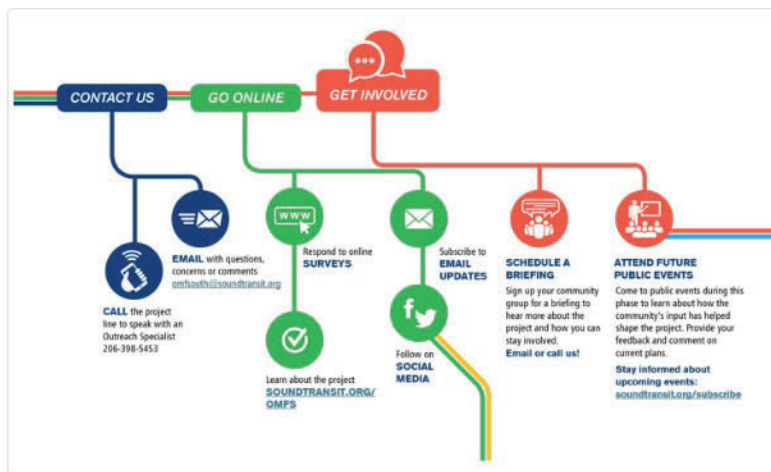
- Midway Landfill
- South 336th St
- South 344th St
- All sites/Entire project area

Comments *

Do you have any suggestions for how we can improve our public engagement?

Submit

How to stay engaged



Ways to stay engaged with the OMF South project moving forward

- Email us at OMFsouth@soundtransit.org.
- Call us at [206-398-5453](tel:206-398-5453).
- Request a briefing for your community.

Other resources

- [Project website documents library](#)
 - [Real estate materials](#)
 - [Past outreach summaries](#)
 - What is an [Environmental Impact Statement](#)?
 - The City of South Federal is also thinking ahead about the future of the South Federal Way area and currently seeking feedback. [Visit their site to learn more about Framing City South.](#)
-

Contact

Sound Transit Community Outreach
Phone: [206-398-5453](tel:206-398-5453)
Email: OMFSouth@soundtransit.org
Web: soundtransit.org/omfs

Protected by **reCAPTCHA**
[Privacy](#) - [Terms](#)



Follow us



Share this online open house



Appendix B: Email Notifications

The following email was sent to the Sound Transit subscription list on November 12 to announce the outreach period.



What is OMF South?

November 12, 2019

Sound Transit's new Operations and Maintenance Facility (OMF) in South King County will be essential for the Link light rail expansion Puget Sound voters approved in 2016. We need this facility to store and service our growing fleet of clean, quiet, efficient electric trains as regional light rail expands from Seattle to Tacoma.

Because safety is Sound Transit's top priority, we suspend service every night between 1-5 a.m. so staff can clean trains and inspect light rail tracks. That means an OMF operates 24 hours a day, 365 days a year. Sound Transit currently operates a central light rail operations and maintenance facility (OMF) in Seattle, and we're building another in Bellevue. We'll also build a fourth facility north of Seattle.

The OMF South will create more than 300 living-wage jobs when it opens in 2026.

[Learn more](#)

What's new on OMF South?

We held an open comment period in the spring of 2019. Since then we've continued to refine our site options based on feedback from the public, partner agencies and local stakeholders, and direction from the Sound Transit Board of Directors.

Now we're studying potential environmental impacts for three possible sites—one in Kent and two in Federal Way—and we'll publish the findings in a Draft Environmental Impact Statement in late 2020. We'll seek more public feedback at that time.

[See the potential locations](#)

Appendix B: Email Notifications (continued)

Sound Transit sent the following emails on November 26 and December 3 to advertise OMF South project drop-in sessions.



Remember, OMF South drop-in sessions continue next week!

November 26, 2019

Come learn about site locations for the Operations and Maintenance Facility (OMF) South. Attend an informational drop-in session or check out our online version of the drop-in sessions to stay informed and view the latest site locations.

- **Wednesday, December 4, 5 – 7 p.m. // Federal Way Community Center:** 876 S 333rd St, Federal Way

[See the potential locations](#)

Opportunities to stay informed and learn about project progress

December 3, 2019

Thanks to everyone who attended our informational drop-in sessions for the Operations and Maintenance Facility (OMF) South in November. There is still time to learn more about our project's progress since the public scoping period via our online version of drop-in sessions. You can also attend the informational drop-in session to learn more about site locations.

- **Wednesday, December 4, 5 – 7 p.m. // Federal Way Community Center:** 876 S 333rd St, Federal Way
- **Visit our online version of drop-in sessions:** omfs.participate.online
- **Email:** omfsouth@soundtransit.org
- **Phone:** 206-398-5453

Appendix C: Press Release and Earned Media

Sound Transit issued one press release during the November outreach period.

Sound Transit holding drop-in sessions on Tacoma Dome Link Extension and OMF South *Public invited to learn about project updates and environmental process*

November 7, 2019

Sound Transit is engaging South Sound communities on light rail projects coming to the region. There will be opportunities for the public to learn more about the Tacoma Dome Link Extension (TDLE) and Operations and Maintenance Facility South (OMF South) through drop-in sessions in November and December.

Sound Transit will hold drop-in sessions at the following locations:

- Saturday, Nov. 16, Federal Way Library, 10 a.m.-noon.
- Saturday, Nov. 16, Eastside Community Center, Tacoma, 10 a.m.-noon.
- Tuesday, Nov. 19, Fred Meyer, Kent, 8-10 a.m.
- Wednesday Nov. 20, Starbucks, Milton, 8-10 a.m.
- Wednesday Nov. 20, Evergreen State College, Tacoma, 5-7 p.m.
- Thursday Nov. 21, Poodle Dog, Fife, 10 a.m.-noon.
- Tuesday, Dec. 3, UW Tacoma Campus, 10 a.m.-noon.
- Tuesday, Dec. 3, Fife Pierce County Library, 4-6 p.m.
- Wednesday, Dec. 4, Tacoma Sounder Station, 6-8 a.m.
- Wednesday, Dec. 4, Federal Way Community Center, 5-7 p.m.

For those unable to attend a drop-in session, information on both projects will also be available online from Nov. 13 to Dec. 6 at southsoundlink.participate.online.

This spring the Sound Transit Board of Directors selected routes and station locations for environmental study to expand regional light rail with the Tacoma Dome Link extension. The Board also selected three sites for environmental study to locate a new Operations and Maintenance Facility in South King County.

Staff from the Tacoma Dome Link Extension and OMF South projects will also be attending two open houses for the Federal Way Link Extension.

- Wednesday, Nov. 13, Highline College, Des Moines, 6-8 p.m.
- Wednesday, Nov. 20, Federal Way Performing Arts Center, 6-8 p.m.

Sign up for Tacoma Dome Link project updates at www.soundtransit.org/tdlink. Sign up for OMF South project updates at www.soundtransit.org/omfs.

Earned Media

Articles regarding the November outreach period were featured in the following publications:

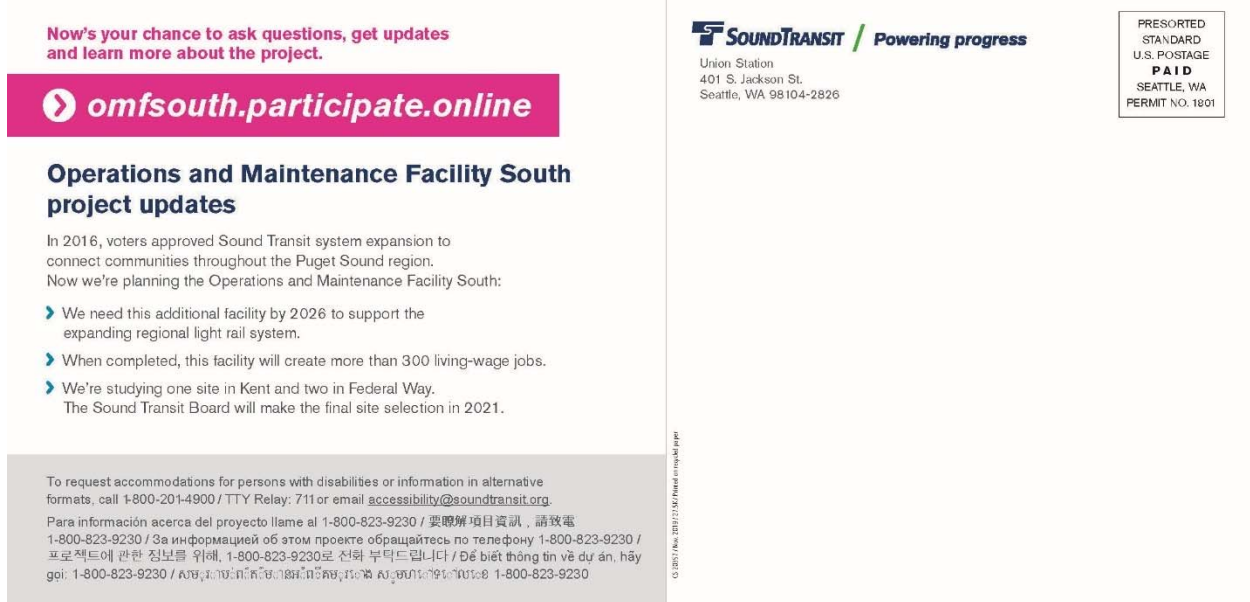
Publication	Article Title	Date
Tacoma Daily Index	Sound Transit holding drop-in sessions on Tacoma Dome Link Extension and OMF South	11/8/19
Kent Reporter	Sound Transit plans meetings about light rail maintenance facility	11/11/19
Komo News	Some Sound Transit projects safe, others questionable under \$30 tabs	11/8/19

Appendix D: Postcard and Poster

The image below shows the front of the OMF South postcard mailed to residents along the corridor.



The image below shows the back of the OMF South postcard.



The image below shows the front of the joint TDLE/ OMF postcard mailed to residents along the corridor.

The image below shows the back of the joint TDLE/ OMF postcard.

Appendix D: Postcard and Poster (continued)

The posters below were hung at retail and commercial centers along corridor.

Operations and Maintenance Facility South



Supporting a growing light rail system

Learn about project status
▶ omfsouth.participate.online

Attend a drop-in session

Highline College
Wednesday, Nov. 13 // 6–8 p.m.
2400 S 240th St., Building 8, Des Moines

Fred Meyer
Tuesday, Nov. 19 // 8–10 a.m.
25250 Pacific Hwy S

Can't attend in-person?
Go online: omfsouth.participate.online



SOUNDTRANSIT / Powering progress

In 2016, voters approved Sound Transit system expansion to connect communities throughout the Puget Sound region. Now we're planning the Operations and Maintenance Facility South:

- ▶ We need this additional maintenance facility by 2026 to expand the light rail system.
- ▶ When completed, this facility will create more than 300 living-wage jobs.
- ▶ We're studying one site in Kent and two in Federal Way. The Sound Transit Board will make the final site selection in 2021.

Questions?

Contact the Community Outreach team
Email: omfsouth@soundtransit.org
Phone: (206) 398-5453

For more information about Sound Transit projects or services, visit soundtransit.org.

To request accommodations for persons with disabilities or information in alternative formats, call 1-800-201-4900 / TTY Relay: 711 or email accessibility@soundtransit.org
Para información acerca del proyecto llame al 1-800-823-9230 / 臺灣轉接中心 電話: 1-800-823-9230 / За информацией об этом проекте обращайтесь по телефону 1-800-823-9230 / # 고객센터에 민원 정보를 위해, 1-800-823-9230로 전화 부탁드립니다 / Để biết thông tin về dự án, hãy gọi: 1-800-823-9230 / 1-800-823-9230로 전화하십시오

**Operations and Maintenance Facility South
Tacoma Dome Link Extension**



More regional light rail projects are coming to South King County

Learn about the status of both projects
➤ southsoundlink.participate.online

Attend a drop-in session

Highline College

Wednesday, Nov. 13 // 6-8 p.m.
2400 S 240th St, Building 8, Des Moines

Federal Way Library

Saturday, Nov. 16 // 10 a.m. – 12 p.m.
34200 1st Way S, Federal Way

Federal Way Performing Arts Center

Wednesday, Nov. 20 // 6-8 p.m.
31510 Pete Von Reichbauer Way S, Federal Way

Federal Way Community Center

Wednesday, Dec. 4 // 5-7 p.m.
876 S 333rd St, Federal Way



In 2016, voters approved Sound Transit system expansion to connect communities throughout the Puget Sound region. Now we're planning two projects in your area:

- Operations and Maintenance Facility South
- Tacoma Dome Link Extension

Questions?

Contact the Community Outreach team

Email: [OMFS: omfsouth@soundtransit.org](mailto:omfsouth@soundtransit.org) // [TDLE: tdle@soundtransit.org](mailto:tdle@soundtransit.org)

For more information about Sound Transit projects or services, visit soundtransit.org.

To request accommodations for persons with disabilities or information in alternative formats, call 1-800-201-4900 / TTY Relay: 711 or email accessibility@soundtransit.org
Para información acerca del proyecto llame al 1-800-823-9230 / 要瞭解項目資訊，請致電 1-800-823-9230 / За информацией об этом проекте обращайтесь по телефону 1-800-823-9230 / 프로젝트에 관한 정보를 위해, 1-800-823-9230로 문의 부탁드립니다 / Để biết thông tin về dự án, hãy gọi: 1-800-823-9230 / අදාළ තොරතුරු සඳහා 1-800-823-9230

Appendix D: Postcard and Poster (continued)

Below are the locations of the large-scale poster distribution efforts at 105 retail locations.

Business Name	Address	City	State
The Pancake Chef	15215 Military Rd S	SeaTac	WA
Sunset International Furniture	15205 Military Rd S	SeaTac	WA
Shuruba	15205 Military Rd S	SeaTac	WA
Mana Market	15205 Military Rd S	SeaTac	WA
Star Coffee	16005 International Blvd	SeaTac	WA
E-Z Check Cash	19019 International Blvd	SeaTac	WA
Auto Sport Imports	19611 International Blvd	SeaTac	WA
All Star Grocery & Video	2825 S 200th St	SeaTac	WA
The Market at La Plaza	23311 Pacific Hwy S	Kent	WA
Konich's Teriyaki	23217 Pacific Hwy S	Kent	WA
Tool Town	23639 Pacific Hwy S	Des Moines	WA
Midway Tropical Fish & Pets	24101 Pacific Hwy S	Des Moines	WA
El Mercado Latino	24811 Pacific Hwy S	Kent	WA
Robin Hood Pizza	24823 Pacific Hwy S	Kent	WA
Estafeta	26218 Pacific Hwy S	Kent	WA
Pasteleria Y Panaderia La Ideal	26218 Pacific Hwy S	Kent	WA
Rite Aid	26200 Pacific Hwy S	Kent	WA
Mariscos Culiacan	26218 Pacific Hwy S	Kent	WA
D C Laundry	26030 Pacific Hwy S	Kent	WA
El Salvador	26026 Pacific Hwy S	Kent	WA
La Malinche	26028 Pacific Hwy S	Kent	WA
Pho Saigon Garden	25632 Pacific Hwy S	Kent	WA
Fancy Nails	25630 Pacific Hwy S	Kent	WA
La Central Tienda Mexicana Y Taqueria	25626 Pacific Hwy S	Kent	WA
Stimpy's	25608 Pacific Hwy S	Kent	WA
Cutters Point Coffee	25246 Pacific Hwy S	Kent	WA
Fred Meyer	25250 Pacific Hwy S	Kent	WA
Laundromat	27221 Pacific Hwy S	Federal Way	WA
Starbucks	24130 WA-99	Kent	WA
Goatea Kent	24130 Pacific Hwy S	Kent	WA
Bucky's	23928 Pacific Hwy S	Kent	WA
Vern Fonk Insurance	23830 Pacific Hwy S	Kent	WA
Omni Executive Center	23830 Pacific Hwy S	Kent	WA
J J's Bar & Grill	23826 Pacific Hwy S	Kent	WA
Outreach Center	23835 Pacific Hwy S	Kent	WA
Outreach Center 2nd Floor	23835 Pacific Hwy S	Kent	WA
Student Service Center	2400 S 240th St	Des Moines	WA
Highline Student Union	2400 S 240th St	Des Moines	WA
Union Cafe	2400 S 240th St	Des Moines	WA
Highline Student Union 1st Floor	2400 S 240th St	Des Moines	WA

Highline Bookstore	2400 S 240th St	Des Moines	WA
California Burrito	22660 Pacific Hwy S	Des Moines	WA
Jupiter Reading Room	2400 S 240th St	Des Moines	WA
Student Programs	2400 S 240th St	Des Moines	WA
Lecture Hall	2400 S 240th St	Des Moines	WA
Building 3	2400 S 240th St	Des Moines	WA
Highline Student Union 3rd Floor	2400 S 240th St	Des Moines	WA
Highline Library	2400 S 240th St	Des Moines	WA
Highline Library Entrance 2	2400 S 240th St	Des Moines	WA
Woodmont Library	26809 Pacific Hwy S	Des Moines	WA
C&H LAUNDROMAT	27040 Pacific Hwy S	Federal Way	WA
Snow White Laundry	23250 Pacific Hwy S	Federal Way	WA
Starbucks	1656 SW Dash Point Rd	Federal Way	WA
Dash Point Laundry	1642 SW Dash Point Rd	Federal Way	WA
Campeón Market	31009 Pacific Hwy S	Federal Way	WA
Campeón Market Food Court	31009 Pacific Hwy S	Federal Way	WA
COSTA CHICA LLC	31007 Pacific Hwy S STE A	Federal Way	WA
B.I.G Wholesale	30919 Pacific Hwy S	Federal Way	WA
L&L Hawaiian Barbecue	32225 Pacific Hwy S	Federal Way	WA
Sk Butcher Shop	33324 Pacific Hwy S	Federal Way	WA
7 Billiards	33324 Pacific Hwy S	Federal Way	WA
Seoul	33310 Pacific Hwy S	Federal Way	WA
Sun Printing Co	33304 Pacific Hwy S	Federal Way	WA
CAFE NOIR	33304 Pacific Hwy	Federal Way	WA
Yummy Banchan	33320 Pacific Hwy S	Federal Way	WA
Señor Taco	33120 Pacific Hwy S	Federal Way	WA
Sun Billiards	33324 Pacific Hwy S	Federal Way	WA
Nutri Fruti	1500 S 336th St	Federal Way	WA
B&R Espresso Bar	32901 1st Ave S	Federal Way	WA
Puerto Vallarta	2002 SW Campus Dr	Federal Way	WA
Pro Cleaners II	2142 SW 336th St	Federal Way	WA
Basil Thai	2318 SW 336th St	Federal Way	WA
Taqueria Y Pupuseria La Herradura	2322 SW 336th St	Federal Way	WA
Grease Monkey	33505 21st Ave SW	Federal Way	WA
Emerald City Smoothie	2150 SW 336th St	Federal Way	WA
Big Island Poke	2128 SW 336th St	Federal Way	WA
Starbucks	34024 Hoyt Rd SW	Federal Way	WA
Northshore Thai Cuisine	34024 Hoyt Rd SW F	Federal Way	WA
QFC	4101 49th Ave NE	Federal Way	WA
Bel Image Nails	2335 SW 336th St	Federal Way	WA
Fred Meyer	33702 21st Ave SW	Federal Way	WA
Starbucks	35009 S 348th St	Federal Way	WA
Jimmy John's	31889 Gateway Center Blvd S	Federal Way	WA
MOD Pizza	2104 S 320th St	Federal Way	WA

Panera Bread	2107 S 320th St	Federal Way	WA
Starbucks	2032 S 320th St	Federal Way	WA
California Burrito Taco Shop	31646 Pacific Hwy S	Federal Way	WA
Kum Kang San BBQ Grill Buffet	31656 Pacific Hwy S	Federal Way	WA
Ox Pho & Grill	31406 Pacific Hwy S	Federal Way	WA
Sea Mar Federal Way Medical Clinic	31405 18th Ave S	Federal Way	WA
I Love Ramen	31254 Pacific Hwy S	Federal Way	WA
Sun & Moon Cafe	31248 Pacific Hwy S	Federal Way	WA
Taquería La Tentación	31248 Pacific Hwy S	Federal Way	WA
Akasaka	31246 Pacific Hwy S	Federal Way	WA
Menchie's	1409 S 348th St	Federal Way	WA
QDOBA	1301 S 320th St	Federal Way	WA
Federal Way 320th Library	848 S 320th St	Federal Way	WA
Federal Way Library	34200 1st Way S	Federal Way	WA
Starbucks	164 SW Campus Dr	Federal Way	WA
United States Postal Service - Twin Lakes	1815 SW Campus Dr	Federal Way	WA
Asensio Coffee	33610 21st Ave SW	Federal Way	WA
Hak San Teriyaki	1913 SW Campus Dr	Federal Way	WA
Lighthouse Laundry	1905 SW Campus Dr	Federal Way	WA
Starbucks	1401 S 348th St	Federal Way	WA
Secoma Lanes	34500 Pacific Hwy S	Federal Way	WA

Appendix E: Online and Print Display Ads

The table below is a list of display advertisements published during the November outreach period.

Publication	Format	Ad type	Ad size (print)	Ad size (online)
Federal Way Mirror	Print and online	Joint	4.8333" x 6"	970x90, 300x250, 725x90, 300x50, 300x50
International Examiner	Print and online	Joint	4.87" x 6.25"	300 x 250
Kent Reporter	Print and online	OMF	4.8333" x 6"	970x90, 300x250, 725x90, 300x50, 300x50
Korea Daily	Print	Joint	10" x 7"	n/a
The Korea Times Seattle	Print and online	Joint	10.3" x 6.5"	300 x 250
Northwest Vietnamese	Print and online	Joint	4.8" x 6.25"	300 x 250
Seattle Times	Online	TDLE, OMF, and Joint	n/a	970 x 250, 300 x 600, 300 x 250, 320 x 50, 728 x 90
Tu Decides	Print and online	Joint	4.75" x 5.325"	350 x 350



 **Supporting a growing regional light rail system**
Link Operations and Maintenance Facility South

SOUNDTRANSIT / Powering progress

[See the latest](#)



 **Supporting a growing regional light rail system**
Link Operations and Maintenance Facility South

Learn about project status
omfsouth.participate.online

Attend a drop-in session

Highline College
Wednesday, Nov. 13 // 6-8 p.m.
2400 S 240th St., Building 8, Des Moines

Fred Meyer
Tuesday, Nov. 19, 9-10 a.m.
25250 Pacific Highway S, Kent

Questions?
Contact the Community Outreach team:
OMFS: (206) 398-5453
omfsouth@soundtransit.org

SOUNDTRANSIT / Powering progress



 **Supporting a growing regional light rail system**
Link Operations and Maintenance Facility South

[See the latest](#)

SOUNDTRANSIT
Powering progress

Appendix E: Online and Print Display Ads (continued)

The images below are examples of online and print advertisements that ran during the November outreach period.

인근 지역 경전철 프로젝트의 다음단계
타코마(Tacoma) 등지에 대한 서비스 계획

▶ 두 프로젝트 현황에 대해 알아보기
southsoundlink.participate.online

드롭인 세션 참여

Federal Way Library
11월 16일 토요일 오전 10시 - 정오
34200 1st Way S, Federal Way

Federal Way Performing Arts Center
11월 20일 수요일 오전 6시 - 오후 8시
31510 Pete von Reichbauer Way S, Federal Way

Federal Way Community Center
12월 4일 수요일 오후 5시 - 오후 7시
34520 16th Ave. S, Federal Way

질문이 있으신가요?
커뮤니티 지원 센터에 연락하기:
(206) 398-5453
OMFS: omfsouth@soundtransit.org
TDLE: tdlink@soundtransit.org

SOUNDTRANSIT / Powering progress

Próximos pasos para proyectos de trenes ligeros cerca de usted
Servicio de planificación para Tacoma y más

Entérese de lo más reciente

SOUNDTRANSIT
Powering progress

Những bước tiếp theo của các dự án đường sắt khu vực hạng nhẹ gần địa điểm của bạn
Dịch vụ quy hoạch đến Tacoma và nhiều địa điểm khác

Xem thông tin mới nhất

SOUNDTRANSIT
Powering progress

Appendix E: Online and Print Display Ads (continued)

The following screenshots show online and print advertisements in publications.



¡Solicítela con nosotros!

El Departamento de Servicio al Cliente le ayudará a:

- Solicitar interpretaciones
- Obtener información
- Solicitar servicios
- Resolver problemas
- Poner quejas
- Hacer reclamos por daños
- Hacer sugerencias
- Dar elogios
- Hacer comentarios sobre situaciones
- Expresar opiniones
- Descargar la aplicación móvil "Find It, Fix It"

Seattle City Hall, First Floor
601 Fifth Avenue
P.O. Box 94726
Seattle, WA 98124-4726
Lunav-viernes, 8 am-5 pm.
206-494-3469 (CITY)
FAX 206-464-5529
TTY 7-1-1

Forma para solicitud en línea!
aplicación móvil "Find It, Fix It"
www.seattle.gov/customer-service-bureau

City of Seattle

Menu **The Seattle Times** Food & Drink

LOCAL BIZ/TECH SPORTS A&E FOOD THINGS TO DO HOMES OPINION | JC

Restaurant Reviews Happy Hour Cheap Eats Recipes Both

RESERVE YOUR HOLIDAY FEAST

RESERVE NOW >>

NEW SEASONS MARKET



Próximos pasos para proyectos de trenes ligeros cerca de usted

Servicio de planificación para Tacoma y más

Entérense de lo más reciente

SOUNDTRANSIT
Powering progress

Food & Drink

The Food & Drink section brings you news about the Seattle restaurant and bar scene such as openings, closings, news about chefs and advice on where to go for a great meal or happy hour in Seattle, the Eastside or Snohomish County.

Meet our staff

December 11, 2019 at 7:00 am

Hot chocolate has gone downhill over the years, but you still can find peaks of goodness



The best modern-day hot chocolate is made with bars of the real stuff melted down and mixed with lively spices.

PACIFIC NW MAGAZINE

Supporting a growing regional light rail system

Link Operations and Maintenance Facility South

See the latest

SOUNDTRANSIT / Powering progress

Memory care center slated for Wax Road



The Vineyard Park memory care center in Mountlake Terrace. COURTESY PHOTO, Vineyard Park

Vineyard Park of Covington plans to open in 2021

By DANIELLE CHASTAINE
dchastaine@soundpublishing.com

Covington residents will see construction begin on Wax Road in December when development starts on a new memory care facility slated to open in 2021.

Vineyard Park of



Seniors enjoy table-top games at Vineyard Park in Mountlake Terrace. COURTESY PHOTO, Vineyard Park.

For Your Senior Care Needs
help is here

At Comfort Keepers®, we provide in-home care that helps seniors live happy, independent lives in the comfort of their own homes.

BEST FEDERAL WAY 2019

Our Comfort Keepers® help keep minds, bodies and lives active, happy and healthy.

Comfort Keepers®
a sodexo brand

In-Home Companion Care • Personal Care
Incidental Transportation • Meal Preparation

253-945-1400
WWW.COMFORTKEEPERS.COM

An international network of independently owned & operated offices. ©2010 CK Franchising, L

Covington plans to open in just over a year, CarePartners Living Vice President of Sales and Marketing Kelley Smith said in an email to The Covington Reporter. "It will be independent living, assisted living and have a specialized dementia wing," Smith said. "Residents will have comfortable shared living spaces and private rooms available ... apartments for those seeking (independent living/

assisted living) care. There will be dining services, activities and transportation provided along with 24-hour care and nursing services." Smith sees Vineyard Park as a unique option for seniors in the Kent and Covington area since the costs won't be as high as other facilities and residents are guaranteed financial security with Vineyard Park's floating Medicaid

license. "We are also the home of the trademarked Bonded Pairs Program," Smith stated. According to Vineyard Park's website, the Bonded Pairs program allows elderly couples to live together, even if one member of the couple has dementia. This is done by creating special provisions for non-medical personal care along with daily living assistance activities.

Vineyard Park is also in Mountlake Terrace and other locations. CarePartners Living is located in Mercer Island.

According to the City of Covington's interactive development map, the new facility will be built at 17006 SE Wax Road near Covington Way Southeast.

The project will be four-stories and nearly 80,000 square feet with 89 units. It also includes a four-story memory care facility building with nine units, totaling 17,141 square feet of space.

Smith said there will be 89 units for assisted living and 60 beds in the memory care center. Site development is underway and the company plans to begin construction in December.

"We should be open for business in spring 2021 if not sooner," Smith said. "Unit updates will be added to the website as appropriate. People can contact us to be placed on a list for further information to be sent to them, and for information regarding apartment holds, etc."

Supporting a growing regional light rail system
Link Operations and Maintenance Facility South

Learn about project status
omfsouth.participate.online

Attend a drop-in session
Highline College
Wednesday, Nov. 13 // 6-8 p.m.
2400 S 240th St., Building 8, Des Moines
Fred Meyer
Tuesday, Nov. 19, 9-10 a.m.
25250 Pacific Highway S, Kent

Questions?
Contact the Community Outreach team:
OMFS: (206) 398-5453
omfsouth@soundtransit.org

SOUNDTRANSIT / Powering progress

PUBLIC NOTICES



CITY OF COVINGTON NOTICES

Request for Qualifications (RFQ) & Project Approach for the Preparation of Form-Based Codes and SEPA Infill Exemptions for Covington's Downtown Area

Notice is hereby given that the City of Covington, Washington, Department of Community Development is seeking submittal of qualifications from a multidisciplinary consultant team (which may be a single firm or a consultant team consisting of individuals and/or firms with specialized expertise) with experience and/or expertise in the preparation of form-based codes, SEPA Infill exemptions, SEPA Programmatic EIS, market analysis, and infrastructure analysis to provide an assessment of past Downtown planning efforts and existing codes and leveraging that work to help move the City forward in fulfilling its vision for the Downtown with the development of a form-based code for Covington's Downtown area in conjunction with SEPA infill exemptions for specific development types. This project will maintain and develop collaborative and respectful relationships with the Covington community and businesses, establish or confirm existing policies and priorities for coordinated development/redevelopment, and identify necessary or recommended infrastructure expansion.

Submittals must be received at Covington City Hall by 4:00 pm on Tuesday, December 17, 2019.

The full RFQ document can be found here:
<https://www.covingtonwa.gov/rfq.php>

For more information and submittal requirements, contact Ann Mueller, Senior Planner, amueller@covingtonwa.gov

Appendix F: Social Media Posts

Below are examples of Sound Transit Facebook and Twitter posts published about the November outreach period.


 **Sound Transit**
November 15 · 🌐

Light rail is coming to the South Sound! Learn more and share your thoughts about the latest plans to extend Link light rail from Angle Lake to Federal Way and all the way to Tacoma: <http://ow.ly/V0NM50xcsL5>




Light rail projects in South King County

84 43 Comments 9 Shares


 **Sound Transit** - 🚆 🚊 🚗
@SoundTransit [Follow](#) ▾

We're kicking off a series of drop-in sessions for the Tacoma Dome Link Extension (TDLE) and Operations and Maintenance Facility South (OMFS) projects starting this week! View the list of drop-in sessions and the status of both projects here: ow.ly/5R3T50xcrs7



Operations and Maintenance Facility South and Tacoma Dome Link Extension

3:00 PM · 15 Nov 2019

4 Retweets 6 Likes 

🗨️ 4 ❤️ 6