

TRANSIT PLANNING FOR THE FUTURE

August 12, 2014
Open House



TRANSIT PLANNING FOR THE FUTURE

I-90 Transit Service Integration

Welcome & Introductions

Katie Kuciemba, Sound Transit

East Link Light Rail Overview Transit Service Integration

Don Billen, Sound Transit

Marty Minkoff, King County Metro

Public Involvement

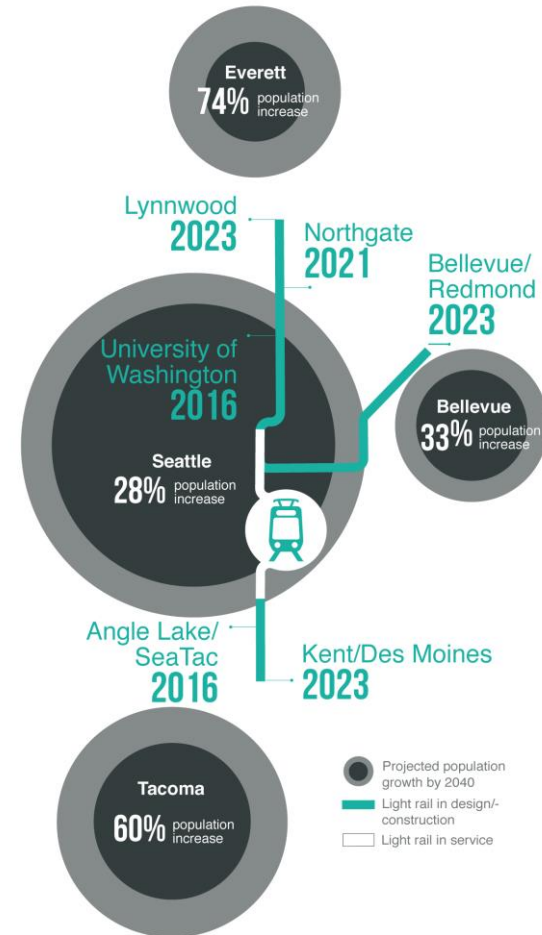
Questions and Comments

Tristan Cook, King County Metro



Connecting our growing communities

- Our region's population is forecasted to increase 30 percent by 2040
- Our current transportation network will face:
 - Increased congestion
 - Capacity constraints
 - Limited resources



East Link light rail

Length: 14 miles

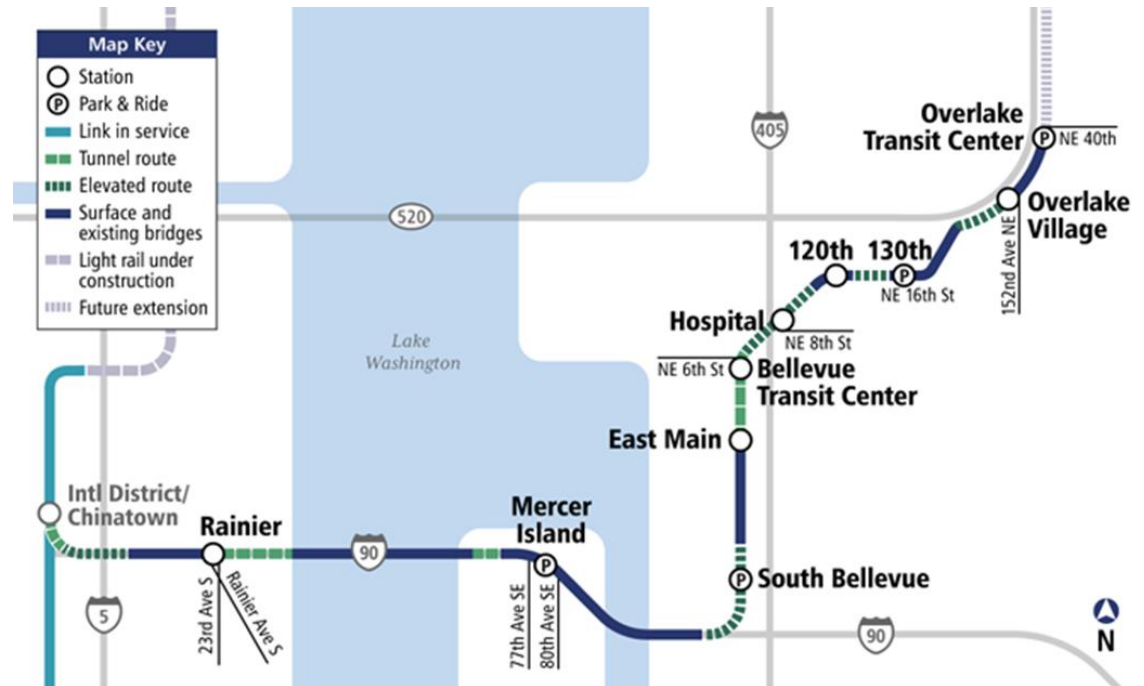
Ride times:

- Mercer Island to UW: 20 min.
- S. Bellevue to Airport: 50 min.
- Overlake Transit Center to
Bellevue Transit Center: 10 min.

Rider projection: 50,000 daily by
2030

Budget: \$2.8 billion (2010 \$)

Start of Service: Targeted 2023



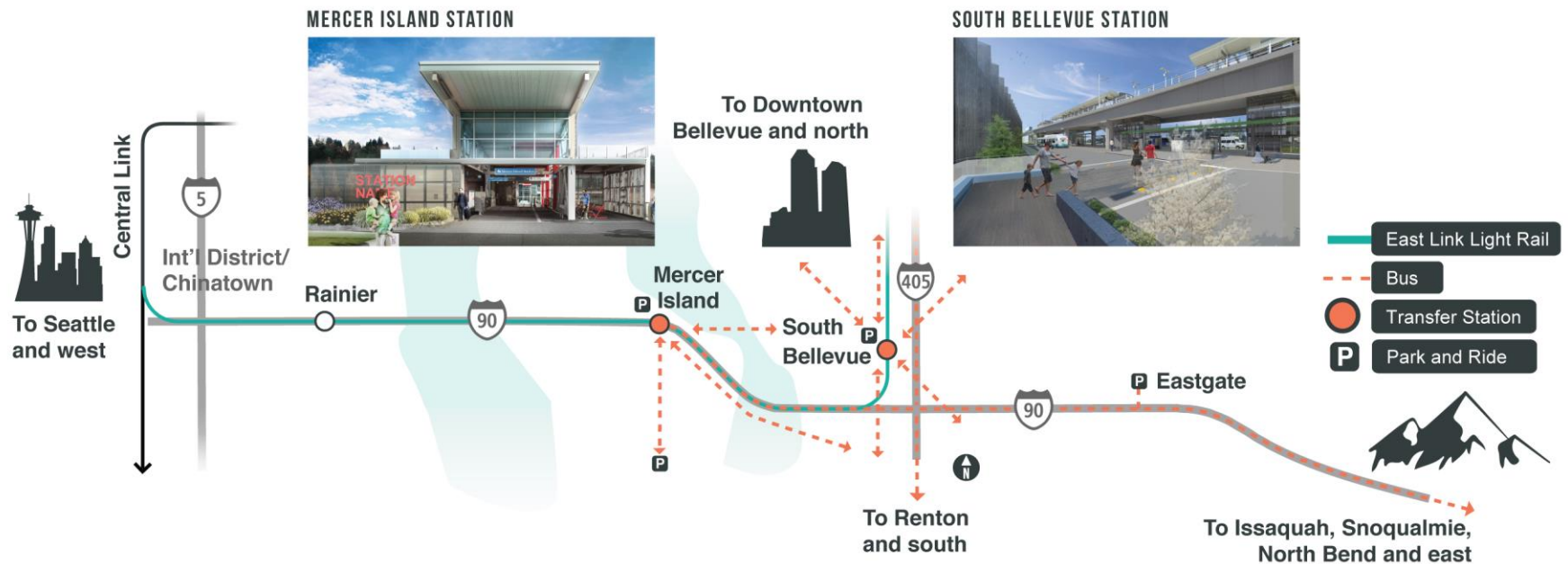
Continued partnership

Building off experience from Central Link



I-90 Transit Integration

Sound Transit and King County Metro are designing facilities at South Bellevue and Mercer Island to maximize access to congestion-free light rail service.



East Link creates opportunities to:

- Integrate bus and rail services to compliment one another
- Improve operational efficiencies
- Improve customer experience
- Reduce travel time
- Provide reliable and frequent service

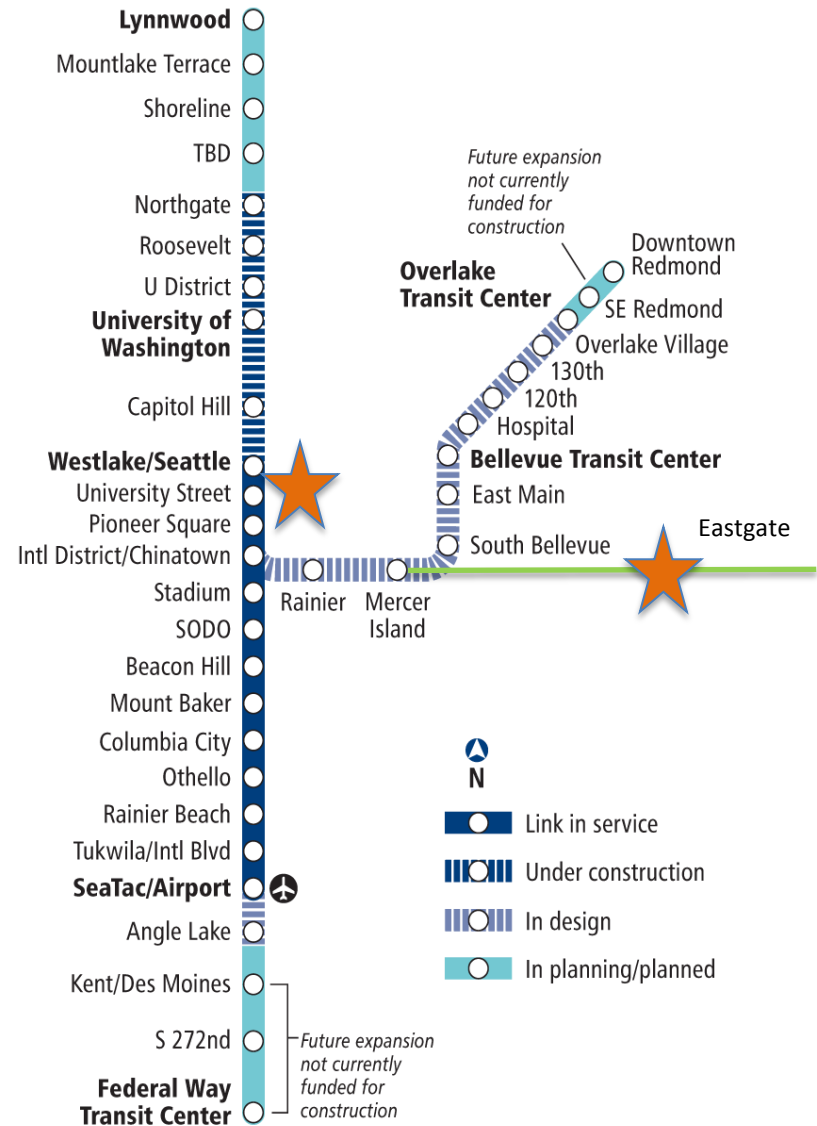
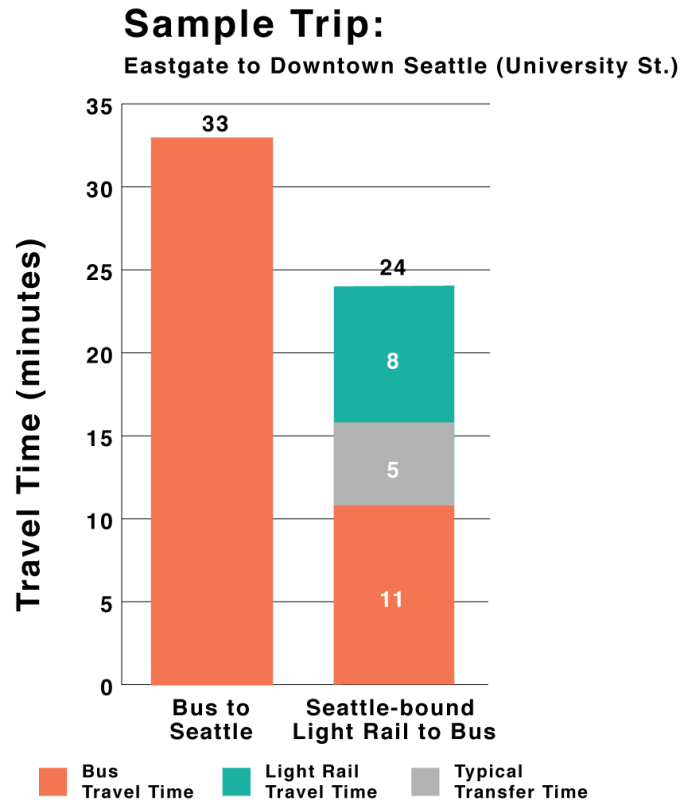


The Customer Experience

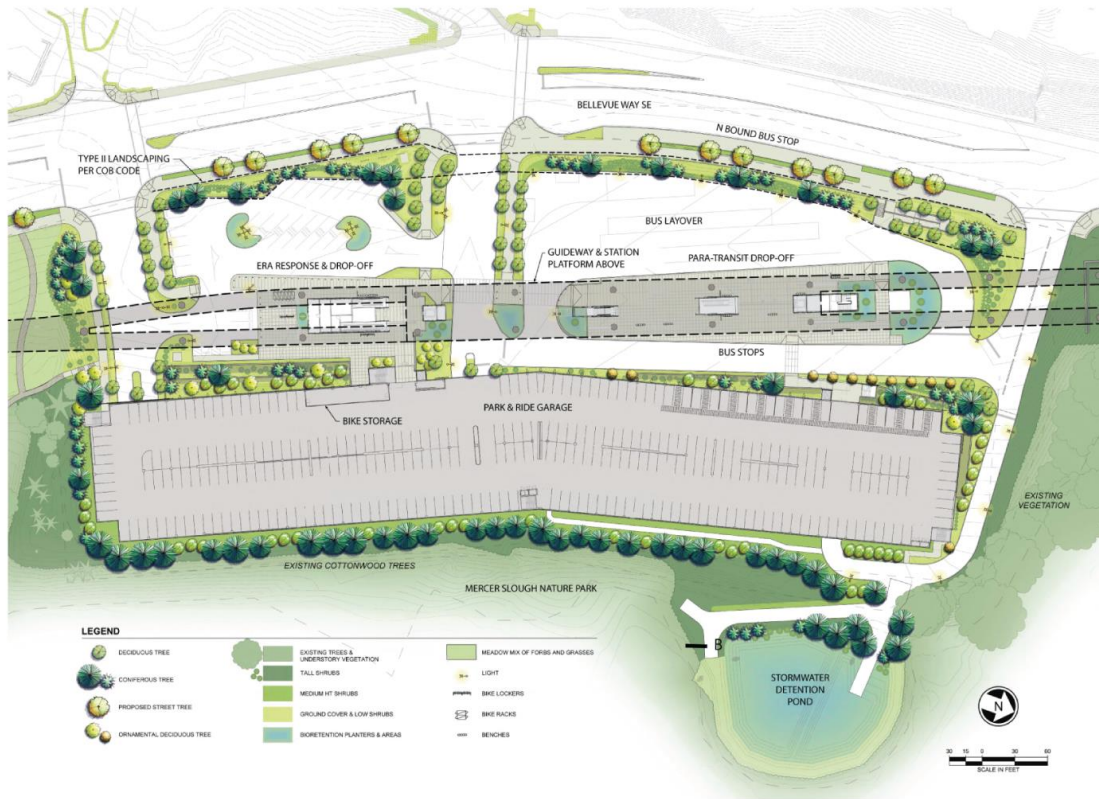
- Frequent light rail service -
Trains every 8 minutes during peak commutes
- Safe, direct, convenient and ADA accessible connections between bus and light rail
- Supportive Station Design and Amenities



Reduced travel times



South Bellevue Station



SITE PLAN



LOOKING SOUTHWEST



LOOKING EAST

Mercer Island Station



SITE PLAN

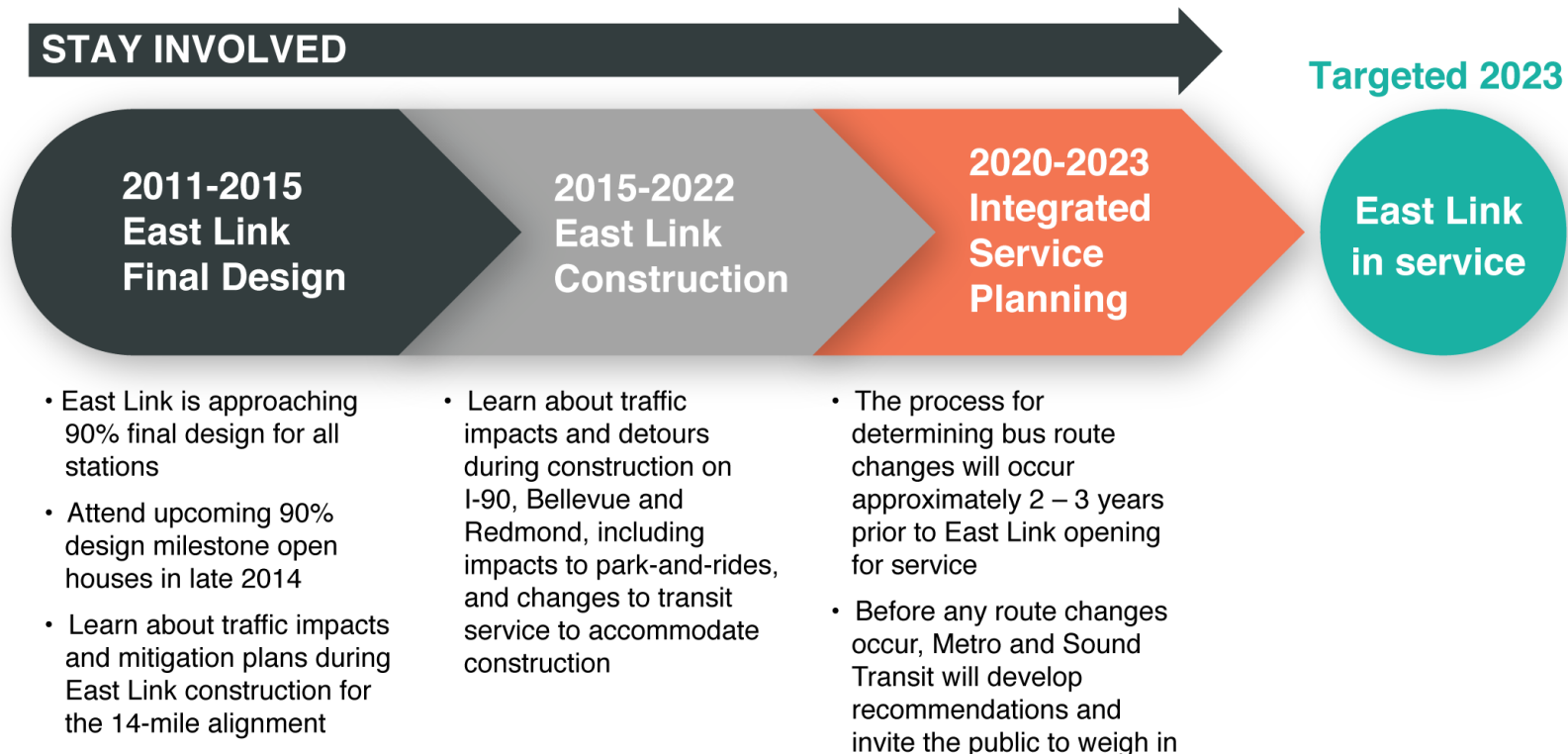


EAST ENTRY AT 80TH AVE SE



WEST ENTRY AT 77TH AVE SE

Stay Involved with Us



Questions and Comments

We want to hear from you!

King County Metro:

metro.kingcounty.gov/have-a-say/projects/eastside-transit/

Call: 206-477-3842

Sound Transit:

soundtransit.org/eastlink

Email: eastlink@soundtransit.org

Call: 206-398-LINK

