

East Link Briefing: Sound Transit Board

5/24/12



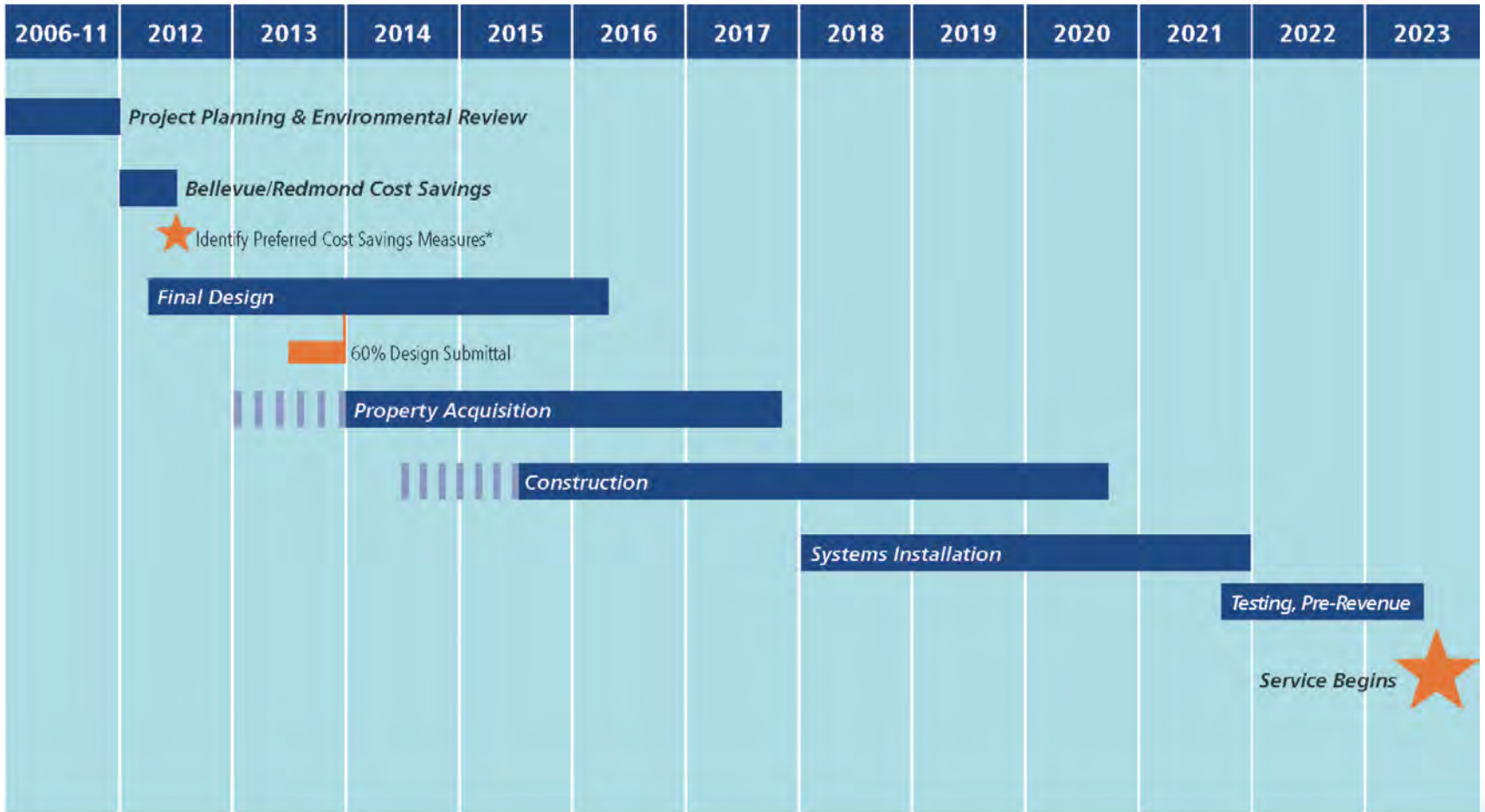


Today's Briefing

- Project schedule
- Community Outreach
- Preview of Cost-Savings Analysis Results
 - Cost information is based on limited design detail and is still under review by ST and Bellevue staff



East Link Timeline



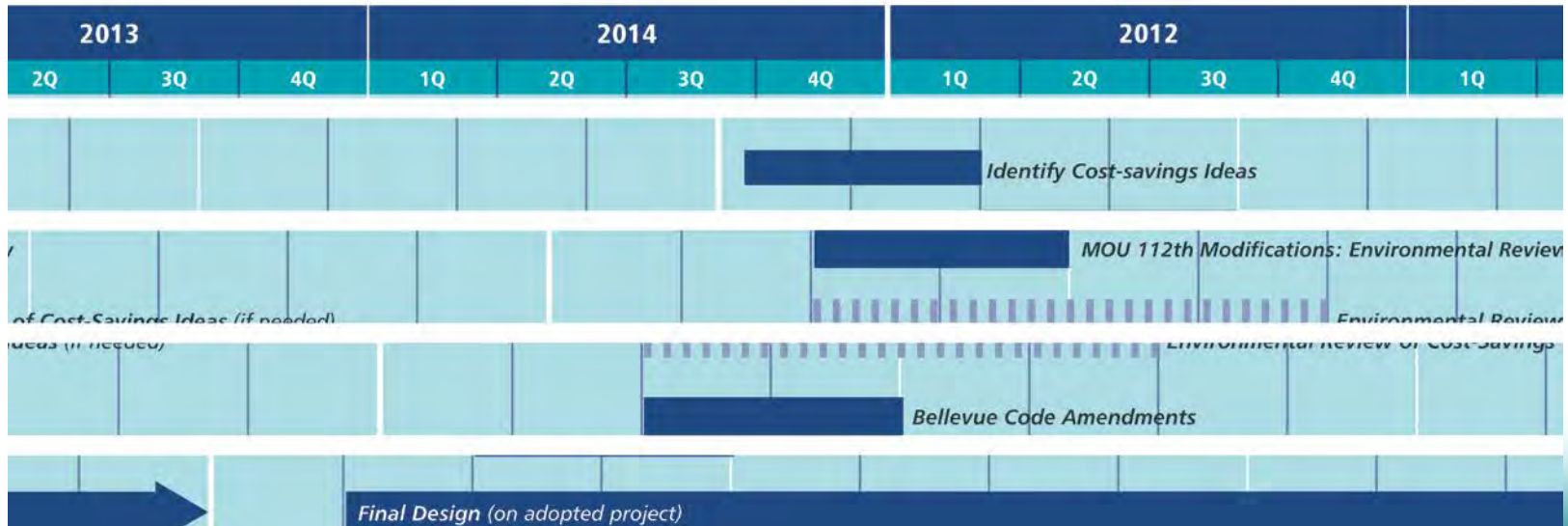
||||| Potential early work

■ Scheduled work

*Additional Environmental Review as needed



Sound Transit/ Bellevue MOU Schedule





Cost-Savings Introduction

- Following 60% design, any decrease in the estimated cost of the project, within the City, is used to reduce the City's \$60 million contingent contribution per the ST-City of Bellevue MOU
- Maintaining schedule is a key element of cost-savings and upward cost pressures still exist
- Cost-savings are an ongoing objective through duration of project and can also be achieved through efficiency in project delivery



Cost-Savings Decision Making



- **June endorsement of cost-saving ideas for further review**
 - Not a final decision
 - An indication that the ideas have sufficient merit to continue to spend resources to review

Cost-Savings Report

- Scheduled for Publication by June 5th
- Evaluation Criteria
 - Potential for cost-savings
 - Light rail operations: speed, reliability, flexibility
 - Light rail access & ridership: access to the system
 - Traffic mobility
 - Potential noise
 - Potential visual appearance
 - Other potential environmental elements: property acquisition, parks, wetlands, historic resources, vibrations
 - Potential for schedule risk



Outreach

- April 26th Open House
- Multiple Stakeholder Briefings
- June 5th Open House, Bellevue City Hall, 4pm-7pm



*Over 200 people attended
April 26 open house*

Ideas Advanced for Further Engineering Review

- **Items reducing the City's contingent contribution of \$60M estimated to have a likely value of ~\$20-24M**
 1. Tunnel design optimization
 2. Tunnel station design optimization
 3. Elevated guideway design
 4. Reduce stormwater vaults through use of low-impact development design
 5. Expedite tunnel construction through additional temporary road closures
- **Other potential savings estimated at ~\$4M**
 1. Tunnel construction staging area



Cost Savings Ideas that May Affect the MOU Project Description

NE 16th St. Road & Light Rail Alignment

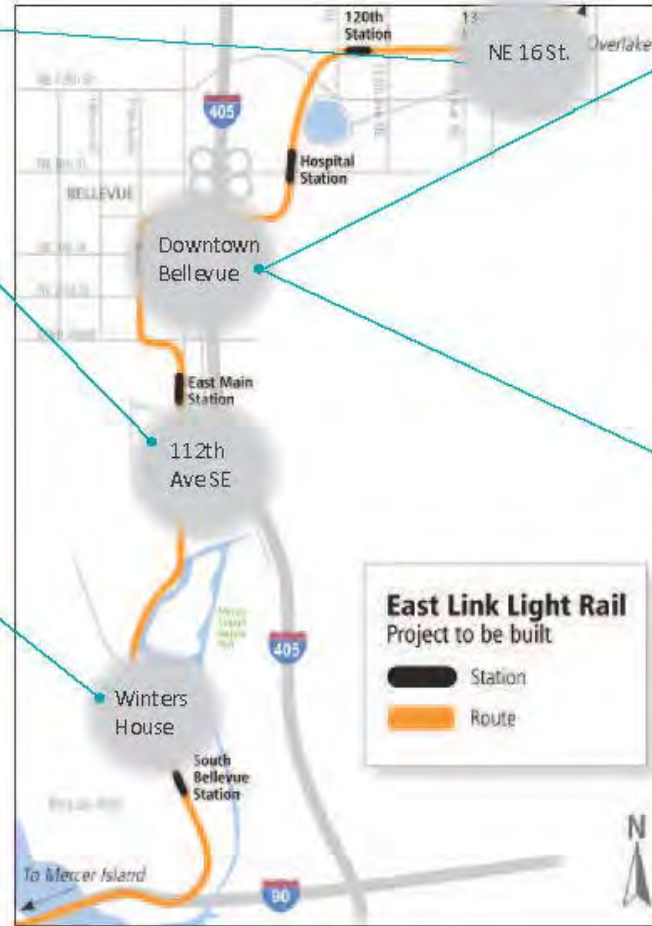
Build a two-way road on the north side of the light rail alignment

112th Ave. SE Alignment

- Replace retained cut profile with an at-grade alignment. Close SE 4th Street and extend SE 8th Street into Surrey Downs to provide neighborhood access.

Winters House

- Replace retained cut profile with an at-grade alignment by shifting Bellevue Way west, or
- Relocate Winters House.



Downtown Station Design

- Shallower station with entrance in outer lane of 110th Avenue NE.
- Stacked tunnel with entrance in outer lane of 110th Avenue NE.
- Relocate station to NE 6th Street.
- Relocate station to City Hall garage

Downtown Tunnel Design

- Replace tunnel with retained cut from Main Street to NE 2nd Street.

Adopted Project at Winters House



Bellevue Way Looking South - Adopted Project



Cost-Savings Idea: Shift Bellevue Way West



Shift Bellevue Way West Looking South: Cost-Savings Idea 1a

Cost-Savings Potential: \$5 to \$8M

Cost-Savings Idea: Relocate Winters House



Relocate Winters House Looking South: Cost-Savings Idea 1b

Cost-Savings Potential: \$3 to \$6M

MOU Alignment at 112th Ave SE & SE 8th



112th Ave SE Alignment Looking South at SE 8th – Adopted Project



MOU Alignment: Retained Cut Under SE 4th



112th Ave SE Alignment Looking North at SE 6th – Adopted project



Cost-Savings Idea: Neighborhood Access at SE 8th Instead of Retained Cut at SE 4th



112th Ave SE Alignment Looking South at SE 8th: Cost-Savings Idea 2a

Cost-Savings Idea: Neighborhood Access at SE 8th Instead of Retained Cut at SE 4th



112th Ave SE Alignment Looking North at SE 6th: Cost-Savings Idea 2a

Cost-Savings Potential: \$5 to \$9M

Adopted Downtown Station Design



Downtown Station - Adopted Project



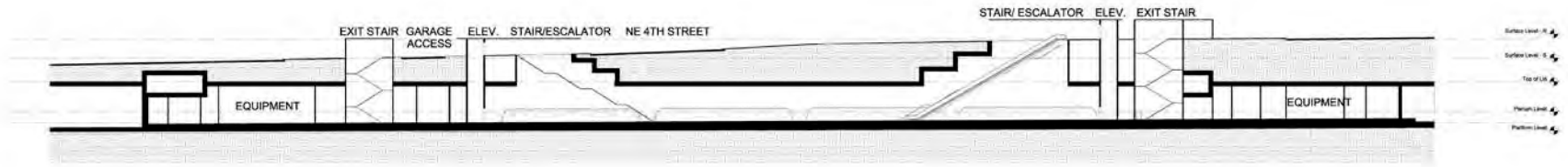
Cost-Savings Idea: Eliminate Mezzanine



Eliminate Mezzanine: Cost-Savings Idea 3a



Cost-Savings Idea: Eliminate Mezzanine



SECTION 1
SCALE IN FEET

CONCEPTUAL

COMMENTS: UNRELECTED COSTS HAVE BEEN IDENTIFIED AND ARE SUBJECT TO FURTHER REVISIONS AND COST ESTIMATION BY THE CONSULTANT.
SOUTH BELLEVUE TO OLYMPIA TRANSIT CENTER
EARLY WORK
SP-11: ELIMINATE MEZZANINE
FINAL SECTION

35.30.04
S2-02
SOUNDTRANSIT
FINAL DESIGN PARTNERS

Downtown Station: Cost-Savings Idea 3a

Cost-Savings Potential: \$4 to \$7M

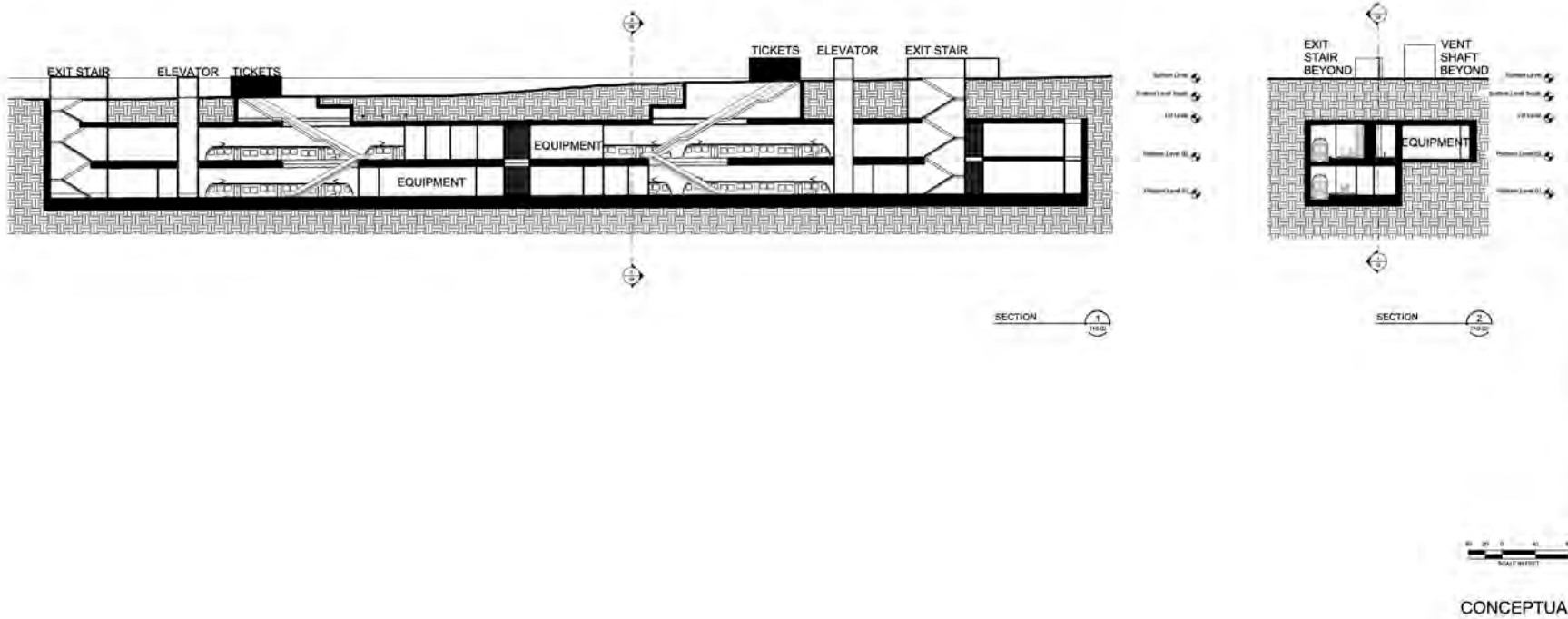
Cost-Savings Idea: Stacked Tunnel



Stacked Tunnel Configuration: Cost-Savings Idea 3b



Cost-Savings Idea: Stacked Tunnel



Stacked Tunnel Configuration: Cost-Savings Idea 3b

Cost-Savings Potential: \$8 to \$13M

Adopted Project at NE 6th



Downtown Tunnel North Portal at NE 6th – Adopted Project



Cost-Savings Idea: Relocate Station to NE 6th



Downtown Tunnel North Portal: Relocate Station to NE 6th: Cost-Savings Idea 3c

Cost-Savings Potential: \$10 to \$17M



Downtown Station Design



Downtown Tunnel North Portal: Relocate Station to City Hall Site: Cost-Savings Idea 3d

Cost-Savings Potential: \$14 to \$23M





Ideas Found Not to Have Cost Savings Upon Further Review

- Retained cut from Main Street to NE 2nd
 - Proposed reduction in ventilation equipment not feasible and ROW cost increased
- Side-running alignment on NE 16th
 - Construction savings offset by increased ROW cost
 - Bellevue has proposed an alternate cross-section which is under review



Next Steps

- May 29th Bellevue City Council Briefing
- June 5th Publish Cost-Savings Report
- June 5th Open House
- June 14th ST Capital Committee – Recommendation
- June 18th Bellevue City Council – Recommendation
- June 28th ST Board – Endorse Cost-Savings Ideas for Further Review



Questions?

