



East Link Extension  
Overlake Segment Pre-Final Design  
*November 19, 2013*

# Tonight's Agenda

- 6-8 p.m. Meet the team and view design plans
  - – Open house
- 6:30 – Presentation
  - Welcome and introductions (Jenna Franklin)
  - Project and segment overview (Leonard McGhee)
  - Station design update (Debora Ashland and Chad Zettle)
  - *STart* (Barbara Luecke)
  - Question and answers (Jenna Franklin)
- 7:15 - 8:00 – Open house
- 8 p.m. – Meeting adjourns





# East Link Extension Overview

Leonard McGhee, Sound Transit

# East Link Overview



2006-2011

2011-2014

2014-2022

Targeted 2022

Targeted 2023

Planning and environmental review

Pre-final design  
*(we are here)*

Design-build

Testing & pre-operations

East Link in service

# Overlake Segment Overview

- Two stations
  - Overlake Village along SR 520 at 152nd Ave
  - Overlake Transit Center
- Accommodates future growth and street improvements
- ~ 300 stall park-and-ride
- New pedestrian and bicycle bridges add connectivity across SR520



# What to Expect During Design-Build?



2014

2015

2016

Develop project requirements/  
Pre-final design

Develop contract  
Finalize project requirements

Procurement  
Hire contractor

Design updates

50% design milestone

Preparing for construction

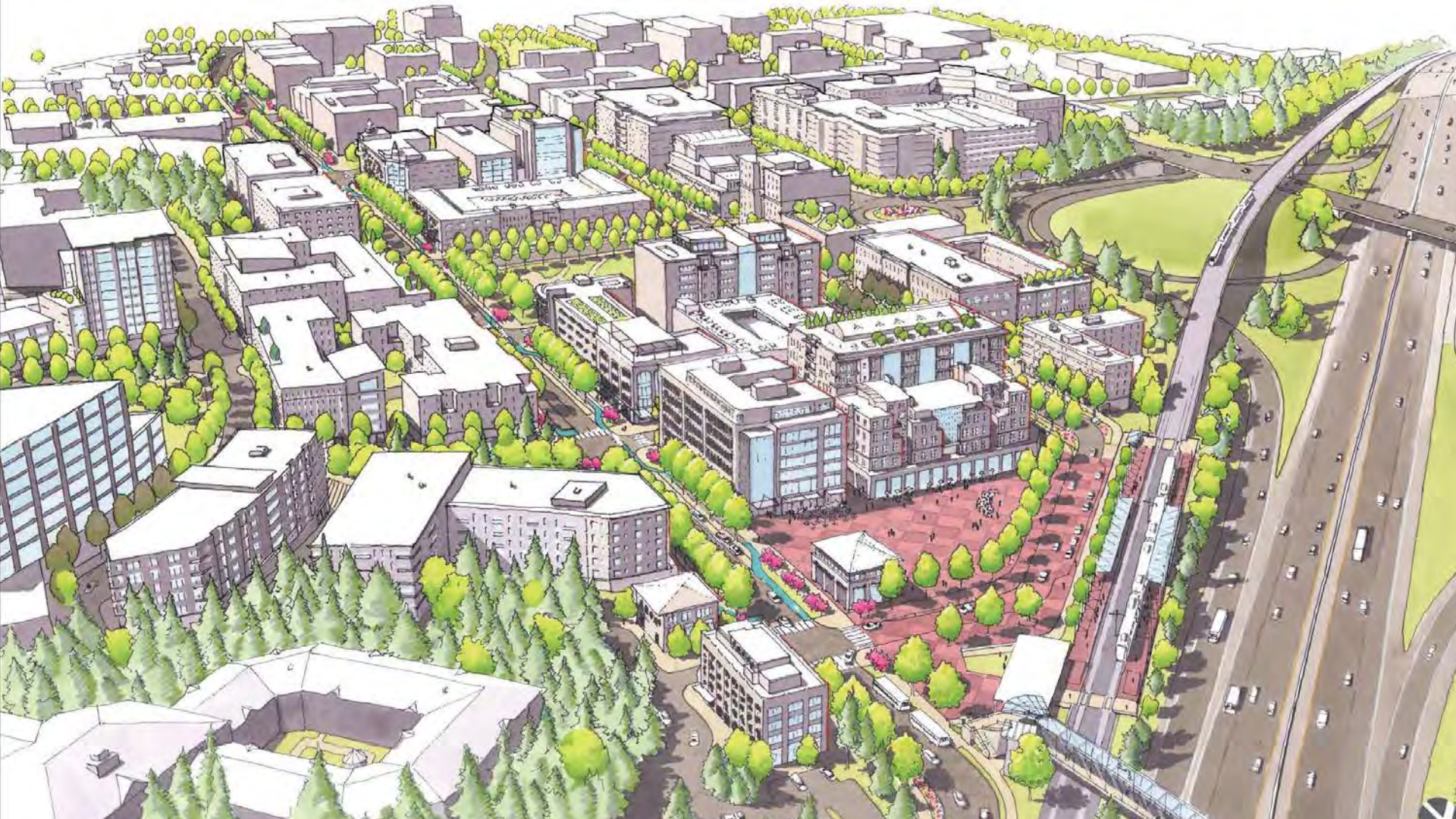
Construction begins

We are here

# City of Redmond

Jeff Churchill, City of Redmond





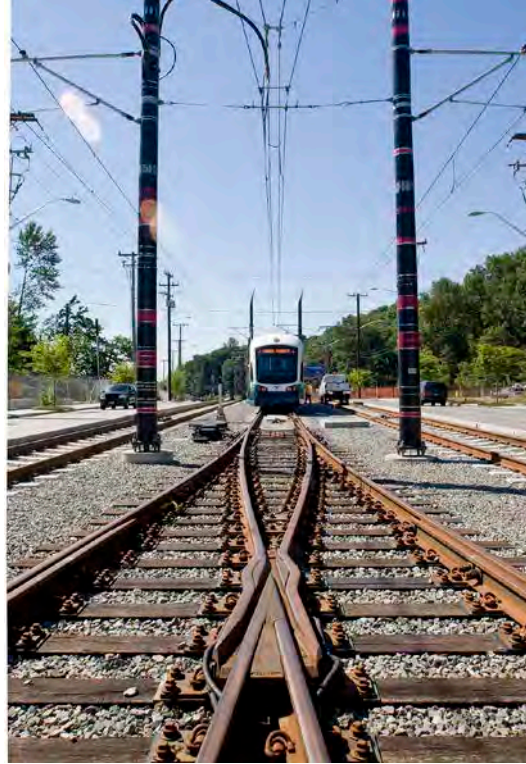




[www.redmond.gov/overlake](http://www.redmond.gov/overlake)



City of Redmond  
WASHINGTON







**Coming Soon!**

A photograph of a white Sound Transit bus, viewed from the front quarter angle. The bus is on a road, and the entire image is overlaid with a semi-transparent green filter. The destination sign above the windshield displays "SOUND TRANSIT" in green. The bus features the Sound Transit logo on the front bumper and a "Sound Transit" text label below the headlights. The background is a clear, bright sky.

# Overlake Village Station

Debora Ashland and Chad Zettle, Sound Transit



-   
 BUS ROUTE
-   
 PEDESTRIAN-BICYCLE  
 BRIDGE
-   
 LIGHT RAIL TRACKS  
  
  
 STATION

# Neighborhood Context Plan

\*Bridge design courtesy of City of Redmond. Subject to funding agreement.



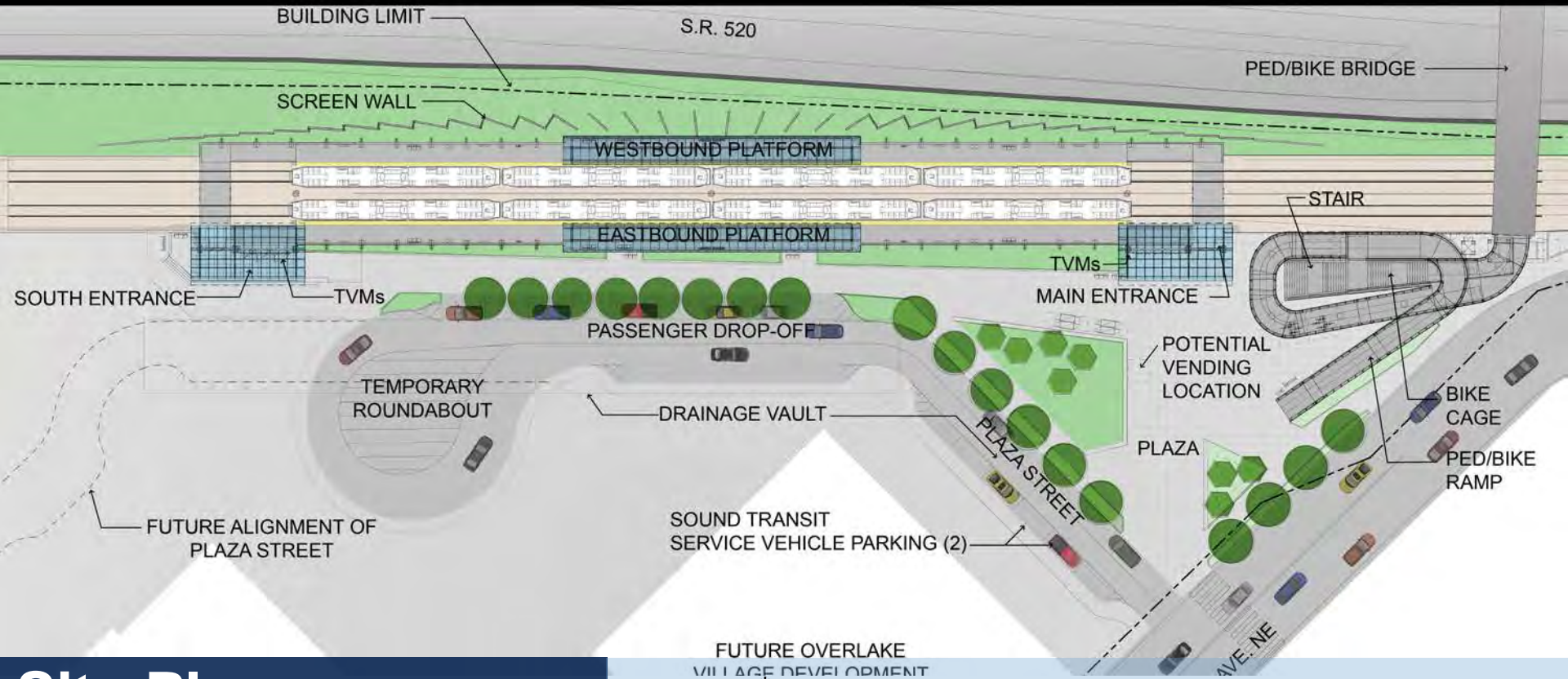
# Aerial View of Station

\*Bridge design courtesy of City of Redmond.  
Subject to funding agreement.



# Entrance Plaza View

\*Bridge design courtesy of City of Redmond.  
Subject to funding agreement.



# Site Plan

FUTURE OVERLAKE  
VILLAGE DEVELOPMENT

\* Bridge design courtesy of City of Redmond. Subject to funding agreement.





STATION NAME

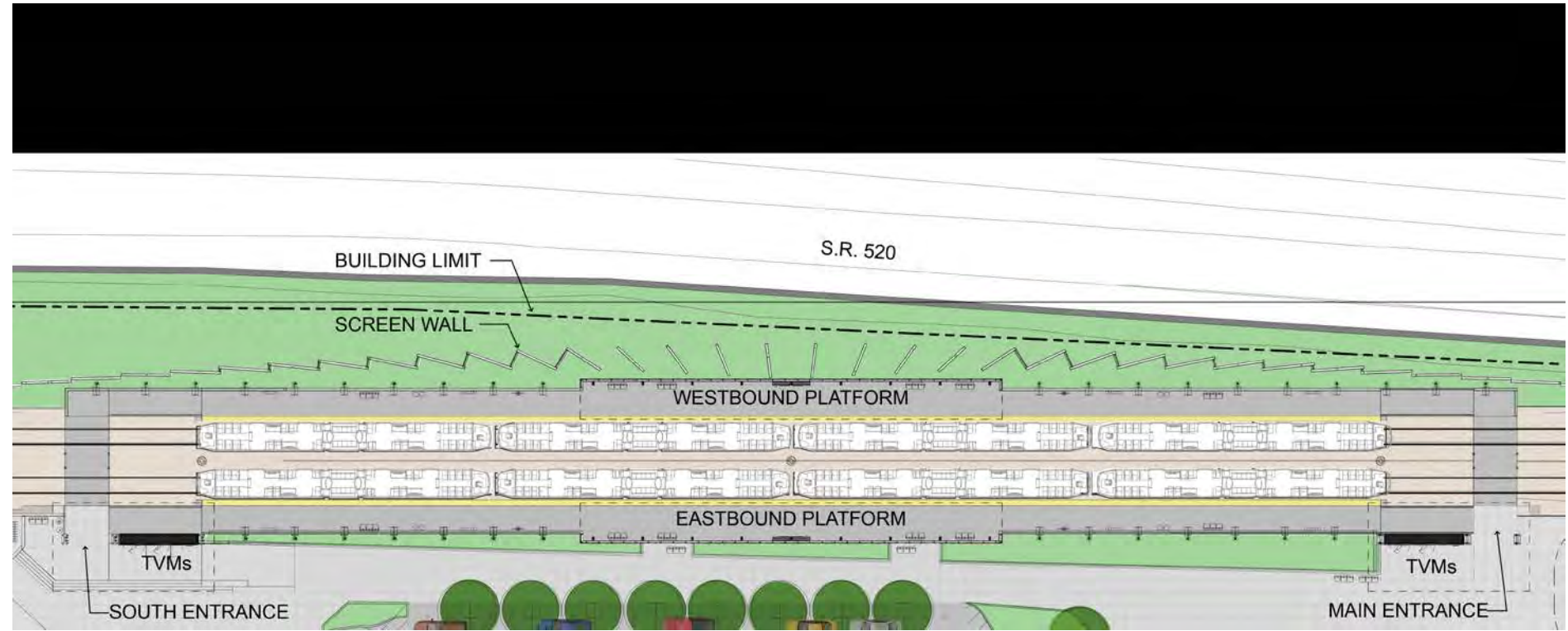
# North Entry Canopy

\*Bridge design courtesy of City of Redmond.  
Subject to funding agreement.



# South Entry Canopy

\*Bridge design courtesy of City of Redmond.  
Subject to funding agreement.



# Platform Plan



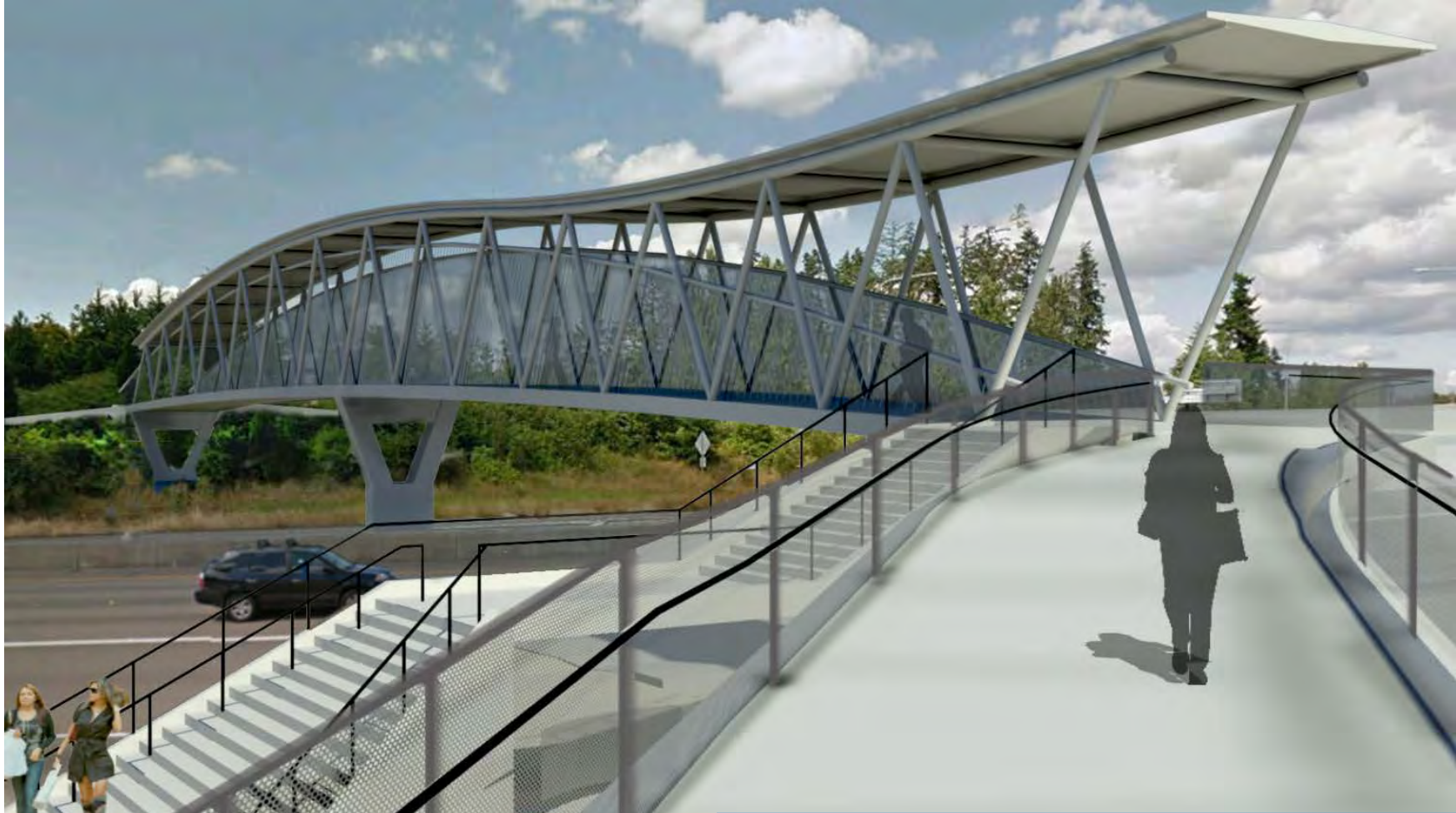
**Platform View Looking North**

\*Bridge design courtesy of City of Redmond.  
Subject to funding agreement.



# Station View from SR 520

\*Bridge design courtesy of City of Redmond.  
Subject to funding agreement.



## **Pedestrian-Bicycle Bridge\***

\*Bridge design courtesy of City of Redmond.  
Subject to funding agreement.



\*Bridge design courtesy of City of Redmond. Subject to funding agreement.

## **Pedestrian-Bicycle Bridge\***



# Overlake Transit Center Station

Debora Ashland and Chad Zettle, Sound Transit





LEGEND

BUS ROUTE

BICYCLE ROUTE

PEDESTRIAN-BICYCLE  
BRIDGE

LIGHT RAIL TRACKS

STATION



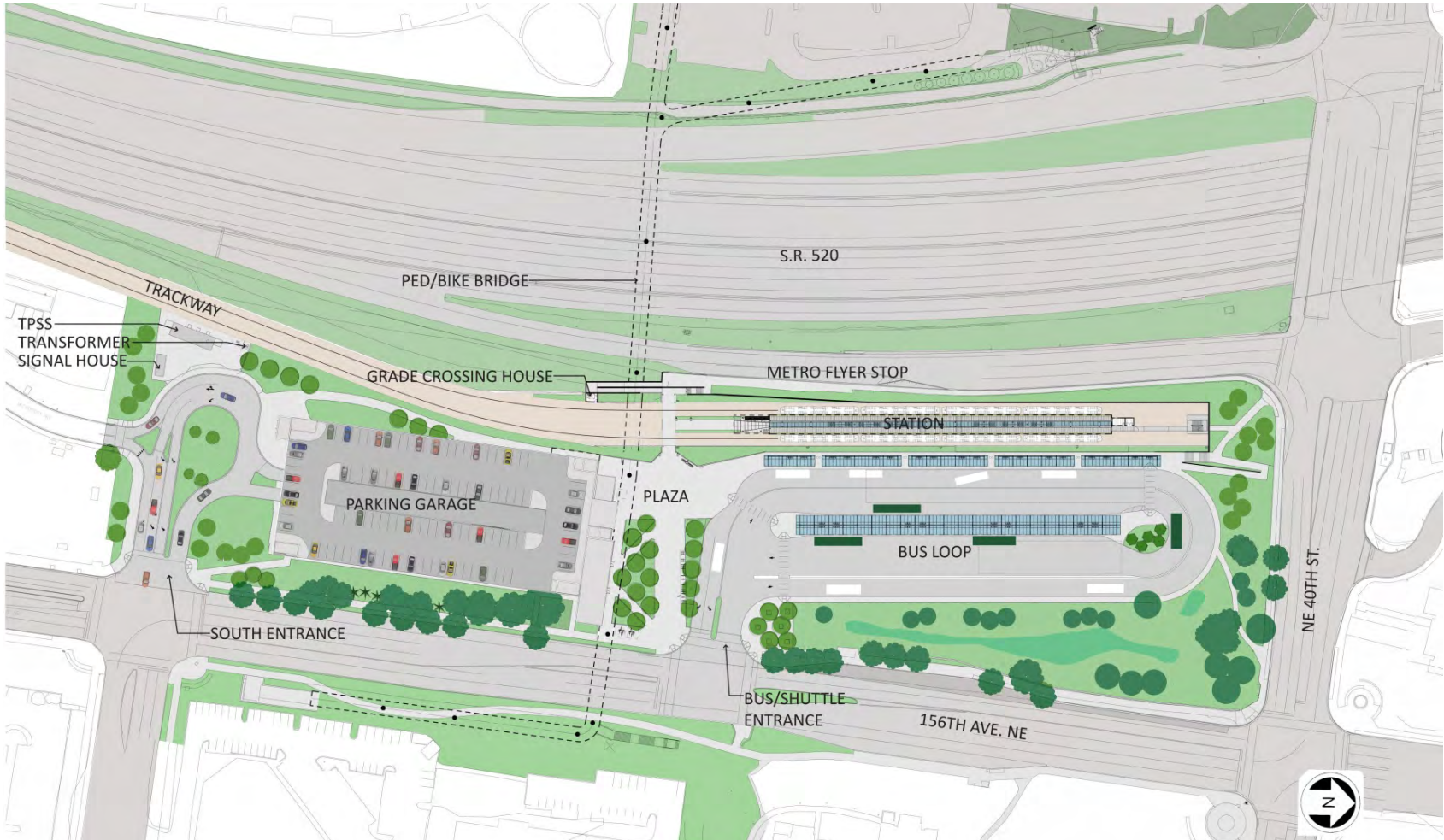
# Neighborhood Context Plan

\*Bridge design courtesy of Microsoft.  
Subject to funding agreement.



# Aerial View of Station

\*Bridge design courtesy of Microsoft. Subject to funding agreement.



# Site Plan

\*Bridge design courtesy of Microsoft. Subject to funding agreement.

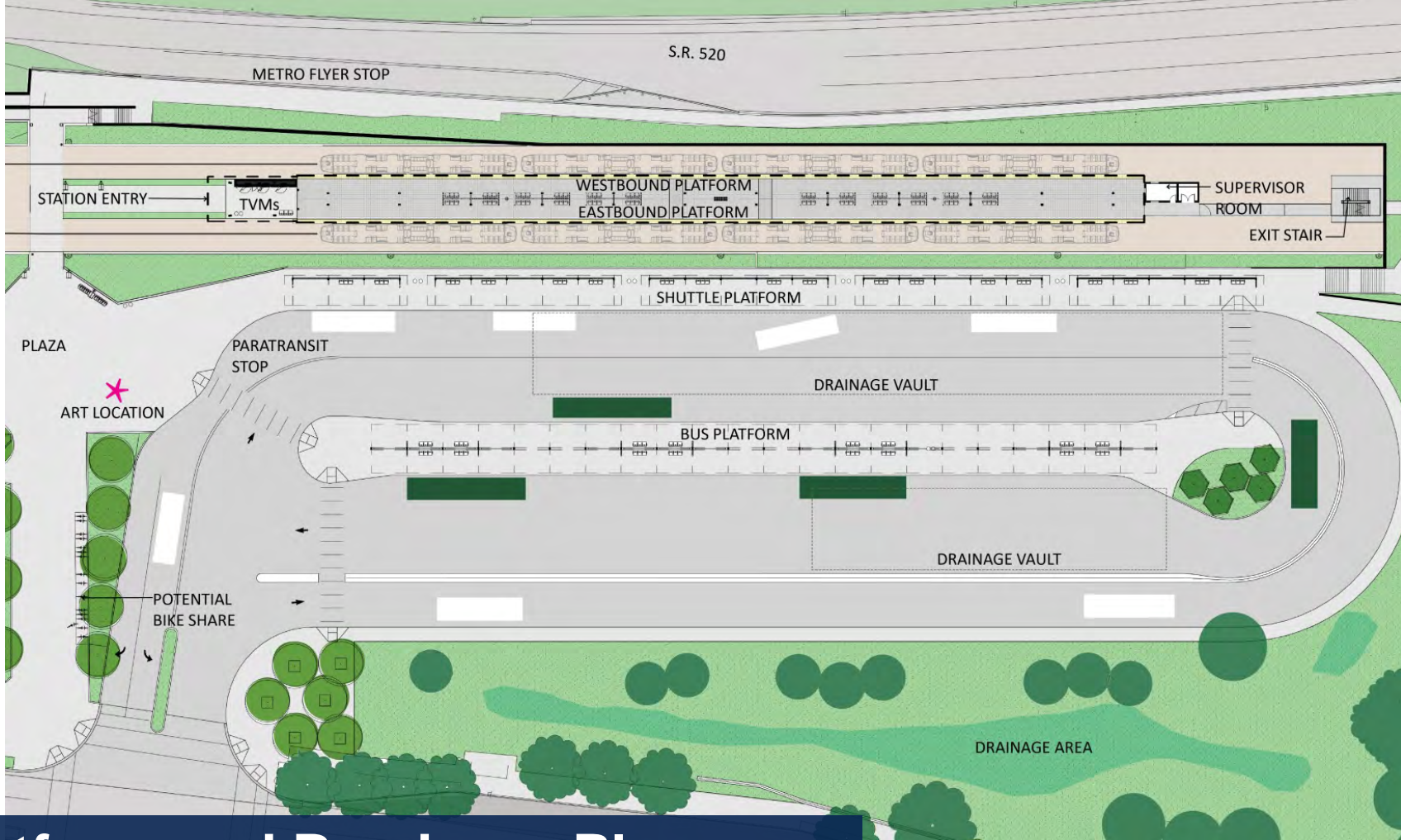


# Garage Plan – Main Level

\*Bridge design courtesy of Microsoft.  
Subject to funding agreement.



**View of Entry from Plaza**



# Platform and Bus Loop Plan



# View of Bus Loop

\*Bridge design courtesy of Microsoft. Subject to funding agreement.



**View from Flyer Stop**





**View of Platform Entrance**



# Station Canopy Design



**Platform View**



Bridge design courtesy of Microsoft. Subject to funding agreement.

# Pedestrian-Bicycle Bridge



Bridge design courtesy of Microsoft. Subject to funding agreement.

# Pedestrian-Bicycle Bridge



# Pedestrian-Bicycle Bridge

\*Bridge design courtesy of Microsoft.  
Subject to funding agreement.



# Transit Center Parking – Idea Imagery

# *STart*

Barbara Lueke, Sound Transit Art







*ST* art on Link

Sound Transit Art Program



# Next Steps

Jenna Franklin, Sound Transit Community Outreach



# Permanent Station Names

- Reflect the nature of the community and environment
- Succinct and easy to read
- Comply with federal Americans with Disabilities Act guidelines and limited to 30 characters
- Avoid commercial references
- Avoid similar names or words in existing facilities



# What's Next?

- Identify permanent station names
- Hire station artists
- Finalize construction contract package
- Hire design-build contractor
- Future community outreach and open house



# We Want to Hear from You Tonight!

- Sound Transit Community Outreach staff is accessible by phone, email, and is available to meet in person
- Contact Community Outreach staff: [eastlink@soundtransit.org](mailto:eastlink@soundtransit.org) or **206-398-LINK**
- Sign-up to receive email updates: [www.soundtransit.org/subscribe](http://www.soundtransit.org/subscribe)
- Visit the project website: [www.soundtransit.org/eastlink](http://www.soundtransit.org/eastlink)
- Stay tuned for information tables next month!

# Comments or Questions?

