



East Link Extension Downtown Segment 60% Design Open House

March 25, 2014

Tonight's agenda

- 5-7 p.m. – Open house
 - Meet the team
 - View design plans
 - Tell us what you think!
- 5:30 – Presentation
 - Welcome and introductions (Amy Danberg)
 - City of Bellevue CAC introduction (Kate March)
 - East Link overview (Paul Cornish)
 - STart (Barbara Luecke)
 - Station design update (John Walser)
 - Questions and comments
- 6:00 – Return to open house
- 7:00 - Close





City of Bellevue

Light Rail Permitting Citizen's Advisory Committee

- Appointed by the Bellevue City Council
- 9 Bellevue Residents
- Represents a citywide perspective on the design and mitigation permit process for East Link



City of Bellevue

Reviews major project components:

- Station design
- Park & rides
- Landscaping
- Accessory structures
- Noise walls
- Tunnel portals
- Public art



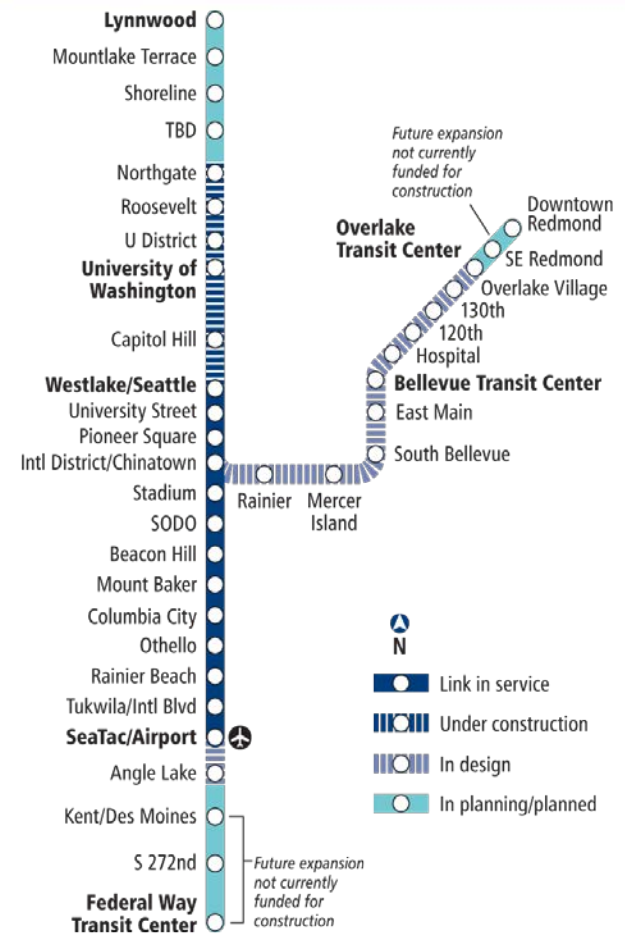
City of Bellevue

Concurrent Project Information

- Downtown Livability Initiative
- City Hall Plaza Redesign
- New Downtown Neighborhood Association
- Station Area Planning Program
- 120th Phase II, NE 8th – NE 12th

Link light rail system

- 16 miles of light rail with 13 stations currently in service
- University Link & South 200th Link under construction; open 2016
- ST2 Plan funded extensions to Overlake, South King County, and Lynnwood
- 50+ mile system



East Link overview

Length: 14 miles

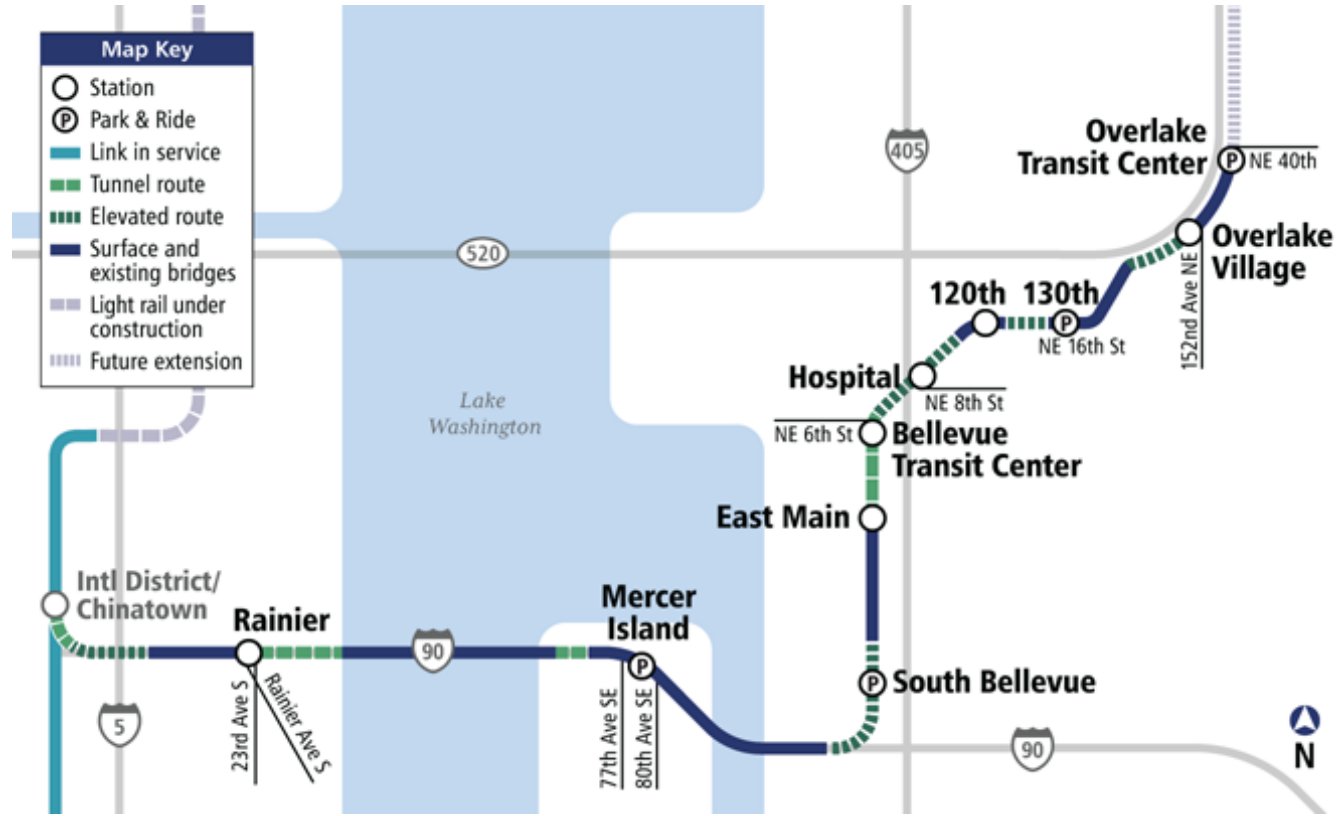
Ride times:

- Mercer Island to UW: 20 min.
- S. Bellevue to Intl. District: 14 min.
- Overlake Transit Center to Bellevue Transit Center: 10 min.

Rider projection: 50,000 daily by 2030

Budget: \$2.8 billion (2010 \$)

Start of Service: Targeted 2023



Downtown Bellevue Segment

Bellevue Transit Center & Hospital Stations

- Provides access to high quality, frequent transit service that operates 20 hours per day
- Approximately 7,000 daily boardings would occur in this segment (2030)
- Light rail in this area would serve the dense central business district of downtown Bellevue, providing access to employment, education, recreation, and the growing medical district and Wilburton area



East Link timeline & recent progress



- ✓ Completion of geotechnical explorations
- ✓ Property acquisition initiated
- ✓ Shoreline Permit submitted
- ☐ GCCM procurement (late 2014)

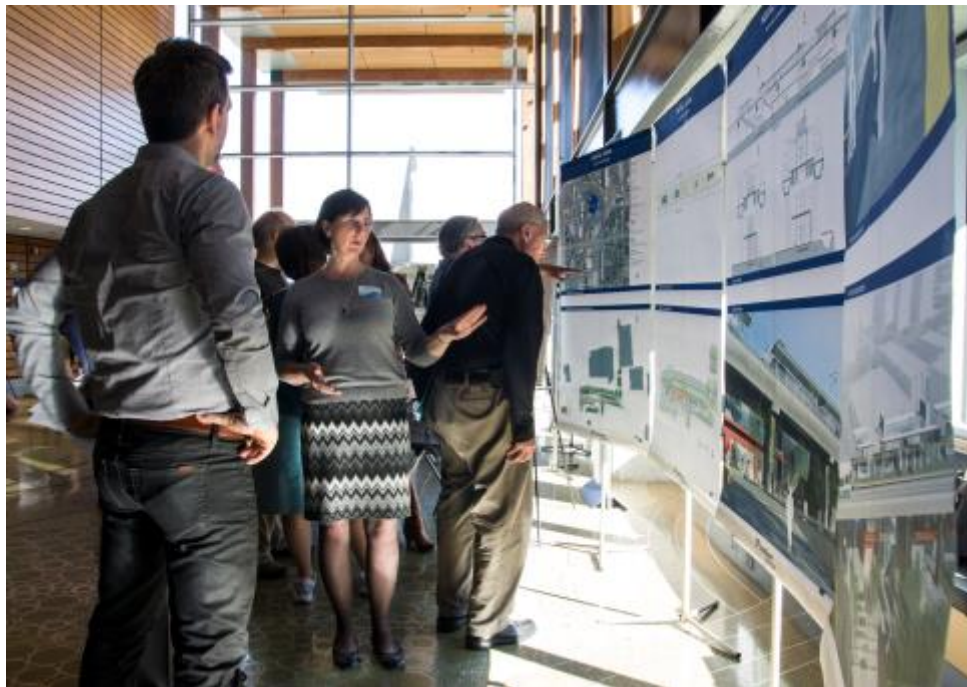
What we've heard

Station Design

- Weather protection, eastern entrance, and accommodate future development at BTC
- Train arrival and departure notifications at Hospital

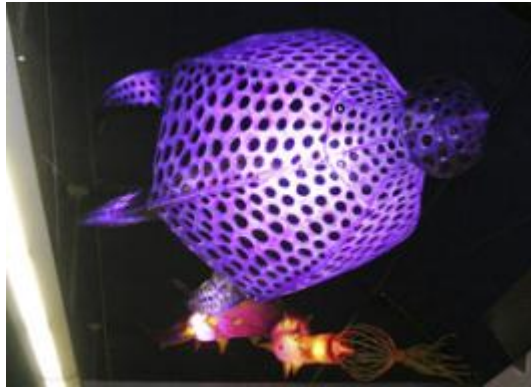
Construction

- GCCM procurement method
- Reduced extent of cut-and-cover construction as a result of SEM tunneling



STart on LINK

Sound Transit Art Program





Station Design Overview

Bellevue Transit Center & Hospital Stations



LEGEND

BUS ROUTE

BICYCLE ROUTE

BICYCLE LANE

OFF STREET PATH

LIGHT RAIL TRACKS

STATION

PATRON CATCHMENT AREA

CITY OF BELLEVUE - 2009 PEDESTRIAN & BICYCLE TRANSPORTATION PLAN

COMMERCIAL

CIVIC / INSTITUTIONAL

MULTI-FAMILY RESIDENTIAL

HOTEL

PARKING STRUCTURE



Bellevue Transit Center



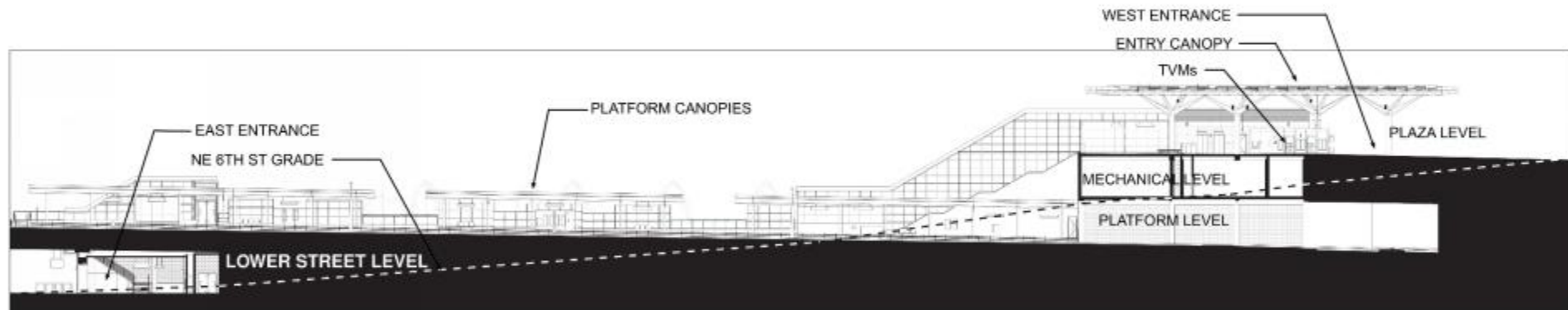
Aerial View From BTC

Bellevue Transit Center





West Entry View



SECTION B-B

Bellevue Transit Center



Platform View

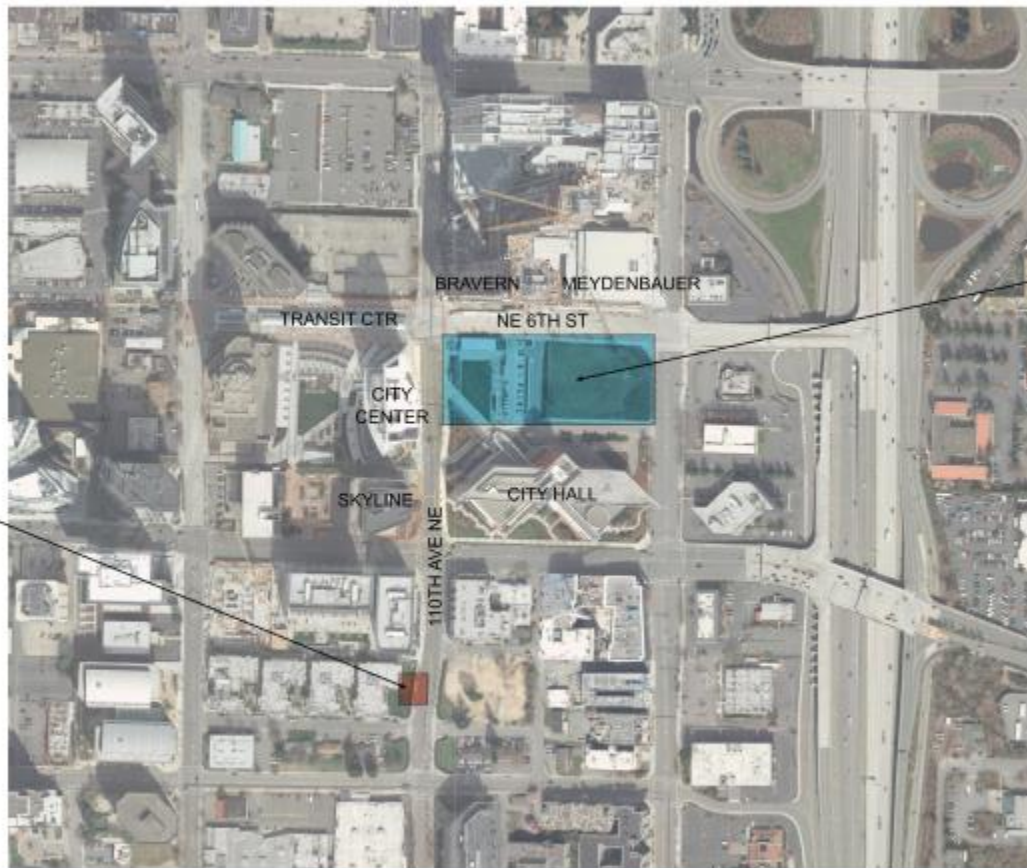
Bellevue Transit Center



East Entry View

Mid-Tunnel Access Shaft Headhouse

MID-TUNNEL ACCESS
SHAFT HEADHOUSE



BTC STATION

Mid-Tunnel Access Shaft Headhouse



View From NE 2nd Place

Hospital Station





Station View Looking Northwest

Hospital Station





Station North Entrance



APPROACHING STATION FROM NORTH ACCESS PATH AT EDGE OF WHOLE FOODS PARKING LOT



APPROACHING STATION FROM NORTH ACCESS PATH ON BRIDGE CROSSING STRUTEVUNT CREEK



APPROACHING STATION FROM NORTH ACCESS PATH AT TICKET VENDING MACHINES



APPROACHING STATION FROM NORTH ACCESS PATH ENTERING NORTH STATION ENTRANCE



Platform View Looking South

A blue-tinted photograph of a Sound Transit train, viewed from the front. The train is on tracks and has "SOUND TRANSIT" written on the top of the windshield. The text "Permanent Station Naming" is overlaid in white on the left side of the image.

Permanent Station Naming

Permanent station names-(what we've heard)

BTC

- Downtown Bellevue
- Bellevue Transit Center
- Bellevue Civic Center

Hospital

- Lake Bellevue
- Midlakes



Questions?

