

East Link Extension
Mercer Island 60% Design Open House

July 10, 2014

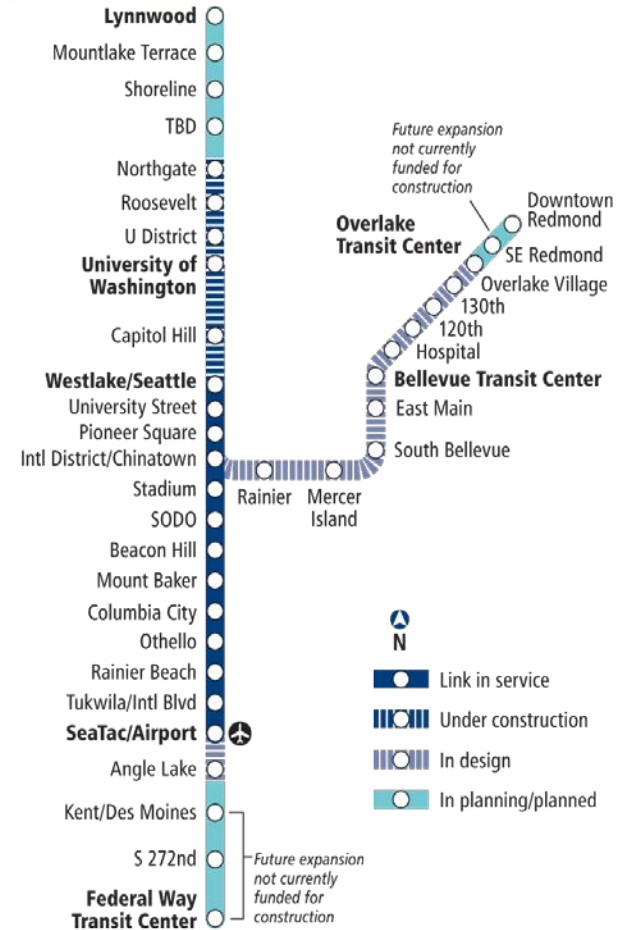
Tonight's agenda

- 5-7 p.m. – Open house
 - Meet the team
 - View design plans
 - Tell us what you think
- 5:30 – Presentation
 - Welcome and introductions (Blake Jones)
 - East Link overview (Tia Raamot)
 - Station design update (David Hewitt)
 - *STart* (Tim Marsden)
 - Question and answer
 - Animation
- 6:00 – Return to open house
- 7:00 - Close



Link light rail system

- 16 miles of light rail with 13 stations currently in service
- University Link under construction; opens 2016
- ST2 Plan funded extensions to Overlake, South King County, and Lynnwood
- 50+ mile system



East Link overview

Length: 14 miles

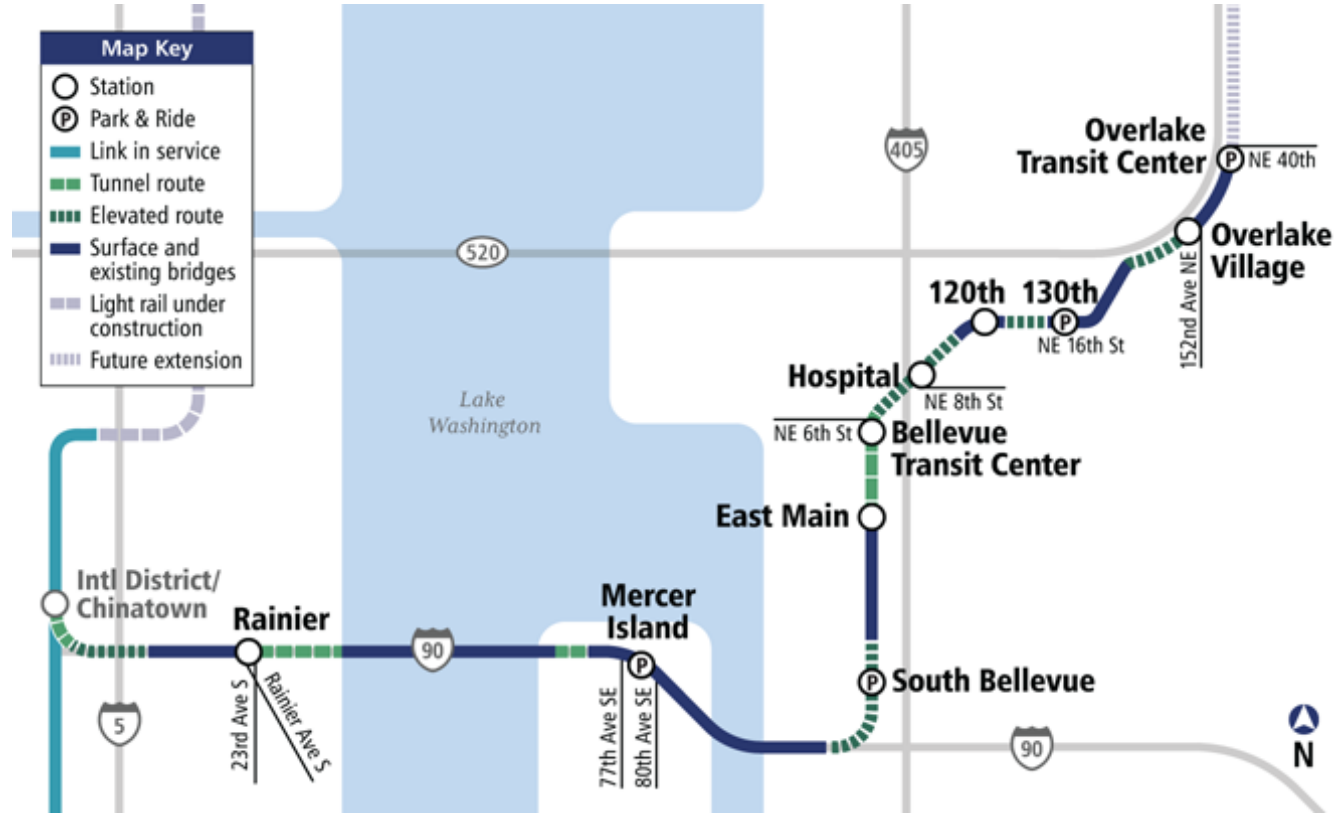
Ride times:

- Mercer Island to UW: 20 min.
- S. Bellevue to Airport: 50 min.
- Overlake Transit Center to Bellevue Transit Center: 10 min.

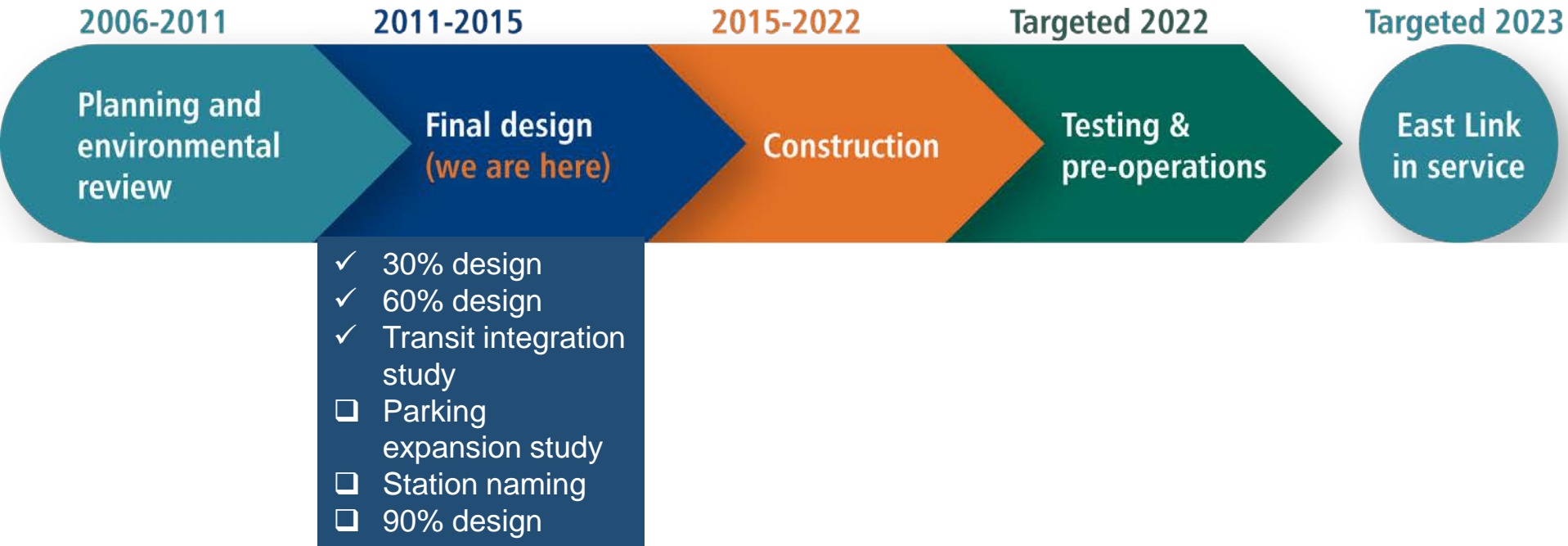
Rider projection: 50,000 daily by 2030

Budget: \$2.8 billion (2010 \$)

Start of Service: Targeted 2023

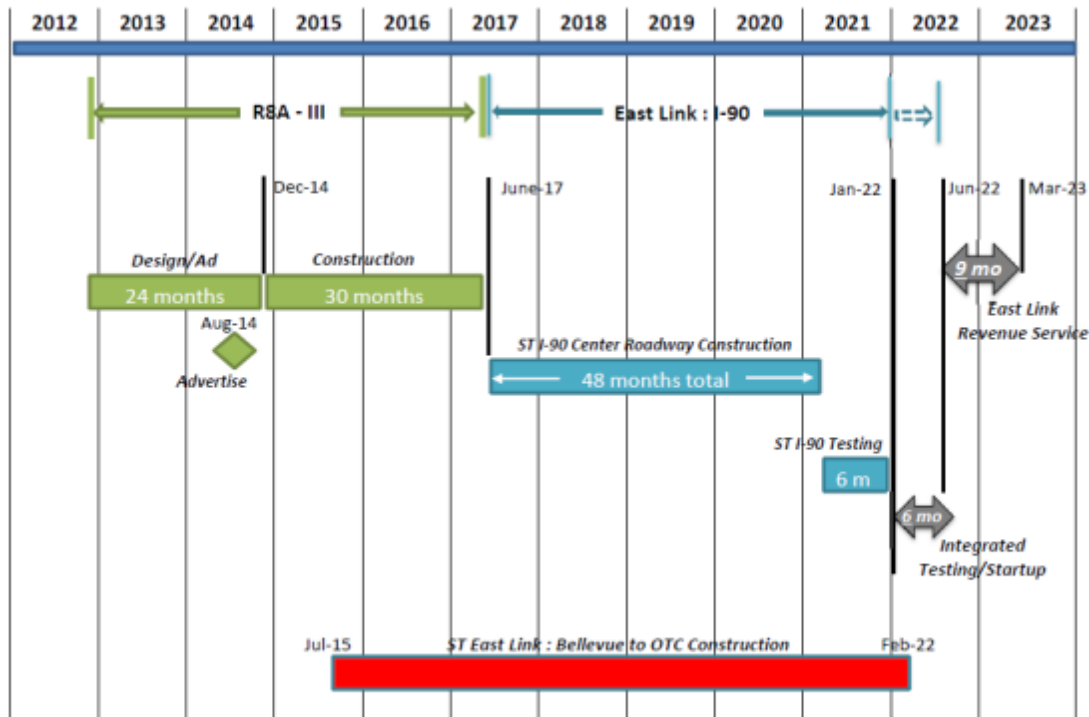


East Link timeline & recent progress

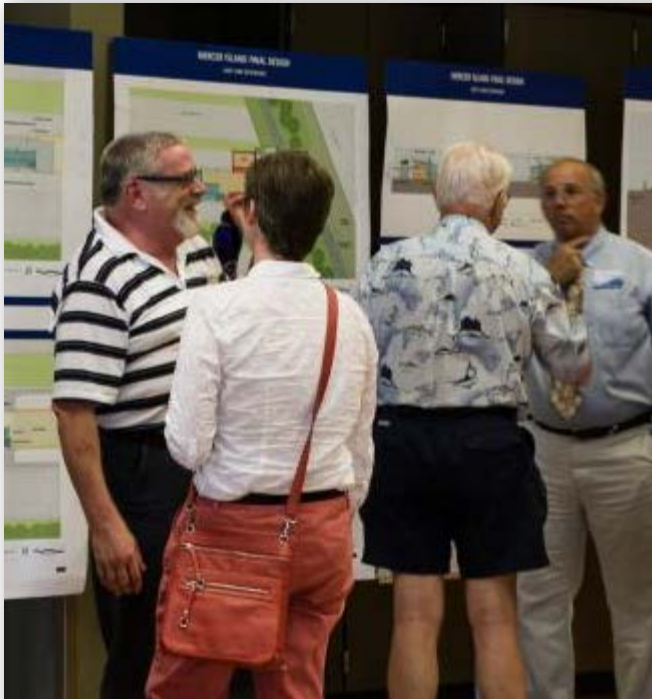


I-90: HOV lanes

- Sound Transit is working with WSDOT to provide full-time HOV lanes in the outer roadways, in preparation for light rail in the center roadway
- Access to the center roadway was extended 9 months to June 2017



What we've heard



Key Themes:

- Parking
- Safety and security
- Construction impacts
- Station design
- Station name

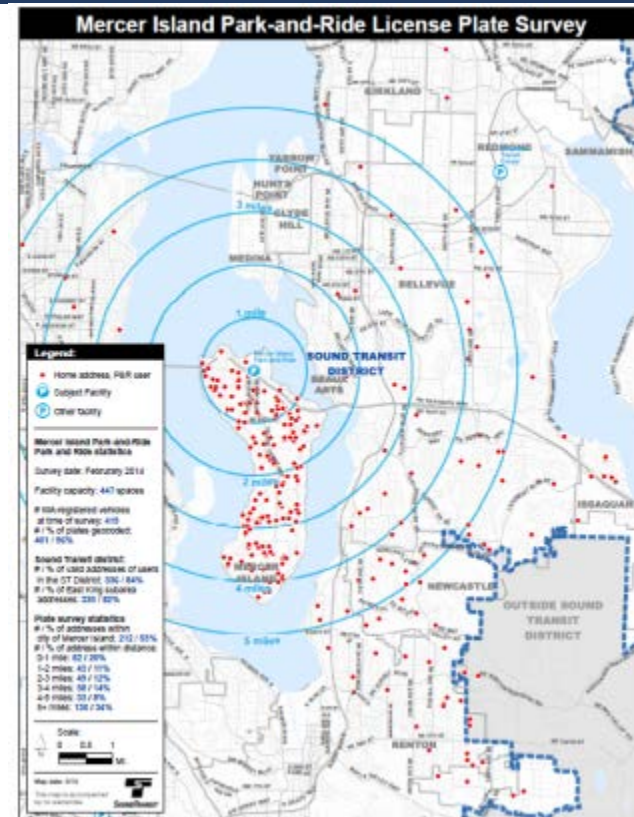
Public Involvement:

- 30% design open house
- M.I. Farmers Market
- M.I. Summer Celebration

Partnership with the City of Mercer Island

Parking Expansion Study

- 53% of Park & Ride users live on Mercer Island
- Existing Park & Ride is full by 7:30 am
- Sound Transit and Mercer Island are partnering to find a solution



Partnership with the City of Mercer Island

Transit Integration Study

Sound Transit and King County Metro are designing changes to the way transit crosses I-90. Bus and light rail service will connect at regional transit hubs, including the Mercer Island and South Bellevue stations, where transit riders will transfer between bus and light rail.



Partnership with the City of Mercer Island

Mercer Island Advisory Group

- 3 City Council members
- 3 Design Commission members
- 3 Arts Council members

Mission: Provide input on Mercer Island Station design

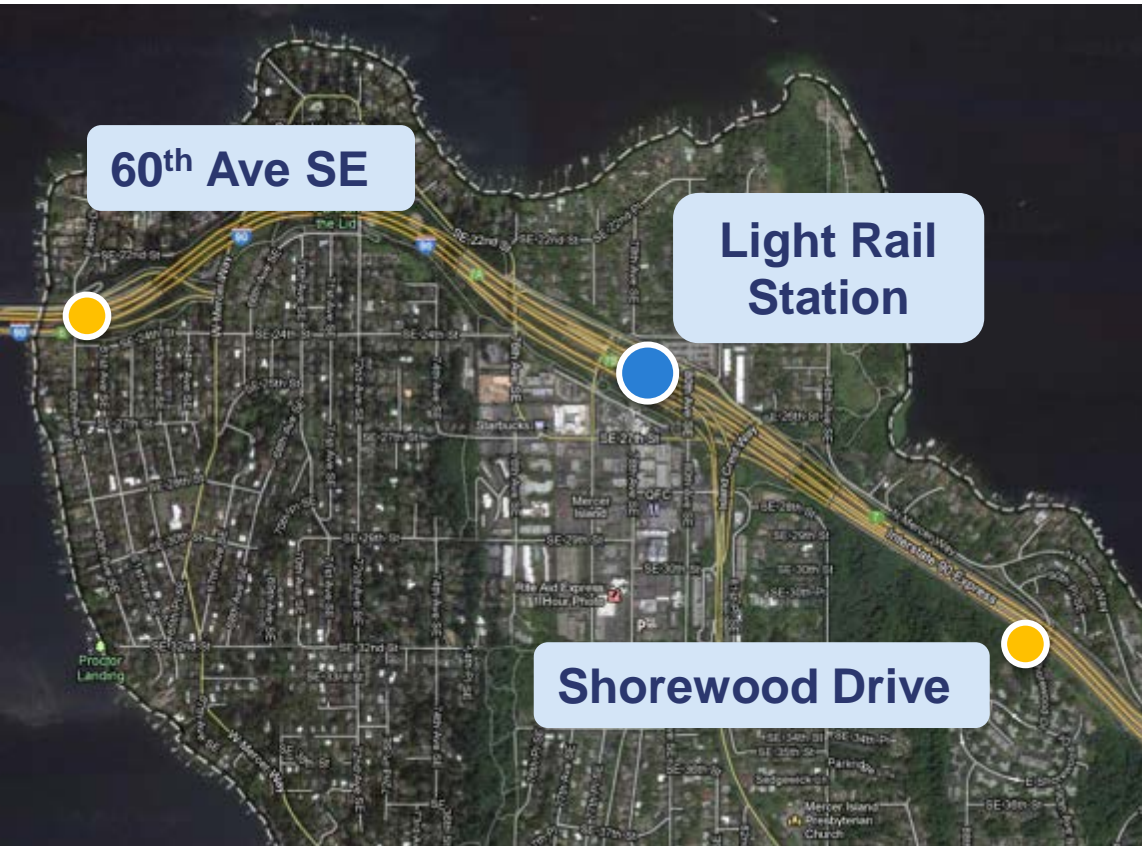
Permanent station names

- Reflect the nature of the community and environment
- Succinct and easy to read
- Comply with federal Americans with Disabilities Act guidelines and limited to 30 characters
- Avoid commercial references
- Avoid similar names or words in existing facilities



Comment on station names tonight

Supporting structures



60th Ave SE



Shorewood Drive

A blue-tinted photograph of a Sound Transit train, viewed from the front. The train is on tracks, and the words "SOUND TRANSIT" are visible on the upper part of the front window. The train's headlights and front grille are also visible.

Station Design Overview

Mercer Island Station

Context Plan



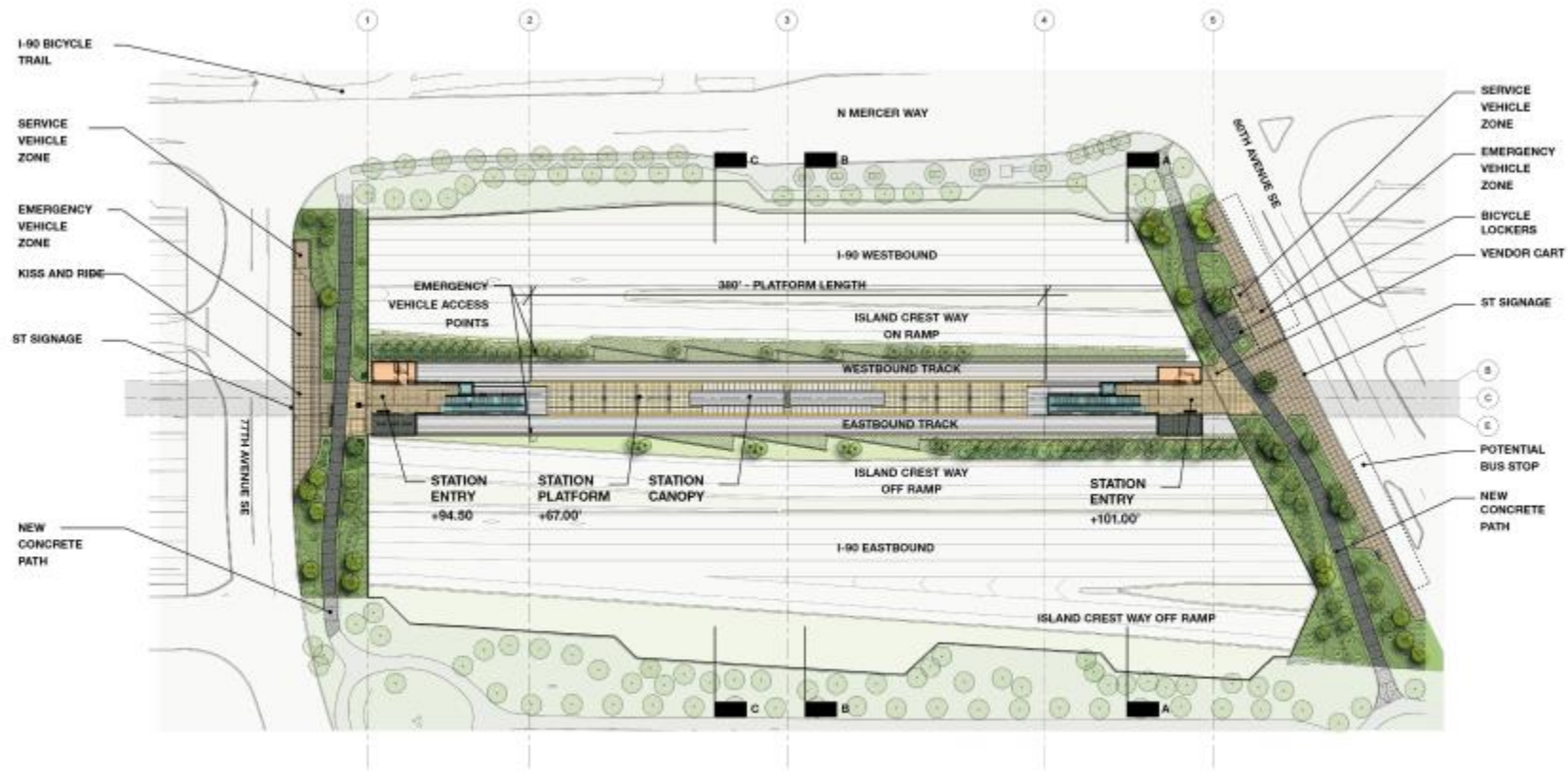
LEGEND

- Pedestrian / Bicycle Route
- Potential Bus Route
- Potential Bus Stop
- Project Extent
- Station Platform
- Station Entrance
- Major Intersection
- 1/4 Mile Radius from Entrances

East Entry at 80th Ave SE



Site Plan

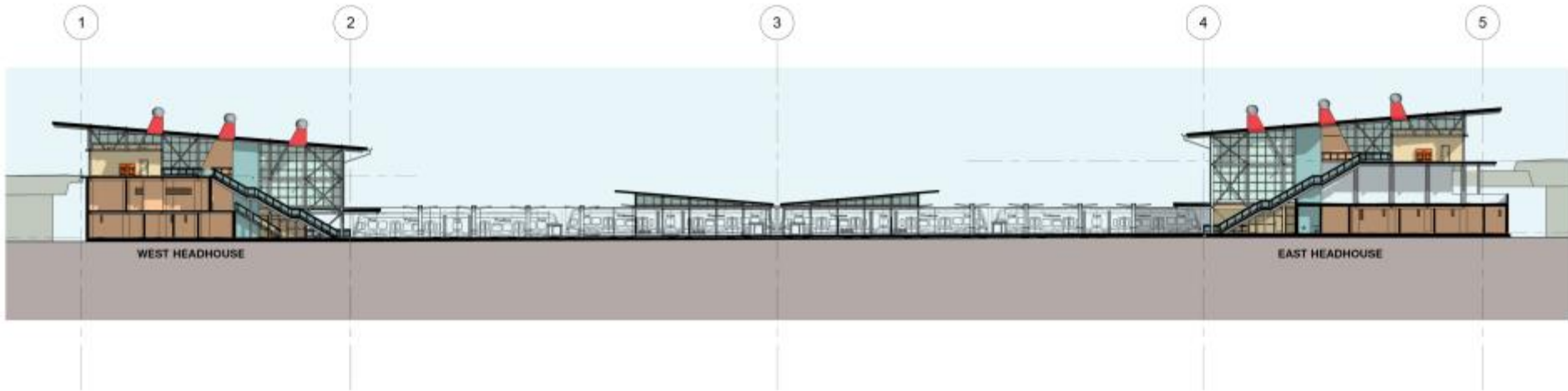


LEGEND

	Auxiliary Rooms		Platform		Station Entry
	Bicycle Storage		Pattern Circulator		Ticketing



Longitudinal Section

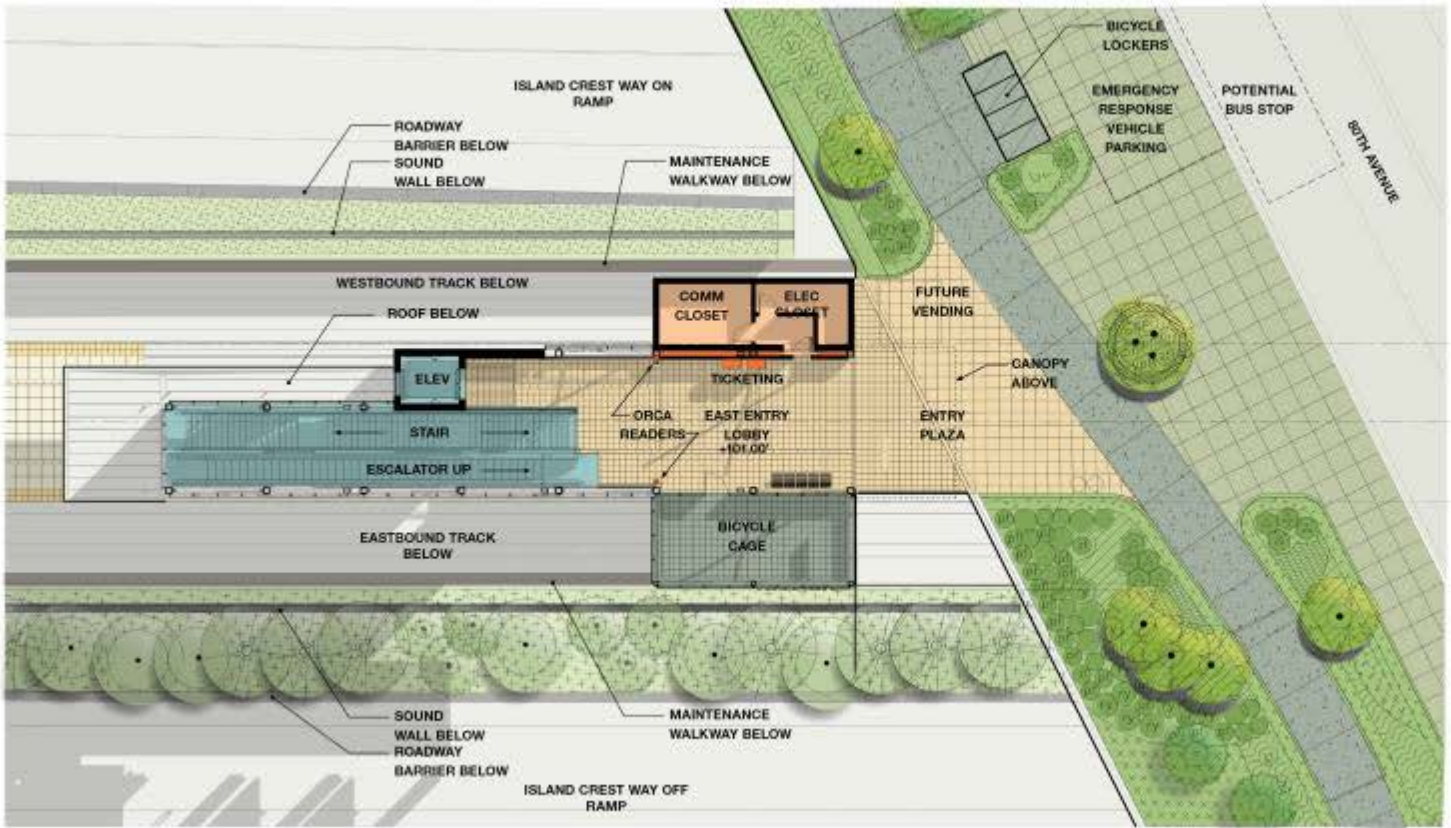


	Ancillary Floors		Platform		Station Entry
	Bicycle Storage		Patron Circulation		Ticketing

LEGEND



East Entry – 80th Ave Entrance Plan

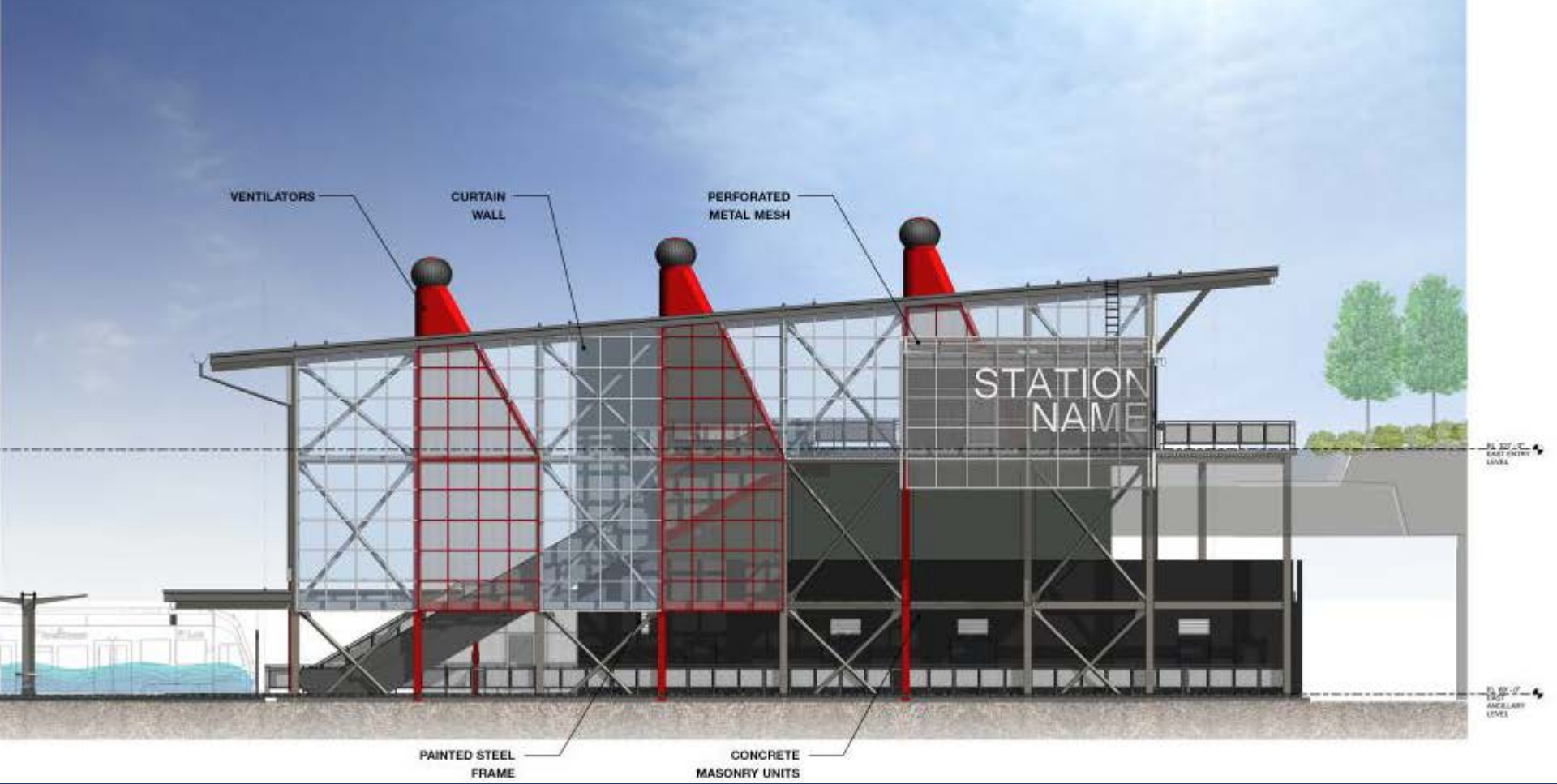


LEGEND

Orange	Auxiliary Rooms	Light Yellow	Platform	Light Orange	Station Entry
Teal	Bicycle Storage	Light Blue	Passion Circulation	Red	Ticketing

B
C
E





East Headhouse – South Elevation

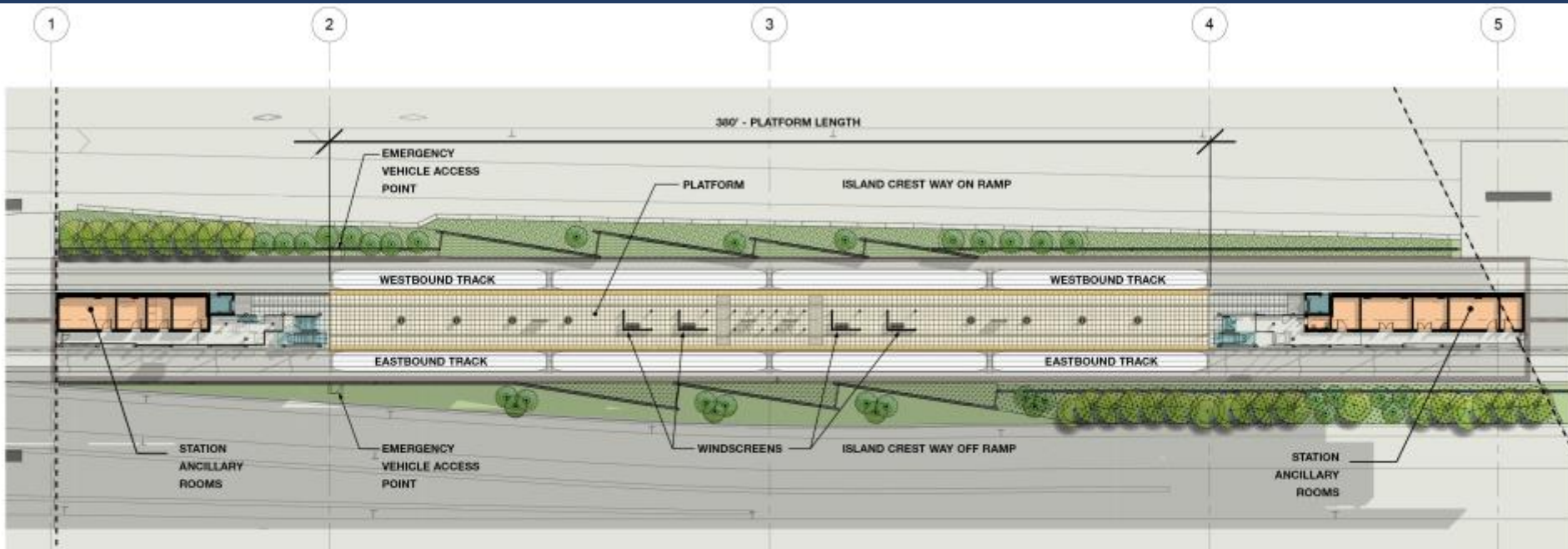


East Entry – Cut Away at Platform Looking East

Platform Canopy – Looking East at 80th Ave SE



Platform Plan



	Ancillary Rooms		Platform		Station Entry
	Bicycle Storage		Patron Circulation		Ticketing

LEGEND



SCALE IN FEET

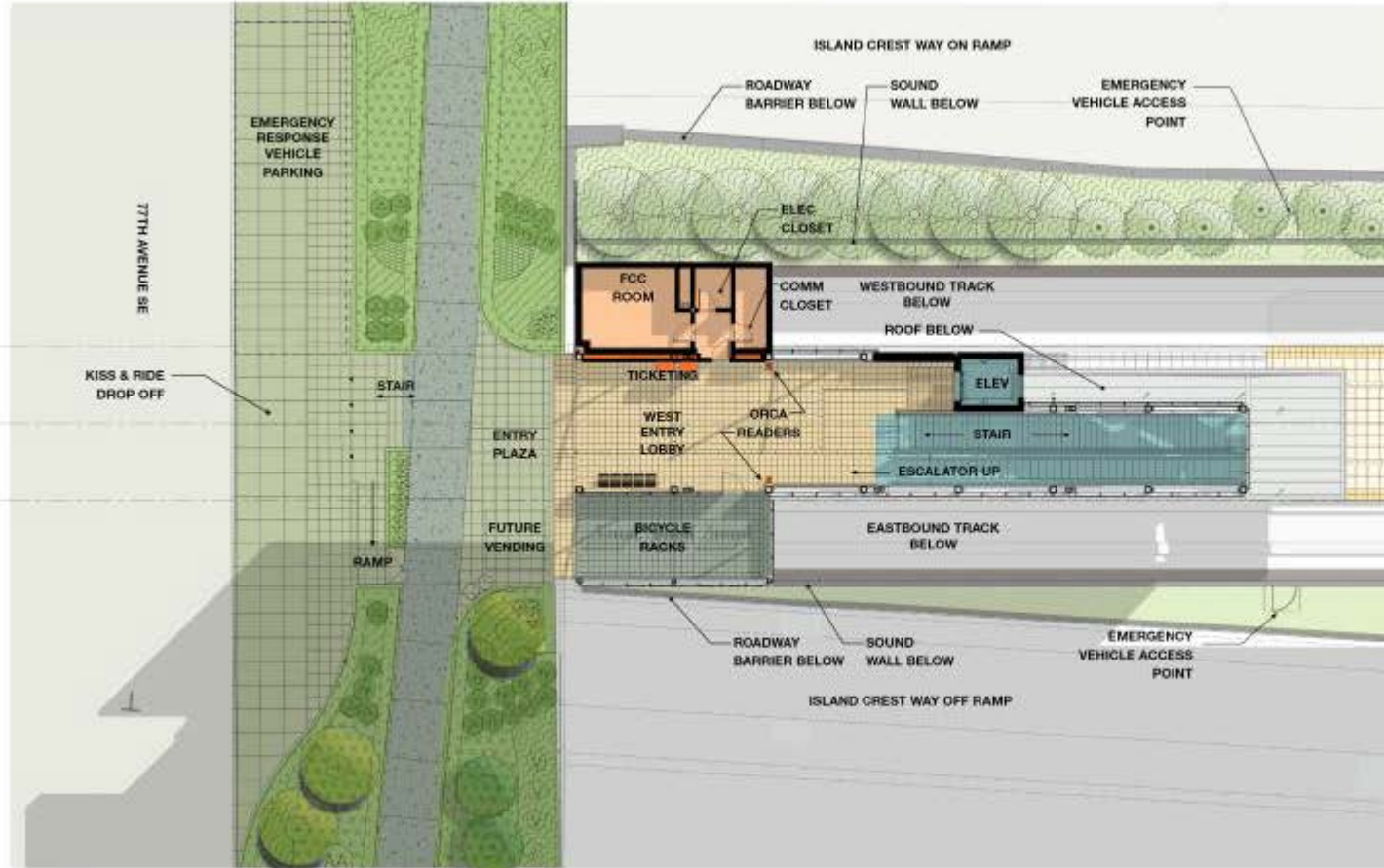


West Entry at Platform Looking West

West Entry at 77th Ave SE



West Entry – 77th Ave Entrance Plan



KEY MAP

- | | | |
|-----------------|--------------------|---------------|
| Ancillary Rooms | Platform | Station Entry |
| Bicycle Storage | Patron Circulation | Ticketing |

LEGEND

(B)

(C)

(E)



View from Mercer Island Park & Ride



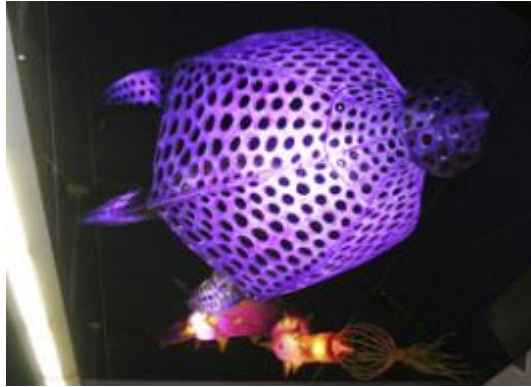
STart

Sound Transit's Integrated Art Program



STart on LINK

Sound Transit Art Program



Next steps

- Continue coordination with local jurisdictions and the public
- Select a permanent station name
- Select a transit integration concept
- Select station artists
- Advance design to 90% milestone

Join us!

- July 12 & 13: M.I. Summer Celebration
- July 15: M.I. Community & Event Center, 11:30 am – 1:30 p.m.
- July 16: M.I. Tully's, 12:30 pm – 2:30 p.m.

We want to hear from you!

- Sound Transit Community Outreach staff is accessible by phone, email, and is available to meet in person
- Contact Community Outreach staff: eastlink@soundtransit.org or 206-398-LINK
- Attend final design community meetings
- Sign-up to receive email updates: www.soundtransit.org/subscribe
- Visit the project website: www.soundtransit.org/eastlink

Questions?

