

East Link Extension South Bellevue Final Design Open House

May 30, 2013

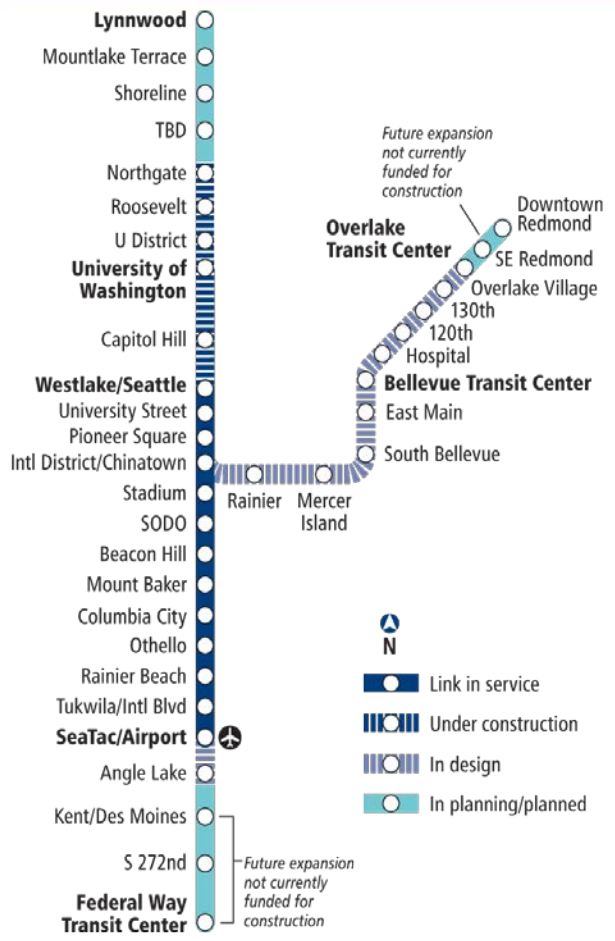
Tonight's agenda

- 5-7 p.m. – Open house
 - Meet the team
 - View design plans
 - Tell us what you think!
- 5:30 – Presentation
 - Welcome and introductions (Luke Lamon)
 - East Link overview (Sue Comis)
 - Station design update (Mark Reddington)
 - STart (Barbara Luecke)
 - Questions and answers
- 6:00 – Return to open house
- 7:00 - Close



Link light rail system

- 16 miles of light rail with 13 stations currently in service
- University Link under construction; opens 2016
- ST2 Plan funded extensions to Overlake, South King County, and Lynnwood
- 50+ mile system



East Link overview

Length: 14 miles

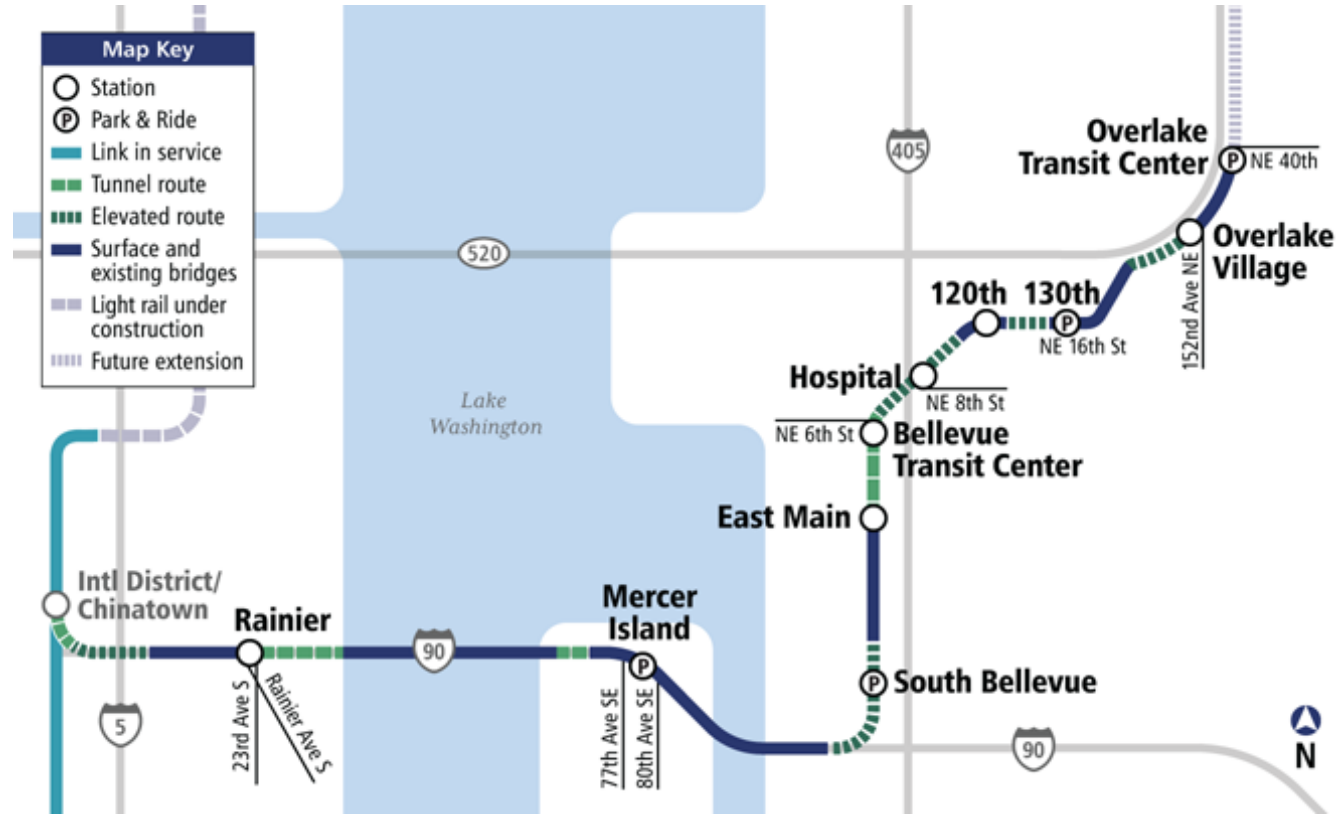
Ride times:

- Mercer Island to UW: 20 min.
- S. Bellevue to Airport: 50 min.
- Overlake Transit Center to Bellevue Transit Center: 10 min.

Rider projection: 50,000 daily by 2030

Budget: \$2.8 billion (2010 \$)

Start of Service: Targeted 2023



East Link timeline



South Bellevue Segment overview

- Serves South Bellevue in a trench along Bellevue Way SE and an at-grade alignment along 112th Ave SE
- Approximately 7,000 daily boardings (2030)
- Two stations in this segment:

South Bellevue: Located at current South Bellevue Park-and-Ride lot. Includes approximately 1,500 parking stalls.

- Southbound HOV lane on Bellevue Way from the South Bellevue Station to I-90

East Main: South of the intersection of 112th Ave SE and Main Street.



Cost savings process: Bellevue Way & 112th SE



Sound Transit Board and Bellevue City Council approved \$30-53 million in cost savings; finalized East Link alignment

Light rail remains in a trench in front of the Winters House

112th Ave SE: Elevated 112th Ave SE over at-grade light rail tracks & emergency access only at SE 4th (looking south)



What you can expect during final design

Design milestones

100 percent design

Final design kick-off
(Spring 2013)

60 percent design
(Second half of 2013)

90 percent design
(2014)

Start
construction
(targeted
2015)

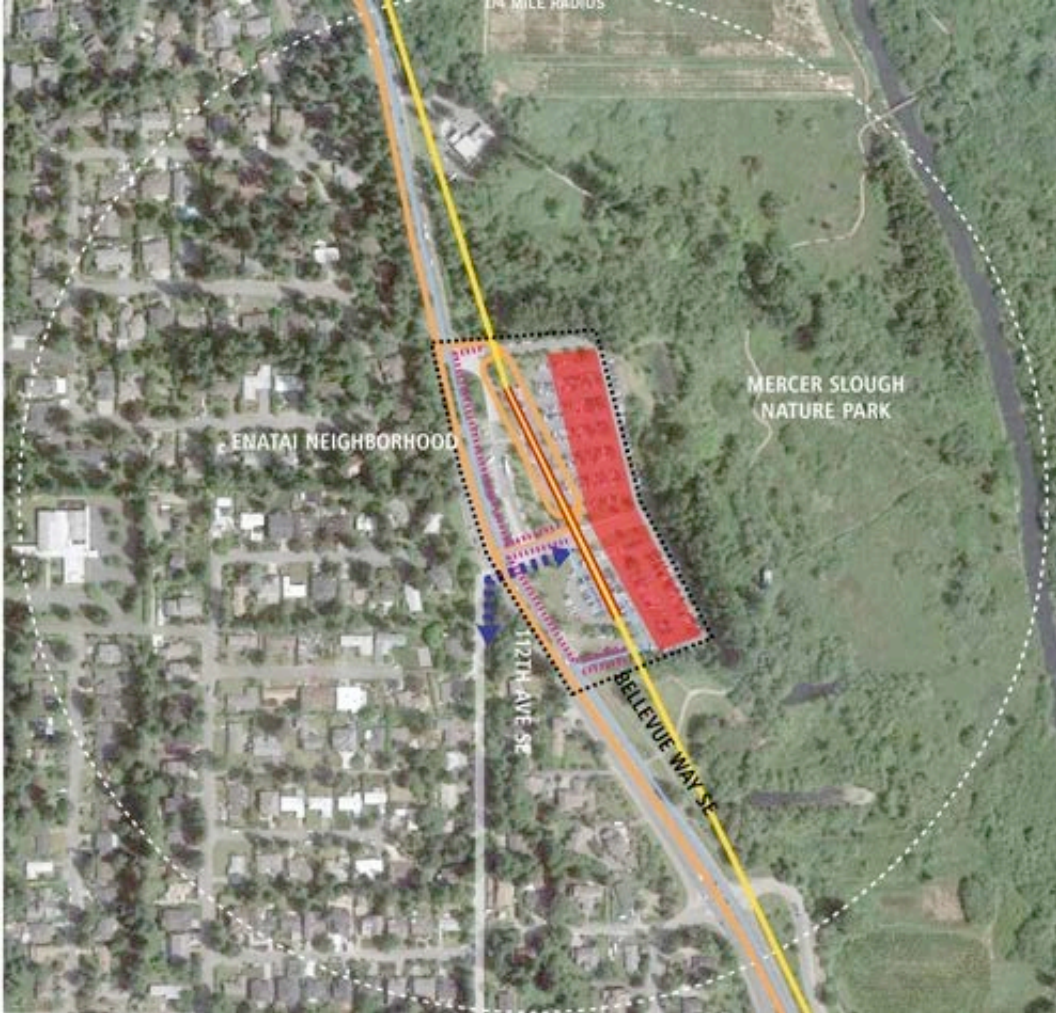
- Begin early residential acquisition process
- Bellefield Access Variation

- Update noise analysis, determine location and height of noise walls
- Arborist identifies significant trees
- Determine construction methods and schedule

A blue-tinted photograph of a Sound Transit train, viewed from a low angle. The train is moving towards the viewer, and the words "SOUND TRANSIT" are visible on the front window. The background is a clear blue sky. On the left side of the image, the text "STATION DESIGN OVERVIEW" is overlaid in a white, sans-serif font. Below this, the text "South Bellevue & East Main Stations" is also overlaid in a smaller white font.

STATION DESIGN OVERVIEW

South Bellevue & East Main Stations

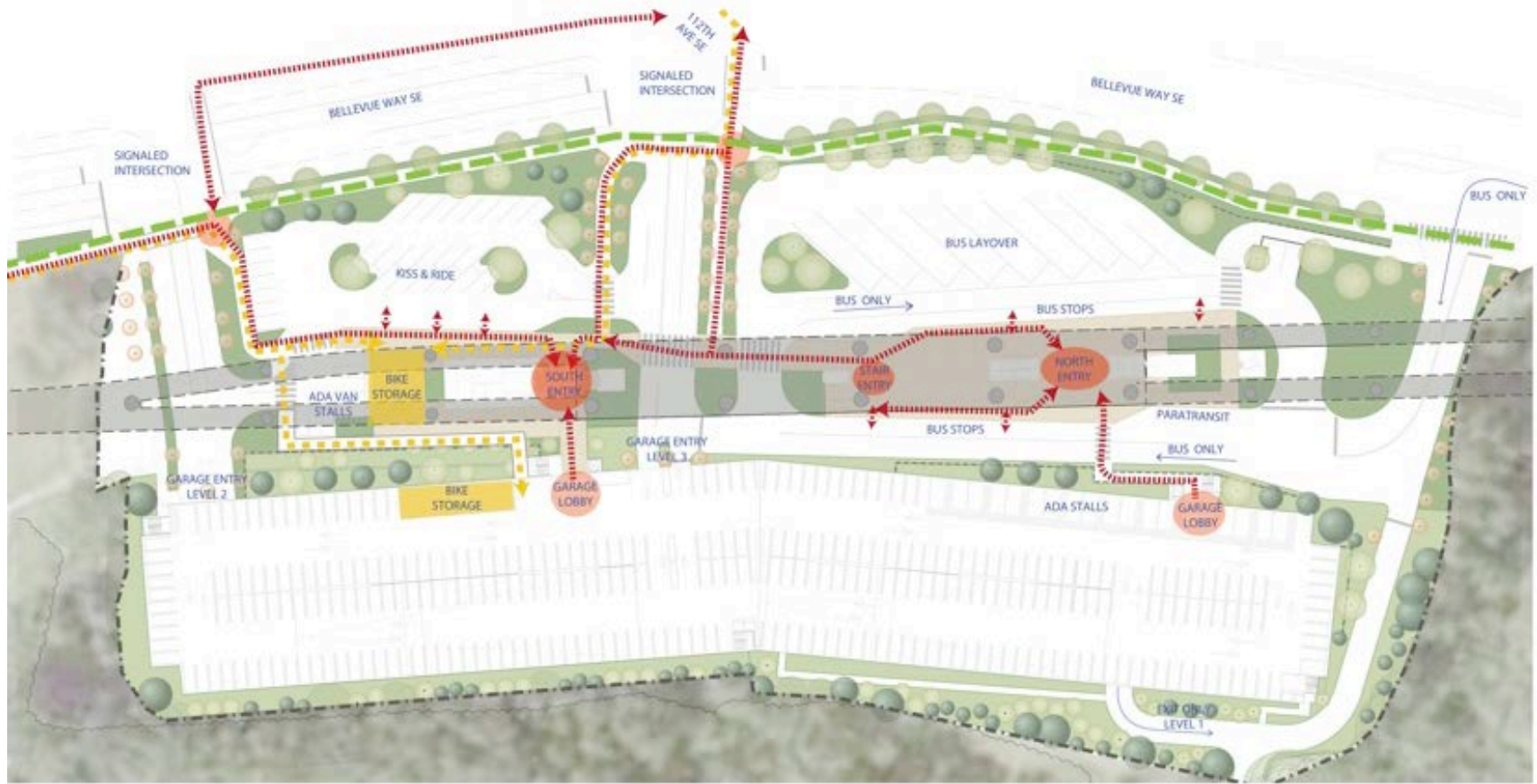


LEGEND

-  BUS ROUTE
-  BICYCLE ROUTE
-  NEIGHBORHOOD CONNECTION
-  PROPOSED NEW SIDEWALKS
-  LIGHT RAIL TRACK
-  STATION
-  PROPOSED NEW PARKING GARAGE
-  STATION SITE

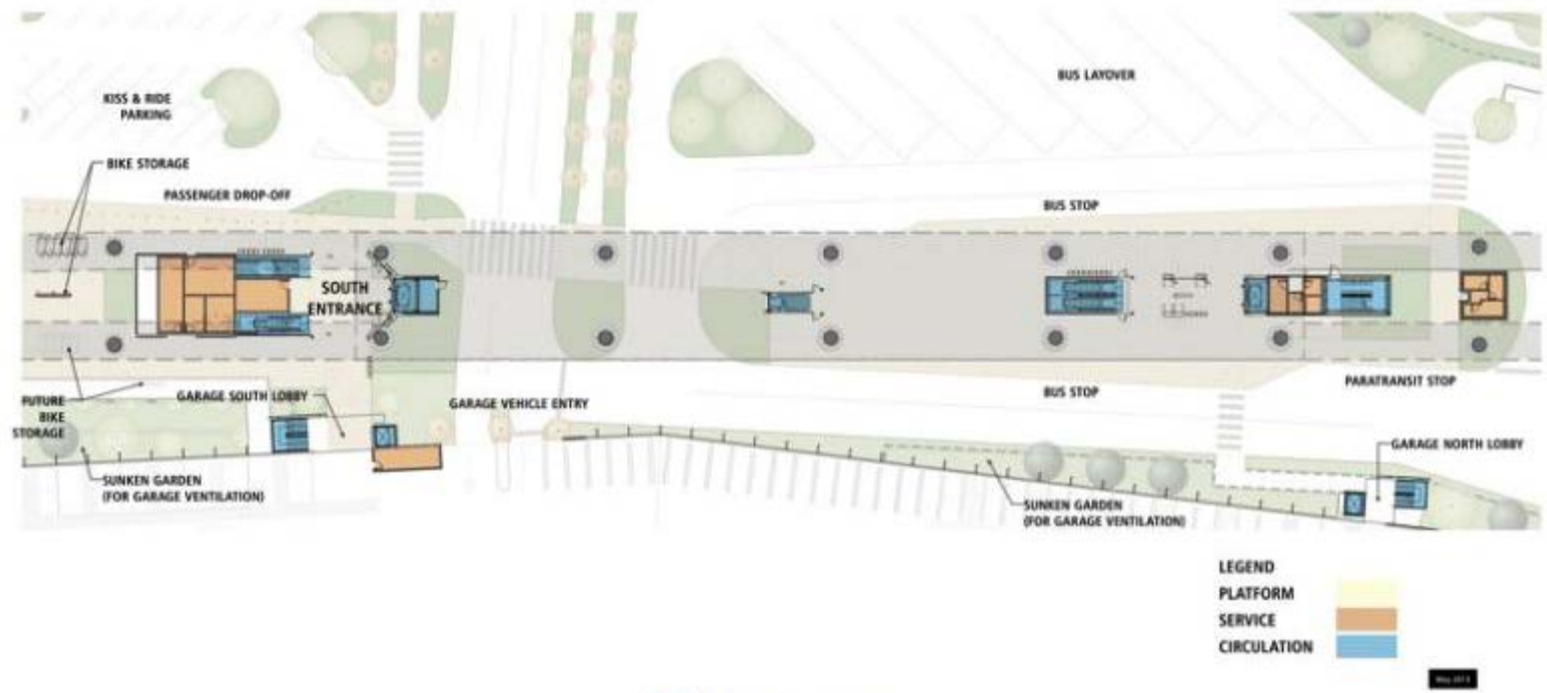
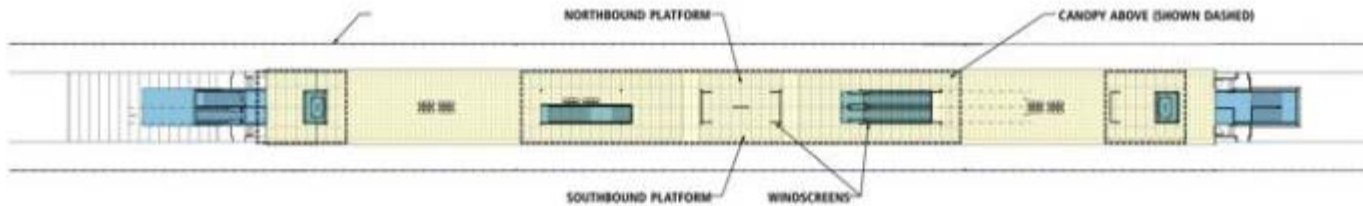


South Bellevue Station - Neighborhood context plan



← - - - - - → Bicycle Circulation
 ← - - - - - → Pedestrian Circulation
 - - - - - Bicycle and Pedestrian Trail

South Bellevue Station - Circulation diagram



South Bellevue Station - Platform and grade level plan



South Bellevue Station – View of station looking northeast



South Bellevue Station – South station entrance from kiss-and-ride



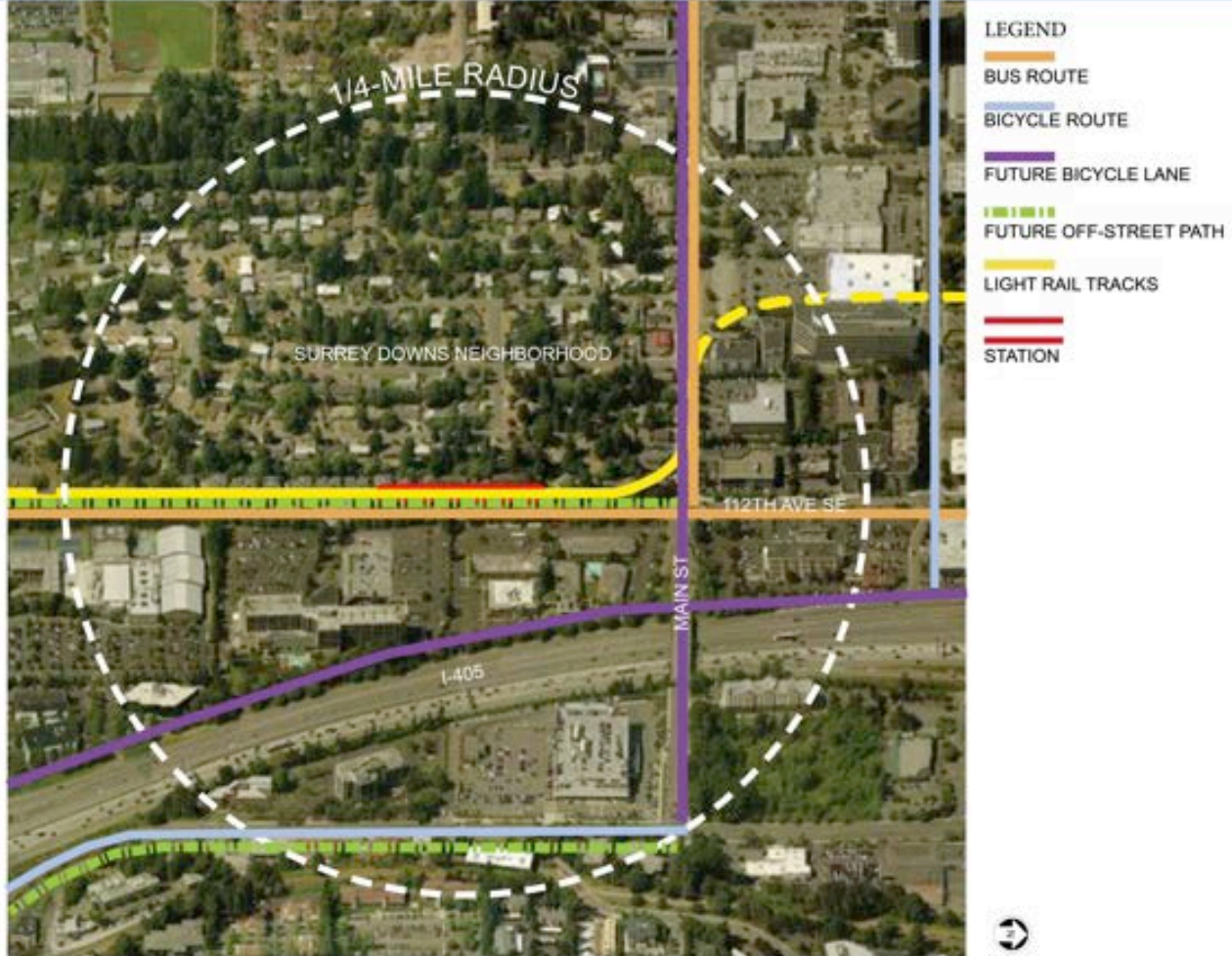
South Bellevue Station – Parking garage main entrance



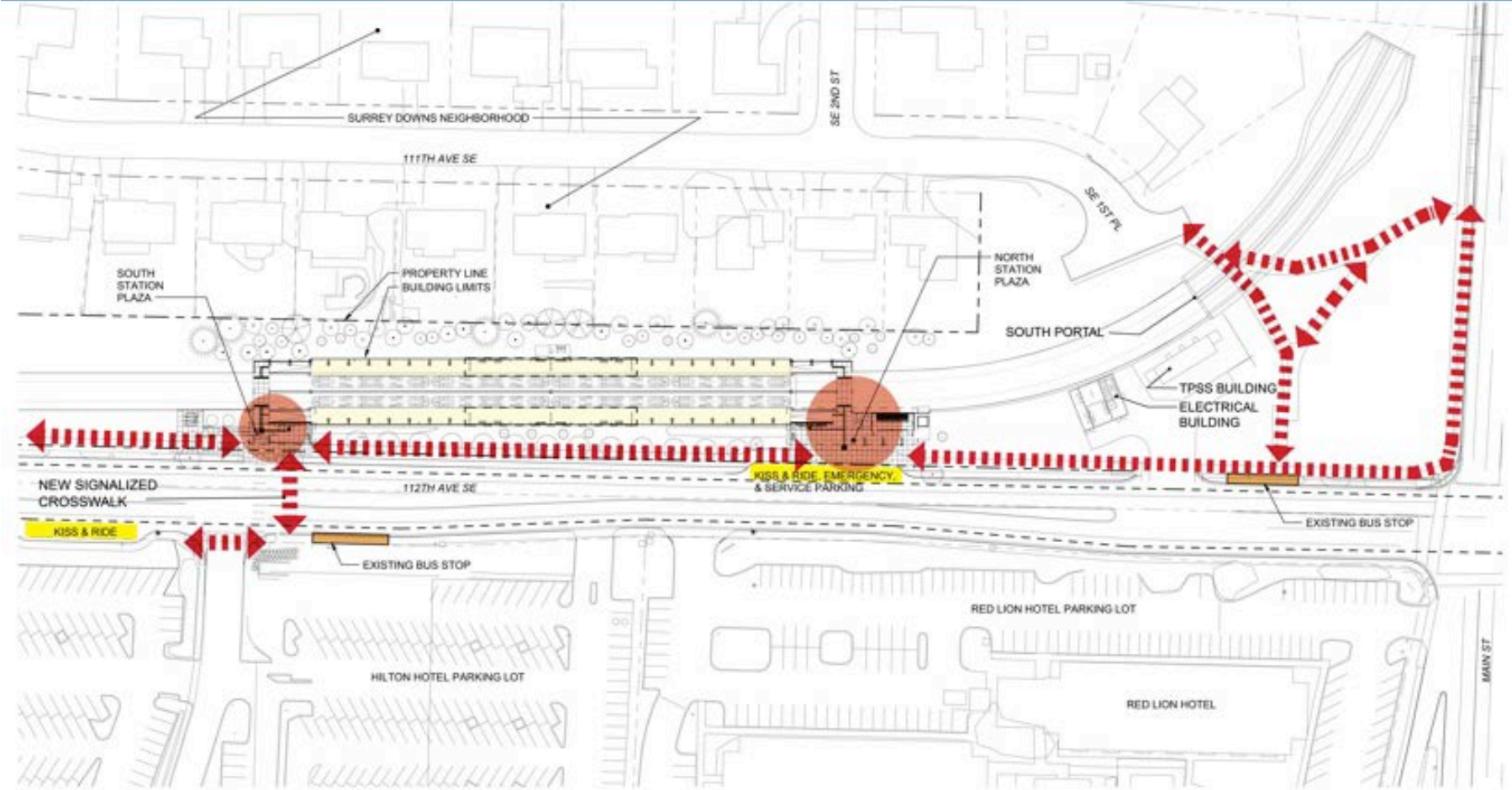
South Bellevue Station – Bus platform and north station entrance



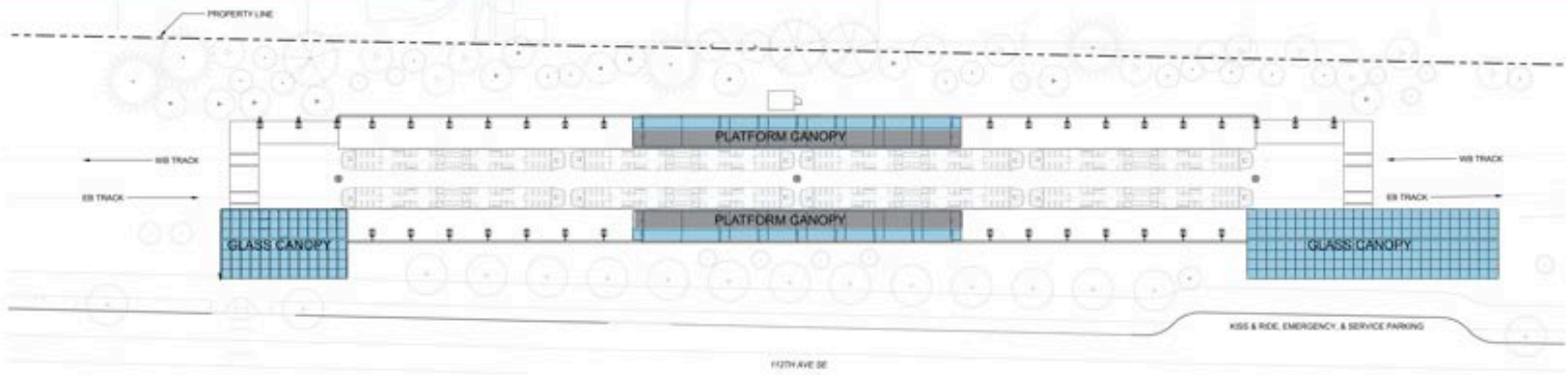
South Bellevue Station – Platform view looking north



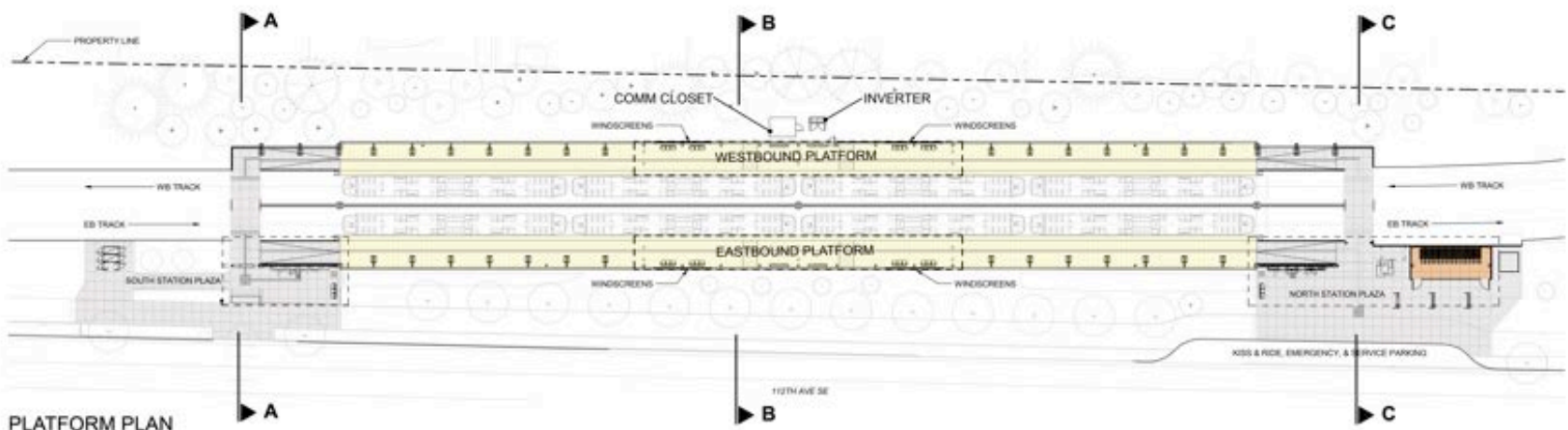
East Main Station – Neighborhood context plan



East Main Station area plan

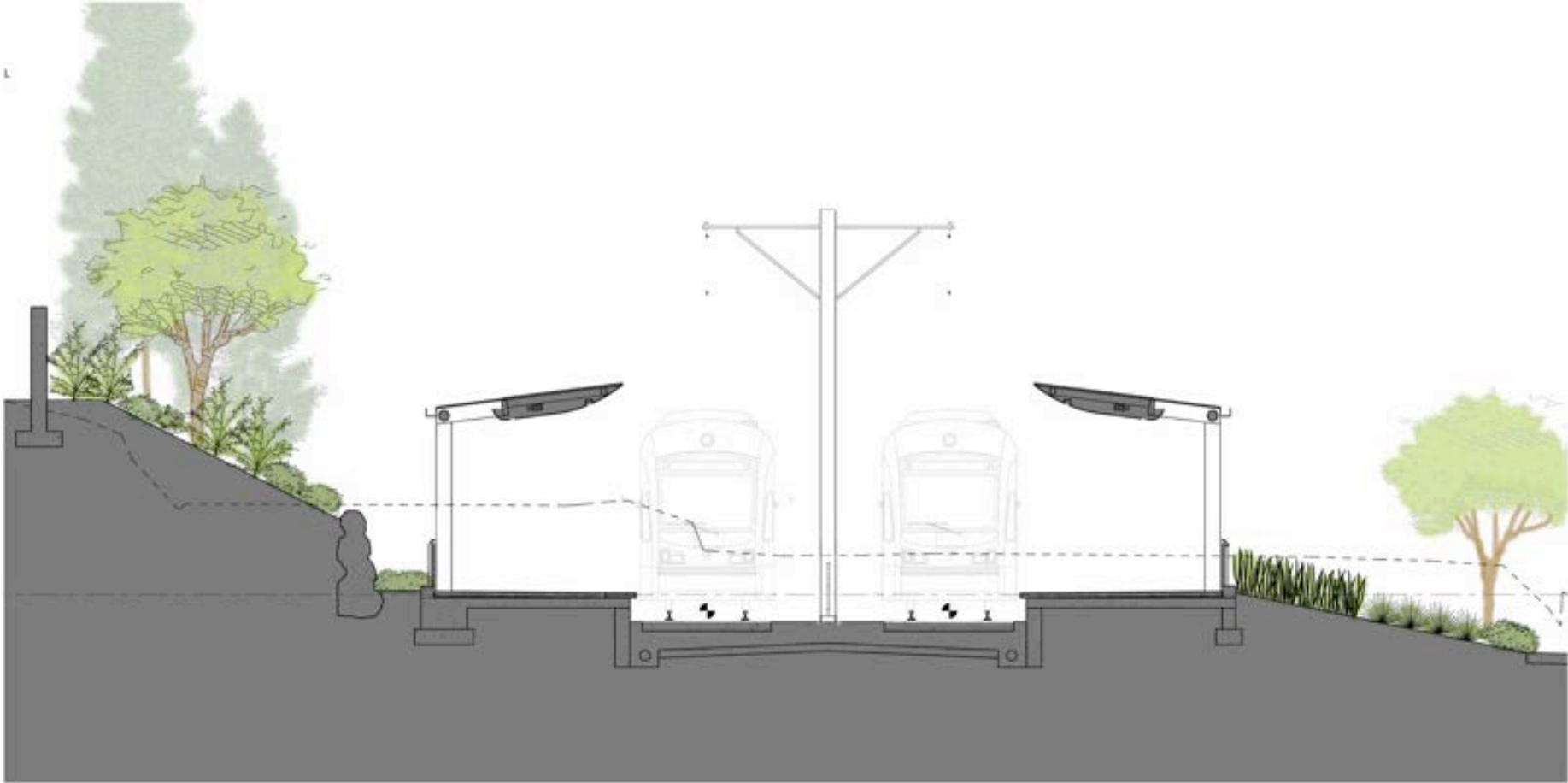


ROOF PLAN



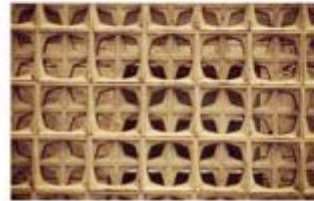
PLATFORM PLAN

East Main Station – Roof and platform plans



SECTION B-B

East Main Station – Platform section looking north (mid-platform)



East Main Station – Architectural context



East Main Station – South plaza looking west



East Main Station – North plaza looking west



East Main Station – Platform view looking north

Station Naming Process



Permanent station names

- Reflect the nature of the community and environment
- Succinct and easy to read
- Comply with federal Americans with Disabilities Act guidelines and limited to 30 characters
- Avoid commercial references
- Avoid similar names or words in existing facilities



Comment on station names tonight!

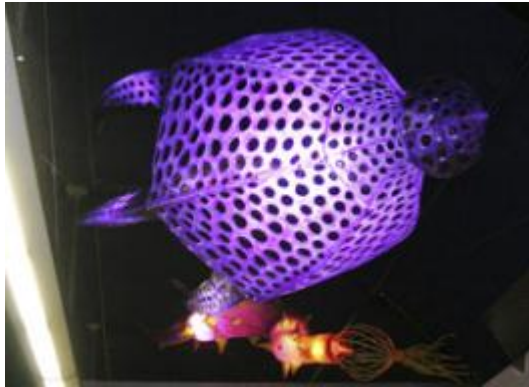
STart

Sound Transit's Integrated Art Program



Start on LINK

Sound Transit Art Program



Next steps

- Continue coordination with local jurisdictions and the public
- Station naming outreach
- Select station artists
- Advance design to 60% milestone

Next East Link meeting:

- Mercer Island, June 6
- 5 – 7pm, Mercer Island Community & Event Center

We want to hear from you!

- Sound Transit Community Outreach staff is accessible by phone, email, and is available to meet in person
- Contact Community Outreach staff: eastlink@soundtransit.org or 206-398-5470
- Attend final design community meetings
- Sign-up to receive email updates: www.soundtransit.org/subscribe
- Visit the project website: www.soundtransit.org/eastlink

Questions?

