

TABLE G3-1
Hazardous Materials Databases Searched and Number of Sites Identified within 600 feet of Each Segment

Database	Abbreviation	Definition	Segment				
			A	B	C	D	E
National Priorities List	NPL	Hazardous waste sites for priority cleanup under the federal Superfund Program (a subset of CERCLIS)	0	0	0	0	0
Comprehensive Environmental Response, Compensation, and Liability Information System	CERCLIS	Data on potentially hazardous waste sites that have been reported to EPA.	0	0	0	0	0
CERCLIS – No Further Remedial Action Planned	CERCLIS-NFRAP	Sites removed from CERCLIS where no contamination was found or where contamination was removed quickly.	0	1	0	1	0
RCRA Corrective Action Sites	RCRA-CORRACTS	RCRA-CORRACTS identify hazardous waste handlers with corrective action (cleanup) activity.	0	0	0	0	0
Resource Conservation and Recovery Information System	RCRA-TSD	Sites that generate, transport, store, treat, and/or dispose of hazardous waste.	0	0	0	0	0
RCRA large-quantity generators	RCRA-LQG	RCRA-LQG includes facilities that generate more than 1,000 kilograms (kg) of hazardous waste or more than 1 kg of acutely hazardous waste per month.	1	0	2	1	5
RCRA small-quantity generators	RCRA-SQG	RCRA-SQG are facilities that generate between 100 kg and 1,000 kg of hazardous waste per month. Generators do not store, treat, or dispose hazardous waste. Hazardous waste generation indicates commercial or industrial activity that stores and uses hazardous materials.	44	6	50	106	46
Emergency Response Notification System	ERNS	ERNS records and stores information on reported releases of oil and hazardous substances.	3	2	2	3	0
Brownfields Sites Listing	BROWNFIELDS	EPA's listing of brownfields properties addressed by Cooperative Agreement Recipients and brownfields properties addressed by Targeted Brownfields Assessments.	1	1	1	0	1
Toxic Chemical Release Inventory System	TRIS	TRIS identifies facilities that release toxic chemicals to the air, water, and land in reportable quantities under SARA Title III, Section 313.	0	0	0	0	0
FIFRA/ TSCA Tracking System – FIFRA (Federal Insecticide, Fungicide, and Rodenticide Act)/TSCA (Toxic Substances Control Act)	FTTS	FTTS tracks administrative cases and pesticide enforcement actions and compliance activities related to FIFRA, TSCA, and the Emergency Planning and Community Right-to-Know Act (EPCRA) over the previous 5 years.	1	0	3	3	0

TABLE G3-1
Hazardous Materials Databases Searched and Number of Sites Identified within 600 feet of Each Segment

Database	Abbreviation	Definition	Segment				
			A	B	C	D	E
State Confirmed or Suspected Contaminated Sites List	HWS	State equivalent to CERCLIS. Ecology records indicate sites with confirmed or suspected presence of contaminated soil, groundwater, surface water, sediment, or air.	9	2	11	5	5
State Hazardous Sites List/ Model Toxics Control Act (MTCA) Cleanup Program Sites Register	HSL	Contaminated sites that have been assessed and ranked using the Washington State Ranking Method. HSL is a subset of the CSCSL.	0	0	0	0	0
Confirmed and Contaminated Sites – No Further Action	CSCSL NFA	The data set contains information about sites previously on the Confirmed and Suspected Contaminated Sites list that have received a No Further Action (NFA) determination. Because it is necessary to maintain historical records of sites that have been investigated and cleaned up, sites are not deleted from the database when cleanup activities are completed. Instead, an NFA code is entered based upon the type of NFA determination the site received.	6	1	10	8	8
State Landfill or Solid Waste Site Lists	LF	Inventory of state solid waste disposal facilities or landfills.	2	1	1	1	0
State Leaking Underground Storage Tank List	LUST	Reported leaking underground storage tank (LUST) incidents.	23	7	19	19	5
State Registered Underground Storage Tank List	UST	Registered underground storage tanks (USTs). Registration is not required for residential heating oil USTs.	39	11	35	48	19
Reported Spills	SPILLS	These may be active or inactive facilities or open dumps that failed to meet RCRA Subtitle D Section 4004 criteria for solid waste landfills or disposal sites.	7	4	11	7	8
Sites with Institutional Controls	INST CONTROL	Sites that have institutional controls.	0	0	2	0	0
Voluntary Cleanup Program Sites	VCP	Sites that have entered either the VCP or its predecessor Independent Remedial Action Program.	9	0	15	7	7
State Independent Cleanup Reports List	ICR	Cleanup action reports received by Ecology for review and approval. Cleanup actions are done without Ecology oversight.	20	5	27	24	7
Dry Cleaner List	DRYCLEANERS	A listing of registered drycleaners who registered with Ecology (using the Standard Industrial Classification [SIC] code of 7215 and 7216) as hazardous waste generators.	1	0	1	0	0
Water Quality Permit System Data	NPDES	A listing of permitted wastewater facilities.	2	2	7	4	1
Inactive Dry Cleaners	INACTIVE DRYCLEANERS	A listing of inactive dry cleaner facility locations.	0	0	4	5	1

TABLE G3-2
Hazardous Materials Sites Identified

EDR Map Label ID	Risk Ranking ^a	Site Name	Address	Database
394	4	TRUCK CENTER CORP	600 5TH AVENUE S	FINDS, RCRIS-SQG
405A	4	5TH AND THOMAS STREETS	5TH AND THOMAS STREETS	ERNS
405B	4	5TH AND VIRGINIA ST	5TH AND VIRGINIA STREET	ERNS
408	3	GOODWILL INDUSTRIES	1400 S LANE STREET	FINDS, LF, RCRIS-SQG, SPILLS, UST
409A	4	LC JERGENS PAINTING COMPANY	900 RAINIER AVENUE S	FINDS, RCRIS-SQG
409B	3	RECYCLING DEPOT, INC.	851 RAINIER AVENUE S	FINDS, LF, NPDES
409C	3	TEXACO 632320271	852 RAINIER AVENUE S	FINDS, ICR, LUST, MANIFEST, RCRIS-SQG, UST,
410	4	SEATTLE CITY AIRPORT WAY BRIDGE	830 4TH AVENUE S	FINDS, RCRIS-SQG
415A	4	POPICH SIGN COMPANY	831 AIRPORT WAY S	FINDS, RCRIS-SQG
415B	3	UWAGIMAYA VILLAGE	514 DEARBORN STREET	CSCSL NFA, FINDS, ICR, UST, VCP
415C	3	SHELL #64819/TEXACO #632320366	511 S DEARBORN STREET	FINDS, ICR, LUST, MANIFEST, RCRIS-SQG, UST,
415D	4	IMMIGRATION NATIONAL SERVICE	815 AIRPORT WAY	FINDS, RCRIS-SQG, UST
416	4	SQUARE D COMPANY	830 CORWIN PLACE S	FINDS, RCRIS-SQG
417	4	AT&T WIRELESS DEARBORN	1200 S DEARBORN STREET	FINDS
419	3	HERZOG GLASS, INC.	1300 S DEARBORN STREET	FINDS, ICR, LUST, UST
420	3	PACIFIC FISH COMPANY	617 S DEARBORN STREET	FINDS, LUST, UST
422A	4	COLORGRAPHICS, INC.	1421 S DEAN STREET	FINDS, MANIFEST, NPDES, RCRIS-SQG
422B	3	RALPHS CONCRETE	800 POPLAR PLACE S	FINDS, HWS
422C	4	RALPHS CONCRETE PUMPING SEATTLE	816 POPLAR PLACE S	FINDS
422D	4	BAUGH CONST STORAGE YARD	826 POPLAR PLACE S	FINDS, RCRIS-SQG
422E	3	MODEL & INSTRUMENT DEVELOPMENT	836 POPLAR PLACE S	FINDS, ICR, RCRIS-SQG
422F	3	SIGNAL EQUIPMENT, INC.	838 POPLAR PLACE S	FINDS, HWS, ICR, LUST, UST, VCP
422G	3	MODEL & INSTRUMENT WORKS	861 POPLAR PLACE S	FINDS, LUST, RCRIS-SQG, UST
424	4	KIEWIT PACIFIC COMPANY	DEARBORNE & I5	FINDS, RCRIS-SQG
425	3	WA ST FOOTBALL SOCCER STADIUM & EXPO CEN	FORMER KINGDOME SITE	CSCSL NFA
427	3	WDOT CORWIN PLACE S	CORWIN PLACE S & I-90 NR DEARBORN	LUST, RCRIS-SQG
428	3	THE SALVATION ARMY A.R.C.	1000 4TH AVENUE S	FINDS, ICR, LUST, RCRIS-SQG, UST
429	3	CITY OF SEATTLE	805 S CHARLES STREET	FINDS, LUST, MANIFEST, RCRIS-SQG, SPILLS
430	3	SEATTLE CITY HEALTH DEPARTMENT	705 S CHARLES STREET	FINDS, ICR, LUST, RCRIS-SQG, UST
432A	3	UNKNOWN	630 S CHARLES STREET	SPILLS
432B	3	TRIANGLE PROPERTY	901 MAYNARD AVE S	FINDS, LUST, UST
436A	4	FRYE ART MUSUEM	1061 6TH AVENUE S	FINDS, ICIS
436B	4	POPICH SIGN COMPANY, INC.	1045 6TH AVENUE S	FINDS, MANIFEST, RCRIS-SQG
436C	4	JAMES G MURPHY COMPANY	1001 6TH AVENUE S	FINDS, RCRIS-SQG
436D	4	ALLIED BATTERY COMPANY, INC.	1031 6TH AVENUE S	FINDS, RCRIS-SQG
439A	4	SEATTLE CITY PUBLIC UTILITIES	707 S PLUMMER STREET	FINDS, RCRIS-SQG
439B	3	KEN STATION	1030 7TH AVENUE S	LUST, UST

TABLE G3-2
Hazardous Materials Sites Identified

EDR Map Label ID	Risk Ranking ^a	Site Name	Address	Database
440	4	SEATTLE CITY TRANSPORTATION DEPARTMENT	1010 8TH AVENUE S	FINDS, MANIFEST, RCRIS-SQG
442	4	BAUGH CONSTRUCTION COMPANY	900 POPLAR PLACE S	FINDS, UST
443	4	ROMAC INDUSTRIES, INC.	1064 4TH AVENUE S	FINDS, FTTS, RCRIS-LQG
445	3	ROMAINE ELECTRIC CORPORATION	1101 AIRPORT WAY S	CSCSL NFA, FINDS, ICR, RCRIS-SQG, UST, VCP
447	4	KINGDOM-SOUTH PARKING LOT	SEATTLE TIDE LANDS	UST
448A	4	SPENCER PRODUCTS COMPANY	1134 POPLAR PLACE S	FINDS, RCRIS-SQG
448B	3	WA DOT SEATTLE I90 TIME OIL	S NORMAN ST & POPLAR PLACE S	CSCSL NFA, FINDS, VCP
451A	4	MANUS DIRECT	1130 RAINIER AVENUE S	FINDS, RCRIS-SQG
451B	4	M&R INVESTMENTS	1121 RAINIER AVENUE S	FINDS, UST
456	4	ATKINSON DILLINGHAM	500 ROYAL BROUGHAM WAY	FINDS, RCRIS-SQG
457A	3	METRO KING CNTY DOT TRANSIT DIV RYERSON	1220 4TH AVENUE S	FINDS, ICR, LUST, MANIFEST, RCRIS-SQG, UST,
457B	4	SAYBOLT, INC.	1225 4TH AVENUE S, SUITE I	FINDS, RCRIS-SQG
457C	3	WA DOT	1213 4TH AVENUE S	FINDS, ICR, LUST, UST
459A	4	PRINCETON PACKAGING, INC.	1263 6TH AVENUE S	FINDS, RCRIS-SQG
459B	4	KING COUNTY METRO TRANSIT	1260 6TH AVENUE S	FINDS, RCRIS-SQG
459C	3	LEAVITT SHAY INDUSTRIAL BUILDING	1217 6TH AVENUE S	FINDS, ICR, LUST, UST
459D	4	LOWE PARKER CORPORATION	1234 6TH AVENUE S	FINDS, RCRIS-SQG
459E	4	WDOT	1205 6TH AVENUE S	UST
459F	4	E J BARTELLS	1212 6TH AVENUE S	FINDS, UST
460	3	TOYOSHIMA PROPERTY	1309 35TH AVENUE S	SPILLS
461	4	I-90 MERCER ISLAND LID	2101 72ND AVENUE SE	FINDS, UST
463	3	METRO CENTRAL OPERATING BASE	1333 AIRPORT WAY S	FINDS, HWS
465	3	2040 FABAN DRIVE	2040 FABAN DRIVE	SPILLS
466	3	NORTH MERCER PUMP STATION	7631 SE 22ND STREET	FINDS, LUST, UST
467	4	GUY F ATKINSON CONSTRUCTION COMPANY	2721 S IRVING STREET	FINDS, UST
468	4	THURGOOD MARSHALL	2401 S IRVING STREET	FINDS
470	3	76TH / 22ND	76TH / 22ND	SPILLS
471	4	SEATTLE I-90 TUNNEL & L10	1411 YAKIMA AVENUE S	FINDS, UST
472A	4	WA DOT CONTRACTORS WORK AREA SEATTLE	1360 LAKESIDE AVENUE S	FINDS, RCRIS-SQG
472B	3	1318 LAKESIDE AVE S	1318 LAKESIDE AVENUE S	CSCSL NFA, VCP
479A	3	WDOT BRADNER PLACE APARTMENTS	1366 31ST AVENUE S	ICR, LUST, UST
479B	3	TEXACO DOWNSTREAM 211558	1366 31ST AVENUE S	FINDS, HWS, MANIFEST, RCRIS-SQG, VCP
482	3	WDOT I-90/RAINIER AVE	I-90 / RAINIER AVENUE S	LUST, UST
484	3	WSDOT I-90	LACEY MURROW BRIDGE	ICR
489	4	23RD ATLANTIC CHEMICAL	23RD S & S ATLANTIC STREET	FINDS, RCRIS-SQG
491	3	SWANSON PROPERTY	1526 21ST AVENUE S	FINDS, HWS
492	4	MERCER ISLAND TOLL PLAZA SITE	I 90 EAST END LACEY MURROW BRIDGE	UST

TABLE G3-2
Hazardous Materials Sites Identified

EDR Map Label ID	Risk Ranking ^a	Site Name	Address	Database
493	4	WA DOT MERCER IS 60TH AVE SE	60TH AVENUE SE UNDER I90	FINDS, RCRIS-SQG
494A	4	TRUGREEN LP	2441 76TH AVENUE SE	FINDS, RCRIS-SQG
494B	3	PACIFIC FIRST BANK	2476 76TH AVENUE SE	ICR
494C	3	CONOCOPHILLIPS 30663	2411 76TH STREET SE	FINDS, ICR, LUST, MANIFEST, RCRIS-SQG, UST,
495A	3	RALPHS CONCRETE PUMPING	1517 RAINIER AVENUE S	BROWNFIELDS, FINDS, HWS, SPILLS
495B	4	VALLEY GEAR AND TRANSMISSION	1543 RAINIER AVENUE S	ERNS, FINDS, UST
510	3	TEXACO 632320494	7655 SUNSET HIGHWAY	FINDS, ICR, LUST, MANIFEST, RCRIS-SQG, UST,
512	3	CHEVRON 92736	7725 SUNSET HIGHWAY	FINDS, HWS, ICR, LUST, MANIFEST, RCRIS-SQG, UST, VCP
520A	3	FOUR SEASONS DRY CLEANERS MERCER ISLAND	7800 SE 27TH AVENUE	DRYCLEANERS, FINDS, HWS
520B	3	I & M ASSOCIATES	7810 SE 27TH AVENUE	FINDS, ICR, LUST, UST
533	4	MERCER ISLAND SERVICE CENTER, INC.	2728 80TH AVENUE SE	FINDS, UST
539A	4	UNOCAL 5097	2831 ISLAND CREST WAY	FINDS, UST
539B	3	CHEVRON 93659	2800 ISLAND CREST WAY	CSCSL NFA, FINDS, UST, VCP
553	4	COVENANT SHORES	9150 N MERCER WAY	FINDS, RCRIS-SQG
559	4	SHOREWOOD HEIGHTS APARTMENTS	3209 SHOREWOOD DRIVE	FINDS, RCRIS-SQG, UST
567A	4	AT&T WIRELESS EAST CHANNEL	9655 SE 36TH STREET, SUITE 207	FINDS
567B	3	HONEYWELL	9555 SE 36TH STREET	FINDS, HWS, VCP
567C	3	MERCER ISLAND CITY	9601 SE 36TH STREET	FINDS, ICR, LUST, MANIFEST, RCRIS-SQG, UST,
569	4	MERCER WAY DRUM	I90 E MERCER WAY ONRAMP EASTBOUND	FINDS, RCRIS-SQG
325B	4	SURRYDOWNS CHILDRENS CENTER	609 112TH AVENUE SE	FINDS
326	3	VALUE VILLAGE	11400 SE 6TH STREET, SUITE 220	LF
328	3	BELLEVUE CITY FIRE DISTRICT #7	11900 SE 8TH STREET	FINDS, ICR, LUST, UST
330	4	BELLEVUE CITY FIRE STATION #1	766 BELLEVUE WAY SE	FINDS, RCRIS-SQG, UST
335	4	BELLEVUE SQUARE MANAGERS BSM	727 104TH AVENUE NE	FINDS, MANIFEST, RCRIS-SQG
343A	1	EASTSIDE DISPOSAL	969 118TH AVENUE SE	FINDS, ICR, LUST, MANIFEST, NPDES, RCRIS-SQG, UST
343C	1	SOUND OIL COMPANY/DAVY TREE	1021 118TH AVENUE SE	FINDS, LUST, UST
351	4	AT&T BELLEFIELD	11400 SE 8TH STREET	FINDS
352	2	BELLEFIELD OFFICE PARK	11201 SE 8TH STREET	CERCLIS-NFRAP, FINDS
353	4	ADJACENT TO 1111 118 AVE SE	ADJACENT TO 1111 118 AVENUE SE	ERNS
366	4	AT&T WIRELESS MEYDENBAUER BAY	1212 104TH AVENUE SE	FINDS
412A	1	KEVIK CLEANERS	1614 BELLEVUE WAY SE	BROWNFIELDS, FINDS, HWS
412B	1	UNOCAL #4384	1624 BELLEVUE WAY SE	FINDS, HWS, ICR, LUST, RCRIS-SQG, UST
413	2	RICHARD S EVANS	1614 118TH AVENUE SE	FINDS, ICR, LUST, UST
431	2	BARNEY & ALS CHEVRON SERVICE	1649 BELLEVUE WAY	FINDS, ICR, LUST, RCRIS-SQG, UST
444	4	DOOLITTLE CONSTRUCTION COMPANY, INC.	1900 118TH AVENUE SE	FINDS, UST
452	2	ATC VANCOM	2000 118TH AVENUE SE	CSCSL NFA, FINDS, LUST, MANIFEST, NPDES, RCRIS-SQG, UST
469	4	MADDEN CONSTRUCTION, INC.	2200 118TH AVENUE SE	FINDS, UST
514	3	TREE SERVICE	2690 118TH AVENUE NE	SPILLS

TABLE G3-2
Hazardous Materials Sites Identified

EDR Map Label ID	Risk Ranking ^a	Site Name	Address	Database
547	3	3100 BELLEVUE WAY SE	3100 BELLEVUE WAY SE	SPILLS
555	4	EVERGREEN SERVICES CORPORATION	12010 SE 32ND STREET	FINDS, UST
557	3	UNKNOWN	118TH / 32ND, 2 BLOCKS EAST OF LAKE CITY	SPILLS
562	4	3251 106 AVE SE(DOCK SO OF ADDRESS)	3251 106 AVENUE SE	ERNS
564	3	BOAT OWNER	10849 SE LAKE ROAD	SPILLS
202	4	WA UW EASTSIDE CLINIC	1700 116TH AVENUE NE	FINDS, FTTS, HWS, ICR, LUST, RCRIS-SQG, UST, VCP
208	4	CARLSEN HISTOPATH	1515 116TH AVENUE NE, SUITE 300	FINDS
230	4	EASTSIDE MEDICAL LAB BELLEVUE	1199 116TH AVENUE NE	HAZNET
236	4	OVERLAKE MEDICAL TOWER LLC	1135 116TH AVENUE NE	FINDS, RCRIS-SQG
245A	3	USF REDDAWAY TRUCKING	1034 116TH AVENUE NE	FINDS, UST
245B	2	APPLEGREEN CENTER	1024 116TH AVENUE NE	SPILLS
245C	3	OVERLAKE HOSPITAL MEDICAL CENTER	1035 116TH AVENUE NE	FINDS, ICR, LUST, UST
248	4	BELLEVUE HINES DEVELOPMENT LLC	1110 112TH AVENUE NE, SUITE 130	FINDS, FTTS, LUST, MANIFEST, NPDES, RCRIS-SQG, UST
254A	3	2 LAKE BELLEVUE DRIVE	2 LAKE BELLEVUE DRIVE	FINDS, RCRIS-SQG
254B	3	UNKNOWN	1 LAKE BELLEVUE DRIVE	SPILLS
255	4	GROUP HEALTH COOPERATIVE	925 116TH AVENUE NE	SPILLS
257	4	PACIFIC REGENT CONDOMINIUM ASSOCIATIONS	919 109TH AVENUE NE	NPDES
260	4	TRANSITION PROGRAM	833 108TH AVENUE NE	FINDS, UST
262	4	NORTHWEST RAINIER A WASHINGTON GEN'L	12400 SE 38TH STREET/P.O. BOX 5727	FINDS
263A	2	UNOCAL #4511	10605 NE 8TH STREET	UST
263B	4	PACCAR BUILDING	777 106TH AVENUE NE	FINDS, ICR, LUST, RCRIS-SQG, UST
263C	1	FORMER THINKER TOYS	10610 NE 8TH STREET	FINDS, RCRIS-SQG
263D	4	WASHINGTON SQUARE RESIDENTIAL CONDO	10620 NE 8TH STREET	FINDS, HWS, MANIFEST
265	4	BRAVERN	11055 NE 8TH STREET	NPDES
267A	4	HC AUTO CARE, INC.	11807 & 11817 NE 8TH STREET	NPDES
267B	2	EASTSIDE RENTAL & EQUIPMENT	11830 NE 8TH STREET	FINDS, RCRIS-SQG
267C	2	DOLLAR RENT A CAR (TWO REPORTS)	11839 NE 8TH STREET	FINDS, HWS, ICR, LUST, RCRIS-SQG, UST, VCP
267D	2	TIKI CAR WASH	11909 NE 8TH STREET	FINDS, ICR, LUST, UST
267E	2	BAKKER'S FINE DRY CLEANING, INC.	11855 NE 8TH STREET	FINANCIAL ASSURANCE, FINDS, HWS, ICR, INST CONTROL, LUST
267F	4	BELLEVUE ALFA ROMEO	11919 NE 8TH STREET	FINDS, LUST, UST
267G	4	OLYMPIC CLEANERS	800 118TH AVENUE NE	FINDS, RCRIS-SQG
267H	2	TEXACO STAR MART #3611	12001 NE 8TH STREET	FINDS, INACTIVE DRYCLEANERS, RCRIS-SQG
267I	4	ACCUTRAN TRANSMISSIONS, INC.	11811 NE 8TH STREET	ERNS, FINDS, ICR, LUST, MANIFEST, RCRIS-SQG, SPILLS, UST
268A	2	THE WAGON SHOP	11635 NE 8TH STREET	FINDS, UST
268B	2	CHEVRON USA, INC.	11606 NE 8TH STREET	LF
268C	2	ARCO #0836	11611 NE 8TH STREET	CSCSL NFA, FINDS, ICR, MANIFEST, RCRIS-SQG, UST, VCP
269	4	RAINIER PLAZA BELLEVUE	777 108TH AVENUE NE, SUITE 2050	FINDS, ICR, LUST, MANIFEST, RCRIS-SQG, SPILLS, UST

TABLE G3-2
Hazardous Materials Sites Identified

EDR Map Label ID	Risk Ranking ^a	Site Name	Address	Database
271	2	BELLEVUE SQUARE MANAGERS	731 BELLEVUE WAY NE	FINDS, RCRIS-SQG
273	3	PUGET POWER & LIGHT COMPANY ELECTRICAL SWITCH	700 108TH AVENUE NE	ICR, UST
275	2	TEXACO	615 112TH AVENUE NE	ICR
276	2	DITTY PROPERTY	604 BELLEVUE WAY NE	FINDS, ICR, LUST, RCRIS-SQG, UST
277	3	KC METRO TRANSIT	NE 6TH STREET / 108TH AVENUE NE	FINDS, ICR, UST, VCP
278A	4	AGFA GEVAERT, INC.	555 116TH AVENUE NE	SPILLS
278B	4	PUGET SOUND POWER & LIGHT COMPANY	600 116TH AVENUE NE	FINDS, RCRIS-SQG
278C	4	EXOTIC MOTORS AUTO REBUILD, INC.	638 116TH AVENUE NE	FINDS, RCRIS-SQG
278D	4	DEALERS CHOICE AUTOMOTIVE, INC.	638 B 116TH AVENUE NE	FINDS, MANIFEST, RCRIS-SQG
278E	4	EXOTIC MOTORS DBA BELLEVUE ISUZU	614 116TH AVENUE NE	FINDS, RCRIS-SQG
278F	2	BELLEVUE PONTIAC GMC TRUCK	620 116TH AVENUE NE	FINDS, RCRIS-SQG
279	4	MUTUAL MATERIALS COMPANY	605 119TH AVENUE NE	CSCSL NFA, FINDS, ICR, RCRIS-SQG, UST, VCP
281A	4	SHELL OIL COMPANY	510 BELLEVUE WAY NE	FINDS, RCRIS-SQG
281B	2	BELLEVUE ART MUSEUM	510 BELLEVUE WAY NE	FINDS, RCRIS-SQG
281C	2	MARSTON ENTERPRISES, INC.	510 BELLEVUE WAY NE	ICR
282	4	AGFA DIV BAYER CORPORATION	505 106TH AVENUE NE	LUST, UST
283	4	CITY CENTER BELLEVUE	500 108TH AVENUE NE, SUITE 1620	FINDS, RCRIS-SQG
284	4	RESIDENCE INN BY MARRIOTT	605 114TH AVENUE SE	FINDS, UST
285	2	QWEST CORPORATION (W00621)	450 110TH AVENUE NE	NPDES
287A	4	BARTELLS 13	424 BELLEVUE WAY NE	CSCSL NFA, FINDS, MANIFEST, RCRIS-SQG, UST, VCP
287B	4	BON MARCHE BELLEVUE	400 BELLEVUE SQUARE	FINDS, RCRIS-SQG
287C	2	J. C. PENNEY COMPANY, INC. #2109-7	300 BELLEVUE SQUARE	FINDS, RCRIS-SQG
288	2	PSE GENERAL OFFICE	10608 NE 4TH STREET	LUST, UST
289	3	CITY OF BELLEVUE?	112TH AVENUE NE / NE 4TH STREET	SPILLS
290A	4	AT&T BELLEVUE DOWNTOWN	10655 NE 4TH STREET	FINDS
290B	3	FEDERAL EXPRESS	10655 NE 4TH STREET	SPILLS
291A	4	BELLEVUE ALFA ROMEO	225 105TH AVENUE NE	FINDS, RCRIS-SQG
291B	4	TRIAD SVCS AKA TRIAD PRESS, INC.	224 105TH AVENUE NE	FINDS, RCRIS-SQG
291C	2	TOWN & COUNTRY CLEANERS	310 105TH AVENUE NE	CSCSL NFA, FINDS, ICR, INACTIVE DRYCLEANERS, RCRIS-SQG
291D	4	FOSSUM PAINT CENTER	345 106TH AVENUE NE	FINDS, UST
294A	4	AVALON MEYDENBAUER	250 BELLEVUE WAY NE	NPDES
294B	4	BELLEVUE PROPERTIES	298 BELLEVUE WAY NE	FINDS, MANIFEST, RCRIS-SQG, UST
294C	1	CAPRI PROPERTY	315 BELLEVUE WAY NE	FINDS, HWS, MANIFEST, RCRIS-SQG
294D	4	ALVIN GOLDFARB JEWELERS	305 BELLEVUE WAY NE	FINDS
294E	2	MERCEDES SPECIALIST PROPERTY	340 BELLEVUE WAY	LUST, UST
295A	4	SUMMIT BUILDING	320 108TH AVENUE NE	FINDS, RCRIS-SQG
295B	2	E & H PROPERTIES	327 108TH AVENUE NE	CSCSL NFA, FINDS, ICR, INST CONTROL, UST, VCP

TABLE G3-2
Hazardous Materials Sites Identified

EDR Map Label ID	Risk Ranking ^a	Site Name	Address	Database
297A	3	211 112TH AVENUE NE	211 112TH AVENUE NE	SPILLS
297B	4	ENVIROS CORPORATION	225 112TH AVENUE NE	FINDS, RCRIS-SQG
298A	2	BELLEVUE PACIFIC CENTER	166 106TH AVENUE NE	CSCSL NFA, FINDS
298B	4	JOHN L SCOTT REAL ESTATE BELLEVUE	188 106TH AVENUE NE #600	FINDS, FTTS
298C	3	TACO TIME PROPOSED	201 106TH AVENUE NE	CSCSL NFA, FINDS, ICR, VCP
299	4	BELLEVUE PARKS DEPT EASTSIDE C	225 102ND AVENUE NE	FINDS, RCRIS-SQG
301A	4	NORTHWEST COPY BELLEVUE	105 BELLEVUE WAY NE	FINDS, RCRIS-SQG
301B	1	BELLEVUE WAY DRY CLEANERS	103 BELLEVUE WAY NE, SUITE 4	BROWNFIELDS, DRYCLEANERS, FINDS, HWS, MANIFEST, RCRIS-LQG
302	3	BUDGET RENT A CAR	111 108TH AVENUE NE	CSCSL NFA, FINDS, ICR, UST, VCP
304A	3	10237 MAIN STREET	10237 MAIN STREET	CSCSL NFA, FINDS, VCP
304B	1	EV11 LLC	10335 MAIN STREET	HWS
304C	4	VANDER HOEK PARTNERSHIP	10246 MAIN STREET	FINDS, UST
304D	1	SAFEWAY PROPERTY	10301 MAIN STREET	FINDS, HWS, VCP
304E	3	BORGATA ASSOCIATES APARTMENTS	NE 1ST ST & 103RD AVENUE NE	CSCSL NFA, FINDS, VCP
304F	3	10245 MAIN STREET	10245 MAIN STREET	SPILLS
304G	4	SUPERIOR AUTOMOTIVE, INC.	17 1/2 102ND AVENUE NE	FINDS, RCRIS-SQG
304H	4	CHRISTMAS HOUSE	10220 NE 1ST PLACE	FINDS, RCRIS-SQG, UST
305A	4	BELLEVUE WAY MAIN S	15 BELLEVUE WAY SE	FINDS, RCRIS-SQG
305B	1	UNOCAL #0587	5 BELLEVUE WAY NE	FINDS, HWS, ICR, LUST, MANIFEST, RCRIS-SQG, UST, VCP
305C	4	ELWELL CASE	31 BELLEVUE WAY	FINDS, RCRIS-SQG
305D	2	ERNST HOME CENTER BELLEVUE WAY	44 BELLEVUE WAY NE	FINDS, ICR, LUST, UST
306A	2	CHEVRON 92581	10812 MAIN STREET	FINDS, ICR, LUST, UST
306B	4	PLATEAU GOLF LLC	10838 MAIN STREET	FINDS
306C	1	BENENSON CAPITAL	110 108TH AVENUE NE	FINDS, HWS, ICR, RCRIS-LQG, VCP
308A	4	MYERS QUALI QUIK, INC.	10622 MAIN STREET	FINDS, RCRIS-SQG
308B	3	BUDGET RENT A TRUCK	10708 MAIN STREET	LUST
308C	4	MICHAELS FINE DRY CLEANING	10711 MAIN STREET	FINDS, INACTIVE DRYCLEANERS, RCRIS-SQG
309A	4	JIFFY LUBE STORE 1109	10510 MAIN STREET	FINDS, RCRIS-SQG
309B	4	PRESTIGE STATIONS 733	10530 MAIN STREET	FINDS, UST
310	3	PUGET SOUND ENERGY	11030 MAIN STREET	SPILLS
311A	1	WESTMARK FINANCIAL SERVICES	11121 MAIN STREET	ICR
311B	4	LEXUS OF BELLEVUE	11058 MAIN STREET	FINDS, MANIFEST, RCRIS-SQG
315	4	AT&T WIRELESS OLD TOWN	136 102ND AVENUE SE	FINDS
316	4	MICHALES CLEANERS	10711 MAIN STREET	ERNS
317A	4	ARTHURS FINE DRYCLEANERS	102 BELLEVUE WAY SE	FINDS, INACTIVE DRYCLEANERS, RCRIS-SQG
317B	3	GOODYEAR AUTO SERVICE CENTER	117 BELLEVUE WAY SE	FINDS, HWS, ICR, RCRIS-SQG, UST, VCP
319	3	GRACE RENTAL - RESIDENTIAL	324 105TH AVENUE SE	ICR
320A	4	BELLEVUE RENTALS, INC.	326 116TH AVENUE SE	FINDS
320B	4	BODYWORKS AUTO REBUILD	330 116TH AVENUE SE	FINDS, RCRIS-SQG

TABLE G3-2
Hazardous Materials Sites Identified

EDR Map Label ID	Risk Ranking ^a	Site Name	Address	Database
321	4	BELLEVUE SCHOOL DISTRICT, BELLEVUE HIGH SCHOOL	10416 SE KILMARNOCK	FINDS, MANIFEST, RCRIS-SQG
322	2	BELLEVUE RED LION	300 112TH AVENUE SE	FINDS, ICR, LUST, RCRIS-SQG, UST
323	4	FV NORTHERN AURORA	410 BELLEVUE WAY SE	NPDES
325A	4	KING COUNTY DISTRICT COURT	585 112TH AVENUE SE	FINDS, ICIS, PADS
118	4	HN INTERNATIONAL	3825 154TH AVENUE NE	FINDS, RCRIS-SQG, UST
120	4	SERCEL INDUSTRIES CORPORATION	3661 154TH AVENUE NE	FINDS, RCRIS-SQG
124	4	EDDIE BAUER	3601 154TH AVENUE NE	UST
132	4	ECOVA CORPORATION	15555 NE 33RD STREET	FINDS, RCRIS-SQG
133A	4	ON SITE ENVIRONMENTAL, INC.	14924 NE 31ST CIRCLE	FINDS, RCRIS-SQG
133B	4	PUGET SOUND HOME THERAPEUTICS	14960 NE 31ST CIRCLE	FINDS, RCRIS-SQG
134A	4	PROCYTE CORPORATION	2893 152ND AVENUE NE	FINDS, RCRIS-SQG
134B	4	ON SITE ENVIRONMENTAL, INC.	2859 152ND AVENUE NE	FINDS, RCRIS-SQG
135	4	SEARS 8209	2803 152ND AVENUE NE	FINDS, MANIFEST, RCRIS-SQG
136A	4	CYNDI MARSH FINE CUS	2707 152ND AVENUE NE	FINDS, MANIFEST, RCRIS-SQG
136B	2	GROUP HEALTH EASTSIDE HOSPITAL	2700 152ND AVENUE NE	FINDS, LUST, MANIFEST, RCRIS-SQG, UST
136C	4	DATA COPY, INC.	2723 152ND AVENUE NE, BUILDING 6	FINDS, RCRIS-SQG
137	4	MARRIOTT FAIRFIELD INN	14595 NE 29TH PLACE	FINDS, RCRIS-SQG
138A	4	YETT MANAGEMENT NORTHWEST, INC.	2525 152ND AVENUE NE	FINDS, RCRIS-SQG
138B	4	HOME NUTRITIONAL SERVICES, INC.	2519 152ND AVENUE NE	FINDS, RCRIS-SQG
142	4	PROTOTRON CIRCUITS, INC.	2653 151ST PLACE NE	FINDS, RCRIS-SQG
146A	2	UNION 76 BELLEVUE	2421 148TH AVENUE NE	FINDS, ICR, LUST, MANIFEST, RCRIS-SQG, UST
146B	4	BELLEVUE CITY ROBINSWOOD PARK	2432 148TH AVENUE SE	FINDS, RCRIS-SQG
146C	1	SATO CORPORATION	14820 NE 24TH STREET	FINDS, HWS, MANIFEST, RCRIS-SQG, VCP
146D	4	RITE AID 5200	14880 NE 24TH STREET	FINDS, MANIFEST, RCRIS-SQG
147	2	SUN DRY CLEANERS	15230 NE 24TH STREET	CSCSL NFA, FINDS, VCP
151A	4	STANDARD BRANDS PAINT 59	14625 NE 24TH STREET	FINDS, RCRIS-SQG, UST
151B	4	BARRIER MOTORS INCORPORATED	14600 NE 24TH STREET	FINDS, RCRIS-SQG
151C	2	INTERLAKE AUTOMOBILE CORPORATION	14640 NE 24TH STREET	FINDS, ICR, LUST, RCRIS-SQG, UST
153A	4	BOSLEY PET FOOD MART	15155 NE 24TH STREET	FINDS, FTTS
153B	4	OVERLAKE CLEANERS REDMOND	15129 NE 24TH STREET	FINDS, INACTIVE DRYCLEANERS, RCRIS-SQG
155	4	LEASE CRUTCHER LEWIS BELLEVUE	2335 130TH AVENUE NE	FINDS, RCRIS-SQG
157	4	ROBERTS SERVICE COMPANY	12121 NE NORTHUP WAY, SUITE 112C	FINDS, RCRIS-SQG
158	4	BFS RETAIL & COMMERCIAL OPERATIONS LLC	2299 140TH AVENUE NE	FINDS, MANIFEST, RCRIS-SQG
159	3	WASTE MANAGEMENT	2260 152ND AVENUE NE	SPILLS
161	4	SMITH & HAWKEN	12200 NORTHUP WAY	FINDS, RCRIS-SQG
164	4	EASTSIDE MEDICAL LAB REDMOND	2205 152ND AVENUE NE	FINDS, RCRIS-SQG
165	4	PINE TREE CLEANERS	2209 140TH AVENUE NE	FINDS, INACTIVE DRYCLEANERS, RCRIS-SQG
166A	4	BUD'S TOPSOILS, INC.	2033 120TH AVENUE NE	FINDS, UST

TABLE G3-2
Hazardous Materials Sites Identified

EDR Map Label ID	Risk Ranking ^a	Site Name	Address	Database
166B	4	SAFEBWAY BAKERY PLANT	2100 120TH AVENUE NE	FINDS, UST
166C	4	MOLECUMETICS LIMITED	2023 120TH AVENUE NE, SUITE 400	FINDS, MANIFEST, RCRIS-SQG
167	3	STORAGE	12465 NORTHUP WAY	SPILLS
168	4	DDF & S, INC.	2139 148TH AVENUE NE	FINDS, RCRIS-SQG
169	4	SPECTRA LUX CORPORATION	12840 NE 21ST PL	FINDS, RCRIS-SQG
170	3	LL NORTHUP CENTER	12611 NORTHUP WAY	FINDS, ICR, LUST, RCRIS-SQG, UST
171A	4	BELLEVUE AUTO ELECTRIC, INC.	14320 NE 21ST STREET, SUITE 5	FINDS, RCRIS-SQG
171B	2	PND CORPORATION	14320 NE 21ST STREET, SUITE6	LF
172	4	STRICTLY BMW INDEPENDENT SVC, INC.	2111 140TH AVENUE NE	FINDS, RCRIS-SQG
173A	4	SHERWIN WILLIAMS FINISHES BELLEVUE 9831	2021 130TH AVENUE NE, SUITE H	FINDS, MANIFEST, RCRIS-SQG
173B	4	PARAMETRIX, INC.	13020 NORTHUP WAY	FINDS, RCRIS-SQG
173C	4	TCJ ORGANO BORANES	13029 NORTHUP WAY 103	FINDS, RCRIS-SQG
174A	4	WEYERHAEUSER COMPANY	1899 120TH AVENUE NE	FINDS, NPDES, RCRIS-SQG
174B	1	WILLAMETTE INDUSTRIES, INC.	1899 120TH AVENUE NE	ICR, LUST, UST
175A	4	BELLEVUE MOTOR WORKS	2040 152ND AVENUE NE	FINDS, RCRIS-SQG
175B	2	EXOTIC MOTORS (TWO REPORTS)	2040 152ND AVENUE NE	ICR, LUST, UST
176A	4	BELLEVUE ISUZU	15260 BELLEVUE REDMOND ROAD	FINDS, RCRIS-SQG
176B	1	BAKKERS FINE DRY CLEANING	15260 NE 20TH STREET	FINDS, INACTIVE DRYCLEANERS, RCRIS-SQG, VCP
176C	1	BEL RED ROAD RETAIL LLC	15260 NE 20TH STREET	HWS
176D	4	SALES/SERVICES ENTERPRISES, INC.	15238 NE 20TH STREET	FINDS, UST
176E	3	BROWN BEAR CAR WASH	15248 BELLEVUE REDMOND ROAD	CSCSL NFA, FINDS, ICR, RCRIS-SQG, UST
177A	4	VN GRAPHICS INCORPORATED	2020 124TH AVENUE NE, BUILDING C	FINDS, RCRIS-SQG
177B	4	2001 124TH NE BELLEVUE	2001 124TH AVENUE NE	FINDS, RCRIS-SQG
177C	4	METRO EAST OPERATING BASE	1975 124TH AVENUE NE	NPDES
178A	4	TOP AUTO, INC. BELLEVUE	2011 148TH AVENUE NE	FINDS, RCRIS-SQG
178B	2	SEARS ROEBUCK & COMPANY	2200 148TH AVENUE NE	CSCSL NFA, FINDS, ICR, MANIFEST, RCRIS-SQG, UST, VCP
178C	2	FRED MEYER	2041 148TH AVENUE NE	ICR, LUST, UST
179A	3	CHEVRON	13948 NE 20TH STREET	FINDS, ICR, LUST, MANIFEST, RCRIS-SQG, SPILLS, UST
179B	3	ORI RESTAURANT	14339 NE 20TH STREET	SPILLS
179C	2	GERMAN AUTO TECH	13910 NE 20TH STREET	CSCSL NFA, FINDS
179D	4	GAIS NORTHWEST BAKERIES	13823 NE 20TH STREET	FINDS, UST
179E	4	MELCO LABS	14408 NE 20TH STREET	FINDS, RCRIS-SQG
179F	4	SCOTTS QUALITY AUTO REPAIR	13910 NE 20TH STREET	FINDS, RCRIS-SQG
179G	2	NORTHWEST CLEANERS BELLEVUE	14125 NE 20TH STREET	FINDS, HWS, ICR, INACTIVE DRYCLEANERS, RCRIS-SQG
179H	4	FIVE STAR CLEANERS	14100 NE 20TH STREET	FINDS, INACTIVE DRYCLEANERS, RCRIS-SQG
179I	4	CAMERAS WEST 1033	14309 NE 20TH STREET	FINDS, MANIFEST, RCRIS-SQG
179J	2	MINI-LUBE #1103	14001 NE 20TH STREET	LUST, UST, ICR
179K	2	PHILLIPS 66 COMPANY SS#071792	140TH & 20TH NE STREET	ICR, SPILLS, UST
179L	4	BELLEVUE KAWASAKI, INC.	14001 NE 20TH STREET	UST

TABLE G3-2
Hazardous Materials Sites Identified

EDR Map Label ID	Risk Ranking ^a	Site Name	Address	Database
179M	4	MCDONALDS OF NORTHUP	13841 NE 20TH STREET	FINDS, UST
179N	2	UNOCAL 5759	13837 NE 20TH STREET	FINDS, LUST, UST
179O	2	BELLEVUE NISSAN	13817 NE 20TH STREET	ICR, LUST, UST
180A	4	BODYWORKS AUTO REBUILD, INC.	12882 NORTHUP WAY	FINDS, MANIFEST, RCRIS-SQG
180B	4	130TH AND NORTHUP WAY	130TH AND NORTHUP WAY	ERNS
180C	4	SUMMIT RESCUE, INC.	12880 NORTHUP WAY	FINDS, RCRIS-SQG
180D	3	STAR RENTALS, INC.	12900 NORTHUP WAY	FINDS, ICR, LUST, UST
180E	2	ARCO #6217	12903 NE 20TH STREET	FINDS, ICR, LUST, MANIFEST, RCRIS-SQG, UST,
181A	4	KEY DATA, INC.	13400 NORTHUP WAY, SUITE 47B	FINDS, RCRIS-SQG
181B	4	AA RENTALS OF BELLEVUE	13285 NE 20TH STREET	FINDS, UST
181C	4	AT&T WIRELESS LAKE BELLEVUE WOS1	13240 NORTHUP WAY 24	FINDS
181D	4	INTEGRATED CIRCUITS, INC.	13256 NORTHUP WAY	FINDS, RCRIS-SQG
182A	4	NEW IMAGE AUTOBODY, INC.	13427 NE 20TH STREET, SUITE K	FINDS, RCRIS-SQG
182B	4	PRECISION COLLISION	13411 NORTHUP WAY	FINDS, RCRIS-SQG
182C	4	ACURA OF BELLEVUE	13424 NE 20TH STREET	FINDS, RCRIS-SQG
182D	4	BNS ENTERPRISES, INC.	13424 NE 20TH STREET	UST
182E	4	PRECISION TUNE OVERLAKE	13421 NE 20TH STREET	FINDS, RCRIS-SQG, UST
182F	4	EVANS TIRE SVC CTRS 060	13421 NE 20TH STREET, SUITE F	FINDS, RCRIS-SQG
182G	4	SUNSHINE TRADING COMPANY	13419 NE 20TH STREET	FINDS, UST
183A	4	BMW OF BELLEVUE	13617 NORTHUP WAY NE	FINDS, RCRIS-SQG
183B	4	STAR AUTO SERVICE, INC.	13622 NE 20TH STREET, SUITE H	FINDS, RCRIS-SQG
184	4	PARK PLACE LTD	13710 NORTHUP WAY	FINDS, RCRIS-SQG
185	4	AMIRA PARTNERSHIP ISAAC BARUCH	15212 NE 20TH STREET	FINDS
187	2	OVERLAKE GOODYEAR BELLEVUE 8836	14923 NE 20TH STREET	FINDS, HWS, LUST, MANIFEST, RCRIS-SQG, UST, VCP
188	1	BP EXPLORATION OIL, INC. 03102	1960 148TH AVENUE NE	FINDS, ICR, LUST, RCRIS-SQG, UST
189	3	HIGHLAND MIDDLE SCHOOL	15027 BELLEVUE REDMOND ROAD	FINDS, ICR
193	4	LES SCHWAB	2011 148TH NE	UST
195	4	OLD BELLEVUE STATION #3	14822 BELLEVUE REDMOND ROAD	FINDS, UST
196	4	PHARMACEUTICAL WASTE SERVICES, INC.	1409 140TH PLACE NE	FINDS, RCRIS-SQG
199A	4	SEA-BIRD ELECTRONICS, INC.	1808 136TH PLACE NE	SSTS
199B	4	WESTERN TILE & MARBLE CONTRACTORS, INC.	1810 136TH PLACE NE	FINDS, RCRIS-SQG
204A	4	PURUS TECHNOLOGIES, INC.	1720 130TH AVENUE NE, SUITE 105	FTTS, ICIS
204B	4	PURUS TECHNOLOGIES INCORPORATED	1720 130TH AVENUE NE, SUITE 105	FINDS
204C	4	ALPHARMA NW, INC.	1720 130TH AVENUE NE, SUITE 101 & 103	FINDS, RCRIS-SQG
204D	2	CADMAN BELLEVUE	1701 130TH AVENUE NE	CSCSL NFA, FINDS, ICR, NPDES, RCRIS-SQG, VCP
205A	3	JOURNAL AMERICAN	1705 132ND AVENUE NE	CSCSL NFA, FINDS, ICR
205B	4	LONGVIEW PUBLISHING COMPANY	1705 132ND AVENUE NE	FINDS, UST
206	4	SERVICE MASTER OF SEATTLE	1600 132ND AVENUE NE	FINDS, MANIFEST, RCRIS-SQG

TABLE G3-2
Hazardous Materials Sites Identified

EDR Map Label ID	Risk Ranking ^a	Site Name	Address	Database
209	2	CADMAN PREMIX CO, INC.	1605 130TH AVENUE NE	FINDS, HWS
210A	4	LAKESIDE AUTO REBUILD	13242 NE 16TH STREET	FINDS, RCRIS-SQG
210B	4	EASTSIDE JOURNAL	1625 132ND AVENUE NE	FINDS, RCRIS-SQG
210C	4	VANIER BUSINESS FORMS CASCADE DIVISION	13223 NE 16TH STREET	FINDS, RCRIS-SQG
211A	4	B & H BODY SHOPS INCORPORATED	13640 NE 16TH STREET	FINDS, RCRIS-SQG
211B	4	B & M MOTORCARS	13640 NE 16TH STREET	UST
211C	4	AUTOMOTIVE MACHINE SPECIALIST AMS	1630 136TH PLACE NE	FINDS, MANIFEST, RCRIS-SQG
211D	4	LENS AUTOMOTIVE, INC.	1620 136TH PLACE NE	FINDS, MANIFEST, RCRIS-SQG, UST
212	4	BALDOR	13340 NE 16TH STREET	FINDS, UST
213A	4	ACE NOVELTY COMPANY, INC.	13434 NE 16TH STREET	FINDS, RCRIS-LQG
213B	4	SPECIALTY MFG DIV OF ARROW INT., INC.	13430 NE 16TH STREET	FINDS, RCRIS-SQG
213C	4	MCCARTHY	13420 NE 16TH STREET, SUITE D	FINDS, RCRIS-SQG
213D	4	T MOBILE USA, INC.	13410 NE 16TH STREET	FINDS
213E	4	DAVID A MOWAT COMPANY	13400 NE 16TH STREET	FINDS, RCRIS-SQG, UST
213F	4	T & A SUPPLY COMPANY	13420 NE 16TH STREET, SUITE B	FINDS, RCRIS-SQG
213G	4	B MAYERS INVESTMENTS	13434 NE 16TH STREET	UST
214	2	FIBRES INTERNATIONAL, INC.	1533 120TH AVENUE NE	FINDS, ICR, LUST, RCRIS-SQG, UST
217	4	THE EVANS COMPANY	EVANS INDUSTRIAL PARK	UST
218A	2	BELLEVUE PLATING COMPANY, INC.	1513 128TH PLACE NE	CSCSL NFA, FINDS
218B	4	RADIATOR EXCHANGE SERVICES	12824 NE 14TH PLACE	FINDS, RCRIS-SQG
218C	4	BELLEVUE CITY PARKS REC KELSEY CREEK	13204 SE 8TH PLACE	FINDS, RCRIS-SQG
218D	4	KLASSIC AUTO REFINISHING INC	1514 128TH PLACE NE	FINDS, RCRIS-SQG
218E	4	BELLEVUE POLISHING	1511 128TH PLACE NE	FINDS, RCRIS-SQG
218F	4	GARDEN WORKS	12724 NE 15TH PLACE	FINDS
218G	4	NEW LOOK AUTO BODY	12809 NE 14TH PLACE	FINDS, RCRIS-SQG
218H	4	RNR AUTOMOTIVE REFINISHING INC 128TH PL	1508 128TH PLACE NE	FINDS, RCRIS-SQG
218I	4	LAITALA PREFINISH COMPANY, INC.	12870 NE 15TH PLACE	FINDS, RCRIS-SQG
218J	4	PROTO DESIGN, INC.	12831 NE 14TH PLACE	FINDS, RCRIS-SQG
218K	2	BELLEVUE POLISHING INCORPORATED	1513 128TH PLACE NE	CERCLIS-NFRAP
219A	4	CHRISS GERMAN AUTO SERVICE	1503 130TH AVENUE NE	FINDS, RCRIS-SQG
219B	4	KELLYS EASTSIDE WHEEL & FRAME, INC.	1500 130TH AVENUE NE	FINDS, MANIFEST, RCRIS-SQG, UST
221A	4	SAFEWAY INCORPORATED	1500 124TH AVENUE NE	FINDS, RCRIS-SQG
221B	4	SAFEWAY, INC., MILK DEPARTMENT	1469 124TH AVENUE NE	ERNS, FINDS, HMIRS, MANIFEST, RCRIS-SQG
221C	1	SAFEWAY WAREHOUSE INC DIST CENTER	1227 124TH AVENUE NE	ERNS, FINDS, FTTS, ICR, LUST, MANIFEST, NPDES, RCRIS-SQG, SPILLS, UST
222	2	CURRAN BUSINESS PARK/MOBIL OIL COMPANY	1525-55-75 132ND AVENUE NE	ICR
223A	4	GARDEN WORKS	1551 127TH PLACE NE	FINDS
223B	4	BYS AUTOMOTIVE, INC.	1557 127TH PLACE NE	FINDS, RCRIS-SQG
223C	4	GARDEN WORKS	1515 127TH PLACE NE	FINDS

TABLE G3-2
Hazardous Materials Sites Identified

EDR Map Label ID	Risk Ranking ^a	Site Name	Address	Database
223D	4	AAA ELETROSTATIC REFINISHING	1555 127TH PLACE NE	FINDS, RCRIS-SQG
223E	4	MACHINE DESIGN & ESTIMATES, INC.	1454 127TH PLACE NE	FINDS, RCRIS-SQG
223F	3	ZEROREX - CARPET CLEANING	1488 127TH PLACE NE	SPILLS
226A	4	BELLEVUE AUTO REBUILD, INC.	1424 130TH AVENUE NE	FINDS, MANIFEST, RCRIS-SQG
226B	4	RNR AUTOMOTIVE REFINISHING, INC.	1408 130TH AVENUE NE	FINDS, MANIFEST, RCRIS-SQG
226C	4	PSE HYDRO WEST GROUP, INC.	1422 130TH AVENUE NE	FINDS, RCRIS-SQG
226D	4	BEL RED AUTO REBUILD	1406 130TH AVENUE NE	FINDS, MANIFEST, RCRIS-SQG
226E	4	SAFEGWAY STORES, INC.	1400 130TH AVENUE NE	FINDS, UST
226F	3	SAFEGWAY MID-MOUNTAIN ANNEX	1430 130TH AVENUE NE	FINDS, LUST, UST
226G	3	OVERLAKE PHOTO COOMPANY, INC.	1423 130TH AVENUE NE	FINDS, ICR, LUST, RCRIS-SQG, UST
227	2	K & L DISTRICT NORTH BELLEVUE FACILITY	1445 120TH AVENUE NE	CSCSL NFA, FINDS, ICR, RCRIS-SQG, UST, VCP
229	4	DOUGLAS E CHEW	1515 134TH AVENUE NE	FINDS, UST
12	4	CITY OF REDMOND FIRE DEPARTMENT	8450 161TH AVENUE NE	FINDS, UST
15	4	REDMOND TRANSIT CENTER	16160 NE 83RD STREET	NPDES
16	3	METRO	8178 161ST AVENUE NE	SPILLS
18	4	ECHO CLEANERS	8084 160TH AVENUE NE	FINDS
22	2	BOBS CHEVRON SERVICE, INC.	16000 REDMOND WAY	FINDS, HWS LUST, MANIFEST, RCRIS-SQG, UST, VCP
27	1	CLEANING CENTER OF REDMOND	15796 REDMOND WAY	BROWNFIELDS, FINDS, HWS, RCRIS-SQG
29A	4	EXXON 7-9068	16311 REDMOND WAY	UST
29B	2	PREMIUM TUNE N LUBE REDMOND	16311 REDMOND WAY	FINDS, HWS, RCRIS-SQG
30A	4	EASTSIDE COLLISION CENTER	7929 159TH PLACE NE	FINDS, MANIFEST, RCRIS-SQG
30B	3	UNKNOWN	7925 159TH PLACE NE	SPILLS
30C	4	EASTSIDE IMPORT AUTO REBUILD	7927 159TH PLACE NE	FINDS, RCRIS-SQG
30D	3	REDMOND WAY / 159TH	REDMOND WAY / 159TH	SPILLS
33A	3	KELLEY REALTY, INC.	16450 REDMOND WAY	FINDS, ICR, LUST, RCRIS-SQG, UST
33B	4	PHILLIPS 66 COMPANY SS#071842	16401 REDMOND WAY	FINDS, UST
33C	3	GODFATHER'S PIZZA	16505 REDMOND WAY	SPILLS
34A	4	CREATIVE LABEL, INC.	7829 159TH PLACE NE	FINDS, RCRIS-SQG
34B	4	FLOORCRAFT, INC.	7842 159TH PLACE NE	FINDS, RCRIS-SQG
34C	4	CIRTEC CORPORATION	7841 159TH PLACE NE	FINDS, RCRIS-SQG
35A	4	REDMOND AAA RADIATOR, INC.	7740 159TH PLACE NE	FINDS, RCRIS-SQG
35B	4	JM NEY COMPANY	7680 159TH PLACE NE	FINDS, RCRIS-SQG
35C	4	ACCURATE AUTO BODY	7662 159TH PLACE NE	FINDS, RCRIS-SQG
35D	2	JACKPOT COUNTRY STORE 304	7725 159TH PLACE NE	CSCSL NFA, FINDS, LUST, UST, VCP
35E	4	A&G LEASING	7740 159TH PLACE NE	UST
37	4	TD FEEDS	16355 CLEVELAND STREET	FINDS
38	1	KING COUNTY MATERIALS LAB	7733 LEARY WAY NE	FINDS, HWS, ICR, LUST, RCRIS-SQG, UST
40A	4	KIM TAILOR & DRY CLEANING	16720 REDMOND WAY	FINDS, INACTIVE DRYCLEANERS, RCRIS-SQG
40B	4	MAX D NICHOLLS	16717 REDMOND WAY	FINDS, UST

TABLE G3-2
Hazardous Materials Sites Identified

EDR Map Label ID	Risk Ranking ^a	Site Name	Address	Database
41A	4	LUCKS FOOD MART 305	16757 REDMOND WAY	FINDS, UST
41B	2	GARYS CHEVRON SERVICE	16760 REDMOND WAY	CSCSL NFA, FINDS, ICR, RCRIS-SQG, UST, VCP
42	2	UNOCAL REDMOND BULK PLANT	16631 CLEVELAND STREET	CSCSL NFA, FINDS, ICR, VCP
46A	4	VINTAGE RACING MOTORS, INC.	7509 159TH PLACE NE	FINDS, RCRIS-SQG, UST
46B	4	CREATIVE COLOR SERVICE CORPORATION	7495 159TH PLACE NE	FINDS, RCRIS-SQG
46C	4	QUEEN CITY AUTO REBUILD, INC	7502 159TH PLACE NE	FINDS, MANIFEST, RCRIS-SQG
46D	4	STERLING AUTOBODY PAINT, INC.	7520 159TH PLACE NE	FINDS, RCRIS-SQG
47	2	REDMOND UNION 76	16909 REDMOND WAY	CSCSL NFA, FINDS, ICR, RCRIS-SQG, SPILLS, UST
50A	4	DAN LAUR CORP DBA RP AUTO SERVICE	7430 159TH PLACE NE	FINDS, RCRIS-SQG
50B	2	SAMMAMISH WATERWAYS CONDOMINIUM COMPLEX	15858 LEARY WAY	ICR
51A	3	SAFEGWAY	17246 REDMOND WAY	SPILLS
51B	4	RITE AID 5199	17220 REDMOND WAY	FINDS, MANIFEST, RCRIS-SQG
51C	4	BEAR CREEK VILLAGE SHOPPING CENTER	17210 REDMOND WAY	FINDS, MANIFEST, RCRIS-SQG
51D	2	BEAR CREEK CLEANERS	17260 REDMOND WAY	CSCSL NFA, FINDS, VCP
51E	4	KITS CAMERAS 1007	17166 REDMOND WAY	FINDS, MANIFEST, RCRIS-SQG
51F	3	CONTRACTOR AT	17220 REDMOND WAY	SPILLS
52	4	CONTRACTUAL SCHOOL	16250 NE 74TH STREET	FINDS
56	4	GUARANTEED AUTO REBUILD	17657 1/2 REDMOND WAY	FINDS, RCRIS-SQG
59A	1	DUNKIN & BUSH, INC.	17301 NE 70TH STREET	CSCSL NFA, FINDS, MANIFEST, RCRIS-LQG
59B	4	NORVAC SERVICES, INC.	17301 NE 70TH STREET	FINDS, RCRIS-SQG
60A	4	REDMOND AUTOMOTIVE	18130 REDMOND FALL CITY ROAD	FINDS, RCRIS-SQG
60B	4	KENS REDMOND AUTO BODY, INC.	18138 REDMOND FALL CITY ROAD	FINDS, MANIFEST, RCRIS-SQG
60C	2	CIRCLE K STORE 5507 BP OIL	17809 REDMOND FALL CITY ROAD	CSCSL NFA, FINDS, ICR, RCRIS-SQG, UST, VCP
60D	4	LUMBERMENS BUILDING CENTER	17875 REDMOND WAY	FINDS, UST
60E	2	TWIN PEAKS EQUIPMENT	17950 REDMOND WAY	FINDS, LUST, RCRIS-SQG, UST
61A	4	SIGN PROS	17425 NE 70TH STREET	FINDS, RCRIS-SQG
61B	4	COAST PAINTING, INC.	17443 NE 70TH STREET	FINDS, RCRIS-SQG
61C	4	FINAL PHASE FINISHING	17445 NE 70TH STREET	FINDS, RCRIS-SQG
61D	4	EASTSIDE COLLISION CENTER ASG	17443 NE 70TH STREET, BUILDING A	FINDS, RCRIS-SQG
62	4	WASHINGTON DIESEL SERVICE, INC.	17611 NE 70TH STREET	FINDS, RCRIS-LQG
63	4	ROGERS JIM	17520 NE 70TH STREET	FINDS, RCRIS-SQG
68	4	ALL GREEN CORPORATION	6855 176TH AVENUE NE, SUITE 200	FINDS, RCRIS-SQG
71	4	SANTANA TRUCKING & EXCAVATING, INC.	18666 REDMOND FALL CITY ROAD	UST
78	4	GENIE INDUSTRIES	17760 NE 67TH COURT	FINDS, RCRIS-LQG
84A	4	NOW IMPRESSIONS	17985 NE 65TH STREET	FINDS, RCRIS-SQG
84B	3	UNKNOWN	17935 NE 65TH STREET	SPILLS
85	4	PAC SERVICES	17735 NE 65TH STREET	FINDS, RCRIS-SQG
86A	4	PROTO DESIGN, INC.	17824 NE 65TH STREET	FINDS, RCRIS-LQG
86B	4	KASCO CORPORATION	17830 NE 65TH STREET	FINDS, RCRIS-SQG

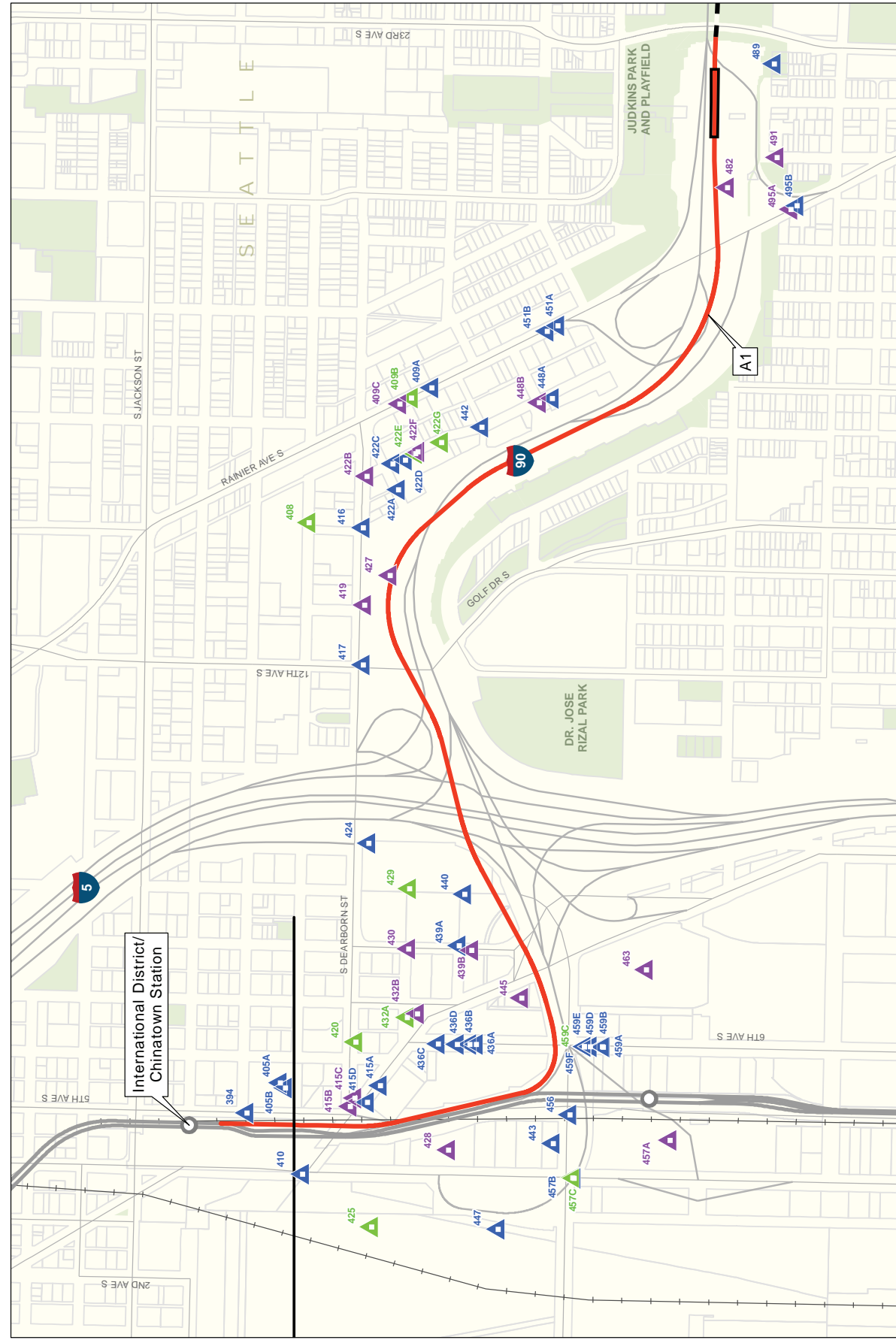
TABLE G3-2
Hazardous Materials Sites Identified

EDR Map Label ID	Risk Ranking ^a	Site Name	Address	Database
86C	4	REDMOND TRANSMISSION, INC.	17825 NE 65TH STREET, SUITE 110	FINDS, RCRIS-SQG
92	4	ALBERTSON PAINTING, INC.	15614 NE 59TH WAY	FINDS, RCRIS-SQG
96	4	SAFECO LIFE INSURANCE COMPANY	5069 154TH PLACE NE	FINDS, RCRIS-SQG
98	2	SAFECO LIFE INSURANCE COMPANY	4854 154TH PLACE NE	CSCSL NFA, FINDS, VCP
103	4	SAFECO INSURANCE COMPANY OF AMERICA	15319 NE 45TH	FINDS, MANIFEST,
112	1	MICROSOFT	4001 156TH AVENUE NE	FINDS, HWS,
115A	4	H&N, INC.	15305 NE 40TH STREET	FINDS, UST
115B	4	EASTSIDE MEDICAL LABORATORY 40	15305 NE 40TH STREET, SUITE 200	FINDS, RCRIS-SQG
115C	4	ROCKWELL PUBLISHING COMPANY	15305 NE 40TH STREET, SUITE 310 SITE	FINDS, RCRIS-SQG
115D	4	WESCAN COLOR CORPORATION	15305 NE 40TH STREET, SUITE 100	FINDS, RCRIS-SQG

^a Risk levels:

1. High. Sites that may be substantially contaminated and may create liability for Sound Transit either in construction liability or by virtue of acquiring all or a portion of the site, such as for a maintenance facility.
2. Medium. Sites where the nature of potential contamination is known based on existing investigation data, the potential contaminants are not extremely toxic or difficult to treat, and remediation approaches are probably straightforward.
3. Low. Sites where the nature of potential contamination is known based on existing investigation data, and the sites are not expected to have noticeable impacts on the project due to their location.
4. Sites that use hazardous materials but have no reported release. These sites are not expected to have a noticeable impact on the project.

This portion of the page intentionally left blank.



Source: Data from Environmental Data Resources (2007), City of Seattle (2002), and King County (2006).

**Exhibit G3-1
Hazardous Material Sites
Within 1/8 Mile of Alternatives
Segment A - Seattle
East Link Project**

Hazardous Material Site Risk Levels

- ▲ High-Risk Site
- ▲ Medium-Risk Site
- ▲ Low-Risk Site
- ▲ Site with no Previous Release

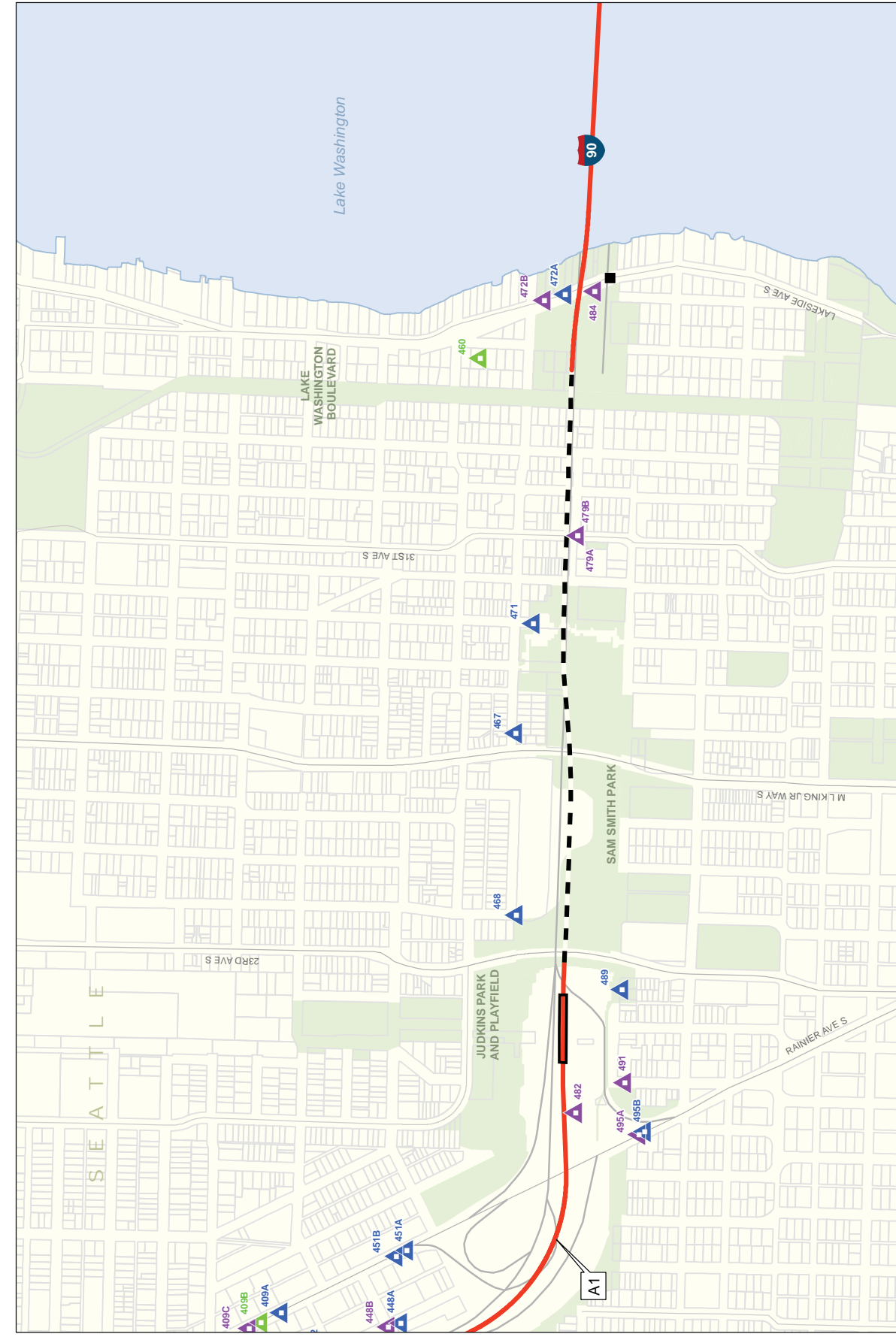
Route Types

- Route at Grade
- - - Elevated Route
- ⋯ Route in Retained Cut
- - - Route in Tunnel

Traction Power

- Substation
- Proposed Station
- City Limits

0 0.1 0.2 Miles



Source: Data from Environmental Data Resources (2007), City of Seattle (2002), and King County (2006).

**Exhibit G3-2
Hazardous Material Sites
Within 1/8 Mile of Alternatives
Segment A - Seattle
East Link Project**

Hazardous Material Site Risk Levels

- ▲ High-Risk Site
- ▲ Medium-Risk Site
- ▲ Low-Risk Site
- ▲ Site with no Previous Release

Route Types

- Route at Grade
- - - Elevated Route
- ⋯ Route in Retained Cut
- - - Route in Tunnel

Traction Power

- Substation
- Proposed Station
- City Limits

0 0.1 0.2 Miles



Source: Data from Environmental Data Resources (2007) and King County (2006).

**Exhibit G3-3
Hazardous Material Sites
Within 1/8 Mile of Alternatives
Segment A - Mercer Island
East Link Project**

- Hazardous Material Site Risk Levels**
- ▲ High-Risk Site
 - ▲ Medium-Risk Site
 - ▲ Low-Risk Site
 - ▲ Site with no Previous Release
- Route at Grade**
- Route at Grade
 - Elevated Route
 - Route in Retained Cut
 - Route in Tunnel
- Traction Power**
- Substation
 - ▭ Proposed Station
 - ▭ City Limits



Source: Data from Environmental Data Resources (2007) and King County (2006).

**Exhibit G3-4
Hazardous Material Sites
Within 1/8 Mile of Alternatives
Segment A - Mercer Island
East Link Project**

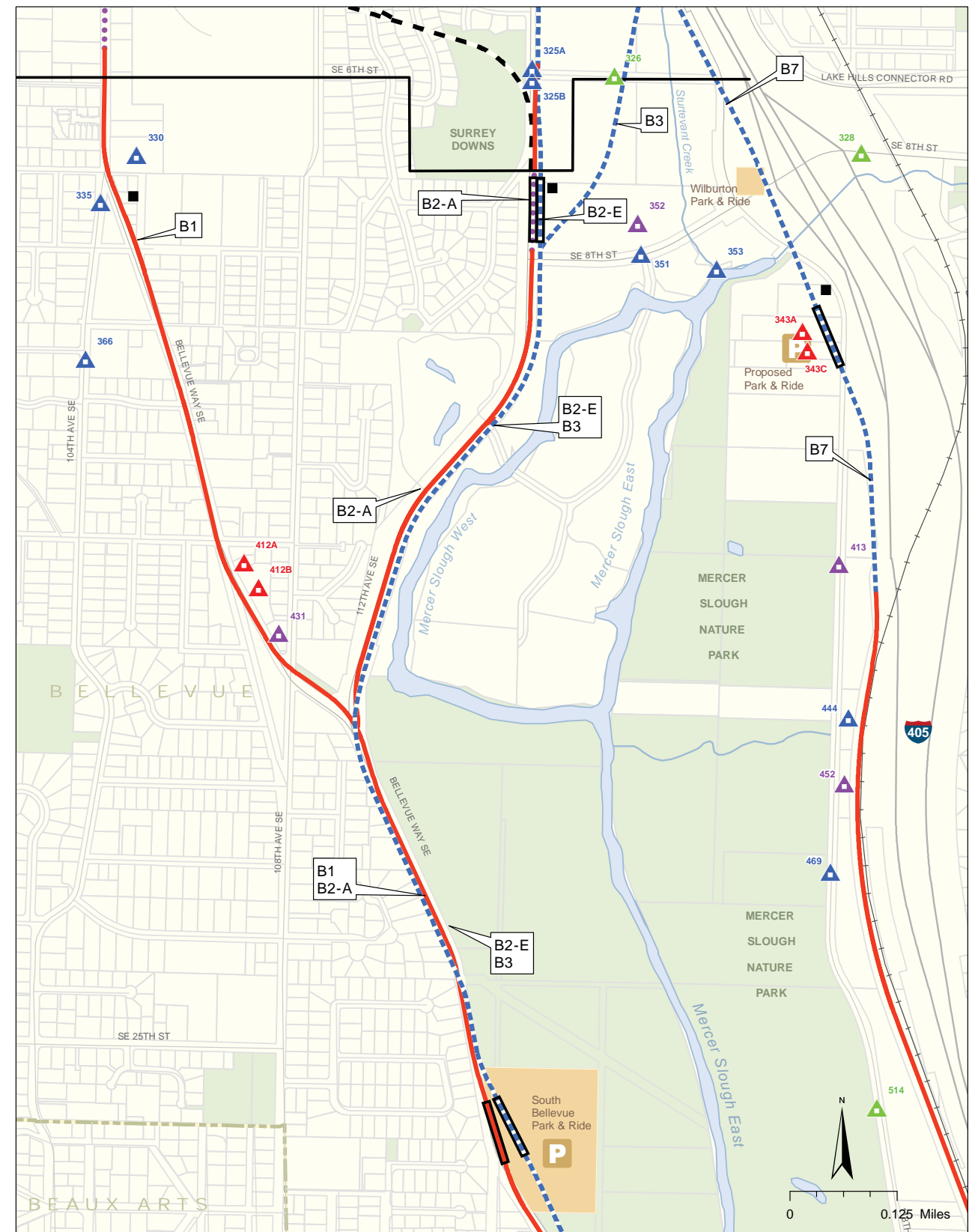
- Hazardous Material Site Risk Levels**
- ▲ High-Risk Site
 - ▲ Medium-Risk Site
 - ▲ Low-Risk Site
 - ▲ Site with no Previous Release
- Route at Grade**
- Route at Grade
 - Elevated Route
 - Route in Retained Cut
 - Route in Tunnel
- Traction Power**
- Substation
 - ▭ Proposed Station
 - ▭ City Limits



Hazardous Material Site Risk Levels
 ▲ High-Risk Site
 ▲ Medium-Risk Site
 ▲ Low-Risk Site
 ▲ Site with no Previous Release
 — Route At Grade
 - - - Elevated Route
 ···· Route in Retained Cut
 - - - Route in Tunnel
 ■ Traction Power Substation
 □ Proposed Station
 - - - City Limits

Source: Data from Environmental Data Resources (2007) and King County (2006).

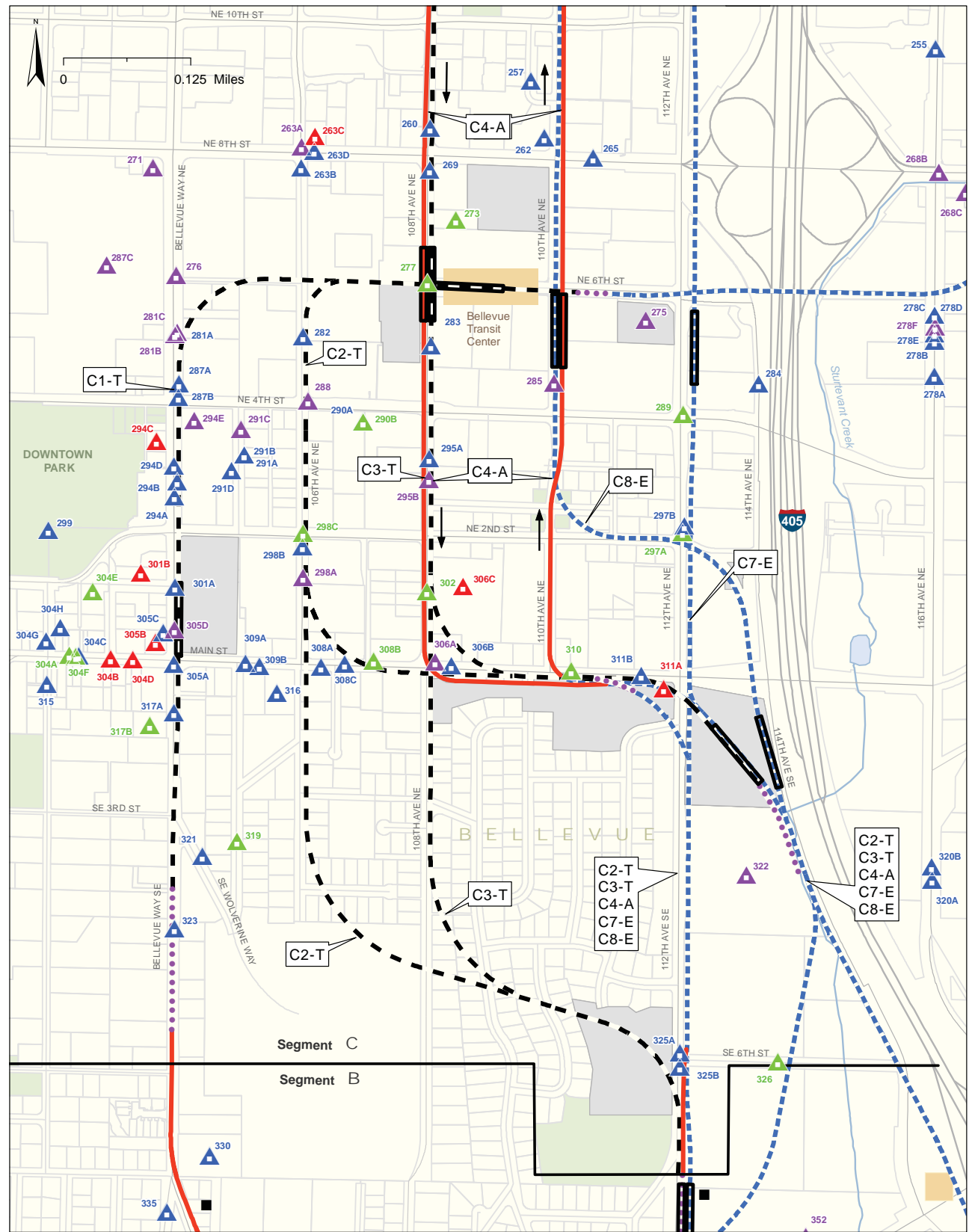
**Exhibit G3-5
 Hazardous Material Sites
 Within 1/8 Mile of Alternatives
 Segment B
 East Link Project**



Hazardous Material Site Risk Levels
 ▲ High-Risk Site
 ▲ Medium-Risk Site
 ▲ Low-Risk Site
 ▲ Site with no Previous Release
 — Route At Grade
 - - - Elevated Route
 ···· Route in Retained Cut
 - - - Route in Tunnel
 ■ Traction Power Substation
 □ Proposed Station
 - - - City Limits

Source: Data from Environmental Data Resources (2007) and King County (2006).

**Exhibit G3-6
 Hazardous Material Sites
 Within 1/8 Mile of Alternatives
 Segment B
 East Link Project**



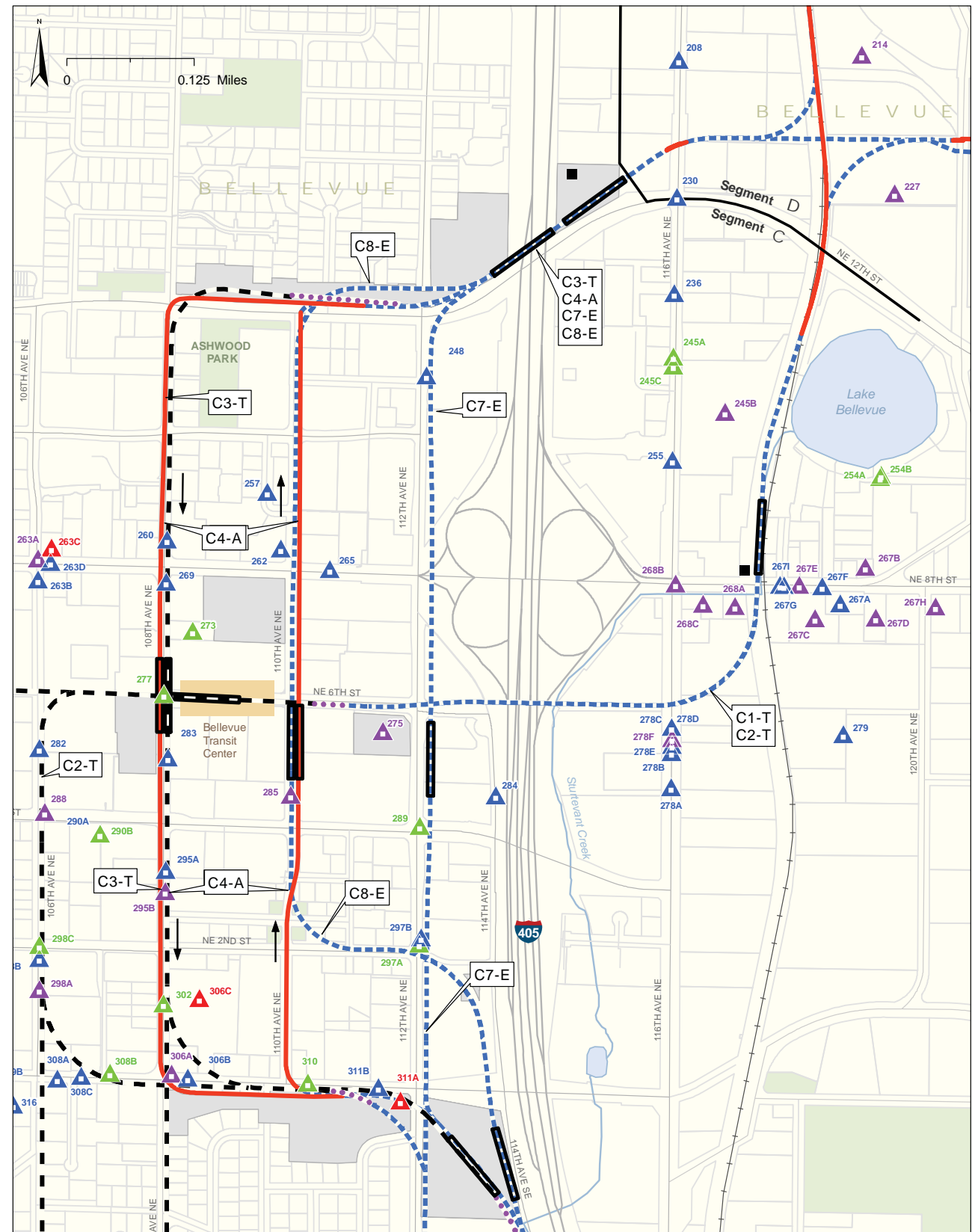
Hazardous Material Site Risk Levels
 ▲ High-Risk Site
 ▲ Medium-Risk Site
 ▲ Low-Risk Site
 ▲ Site with no Previous Release

— Route at Grade
 - - - - - Elevated Route
 Route in Retained Cut
 - - - - - Route in Tunnel

■ Traction Power Substation
 ■ Proposed Station
 ■ Tunnel Staging Area
 - - - - - City Limits

**Exhibit G3-7
 Hazardous Material Sites
 Within 1/8 Mile of Alternatives
 Segment C
 East Link Project**

Source: Data from Environmental Data Resources (2007), City of Bellevue (2005), and King County (2006).



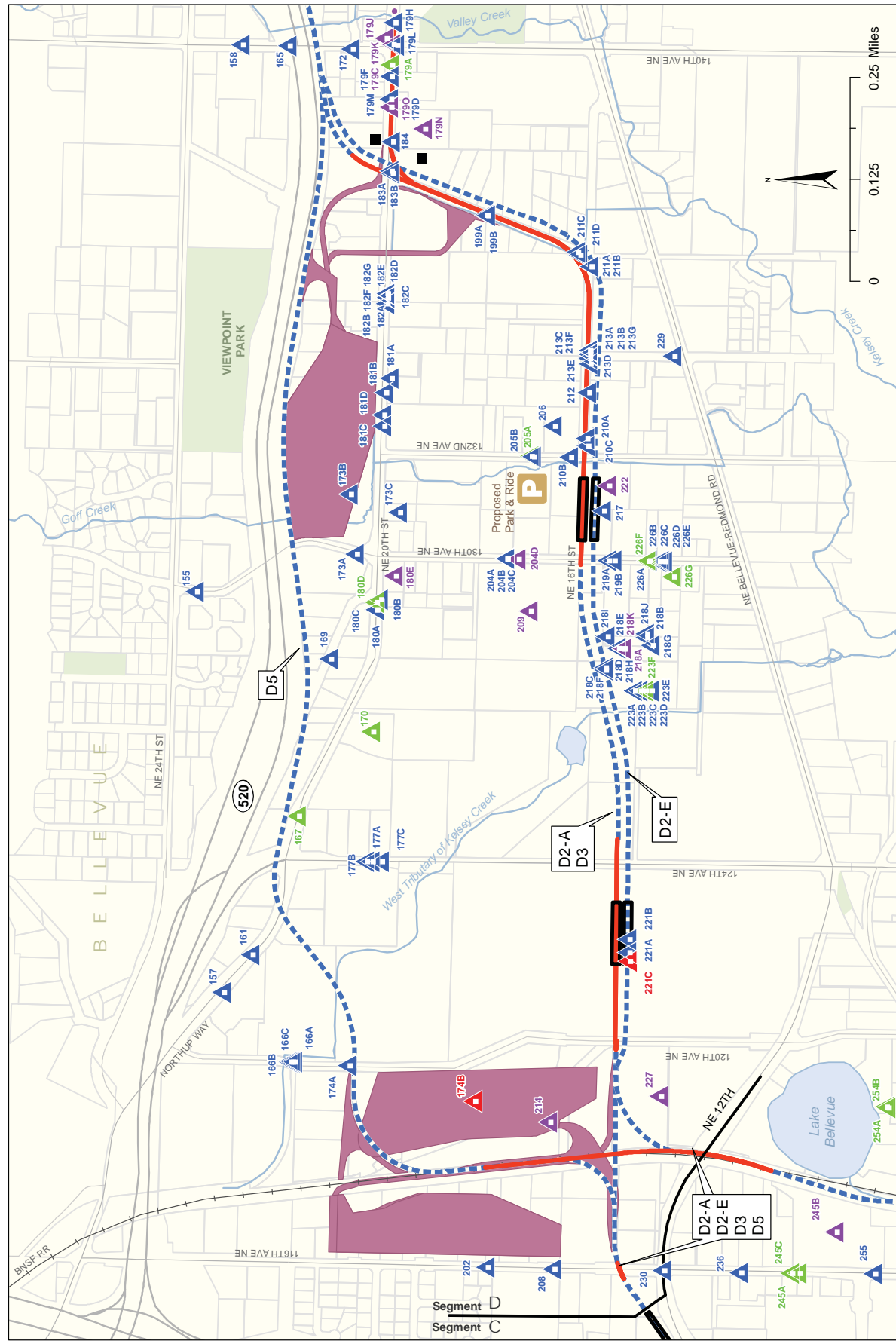
Hazardous Material Site Risk Levels
 ▲ High-Risk Site
 ▲ Medium-Risk Site
 ▲ Low-Risk Site
 ▲ Site with no Previous Release

— Route at Grade
 - - - - - Elevated Route
 Route in Retained Cut
 - - - - - Route in Tunnel

■ Traction Power Substation
 ■ Proposed Station
 ■ Tunnel Staging Area
 - - - - - City Limits

**Exhibit G3-8
 Hazardous Material Sites
 Within 1/8 Mile of Alternatives
 Segment C
 East Link Project**

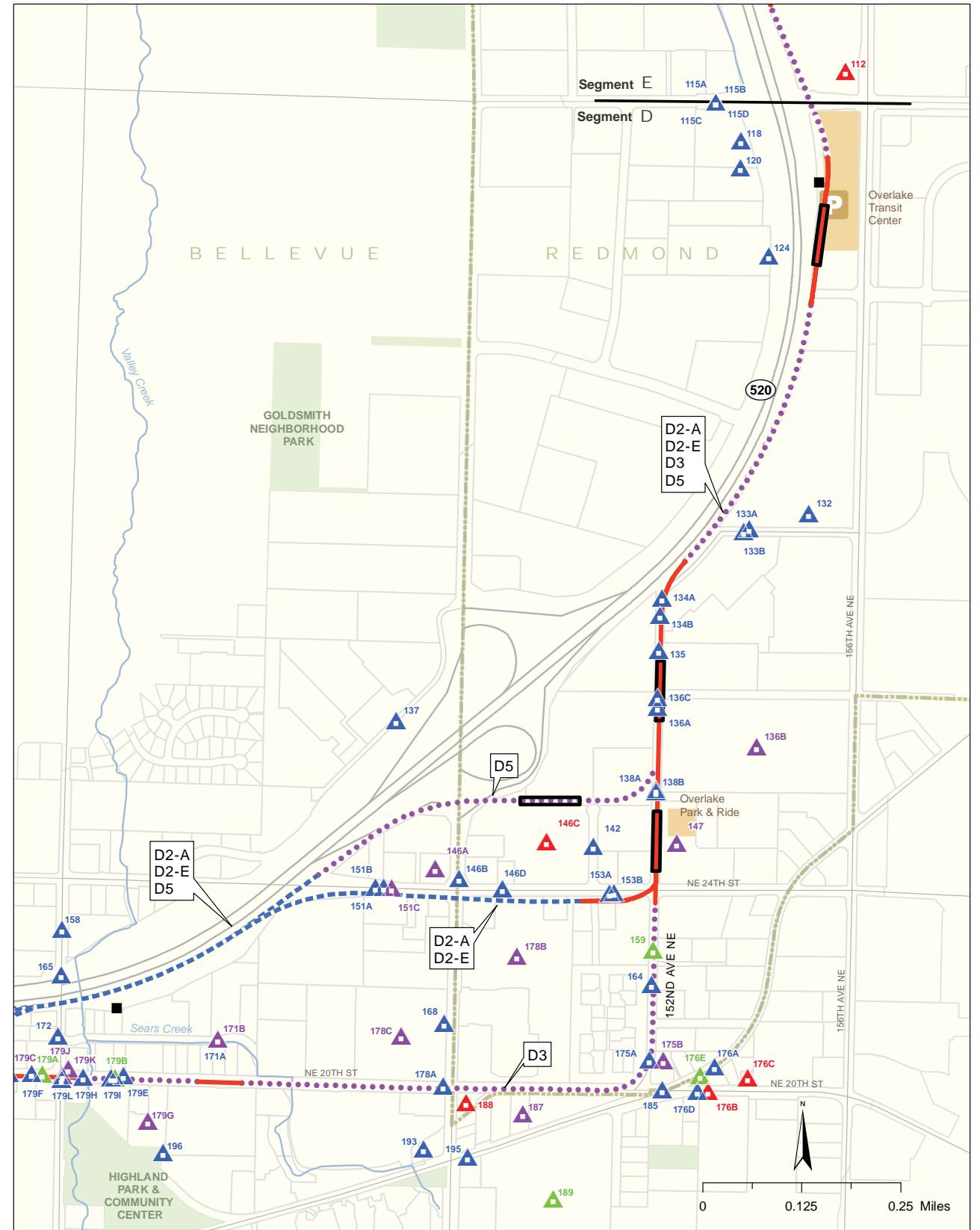
Source: Data from Environmental Data Resources (2007), City of Bellevue (2005), and King County (2006).



Source: Data from Environmental Data Resources (2007), City of Bellevue (2005), and King County (2006).

**Exhibit G3-9
Hazardous Material Sites
Within 1/8 Mile of Alternatives
Segment D
East Link Project**

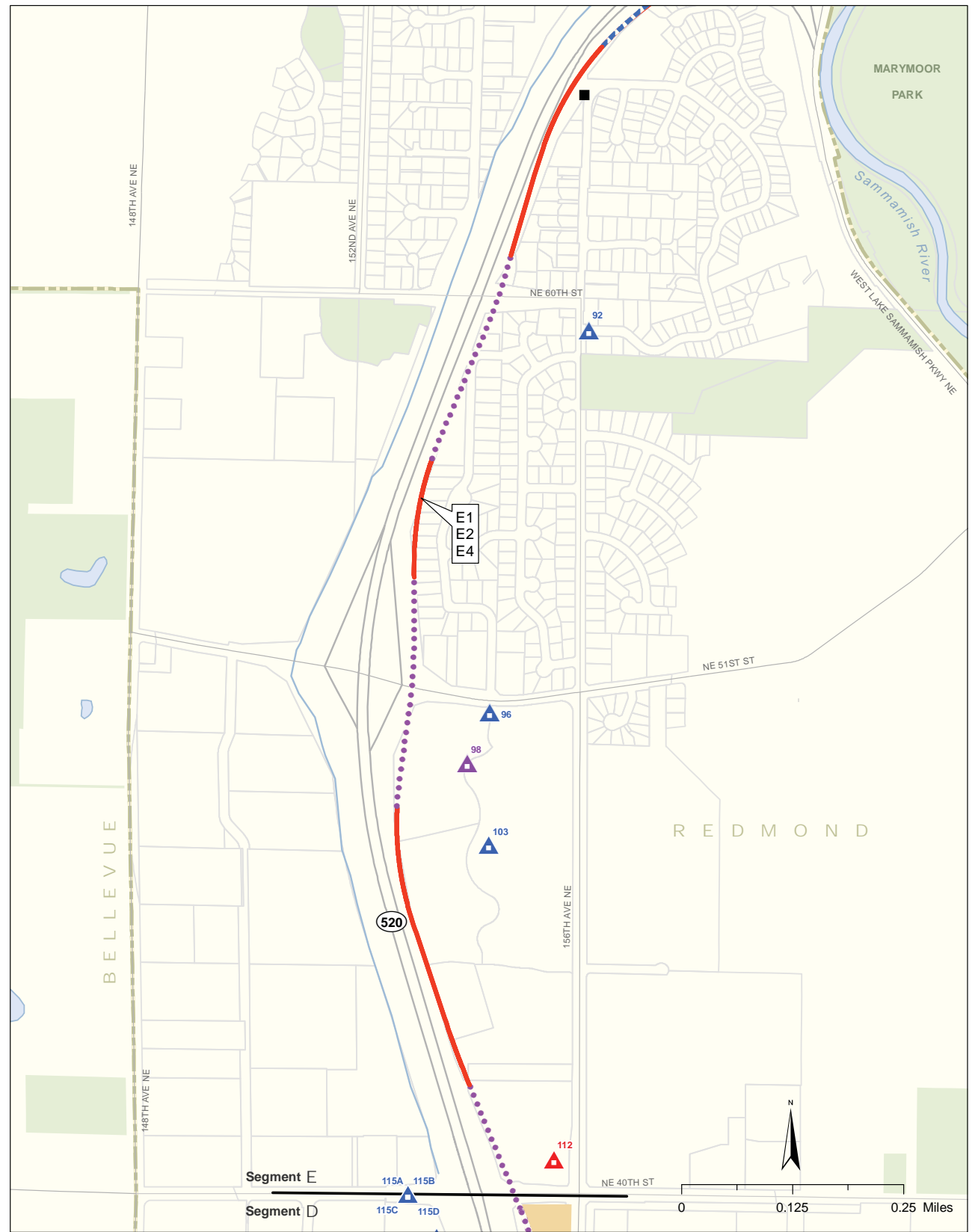
- Hazardous Material Site Risk Levels**
- ▲ High-Risk Site
 - ▲ Medium-Risk Site
 - ▲ Low-Risk Site
 - ▲ Site with no Previous Release
- Route Types**
- Route at Grade
 - - - - - Elevated Route
 - ⋯ Route in Retained Cut
 - Route in Tunnel
- Other Features**
- Traction Power Substation
 - ▭ Proposed Station
 - ▭ Maintenance Facility
 - ▭ City Limits



Source: Data from Environmental Data Resources (2007), City of Bellevue (2005), City of Redmond (2005), and King County (2006).

- Hazardous Material Site Risk Levels**
- ▲ High-Risk Site
 - ▲ Medium-Risk Site
 - ▲ Low-Risk Site
 - ▲ Site with no Previous Release
- Route Types**
- Route at Grade
 - - - - - Elevated Route
 - ⋯ Route in Retained Cut
 - Route in Tunnel
- Other Features**
- Traction Power Substation
 - ▭ Proposed Station
 - ▭ Maintenance Facility
 - ▭ City Limits

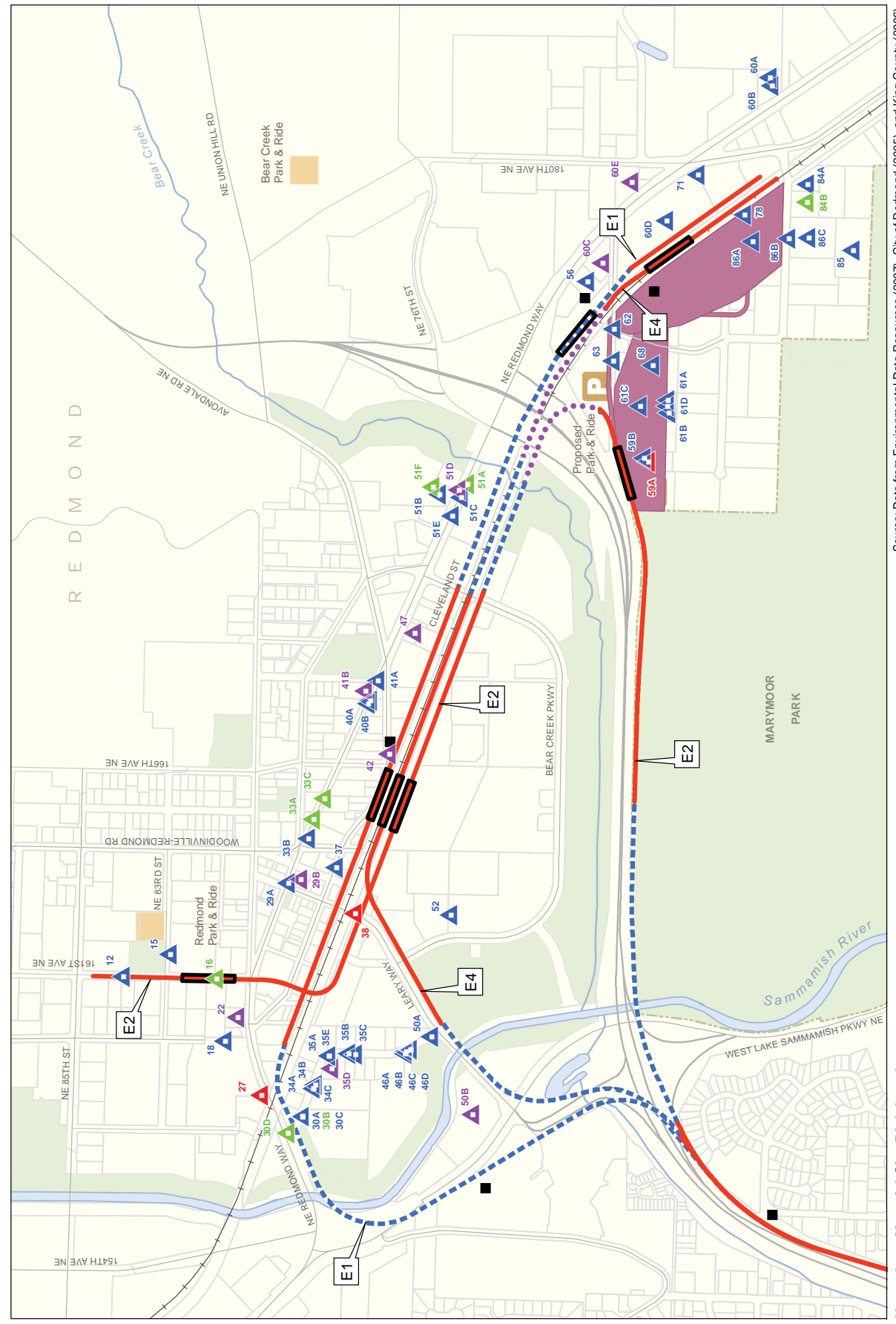
**Exhibit G3-10
Hazardous Material Sites
Within 1/8 Mile of Alternatives
Segment D
East Link Project**



- Hazardous Material Site Risk Levels**
- ▲ High-Risk Site
 - ▲ Medium-Risk Site
 - ▲ Low-Risk Site
 - ▲ Site with no Previous Release
 - Route at Grade
 - Elevated Route
 - Route in Retained Cut
 - Route in Tunnel
 - Traction Power Substation
 - ▭ Proposed Station
 - ▭ Maintenance Facility
 - ▭ City Limits

Exhibit G3-11
Hazardous Material Sites
Within 1/8 Mile of Alternatives
Segment E
East Link Project

Source: Data from Environmental Data Resources (2007), City of Redmond (2005), and King County (2006).



- Hazardous Material Site Risk Levels**
- ▲ High-Risk Site
 - ▲ Medium-Risk Site
 - ▲ Low-Risk Site
 - ▲ Site with no Previous Release
 - Route at Grade
 - Elevated Route
 - Route in Retained Cut
 - Route in Tunnel
 - Traction Power Substation
 - ▭ Proposed Station
 - ▭ Maintenance Facility
 - ▭ City Limits

Exhibit G3-12
Hazardous Material Sites
Within 1/8 Mile of Alternatives
Segment E
East Link Project

Source: Data from Environmental Data Resources (2007), City of Redmond (2005), and King County (2006).