

**Appendix F4.17**  
**Park and Recreational Resources Inventory**

---



TABLE F4.17-1

Parks and Recreational Facilities in Study Area

Name of Resource	Size (acres)	Type and/or Function	Facilities	Ownership <sup>a</sup>	Funding <sup>b</sup>	4(f) or 6(f) <sup>c</sup>
<b>Segment A, Interstate 90</b>						
Sturgus Park	2.0	Open Space	Wooded hillside with trails; contains the I-90 Bike Trail	City of Seattle		4(f) <sup>d</sup>
Taejon Park	2.0	Open Space	Wooded hillside with trails; contains the I-90 Bike Trail	City of Seattle		4(f) <sup>d</sup>
I-90 Lid Park (Unnamed portion)		Open Space	Wooded hillside; contains the I-90 Bike Trail	City of Seattle		4(f) <sup>d</sup>
Judkins Park and Playfield; part of the I-90 Lid	6.2	Community Park	Picnic tables, paths, tennis courts, play area	City of Seattle/WSDOT	RCO	4(f)
Judge Charles M. Stokes Overlook; part of the I-90 Lid	5.2	Community Park	Walking Trail	WSDOT		4(f)
Benvenuto Viewpoint; part of the I-90 Lid	1.7	Viewpoint	None	WSDOT; City of Seattle maintains		4(f)
Sam Smith Park; part of the I-90 Lid	15.2	Community Park	Play area, picnic tables, tennis courts, off-leash dog park, art	WSDOT		4(f)
East Portal Viewpoint; part of the I-90 Lid	6.9	Viewpoint	Contains the I-90 Bike Trail	WSDOT		4(f)
South Day Street Park/Boat Ramp	3.9	Waterfront Park	Waterfront access and boat dock under I-90	WSDOT/DNR		4(f)
Park on the Lid	2.0	Landscape strips	None	WSDOT		NA
Outdoor Sculpture Gallery	Part of Park on the Lid	Community Park	Outdoor Art, picnic benches	WSDOT, City of Mercer Island		4(f)
Gallagher Hill Open Space	11.3	Open Space	None	City of Mercer Island		4(f)
<b>Segment B, South Bellevue</b>						
Enatai Beach Park	4.2	Neighborhood Park	Dock, boat house, picnic area, seasonal canoe and kayak rentals; includes a connection to the I-90 trail	City of Bellevue/WSDOT	RCO	4(f)
Mercer Slough Nature Park	320	Community Park	Trails, visitor center, environmental education center, picnic areas, waterfront, canoe launch, blueberry farm, restrooms	City of Bellevue	RCO	4(f)
					LWCF	6(f)
Bellevue Way Greenbelt	0.37	Open space/undeveloped	Landscaping	City of Bellevue		NA
Old Hearststone Property	0.26	Open Space/undeveloped	None	City of Bellevue		4(f)
BNSF Railway Trail (proposed)	North Renton to Snohomish; spur in Redmond	Regional Trail	To include pedestrian and bicycle paths	BNSF Railway	(RCO - proposed)	NA
<b>Segment C, Downtown Bellevue</b>						
Surrey Downs Park	4.9	Neighborhood Park	Trails, ball fields	City of Bellevue		4(f)
Pocket Parks	0.62	Open Space/undeveloped	Benches	City of Bellevue		4(f)
Downtown Park	20.5	Community Park	Play area, formal gardens, benches	City of Bellevue		4(f)

TABLE F4.17-1

Parks and Recreational Facilities in Study Area

Name of Resource	Size (acres)	Type and/or Function	Facilities	Ownership <sup>a</sup>	Funding <sup>b</sup>	4(f) or 6(f) <sup>c</sup>
Ashwood Park	3.09	Neighborhood Park	Multi-use Field	City of Bellevue		4(f)
Library Plaza; part of the Bellevue Library	0.8	Mini Park	Benches	King County Library System		4(f)
McCormick Park planned extension from Bellevue Way SE to 106th Avenue NE (as part of 1200 Bellevue Way development)	2.69	Neighborhood Park	Walking paths, benches	City of Bellevue		4(f)
Proposed Neighborhood Park along Main Street	Unknown	Neighborhood Park	Purpose is to provide a green buffer area between the single-family residential areas south of Main Street and the high-density and commercial areas north of Main Street	NA		NA
BNSF Railway Trail (proposed)	See Segment B			BNSF Railway	(RCO - proposed)	NA
<b>Segment D, Bel-Red/Overlake</b>						
Highlands Park and Community Center	11.6	Community Park	Baseball field, softball field, tennis courts, play area, picnic tables, community center, skate park	City of Bellevue	RCO	4(f)
BNSF Railway Trail (proposed)	See Segment B			BNSF Railway	(RCO - proposed)	NA
<b>Segment E, Downtown Redmond</b>						
Redmond West Wetlands	4.4	Resource Park	Interpretive Trail	City of Redmond		4(f)
Town Center Open Space	44	Open Space	Walking Trail	PRR Redmond Retail (private)		NA
Luke McRedmond Landing	2.1	Resource Park	Picnic shelter, canoe launch, access to Sammamish River Trail	King County		4(f)
Anderson Park	2.8	Neighborhood Park	Play area, picnic shelter, log cabin rentals, public art	City of Redmond		4(f)
O'Leary Park	0.12	Resource Park	Plaza rest area with public art	City of Redmond		4(f)
Old Firehouse Teen Center	0.8	Resource Park	Teen Center Facility, including indoor media center and outdoor basketball court	City of Redmond		4(f)
Edge Skate Park	1.4	Resource Park	Graffiti wall, skate facility, picnic tables	City of Redmond		4(f)
Marymoor Park	640	Regional Park	Multipurpose recreational fields, velodrome, climbing rock, off-leash dog park, amphitheater	King County	RCO	4(f)
Sammamish River Trail Site	165.9	Regional Park	Bike racks, picnic tables	King County	RCO	4(f)
Sammamish River Trail	10.88 miles	Regional Trail	Paved trail with soft surface shoulders; equestrian use permitted; connects Marymoor Park with the Burke-Gilman Trail	King County	RCO	4(f)
Slough House Park	2.32	Community Park	None	City of Redmond	RCO	4(f)
East Lake Sammamish Trail (Built)	10.7 miles	Regional Trail – portions open	Interim soft-surface trail on BNSF Railway corridor	King County		4(f)

TABLE F4.17-1

Parks and Recreational Facilities in Study Area

Name of Resource	Size (acres)	Type and/or Function	Facilities	Ownership <sup>a</sup>	Funding <sup>b</sup>	4(f) or 6(f) <sup>c</sup>
BNSF Railway Trail (proposed)	See Segment B			BNSF Railway	(RCO - proposed)	NA
Bridle Crest Trail	2.1 miles	Neighborhood Trail	Soft surface, multiuse trail	King County/City of Redmond		4(f)
Bear Creek Trail	1.4 miles	Trail	Paved trail	City of Redmond	RCO	4(f)

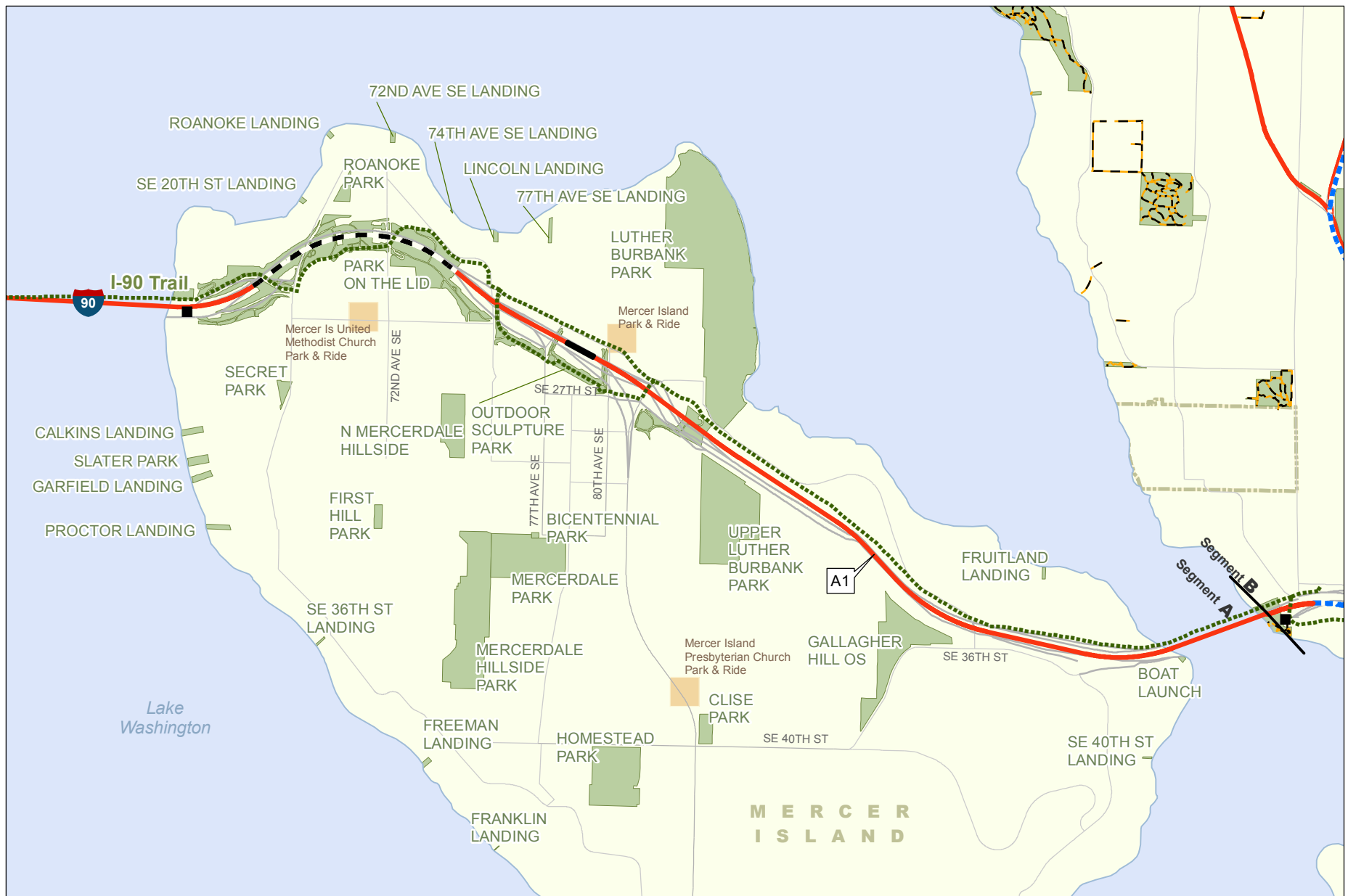
<sup>a</sup> WSDOT = Washington State Department of Transportation; DNR = Washington State Department of Natural Resources

<sup>b</sup> RCO = Recreation and Conservation Office/Washington State; LWCF = Land and Water Conservation Fund

<sup>c</sup> NA = not applicable

<sup>d</sup> The I-90 Trail portion is considered a transportation facility and therefore not declared a 4(f) resource-per USDOT letter to WSDOT November 25, 2002.





Source: City of Mercer Island (2006), City of Bellevue (2005), and King County (2006).

- WSDOT Trail
- Bellevue Trail
- Park
- Route at Grade
- Elevated Route
- Route in Retained-Cut
- Route in Tunnel

- TPSS Facility
- Proposed Station
- City Limit



0 0.25 Miles

Exhibit F4.17-2  
**Segment A**  
 Parks and Trails  
 East Link Project

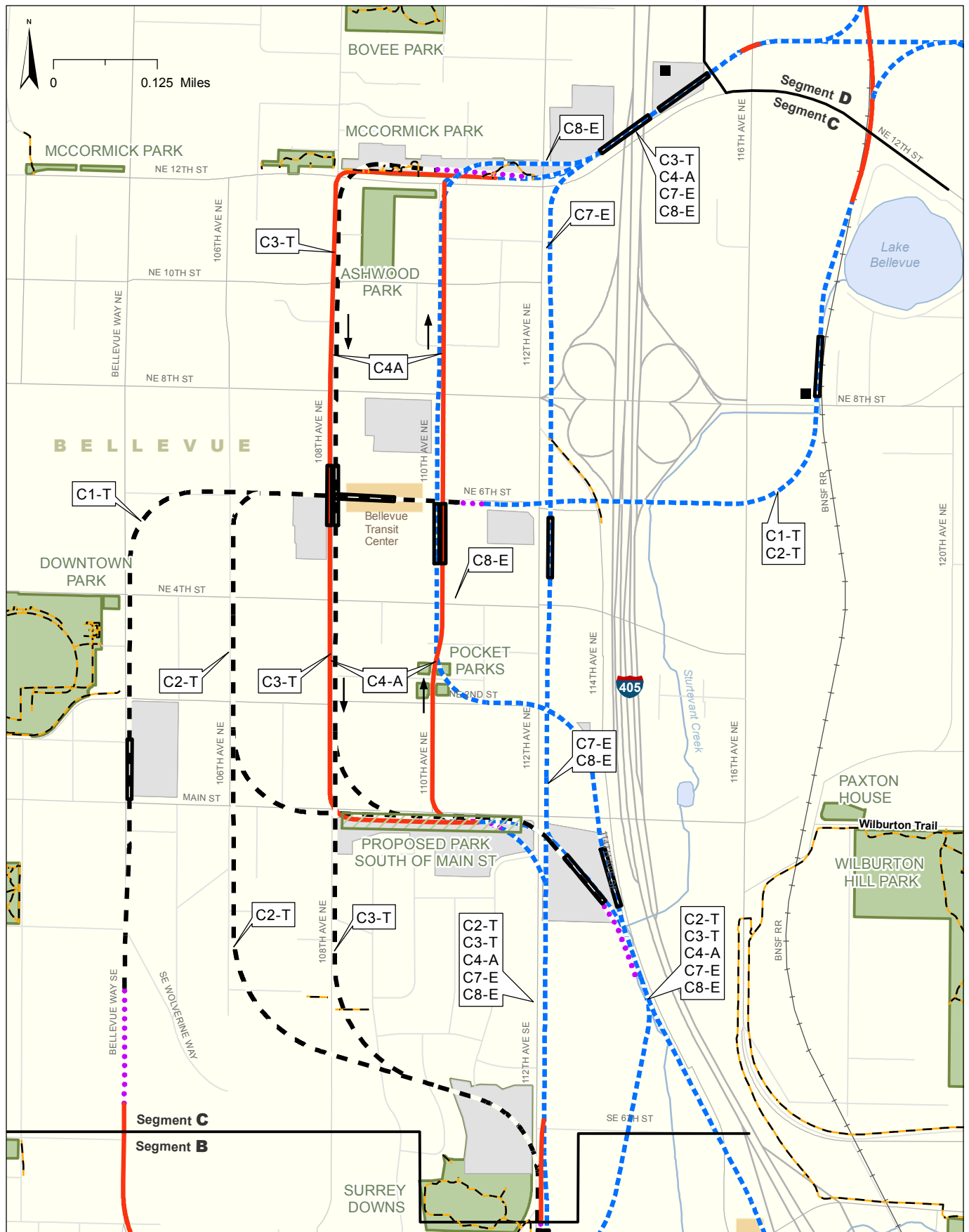


Source: City of Bellevue (2005) and King County (2006).

- |                |                       |                     |
|----------------|-----------------------|---------------------|
| WSDOT Trail    | Route At Grade        | TPSS Facility       |
| Bellevue Trail | Elevated Route        | Proposed Station    |
| Park           | Route in Retained-Cut | Tunnel Staging Area |
|                | Route in Tunnel       | City Limit          |

Exhibit F4.17-3  
**Segment B**  
 Parks and Trails  
 East Link Project



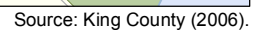


Source: City of Bellevue (2005) and King County (2006).

- |                      |                             |                       |
|----------------------|-----------------------------|-----------------------|
| ----- WSDOT Trail    | ----- Route At Grade        | ■ TPSS Facility       |
| ----- Bellevue Trail | ----- Elevated Route        | ▬ Proposed Station    |
| █ Park               | ..... Route in Retained-Cut | ▬ Tunnel Staging Area |
| ▨ Proposed Park      | ----- Route in Tunnel       | ▬ City Limit          |

Exhibit F4.17-4  
**Segment C**  
 Parks and Trails  
 East Link Project





- Exhibit F4.17-6  
**Segment E**  
Parks and Trails  
*East Link Project*