

Appendix F4.17

Park and Recreational Resources Inventory

TABLE F4.17-1
Parks and Recreational Facilities in Study Area

Resource Name	Size (acres)	Type and/or Function	Facilities	Ownership	Funding	4(f) or 6(f)
Segment A, Interstate 90						
Sturgus Park	2.0	Open space	Wooded hillside with trails; contains the I-90 Bicycle Trail	City of Seattle		4(f) ^a
Taejon Park	2.0	Open space	Wooded hillside with trails; contains the I-90 Bicycle Trail	City of Seattle		4(f) ^a
I-90 Lid Park (unnamed portion)		Open space	Wooded hillside; contains the I-90 Bicycle Trail	City of Seattle		4(f) ^a
Judkins Park and Playfield; part of the I-90 Lid	6.2	Community park	Picnic tables, paths, tennis courts, play area	City of Seattle, WSDOT	RCO	4(f)
Judge Charles M. Stokes Overlook; part of the I-90 Lid	5.2	Community park	Walking trail	WSDOT		4(f)
Benvenuto Viewpoint; part of the I-90 Lid	1.7	Viewpoint	None	WSDOT; City of Seattle		4(f)
Sam Smith Park; part of the I-90 Lid	15.2	Community park	Play area, picnic tables, tennis courts, off-leash dog park, art	WSDOT		4(f)
East Portal Viewpoint; part of the I-90 Lid	6.9	Viewpoint	Contains the I-90 Bicycle Trail	WSDOT		4(f)
South Day Street Park and Boat Ramp	3.9	Waterfront park	Waterfront access and boat dock under I-90	WSDOT, DNR		4(f)
Mercer Island; Park Lid	2.0	Landscape strips	None	WSDOT		NA
Outdoor sculpture gallery; part of the I-90 Lid	1.6, Part of Park on the Lid	Community park	Outdoor art, picnic benches	WSDOT, City of Mercer Island		4(f)
Gallagher Hill Open Space	11.3	Open space	None	City of Mercer Island		4(f)
Luther Burbank Park (includes Upper Luther Burbank Park)	77	Waterfront park, wilderness area	Play area, dog park, picnic and barbeque area, tennis court, basketball court, boat dock, fishing pier, swimming beach, amphitheater, pedestrian walkway over I-90, 3 miles of trails	City of Mercer Island		4(f)

TABLE F4.17-1 CONTINUED
Parks and Recreational Facilities in Study Area

Resource Name	Size (acres)	Type and/or Function	Facilities	Ownership	Funding	4(f) or 6(f)
Segment B, South Bellevue						
Enatai Beach Park	4.2	Neighborhood park	Dock, boat house, picnic area, seasonal canoe and kayak rentals; connection to the I-90 trail	City of Bellevue, WSDOT	RCO	4(f)
Mercer Slough Nature Park	320	Community park	Trails, visitor center, environmental education center, picnic areas, waterfront, canoe launch, blueberry farm, restrooms	City of Bellevue	RCO	4(f)
					LWCF	6(f)
Bellevue Way Greenbelt	0.37	Open space/undeveloped	Landscaping	City of Bellevue		N/A
BNSF Railway Trail (proposed)	North Renton to Snohomish	Regional trail	To include pedestrian and bicycle paths	Port of Seattle	(RCO - proposed)	NA
Segment C, Downtown Bellevue						
Surrey Downs Park	11.4	Neighborhood park	Trails, ball fields	City of Bellevue		4(f)
NE 2nd Pocket Parks	0.62	Open space/undeveloped	Benches	City of Bellevue		4(f)
Downtown Park	20.5	Community park	Play area, formal gardens, benches	City of Bellevue		4(f)
Ashwood Park	3.09	Neighborhood park	Multiuse field	City of Bellevue		4(f)
Library Plaza; part of the Bellevue Library	0.8	Mini park	Benches	King County Library System		4(f)
McCormick Park planned extension from Bellevue Way SE to 106th Avenue NE (as part of 1200 Bellevue Way development)	2.69	Neighborhood park	Walking paths, benches	City of Bellevue		4(f)
Proposed neighborhood park along Main Street	Unknown	Neighborhood park	Green buffer area between the single-family residential areas south of Main Street and the high-density and commercial areas north of Main Street	N/A		NA
BNSF Railway Trail (proposed)	See Segment B			BNSF Railway	(RCO - proposed)	NA

TABLE F4.17-1 CONTINUED
Parks and Recreational Facilities in Study Area

Resource Name	Size (acres)	Type and/or Function	Facilities	Ownership	Funding	4(f) or 6(f)
Segment D, Bel-Red/Overlake						
Highlands Park and Community Center	11.6	Community park	Baseball field, softball field, tennis courts, play area, picnic tables, community center, skate park	City of Bellevue	RCO	4(f)
BNSF Railway Trail (proposed)	See Segment B			BNSF Railway	(RCO - proposed)	NA
Bel-Red Subarea Plan parks and open space system	Unknown	Various	Proposed facilities include trails along stream corridors, urban and natural open space areas, community facilities, community and neighborhood parks, and cultural and arts features.	City of Bellevue, various		NA
Segment E, Downtown Redmond						
Redmond West Wetlands	4.4	Resource park	Interpretive trail	City of Redmond		4(f)
Town Center Open Space	44	Open space	Walking trail	PRR Redmond Retail (private)		NA
Luke McRedmond Landing	2.1	Resource park	Picnic shelter, canoe launch, access to Sammamish River Trail	King County		4(f)
Anderson Park	2.8	Neighborhood park	Play area, picnic shelter, log cabin rentals, public art	City of Redmond		4(f)
O'Leary Park	0.12	Resource park	Plaza rest area with public art	City of Redmond		4(f)
Old Firehouse Teen Center	0.8	Resource park	Teen center facility, including indoor media center and outdoor basketball court	City of Redmond		4(f)
Edge Skate Park	1.4	Resource park	Graffiti wall, skate facility, picnic tables	City of Redmond		4(f)
Marymoor Park	640	Resource park	Multipurpose recreational fields, velodrome, climbing rock, off-leash dog park, amphitheater, portion of the Sammamish River trail	King County	RCO	4(f)
Sammamish River Trail site	165.9	Resource park	Bicycle racks, picnic tables	King County	RCO	4(f)
Sammamish River Trail	10.88 miles	Regional trail	Paved trail with soft surface shoulders; equestrian use permitted; connects Marymoor Park with the Burke-Gilman Trail	King County	RCO	4(f)

TABLE F4.17-1 CONTINUED

Parks and Recreational Facilities in Study Area

Resource Name	Size (acres)	Type and/or Function	Facilities	Ownership	Funding	4(f) or 6(f)
Dudley Carter Park	2.32	Community park	None	City of Redmond	RCO	4(f)
East Lake Sammamish Trail (Built)	10.7 miles	Regional trail (portions open)	Interim soft-surface trail on BNSF Railway corridor	King County		4(f)
Redmond Central Connector-Proposed Trail (former BNSF)	3.9 miles	Regional trail	Paved multi-use trail on the BNSF Railway corridor	City of Redmond		4(f)
Bridle Crest Trail	2.1 miles	Neighborhood trail	Soft surface, multiuse trail	King County, City of Redmond		4(f)
Bear Creek Trail	1.4 miles	Trail	Paved trail	City of Redmond	RCO	4(f)

Notes:

^aThe I-90 Trail portion is considered a transportation facility and therefore not declared a 4(f) resource-per U.S. Department of Transportation letter to WSDOT November 25, 2002.

BNSF Burlington Northern Santa Fe

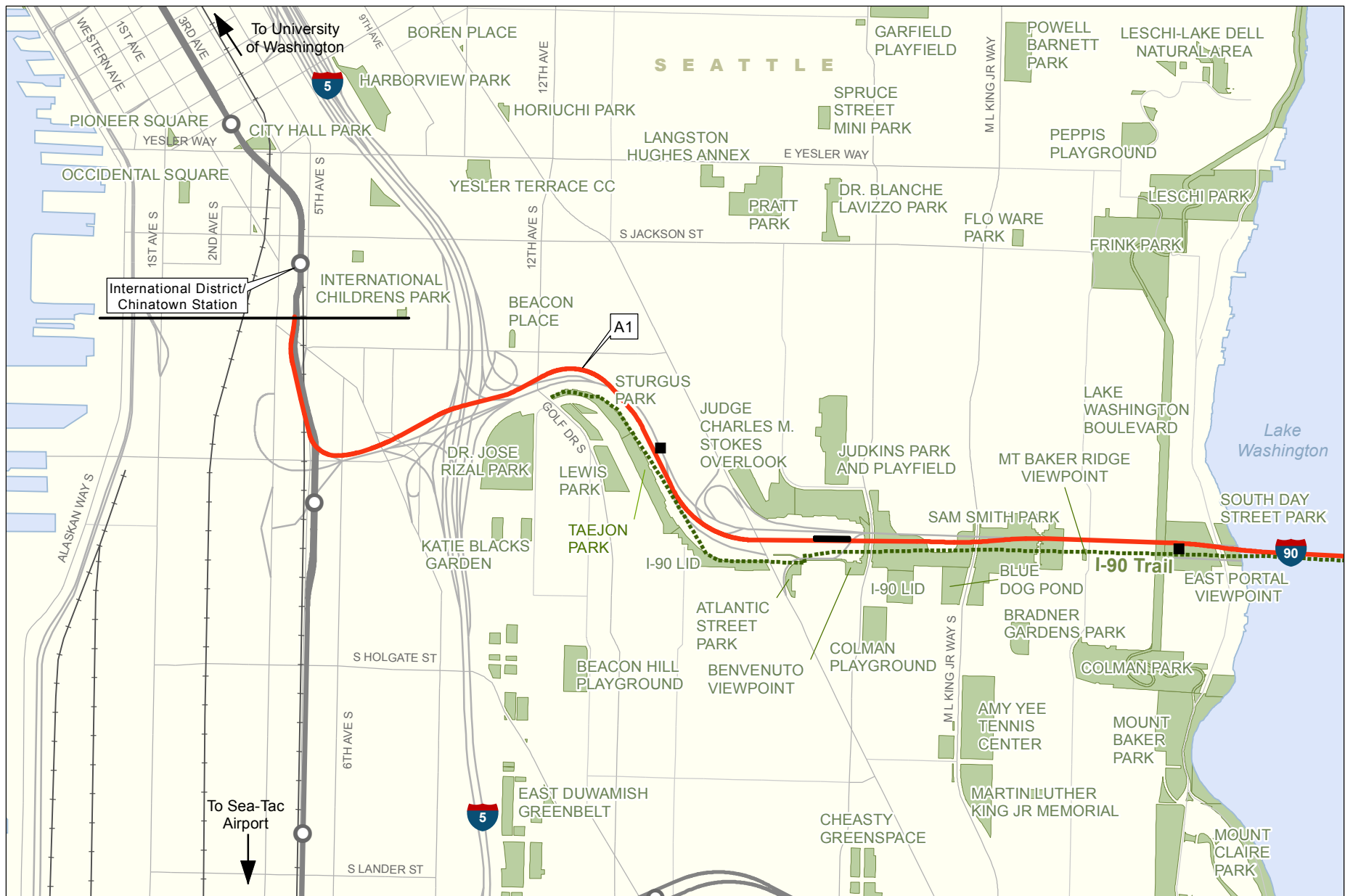
DNR Washington State Department of Natural Resources

LWCF Land and Water Conservation Fund

N/A Not applicable

RCO Recreation and Conservation Office/Washington State

WSDOT Washington State Department of Transportation

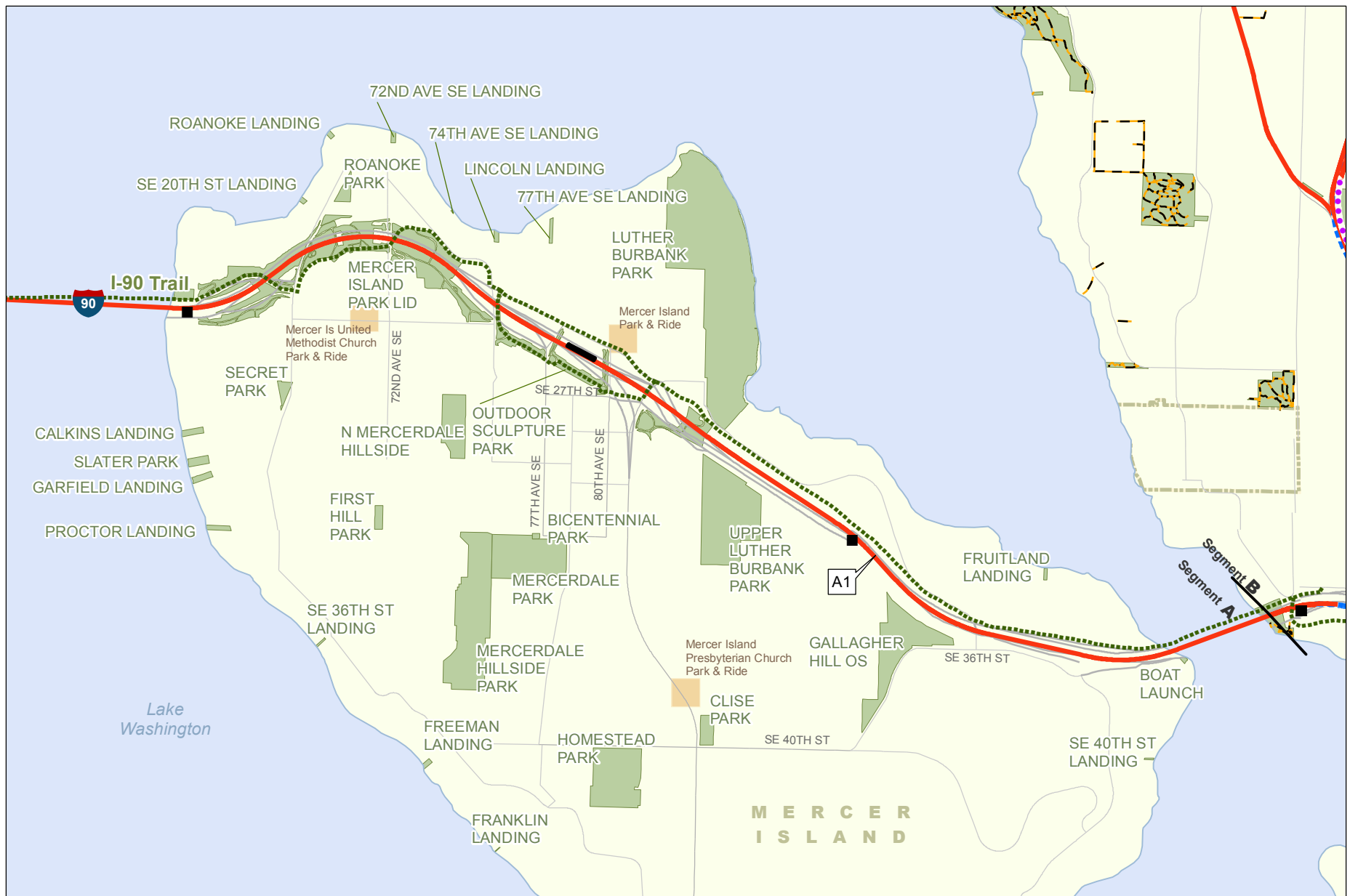


Source: City of Seattle (2002) and King County (2006).

- | | | |
|-------------------|-------------------------|-----------------------------|
| WSDOT Trail | — At-Grade Route | ■ Traction Power Substation |
| ■ Park | --- Elevated Route | ▬ Proposed Station |
| | ... Retained-Cut Route | — Central Link Alignment |
| | ... Retained-Fill Route | ▬ City Limit |
| | — Tunnel Route | |



Exhibit F4.17-1
Segment A
 Parks and Trails
 East Link Project



Source: City of Mercer Island (2006), City of Bellevue (2005), and King County (2006).

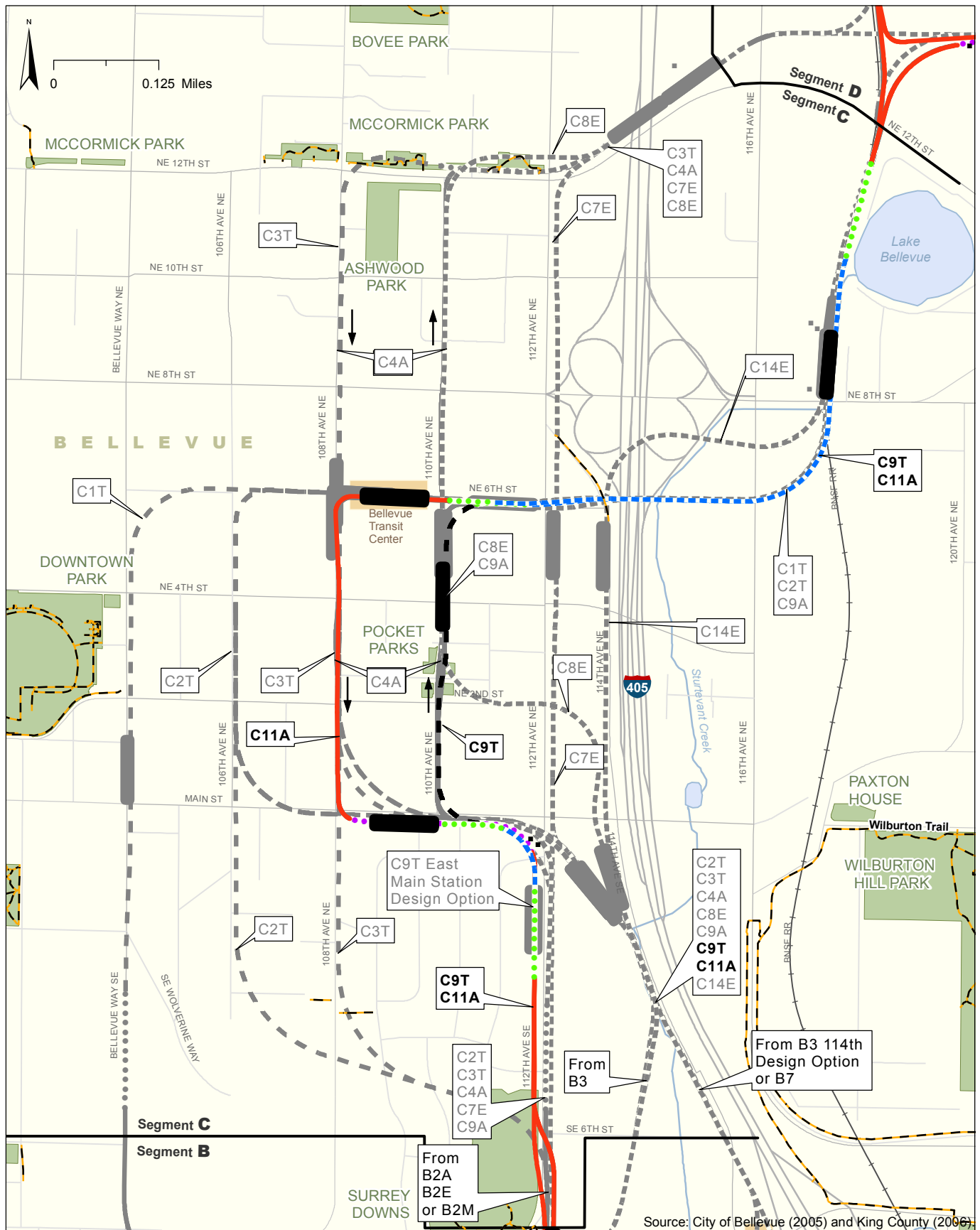
- | | | |
|----------------------|---------------------------|-----------------------------|
| ----- WSDOT Trail | ----- At-Grade Route | ■ Traction Power Substation |
| ----- Bellevue Trail | ----- Elevated Route | ▬ Proposed Station |
| ■ Park | ----- Retained-Cut Route | ----- City Limit |
| | ----- Retained-Fill Route | |
| | ----- Tunnel Route | |



0 0.25 Miles

Exhibit F4.17-2
Segment A
 Parks and Trails
 East Link Project





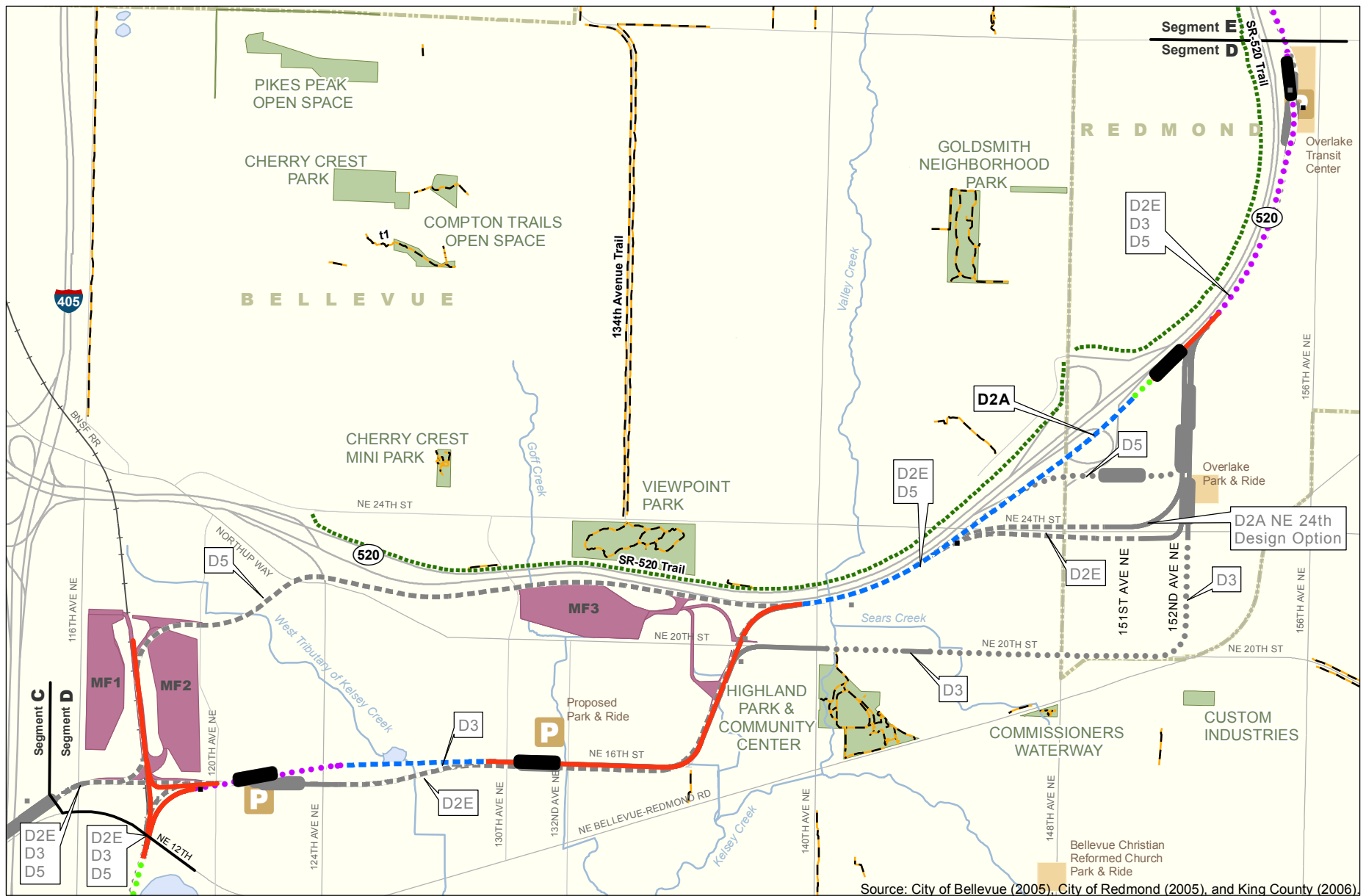
- Preferred Alternative** **C9T**
- At-Grade Route
 - Elevated Route
 - Retained-Cut Route
 - Retained-Fill Route
 - Tunnel Route

- Other Alternatives** **C14E**
- At-Grade Route
 - Elevated Route
 - Retained-Cut or Retained-Fill Route
 - Tunnel Route

- WSDOT Trail
- Bellevue Trail
- Park

- Traction Power Substation
- Proposed Station
- City Limit

Exhibit F4.17-4
Segment C
 Parks and Trails
 East Link Project



Preferred Alternative

- At-Grade Route
- Elevated Route
- Retained-Cut Route
- Retained-Fill Route
- Tunnel Route

Other Alternatives

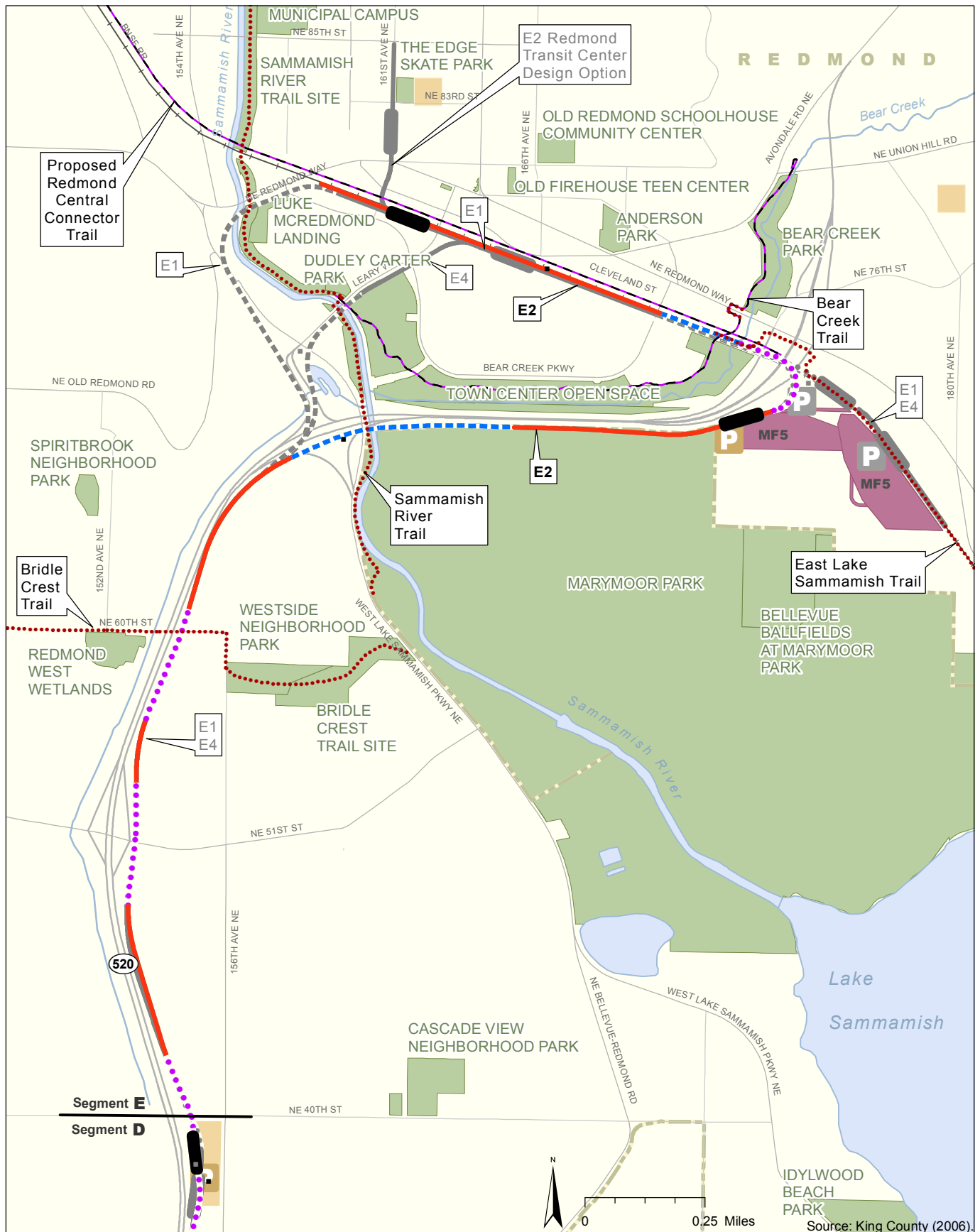
- At-Grade Route
- Elevated Route
- Retained-Cut or Retained-Fill Route
- Tunnel Route

— WSDOT Trail
— Bellevue Trail
 Park
 Traction Power Substation
 Maintenance Facility
 Proposed Station
 City Limit

Source: City of Bellevue (2005), City of Redmond (2005), and King County (2006).

0 0.25 0.5 Miles

Exhibit F4.17-5
Segment D
 Parks and Trails
 East Link Project



- Preferred Alternative** E2
- At-Grade Route
 - - - Elevated Route
 - · · Retained-Cut Route
 - · · Retained-Fill Route
 - Tunnel Route

- Other Alternatives** E1
- At-Grade Route
 - - - Elevated Route
 - · · Retained-Cut or Retained-Fill Route
 - Tunnel Route

- · · King County Trail
- Redmond Trail
- Park

- Traction Power Substation
- Proposed Station
- Maintenance Facility
- City Limits

Exhibit F4.17-6
Segment E
 Parks and Trails
 East Link Project

Source: King County (2006).