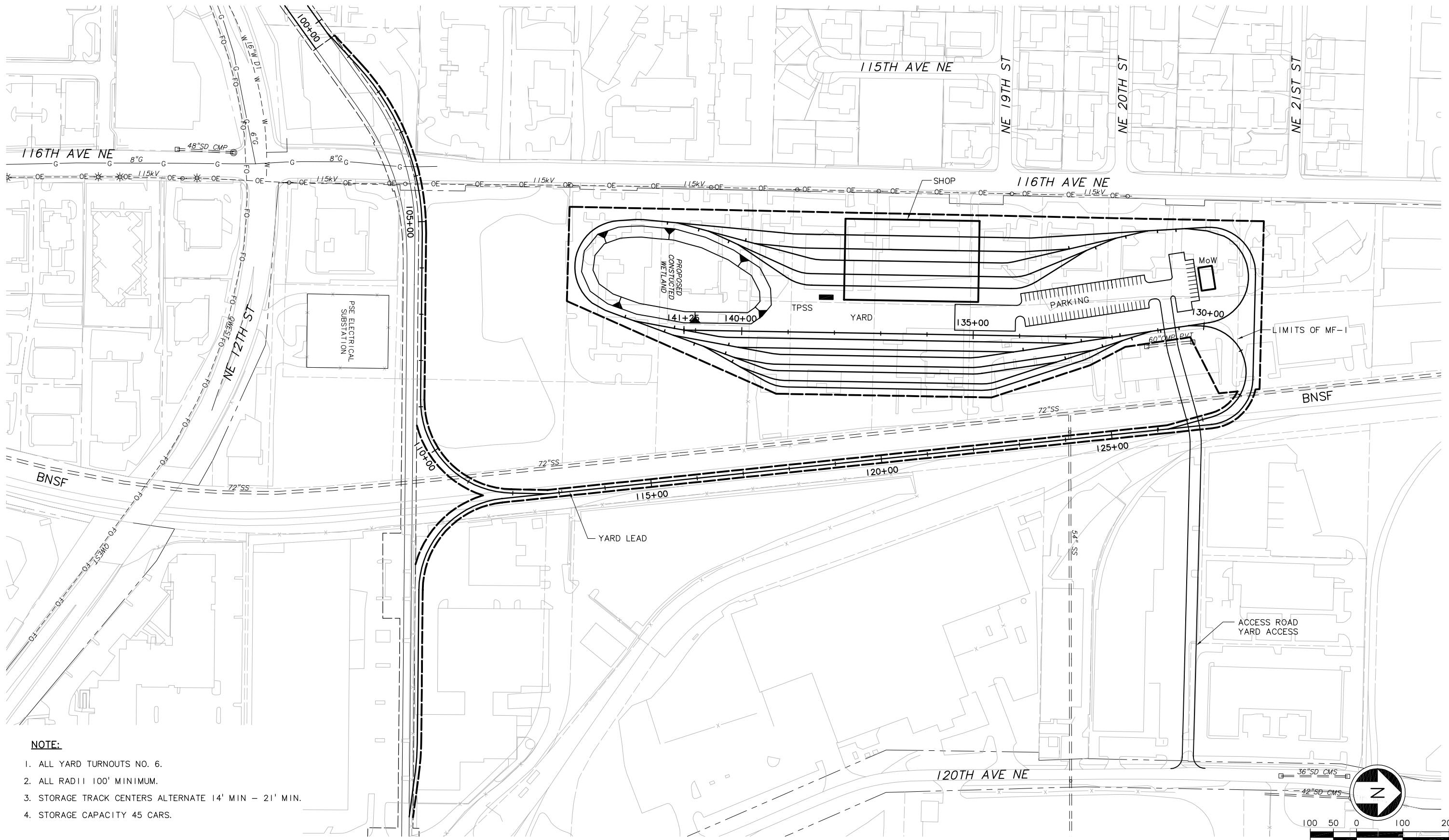
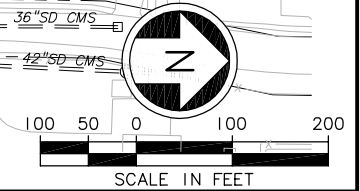


XREF'S
 Resolved
 x0531UT
 x0534UT
 x0831UT
 x0834UT
 ELC_C8E_KA
 ELD_D0_MF-1
 ELD_D2A_KA
 ELD_D2E_US
 REG-DCON
 Zg-2234h
 x0531rx
 x0531sf
 x0534rx
 x0534sf
 x0831rx
 x0831sf
 x0834rx
 x0834sf
 Unresolved
 key_East
 LTSCALE
 1=1



- NOTE:**
1. ALL YARD TURNOUTS NO. 6.
 2. ALL RADII 100' MINIMUM.
 3. STORAGE TRACK CENTERS ALTERNATE 14' MIN - 21' MIN.
 4. STORAGE CAPACITY 45 CARS.



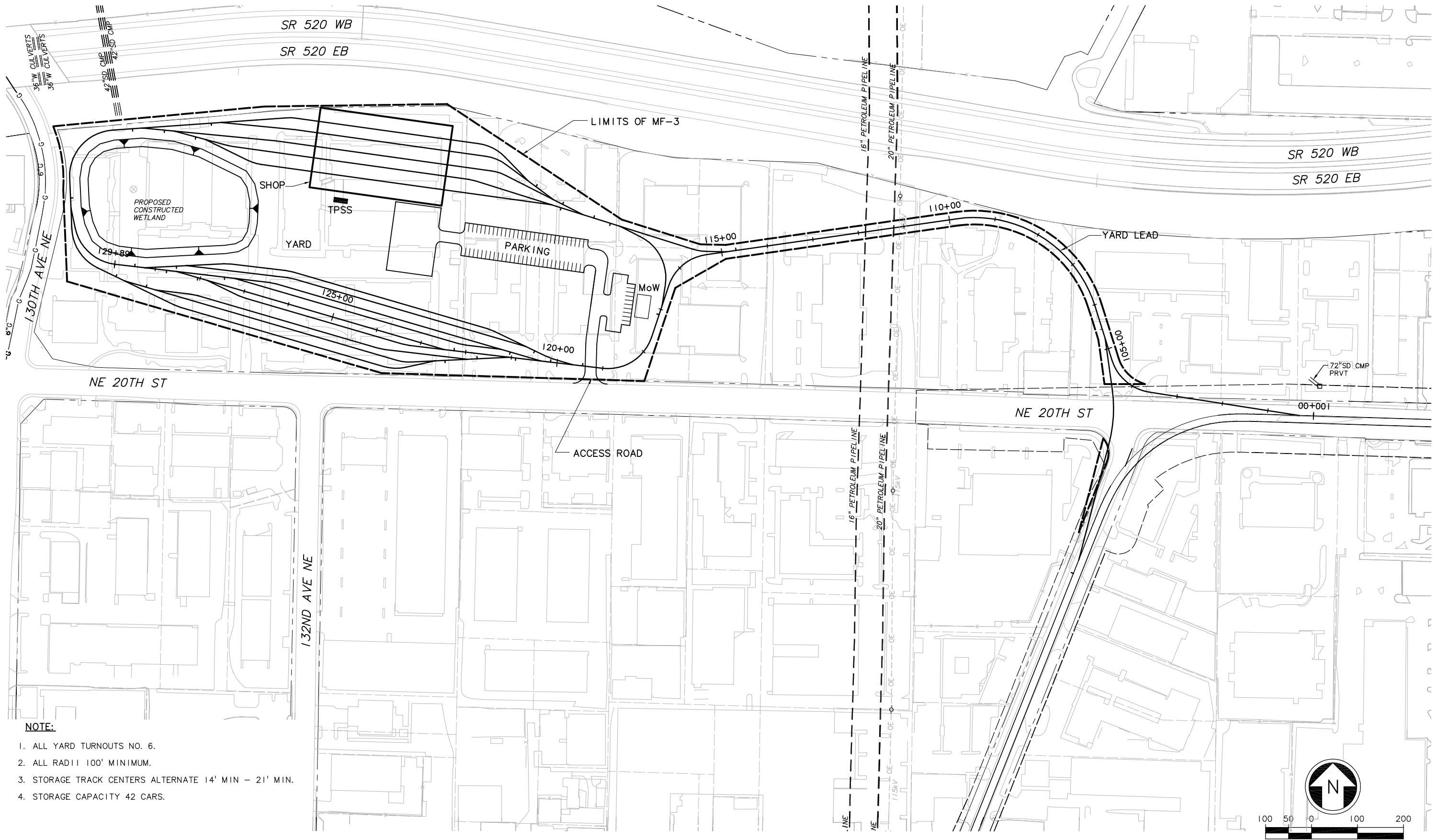
c:\work\ELD\100_MPO1.dwg
 10/16/08 10:35 : eackerm OE5396

No.	Date	Dsn.	Chk.	App.	Revisions

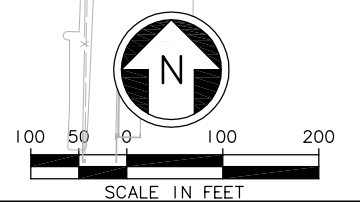
FEIS CONCEPTUAL	Designed By:	CH2MHILL <small>IN ASSOCIATION WITH</small> PARSONS & INCA <small>ENGINEERS INC.</small>		Scale:	1" = 100'
	Drawn By:			Filename:	ELD100_MPO1.dwg
	Checked By:			Contract No.:	EL_SEG_D
	Approved By:			Date:	
Submitted:	Date:	Approved:	Date:	Date:	

EAST LINK PROJECT SEGMENT D MAINTENANCE FACILITY MF1 - D2A, D2E & D3 LAYOUT & SITE PLAN			Drawing No.: DO_-MPO1 Sheet No.: D-94
--	--	--	--

XREF'S
 Resolved
 x1131UT
 x1134UT
 x1431UT
 x1434UT
 ELD_D3_KA
 ELD_D3_MF_3
 ELD_D3_US
 REG-DCON
 Zg-2234h
 x1131rx
 x1131sf
 x1134rx
 x1134sf
 x1431rx
 x1431sf
 x1434rx
 x1434sf
 Unresolved
 key_East
 L7SCALE
 1=1



- NOTE:**
1. ALL YARD TURNOUTS NO. 6.
 2. ALL RADII 100' MINIMUM.
 3. STORAGE TRACK CENTERS ALTERNATE 14' MIN - 21' MIN.
 4. STORAGE CAPACITY 42 CARS.



No.	Date	Dsn.	Chk.	App.	Revisions

**FEIS
CONCEPTUAL**

CH2MHILL
 IN ASSOCIATION WITH
PARSONS & INCA
 ENGINEERS INC.

Submitted: _____ Date: _____ Approved: _____ Date: _____

SOUNDTRANSIT

Scale: 1" = 100'

Filename: ELD1D3_MP01.dwg
 Contract No.: EL_SEG_D

Scale: 1" = 100'

Filename: ELD1D3_MP01.dwg
 Contract No.: EL_SEG_D

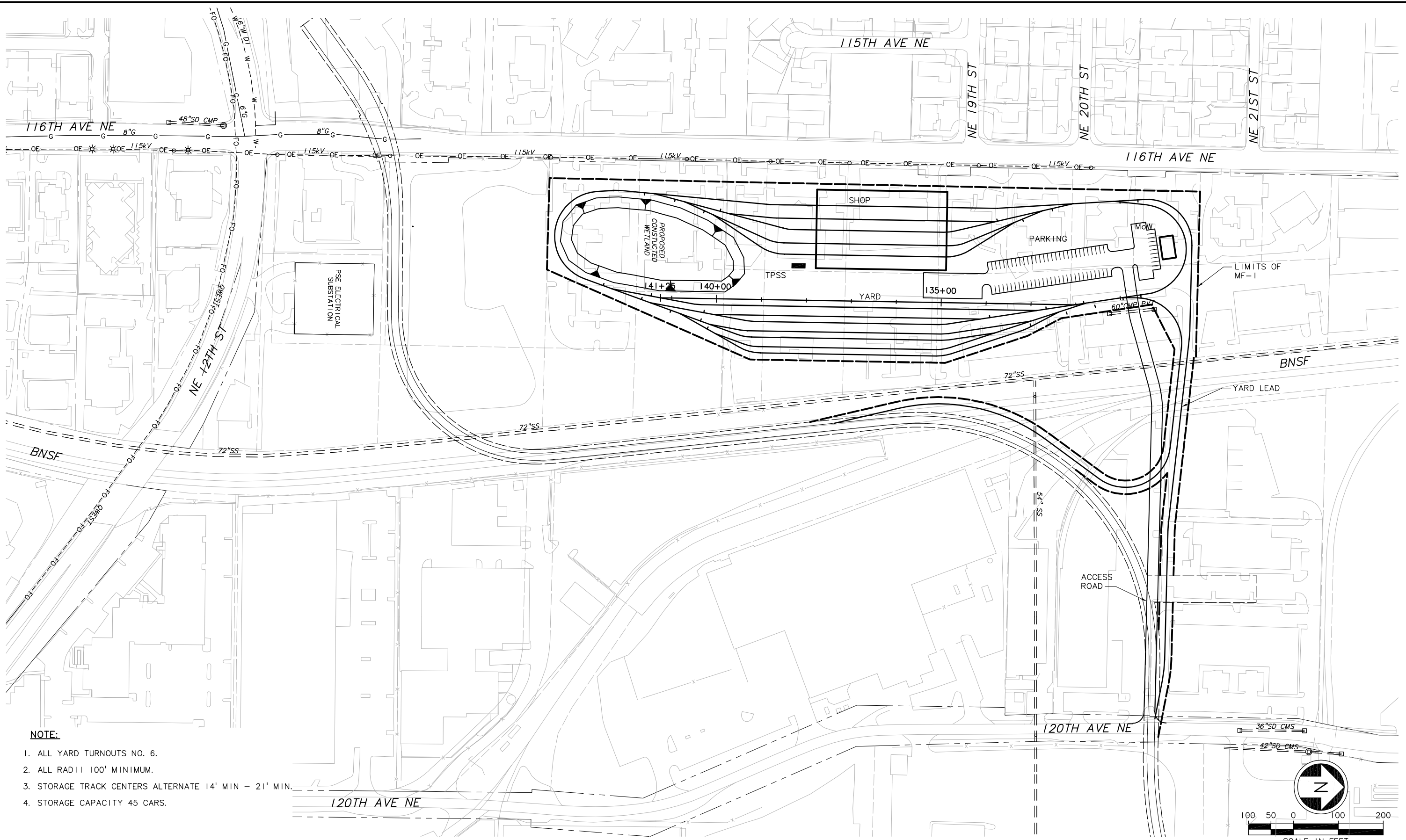
**EAST LINK PROJECT
 SEGMENT D
 MAINTENANCE FACILITY
 MF3 - D3
 LAYOUT & SITE PLAN**

Drawing No.: **D3_-MP01**
 Sheet No.: _____ Rev.: _____
D-97

c:\work\ELD1D3_MP01.dwg
 10/16/08 10:54 : eackerm OE5396

XREF'S
 Resolved
 x0531UT
 x0534UT
 x0831UT
 x0834UT
 ELD_D5_KA
 ELD_D5_MF_1
 ELD_D5_US
 REG-DCON
 Z9-2234h
 x0531rx
 x0531sf
 x0534rx
 x0534sf
 x0831rx
 x0831sf
 x0834rx
 x0834sf
 Unresolved

LTSCALE
 1=1



- NOTE:**
1. ALL YARD TURNOUTS NO. 6.
 2. ALL RADIUS 100' MINIMUM.
 3. STORAGE TRACK CENTERS ALTERNATE 14' MIN - 21' MIN.
 4. STORAGE CAPACITY 45 CARS.

c:\work\ELD\ID5_MP01.dwg
 10/16/08 11:01 : eackerm OE5396

No.	Date	Dsn.	Chk.	App.	Revisions

**FEIS
 CONCEPTUAL**

CH2MHILL
 IN ASSOCIATION WITH
PARSONS & INCA
 ENGINEERS INC.

Submitted: _____ Date: _____ Approved: _____ Date: _____

SOUNDTRANSIT

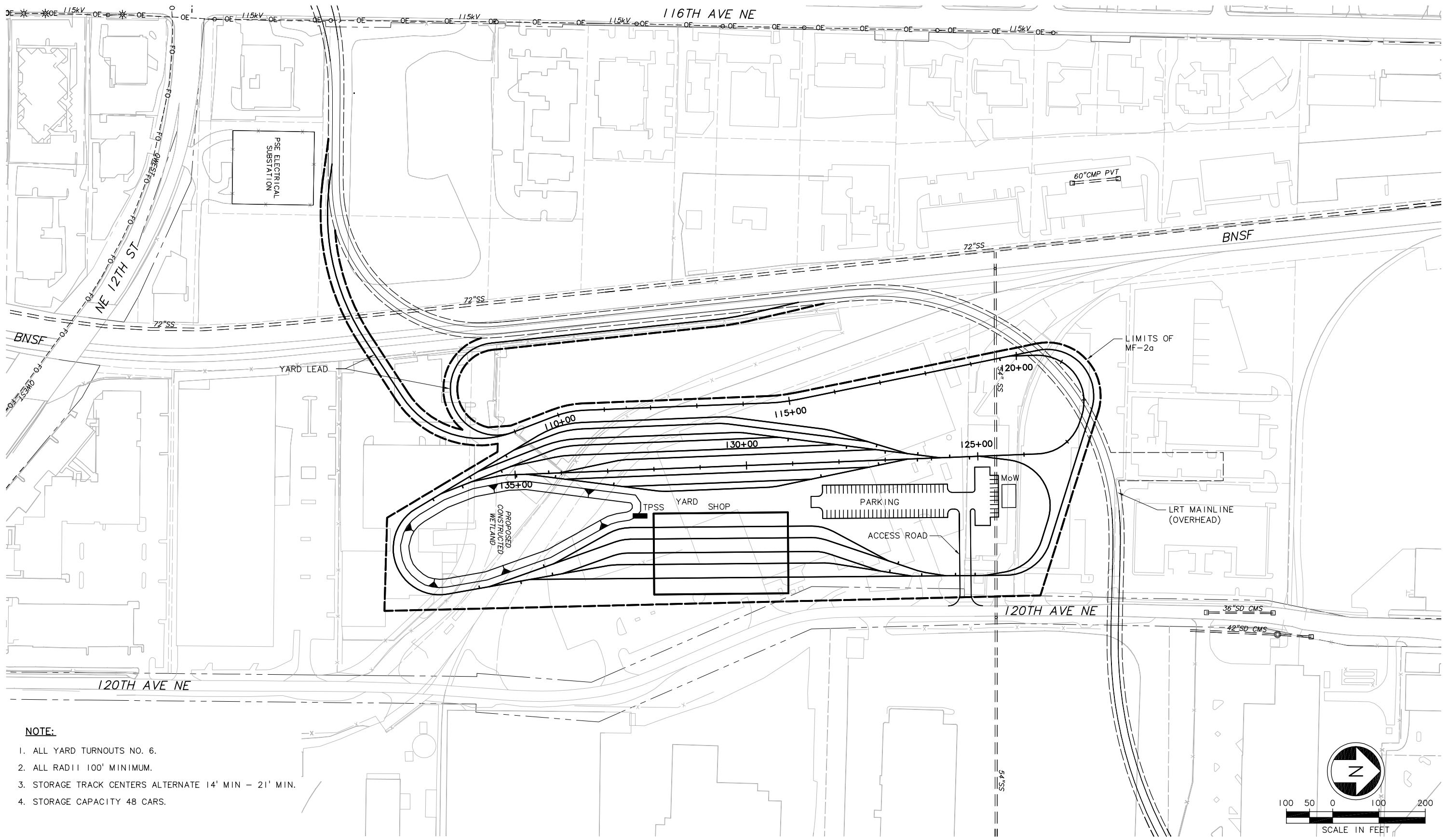
Submitted: _____ Date: _____ Approved: _____ Date: _____

Scale: 1" = 100'
 Filename: ELD\ID5_MP01.dwg
 Contract No.: EL_SEG_D
 Date: _____

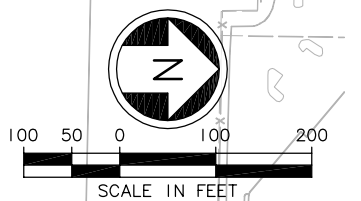
**EAST LINK PROJECT
 SEGMENT D
 MAINTENANCE FACILITY
 MFI - D5
 LAYOUT & SITE PLAN**

Drawing No.: **D5_-MP01**
 Sheet No.: _____ Rev.: _____
D-98

XREF'S
 Resolved
 x0531UT
 x0534UT
 x0831UT
 x0834UT
 ELD_D5_KA
 ELD_D5_MF_2
 ELD_D5_US
 REG-DCON
 Zg-2234h
 x0531rx
 x0531sf
 x0534rx
 x0534sf
 x0831rx
 x0831sf
 x0834rx
 x0834sf
 Unresolved
 key_East
 LTSCALE
 1=1



- NOTE:**
1. ALL YARD TURNOUTS NO. 6.
 2. ALL RADII 100' MINIMUM.
 3. STORAGE TRACK CENTERS ALTERNATE 14' MIN - 21' MIN.
 4. STORAGE CAPACITY 48 CARS.



c:\work\ELD\ID5_MP02.dwg
 10/16/08 11:01 : eackerm OE5396

No.	Date	Dsn.	Chk.	App.	Revisions

FEIS
CONCEPTUAL

Designed By:
 Drawn By:
 Checked By:
 Approved By:

CH2MHILL
 IN ASSOCIATION WITH
PARSONS & INCA
 ENGINEERS INC.

Submitted: _____ Date: _____ Approved: _____ Date: _____

SOUNDTRANSIT

Scale: 1" = 100'
 Filename: ELD\ID5_MP02.dwg
 Contract No.: EL_SEG_D

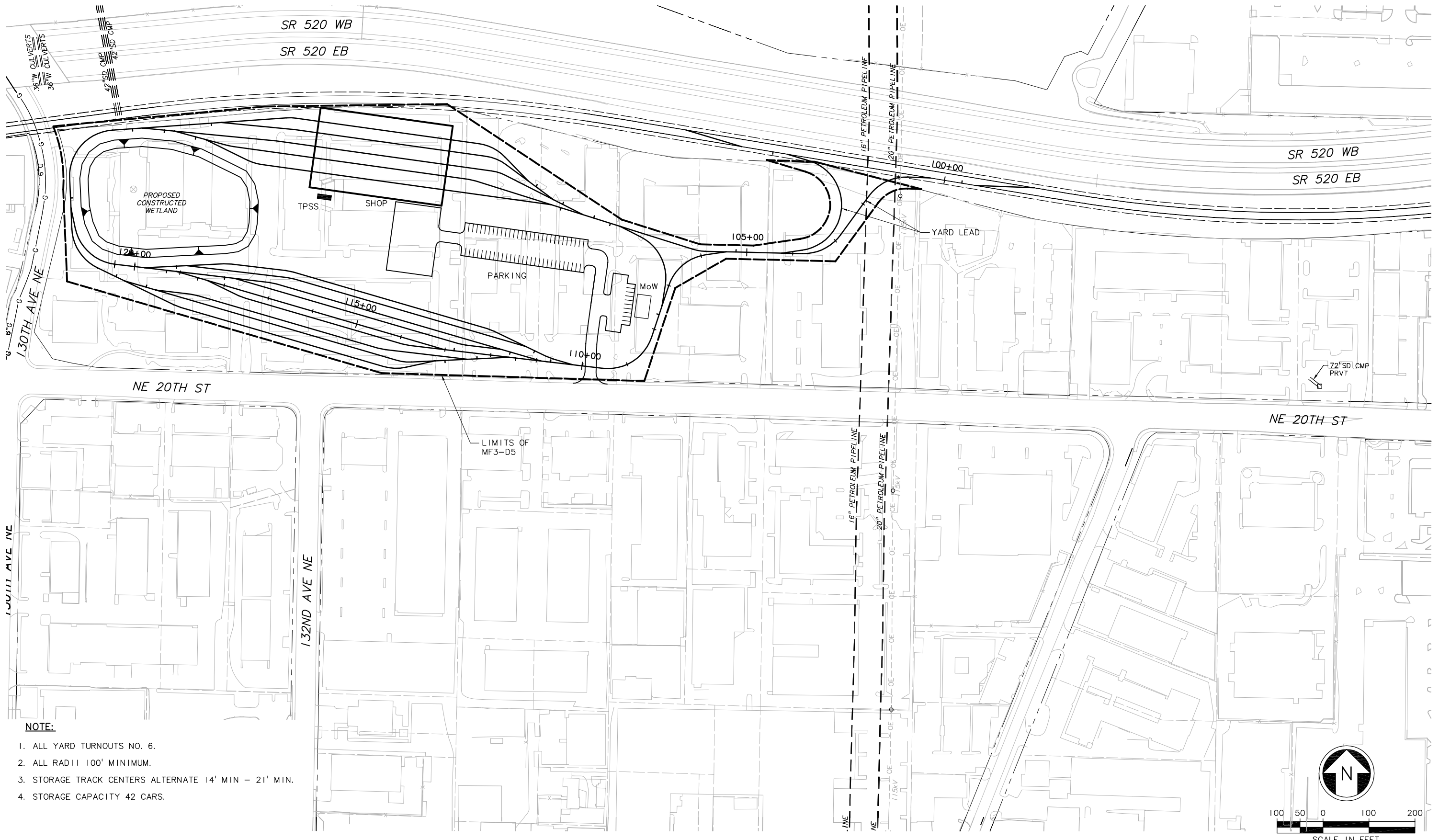
Date:	
-------	--

**EAST LINK PROJECT
 SEGMENT D
 MAINTENANCE FACILITY
 MF2a - D5
 LAYOUT & SITE PLAN**

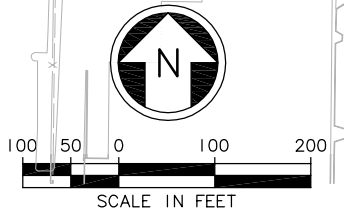


Drawing No.:	D5_-MP02
Sheet No.:	D-99
Rev.:	

XREF'S
 Resolved
 x1131UT
 x1134UT
 x1431UT
 x1434UT
 ELD_D5_KA
 ELD_D5_MF_3
 ELD_D5_US
 ELE_EX_KA
 REG-DCON
 Zg-2234h
 x1131rx
 x1131sf
 x1134rx
 x1134sf
 x1431rx
 x1431sf
 x1434rx
 x1434sf
 Unresolved
 key_East
 LTSCALE
 1=1



- NOTE:**
1. ALL YARD TURNOUTS NO. 6.
 2. ALL RADII 100' MINIMUM.
 3. STORAGE TRACK CENTERS ALTERNATE 14' MIN - 21' MIN.
 4. STORAGE CAPACITY 42 CARS.



c:\work\ELD1D5_MP03.dwg
 10/16/08 11:02 : eackerm OE5396

No.	Date	Dsn.	Chk.	App.	Revisions

Designed By:
 Drawn By:
 Checked By:
 Approved By:

**FEIS
 CONCEPTUAL**

CH2MHILL
 IN ASSOCIATION WITH
PARSONS & INCA
 ENGINEERS INC.

Submitted: _____ Date: _____
 Approved: _____ Date: _____

SOUNDTRANSIT

Scale: 1" = 100'
 Filename: ELD1D5_MP03.dwg
 Contract No.: EL_SEG_D
 Date: _____

**EAST LINK PROJECT
 SEGMENT D
 MAINTENANCE FACILITY
 MF3 - D5
 LAYOUT & SITE PLAN**

Drawing No.: **D5_-MP03**
 Sheet No.: _____ Rev.: _____
D-100