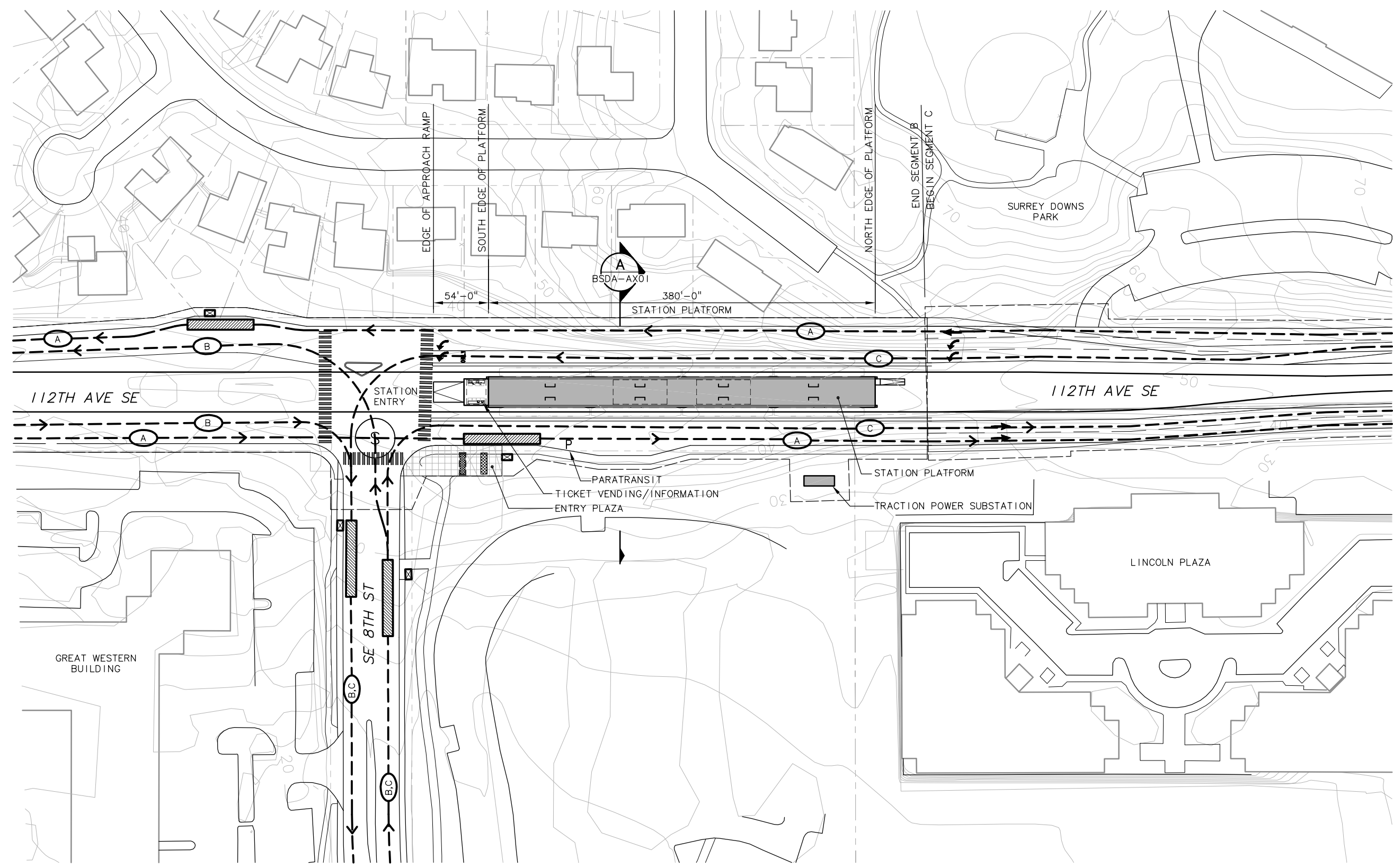


XREF'S  
 Resolved  
 ELB\_B2A\_KA  
 ELB\_B2A\_CM  
 ELB\_B2A\_VO  
 ELB\_BSDA\_AP  
 ELB\_BSDA\_AS  
 ELB\_BSDA\_AZ  
 ELC\_C4A\_CM  
 ELC\_C4A\_VO  
 ELC\_C4A\_KA  
 REG-DOON  
 X05250N  
 X05250F  
 ZC-2234H  
 X05250x  
 Unresolved  
 X05250P  
 X05250T  
 X05250G  
 LTSCALE  
 1=1

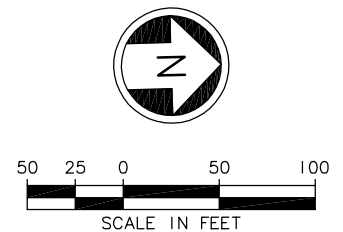
**NOTES**  
 1. ALIGNMENT B2A & C4A,  
 ALIGNMNET B2A & C7E,  
 ALIGNMNET B2A & C8E



**SYMBOLS KEY**

- NEW BUS STOP
- NEW BUS SHELTER
- PARATRANSIT STOP
- BUS ROUTE : 240
- BUS ROUTE : 111, 114, 560
- BUS ROUTE : 243, 342
- BIKE STORAGE
- BIKE SHELTER/RACKS
- PAVED AREA
- TICKET VENDING/INFORMATION
- CROSSWALK
- TRACK
- TRAIN

**STATION ACCESS PLAN**  
 SCALE: 1" = 50'



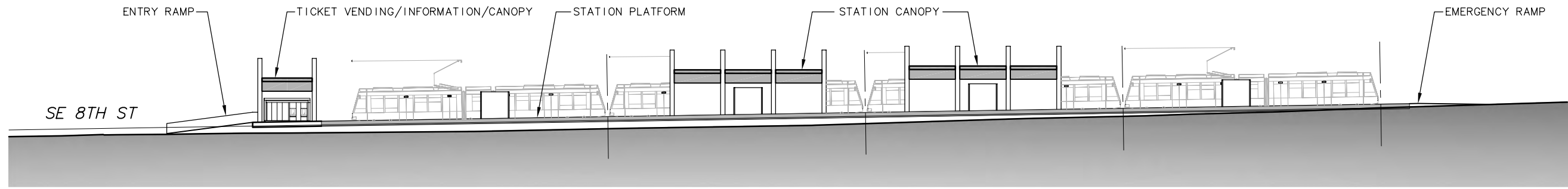
c:\work\ELB\BSDA\_AS01.dwg  
 10/16/08 08:55 : eackerm OE5396

No.	Date	Dsn.	Chk.	App.	Revisions

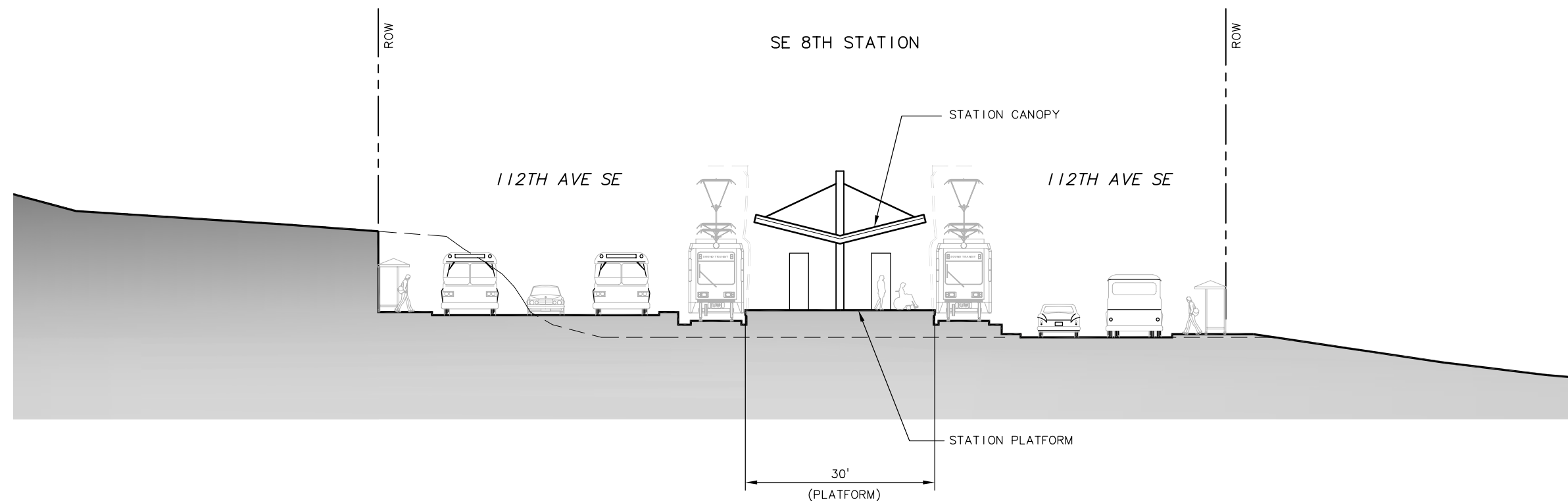
<b>FEIS CONCEPTUAL</b>	Designed By:	<b>CH2MHILL</b> IN ASSOCIATION WITH <b>PARSONS &amp; INCA ENGINEERS INC.</b>	 STREETER & ASSOCIATES ARCHITECTS AIA • PLLC 188 UNIVERSITY STREET SEATTLE, WA 98101-2901 (FAO) 206-427-7715	 <b>SOUNDTRANSIT</b>	Scale:	1"=50'-0"
	Drawn By:				Filename:	ELB\BSDA_AS01.dwg
	Checked By:				Contract No.:	EL_SEG_B
	Approved By:				Date:	Date:

<b>EAST LINK PROJECT SEGMENT B</b>		Drawing No.:	BSDA-AS01
SE 8TH STATION 112TH AT-GRADE ALTERNATIVE B2A STATION ACCESS PLAN		Sheet No.:	B-85
		Rev.:	

XREF'S  
 Resolved  
 ELB\_BSDA\_AX  
 REG-DCON  
 ZG-2234H  
 Unresolved  
 L7SCALE  
 1=1



**ELEVATION**  
 SCALE: 1" = 20'



**SECTION LOOKING NORTH**  
 SCALE: 1" = 10'  
 A  
 BSDA-AX01  
 BSDA-AS01



c:\work\ELB\BSDA\_AX01.dwg  
 10/16/08 08:55 : eackerm OE5396

No.	Date	Dsn.	Chk.	App.	Revisions

Designed By:  
 Drawn By:  
 Checked By:  
 Approved By:

**FEIS  
 CONCEPTUAL**

**CH2MHILL**  
 IN ASSOCIATION WITH  
**PARSONS & INCA**  
 ENGINEERS INC.

**STREETER & ASSOCIATES**  
 ARCHITECTS AIA • PLLC  
 185 UNIVERSITY STREET SEATTLE, WA 98101-2901  
 206-421-9270 (FAX) 206-421-7715

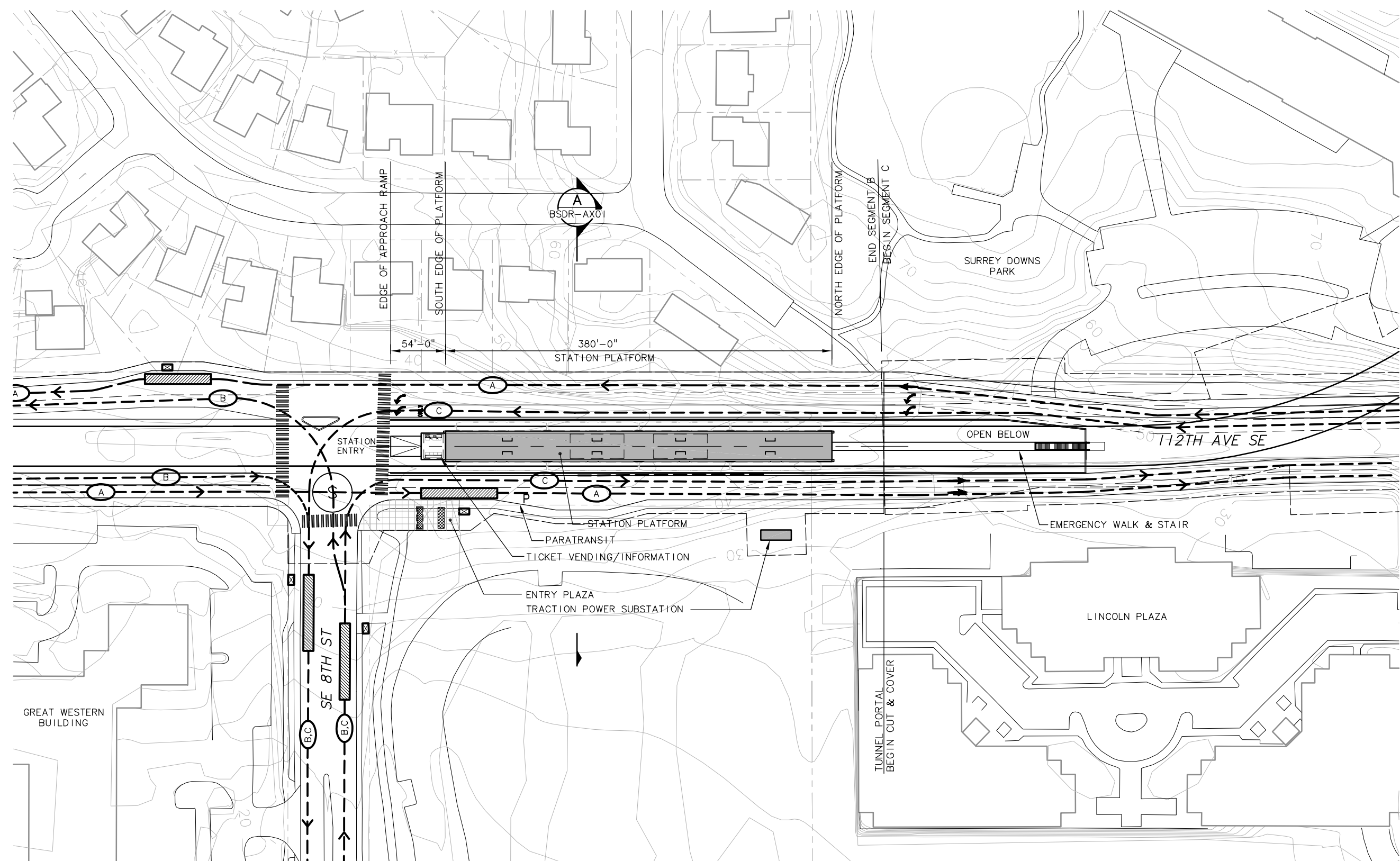
**SOUNDTRANSIT**

Scale: VARIES  
 Filename: ELB\BSDA\_AX01.dwg  
 Contract No.: EL\_SEG\_B

**EAST LINK PROJECT  
 SEGMENT B**  
 SE 8TH STATION  
 112TH AT-GRADE ALTERNATIVE B2A  
 ELEVATION AND SECTION

Drawing No.: **BSDA-AX01**  
 Sheet No.: **B-86**  
 Rev.:

XREF'S  
 Resolved  
 ELB\_B2A\_KA  
 ELB\_B2A\_CM  
 ELB\_B2A\_JO  
 ELB\_BSDR\_AP  
 ELB\_BSDR\_AS  
 ELB\_BSDR\_AZ  
 ELC\_C3T\_JO  
 ELC\_C3T\_KA  
 ELC\_C4A\_CM  
 ELC\_C4A\_JO  
 ELC\_C4A\_KA  
 REG-DCON  
 X0225CN  
 X0225SF  
 X0525CN  
 X0525SF  
 ZG-2234H  
 X0225rx  
 X0525rx  
 Unresolved  
 X0225OP  
 X0225UT  
 X0225VG  
 X0525OP  
 X0525UT  
 X0525VG  
 L7SCALE  
 1"=1'

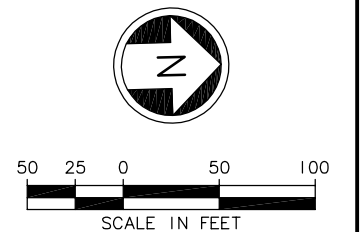


**NOTES**  
 1. ALIGNMENT B2A AND C2T & 3T

**SYMBOLS KEY**

	NEW BUS STOP
	EXISTING BUS STOP
	NEW BUS SHELTER
	PARATRANSIT STOP
	BUS ROUTE : 240
	BUS ROUTE : 111, 114, 560
	BUS ROUTE : 243, 342
	BIKE STORAGE
	BIKE SHELTER/RACKS
	PAVED AREA
	TICKET VENDING/INFORMATION
	CROSSWALK
	TRACK
	TRAIN

**STATION ACCESS PLAN**  
 SCALE: 1" = 50'

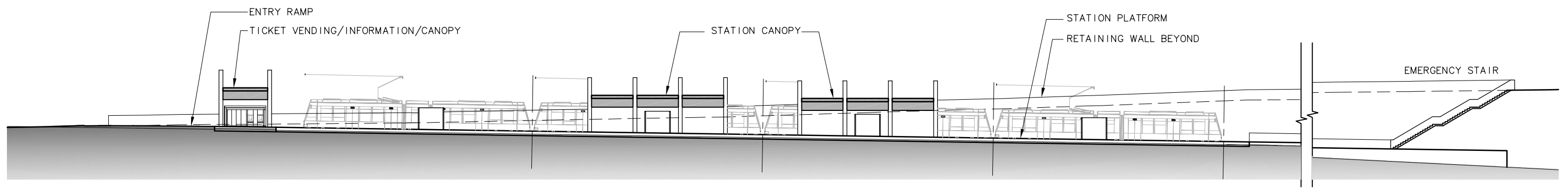


c:\work\ELB\IBSDR\_AS01.dwg  
 10/16/08 08:59 : eackerm OE5396

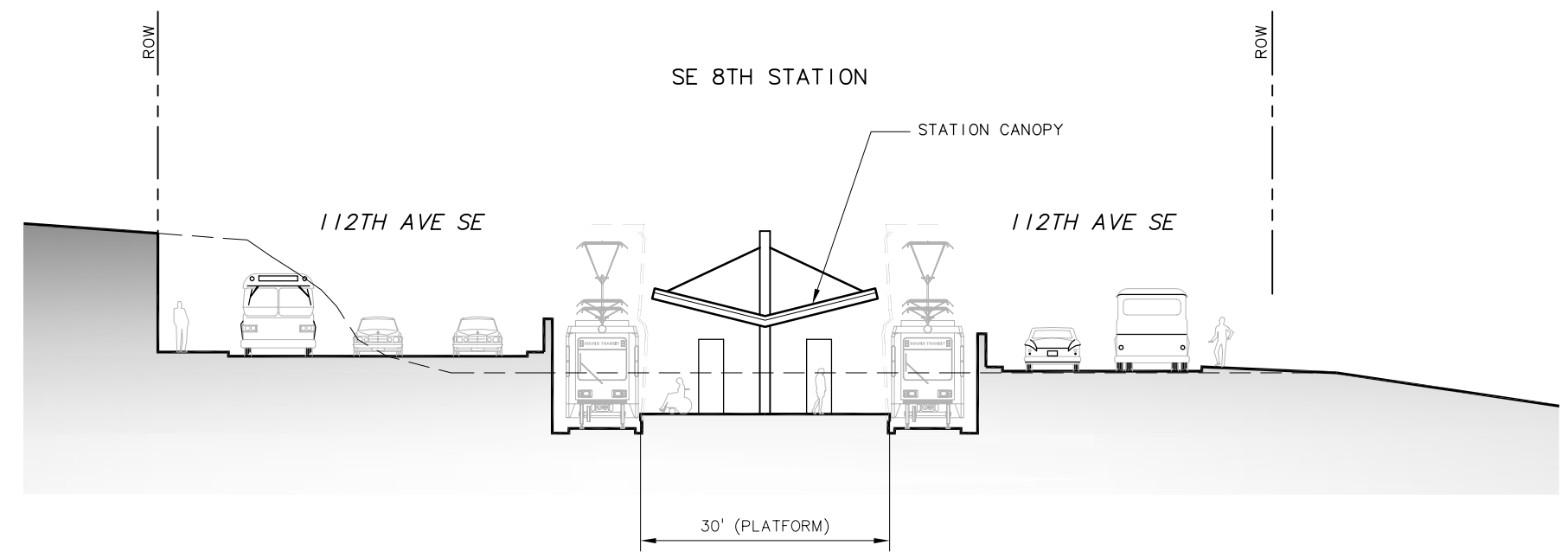
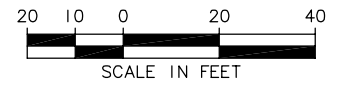
Designed By:					
Drawn By:					
Checked By:					
Approved By:					
No.	Date	Dsn.	Chk.	App.	Revisions

<b>FEIS CONCEPTUAL</b>	<b>CH2MHILL</b>				Scale: 1"=50'-0"	<b>EAST LINK PROJECT SEGMENT B</b>		Drawing No.: <b>BSDR-AS01</b>
	IN ASSOCIATION WITH <b>PARSONS &amp; INCA ENGINEERS INC.</b>				File Name: ELB\IBSDR_AS01.dwg			
Submitted:	Date:	Approved:	Date:	Contract No.: EL_SEG_B	Date:	Rev.:		

XREF'S  
 Resolved  
 ELB\_BSDR\_AX  
 REG-DCON  
 ZG-2234H  
 Unresolved  
 LTSCALE  
 1=1



**ELEVATION**  
 SCALE: 1" = 20'



**SECTION LOOKING NORTH**  
 SCALE: 1" = 10'

**A**  
 BSDR-AX01  
 BSDR-AS01



c:\work\ELB\BSDR\_AX01.dwg  
 10/16/08 09:00 : eackerm OE5396

No.	Date	Dsn.	Chk.	App.	Revisions

Designed By:  
 Drawn By:  
 Checked By:  
 Approved By:

**FEIS  
 CONCEPTUAL**

**CH2MHILL**  
 IN ASSOCIATION WITH  
**PARSONS & INCA**  
 ENGINEERS INC.

**STREETER & ASSOCIATES ARCHITECTS AIA • PLLC**  
 185 UNIVERSITY STREET SEATTLE, WA 98101-2901  
 206-421-9270 (FAX) 206-421-7715

**SOUNDTRANSIT**

Scale: VARIES  
 Filename: ELB\BSDR\_AX01.dwg  
 Contract No.: EL\_SEG\_B

**EAST LINK PROJECT  
 SEGMENT B**  
 SE 8TH STATION  
 112TH AT-GRADE ALTERNATIVE B2A  
 ELEVATION AND SECTION

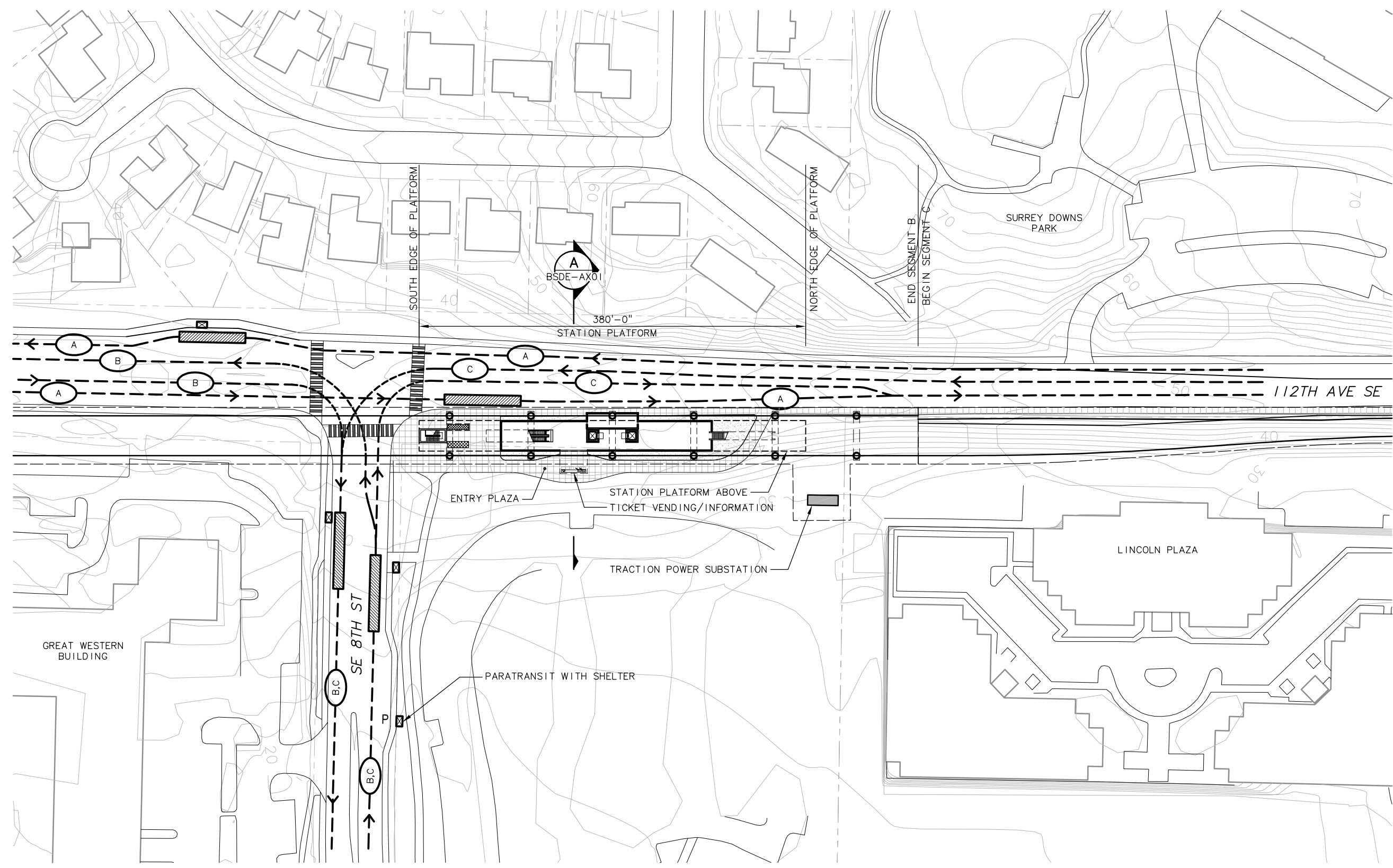


Drawing No.: **BSDR-AX01**  
 Sheet No.: **B-88**  
 Rev.:



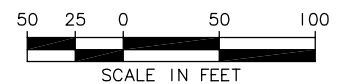
XREF'S  
 Resolved  
 ELB\_B2E\_CM  
 ELB\_B2E\_KA  
 ELB\_B2E\_JO  
 ELB\_BSDE\_AG  
 ELB\_BSDE\_AS  
 ELB\_BSDE\_AZ  
 ELC\_C7E\_JO  
 ELC\_C7E\_KA  
 REG-DCON  
 X0525CN  
 X0525SF  
 ZG-2234H  
 X0525FX  
 Unresolved  
 ELB\_BSDE\_AP  
 ELC\_C7E\_CM  
 X0525OP  
 X0525UT  
 X0525VG  
 LTSCALE  
 1=1

**NOTES**  
 1. ALIGNMENT B2E & C4A,  
 ALIGNMNET B2E & C7E,  
 ALIGNMNET B2E & C8E



**SYMBOLS KEY**

- NEW BUS STOP
- EXISTING BUS STOP
- NEW BUS SHELTER
- PARATRANSIT STOP
- BUS ROUTE : 240
- BUS ROUTE : 111, 114, 560
- BUS ROUTE : 243, 342
- BIKE STORAGE
- BIKE RACKS
- LANDSCAPED AREA
- PAVED AREA
- TICKET VENDING/INFORMATION
- CROSSWALK
- TRACK
- TRAIN



**STATION ACCESS PLAN**

SCALE: 1" = 50'

c:\work\ELB\BSDE\_AS01.dwg  
 10/16/08 08:57 : eackerm OE5396

No.	Date	Dsn.	Chk.	App.	Revisions

**FEIS  
 CONCEPTUAL**

**CH2MHILL**  
 IN ASSOCIATION WITH  
**PARSONS & INCA**  
 ENGINEERS INC.

**STREETER & ASSOCIATES ARCHITECTS AIA • PLLC**  
 185 UNIVERSITY STREET SEATTLE, WA 98101-2901  
 206-421-9270 (FA) 206-421-7715

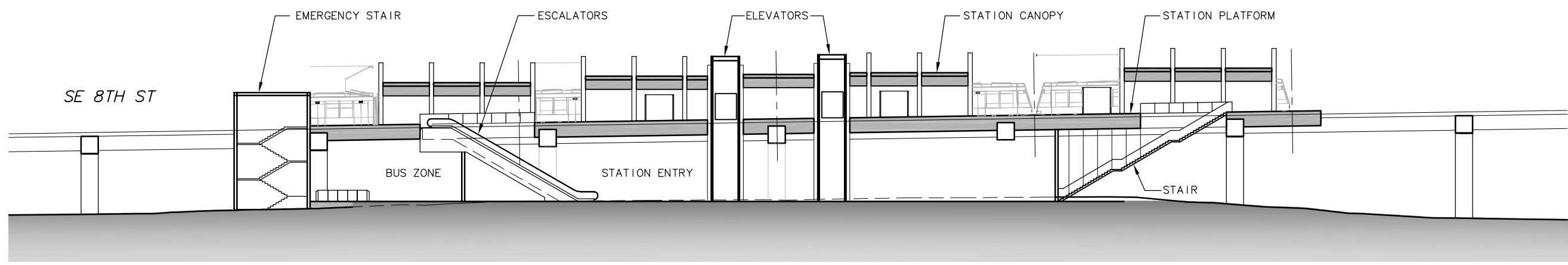
**SOUNDTRANSIT**

Scale: 1"=50'-0"  
 Filename: ELB\BSDE\_AS01.dwg  
 Contract No.: EL\_SEG\_B

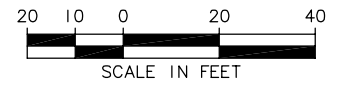
**EAST LINK PROJECT  
 SEGMENT B**  
 SE 8TH STATION  
 112TH ELEVATED ALTERNATIVE B2E  
 STATION ACCESS PLAN

Drawing No.: **BSDE-AS01**  
 Sheet No.: **B-89**  
 Rev.:

XREF'S  
 Resolved  
 ELB\_BSDE\_AX  
 REG-DCON  
 ZG-2234H  
 Unresolved  
 LTSCALE  
 1=1

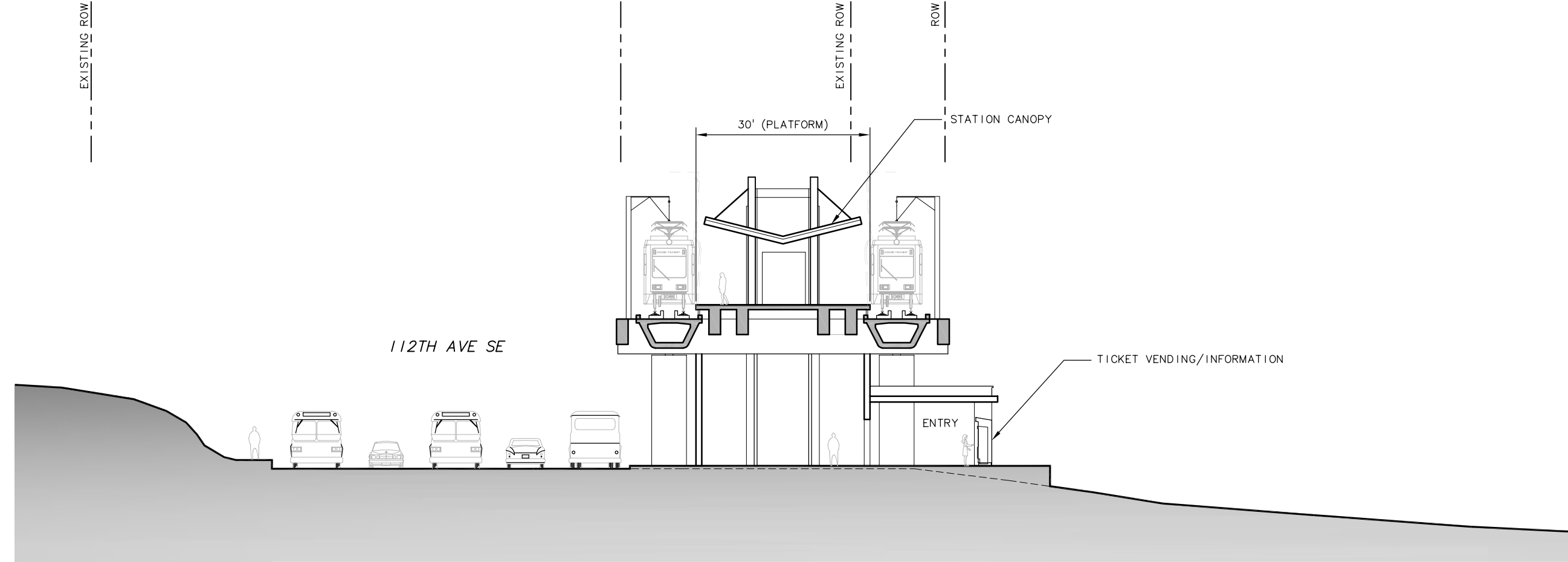


**ELEVATION**  
 SCALE: 1" = 20'

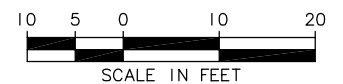


EXISTING ROW

SE 8TH STATION



**SECTION LOOKING NORTH**  
 SCALE: 1" = 10'



c:\work\ELB\BSDE\_AX01.dwg  
 10/16/08 08:57 : eackerm OE5396

No.	Date	Dsn.	Chk.	App.	Revisions

Designed By:  
 Drawn By:  
 Checked By:  
 Approved By:

FEIS  
 CONCEPTUAL

**CH2MHILL**  
 IN ASSOCIATION WITH  
**PARSONS & INCA**  
 ENGINEERS INC.

**STREETER & ASSOCIATES**  
 ARCHITECTS AIA • PLLC  
 185 UNIVERSITY STREET SEATTLE, WA 98101-2901  
 206-421-9270 (FAX) 206-421-7715

**SOUNDTRANSIT**

Scale: VARIES  
 Filename: ELB\BSDE\_AX01.dwg  
 Contract No.: EL\_SEG\_B

**EAST LINK PROJECT**  
 SEGMENT B  
 SE 8TH STATION  
 112TH ELEVATED ALTERNATIVE B2E  
 ELEVATION AND SECTION



Drawing No.: BSDE-AX01  
 Sheet No.: Rev.:  
 B-90