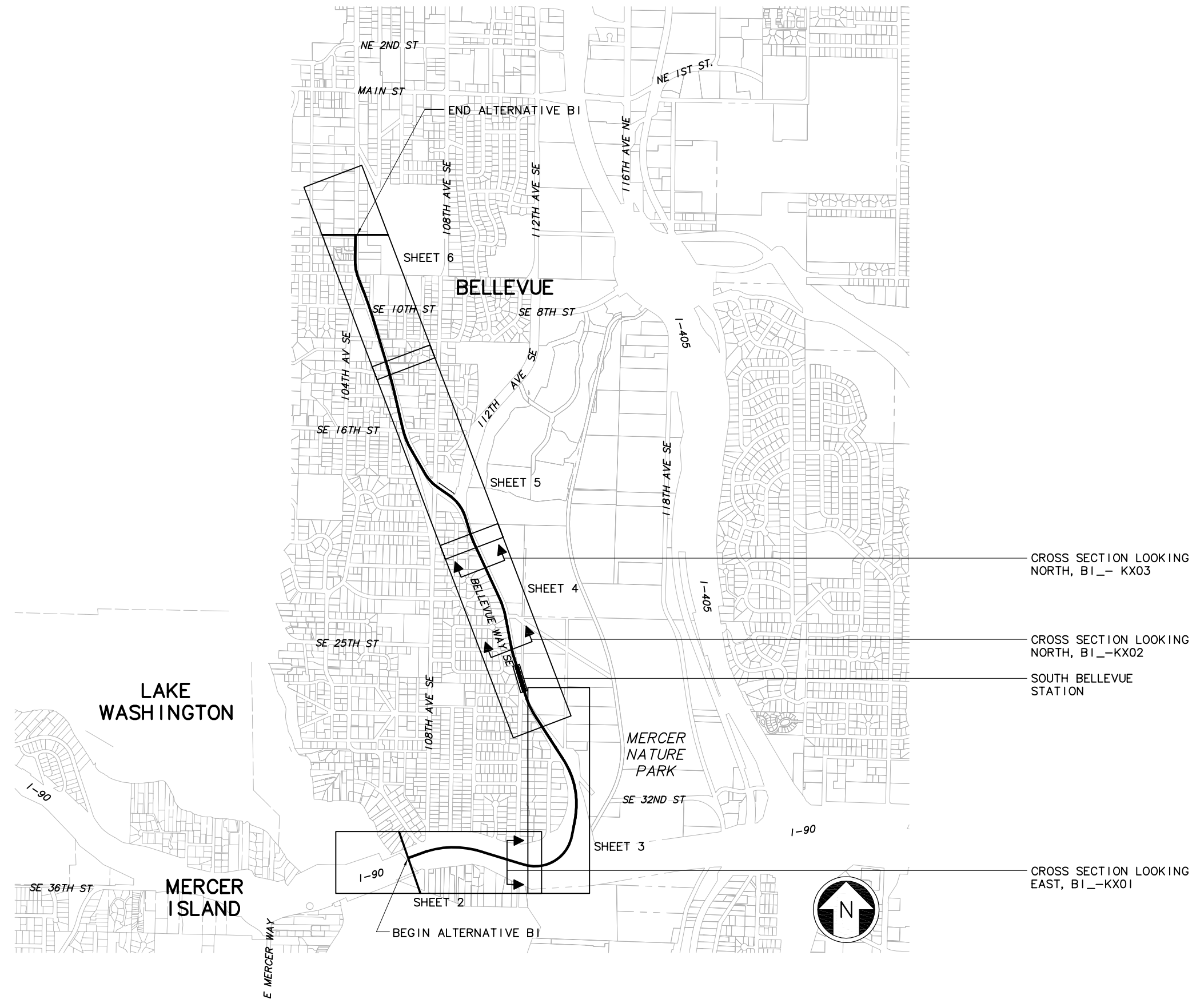


XREF'S
 Resolved
 ELB_BI_KA
 REG-DCON
 ZG-2234H
 x0216rx
 x0219rx
 x0222rx
 x0225rx
 x0228rx
 x0516rx
 x0519rx
 x0522rx
 x0525rx
 x0528rx
 x0816rx
 x0819rx
 x0822rx
 x0825rx
 x0828rx
 x9316rx
 x9319rx
 x9322rx
 x9616rx
 x9619rx
 x9916rx
 x9919rx
 Unresolved
 St_Names_E_20
 key_East
 LTSCALE
 1=1



CROSS SECTION LOOKING NORTH, BI_- KX03

CROSS SECTION LOOKING NORTH, BI_-KX02

SOUTH BELLEVUE STATION

CROSS SECTION LOOKING EAST, BI_-KX01

c:\work\ELBIBI_GZ05.dwg
 10/16/08 08:39 : eackerm OE5396

No.	Date	Dsn.	Chk.	App.	Revisions

Designed By:
 Drawn By:
 Checked By:
 Approved By:

**FEIS
 CONCEPTUAL**

CH2MHILL
 IN ASSOCIATION WITH
PARSONS & INCA
 ENGINEERS INC.

Submitted: Date: Approved: Date:

SOUNDTRANSIT

Date:

Scale: NTS
 Filename: ELBIBI_GZ05.dwg
 Contract No.: EL_SEG_B
 Date:

**EAST LINK PROJECT
 SEGMENT B
 ALTERNATIVE BI -
 BELLEVUE WAY
 KEY PLAN**

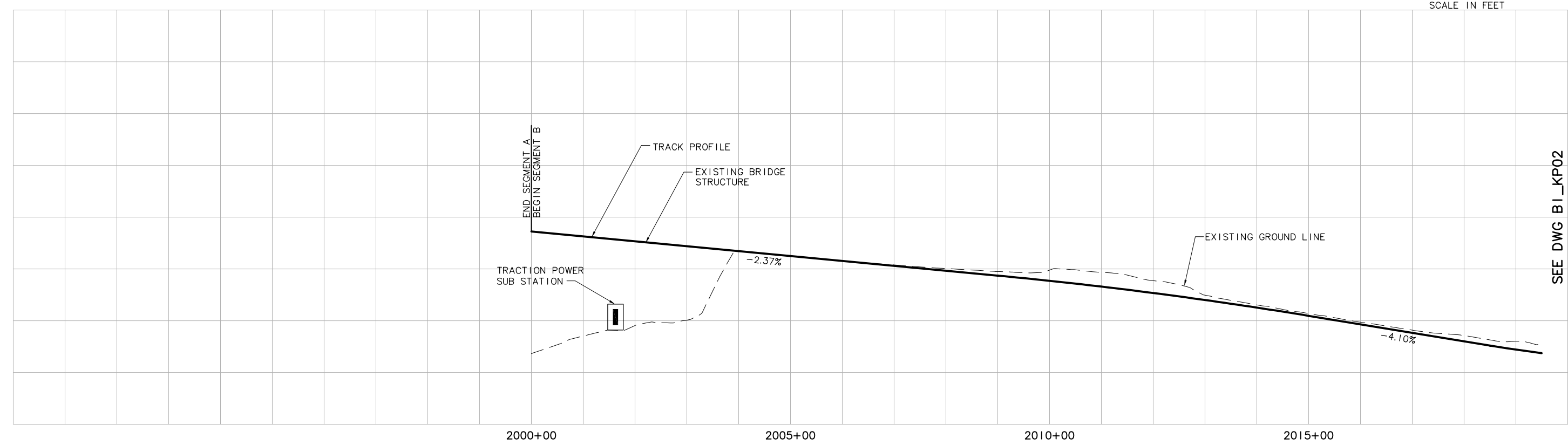
THIS PRINT REDUCED
 HALF SCALE

Drawing No.: BI_-GZ05
 Sheet No.: Rev.:
 06

XREF'S
 Resolved
 ELB_BI_CM
 ELB_BI_JD
 ELB_BI_KA
 REG-DCON
 ZG-2234H
 ZG-G10010
 x0216rx
 x0216sf
 x0516rx
 x0516sf
 Unresolved
 key_East
 LTSCALE
 1=1



SEE DWG BI_KP02



SEE DWG BI_KP02

c:\work\ELB\BI_KP01.dwg
 10/16/08 08:40 : eackerm OE5396

No.	Date	Dsn.	Chk.	App.	Revisions

Designed By:
 Drawn By:
 Checked By:
 Approved By:

**FEIS
 CONCEPTUAL**

CH2MHILL
 IN ASSOCIATION WITH
PARSONS & INCA
 ENGINEERS INC.

Submitted: Date:
 Approved: Date:

SOUNDTRANSIT

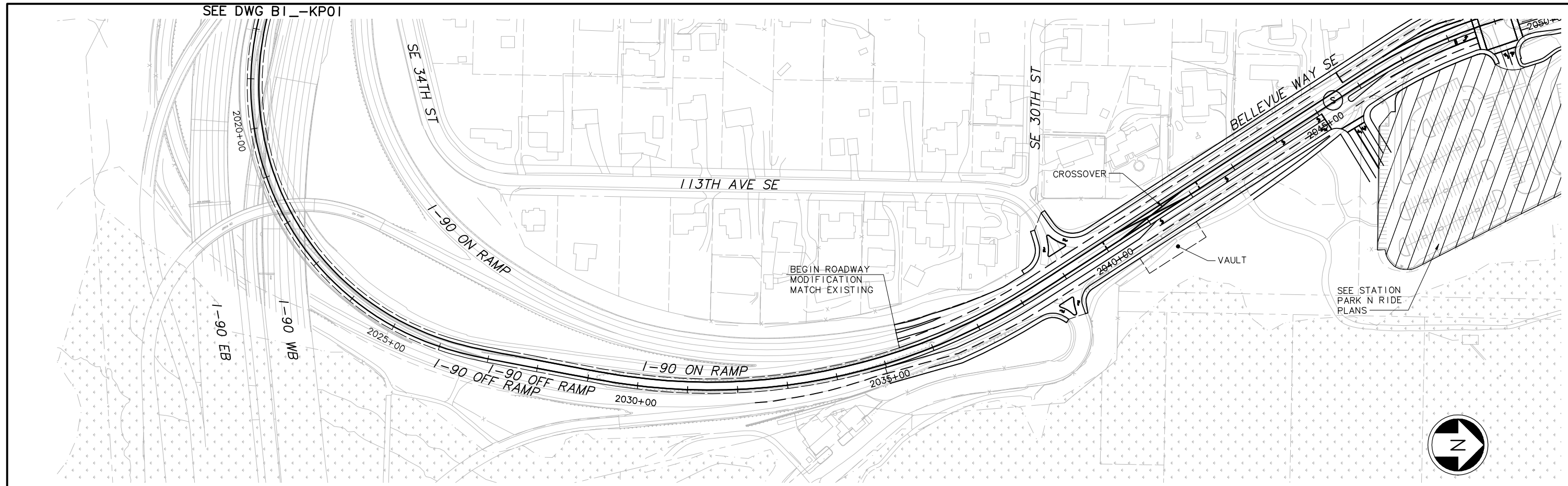
Scale:
 H: 1"=100'; V: 1"=25'
 Filename:
 ELBIBI_KP01.dwg
 Contract No.:
 EL_SEG_B

**EAST LINK PROJECT
 SEGMENT B
 ALTERNATIVE BI -
 BELLEVUE WAY
 TRACK PLAN & PROFILE**



Drawing No.:
BI_KP01
 Sheet No.: Rev.:
 Ógí

DWG. INFO:
 L1SCALE:
 1"=1'
 XREFs:
 -Attach:
 -Overlay:
 ELB_B1_CW
 ELB_B1_KA
 ZG-2234H
 ZG-G10010
 x0516rx
 x0516rx
 x0519rx
 x0519rx
 -Unresolved:

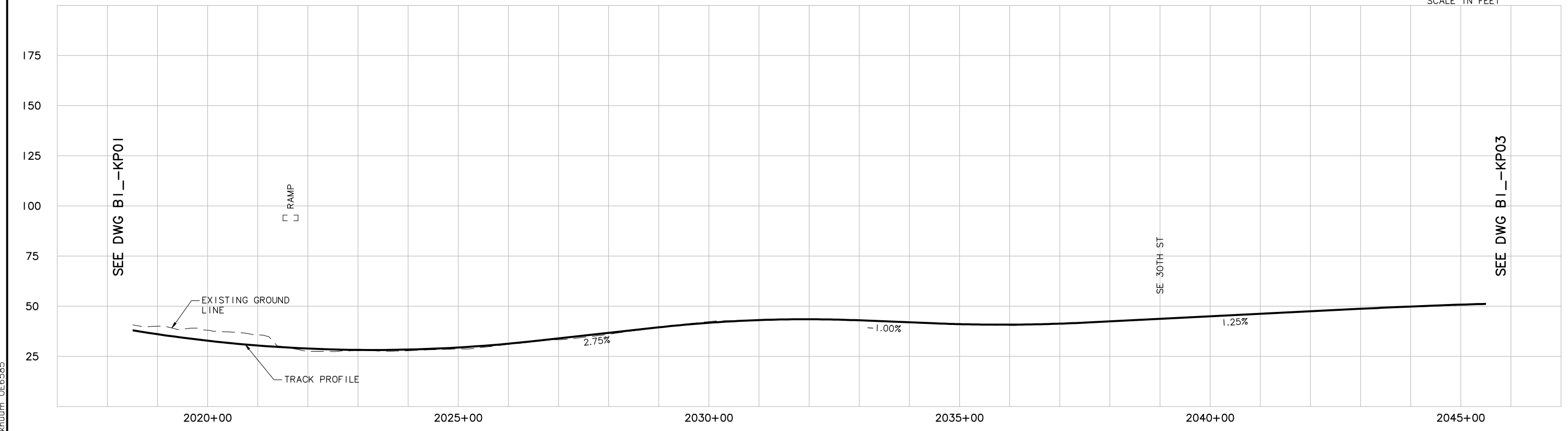


SEE DWG BI_-KP01

SEE DWG BI_-KP03



100 50 0 100 200
 SCALE IN FEET



c:\work\feis\segment_b\elb\bi_-kp02.dwg
 04/26/11 10:51 : khuum 066585

No.	Date	Dsn.	Chk.	App.	Revisions

Designed By:
 Drawn By:
 Checked By:
 Approved By:

FE IS
 CONCEPTUAL

CH2MHILL
 IN ASSOCIATION WITH
PARSONS & INCA
 ENGINEERS INC.

Submitted: Date:
 Approved: Date:

SOUNDTRANSIT

Scale:
 H: 1"=100'; V: 1"=25'
 Filename:
 ELB\BI_-KP02.dwg
 Contract No.:
 EL_SEG_B



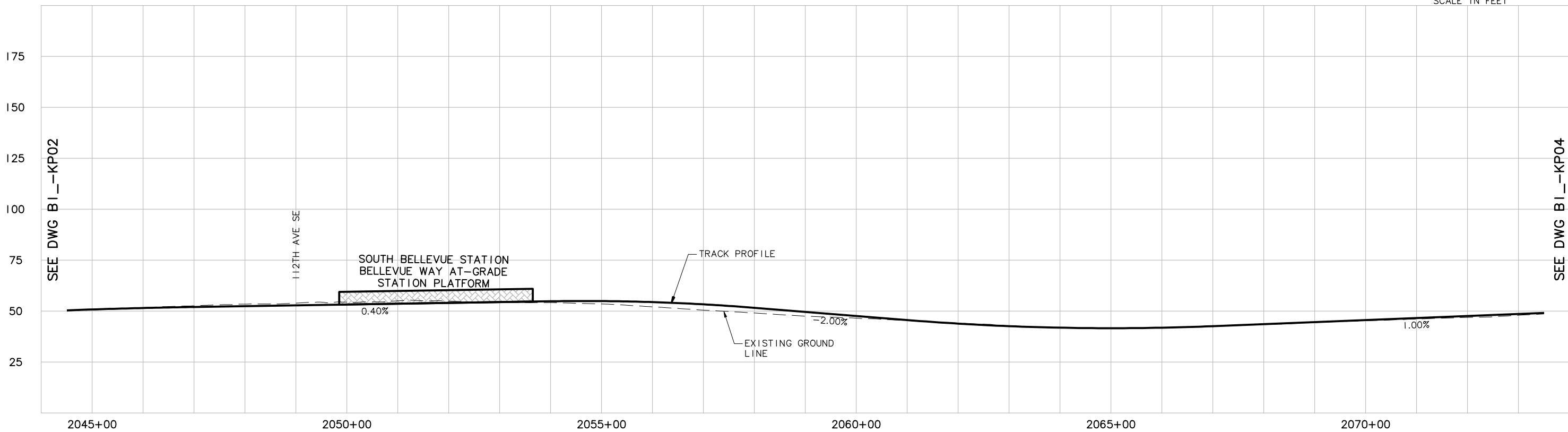
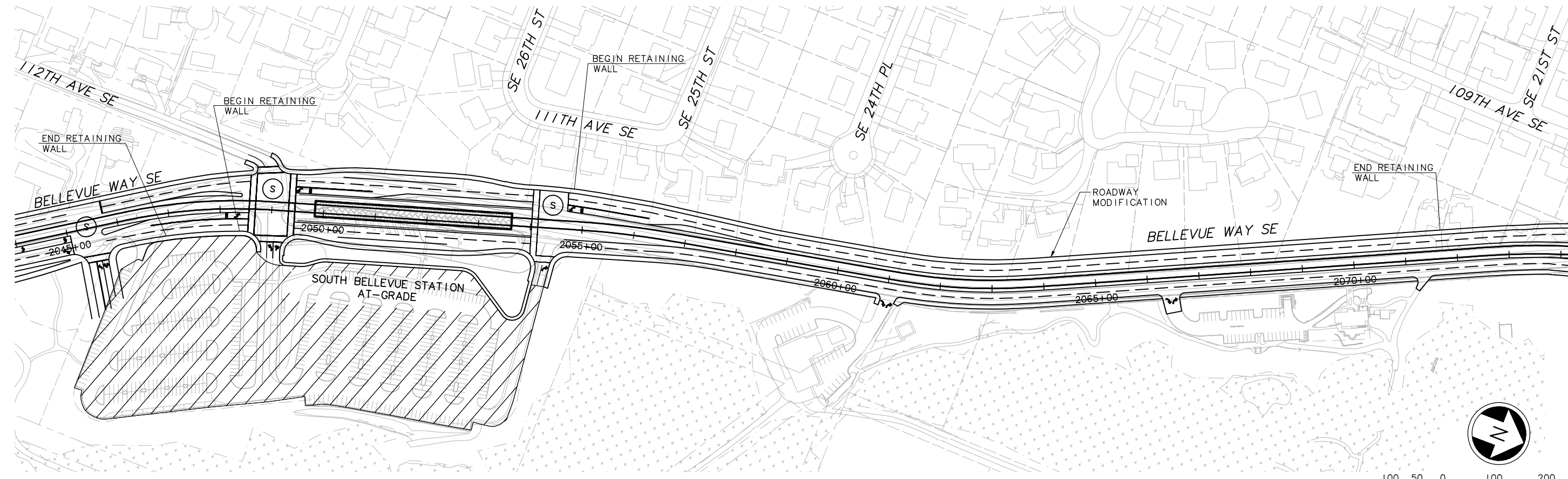
EAST LINK PROJECT
 SEGMENT B
 ALTERNATIVE BI -
 BELLEVUE WAY
 TRACK PLAN & PROFILE

Drawing No.:
BI_-KP02
 Sheet No.: Rev.:
 06

DWG. INFO:
 LTSCALE:
 1=1
 XREFs:
 -Attach:
 -Overlay:
 ELB_B1_CW
 ELB_B1_KA
 ZG-2234H
 ZG-G10010
 x0219r
 x0220r
 x0222r
 x0519r
 x0519r
 -Unresolved:

SEE DWG BI_-KP02

SEE DWG BI_-KP04



c:\work\feis\segment_b\b\ELB\BI_-KP03.dwg
 04/26/11 10:48 : khuum 066585

No.	Date	Dsn.	Chk.	App.	Revisions

Designed By:
 Drawn By:
 Checked By:
 Approved By:

FEIS
 CONCEPTUAL

CH2MHILL
 IN ASSOCIATION WITH
PARSONS & INCA
 ENGINEERS INC.

Submitted: _____ Date: _____
 Approved: _____ Date: _____

SOUNDTRANSIT

Scale:
 H: 1"=100'; V: 1"=25'
 Filename:
 ELB\BI_-KP03.dwg
 Contract No.:
 EL_SEG_B

Date: _____

EAST LINK PROJECT
 SEGMENT B
 ALTERNATIVE B1 -
 BELLEVUE WAY
 TRACK PLAN & PROFILE

Drawing No.:
BI_-KP03

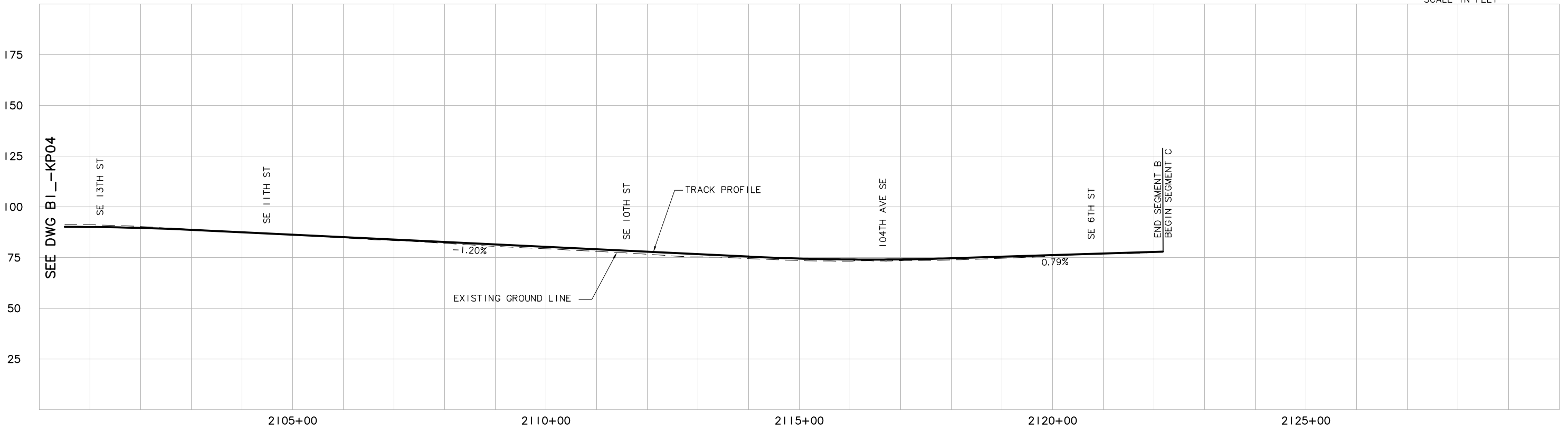
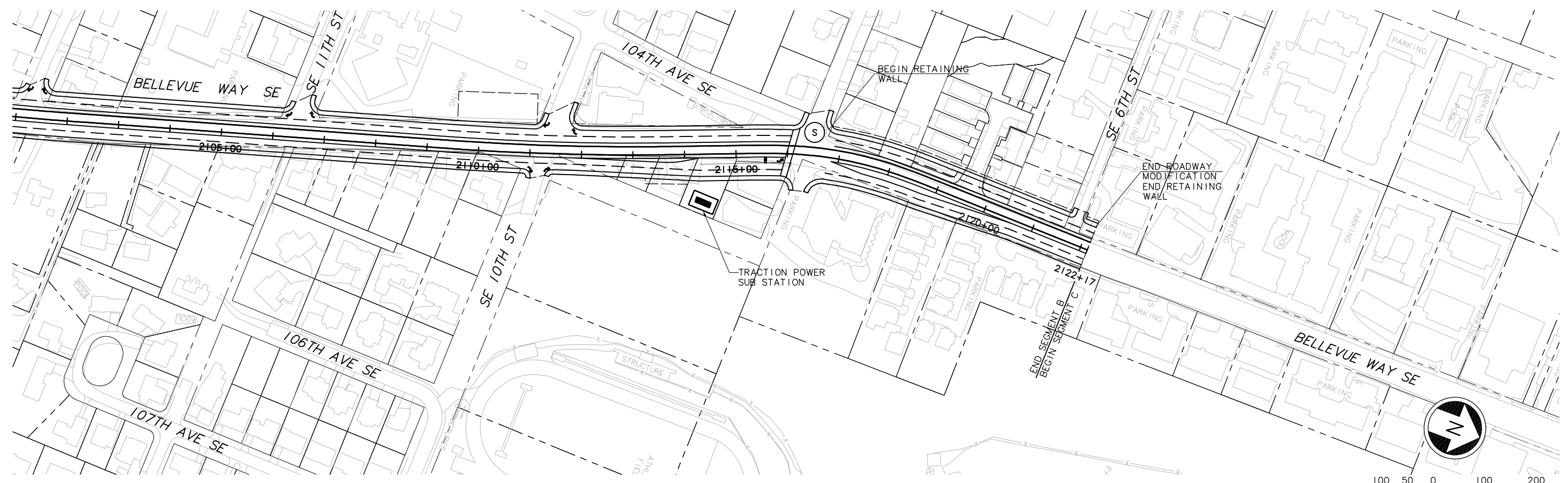
Sheet No.: _____ Rev.: _____

Ó-GJ



XREF'S
 Resolved
 ELB_BI_KM
 ELB_BI_KA
 ELB_BI_KJ
 REG-DCON
 ZG-2234H
 ZG-G10010
 x0222rx
 x0222sf
 x0225rx
 x0225sf
 Unresolved
 key_East
 LTSCALE
 I=1

SEE DWG BI_KP04



c:\work\ELB\BI_KP05.dwg
 10/16/08 08:41 : eackerm OE5396

No.	Date	Dsn.	Chk.	App.	Revisions

FEIS CONCEPTUAL	Designed By:	 CH2MHILL <small>IN ASSOCIATION WITH</small> PARSONS & INCA <small>ENGINEERS INC.</small>	 SOUNDTRANSIT
	Drawn By:		
	Checked By:		
	Approved By:		
Submitted:	Date:	Approved:	Date:

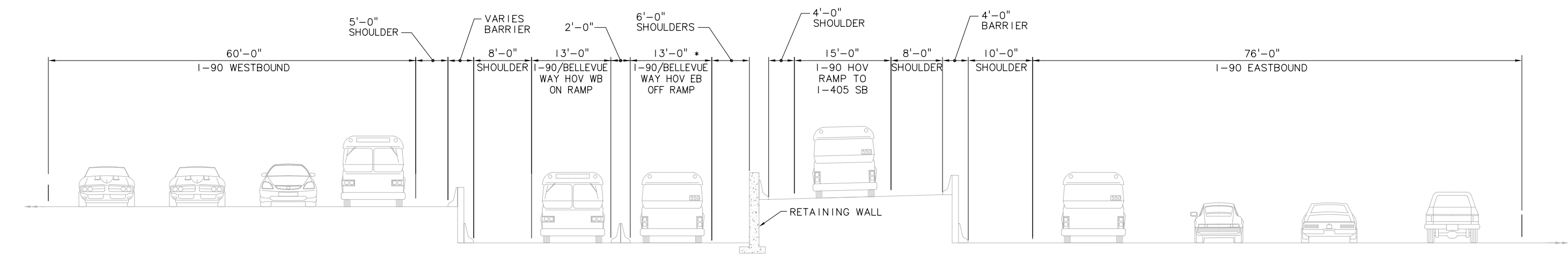
Scale:
 H: 1"=100'; V: 1"=25'
 Filename:
 ELB\BI_KP05.dwg
 Contract No.:
 EL_SEG_B
 Date:

EAST LINK PROJECT
SEGMENT B
 ALTERNATIVE BI -
BELLEVUE WAY
TRACK PLAN & PROFILE

Drawing No.: **BI_KP05**
 Sheet No.: **01F**
 Rev.:

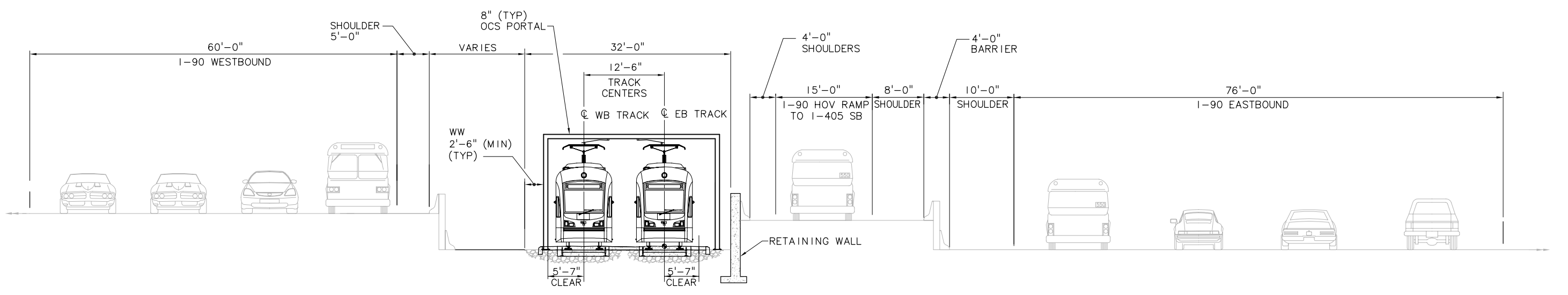


XREF'S
 Resolved
 ZG-2234H
 REG-DCON
 Unresolved
 LTSCALE
 1=1



EXISTING ROADWAY SECTION - I-90 & BELLEVUE WAY RAMP

SCALE: NTS
 * PER R8-A STAGE I COMPLETION



PROPOSED LRT SECTION - I-90 & BELLEVUE WAY RAMP

SCALE: NTS

c:\work\ELBIB1_KX01.dwg
 10/16/08 08:41 : eackerm OE5396

No.	Date	Dsn.	Chk.	App.	Revisions

Designed By:
 Drawn By:
 Checked By:
 Approved By:

FEIS
 CONCEPTUAL

CH2MHILL
 IN ASSOCIATION WITH
PARSONS & INCA
 ENGINEERS INC.

Submitted: _____ Date: _____
 Approved: _____ Date: _____

SOUNDTRANSIT

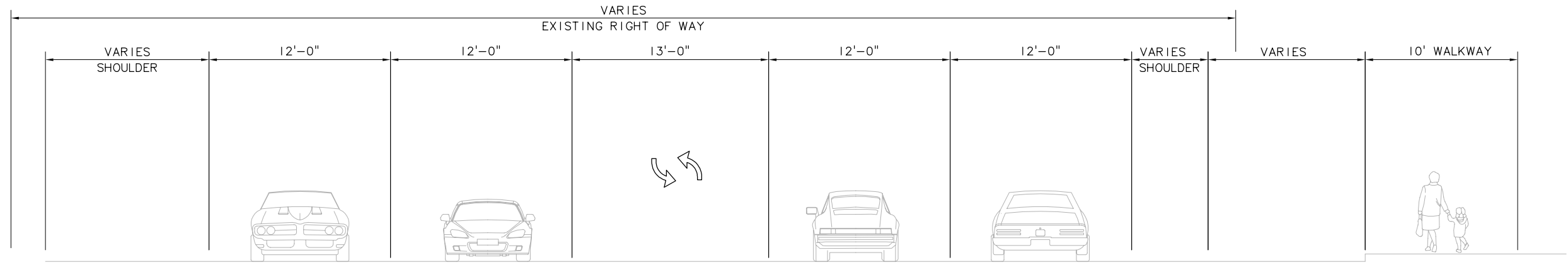
Scale: NTS
 Filename: ELBIB1_KX01.dwg
 Contract No.: EL_SEG_B
 Date: _____

EAST LINK PROJECT
 SEGMENT B
 ALTERNATIVE B1 -
 BELLEVUE WAY
 TYPICAL SECTION

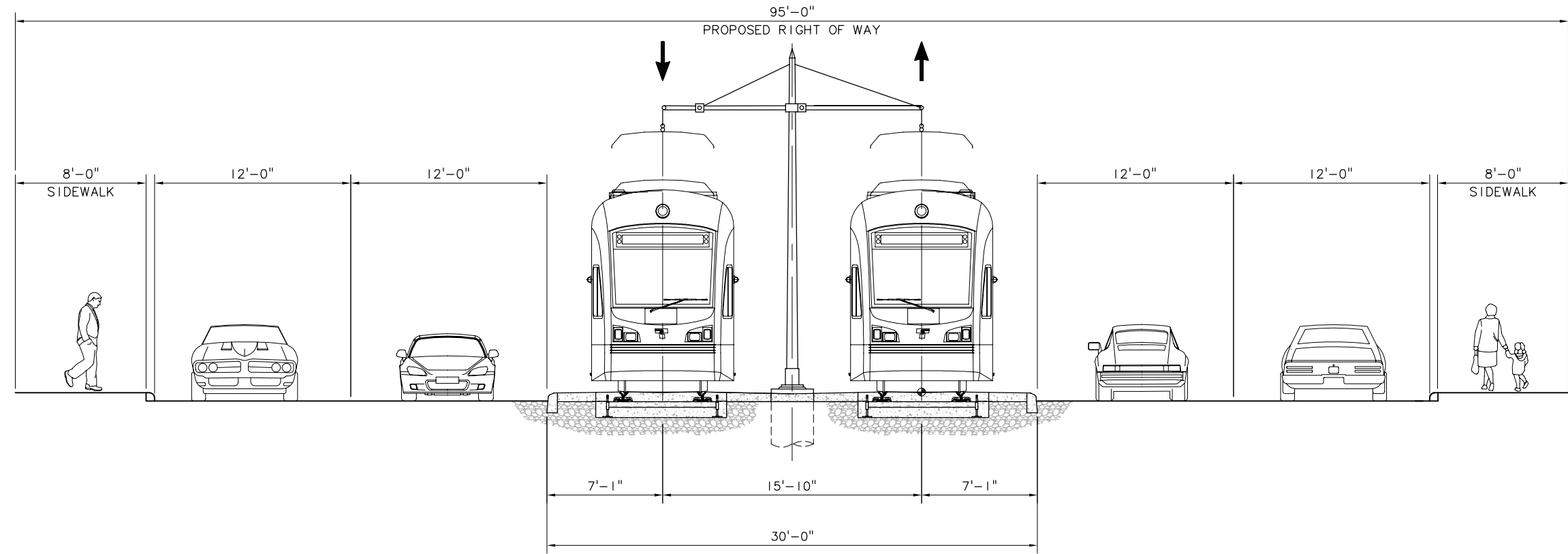


Drawing No.: B1_KX01
 Sheet No.: _____ Rev.: _____
 OHG

XREF'S
 Resolved
 ZG-2234H
 REG-DCON
 Unresolved
 LTSCALE
 1=1



EXISTING ROADWAY SECTION – S BELLEVUE WAY (SOUTH OF S BELLEVUE P & R)
 SCALE: NTS



PROPOSED ROADWAY & LRT SECTION – S BELLEVUE WAY (SOUTH OF S BELLEVUE P & R)
 SCALE: NTS

c:\work\ELBIB1_KX02.dwg
 10/16/08 08:41 : eackerm OE5396

No.	Date	Dsn.	Chk.	App.	Revisions

Designed By:
 Drawn By:
 Checked By:
 Approved By:

FEIS
 CONCEPTUAL

CH2MHILL
 IN ASSOCIATION WITH
PARSONS & INCA
 ENGINEERS INC.

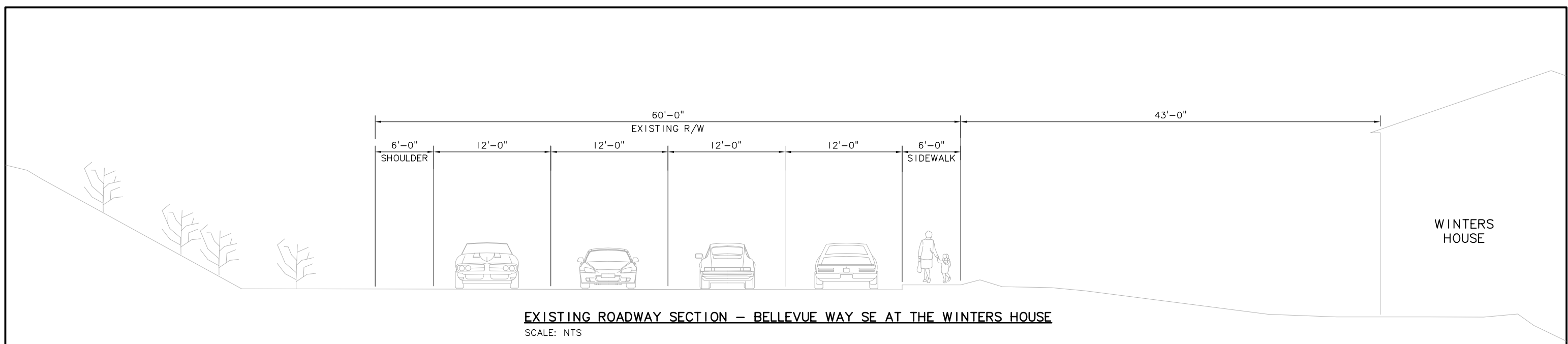
Submitted: Date:
 Approved: Date:

Scale: NTS
 Filename: ELBIB1_KX02.dwg
 Contract No.: EL_SEG_B
 Date:

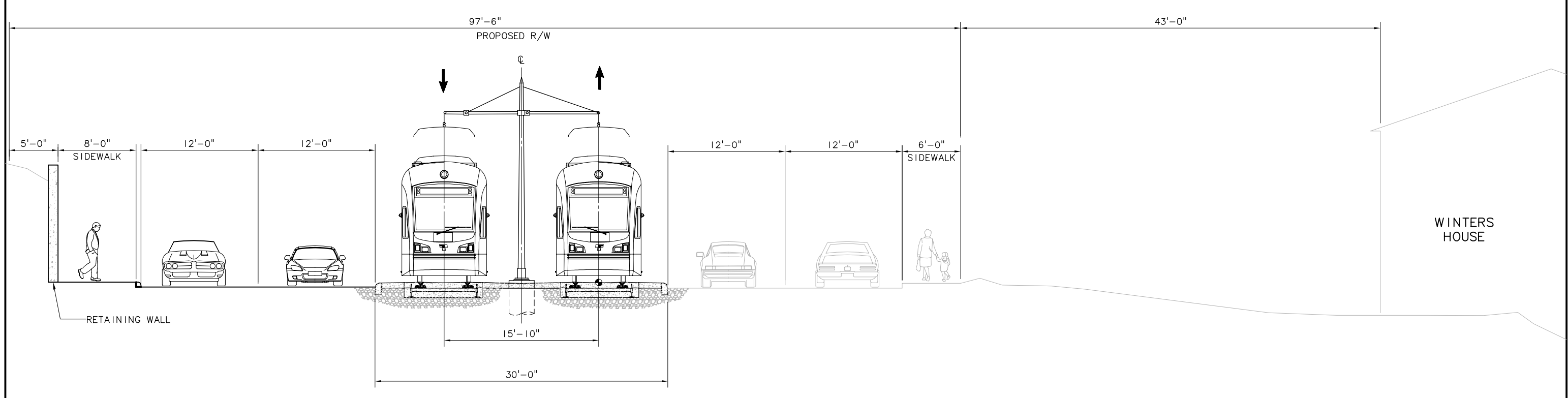
EAST LINK PROJECT
 SEGMENT B
 ALTERNATIVE B1 -
 BELLEVUE WAY
 TYPICAL SECTION

Drawing No.: B1_KX02
 Sheet No.: Rev.:
 OH

XREF'S
 Resolved
 ZG-2234H
 REG-DCON
 Unresolved
 LTSCALE
 1=1



EXISTING ROADWAY SECTION - BELLEVUE WAY SE AT THE WINTERS HOUSE
 SCALE: NTS



PROPOSED ROADWAY & LRT SECTION - BELLEVUE WAY SE AT THE WINTERS HOUSE (WIDENING TO WEST)
 SCALE: NTS

c:\work\ELBIB1_KX03.dwg
 10/16/08 08:42 : eackerm OE5396

No.	Date	Dsn.	Chk.	App.	Revisions

Designed By:
 Drawn By:
 Checked By:
 Approved By:

**FEIS
 CONCEPTUAL**

CH2MHILL
 IN ASSOCIATION WITH
PARSONS & INCA
 ENGINEERS INC.

Submitted: Date: Approved: Date:

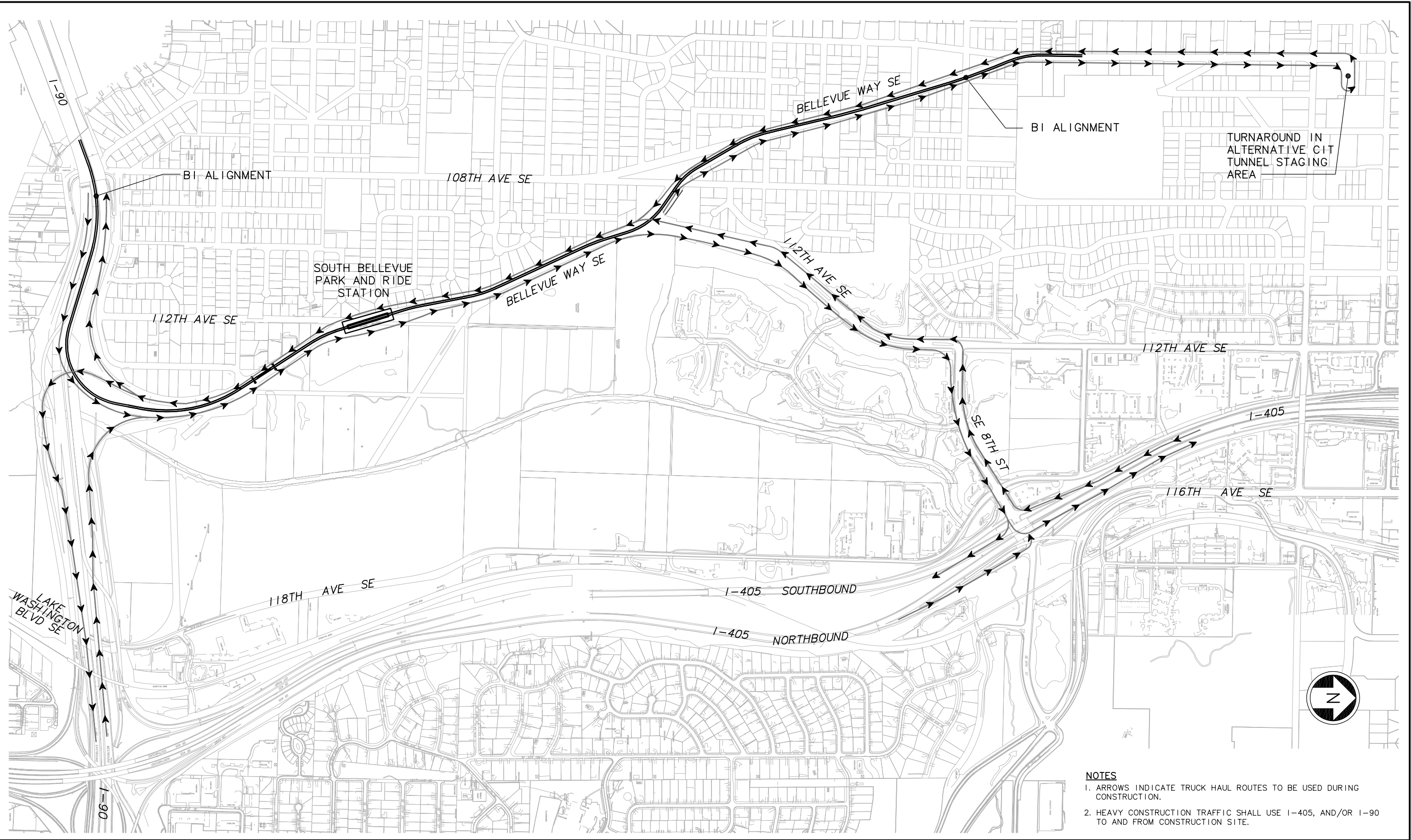
Scale: NTS
 Filename: ELBIB1_KX03.dwg
 Contract No.: EL_SEG_B
 Date:

**EAST LINK PROJECT
 SEGMENT B
 ALTERNATIVE B1 -
 BELLEVUE WAY
 TYPICAL SECTION**

Drawing No.: **BI_KX03**
 Sheet No.: Rev.:
OH

XREF'S
 Resolved
 ELB_BI__KA
 REG-DCON
 Zg-2234h
 x0216rx
 x0216sf
 x0219rx
 x0222rx
 x0225rx
 x0228rx
 x0516rx
 x0516sf
 x0519rx
 x0519sf
 x0522rx
 x0522sf
 x0525rx
 x0525sf
 x0528rx
 x0528sf
 x0531rx
 x0531sf
 x0816rx
 x0816sf
 x0819rx
 x0819sf
 x0822rx
 x0822sf
 x0825rx
 x0825sf
 x0828rx
 x9616rx
 x9619rx
 x9916rx
 x9919rx

Unresolved
 LTSCALE
 1=1



- NOTES**
- ARROWS INDICATE TRUCK HAUL ROUTES TO BE USED DURING CONSTRUCTION.
 - HEAVY CONSTRUCTION TRAFFIC SHALL USE I-405, AND/OR I-90 TO AND FROM CONSTRUCTION SITE.

c:\work\ELBIBI__CC01.dwg
 10/16/08 08:39 : eackerm OE5396

No.	Date	Dsn.	Chk.	App.	Revisions

Designed By:
 Drawn By:
 Checked By:
 Approved By:

**FEIS
 CONCEPTUAL**

CH2MHILL
 IN ASSOCIATION WITH
PARSONS & INCA
 ENGINEERS INC.

Submitted: Date: Approved: Date:

SOUNDTRANSIT

Scale: NTS
 Filename: ELBIBI__CC01.dwg
 Contract No.: EL_SEG_B
 Date:

**EAST LINK PROJECT
 SEGMENT B
 ALTERNATIVE BI -
 BELLEVUE WAY
 CONSTRUCTION TRUCK HAUL ROUTE PLAN**

Drawing No.: BI__CC01
 Sheet No.: Rev.: OH