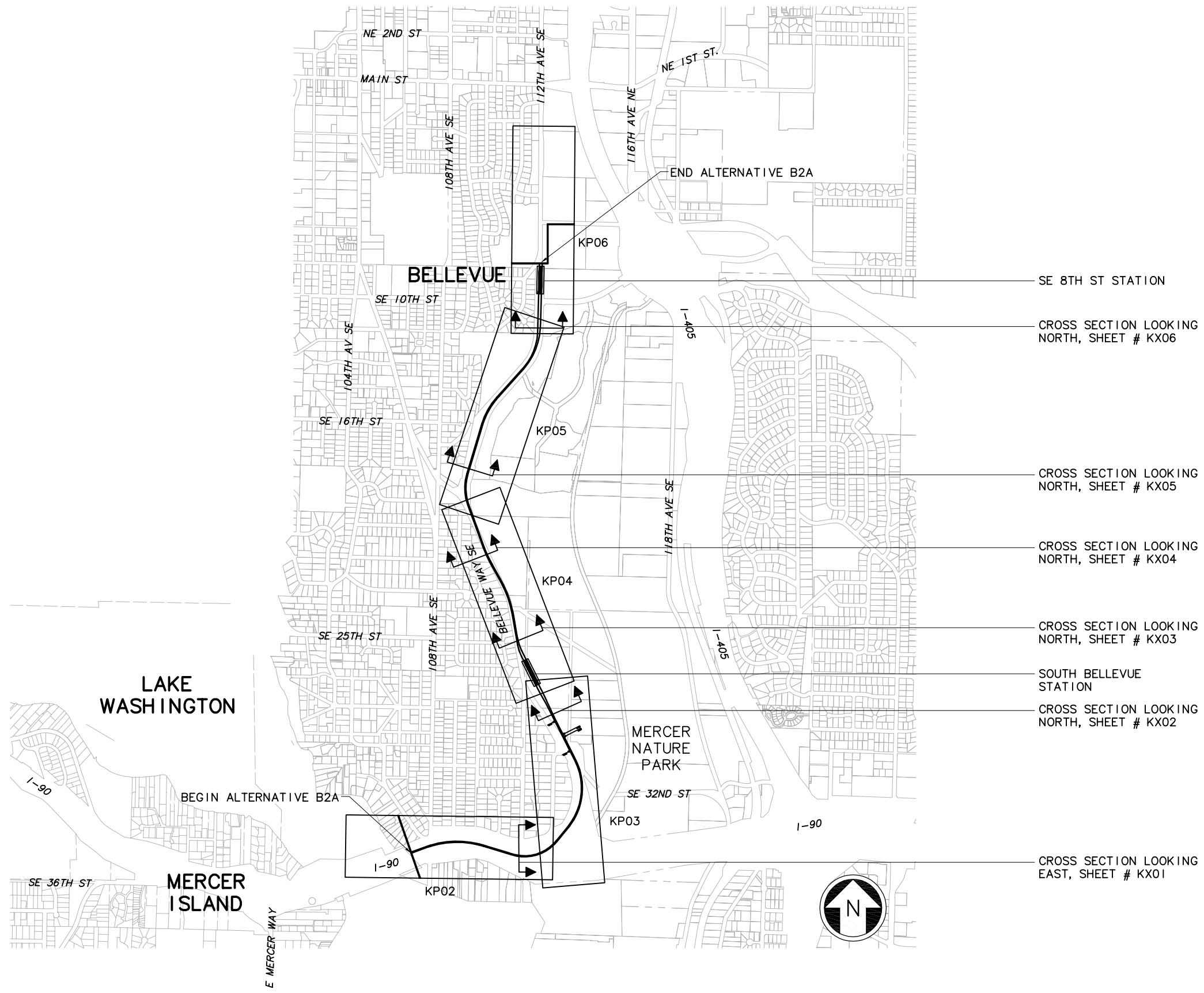


XREF'S
 Resolved
 ELB_B2A_KA
 REG-DCON
 ZG-2234H
 x0216rx
 x0219rx
 x0222rx
 x0225rx
 x0228rx
 x0516rx
 x0519rx
 x0522rx
 x0525rx
 x0528rx
 x0816rx
 x0819rx
 x0822rx
 x0825rx
 x0828rx
 x9316rx
 x9319rx
 x9322rx
 x9616rx
 x9619rx
 x9916rx
 x9919rx
 Unresolved
 St_Names_E_20
 key_East
 LTSCALE
 1=1



c:\work\ELBIB2A_GZ05.dwg
 10/16/08 08:43 : eackerm OE5396

No.	Date	Dsn.	Chk.	App.	Revisions

Designed By:
 Drawn By:
 Checked By:
 Approved By:

**FEIS
 CONCEPTUAL**

CH2MHILL
 IN ASSOCIATION WITH
PARSONS & INCA
 ENGINEERS INC.

Submitted: Date: Approved: Date:



Scale: NTS
 Filename: ELBIB2A_GZ05.dwg
 Contract No.: EL_SEG_B
 Date:

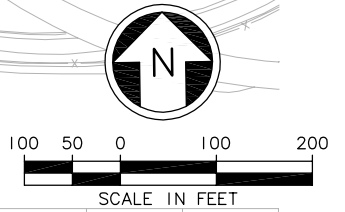
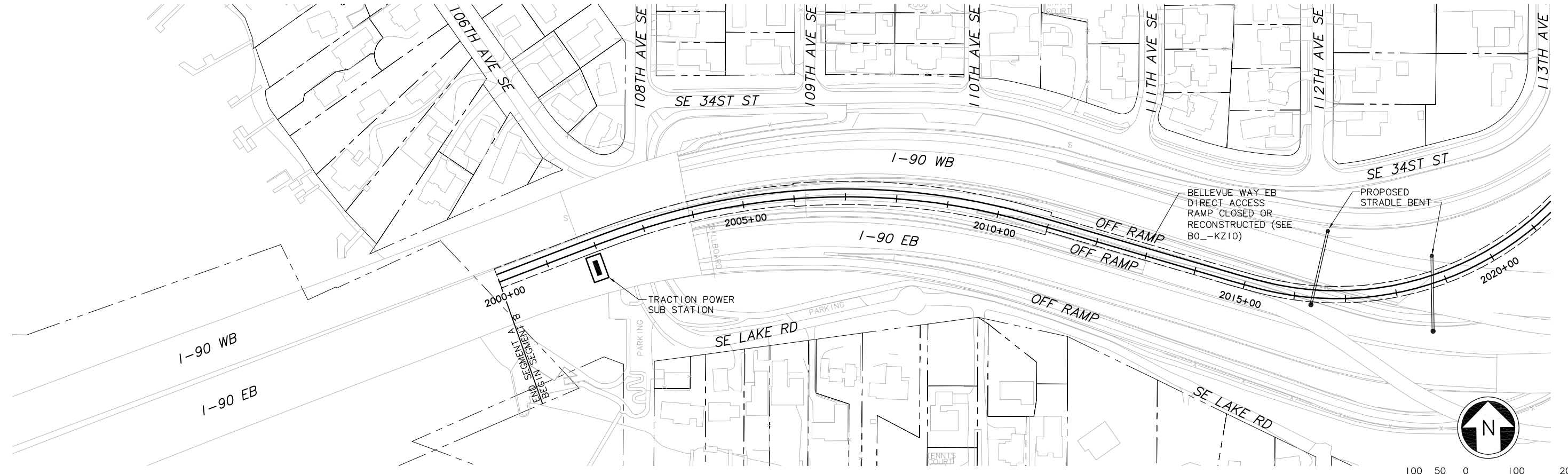
**EAST LINK PROJECT
 SEGMENT B
 ALTERNATIVE B2A**

KEY PLAN

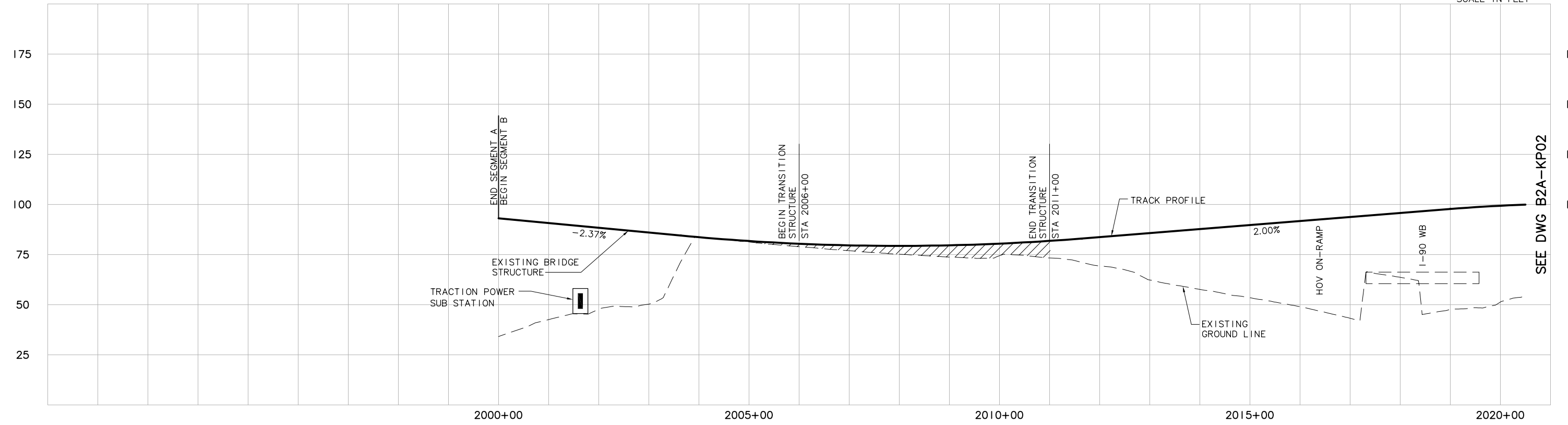
Drawing No.: B2A-GZ05
 Sheet No.: Rev.:
B-36

XREF'S
 Resolved
 z9-2234h
 z9-g10010
 ELB_B2A_KA
 ELB_B2A_CM
 ELB_B2A_JO
 REG-DCON
 x0216rx
 x0216sf
 x0516rx
 x0516sf
 Unresolved
 key_East

LTSKALE
 1"=1'



SEE DWG B2A-KP02



SEE DWG B2A-KP02

c:\work\ELBIB2A_KP01.dwg
 11/10/08 13:24 : eackerm OE5396

No.	Date	Dsn.	Chk.	App.	Revisions

Designed By:
 Drawn By:
 Checked By:
 Approved By:

**FEIS
 CONCEPTUAL**

CH2MHILL
 IN ASSOCIATION WITH
PARSONS & INCA
 ENGINEERS INC.

Submitted: Date: Approved: Date:

Scale:
 H: 1"=100'; V: 1"=25'
 Filename:
 ELBIB2A_KP01.dwg
 Contract No.:
 EL_SEG_B

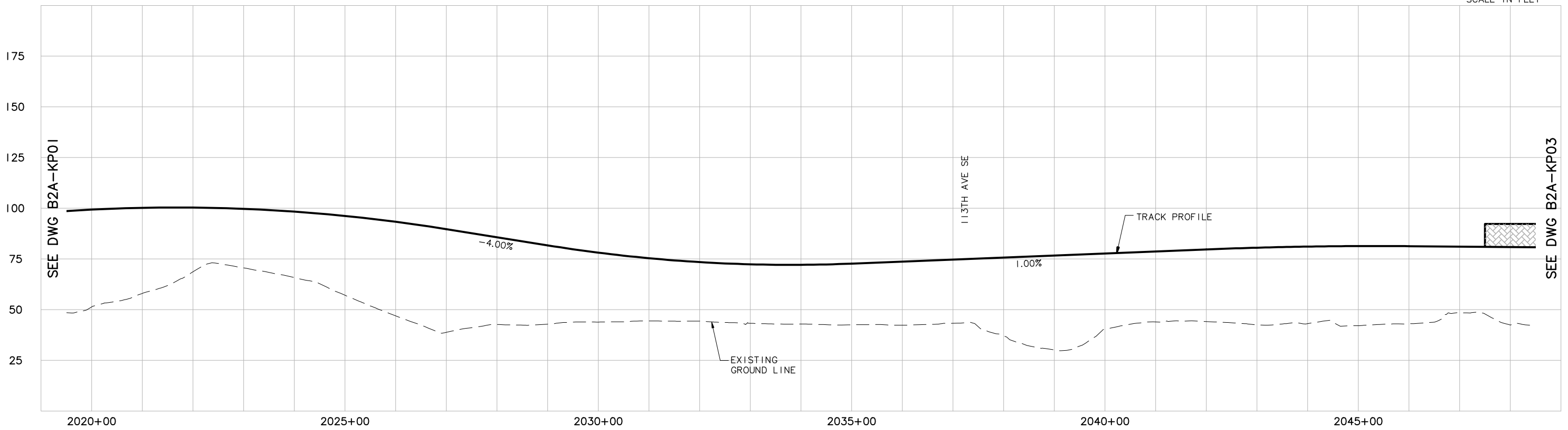
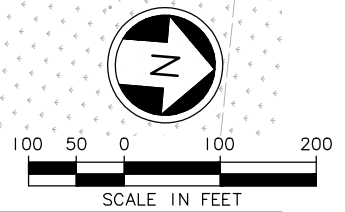
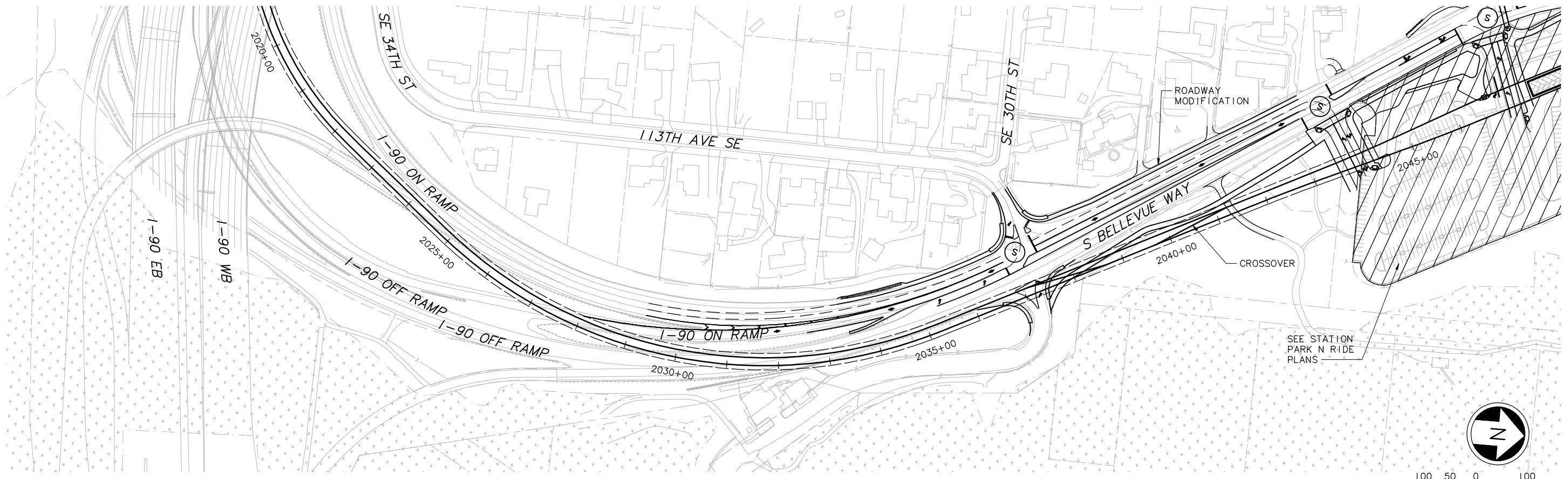
**EAST LINK PROJECT
 SEGMENT B
 ALTERNATIVE B2A
 TRACK PLAN & PROFILE**

Drawing No.:
B2A-KP01
 Sheet No.: Rev.:
B-37

DWG. INFO:
 L1SCALE:
 1"=1'
 XREFs:
 -Attach:
 z9-2234h
 z9-g10010
 -Overlay:
 ELB_B2A_KA
 ELB_B2A_CB
 x0516rx
 x0519rx
 x0519sf
 -Unresolved:

SEE DWG B2A-KP01

SEE DWG B2A-KP03



c:\work\feis\segment_b\b2a\ELBIB2A_KP02.dwg
 04/27/11 16:12 : khuum 0E6585

No.	Date	Dsn.	Chk.	App.	Revisions

Designed By:	
Drawn By:	
Checked By:	
Approved By:	

FEIS
 CONCEPTUAL

CH2MHILL
 IN ASSOCIATION WITH
PARSONS & INCA
 ENGINEERS INC.

Submitted:	
Date:	
Approved:	
Date:	

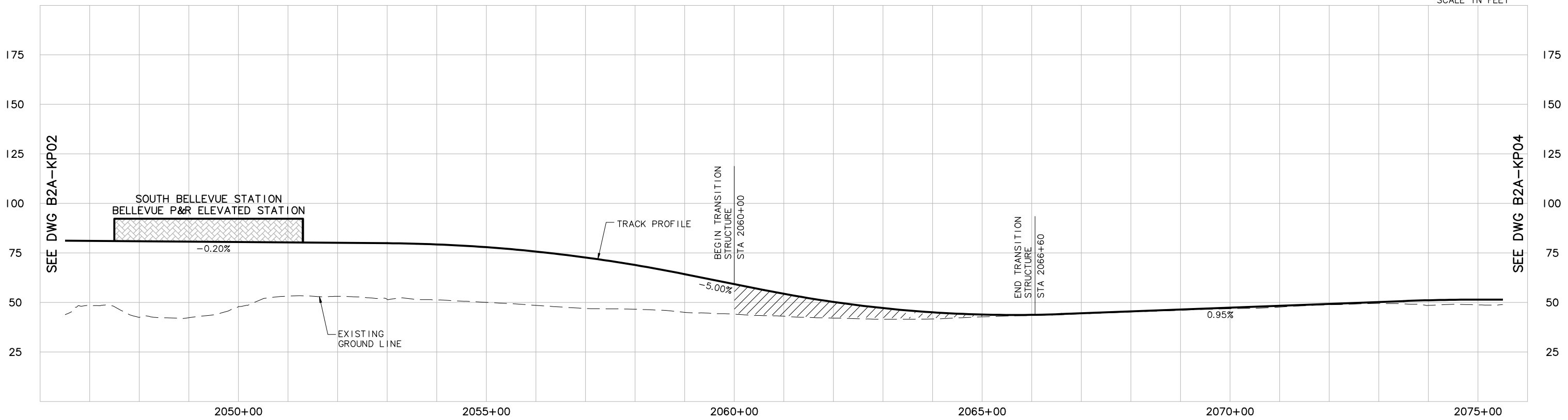
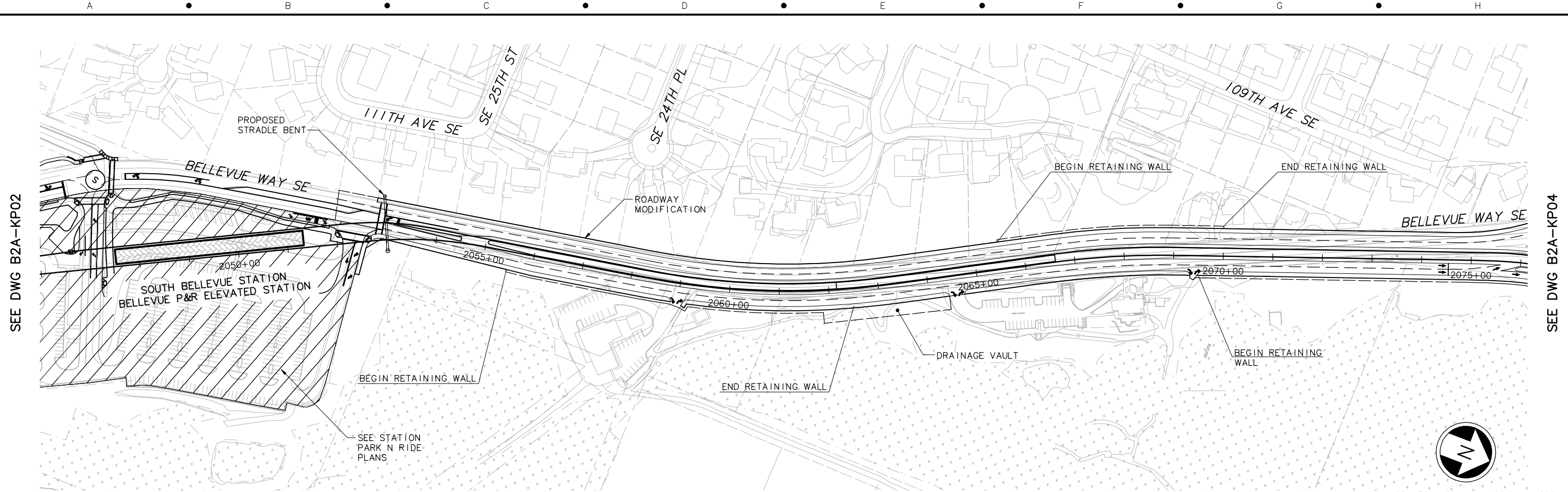
Scale:	H: 1"=100'; V: 1"=25'
Filename:	ELBIB2A_KP02.dwg
Contract No.:	EL_SEG_B
Date:	



EAST LINK PROJECT
 SEGMENT B
 ALTERNATIVE B2A
 TRACK PLAN & PROFILE

Drawing No.:	B2A-KP02
Sheet No.:	B-38
Rev.:	

DWG. INFO:
 L1SCALE:
 1"=1'
 XREFs:
 -Attach:
 z9-234h
 z9-g10010
 -Overlay:
 ELB_B2A_KA
 ELB_B2A_CP
 x0219r
 x0219s
 x0222r
 x0222s
 x0516r
 x0516s
 x0519r
 x0519s
 x0522r
 x0522s
 -Unresolved:



c:\work\feis\segment_b\2a\ELBIB2A_KP03.dwg
 04/27/11 16:15 : khum OE6585

No.	Date	Dsn.	Chk.	App.	Revisions

Designed By:
 Drawn By:
 Checked By:
 Approved By:

**FEIS
 CONCEPTUAL**

CH2MHILL
 IN ASSOCIATION WITH
PARSONS & INCA
 ENGINEERS INC.

Submitted: _____ Date: _____
 Approved: _____ Date: _____

SOUNDTRANSIT

Scale:
 H: 1"=100'; V: 1"=25'
 Filename:
 ELBIB2A_KP03.dwg
 Contract No.: _____
 EL_SEG_B



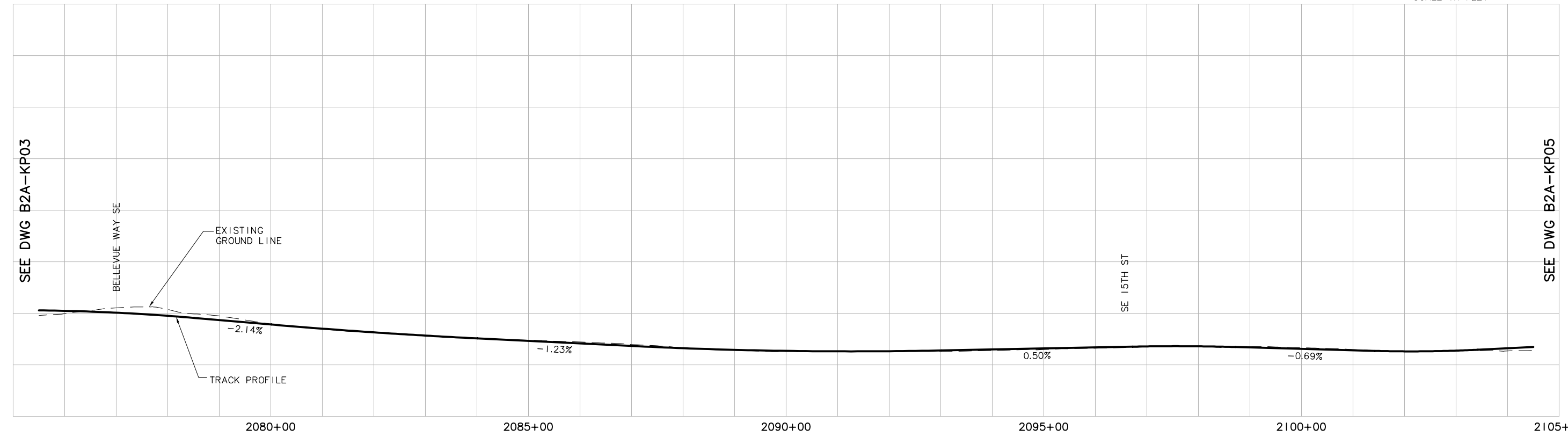
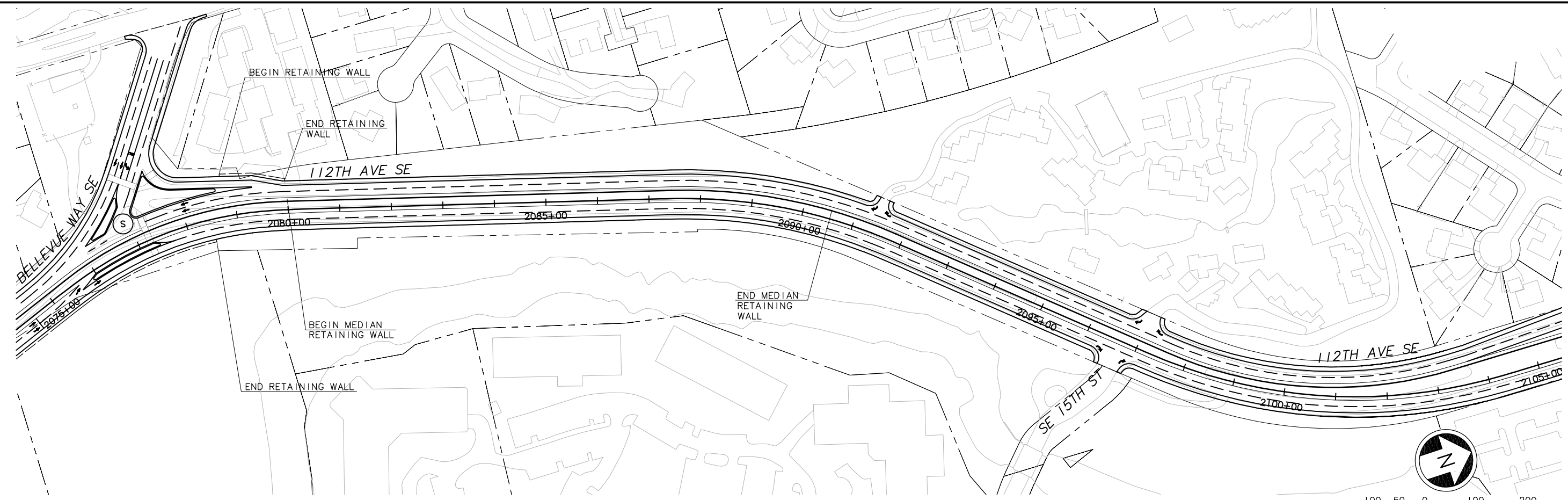
**EAST LINK PROJECT
 SEGMENT B
 ALTERNATIVE B2A
 TRACK PLAN & PROFILE**

Drawing No.: **B2A-KP03**
 Sheet No.: **B-39**
 Rev: _____

XREF'S
 Resolved
 z9-2234h
 z9-g10010
 ELB_B2A_KA
 ELB_B2A_CM
 ELB_B2A_JO
 REG-DCON
 x0222rx
 x0222sf
 x0522rx
 x0522sf
 x0525rx
 x0525sf
 Unresolved
 key_East
 LTSCALE
 1=1

SEE DWG B2A-KP03

SEE DWG B2A-KP05



c:\work\ELBIB2A_KP04.dwg
 10/16/08 08:44 : eackerm OE5396

No.	Date	Dsn.	Chk.	App.	Revisions

Designed By:
 Drawn By:
 Checked By:
 Approved By:

**FEIS
 CONCEPTUAL**

CH2MHILL
 IN ASSOCIATION WITH
PARSONS & INCA
 ENGINEERS INC.

Submitted: _____ Date: _____
 Approved: _____ Date: _____

SOUNDTRANSIT

Scale: H: 1"=100'; V: 1"=25'
 Filename: ELBIB2A_KP04.dwg
 Contract No.: EL_SEG_B

**EAST LINK PROJECT
 SEGMENT B
 ALTERNATIVE B2A
 TRACK PLAN & PROFILE**

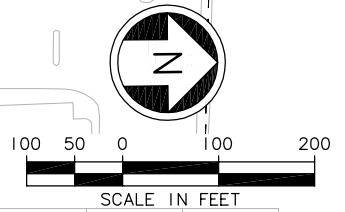
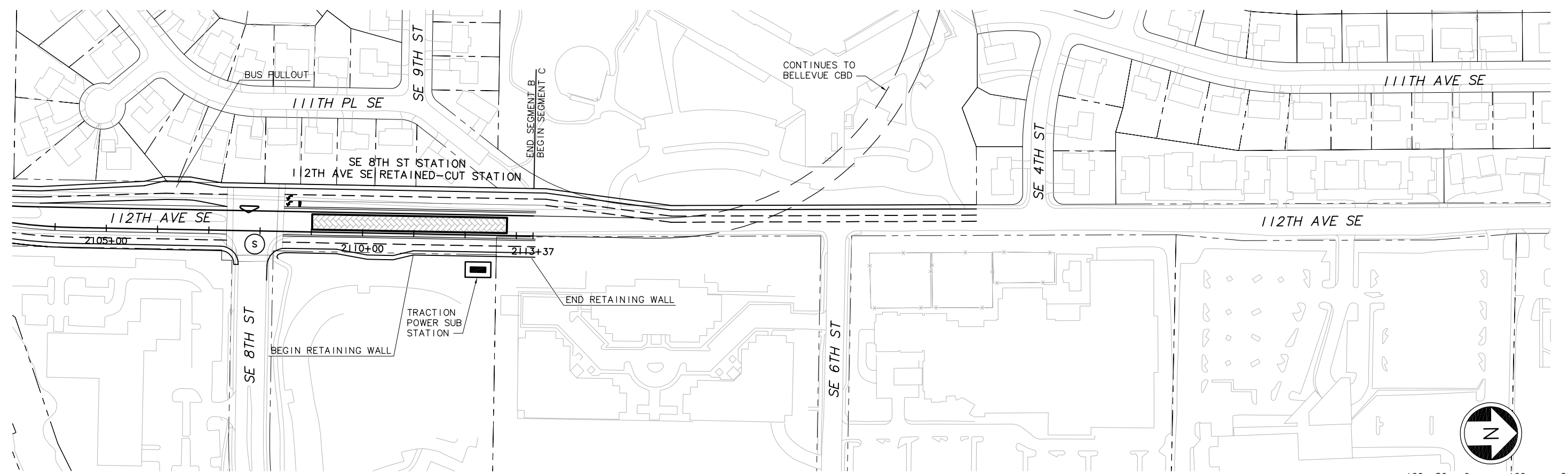
**THIS PRINT RELEASED
 HALF SCALE**

Drawing No.: **B2A-KP04**
 Sheet No.: _____ Rev.: _____
B-40

XREF'S
 Resolved
 z9-2234h
 z9-910010
 ELB_B2A_KA
 ELB_B2A_CM
 ELB_B2A_JO
 ELC_C2T_KA
 REG-DOON
 x0522rx
 x0522sf
 x0525rx
 x0525sf
 Unresolved
 key_East

LTSCALE
 1/8"

SEE DWG B2A-KP04



c:\work\ELB\B2A_KP05.dwg
 10/16/08 08:44 : eackerm OE5396

Designed By:	
Drawn By:	
Checked By:	
Approved By:	

No.	Date	Dsn.	Chk.	App.	Revisions

FEIS
 CONCEPTUAL

CH2MHILL
 IN ASSOCIATION WITH
PARSONS & INCA
 ENGINEERS INC.

Submitted: _____ Date: _____ Approved: _____ Date: _____

SOUNDTRANSIT

Submitted: _____ Date: _____ Approved: _____ Date: _____

Scale:
 H: 1" = 100'; V: 1" = 25'
 Filename:
 ELB1B2A_KP05.dwg
 Contract No.:
 EL_SEG_B

EAST LINK PROJECT
 SEGMENT B
 ALTERNATIVE B2A
 TRACK PLAN & PROFILE

THIS PRINT RELEASED
 HALF SCALE

Drawing No.: **B2A-KP05**

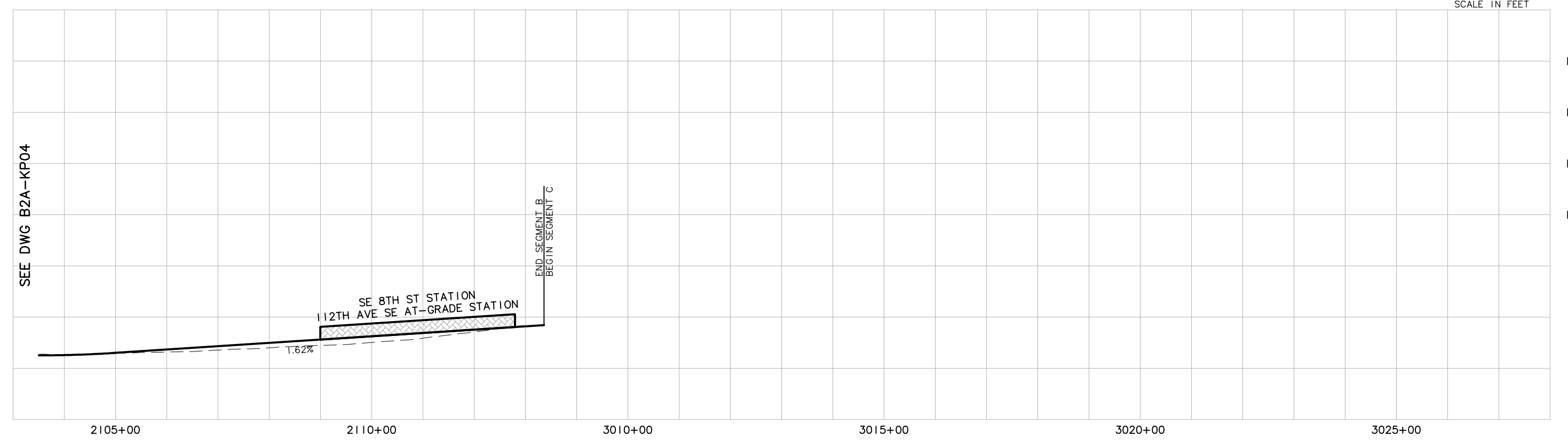
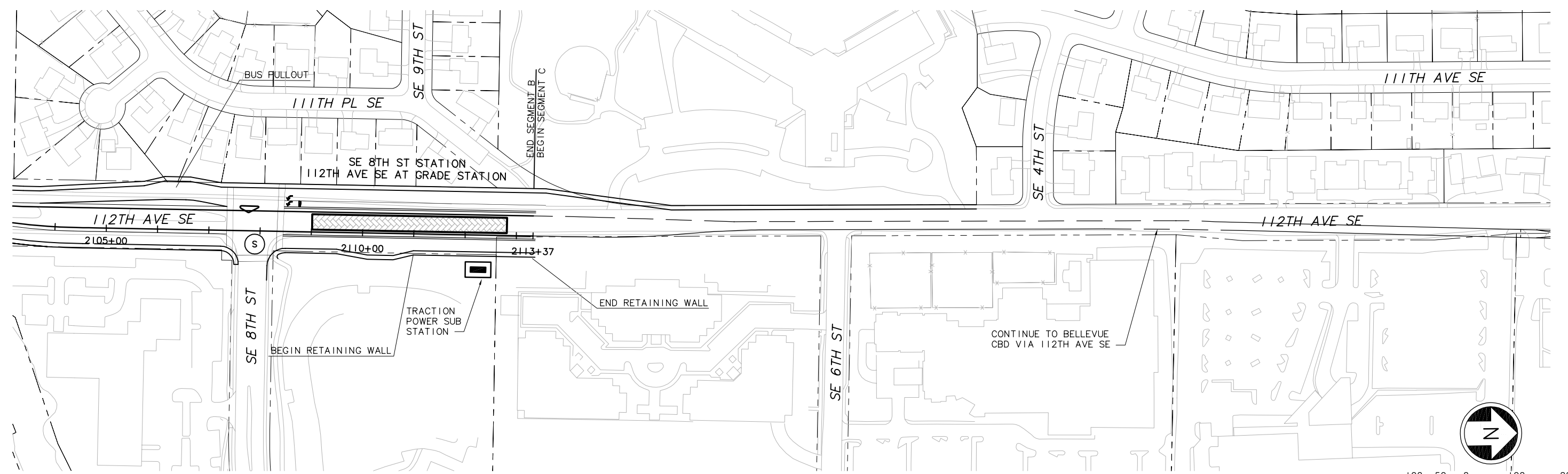
Sheet No.: **B-41**

Rev.: _____

XREF'S
 Resolved
 z9-2234h
 z9-g10010
 ELB_B2A_KA
 ELB_B2A_CM
 ELB_B2A_JO
 ELC_C4A_KA
 REG-DOON
 x0522rx
 x0522sf
 x0525rx
 x0525sf
 Unresolved
 key_East

LTSCALE
 1=

SEE DWG B2A-KP04



c:\work\ELBIB2A_KP05A.dwg
 10/16/08 08:44 : eackerm OE5396

No.	Date	Dsn.	Chk.	App.	Revisions

Designed By:
 Drawn By:
 Checked By:
 Approved By:

FEIS
 CONCEPTUAL

CH2MHILL
 IN ASSOCIATION WITH
PARSONS & INCA
 ENGINEERS INC.

Submitted: _____ Date: _____
 Approved: _____ Date: _____

SOUNDTRANSIT

Submitted: _____ Date: _____
 Approved: _____ Date: _____

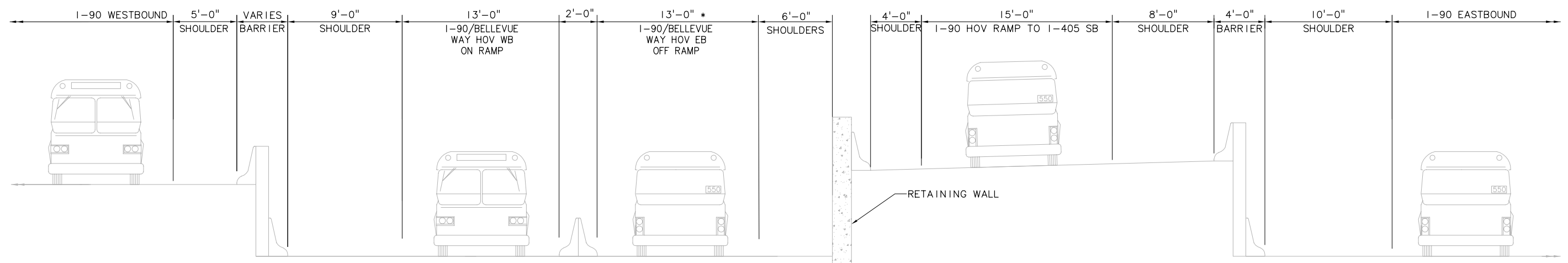
Scale: H: 1"=100'; V: 1"=25'
 Filename: ELBIB2A_KP05A.dwg
 Contract No.: EL_SEG_B
 Date: _____

EAST LINK PROJECT
 SEGMENT B
 ALTERNATIVE B2A
 TRACK PLAN & PROFILE

THIS PRINT RELEASED
 HALF SCALE

Drawing No.: B2A-KP05a
 Sheet No.: B-42
 Rev.: _____

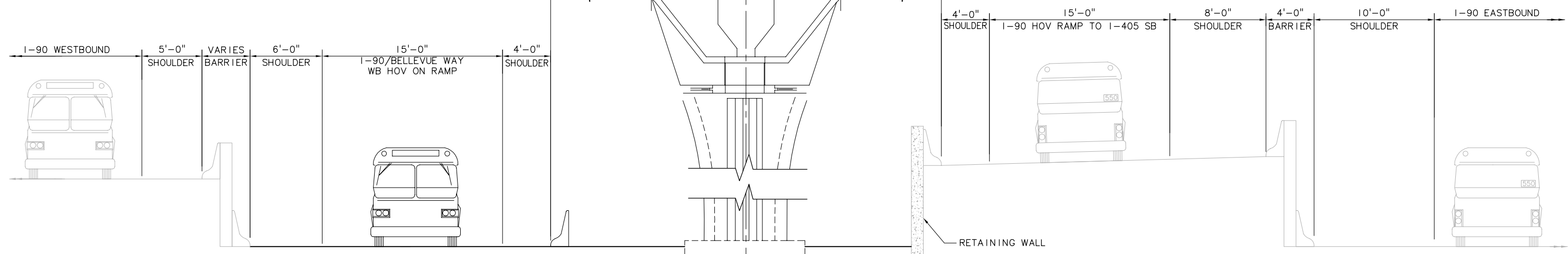
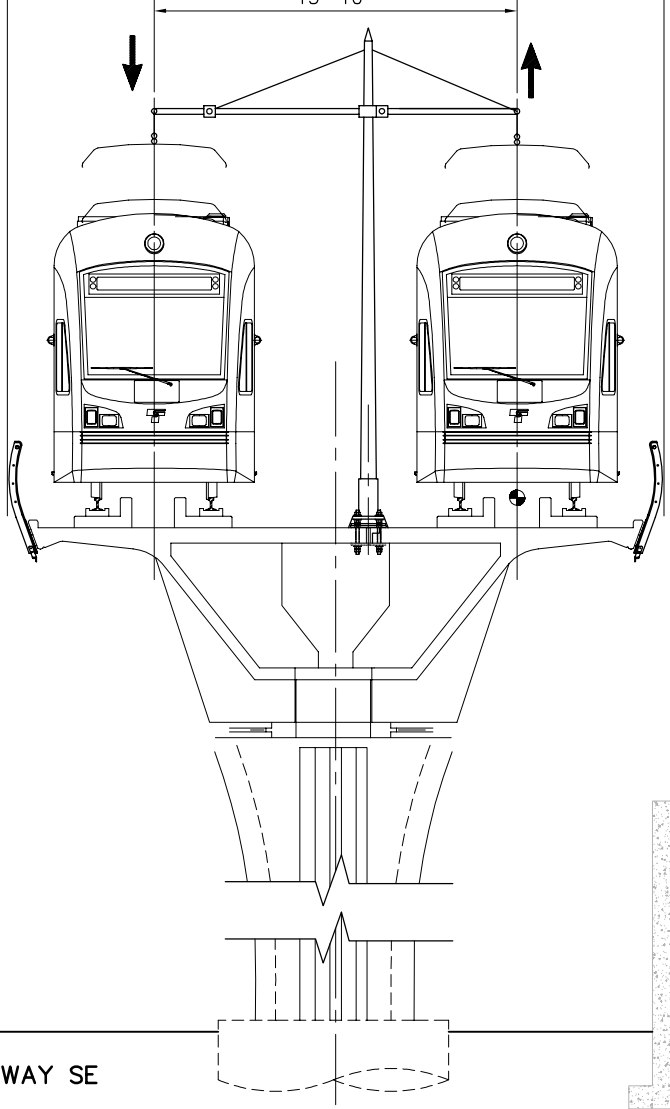
XREF'S
 Resolved
 ZG-2234H
 REG-DCON
 Unresolved
 LTSCALE
 1=1



EXISTING ROADWAY SECTION - I-90 RAMP TO BELLEVUE WAY SE
 SCALE: NTS

* PER R8-A STAGE I COMPLETION

2'-0" CLEAR ZONE 28'-6" 2'-0" CLEAR ZONE



PROPOSED LRT SECTION I-90 RAMP TO BELLEVUE WAY SE
 ALIGNMENT: B2A
 ELEVATED DIRECT FIXATION DOUBLE TRACK GUIDEWAY
 SCALE: NTS

c:\work\ELB1B2A_KX01.dwg
 10/16/08 08:44 : eackerm OE5396

No.	Date	Dsn.	Chk.	App.	Revisions

Designed By:
 Drawn By:
 Checked By:
 Approved By:

**FEIS
 CONCEPTUAL**

CH2MHILL
 IN ASSOCIATION WITH
PARSONS & INCA
 ENGINEERS INC.

Submitted: Date: Approved: Date:

SOUNDTRANSIT

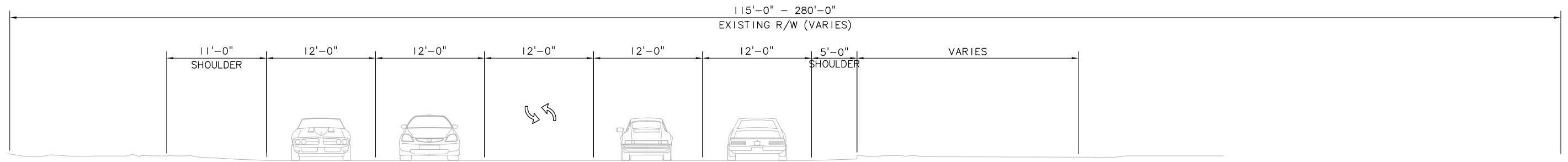
Scale: NTS
 Filename: ELB1B2A_KX01.dwg
 Contract No.: EL_SEG_B

**EAST LINK PROJECT
 SEGMENT B
 ALTERNATIVE B2A
 TYPICAL SECTION**

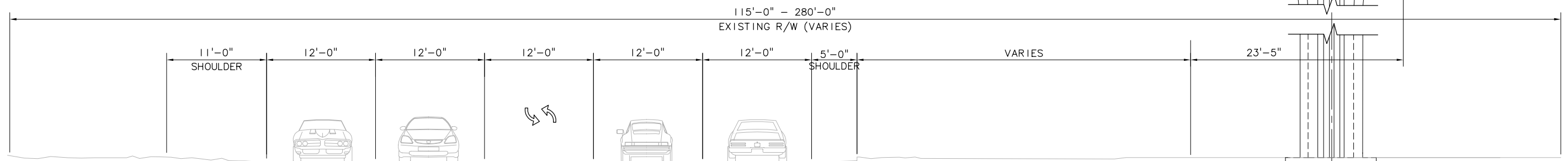
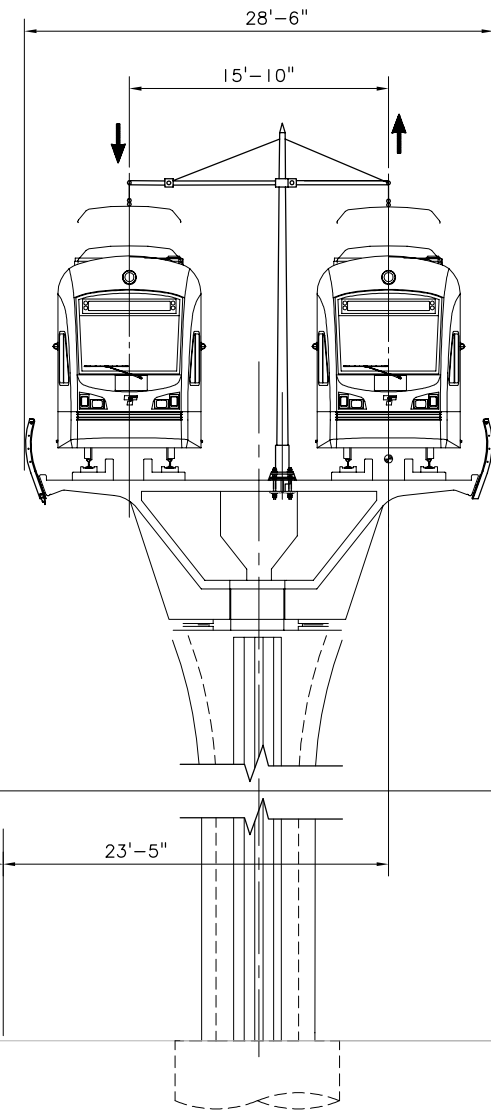
THIS PRINT RECORDED
 HALF SCALE

Drawing No.: B2A-KX01
 Sheet No.: Rev.:
B-43

XREF'S
 Resolved
 ZG-2234H
 REG-DCON
 Unresolved
 LTSCALE
 1=1



EXISTING ROADWAY SECTION – BELLEVUE WAY SE (SOUTH OF S. BELLEVUE P&R)
 SCALE: NTS



EXISTING ROADWAY & PROPOSED LRT SECTION – BELLEVUE WAY SE
ALIGNMENT: B2A
ELEVATED DIRECT FIXATION DOUBLE TRACK GUIDEWAY
 SCALE: NTS

c:\work\ELB1B2A_KX02.dwg
 10/16/08 08:45 : eackerm OE5396

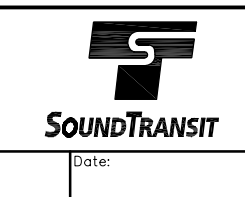
No.	Date	Dsn.	Chk.	App.	Revisions

Designed By:
 Drawn By:
 Checked By:
 Approved By:

**FEIS
 CONCEPTUAL**

CH2MHILL
 IN ASSOCIATION WITH
PARSONS & INCA
 ENGINEERS INC.

Submitted: Date: Approved: Date:

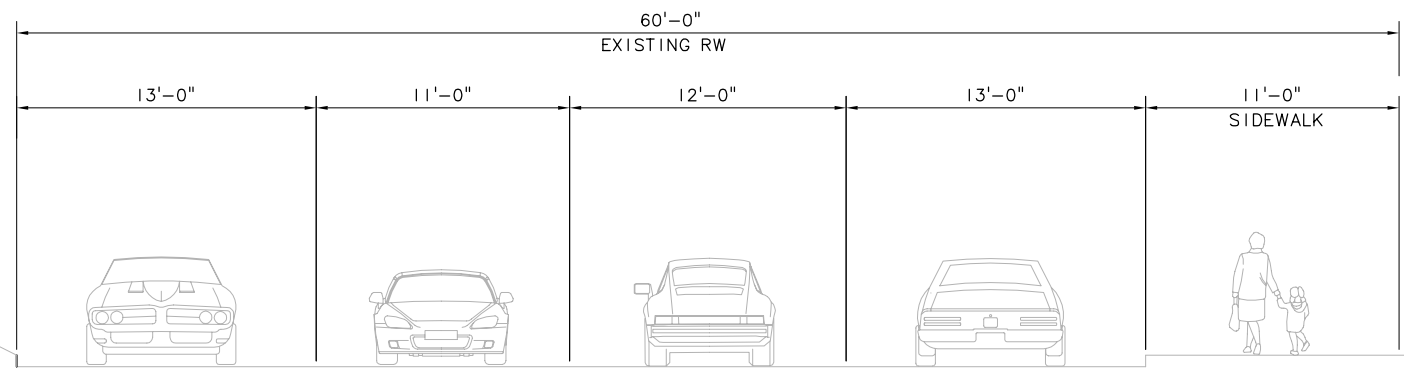


Scale: NTS
 Filename: ELB1B2A_KX02.dwg
 Contract No.: EL_SEG_B

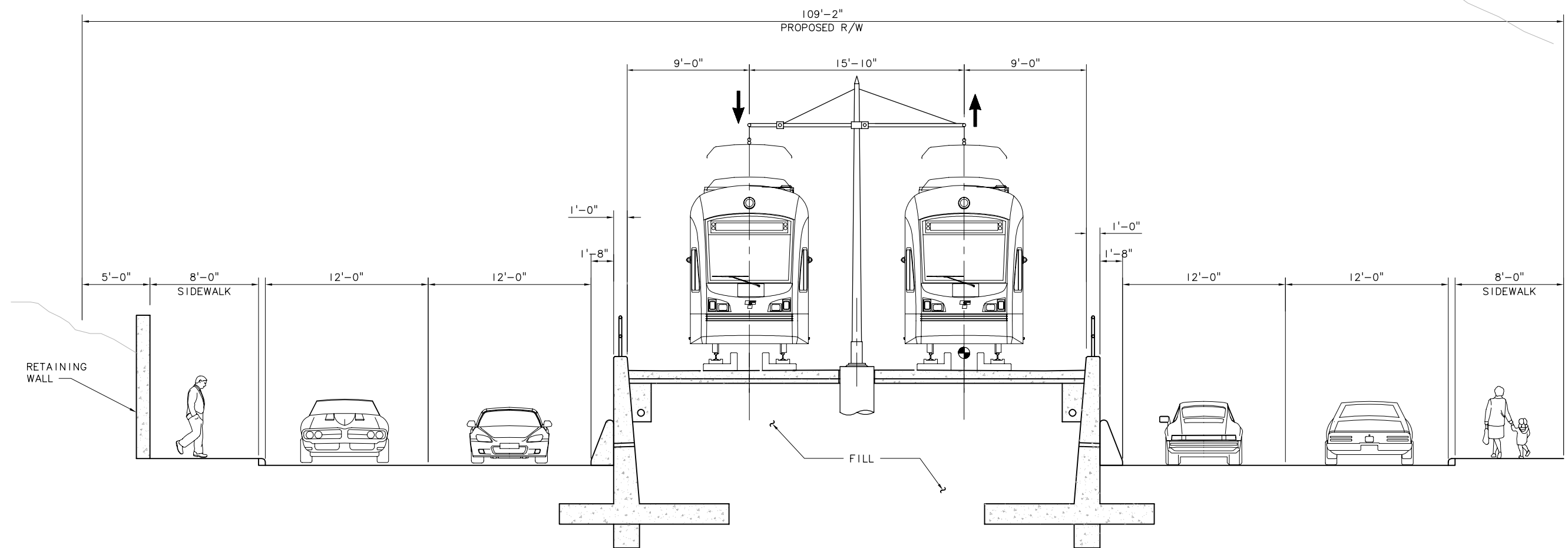
EAST LINK PROJECT
SEGMENT B
ALTERNATIVE B2A
TYPICAL SECTION

Drawing No.: **B2A-KX02**
 Sheet No.: Rev.:
B-44

XREF'S
 Resolved
 ZG-2234H
 REG-DCON
 Unresolved
 LTSCALE
 1=1



EXISTING ROADWAY SECTION – BELLEVUE WAY SE (SOUTH OF WINTERS HOUSE)
 SCALE: NTS



PROPOSED ROADWAY & LRT SECTION – BELLEVUE WAY SE (WIDENING TO WEST AND EAST)
 ALIGNMENT: B2A
 AT-GRADE DIRECT FIXATION DOUBLE TRACK GUIDEWAY
 SCALE: NTS

c:\work\ELB1B2A_KX03.dwg
 10/16/08 08:45 : eackerm OE5396

No.	Date	Dsn.	Chk.	App.	Revisions

Designed By:
 Drawn By:
 Checked By:
 Approved By:

**FEIS
 CONCEPTUAL**

CH2MHILL
 IN ASSOCIATION WITH
PARSONS & INCA
 ENGINEERS INC.

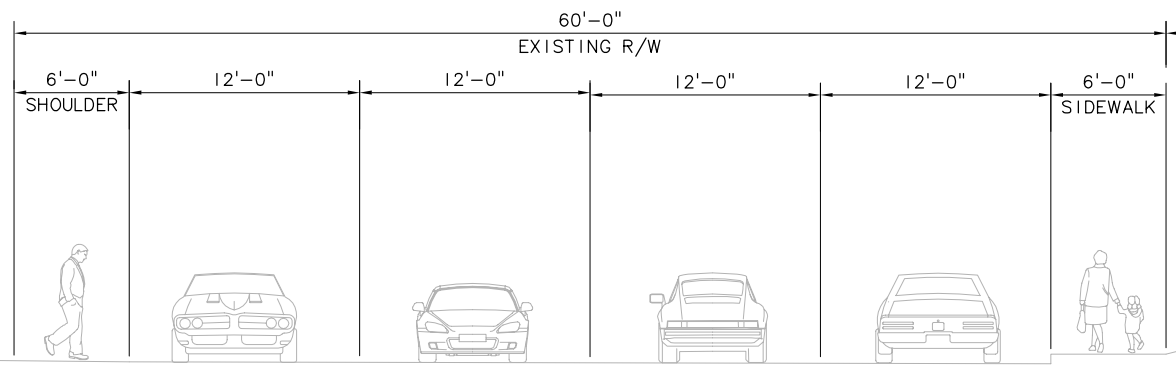
Submitted: Date: Approved: Date:

Scale: NTS
 Filename: ELB1B2A_KX03.dwg
 Contract No.: EL_SEG_B
 Date:

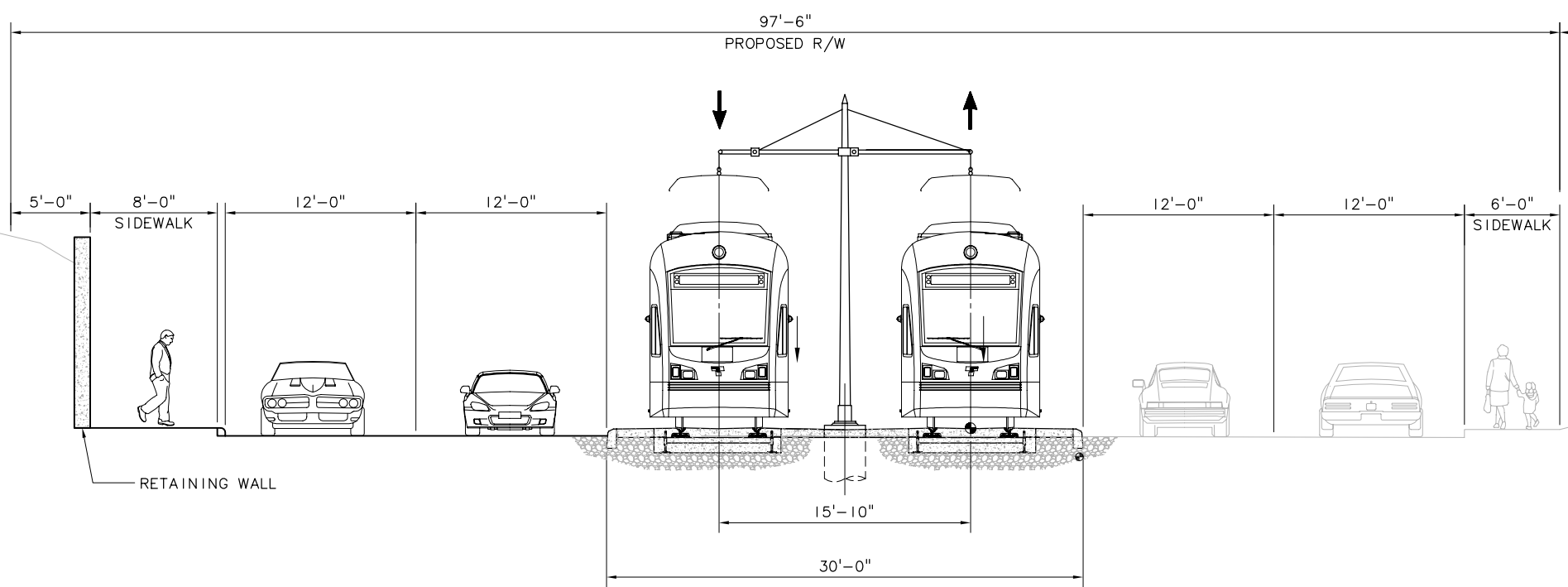
**EAST LINK PROJECT
 SEGMENT B
 ALTERNATIVE B2A
 TYPICAL SECTION**

Drawing No.: B2A-KX03
 Sheet No.: Rev.:
B-45

XREF'S
 Resolved
 ZG-2234H
 REG-DCON
 Unresolved
 LTSCALE
 1=1



EXISTING ROADWAY SECTION – BELLEVUE WAY SE AT THE WINTERS HOUSE
 SCALE: NTS



PROPOSED ROADWAY & LRT SECTION – BELLEVUE WAY SE AT THE WINTERS HOUSE (WIDENING TO WEST)
 ALIGNMENT: B2A
 AT-GRADE EMBEDDED DOUBLE TRACK GUIDEWAY
 SCALE: NTS

c:\work\ELB2A_KX04.dwg
 10/16/08 08:45 : eackerm OE5396

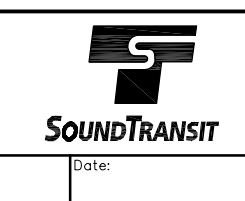
No.	Date	Dsn.	Chk.	App.	Revisions

Designed By:
 Drawn By:
 Checked By:
 Approved By:

**FEIS
 CONCEPTUAL**

CH2MHILL
 IN ASSOCIATION WITH
PARSONS & INCA
 ENGINEERS INC.

Submitted: Date: Approved: Date:

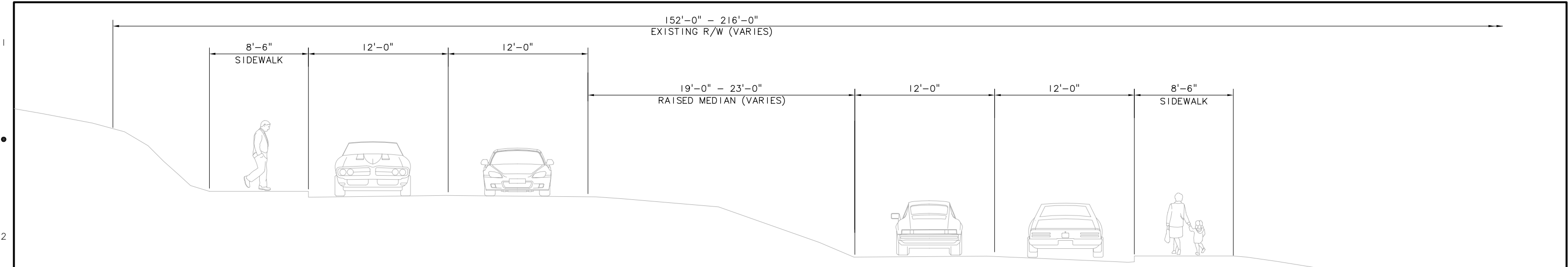


Scale: NTS
 Filename: ELB1B2A_KX04.dwg
 Contract No.: EL_SEG_B

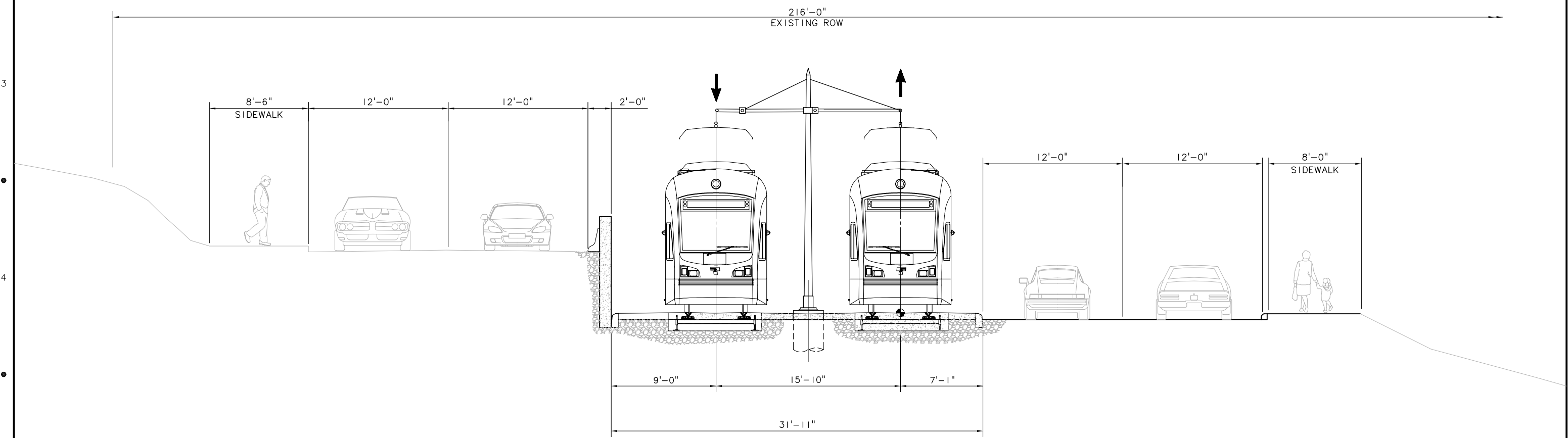
**EAST LINK PROJECT
 SEGMENT B
 ALTERNATIVE B2A
 TYPICAL SECTION**

Drawing No.: B2A-KX04
 Sheet No.: Rev.:
B-46

XREF'S
 Resolved
 ZG-2234H
 REG-DCON
 Unresolved
 LTSCALE
 1=1



EXISTING ROADWAY SECTION - ALONG 112TH AVE SE
 SCALE: NTS



PROPOSED ROADWAY & LRT SECTION - ALONG 112TH AVE SE
 ALIGNMENT: B2A
 AT-GRADE EMBEDDED DOUBLE TRACK GUIDEWAY
 SCALE: NTS

c:\work\ELB1B2A_KX05.dwg
 10/16/08 08:46 : eackerm OE5396

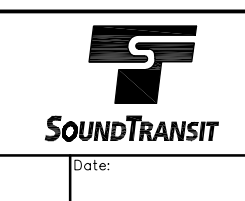
No.	Date	Dsn.	Chk.	App.	Revisions

Designed By:
 Drawn By:
 Checked By:
 Approved By:

**FEIS
 CONCEPTUAL**

CH2MHILL
 IN ASSOCIATION WITH
PARSONS & INCA
 ENGINEERS INC.

Submitted: Date:
 Approved: Date:

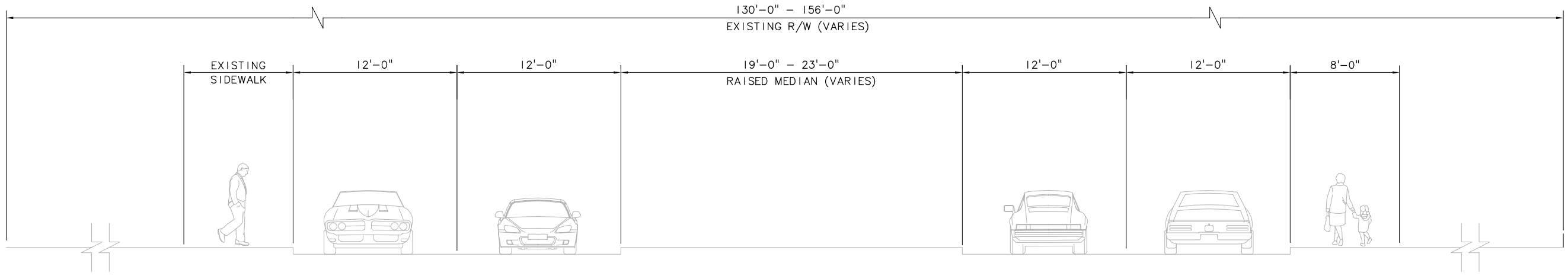


Scale: NTS
 Filename: ELB1B2A_KX05.dwg
 Contract No.: EL_SEG_B
 Date:

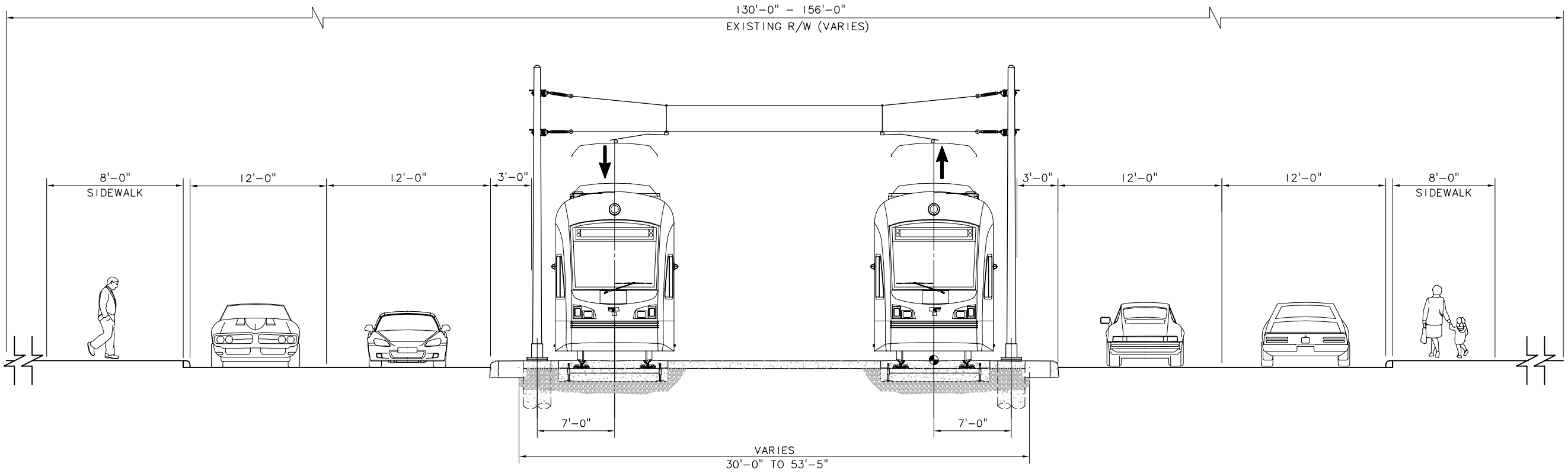
**EAST LINK PROJECT
 SEGMENT B
 ALTERNATIVE B2A
 TYPICAL SECTION**

Drawing No.: B2A-KX05
 Sheet No.: Rev.:
B-47

XREF'S
 Resolved
 Z0-2234H
 REG-DCON
 Unresolved
 LTSCALE
 1=1



EXISTING ROADWAY SECTION - 112TH AVE SE (SOUTH OF SE 8TH ST)
 SCALE: NTS



PROPOSED ROADWAY & LRT SECTION - 112TH AVE SE
ALIGNMENT: B2A
AT-GRADE EMBEDDED DOUBLE TRACK GUIDEWAY
 SCALE: NTS

c:\work\ELB\B2A_KX06.dwg
 10/16/08 08:46 : eackerm OE5396

No.	Date	Dsn.	Chk.	App.	Revisions

Designed By:
 Drawn By:
 Checked By:
 Approved By:

**FEIS
 CONCEPTUAL**

CH2MHILL
 IN ASSOCIATION WITH
PARSONS & INCA
 ENGINEERS INC.

Submitted: Date: Approved: Date:

SOUNDTRANSIT

Scale: NTS
 Filename: ELB1B2A_KX06.dwg
 Contract No.: EL_SEG_B

EAST LINK PROJECT
SEGMENT B
ALTERNATIVE B2A
TYPICAL SECTION

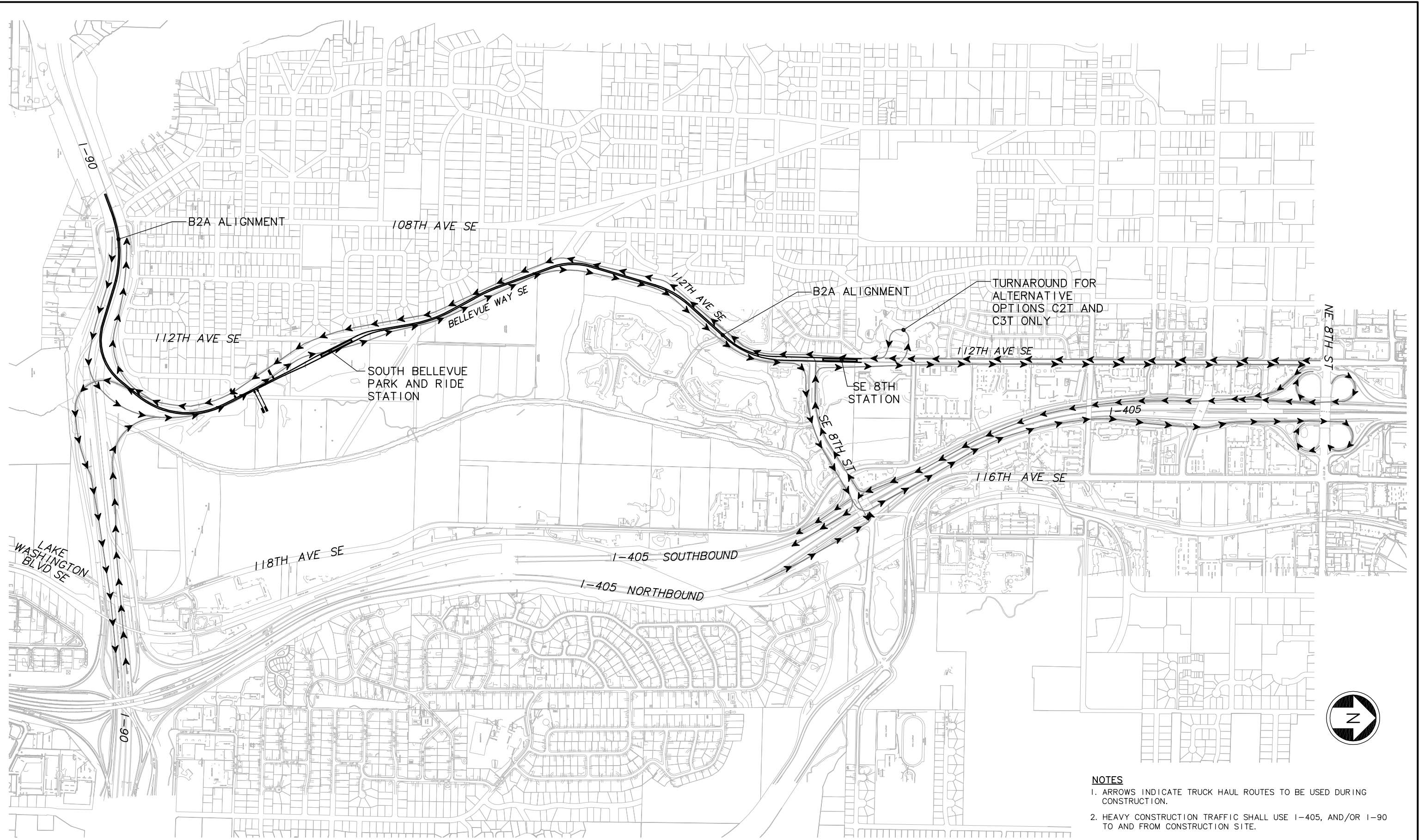
THIS PRINT REDUCED
 HALF SCALE

Drawing No.: **B2A-KX06**
 Sheet No.: Rev.:
B-48

XREF'S
 Resolved
 ELB_B2A_KA
 REG-DCON
 Zg-2234h
 x0216rx
 x0216sf
 x0219rx
 x0222rx
 x0225rx
 x0228rx
 x0516rx
 x0516sf
 x0519rx
 x0519sf
 x0522rx
 x0522sf
 x0525rx
 x0525sf
 x0528rx
 x0528sf
 x0531rx
 x0531sf
 x0816rx
 x0816sf
 x0819rx
 x0819sf
 x0822rx
 x0822sf
 x0825rx
 x0825sf
 x0828rx
 x9616rx
 x9619rx
 x9916rx
 x9919rx

Unresolved
 LTSCALE
 1=1

c:\work\ELBIB2A_CC01.dwg
 10/16/08 08:42 : eackerm OE5396



- NOTES**
- ARROWS INDICATE TRUCK HAUL ROUTES TO BE USED DURING CONSTRUCTION.
 - HEAVY CONSTRUCTION TRAFFIC SHALL USE I-405, AND/OR I-90 TO AND FROM CONSTRUCTION SITE.

No.	Date	Dsn.	Chk.	App.	Revisions

Designed By:
 Drawn By:
 Checked By:
 Approved By:

**FEIS
 CONCEPTUAL**

CH2MHILL
 IN ASSOCIATION WITH
PARSONS & INCA
 ENGINEERS INC.

SOUNDTRANSIT

Scale: NTS
 Filename: ELBIB2A_CC01.dwg
 Contract No.: EL_SEG_B
 Date:

**EAST LINK PROJECT
 SEGMENT B
 ALTERNATIVE B2A**

CONSTRUCTION TRUCK HAUL ROUTE PLAN

Drawing No.: B2A-CC01
 Sheet No.: B-49
 Rev.: