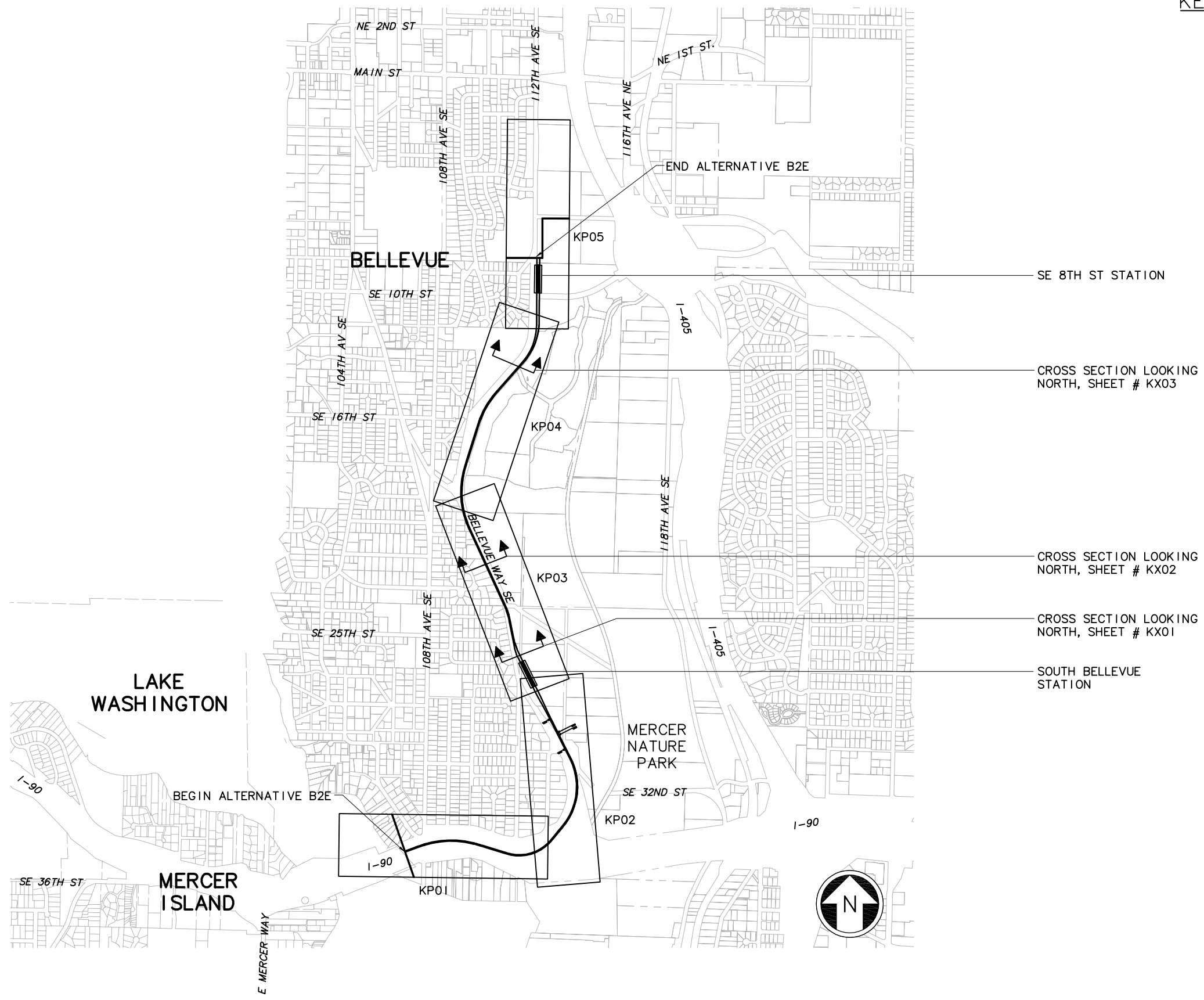


XREF'S
 Resolved
 ELB_B2E_KA
 REG-DCON
 ZG-2234H
 x0216rx
 x0219rx
 x0222rx
 x0225rx
 x0228rx
 x0516rx
 x0519rx
 x0522rx
 x0525rx
 x0528rx
 x0816rx
 x0819rx
 x0822rx
 x0825rx
 x0828rx
 x9316rx
 x9319rx
 x9322rx
 x9616rx
 x9619rx
 x9916rx
 x9919rx
 Unresolved
 St_Names_E_20
 key_East
 LTSCALE
 1=1



c:\work\ELBIB2E_GZ05.dwg
 10/16/08 08:47 : eackerm OE5396

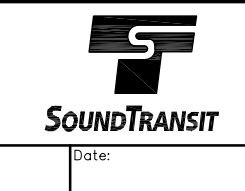
No.	Date	Dsn.	Chk.	App.	Revisions

Designed By:
 Drawn By:
 Checked By:
 Approved By:

**FEIS
 CONCEPTUAL**

CH2MHILL
 IN ASSOCIATION WITH
PARSONS & INCA
 ENGINEERS INC.

Submitted: Date: Approved: Date:



Scale: NTS
 Filename: ELBIB2E_GZ05.dwg
 Contract No.: EL_SEG_B
 Date:

**EAST LINK PROJECT
 SEGMENT B
 ALTERNATIVE B2E**

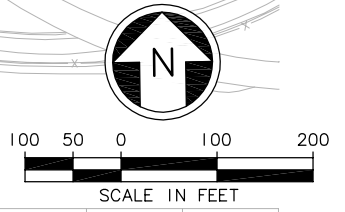
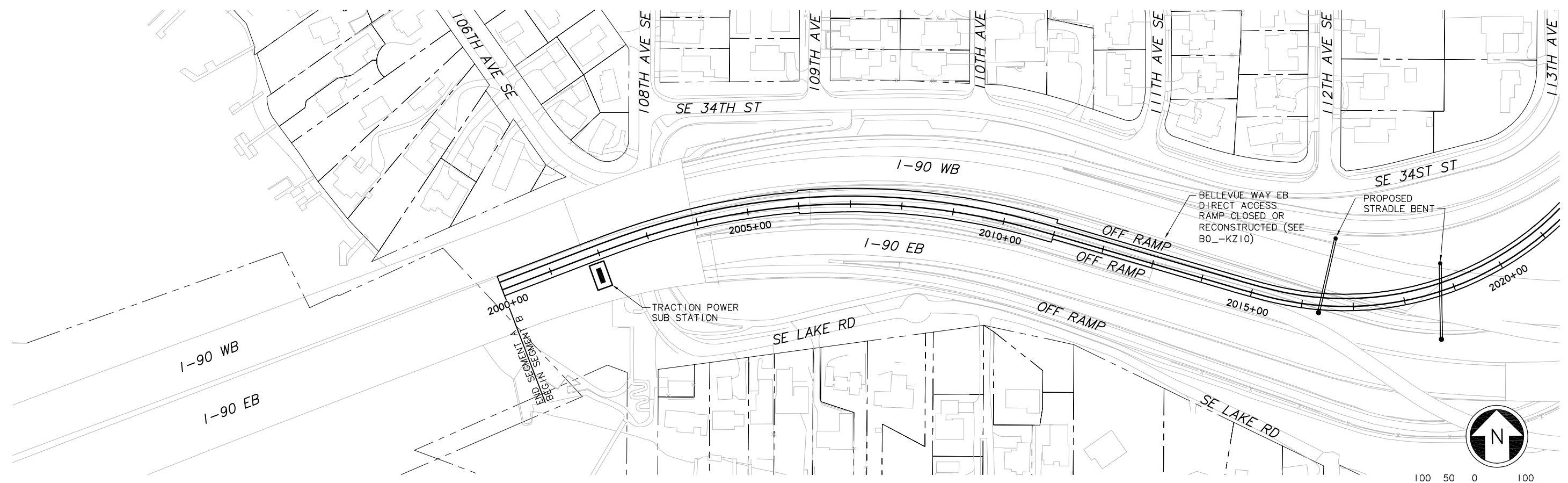
KEY PLAN

Drawing No.: B2E-GZ05
 Sheet No.: Rev.:
B-50

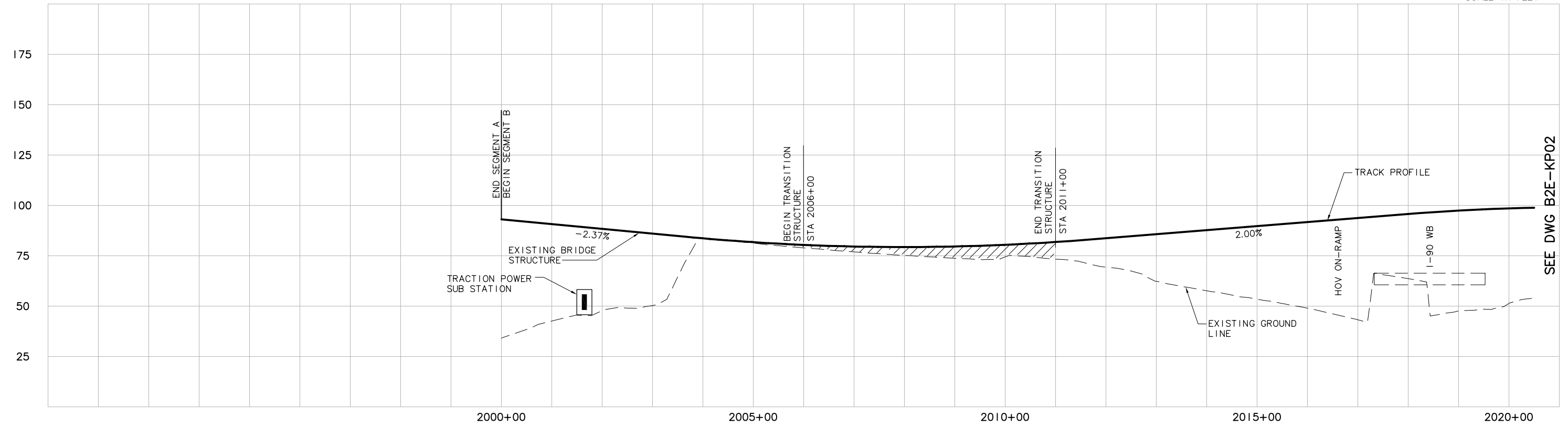
XREF'S
 Resolved
 z9-2234h
 z9-g10010
 ELB_B2E_CM
 ELB_B2E_KA
 ELB_B2E_JO
 REG-DCON
 x0216rx
 x0216sf
 x0516rx
 x0516sf
 Unresolved
 key_East

LTSCALE
 1=1

1
 2
 3



SEE DWG B2E-KP02



SEE DWG B2E-KP02

c:\work\ELBIB2E_KP01.dwg
 11/10/08 13:25 : eackerm OE5396

Designed By:					
Drawn By:					
Checked By:					
Approved By:					
No.	Date	Dsn.	Chk.	App.	Revisions

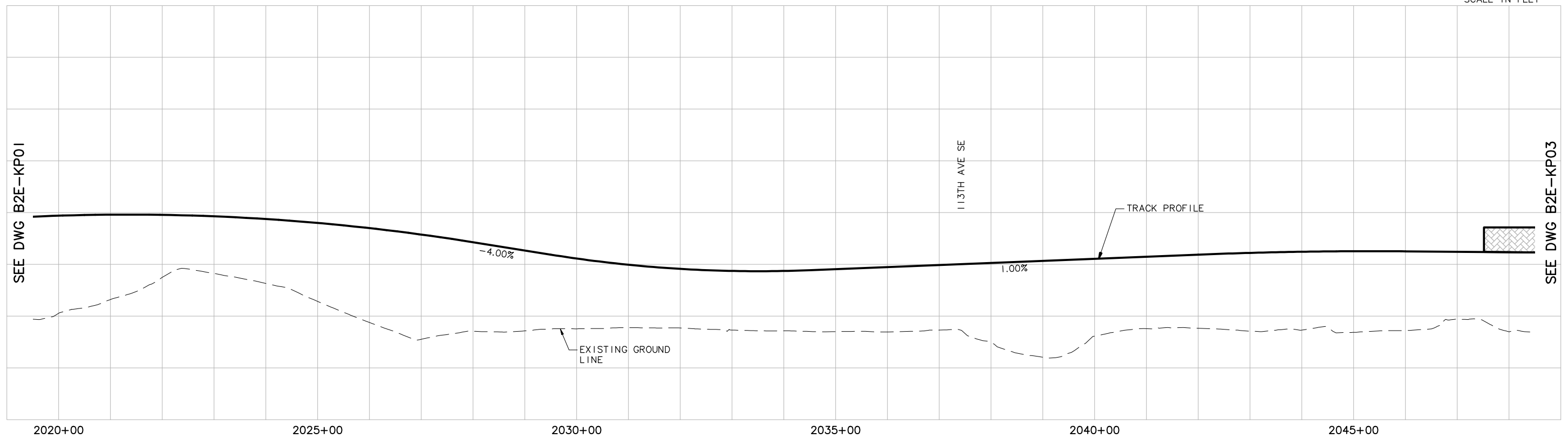
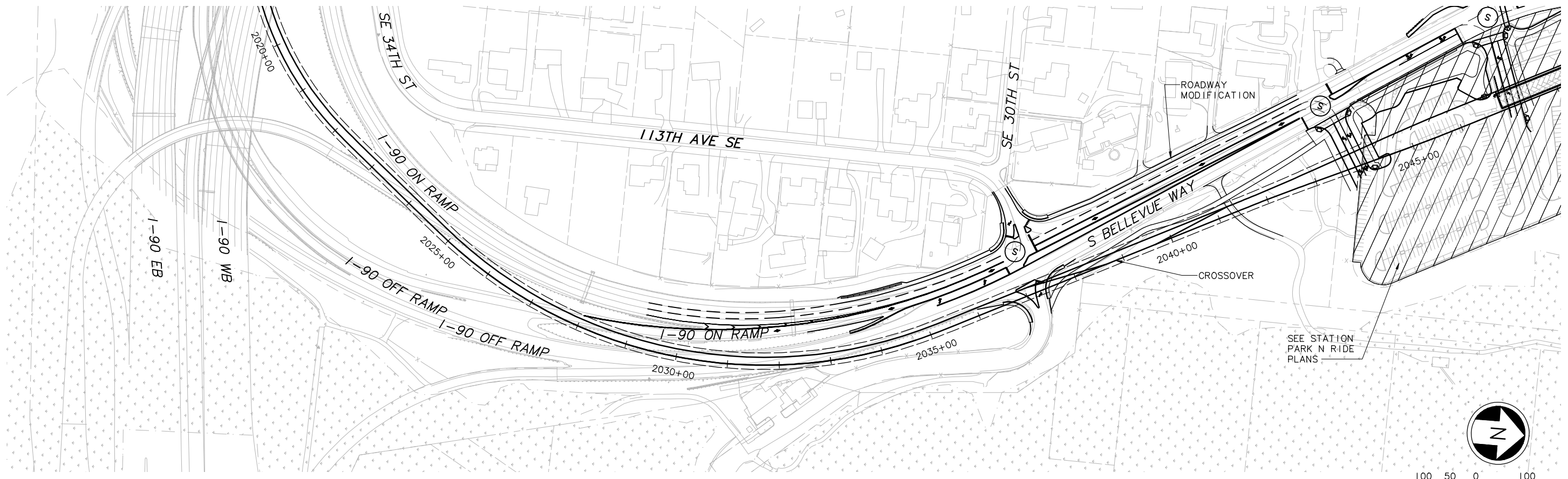
FEIS CONCEPTUAL	CH2MHILL <small>IN ASSOCIATION WITH</small> PARSONS & INCA <small>ENGINEERS INC.</small>		Scale: H: 1"=100'; V: 1"=25' Filename: ELBIB2E_KP01.dwg Contract No.: EL_SEG_B	EAST LINK PROJECT SEGMENT B ALTERNATIVE B2E TRACK PLAN & PROFILE	Drawing No.: B2E-KP01 Sheet No.: B-51
	Submitted:	Date:	Approved:	Date:	Rev.:



DWG. INFO:
 LTSCALE:
 1=1
 XREFs:
 -Attach:
 z9-2234h
 z9-g10010
 -Overlay:
 ELB_B2E_CM
 ELB_B2E_KA
 x0516rx
 x0519rx
 x0519sf
 -Unresolved:

SEE DWG B2E-KP01

SEE DWG B2E-KP03



c:\work\feis\segment_b\b2e\ELBIB2E_KP02.dwg
 04/27/11 16:29 : khuum 0E6585

No.	Date	Dsn.	Chk.	App.	Revisions

Designed By:
 Drawn By:
 Checked By:
 Approved By:

FEIS
 CONCEPTUAL

CH2MHILL
 IN ASSOCIATION WITH
PARSONS & INCA
 ENGINEERS INC.

Submitted: Date: Approved: Date:

SOUNDTRANSIT

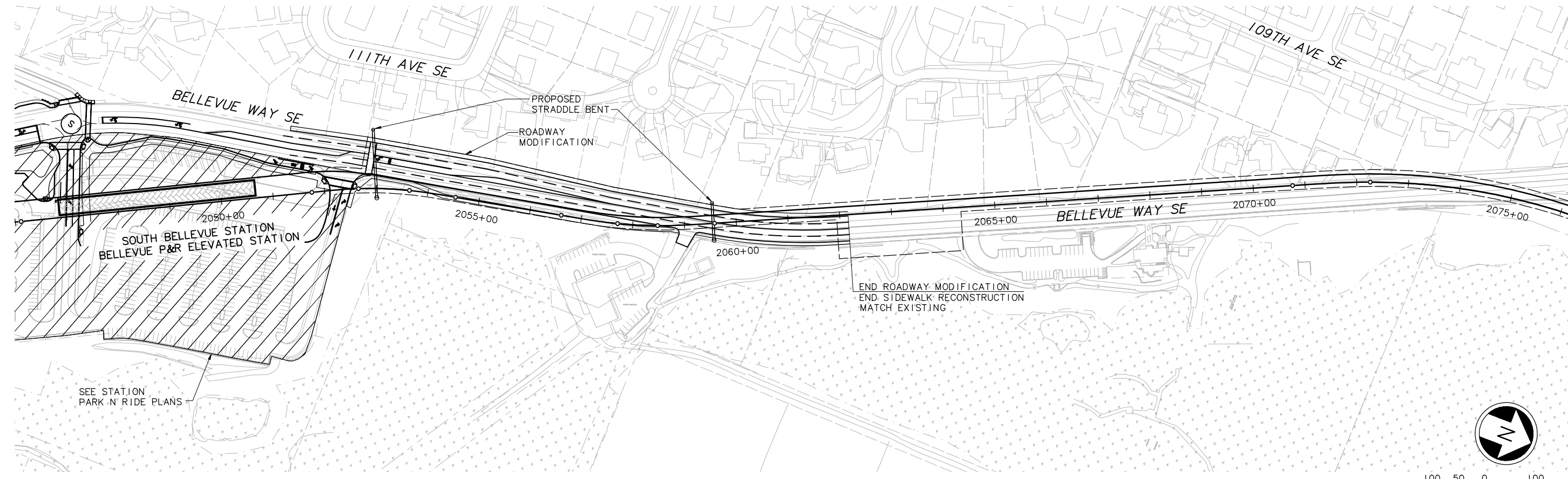
Scale:
 H: 1"=100'; V: 1"=25'
 Filename:
 ELBIB2E_KP02.dwg
 Contract No.:
 EL_SEG_B



EAST LINK PROJECT
 SEGMENT B
 ALTERNATIVE B2E
 TRACK PLAN & PROFILE

Drawing No.:
B2E-KP02
 Sheet No.: Rev.:
B-52

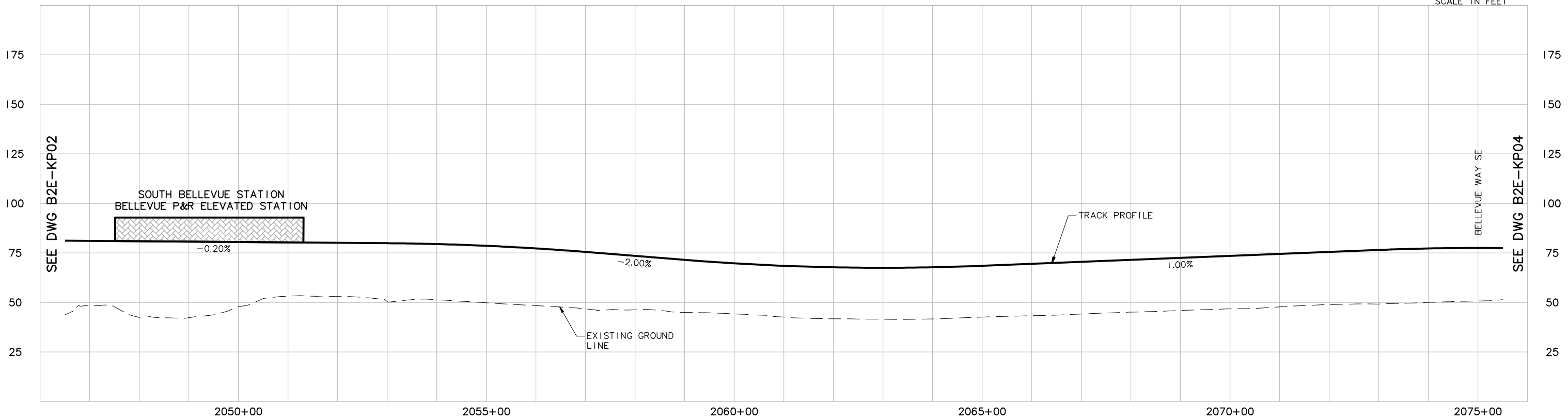
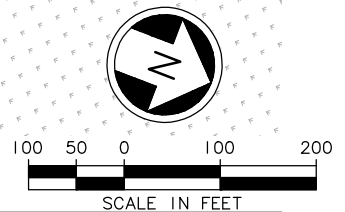
DWG INFO:
 LTSCALE:
 1=1
 XREFs:
 -Attach:
 z9-234h
 z9-g10010
 -Overlay:
 ELB_B2E_CM
 ELB_B2E_KA
 x0219r
 x0219sf
 x0222r
 x0222sf
 x0519r
 x0519sf
 x0522r
 x0522sf
 x0525r
 x0525sf
 -Unresolved:



SEE DWG B2E-KP02

SEE DWG B2E-KP04

SEE STATION
 PARK 'N RIDE PLANS



SEE DWG B2E-KP02

SEE DWG B2E-KP04

c:\work\feis\segment_b\2e\ELB\B2E_KP03.dwg
 04/27/11 16:32 : khuum 0E6585

Designed By:	
Drawn By:	
Checked By:	
Approved By:	

**FEIS
 CONCEPTUAL**



Scale: H: 1"=100'; V: 1"=25'
Filename: ELB\B2E_KP03.dwg
Contract No.: EL_SEG_B
Date:

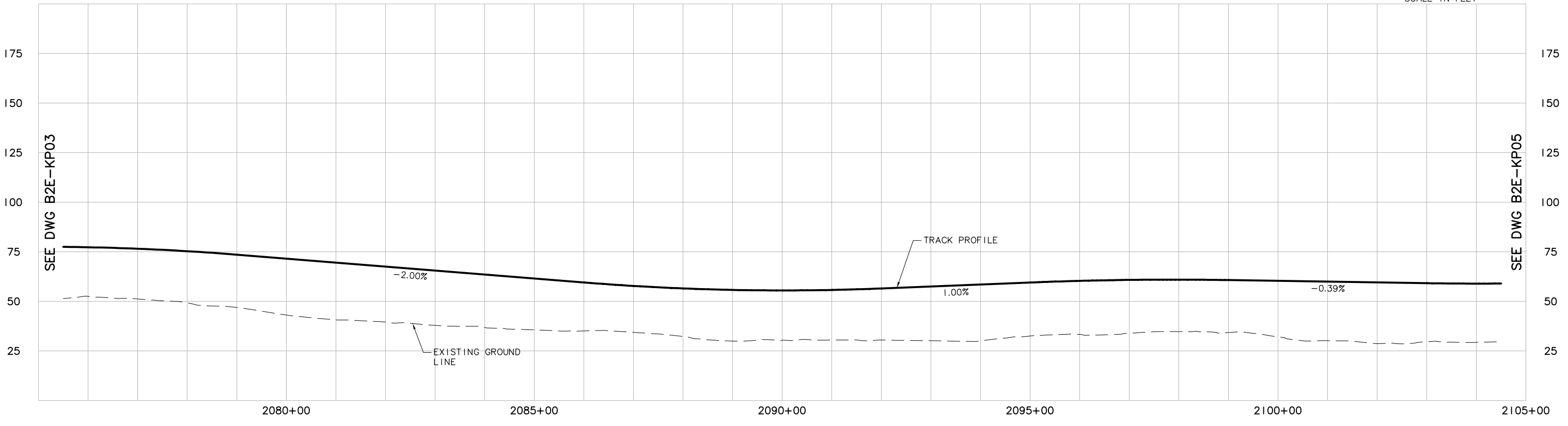


**EAST LINK PROJECT
 SEGMENT B
 ALTERNATIVE B2E
 TRACK PLAN & PROFILE**

Drawing No.:	B2E-KP03
Sheet No.:	B-53
Rev.:	

No.	Date	Dsn.	Chk.	App.	Revisions

XREF'S
 Resolved
 z9-2234h
 z9-g10010
 ELB_B2E_KA
 ELB_B2E_JO
 REG-DCON
 x022rx
 x022sf
 x052rx
 x052sf
 x052rx
 x052sf
 x052sf
 Unresolved
 ELB_B3_CM
 key_East
 L7SCALE
 1=1



c:\work\ELB\B2E_KP04.dwg
 10/16/08 08:48 : eackerm OE5396

No.	Date	Dsn.	Chk.	App.	Revisions

Designed By:
 Drawn By:
 Checked By:
 Approved By:

FEIS
 CONCEPTUAL

CH2MHILL
 IN ASSOCIATION WITH
PARSONS & INCA
 ENGINEERS INC.

Submitted: Date:
 Approved: Date:

Scale:
 H: 1"=100'; V: 1"=25'
 Filename:
 ELB\B2E_KP04.dwg
 Contract No.:
 EL_SEG_B

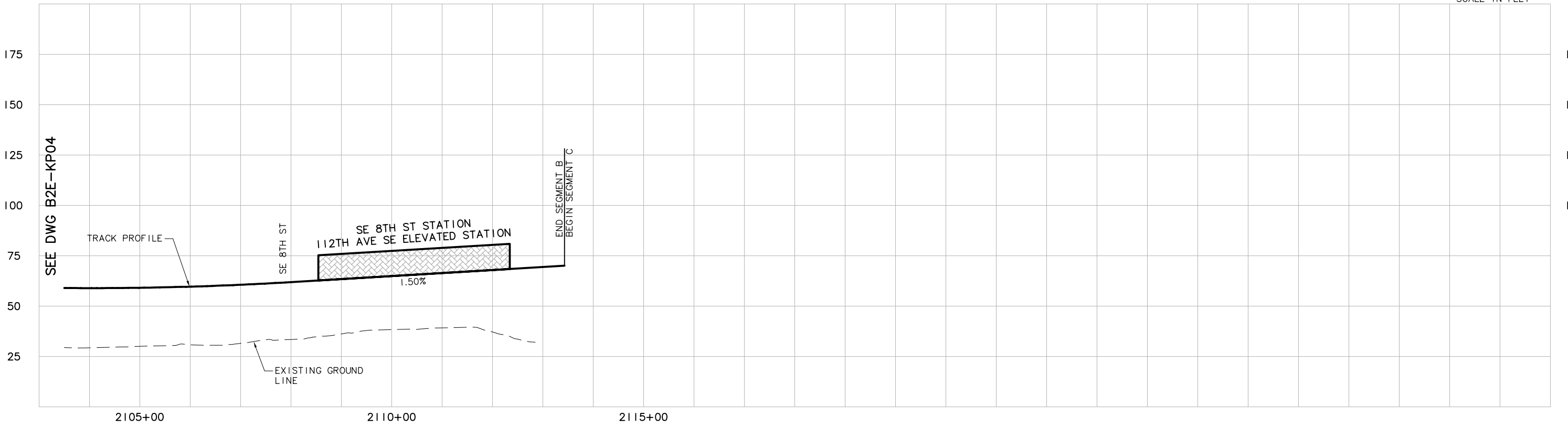
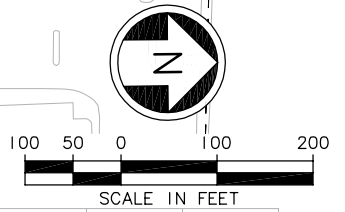
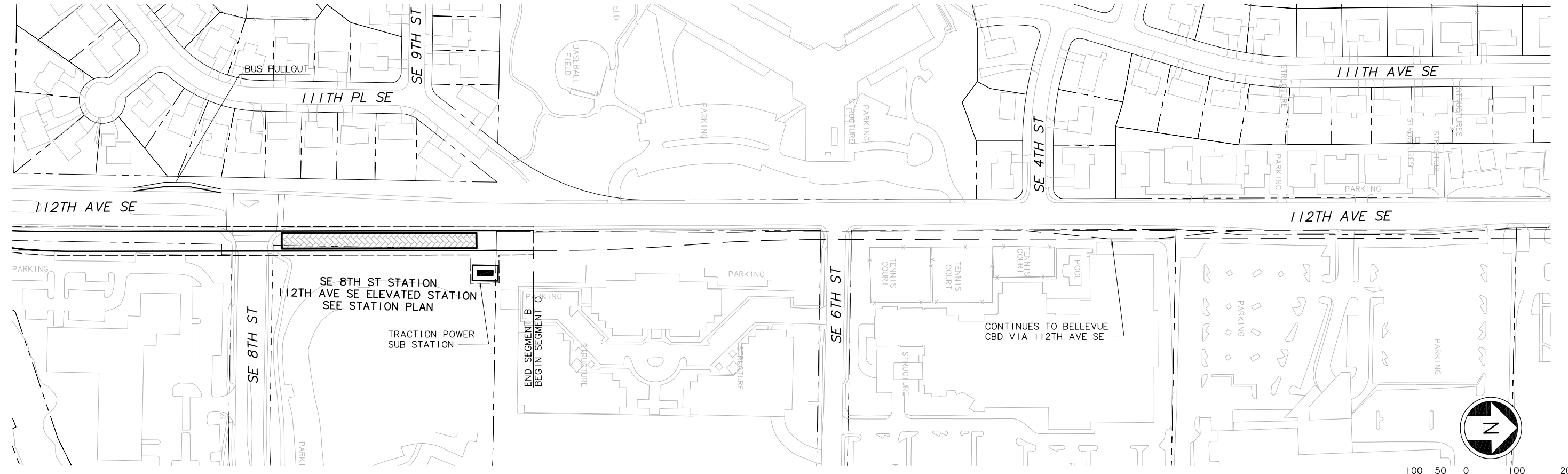
EAST LINK PROJECT
 SEGMENT B
 ALTERNATIVE B2E
 TRACK PLAN & PROFILE

Drawing No.:
B2E-KP04
 Sheet No.: Rev.:
B-54

XREF'S
 Resolved
 z9-2234h
 z9-910010
 ELB_B2E_CM
 ELB_B2E_KA
 ELB_B2E_J0
 ELC_C7E_KA
 REG-DCON
 x0522rx
 x0522sf
 x0525rx
 x0525sf
 Unresolved
 key_East

LTSCALE
 1=1

SEE DWG B2E-KP04



c:\work\ELB\B2E_KP05.dwg
 10/16/08 08:48 : eackerm OE5396

Designed By:					
Drawn By:					
Checked By:					
Approved By:					
No.	Date	Dsn.	Chk.	App.	Revisions

FEIS CONCEPTUAL

CH2MHILL
 IN ASSOCIATION WITH
PARSONS & INCA
 ENGINEERS INC.

Submitted: _____ Date: _____ Approved: _____ Date: _____

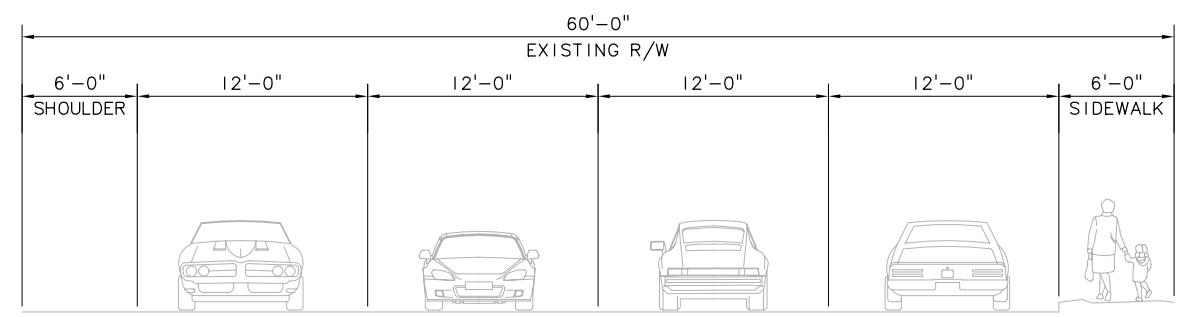
Scale: H: 1"=100'; V: 1"=25'
 Filename: ELB\B2E_KP05.dwg
 Contract No.: EL_SEG_B

EAST LINK PROJECT
 SEGMENT B
 ALTERNATIVE B2E
 TRACK PLAN & PROFILE

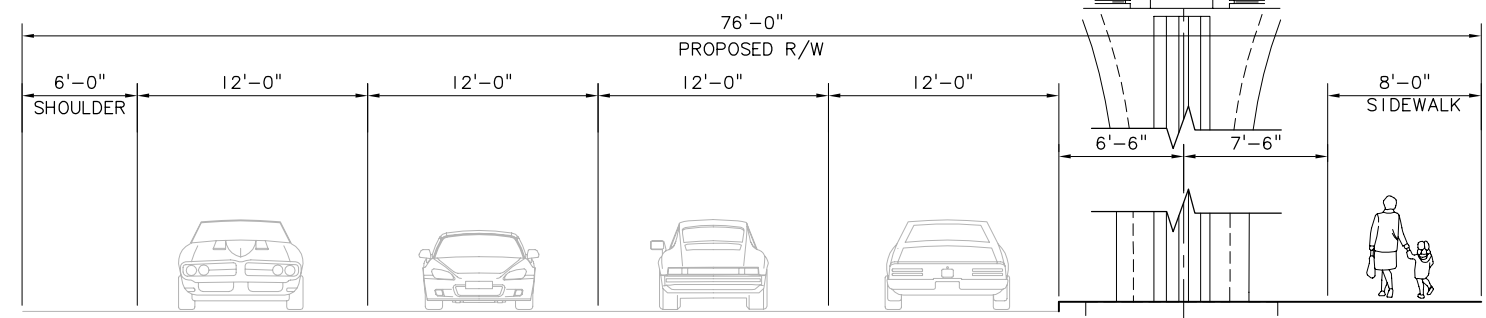
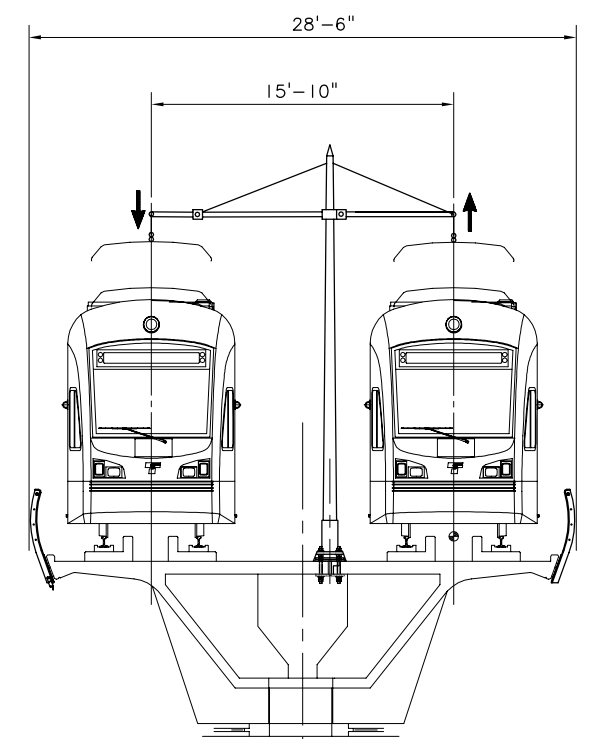
THIS PRINT RELEASED
 HALF SCALE

Drawing No.: B2E-KP05
 Sheet No.: _____ Rev.: _____
 B-55

XREF'S
 Resolved
 ZG-2234H
 REG-DCON
 Unresolved
 LTSCALE
 1=1



EXISTING ROADWAY SECTION - BELLEVUE WAY SE (NORTH OF S. BELLVUE P&R)
 SCALE: NTS



PROPOSED ROADWAY & LRT SECTION - BELLEVUE WAY SE
ALIGNMENT: B2E
ELEVATED DIRECT FIXATION DOUBLE TRACK GUIDEWAY
 SCALE: NTS

c:\work\ELBIB2E_KX01.dwg
 10/16/08 08:48 : eackerm OE5396

No.	Date	Dsn.	Chk.	App.	Revisions

Designed By:
 Drawn By:
 Checked By:
 Approved By:

**FEIS
 CONCEPTUAL**

CH2MHILL
 IN ASSOCIATION WITH
PARSONS & INCA
 ENGINEERS INC.

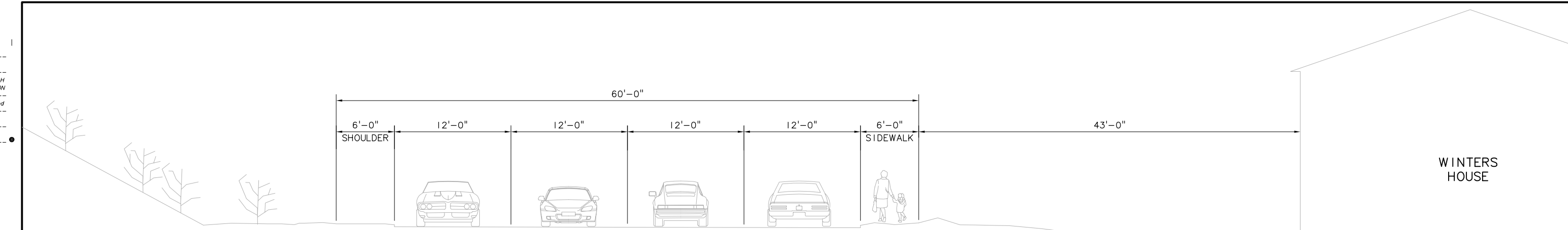
Submitted: Date: Approved: Date:

Scale: NTS
 Filename: ELBIB2E_KX01.dwg
 Contract No.: EL_SEG_B
 Date:

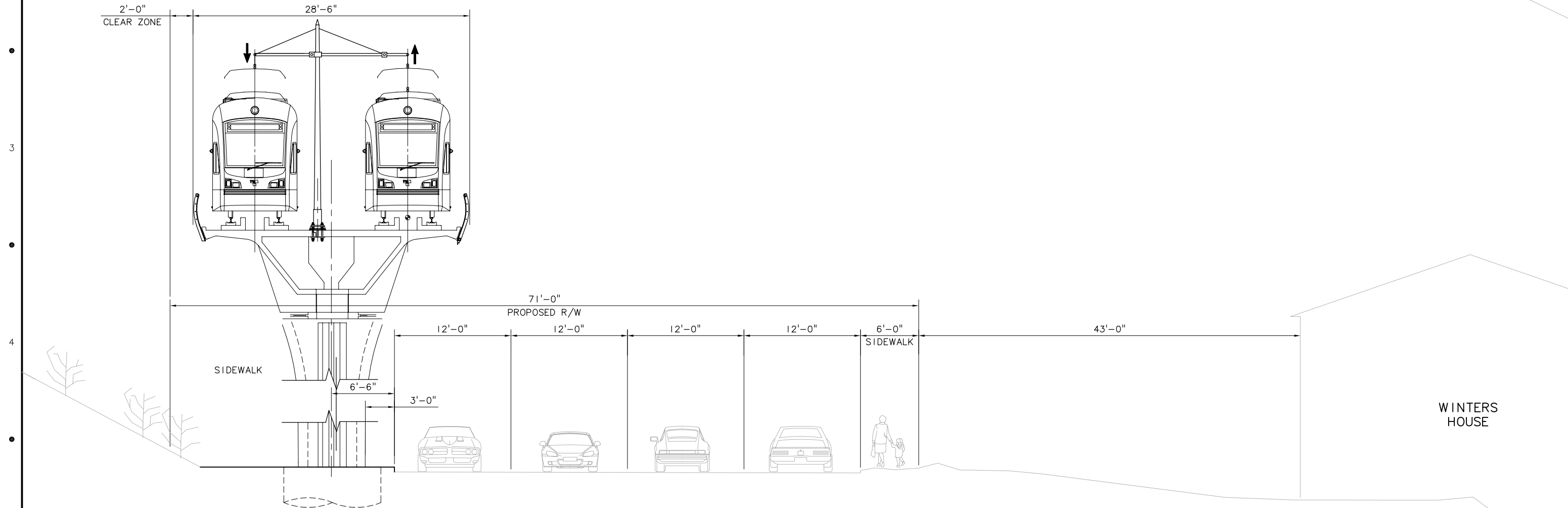
EAST LINK PROJECT
SEGMENT B
ALTERNATIVE B2E
TYPICAL SECTION

Drawing No.: **B2E-KX01**
 Sheet No.: Rev.:
B-56

XREF'S
 Resolved
 Z0-2234H
 REG-DCON
 Unresolved
 LTSCALE
 1=1



EXISTING ROADWAY SECTION – BELLEVUE WAY SE AT THE WINTERS HOUSE
 SCALE: NTS



PROPOSED ROADWAY & LRT SECTION – BELLEVUE WAY SE AT THE WINTERS HOUSE (WINDING TO WEST)
 ALIGNMENT: B2E
 ELEVATED DIRECT FIXATION DOUBLE TRACK GUIDEWAY
 SCALE: NTS

c:\work\ELB\B2E_KX02.dwg
 10/16/08 08:49 : eackerm OE5396

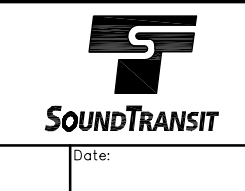
No.	Date	Dsn.	Chk.	App.	Revisions

Designed By:
 Drawn By:
 Checked By:
 Approved By:

**FEIS
 CONCEPTUAL**

CH2MHILL
 IN ASSOCIATION WITH
PARSONS & INCA
 ENGINEERS INC.

Submitted: Date: Approved: Date:

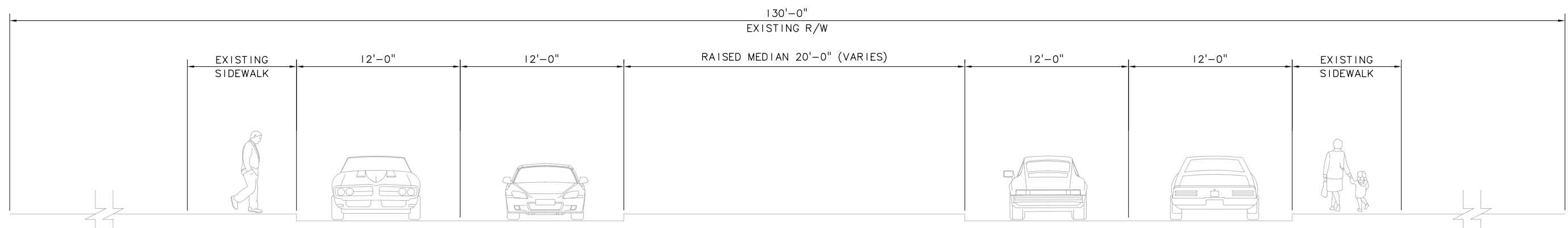


Scale: NTS
 Filename: ELB\B2E_KX02.dwg
 Contract No.: EL_SEG_B
 Date:

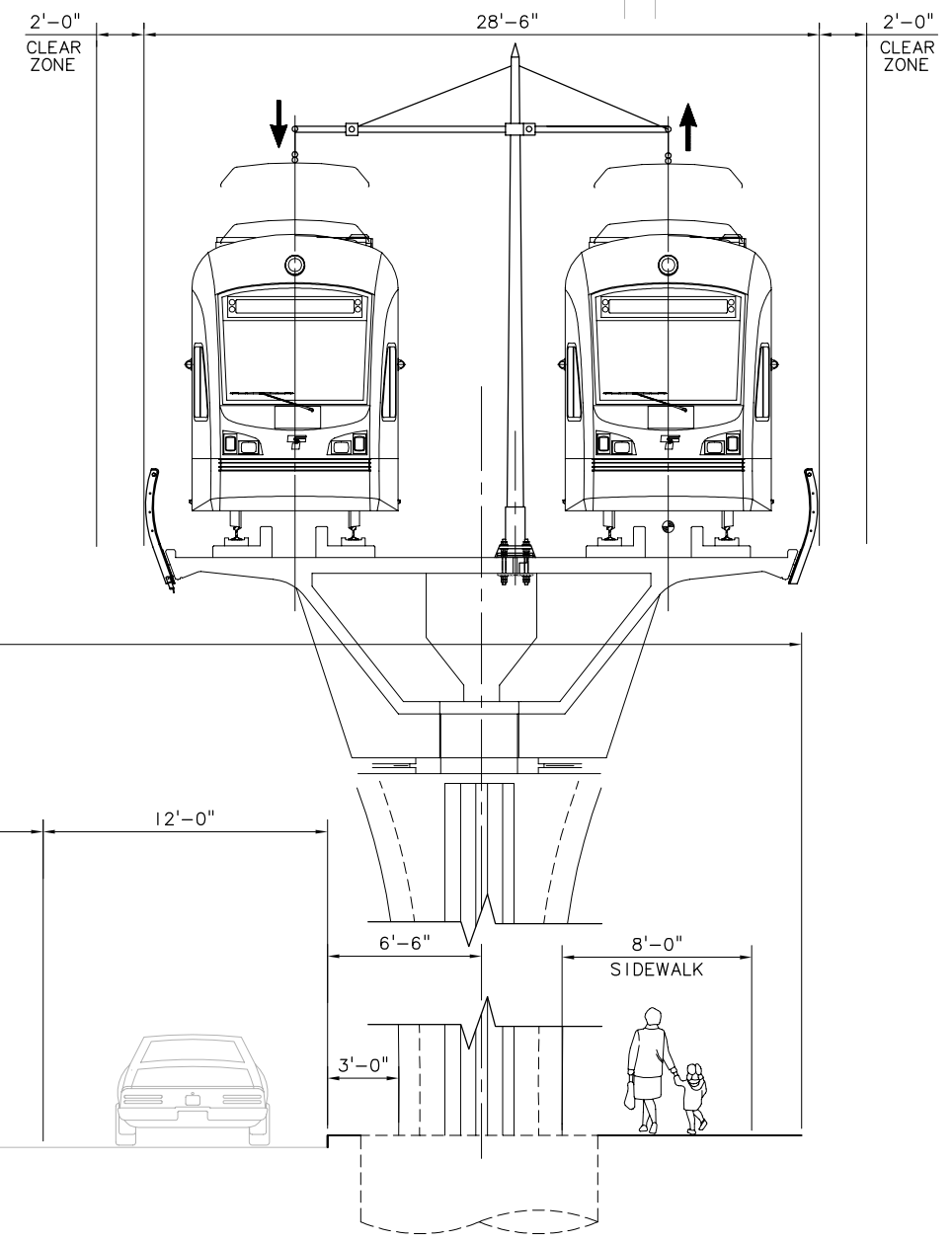
**EAST LINK PROJECT
 SEGMENT B
 ALTERNATIVE B2E
 TYPICAL SECTION**

Drawing No.: B2E-KX02
 Sheet No.: Rev.:
B-57

XREF'S
 Resolved
 ZG-2234H
 REG-DCON
 Unresolved
 LTSCALE
 1=1



EXISTING ROADWAY SECTION - 112TH AVE SE (SOUTH OF SE 8TH)
 SCALE: NTS



**PROPOSED ROADWAY LRTSECTION - 112TH AVE SE
 ALIGNMENT: B2E
 ELEVATED DIRECT FIXATION DOUBLE TRACK GUIDEWAY**
 SCALE: NTS

c:\work\ELBIB2E_KX03.dwg
 10/16/08 08:49 : eackerm OE5396

No.	Date	Dsn.	Chk.	App.	Revisions

Designed By:
 Drawn By:
 Checked By:
 Approved By:

**FEIS
 CONCEPTUAL**

CH2MHILL
 IN ASSOCIATION WITH
PARSONS & INCA
 ENGINEERS INC.

Submitted: Date:
 Approved: Date:

Scale: NTS
 Filename: ELBIB2E_KX03.dwg
 Contract No.: EL_SEG_B
 Date:

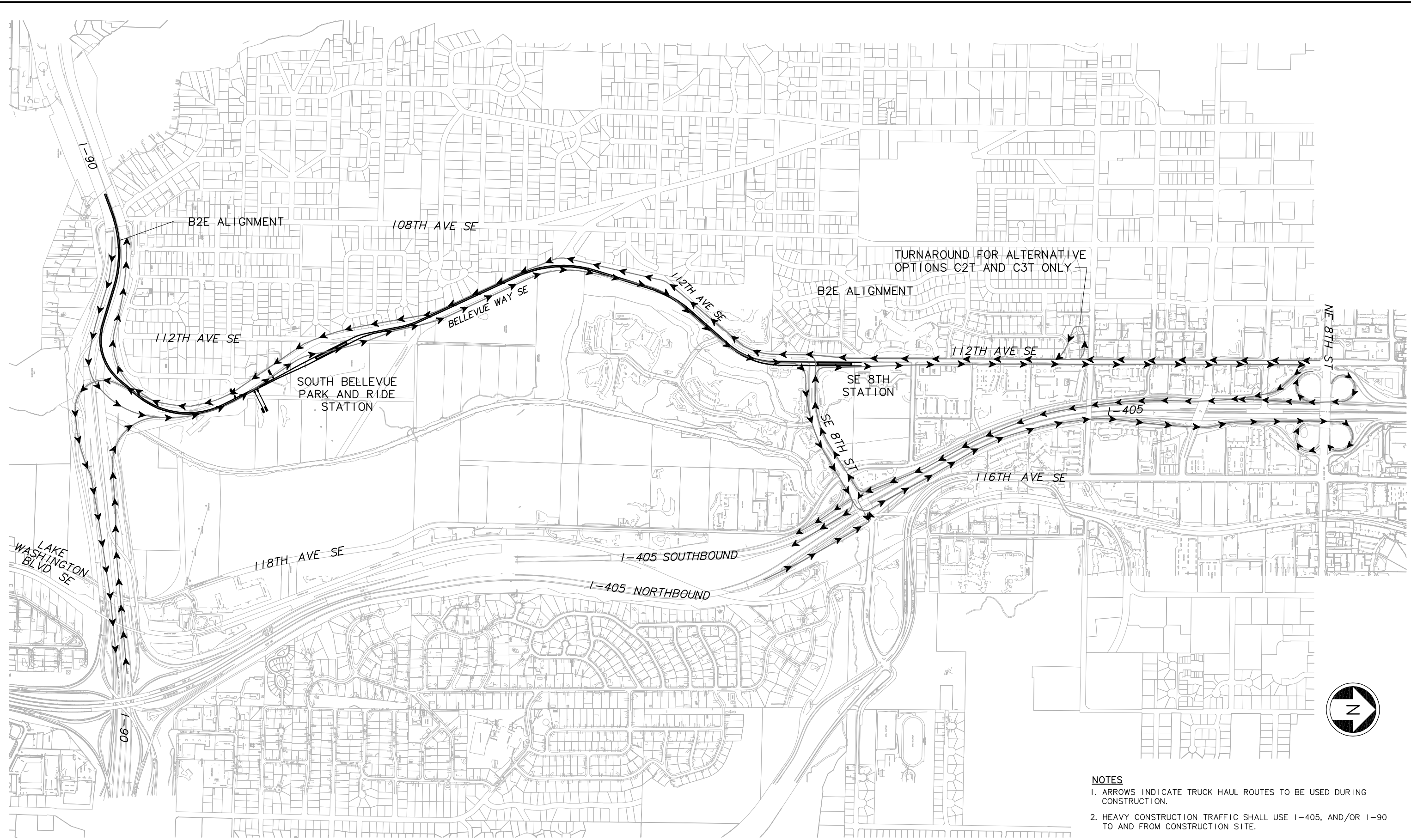
**EAST LINK PROJECT
 SEGMENT B
 ALTERNATIVE B2E
 TYPICAL SECTION**

Drawing No.: B2E-KX03
 Sheet No.: Rev.:
B-58

XREF'S
 Resolved
 ELB_B2E_KA
 REG-DCON
 Zg-2234h
 x0216rx
 x0216sf
 x0219rx
 x0222rx
 x0225rx
 x0228rx
 x0516rx
 x0516sf
 x0519rx
 x0519sf
 x0522rx
 x0522sf
 x0525rx
 x0525sf
 x0528rx
 x0528sf
 x0531rx
 x0531sf
 x0816rx
 x0816sf
 x0819rx
 x0819sf
 x0822rx
 x0822sf
 x0825rx
 x0825sf
 x0828rx
 x9616rx
 x9619rx
 x9916rx
 x9919rx

Unresolved
 LTSCALE
 1=1

c:\work\ELBIB2E_CC01.dwg
 10/16/08 08:46 : eackerm OE5396



- NOTES**
- ARROWS INDICATE TRUCK HAUL ROUTES TO BE USED DURING CONSTRUCTION.
 - HEAVY CONSTRUCTION TRAFFIC SHALL USE I-405, AND/OR I-90 TO AND FROM CONSTRUCTION SITE.

No.	Date	Dsn.	Chk.	App.	Revisions

Designed By:
 Drawn By:
 Checked By:
 Approved By:

**FEIS
 CONCEPTUAL**

Submitted: _____ Date: _____ Approved: _____ Date: _____

CH2MHILL

SOUNDTRANSIT

Scale: NTS
 Filename: ELBIB2E_CC01.dwg
 Contract No.: EL_SEG_B
 Date: _____

**EAST LINK PROJECT
 SEGMENT B
 ALTERNATIVE B2E**

CONSTRUCTION TRUCK HAUL ROUTE PLAN

Drawing No.: B2E-CC01
 Sheet No.: _____ Rev.: _____
B-59