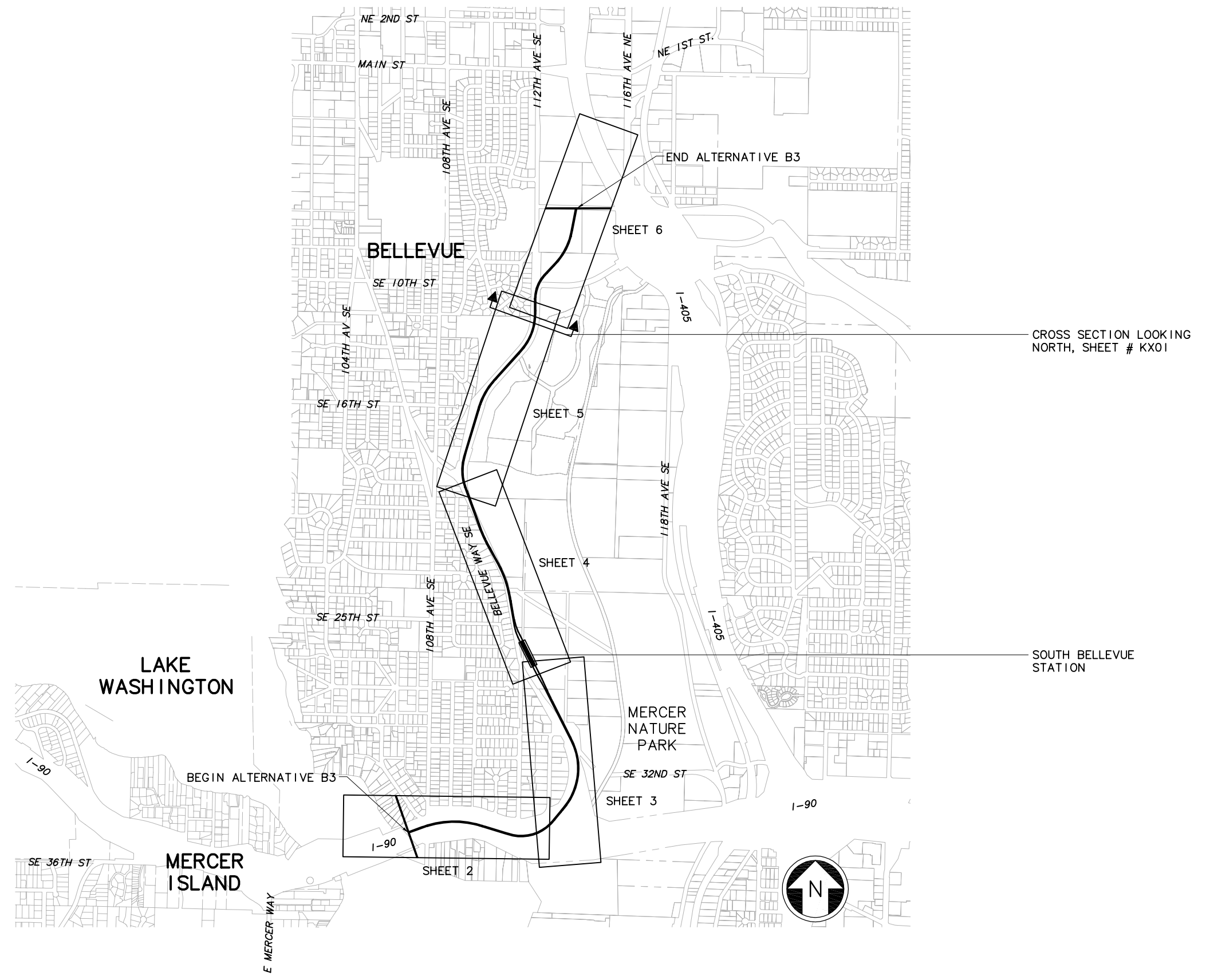


XREF'S
 Resolved
 ELB_B3_KA
 REG-DCON
 ZG-2234H
 x0216rx
 x0219rx
 x0222rx
 x0225rx
 x0228rx
 x0516rx
 x0519rx
 x0522rx
 x0525rx
 x0528rx
 x0816rx
 x0819rx
 x0822rx
 x0825rx
 x0828rx
 x9316rx
 x9319rx
 x9322rx
 x9616rx
 x9619rx
 x9916rx
 x9919rx
 Unresolved
 St_Names_E_20
 key_East
 LTSCALE
 1=1



c:\work\ELBIB3_GZ05.dwg
 10/16/08 08:50 : eackerm OE5396

No.	Date	Dsn.	Chk.	App.	Revisions

Designed By:
 Drawn By:
 Checked By:
 Approved By:

**FEIS
 CONCEPTUAL**

CH2MHILL
 IN ASSOCIATION WITH
PARSONS & INCA
 ENGINEERS INC.

Submitted: Date: Approved: Date:



Scale: NTS
 Filename: ELBIB3_GZ05.dwg
 Contract No.: EL_SEG_B
 Date:

**EAST LINK PROJECT
 SEGMENT B
 ALTERNATIVE B3**

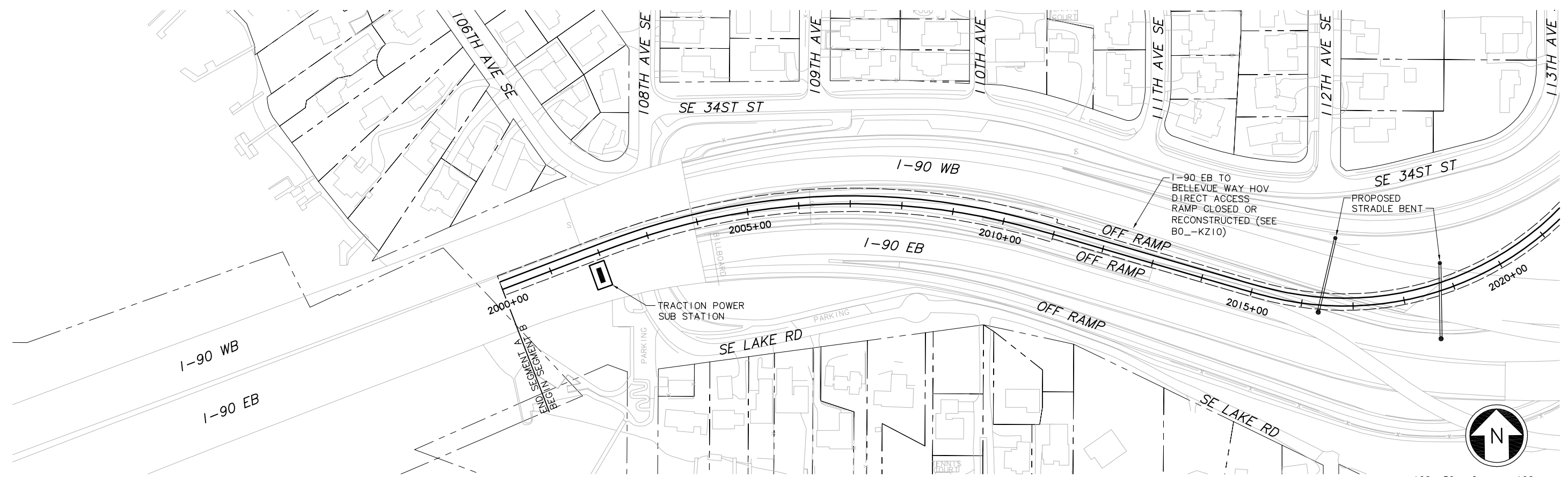
KEY PLAN

Drawing No.: B3_GZ05
 Sheet No.: Rev.:
 B-60

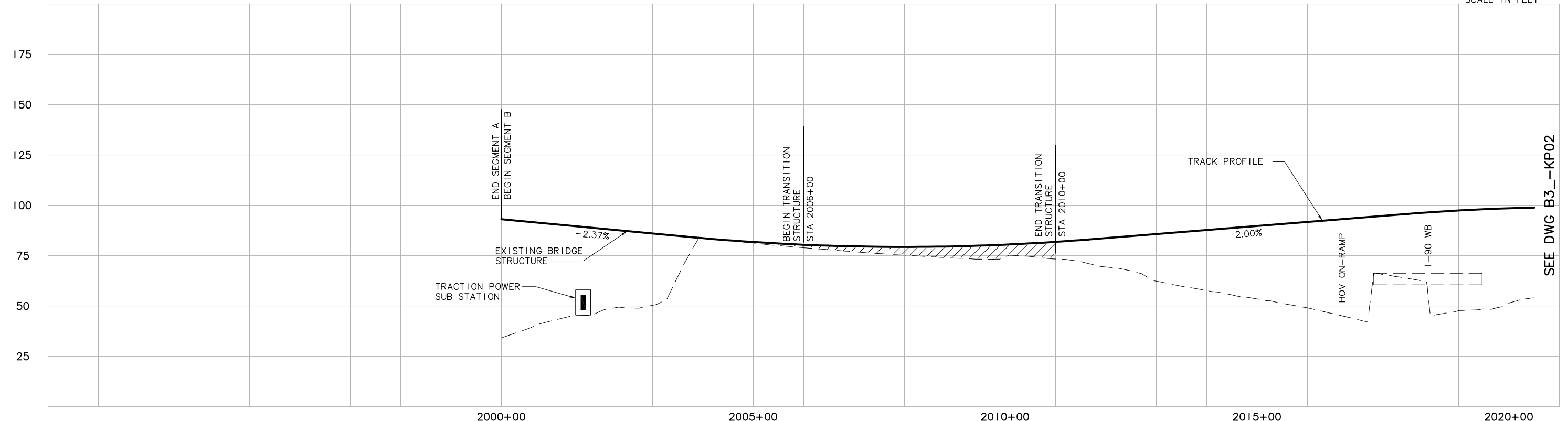
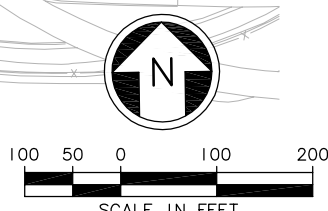
XREF'S
 Resolved
 z9-2234h
 z9-g10010
 ELB_B3_CM
 ELB_B3_JO
 ELB_B3_KA
 REG-DCON
 x0216rx
 x0516sf
 x0516rx
 x0516sf
 Unresolved
 key_East

LTSCALE
 1=1

1
 2
 3



SEE DWG B3_KP02



SEE DWG B3_KP02

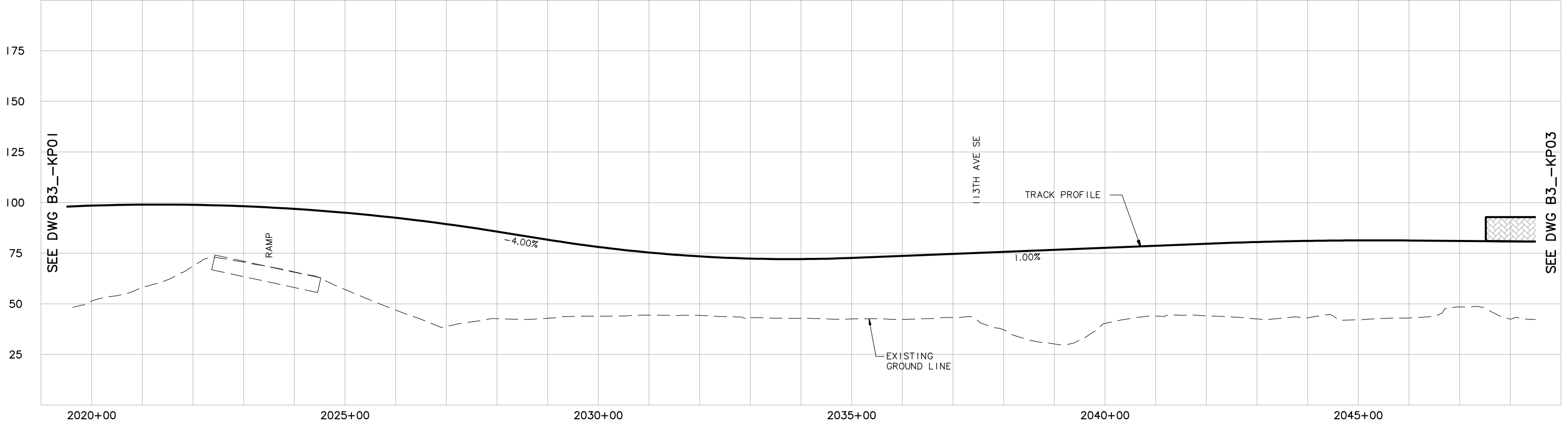
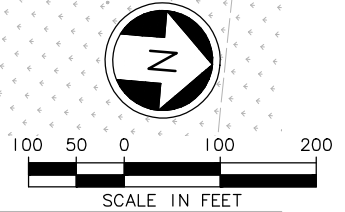
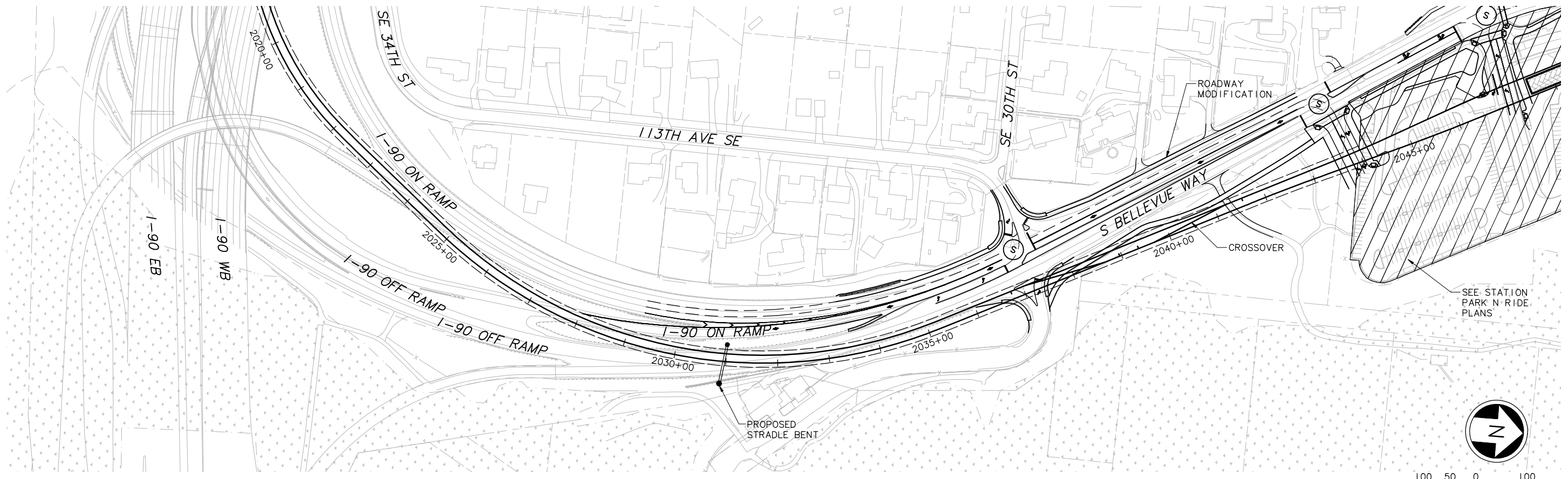
c:\work\ELBIB3_KP01.DWG
 11/10/08 13:25 : eackerm OE5396

					Designed By:		FEIS CONCEPTUAL	CH2MHILL <small>IN ASSOCIATION WITH</small> PARSONS & INCA <small>ENGINEERS INC.</small>				Scale: H: 1"=100'; V: 1"=25' Filename: ELBIB3_KP01.DWG Contract No.: EL_SEG_B		EAST LINK PROJECT SEGMENT B ALTERNATIVE B3 TRACK PLAN & PROFILE		Drawing No.: B3_KP01	
					Drawn By:			Submitted:		Date:		Date:				Sheet No.: B-61	
					Checked By:			Approved:		Date:		Date:				Rev.:	
					Approved By:												
No.	Date	Dsn.	Chk.	App.	Revisions												

DWG. INFO:
 L1SCALE:
 1=1
 XREFs:
 -Attach:
 z9-2234h
 z9-g10010
 -Overlay:
 ELB_B3_CM
 ELB_B3_KA
 x0516sr
 x0519sr
 x0519sr
 -Unresolved:

SEE DWG B3_-KP01

SEE DWG B3_-KP03



c:\work\feis\segment_b\b3\ELB\B3_KP02.dwg
 04/27/11 16:39 : khuum 065585

No.	Date	Dsn.	Chk.	App.	Revisions

Designed By:	
Drawn By:	
Checked By:	
Approved By:	

FEIS
 CONCEPTUAL

CH2MHILL
 IN ASSOCIATION WITH
PARSONS & INCA
 ENGINEERS INC.

Submitted:	Date:	Approved:	Date:

SOUNDTRANSIT

Scale:	H: 1"=100'; V: 1"=25'
Filename:	ELB\B3_KP02.dwg
Contract No.:	EL_SEG_B
Date:	



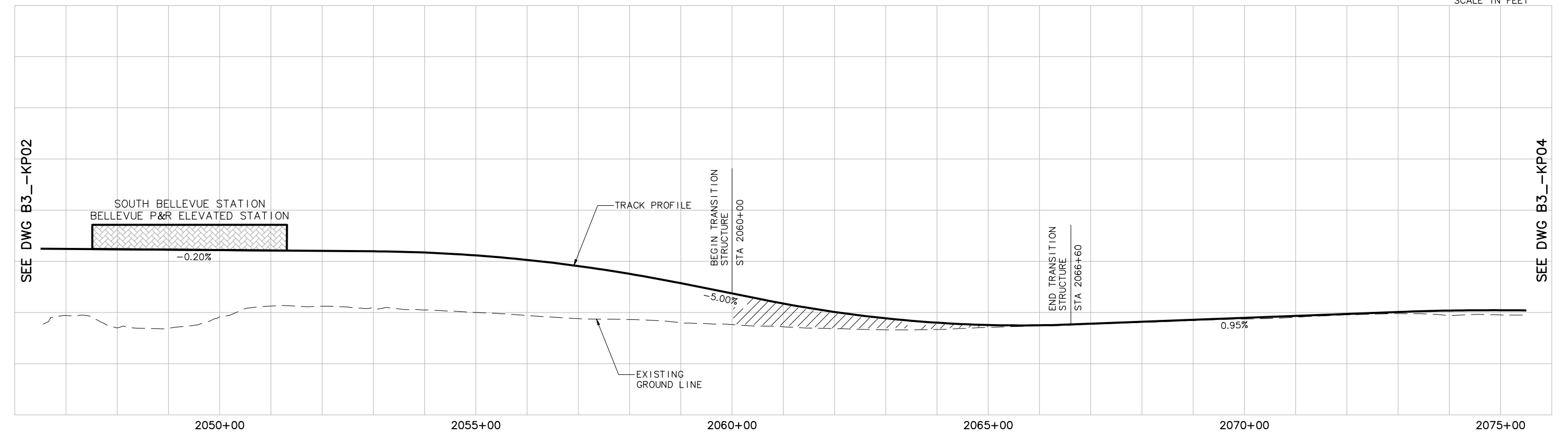
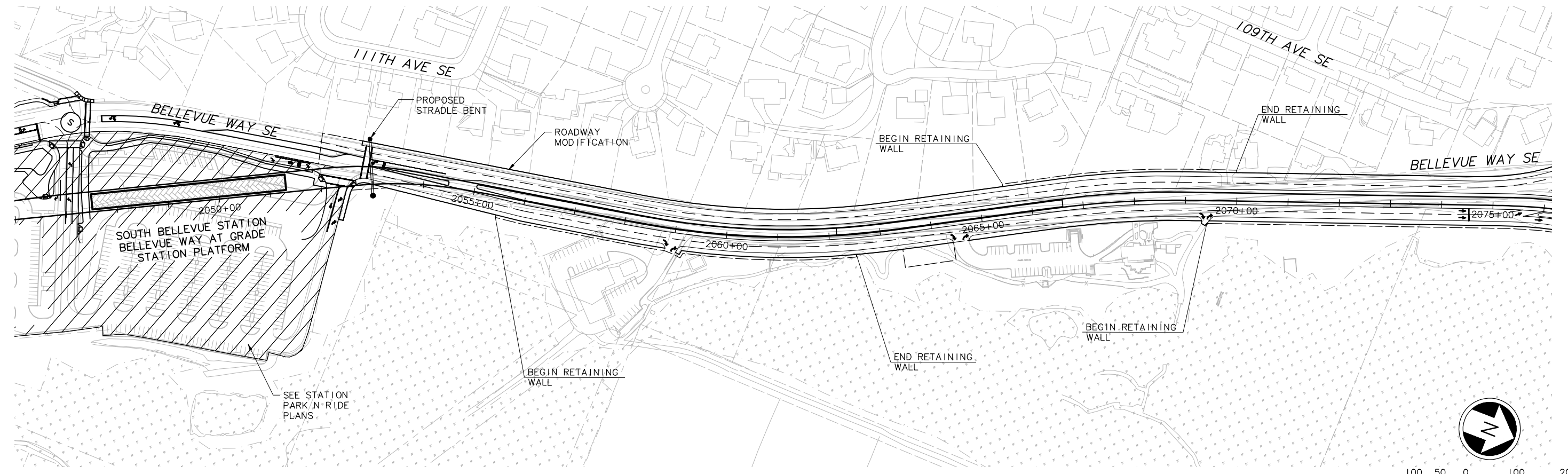
EAST LINK PROJECT
 SEGMENT B
 ALTERNATIVE B3
 TRACK PLAN & PROFILE

Drawing No.:	B3_-KP02
Sheet No.:	B-62
Rev.:	

DWG. INFO:
 LTSCALE:
 1=1
 XREFs:
 -Attach:
 z9-234h
 z9-g10010
 -Overlay:
 ELB_B3_CM
 ELB_B3_KA
 x0219rf
 x0222rf
 x0222rf
 x0519rf
 x0519rf
 x0522rf
 x0522rf
 -Unresolved:

SEE DWG B3_KP02

SEE DWG B3_KP04



c:\work\feis\segment_b\b3\ELBIB3_KP03.dwg
 04/27/11 16:41 : khuum 065585

No.	Date	Dsn.	Chk.	App.	Revisions

Designed By:
 Drawn By:
 Checked By:
 Approved By:

**FEIS
 CONCEPTUAL**

CH2MHILL
 IN ASSOCIATION WITH
PARSONS & INCA
 ENGINEERS INC.

Submitted: _____ Date: _____
 Approved: _____ Date: _____

SOUNDTRANSIT

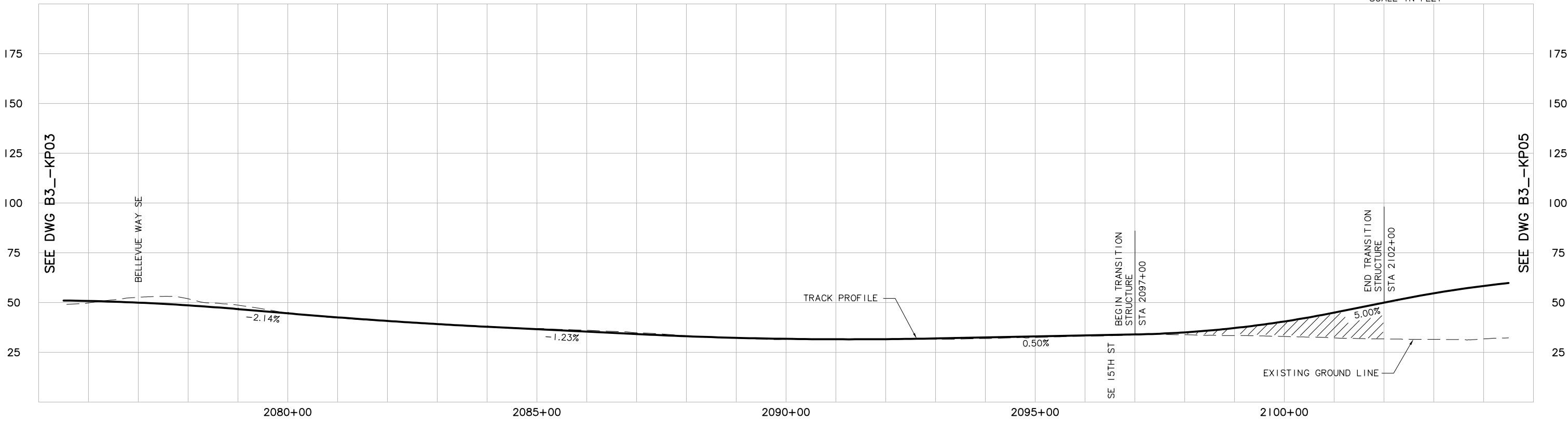
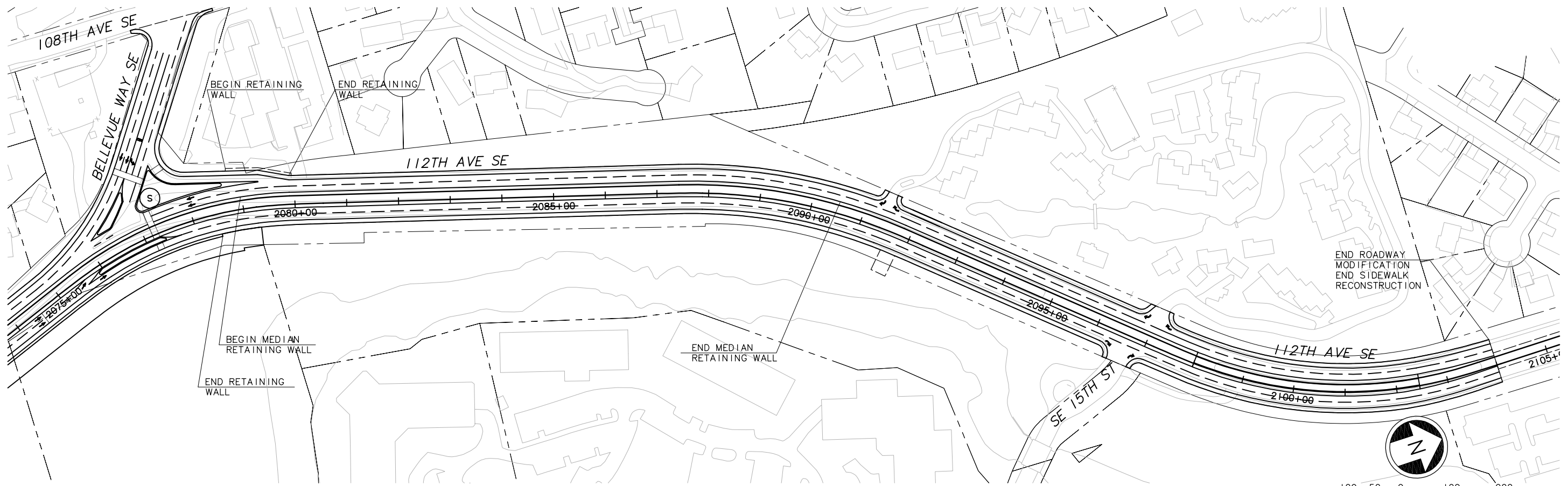
Scale:
 H: 1"=100'; V: 1"=25'
 Filename:
 ELBIB3_KP03.dwg
 Contract No.:
 EL_SEG_B



**EAST LINK PROJECT
 SEGMENT B
 ALTERNATIVE B3
 TRACK PLAN & PROFILE**

Drawing No.:
B3_KP03
 Sheet No.:
B-63
 Rev: _____

XREF'S
 Resolved
 z9-2234h
 z9-g10010
 ELB_B3_CM
 ELB_B3_KA
 REG-DCON
 x0222rx
 x0522sf
 x0522rx
 x0522sf
 x0525rx
 x0525sf
 Unresolved
 key_East
 LTSCALE
 1/1



c:\work\ELBIB3_KP04.dwg
 10/16/08 08:51 : eackerm OE5396

No.	Date	Dsn.	Chk.	App.	Revisions

**FEIS
 CONCEPTUAL**

Designed By:
 Drawn By:
 Checked By:
 Approved By:

CH2MHILL
 IN ASSOCIATION WITH
PARSONS & INCA
 ENGINEERS INC.

Submitted: Date: Approved: Date:

SOUNDTRANSIT

Date:

Scale:
 H: 1"=100'; V: 1"=25'
 Filename:
 ELBIB3_KP04.dwg
 Contract No.:
 EL_SEG_B

Date:

**EAST LINK PROJECT
 SEGMENT B
 ALTERNATIVE B3
 TRACK PLAN & PROFILE**

THIS PRINT RELEASED
 HALF SCALE

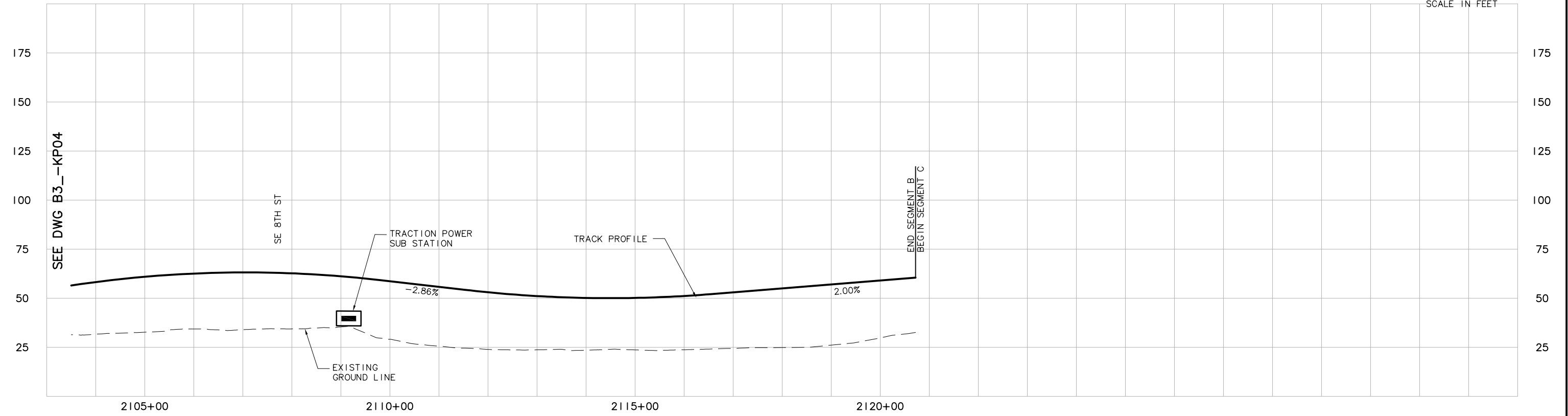
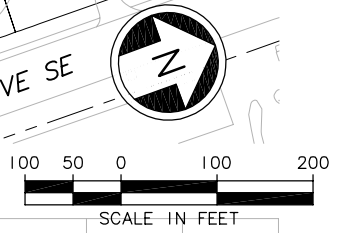
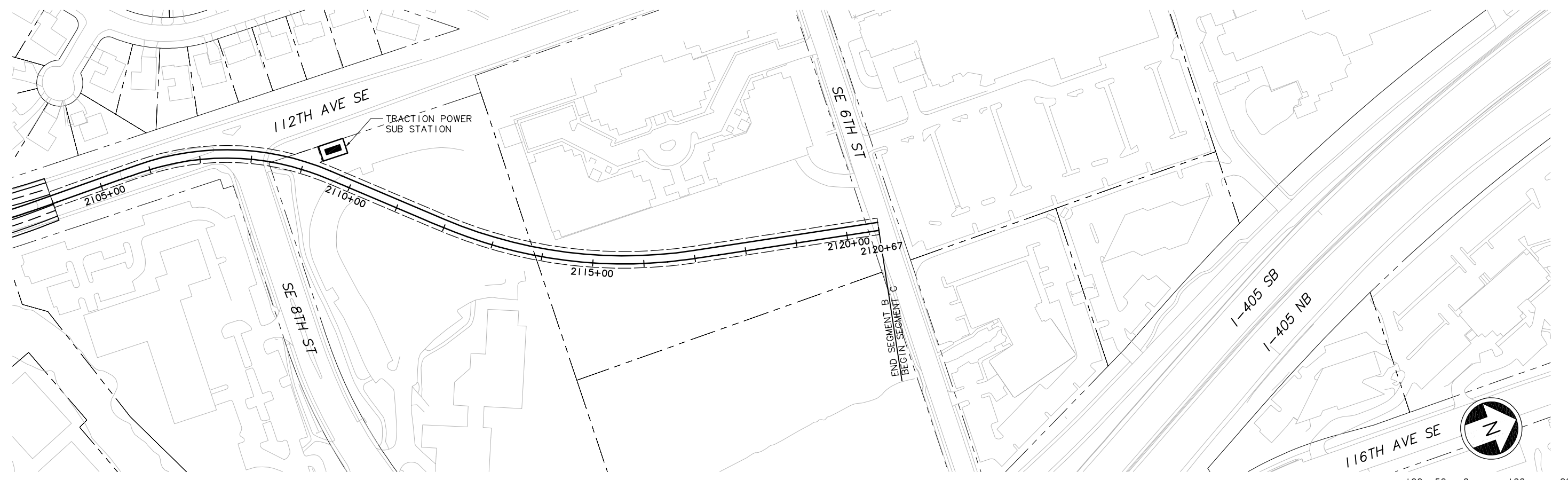
Drawing No.:
B3_KP04

Sheet No.:
B-64

Rev.:

XREF'S
 Resolved
 z9-2234h
 z9-g10010
 ELB_B3_CM
 ELB_B3_JO
 ELB_B3_KA
 REG-DCON
 x0522rx
 x0522sf
 x0525rx
 x0525sf
 Unresolved
 key_East
 LTSCALE
 1=1

SEE DWG B3_KP04



c:\work\ELBIB3_KP05.dwg
 10/16/08 08:51 : eackerm OE5396

No.	Date	Dsn.	Chk.	App.	Revisions

FEIS
 CONCEPTUAL

Designed By:
 Drawn By:
 Checked By:
 Approved By:

CH2MHILL
 IN ASSOCIATION WITH
PARSONS & INCA
 ENGINEERS INC.

Submitted: _____ Date: _____
 Approved: _____ Date: _____

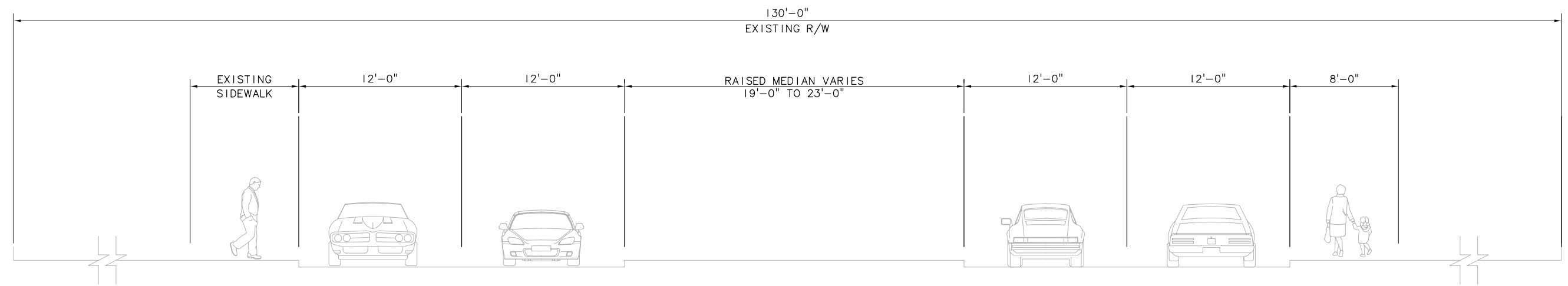
SOUNDTRANSIT

Scale:
 H: 1"=100'; V: 1"=25'
 Filename:
 ELBIB3_KP05.dwg
 Contract No.:
 EL_SEG_B

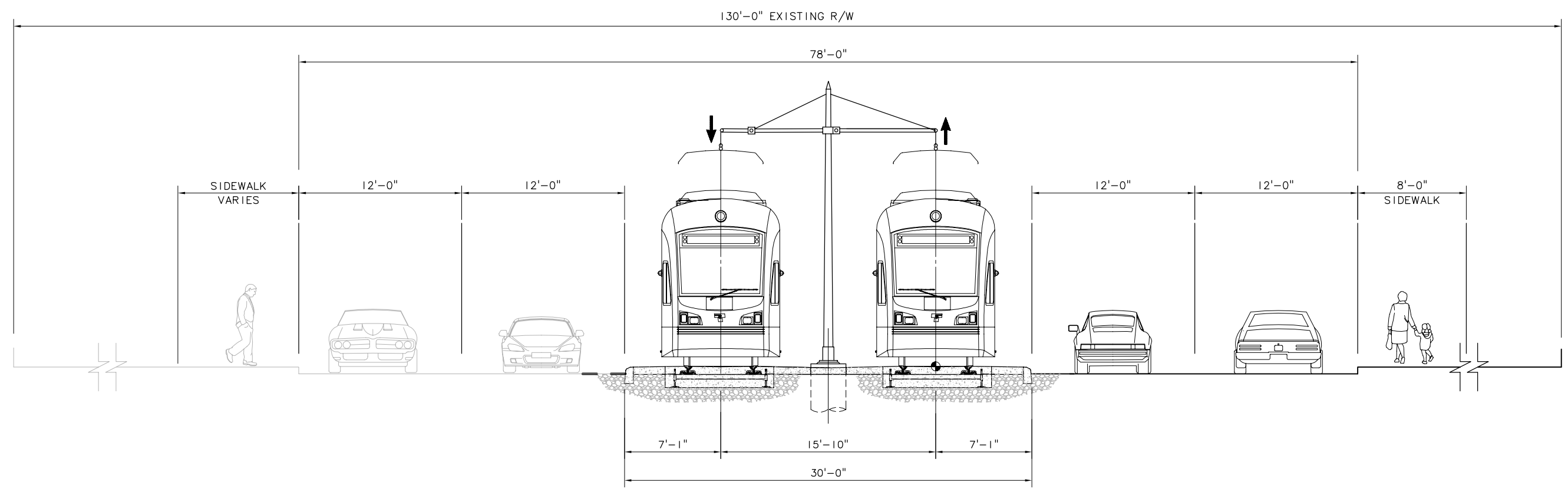
EAST LINK PROJECT
 SEGMENT B
 ALTERNATIVE B3
 TRACK PLAN & PROFILE

Drawing No.:
B3_KP05
 Sheet No.: _____ Rev.: _____
B-65

XREF'S
 Resolved
 ZG-2234H
 REG-DCON
 Unresolved
 LTSCALE
 1=1



EXISTING ROADWAY SECTION - 112TH AVE SE (SOUTH OF SE 8TH ST)
 SCALE: NTS



PROPOSED ROADWAY & LRT SECTION - 112TH AVE SE (WIDENING TO EAST)
 ALIGNMENT: B3
 AT-GRADE EMBEDDED DOUBLE TRACK GUIDEWAY
 SCALE: NTS

c:\work\ELBIB3_KX01.dwg
 10/16/08 08:51 : eackerm OE5396

No.	Date	Dsn.	Chk.	App.	Revisions

Designed By:
 Drawn By:
 Checked By:
 Approved By:

**FEIS
 CONCEPTUAL**

CH2MHILL
 IN ASSOCIATION WITH
PARSONS & INCA
 ENGINEERS INC.

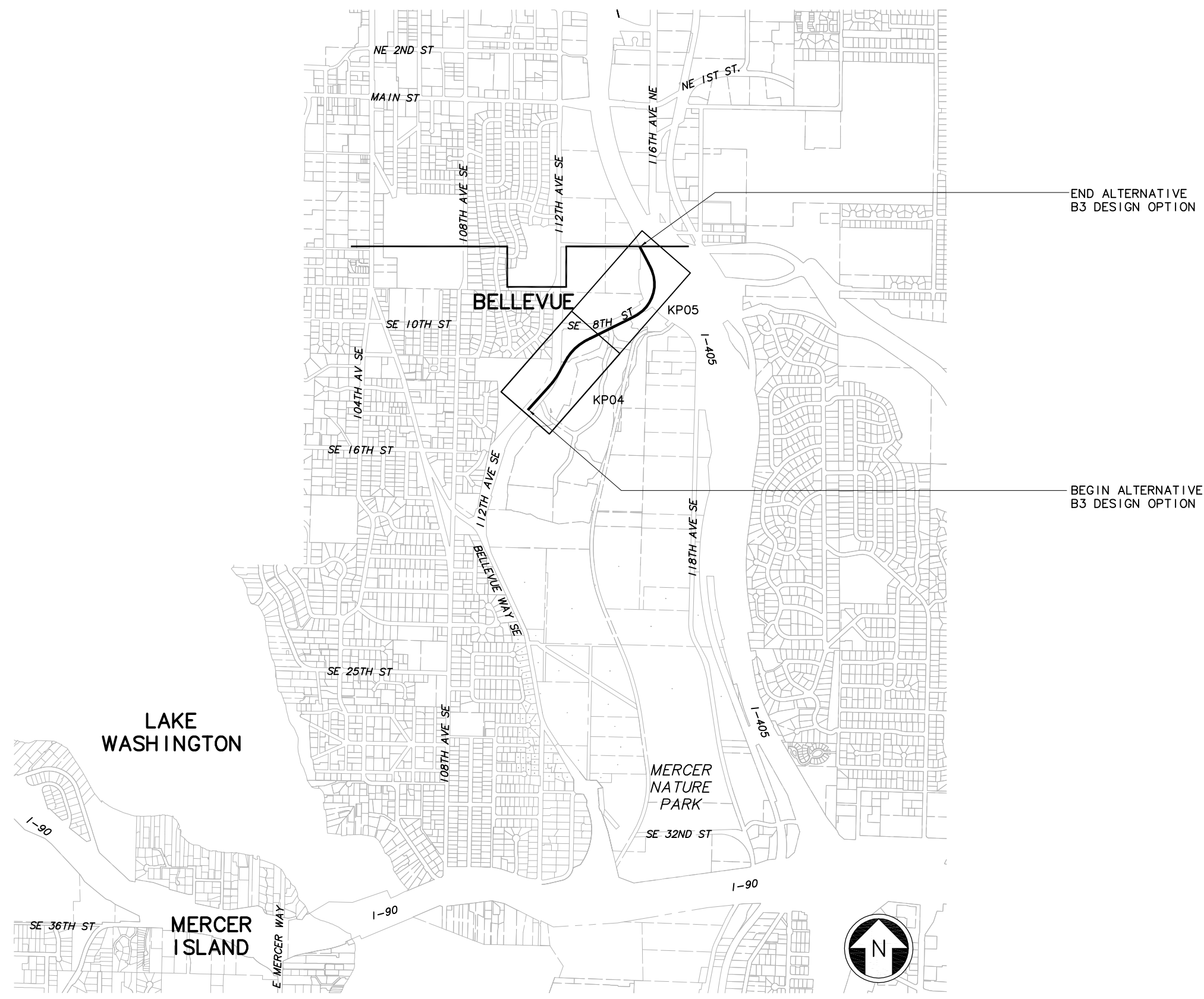
Submitted: Date: Approved: Date:

Scale: NTS
 Filename: ELBIB3_KX01.dwg
 Contract No.: EL_SEG_B
 Date:

**EAST LINK PROJECT
 SEGMENT B
 ALTERNATIVE B3
 TYPICAL SECTION**

Drawing No.: **B3_KX01**
 Sheet No.: Rev.:
B-66

DWG INFO:
 LSCALE:
 1=1
 XREFs:
 -Attach:
 -Overlay:
 ELB_B300_KA-100
 SUB-SDE 15
 ZC-2234H
 x0216rx
 x0219rx
 x0222rx
 x0225rx
 x0228rx
 x0516rx
 x0519rx
 x0522rx
 x0525rx
 x0528rx
 x0816rx
 x0819rx
 x0822rx
 x0825rx
 x0828rx
 x9316rx
 x9319rx
 x9322rx
 x9616rx
 x9619rx
 x9916rx
 x9919rx
 -Unresolved:
 key_Segment



c:\work\sdeis\ELB_2B3_GZ05.dwg
 10/08/10 09:37 : bolimaf OE6579

No.	Date	Dsn.	Chk.	App.	Revisions

Designed By:
 Drawn By:
 Checked By:
 Approved By:

FEIS CONCEPTUAL

CH2MHILL

Submitted: _____ Date: _____ Approved: _____

INCA ENGINEERS INC.

BOLIMA DRAFTING & DESIGN INC.

Date: _____ Approved: _____

SOUNDTRANSIT

Date: _____

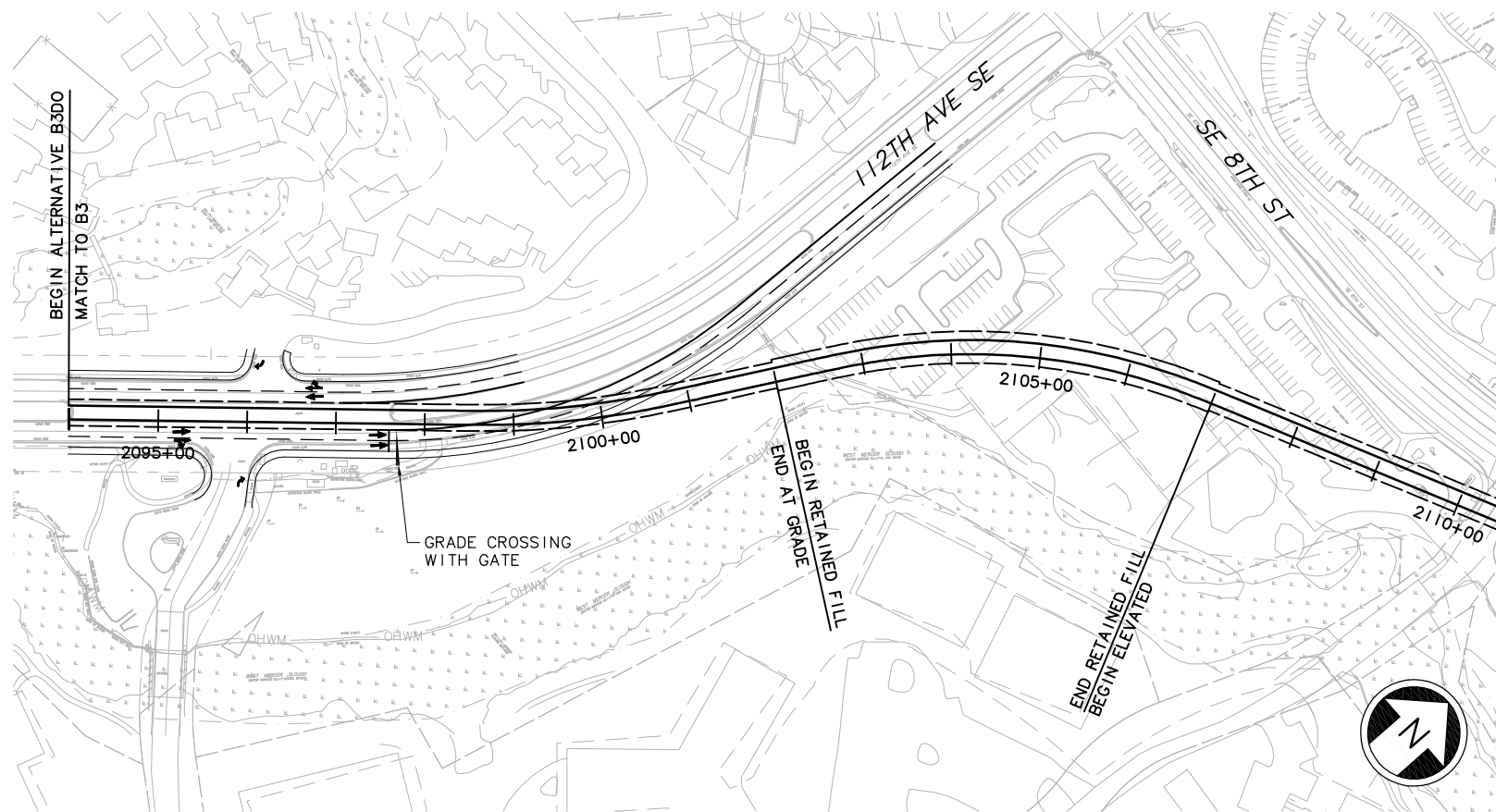
Scale: NTS
 Filename: ELB_2B3_GZ05.dwg
 Contract No.:
 Date: 07/30/10

LINK LIGHT RAIL PROJECT
EAST CORRIDOR
 SEGMENT B - ALT B3
 114TH EXTENSION DESIGN OPTION
 KEY PLAN

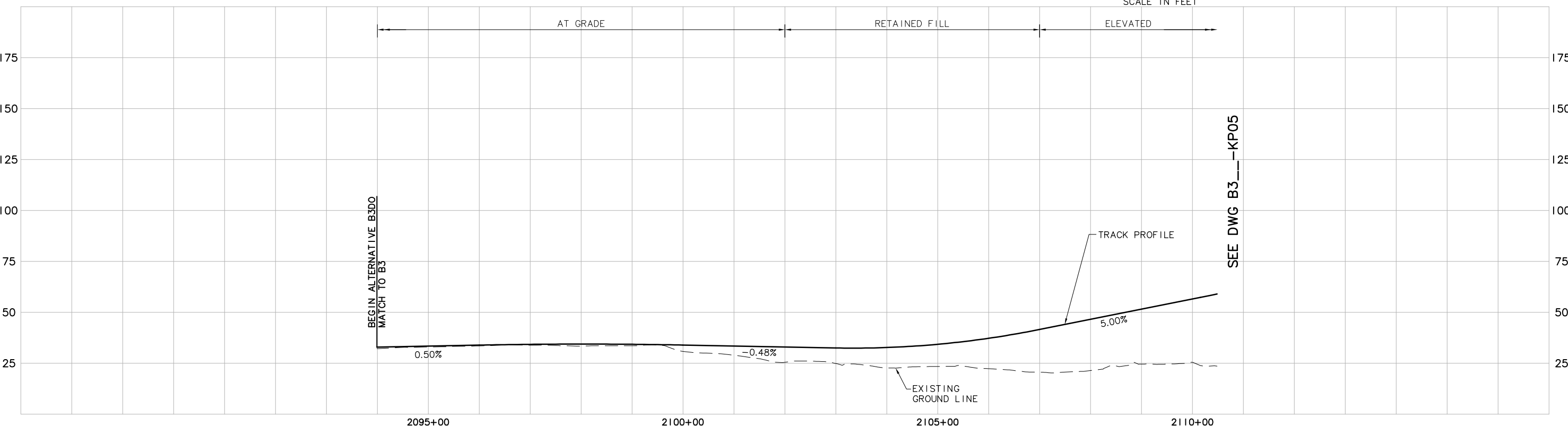
THIS PRINT REPRESENTS HALF SCALE

Drawing No.: B3__-GZ05
 Sheet No.: _____ Rev.: _____
B-67

DWG INFO:
 LTSCALE:
 1=1
 XREFs:
 -Attach:
 zg-2234h
 zg-g10010
 -Dwgfile:
 ELB_B3D0_KA-100
 SUB-SDE15
 x0219rx
 x0219ef
 x0222rx
 x0222ef
 x0223rx
 x0223ef
 x0225rx
 x0225ef
 x0519rx
 x0519ef
 x0522rx
 x0522ef
 x0523rx
 x0523ef
 -Unresolved: 2
 key_East



SEE DWG B3__-KP05



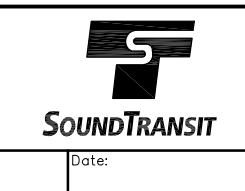
SEE DWG B3__-KP05

c:\work\sde15\ELB_2B3__KP04.dwg
 10/13/10 1:30 : bolimaf OE6579

No.	Date	Dsn.	Chk.	App.	Revisions

Designed By:	
Drawn By:	
Checked By:	
Approved By:	

FEIS
 CONCEPTUAL



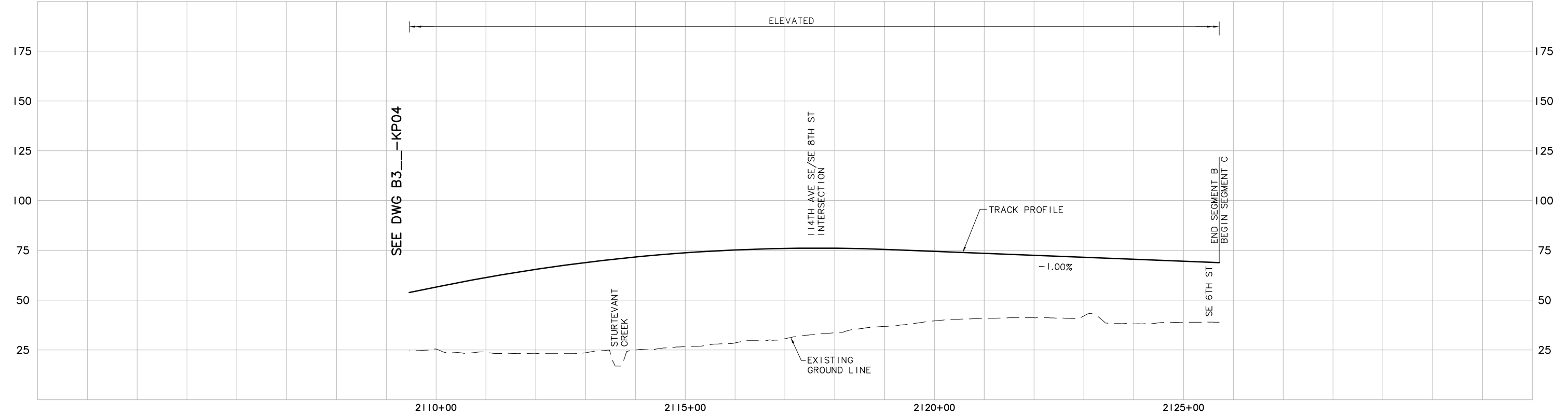
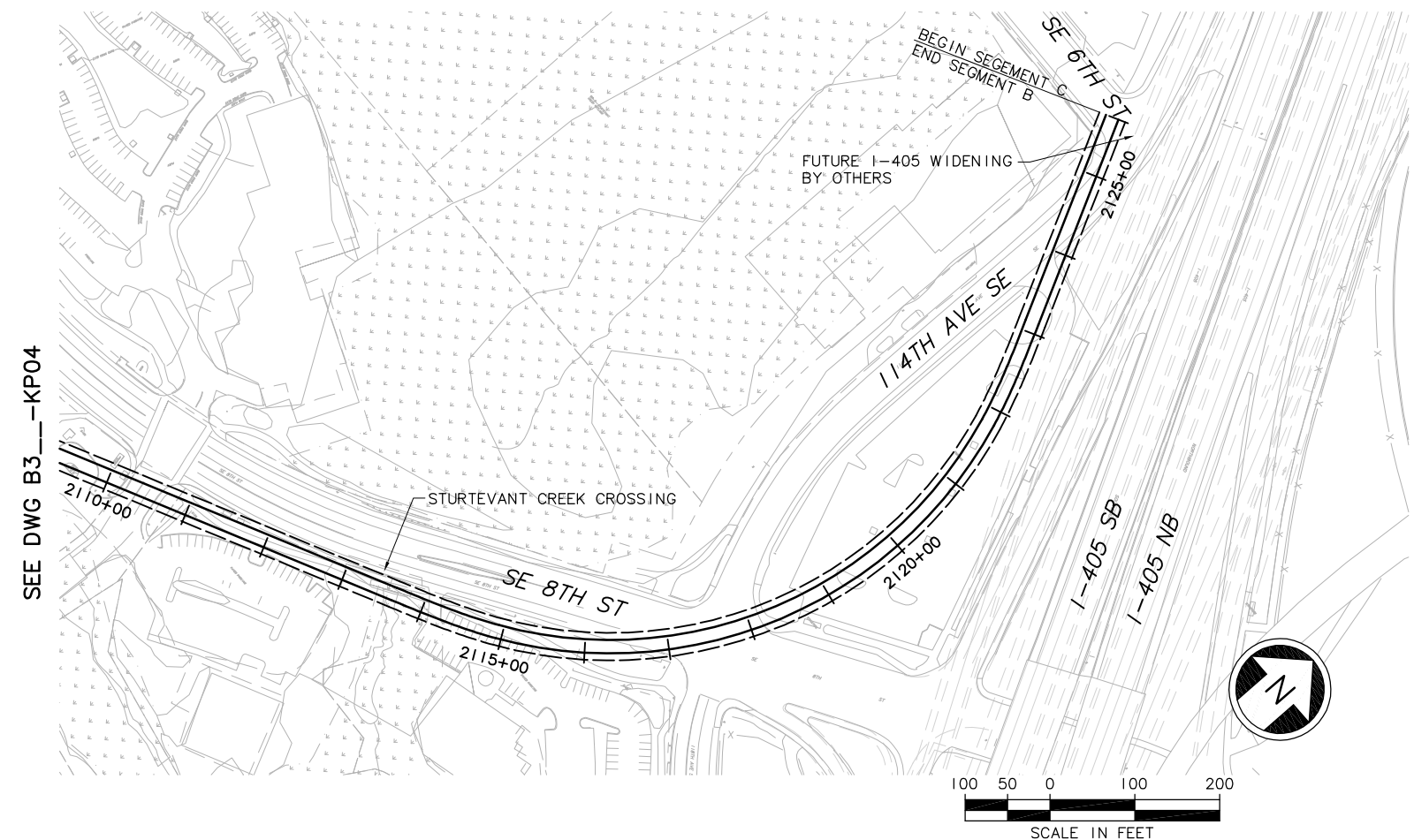
Scale:
 H: 1"=100'; V: 1"=25'
 Filename:
 ELB_2B3__KP04.dwg
 Contract No.:
 Date:
 07/30/10



LINK LIGHT RAIL PROJECT
 EAST CORRIDOR
 SEGMENT B - ALT B3
 TRACK PLAN & PROFILE

Drawing No.:		B3__-KP04
Sheet No.:	Rev.:	B-68

DWG INFO:
 LTSCALE:
 1=1
 XREFs:
 -Attach:
 zg-2234h
 zg-g 10010
 -Dwgfile:
 ELB_B3DO_KA_100
 x0219rx
 x0219ef
 x0222rx
 x0222ef
 x0225rx
 x0225ef
 x0519rx
 x0519ef
 x0522rx
 x0522ef
 x0525rx
 x0525ef
 x1405_chan
 -Unresolved: 2
 key_East



c:\work\feis\ELB_2B3_KP05.dwg
 02/22/11 15:39 : bolimaf OE6579

No.	Date	Dsn.	Chk.	App.	Revisions

Designed By:
 Drawn By:
 Checked By:
 Approved By:

FEIS CONCEPTUAL

CH2MHILL

Submitted: _____ Date: _____ Approved: _____

INCA ENGINEERS INC.

BOLIMA DRAFTING & DESIGN INC.

Date: _____ Approved: _____

SOUNDTRANSIT

Date: _____

Scale:
 H: 1"=100'; V: 1"=25'
 Filename:
 ELB_2B3_KP05.dwg
 Contract No.:
 Date: 02/22/11

LINK LIGHT RAIL PROJECT
EAST CORRIDOR
SEGMENT B - ALT B3
TRACK PLAN & PROFILE

Scale:

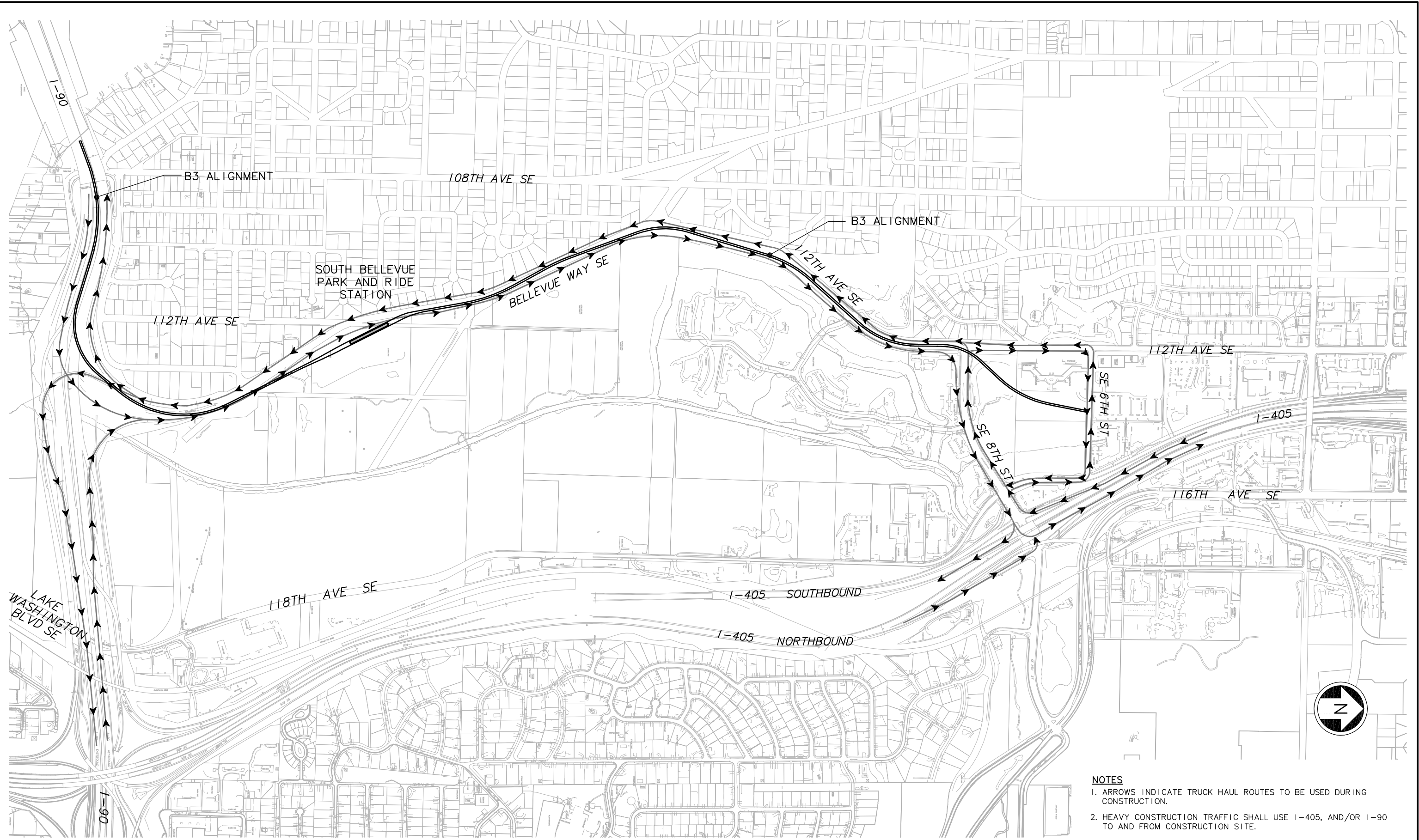
Drawing No.: **B3_KP05**
 Sheet No.: **B-69**
 Rev.: _____

XREF'S
 Resolved
 ELB_B3_KA
 REG-DCON
 Zg-2234h
 x0216rx
 x0216sf
 x0219rx
 x0222rx
 x0225rx
 x0228rx
 x0516rx
 x0516sf
 x0519rx
 x0519sf
 x0522rx
 x0522sf
 x0525rx
 x0525sf
 x0528rx
 x0528sf
 x0531rx
 x0531sf
 x0816rx
 x0816sf
 x0819rx
 x0819sf
 x0822rx
 x0822sf
 x0825rx
 x0825sf
 x0828rx
 x9616rx
 x9619rx
 x9916rx
 x9919rx

Unresolved

LTSCALE
 1=1

c:\work\ELBIB3_CC01.dwg
 10/16/08 08:49 : eackerm OE5396



- NOTES**
- ARROWS INDICATE TRUCK HAUL ROUTES TO BE USED DURING CONSTRUCTION.
 - HEAVY CONSTRUCTION TRAFFIC SHALL USE I-405, AND/OR I-90 TO AND FROM CONSTRUCTION SITE.

No.	Date	Dsn.	Chk.	App.	Revisions

Designed By:
 Drawn By:
 Checked By:
 Approved By:

**FEIS
 CONCEPTUAL**

Submitted: _____ Date: _____ Approved: _____ Date: _____

CH2MHILL

SOUNDTRANSIT

Scale: NTS
 Filename: ELBIB3_CC01.dwg
 Contract No.: EL_SEG_B
 Date: _____

**EAST LINK PROJECT
 SEGMENT B
 ALTERNATIVE B3**

CONSTRUCTION TRUCK HAUL ROUTE PLAN

Drawing No.: B3-CC01
 Sheet No.: _____ Rev.: _____
B-70